

Data Path : Z:\VOASRV\HPCHEM1\MSVOA U\DATA\VU083019\  
 Data File : VU034080.D  
 Acq On : 29 Aug 2019 22:15  
 Operator : JC/SP  
 Sample : K4609-02  
 Misc : 5.0mL/MSVOA U/WATER  
 ALS Vial : 30 Sample Multiplier: 1

Instrument :  
 MSVOA\_U  
 ClientSampleId :  
 CARBON-DRUM

Integration Parameters: RTEINT.P  
 Integrator: RTE  
 Smoothing : ON Filtering: 5  
 Sampling : 1 Min Area: 3 % of largest Peak  
 Start Thrs: 0.2 Max Peaks: 100  
 Stop Thrs : 0 Peak Location: TOP

If leading or trailing edge < 100 prefer < Baseline drop else tangent >  
 Peak separation: 5

Method : Z:\VOASRV\HPCHEM1\MSVOA\_U\METHOD\82U082919W.M  
 Title : SW846 8260

Signal : TIC

| peak # | R.T. min | first scan | max scan | last scan | PK TY | peak height | corr. area | corr. % max. | % of total |
|--------|----------|------------|----------|-----------|-------|-------------|------------|--------------|------------|
| 1      | 1.289    | 53         | 62       | 94        | rVB2  | 422043      | 900208     | 1.47%        | 1.130%     |
| 2      | 1.614    | 154        | 163      | 200       | rBV   | 1046942     | 1788339    | 2.92%        | 2.244%     |
| 3      | 2.318    | 368        | 382      | 414       | rBV   | 442654      | 1224039    | 2.00%        | 1.536%     |
| 4      | 2.617    | 447        | 475      | 506       | rBV3  | 10171319    | 61153350   | 100.00%      | 76.735%    |
| 5      | 4.788    | 1136       | 1150     | 1168      | rBV   | 593844      | 2004283    | 3.28%        | 2.515%     |
| 6      | 4.945    | 1188       | 1199     | 1264      | rVB   | 545350      | 1807724    | 2.96%        | 2.268%     |
| 7      | 5.286    | 1289       | 1305     | 1330      | rBV2  | 230553      | 736261     | 1.20%        | 0.924%     |
| 8      | 5.858    | 1467       | 1483     | 1507      | rBV   | 641993      | 1662912    | 2.72%        | 2.087%     |
| 9      | 7.543    | 1992       | 2007     | 2055      | rBV   | 1105927     | 2478671    | 4.05%        | 3.110%     |
| 10     | 9.074    | 2469       | 2483     | 2521      | rBV   | 867644      | 2154185    | 3.52%        | 2.703%     |
| 11     | 10.299   | 2851       | 2864     | 2892      | rBV   | 850978      | 1634252    | 2.67%        | 2.051%     |
| 12     | 11.472   | 3215       | 3229     | 3253      | rBV   | 1301918     | 2150409    | 3.52%        | 2.698%     |

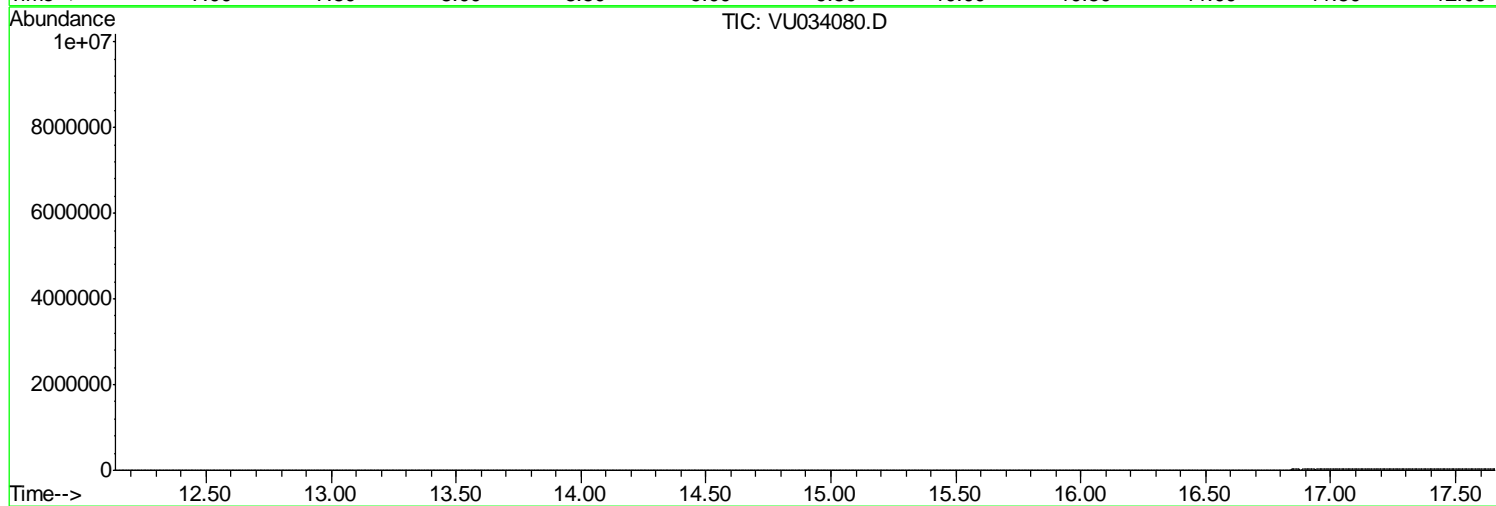
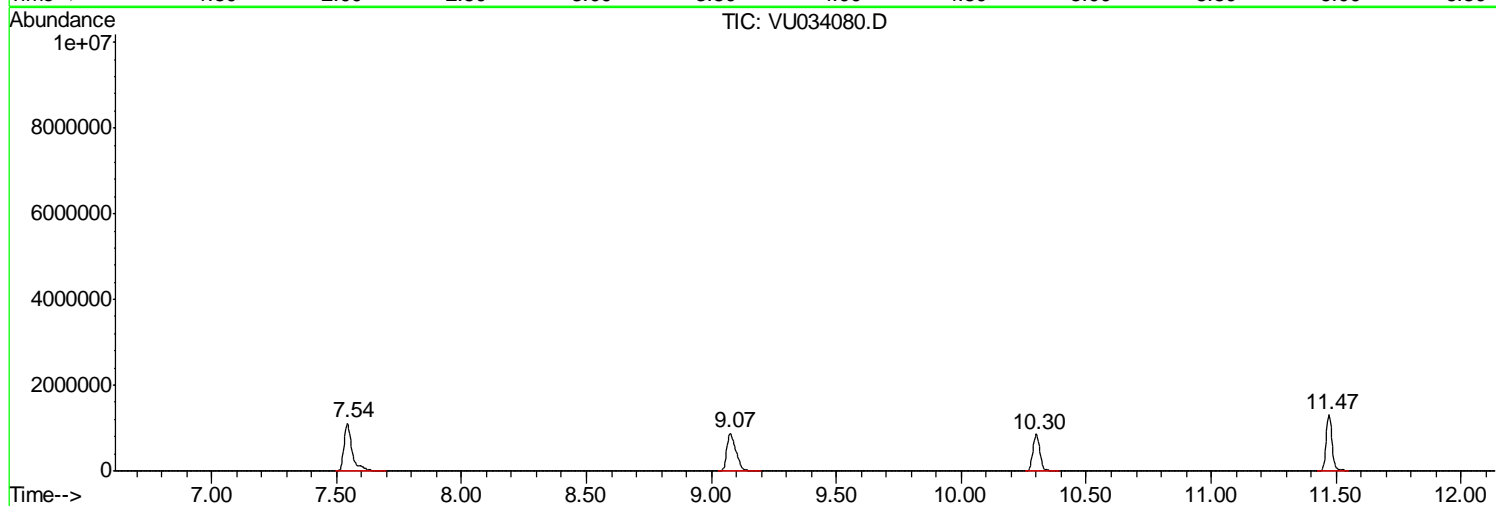
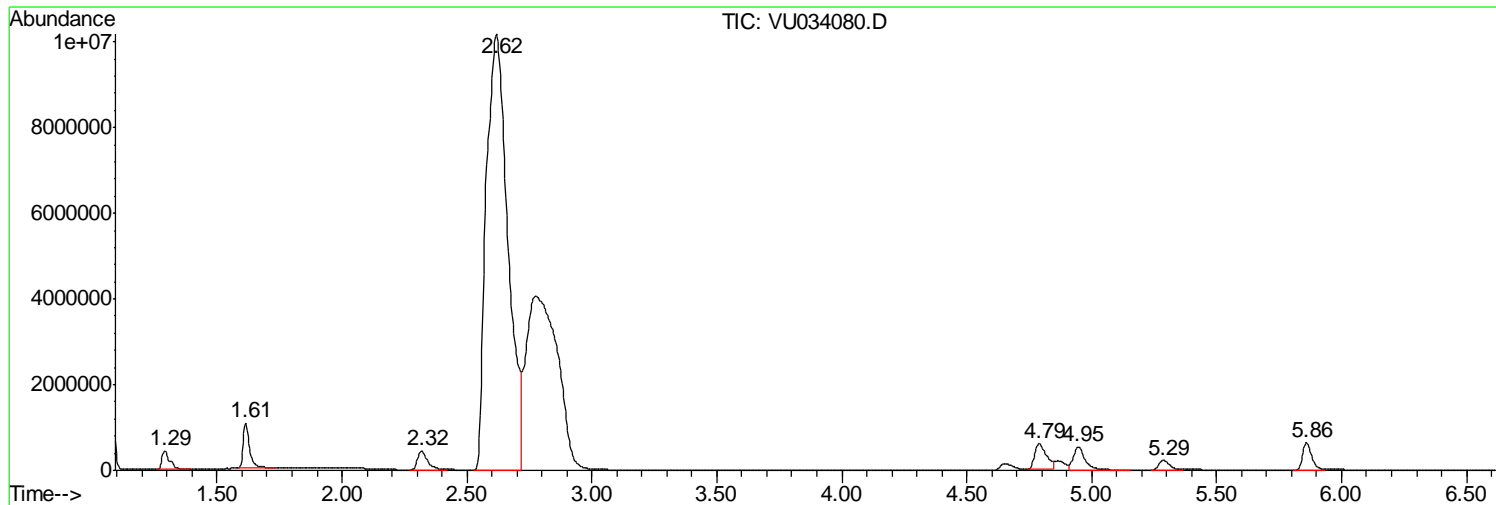
Sum of corrected areas: 79694633

Data Path : Z:\VOASRV\HPCHEM1\MSVOA U\DATA\VU083019\  
Data File : VU034080.D  
Acq On : 29 Aug 2019 22:15  
Operator : JC/SP  
Sample : K4609-02  
Misc : 5.0mL/MSVOA U/WATER  
ALS Vial : 30 Sample Multiplier: 1

Instrument :  
MSVOA\_U  
ClientSampleId :  
CARBON-DRUM

Quant Method : Z:\VOASRV\HPCHEM1\MSVOA\_U\METHOD\82U082919W.M  
Quant Title : SW846 8260

TIC Library : C:\DATABASE\NIST11.L  
TIC Integration Parameters: LSCINT.P



Data Path : Z:\VOASRV\HPCHEM1\MSVOA U\DATA\VU083019\  
 Data File : VU034080.D  
 Acq On : 29 Aug 2019 22:15  
 Operator : JC/SP  
 Sample : K4609-02  
 Misc : 5.0mL/MSVOA U/WATER  
 ALS Vial : 30 Sample Multiplier: 1

Instrument :  
 MSVOA\_U  
 ClientSampleId :  
 CARBON-DRUM

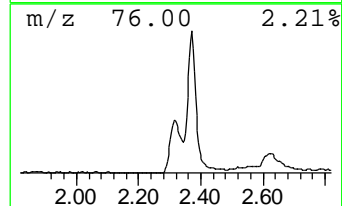
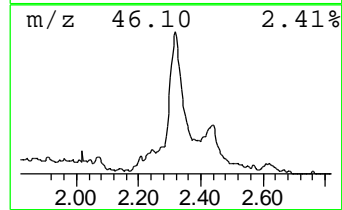
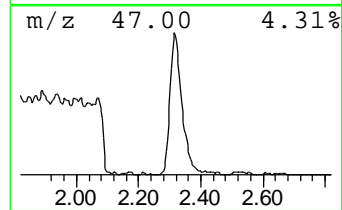
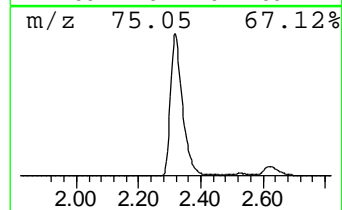
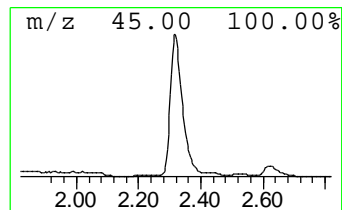
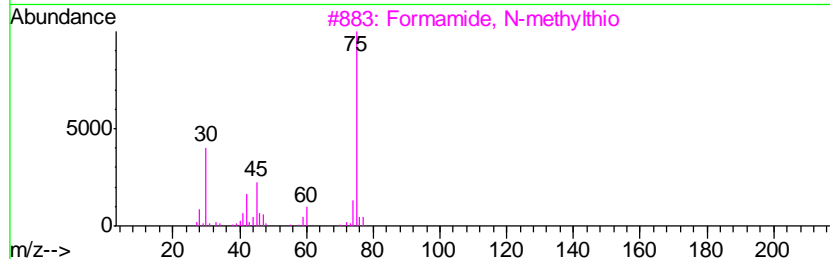
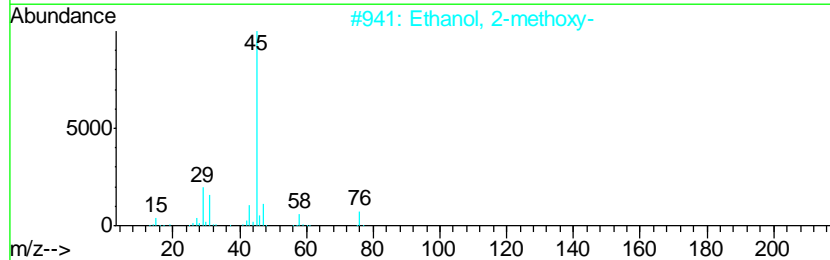
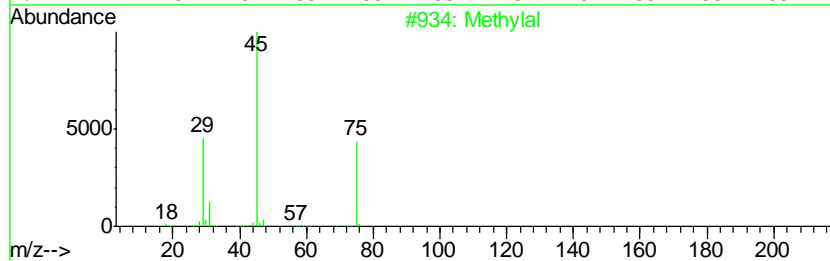
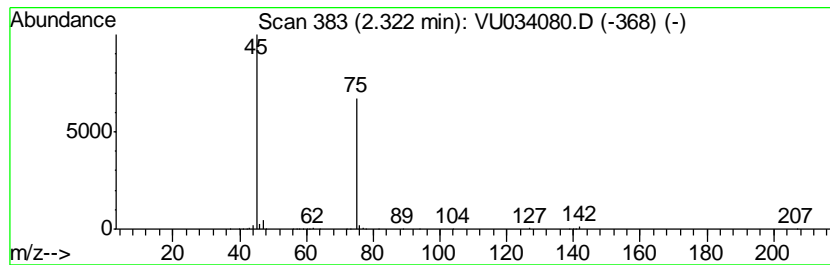
Quant Method : Z:\VOASRV\HPCHEM1\MSVOA\_U\METHOD\82U082919W.M  
 Quant Title : SW846 8260

TIC Library : C:\DATABASE\NIST11.L  
 TIC Integration Parameters: LSCINT.P

\*\*\*\*\*  
 Peak Number 2 Methylal Concentration Rank 3

| R.T. | EstConc    | Area    | Relative to ISTD   | R.T. |
|------|------------|---------|--------------------|------|
| 2.32 | 33.86 ug/l | 1224040 | Pentafluorobenzene | 4.95 |

| Hit# | of | Tentative ID            | MW | MolForm | CAS#        | Qual |
|------|----|-------------------------|----|---------|-------------|------|
| 1    | 5  | Methylal                | 76 | C3H8O2  | 000109-87-5 | 78   |
| 2    |    | Ethanol, 2-methoxy-     | 76 | C3H8O2  | 000109-86-4 | 4    |
| 3    |    | Formamide, N-methylthio | 75 | C2H5NS  | 018952-41-5 | 4    |
| 4    |    | Glycine                 | 75 | C2H5NO2 | 000056-40-6 | 4    |
| 5    |    | Formamide               | 45 | CH3NO   | 000075-12-7 | 4    |



Data Path : Z:\VOASRV\HPCHEM1\MSVOA U\DATA\VU083019\  
 Data File : VU034080.D  
 Acq On : 29 Aug 2019 22:15  
 Operator : JC/SP  
 Sample : K4609-02  
 Misc : 5.0mL/MSVOA U/WATER  
 ALS Vial : 30 Sample Multiplier: 1

Instrument :  
 MSVOA\_U  
 ClientSampled :  
 CARBON-DRUM

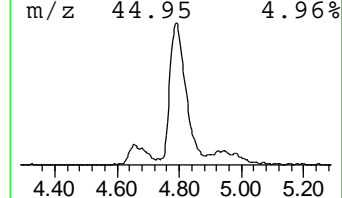
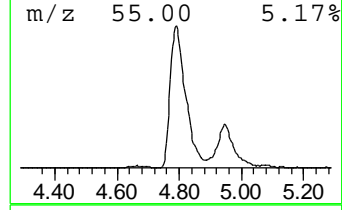
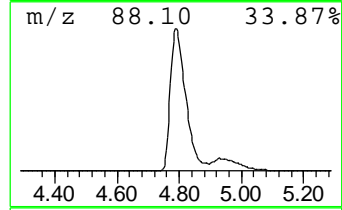
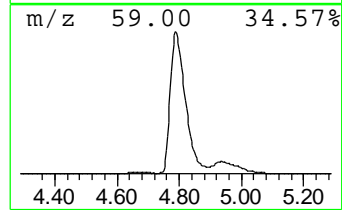
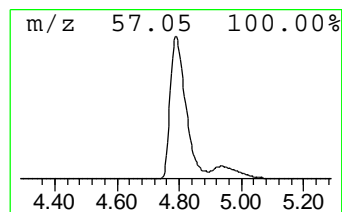
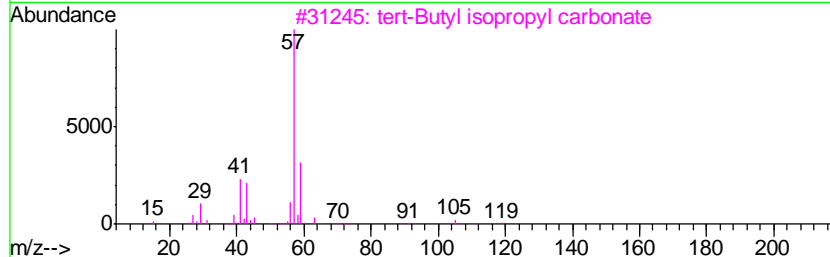
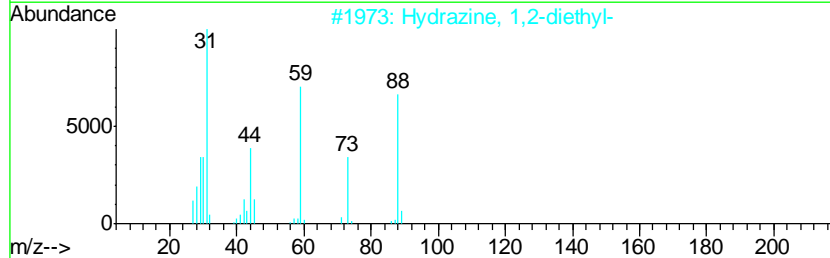
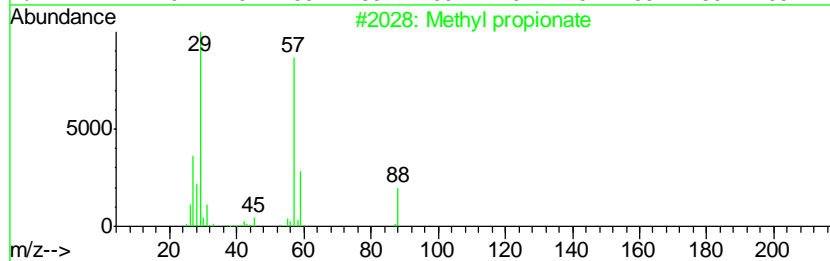
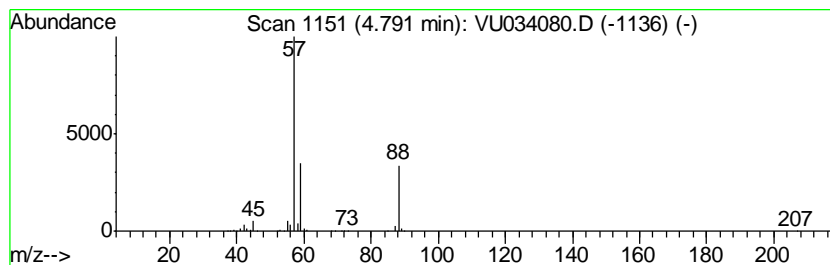
Quant Method : Z:\VOASRV\HPCHEM1\MSVOA\_U\METHOD\82U082919W.M  
 Quant Title : SW846 8260

TIC Library : C:\DATABASE\NIST11.L  
 TIC Integration Parameters: LSCINT.P

\*\*\*\*\*  
 Peak Number 3 Methyl propionate Concentration Rank 1

| R.T. | EstConc    | Area    | Relative to ISTD   | R.T. |
|------|------------|---------|--------------------|------|
| 4.79 | 55.44 ug/l | 2004280 | Pentafluorobenzene | 4.95 |

| Hit# | of | Tentative ID                        | MW  | MolForm   | CAS#        | Qual |
|------|----|-------------------------------------|-----|-----------|-------------|------|
| 1    | 5  | Methyl propionate                   | 88  | C4H8O2    | 000554-12-1 | 90   |
| 2    |    | Hydrazine, 1,2-diethyl-             | 88  | C4H12N2   | 001615-80-1 | 9    |
| 3    |    | tert-Butyl isopropyl carbonate      | 160 | C8H16O3   | 030221-21-7 | 9    |
| 4    |    | Hydrazinecarboxylic acid, 1,1-di... | 132 | C5H12N2O2 | 000870-46-2 | 9    |
| 5    |    | t-Butyl nitrite                     | 103 | C4H9NO2   | 000540-80-7 | 9    |



Data Path : Z:\VOASRV\HPCHEM1\MSVOA\_U\DATA\VU083019\  
Data File : VU034080.D  
Acq On : 29 Aug 2019 22:15  
Operator : JC/SP  
Sample : K4609-02  
Misc : 5.0mL/MSVOA\_U/WATER  
ALS Vial : 30 Sample Multiplier: 1

Instrument :  
MSVOA\_U  
ClientSampleId :  
CARBON-DRUM

Quant Method : Z:\VOASRV\HPCHEM1\MSVOA\_U\METHOD\82U082919W.M  
Quant Title : SW846 8260

TIC Library : C:\DATABASE\NIST11.L  
TIC Integration Parameters: LSCINT.P

| TIC Top Hit name  | RT   | EstConc | Units | Response | --Internal Standard-- |      |         |      |
|-------------------|------|---------|-------|----------|-----------------------|------|---------|------|
|                   |      |         |       |          | #                     | RT   | Resp    | Conc |
| Methylal          | 2.32 | 33.9    | ug/l  | 1224040  | 1                     | 4.95 | 1807720 | 50.0 |
| Methyl propionate | 4.79 | 55.4    | ug/l  | 2004280  | 1                     | 4.95 | 1807720 | 50.0 |