

Data Path : Z:\voasrv\HPCHEM1\MSVOA_U\Data\VU083022\
 Data File : VU050545.D
 Acq On : 31 Aug 2022 03:12
 Operator : SY/MD
 Sample : VSTDCCC050EC
 Misc : 5.0mL/MSVOA_U/WATER
 ALS Vial : 35 Sample Multiplier: 1

Instrument :
 MSVOA_U
 ClientSampleId :
 VSTD050183

Quant Time: Aug 31 04:24:19 2022
 Quant Method : Z:\voasrv\HPCHEM1\MSVOA_U\Method\SFAMULM083022WMA.M
 Quant Title : VOC Analysis
 QLast Update : Wed Aug 31 01:47:14 2022
 Response via : Initial Calibration

Compound	R.T.	QIon	Response	Conc	Units	Dev(Min)
Internal Standards						
1) 1,4-Difluorobenzene	6.250	114	353481	50.000	ug/L	0.00
28) Chlorobenzene-d5	9.417	117	349253	50.000	ug/L	0.00
58) 1,4-Dichlorobenzene-d4	11.812	152	158653	50.000	ug/L	0.00
System Monitoring Compounds						
4) Vinyl Chloride-d3	1.597	65	125512	46.296	ug/L	0.00
Spiked Amount	50.000	Range 60 - 135	Recovery =	92.600%		
7) Chloroethane-d5	1.900	69	108633	51.395	ug/L	0.00
Spiked Amount	50.000	Range 70 - 130	Recovery =	102.800%		
11) 1,1-Dichloroethene-d2	2.562	63	213403	46.621	ug/L	0.00
Spiked Amount	50.000	Range 60 - 125	Recovery =	93.240%		
21) 2-Butanone-d5	4.626	46	235395	99.280	ug/L	0.00
Spiked Amount	100.000	Range 40 - 130	Recovery =	99.280%		
24) Chloroform-d	5.063	84	265886	50.403	ug/L	0.00
Spiked Amount	50.000	Range 70 - 125	Recovery =	100.800%		
26) 1,2-Dichloroethane-d4	5.700	65	172151	50.240	ug/L	0.00
Spiked Amount	50.000	Range 70 - 125	Recovery =	100.480%		
32) Benzene-d6	5.726	84	531314	49.083	ug/L	0.00
Spiked Amount	50.000	Range 70 - 125	Recovery =	98.160%		
36) 1,2-Dichloropropane-d6	6.690	67	179247	49.732	ug/L	0.00
Spiked Amount	50.000	Range 70 - 120	Recovery =	99.460%		
41) Toluene-d8	7.896	98	466863	49.575	ug/L	0.00
Spiked Amount	50.000	Range 80 - 120	Recovery =	99.160%		
43) trans-1,3-Dichloroprop...	8.179	79	62020	42.786	ug/L	0.00
Spiked Amount	50.000	Range 60 - 125	Recovery =	85.580%		
47) 2-Hexanone-d5	8.636	63	124172	95.150	ug/L	0.00
Spiked Amount	100.000	Range 45 - 130	Recovery =	95.150%		
56) 1,1,2,2-Tetrachloroeth...	10.755	84	272633	48.495	ug/L	0.00
Spiked Amount	50.000	Range 65 - 120	Recovery =	97.000%		
66) 1,2-Dichlorobenzene-d4	12.192	152	150522	43.820	ug/L	0.00
Spiked Amount	50.000	Range 80 - 120	Recovery =	87.640%		
Target Compounds						
2) Dichlorodifluoromethane	1.382	85	96406	43.321	ug/L	98
3) Chloromethane	1.517	50	176063	47.754	ug/L	98
5) Vinyl chloride	1.601	62	161024	47.300	ug/L	99
6) Bromomethane	1.842	94	71196	45.661	ug/L	97
8) Chloroethane	1.922	64	105560	49.270	ug/L	99
9) Trichlorofluoromethane	2.131	101	178180	45.502	ug/L	100
10) 1,1,2-Trichloro-1,2,2-...	2.575	101	101252	43.437	ug/L	99
12) 1,1-Dichloroethene	2.575	96	115036	47.227	ug/L	99
13) Acetone	2.629	43	176999	96.096	ug/L	100
14) Carbon disulfide	2.787	76	234347	39.152	ug/L	99
15) Methyl Acetate	2.948	43	191006	50.529	ug/L	100
16) Methylene chloride	3.041	84	184101	46.491	ug/L	97
17) trans-1,2-Dichloroethene	3.350	96	126735	48.040	ug/L	96
18) Methyl tert-butyl Ether	3.363	73	449129	50.227	ug/L	99
19) 1,1-Dichloroethane	3.867	63	267557	49.784	ug/L	98
20) cis-1,2-Dichloroethene	4.665	96	157010	50.003	ug/L	98
22) 2-Butanone	4.703	43	280983	98.627	ug/L	99
23) Bromochloromethane	4.973	128	84665	50.376	ug/L	97
25) Chloroform	5.086	83	278972	50.280	ug/L	99

Data Path : Z:\voasrv\HPCHEM1\MSVOA_U\Data\VU083022\
 Data File : VU050545.D
 Acq On : 31 Aug 2022 03:12
 Operator : SY/MD
 Sample : VSTDCCC050EC
 Misc : 5.0mL/MSVOA_U/WATER
 ALS Vial : 35 Sample Multiplier: 1

Instrument :
 MSVOA_U
 ClientSampleId :
 VSTD050183

Quant Time: Aug 31 04:24:19 2022
 Quant Method : Z:\voasrv\HPCHEM1\MSVOA_U\Method\SFAMULM083022WMA.M
 Quant Title : VOC Analysis
 QLast Update : Wed Aug 31 01:47:14 2022
 Response via : Initial Calibration

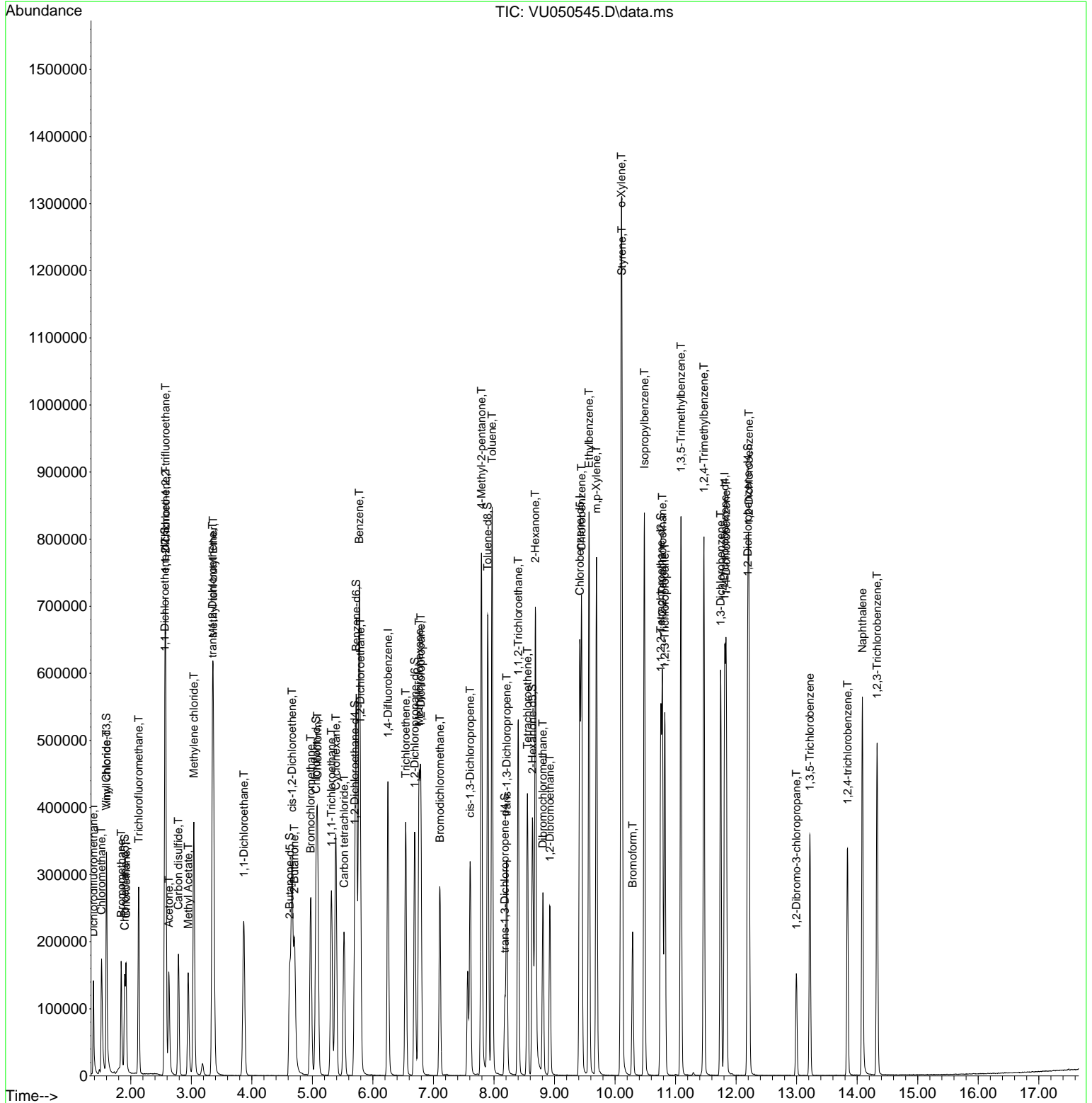
Compound	R.T.	QIon	Response	Conc	Units	Dev(Min)
27) 1,2-Dichloroethane	5.793	62	224152	50.930	ug/L	100
29) Cyclohexane	5.388	56	169634	43.463	ug/L	99
30) 1,1,1-Trichloroethane	5.314	97	200589	47.404	ug/L	100
31) Carbon tetrachloride	5.523	117	147596	45.684	ug/L	97
33) Benzene	5.774	78	625360	49.289	ug/L	100
34) Trichloroethene	6.542	95	133793	45.954	ug/L	99
35) Methylcyclohexane	6.764	83	163207	41.692	ug/L	99
37) 1,2-Dichloropropane	6.790	63	170268	49.016	ug/L	100
38) Bromodichloromethane	7.105	83	186699	47.502	ug/L	98
39) cis-1,3-Dichloropropene	7.607	75	193400	42.256	ug/L	99
40) 4-Methyl-2-pentanone	7.793	43	500550	99.547	ug/L	100
42) Toluene	7.970	91	627623	49.861	ug/L	100
44) trans-1,3-Dichloropropene	8.211	75	180264	43.234	ug/L	99
45) 1,1,2-Trichloroethane	8.401	97	165820	49.179	ug/L	99
46) Tetrachloroethene	8.552	164	91513	44.934	ug/L	95
48) 2-Hexanone	8.684	43	422240	98.230	ug/L	98
49) Dibromochloromethane	8.809	129	138510	47.315	ug/L	98
50) 1,2-Dibromoethane	8.922	107	169723	48.764	ug/L	100
51) Chlorobenzene	9.446	112	375038	47.876	ug/L	98
52) Ethylbenzene	9.571	91	589035	48.346	ug/L	100
53) m,p-Xylene	9.693	106	226429	49.328	ug/L	100
54) o-Xylene	10.102	106	234259	50.167	ug/L	100
55) Styrene	10.115	104	399413	51.545	ug/L	99
57) 1,1,2,2-Tetrachloroethane	10.783	83	294148	48.895	ug/L	100
59) Bromoform	10.291	173	97252	45.782	ug/L	98
60) 1,2,3-Trichloropropane	10.822	75	229868	48.267	ug/L	99
61) Isopropylbenzene	10.484	105	536361	47.413	ug/L	100
62) 1,3,5-Trimethylbenzene	11.089	105	446091	47.968	ug/L	99
63) 1,2,4-Trimethylbenzene	11.468	105	438313	48.524	ug/L	100
64) 1,3-Dichlorobenzene	11.745	146	245723	45.522	ug/L	100
65) 1,4-Dichlorobenzene	11.835	146	242318	44.270	ug/L	99
67) 1,2-Dichlorobenzene	12.211	146	252844	43.208	ug/L	98
68) 1,2-Dibromo-3-chloropr...	12.996	75	37918	33.365	ug/L	97
69) 1,3,5-Trichlorobenzene	13.217	180	113153	30.633	ug/L	99
70) 1,2,4-trichlorobenzene	13.841	180	106304	32.356	ug/L	99
71) Naphthalene	14.086	128	451254	33.476	ug/L	100
72) 1,2,3-Trichlorobenzene	14.330	180	154551	40.703	ug/L	99

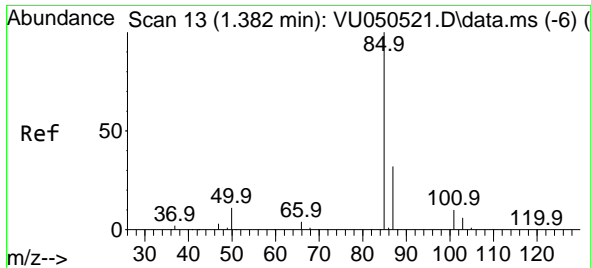
(#) = qualifier out of range (m) = manual integration (+) = signals summed

Data Path : Z:\voasrv\HPCHEM1\MSVOA_U\Data\VU083022\
 Data File : VU050545.D
 Acq On : 31 Aug 2022 03:12
 Operator : SY/MD
 Sample : VSTDCCC050EC
 Misc : 5.0mL/MSVOA_U/WATER
 ALS Vial : 35 Sample Multiplier: 1

Instrument :
 MSVOA_U
 ClientSampleId :
 VSTD050183

Quant Time: Aug 31 04:24:19 2022
 Quant Method : Z:\voasrv\HPCHEM1\MSVOA_U\Method\SFAMULM083022WMA.M
 Quant Title : VOC Analysis
 QLast Update : Wed Aug 31 01:47:14 2022
 Response via : Initial Calibration

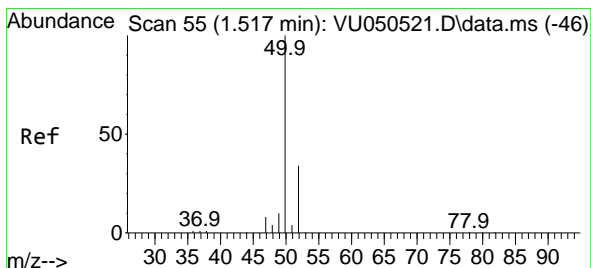
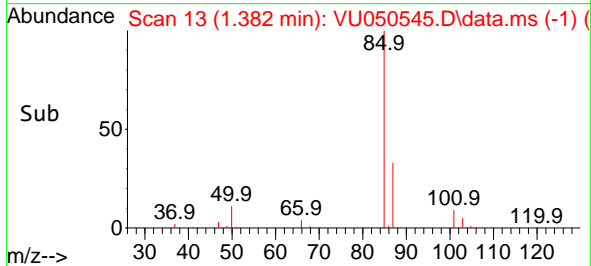
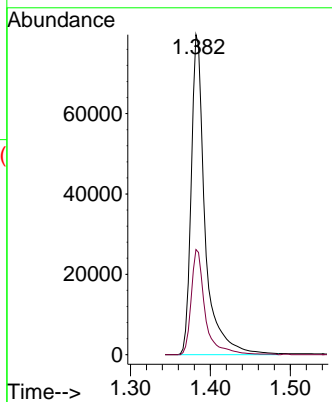
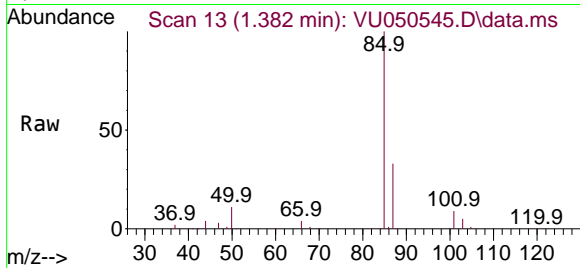




#2
 Dichlorodifluoromethane
 Concen: 43.321 ug/L
 RT: 1.382 min Scan# 11
 Delta R.T. 0.000 min
 Lab File: VU050545.D
 Acq: 31 Aug 2022 03:12

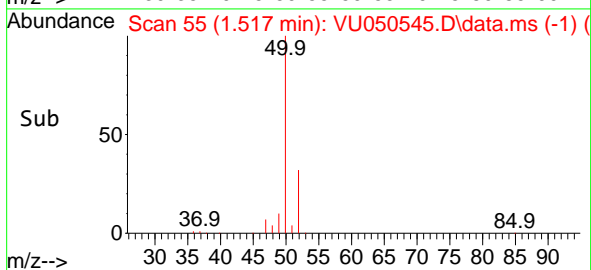
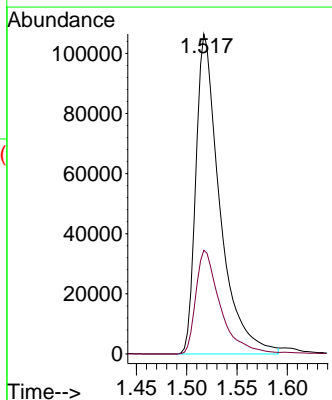
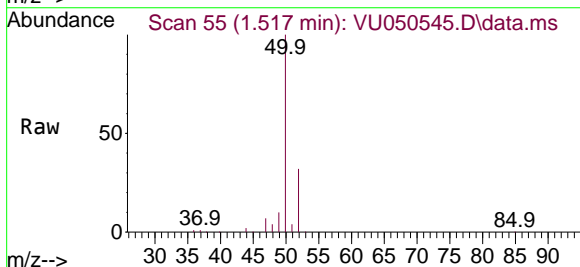
Instrument :
 MSVOA_U
 ClientSampleId :
 VSTD050183

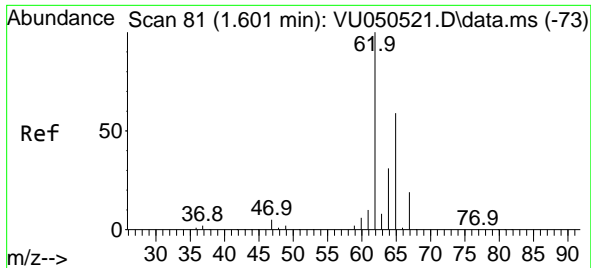
Tgt Ion: 85 Resp: 96406
 Ion Ratio Lower Upper
 85 100
 87 32.9 25.5 38.3



#3
 Chloromethane
 Concen: 47.754 ug/L
 RT: 1.517 min Scan# 55
 Delta R.T. 0.000 min
 Lab File: VU050545.D
 Acq: 31 Aug 2022 03:12

Tgt Ion: 50 Resp: 176063
 Ion Ratio Lower Upper
 50 100
 52 32.4 23.6 43.8

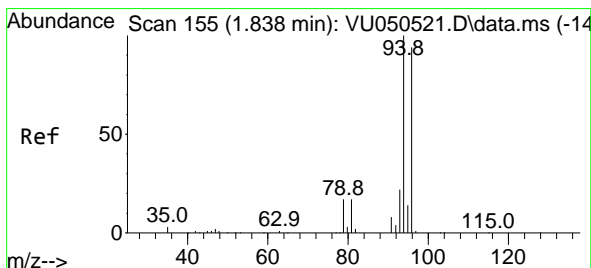
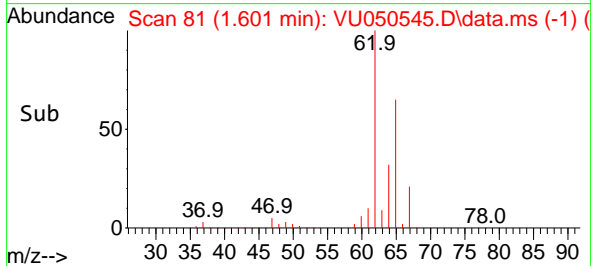
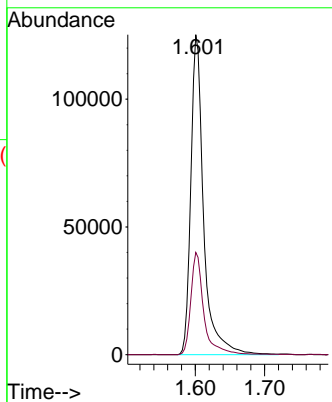
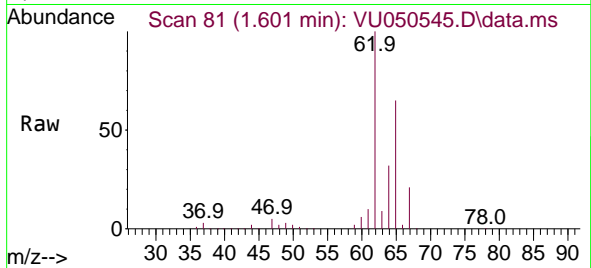




#5
 Vinyl chloride
 Concen: 47.300 ug/L
 RT: 1.601 min Scan# 81
 Delta R.T. 0.000 min
 Lab File: VU050545.D
 Acq: 31 Aug 2022 03:12

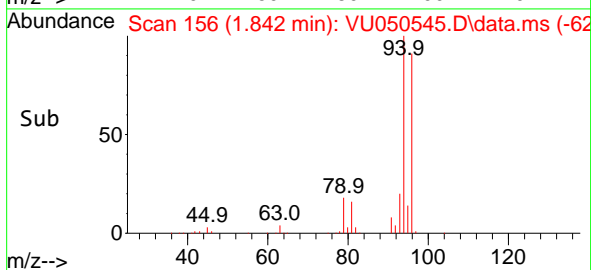
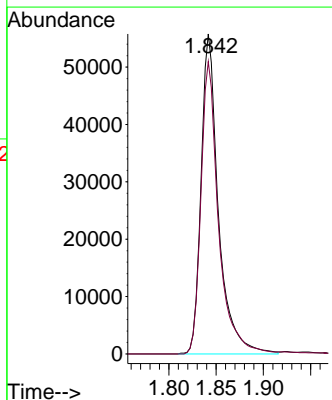
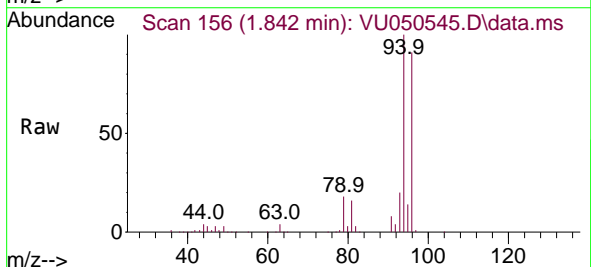
Instrument :
 MSVOA_U
 ClientSampleId :
 VSTD050183

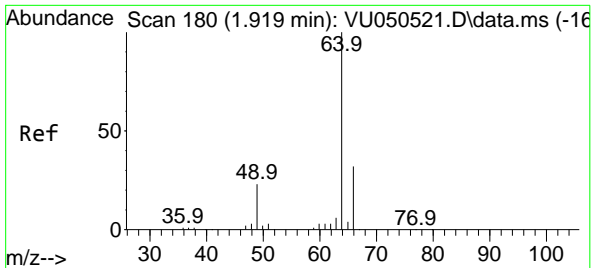
Tgt Ion: 62 Resp: 161024
 Ion Ratio Lower Upper
 62 100
 64 32.0 22.9 42.5



#6
 Bromomethane
 Concen: 45.661 ug/L
 RT: 1.842 min Scan# 156
 Delta R.T. 0.003 min
 Lab File: VU050545.D
 Acq: 31 Aug 2022 03:12

Tgt Ion: 94 Resp: 71196
 Ion Ratio Lower Upper
 94 100
 96 91.4 65.9 122.3

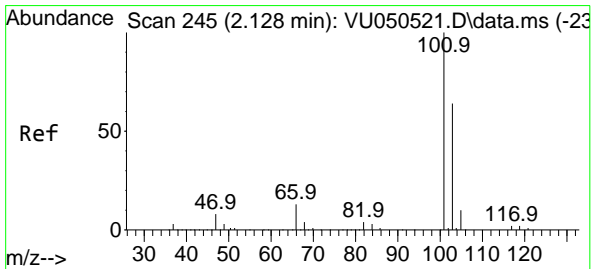
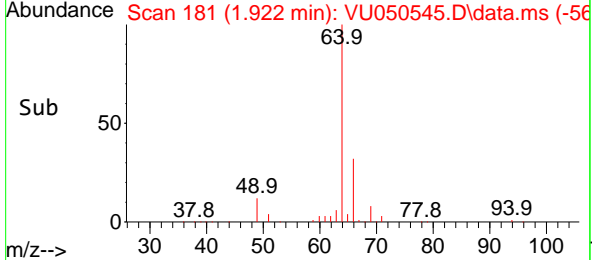
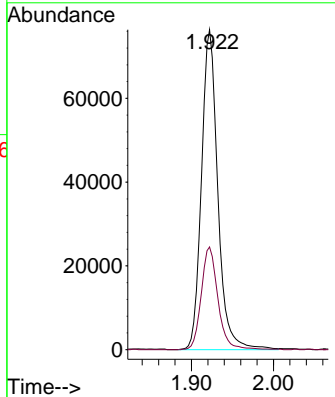
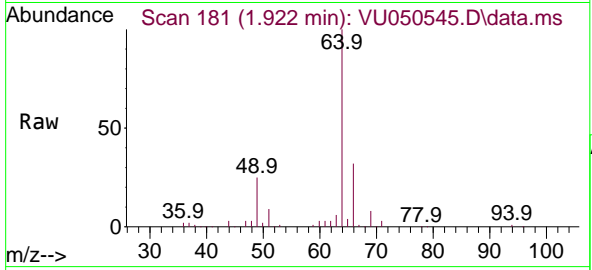




#8
 Chloroethane
 Concen: 49.270 ug/L
 RT: 1.922 min Scan# 181
 Delta R.T. 0.003 min
 Lab File: VU050545.D
 Acq: 31 Aug 2022 03:12

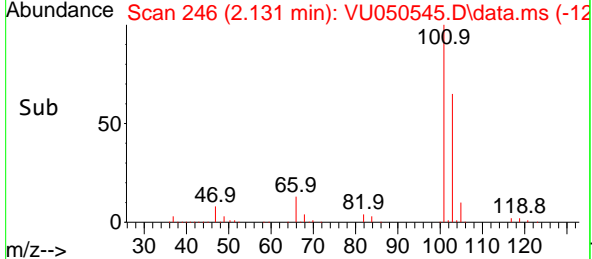
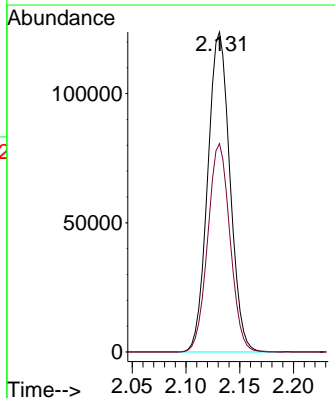
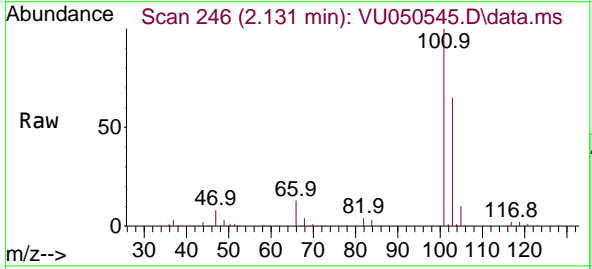
Instrument : MSVOA_U
 ClientSampleId : VSTD050183

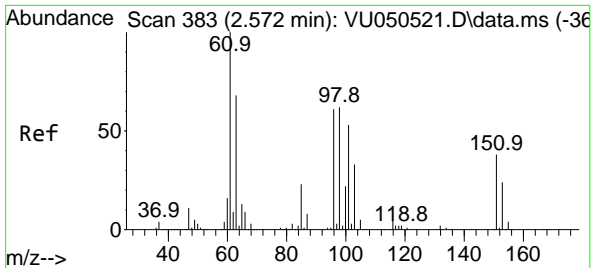
Tgt Ion: 64 Resp: 105560
 Ion Ratio Lower Upper
 64 100
 66 32.1 22.2 41.2



#9
 Trichlorofluoromethane
 Concen: 45.502 ug/L
 RT: 2.131 min Scan# 246
 Delta R.T. 0.003 min
 Lab File: VU050545.D
 Acq: 31 Aug 2022 03:12

Tgt Ion:101 Resp: 178180
 Ion Ratio Lower Upper
 101 100
 103 65.2 52.0 78.0



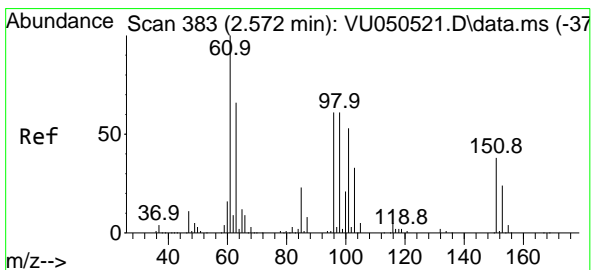
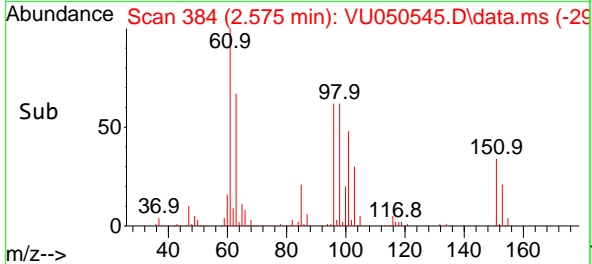
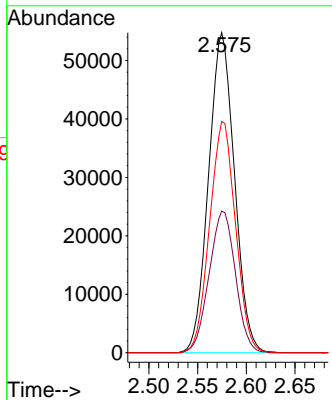
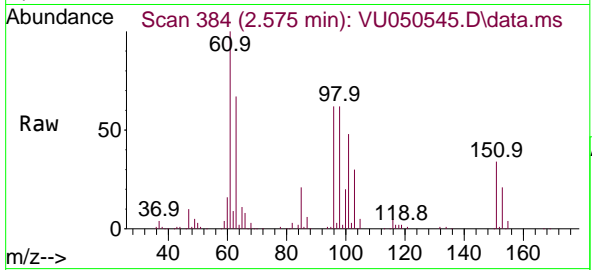


#10
 1,1,2-Trichloro-1,2,2-trifluoroethane
 Concen: 43.437 ug/L
 RT: 2.575 min Scan# 384
 Delta R.T. 0.003 min
 Lab File: VU050545.D
 Acq: 31 Aug 2022 03:12

Instrument :
 MSVOA_U
 ClientSampleId :
 VSTD050183

Tgt Ion:101 Resp: 101252

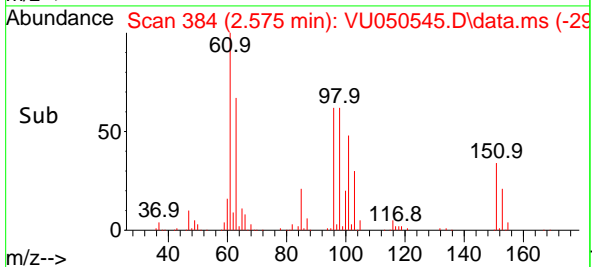
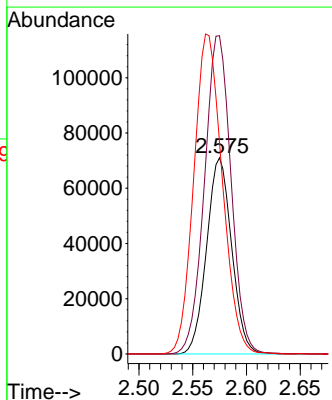
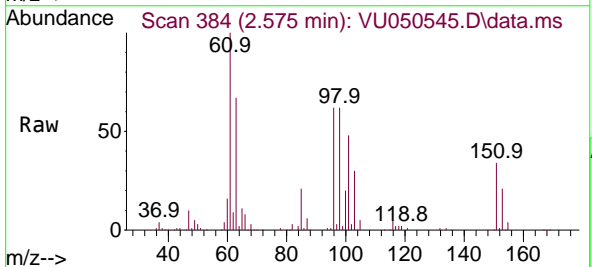
Ion	Ratio	Lower	Upper
101	100		
85	44.9	34.6	52.0
151	72.2	58.2	87.2

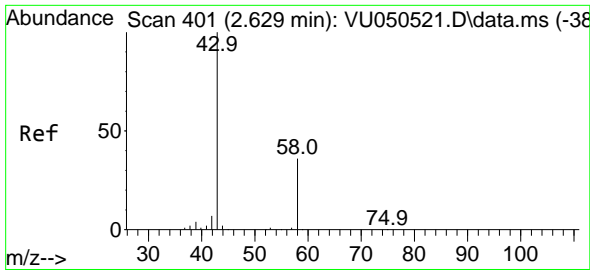


#12
 1,1-Dichloroethene
 Concen: 47.227 ug/L
 RT: 2.575 min Scan# 384
 Delta R.T. 0.003 min
 Lab File: VU050545.D
 Acq: 31 Aug 2022 03:12

Tgt Ion: 96 Resp: 115036

Ion	Ratio	Lower	Upper
96	100		
61	162.2	113.5	210.9
63	108.1	78.0	144.9

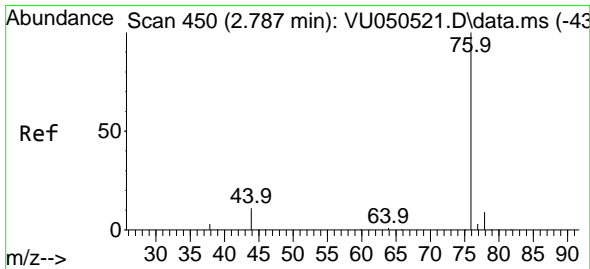
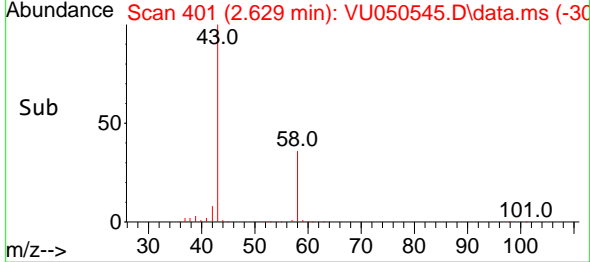
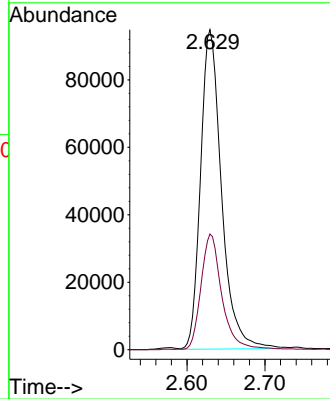
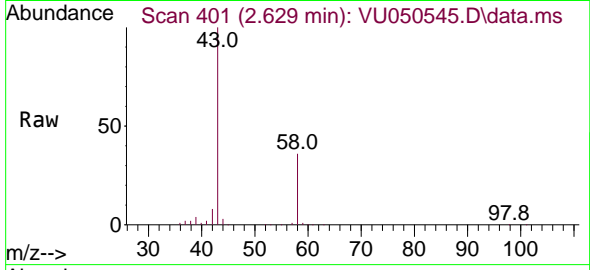




#13
 Acetone
 Concen: 96.096 ug/L
 RT: 2.629 min Scan# 401
 Delta R.T. 0.000 min
 Lab File: VU050545.D
 Acq: 31 Aug 2022 03:12

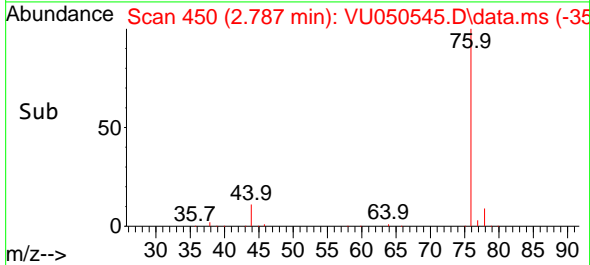
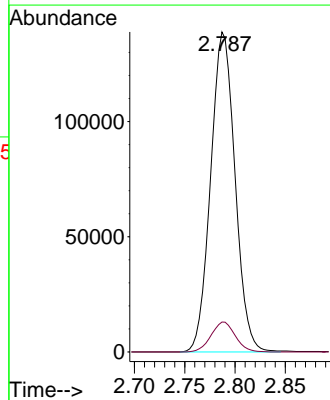
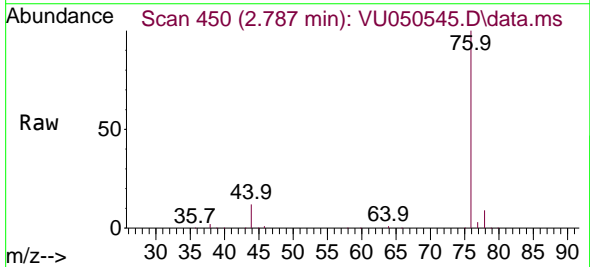
Instrument :
 MSVOA_U
 ClientSampleId :
 VSTD050183

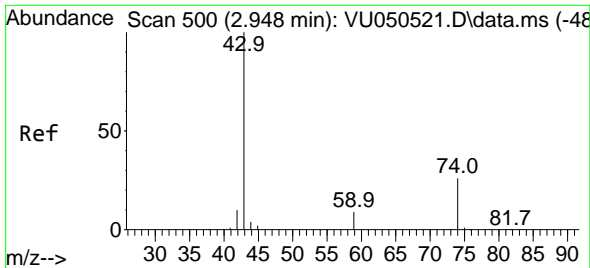
Tgt Ion: 43 Resp: 176999
 Ion Ratio Lower Upper
 43 100
 58 35.7 0.0 71.6



#14
 Carbon disulfide
 Concen: 39.152 ug/L
 RT: 2.787 min Scan# 450
 Delta R.T. 0.000 min
 Lab File: VU050545.D
 Acq: 31 Aug 2022 03:12

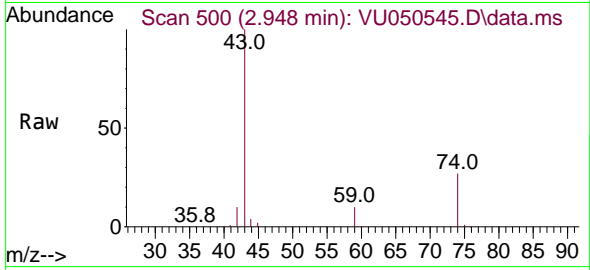
Tgt Ion: 76 Resp: 234347
 Ion Ratio Lower Upper
 76 100
 78 9.3 7.1 10.7



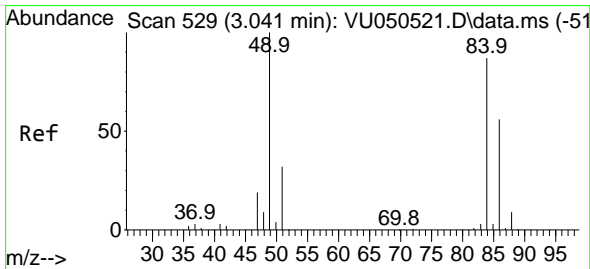
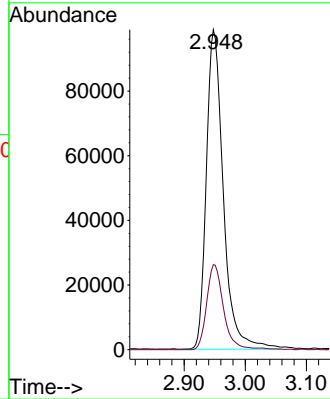
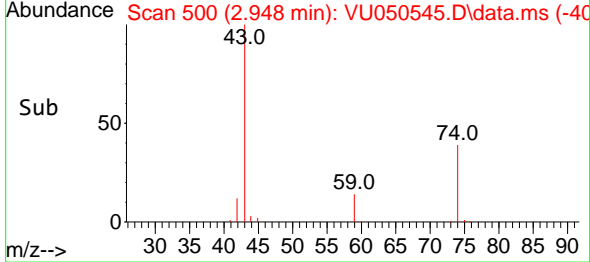


#15
 Methyl Acetate
 Concen: 50.529 ug/L
 RT: 2.948 min Scan# 500
 Delta R.T. 0.000 min
 Lab File: VU050545.D
 Acq: 31 Aug 2022 03:12

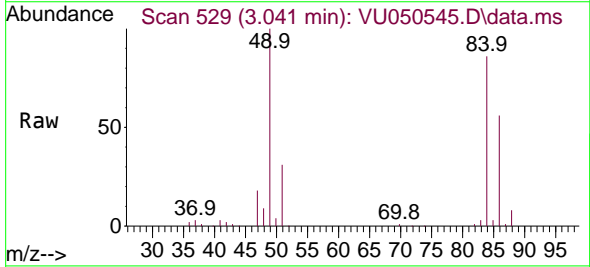
Instrument : MSVOA_U
 ClientSampleId : VSTD050183



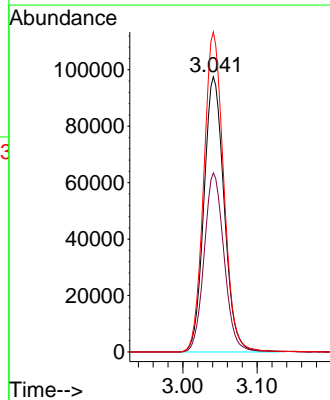
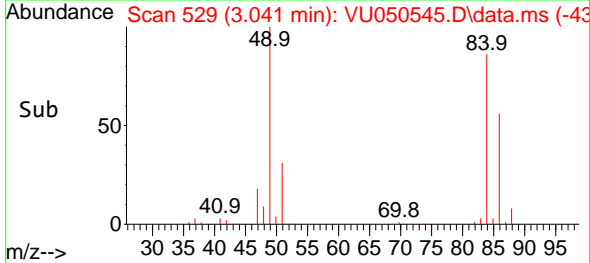
Tgt Ion: 43 Resp: 191006
 Ion Ratio Lower Upper
 43 100
 74 26.1 21.0 31.6

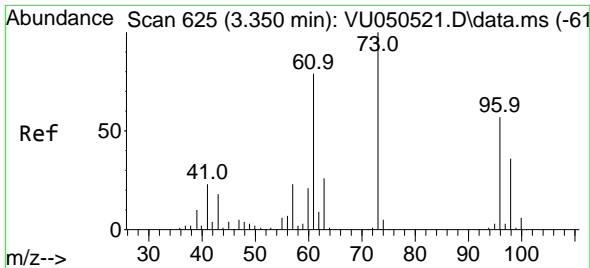


#16
 Methylene chloride
 Concen: 46.491 ug/L
 RT: 3.041 min Scan# 529
 Delta R.T. 0.000 min
 Lab File: VU050545.D
 Acq: 31 Aug 2022 03:12



Tgt Ion: 84 Resp: 184101
 Ion Ratio Lower Upper
 84 100
 86 65.1 44.3 82.3
 49 116.3 78.8 146.3





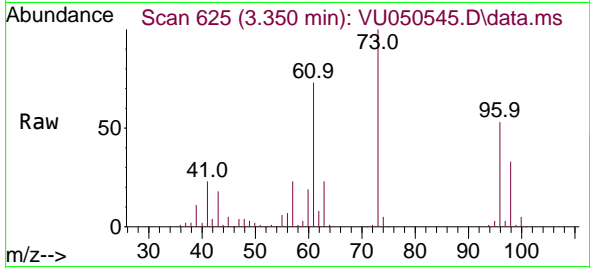
#17
 trans-1,2-Dichloroethene
 Concen: 48.040 ug/L
 RT: 3.350 min Scan# 61
 Delta R.T. 0.000 min
 Lab File: VU050545.D
 Acq: 31 Aug 2022 03:12

Instrument :

MSVOA_U

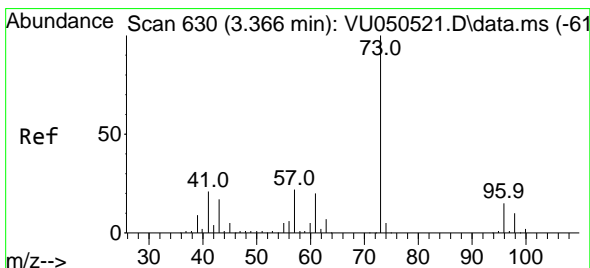
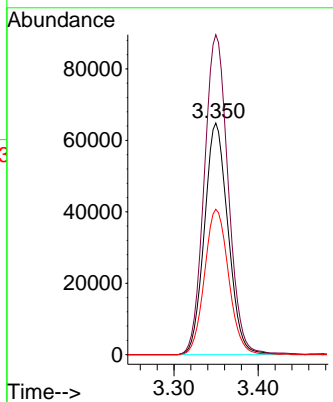
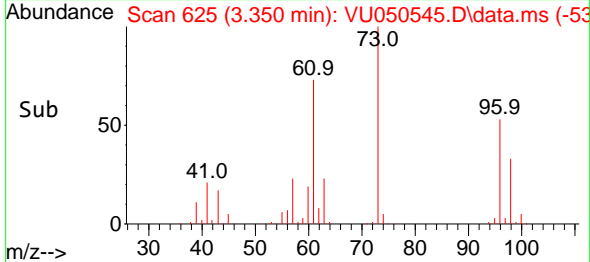
ClientSampleId :

VSTD050183

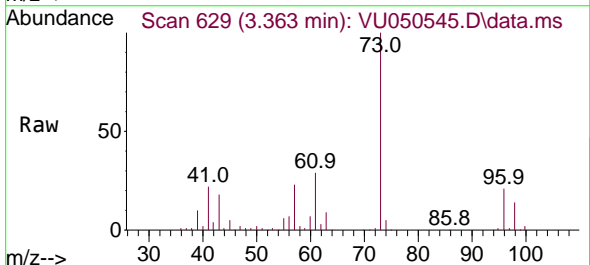


Tgt Ion: 96 Resp: 126735

Ion	Ratio	Lower	Upper
96	100		
61	138.1	99.7	185.1
98	62.8	46.2	85.8

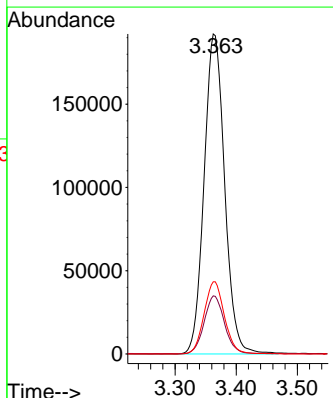
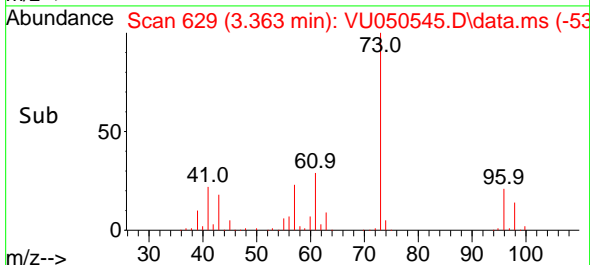


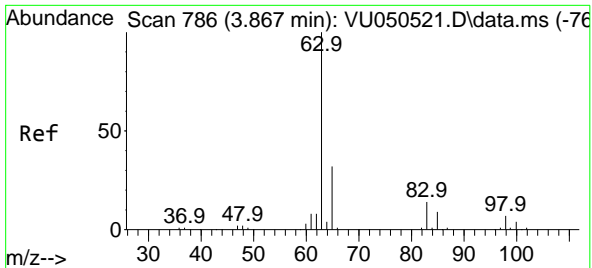
#18
 Methyl tert-butyl Ether
 Concen: 50.227 ug/L
 RT: 3.363 min Scan# 629
 Delta R.T. -0.003 min
 Lab File: VU050545.D
 Acq: 31 Aug 2022 03:12



Tgt Ion: 73 Resp: 449129

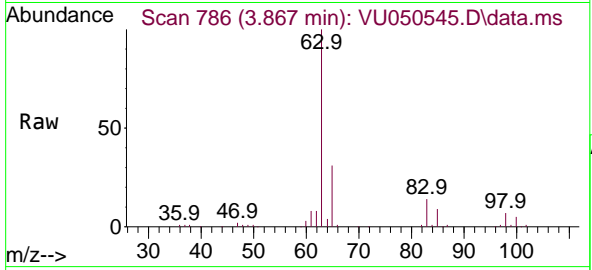
Ion	Ratio	Lower	Upper
73	100		
43	17.9	13.9	20.9
57	22.4	17.8	26.6





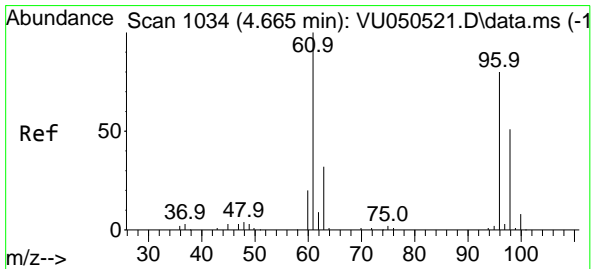
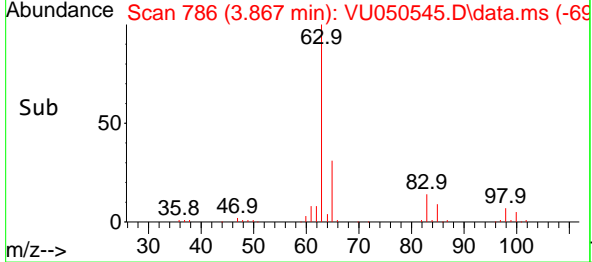
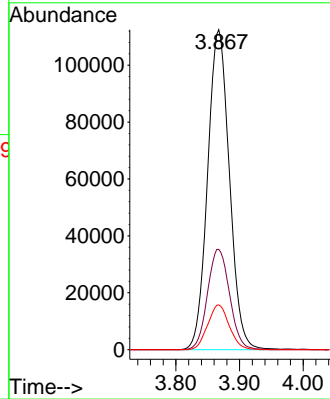
#19
 1,1-Dichloroethane
 Concen: 49.784 ug/L
 RT: 3.867 min Scan# 786
 Delta R.T. 0.000 min
 Lab File: VU050545.D
 Acq: 31 Aug 2022 03:12

Instrument : MSVOA_U
 ClientSampleId : VSTD050183

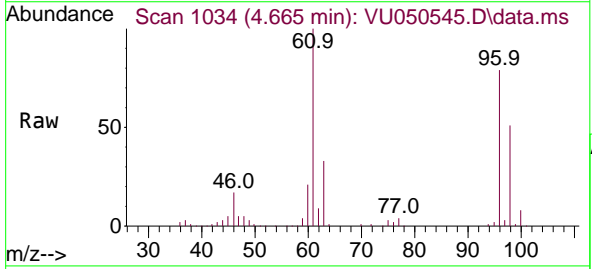


Tgt Ion: 63 Resp: 267557

Ion	Ratio	Lower	Upper
63	100		
65	31.4	22.5	41.9
83	14.0	9.3	17.3

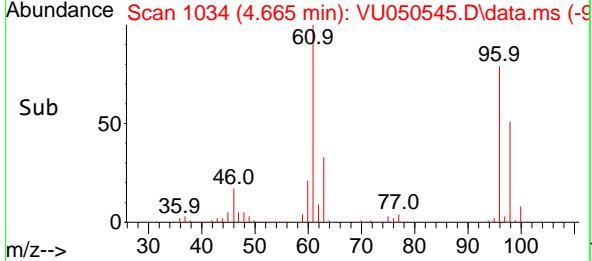
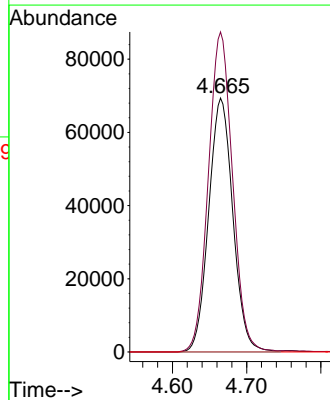


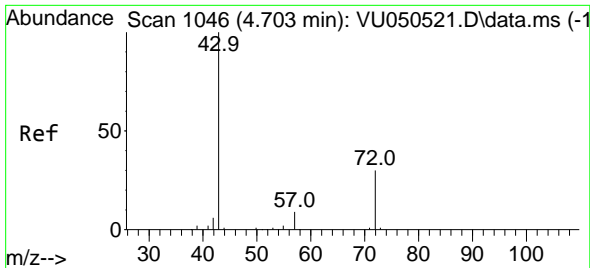
#20
 cis-1,2-Dichloroethene
 Concen: 50.003 ug/L
 RT: 4.665 min Scan# 1034
 Delta R.T. 0.000 min
 Lab File: VU050545.D
 Acq: 31 Aug 2022 03:12



Tgt Ion: 96 Resp: 157010

Ion	Ratio	Lower	Upper
96	100		
61	126.0	86.8	161.2
68	0.0	0.0	0.0

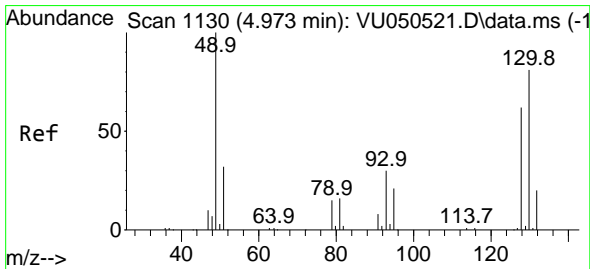
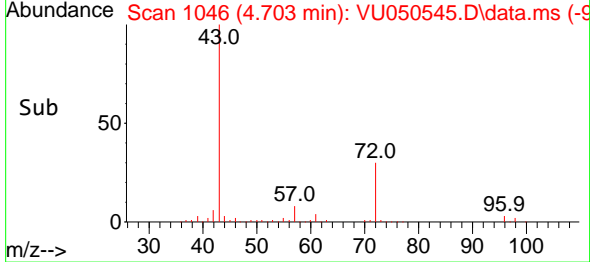
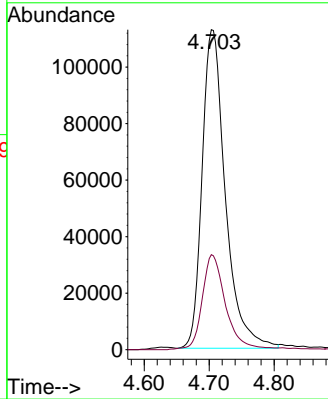
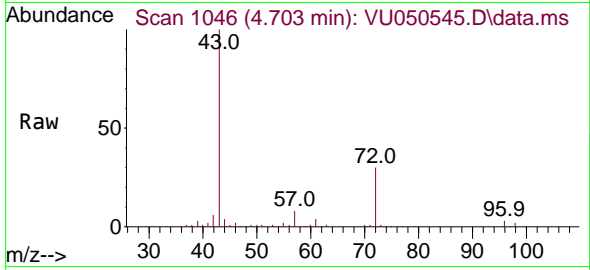




#22
 2-Butanone
 Concen: 98.627 ug/L
 RT: 4.703 min Scan# 1046
 Delta R.T. 0.000 min
 Lab File: VU050545.D
 Acq: 31 Aug 2022 03:12

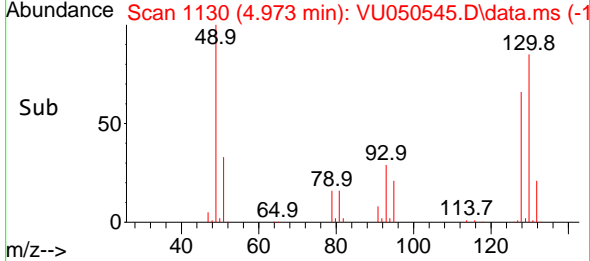
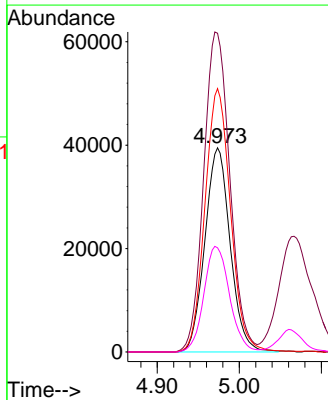
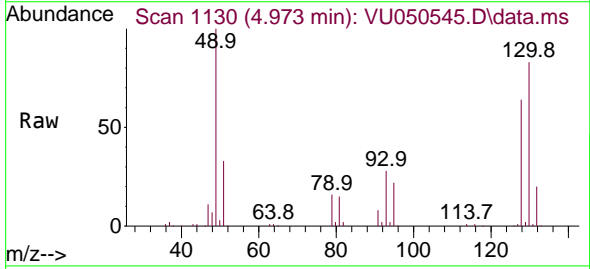
Instrument : MSVOA_U
 ClientSampleId : VSTD050183

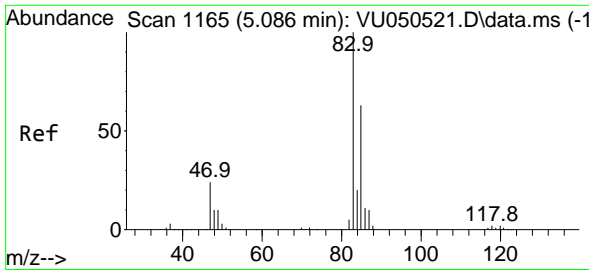
Tgt Ion: 43 Resp: 280983
 Ion Ratio Lower Upper
 43 100
 72 29.9 14.8 44.3



#23
 Bromochloromethane
 Concen: 50.376 ug/L
 RT: 4.973 min Scan# 1130
 Delta R.T. 0.000 min
 Lab File: VU050545.D
 Acq: 31 Aug 2022 03:12

Tgt Ion:128 Resp: 84665
 Ion Ratio Lower Upper
 128 100
 49 156.2 111.9 207.7
 130 129.0 87.8 163.0
 51 51.0 41.0 61.4

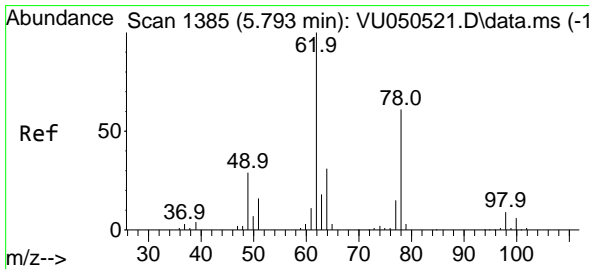
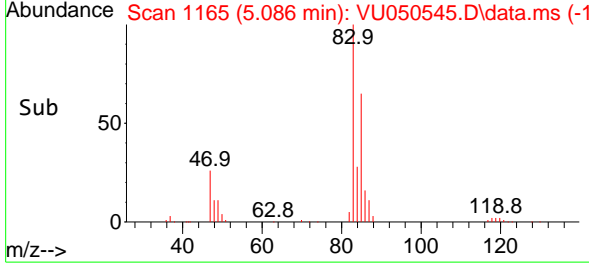
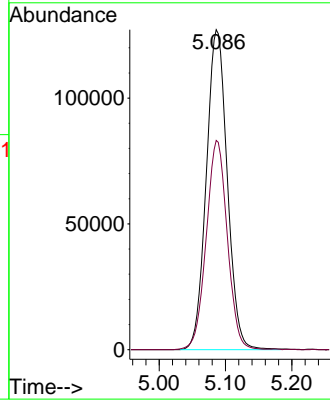
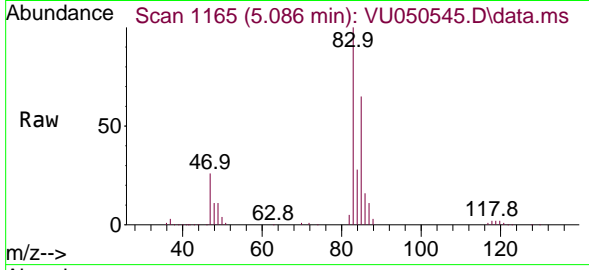




#25
 Chloroform
 Concen: 50.280 ug/L
 RT: 5.086 min Scan# 1165
 Delta R.T. 0.000 min
 Lab File: VU050545.D
 Acq: 31 Aug 2022 03:12

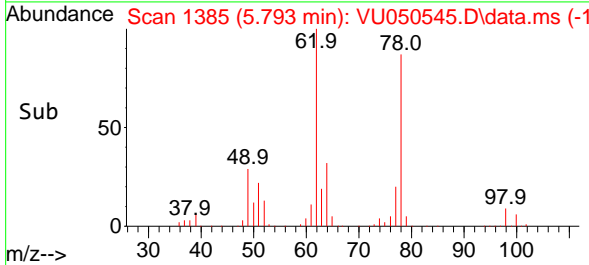
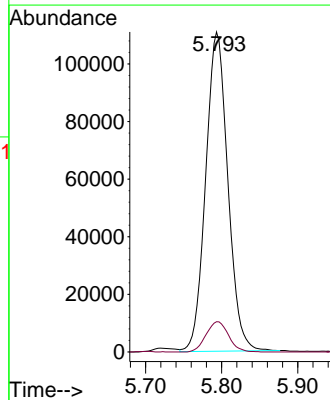
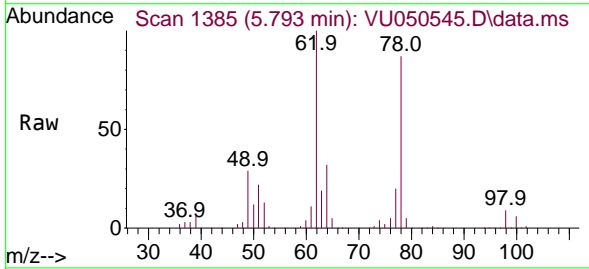
Instrument : MSVOA_U
 ClientSampleId : VSTD050183

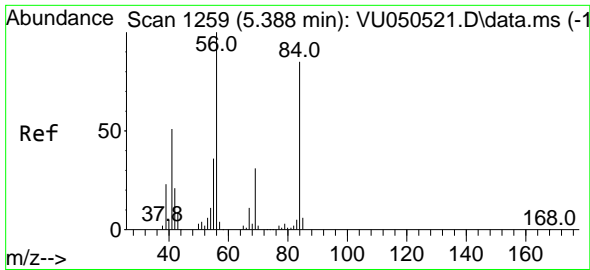
Tgt Ion: 83 Resp: 278972
 Ion Ratio Lower Upper
 83 100
 85 65.4 46.3 85.9



#27
 1,2-Dichloroethane
 Concen: 50.930 ug/L
 RT: 5.793 min Scan# 1385
 Delta R.T. 0.000 min
 Lab File: VU050545.D
 Acq: 31 Aug 2022 03:12

Tgt Ion: 62 Resp: 224152
 Ion Ratio Lower Upper
 62 100
 98 9.5 7.5 11.3



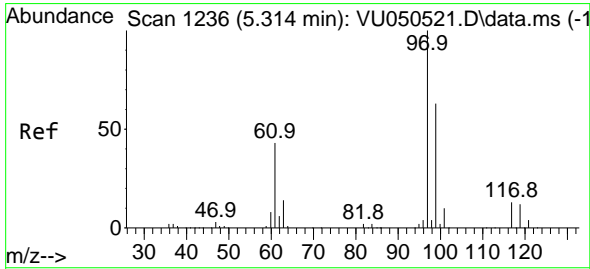
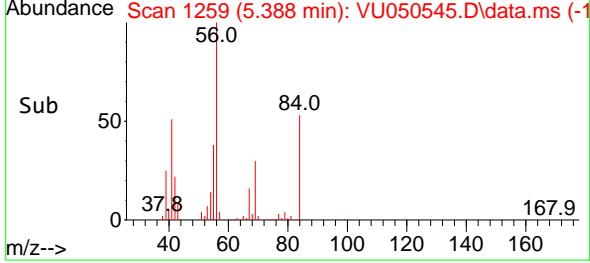
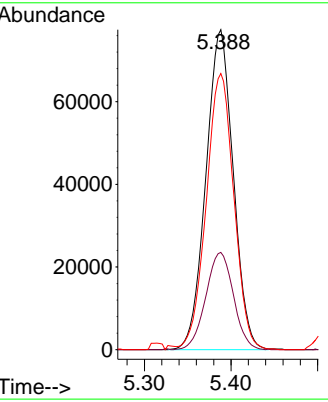
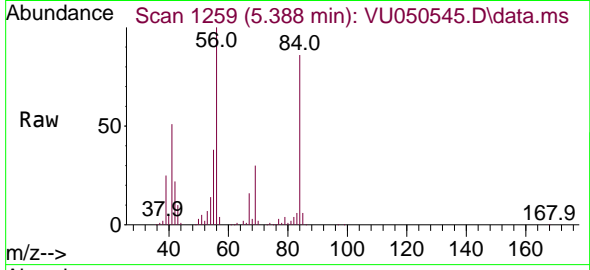


#29
 Cyclohexane
 Concen: 43.463 ug/L
 RT: 5.388 min Scan# 1259
 Delta R.T. 0.000 min
 Lab File: VU050545.D
 Acq: 31 Aug 2022 03:12

Instrument : MSVOA_U
 ClientSampleId : VSTD050183

Tgt Ion: 56 Resp: 169634

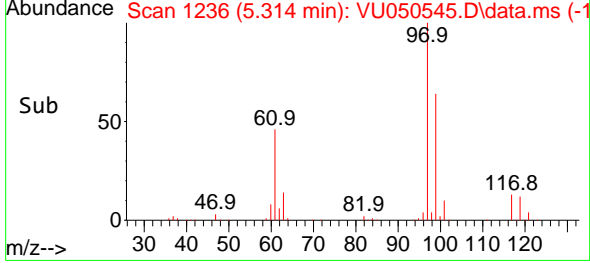
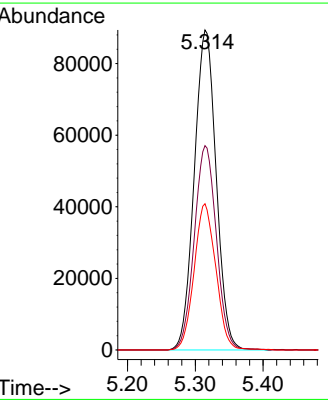
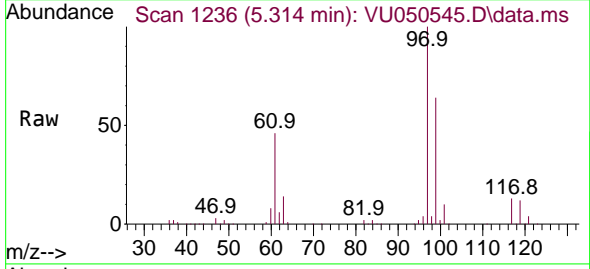
Ion	Ratio	Lower	Upper
56	100		
69	30.8	24.8	37.2
84	87.4	68.9	103.3

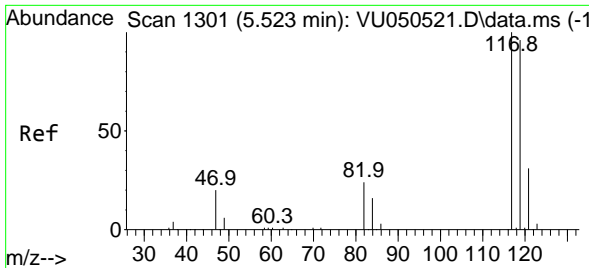


#30
 1,1,1-Trichloroethane
 Concen: 47.404 ug/L
 RT: 5.314 min Scan# 1236
 Delta R.T. 0.000 min
 Lab File: VU050545.D
 Acq: 31 Aug 2022 03:12

Tgt Ion: 97 Resp: 200589

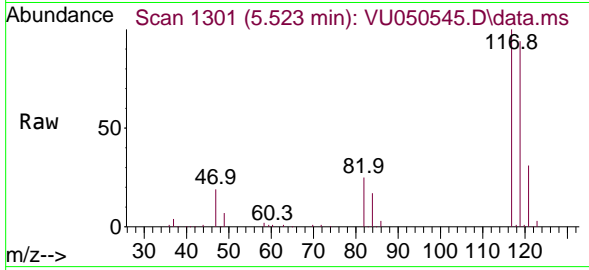
Ion	Ratio	Lower	Upper
97	100		
99	64.6	51.5	77.3
61	45.3	36.4	54.6



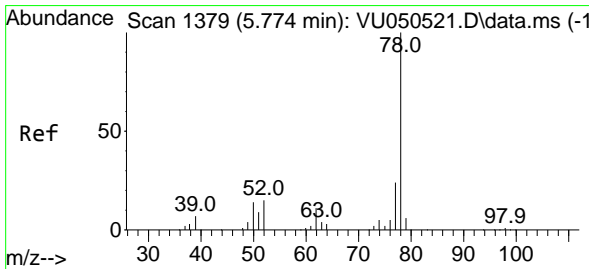
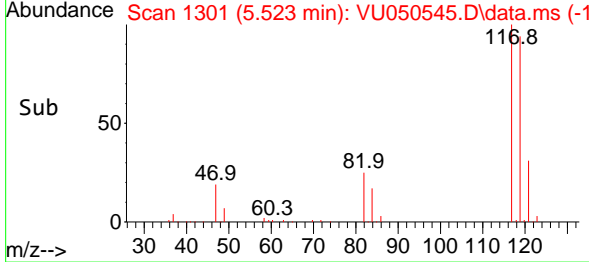
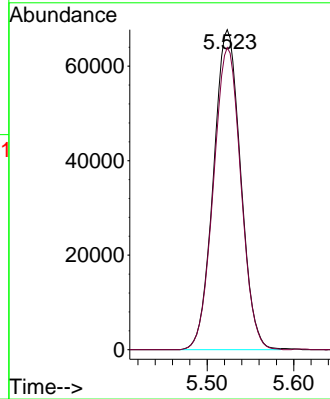


#31
 Carbon tetrachloride
 Concen: 45.684 ug/L
 RT: 5.523 min Scan# 117
 Delta R.T. 0.000 min
 Lab File: VU050545.D
 Acq: 31 Aug 2022 03:12

Instrument : MSVOA_U
 ClientSampleId : VSTD050183

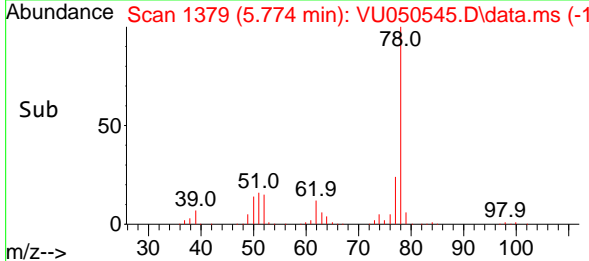
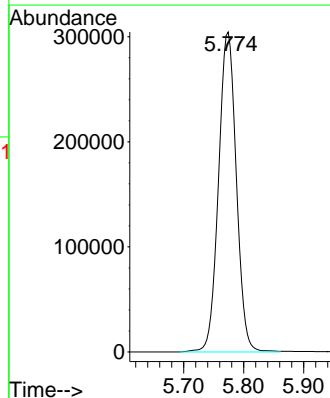
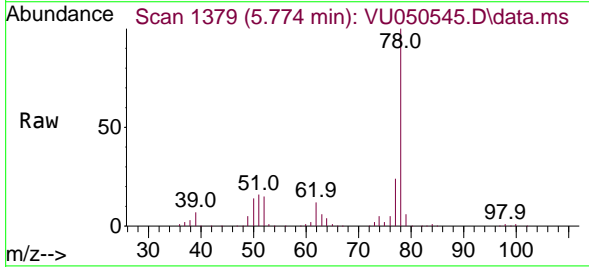


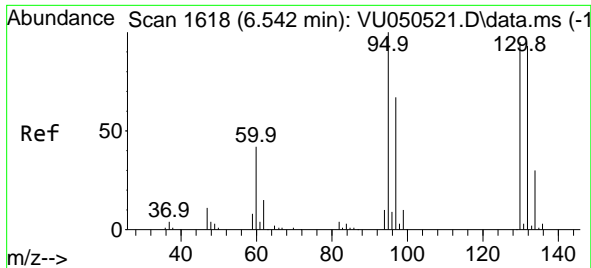
Tgt Ion: 117 Resp: 147596
 Ion Ratio Lower Upper
 117 100
 119 95.2 78.8 118.2



#33
 Benzene
 Concen: 49.289 ug/L
 RT: 5.774 min Scan# 1379
 Delta R.T. 0.000 min
 Lab File: VU050545.D
 Acq: 31 Aug 2022 03:12

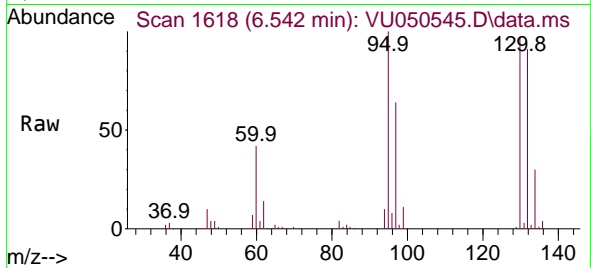
Tgt Ion: 78 Resp: 625360



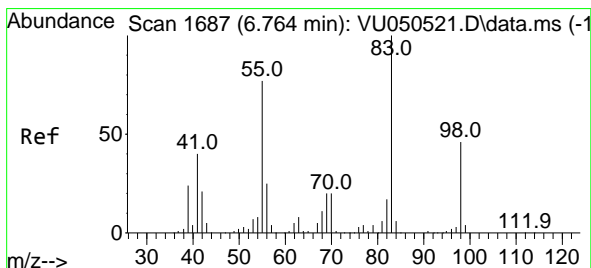
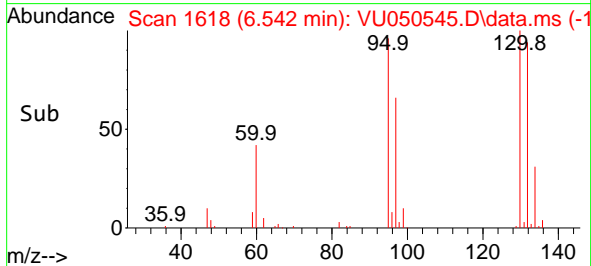
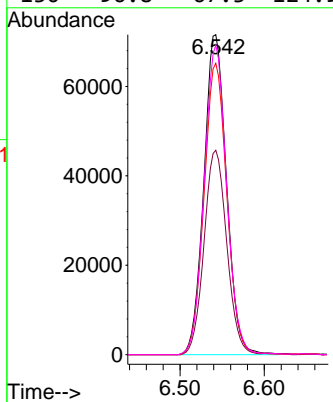


#34
 Trichloroethene
 Concen: 45.954 ug/L
 RT: 6.542 min Scan# 1618
 Delta R.T. 0.000 min
 Lab File: VU050545.D
 Acq: 31 Aug 2022 03:12

Instrument : MSVOA_U
 ClientSampleId : VSTD050183

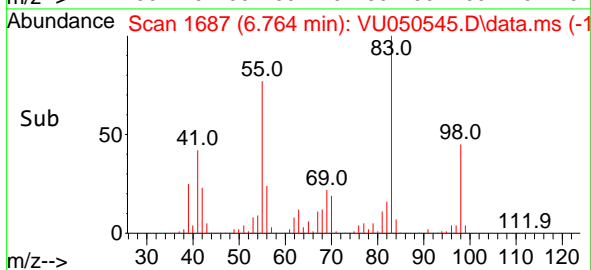
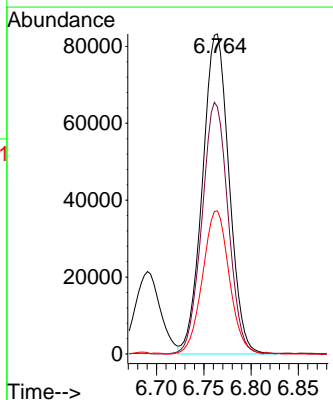
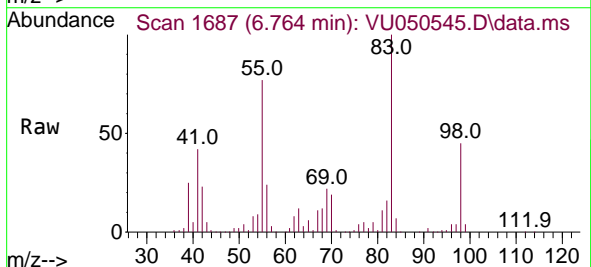


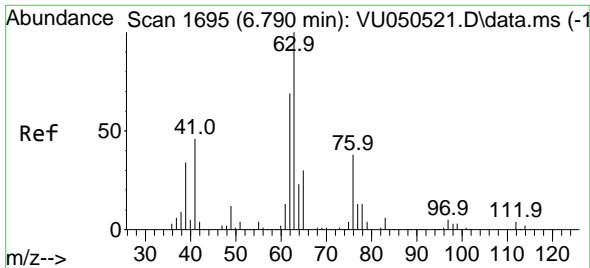
Tgt Ion: 95 Resp: 133793
 Ion Ratio Lower Upper
 95 100
 97 63.9 44.2 82.2
 132 91.0 63.2 117.4
 130 96.8 67.3 124.9



#35
 Methylcyclohexane
 Concen: 41.692 ug/L
 RT: 6.764 min Scan# 1687
 Delta R.T. 0.000 min
 Lab File: VU050545.D
 Acq: 31 Aug 2022 03:12

Tgt Ion: 83 Resp: 163207
 Ion Ratio Lower Upper
 83 100
 55 77.3 61.0 91.4
 98 44.8 35.7 53.5

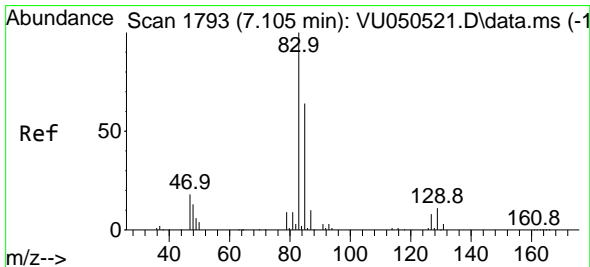
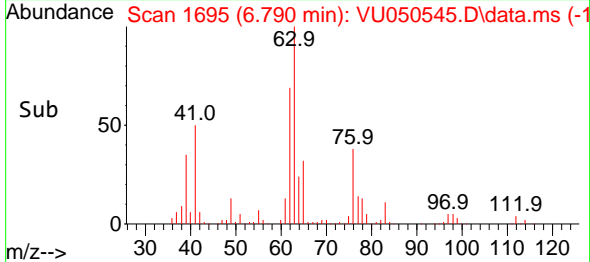
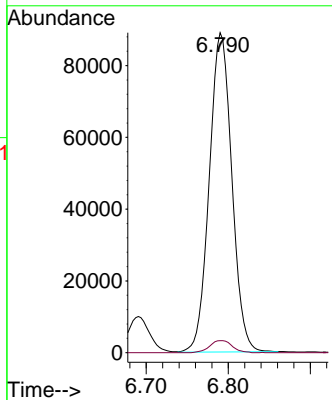
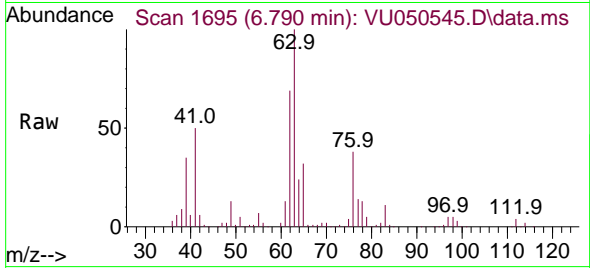




#37
 1,2-Dichloropropane
 Concen: 49.016 ug/L
 RT: 6.790 min Scan# 1695
 Delta R.T. 0.000 min
 Lab File: VU050545.D
 Acq: 31 Aug 2022 03:12

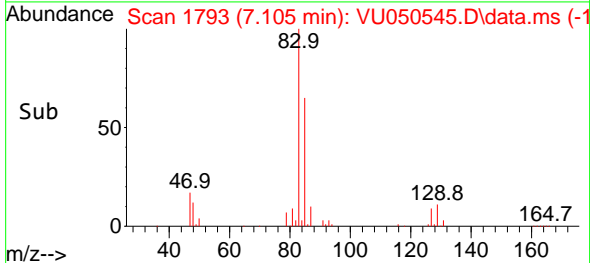
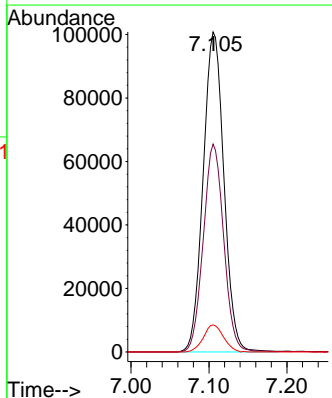
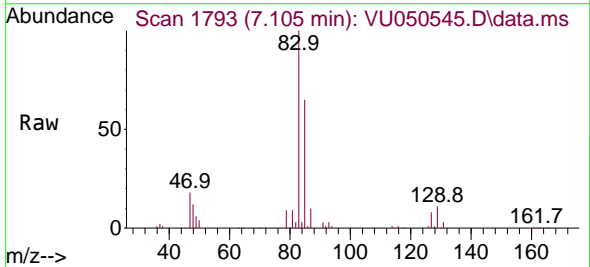
Instrument : MSVOA_U
 ClientSampleId : VSTD050183

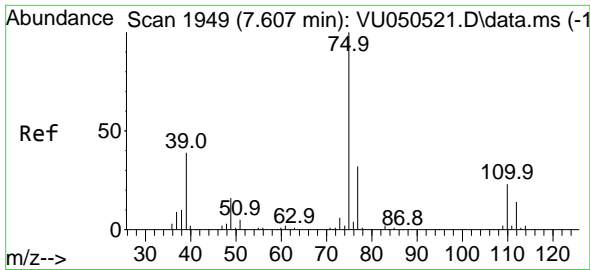
Tgt Ion: 63 Resp: 170268
 Ion Ratio Lower Upper
 63 100
 112 3.8 3.0 4.4



#38
 Bromodichloromethane
 Concen: 47.502 ug/L
 RT: 7.105 min Scan# 1793
 Delta R.T. 0.000 min
 Lab File: VU050545.D
 Acq: 31 Aug 2022 03:12

Tgt Ion: 83 Resp: 186699
 Ion Ratio Lower Upper
 83 100
 85 65.0 44.4 82.4
 127 8.4 6.3 9.5

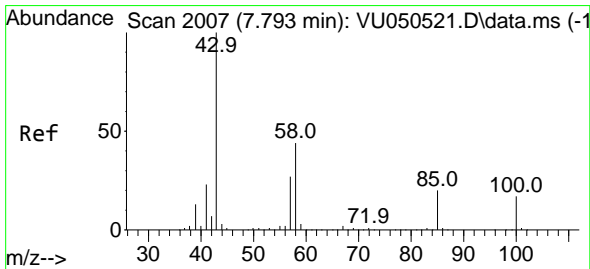
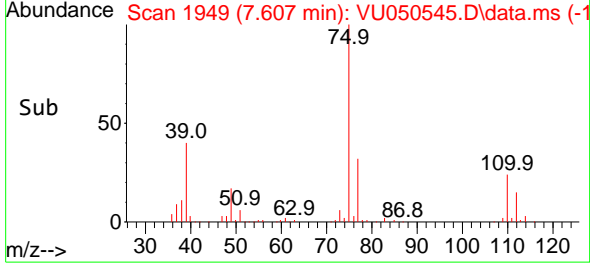
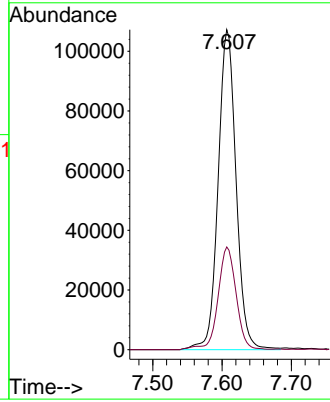
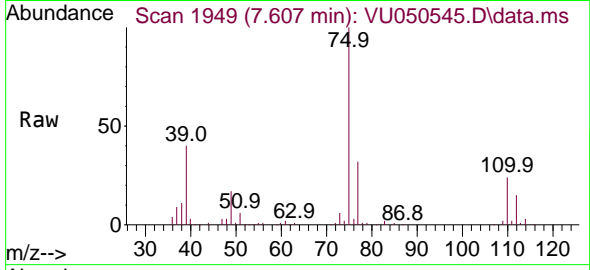




#39
 cis-1,3-Dichloropropene
 Concen: 42.256 ug/L
 RT: 7.607 min Scan# 1949
 Delta R.T. 0.000 min
 Lab File: VU050545.D
 Acq: 31 Aug 2022 03:12

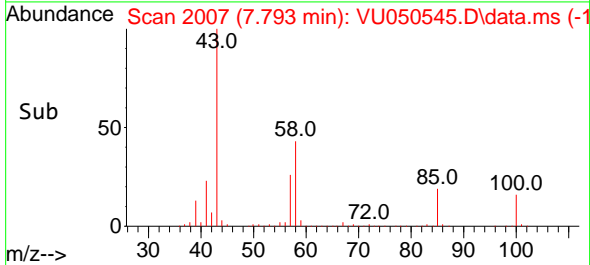
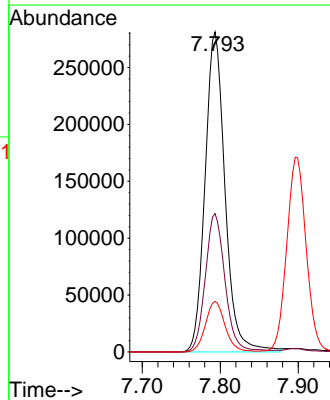
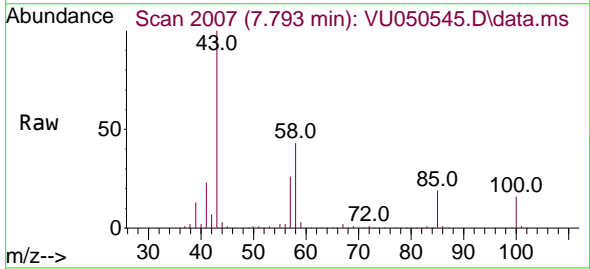
Instrument :
 MSVOA_U
 ClientSampleId :
 VSTD050183

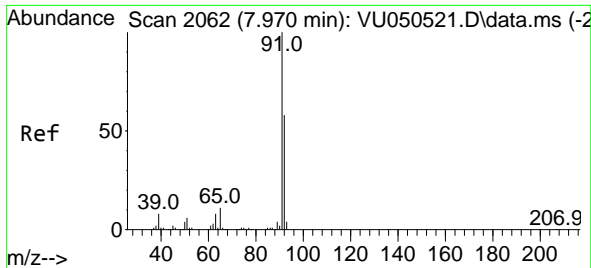
Tgt Ion: 75 Resp: 193400
 Ion Ratio Lower Upper
 75 100
 77 32.1 22.1 41.1



#40
 4-Methyl-2-pentanone
 Concen: 99.547 ug/L
 RT: 7.793 min Scan# 2007
 Delta R.T. 0.000 min
 Lab File: VU050545.D
 Acq: 31 Aug 2022 03:12

Tgt Ion: 43 Resp: 500550
 Ion Ratio Lower Upper
 43 100
 58 42.8 34.2 51.4
 100 15.5 12.9 19.3

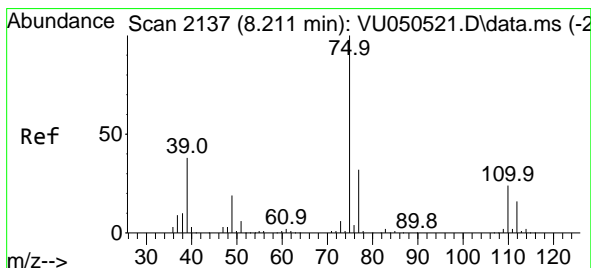
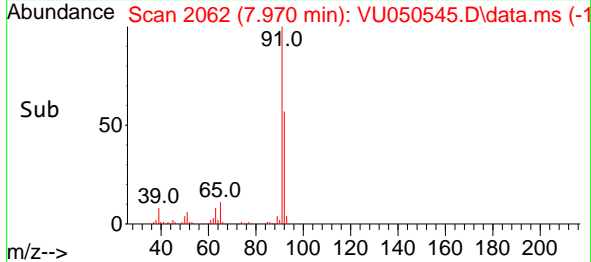
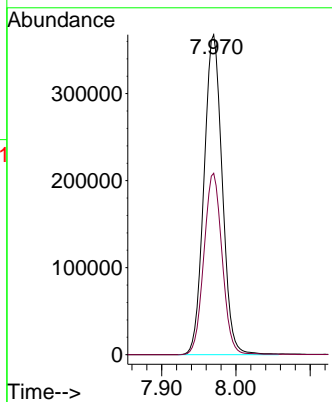
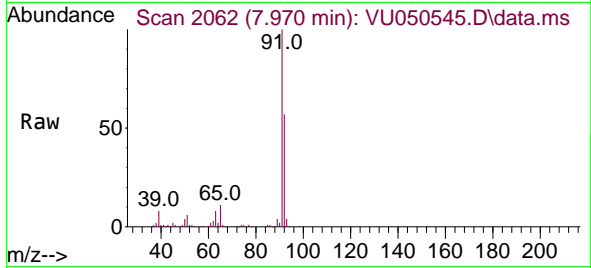




#42
 Toluene
 Concen: 49.861 ug/L
 RT: 7.970 min Scan# 2062
 Delta R.T. 0.000 min
 Lab File: VU050545.D
 Acq: 31 Aug 2022 03:12

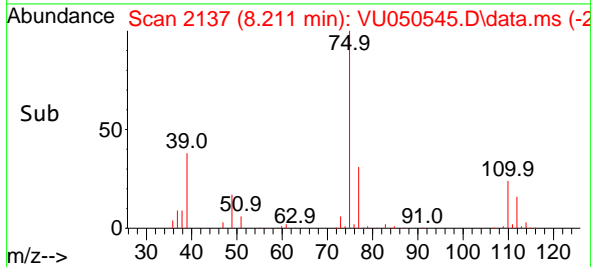
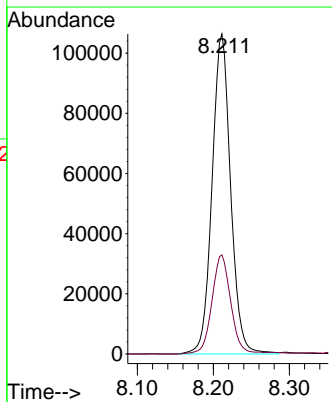
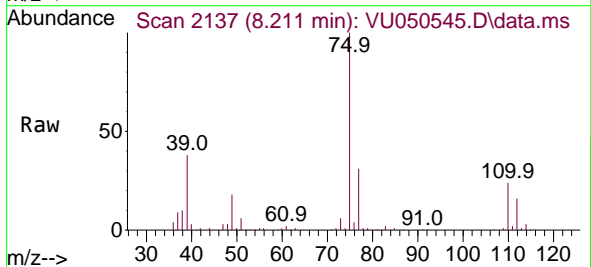
Instrument : MSVOA_U
 ClientSampleId : VSTD050183

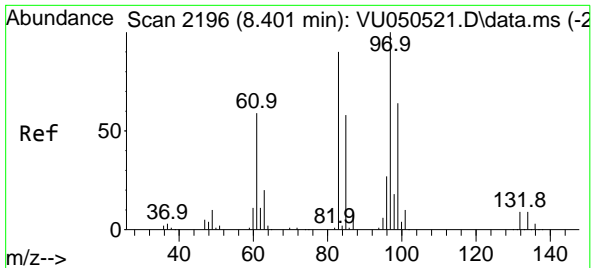
Tgt Ion: 91 Resp: 627623
 Ion Ratio Lower Upper
 91 100
 92 56.7 39.8 73.8



#44
 trans-1,3-Dichloropropene
 Concen: 43.234 ug/L
 RT: 8.211 min Scan# 2137
 Delta R.T. 0.000 min
 Lab File: VU050545.D
 Acq: 31 Aug 2022 03:12

Tgt Ion: 75 Resp: 180264
 Ion Ratio Lower Upper
 75 100
 77 30.9 22.2 41.2





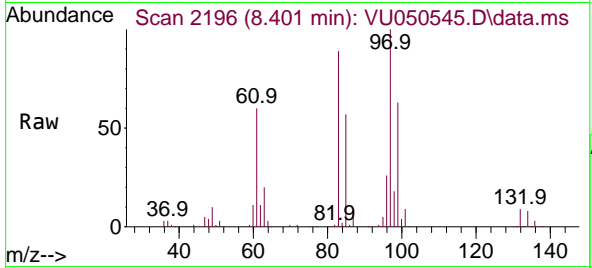
#45
 1,1,2-Trichloroethane
 Concen: 49.179 ug/L
 RT: 8.401 min Scan# 2196
 Delta R.T. 0.000 min
 Lab File: VU050545.D
 Acq: 31 Aug 2022 03:12

Instrument :

MSVOA_U

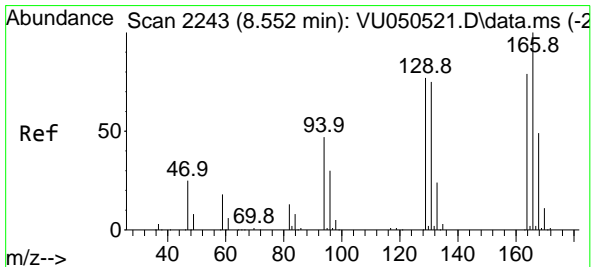
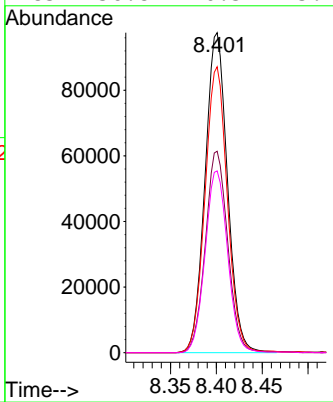
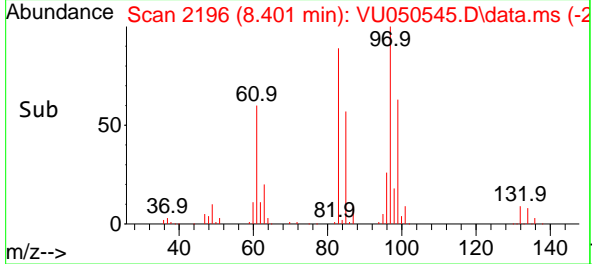
ClientSampleId :

VSTD050183

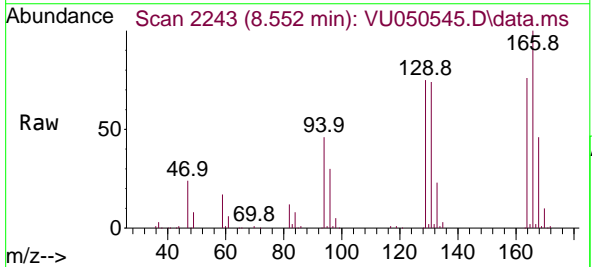


Tgt Ion: 97 Resp: 165820

Ion	Ratio	Lower	Upper
97	100		
99	63.0	44.3	82.3
83	89.3	62.1	115.3
85	56.8	40.5	75.1

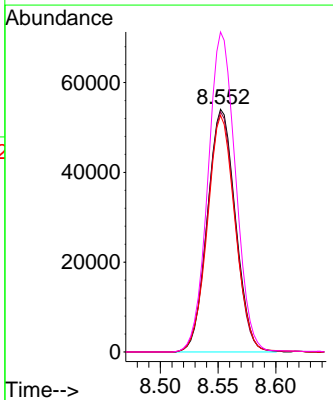
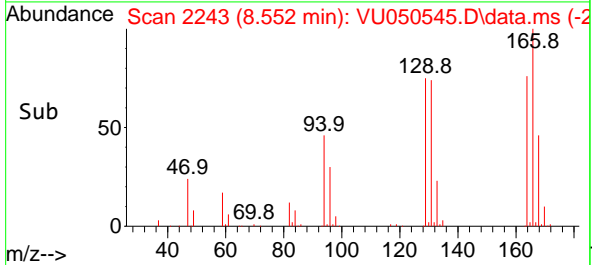


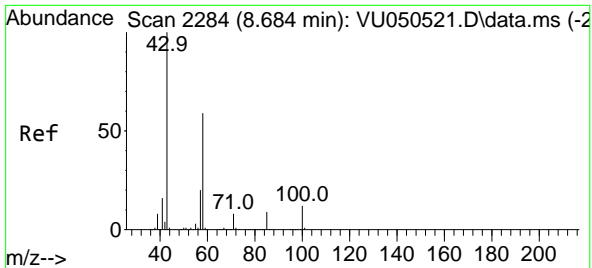
#46
 Tetrachloroethene
 Concen: 44.934 ug/L
 RT: 8.552 min Scan# 2243
 Delta R.T. 0.000 min
 Lab File: VU050545.D
 Acq: 31 Aug 2022 03:12



Tgt Ion: 164 Resp: 91513

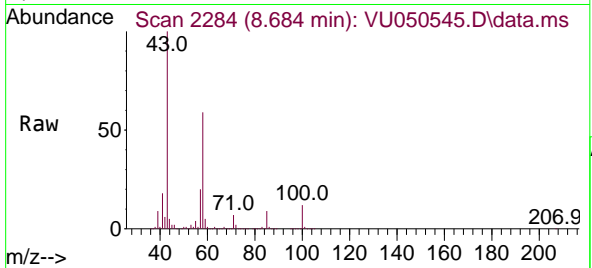
Ion	Ratio	Lower	Upper
164	100		
129	98.9	67.5	125.3
131	97.5	63.8	118.4
166	131.8	87.2	161.9





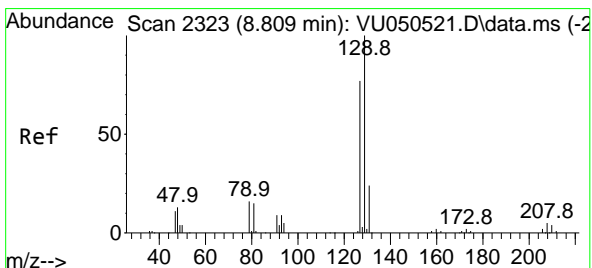
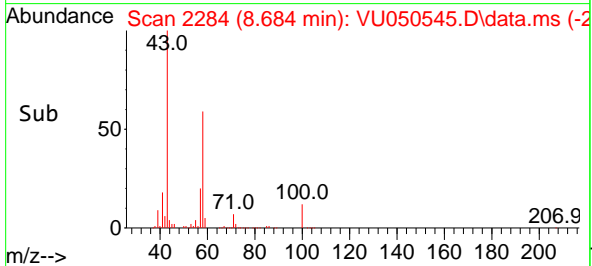
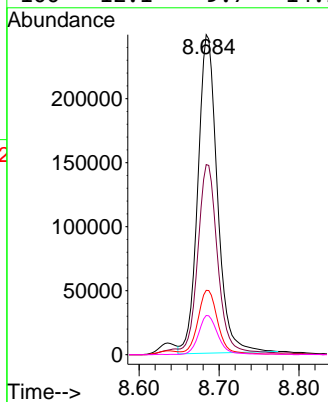
#48
 2-Hexanone
 Concen: 98.230 ug/L
 RT: 8.684 min Scan# 21
 Delta R.T. 0.000 min
 Lab File: VU050545.D
 Acq: 31 Aug 2022 03:12

Instrument :
 MSVOA_U
 ClientSampleId :
 VSTD050183



Tgt Ion: 43 Resp: 422240

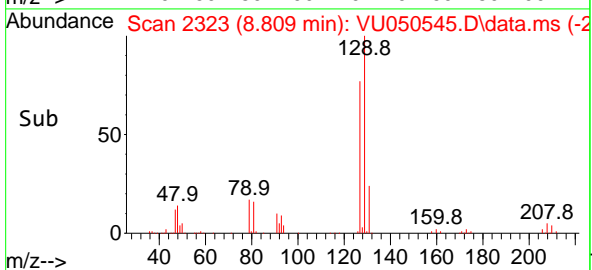
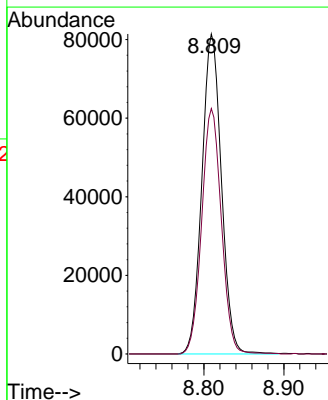
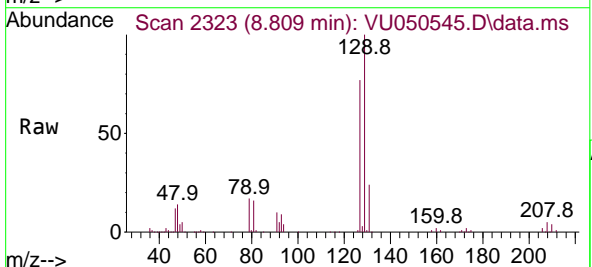
Ion	Ratio	Lower	Upper
43	100		
58	60.4	46.6	69.8
57	20.6	15.8	23.6
100	12.1	9.7	14.5

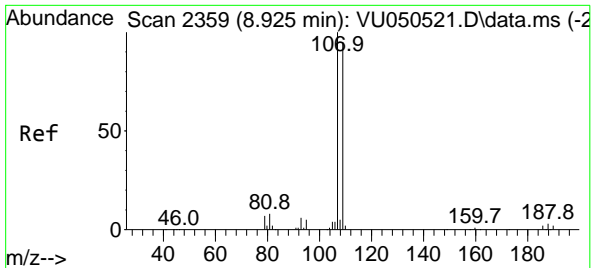


#49
 Dibromochloromethane
 Concen: 47.315 ug/L
 RT: 8.809 min Scan# 2323
 Delta R.T. 0.000 min
 Lab File: VU050545.D
 Acq: 31 Aug 2022 03:12

Tgt Ion: 129 Resp: 138510

Ion	Ratio	Lower	Upper
129	100		
127	76.7	54.9	101.9

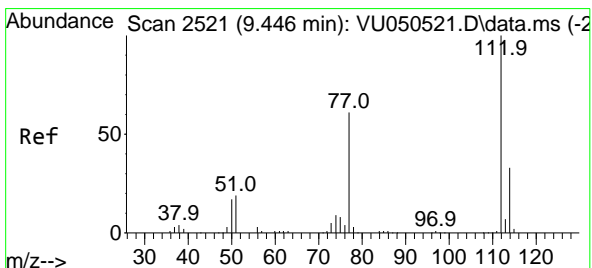
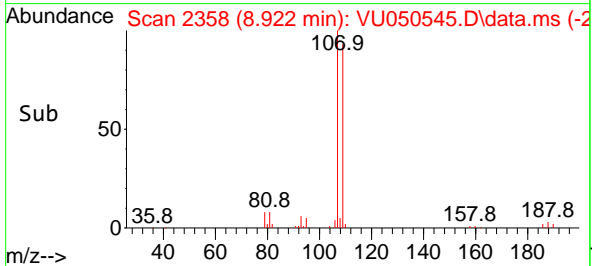
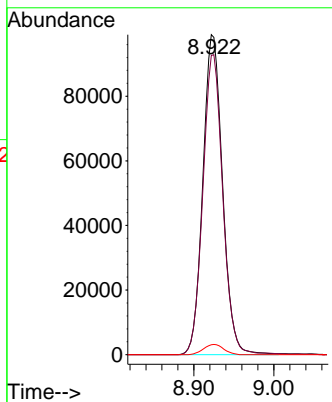
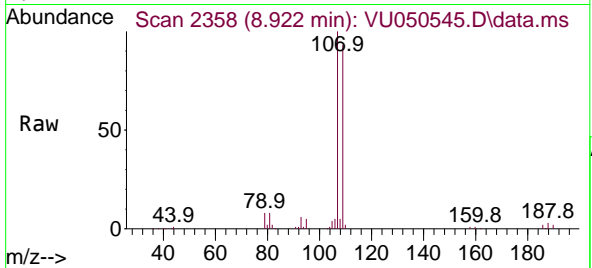




#50
 1,2-Dibromoethane
 Concen: 48.764 ug/L
 RT: 8.922 min Scan# 21
 Delta R.T. -0.003 min
 Lab File: VU050545.D
 Acq: 31 Aug 2022 03:12

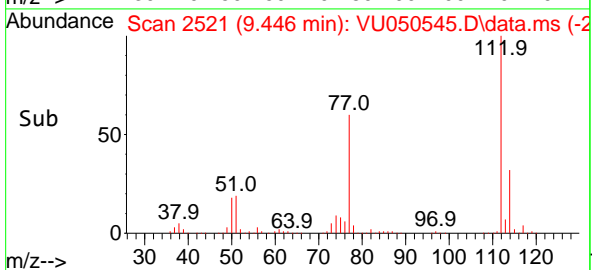
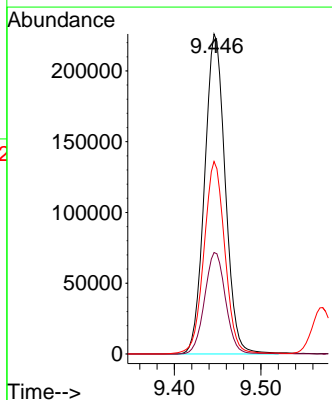
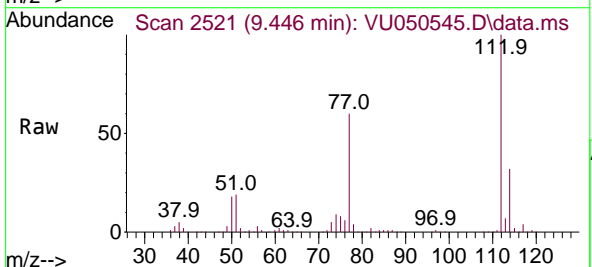
Instrument : MSVOA_U
 ClientSampleId : VSTD050183

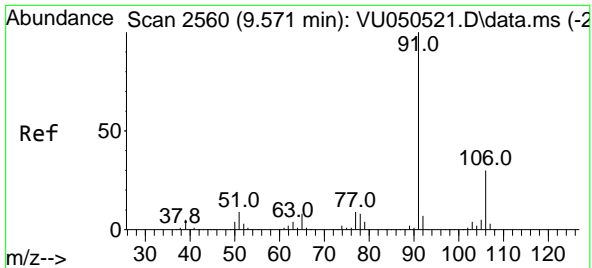
Tgt Ion:107 Resp: 169723
 Ion Ratio Lower Upper
 107 100
 109 93.5 65.2 121.0
 188 3.1 2.7 4.1



#51
 Chlorobenzene
 Concen: 47.876 ug/L
 RT: 9.446 min Scan# 2521
 Delta R.T. 0.000 min
 Lab File: VU050545.D
 Acq: 31 Aug 2022 03:12

Tgt Ion:112 Resp: 375038
 Ion Ratio Lower Upper
 112 100
 114 31.7 23.0 42.6
 77 60.1 49.4 74.2

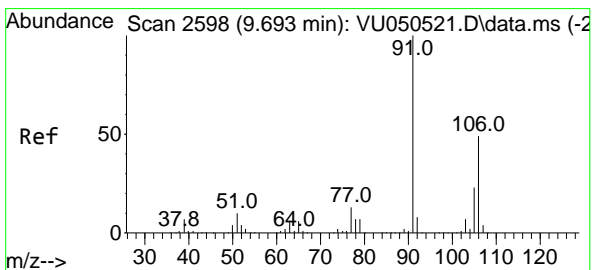
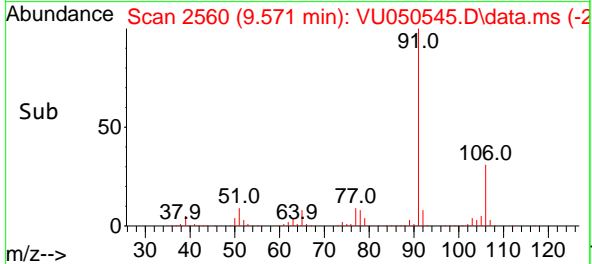
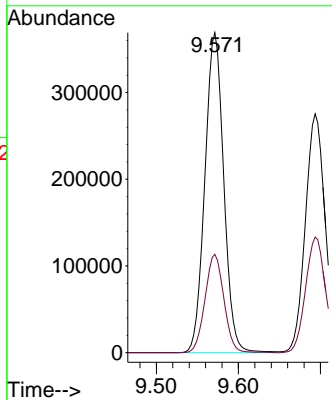
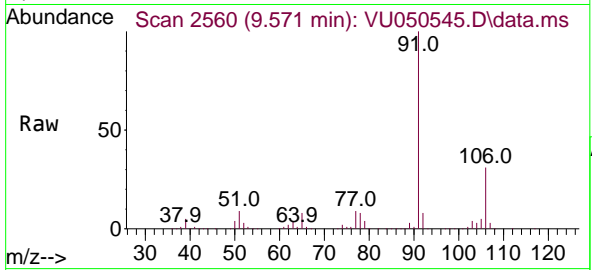




#52
 Ethylbenzene
 Concen: 48.346 ug/L
 RT: 9.571 min Scan# 21
 Delta R.T. 0.000 min
 Lab File: VU050545.D
 Acq: 31 Aug 2022 03:12

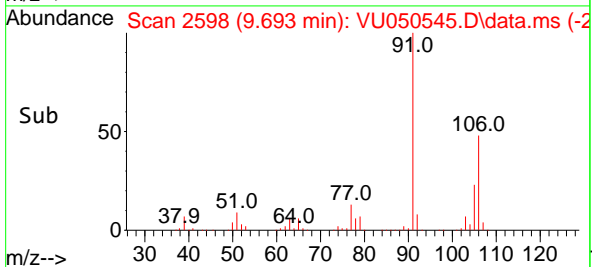
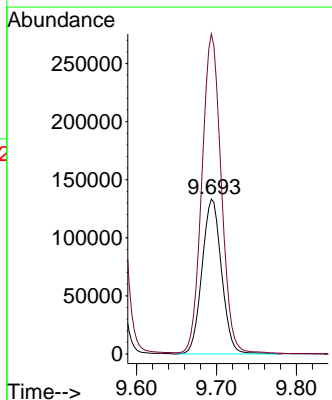
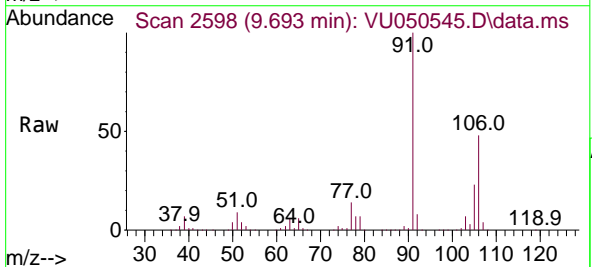
Instrument :
 MSVOA_U
 ClientSampleId :
 VSTD050183

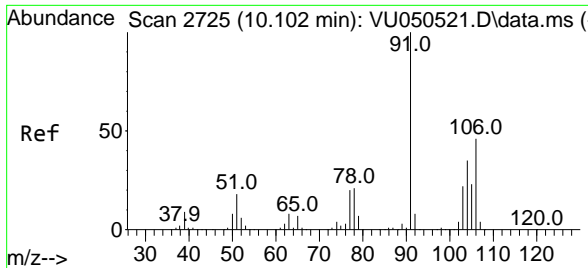
Tgt Ion: 91 Resp: 589035
 Ion Ratio Lower Upper
 91 100
 106 30.8 21.5 39.9



#53
 m,p-Xylene
 Concen: 49.328 ug/L
 RT: 9.693 min Scan# 2598
 Delta R.T. 0.000 min
 Lab File: VU050545.D
 Acq: 31 Aug 2022 03:12

Tgt Ion: 106 Resp: 226429
 Ion Ratio Lower Upper
 106 100
 91 206.5 145.1 269.5

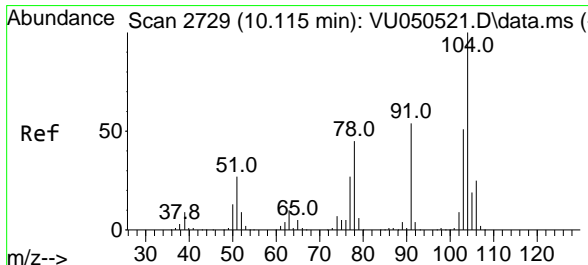
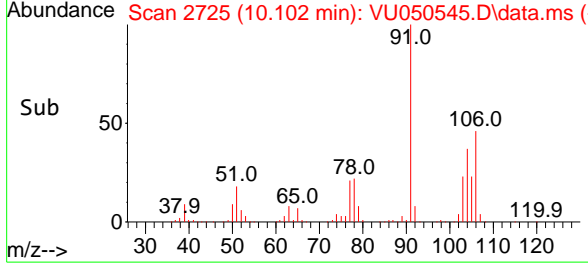
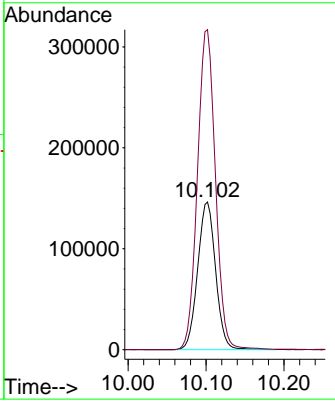
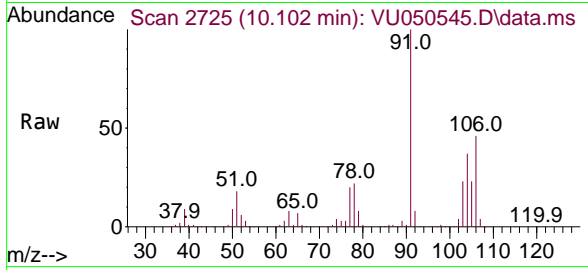




#54
 o-Xylene
 Concen: 50.167 ug/L
 RT: 10.102 min Scan# 2725
 Delta R.T. 0.000 min
 Lab File: VU050545.D
 Acq: 31 Aug 2022 03:12

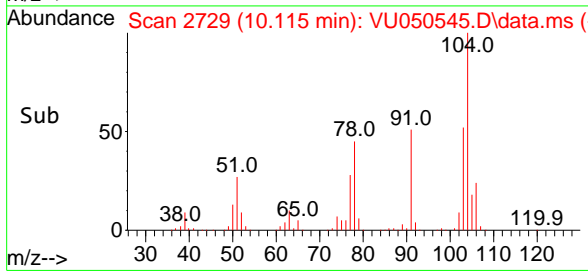
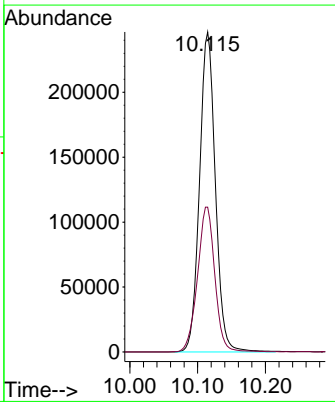
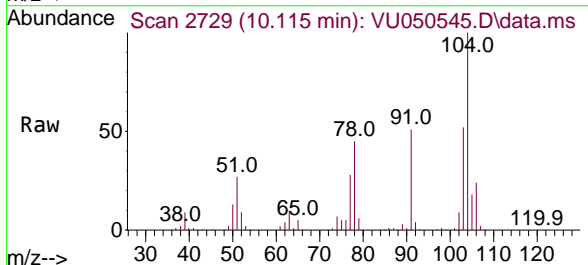
Instrument : MSVOA_U
 ClientSampleId : VSTD050183

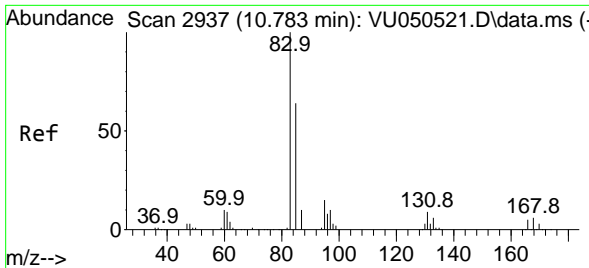
Tgt Ion:106 Resp: 234259
 Ion Ratio Lower Upper
 106 100
 91 216.7 152.0 282.2



#55
 Styrene
 Concen: 51.545 ug/L
 RT: 10.115 min Scan# 2729
 Delta R.T. 0.000 min
 Lab File: VU050545.D
 Acq: 31 Aug 2022 03:12

Tgt Ion:104 Resp: 399413
 Ion Ratio Lower Upper
 104 100
 78 45.3 32.0 59.4



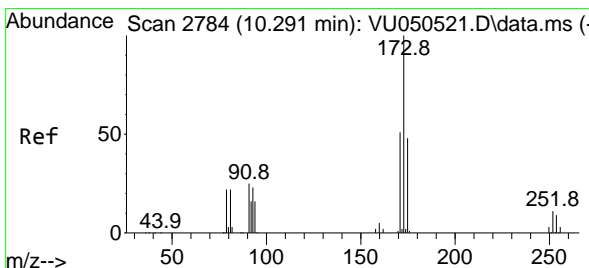
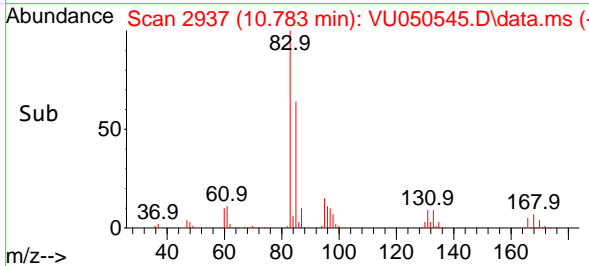
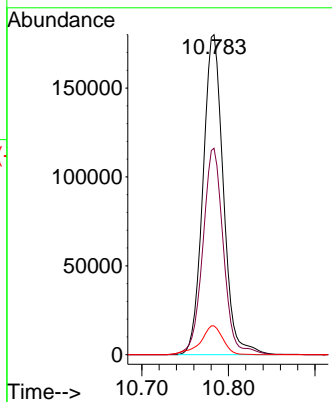
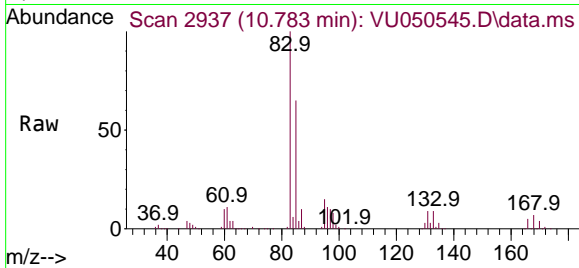


#57
 1,1,2-Tetrachloroethane
 Concen: 48.895 ug/L
 RT: 10.783 min Scan# 2937
 Delta R.T. 0.000 min
 Lab File: VU050545.D
 Acq: 31 Aug 2022 03:12

Instrument : MSVOA_U
 ClientSampleId : VSTD050183

Tgt Ion: 83 Resp: 294148

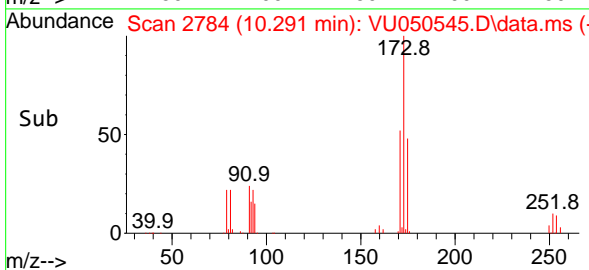
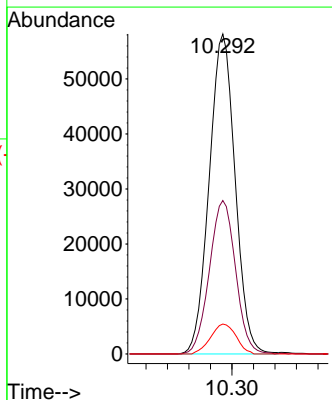
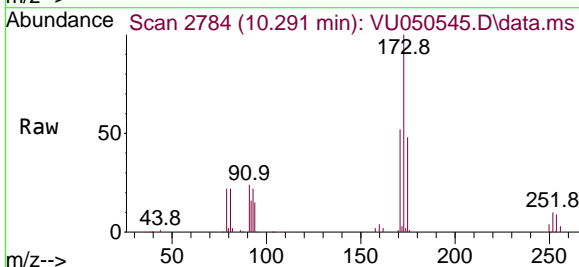
Ion	Ratio	Lower	Upper
83	100		
85	64.5	45.3	84.1
131	9.0	7.2	10.8

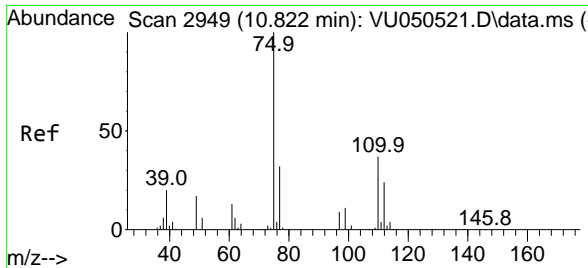


#59
 Bromoform
 Concen: 45.782 ug/L
 RT: 10.291 min Scan# 2784
 Delta R.T. 0.000 min
 Lab File: VU050545.D
 Acq: 31 Aug 2022 03:12

Tgt Ion: 173 Resp: 97252

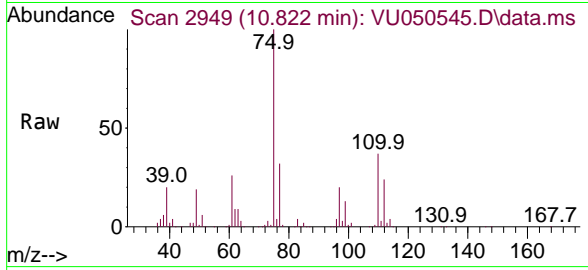
Ion	Ratio	Lower	Upper
173	100		
175	48.4	37.8	56.8
254	9.2	7.7	11.5





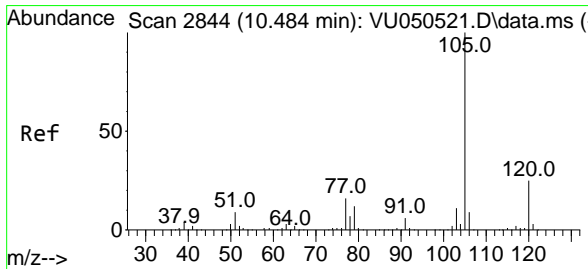
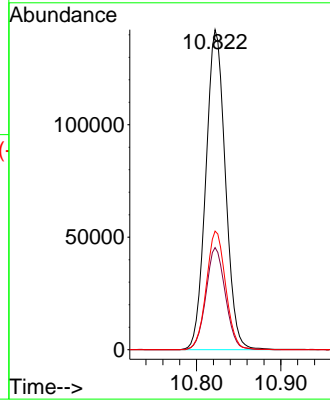
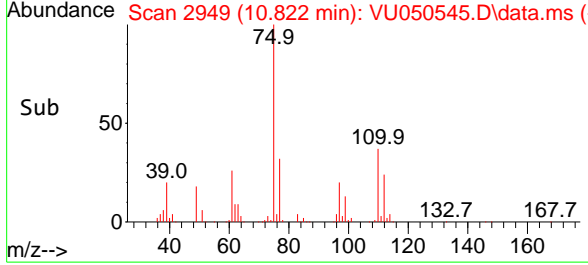
#60
 1,2,3-Trichloropropane
 Concen: 48.267 ug/L
 RT: 10.822 min Scan# 2949
 Delta R.T. 0.000 min
 Lab File: VU050545.D
 Acq: 31 Aug 2022 03:12

Instrument : MSVOA_U
 ClientSampleId : VSTD050183

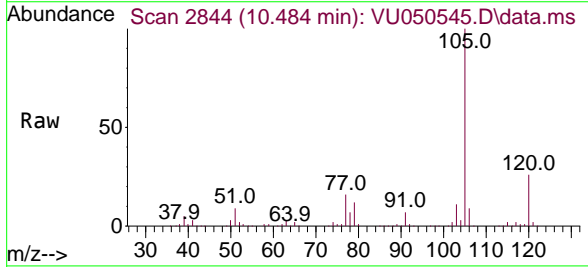


Tgt Ion: 75 Resp: 229868

Ion	Ratio	Lower	Upper
75	100		
77	31.8	26.2	39.4
110	36.6	29.0	43.6

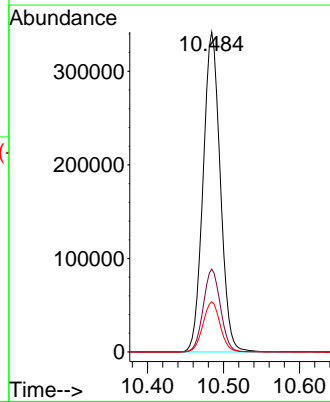
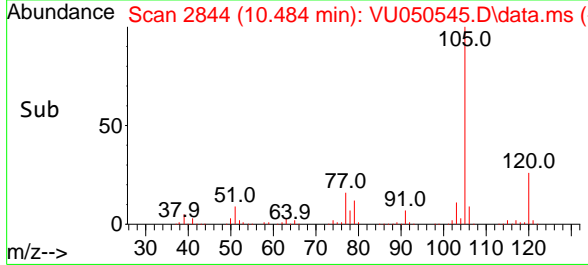


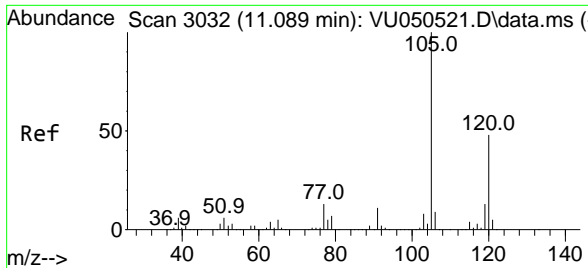
#61
 Isopropylbenzene
 Concen: 47.413 ug/L
 RT: 10.484 min Scan# 2844
 Delta R.T. 0.000 min
 Lab File: VU050545.D
 Acq: 31 Aug 2022 03:12



Tgt Ion: 105 Resp: 536361

Ion	Ratio	Lower	Upper
105	100		
120	25.9	20.6	31.0
77	15.8	12.6	19.0

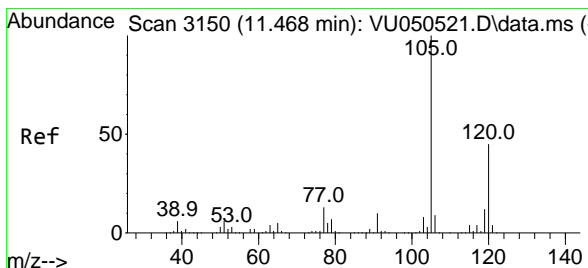
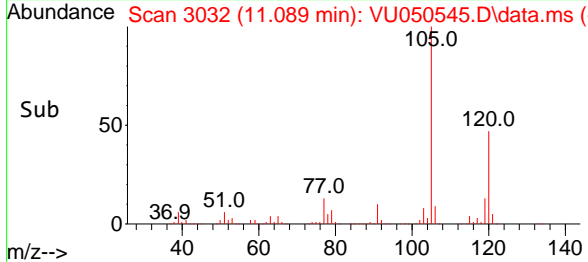
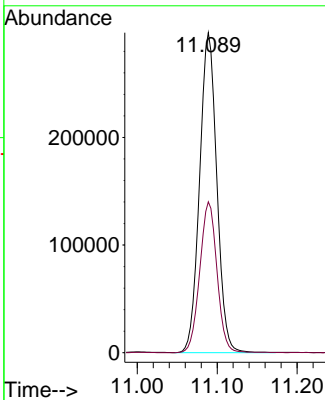
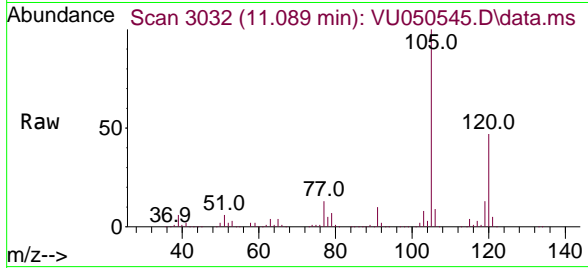




#62
 1,3,5-Trimethylbenzene
 Concen: 47.968 ug/L
 RT: 11.089 min Scan# 3032
 Delta R.T. 0.000 min
 Lab File: VU050545.D
 Acq: 31 Aug 2022 03:12

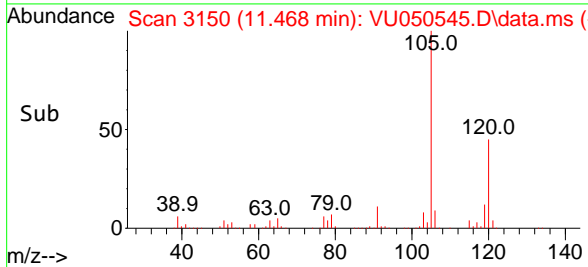
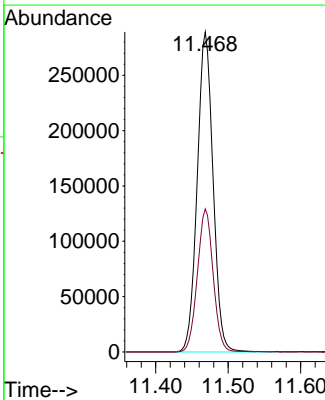
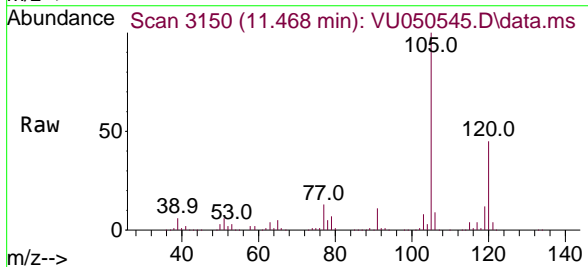
Instrument : MSVOA_U
 ClientSampleId : VSTD050183

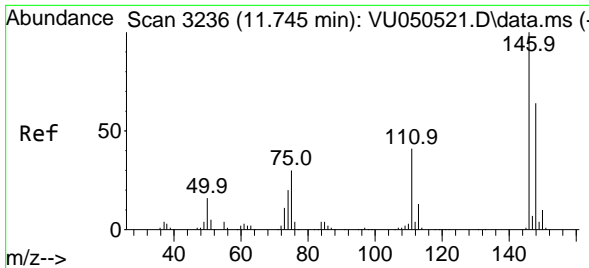
Tgt Ion:105 Resp: 446091
 Ion Ratio Lower Upper
 105 100
 120 47.1 38.2 57.2



#63
 1,2,4-Trimethylbenzene
 Concen: 48.524 ug/L
 RT: 11.468 min Scan# 3150
 Delta R.T. 0.000 min
 Lab File: VU050545.D
 Acq: 31 Aug 2022 03:12

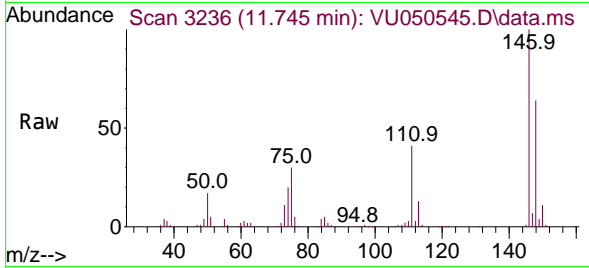
Tgt Ion:105 Resp: 438313
 Ion Ratio Lower Upper
 105 100
 120 44.6 35.6 53.4



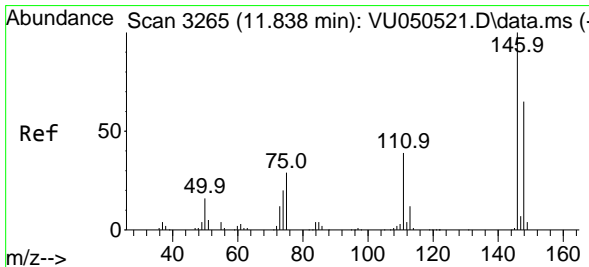
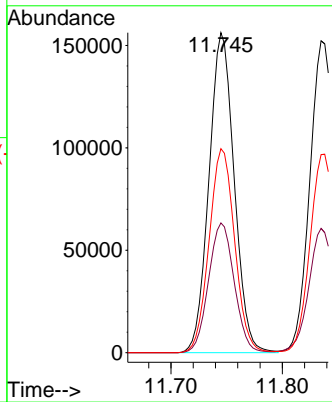
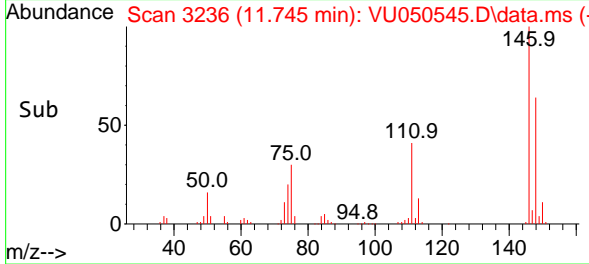


#64
 1,3-Dichlorobenzene
 Concen: 45.522 ug/L
 RT: 11.745 min Scan# 31
 Delta R.T. 0.000 min
 Lab File: VU050545.D
 Acq: 31 Aug 2022 03:12

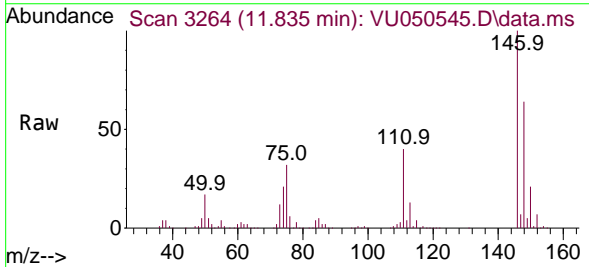
Instrument :
 MSVOA_U
 ClientSampleId :
 VSTD050183



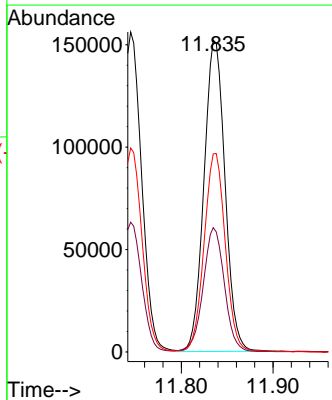
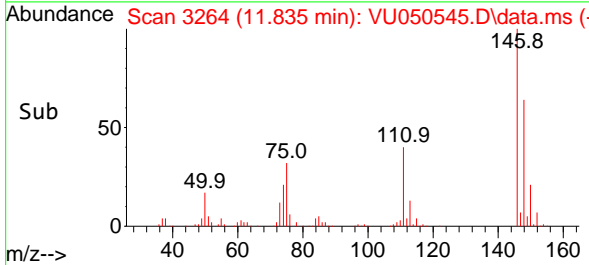
Tgt Ion:146 Resp: 245723
 Ion Ratio Lower Upper
 146 100
 111 40.6 28.4 52.8
 148 63.7 45.0 83.6

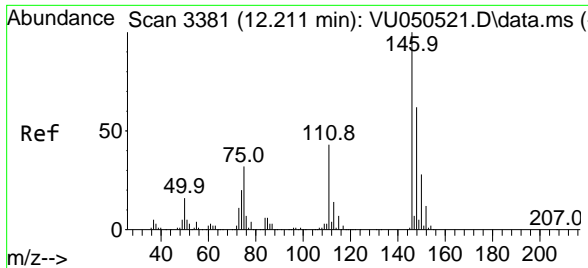


#65
 1,4-Dichlorobenzene
 Concen: 44.270 ug/L
 RT: 11.835 min Scan# 3264
 Delta R.T. -0.003 min
 Lab File: VU050545.D
 Acq: 31 Aug 2022 03:12



Tgt Ion:146 Resp: 242318
 Ion Ratio Lower Upper
 146 100
 111 39.9 28.2 52.4
 148 63.5 45.0 83.6

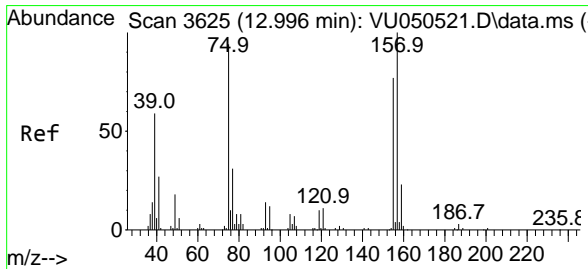
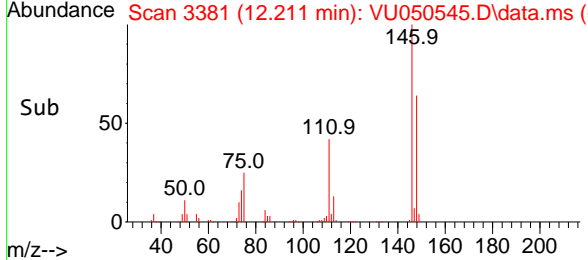
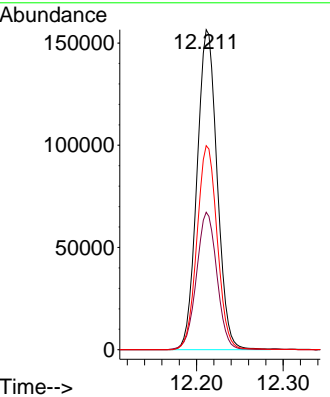
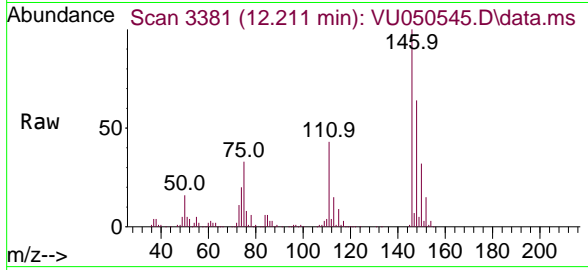




#67
 1,2-Dichlorobenzene
 Concen: 43.208 ug/L
 RT: 12.211 min Scan# 3111
 Delta R.T. 0.000 min
 Lab File: VU050545.D
 Acq: 31 Aug 2022 03:12

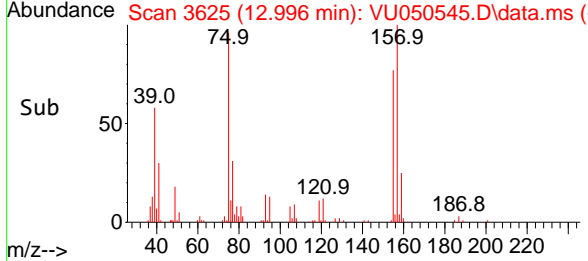
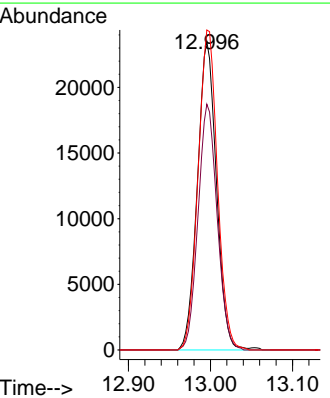
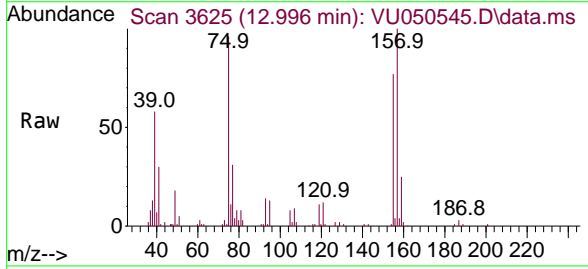
Instrument : MSVOA_U
 ClientSampleId : VSTD050183

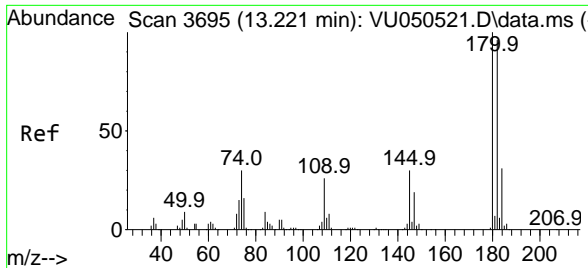
Tgt Ion	Resp	Lower	Upper
146	252844		
111	43.0	33.4	50.2
148	63.8	49.9	74.9



#68
 1,2-Dibromo-3-chloropropane
 Concen: 33.365 ug/L
 RT: 12.996 min Scan# 3625
 Delta R.T. 0.000 min
 Lab File: VU050545.D
 Acq: 31 Aug 2022 03:12

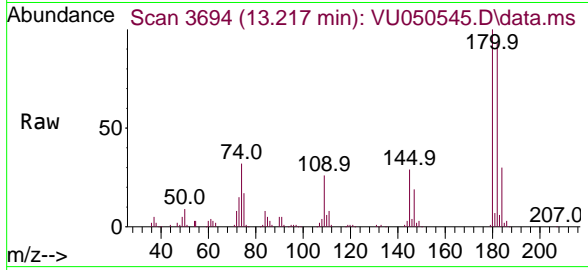
Tgt Ion	Resp	Lower	Upper
75	37918		
155	84.0	71.4	107.2
157	103.7	83.2	124.8



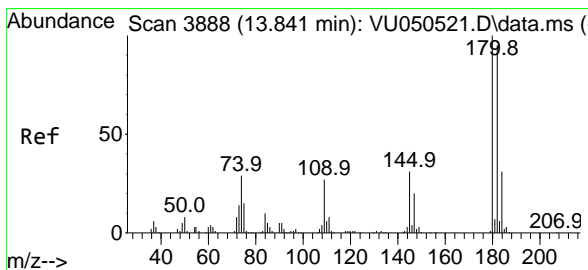
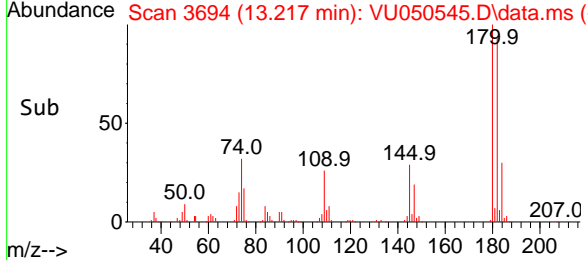
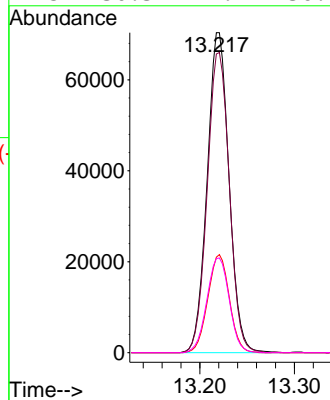


#69
 1,3,5-Trichlorobenzene
 Concen: 30.633 ug/L
 RT: 13.217 min Scan# 3694
 Delta R.T. -0.003 min
 Lab File: VU050545.D
 Acq: 31 Aug 2022 03:12

Instrument :
 MSVOA_U
 ClientSampleId :
 VSTD050183

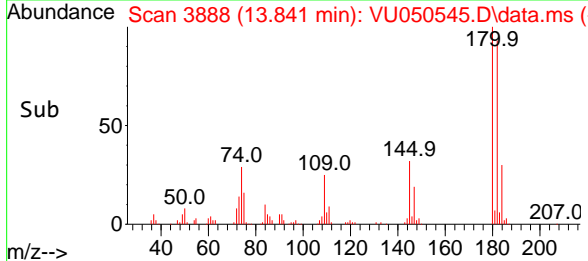
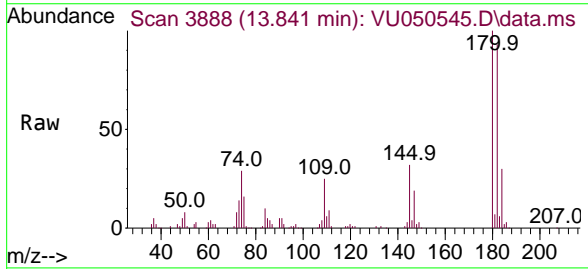
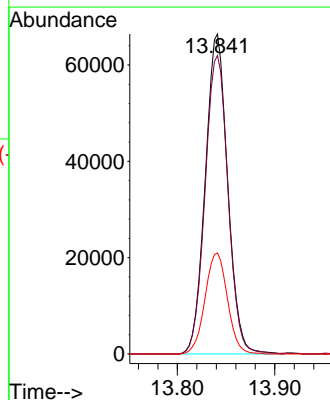


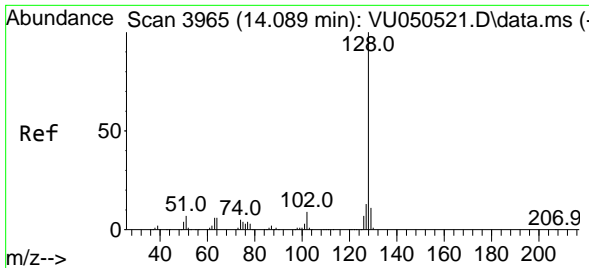
Tgt Ion:180 Resp: 113153
 Ion Ratio Lower Upper
 180 100
 182 94.7 76.3 114.5
 184 30.2 24.4 36.6
 145 30.3 24.2 36.4



#70
 1,2,4-trichlorobenzene
 Concen: 32.356 ug/L
 RT: 13.841 min Scan# 3888
 Delta R.T. 0.000 min
 Lab File: VU050545.D
 Acq: 31 Aug 2022 03:12

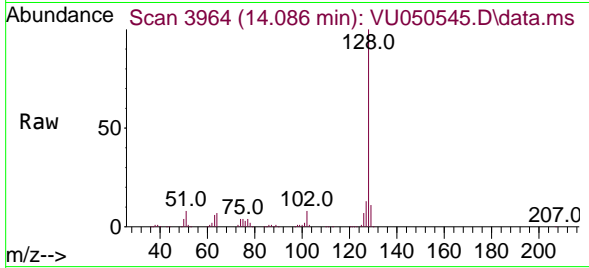
Tgt Ion:180 Resp: 106304
 Ion Ratio Lower Upper
 180 100
 182 95.4 76.6 115.0
 145 31.5 24.2 36.4



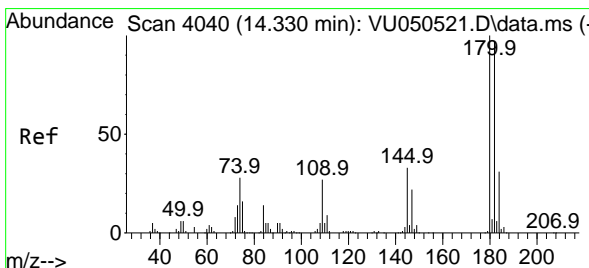
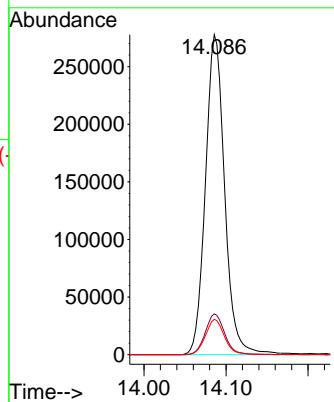
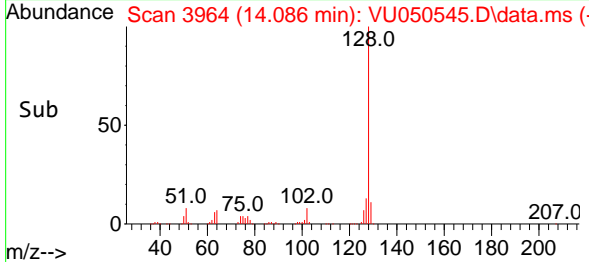


#71
 Naphthalene
 Concen: 33.476 ug/L
 RT: 14.086 min Scan# 3965
 Delta R.T. -0.003 min
 Lab File: VU050545.D
 Acq: 31 Aug 2022 03:12

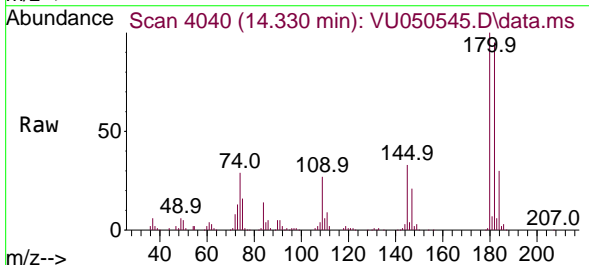
Instrument : MSVOA_U
 ClientSampleId : VSTD050183



Tgt Ion:128 Resp: 451254
 Ion Ratio Lower Upper
 128 100
 127 12.9 10.4 15.6
 129 11.0 8.6 13.0



#72
 1,2,3-Trichlorobenzene
 Concen: 40.703 ug/L
 RT: 14.330 min Scan# 4040
 Delta R.T. 0.000 min
 Lab File: VU050545.D
 Acq: 31 Aug 2022 03:12



Tgt Ion:180 Resp: 154551
 Ion Ratio Lower Upper
 180 100
 182 96.6 76.0 114.0
 145 32.4 26.2 39.2

