

Data Path : Z:\VOASRV\HPCHEM1\MSVOA U\DATA\VU083118\  
 Data File : VU026496.D  
 Acq On : 31 Aug 2018 13:51  
 Operator : MD/SY  
 Sample : J4691-14  
 Misc : 5.0mL/MSVOA U/WATER  
 ALS Vial : 12 Sample Multiplier: 1

Instrument :  
 MSVOA\_U  
 ClientSampled :  
 BEE11

Integration Parameters: LSCINT.P

Integrator: RTE  
 Smoothing : OFF  
 Sampling : 1  
 Start Thrs: 0.2  
 Stop Thrs : 0

Filtering: 5  
 Min Area: 0 % of largest Peak  
 Max Peaks: 100  
 Peak Location: TOP

If leading or trailing edge < 100 prefer < Baseline drop else tangent >  
 Peak separation: 5

Method : Z:\VOASRV\HPCHEM1\MSVOA\_U\METHOD\SOMULM082918WMA.M  
 Title : VOC Analysis

Signal : TIC

peak #	R.T. min	first scan	max scan	last scan	PK TY	peak height	corr. area	corr. % max.	% of total
1	0.619	6	9	13	rBV	155	179	0.02%	0.003%
2	1.089	138	155	170	rBV	160393	186823	25.07%	3.489%
3	1.327	225	229	238	rVB	15583	15374	2.06%	0.287%
4	1.397	244	251	264	rBV	71862	72196	9.69%	1.348%
5	1.471	270	274	282	rVB	4584	4649	0.62%	0.087%
6	1.680	331	339	355	rVB	57906	74075	9.94%	1.383%
7	2.272	512	523	532	rBV	108423	165768	22.24%	3.095%
8	2.320	532	538	556	rVB	37511	58828	7.89%	1.099%
9	2.410	560	566	573	rBV	1107	1389	0.19%	0.026%
10	2.478	579	587	596	rVB	2724	3933	0.53%	0.073%
11	2.555	601	611	625	rBV4	3035	6083	0.82%	0.114%
12	2.606	625	627	630	rBV	332	266	0.04%	0.005%
13	2.703	652	657	662	rVB2	448	577	0.08%	0.011%
14	2.944	726	732	735	rBV2	271	338	0.05%	0.006%
15	2.982	735	744	758	rVB2	11541	19794	2.66%	0.370%
16	3.185	797	807	817	rVB2	1752	3222	0.43%	0.060%
17	3.577	925	929	933	rBV	186	212	0.03%	0.004%
18	3.625	941	944	947	rBV	286	217	0.03%	0.004%
19	3.664	954	956	961	rVB2	188	174	0.02%	0.003%
20	3.693	961	965	968	rBV	190	193	0.03%	0.004%
21	3.973	1041	1052	1053	rBV	297	376	0.05%	0.007%
22	3.992	1055	1058	1061	rBV	250	217	0.03%	0.004%
23	4.178	1101	1116	1120	rBV	46557	88354	11.86%	1.650%
24	4.648	1241	1262	1285	rBV	89764	211663	28.40%	3.952%
25	4.818	1311	1315	1320	rVV3	354	400	0.05%	0.007%
26	4.886	1332	1336	1339	rBV	418	328	0.04%	0.006%
27	4.915	1342	1345	1350	rVB	158	184	0.02%	0.003%
28	4.944	1350	1354	1359	rBV	166	238	0.03%	0.004%
29	4.998	1365	1371	1373	rBV2	604	709	0.10%	0.013%
30	5.204	1429	1435	1438	rBV	217	259	0.03%	0.005%
31	5.342	1455	1478	1509	rVB2	177316	540490	72.52%	10.093%
32	5.593	1543	1556	1568	rBV4	2791	5336	0.72%	0.100%
33	5.786	1604	1616	1633	rVB4	1783	4787	0.64%	0.089%
34	5.889	1633	1648	1678	rBV	190038	362460	48.63%	6.768%

Data Path : Z:\VOASRV\HPCHEM1\MSVOA U\DATA\VU083118\  
 Data File : VU026496.D  
 Acq On : 31 Aug 2018 13:51  
 Operator : MD/SY  
 Sample : J4691-14  
 Misc : 5.0mL/MSVOA U/WATER  
 ALS Vial : 12 Sample Multiplier: 1

Instrument :  
 MSVOA\_U  
 ClientSampleId :  
 BEE11

## Integration Parameters: LSCINT.P

Integrator: RTE  
 Smoothing : OFF  
 Sampling : 1  
 Start Thrs: 0.2  
 Stop Thrs : 0

Filtering: 5  
 Min Area: 0 % of largest Peak  
 Max Peaks: 100  
 Peak Location: TOP

If leading or trailing edge < 100 prefer < Baseline drop else tangent >  
 Peak separation: 5

Method : Z:\VOASRV\HPCHEM1\MSVOA\_U\METHOD\SOMULM082918WMA.M  
 Title : VOC Analysis

35	6.188	1728	1741	1757	rBV2	27399	52860	7.09%	0.987%
36	6.333	1773	1786	1808	rVB	121647	238981	32.07%	4.463%
37	6.432	1808	1817	1824	rBV4	1693	2846	0.38%	0.053%
38	6.535	1846	1849	1850	rBV4	332	176	0.02%	0.003%
39	6.587	1858	1865	1868	rBV2	245	337	0.05%	0.006%
40	6.629	1874	1878	1881	rBV	168	184	0.02%	0.003%
41	6.760	1916	1919	1922	rBV	211	190	0.03%	0.004%
42	6.825	1937	1939	1942	rVB	393	240	0.03%	0.004%
43	6.854	1945	1948	1951	rVV2	251	254	0.03%	0.005%
44	6.870	1951	1953	1958	rVB	310	244	0.03%	0.005%
45	7.172	2040	2047	2050	rBV	171	245	0.03%	0.005%
46	7.230	2053	2065	2088	rVB	60166	105073	14.10%	1.962%
47	7.317	2088	2092	2097	rBV	171	240	0.03%	0.004%
48	7.468	2130	2139	2147	rVB3	2025	2825	0.38%	0.053%
49	7.567	2156	2170	2187	rBV	240094	410523	55.08%	7.666%
50	7.850	2248	2258	2272	rVV2	42835	69605	9.34%	1.300%
51	7.934	2277	2284	2287	rBV3	323	386	0.05%	0.007%
52	8.185	2347	2362	2365	rBV	27006	45014	6.04%	0.841%
53	8.230	2366	2376	2391	rVV	438547	745273	100.00%	13.917%
54	8.313	2392	2402	2429	rVB	159476	273660	36.72%	5.110%
55	8.468	2444	2450	2462	rVB5	1936	2852	0.38%	0.053%
56	9.091	2631	2644	2669	rBV	270305	438957	58.90%	8.197%
57	9.268	2694	2699	2702	rBV2	228	278	0.04%	0.005%
58	9.294	2704	2707	2713	rVB2	411	534	0.07%	0.010%
59	9.403	2734	2741	2749	rBV	5596	9816	1.32%	0.183%
60	9.821	2864	2871	2879	rVV3	1369	1897	0.25%	0.035%
61	9.927	2894	2904	2911	rBV3	1711	2629	0.35%	0.049%
62	10.005	2924	2928	2931	rBV2	265	250	0.03%	0.005%
63	10.030	2931	2936	2944	rVV3	1146	1574	0.21%	0.029%
64	10.243	2997	3002	3010	rVB3	522	589	0.08%	0.011%
65	10.294	3015	3018	3024	rBV2	408	347	0.05%	0.006%
66	10.432	3048	3061	3077	rBV	165227	262115	35.17%	4.895%
67	10.571	3101	3104	3106	rVV	243	182	0.02%	0.003%
68	10.612	3106	3117	3130	rVV	7477	13614	1.83%	0.254%
69	10.731	3150	3154	3161	rVV3	909	966	0.13%	0.018%
70	10.802	3168	3176	3190	rBV4	2650	3513	0.47%	0.066%
71	10.873	3195	3198	3202	rBV	366	245	0.03%	0.005%

Data Path : Z:\VOASRV\HPCHEM1\MSVOA U\DATA\VU083118\  
 Data File : VU026496.D  
 Acq On : 31 Aug 2018 13:51  
 Operator : MD/SY  
 Sample : J4691-14  
 Misc : 5.0mL/MSVOA U/WATER  
 ALS Vial : 12 Sample Multiplier: 1

Instrument :  
 MSVOA\_U  
 ClientSampleId :  
 BEE11

## Integration Parameters: LSCINT.P

Integrator: RTE  
 Smoothing : OFF  
 Sampling : 1  
 Start Thrs: 0.2  
 Stop Thrs : 0

Filtering: 5  
 Min Area: 0 % of largest Peak  
 Max Peaks: 100  
 Peak Location: TOP

If leading or trailing edge < 100 prefer < Baseline drop else tangent >  
 Peak separation: 5

Method : Z:\VOASRV\HPCHEM1\MSVOA\_U\METHOD\SOMULM082918WMA.M  
 Title : VOC Analysis

72	11.082	3254	3263	3270	rVB4	4811	7235	0.97%	0.135%
73	11.143	3274	3282	3285	rBV3	1680	2146	0.29%	0.040%
74	11.207	3297	3302	3309	rVB2	1091	1179	0.16%	0.022%
75	11.259	3315	3318	3321	rBV2	439	348	0.05%	0.006%
76	11.320	3325	3337	3348	rBV5	5767	12022	1.61%	0.224%
77	11.484	3376	3388	3408	rBV	260229	405000	54.34%	7.563%
78	11.580	3413	3418	3421	rBV5	1144	1168	0.16%	0.022%
79	11.747	3462	3470	3483	rBV2	4883	8951	1.20%	0.167%
80	11.860	3494	3505	3522	rVV	244858	387370	51.98%	7.233%
81	11.976	3532	3541	3545	rBV3	307	487	0.07%	0.009%
82	12.001	3545	3549	3552	rBV	292	241	0.03%	0.005%
83	12.037	3556	3560	3563	rBV	327	301	0.04%	0.006%
84	12.345	3653	3656	3660	rVB2	246	218	0.03%	0.004%
85	12.477	3687	3697	3709	rVB4	1666	3087	0.41%	0.058%
86	12.570	3720	3726	3733	rBV5	674	866	0.12%	0.016%
87	12.641	3745	3748	3753	rVB2	196	209	0.03%	0.004%
88	12.763	3784	3786	3790	rVB	265	171	0.02%	0.003%
89	13.226	3926	3930	3933	rBV3	302	294	0.04%	0.005%
90	13.339	3960	3965	3969	rBV2	233	191	0.03%	0.004%
91	13.416	3985	3989	3992	rBV2	229	181	0.02%	0.003%
92	13.567	4033	4036	4038	rBV2	303	213	0.03%	0.004%
93	13.738	4086	4089	4095	rVB2	311	184	0.02%	0.003%
94	13.808	4107	4111	4114	rBV	261	219	0.03%	0.004%
95	13.860	4121	4127	4128	rBV	256	232	0.03%	0.004%
96	14.017	4173	4176	4179	rVB2	352	250	0.03%	0.005%
97	14.075	4189	4194	4196	rBV	251	269	0.04%	0.005%
98	14.281	4249	4258	4266	rBV2	1163	2189	0.29%	0.041%
99	15.850	4744	4746	4748	rBV2	414	174	0.02%	0.003%
100	16.303	4885	4887	4890	rVB2	605	295	0.04%	0.006%

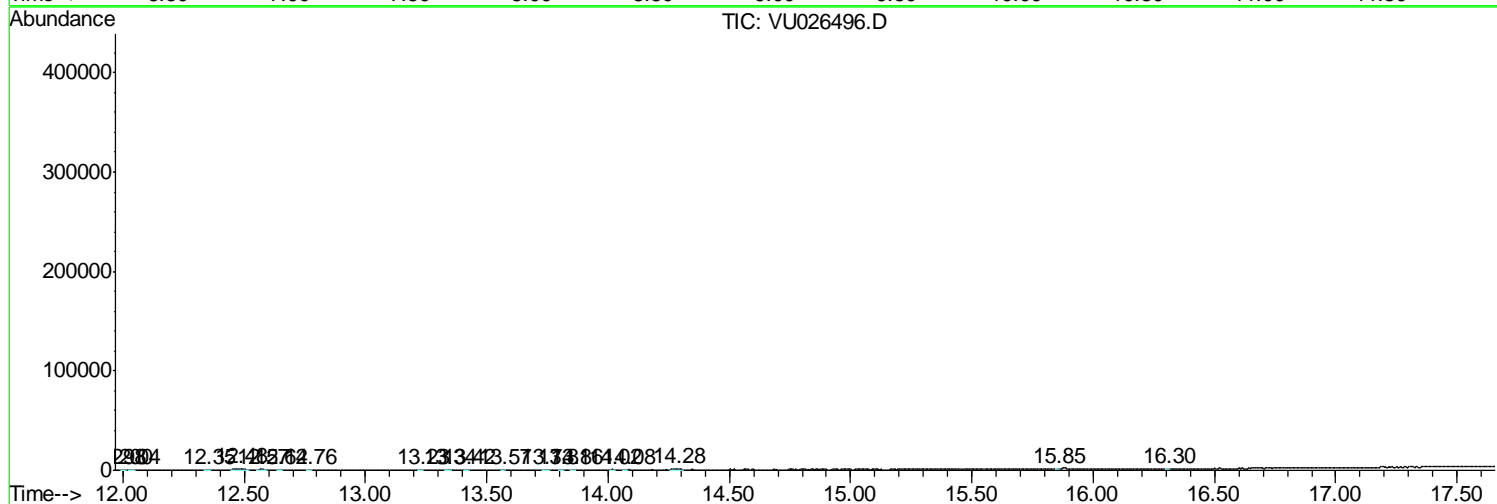
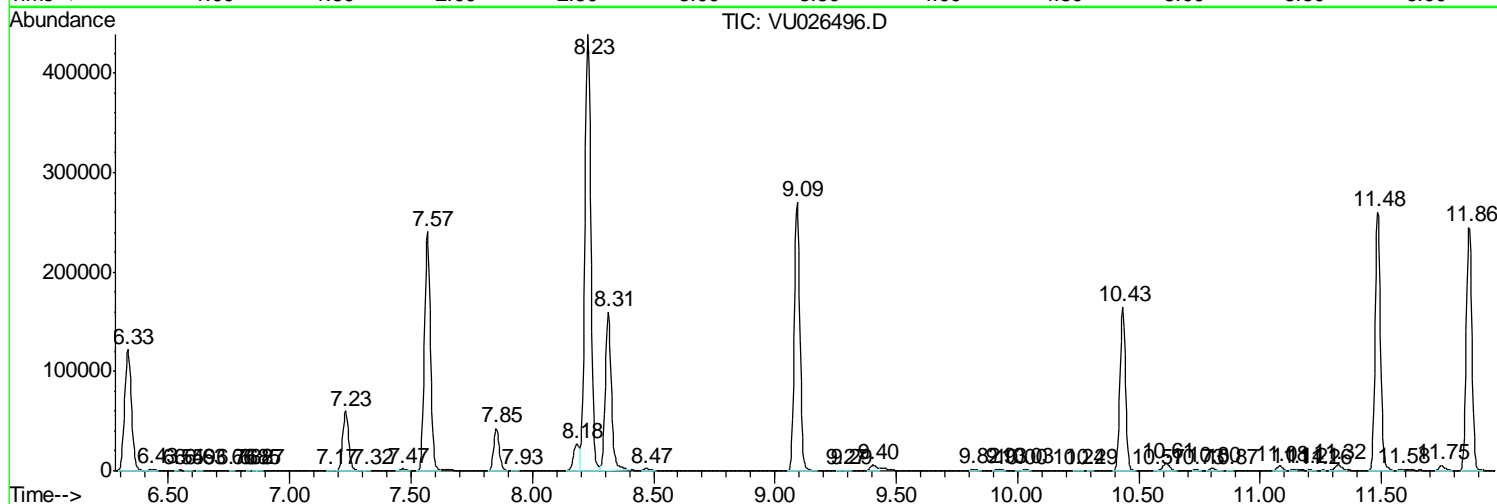
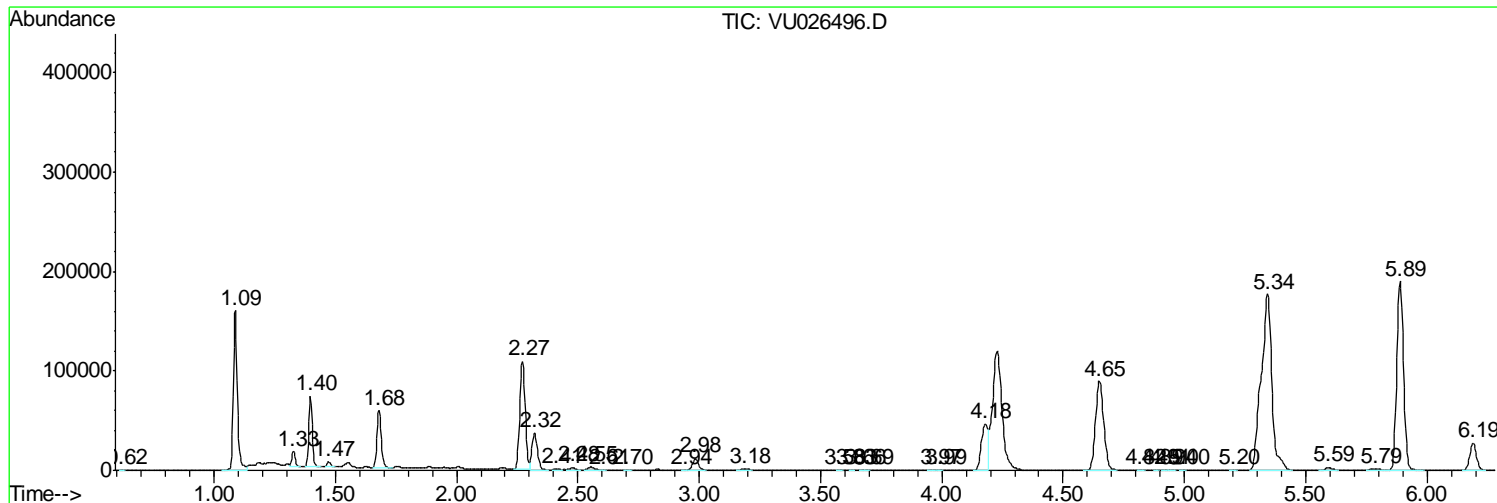
Sum of corrected areas: 5355295

Data Path : Z:\VOASRV\HPCHEM1\MSVOA U\DATA\VU083118\  
 Data File : VU026496.D  
 Acq On : 31 Aug 2018 13:51  
 Operator : MD/SY  
 Sample : J4691-14  
 Misc : 5.0mL/MSVOA U/WATER  
 ALS Vial : 12 Sample Multiplier: 1

Instrument :  
 MSVOA\_U  
 ClientSampled :  
 BEE11

Quant Method : Z:\VOASRV\HPCHEM1\MSVOA\_U\METHOD\SOMULM082918WMA.M  
 Quant Title : VOC Analysis

TIC Library : C:\DATABASE\NIST11.L  
 TIC Integration Parameters: LSCINT.P



Data Path : Z:\VOASRV\HPCHEM1\MSVOA\_U\DATA\VU083118\  
Data File : VU026496.D  
Acq On : 31 Aug 2018 13:51  
Operator : MD/SY  
Sample : J4691-14  
Misc : 5.0mL/MSVOA\_U/WATER  
ALS Vial : 12 Sample Multiplier: 1

Instrument :  
MSVOA\_U  
ClientSampled :  
BEE11

Quant Method : Z:\VOASRV\HPCHEM1\MSVOA\_U\METHOD\SOMULM082918WMA.M  
Quant Title : VOC Analysis

TIC Library : C:\DATABASE\NIST11.L  
TIC Integration Parameters: LSCINT.P

No Library Search Compounds Detected

\*\*\*\*\*

Data Path : Z:\VOASRV\HPCHEM1\MSVOA\_U\DATA\VU083118\  
Data File : VU026496.D  
Acq On : 31 Aug 2018 13:51  
Operator : MD/SY  
Sample : J4691-14  
Misc : 5.0mL/MSVOA\_U/WATER  
ALS Vial : 12 Sample Multiplier: 1

Instrument :  
MSVOA\_U  
ClientSampleId :  
BEE11

Quant Method : Z:\VOASRV\HPCHEM1\MSVOA\_U\METHOD\SOMULM082918WMA.M  
Quant Title : VOC Analysis

TIC Library : C:\DATABASE\NIST11.L  
TIC Integration Parameters: LSCINT.P

TIC Top Hit name	RT	EstConc	Units	Response	--Internal Standard--			
					#	RT	Resp	Conc

---