

Data Path : Z:\voasrv\HPCHEM1\MSVOA\_U\Data\VU090121\  
 Data File : VU044542.D  
 Acq On : 01 Sep 2021 09:29  
 Operator : SY/MD  
 Sample : VSTDCCC010  
 Misc : 25.0mL/MSVOA\_U/WATER  
 ALS Vial : 2 Sample Multiplier: 1

Instrument :  
 MSVOA\_U  
 ClientSampled :

Quant Time: Sep 02 11:42:27 2021  
 Quant Method : Z:\voasrv\HPCHEM1\MSVOA\_U\Method\524U083121DW.M  
 Quant Title : METHOD 524.2 VOLATILES DRINKING WATER  
 QLast Update : Wed Sep 01 01:29:46 2021  
 Response via : Initial Calibration

Compound	R.T.	QIon	Response	Conc	Units	Dev(Min)
Internal Standards						
1) Fluorobenzene	6.121	96	21270	1.00	ug/l	# 0.00
System Monitoring Compounds						
57) 4-Bromofluorobenzene	10.639	95	9058	1.11	ug/l	0.00
Spiked Amount	1.000		Recovery	=	111.00%	
68) 1,2-Dichlorobenzene-d4	12.201	152	9361	0.99	ug/l	0.00
Spiked Amount	1.000		Recovery	=	99.00%	
Target Compounds						
						Qvalue
2) Dichlorodifluoromethane	1.388	85	90316	10.62	ug/l	100
3) Chloromethane	1.523	50	99123	10.21	ug/l	98
4) Vinyl Chloride	1.607	62	113638	10.15	ug/l	98
5) Bromomethane	1.861	94	89807	9.97	ug/l	98
6) Chloroethane	1.938	64	85551	10.15	ug/l	100
7) Trichlorofluoromethane	2.144	101	186867	10.37	ug/l	99
8) 1,1,2-Trichloro-1,2,2-...	2.588	101	114649	10.50	ug/l	99
9) 1,1-Dichloroethene	2.588	96	104146	10.33	ug/l	100
10) Iodomethane	2.729	142	130134	10.69	ug/l	100
11) Allyl Chloride	2.929	41	118698	10.32	ug/l	100
12) Acrylonitrile	3.327	53	38162	20.97	ug/l	94
13) Acetone	2.636	43	50702	48.01	ug/l	99
14) Carbon Disulfide	2.800	76	309951	10.58	ug/l	100
15) Methylene Chloride	3.054	84	121161	7.71	ug/l	98
16) trans-1,2-Dichloroethene	3.359	96	112957	10.38	ug/l	100
17) 1,1-Dichloroethane	3.877	63	187296	10.22	ug/l	100
18) 2-Butanone	4.732	43	99289	49.93	ug/l	99
19) Cyclohexane	5.388	56	160332	9.68	ug/l	95
20) Methylcyclohexane	6.768	83	105783	10.98	ug/l	99
21) 2,2-Dichloropropane	4.674	77	172717	10.34	ug/l	99
22) cis-1,2-Dichloroethene	4.674	96	127705	10.27	ug/l	99
23) Diethyl Ether	2.385	59	73672	10.29	ug/l	99
24) tert-Butyl Alcohol	3.205	59	38715	103.05	ug/l	97
25) Methyl tert-Butyl Ether	3.379	73	254688	10.24	ug/l	100
26) Bromochloromethane	4.983	128	58763	10.02	ug/l	99
27) Chloroform	5.099	83	213124	9.96	ug/l	100
28) 1,1,1-Trichloroethane	5.321	97	185816	10.15	ug/l	99
29) 1,1-Dichloropropene	5.530	75	83995	10.45	ug/l	99
30) Carbon Tetrachloride	5.527	117	84975	10.65	ug/l	99
31) Isopropyl Ether	4.012	45	267915	10.36	ug/l	100
32) Ethyl-t-butyl ether	4.523	59	288152	10.15	ug/l	99
33) Tert-Amyl methyl ether	5.961	73	142584	10.42	ug/l	98
34) Propionitrile	4.800	54	26000	47.52	ug/l	# 95
35) Benzene	5.781	78	241818	10.47	ug/l	99
36) 1,2-Dichloroethane	5.806	62	77402	10.27	ug/l	98
37) Trichloroethene	6.549	130	68261	10.25	ug/l	99
38) 1,2-Dichloropropane	6.803	63	61831	10.63	ug/l	97
39) Methacrylonitrile	4.993	41	30872	10.07	ug/l	97
40) Methyl acrylate	4.864	55	50769	10.17	ug/l	98
41) Tetrahydrofuran	5.083	42	27438	18.36	ug/l	92
42) 1-Chlorobutane	5.462	56	109460	10.58	ug/l	99
43) Dibromomethane	6.928	93	37386	10.50	ug/l	99
44) Bromodichloromethane	7.115	83	86172	10.48	ug/l	99

Data Path : Z:\voasrv\HPCHEM1\MSVOA\_U\Data\VU090121\  
 Data File : VU044542.D  
 Acq On : 01 Sep 2021 09:29  
 Operator : SY/MD  
 Sample : VSTDCCC010  
 Misc : 25.0mL/MSVOA\_U/WATER  
 ALS Vial : 2 Sample Multiplier: 1

Instrument :  
 MSVOA\_U  
 ClientSampleId :

Quant Time: Sep 02 11:42:27 2021  
 Quant Method : Z:\voasrv\HPCHEM1\MSVOA\_U\Method\524U083121DW.M  
 Quant Title : METHOD 524.2 VOLATILES DRINKING WATER  
 QLast Update : Wed Sep 01 01:29:46 2021  
 Response via : Initial Calibration

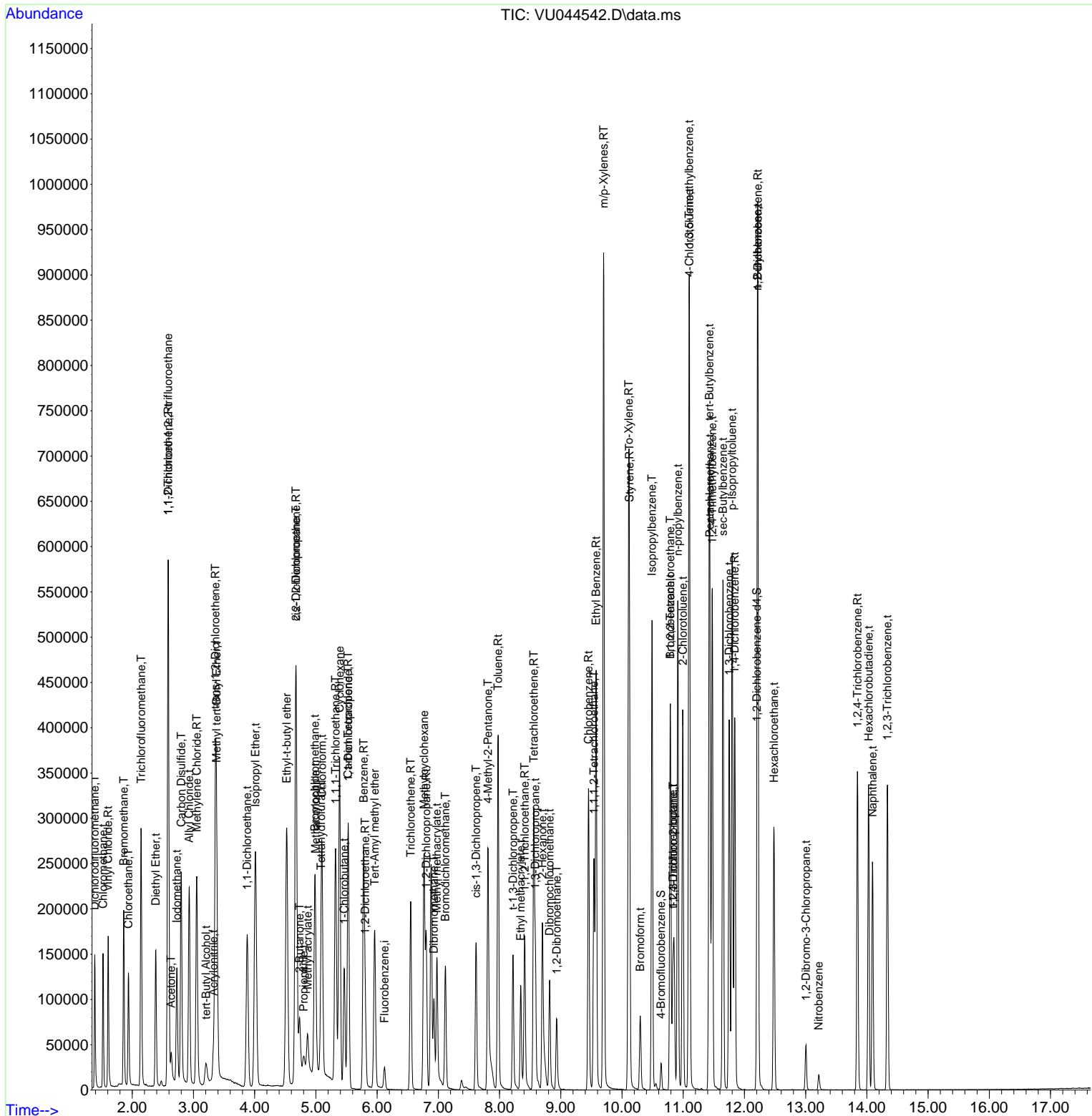
Compound	R.T.	QIon	Response	Conc	Units	Dev(Min)
45) 4-Methyl-2-Pentanone	7.809	43	197124	54.06	ug/l	99
46) t-1,4-Dichloro-2-butene	10.835	75	85649	55.63	ug/l #	53
47) Methyl methacrylate	6.977	69	64427	21.77	ug/l	96
48) Ethyl methacrylate	8.346	69	65811	10.96	ug/l	97
49) Toluene	7.977	92	167962	11.02	ug/l	100
50) t-1,3-Dichloropropene	8.221	75	83158	11.51	ug/l	98
51) cis-1,3-Dichloropropene	7.616	75	94279	11.45	ug/l	100
52) 1,1,2-Trichloroethane	8.411	97	54899	10.83	ug/l	99
53) 1,3-Dichloropropane	8.584	76	91701	10.55	ug/l	99
54) 2-Hexanone	8.700	43	140268	54.09	ug/l	98
55) Dibromochloromethane	8.819	129	63161	11.00	ug/l	100
56) 1,2-Dibromoethane	8.932	107	53554	10.76	ug/l	98
58) Tetrachloroethene	8.559	164	67351	10.73	ug/l	98
59) Chlorobenzene	9.452	112	186312	10.78	ug/l	100
60) 1,1,1,2-Tetrachloroethane	9.542	131	65974	10.66	ug/l	98
61) Pentachloroethane	11.436	117	54262	11.06	ug/l	99
62) Hexachloroethane	12.481	117	57344	11.60	ug/l	100
63) Ethyl Benzene	9.578	91	325330	11.39	ug/l	99
64) m/p-Xylenes	9.700	106	267578	23.34	ug/l	98
65) o-Xylene	10.108	106	126131	11.36	ug/l	99
66) Styrene	10.121	104	218224	11.62	ug/l	100
67) Bromoform	10.298	173	36096	11.14	ug/l	99
69) Isopropylbenzene	10.491	105	330900	11.43	ug/l	100
70) 1,1,2,2-Tetrachloroethane	10.790	83	70951	10.40	ug/l	99
71) 1,2,3-Trichloropropane	10.835	75	85649	17.62	ug/l	65
72) Bromobenzene	10.790	156	82077	11.04	ug/l	99
73) n-propylbenzene	10.912	120	93901	11.61	ug/l	100
74) 2-Chlorotoluene	10.993	126	80870	11.15	ug/l	99
75) 1,3,5-Trimethylbenzene	11.095	105	292215	11.63	ug/l	100
76) 4-Chlorotoluene	11.102	126	86448	11.21	ug/l	97
77) tert-Butylbenzene	11.427	119	287034	11.47	ug/l	100
78) 1,2,4-Trimethylbenzene	11.475	105	299956	11.71	ug/l	100
79) sec-Butylbenzene	11.648	105	388480	11.45	ug/l	100
80) Nitrobenzene	13.214	77	9140	57.86	ug/l	98
81) p-Isopropyltoluene	11.800	119	329881	11.86	ug/l	100
82) 1,3-Dichlorobenzene	11.751	146	166536	11.18	ug/l	99
83) 1,4-Dichlorobenzene	11.841	146	166815	11.13	ug/l	100
84) n-Butylbenzene	12.214	91	320263	12.12	ug/l	99
85) 1,2-Dichlorobenzene	12.218	146	162429	10.86	ug/l	99
86) 1,2-Dibromo-3-Chloropr...	13.005	75	11953	11.81	ug/l	96
87) 1,2,4-Trichlorobenzene	13.848	180	109071	11.65	ug/l	97
88) Hexachlorobutadiene	14.028	225	57004	10.96	ug/l	99
89) Naphthalene	14.092	128	201189	11.02	ug/l	100
90) 1,2,3-Trichlorobenzene	14.336	180	102275	11.29	ug/l	100

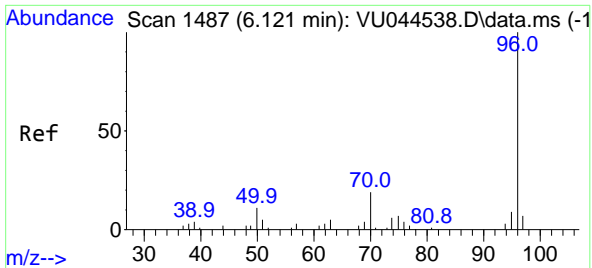
(#) = qualifier out of range (m) = manual integration (+) = signals summed

Data Path : Z:\voasrv\HPCHEM1\MSVOA\_U\Data\VU090121\  
 Data File : VU044542.D  
 Acq On : 01 Sep 2021 09:29  
 Operator : SY/MD  
 Sample : VSTDCCC010  
 Misc : 25.0mL/MSVOA\_U/WATER  
 ALS Vial : 2 Sample Multiplier: 1

Instrument :  
 MSVOA\_U  
 Client Sampled :

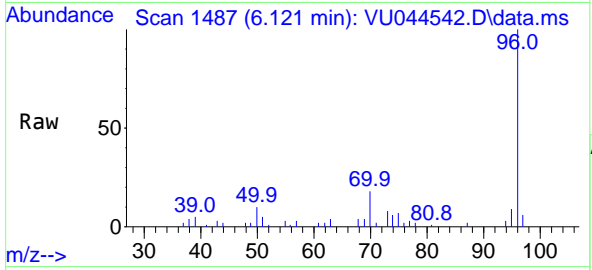
Quant Time: Sep 02 11:42:27 2021  
 Quant Method : Z:\voasrv\HPCHEM1\MSVOA\_U\Method\524U083121DW.M  
 Quant Title : METHOD 524.2 VOLATILES DRINKING WATER  
 QLast Update : Wed Sep 01 01:29:46 2021  
 Response via : Initial Calibration





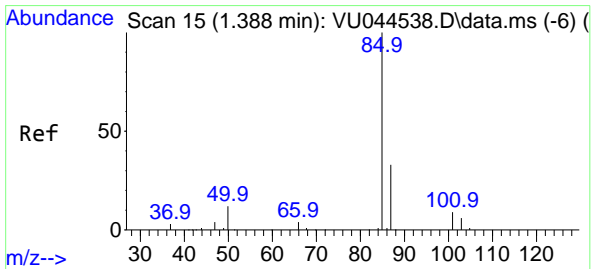
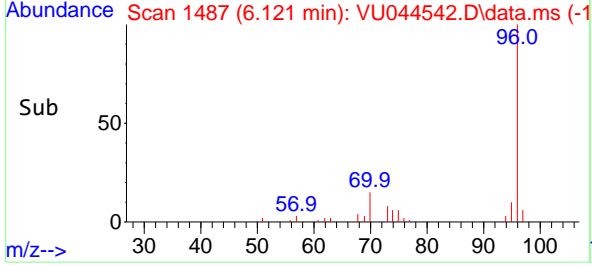
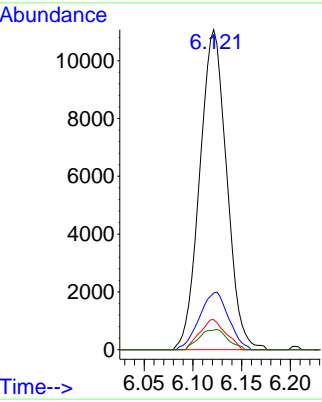
#1  
 Fluorobenzene  
 Concen: 1.00 ug/l  
 RT: 6.121 min Scan# 1487  
 Delta R.T. 0.000 min  
 Lab File: VU044542.D  
 Acq: 01 Sep 2021 09:29

Instrument :  
 MSVOA\_U  
 ClientSampled :

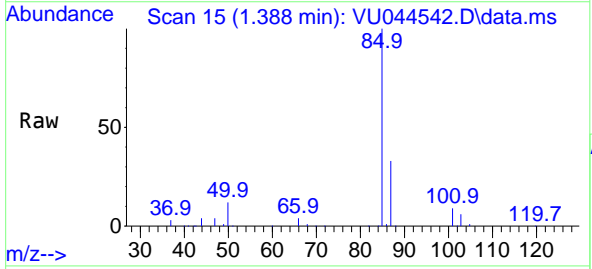


Tgt Ion: 96 Resp: 21270

Ion	Ratio	Lower	Upper
96	100		
70	19.5	16.2	24.2
95	9.0	7.0	10.6
97	0.0	0.0	0.0

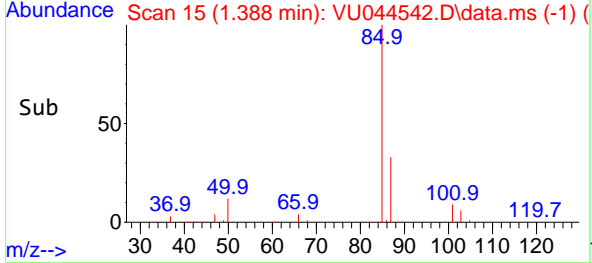
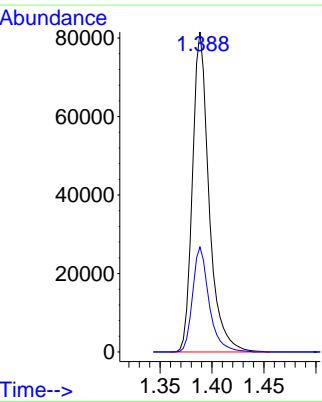


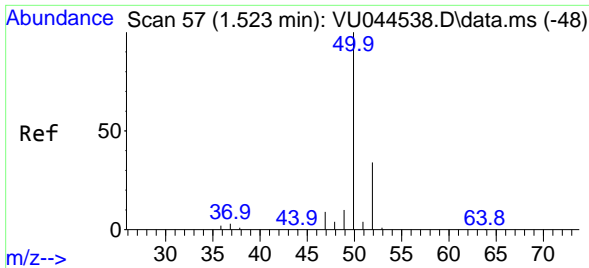
#2  
 Dichlorodifluoromethane  
 Concen: 10.62 ug/l  
 RT: 1.388 min Scan# 15  
 Delta R.T. 0.000 min  
 Lab File: VU044542.D  
 Acq: 01 Sep 2021 09:29



Tgt Ion: 85 Resp: 90316

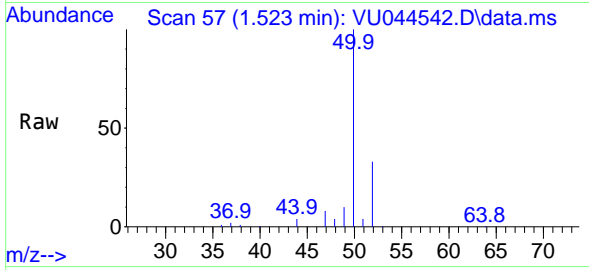
Ion	Ratio	Lower	Upper
85	100		
87	32.8	16.3	48.9



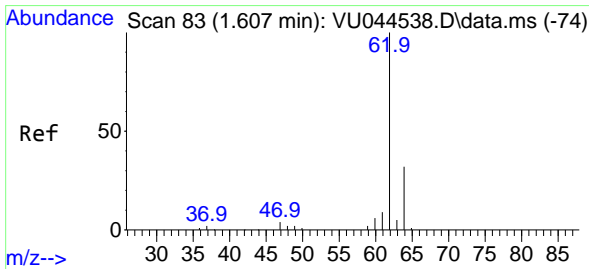
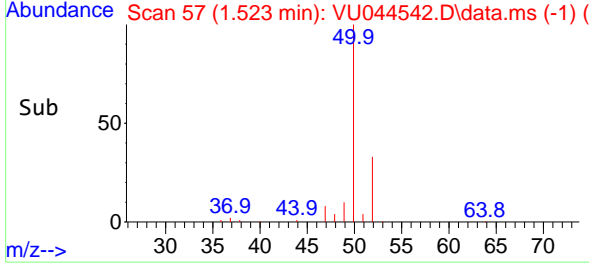
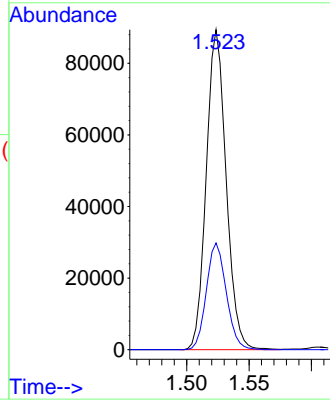


#3  
 Chloromethane  
 Concen: 10.21 ug/l  
 RT: 1.523 min Scan# 57  
 Delta R.T. 0.000 min  
 Lab File: VU044542.D  
 Acq: 01 Sep 2021 09:29

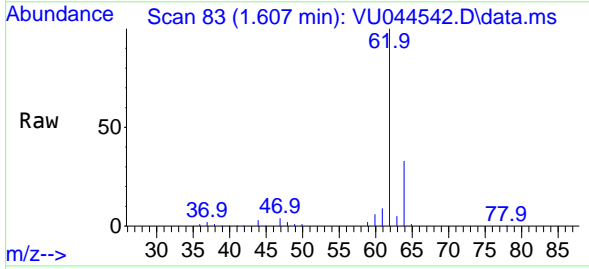
Instrument :  
 MSVOA\_U  
 ClientSampled :



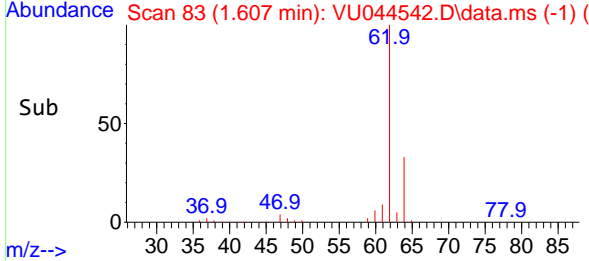
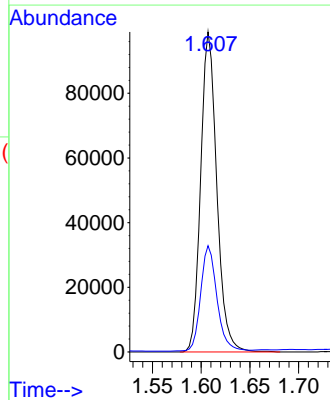
Tgt Ion: 50 Resp: 99123  
 Ion Ratio Lower Upper  
 50 100  
 52 33.3 27.4 41.0

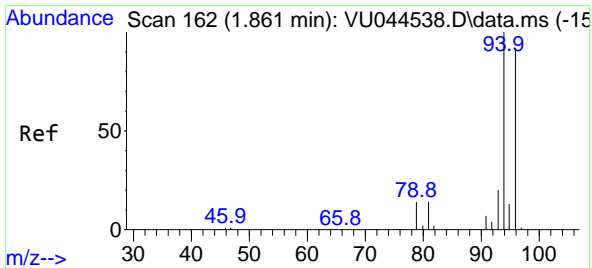


#4  
 Vinyl Chloride  
 Concen: 10.15 ug/l  
 RT: 1.607 min Scan# 83  
 Delta R.T. 0.000 min  
 Lab File: VU044542.D  
 Acq: 01 Sep 2021 09:29



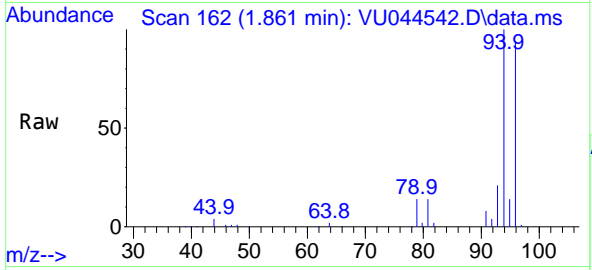
Tgt Ion: 62 Resp: 113638  
 Ion Ratio Lower Upper  
 62 100  
 64 32.8 25.3 37.9



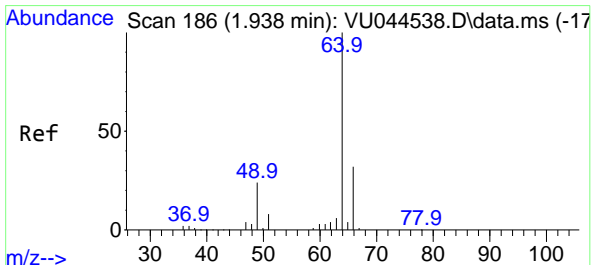
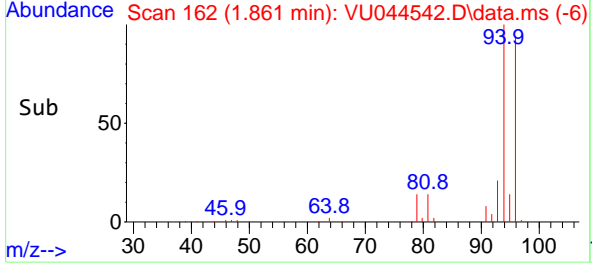
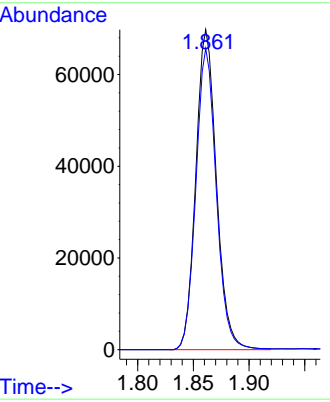


#5  
 Bromomethane  
 Concen: 9.97 ug/l  
 RT: 1.861 min Scan# 162  
 Delta R.T. 0.000 min  
 Lab File: VU044542.D  
 Acq: 01 Sep 2021 09:29

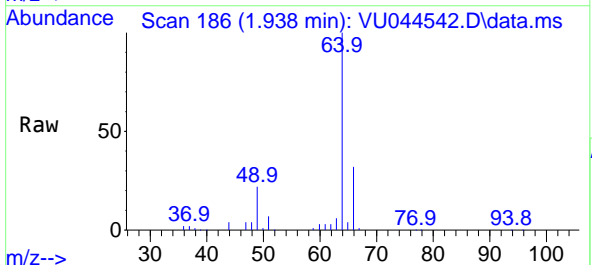
Instrument :  
 MSVOA\_U  
 ClientSampled :



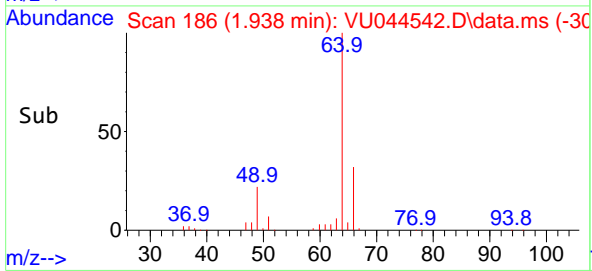
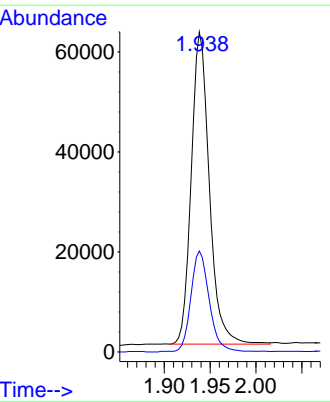
Tgt Ion: 94 Resp: 89807  
 Ion Ratio Lower Upper  
 94 100  
 96 94.1 73.4 110.2

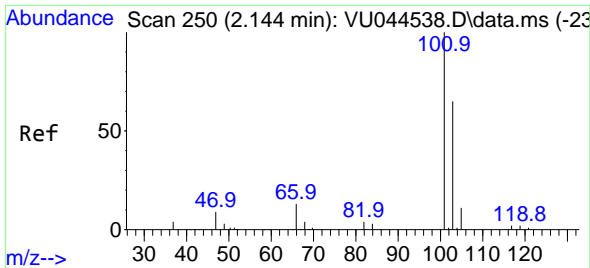


#6  
 Chloroethane  
 Concen: 10.15 ug/l  
 RT: 1.938 min Scan# 186  
 Delta R.T. 0.000 min  
 Lab File: VU044542.D  
 Acq: 01 Sep 2021 09:29



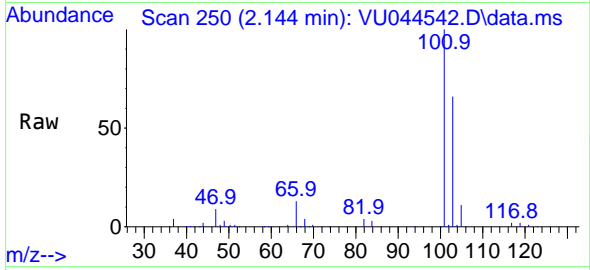
Tgt Ion: 64 Resp: 85551  
 Ion Ratio Lower Upper  
 64 100  
 66 32.2 25.7 38.5



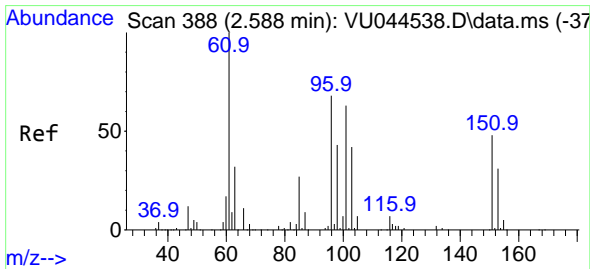
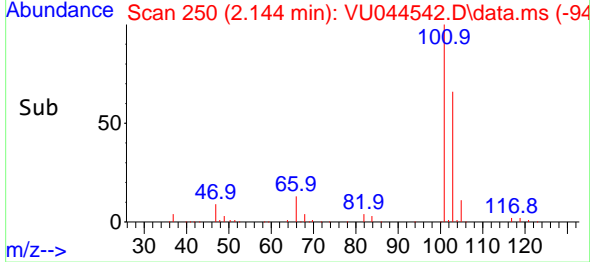
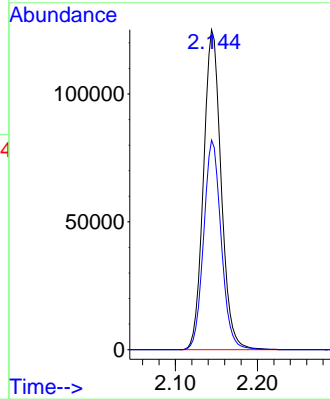


#7  
 Trichlorofluoromethane  
 Concen: 10.37 ug/l  
 RT: 2.144 min Scan# 250  
 Delta R.T. 0.000 min  
 Lab File: VU044542.D  
 Acq: 01 Sep 2021 09:29

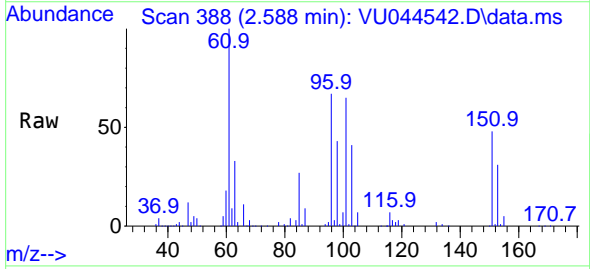
Instrument :  
 MSVOA\_U  
 ClientSampled :



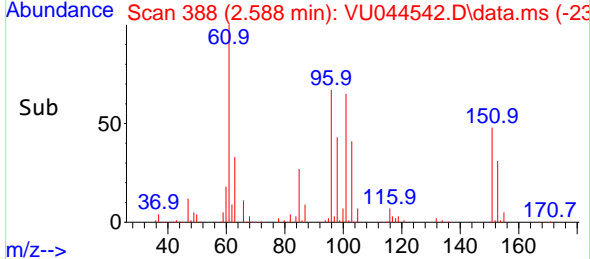
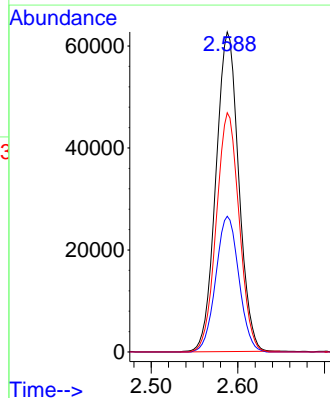
Tgt Ion:101 Resp: 186867  
 Ion Ratio Lower Upper  
 101 100  
 103 65.5 51.8 77.6

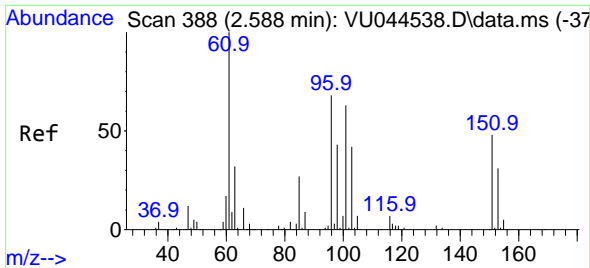


#8  
 1,1,2-Trichloro-1,2,2-trifluoroethane  
 Concen: 10.50 ug/l  
 RT: 2.588 min Scan# 388  
 Delta R.T. 0.000 min  
 Lab File: VU044542.D  
 Acq: 01 Sep 2021 09:29



Tgt Ion:101 Resp: 114649  
 Ion Ratio Lower Upper  
 101 100  
 85 43.1 34.6 52.0  
 151 75.1 61.0 91.4

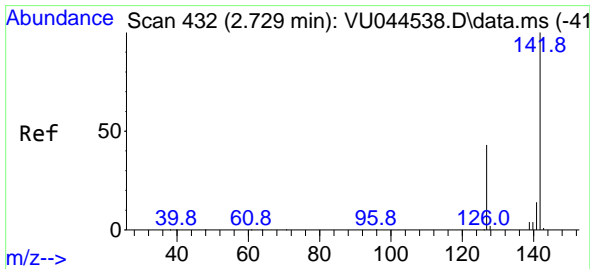
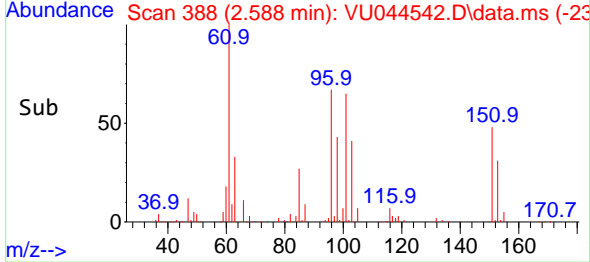
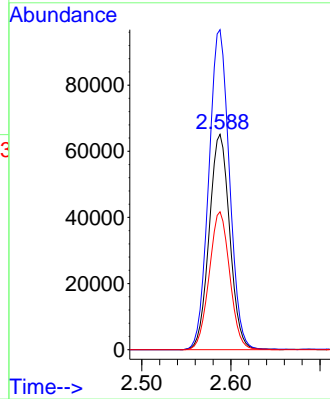
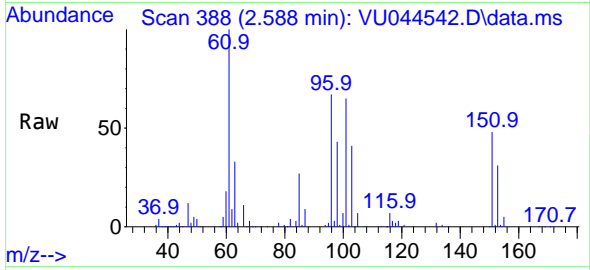




#9  
 1,1-Dichloroethene  
 Concen: 10.33 ug/l  
 RT: 2.588 min Scan# 388  
 Delta R.T. 0.000 min  
 Lab File: VU044542.D  
 Acq: 01 Sep 2021 09:29

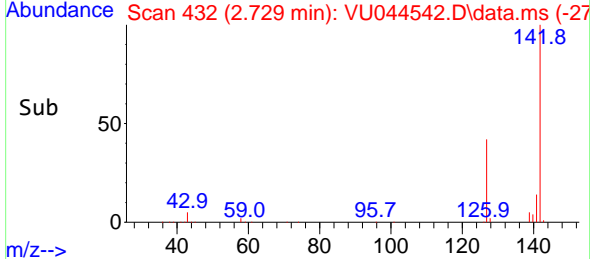
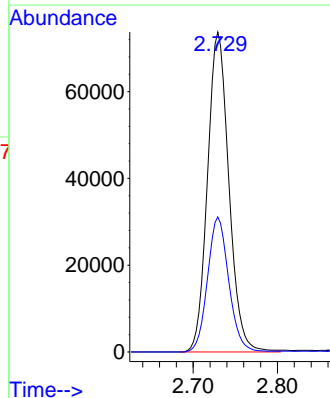
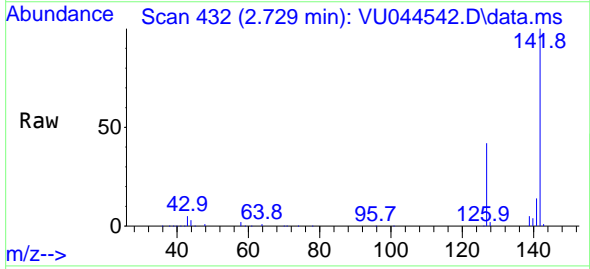
Instrument :  
 MSVOA\_U  
 ClientSampled :

Tgt Ion: 96 Resp: 104146  
 Ion Ratio Lower Upper  
 96 100  
 61 148.6 0.0 444.6  
 98 64.1 0.0 126.8

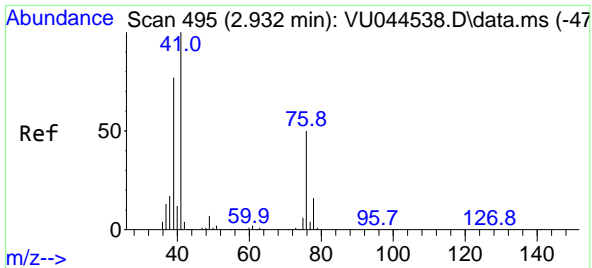


#10  
 Iodomethane  
 Concen: 10.69 ug/l  
 RT: 2.729 min Scan# 432  
 Delta R.T. 0.000 min  
 Lab File: VU044542.D  
 Acq: 01 Sep 2021 09:29

Tgt Ion: 142 Resp: 130134  
 Ion Ratio Lower Upper  
 142 100  
 127 41.9 33.6 50.4

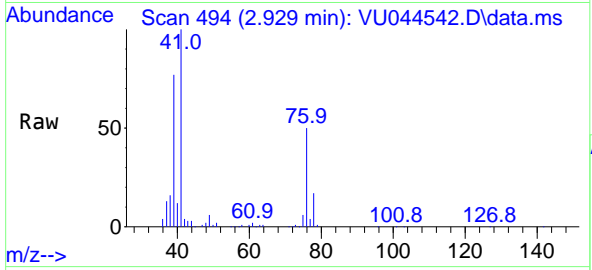




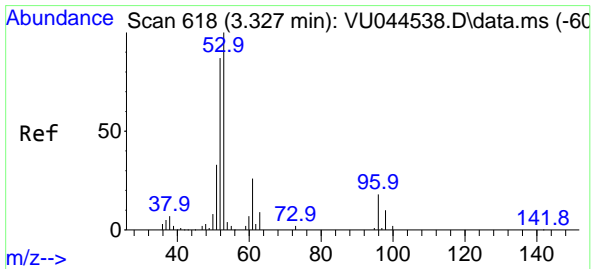
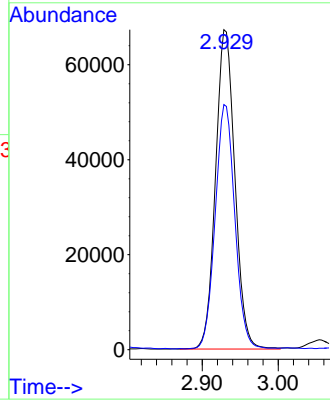
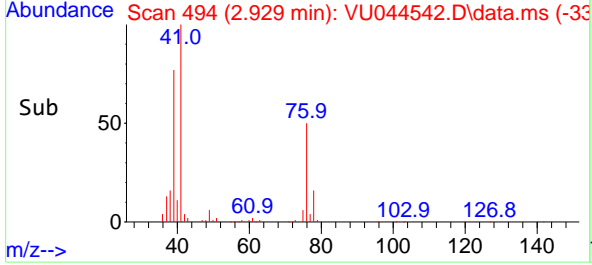


#11  
 Allyl Chloride  
 Concen: 10.32 ug/l  
 RT: 2.929 min Scan# 494  
 Delta R.T. -0.003 min  
 Lab File: VU044542.D  
 Acq: 01 Sep 2021 09:29

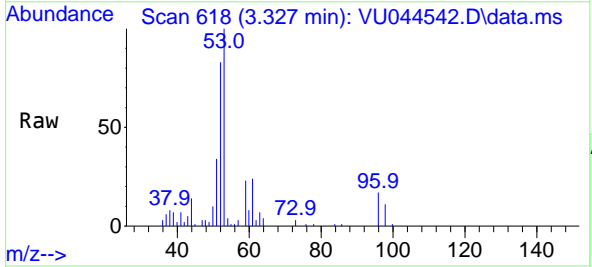
Instrument : MSVOA\_U  
 ClientSampled :



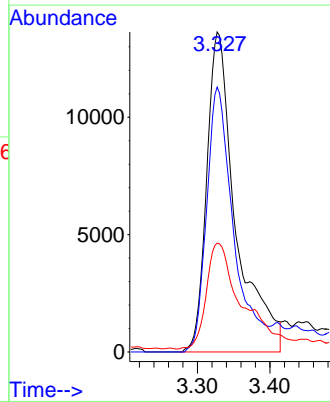
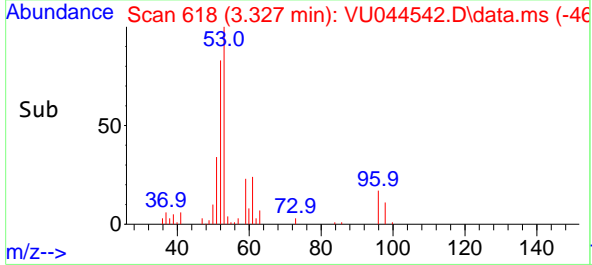
Tgt Ion: 41 Resp: 118698  
 Ion Ratio Lower Upper  
 41 100  
 39 77.7 62.2 93.4

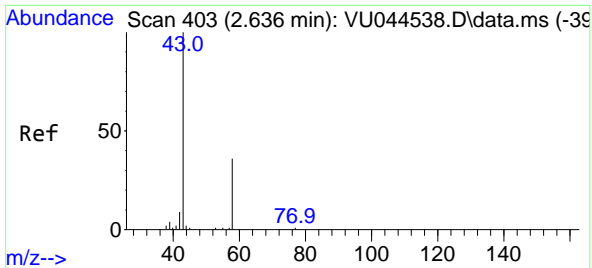


#12  
 Acrylonitrile  
 Concen: 20.97 ug/l  
 RT: 3.327 min Scan# 618  
 Delta R.T. 0.000 min  
 Lab File: VU044542.D  
 Acq: 01 Sep 2021 09:29



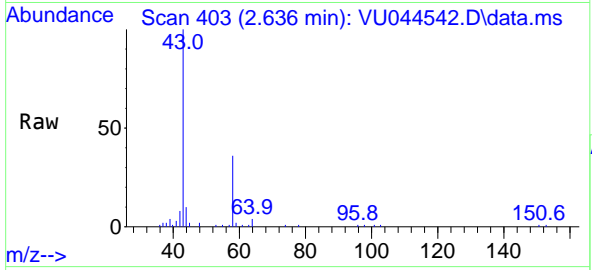
Tgt Ion: 53 Resp: 38162  
 Ion Ratio Lower Upper  
 53 100  
 52 76.5 58.0 87.0  
 51 40.8 29.0 43.4



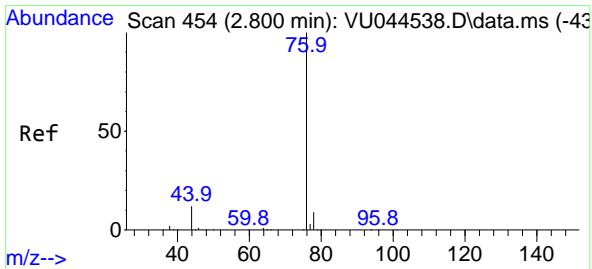
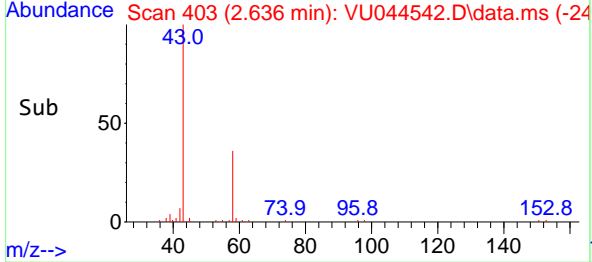
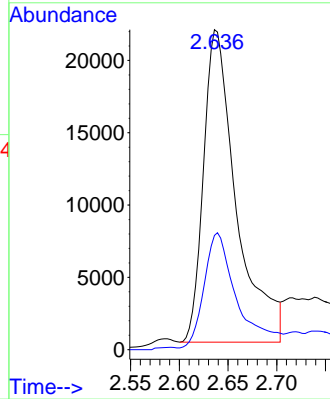


#13  
 Acetone  
 Concen: 48.01 ug/l  
 RT: 2.636 min Scan# 403  
 Delta R.T. 0.000 min  
 Lab File: VU044542.D  
 Acq: 01 Sep 2021 09:29

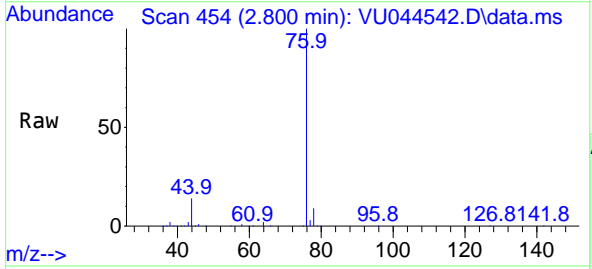
Instrument :  
 MSVOA\_U  
 ClientSampled :



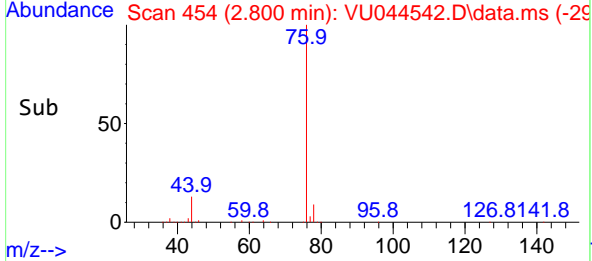
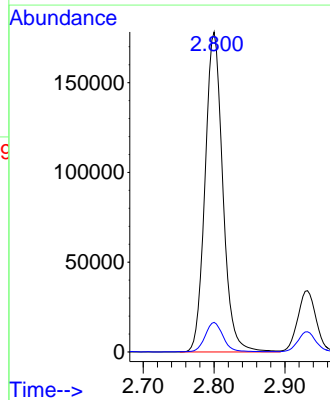
Tgt Ion: 43 Resp: 50702  
 Ion Ratio Lower Upper  
 43 100  
 58 36.0 28.5 42.7

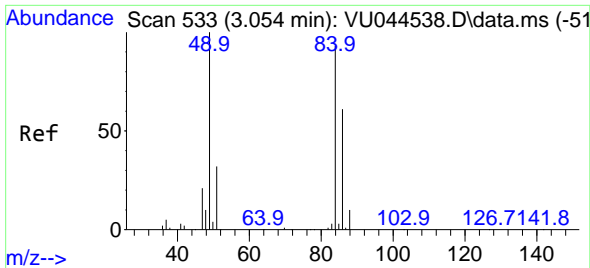


#14  
 Carbon Disulfide  
 Concen: 10.58 ug/l  
 RT: 2.800 min Scan# 454  
 Delta R.T. 0.000 min  
 Lab File: VU044542.D  
 Acq: 01 Sep 2021 09:29



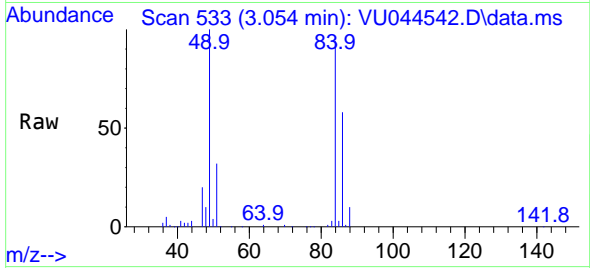
Tgt Ion: 76 Resp: 309951  
 Ion Ratio Lower Upper  
 76 100  
 78 9.1 7.4 11.2



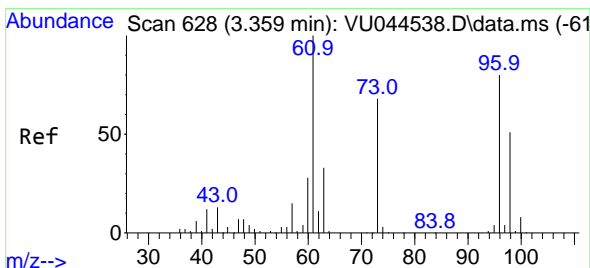
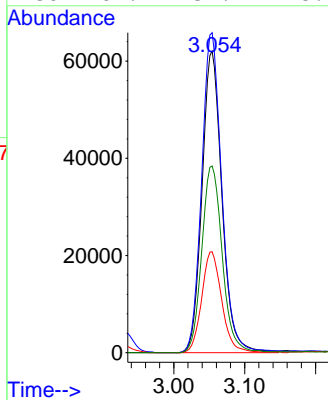
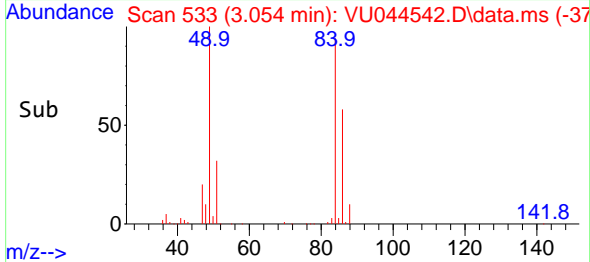


#15  
Methylene Chloride  
Concen: 7.71 ug/l  
RT: 3.054 min Scan# 533  
Delta R.T. 0.000 min  
Lab File: VU044542.D  
Acq: 01 Sep 2021 09:29

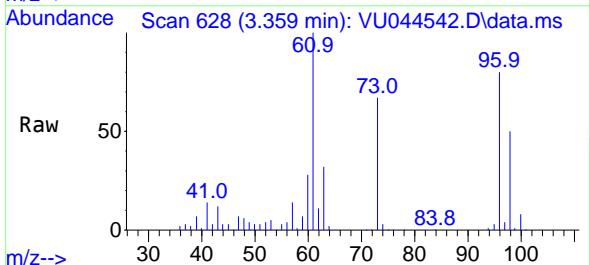
Instrument :  
MSVOA\_U  
ClientSampled :



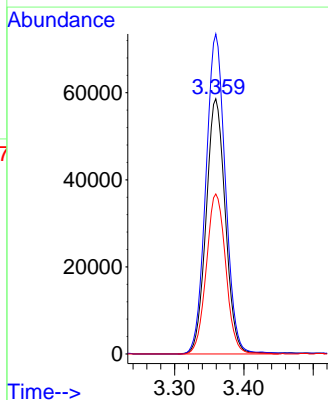
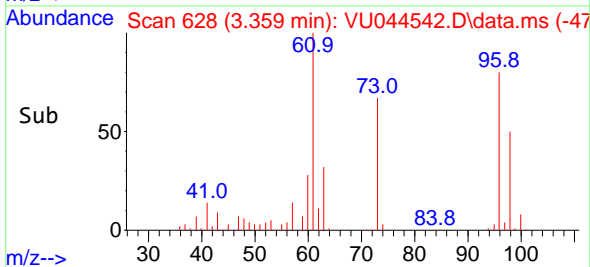
Tgt Ion: 84 Resp: 121161  
Ion Ratio Lower Upper  
84 100  
49 106.1 85.6 128.4  
51 33.5 0.0 67.6  
86 61.9 52.1 78.1

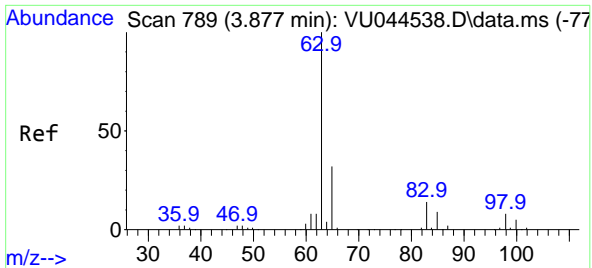


#16  
trans-1,2-Dichloroethene  
Concen: 10.38 ug/l  
RT: 3.359 min Scan# 628  
Delta R.T. 0.000 min  
Lab File: VU044542.D  
Acq: 01 Sep 2021 09:29



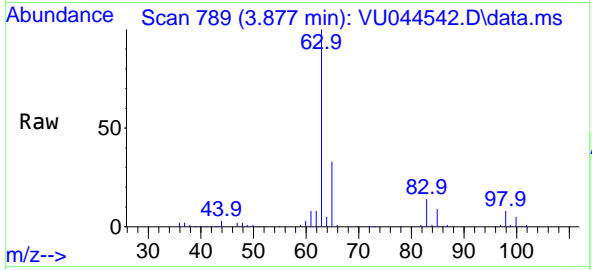
Tgt Ion: 96 Resp: 112957  
Ion Ratio Lower Upper  
96 100  
61 125.4 99.9 149.9  
98 62.7 50.5 75.7





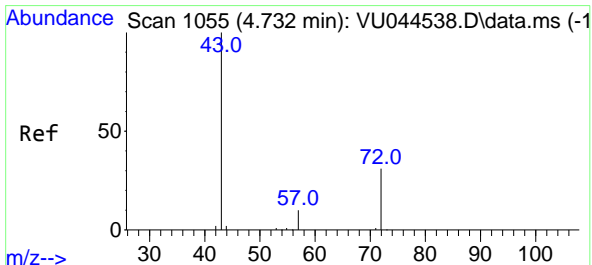
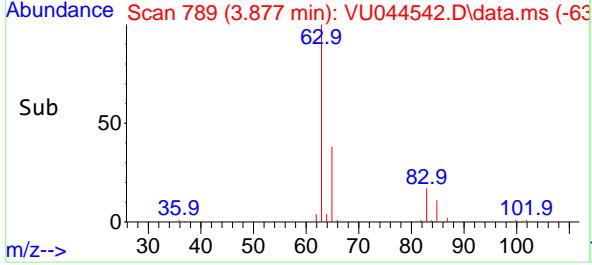
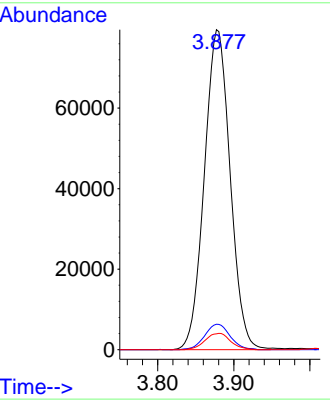
#17  
 1,1-Dichloroethane  
 Concen: 10.22 ug/l  
 RT: 3.877 min Scan# 789  
 Delta R.T. 0.000 min  
 Lab File: VU044542.D  
 Acq: 01 Sep 2021 09:29

Instrument : MSVOA\_U  
 ClientSampled :

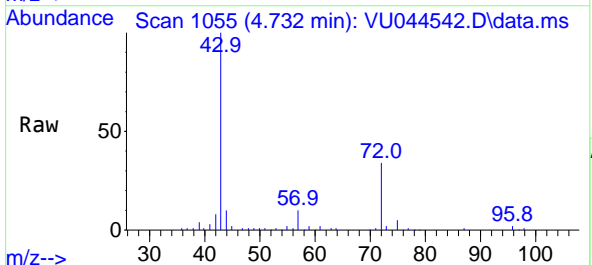


Tgt Ion: 63 Resp: 187296

Ion	Ratio	Lower	Upper
63	100		
98	8.0	4.0	12.0
100	5.0	2.4	7.2

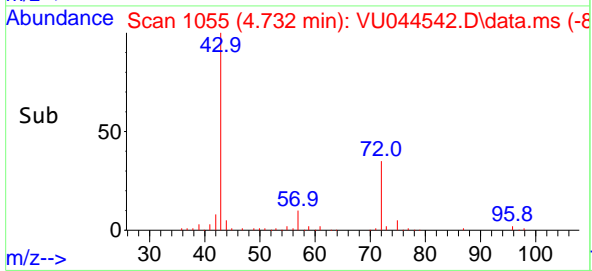
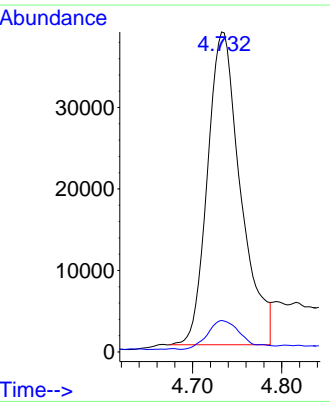


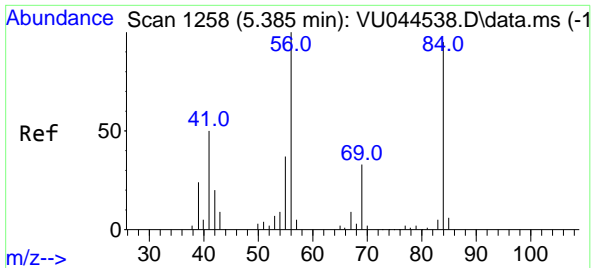
#18  
 2-Butanone  
 Concen: 49.93 ug/l  
 RT: 4.732 min Scan# 1055  
 Delta R.T. 0.000 min  
 Lab File: VU044542.D  
 Acq: 01 Sep 2021 09:29



Tgt Ion: 43 Resp: 99289

Ion	Ratio	Lower	Upper
43	100		
57	9.1	0.0	19.2



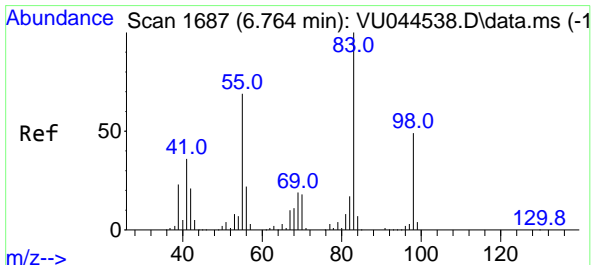
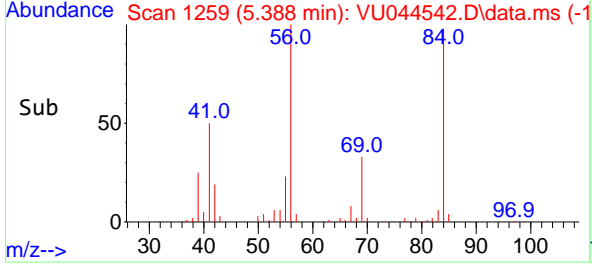
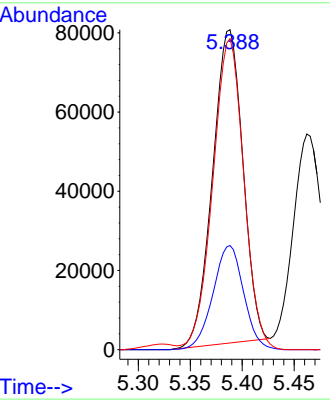
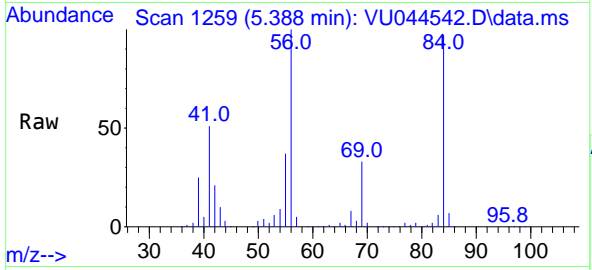


#19  
 Cyclohexane  
 Concen: 9.68 ug/l  
 RT: 5.388 min Scan# 1259  
 Delta R.T. 0.003 min  
 Lab File: VU044542.D  
 Acq: 01 Sep 2021 09:29

Instrument :  
 MSVOA\_U  
 ClientSampled :

Tgt Ion: 56 Resp: 160332

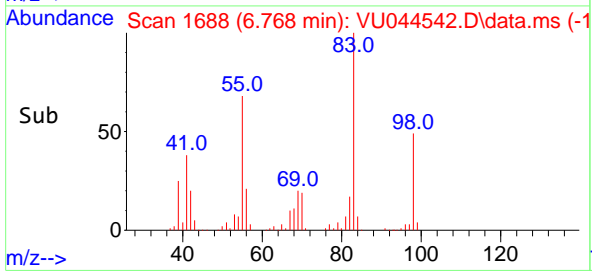
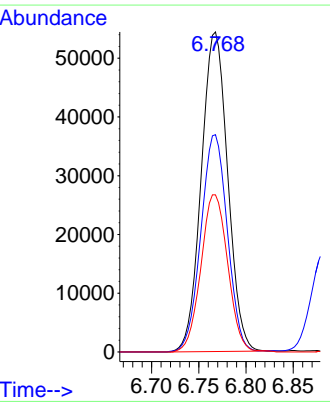
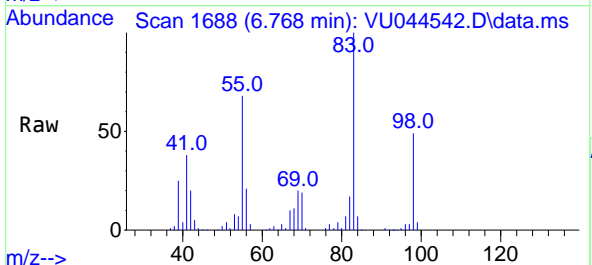
Ion	Ratio	Lower	Upper
56	100		
69	33.8	26.1	39.1
84	99.7	75.0	112.6

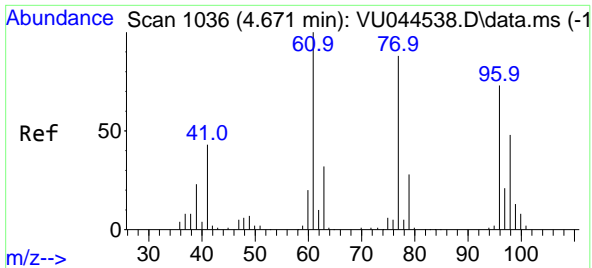


#20  
 Methylcyclohexane  
 Concen: 10.98 ug/l  
 RT: 6.768 min Scan# 1688  
 Delta R.T. 0.003 min  
 Lab File: VU044542.D  
 Acq: 01 Sep 2021 09:29

Tgt Ion: 83 Resp: 105783

Ion	Ratio	Lower	Upper
83	100		
55	67.7	54.8	82.2
98	50.1	40.2	60.4

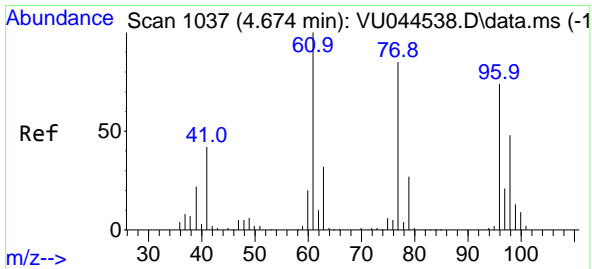
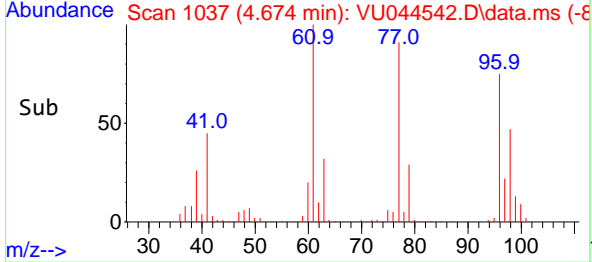
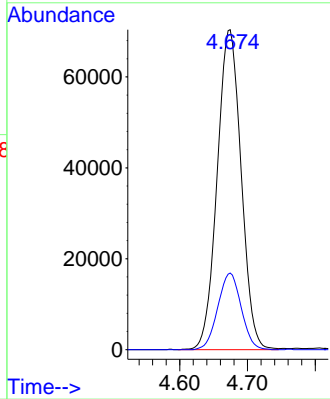
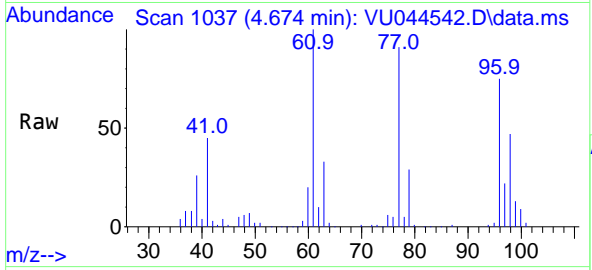




#21  
 2,2-Dichloropropane  
 Concen: 10.34 ug/l  
 RT: 4.674 min Scan# 1037  
 Delta R.T. 0.003 min  
 Lab File: VU044542.D  
 Acq: 01 Sep 2021 09:29

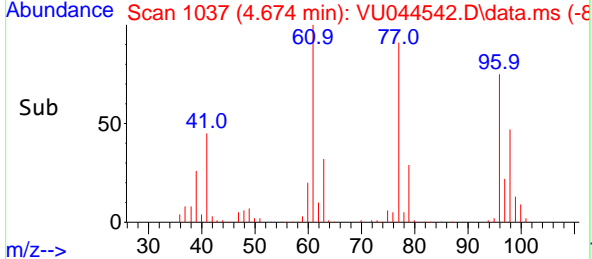
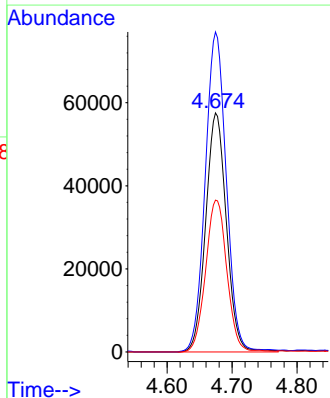
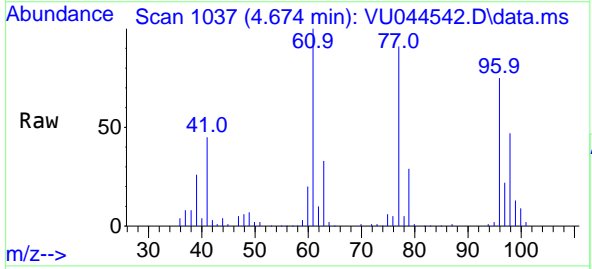
Instrument :  
 MSVOA\_U  
 ClientSampled :

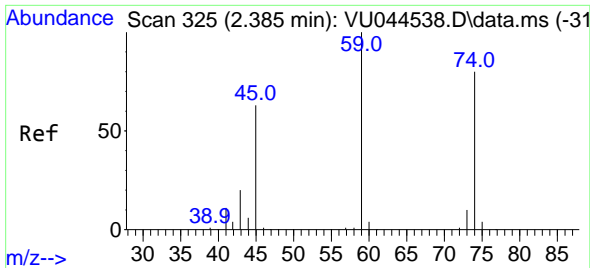
Tgt Ion: 77 Resp: 172717  
 Ion Ratio Lower Upper  
 77 100  
 97 23.3 19.0 28.6



#22  
 cis-1,2-Dichloroethene  
 Concen: 10.27 ug/l  
 RT: 4.674 min Scan# 1037  
 Delta R.T. 0.000 min  
 Lab File: VU044542.D  
 Acq: 01 Sep 2021 09:29

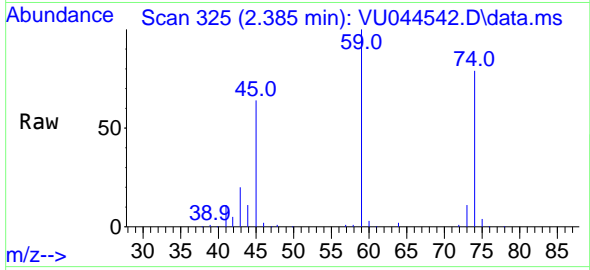
Tgt Ion: 96 Resp: 127705  
 Ion Ratio Lower Upper  
 96 100  
 61 135.5 0.0 334.5  
 98 64.6 32.0 96.2



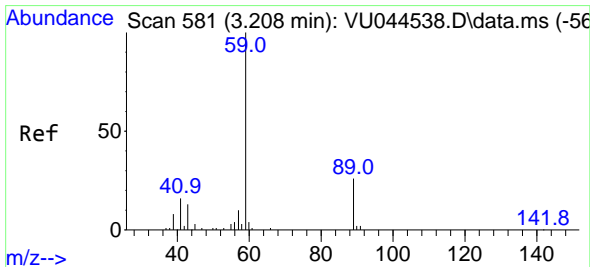
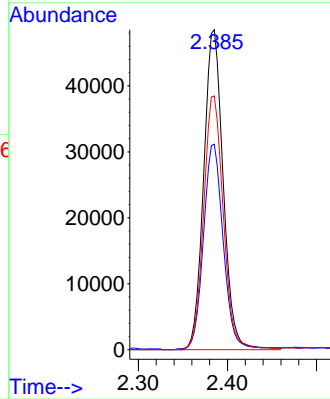
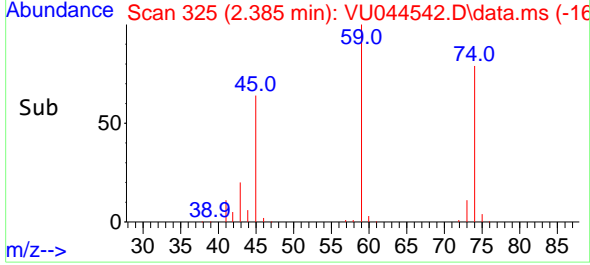


#23  
 Diethyl Ether  
 Concen: 10.29 ug/l  
 RT: 2.385 min Scan# 325  
 Delta R.T. 0.000 min  
 Lab File: VU044542.D  
 Acq: 01 Sep 2021 09:29

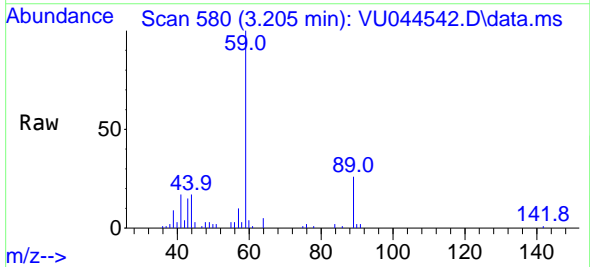
Instrument :  
 MSVOA\_U  
 ClientSampled :



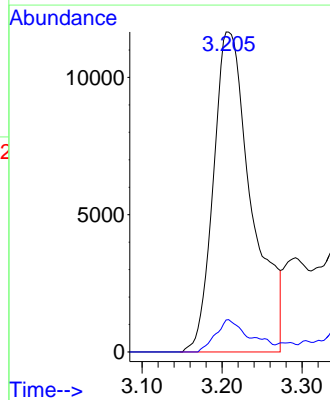
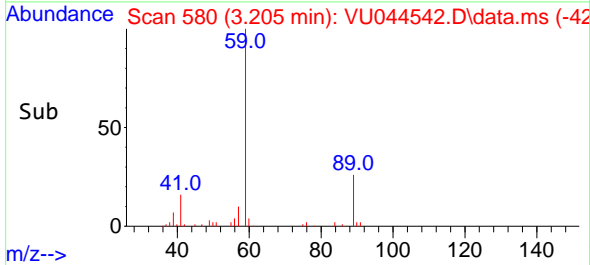
Tgt Ion: 59 Resp: 73672  
 Ion Ratio Lower Upper  
 59 100  
 45 65.4 50.6 76.0  
 74 80.1 63.8 95.8

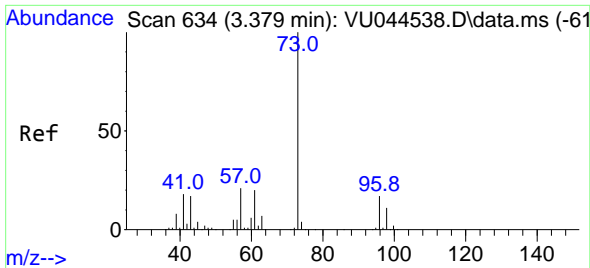


#24  
 tert-Butyl Alcohol  
 Concen: 103.05 ug/l  
 RT: 3.205 min Scan# 580  
 Delta R.T. -0.003 min  
 Lab File: VU044542.D  
 Acq: 01 Sep 2021 09:29



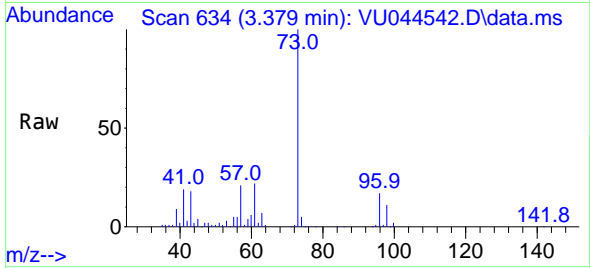
Tgt Ion: 59 Resp: 38715  
 Ion Ratio Lower Upper  
 59 100  
 57 7.2 6.6 9.8



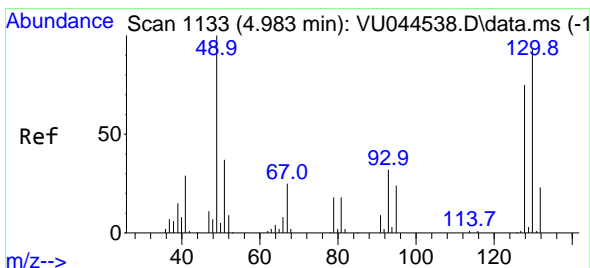
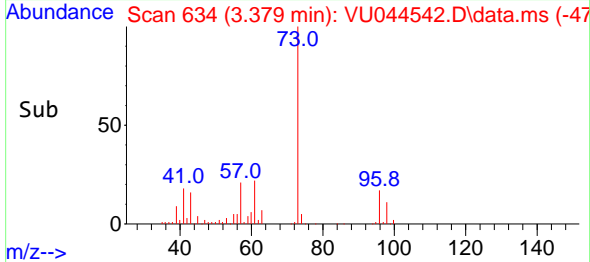
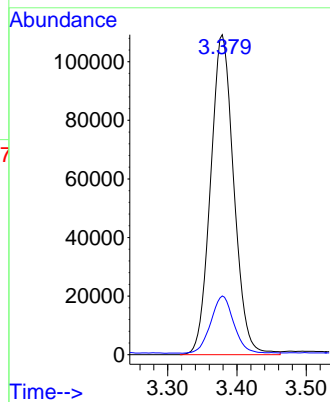


#25  
 Methyl tert-Butyl Ether  
 Concen: 10.24 ug/l  
 RT: 3.379 min Scan# 634  
 Delta R.T. 0.000 min  
 Lab File: VU044542.D  
 Acq: 01 Sep 2021 09:29

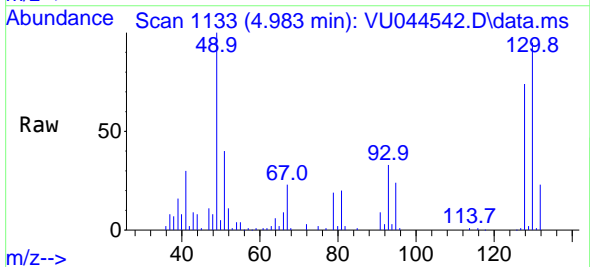
Instrument :  
 MSVOA\_U  
 ClientSampled :



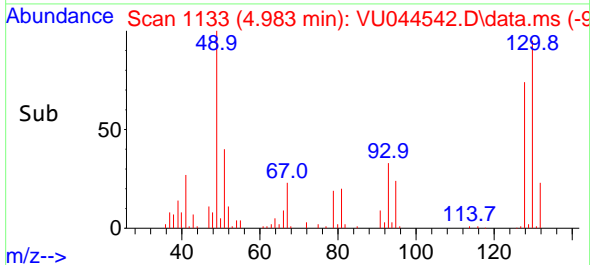
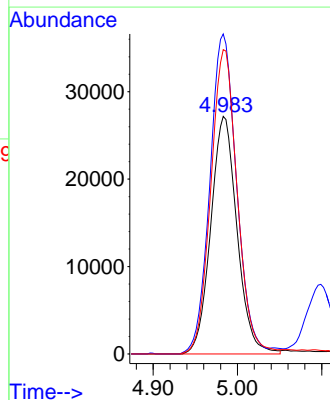
Tgt Ion: 73 Resp: 254688  
 Ion Ratio Lower Upper  
 73 100  
 43 17.6 14.1 21.1



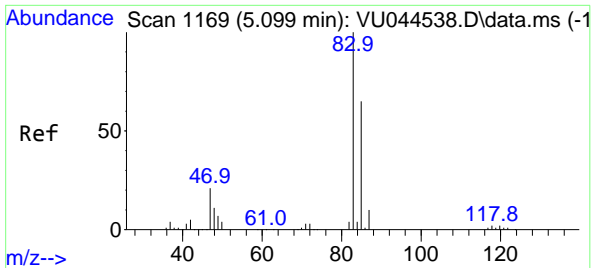
#26  
 Bromochloromethane  
 Concen: 10.02 ug/l  
 RT: 4.983 min Scan# 1133  
 Delta R.T. 0.000 min  
 Lab File: VU044542.D  
 Acq: 01 Sep 2021 09:29



Tgt Ion: 128 Resp: 58763  
 Ion Ratio Lower Upper  
 128 100  
 49 136.8 0.0 272.2  
 130 129.3 101.2 151.8



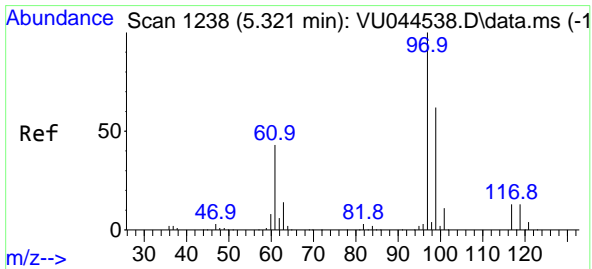
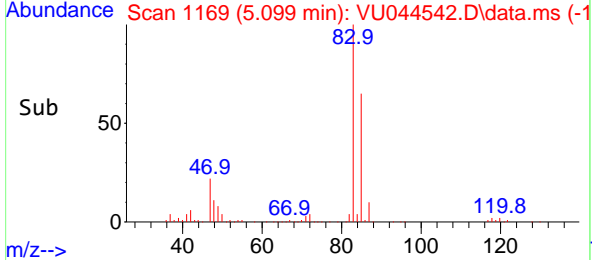
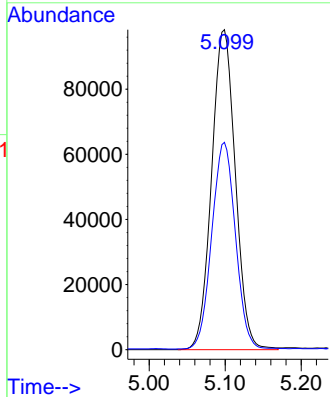
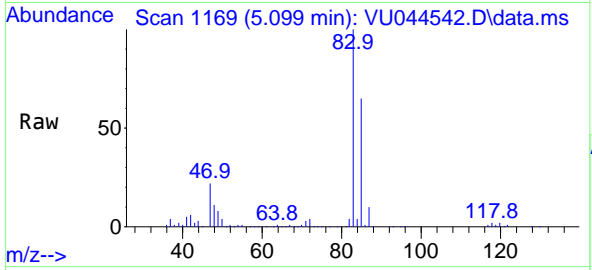




#27  
 Chloroform  
 Concen: 9.96 ug/l  
 RT: 5.099 min Scan# 1169  
 Delta R.T. 0.000 min  
 Lab File: VU044542.D  
 Acq: 01 Sep 2021 09:29

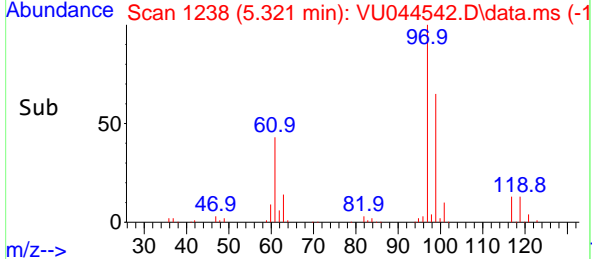
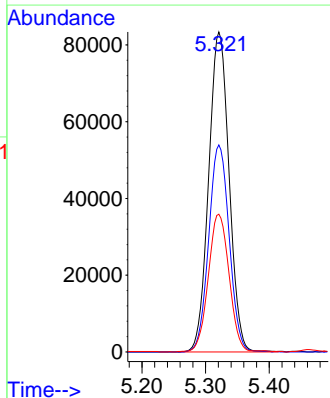
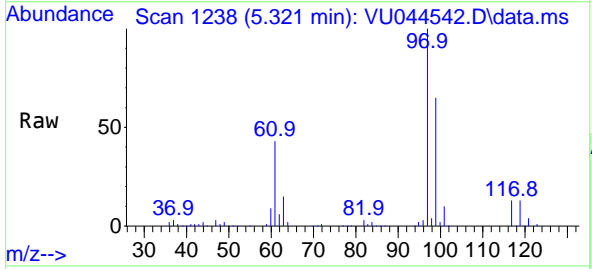
Instrument :  
 MSVOA\_U  
 ClientSampled :

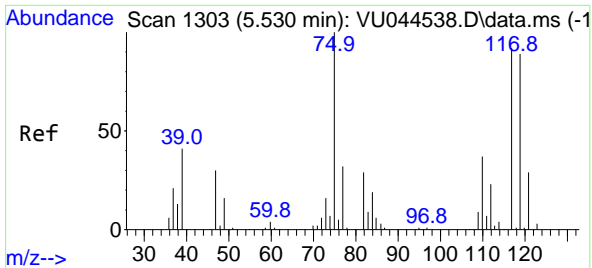
Tgt Ion: 83 Resp: 213124  
 Ion Ratio Lower Upper  
 83 100  
 85 64.6 0.0 129.8



#28  
 1,1,1-Trichloroethane  
 Concen: 10.15 ug/l  
 RT: 5.321 min Scan# 1238  
 Delta R.T. 0.000 min  
 Lab File: VU044542.D  
 Acq: 01 Sep 2021 09:29

Tgt Ion: 97 Resp: 185816  
 Ion Ratio Lower Upper  
 97 100  
 99 65.0 32.0 96.2  
 61 43.9 21.6 64.6



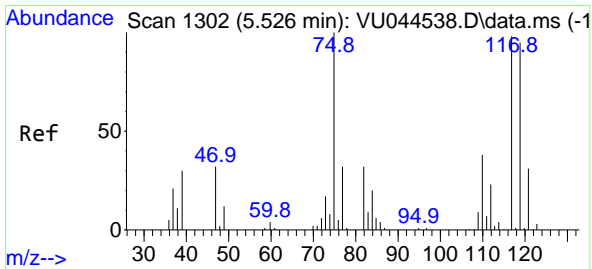
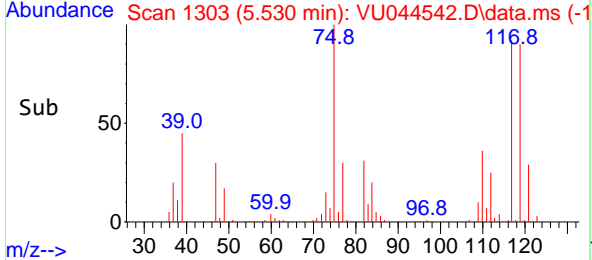
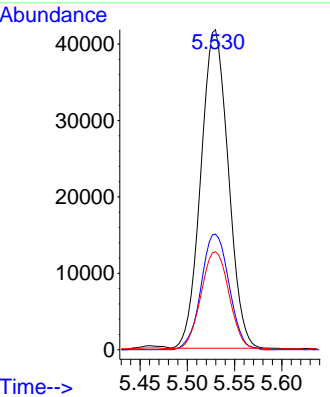
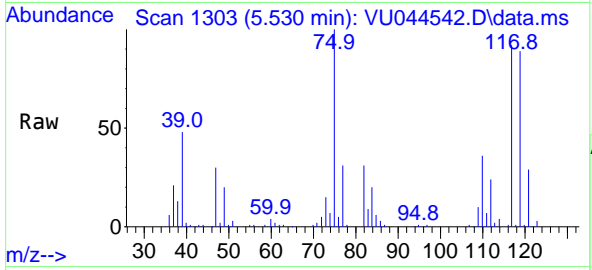


#29  
 1,1-Dichloropropene  
 Concen: 10.45 ug/l  
 RT: 5.530 min Scan# 1303  
 Delta R.T. 0.000 min  
 Lab File: VU044542.D  
 Acq: 01 Sep 2021 09:29

Instrument :  
 MSVOA\_U  
 ClientSampled :

Tgt Ion: 75 Resp: 83995

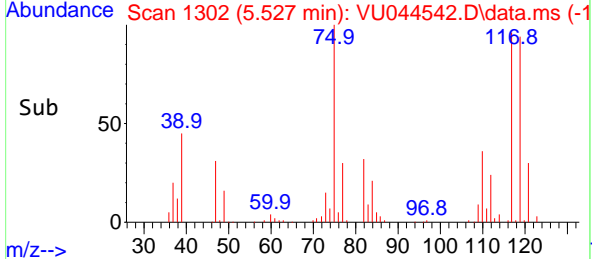
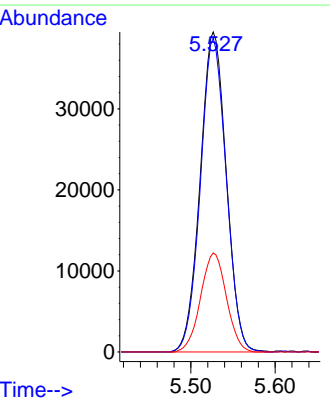
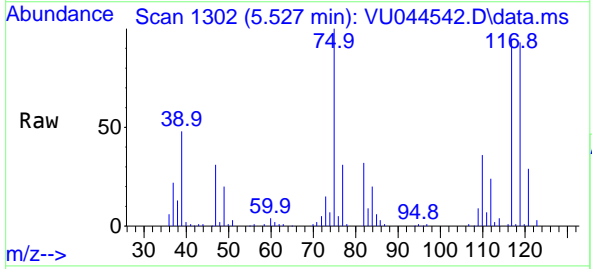
Ion	Ratio	Lower	Upper
75	100		
110	37.2	18.6	55.8
77	31.8	25.9	38.9

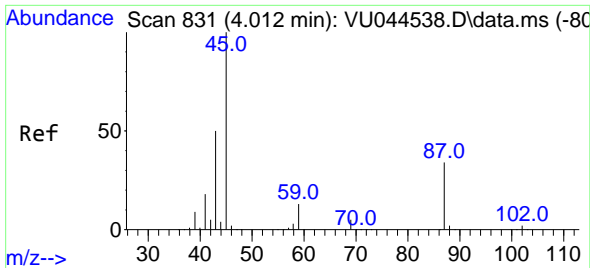


#30  
 Carbon Tetrachloride  
 Concen: 10.65 ug/l  
 RT: 5.527 min Scan# 1302  
 Delta R.T. 0.000 min  
 Lab File: VU044542.D  
 Acq: 01 Sep 2021 09:29

Tgt Ion: 117 Resp: 84975

Ion	Ratio	Lower	Upper
117	100		
119	98.1	77.2	115.8
121	30.9	25.2	37.8

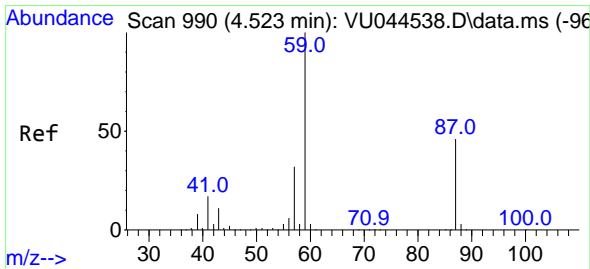
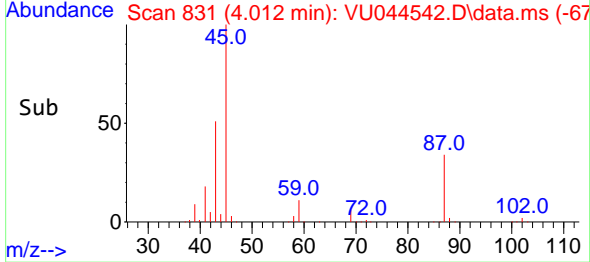
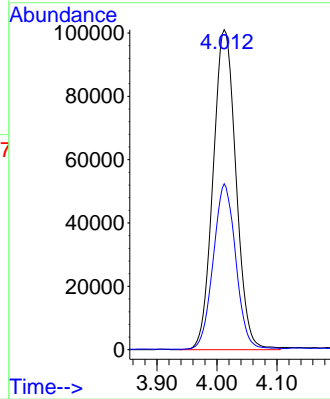
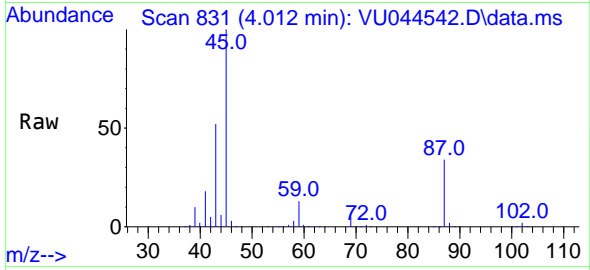




#31  
 Isopropyl Ether  
 Concen: 10.36 ug/l  
 RT: 4.012 min Scan# 831  
 Delta R.T. 0.000 min  
 Lab File: VU044542.D  
 Acq: 01 Sep 2021 09:29

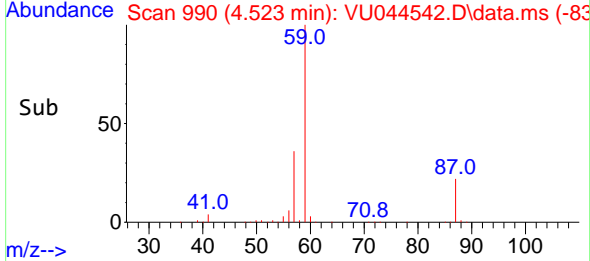
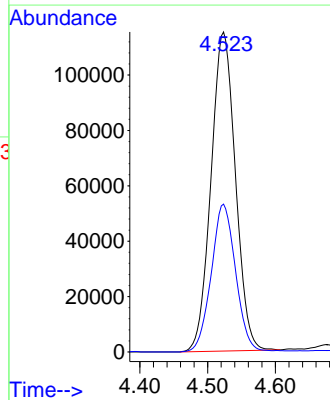
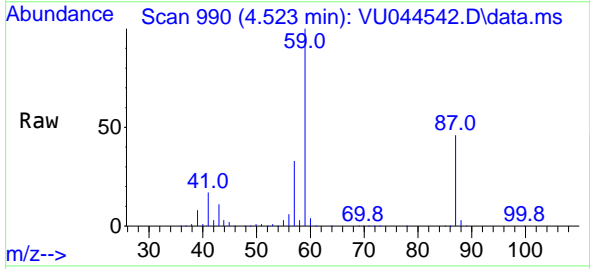
Instrument :  
 MSVOA\_U  
 ClientSampled :

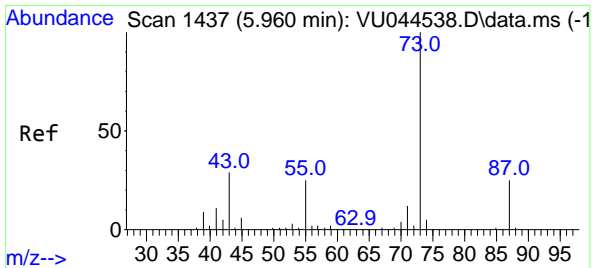
Tgt Ion: 45 Resp: 267915  
 Ion Ratio Lower Upper  
 45 100  
 43 50.8 25.4 76.4



#32  
 Ethyl-t-butyl ether  
 Concen: 10.15 ug/l  
 RT: 4.523 min Scan# 990  
 Delta R.T. 0.000 min  
 Lab File: VU044542.D  
 Acq: 01 Sep 2021 09:29

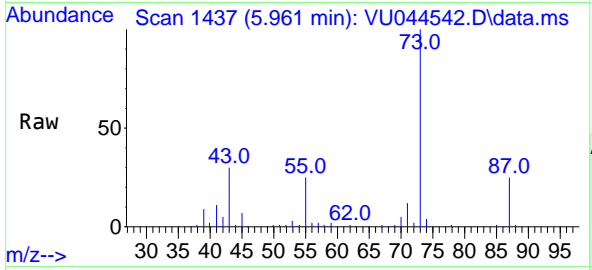
Tgt Ion: 59 Resp: 288152  
 Ion Ratio Lower Upper  
 59 100  
 87 45.7 37.0 55.4





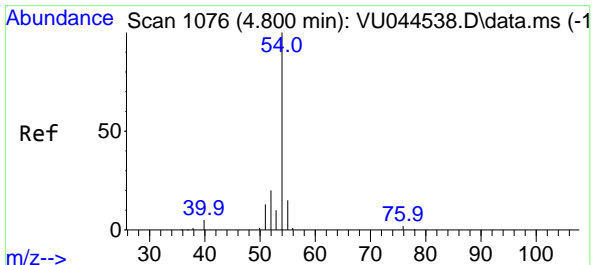
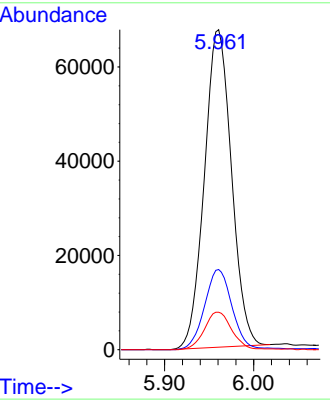
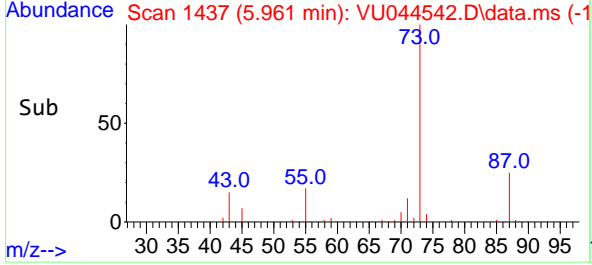
#33  
 Tert-Amyl methyl ether  
 Concen: 10.42 ug/l  
 RT: 5.961 min Scan# 1437  
 Delta R.T. 0.000 min  
 Lab File: VU044542.D  
 Acq: 01 Sep 2021 09:29

Instrument :  
 MSVOA\_U  
 ClientSampled :

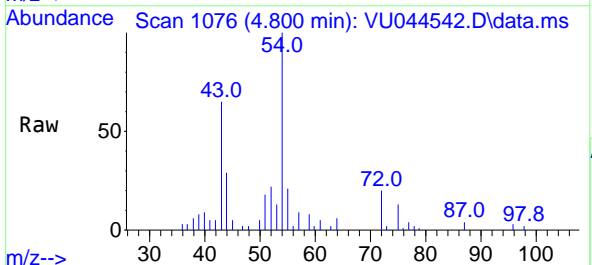


Tgt Ion: 73 Resp: 142584

Ion	Ratio	Lower	Upper
73	100		
87	25.4	19.6	29.4
71	11.8	9.1	13.7

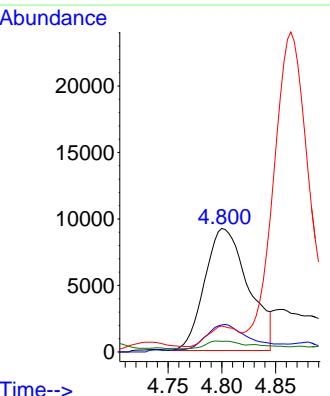
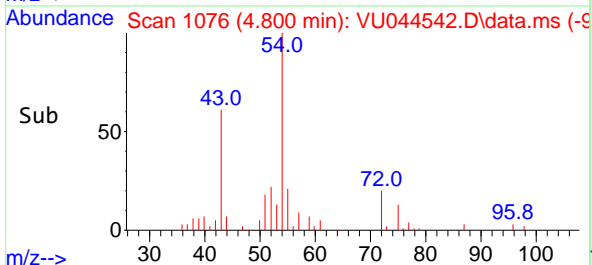


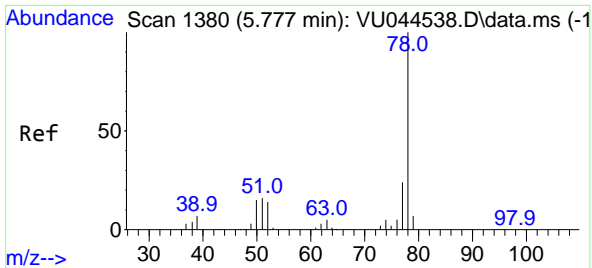
#34  
 Propionitrile  
 Concen: 47.52 ug/l  
 RT: 4.800 min Scan# 1076  
 Delta R.T. 0.000 min  
 Lab File: VU044542.D  
 Acq: 01 Sep 2021 09:29



Tgt Ion: 54 Resp: 26000

Ion	Ratio	Lower	Upper
54	100		
52	21.4	14.5	21.7
55	11.5	8.9	13.3
40	4.6	1.8	2.8

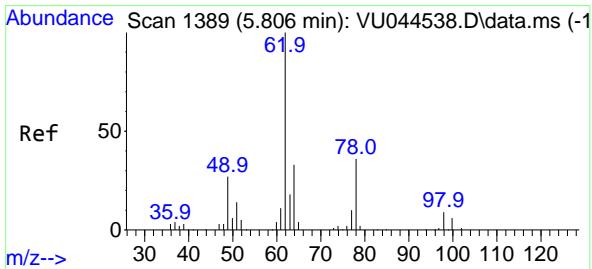
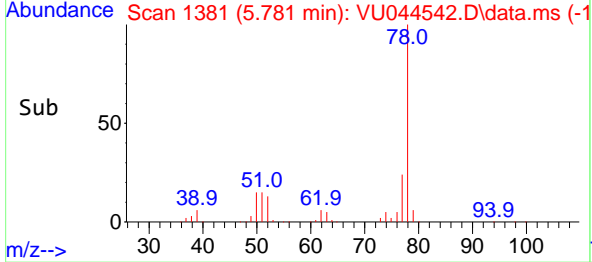
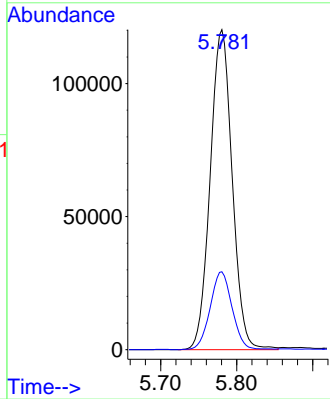
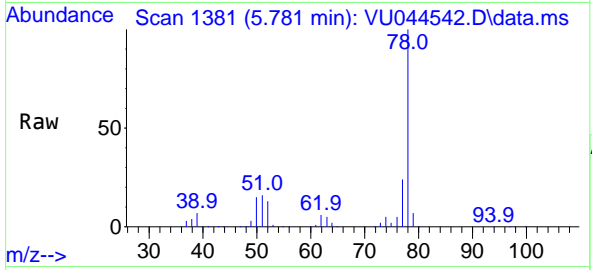




#35  
Benzene  
Concen: 10.47 ug/l  
RT: 5.781 min Scan# 1381  
Delta R.T. 0.003 min  
Lab File: VU044542.D  
Acq: 01 Sep 2021 09:29

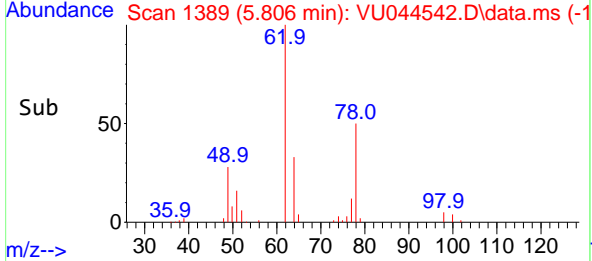
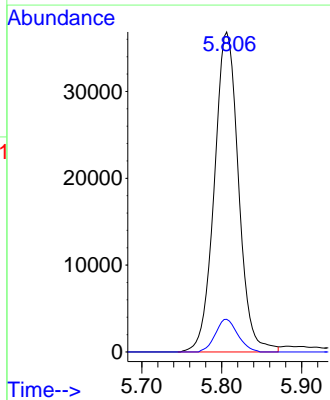
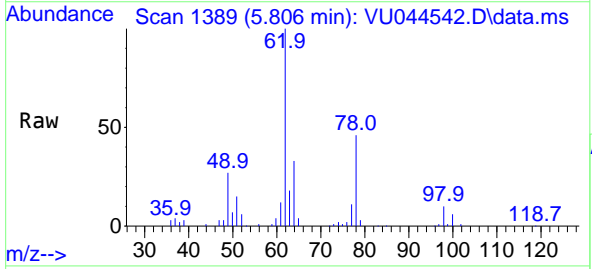
Instrument :  
MSVOA\_U  
ClientSampled :

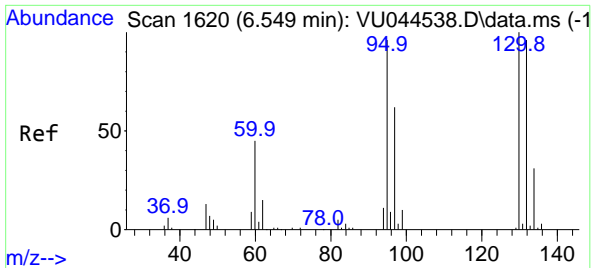
Tgt Ion: 78 Resp: 241818  
Ion Ratio Lower Upper  
78 100  
77 24.3 19.1 28.7



#36  
1,2-Dichloroethane  
Concen: 10.27 ug/l  
RT: 5.806 min Scan# 1389  
Delta R.T. 0.000 min  
Lab File: VU044542.D  
Acq: 01 Sep 2021 09:29

Tgt Ion: 62 Resp: 77402  
Ion Ratio Lower Upper  
62 100  
98 9.5 7.0 10.6

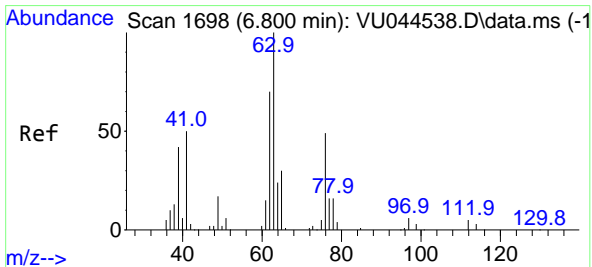
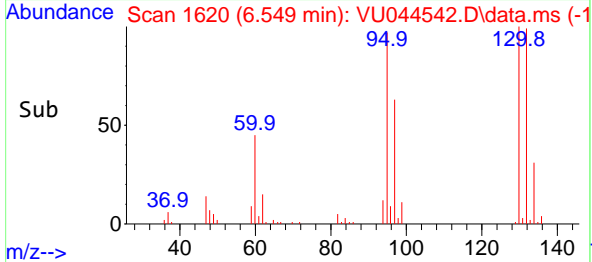
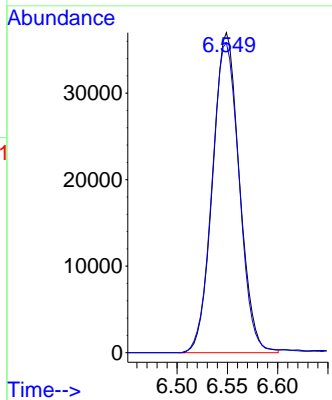
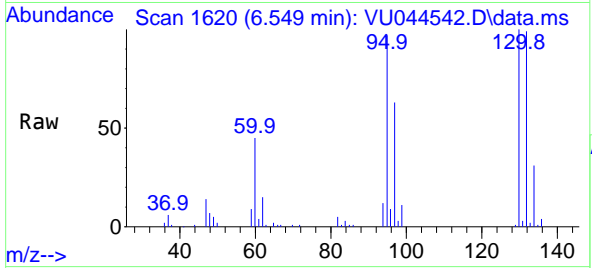




#37  
 Trichloroethene  
 Concen: 10.25 ug/l  
 RT: 6.549 min Scan# 1620  
 Delta R.T. 0.000 min  
 Lab File: VU044542.D  
 Acq: 01 Sep 2021 09:29

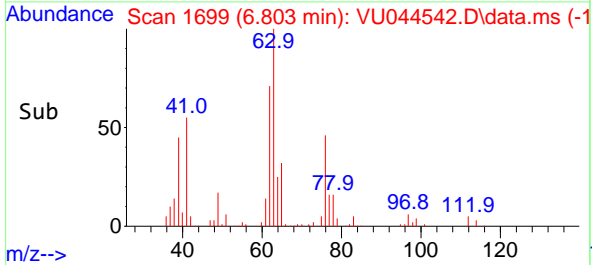
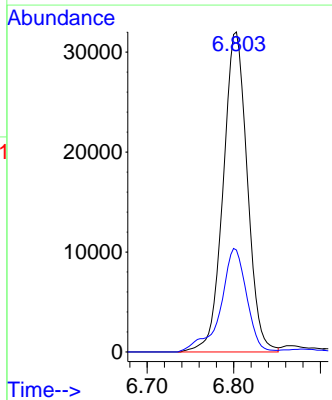
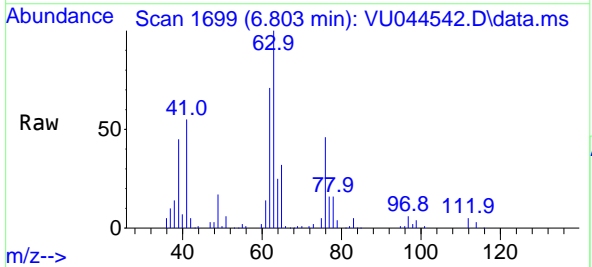
Instrument :  
 MSVOA\_U  
 ClientSampled :

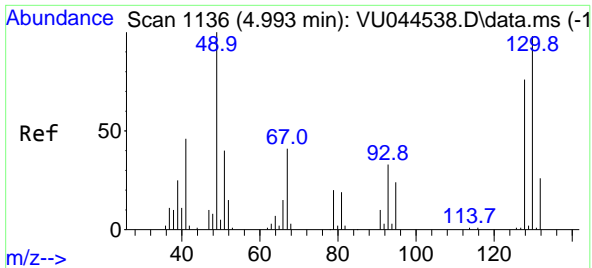
Tgt Ion:130 Resp: 68261  
 Ion Ratio Lower Upper  
 130 100  
 95 96.8 76.9 115.3



#38  
 1,2-Dichloropropane  
 Concen: 10.63 ug/l  
 RT: 6.803 min Scan# 1699  
 Delta R.T. 0.003 min  
 Lab File: VU044542.D  
 Acq: 01 Sep 2021 09:29

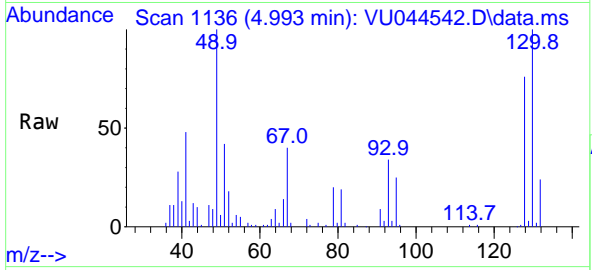
Tgt Ion: 63 Resp: 61831  
 Ion Ratio Lower Upper  
 63 100  
 65 31.8 24.3 36.5





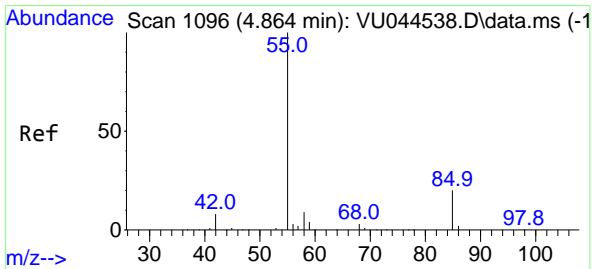
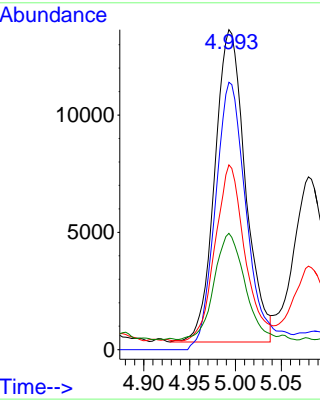
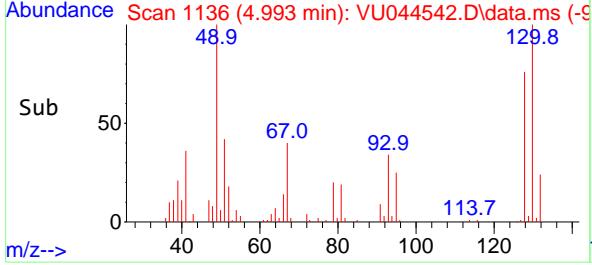
#39  
 Methacrylonitrile  
 Concen: 10.07 ug/l  
 RT: 4.993 min Scan# 1136  
 Delta R.T. 0.000 min  
 Lab File: VU044542.D  
 Acq: 01 Sep 2021 09:29

Instrument :  
 MSVOA\_U  
 ClientSampled :

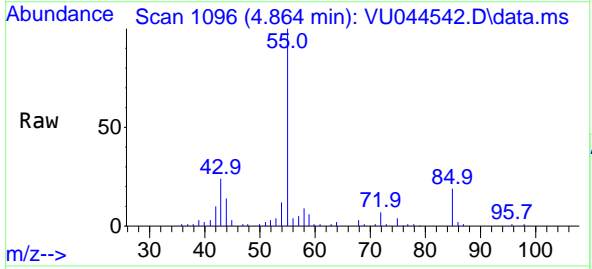


Tgt Ion: 41 Resp: 30872

Ion	Ratio	Lower	Upper
41	100		
67	89.4	72.1	108.1
39	54.8	40.3	60.5
52	33.2	27.8	41.6

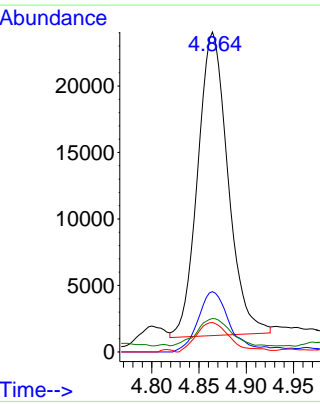
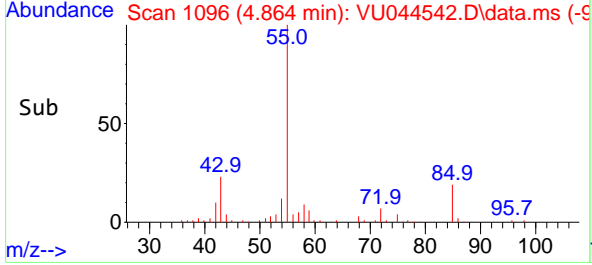


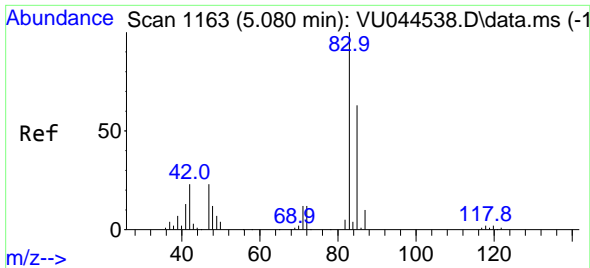
#40  
 Methyl acrylate  
 Concen: 10.17 ug/l  
 RT: 4.864 min Scan# 1096  
 Delta R.T. 0.000 min  
 Lab File: VU044542.D  
 Acq: 01 Sep 2021 09:29



Tgt Ion: 55 Resp: 50769

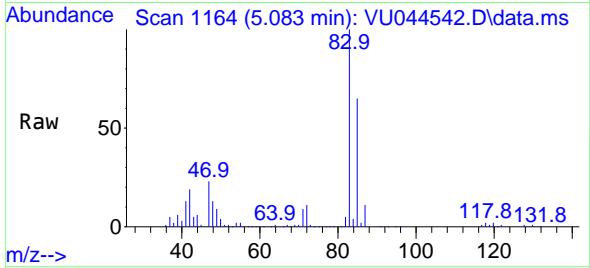
Ion	Ratio	Lower	Upper
55	100		
85	20.5	17.4	26.0
58	10.9	8.3	12.5
42	9.5	7.4	11.0





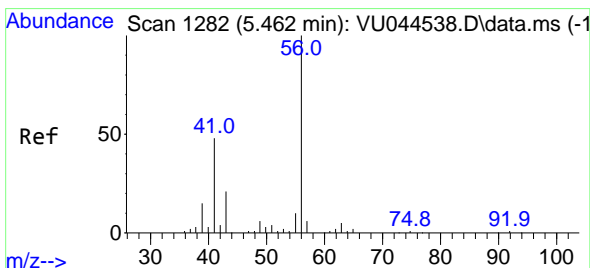
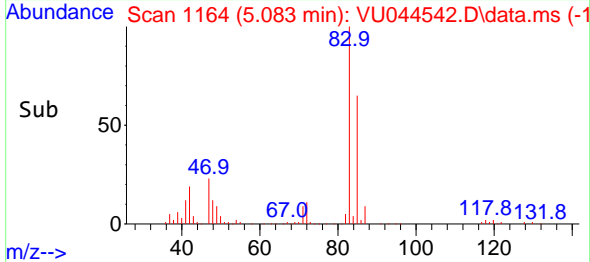
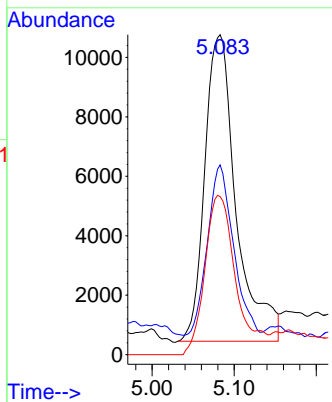
#41  
 Tetrahydrofuran  
 Concen: 18.36 ug/l  
 RT: 5.083 min Scan# 1164  
 Delta R.T. 0.003 min  
 Lab File: VU044542.D  
 Acq: 01 Sep 2021 09:29

Instrument :  
 MSVOA\_U  
 ClientSampled :

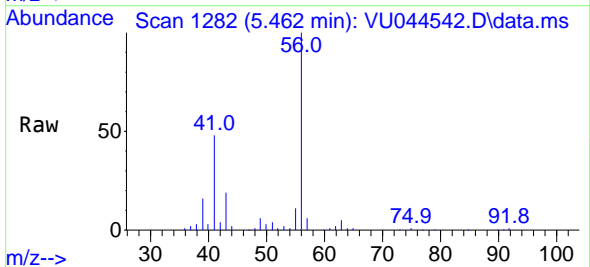


Tgt Ion: 42 Resp: 27438

Ion	Ratio	Lower	Upper
42	100		
72	45.6	42.6	63.8
71	51.4	43.8	65.6

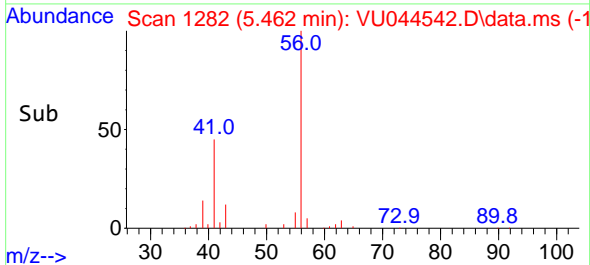
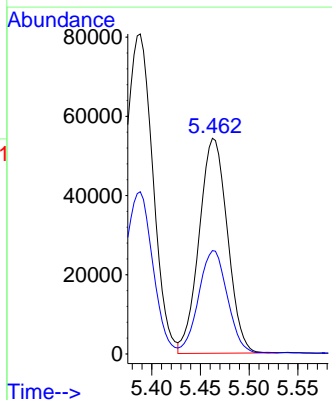


#42  
 1-Chlorobutane  
 Concen: 10.58 ug/l  
 RT: 5.462 min Scan# 1282  
 Delta R.T. 0.000 min  
 Lab File: VU044542.D  
 Acq: 01 Sep 2021 09:29

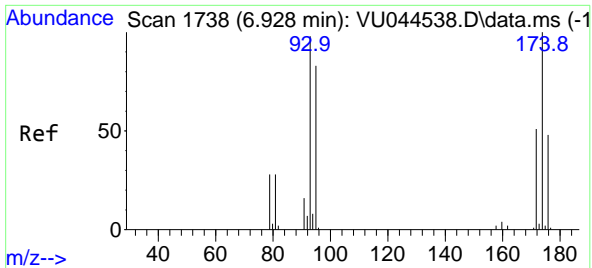


Tgt Ion: 56 Resp: 109460

Ion	Ratio	Lower	Upper
56	100		
41	47.7	24.3	72.9

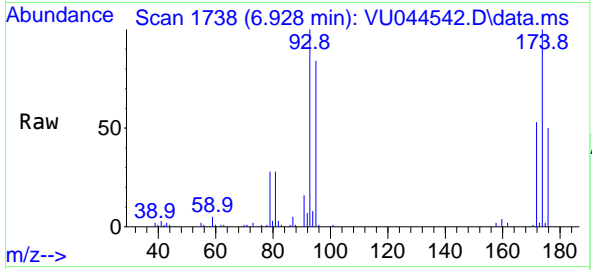




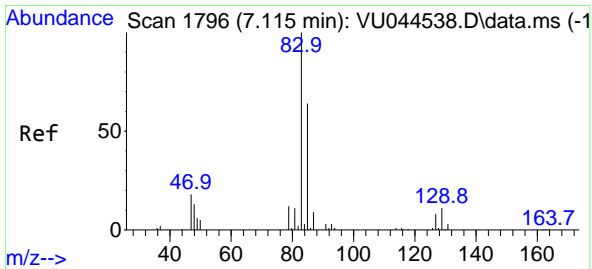
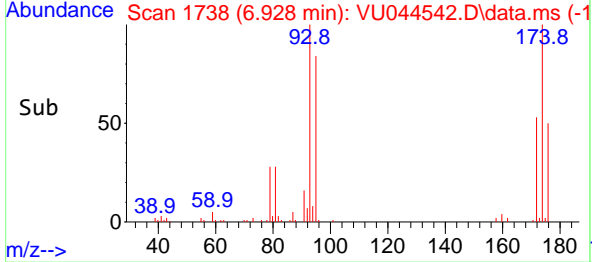
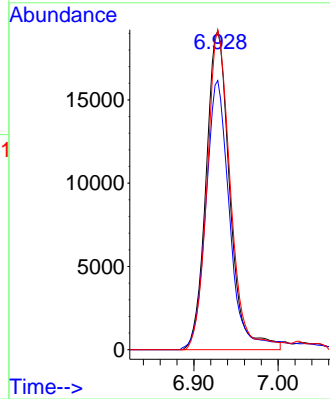


#43  
 Dibromomethane  
 Concen: 10.50 ug/l  
 RT: 6.928 min Scan# 1738  
 Delta R.T. 0.000 min  
 Lab File: VU044542.D  
 Acq: 01 Sep 2021 09:29

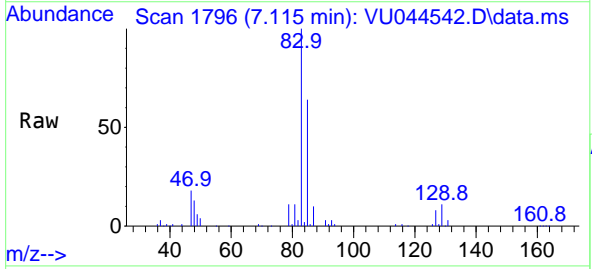
Instrument :  
 MSVOA\_U  
 ClientSampled :



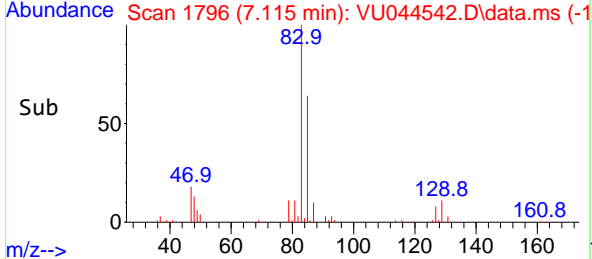
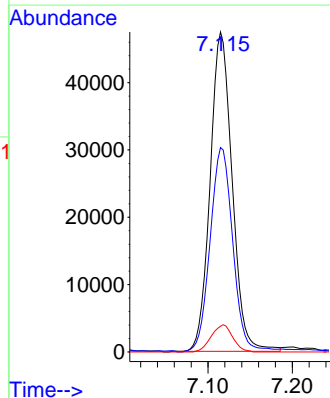
Tgt Ion: 93 Resp: 37386  
 Ion Ratio Lower Upper  
 93 100  
 95 83.8 68.2 102.4  
 174 99.4 80.0 120.0

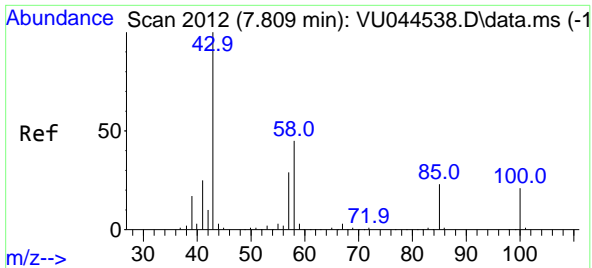


#44  
 Bromodichloromethane  
 Concen: 10.48 ug/l  
 RT: 7.115 min Scan# 1796  
 Delta R.T. 0.000 min  
 Lab File: VU044542.D  
 Acq: 01 Sep 2021 09:29



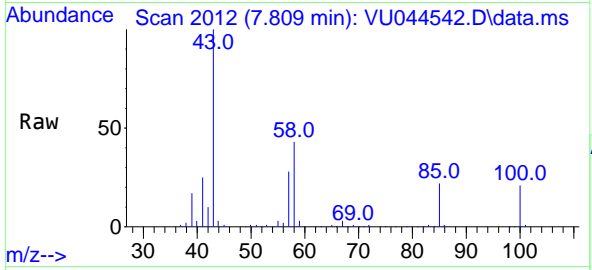
Tgt Ion: 83 Resp: 86172  
 Ion Ratio Lower Upper  
 83 100  
 85 64.0 51.4 77.2  
 127 8.1 7.2 10.8



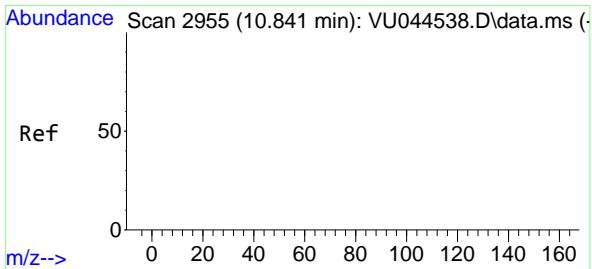
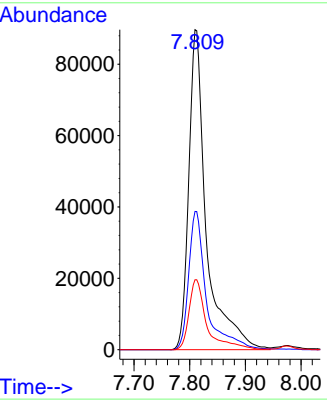
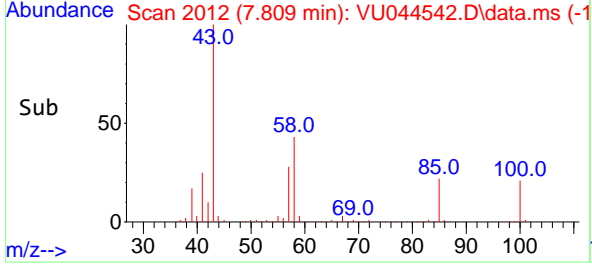


#45  
 4-Methyl-2-Pentanone  
 Concen: 54.06 ug/l  
 RT: 7.809 min Scan# 2012  
 Delta R.T. 0.000 min  
 Lab File: VU044542.D  
 Acq: 01 Sep 2021 09:29

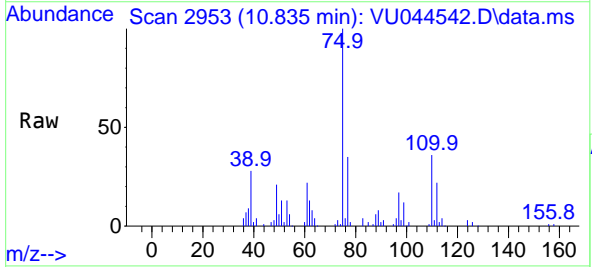
Instrument :  
 MSVOA\_U  
 ClientSampled :



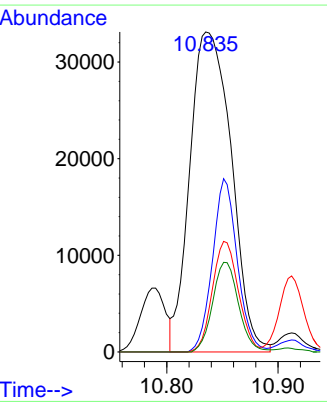
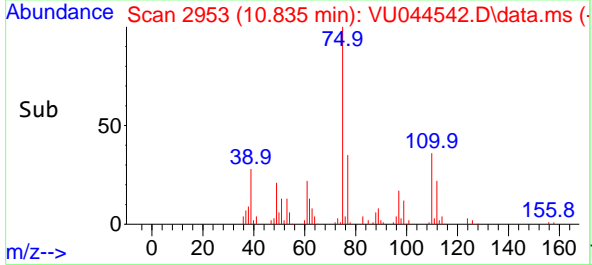
Tgt Ion: 43 Resp: 197124  
 Ion Ratio Lower Upper  
 43 100  
 58 44.0 22.4 67.3  
 85 22.3 18.2 27.4

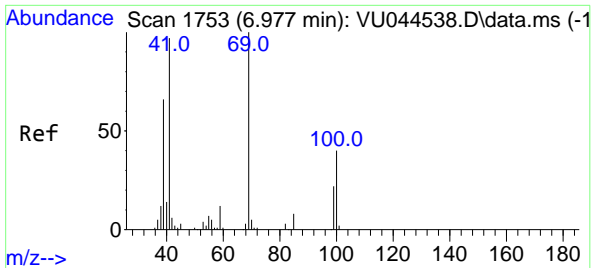


#46  
 t-1,4-Dichloro-2-butene  
 Concen: 55.63 ug/l  
 RT: 10.835 min Scan# 2953  
 Delta R.T. -0.006 min  
 Lab File: VU044542.D  
 Acq: 01 Sep 2021 09:29



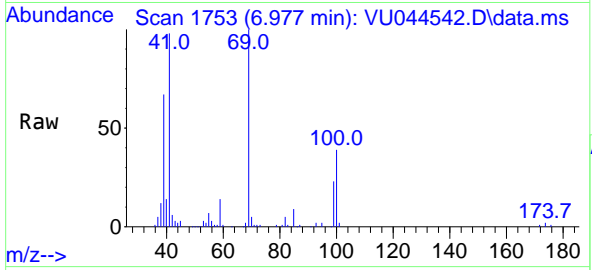
Tgt Ion: 75 Resp: 85649  
 Ion Ratio Lower Upper  
 75 100  
 53 32.4 64.0 96.0#  
 89 21.8 42.1 63.1#  
 88 17.5 33.3 49.9#





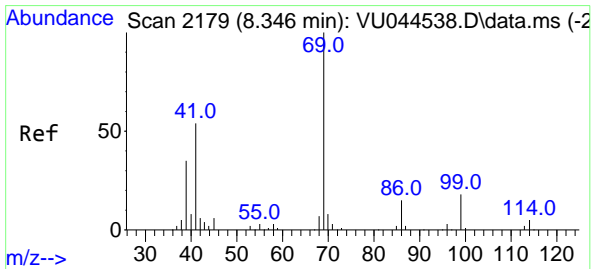
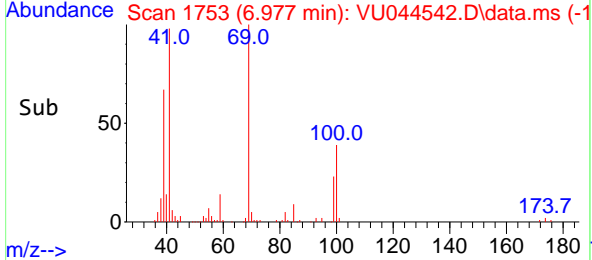
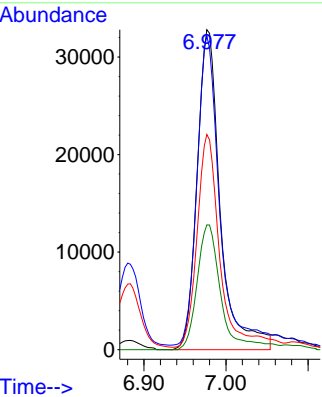
#47  
 Methyl methacrylate  
 Concen: 21.77 ug/l  
 RT: 6.977 min Scan# 1753  
 Delta R.T. 0.000 min  
 Lab File: VU044542.D  
 Acq: 01 Sep 2021 09:29

Instrument :  
 MSVOA\_U  
 ClientSampled :

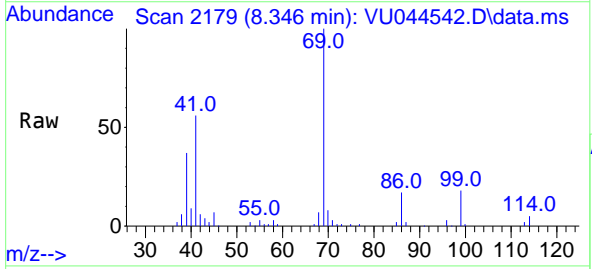


Tgt Ion: 69 Resp: 64427

Ion	Ratio	Lower	Upper
69	100		
41	100.6	0.0	191.8
39	62.1	52.4	78.6
100	40.4	33.3	49.9

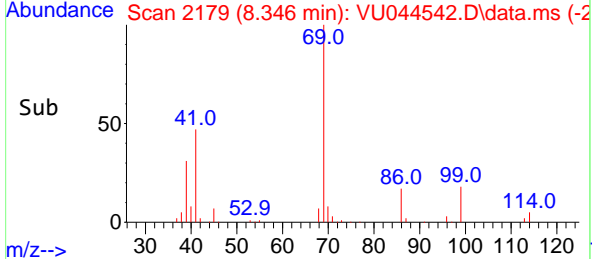
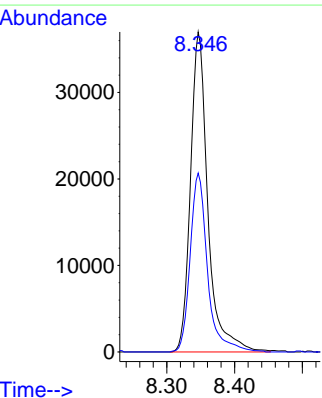


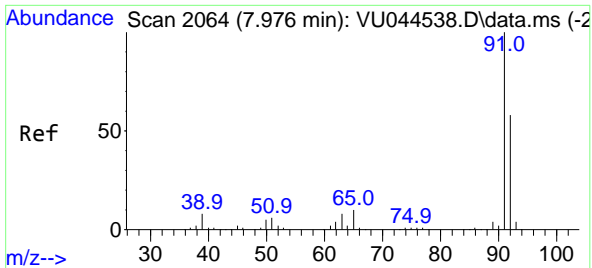
#48  
 Ethyl methacrylate  
 Concen: 10.96 ug/l  
 RT: 8.346 min Scan# 2179  
 Delta R.T. 0.000 min  
 Lab File: VU044542.D  
 Acq: 01 Sep 2021 09:29



Tgt Ion: 69 Resp: 65811

Ion	Ratio	Lower	Upper
69	100		
41	56.0	27.1	81.2

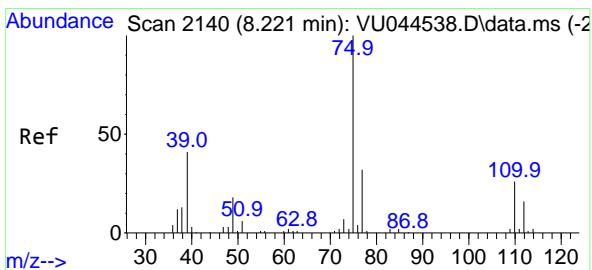
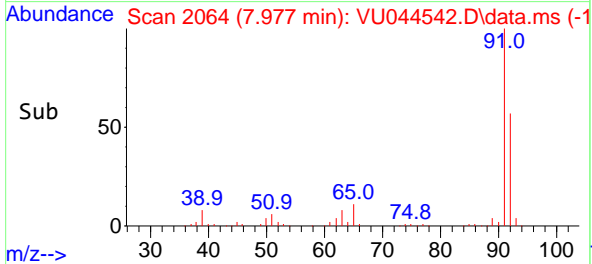
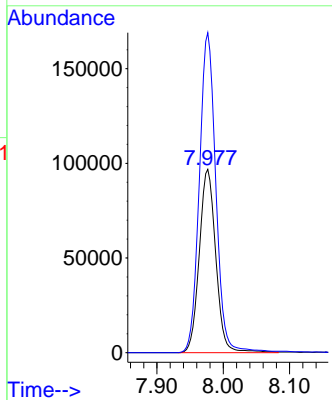
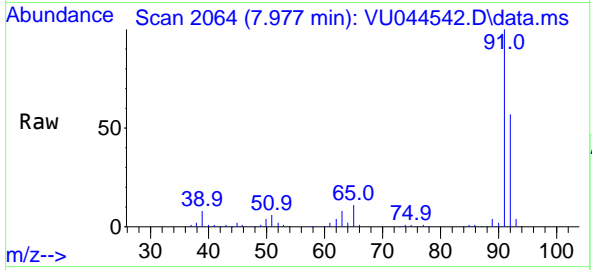




#49  
 Toluene  
 Concen: 11.02 ug/l  
 RT: 7.977 min Scan# 2064  
 Delta R.T. 0.000 min  
 Lab File: VU044542.D  
 Acq: 01 Sep 2021 09:29

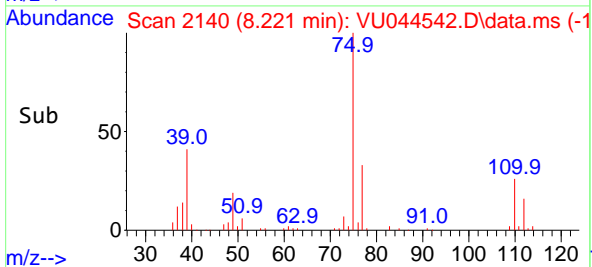
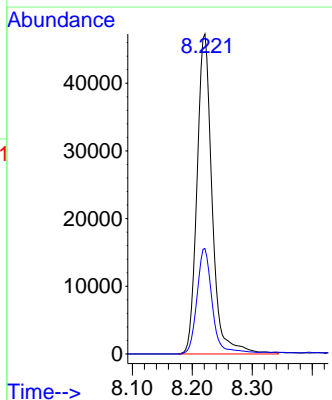
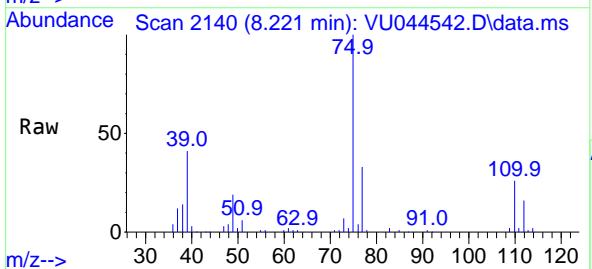
Instrument :  
 MSVOA\_U  
 ClientSampled :

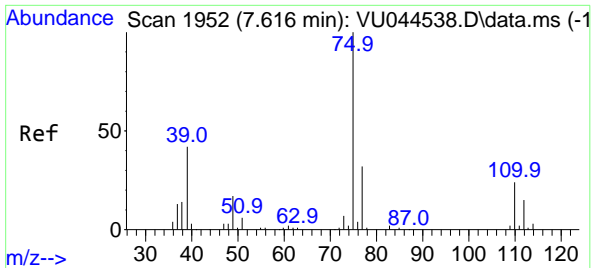
Tgt Ion: 92 Resp: 167962  
 Ion Ratio Lower Upper  
 92 100  
 91 174.6 139.4 209.0



#50  
 t-1,3-Dichloropropene  
 Concen: 11.51 ug/l  
 RT: 8.221 min Scan# 2140  
 Delta R.T. 0.000 min  
 Lab File: VU044542.D  
 Acq: 01 Sep 2021 09:29

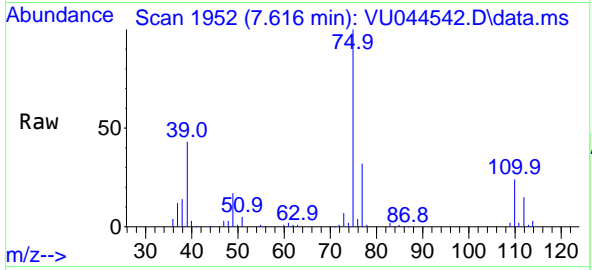
Tgt Ion: 75 Resp: 83158  
 Ion Ratio Lower Upper  
 75 100  
 77 33.0 25.3 37.9



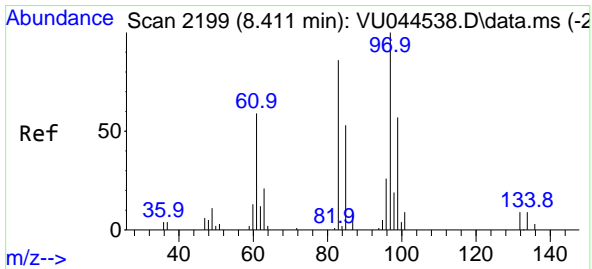
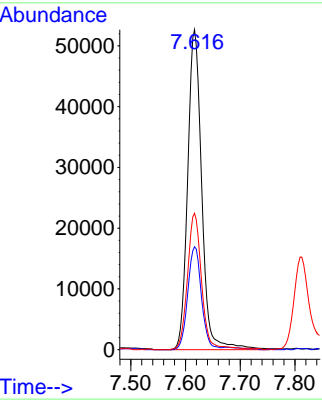
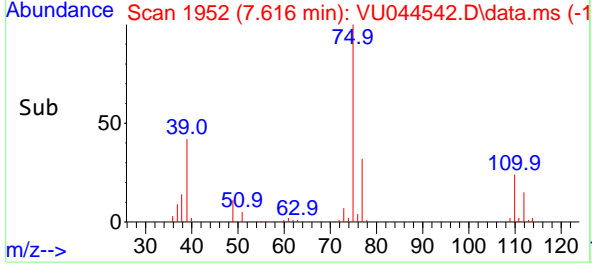


#51  
 cis-1,3-Dichloropropene  
 Concen: 11.45 ug/l  
 RT: 7.616 min Scan# 1952  
 Delta R.T. 0.000 min  
 Lab File: VU044542.D  
 Acq: 01 Sep 2021 09:29

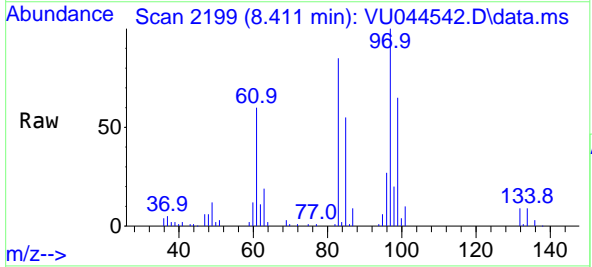
Instrument :  
 MSVOA\_U  
 ClientSampled :



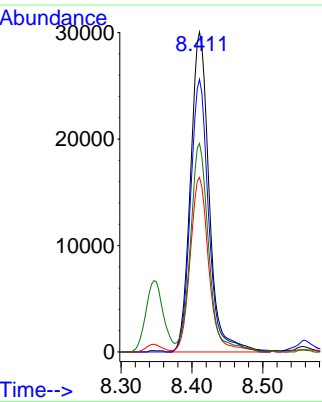
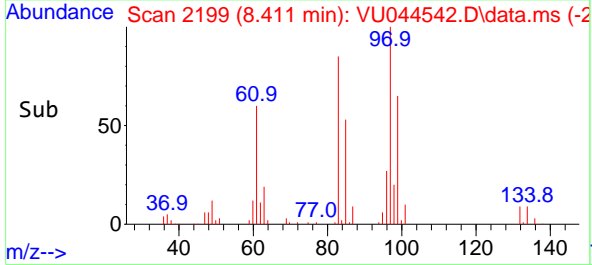
Tgt Ion: 75 Resp: 94279  
 Ion Ratio Lower Upper  
 75 100  
 77 32.2 25.4 38.2  
 39 42.6 33.9 50.9

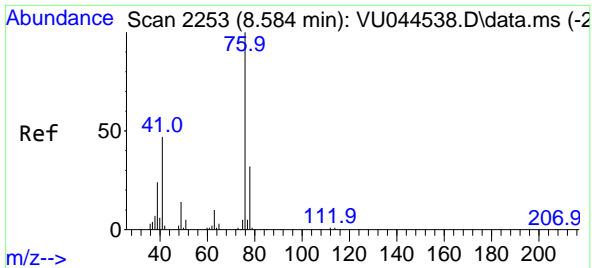


#52  
 1,1,2-Trichloroethane  
 Concen: 10.83 ug/l  
 RT: 8.411 min Scan# 2199  
 Delta R.T. 0.000 min  
 Lab File: VU044542.D  
 Acq: 01 Sep 2021 09:29



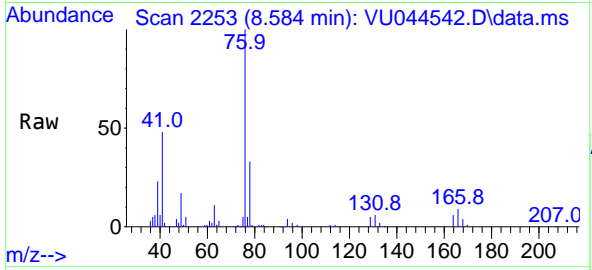
Tgt Ion: 97 Resp: 54899  
 Ion Ratio Lower Upper  
 97 100  
 83 85.2 68.4 102.6  
 85 54.2 43.4 65.0  
 99 64.8 49.8 74.8



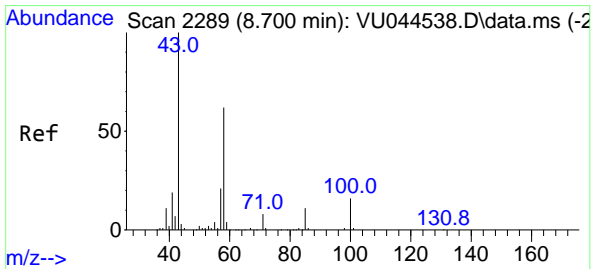
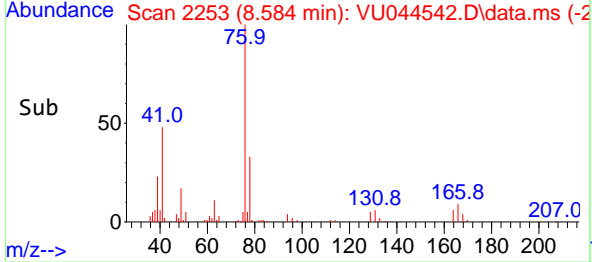
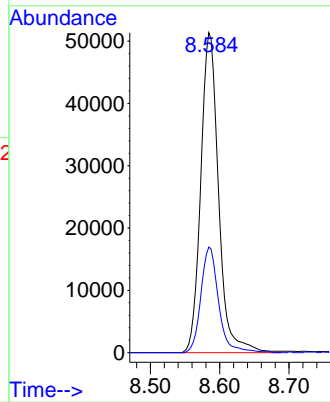


#53  
 1,3-Dichloropropane  
 Concen: 10.55 ug/l  
 RT: 8.584 min Scan# 2253  
 Delta R.T. 0.000 min  
 Lab File: VU044542.D  
 Acq: 01 Sep 2021 09:29

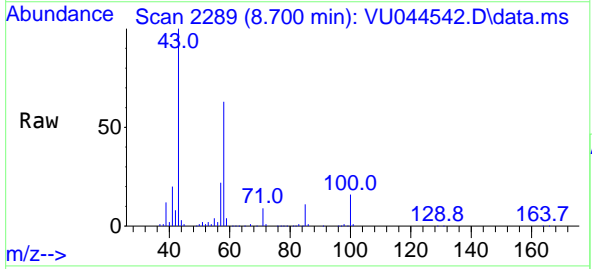
Instrument :  
 MSVOA\_U  
 ClientSampled :



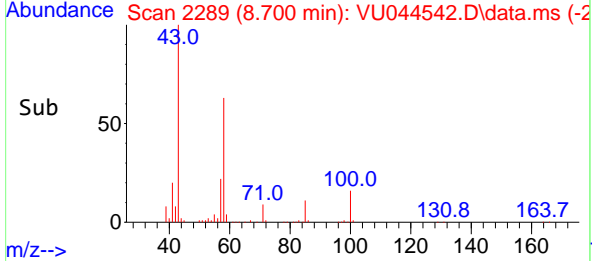
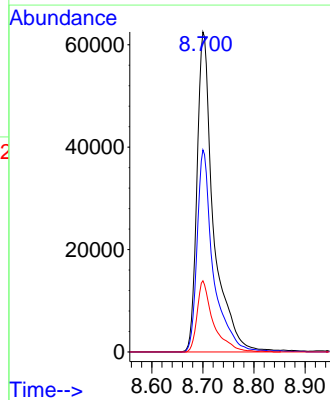
Tgt Ion: 76 Resp: 91701  
 Ion Ratio Lower Upper  
 76 100  
 78 32.7 25.8 38.8

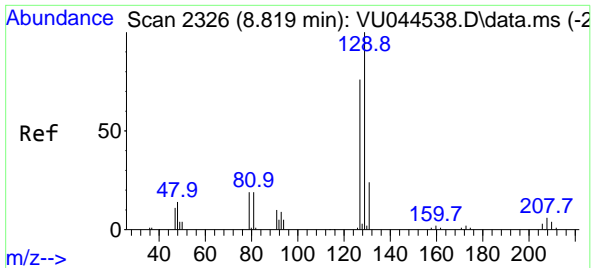


#54  
 2-Hexanone  
 Concen: 54.09 ug/l  
 RT: 8.700 min Scan# 2289  
 Delta R.T. 0.000 min  
 Lab File: VU044542.D  
 Acq: 01 Sep 2021 09:29



Tgt Ion: 43 Resp: 140268  
 Ion Ratio Lower Upper  
 43 100  
 58 61.8 40.6 80.6  
 57 21.8 0.9 40.9

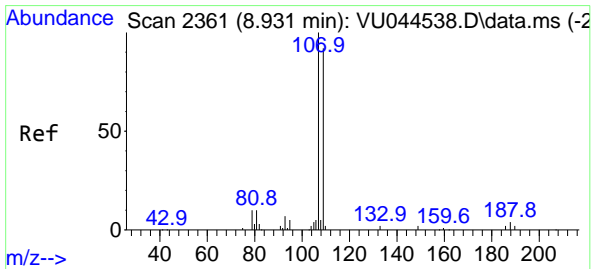
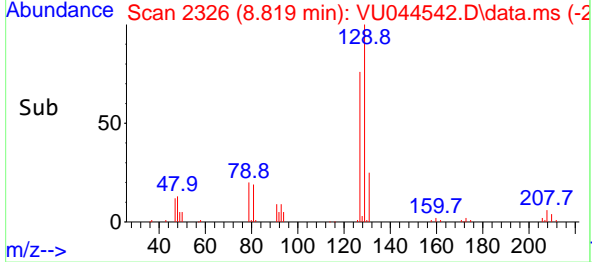
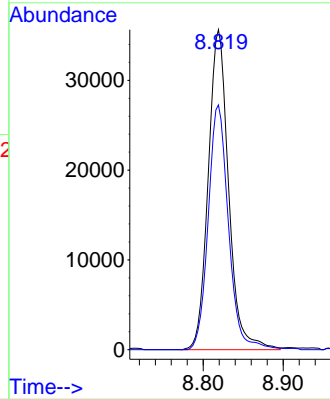
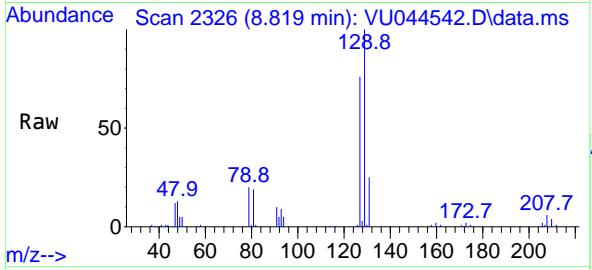




#55  
 Dibromochloromethane  
 Concen: 11.00 ug/l  
 RT: 8.819 min Scan# 2326  
 Delta R.T. 0.000 min  
 Lab File: VU044542.D  
 Acq: 01 Sep 2021 09:29

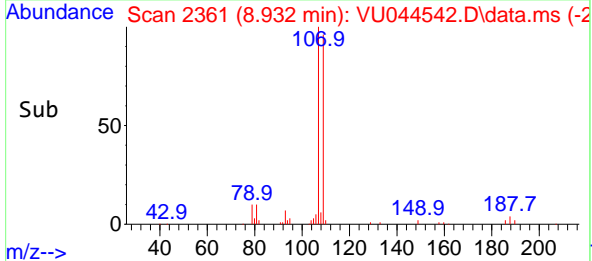
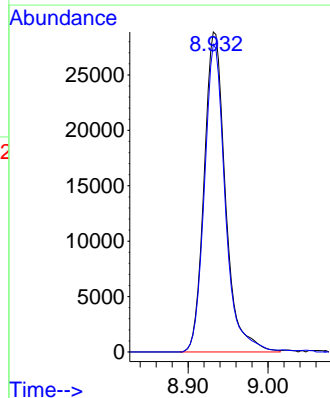
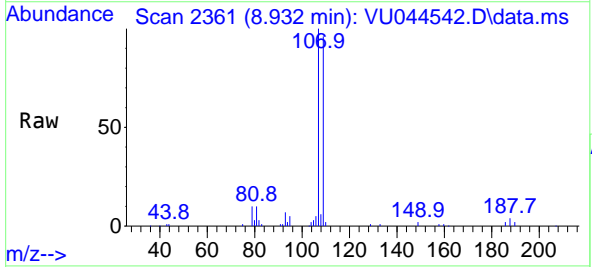
Instrument :  
 MSVOA\_U  
 ClientSampled :

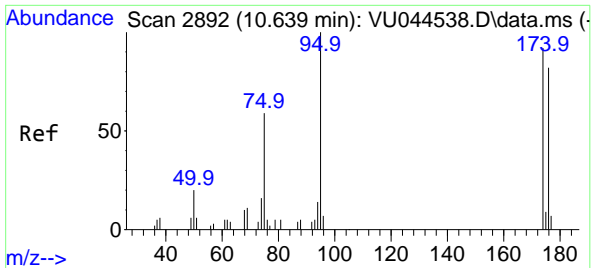
Tgt Ion:129 Resp: 63161  
 Ion Ratio Lower Upper  
 129 100  
 127 76.0 60.8 91.2



#56  
 1,2-Dibromoethane  
 Concen: 10.76 ug/l  
 RT: 8.932 min Scan# 2361  
 Delta R.T. 0.000 min  
 Lab File: VU044542.D  
 Acq: 01 Sep 2021 09:29

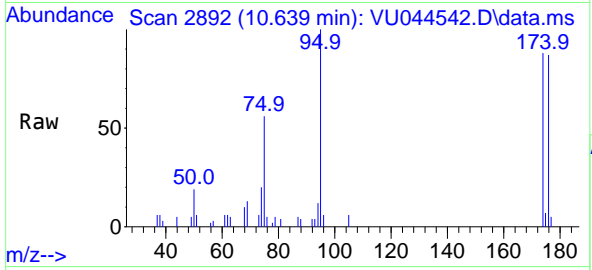
Tgt Ion:107 Resp: 53554  
 Ion Ratio Lower Upper  
 107 100  
 109 94.0 0.0 184.8



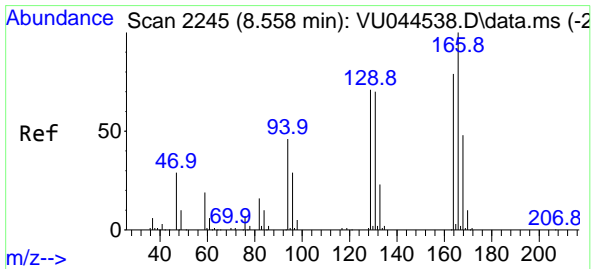
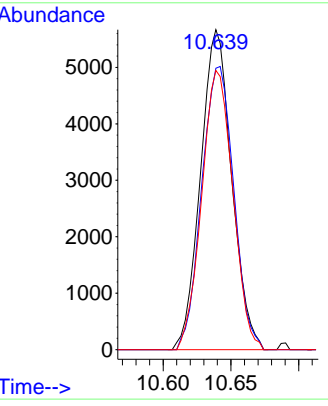
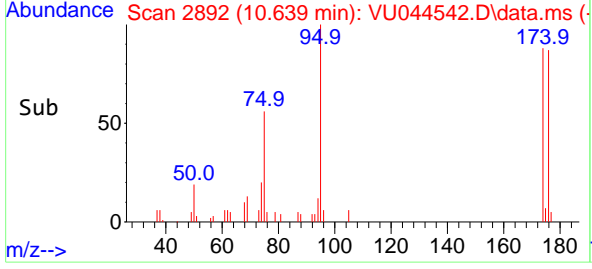


#57  
 4-Bromofluorobenzene  
 Concen: 1.11 ug/l  
 RT: 10.639 min Scan# 2892  
 Delta R.T. 0.000 min  
 Lab File: VU044542.D  
 Acq: 01 Sep 2021 09:29

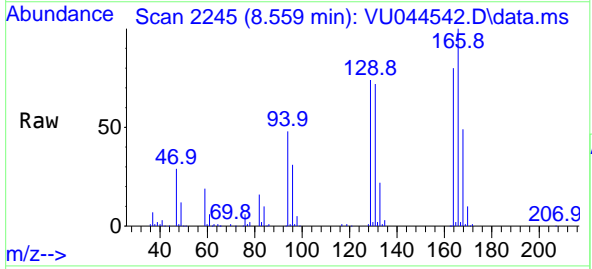
Instrument :  
 MSVOA\_U  
 ClientSampled :



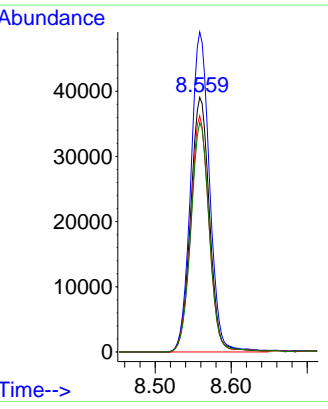
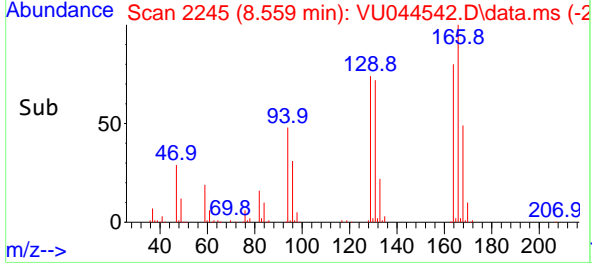
Tgt Ion: 95 Resp: 9058  
 Ion Ratio Lower Upper  
 95 100  
 174 91.0 65.9 98.9  
 176 87.3 63.0 94.4



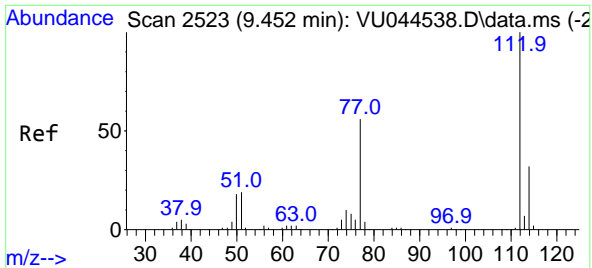
#58  
 Tetrachloroethene  
 Concen: 10.73 ug/l  
 RT: 8.559 min Scan# 2245  
 Delta R.T. 0.000 min  
 Lab File: VU044542.D  
 Acq: 01 Sep 2021 09:29



Tgt Ion: 164 Resp: 67351  
 Ion Ratio Lower Upper  
 164 100  
 166 125.7 100.7 151.1  
 129 92.8 71.8 107.8  
 131 90.0 70.4 105.6

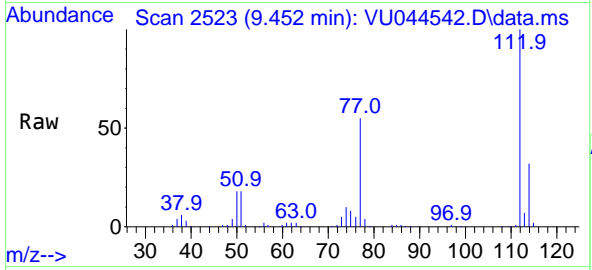




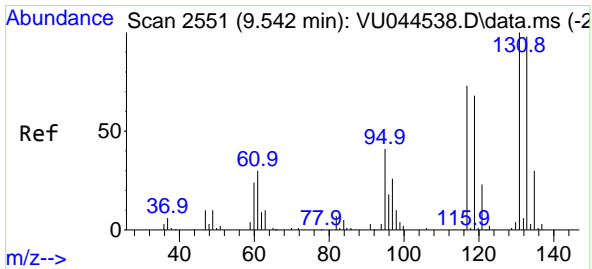
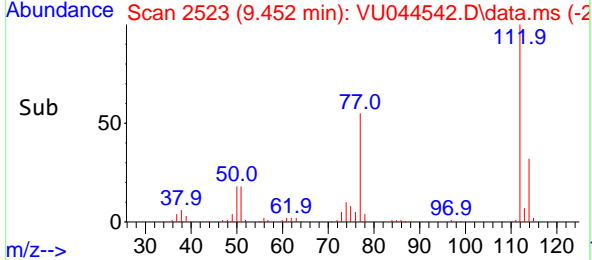
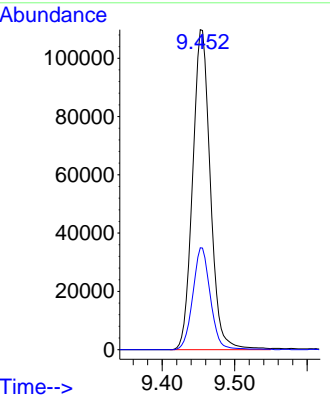


#59  
 Chlorobenzene  
 Concen: 10.78 ug/l  
 RT: 9.452 min Scan# 2523  
 Delta R.T. 0.000 min  
 Lab File: VU044542.D  
 Acq: 01 Sep 2021 09:29

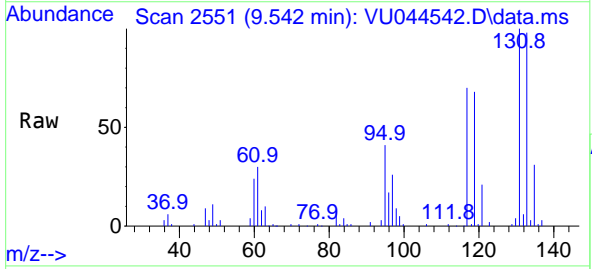
Instrument :  
 MSVOA\_U  
 ClientSampled :



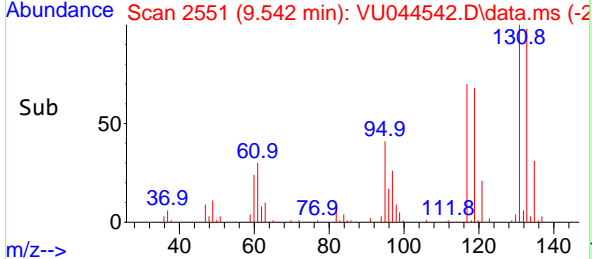
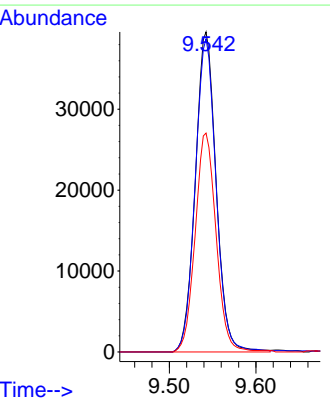
Tgt Ion:112 Resp: 186312  
 Ion Ratio Lower Upper  
 112 100  
 114 31.8 25.5 38.3

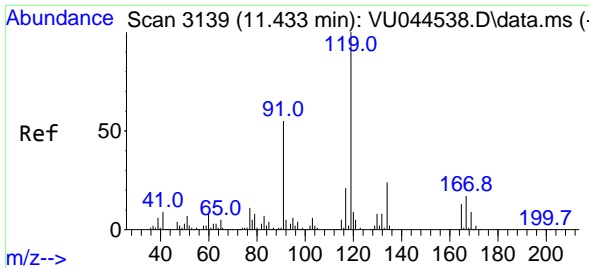


#60  
 1,1,1,2-Tetrachloroethane  
 Concen: 10.66 ug/l  
 RT: 9.542 min Scan# 2551  
 Delta R.T. 0.000 min  
 Lab File: VU044542.D  
 Acq: 01 Sep 2021 09:29



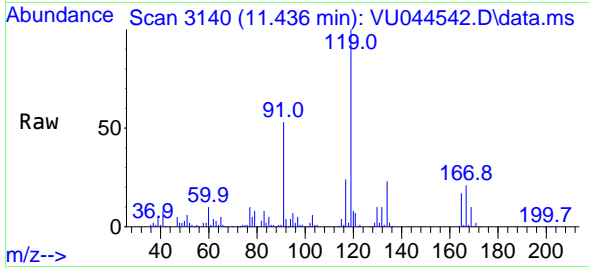
Tgt Ion:131 Resp: 65974  
 Ion Ratio Lower Upper  
 131 100  
 133 98.2 76.8 115.2  
 119 68.8 54.2 81.2



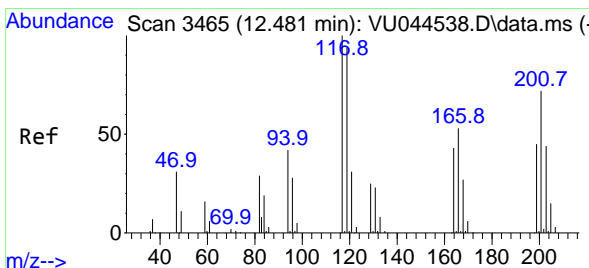
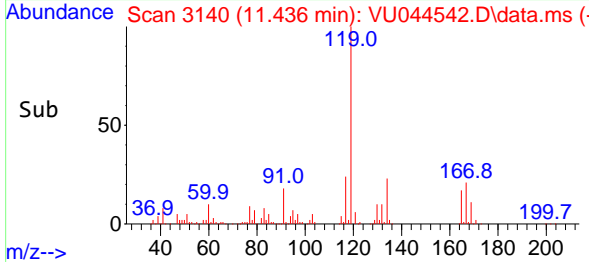
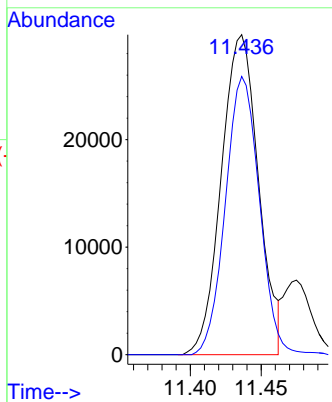


#61  
 Pentachloroethane  
 Concen: 11.06 ug/l  
 RT: 11.436 min Scan# 3140  
 Delta R.T. 0.003 min  
 Lab File: VU044542.D  
 Acq: 01 Sep 2021 09:29

Instrument :  
 MSVOA\_U  
 ClientSampled :

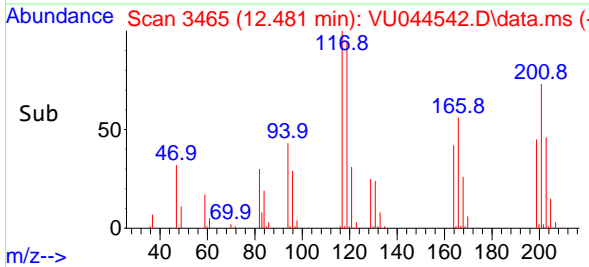
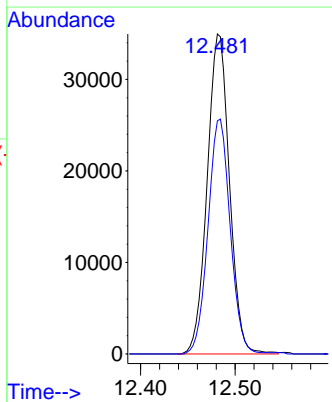
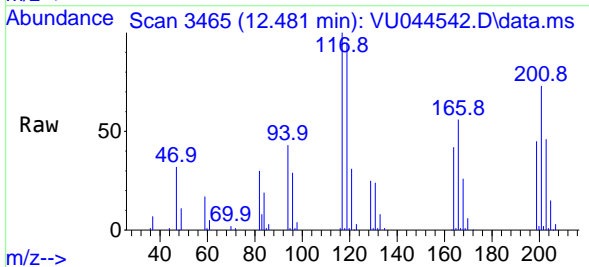


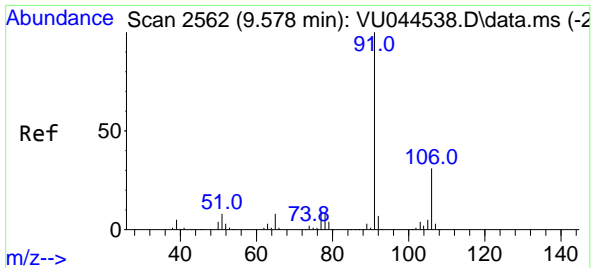
Tgt Ion:117 Resp: 54262  
 Ion Ratio Lower Upper  
 117 100  
 167 79.8 64.5 96.7



#62  
 Hexachloroethane  
 Concen: 11.60 ug/l  
 RT: 12.481 min Scan# 3465  
 Delta R.T. 0.000 min  
 Lab File: VU044542.D  
 Acq: 01 Sep 2021 09:29

Tgt Ion:117 Resp: 57344  
 Ion Ratio Lower Upper  
 117 100  
 201 73.0 58.6 87.8

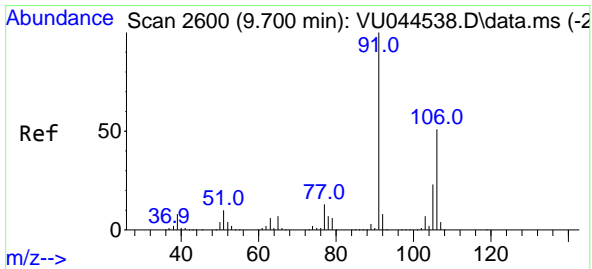
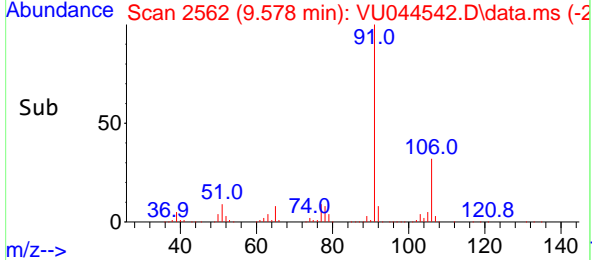
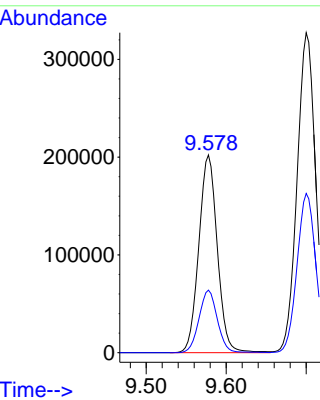
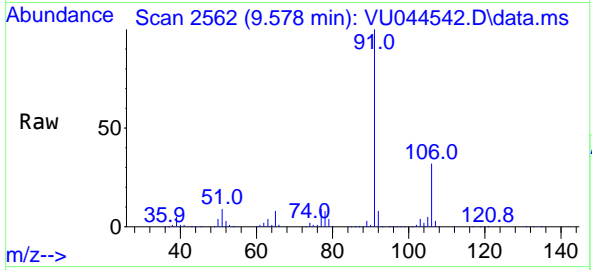




#63  
 Ethyl Benzene  
 Concen: 11.39 ug/l  
 RT: 9.578 min Scan# 2562  
 Delta R.T. 0.000 min  
 Lab File: VU044542.D  
 Acq: 01 Sep 2021 09:29

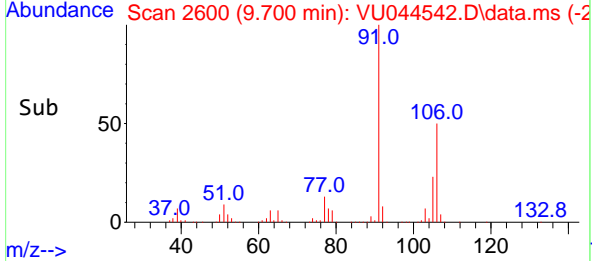
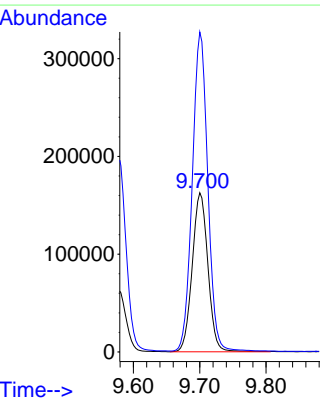
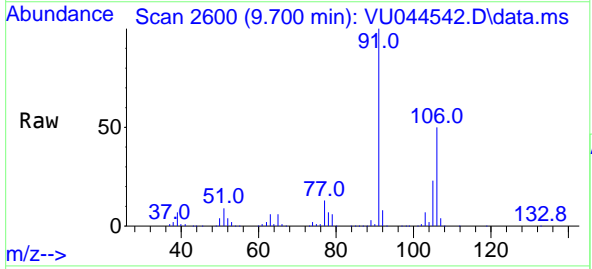
Instrument :  
 MSVOA\_U  
 ClientSampled :

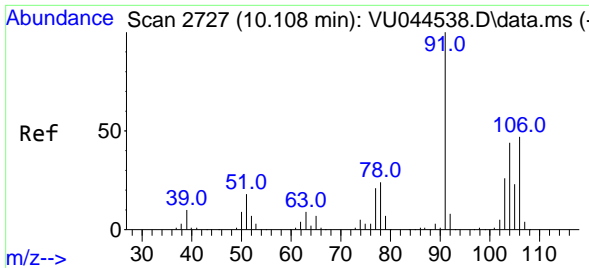
Tgt Ion: 91 Resp: 325330  
 Ion Ratio Lower Upper  
 91 100  
 106 31.7 25.0 37.4



#64  
 m/p-Xylenes  
 Concen: 23.34 ug/l  
 RT: 9.700 min Scan# 2600  
 Delta R.T. 0.000 min  
 Lab File: VU044542.D  
 Acq: 01 Sep 2021 09:29

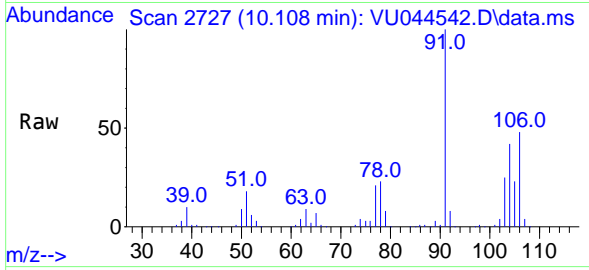
Tgt Ion: 106 Resp: 267578  
 Ion Ratio Lower Upper  
 106 100  
 91 197.8 160.2 240.2



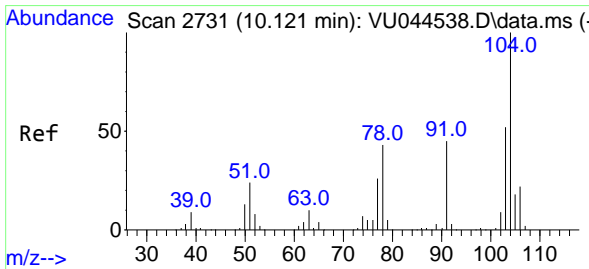
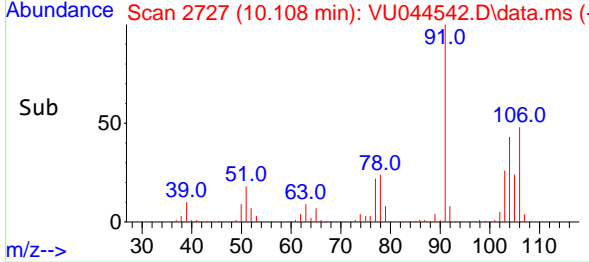
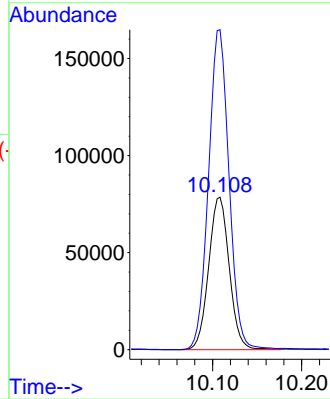


#65  
 o-Xylene  
 Concen: 11.36 ug/l  
 RT: 10.108 min Scan# 2727  
 Delta R.T. 0.000 min  
 Lab File: VU044542.D  
 Acq: 01 Sep 2021 09:29

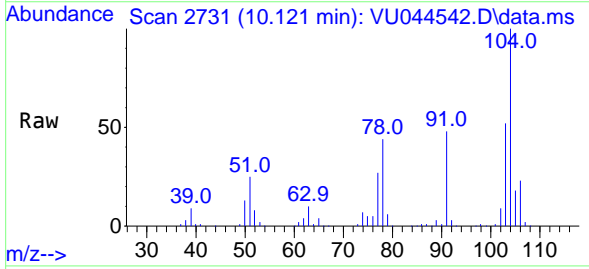
Instrument :  
 MSVOA\_U  
 ClientSampled :



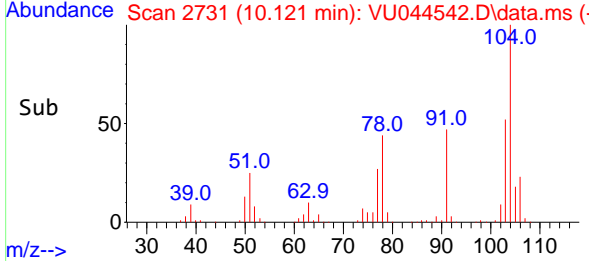
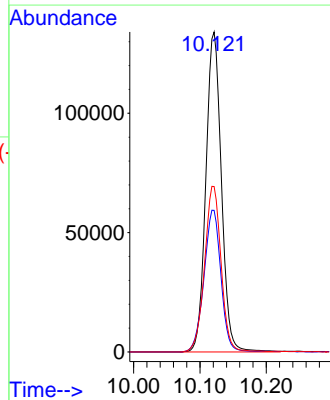
Tgt Ion:106 Resp: 126131  
 Ion Ratio Lower Upper  
 106 100  
 91 209.7 105.3 315.9

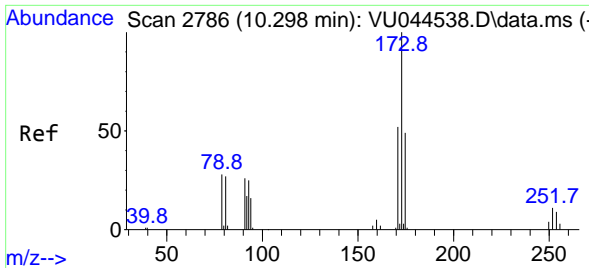


#66  
 Styrene  
 Concen: 11.62 ug/l  
 RT: 10.121 min Scan# 2731  
 Delta R.T. 0.000 min  
 Lab File: VU044542.D  
 Acq: 01 Sep 2021 09:29



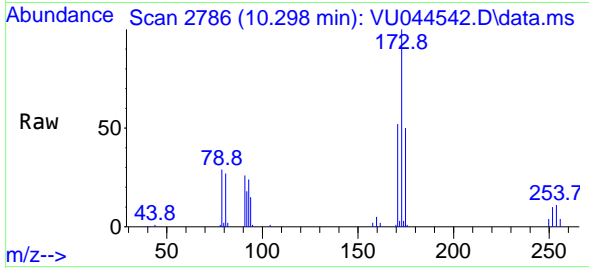
Tgt Ion:104 Resp: 218224  
 Ion Ratio Lower Upper  
 104 100  
 78 48.2 38.2 57.4  
 103 55.0 44.2 66.4



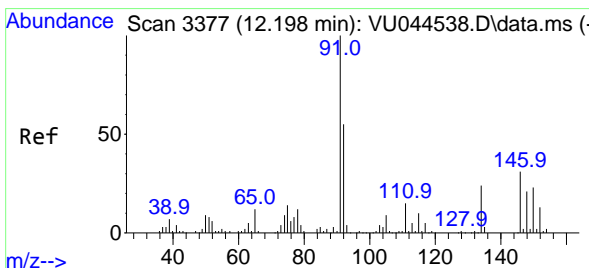
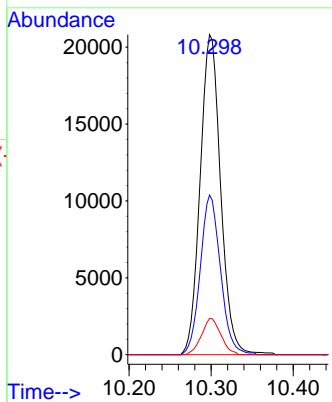
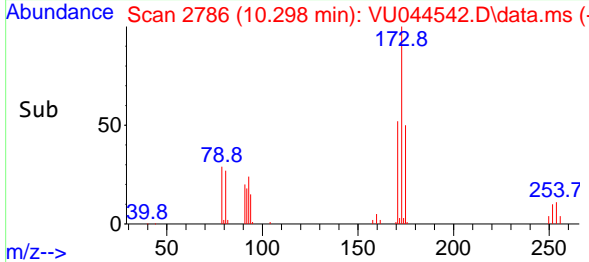


#67  
 Bromoform  
 Concen: 11.14 ug/l  
 RT: 10.298 min Scan# 2786  
 Delta R.T. 0.000 min  
 Lab File: VU044542.D  
 Acq: 01 Sep 2021 09:29

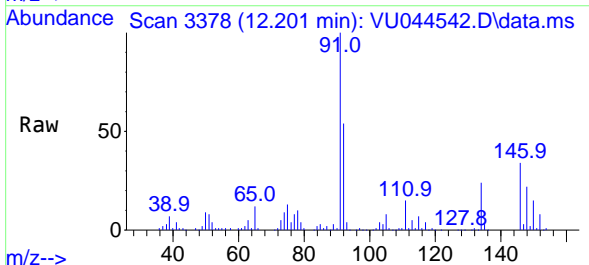
Instrument :  
 MSVOA\_U  
 ClientSampled :



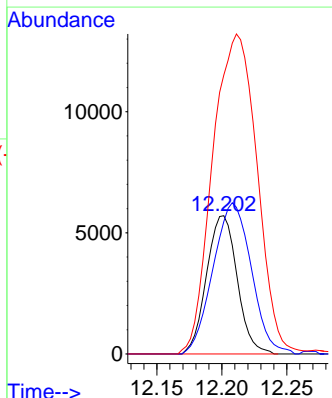
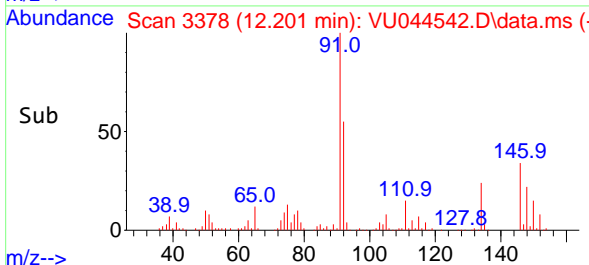
Tgt Ion:173 Resp: 36096  
 Ion Ratio Lower Upper  
 173 100  
 175 49.1 39.1 58.7  
 254 10.7 7.9 11.9

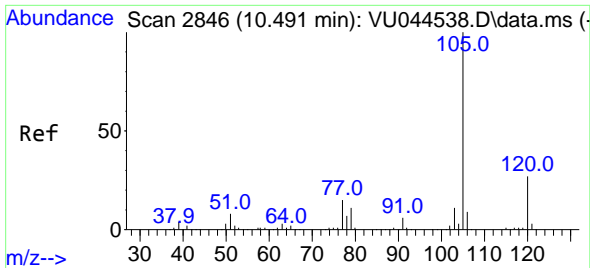


#68  
 1,2-Dichlorobenzene-d4  
 Concen: 0.99 ug/l  
 RT: 12.201 min Scan# 3378  
 Delta R.T. 0.003 min  
 Lab File: VU044542.D  
 Acq: 01 Sep 2021 09:29



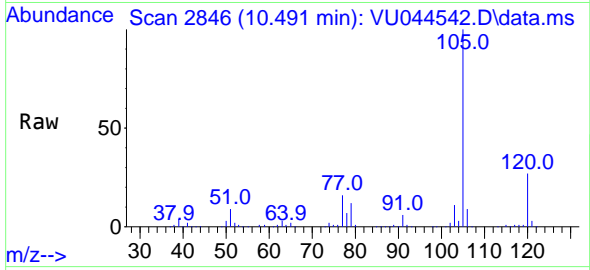
Tgt Ion:152 Resp: 9361  
 Ion Ratio Lower Upper  
 152 100  
 115 136.7 0.0 277.8  
 150 335.2 0.0 674.2



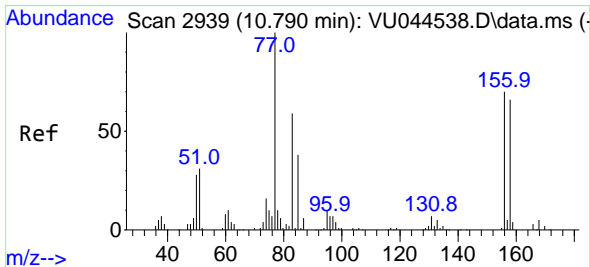
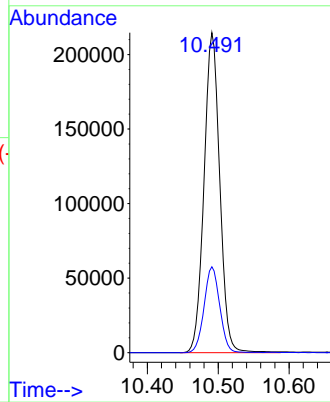
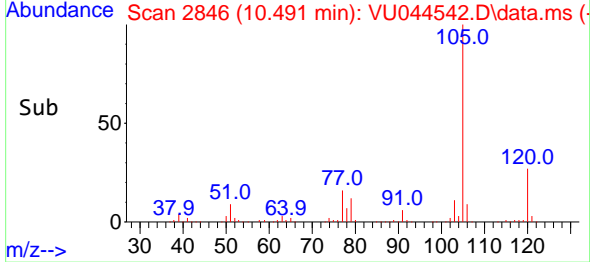


#69  
 Isopropylbenzene  
 Concen: 11.43 ug/l  
 RT: 10.491 min Scan# 2846  
 Delta R.T. 0.000 min  
 Lab File: VU044542.D  
 Acq: 01 Sep 2021 09:29

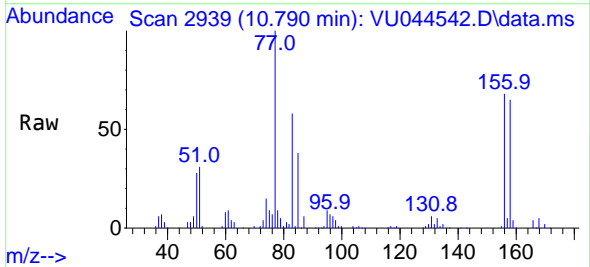
Instrument :  
 MSVOA\_U  
 ClientSampled :



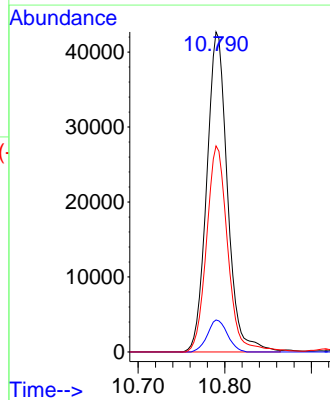
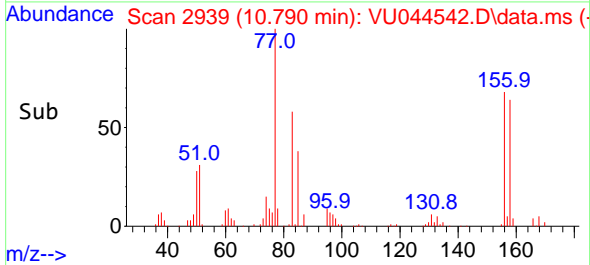
Tgt Ion:105 Resp: 330900  
 Ion Ratio Lower Upper  
 105 100  
 120 26.6 13.4 40.1

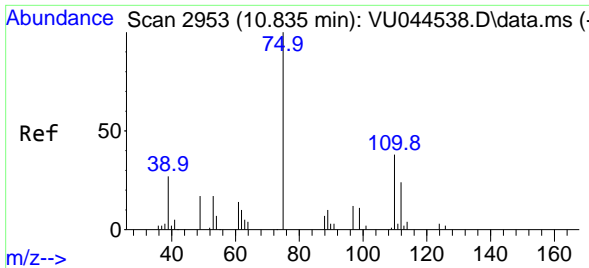


#70  
 1,1,2,2-Tetrachloroethane  
 Concen: 10.40 ug/l  
 RT: 10.790 min Scan# 2939  
 Delta R.T. 0.000 min  
 Lab File: VU044542.D  
 Acq: 01 Sep 2021 09:29



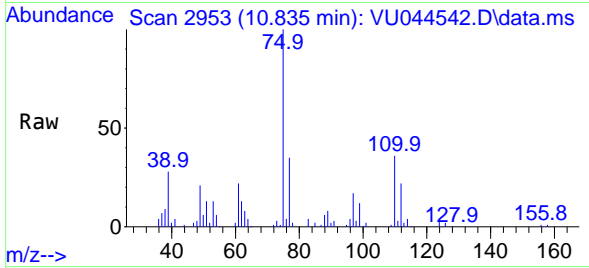
Tgt Ion: 83 Resp: 70951  
 Ion Ratio Lower Upper  
 83 100  
 131 9.6 8.0 12.0  
 85 66.0 51.9 77.9



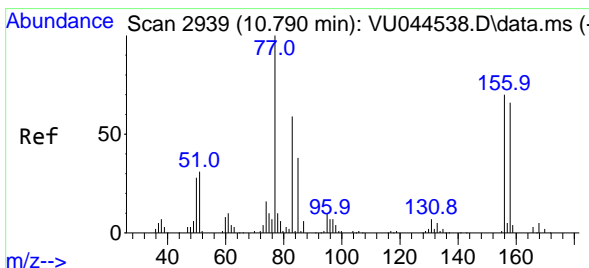
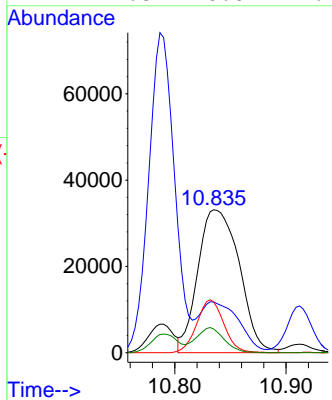
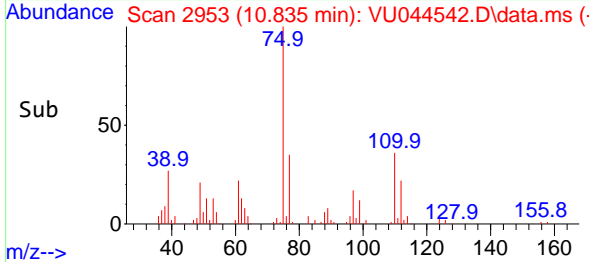


#71  
 1,2,3-Trichloropropane  
 Concen: 17.62 ug/l  
 RT: 10.835 min Scan# 2953  
 Delta R.T. 0.000 min  
 Lab File: VU044542.D  
 Acq: 01 Sep 2021 09:29

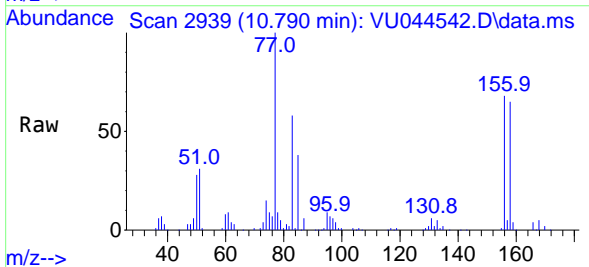
Instrument :  
 MSVOA\_U  
 ClientSampled :



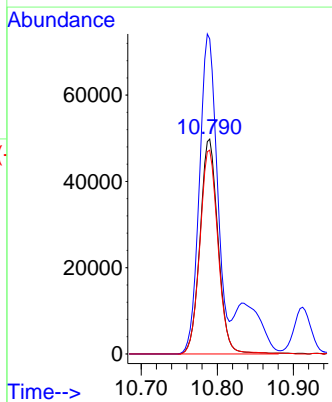
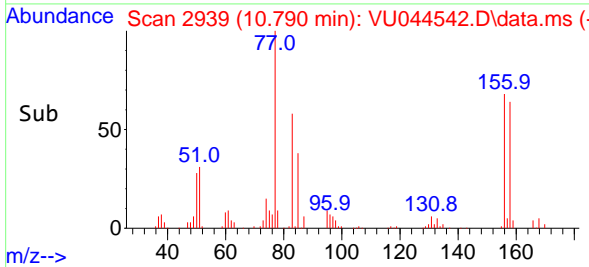
Tgt Ion: 75 Resp: 85649  
 Ion Ratio Lower Upper  
 75 100  
 77 31.8 0.0 120.8  
 110 24.2 0.0 97.4  
 97 11.8 0.0 49.2

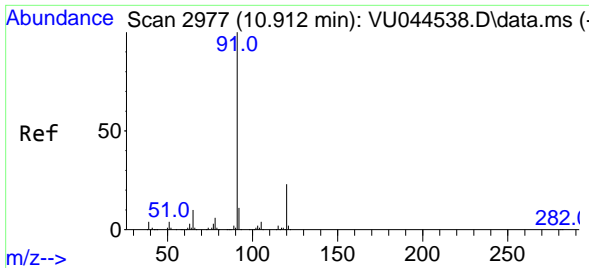


#72  
 Bromobenzene  
 Concen: 11.04 ug/l  
 RT: 10.790 min Scan# 2939  
 Delta R.T. 0.000 min  
 Lab File: VU044542.D  
 Acq: 01 Sep 2021 09:29



Tgt Ion: 156 Resp: 82077  
 Ion Ratio Lower Upper  
 156 100  
 77 146.4 0.0 293.2  
 158 95.7 0.0 194.0

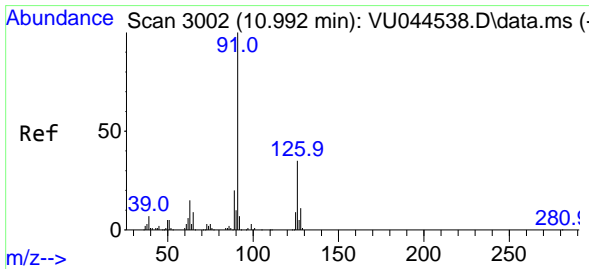
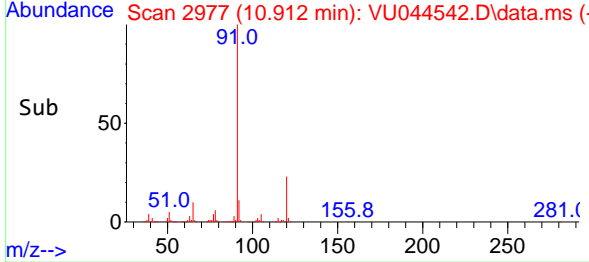
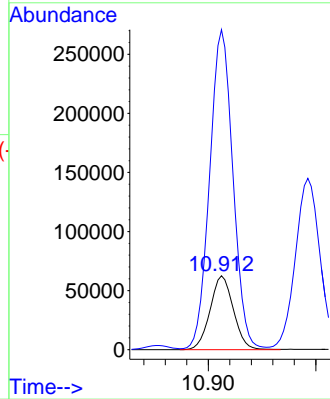
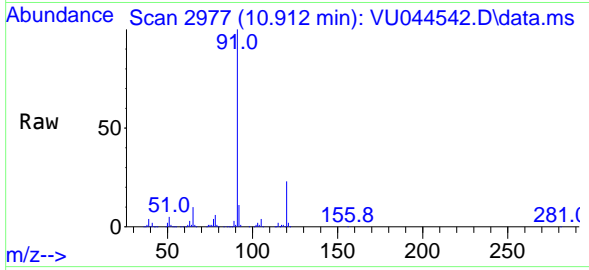




#73  
 n-propylbenzene  
 Concen: 11.61 ug/l  
 RT: 10.912 min Scan# 2977  
 Delta R.T. 0.000 min  
 Lab File: VU044542.D  
 Acq: 01 Sep 2021 09:29

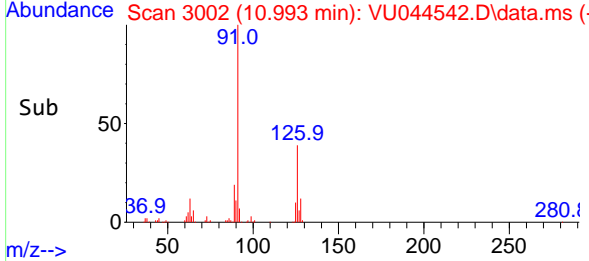
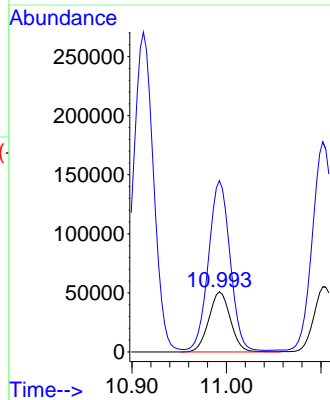
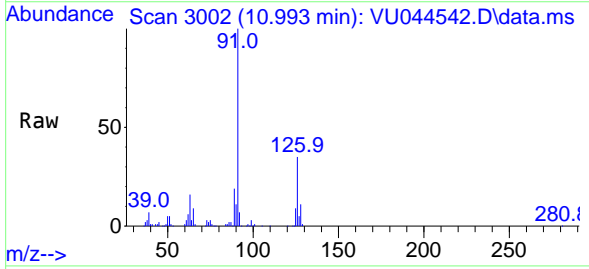
Instrument :  
 MSVOA\_U  
 ClientSampled :

Tgt Ion:120 Resp: 93901  
 Ion Ratio Lower Upper  
 120 100  
 91 430.3 343.8 515.8

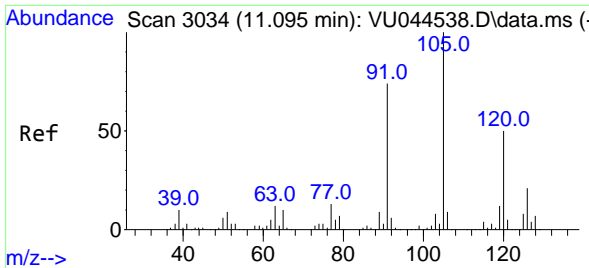


#74  
 2-Chlorotoluene  
 Concen: 11.15 ug/l  
 RT: 10.993 min Scan# 3002  
 Delta R.T. 0.000 min  
 Lab File: VU044542.D  
 Acq: 01 Sep 2021 09:29

Tgt Ion:126 Resp: 80870  
 Ion Ratio Lower Upper  
 126 100  
 91 279.9 0.0 564.8

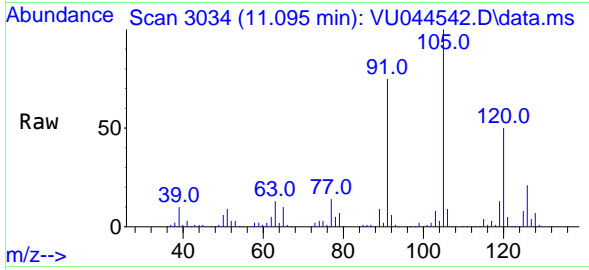




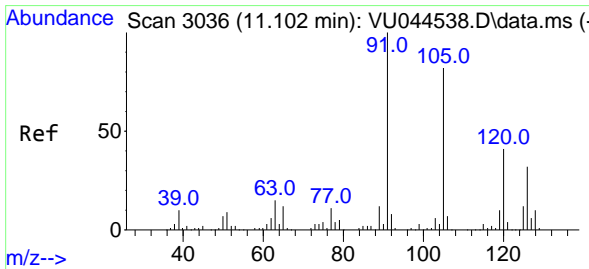
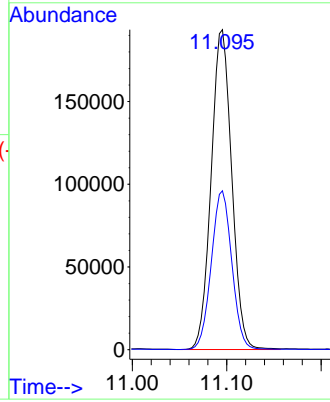
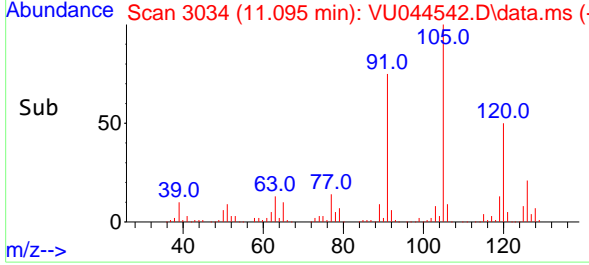


#75  
 1,3,5-Trimethylbenzene  
 Concen: 11.63 ug/l  
 RT: 11.095 min Scan# 3034  
 Delta R.T. 0.000 min  
 Lab File: VU044542.D  
 Acq: 01 Sep 2021 09:29

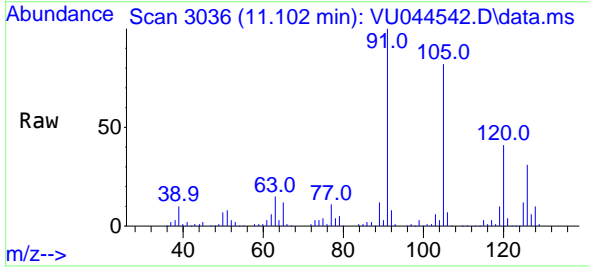
Instrument :  
 MSVOA\_U  
 ClientSampled :



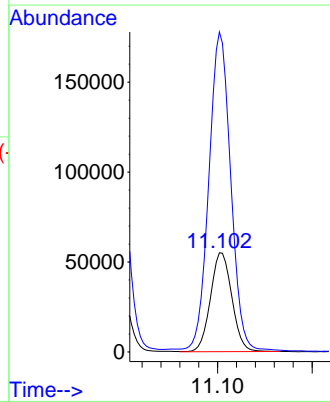
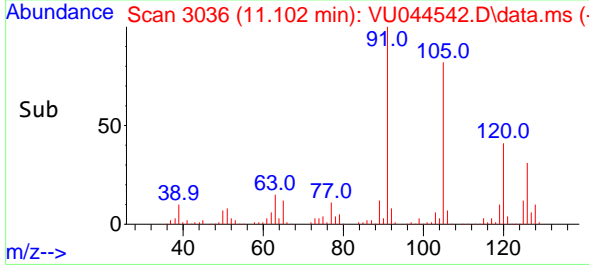
Tgt Ion:105 Resp: 292215  
 Ion Ratio Lower Upper  
 105 100  
 120 49.4 39.7 59.5

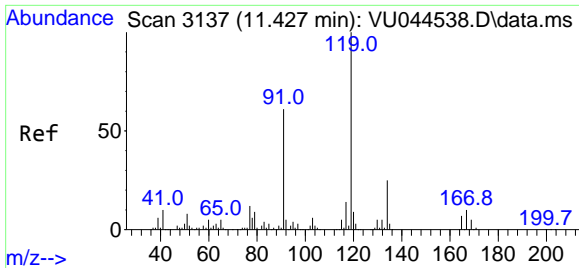


#76  
 4-Chlorotoluene  
 Concen: 11.21 ug/l  
 RT: 11.102 min Scan# 3036  
 Delta R.T. 0.000 min  
 Lab File: VU044542.D  
 Acq: 01 Sep 2021 09:29



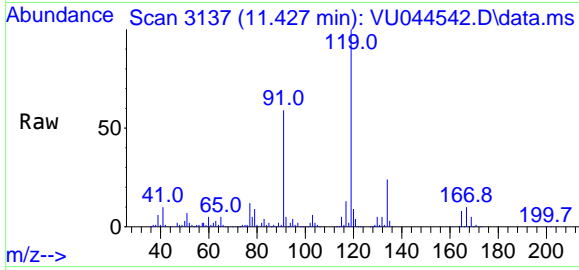
Tgt Ion:126 Resp: 86448  
 Ion Ratio Lower Upper  
 126 100  
 91 328.4 0.0 644.6





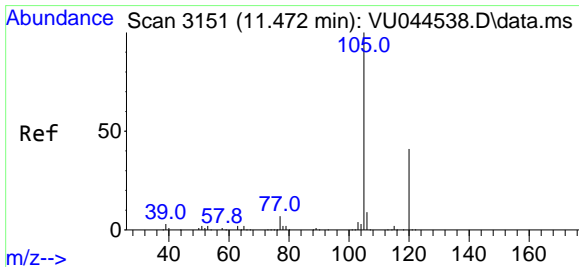
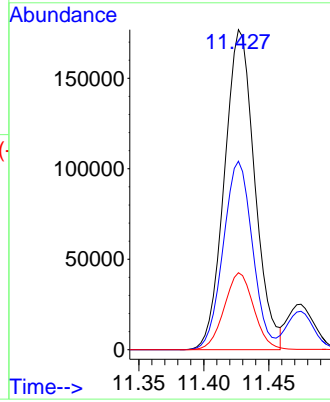
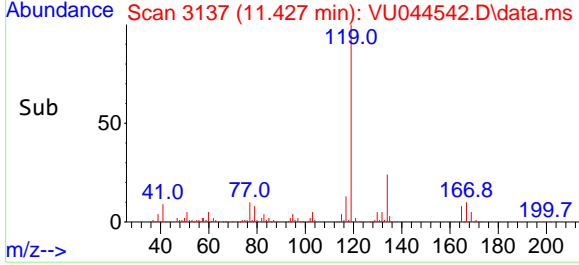
#77  
 tert-Butylbenzene  
 Concen: 11.47 ug/l  
 RT: 11.427 min Scan# 3137  
 Delta R.T. 0.000 min  
 Lab File: VU044542.D  
 Acq: 01 Sep 2021 09:29

Instrument :  
 MSVOA\_U  
 ClientSampled :

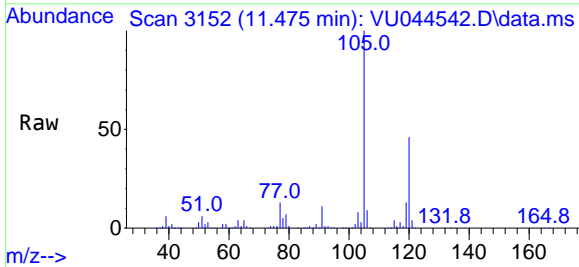


Tgt Ion:119 Resp: 287034

Ion	Ratio	Lower	Upper
119	100		
91	57.1	28.6	85.9
134	23.5	19.0	28.6

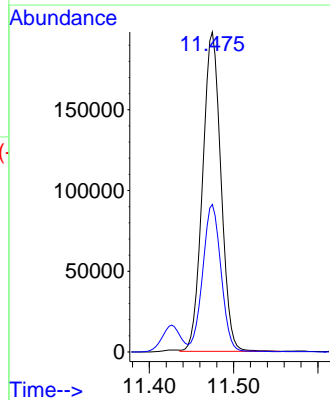
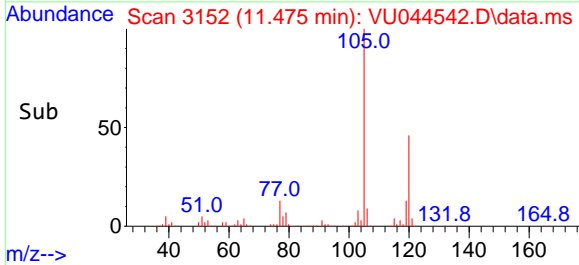


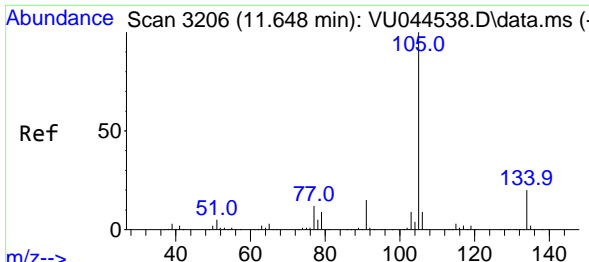
#78  
 1,2,4-Trimethylbenzene  
 Concen: 11.71 ug/l  
 RT: 11.475 min Scan# 3152  
 Delta R.T. 0.003 min  
 Lab File: VU044542.D  
 Acq: 01 Sep 2021 09:29



Tgt Ion:105 Resp: 299956

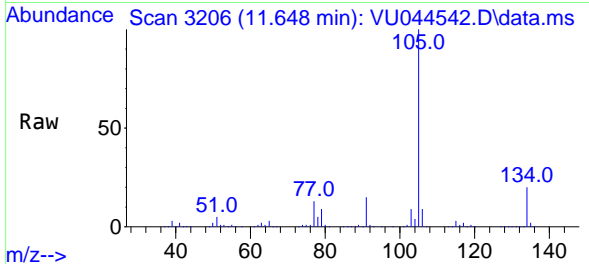
Ion	Ratio	Lower	Upper
105	100		
120	46.3	23.3	69.8



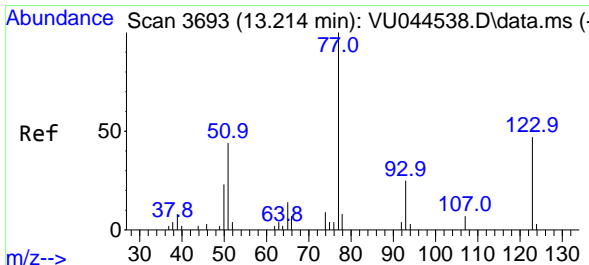
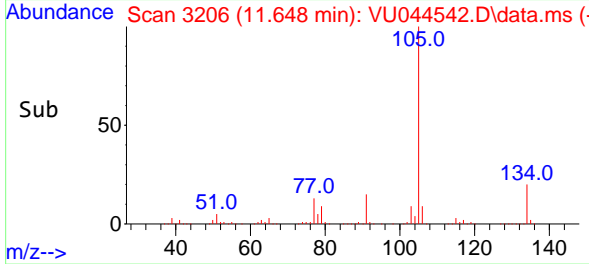
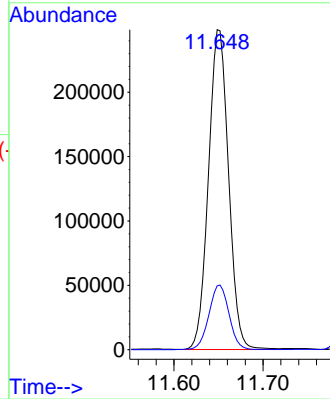


#79  
 sec-Butylbenzene  
 Concen: 11.45 ug/l  
 RT: 11.648 min Scan# 3206  
 Delta R.T. 0.000 min  
 Lab File: VU044542.D  
 Acq: 01 Sep 2021 09:29

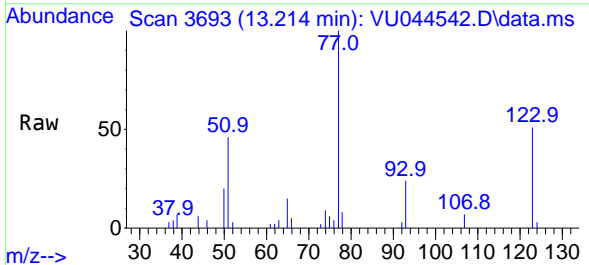
Instrument :  
 MSVOA\_U  
 ClientSampled :



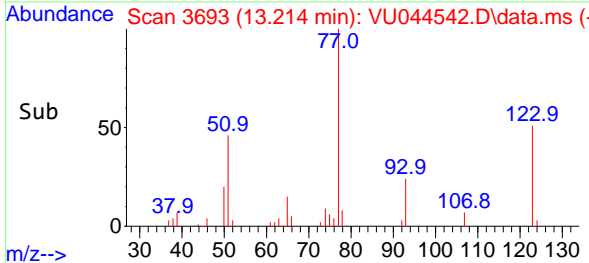
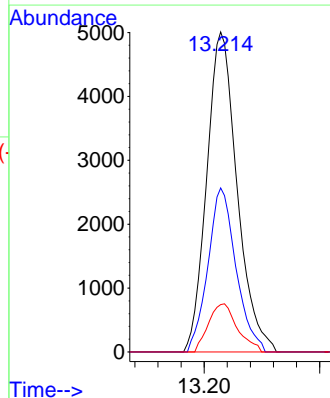
Tgt Ion:105 Resp: 388480  
 Ion Ratio Lower Upper  
 105 100  
 134 20.2 16.1 24.1

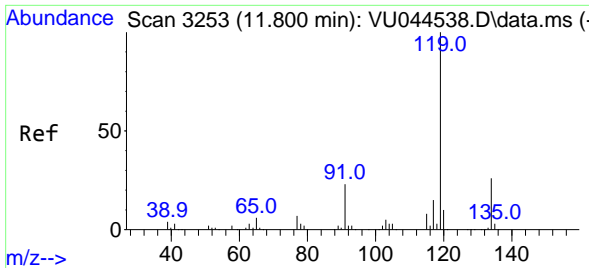


#80  
 Nitrobenzene  
 Concen: 57.86 ug/l  
 RT: 13.214 min Scan# 3693  
 Delta R.T. 0.000 min  
 Lab File: VU044542.D  
 Acq: 01 Sep 2021 09:29



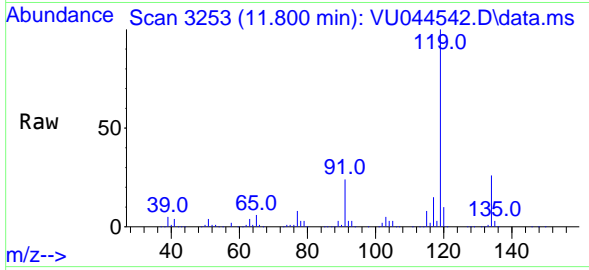
Tgt Ion: 77 Resp: 9140  
 Ion Ratio Lower Upper  
 77 100  
 123 47.4 20.2 71.8  
 65 14.4 13.4 17.0





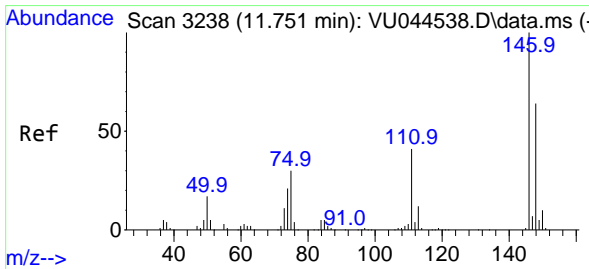
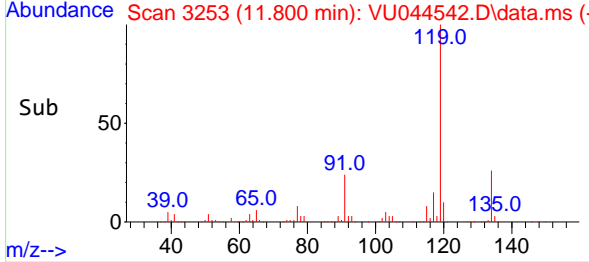
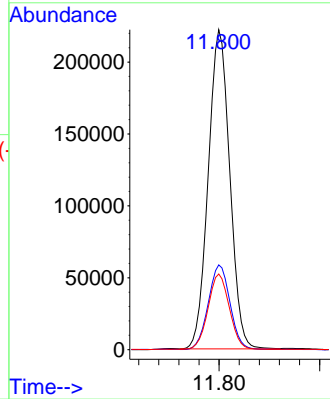
#81  
 p-Isopropyltoluene  
 Concen: 11.86 ug/l  
 RT: 11.800 min Scan# 3253  
 Delta R.T. 0.000 min  
 Lab File: VU044542.D  
 Acq: 01 Sep 2021 09:29

Instrument :  
 MSVOA\_U  
 ClientSampled :

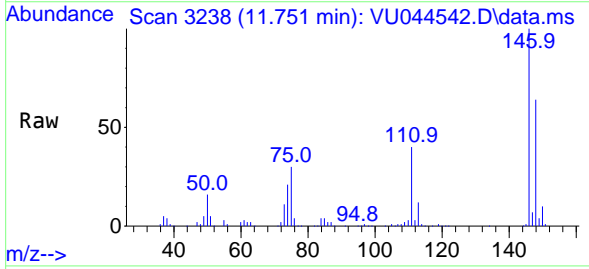


Tgt Ion:119 Resp: 329881

Ion	Ratio	Lower	Upper
119	100		
134	26.7	21.1	31.7
91	23.3	18.7	28.1

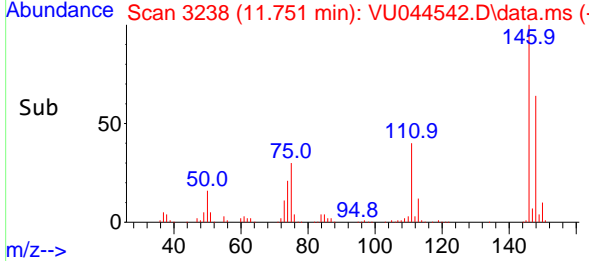
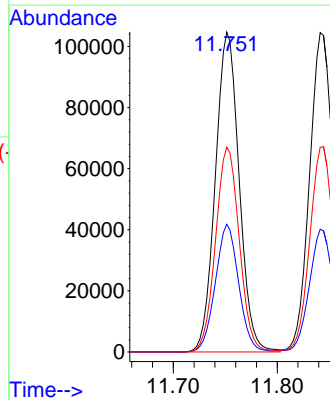


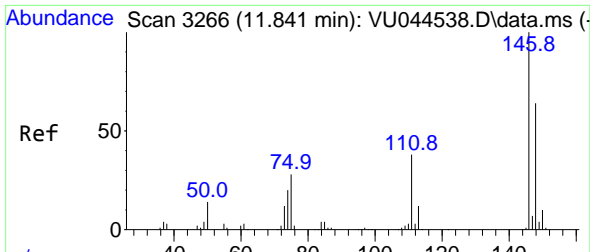
#82  
 1,3-Dichlorobenzene  
 Concen: 11.18 ug/l  
 RT: 11.751 min Scan# 3238  
 Delta R.T. 0.000 min  
 Lab File: VU044542.D  
 Acq: 01 Sep 2021 09:29



Tgt Ion:146 Resp: 166536

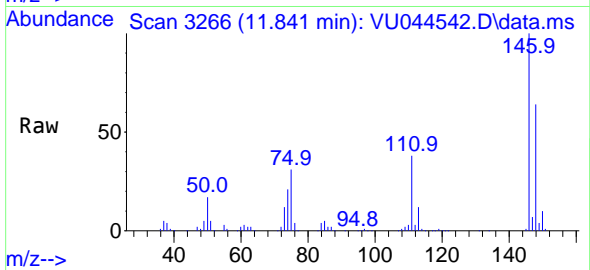
Ion	Ratio	Lower	Upper
146	100		
111	39.2	32.2	48.2
148	63.8	51.7	77.5



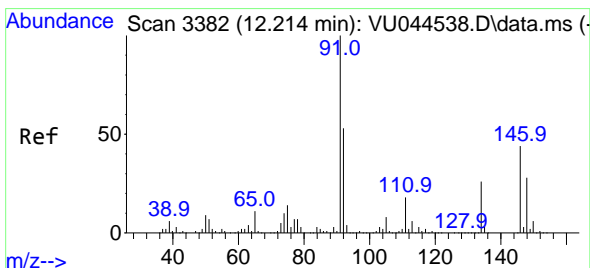
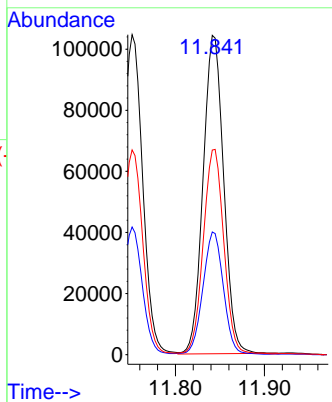
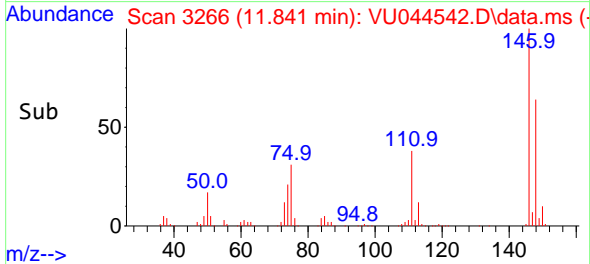


#83  
 1,4-Dichlorobenzene  
 Concen: 11.13 ug/l  
 RT: 11.841 min Scan# 3266  
 Delta R.T. 0.000 min  
 Lab File: VU044542.D  
 Acq: 01 Sep 2021 09:29

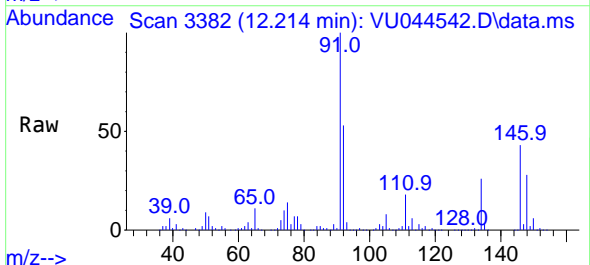
Instrument :  
 MSVOA\_U  
 ClientSampled :



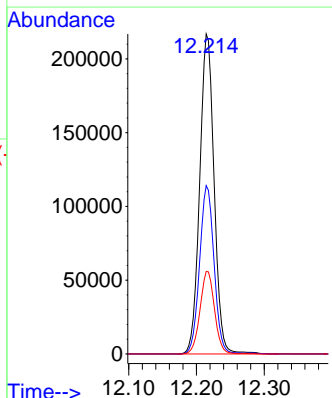
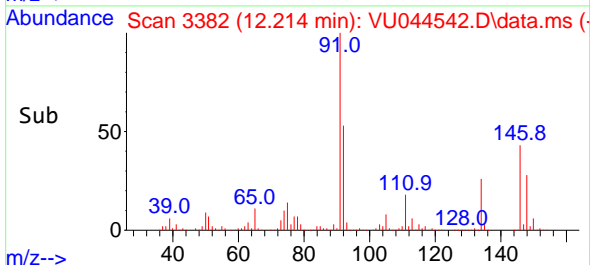
Tgt Ion:146 Resp: 166815  
 Ion Ratio Lower Upper  
 146 100  
 111 38.1 30.5 45.7  
 148 64.3 51.6 77.4

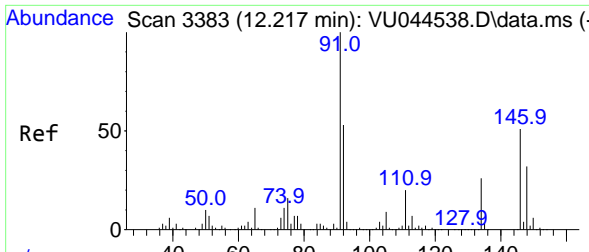


#84  
 n-Butylbenzene  
 Concen: 12.12 ug/l  
 RT: 12.214 min Scan# 3382  
 Delta R.T. 0.000 min  
 Lab File: VU044542.D  
 Acq: 01 Sep 2021 09:29



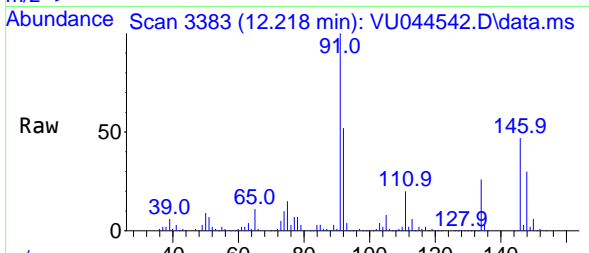
Tgt Ion: 91 Resp: 320263  
 Ion Ratio Lower Upper  
 91 100  
 92 52.8 42.6 63.8  
 134 25.9 21.0 31.4



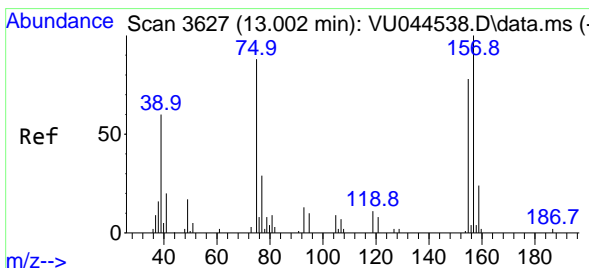
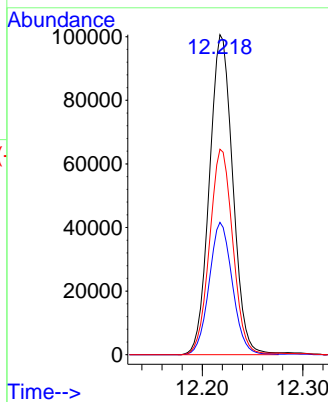
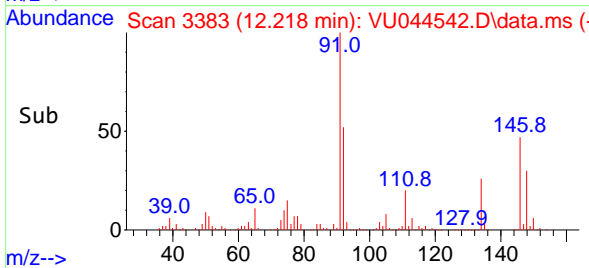


#85  
 1,2-Dichlorobenzene  
 Concen: 10.86 ug/l  
 RT: 12.218 min Scan# 3383  
 Delta R.T. 0.000 min  
 Lab File: VU044542.D  
 Acq: 01 Sep 2021 09:29

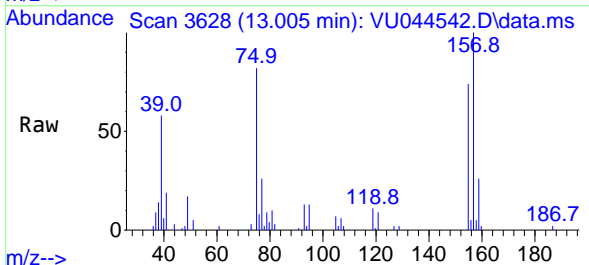
Instrument :  
 MSVOA\_U  
 ClientSampled :



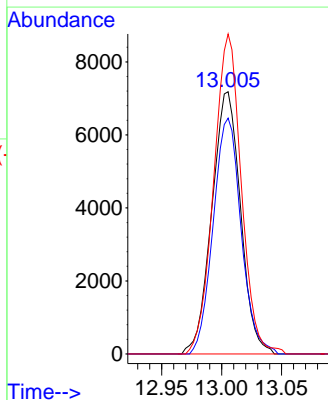
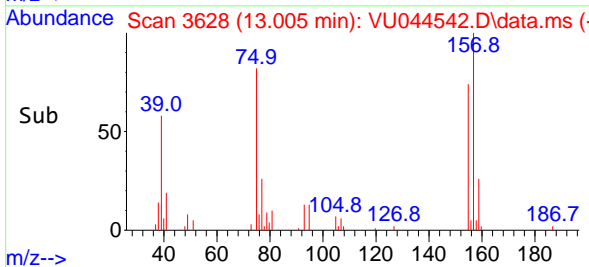
Tgt Ion:146 Resp: 162429  
 Ion Ratio Lower Upper  
 146 100  
 111 41.2 20.3 60.9  
 148 64.4 31.9 95.5

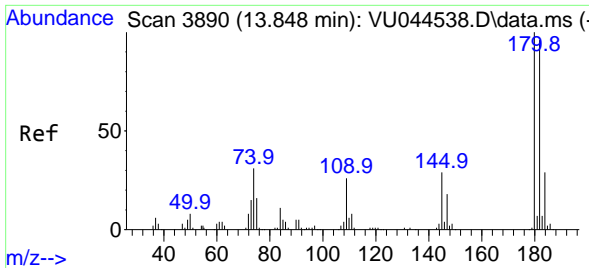


#86  
 1,2-Dibromo-3-Chloropropane  
 Concen: 11.81 ug/l  
 RT: 13.005 min Scan# 3628  
 Delta R.T. 0.003 min  
 Lab File: VU044542.D  
 Acq: 01 Sep 2021 09:29



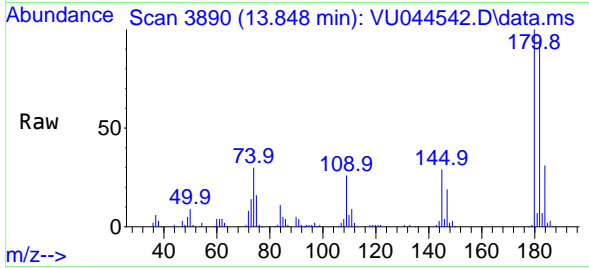
Tgt Ion: 75 Resp: 11953  
 Ion Ratio Lower Upper  
 75 100  
 155 87.6 68.1 102.1  
 157 117.0 89.0 133.4



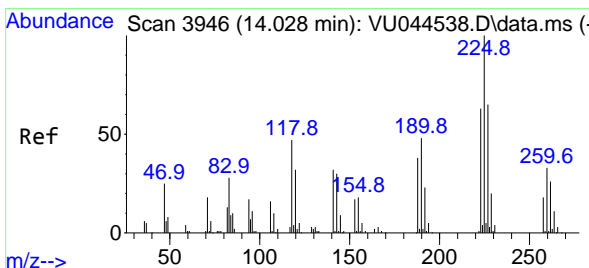
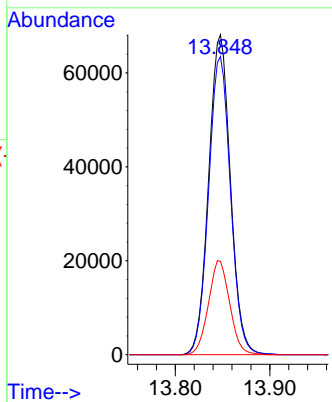
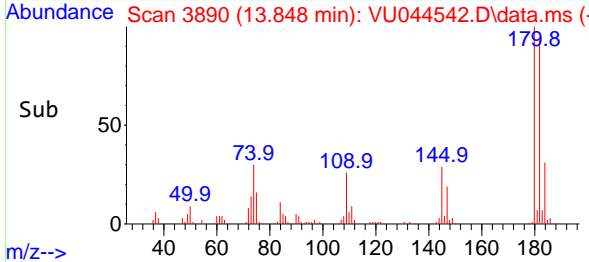


#87  
 1,2,4-Trichlorobenzene  
 Concen: 11.65 ug/l  
 RT: 13.848 min Scan# 3890  
 Delta R.T. 0.000 min  
 Lab File: VU044542.D  
 Acq: 01 Sep 2021 09:29

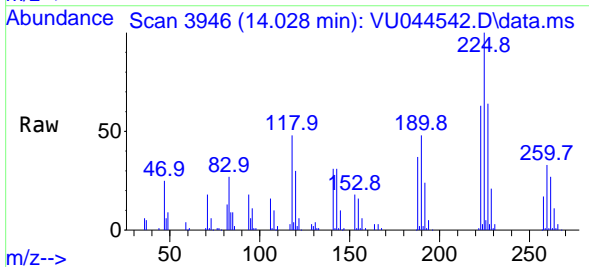
Instrument :  
 MSVOA\_U  
 ClientSampled :



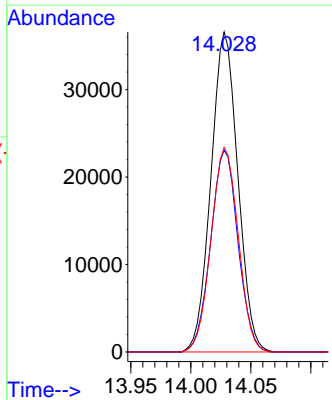
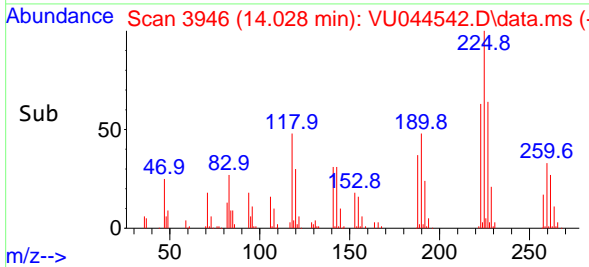
Tgt Ion:180 Resp: 109071  
 Ion Ratio Lower Upper  
 180 100  
 182 93.7 77.1 115.7  
 145 28.7 23.7 35.5

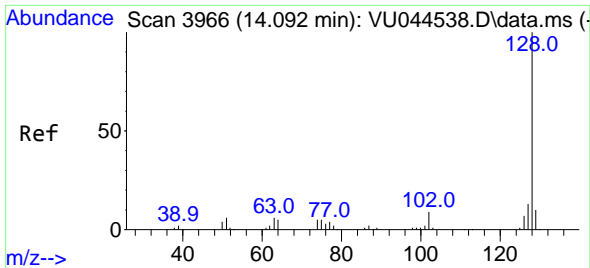


#88  
 Hexachlorobutadiene  
 Concen: 10.96 ug/l  
 RT: 14.028 min Scan# 3946  
 Delta R.T. 0.000 min  
 Lab File: VU044542.D  
 Acq: 01 Sep 2021 09:29



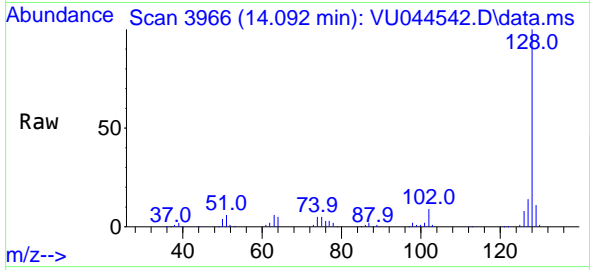
Tgt Ion:225 Resp: 57004  
 Ion Ratio Lower Upper  
 225 100  
 223 64.1 50.4 75.6  
 227 64.7 51.4 77.2





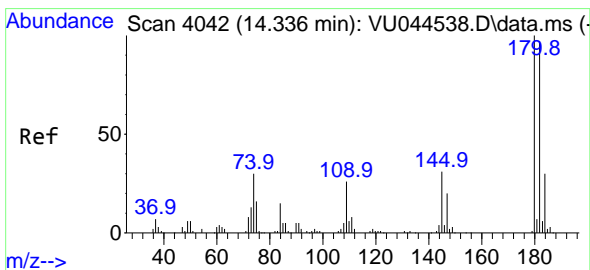
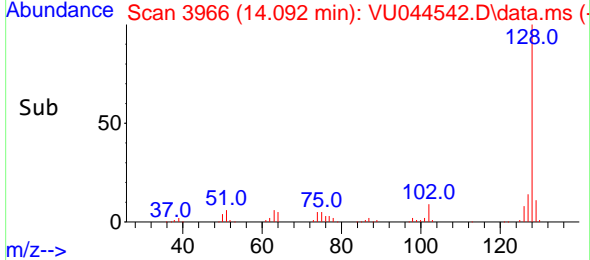
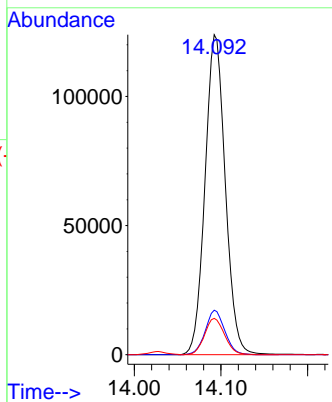
#89  
 Naphthalene  
 Concen: 11.02 ug/l  
 RT: 14.092 min Scan# 3966  
 Delta R.T. 0.000 min  
 Lab File: VU044542.D  
 Acq: 01 Sep 2021 09:29

Instrument :  
 MSVOA\_U  
 ClientSampled :

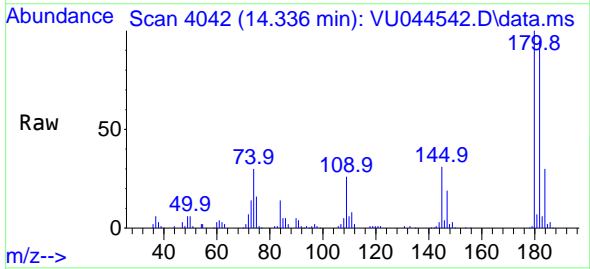


Tgt Ion:128 Resp: 201189  

Ion	Ratio	Lower	Upper
128	100		
127	13.4	10.7	16.1
129	11.2	8.8	13.2



#90  
 1,2,3-Trichlorobenzene  
 Concen: 11.29 ug/l  
 RT: 14.336 min Scan# 4042  
 Delta R.T. 0.000 min  
 Lab File: VU044542.D  
 Acq: 01 Sep 2021 09:29



Tgt Ion:180 Resp: 102275  

Ion	Ratio	Lower	Upper
180	100		
182	96.2	77.0	115.6
145	31.7	25.2	37.8

