

Data Path : Z:\voasrv\HPCHEM1\MSVOA\_U\Data\VU090123\  
 Data File : VU055080.D  
 Acq On : 02 Sep 2023 07:32  
 Operator : MD/SY  
 Sample : 04250-18  
 Misc : 25.0mL/MSVOA\_U/WATER  
 ALS Vial : 50 Sample Multiplier: 1

Instrument :  
 MSVOA\_U  
 ClientSampleId :  
 BH4C4

Integration Parameters: rteint.p  
 Integrator: RTE  
 Smoothing : ON  
 Sampling : 1  
 Start Thrs : 0.1  
 Stop Thrs : 0  
 Filtering: 5  
 Min Area: 3 % of largest Peak  
 Max Peaks: 100  
 Peak Location: TOP

If leading or trailing edge < 100 prefer < Baseline drop else tangent >  
 Peak separation: 5

Method : Z:\voasrv\HPCHEM1\MSVOA\_U\Method\SFAMUTR090123WMA.M  
 Title : TRACE VOA SFAM1.0

Signal : TIC: VU055080.D\data.ms

peak #	R.T. min	first scan	max scan	last scan	PK TY	peak height	corr. area	corr. % max.	% of total
1	1.596	88	95	106	rVB	58123	66162	10.00%	1.141%
2	1.911	185	193	206	rVB	71620	95176	14.39%	1.641%
3	2.136	260	263	277	rVB6	7065	10194	1.54%	0.176%
4	2.563	383	396	412	rBV	130880	215256	32.54%	3.712%
5	4.631	1029	1039	1073	rBV	83162	271567	41.06%	4.683%
6	5.059	1153	1172	1193	rBV2	126660	288354	43.60%	4.972%
7	5.721	1359	1378	1407	rBV2	250149	661417	100.00%	11.405%
8	6.245	1529	1541	1560	rBV	232369	451910	68.32%	7.793%
9	6.541	1621	1633	1652	rBV3	62086	123601	18.69%	2.131%
10	6.689	1665	1679	1707	rBV	160947	320315	48.43%	5.523%
11	7.563	1939	1951	1971	rBV2	54112	102329	15.47%	1.765%
12	7.898	2042	2055	2071	rBV	307074	541856	81.92%	9.344%
13	7.972	2073	2078	2086	rVB4	8516	13243	2.00%	0.228%
14	8.181	2132	2143	2160	rBV2	31973	57878	8.75%	0.998%
15	8.634	2268	2284	2323	rBV3	274325	640485	96.84%	11.044%
16	9.415	2513	2527	2553	rBV	349755	608628	92.02%	10.495%
17	10.753	2931	2943	2959	rBV	115836	188093	28.44%	3.243%
18	11.811	3258	3272	3294	rBV	390282	631505	95.48%	10.889%
19	12.065	3339	3351	3365	rBV4	10142	23573	3.56%	0.406%
20	12.190	3377	3390	3414	rVB	292423	487697	73.74%	8.410%

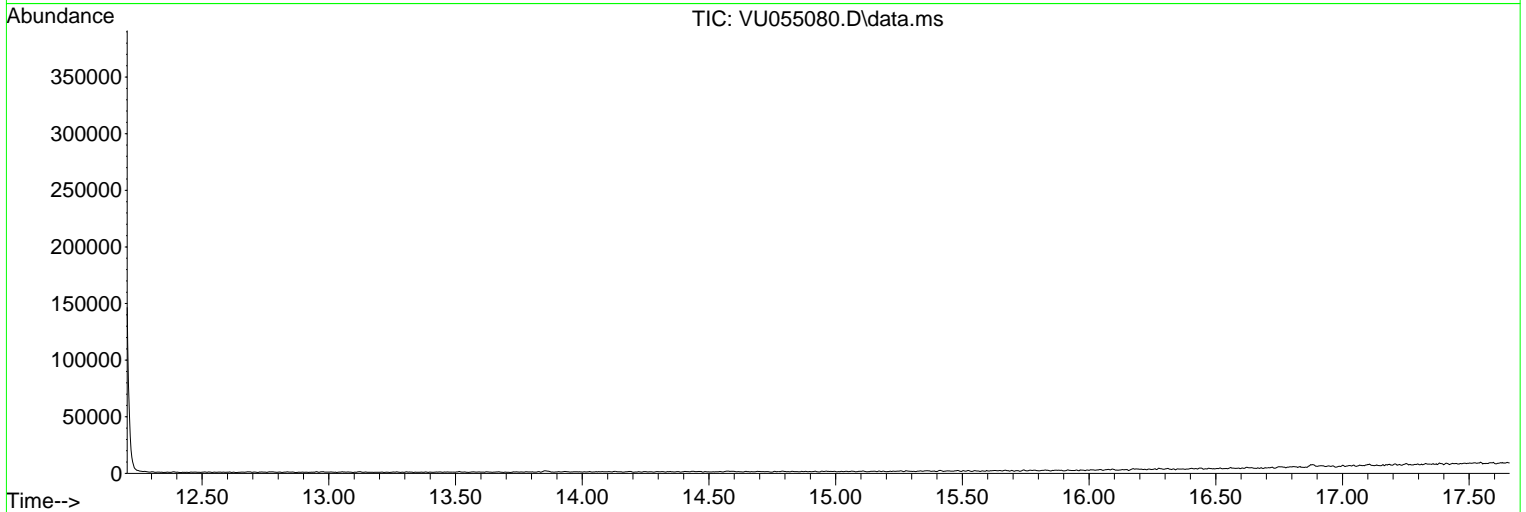
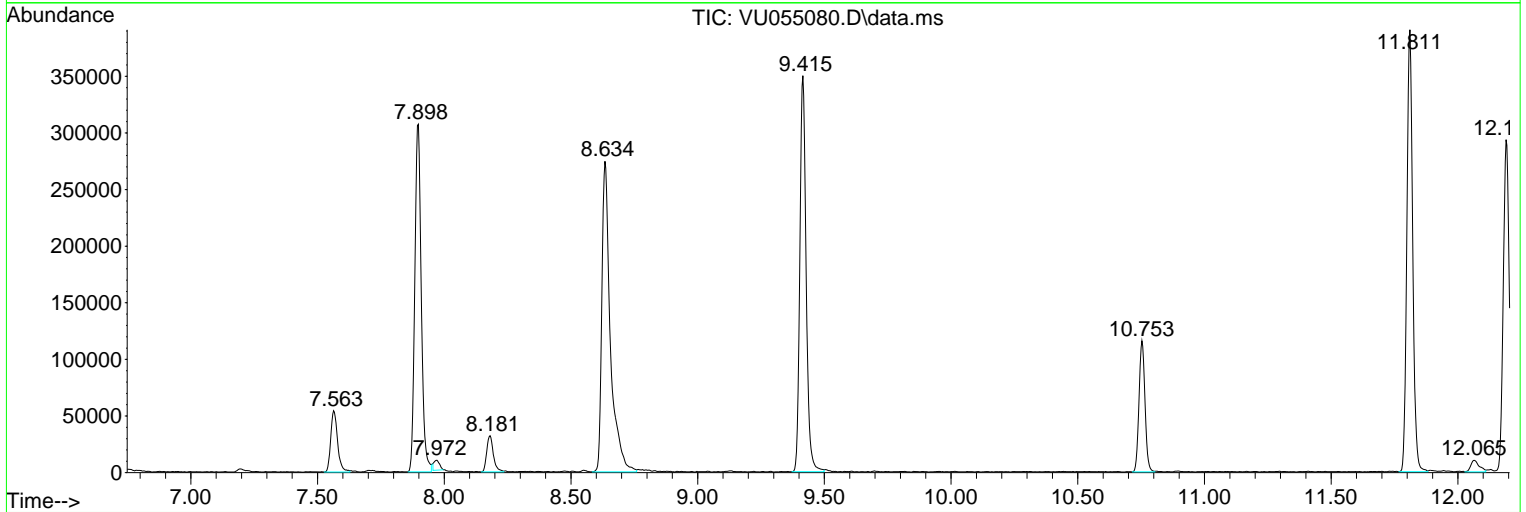
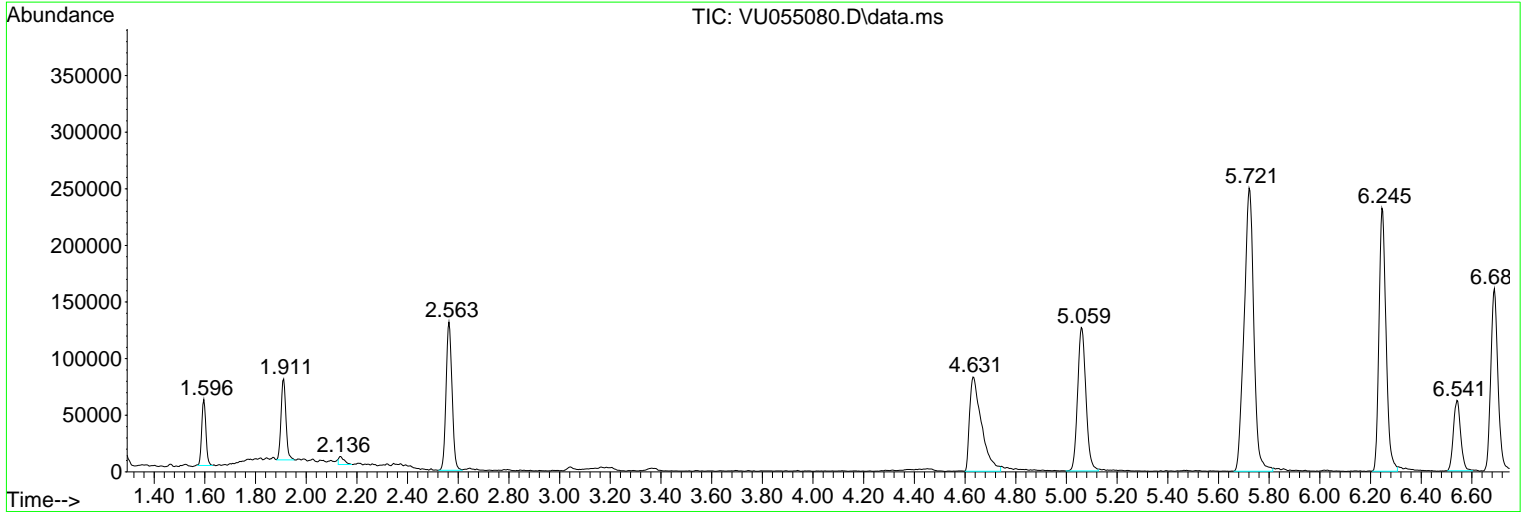
Sum of corrected areas: 5799239

Data Path : Z:\voasrv\HPCHEM1\MSVOA\_U\Data\VU090123\  
 Data File : VU055080.D  
 Acq On : 02 Sep 2023 07:32  
 Operator : MD/SY  
 Sample : 04250-18  
 Misc : 25.0mL/MSVOA\_U/WATER  
 ALS Vial : 50 Sample Multiplier: 1

Instrument :  
 MSVOA\_U  
 ClientSampleId :  
 BH4C4

Quant Method : Z:\voasrv\HPCHEM1\MSVOA\_U\Method\SFAMUTR090123WMA.M  
 Quant Title : TRACE VOA SFAM1.0

TIC Library : C:\Database\NIST20.L  
 TIC Integration Parameters: LSCINT.P



Library Search Compound Report

Data Path : Z:\voasrv\HPCHEM1\MSVOA\_U\Data\VU090123\  
Data File : VU055080.D  
Acq On : 02 Sep 2023 07:32  
Operator : MD/SY  
Sample : 04250-18  
Misc : 25.0mL/MSVOA\_U/WATER  
ALS Vial : 50 Sample Multiplier: 1

Instrument :  
MSVOA\_U  
ClientSampleId :  
BH4C4

Quant Method : Z:\voasrv\HPCHEM1\MSVOA\_U\Method\SFAMUTR090123WMA.M  
Quant Title : TRACE VOA SFAM1.0

TIC Library : C:\Database\NIST20.L  
TIC Integration Parameters: LSCINT.P

No Library Search Compounds Detected

\*\*\*\*\*

Data Path : Z:\voasrv\HPCHEM1\MSVOA\_U\Data\VU090123\  
Data File : VU055080.D  
Acq On : 02 Sep 2023 07:32  
Operator : MD/SY  
Sample : 04250-18  
Misc : 25.0mL/MSVOA\_U/WATER  
ALS Vial : 50 Sample Multiplier: 1

Instrument :  
MSVOA\_U  
ClientSampleId :  
BH4C4

Quant Method : Z:\voasrv\HPCHEM1\MSVOA\_U\Method\SFAMUTR090123WMA.M  
Quant Title : TRACE VOA SFAM1.0

TIC Library : C:\Database\NIST20.L  
TIC Integration Parameters: LSCINT.P

TIC Top Hit name	RT	EstConc	Units	Response	--Internal Standard--		
					#	RT	Resp Conc

---