

Data Path : Z:\VOASRV\HPCHEM1\MSVOA U\DATA\VU090220\  
 Data File : VU040025.D  
 Acq On : 02 Sep 2020 15:38  
 Operator : SY/MD  
 Sample : L3891-02  
 Misc : 25.0mL/MSVOA U/WATER  
 ALS Vial : 14 Sample Multiplier: 1

Instrument :  
 MSVOA\_U  
 ClientSampled :

Quant Time: Sep 03 01:22:14 2020  
 Quant Method : Z:\VOASRV\HPCHEM1\MSVOA\_U\METHOD\SOMUTR083120WMA.M  
 Quant Title : TRACE VOA SOM01.0  
 QLast Update : Thu Sep 03 01:16:12 2020  
 Response via : Initial Calibration

Internal Standards	R.T.	QIon	Response	Conc	Units	Dev(Min)
1) 1,4-Difluorobenzene	6.26	114	121782	5.00	ug/L	0.00
28) Chlorobenzene-d5	9.42	117	121796	5.00	ug/L	0.00
60) 1,4-Dichlorobenzene-d4	11.81	152	55566	5.00	ug/L	0.00

## System Monitoring Compounds

4) Vinyl Chloride-d3	1.60	65	27946	4.20	ug/L	0.00
Spiked Amount	5.000	Range	40 - 130	Recovery	=	84.00%
7) Chloroethane-d5	1.92	69	25506	4.60	ug/L	0.00
Spiked Amount	5.000	Range	65 - 130	Recovery	=	92.00%
11) 1,1-Dichloroethene-d2	2.58	63	50005	2.93	ug/L	0.00
Spiked Amount	5.000	Range	60 - 125	Recovery	=	58.60%#
20) 2-Butanone-d5	4.65	46	139058	52.29	ug/L	0.00
Spiked Amount	50.000	Range	40 - 130	Recovery	=	104.58%
24) Chloroform-d	5.08	84	69027	4.44	ug/L	0.00
Spiked Amount	5.000	Range	70 - 125	Recovery	=	88.80%
26) 1,2-Dichloroethane-d4	5.72	65	44478	4.64	ug/L	0.00
Spiked Amount	5.000	Range	70 - 130	Recovery	=	92.80%
32) Benzene-d6	5.74	84	127234	4.47	ug/L	0.00
Spiked Amount	5.000	Range	70 - 125	Recovery	=	89.40%
36) 1,2-Dichloropropane-d6	6.70	67	41577	4.43	ug/L	0.00
Spiked Amount	5.000	Range	60 - 140	Recovery	=	88.60%
41) Toluene-d8	7.90	98	107663	4.19	ug/L	0.00
Spiked Amount	5.000	Range	70 - 130	Recovery	=	83.80%
43) trans-1,3-Dichloropropene-	8.19	79	17769	4.13	ug/L	0.00
Spiked Amount	5.000	Range	55 - 130	Recovery	=	82.60%
46) 2-Hexanone-d5	8.64	63	97739	47.92	ug/L	0.00
Spiked Amount	50.000	Range	45 - 130	Recovery	=	95.84%
57) 1,1,2,2-Tetrachloroethane-	10.75	84	38283	4.72	ug/L	0.00
Spiked Amount	5.000	Range	65 - 120	Recovery	=	94.40%
64) 1,2-Dichlorobenzene-d4	12.19	152	42361	4.71	ug/L	0.00
Spiked Amount	5.000	Range	80 - 120	Recovery	=	94.20%

## Target Compounds

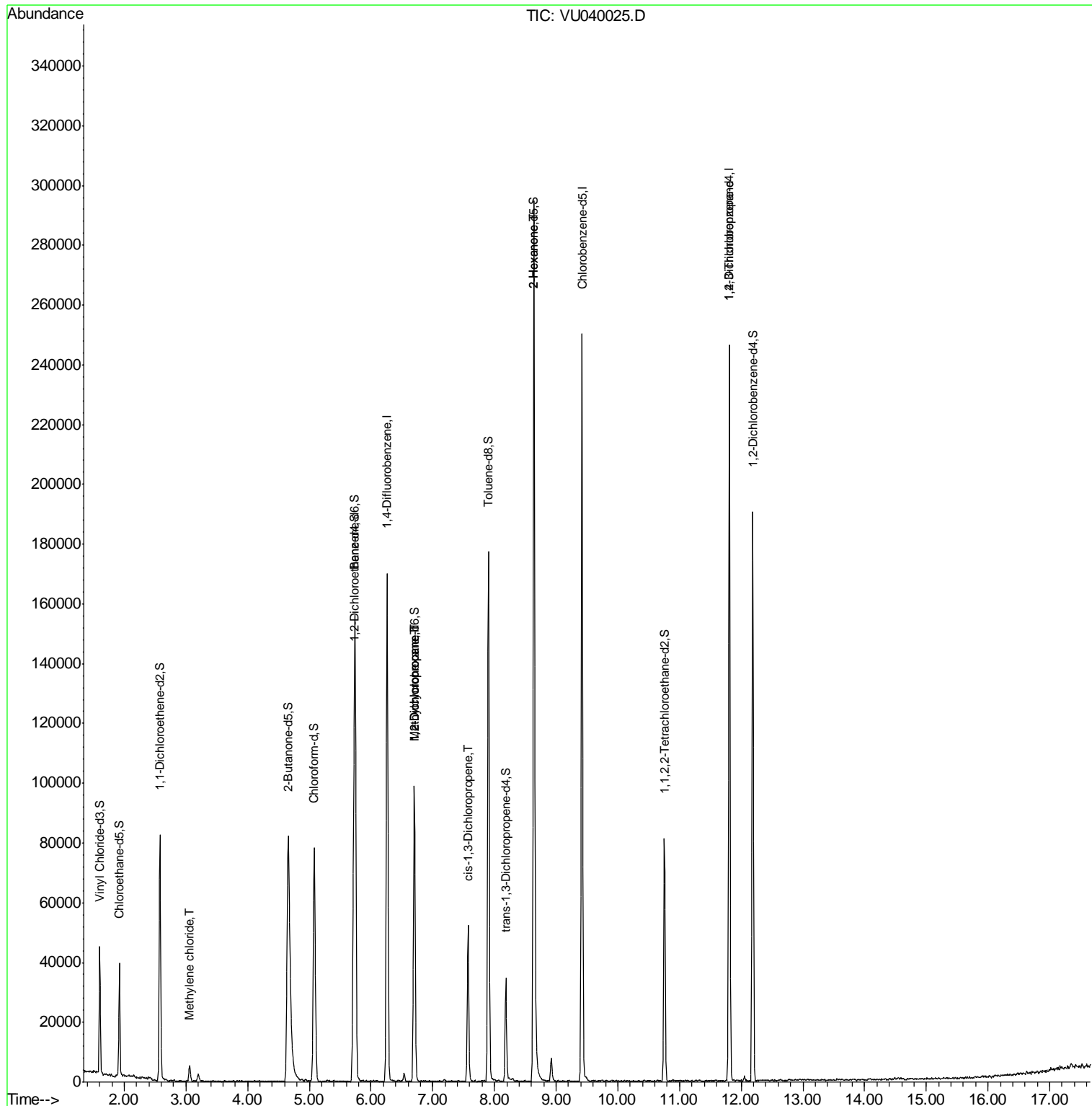
Target Compounds	R.T.	QIon	Response	Conc	Units	Ovalue
16) Methylene chloride	3.06	84	2561	0.207	ug/L	82
35) Methylcyclohexane	6.70	83	10124	0.566	ug/L #	14
37) 1,2-Dichloropropane	6.70	63	5438	0.461	ug/L #	88
39) cis-1,3-Dichloropropene	7.57	75	1488	0.086	ug/L #	64
48) 2-Hexanone	8.64	43	14366	2.035	ug/L #	70
59) 1,2,3-Trichloropropane	11.81	75	8891	1.017	ug/L #	85

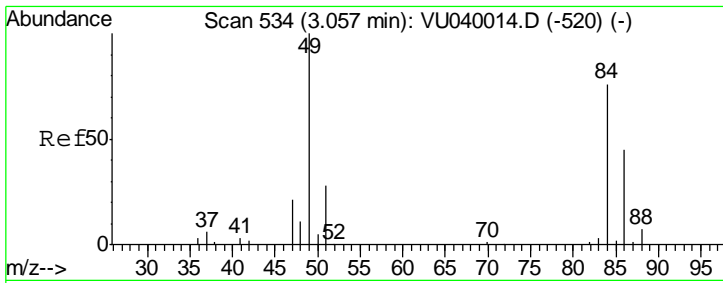
(#) = qualifier out of range (m) = manual integration (+) = signals summed

Data Path : Z:\VOASRV\HPCHEM1\MSVOA U\DATA\VU090220\  
 Data File : VU040025.D  
 Acq On : 02 Sep 2020 15:38  
 Operator : SY/MD  
 Sample : L3891-02  
 Misc : 25.0mL/MSVOA U/WATER  
 ALS Vial : 14 Sample Multiplier: 1

Instrument :  
 MSVOA\_U  
 Client Sampled :

Quant Time: Sep 03 01:22:14 2020  
 Quant Method : Z:\VOASRV\HPCHEM1\MSVOA\_U\METHOD\SOMUTR083120WMA.M  
 Quant Title : TRACE VOA SOM01.0  
 QLast Update : Thu Sep 03 01:16:12 2020  
 Response via : Initial Calibration

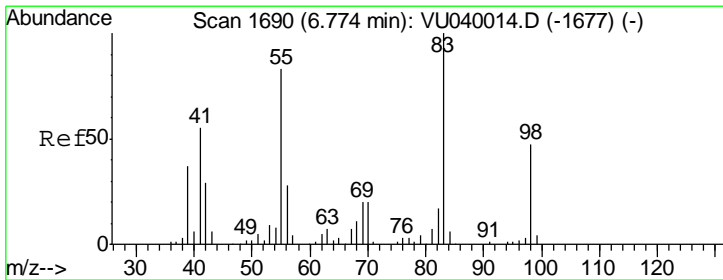
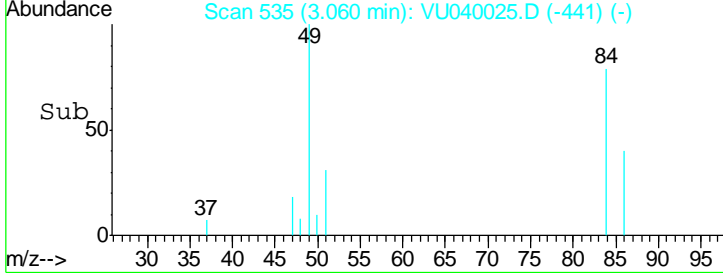
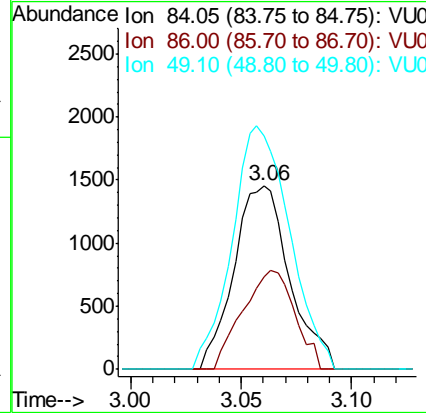
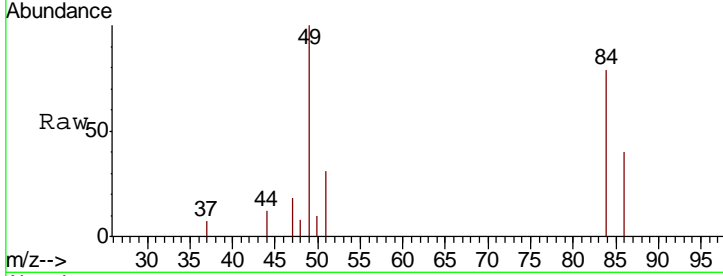




#16  
 Methylene chloride  
 Concen: 0.207 ug/L  
 RT: 3.06 min Scan# 535  
 Delta R.T. 0.00 min  
 Lab File: VU040025.D  
 Acq: 02 Sep 2020 15:38

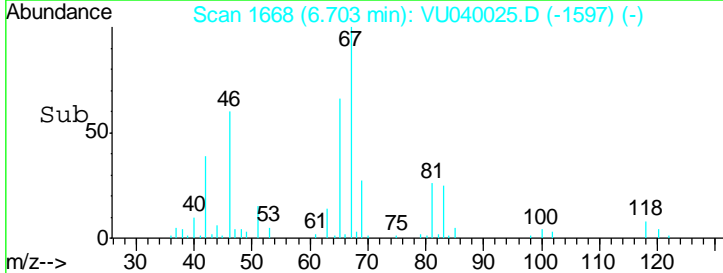
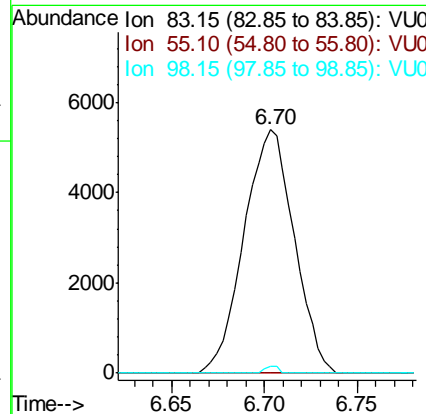
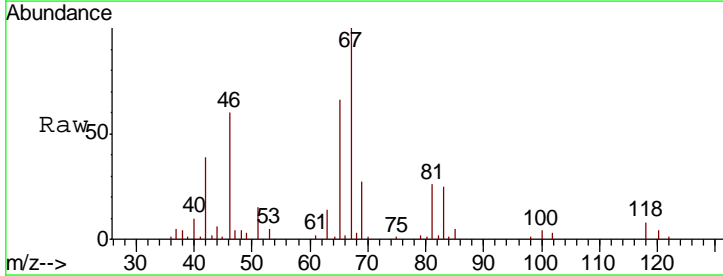
Instrument :  
 MSVOA\_U  
 ClientSampled :

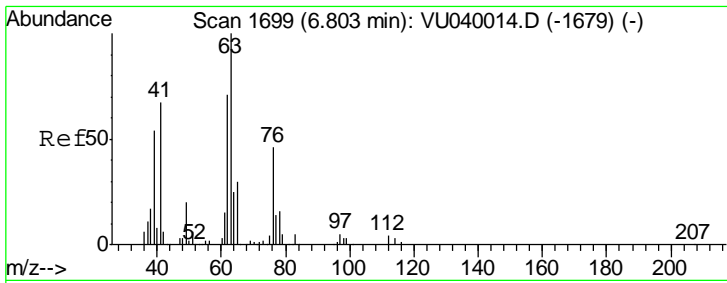
Tgt Ion	Resp	Lower	Upper
84	100		
86	50.5	45.2	84.0
49	126.5	104.0	193.2



#35  
 Methylcyclohexane  
 Concen: 0.566 ug/L  
 RT: 6.70 min Scan# 1668  
 Delta R.T. -0.07 min  
 Lab File: VU040025.D  
 Acq: 02 Sep 2020 15:38

Tgt Ion	Resp	Lower	Upper
83	100		
55	0.0	70.5	105.7#
98	0.8	37.8	56.6#

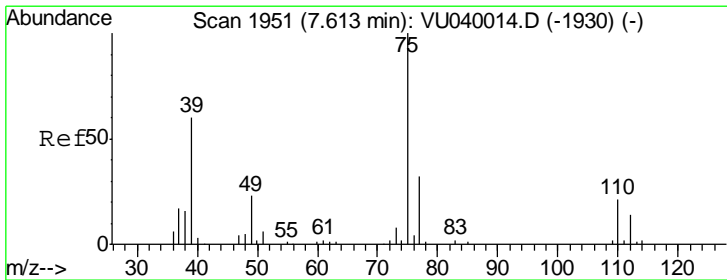
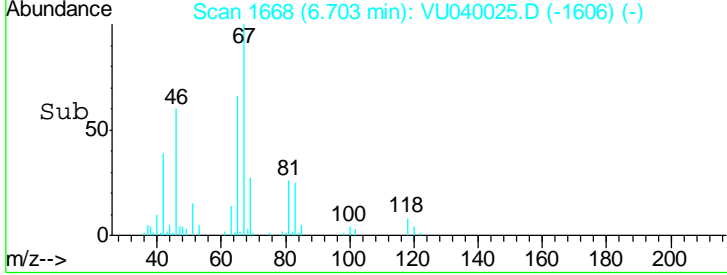
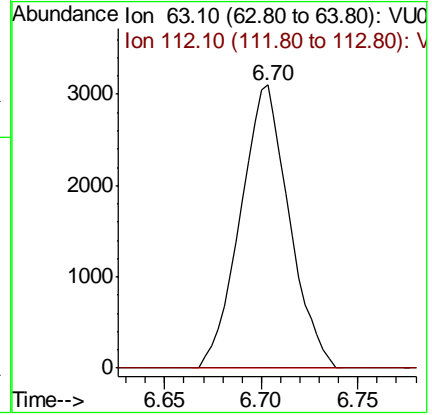
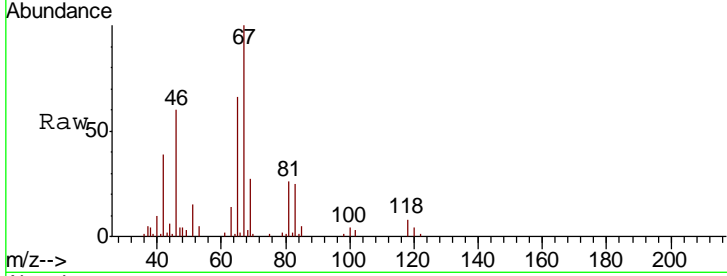




#37  
 1,2-Dichloropropane  
 Concen: 0.461 ug/L  
 RT: 6.70 min Scan# 1668  
 Delta R.T. -0.10 min  
 Lab File: VU040025.D  
 Acq: 02 Sep 2020 15:38

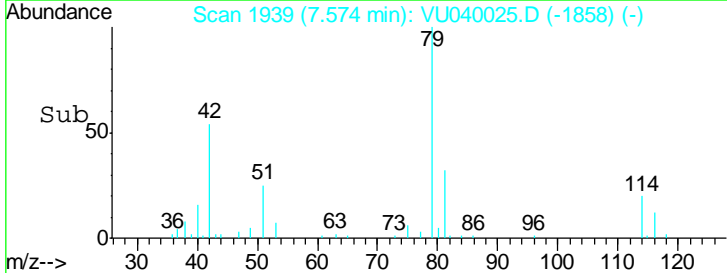
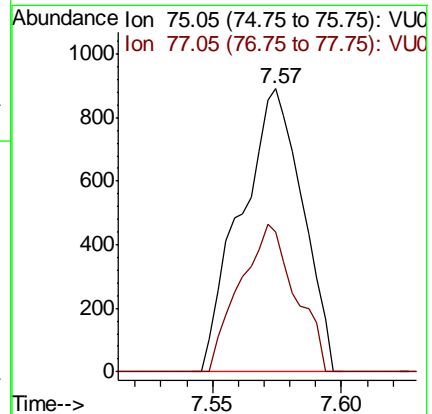
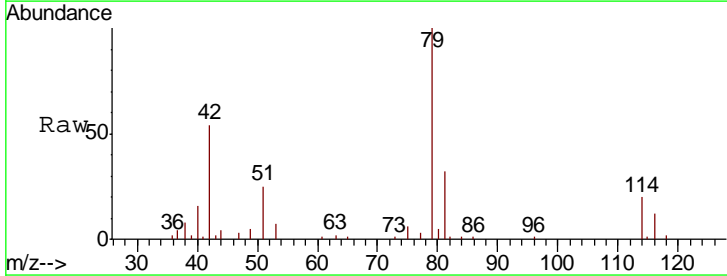
Instrument :  
 MSVOA\_U  
 ClientSampled :

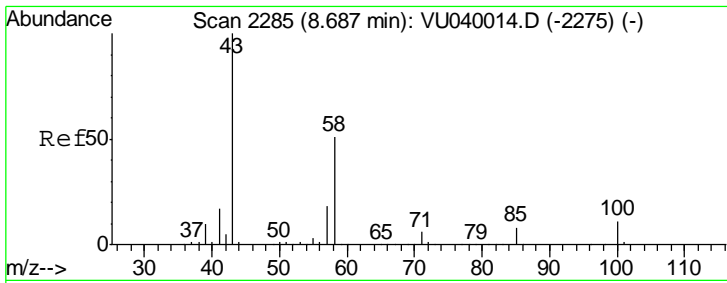
Tgt Ion	Resp	Lower	Upper
63	100		
112	0.0	3.2	4.8#



#39  
 cis-1,3-Dichloropropene  
 Concen: 0.086 ug/L  
 RT: 7.57 min Scan# 1939  
 Delta R.T. -0.04 min  
 Lab File: VU040025.D  
 Acq: 02 Sep 2020 15:38

Tgt Ion	Resp	Lower	Upper
75	100		
77	49.5	21.1	39.3#

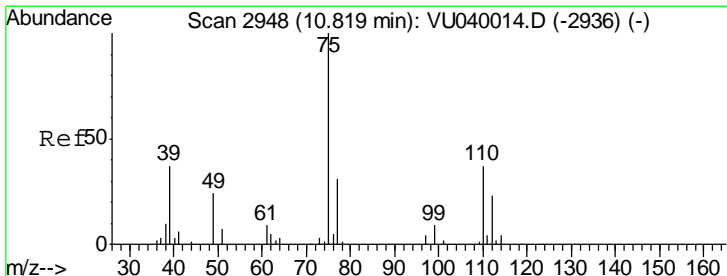
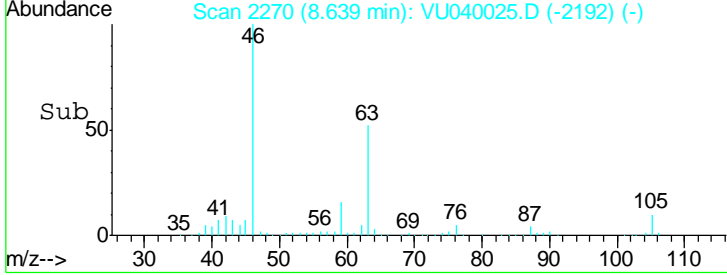
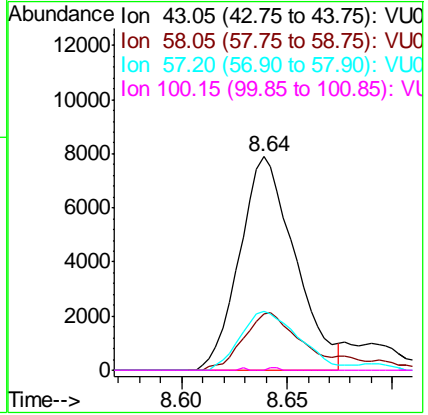
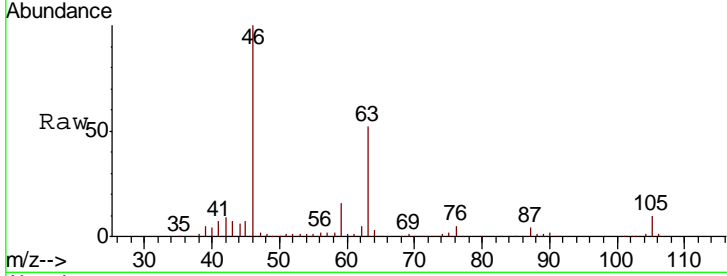




#48  
 2-Hexanone  
 Concen: 2.035 ug/L  
 RT: 8.64 min Scan# 2270  
 Delta R.T. -0.05 min  
 Lab File: VU040025.D  
 Acq: 02 Sep 2020 15:38

Instrument :  
 MSVOA\_U  
 ClientSampled :

Tgt Ion	Resp	Lower	Upper
43	14366		
58	27.1	39.6	59.4#
57	29.2	14.3	21.5#
100	0.3	8.0	12.0#



#59  
 1,2,3-Trichloropropane  
 Concen: 1.017 ug/L  
 RT: 11.81 min Scan# 3255  
 Delta R.T. 0.99 min  
 Lab File: VU040025.D  
 Acq: 02 Sep 2020 15:38

Tgt Ion	Resp	Lower	Upper
75	8891		
77	39.1	24.9	37.3#

