

Data Path : Z:\VOASRV\HPCHEM1\MSVOA U\DATA\VU090220\
 Data File : VU040020.D
 Acq On : 02 Sep 2020 12:35
 Operator : SY/MD
 Sample : MDL05
 Misc : 25.0mL/MSVOA U/WATER
 ALS Vial : 9 Sample Multiplier: 1

Instrument :
 MSVOA_U
 Client Sampled :
 MDL05

Manual Integrations
 APPROVED

MMDadoda
 9/4/2020 2:20:40 PM

Quant Time: Sep 03 01:51:11 2020
 Quant Method : Z:\VOASRV\HPCHEM1\MSVOA_U\METHOD\SOMUTR083120WMA.M
 Quant Title : TRACE VOA SOM01.0
 QLast Update : Thu Sep 03 01:16:12 2020
 Response via : Initial Calibration

Internal Standards	R.T.	QIon	Response	Conc	Units	Dev(Min)
1) 1,4-Difluorobenzene	6.26	114	118597	5.00	ug/L	0.00
28) Chlorobenzene-d5	9.42	117	116746	5.00	ug/L	0.00
60) 1,4-Dichlorobenzene-d4	11.81	152	54315	5.00	ug/L	0.00

System Monitoring Compounds

4) Vinyl Chloride-d3	1.60	65	27346	4.22	ug/L	0.00
Spiked Amount	5.000	Range	40 - 130	Recovery	=	84.40%
7) Chloroethane-d5	1.92	69	25813	4.79	ug/L	0.00
Spiked Amount	5.000	Range	65 - 130	Recovery	=	95.80%
11) 1,1-Dichloroethene-d2	2.58	63	50828	3.06	ug/L	0.00
Spiked Amount	5.000	Range	60 - 125	Recovery	=	61.20%
20) 2-Butanone-d5	4.66	46	134549	51.95	ug/L	0.00
Spiked Amount	50.000	Range	40 - 130	Recovery	=	103.90%
24) Chloroform-d	5.08	84	65659	4.34	ug/L	0.00
Spiked Amount	5.000	Range	70 - 125	Recovery	=	86.80%
26) 1,2-Dichloroethane-d4	5.72	65	42131	4.51	ug/L	0.00
Spiked Amount	5.000	Range	70 - 130	Recovery	=	90.20%
32) Benzene-d6	5.75	84	122317	4.49	ug/L	0.00
Spiked Amount	5.000	Range	70 - 125	Recovery	=	89.80%
36) 1,2-Dichloropropane-d6	6.70	67	40423	4.50	ug/L	0.00
Spiked Amount	5.000	Range	60 - 140	Recovery	=	90.00%
41) Toluene-d8	7.91	98	106124	4.31	ug/L	0.00
Spiked Amount	5.000	Range	70 - 130	Recovery	=	86.20%
43) trans-1,3-Dichloropropene-	8.19	79	17173	4.16	ug/L	0.00
Spiked Amount	5.000	Range	55 - 130	Recovery	=	83.20%
46) 2-Hexanone-d5	8.64	63	96467	49.35	ug/L	0.00
Spiked Amount	50.000	Range	45 - 130	Recovery	=	98.70%
57) 1,1,2,2-Tetrachloroethane-	10.75	84	36886	4.75	ug/L	0.00
Spiked Amount	5.000	Range	65 - 120	Recovery	=	95.00%
64) 1,2-Dichlorobenzene-d4	12.19	152	41997	4.78	ug/L	0.00
Spiked Amount	5.000	Range	80 - 120	Recovery	=	95.60%

Target Compounds

Target Compounds	R.T.	QIon	Response	Conc	Units	Ovalue
2) Dichlorodifluoromethane	1.39	85	2174	0.185	ug/L	94
3) Chloromethane	1.53	50	2619	0.232	ug/L	98
5) Vinyl chloride	1.61	62	2335	0.204	ug/L #	77
6) Bromomethane	1.87	94	1167	0.200	ug/L	95
8) Chloroethane	1.94	64	1649	0.240	ug/L	99
9) Trichlorofluoromethane	2.15	101	3296	0.201	ug/L	99
10) 1,1,2-Trichloro-1,2,2-trif	2.59	101	2503	0.236	ug/L #	67
12) 1,1-Dichloroethene	2.59	96	2003	0.218	ug/L #	1
13) Acetone	2.67	43	4904m	2.045	ug/L	
14) Carbon disulfide	2.81	76	5419	0.184	ug/L	100
15) Methyl Acetate	2.98	43	960	0.160	ug/L #	71
16) Methylene chloride	3.06	84	3992	0.332	ug/L	95
17) Methyl tert-butyl Ether	3.39	73	4918	0.178	ug/L #	92
18) trans-1,2-Dichloroethene	3.37	96	1746	0.177	ug/L	97
19) 1,1-Dichloroethane	3.89	63	3712	0.183	ug/L	90
21) 2-Butanone	4.74	43	8274	2.114	ug/L	79
22) cis-1,2-Dichloroethene	4.69	96	1949	0.184	ug/L	86

Data Path : Z:\VOASRV\HPCHEM1\MSVOA U\DATA\VU090220\
 Data File : VU040020.D
 Acq On : 02 Sep 2020 12:35
 Operator : SY/MD
 Sample : MDL05
 Misc : 25.0mL/MSVOA U/WATER
 ALS Vial : 9 Sample Multiplier: 1

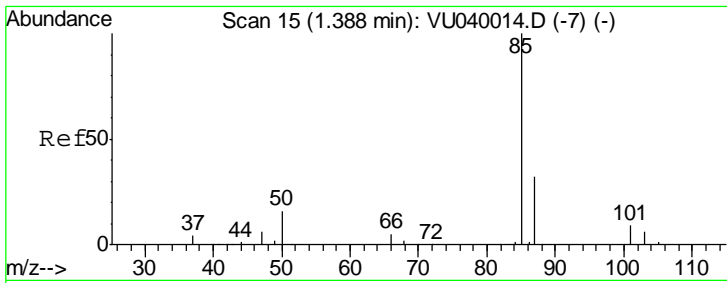
Instrument :
 MSVOA_U
Client Sampled :
 MDL05

Manual Integrations
APPROVED
 MMDadoda
 9/4/2020 2:20:40 PM

Quant Time: Sep 03 01:51:11 2020
 Quant Method : Z:\VOASRV\HPCHEM1\MSVOA_U\METHOD\SOMUTR083120WMA.M
 Quant Title : TRACE VOA SOM01.0
 QLast Update : Thu Sep 03 01:16:12 2020
 Response via : Initial Calibration

Internal Standards	R.T.	QIon	Response	Conc	Units	Dev(Min)
23) Bromochloromethane	5.00	128	917m	0.197	ug/L	
25) Chloroform	5.11	83	6525	0.314	ug/L	88
27) 1,2-Dichloroethane	5.81	62	3298	0.216	ug/L #	91
29) 1,1,1-Trichloroethane	5.34	97	3184	0.174	ug/L	96
30) Cyclohexane	5.40	56	3226	0.181	ug/L	99
31) Carbon tetrachloride	5.54	117	3122	0.199	ug/L	83
33) Benzene	5.79	78	7744	0.185	ug/L	100
34) Trichloroethene	6.55	95	2270	0.203	ug/L	92
35) Methylcyclohexane	6.77	83	3099	0.181	ug/L #	89
37) 1,2-Dichloropropane	6.80	63	2292	0.203	ug/L #	88
38) Bromodichloromethane	7.11	83	3106	0.201	ug/L #	92
39) cis-1,3-Dichloropropene	7.62	75	3024	0.181	ug/L	97
40) 4-Methyl-2-pentanone	7.80	43	16686	1.798	ug/L #	89
42) Toluene	7.98	91	8472	0.197	ug/L	96
44) trans-1,3-Dichloropropene	8.22	75	3040	0.197	ug/L #	40
45) 1,1,2-Trichloroethane	8.40	97	1681	0.204	ug/L	86
47) Tetrachloroethene	8.56	164	1444	0.196	ug/L	95
48) 2-Hexanone	8.69	43	15412	2.277	ug/L	97
49) Dibromochloromethane	8.82	129	1699	0.172	ug/L	90
50) 1,2-Dibromoethane	8.93	107	1452	0.183	ug/L #	98
51) Chlorobenzene	9.45	112	5189	0.194	ug/L	95
52) Ethylbenzene	9.57	91	8760	0.179	ug/L	87
53) m,p-Xylene	9.69	106	3075	0.177	ug/L	91
54) o-Xylene	10.10	106	2827	0.171	ug/L	92
55) Styrene	10.11	104	4708	0.163	ug/L	99
56) Isopropylbenzene	10.48	105	7718	0.171	ug/L	99
58) 1,1,2,2-Tetrachloroethane	10.78	83	2353	0.223	ug/L	94
59) 1,2,3-Trichloropropane	10.82	75	1644m	0.196	ug/L	
61) Bromoform	10.29	173	993	0.199	ug/L #	95
62) 1,3-Dichlorobenzene	11.74	146	4058	0.204	ug/L	92
63) 1,4-Dichlorobenzene	11.83	146	4402	0.219	ug/L	87
65) 1,2-Dichlorobenzene	12.20	146	4010	0.209	ug/L	90
66) 1,2-Dibromo-3-chloropropan	13.00	75	325	0.158	ug/L	95
67) 1,3,5-Trichlorobenzene	13.21	180	2839m	0.203	ug/L	
68) 1,2,4-trichlorobenzene	13.83	180	2297	0.191	ug/L	93
69) Naphthalene	14.08	128	3678	0.147	ug/L #	92
70) 1,2,3-Trichlorobenzene	14.32	180	2066	0.187	ug/L	85

(#) = qualifier out of range (m) = manual integration (+) = signals summed

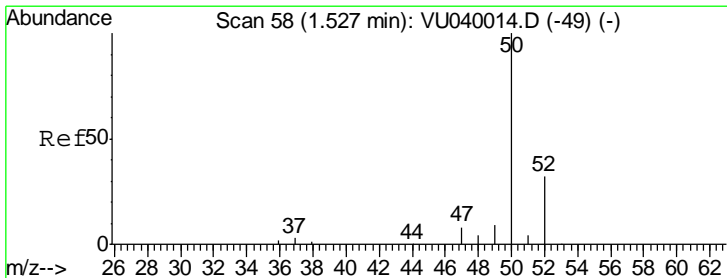
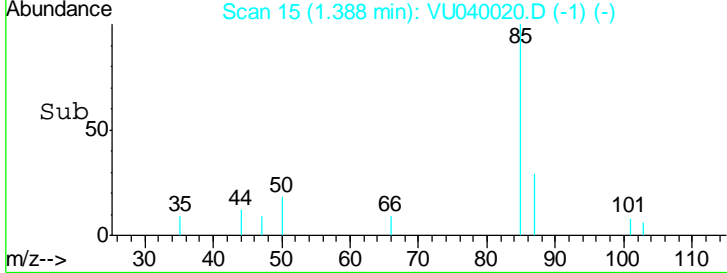
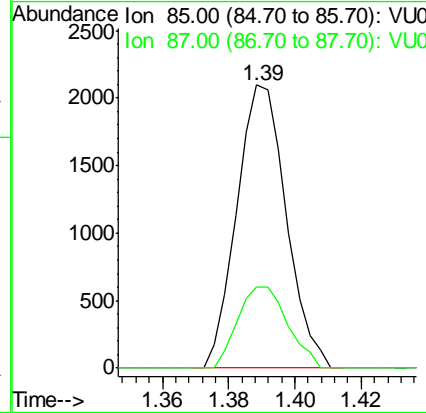
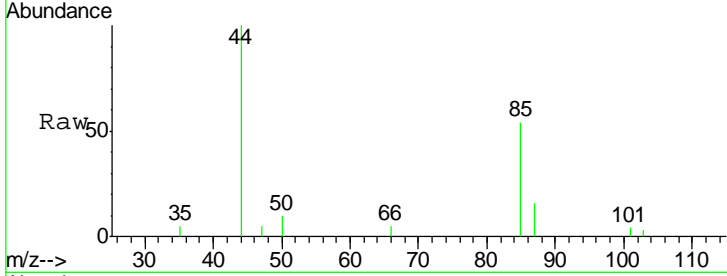


#2
 Dichlorodifluoromethane
 Concen: 0.185 ug/L
 RT: 1.39 min Scan# 15
 Delta R.T. 0.00 min
 Lab File: VU040020.D
 Acq: 02 Sep 2020 12:35

Instrument : MSVOA_U
 ClientSampled : MDL05

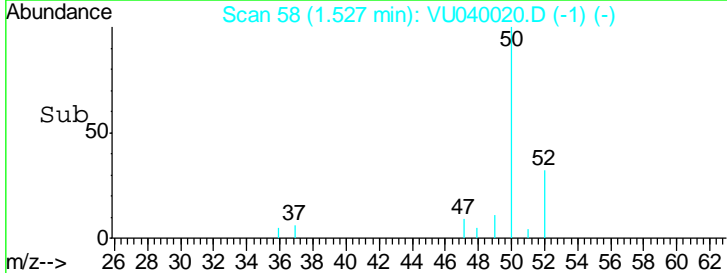
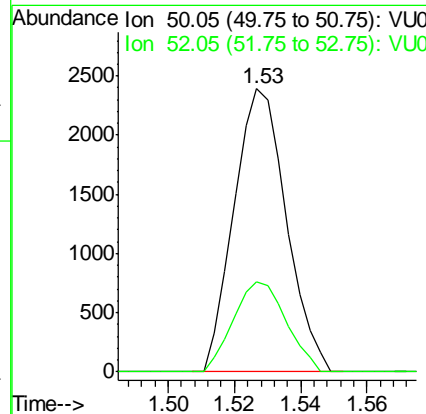
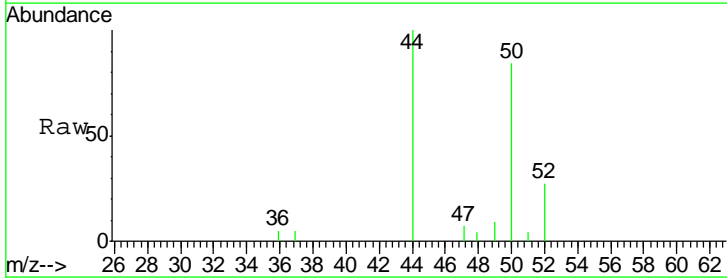
Tgt Ion	Resp	Lower	Upper
85	2174		
85	100		
87	28.9	25.9	38.9

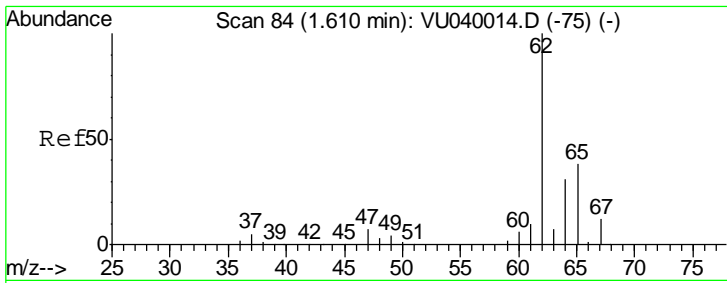
Manual Integrations
APPROVED
 MMDadoda
 9/4/2020 2:20:40 PM



#3
 Chloromethane
 Concen: 0.232 ug/L
 RT: 1.53 min Scan# 58
 Delta R.T. 0.00 min
 Lab File: VU040020.D
 Acq: 02 Sep 2020 12:35

Tgt Ion	Resp	Lower	Upper
50	2619		
50	100		
52	31.6	22.8	42.4





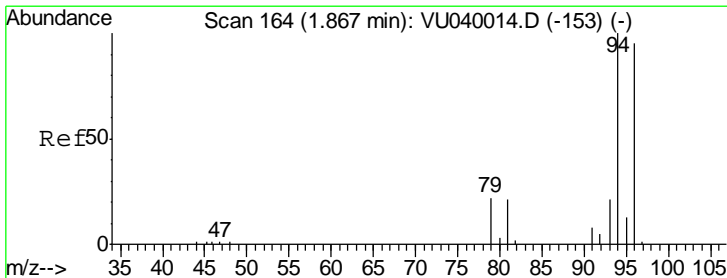
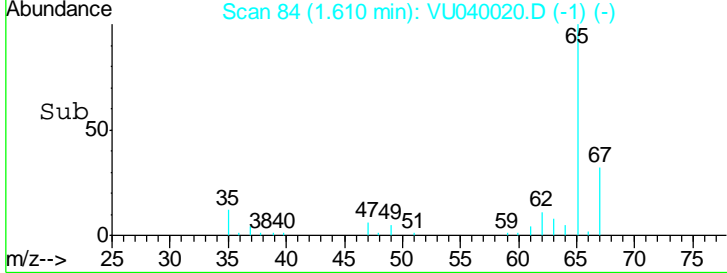
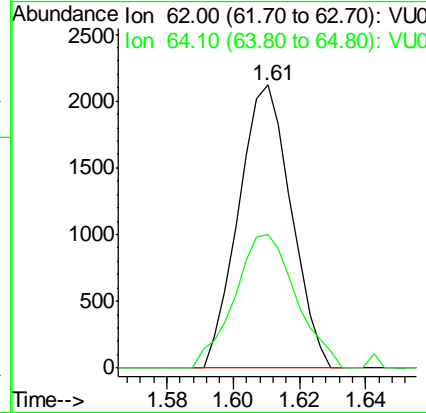
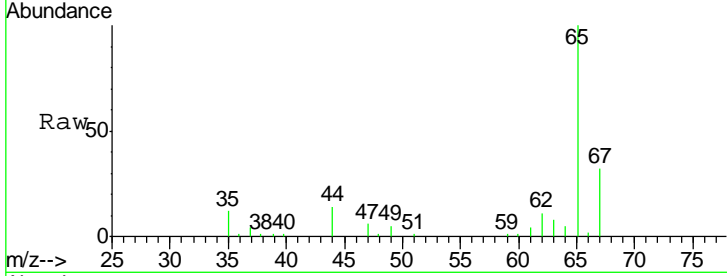
#5
 Vinyl chloride
 Concen: 0.204 ug/L
 RT: 1.61 min Scan# 84
 Delta R.T. 0.00 min
 Lab File: VU040020.D
 Acq: 02 Sep 2020 12:35

Instrument : MSVOA_U
 ClientSampled : MDL05

Tgt Ion	Resp	Lower	Upper
62	100		
64	47.1	23.9	44.3#

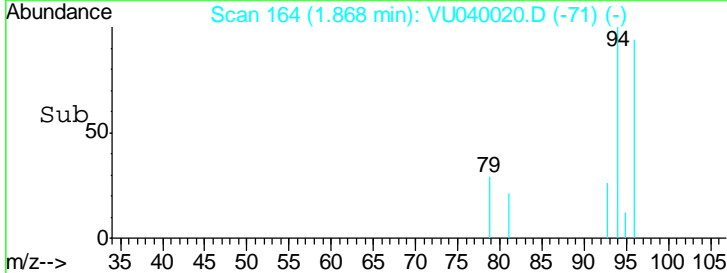
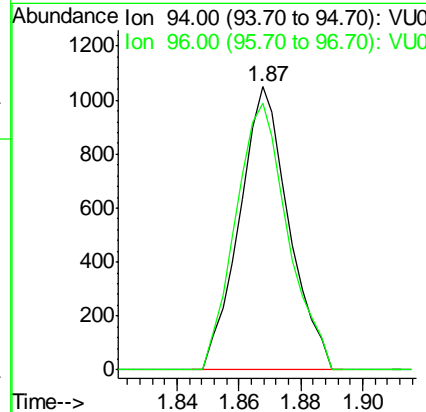
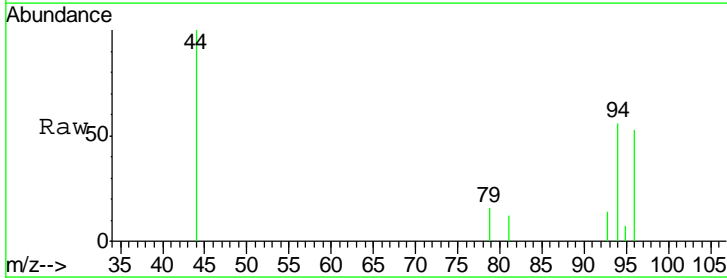
Manual Integrations
 APPROVED

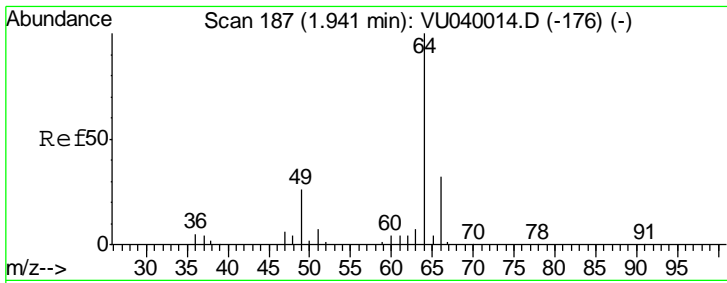
MMDadoda
 9/4/2020 2:20:40 PM



#6
 Bromomethane
 Concen: 0.200 ug/L
 RT: 1.87 min Scan# 164
 Delta R.T. 0.00 min
 Lab File: VU040020.D
 Acq: 02 Sep 2020 12:35

Tgt Ion	Resp	Lower	Upper
94	100		
96	94.1	62.3	115.7





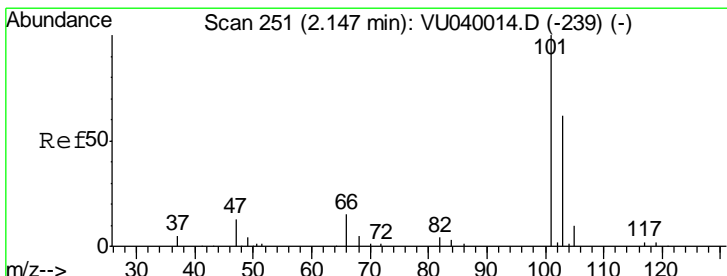
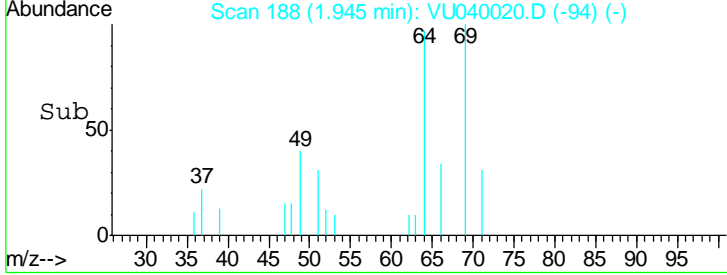
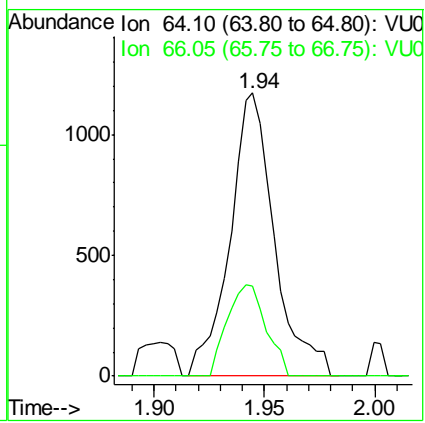
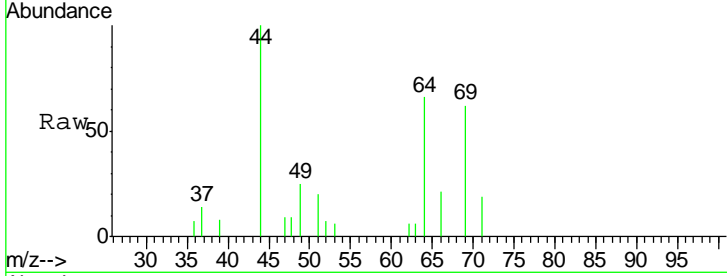
#8
 Chloroethane
 Concen: 0.240 ug/L
 RT: 1.94 min Scan# 188
 Delta R.T. 0.00 min
 Lab File: VU040020.D
 Acq: 02 Sep 2020 12:35

Instrument :
 MSVOA_U
ClientSampled :
 MDL05

Tgt Ion: 64 Resp: 1649

Ion	Ratio	Lower	Upper
64	100		
66	31.8	22.7	42.1

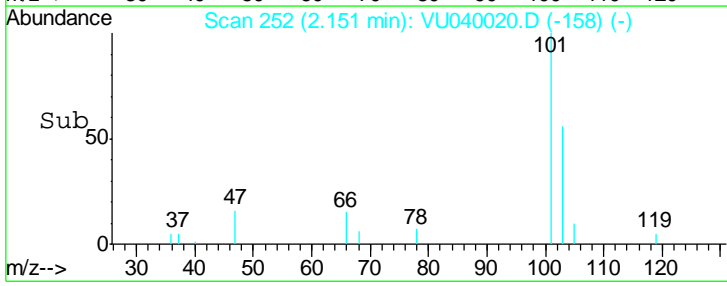
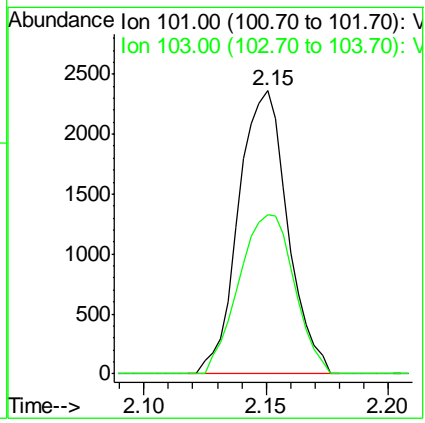
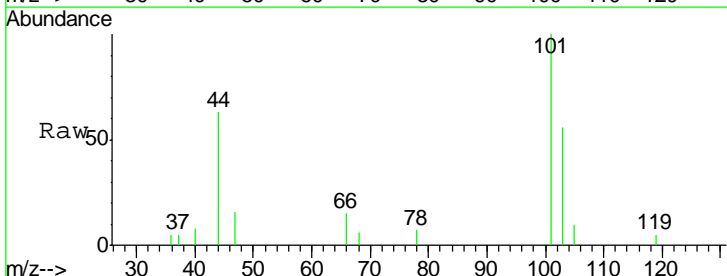
Manual Integrations
APPROVED
 MMDadoda
 9/4/2020 2:20:40 PM

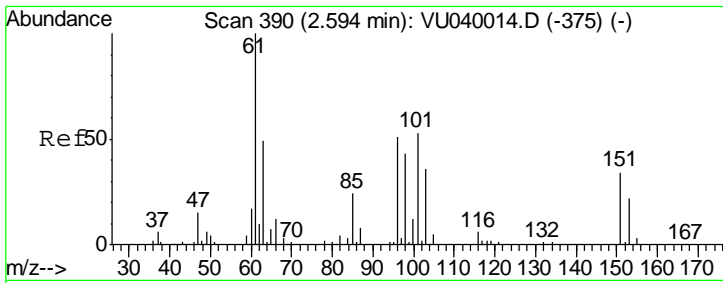


#9
 Trichlorofluoromethane
 Concen: 0.201 ug/L
 RT: 2.15 min Scan# 252
 Delta R.T. 0.00 min
 Lab File: VU040020.D
 Acq: 02 Sep 2020 12:35

Tgt Ion: 101 Resp: 3296

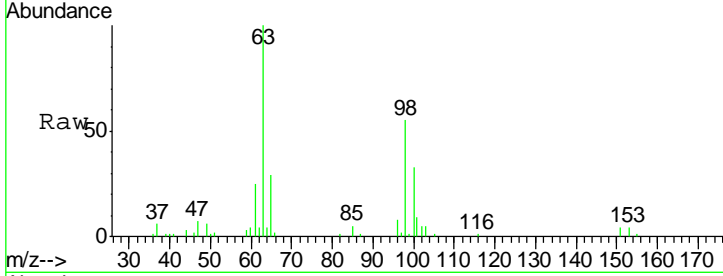
Ion	Ratio	Lower	Upper
101	100		
103	63.5	51.3	76.9





#10
 1,1,2-Trichloro-1,2,2-trifluoroethane
 Concen: 0.236 ug/L
 RT: 2.59 min Scan# 390
 Delta R.T. 0.00 min
 Lab File: VU040020.D
 Acq: 02 Sep 2020 12:35

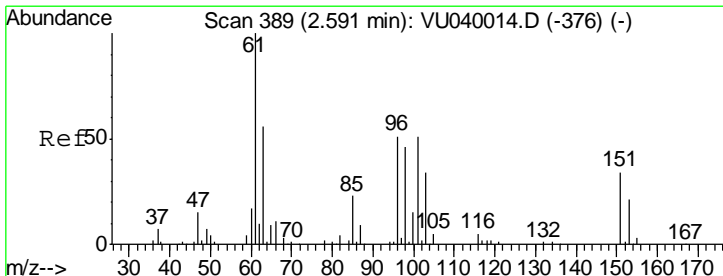
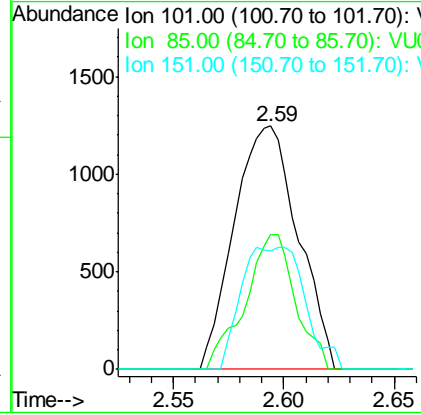
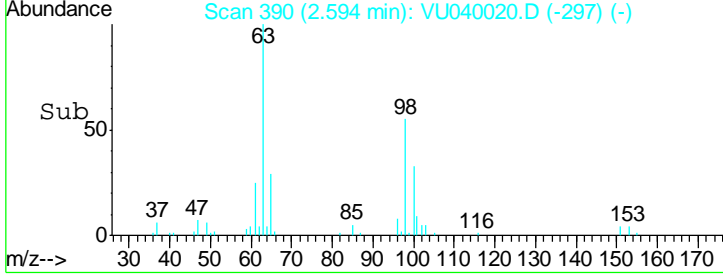
Instrument :
 MSVOA_U
ClientSampled :
 MDL05



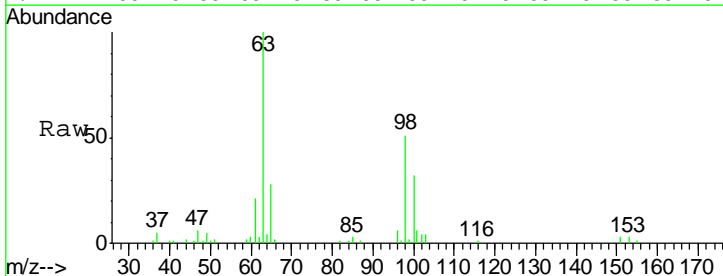
Tgt Ion	Resp	Lower	Upper
101	2503		
101	100		
85	43.8	37.7	56.5
151	25.6	53.9	80.9#

Manual Integrations
APPROVED

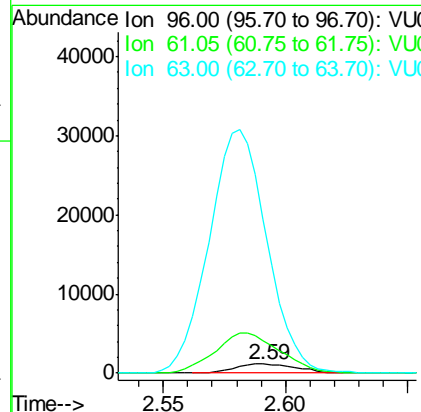
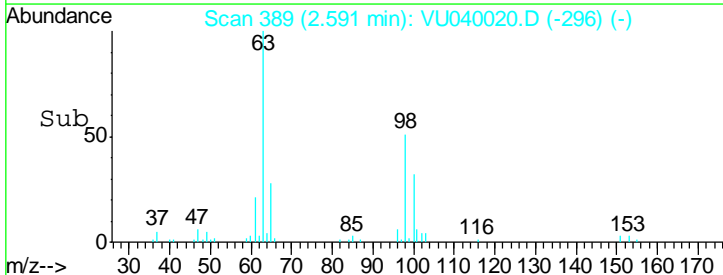
MMDadoda
 9/4/2020 2:20:40 PM

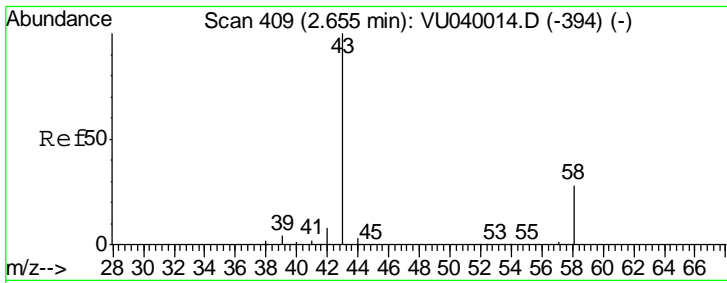


#12
 1,1-Dichloroethene
 Concen: 0.218 ug/L
 RT: 2.59 min Scan# 389
 Delta R.T. 0.00 min
 Lab File: VU040020.D
 Acq: 02 Sep 2020 12:35



Tgt Ion	Resp	Lower	Upper
96	2003		
96	100		
61	348.9	138.3	256.8#
63	1692.4	77.6	144.2#



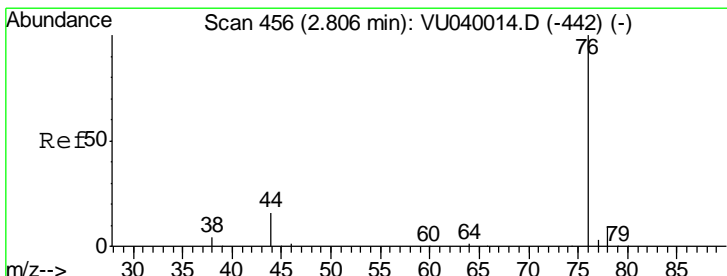
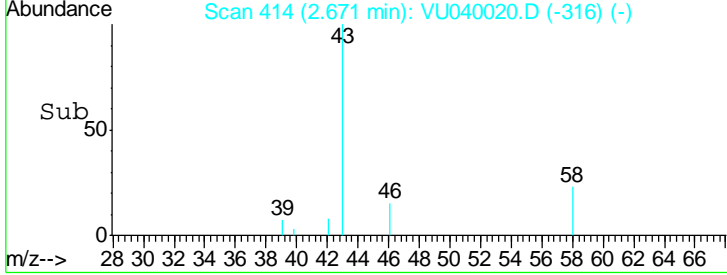
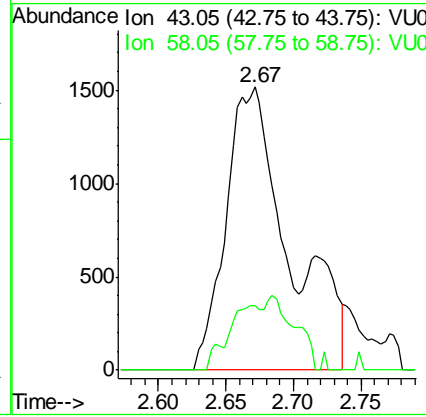
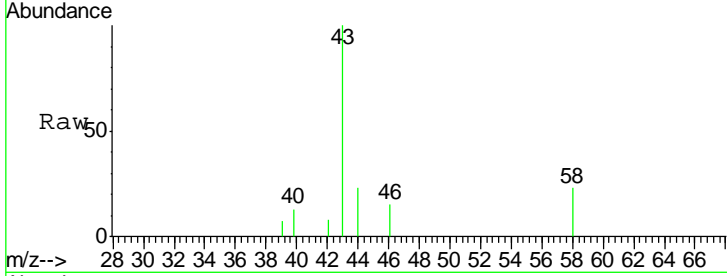


#13
 Acetone
 Concen: 2.045 ug/L m
 RT: 2.67 min Scan# 414
 Delta R.T. 0.02 min
 Lab File: VU040020.D
 Acq: 02 Sep 2020 12:35

Instrument :
 MSVOA_U
ClientSampled :
 MDL05

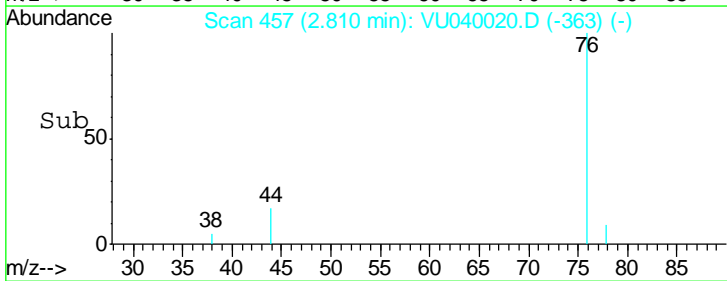
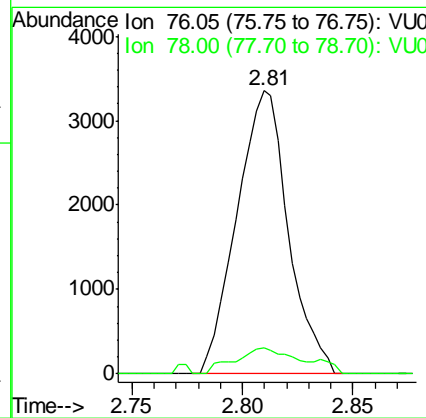
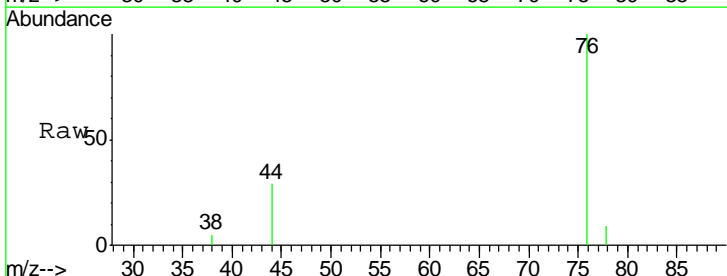
Tgt Ion	Ratio	Lower	Upper
43	100		
58	11.6	0.0	55.4

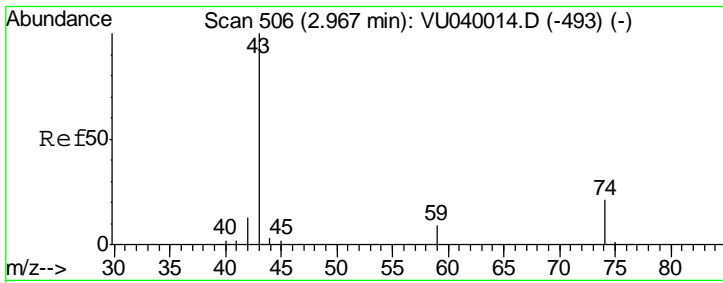
Manual Integrations
APPROVED
 MMDadoda
 9/4/2020 2:20:40 PM



#14
 Carbon disulfide
 Concen: 0.184 ug/L
 RT: 2.81 min Scan# 457
 Delta R.T. 0.00 min
 Lab File: VU040020.D
 Acq: 02 Sep 2020 12:35

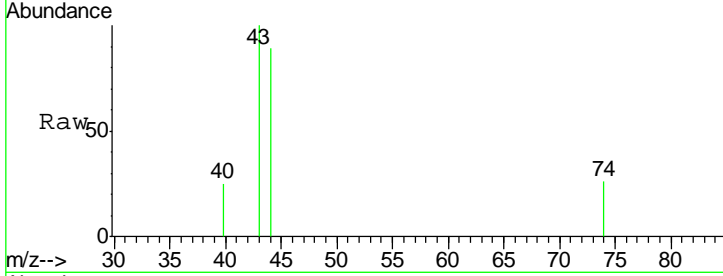
Tgt Ion	Ratio	Lower	Upper
76	100		
78	9.1	7.2	10.8





#15
Methyl Acetate
Concen: 0.160 ug/L
RT: 2.98 min Scan# 510
Delta R.T. 0.01 min
Lab File: VU040020.D
Acq: 02 Sep 2020 12:35

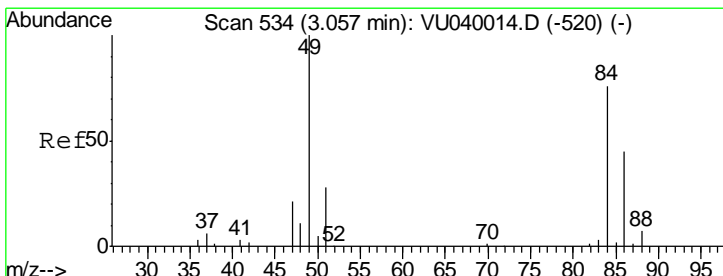
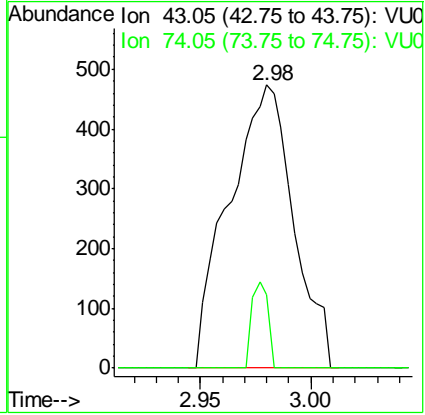
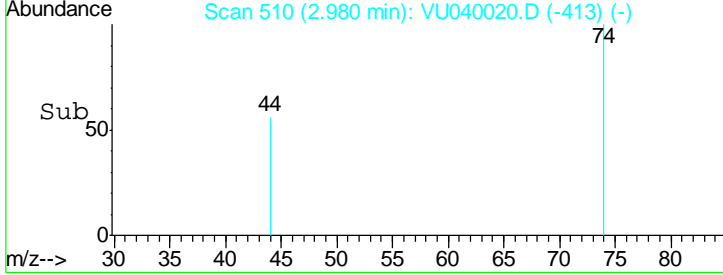
Instrument : MSVOA_U
ClientSampled : MDL05



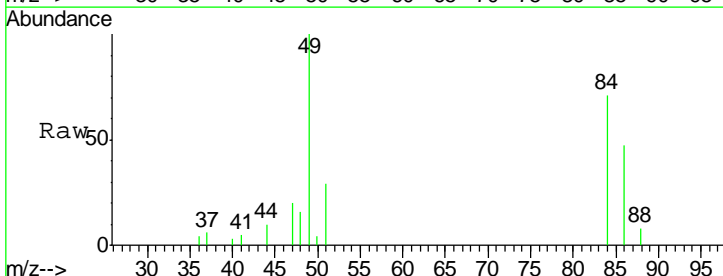
Tgt Ion: 43 Resp: 960

Ion	Ratio	Lower	Upper
43	100		
74	7.8	17.4	26.0#

Manual Integrations APPROVED
MMDadoda
9/4/2020 2:20:40 PM

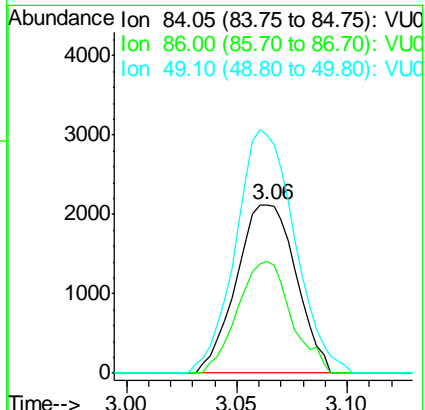
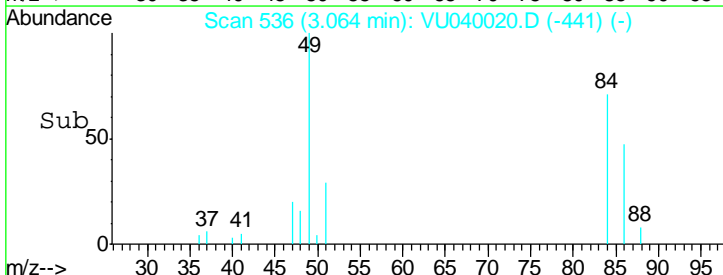


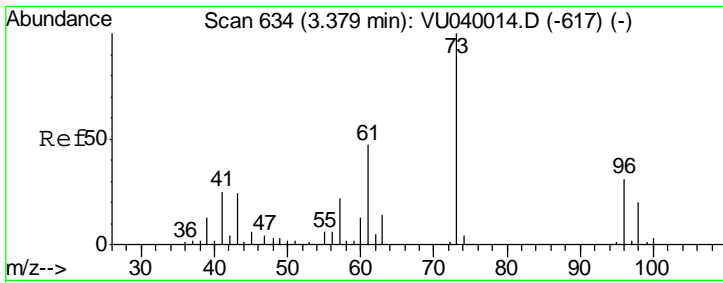
#16
Methylene chloride
Concen: 0.332 ug/L
RT: 3.06 min Scan# 536
Delta R.T. 0.01 min
Lab File: VU040020.D
Acq: 02 Sep 2020 12:35



Tgt Ion: 84 Resp: 3992

Ion	Ratio	Lower	Upper
84	100		
86	66.6	45.2	84.0
49	141.7	104.0	193.2





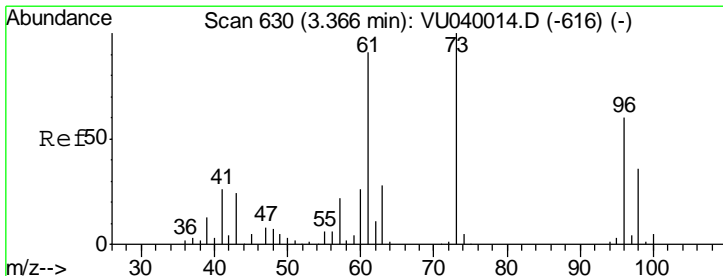
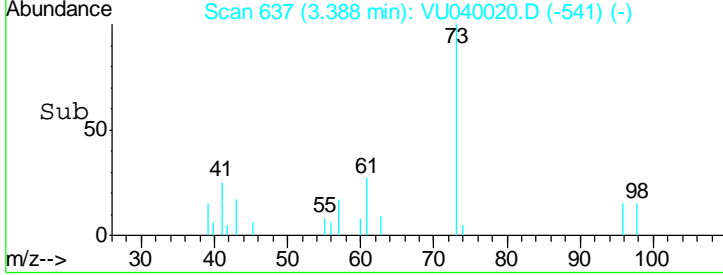
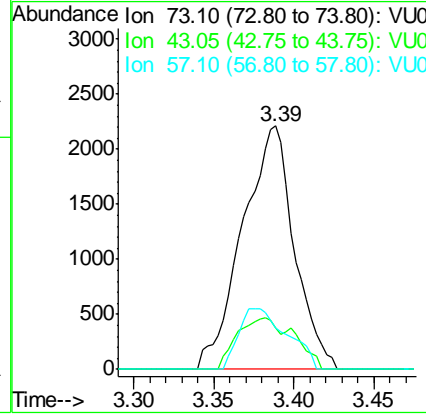
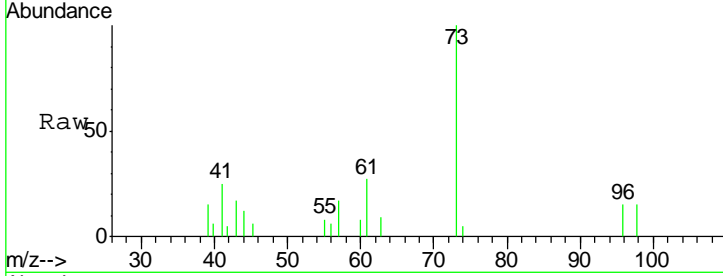
#17
 Methyl tert-butyl Ether
 Concen: 0.178 ug/L
 RT: 3.39 min Scan# 637
 Delta R.T. 0.01 min
 Lab File: VU040020.D
 Acq: 02 Sep 2020 12:35

Instrument : MSVOA_U
 ClientSampled : MDL05

Tgt Ion	Resp	Lower	Upper
73	4918		
43	16.5	19.1	28.7#
57	23.1	18.3	27.5

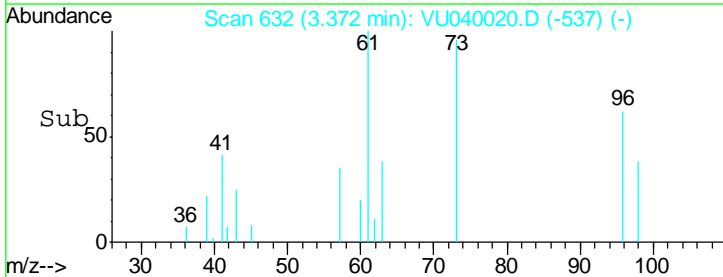
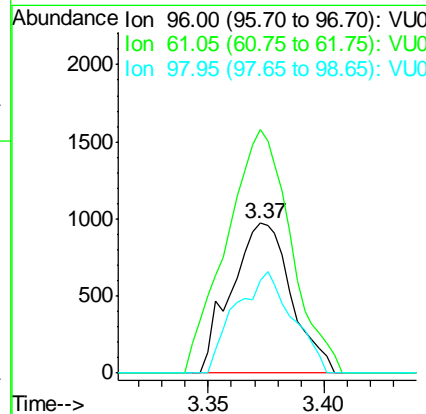
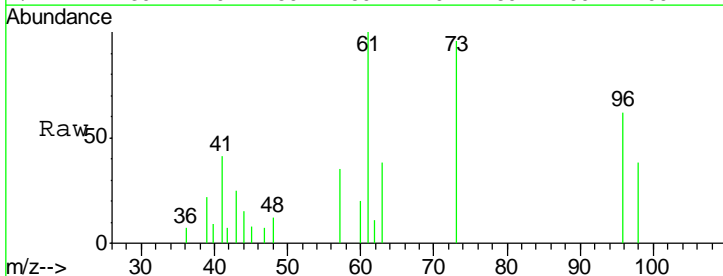
Manual Integrations
 APPROVED

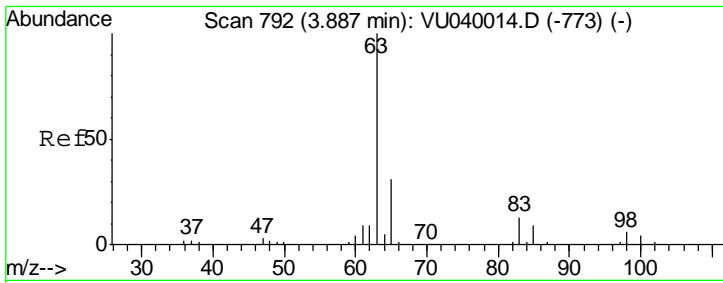
MMDadoda
 9/4/2020 2:20:40 PM



#18
 trans-1,2-Dichloroethene
 Concen: 0.177 ug/L
 RT: 3.37 min Scan# 632
 Delta R.T. 0.01 min
 Lab File: VU040020.D
 Acq: 02 Sep 2020 12:35

Tgt Ion	Resp	Lower	Upper
96	1746		
61	162.4	110.5	205.3
98	61.6	43.2	80.2





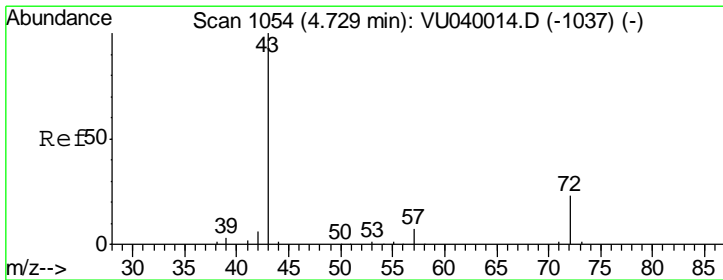
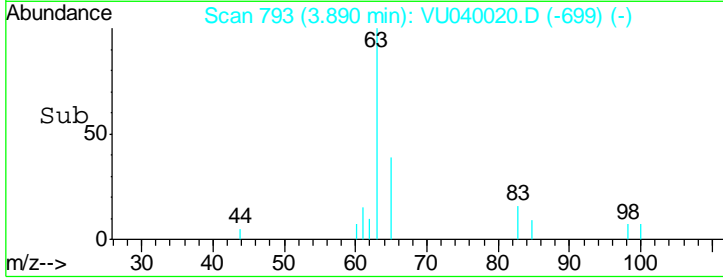
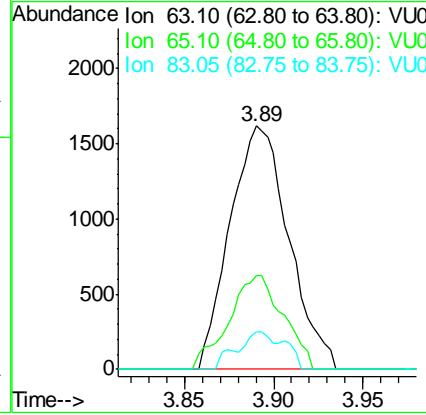
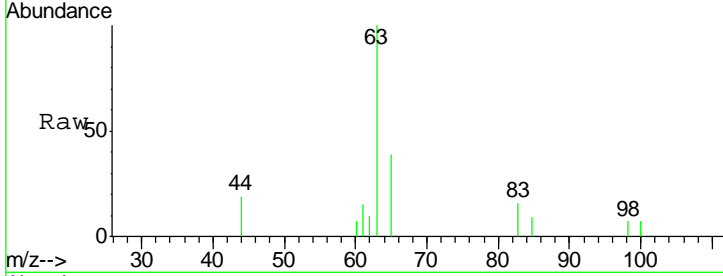
#19
 1,1-Dichloroethane
 Concen: 0.183 ug/L
 RT: 3.89 min Scan# 793
 Delta R.T. 0.00 min
 Lab File: VU040020.D
 Acq: 02 Sep 2020 12:35

Instrument : MSVOA_U
 ClientSampled : MDL05

Tgt Ion	Resp	Lower	Upper
63	3712		
65	38.6	22.2	41.2
83	15.6	9.4	17.6

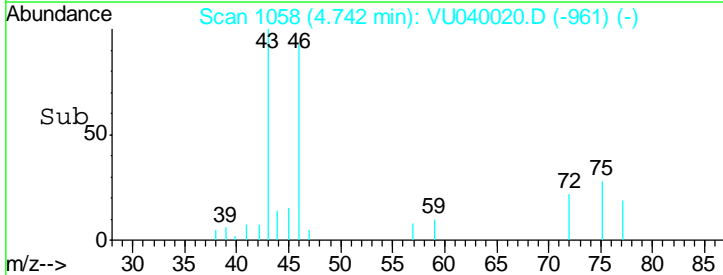
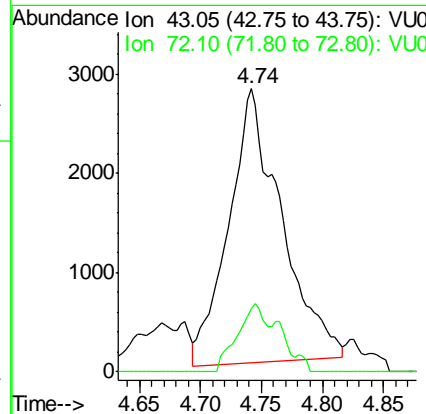
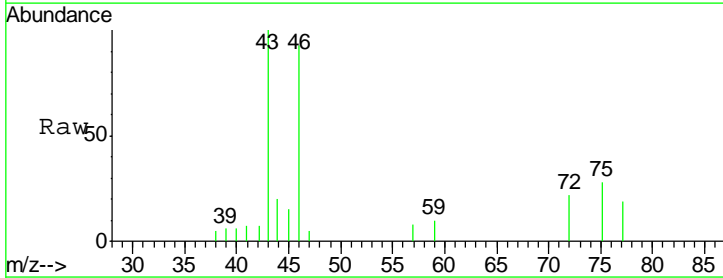
Manual Integrations
 APPROVED

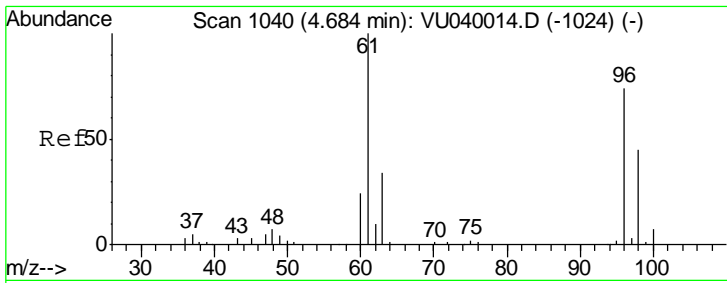
MMDadoda
 9/4/2020 2:20:40 PM



#21
 2-Butanone
 Concen: 2.114 ug/L
 RT: 4.74 min Scan# 1058
 Delta R.T. 0.01 min
 Lab File: VU040020.D
 Acq: 02 Sep 2020 12:35

Tgt Ion	Resp	Lower	Upper
43	8274		
43	100		
72	13.1	11.7	35.0





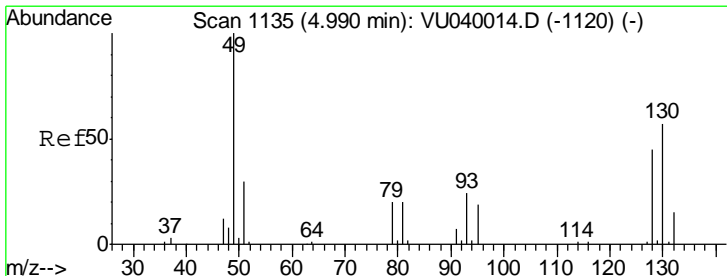
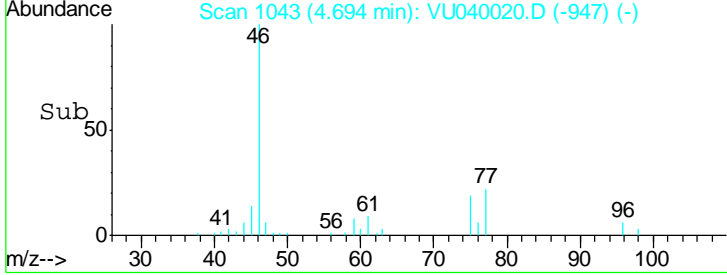
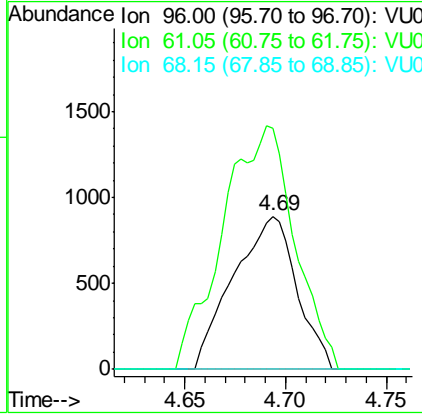
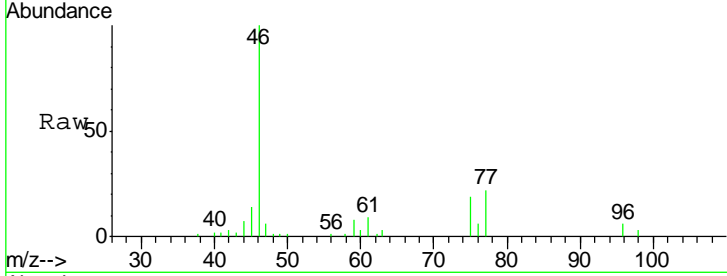
#22
 cis-1,2-Dichloroethene
 Concen: 0.184 ug/L
 RT: 4.69 min Scan# 1043
 Delta R.T. 0.01 min
 Lab File: VU040020.D
 Acq: 02 Sep 2020 12:35

Instrument :
 MSVOA_U
ClientSampled :
 MDL05

Tgt Ion	Resp	Lower	Upper
96	1949		
61	157.8	98.8	183.4
68	0.0	0.0	0.0

Manual Integrations
APPROVED

MMDadoda
 9/4/2020 2:20:40 PM



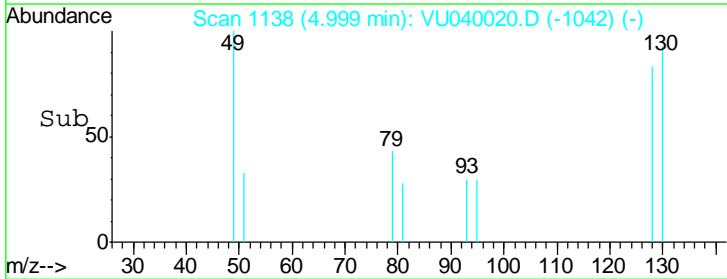
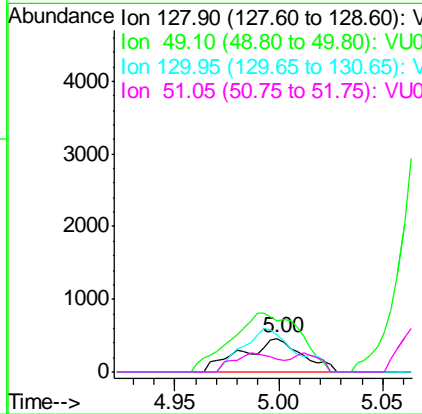
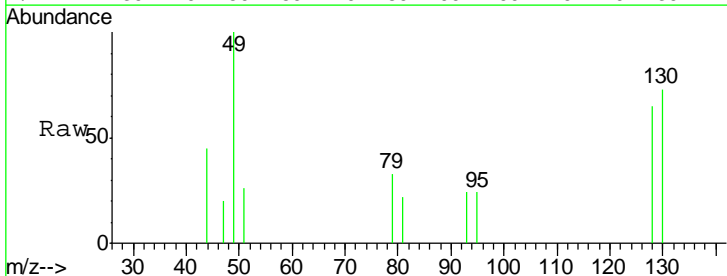
#23
 Bromochloromethane
 Concen: 0.197 ug/L m
 RT: 5.00 min Scan# 1138
 Delta R.T. 0.01 min
 Lab File: VU040020.D
 Acq: 02 Sep 2020 12:35

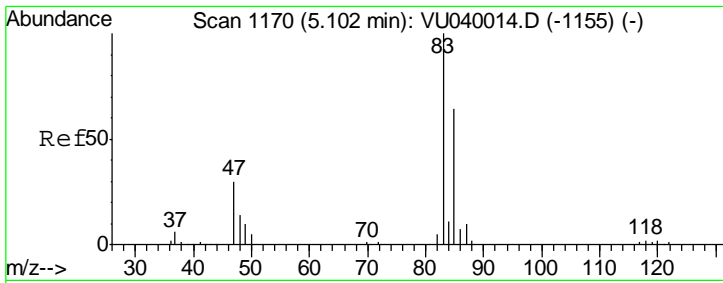
Instrument :
 MSVOA_U
ClientSampled :
 MDL05

Tgt Ion	Resp	Lower	Upper
128	917		
49	154.0	143.4	266.4
130	112.1	89.5	166.3
51	39.9	51.0	76.4#

Manual Integrations
APPROVED

MMDadoda
 9/4/2020 2:20:40 PM





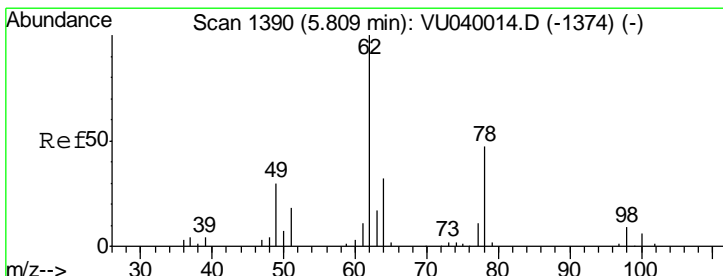
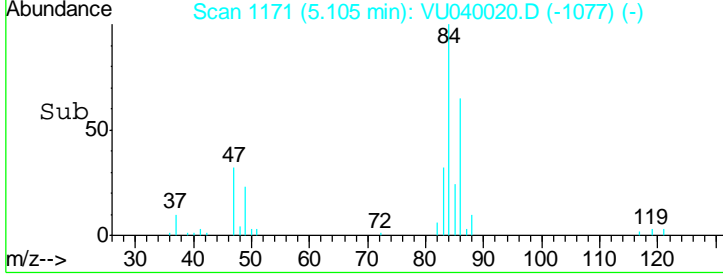
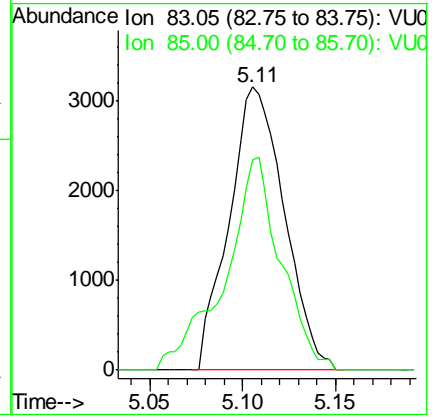
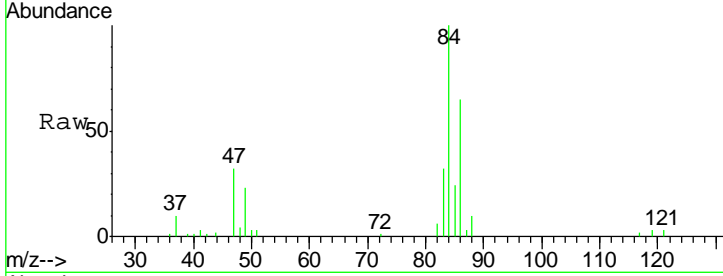
#25
 Chloroform
 Concen: 0.314 ug/L
 RT: 5.11 min Scan# 1171
 Delta R.T. 0.00 min
 Lab File: VU040020.D
 Acq: 02 Sep 2020 12:35

Instrument : MSVOA_U
 ClientSampled : MDL05

Tgt Ion	Resp	Lower	Upper
83	100		
85	74.2	45.3	84.1

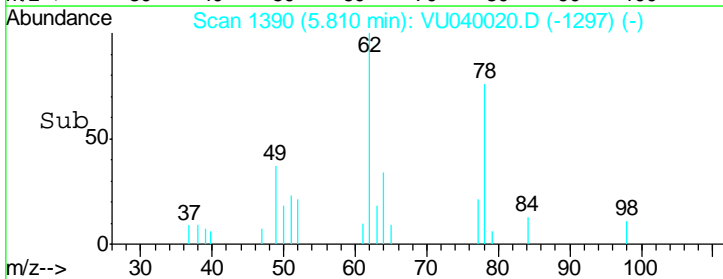
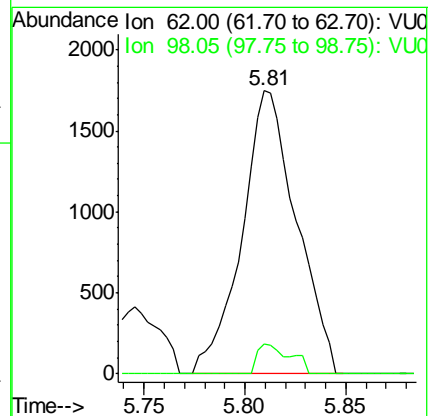
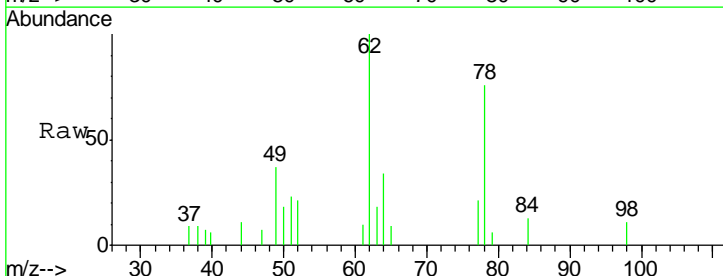
Manual Integrations
 APPROVED

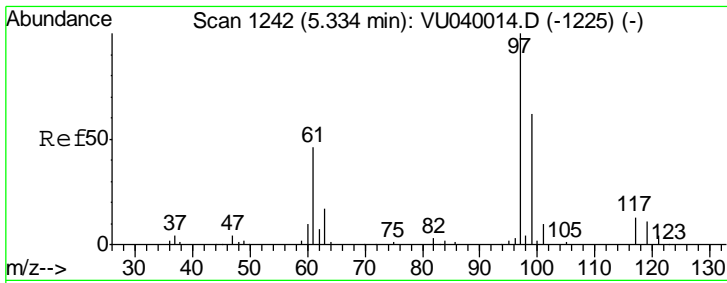
MMDadoda
 9/4/2020 2:20:40 PM



#27
 1,2-Dichloroethane
 Concen: 0.216 ug/L
 RT: 5.81 min Scan# 1390
 Delta R.T. 0.00 min
 Lab File: VU040020.D
 Acq: 02 Sep 2020 12:35

Tgt Ion	Resp	Lower	Upper
62	100		
98	10.6	6.1	9.1#





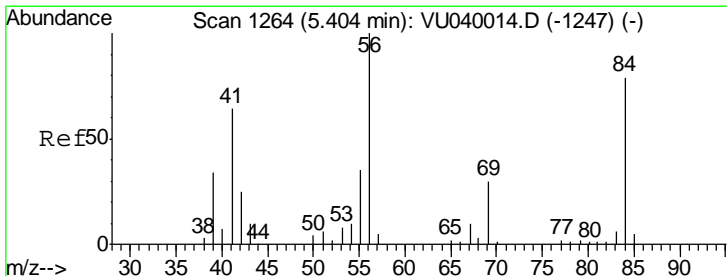
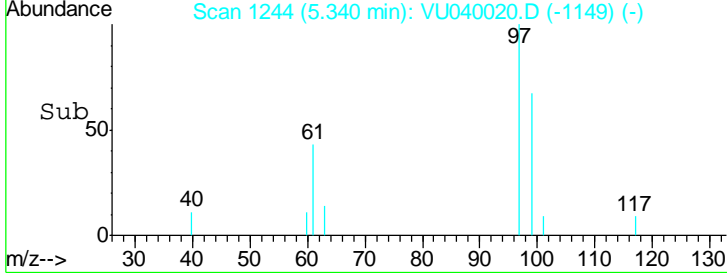
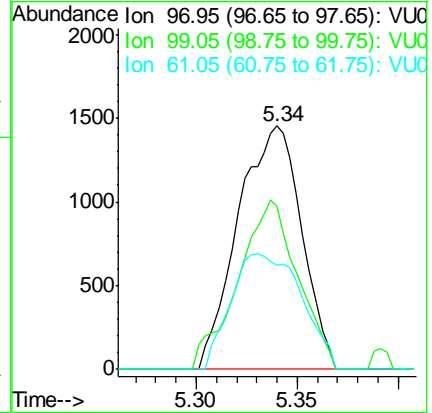
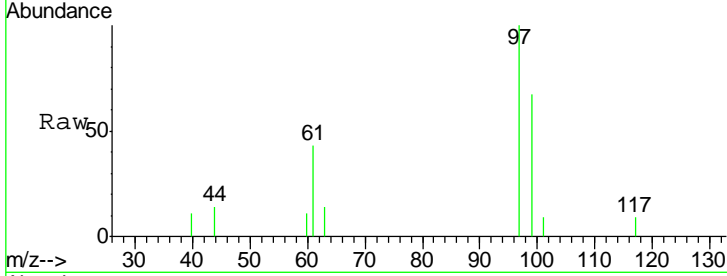
#29
 1,1,1-Trichloroethane
 Concen: 0.174 ug/L
 RT: 5.34 min Scan# 1244
 Delta R.T. 0.01 min
 Lab File: VU040020.D
 Acq: 02 Sep 2020 12:35

Instrument : MSVOA_U
 ClientSampled : MDL05

Tgt Ion	Resp	Lower	Upper
97	100		
99	65.5	50.9	76.3
61	52.9	39.5	59.3

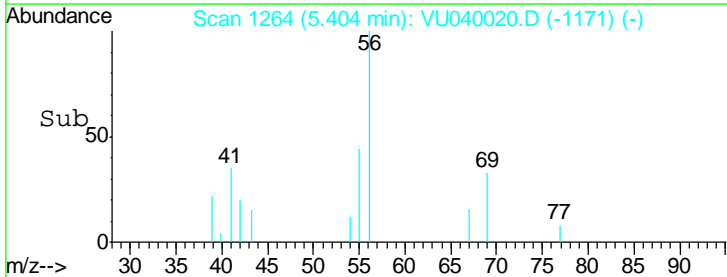
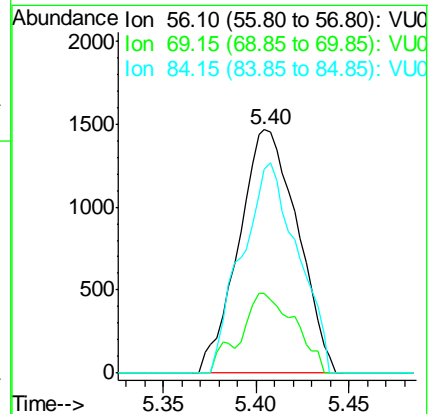
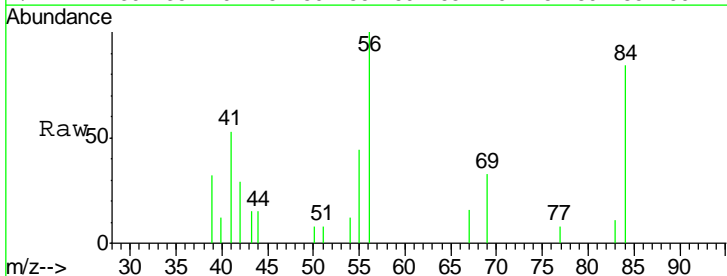
Manual Integrations
 APPROVED

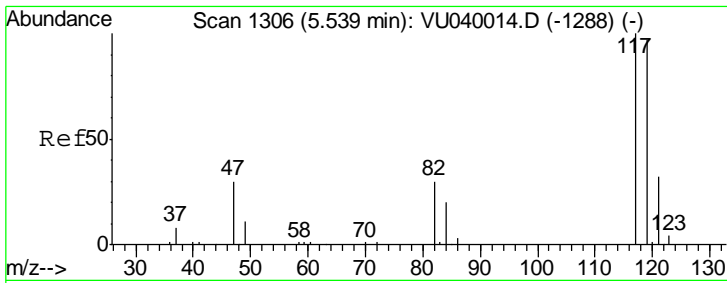
MMDadoda
 9/4/2020 2:20:40 PM



#30
 Cyclohexane
 Concen: 0.181 ug/L
 RT: 5.40 min Scan# 1264
 Delta R.T. 0.00 min
 Lab File: VU040020.D
 Acq: 02 Sep 2020 12:35

Tgt Ion	Resp	Lower	Upper
56	100		
69	30.3	24.1	36.1
84	82.3	65.0	97.4



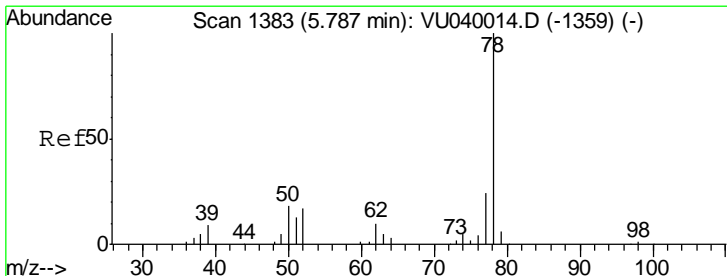
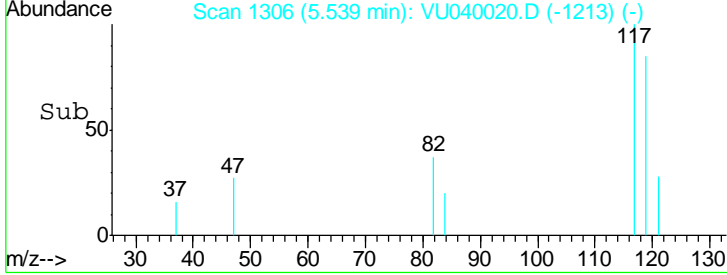
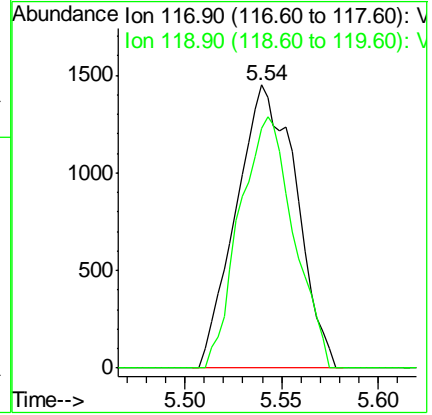
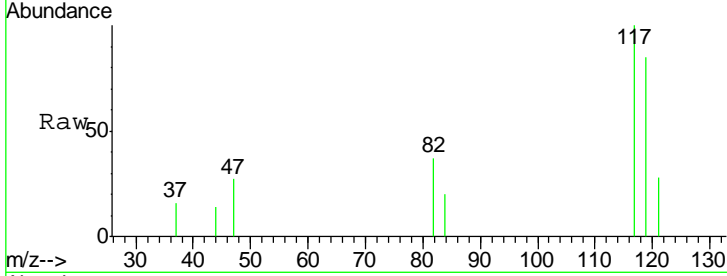


#31
 Carbon tetrachloride
 Concen: 0.199 ug/L
 RT: 5.54 min Scan# 1306
 Delta R.T. 0.00 min
 Lab File: VU040020.D
 Acq: 02 Sep 2020 12:35

Instrument : MSVOA_U
 ClientSampled : MDL05

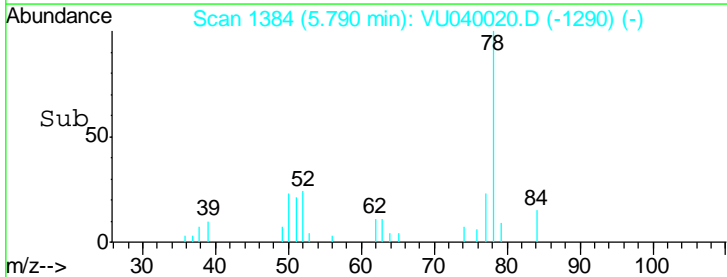
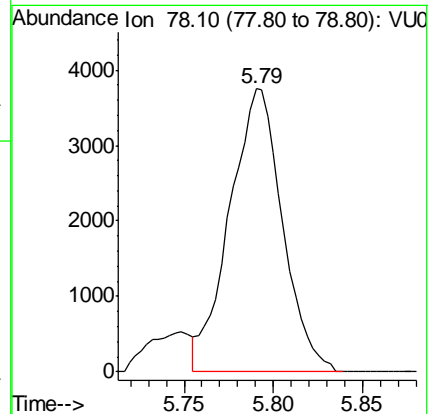
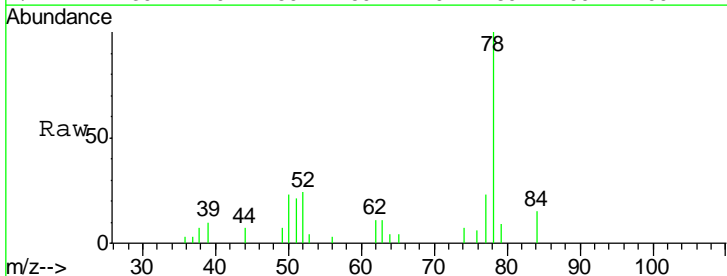
Tgt Ion: 117 Resp: 3122
 Ion Ratio Lower Upper
 117 100
 119 80.3 77.7 116.5

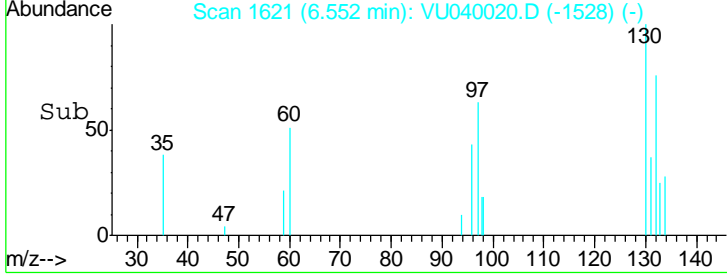
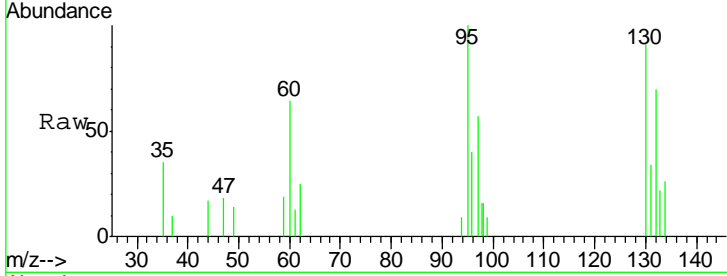
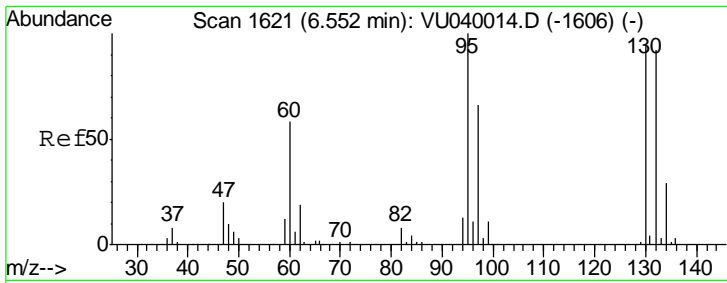
Manual Integrations
APPROVED
 MMDadoda
 9/4/2020 2:20:40 PM



#33
 Benzene
 Concen: 0.185 ug/L
 RT: 5.79 min Scan# 1384
 Delta R.T. 0.00 min
 Lab File: VU040020.D
 Acq: 02 Sep 2020 12:35

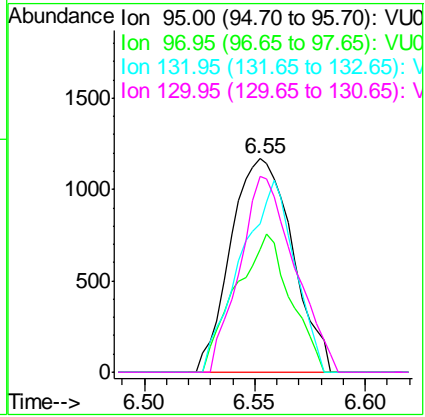
Tgt Ion: 78 Resp: 7744





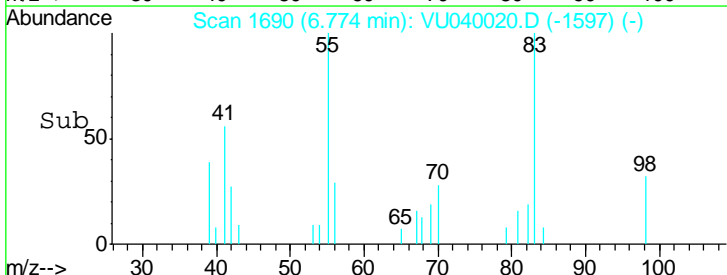
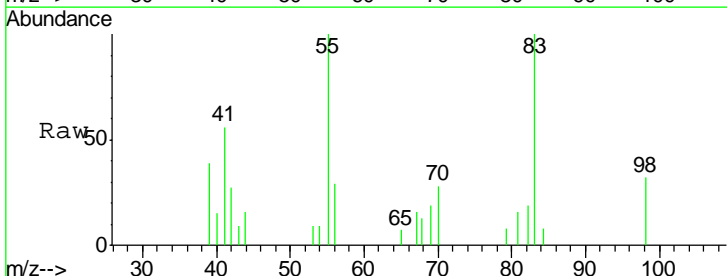
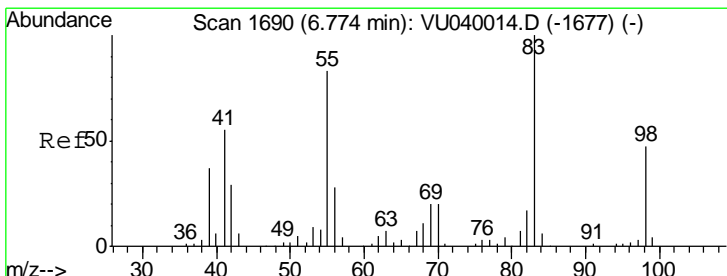
#34
 Trichloroethene
 Concen: 0.203 ug/L
 RT: 6.55 min Scan# 1621
 Delta R.T. 0.00 min
 Lab File: VU040020.D
 Acq: 02 Sep 2020 12:35

Tgt Ion	Resp	Lower	Upper
95	100		
97	57.5	43.3	80.5
132	69.7	59.4	110.4
130	91.4	64.8	120.4



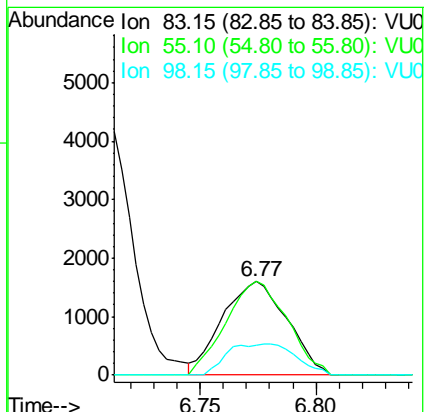
Instrument : MSVOA_U
 ClientSampled : MDL05

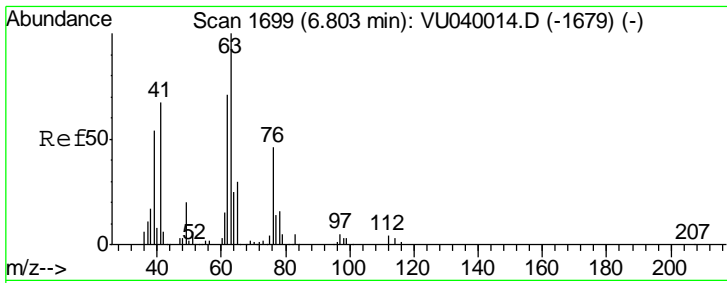
Manual Integrations
APPROVED
 MMDadoda
 9/4/2020 2:20:40 PM



#35
 Methylcyclohexane
 Concen: 0.181 ug/L
 RT: 6.77 min Scan# 1690
 Delta R.T. 0.00 min
 Lab File: VU040020.D
 Acq: 02 Sep 2020 12:35

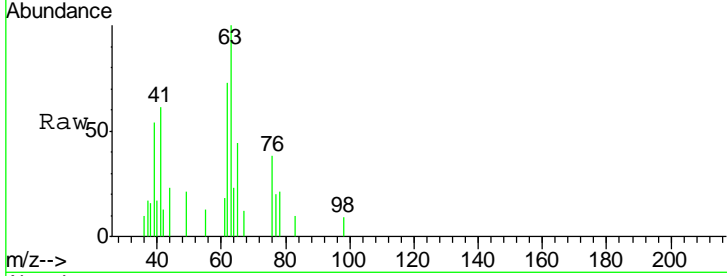
Tgt Ion	Resp	Lower	Upper
83	100		
55	94.8	70.5	105.7
98	35.3	37.8	56.6#





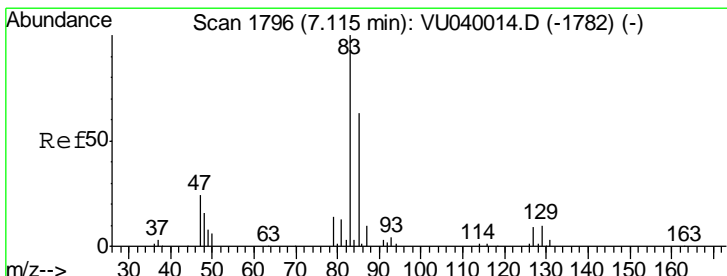
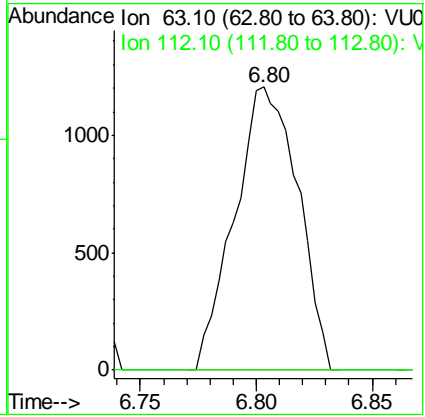
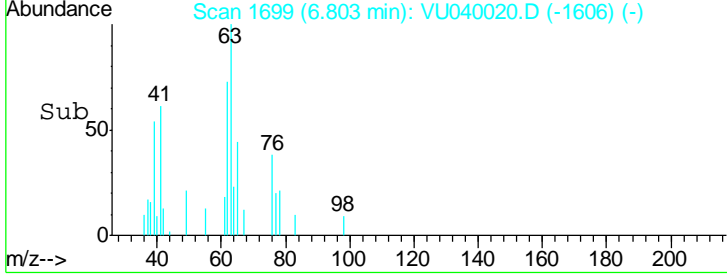
#37
 1,2-Dichloropropane
 Concen: 0.203 ug/L
 RT: 6.80 min Scan# 1699
 Delta R.T. 0.00 min
 Lab File: VU040020.D
 Acq: 02 Sep 2020 12:35

Instrument : MSVOA_U
 ClientSampled : MDL05

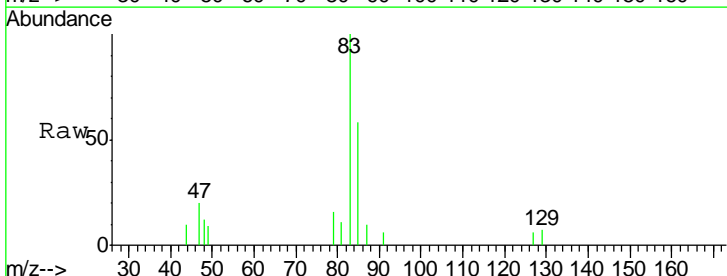


Tgt Ion: 63 Resp: 2292
 Ion Ratio Lower Upper
 63 100
 112 0.0 3.2 4.8#

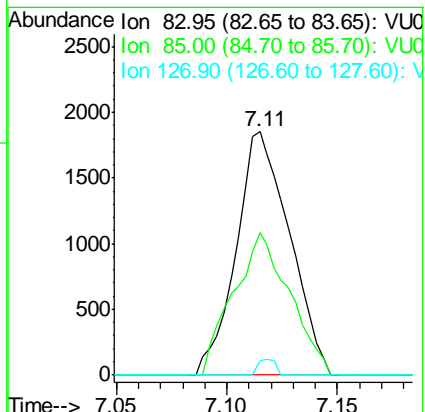
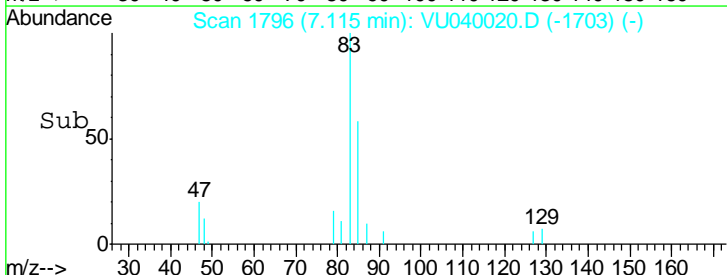
Manual Integrations
APPROVED
 MMDadoda
 9/4/2020 2:20:40 PM

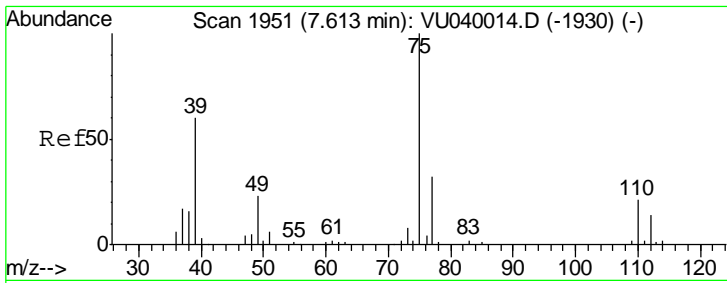


#38
 Bromodichloromethane
 Concen: 0.201 ug/L
 RT: 7.11 min Scan# 1796
 Delta R.T. 0.00 min
 Lab File: VU040020.D
 Acq: 02 Sep 2020 12:35



Tgt Ion: 83 Resp: 3106
 Ion Ratio Lower Upper
 83 100
 85 58.5 45.1 83.9
 127 5.7 6.7 10.1#



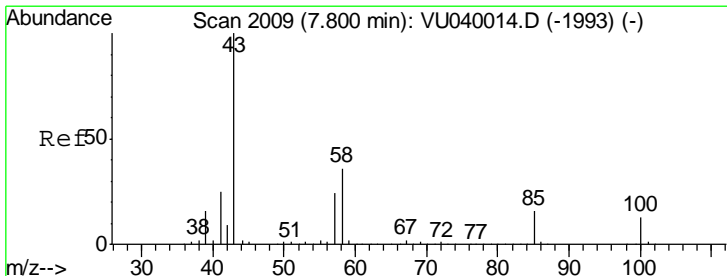
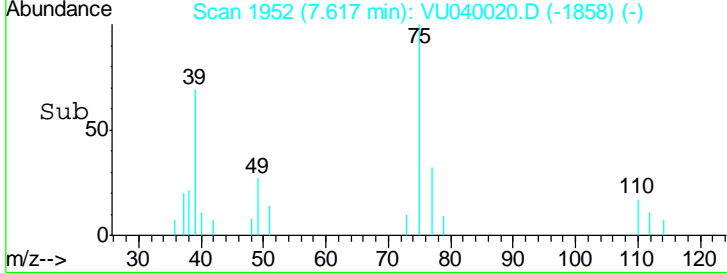
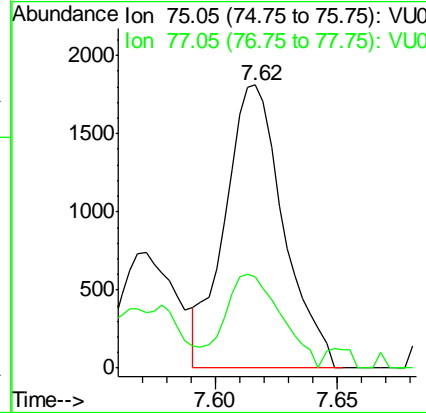
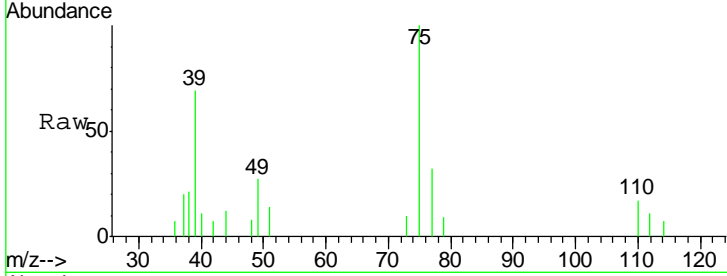


#39
 cis-1,3-Dichloropropene
 Concen: 0.181 ug/L
 RT: 7.62 min Scan# 1952
 Delta R.T. 0.00 min
 Lab File: VU040020.D
 Acq: 02 Sep 2020 12:35

Instrument :
 MSVOA_U
ClientSampled :
 MDL05

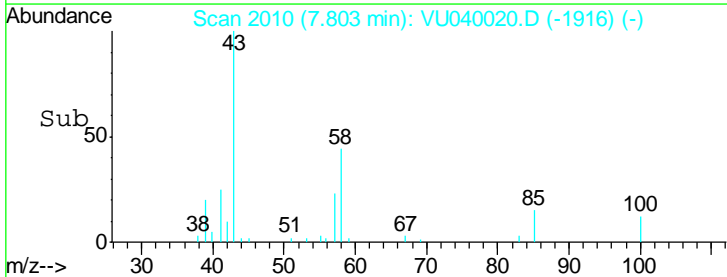
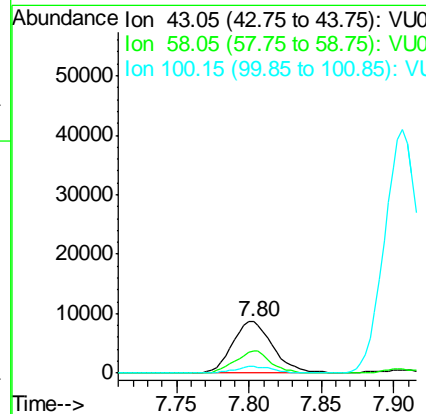
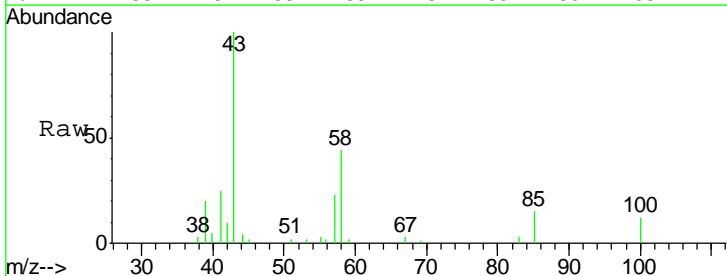
Tgt Ion: 75 Resp: 3024
 Ion Ratio Lower Upper
 75 100
 77 32.1 21.1 39.3

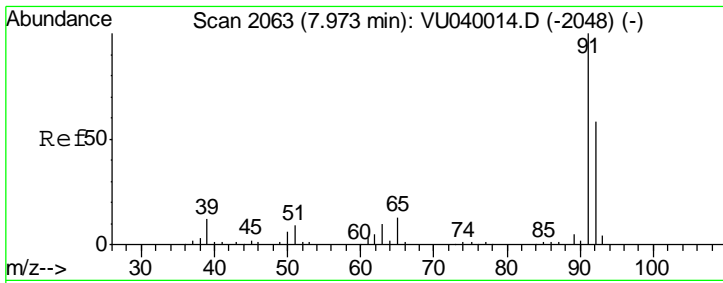
Manual Integrations
APPROVED
 MMDadoda
 9/4/2020 2:20:40 PM



#40
 4-Methyl-2-pentanone
 Concen: 1.798 ug/L
 RT: 7.80 min Scan# 2010
 Delta R.T. 0.00 min
 Lab File: VU040020.D
 Acq: 02 Sep 2020 12:35

Tgt Ion: 43 Resp: 16686
 Ion Ratio Lower Upper
 43 100
 58 38.3 28.7 43.1
 100 0.0 10.2 15.2#





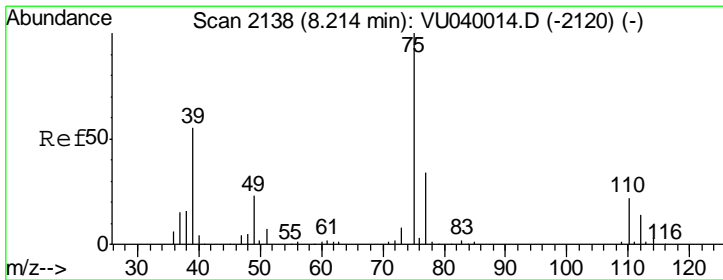
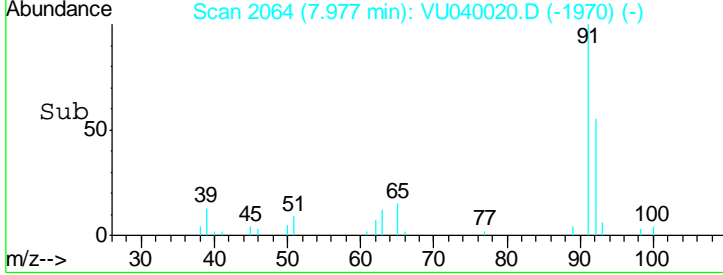
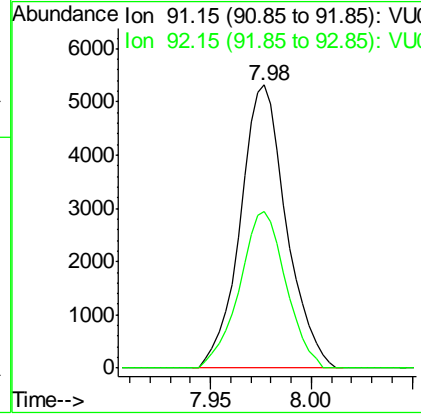
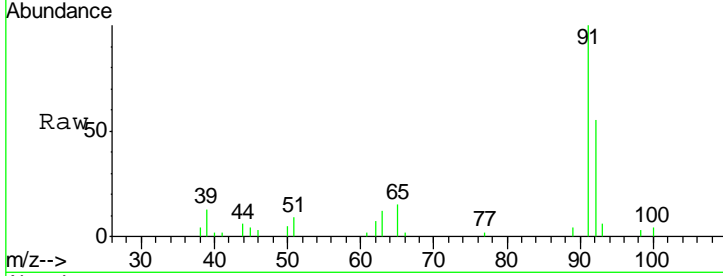
#42
 Toluene
 Concen: 0.197 ug/L
 RT: 7.98 min Scan# 2064
 Delta R.T. 0.00 min
 Lab File: VU040020.D
 Acq: 02 Sep 2020 12:35

Instrument : MSVOA_U
 ClientSampled : MDL05

Tgt Ion	Resp	Lower	Upper
91	100		
92	55.1	40.7	75.5

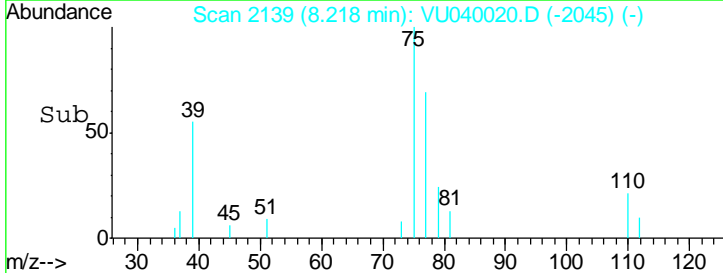
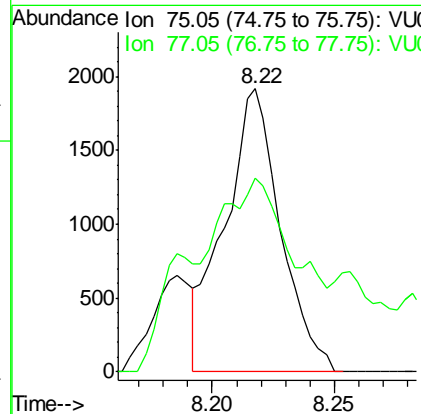
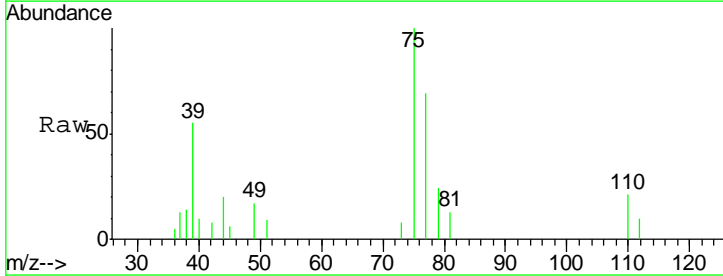
Manual Integrations
 APPROVED

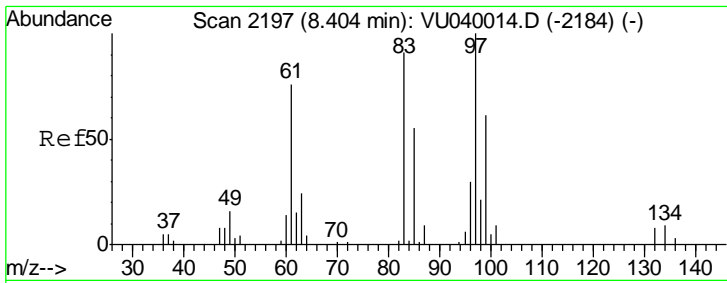
MMDadoda
 9/4/2020 2:20:40 PM



#44
 trans-1,3-Dichloropropene
 Concen: 0.197 ug/L
 RT: 8.22 min Scan# 2139
 Delta R.T. 0.00 min
 Lab File: VU040020.D
 Acq: 02 Sep 2020 12:35

Tgt Ion	Resp	Lower	Upper
75	100		
77	68.5	23.9	44.3#





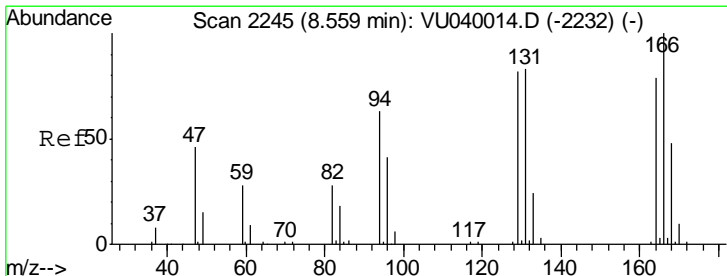
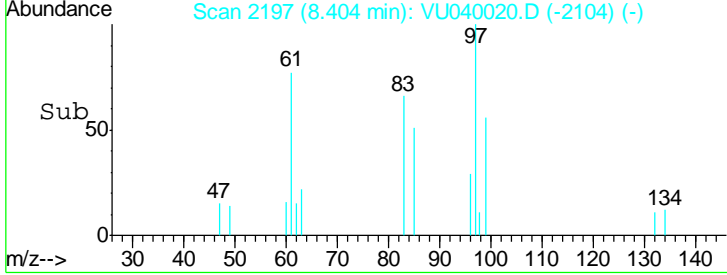
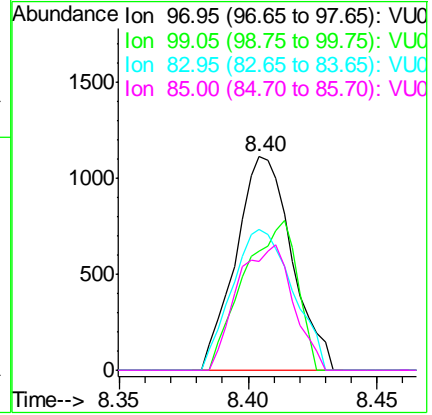
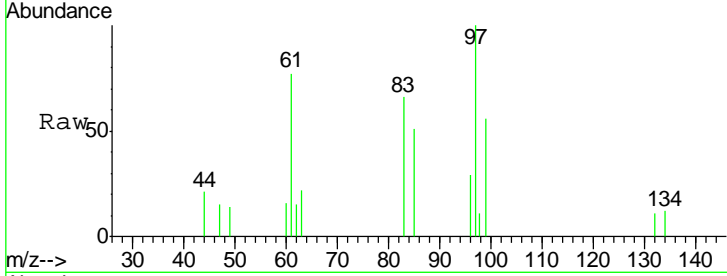
#45
 1,1,2-Trichloroethane
 Concen: 0.204 ug/L
 RT: 8.40 min Scan# 2197
 Delta R.T. 0.00 min
 Lab File: VU040020.D
 Acq: 02 Sep 2020 12:35

Instrument : MSVOA_U
 ClientSampled : VU040020.D
 MDL05

Tgt Ion	Resp	Lower	Upper
97	1681		
97	100		
99	55.8	43.0	79.8
83	66.2	61.7	114.7
85	51.2	39.3	73.1

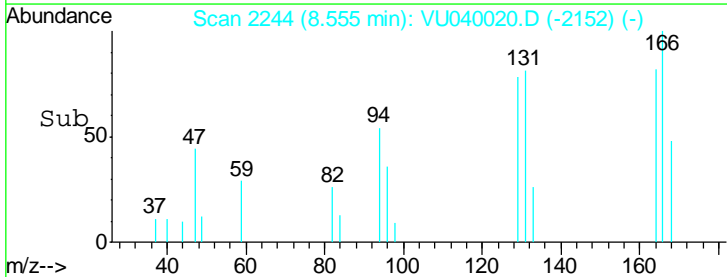
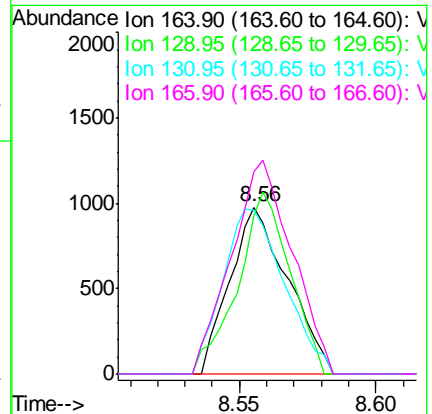
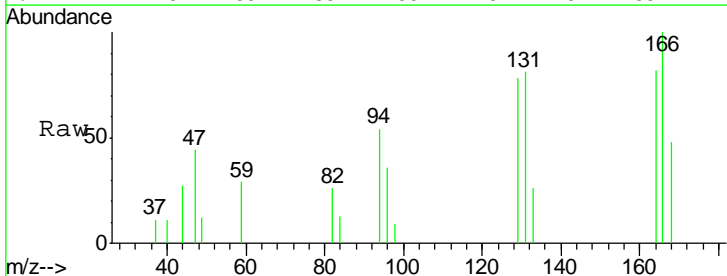
Manual Integrations
 APPROVED

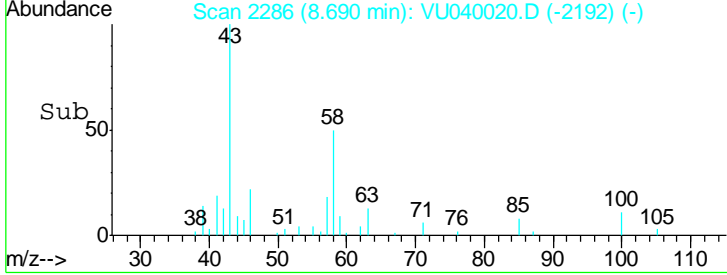
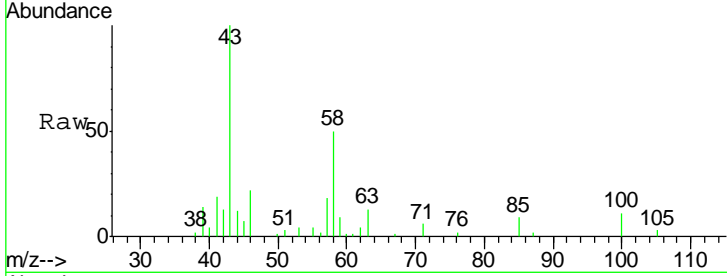
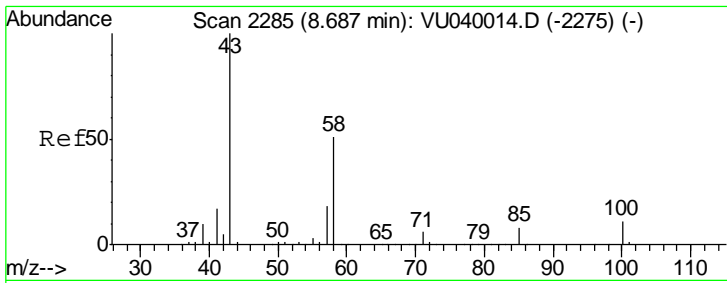
MMDadoda
 9/4/2020 2:20:40 PM



#47
 Tetrachloroethene
 Concen: 0.196 ug/L
 RT: 8.56 min Scan# 2244
 Delta R.T. -0.00 min
 Lab File: VU040020.D
 Acq: 02 Sep 2020 12:35

Tgt Ion	Resp	Lower	Upper
164	1444		
164	100		
129	95.1	71.5	132.7
131	98.5	65.9	122.5
166	121.5	87.3	162.1



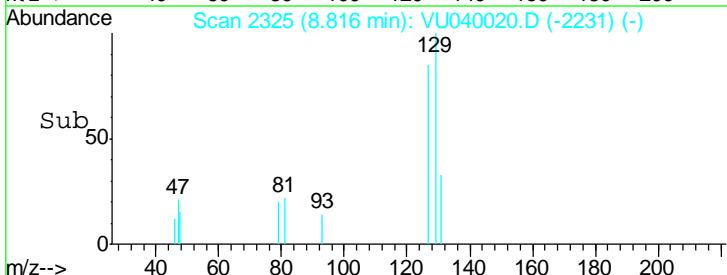
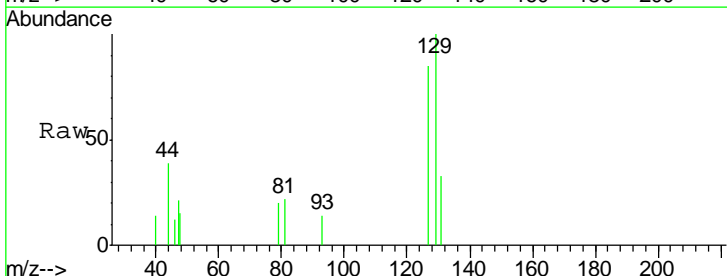
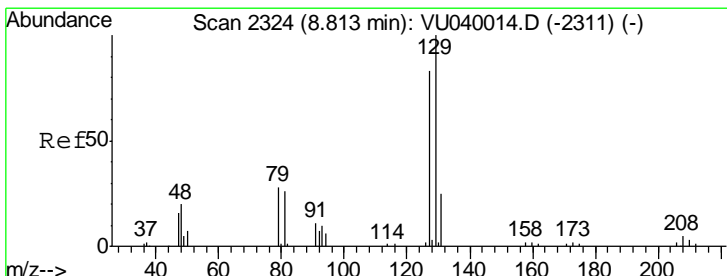
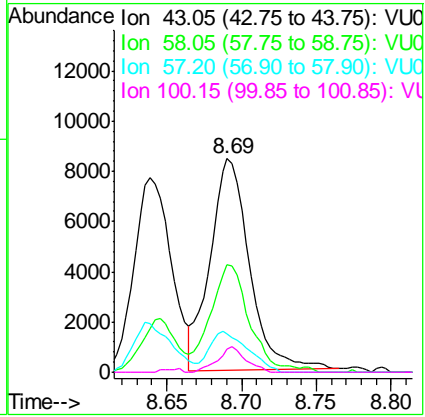


#48
 2-Hexanone
 Concen: 2.277 ug/L
 RT: 8.69 min Scan# 2286
 Delta R.T. 0.00 min
 Lab File: VU040020.D
 Acq: 02 Sep 2020 12:35

Tgt Ion	Resp	Lower	Upper
43	15412		
58	51.1	39.6	59.4
57	19.1	14.3	21.5
100	8.5	8.0	12.0

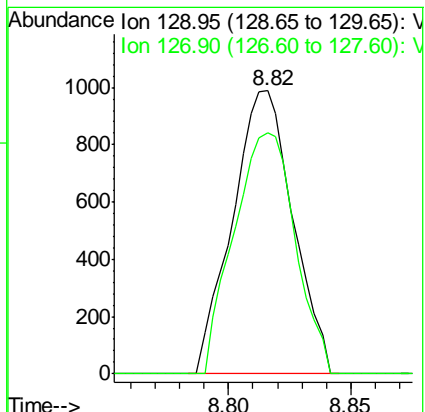
Instrument : MSVOA_U
 ClientSampled : MDL05

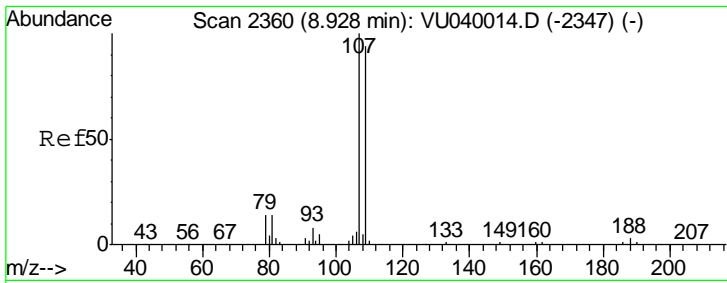
Manual Integrations
APPROVED
 MMDadoda
 9/4/2020 2:20:40 PM



#49
 Dibromochloromethane
 Concen: 0.172 ug/L
 RT: 8.82 min Scan# 2325
 Delta R.T. 0.00 min
 Lab File: VU040020.D
 Acq: 02 Sep 2020 12:35

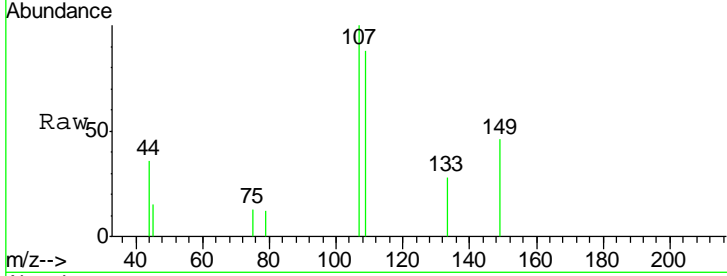
Tgt Ion	Resp	Lower	Upper
129	1699		
127	85.2	53.7	99.7





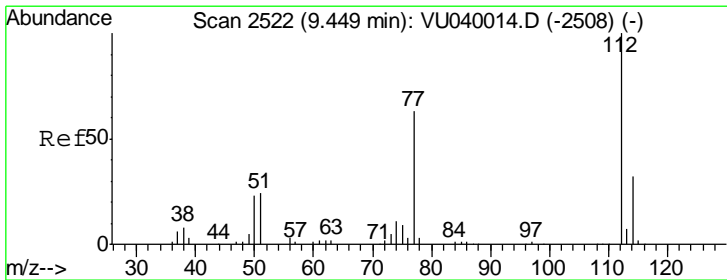
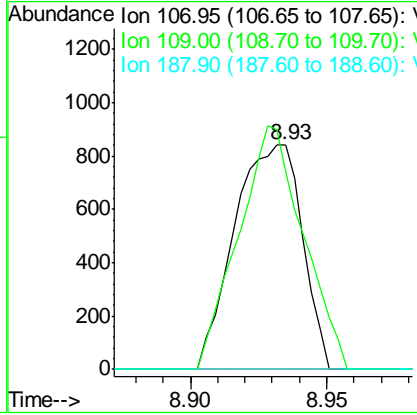
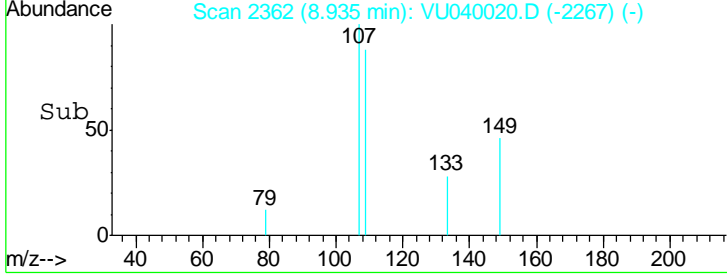
#50
 1,2-Dibromoethane
 Concen: 0.183 ug/L
 RT: 8.93 min Scan# 2362
 Delta R.T. 0.01 min
 Lab File: VU040020.D
 Acq: 02 Sep 2020 12:35

Instrument : MSVOA_U
 ClientSampled : MDL05

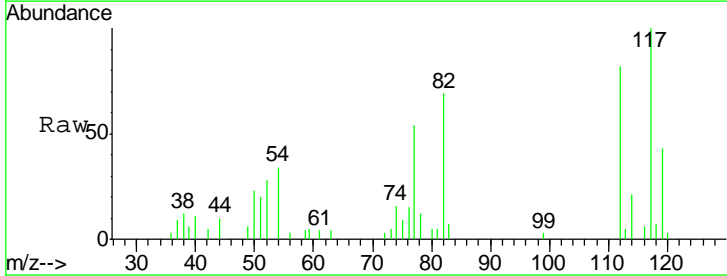


Tgt Ion	Resp	Lower	Upper
107	100		
109	87.9	62.4	115.8
188	0.0	2.3	3.5#

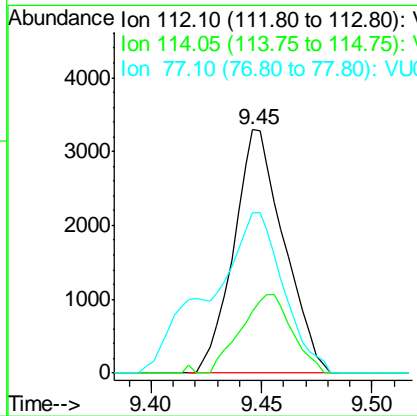
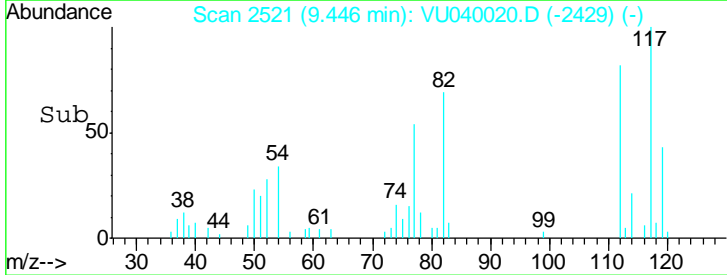
Manual Integrations
APPROVED
 MMDadoda
 9/4/2020 2:20:40 PM

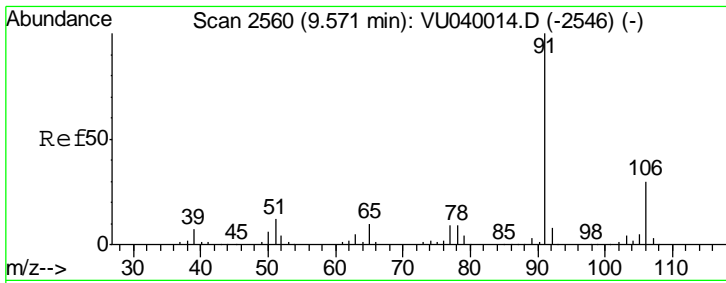


#51
 Chlorobenzene
 Concen: 0.194 ug/L
 RT: 9.45 min Scan# 2521
 Delta R.T. -0.00 min
 Lab File: VU040020.D
 Acq: 02 Sep 2020 12:35



Tgt Ion	Resp	Lower	Upper
112	100		
114	25.4	22.7	42.3
77	65.7	53.2	79.8





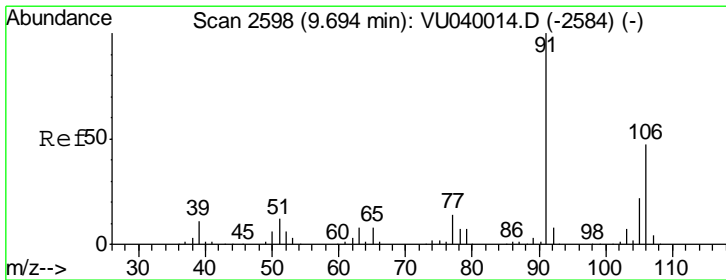
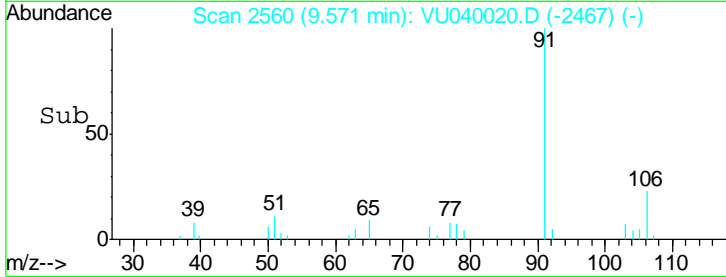
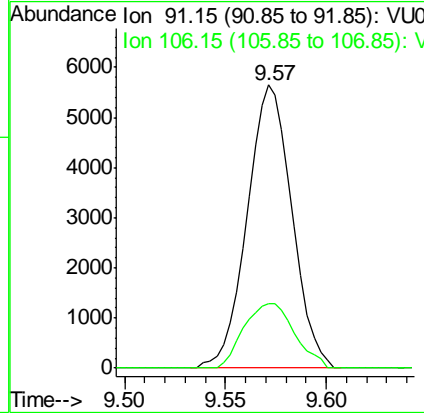
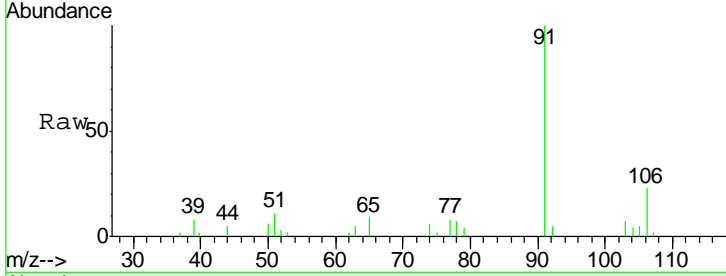
#52
 Ethylbenzene
 Concen: 0.179 ug/L
 RT: 9.57 min Scan# 2560
 Delta R.T. 0.00 min
 Lab File: VU040020.D
 Acq: 02 Sep 2020 12:35

Instrument : MSVOA_U
 ClientSampled : MDL05

Tgt Ion	Resp	Lower	Upper
91	100		
106	22.7	21.0	39.0

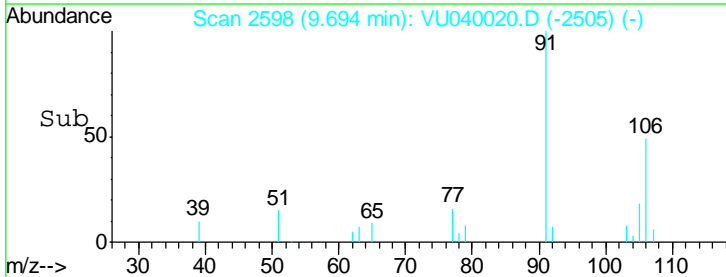
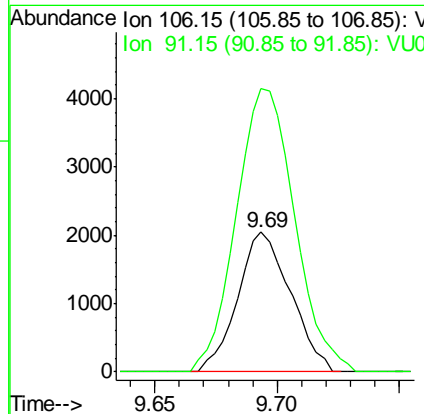
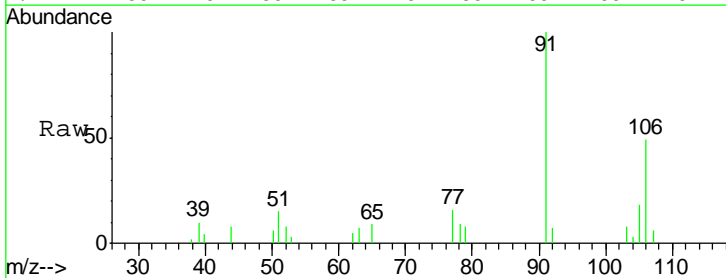
Manual Integrations
 APPROVED

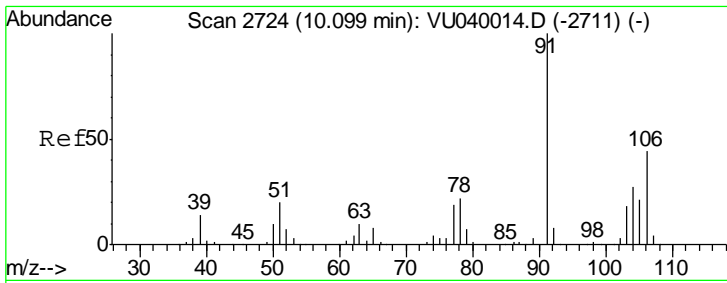
MMDadoda
 9/4/2020 2:20:40 PM



#53
 m,p-Xylene
 Concen: 0.177 ug/L
 RT: 9.69 min Scan# 2598
 Delta R.T. 0.00 min
 Lab File: VU040020.D
 Acq: 02 Sep 2020 12:35

Tgt Ion	Resp	Lower	Upper
106	100		
91	202.3	151.7	281.7





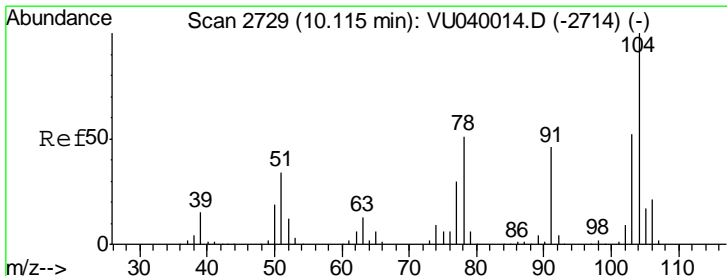
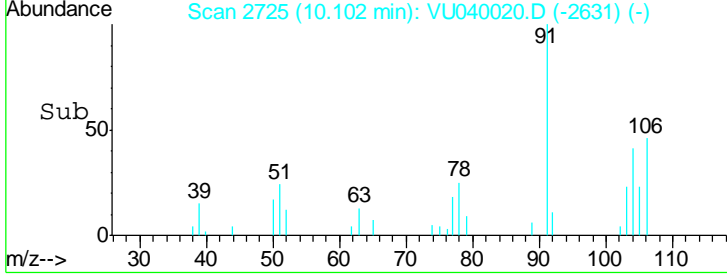
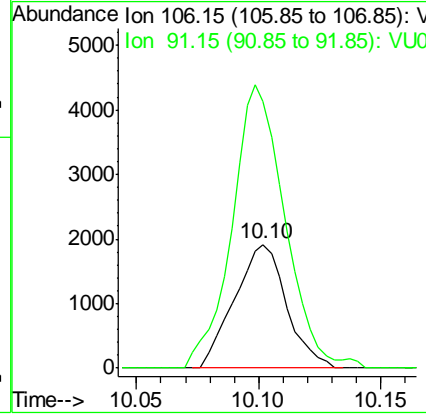
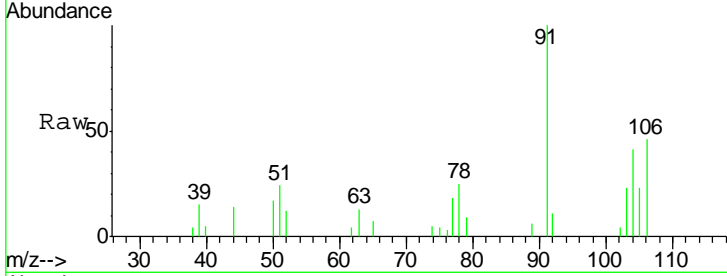
#54
 o-Xylene
 Concen: 0.171 ug/L
 RT: 10.10 min Scan# 2725
 Delta R.T. 0.00 min
 Lab File: VU040020.D
 Acq: 02 Sep 2020 12:35

Instrument : MSVOA_U
 Client Sampled : MDL05

Tgt Ion	Resp	Lower	Upper
106	2827		
106	100		
91	215.9	160.8	298.6

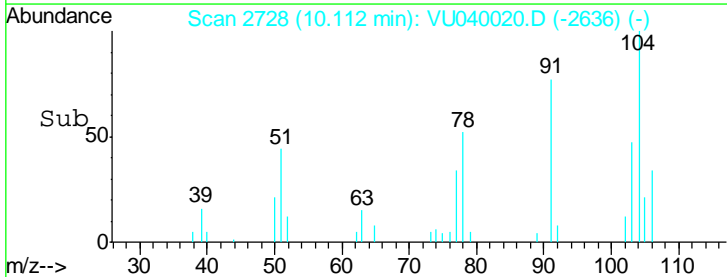
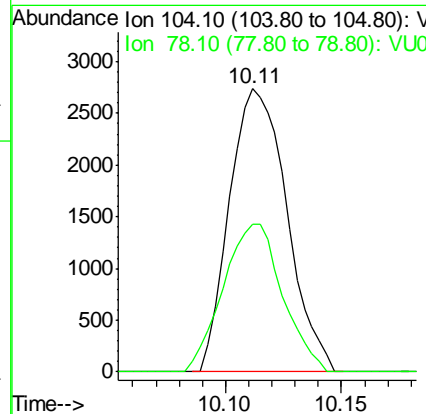
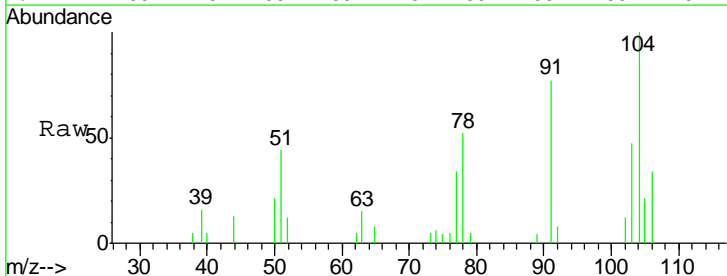
Manual Integrations
 APPROVED

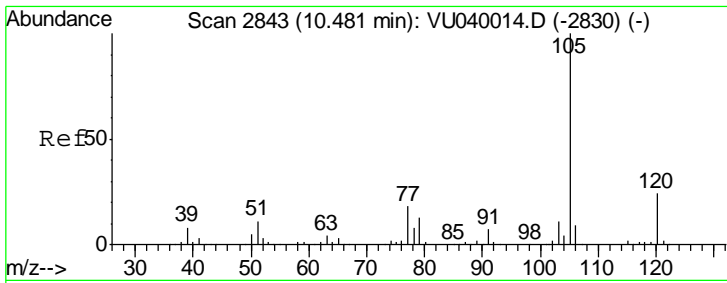
MMDadoda
 9/4/2020 2:20:40 PM



#55
 Styrene
 Concen: 0.163 ug/L
 RT: 10.11 min Scan# 2728
 Delta R.T. -0.00 min
 Lab File: VU040020.D
 Acq: 02 Sep 2020 12:35

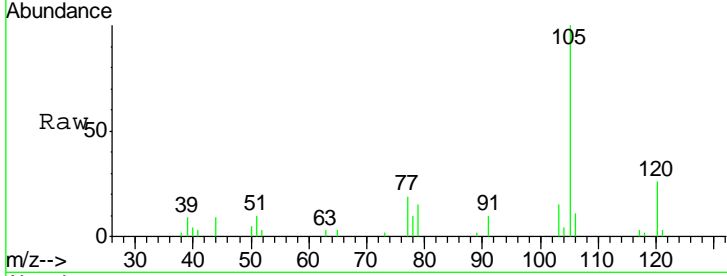
Tgt Ion	Resp	Lower	Upper
104	4708		
104	100		
78	52.1	36.8	68.3





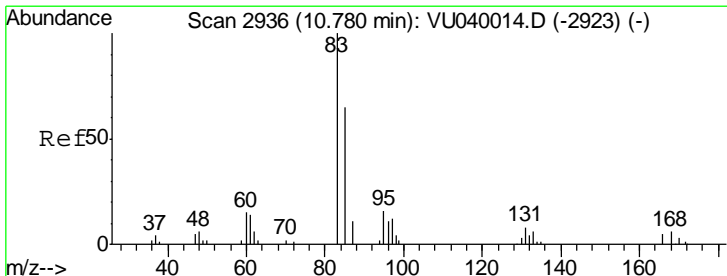
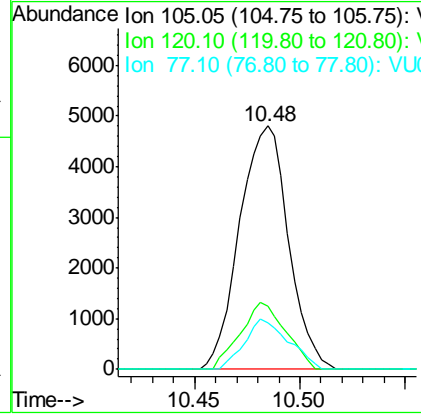
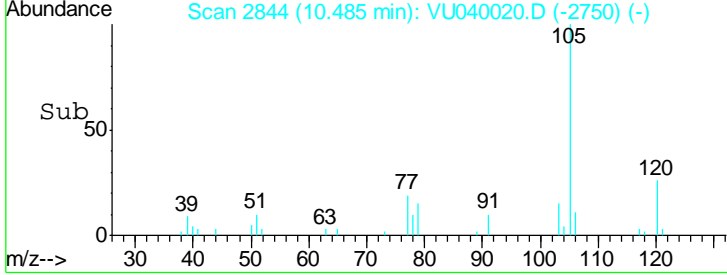
#56
 Isopropylbenzene
 Concen: 0.171 ug/L
 RT: 10.48 min Scan# 2844
 Delta R.T. 0.00 min
 Lab File: VU040020.D
 Acq: 02 Sep 2020 12:35

Instrument : MSVOA_U
 ClientSampled : MDL05

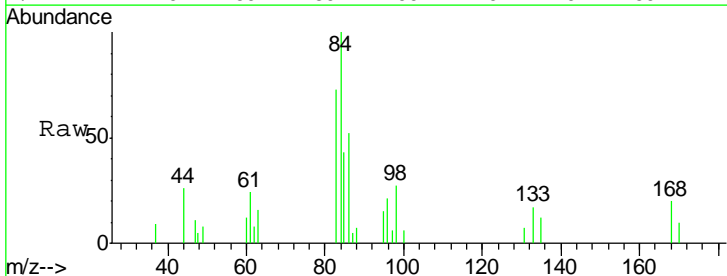


Tgt Ion	Resp	Lower	Upper
105	100		
120	25.4	20.1	30.1
77	18.6	14.4	21.6

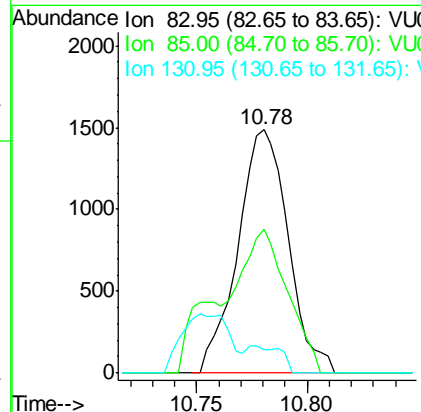
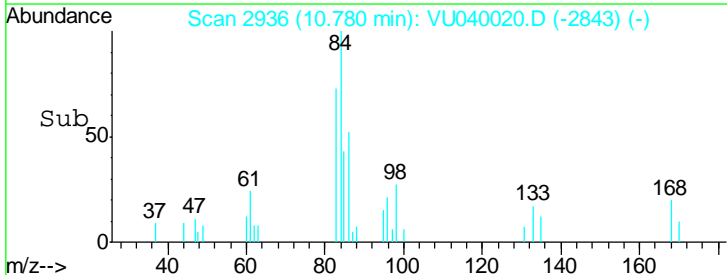
Manual Integrations APPROVED
 MMDadoda
 9/4/2020 2:20:40 PM

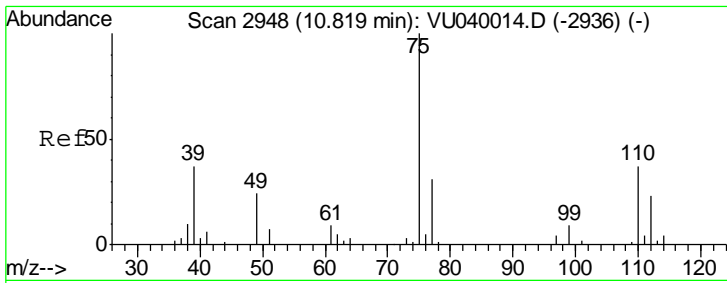


#58
 1,1,2,2-Tetrachloroethane
 Concen: 0.223 ug/L
 RT: 10.78 min Scan# 2936
 Delta R.T. 0.00 min
 Lab File: VU040020.D
 Acq: 02 Sep 2020 12:35



Tgt Ion	Resp	Lower	Upper
83	100		
85	58.8	44.9	83.3
131	9.7	7.4	11.0



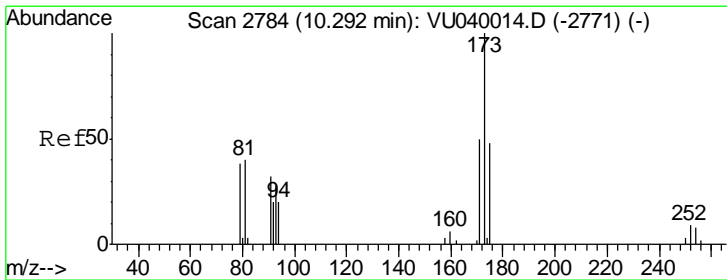
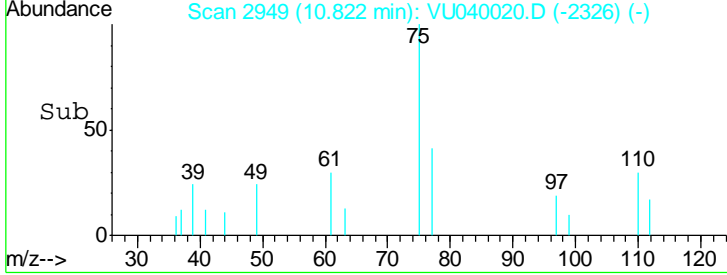
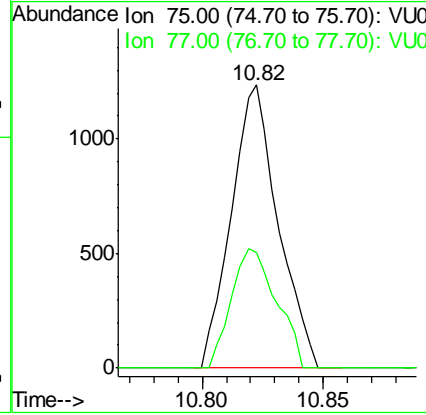
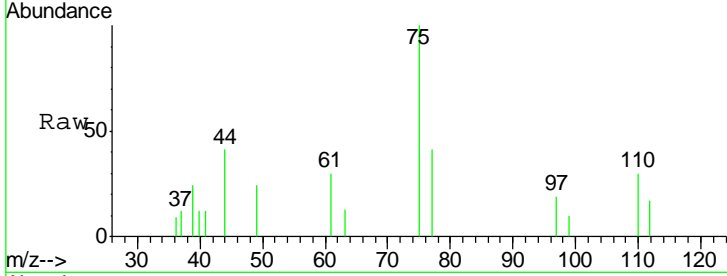


#59
 1,2,3-Trichloropropane
 Concen: 0.196 ug/L m
 RT: 10.82 min Scan# 2949
 Delta R.T. 0.00 min
 Lab File: VU040020.D
 Acq: 02 Sep 2020 12:35

Instrument : MSVOA_U
 ClientSampled : MDL05

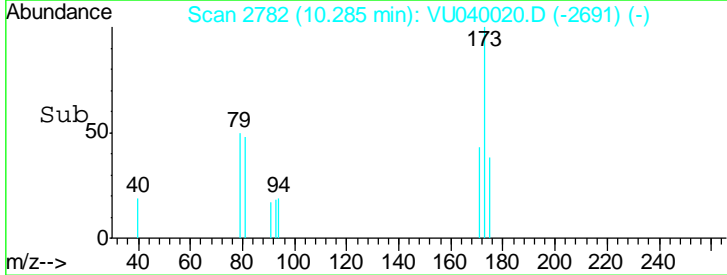
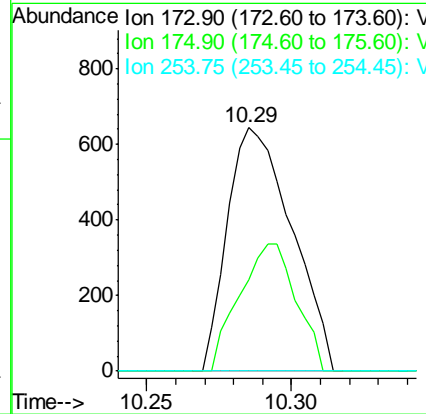
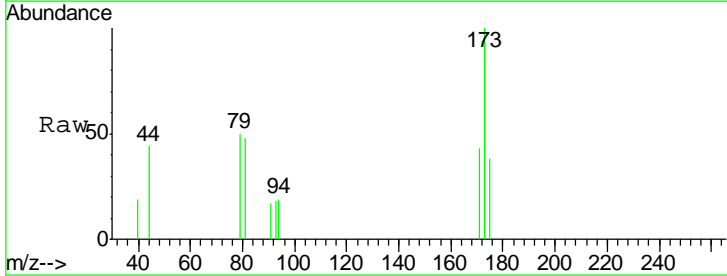
Tgt Ion: 75 Resp: 1644
 Ion Ratio Lower Upper
 75 100
 77 199.5 24.9 37.3#

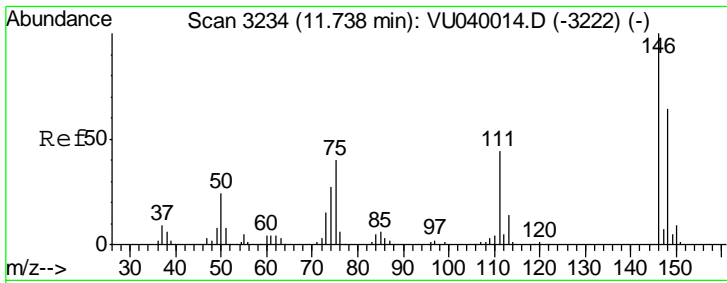
Manual Integrations
APPROVED
 MMDadoda
 9/4/2020 2:20:40 PM



#61
 Bromoform
 Concen: 0.199 ug/L
 RT: 10.29 min Scan# 2782
 Delta R.T. -0.01 min
 Lab File: VU040020.D
 Acq: 02 Sep 2020 12:35

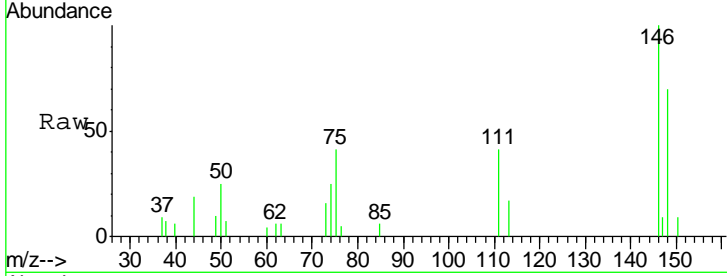
Tgt Ion: 173 Resp: 993
 Ion Ratio Lower Upper
 173 100
 175 46.1 37.8 56.6
 254 0.0 6.8 10.2#





#62
 1,3-Dichlorobenzene
 Concen: 0.204 ug/L
 RT: 11.74 min Scan# 3235
 Delta R.T. 0.00 min
 Lab File: VU040020.D
 Acq: 02 Sep 2020 12:35

Instrument :
 MSVOA_U
 ClientSampled :
 MDL05

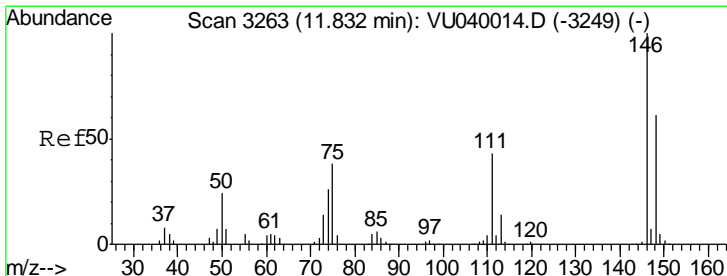
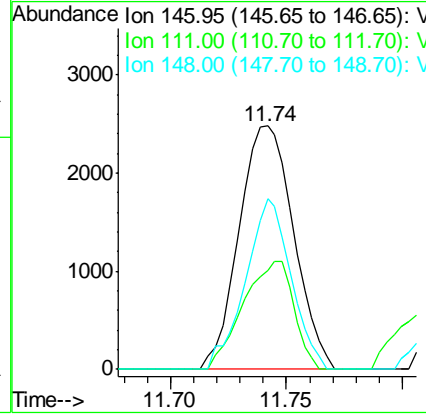
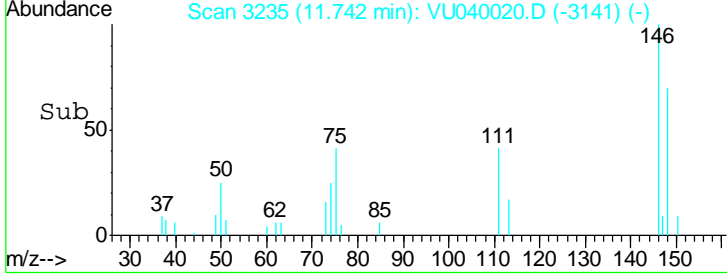


Tgt Ion:146 Resp: 4058

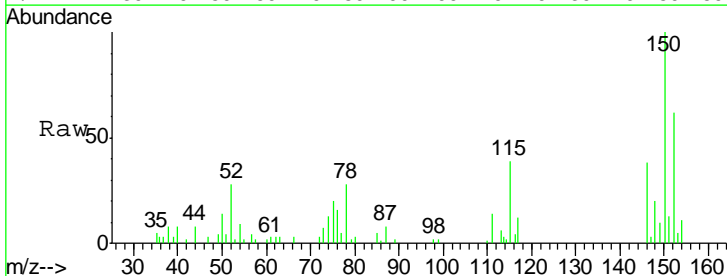
Ion	Ratio	Lower	Upper
146	100		
111	40.6	31.6	58.8
148	70.2	44.2	82.0

Manual Integrations
 APPROVED

MMDadoda
 9/4/2020 2:20:40 PM

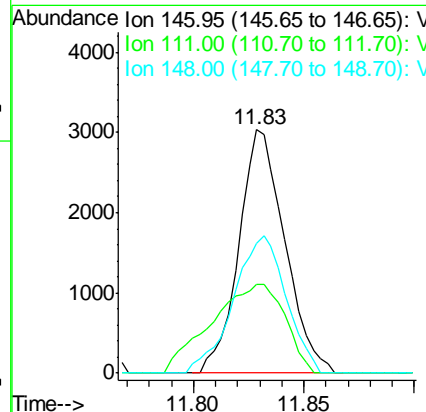
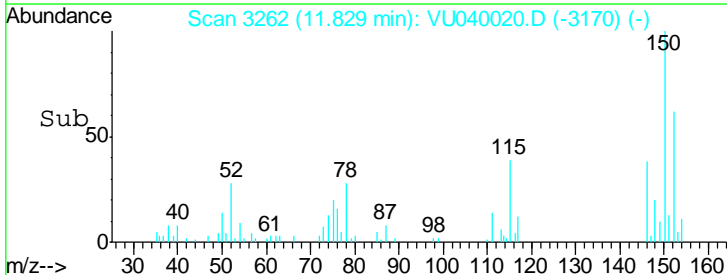


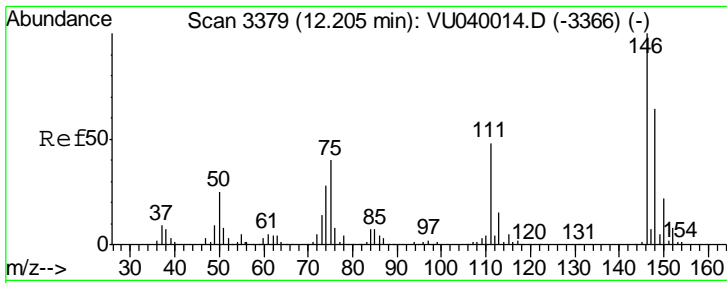
#63
 1,4-Dichlorobenzene
 Concen: 0.219 ug/L
 RT: 11.83 min Scan# 3262
 Delta R.T. -0.00 min
 Lab File: VU040020.D
 Acq: 02 Sep 2020 12:35



Tgt Ion:146 Resp: 4402

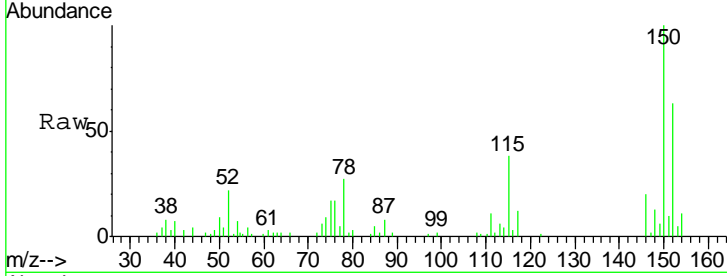
Ion	Ratio	Lower	Upper
146	100		
111	36.7	30.5	56.7
148	53.3	45.4	84.4





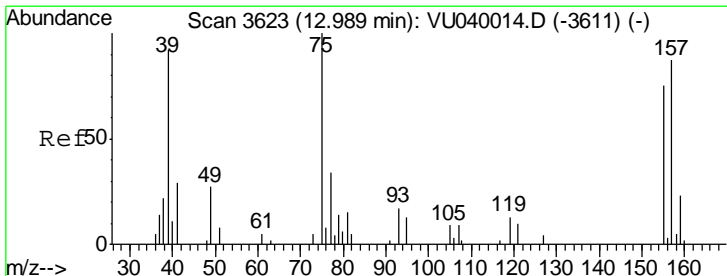
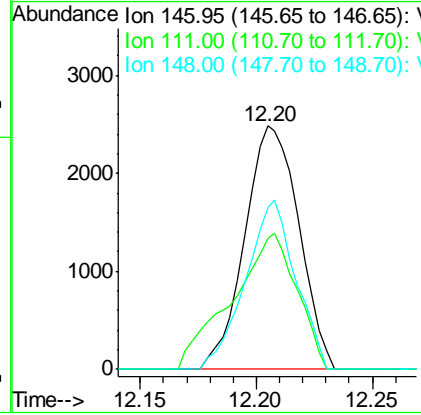
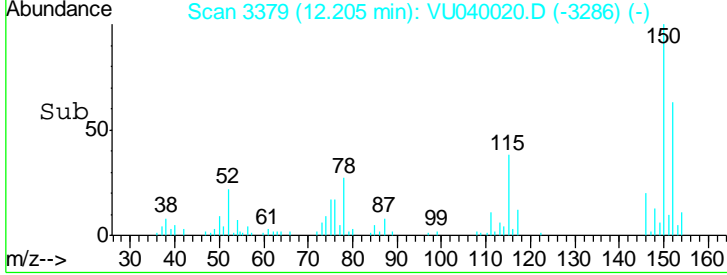
#65
 1,2-Dichlorobenzene
 Concen: 0.209 ug/L
 RT: 12.20 min Scan# 3379
 Delta R.T. 0.00 min
 Lab File: VU040020.D
 Acq: 02 Sep 2020 12:35

Instrument : MSVOA_U
 ClientSampled : MDL05

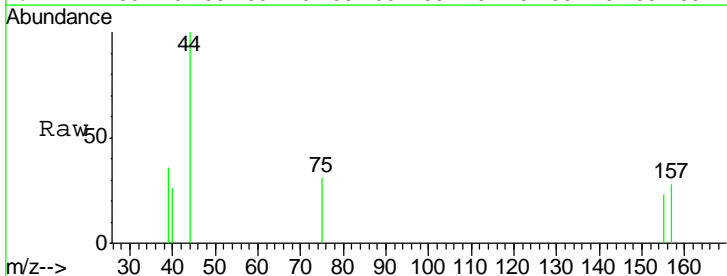


Tgt Ion	Resp	Lower	Upper
146	100		
111	53.7	36.5	54.7
148	66.6	48.6	72.8

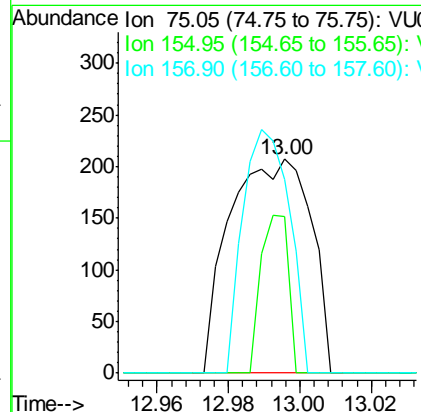
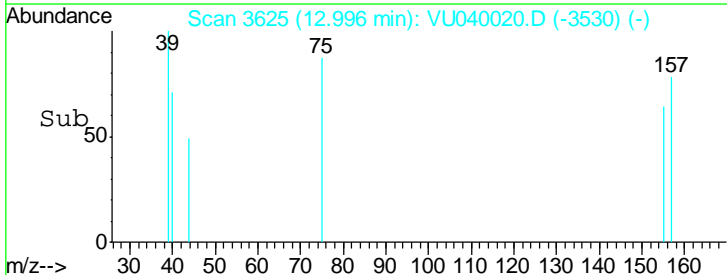
Manual Integrations
APPROVED
 MMDadoda
 9/4/2020 2:20:40 PM

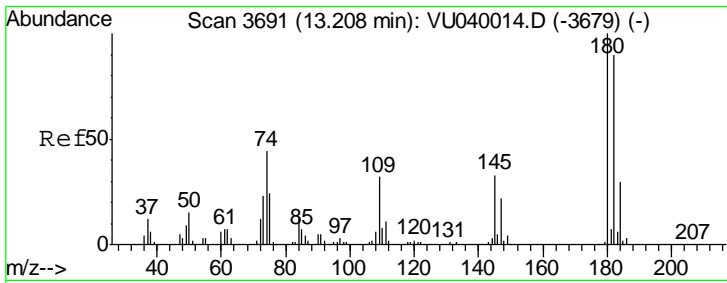


#66
 1,2-Dibromo-3-chloropropane
 Concen: 0.158 ug/L
 RT: 13.00 min Scan# 3625
 Delta R.T. 0.01 min
 Lab File: VU040020.D
 Acq: 02 Sep 2020 12:35



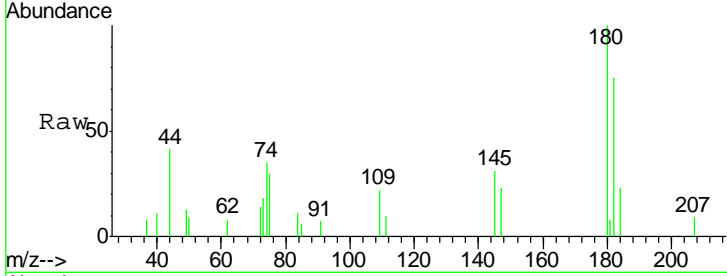
Tgt Ion	Resp	Lower	Upper
75	100		
155	73.4	54.6	82.0
157	90.3	75.6	113.4





#67
 1,3,5-Trichlorobenzene
 Concen: 0.203 ug/L m
 RT: 13.21 min Scan# 3692
 Delta R.T. 0.00 min
 Lab File: VU040020.D
 Acq: 02 Sep 2020 12:35

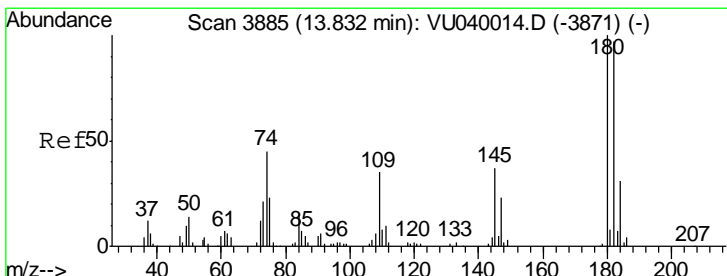
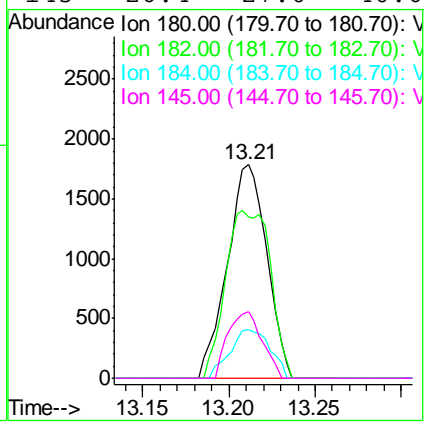
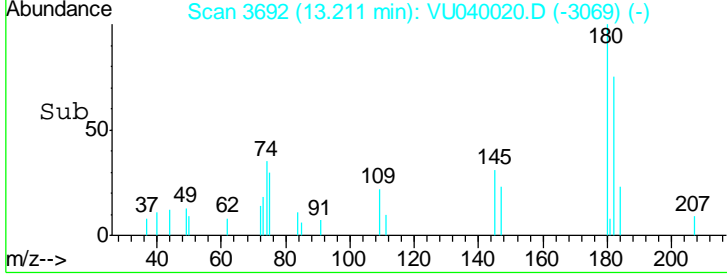
Instrument : MSVOA_U
 ClientSampled : MDL05



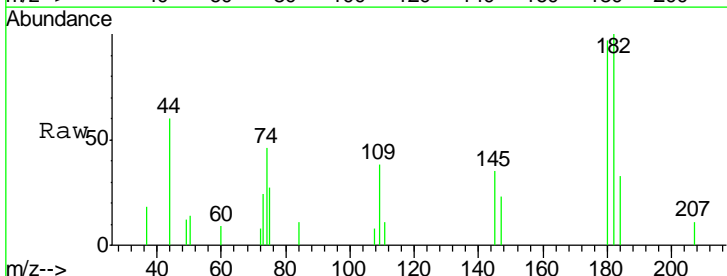
Tgt Ion:180 Resp: 2839

Ion	Ratio	Lower	Upper
180	100		
182	83.0	76.9	115.3
184	23.2	24.6	36.8#
145	26.4	27.0	40.6#

Manual Integrations APPROVED
 MMDadoda
 9/4/2020 2:20:40 PM

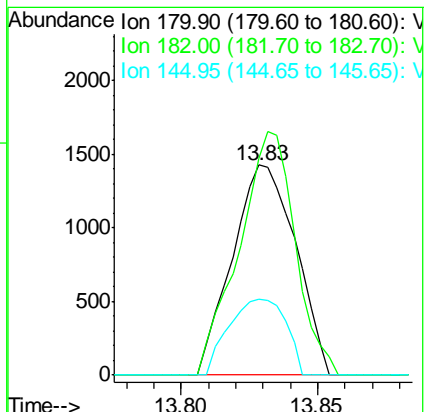
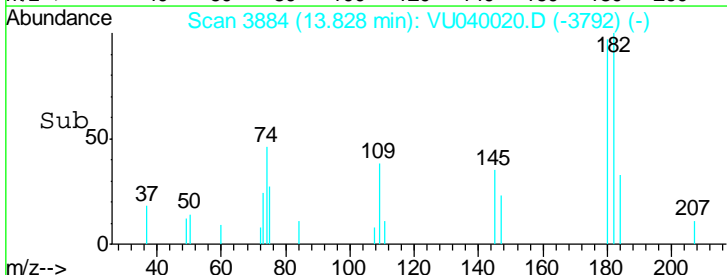


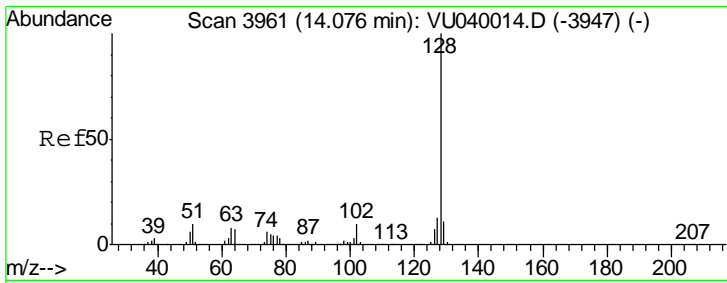
#68
 1,2,4-trichlorobenzene
 Concen: 0.191 ug/L
 RT: 13.83 min Scan# 3884
 Delta R.T. -0.00 min
 Lab File: VU040020.D
 Acq: 02 Sep 2020 12:35



Tgt Ion:180 Resp: 2297

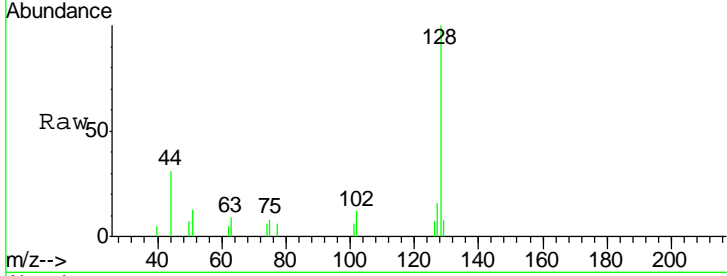
Ion	Ratio	Lower	Upper
180	100		
182	102.6	76.0	114.0
145	32.6	28.4	42.6





#69
 Naphthalene
 Concen: 0.147 ug/L
 RT: 14.08 min Scan# 3961
 Delta R.T. 0.00 min
 Lab File: VU040020.D
 Acq: 02 Sep 2020 12:35

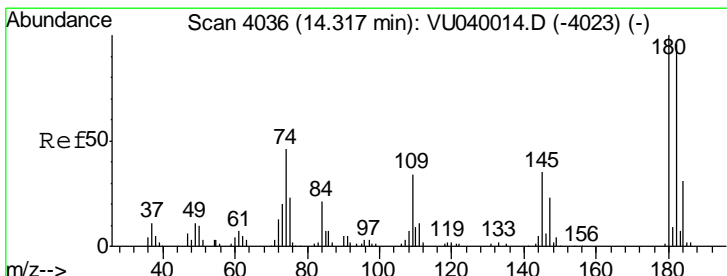
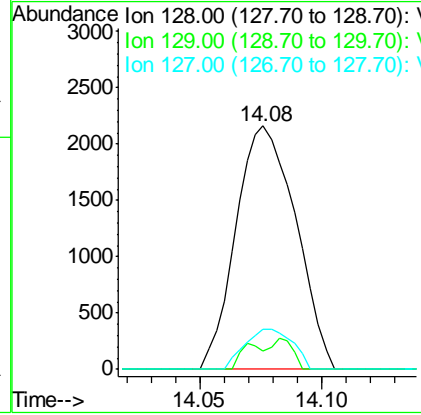
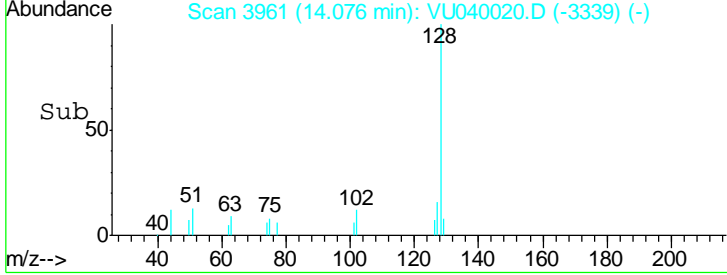
Instrument : MSVOA_U
 ClientSampled : MDL05



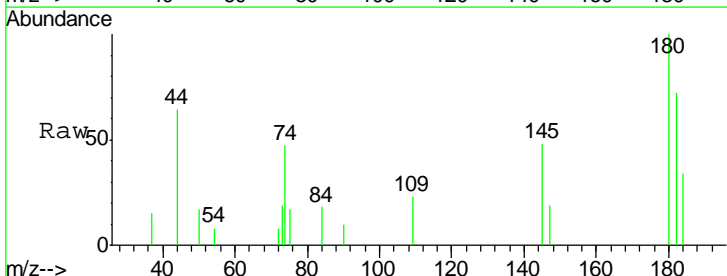
Tgt Ion: 128 Resp: 3678

Ion	Ratio	Lower	Upper
128	100		
129	4.6	8.7	13.1#
127	13.1	10.7	16.1

Manual Integrations
APPROVED
 MMDadoda
 9/4/2020 2:20:40 PM



#70
 1,2,3-Trichlorobenzene
 Concen: 0.187 ug/L
 RT: 14.32 min Scan# 4037
 Delta R.T. 0.00 min
 Lab File: VU040020.D
 Acq: 02 Sep 2020 12:35



Tgt Ion: 180 Resp: 2066

Ion	Ratio	Lower	Upper
180	100		
182	78.8	77.8	116.6
145	38.5	28.7	43.1

