

Data Path : Z:\voasrv\HPCHEM1\MSVOA_U\Data\VU090221\
 Data File : VU044569.D
 Acq On : 02 Sep 2021 21:50
 Operator : SY/MD
 Sample : M3596-07
 Misc : 25.0mL/MSVOA_U/WATER
 ALS Vial : 18 Sample Multiplier: 1

Instrument :
 MSVOA_U
 ClientSampled :

Quant Time: Sep 03 02:47:34 2021
 Quant Method : Z:\voasrv\HPCHEM1\MSVOA_U\Method\SFAMUTR081821WMA.M
 Quant Title : TRACE VOA SFAM1.0
 QLast Update : Fri Sep 03 02:43:14 2021
 Response via : Initial Calibration

Compound	R.T.	QIon	Response	Conc	Units	Dev(Min)

Internal Standards						
1) 1,4-Difluorobenzene	6.256	114	101962	5.000	ug/L	0.00
28) Chlorobenzene-d5	9.423	117	106695	5.000	ug/L	0.00
58) 1,4-Dichlorobenzene-d4	11.819	152	53403	5.000	ug/L	0.00
System Monitoring Compounds						
4) Vinyl Chloride-d3	1.600	65	40424	4.902	ug/L	0.00
Spiked Amount	5.000	Range 40 - 130	Recovery	=	98.000%	
7) Chloroethane-d5	1.919	69	39202	5.470	ug/L	0.00
Spiked Amount	5.000	Range 65 - 130	Recovery	=	109.400%	
11) 1,1-Dichloroethene-d2	2.571	65	16800	4.789	ug/L	0.00
Spiked Amount	5.000	Range 60 - 125	Recovery	=	95.800%	
20) 2-Butanone-d5	4.645	46	76380	33.491	ug/L	0.00
Spiked Amount	50.000	Range 40 - 130	Recovery	=	66.980%	
24) Chloroform-d	5.073	84	73050	5.010	ug/L	0.00
Spiked Amount	5.000	Range 70 - 125	Recovery	=	100.200%	
26) 1,2-Dichloroethane-d4	5.710	65	39752	4.999	ug/L	0.00
Spiked Amount	5.000	Range 70 - 130	Recovery	=	100.000%	
32) Benzene-d6	5.735	84	150854	5.021	ug/L	0.00
Spiked Amount	5.000	Range 70 - 125	Recovery	=	100.400%	
36) 1,2-Dichloropropane-d6	6.697	67	46224	4.809	ug/L	0.00
Spiked Amount	5.000	Range 60 - 140	Recovery	=	96.200%	
41) Toluene-d8	7.902	98	132926	4.989	ug/L	0.00
Spiked Amount	5.000	Range 70 - 130	Recovery	=	99.800%	
43) trans-1,3-Dichloroprop...	8.185	79	15362	4.450	ug/L	0.00
Spiked Amount	5.000	Range 55 - 130	Recovery	=	89.000%	
46) 2-Hexanone-d5	8.645	63	96235	51.555	ug/L	0.00
Spiked Amount	50.000	Range 45 - 130	Recovery	=	103.120%	
56) 1,1,2,2-Tetrachloroeth...	10.761	84	40708	5.029	ug/L	0.00
Spiked Amount	5.000	Range 65 - 120	Recovery	=	100.600%	
66) 1,2-Dichlorobenzene-d4	12.198	152	52041	5.768	ug/L	0.00
Spiked Amount	5.000	Range 80 - 120	Recovery	=	115.400%	

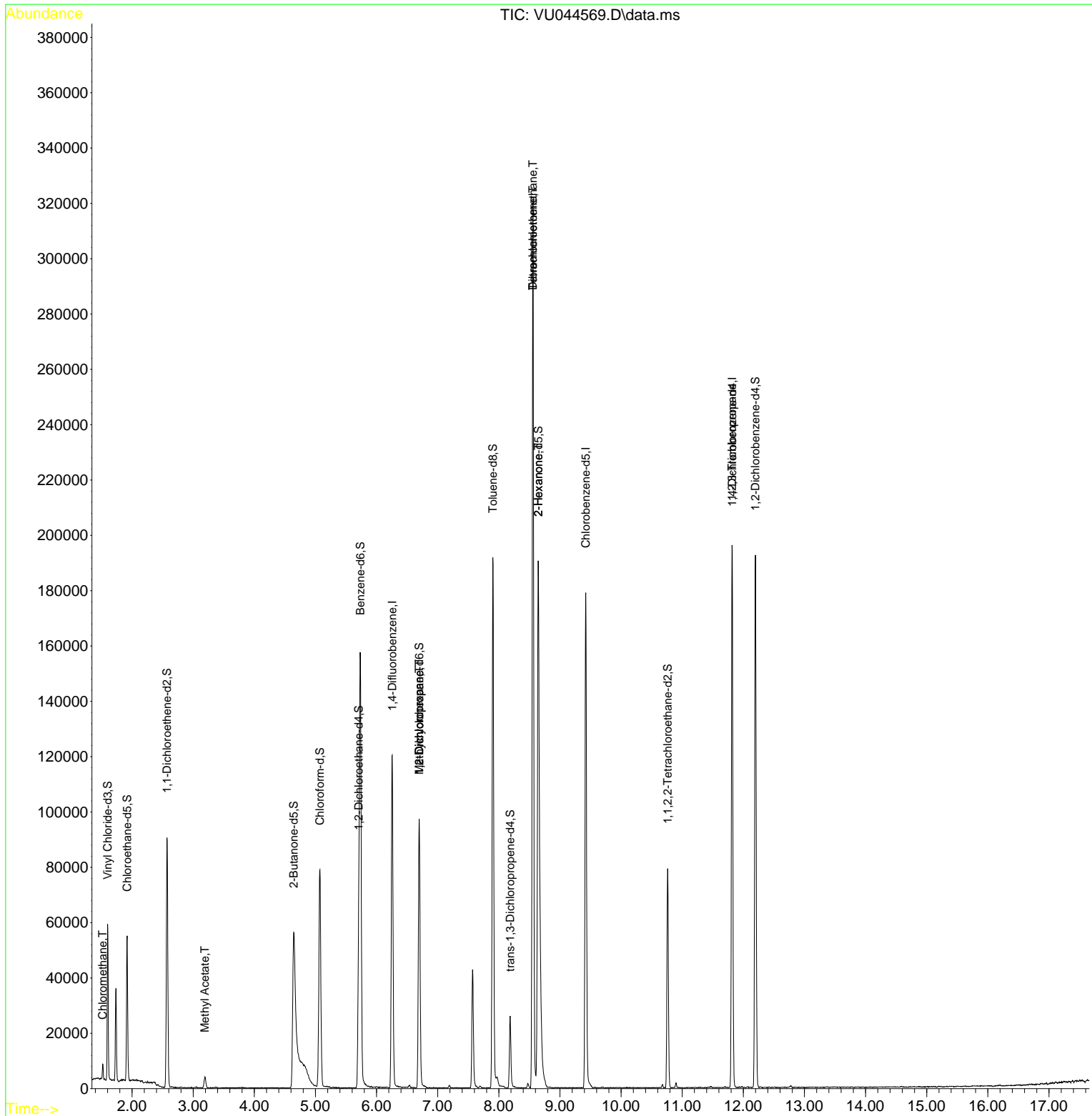
Target Compounds						Qvalue
3) Chloromethane	1.520	50	3564	0.259	ug/L	95
15) Methyl Acetate	3.192	43	274	0.089	ug/L #	52
35) Methylcyclohexane	6.697	83	10940	0.733	ug/L #	17
37) 1,2-Dichloropropane	6.697	63	5074	0.535	ug/L #	88
47) Tetrachloroethene	8.558	164	71148	11.497	ug/L	97
48) 2-Hexanone	8.645	43	13349	2.907	ug/L #	75
49) Dibromochloromethane	8.558	129	65748	9.192	ug/L #	10
61) 1,2,3-Trichloropropane	11.815	75	6636	0.994	ug/L #	66

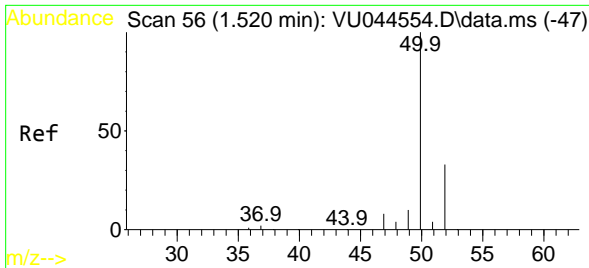
(#) = qualifier out of range (m) = manual integration (+) = signals summed

Data Path : Z:\voasrv\HPCHEM1\MSVOA_U\Data\VU090221\
 Data File : VU044569.D
 Acq On : 02 Sep 2021 21:50
 Operator : SY/MD
 Sample : M3596-07
 Misc : 25.0mL/MSVOA_U/WATER
 ALS Vial : 18 Sample Multiplier: 1

Instrument :
 MSVOA_U
 ClientSampled :

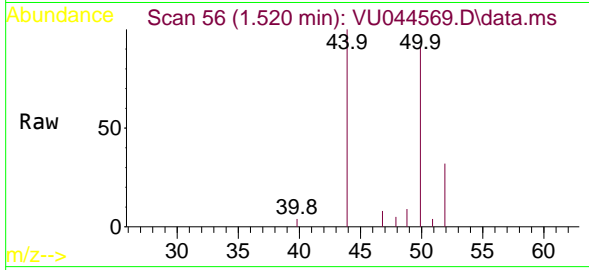
Quant Time: Sep 03 02:47:34 2021
 Quant Method : Z:\voasrv\HPCHEM1\MSVOA_U\Method\SFAMUTR081821WMA.M
 Quant Title : TRACE VOA SFAM1.0
 QLast Update : Fri Sep 03 02:43:14 2021
 Response via : Initial Calibration



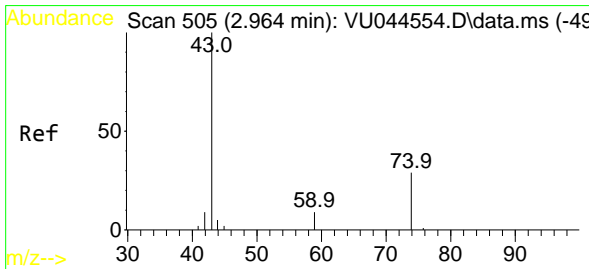
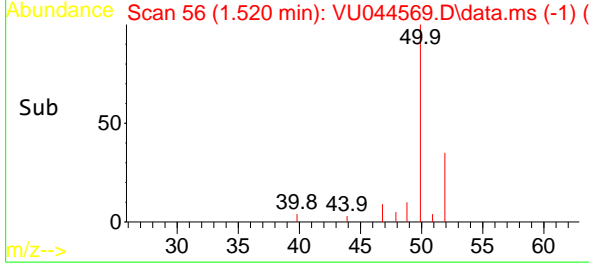
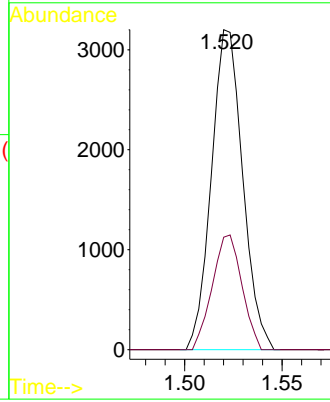


#3
 Chloromethane
 Concen: 0.259 ug/L
 RT: 1.520 min Scan# 56
 Delta R.T. -0.000 min
 Lab File: VU044569.D
 Acq: 02 Sep 2021 21:50

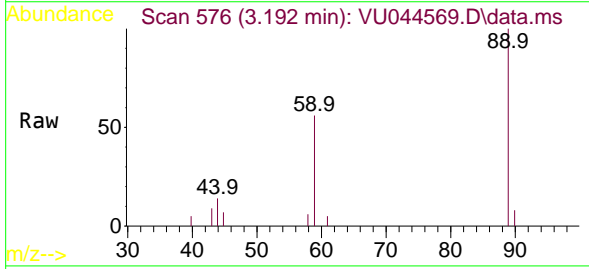
Instrument :
 MSVOA_U
 ClientSampled :



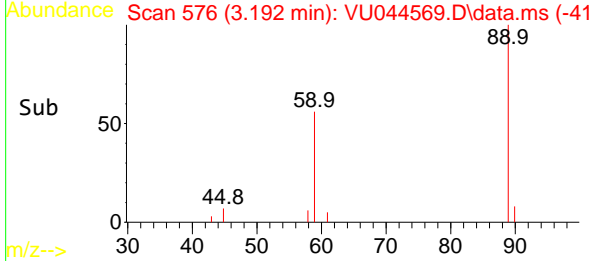
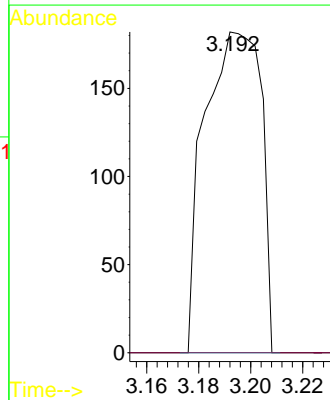
Tgt Ion: 50 Resp: 3564
 Ion Ratio Lower Upper
 50 100
 52 35.1 22.8 42.4

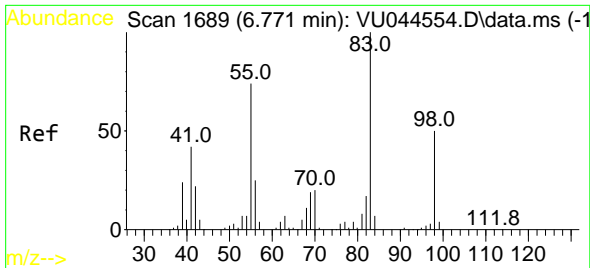


#15
 Methyl Acetate
 Concen: 0.089 ug/L
 RT: 3.192 min Scan# 576
 Delta R.T. 0.228 min
 Lab File: VU044569.D
 Acq: 02 Sep 2021 21:50



Tgt Ion: 43 Resp: 274
 Ion Ratio Lower Upper
 43 100
 74 0.0 19.0 28.4#



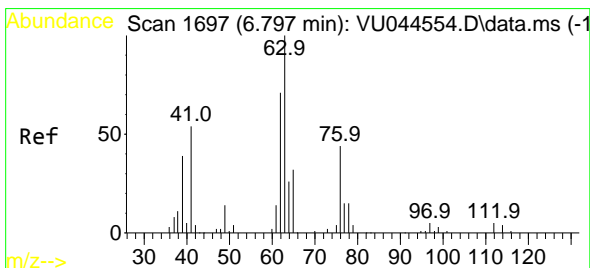
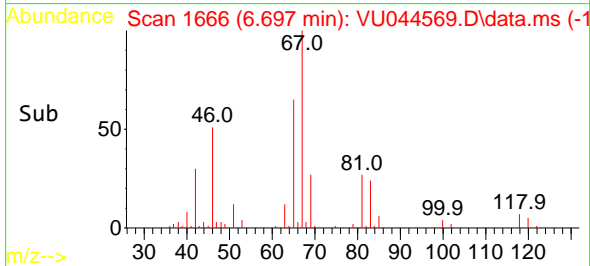
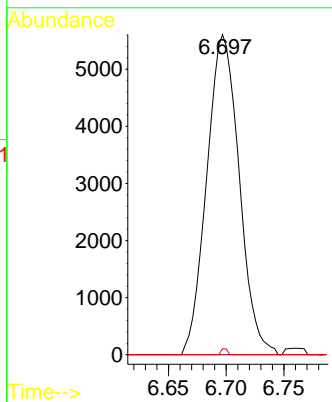
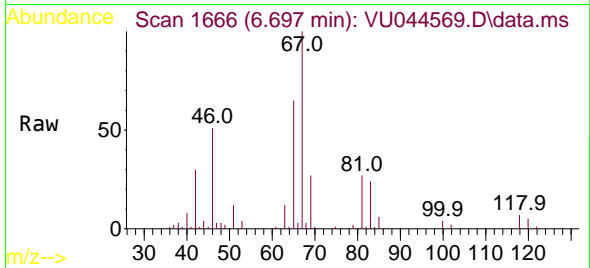


#35
 Methylcyclohexane
 Concen: 0.733 ug/L
 RT: 6.697 min Scan# 1666
 Delta R.T. -0.074 min
 Lab File: VU044569.D
 Acq: 02 Sep 2021 21:50

Instrument :
 MSVOA_U
 ClientSampled :

Tgt Ion: 83 Resp: 10940

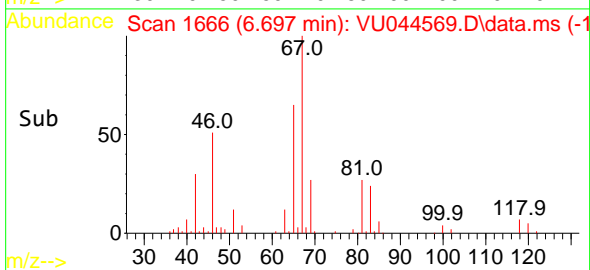
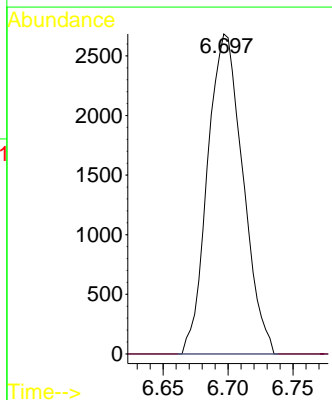
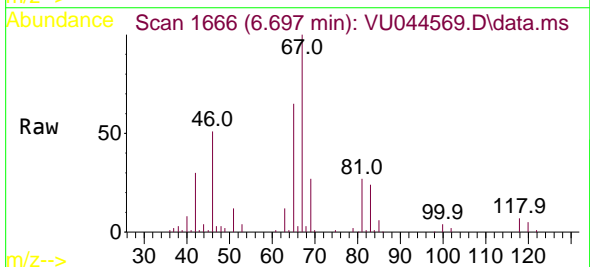
Ion	Ratio	Lower	Upper
83	100		
55	0.0	64.8	97.2#
98	0.4	37.5	56.3#

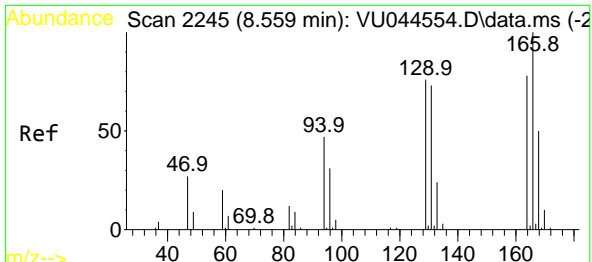


#37
 1,2-Dichloropropane
 Concen: 0.535 ug/L
 RT: 6.697 min Scan# 1666
 Delta R.T. -0.100 min
 Lab File: VU044569.D
 Acq: 02 Sep 2021 21:50

Tgt Ion: 63 Resp: 5074

Ion	Ratio	Lower	Upper
63	100		
112	0.0	3.3	4.9#



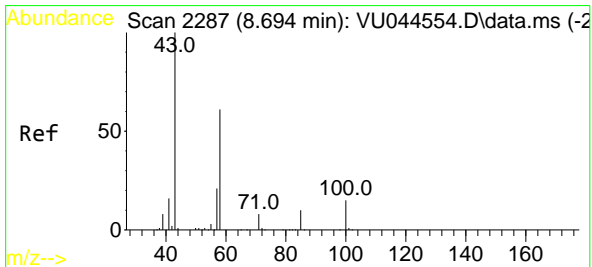
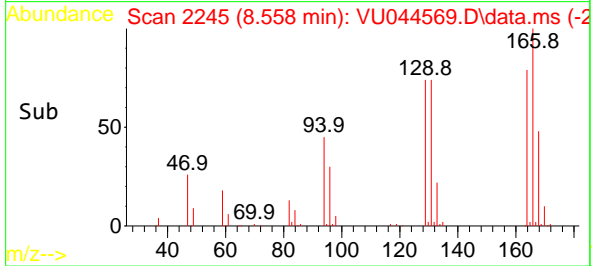
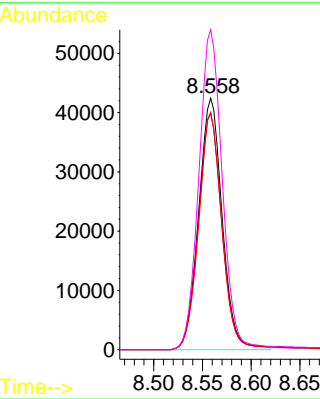
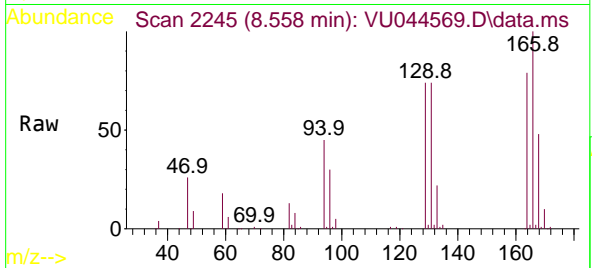


#47
 Tetrachloroethene
 Concen: 11.497 ug/L
 RT: 8.558 min Scan# 2245
 Delta R.T. -0.000 min
 Lab File: VU044569.D
 Acq: 02 Sep 2021 21:50

Instrument :
 MSVOA_U
 ClientSampled :

Tgt Ion:164 Resp: 71148

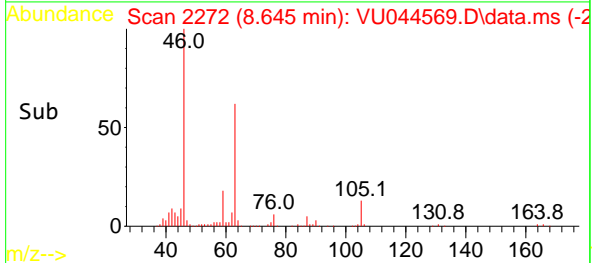
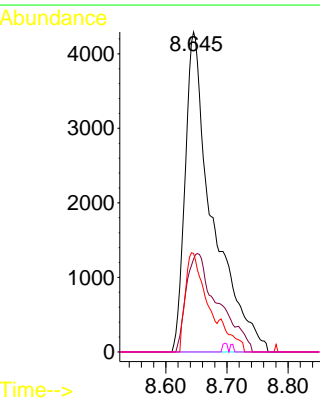
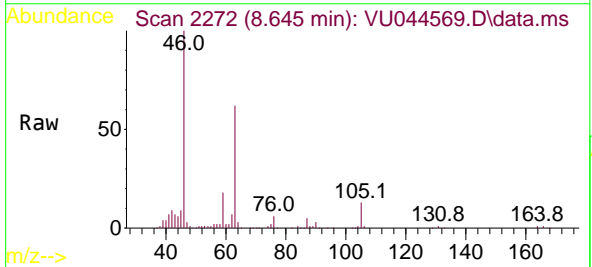
Ion	Ratio	Lower	Upper
164	100		
129	93.9	71.0	131.8
131	94.4	68.0	126.4
166	127.2	89.0	165.4

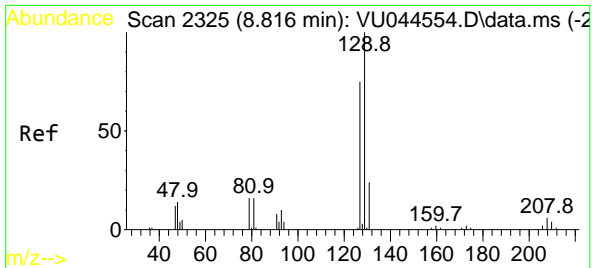


#48
 2-Hexanone
 Concen: 2.907 ug/L
 RT: 8.645 min Scan# 2272
 Delta R.T. -0.048 min
 Lab File: VU044569.D
 Acq: 02 Sep 2021 21:50

Tgt Ion: 43 Resp: 13349

Ion	Ratio	Lower	Upper
43	100		
58	35.8	46.5	69.7#
57	22.8	15.8	23.8
100	0.5	9.8	14.8#

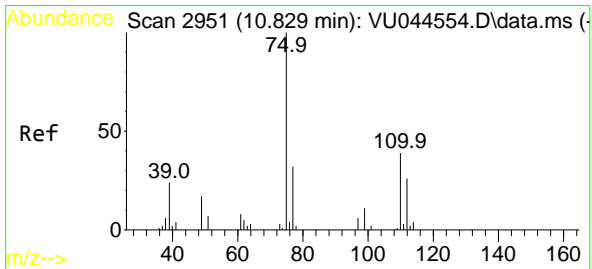
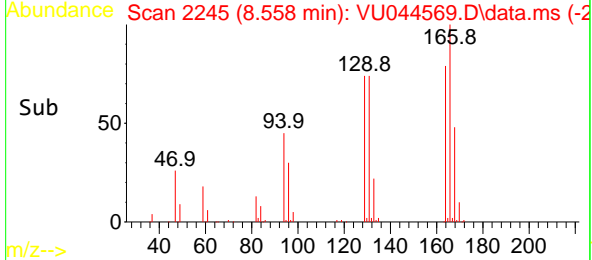
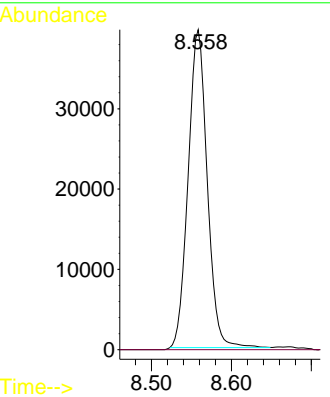
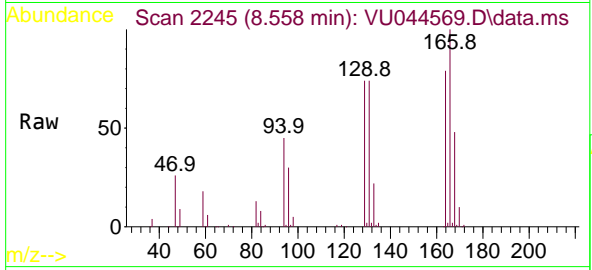




#49
 Dibromochloromethane
 Concen: 9.192 ug/L
 RT: 8.558 min Scan# 2245
 Delta R.T. -0.257 min
 Lab File: VU044569.D
 Acq: 02 Sep 2021 21:50

Instrument :
 MSVOA_U
 ClientSampled :

Tgt Ion:129 Resp: 65748
 Ion Ratio Lower Upper
 129 100
 127 0.0 54.7 101.7#



#61
 1,2,3-Trichloropropane
 Concen: 0.994 ug/L
 RT: 11.815 min Scan# 3258
 Delta R.T. 0.987 min
 Lab File: VU044569.D
 Acq: 02 Sep 2021 21:50

Tgt Ion: 75 Resp: 6636
 Ion Ratio Lower Upper
 75 100
 110 1.0 28.4 42.6#
 77 28.5 26.5 39.7

