

Data Path : Z:\VOASRV\HPCHEM1\MSVOA U\DATA\VU090320\
 Data File : VU040035.D
 Acq On : 03 Sep 2020 16:13
 Operator : SY/MD
 Sample : L3905-01
 Misc : 25.0mL/MSVOA U/WATER
 ALS Vial : 10 Sample Multiplier: 1

Instrument :
 MSVOA_U
 ClientSampled :
 BFWS7

Integration Parameters: rteint.p

Integrator: RTE
 Smoothing : ON
 Sampling : 1
 Start Thrs: 0.1
 Stop Thrs : 0

Filtering: 5
 Min Area: 3 % of largest Peak
 Max Peaks: 100
 Peak Location: TOP

If leading or trailing edge < 100 prefer < Baseline drop else tangent >
 Peak separation: 5

Method : Z:\VOASRV\HPCHEM1\MSVOA_U\METHOD\SOMUTR083120WMA.M
 Title : TRACE VOA SOM01.0

Signal : TIC

| peak # | R.T. min | first scan | max scan | last scan | PK TY | peak height | corr. area | corr. % max. | % of total |
|--------|----------|------------|----------|-----------|-------|-------------|------------|--------------|------------|
| 1 | 1.526 | 52 | 58 | 66 | rBV | 9570 | 10772 | 2.05% | 0.282% |
| 2 | 1.604 | 75 | 82 | 94 | rVB | 43918 | 49200 | 9.36% | 1.286% |
| 3 | 1.922 | 170 | 181 | 193 | rVB | 38915 | 51106 | 9.73% | 1.336% |
| 4 | 2.465 | 340 | 350 | 360 | rVB3 | 8033 | 13163 | 2.51% | 0.344% |
| 5 | 2.578 | 374 | 385 | 397 | rBV | 82655 | 133673 | 25.44% | 3.493% |
| 6 | 2.645 | 397 | 406 | 424 | rVB3 | 9707 | 18093 | 3.44% | 0.473% |
| 7 | 2.803 | 435 | 455 | 456 | rBV3 | 9898 | 15347 | 2.92% | 0.401% |
| 8 | 4.642 | 1010 | 1027 | 1049 | rBV | 80921 | 202374 | 38.52% | 5.289% |
| 9 | 4.822 | 1070 | 1083 | 1099 | rVB2 | 9778 | 22344 | 4.25% | 0.584% |
| 10 | 5.079 | 1147 | 1163 | 1186 | rBV | 80794 | 185525 | 35.31% | 4.848% |
| 11 | 5.739 | 1347 | 1368 | 1388 | rBV2 | 152059 | 399211 | 75.99% | 10.433% |
| 12 | 6.259 | 1516 | 1530 | 1545 | rBV | 149988 | 281726 | 53.62% | 7.362% |
| 13 | 6.700 | 1652 | 1667 | 1685 | rBV | 100491 | 195345 | 37.18% | 5.105% |
| 14 | 7.571 | 1926 | 1938 | 1952 | rBV3 | 49956 | 88029 | 16.76% | 2.300% |
| 15 | 7.719 | 1977 | 1984 | 1994 | rVB3 | 4327 | 6842 | 1.30% | 0.179% |
| 16 | 7.902 | 2027 | 2041 | 2055 | rBV | 176462 | 301295 | 57.35% | 7.874% |
| 17 | 8.185 | 2117 | 2129 | 2142 | rBV2 | 33295 | 57853 | 11.01% | 1.512% |
| 18 | 8.639 | 2257 | 2270 | 2307 | rBV | 300708 | 525370 | 100.00% | 13.729% |
| 19 | 8.790 | 2307 | 2317 | 2327 | rBV4 | 12964 | 22213 | 4.23% | 0.580% |
| 20 | 9.420 | 2499 | 2513 | 2532 | rBV | 223213 | 373335 | 71.06% | 9.756% |
| 21 | 10.754 | 2914 | 2928 | 2943 | rBV2 | 78549 | 126892 | 24.15% | 3.316% |
| 22 | 11.465 | 3137 | 3149 | 3162 | rBV5 | 4285 | 6581 | 1.25% | 0.172% |
| 23 | 11.806 | 3243 | 3255 | 3272 | rVB | 228337 | 357383 | 68.03% | 9.339% |
| 24 | 12.053 | 3321 | 3332 | 3344 | rBV3 | 23540 | 36494 | 6.95% | 0.954% |
| 25 | 12.188 | 3362 | 3374 | 3387 | rBV | 192524 | 311485 | 59.29% | 8.140% |
| 26 | 12.880 | 3581 | 3589 | 3598 | rVB4 | 9297 | 12850 | 2.45% | 0.336% |
| 27 | 13.201 | 3680 | 3689 | 3698 | rVB3 | 11055 | 15471 | 2.94% | 0.404% |
| 28 | 16.108 | 4586 | 4593 | 4601 | rVB9 | 4982 | 6629 | 1.26% | 0.173% |

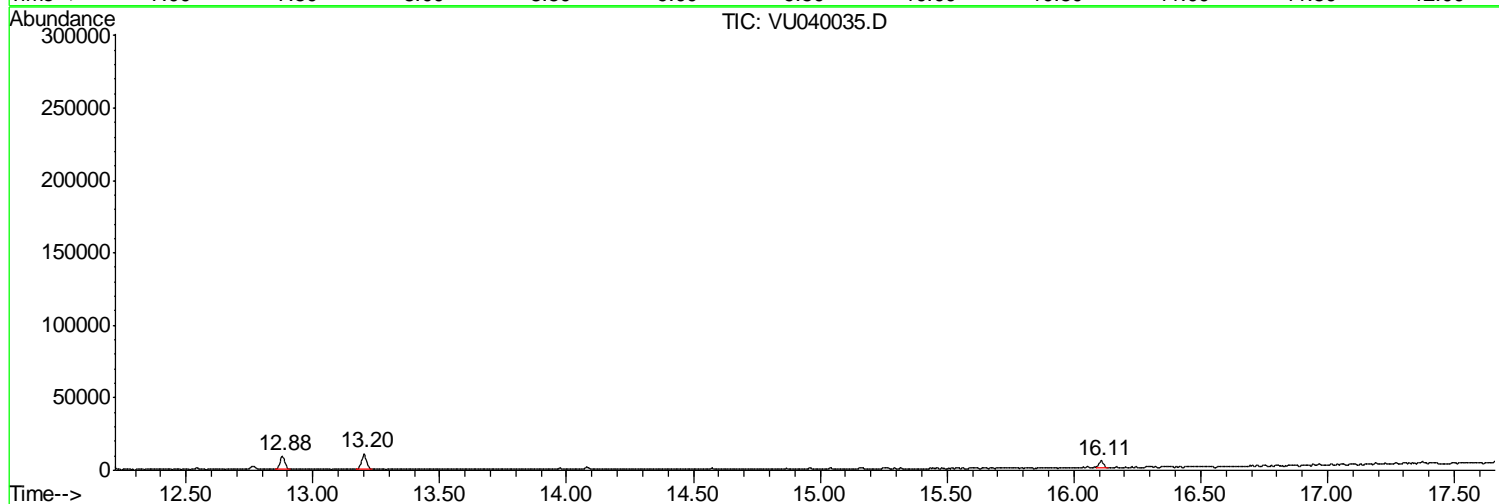
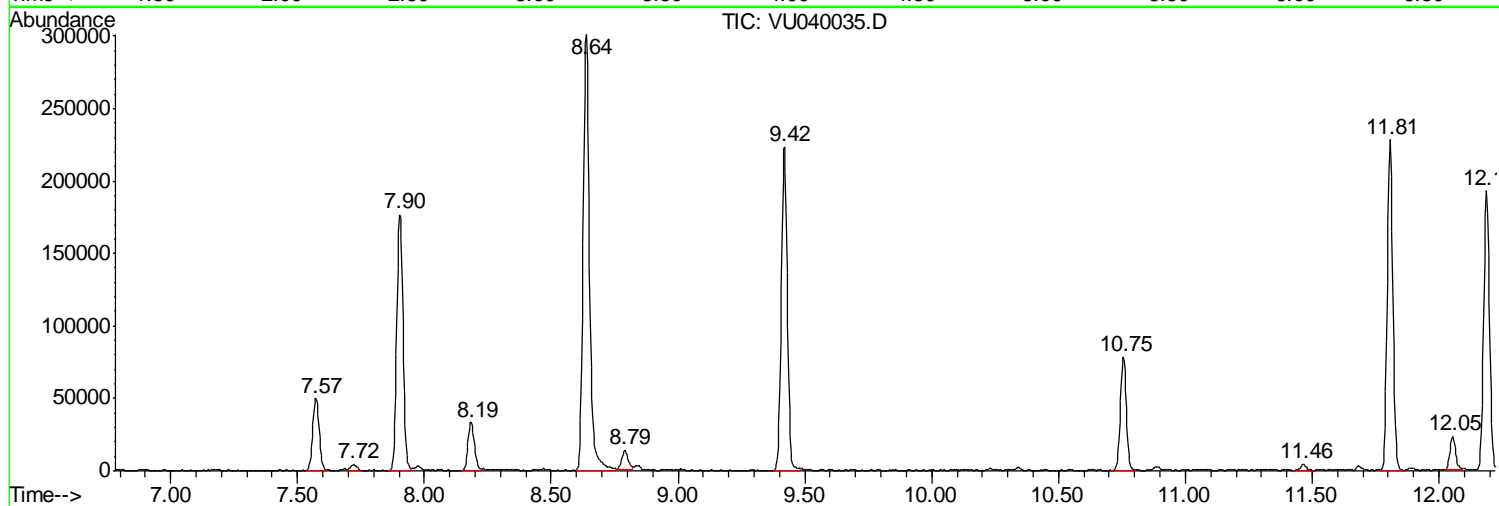
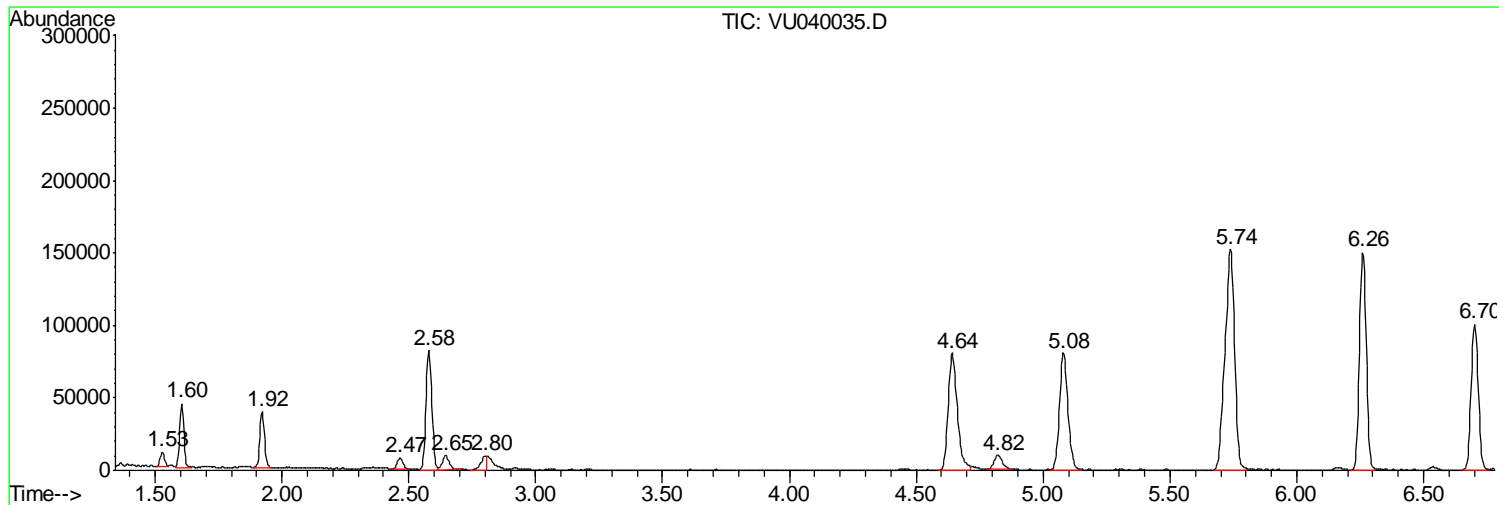
Sum of corrected areas: 3826601

Data Path : Z:\VOASRV\HPCHEM1\MSVOA U\DATA\VU090320\
Data File : VU040035.D
Acq On : 03 Sep 2020 16:13
Operator : SY/MD
Sample : L3905-01
Misc : 25.0mL/MSVOA U/WATER
ALS Vial : 10 Sample Multiplier: 1

Instrument :
MSVOA_U
ClientSampled :
BFWS7

Quant Method : Z:\VOASRV\HPCHEM1\MSVOA_U\METHOD\SOMUTR083120WMA.M
Quant Title : TRACE VOA SOM01.0

TIC Library : C:\DATABASE\NIST11.L
TIC Integration Parameters: LSCINT.P



Data Path : Z:\VOASRV\HPCHEM1\MSVOA U\DATA\VU090320\
 Data File : VU040035.D
 Acq On : 03 Sep 2020 16:13
 Operator : SY/MD
 Sample : L3905-01
 Misc : 25.0mL/MSVOA U/WATER
 ALS Vial : 10 Sample Multiplier: 1

Instrument :
 MSVOA_U
 ClientSampleID :
 BFWS7

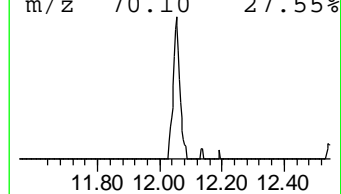
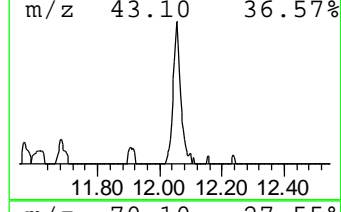
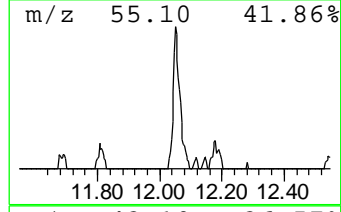
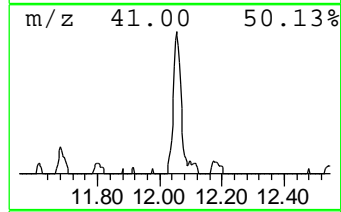
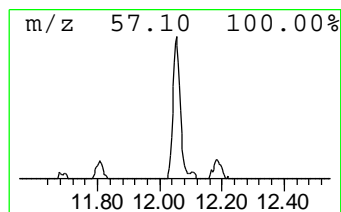
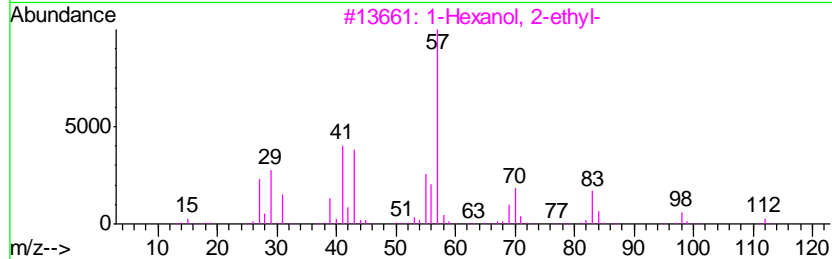
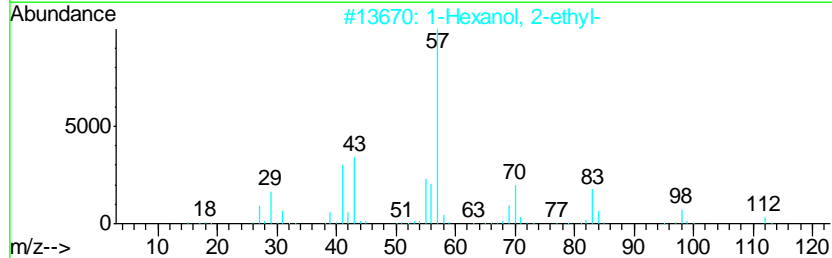
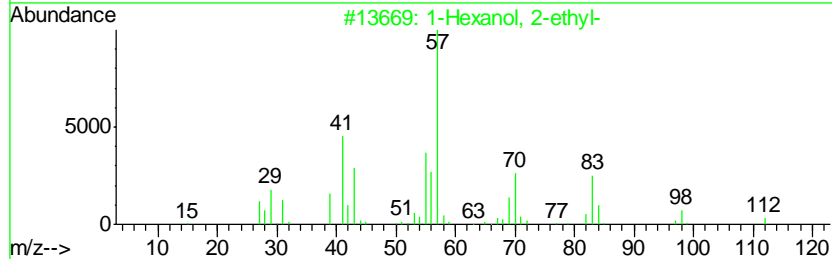
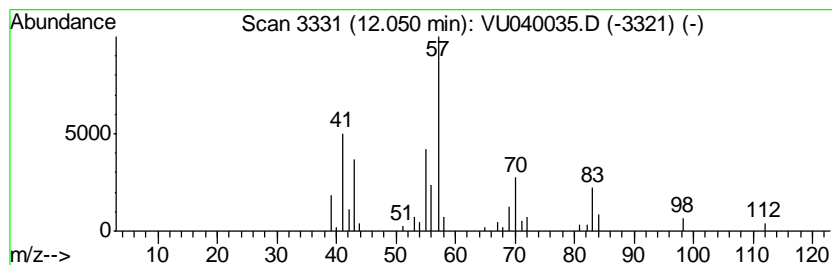
Quant Method : Z:\VOASRV\HPCHEM1\MSVOA_U\METHOD\SOMUTR083120WMA.M
 Quant Title : TRACE VOA SOM01.0

TIC Library : C:\DATABASE\NIST11.L
 TIC Integration Parameters: LSCINT.P

 Peak Number 2 1-Hexanol, 2-ethyl- Concentration Rank 2

| R.T. | EstConc | Area | Relative to ISTD | R.T. |
|-------|-----------|-------|------------------------|-------|
| 12.05 | 0.51 ug/L | 36494 | 1,4-Dichlorobenzene-d4 | 11.81 |

| Hit# | of | Tentative ID | MW | MolForm | CAS# | Qual |
|------|----|-------------------------------|-----|---------|-------------|------|
| 1 | 5 | 1-Hexanol, 2-ethyl- | 130 | C8H18O | 000104-76-7 | 78 |
| 2 | | 1-Hexanol, 2-ethyl- | 130 | C8H18O | 000104-76-7 | 72 |
| 3 | | 1-Hexanol, 2-ethyl- | 130 | C8H18O | 000104-76-7 | 64 |
| 4 | | 1-Hexanol, 2-ethyl- | 130 | C8H18O | 000104-76-7 | 59 |
| 5 | | 1-Pentanol, 2-ethyl-4-methyl- | 130 | C8H18O | 000106-67-2 | 53 |



Data Path : Z:\VOASRV\HPCHEM1\MSVOA_U\DATA\VU090320\
Data File : VU040035.D
Acq On : 03 Sep 2020 16:13
Operator : SY/MD
Sample : L3905-01
Misc : 25.0mL/MSVOA_U/WATER
ALS Vial : 10 Sample Multiplier: 1

Instrument :
MSVOA_U
ClientSampleId :
BFWS7

Quant Method : Z:\VOASRV\HPCHEM1\MSVOA_U\METHOD\SOMUTR083120WMA.M
Quant Title : TRACE VOA SOM01.0

TIC Library : C:\DATABASE\NIST11.L
TIC Integration Parameters: LSCINT.P

| TIC Top Hit name | RT | EstConc | Units | Response | --Internal Standard-- | | | |
|---------------------|-------|---------|-------|----------|-----------------------|-------|--------|------|
| | | | | | # | RT | Resp | Conc |
| 1-Hexanol, 2-ethyl- | 12.05 | 0.5 | ug/L | 36494 | 3 | 11.81 | 357383 | 5.0 |