

Data Path : Z:\VOASRV\HPCHEM1\MSVOA U\DATA\VU090518\
 Data File : VU026559.D
 Acq On : 05 Sep 2018 22:02
 Operator : MD/SY
 Sample : J4718-04
 Misc : 5.0mL/MSVOA U/WATER
 ALS Vial : 33 Sample Multiplier: 1

Instrument :
 MSVOA_U
 ClientSampled :
 BEGC0

Integration Parameters: LSCINT.P

Integrator: RTE
 Smoothing : OFF
 Sampling : 1
 Start Thrs: 0.2
 Stop Thrs : 0

Filtering: 5
 Min Area: 0 % of largest Peak
 Max Peaks: 100
 Peak Location: TOP

If leading or trailing edge < 100 prefer < Baseline drop else tangent >
 Peak separation: 5

Method : Z:\VOASRV\HPCHEM1\MSVOA_U\METHOD\SOMULM082918WMA.M
 Title : VOC Analysis

Signal : TIC

peak #	R.T. min	first scan	max scan	last scan	PK TY	peak height	corr. area	corr. % max.	% of total
1	0.619	5	9	12	rBV	126	91	0.02%	0.002%
2	0.686	27	30	33	rBV	184	171	0.03%	0.004%
3	0.732	41	44	46	rBV	267	168	0.03%	0.004%
4	0.841	75	78	80	rBV	122	111	0.02%	0.003%
5	1.088	136	155	170	rBV	122140	143276	28.10%	3.278%
6	1.397	244	251	262	rBV	68657	70157	13.76%	1.605%
7	1.680	331	339	352	rVB	58402	74065	14.52%	1.695%
8	2.268	512	522	532	rBV	112626	171171	33.57%	3.916%
9	2.323	532	539	559	rVB	17979	29144	5.72%	0.667%
10	2.394	559	561	566	rVB	366	231	0.05%	0.005%
11	2.436	571	574	578	rBV3	284	262	0.05%	0.006%
12	2.619	624	631	635	rBV2	422	594	0.12%	0.014%
13	2.699	652	656	657	rBV	306	183	0.04%	0.004%
14	2.789	675	684	693	rBV4	2619	4781	0.94%	0.109%
15	3.075	772	773	778	rVB	202	102	0.02%	0.002%
16	3.577	923	929	935	rBV2	309	523	0.10%	0.012%
17	3.664	953	956	961	rBV2	154	162	0.03%	0.004%
18	3.818	1002	1004	1007	rVV2	155	94	0.02%	0.002%
19	3.934	1037	1040	1044	rBV	184	119	0.02%	0.003%
20	3.973	1048	1052	1056	rBV2	154	137	0.03%	0.003%
21	4.072	1080	1083	1085	rBV	186	157	0.03%	0.004%
22	4.085	1085	1087	1090	rVV	157	91	0.02%	0.002%
23	4.114	1092	1096	1099	rBV	160	144	0.03%	0.003%
24	4.178	1102	1116	1143	rBV	50006	128692	25.24%	2.945%
25	4.362	1169	1173	1175	rVB2	227	141	0.03%	0.003%
26	4.394	1180	1183	1185	rBV	327	143	0.03%	0.003%
27	4.419	1189	1191	1194	rVB	256	127	0.02%	0.003%
28	4.532	1221	1226	1233	rBV2	234	291	0.06%	0.007%
29	4.651	1246	1263	1283	rBV	89559	207298	40.65%	4.743%
30	4.767	1296	1299	1300	rBV	168	114	0.02%	0.003%
31	4.995	1362	1370	1381	rBV5	958	1813	0.36%	0.041%
32	5.342	1454	1478	1503	rBV2	171832	509930	100.00%	11.667%
33	5.522	1532	1534	1537	rBV	138	118	0.02%	0.003%
34	5.551	1537	1543	1545	rVV	115	149	0.03%	0.003%

Data Path : Z:\VOASRV\HPCHEM1\MSVOA U\DATA\VU090518\
 Data File : VU026559.D
 Acq On : 05 Sep 2018 22:02
 Operator : MD/SY
 Sample : J4718-04
 Misc : 5.0mL/MSVOA U/WATER
 ALS Vial : 33 Sample Multiplier: 1

Instrument :
 MSVOA_U
 ClientSampleId :
 BEGC0

Integration Parameters: LSCINT.P

Integrator: RTE
 Smoothing : OFF
 Sampling : 1
 Start Thrs: 0.2
 Stop Thrs : 0

Filtering: 5
 Min Area: 0 % of largest Peak
 Max Peaks: 100
 Peak Location: TOP

If leading or trailing edge < 100 prefer < Baseline drop else tangent >
 Peak separation: 5

Method : Z:\VOASRV\HPCHEM1\MSVOA_U\METHOD\SOMULM082918WMA.M
 Title : VOC Analysis

35	5.780	1611	1614	1618	rVB2	211	149	0.03%	0.003%
36	5.889	1633	1648	1669	rBV	198502	382198	74.95%	8.745%
37	6.188	1738	1741	1746	rVB2	344	260	0.05%	0.006%
38	6.262	1762	1764	1767	rBV	159	109	0.02%	0.002%
39	6.333	1773	1786	1802	rBV	123514	244260	47.90%	5.589%
40	6.407	1807	1809	1813	rVB	302	153	0.03%	0.004%
41	6.442	1817	1820	1822	rVB2	177	106	0.02%	0.002%
42	6.461	1824	1826	1828	rVV	171	91	0.02%	0.002%
43	6.519	1840	1844	1847	rBV	97	83	0.02%	0.002%
44	6.706	1900	1902	1905	rVB2	186	104	0.02%	0.002%
45	6.747	1912	1915	1922	rVB	111	98	0.02%	0.002%
46	6.857	1945	1949	1952	rBV2	398	350	0.07%	0.008%
47	6.963	1980	1982	1985	rVB2	187	99	0.02%	0.002%
48	7.230	2054	2065	2088	rBV	64165	110843	21.74%	2.536%
49	7.381	2108	2112	2116	rBV2	200	217	0.04%	0.005%
50	7.567	2157	2170	2190	rBV	224761	384075	75.32%	8.788%
51	7.850	2248	2258	2274	rBV	45209	73966	14.51%	1.692%
52	7.982	2297	2299	2302	rVB	181	87	0.02%	0.002%
53	8.005	2302	2306	2308	rBV2	155	117	0.02%	0.003%
54	8.021	2308	2311	2312	rVV	174	115	0.02%	0.003%
55	8.185	2349	2362	2368	rBV	8412	15683	3.08%	0.359%
56	8.230	2370	2376	2386	rVB3	8716	13869	2.72%	0.317%
57	8.313	2391	2402	2430	rVB	166851	282380	55.38%	6.461%
58	8.509	2461	2463	2465	rVB	203	95	0.02%	0.002%
59	8.580	2476	2485	2499	rBV3	4309	7879	1.55%	0.180%
60	8.767	2539	2543	2546	rBV	116	109	0.02%	0.002%
61	8.786	2547	2549	2556	rVB	268	154	0.03%	0.004%
62	9.091	2631	2644	2671	rBV	282958	460194	90.25%	10.529%
63	9.252	2692	2694	2695	rBV	247	97	0.02%	0.002%
64	9.406	2734	2742	2752	rBV2	5030	10628	2.08%	0.243%
65	9.503	2769	2772	2776	rVB2	345	260	0.05%	0.006%
66	9.905	2894	2897	2902	rVB	190	151	0.03%	0.003%
67	10.313	3020	3024	3028	rBV	184	171	0.03%	0.004%
68	10.432	3049	3061	3081	rBV	171879	275362	54.00%	6.300%
69	10.609	3106	3116	3130	rVB2	4533	7818	1.53%	0.179%
70	10.876	3193	3199	3204	rVB2	490	370	0.07%	0.008%
71	11.307	3331	3333	3339	rVB	164	103	0.02%	0.002%

Data Path : Z:\VOASRV\HPCHEM1\MSVOA U\DATA\VU090518\
 Data File : VU026559.D
 Acq On : 05 Sep 2018 22:02
 Operator : MD/SY
 Sample : J4718-04
 Misc : 5.0mL/MSVOA U/WATER
 ALS Vial : 33 Sample Multiplier: 1

Instrument :
 MSVOA_U
 ClientSampleId :
 BEGC0

Integration Parameters: LSCINT.P

Integrator: RTE
 Smoothing : OFF
 Sampling : 1
 Start Thrs: 0.2
 Stop Thrs : 0

Filtering: 5
 Min Area: 0 % of largest Peak
 Max Peaks: 100
 Peak Location: TOP

If leading or trailing edge < 100 prefer < Baseline drop else tangent >
 Peak separation: 5

Method : Z:\VOASRV\HPCHEM1\MSVOA_U\METHOD\SOMULM082918WMA.M
 Title : VOC Analysis

72	11.487	3377	3389	3407	rBV	253435	390908	76.66%	8.944%
73	11.754	3466	3472	3479	rBV3	1051	1452	0.28%	0.033%
74	11.863	3493	3506	3523	rBV	220958	355712	69.76%	8.139%
75	11.966	3536	3538	3544	rVB2	217	123	0.02%	0.003%
76	12.165	3598	3600	3603	rVB	255	118	0.02%	0.003%
77	12.255	3626	3628	3631	rVB	341	130	0.03%	0.003%
78	12.374	3662	3665	3667	rBV	168	116	0.02%	0.003%
79	12.474	3689	3696	3697	rBV	1336	1063	0.21%	0.024%
80	12.548	3716	3719	3722	rBV	133	113	0.02%	0.003%
81	12.567	3722	3725	3728	rBV	137	127	0.02%	0.003%
82	12.606	3734	3737	3740	rBV	181	88	0.02%	0.002%
83	12.644	3746	3749	3754	rVB	216	130	0.03%	0.003%
84	12.712	3768	3770	3774	rBV	171	135	0.03%	0.003%
85	13.078	3881	3884	3886	rBV	185	100	0.02%	0.002%
86	13.213	3924	3926	3933	rBV2	184	178	0.03%	0.004%
87	13.371	3972	3975	3977	rBV	186	94	0.02%	0.002%
88	13.471	4002	4006	4010	rBV2	158	138	0.03%	0.003%
89	13.548	4026	4030	4031	rBV	247	155	0.03%	0.004%
90	13.628	4052	4055	4056	rBV	221	111	0.02%	0.003%
91	13.651	4061	4062	4065	rBV	236	99	0.02%	0.002%
92	13.757	4093	4095	4098	rVB	275	104	0.02%	0.002%
93	13.805	4106	4110	4113	rBV2	300	256	0.05%	0.006%
94	13.863	4126	4128	4130	rBV	269	122	0.02%	0.003%
95	13.924	4145	4147	4150	rVB2	241	116	0.02%	0.003%
96	13.953	4150	4156	4160	rBV	324	393	0.08%	0.009%
97	14.001	4169	4171	4173	rVB	191	91	0.02%	0.002%
98	14.017	4173	4176	4181	rBV2	253	291	0.06%	0.007%
99	14.165	4217	4222	4224	rBV2	292	296	0.06%	0.007%
100	14.522	4330	4333	4337	rBV3	307	246	0.05%	0.006%

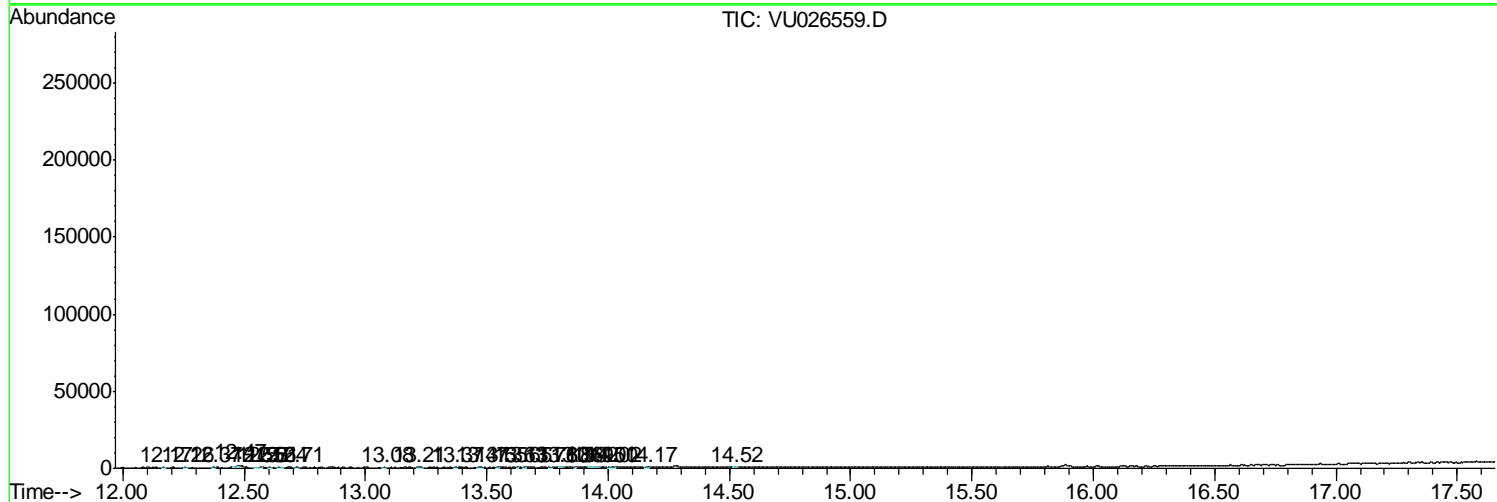
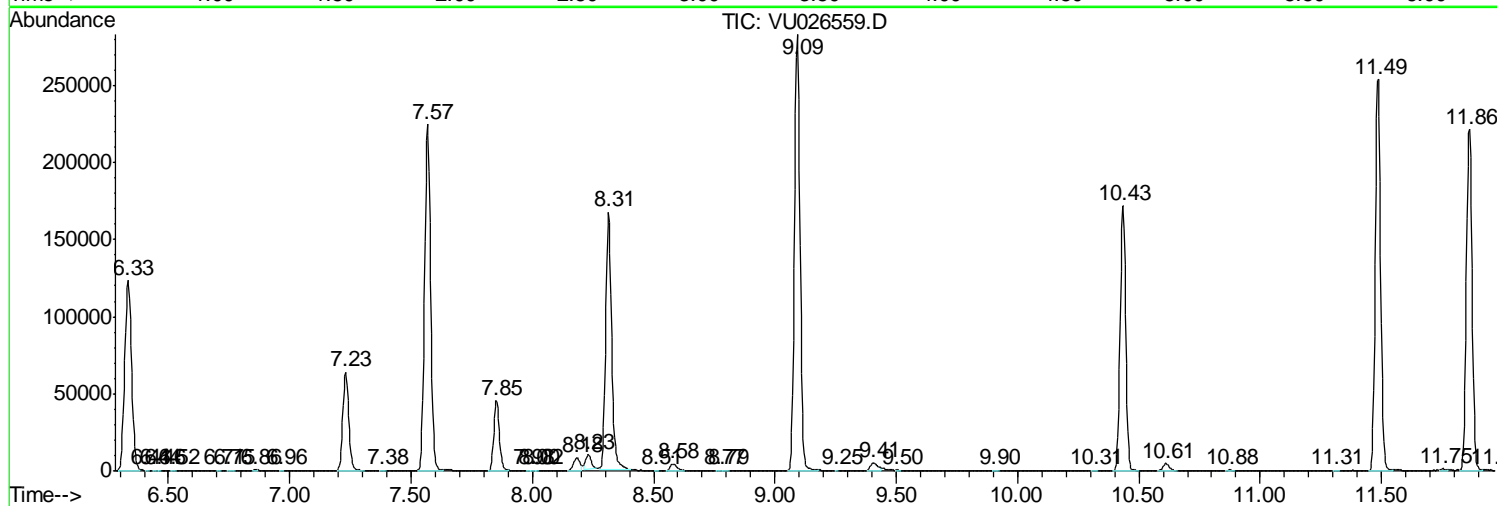
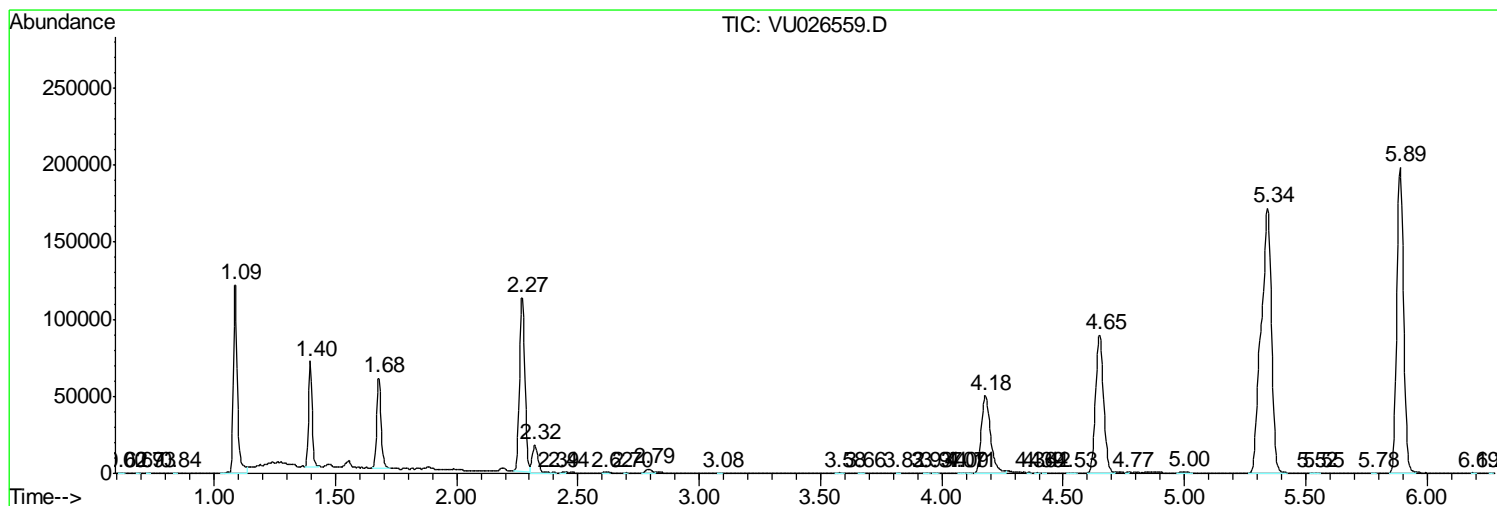
Sum of corrected areas: 4370558

Data Path : Z:\VOASRV\HPCHEM1\MSVOA U\DATA\VU090518\
 Data File : VU026559.D
 Acq On : 05 Sep 2018 22:02
 Operator : MD/SY
 Sample : J4718-04
 Misc : 5.0mL/MSVOA U/WATER
 ALS Vial : 33 Sample Multiplier: 1

Instrument :
 MSVOA_U
ClientSampled :
 BEGC0

Quant Method : Z:\VOASRV\HPCHEM1\MSVOA_U\METHOD\SOMULM082918WMA.M
 Quant Title : VOC Analysis

TIC Library : C:\DATABASE\NIST11.L
 TIC Integration Parameters: LSCINT.P



Data Path : Z:\VOASRV\HPCHEM1\MSVOA_U\DATA\VU090518\
Data File : VU026559.D
Acq On : 05 Sep 2018 22:02
Operator : MD/SY
Sample : J4718-04
Misc : 5.0mL/MSVOA_U/WATER
ALS Vial : 33 Sample Multiplier: 1

Instrument :
MSVOA_U
ClientSampleId :
BEGC0

Quant Method : Z:\VOASRV\HPCHEM1\MSVOA_U\METHOD\SOMULM082918WMA.M
Quant Title : VOC Analysis

TIC Library : C:\DATABASE\NIST11.L
TIC Integration Parameters: LSCINT.P

No Library Search Compounds Detected

Data Path : Z:\VOASRV\HPCHEM1\MSVOA_U\DATA\VU090518\
Data File : VU026559.D
Acq On : 05 Sep 2018 22:02
Operator : MD/SY
Sample : J4718-04
Misc : 5.0mL/MSVOA_U/WATER
ALS Vial : 33 Sample Multiplier: 1

Instrument :
MSVOA_U
ClientSampleId :
BEGC0

Quant Method : Z:\VOASRV\HPCHEM1\MSVOA_U\METHOD\SOMULM082918WMA.M
Quant Title : VOC Analysis

TIC Library : C:\DATABASE\NIST11.L
TIC Integration Parameters: LSCINT.P

TIC Top Hit name	RT	EstConc	Units	Response	--Internal Standard--			
					#	RT	Resp	Conc
