

Data Path : Z:\VOASRV\HPCHEM1\MSVOA U\DATA\VU090519\
 Data File : VU034251.D
 Acq On : 04 Sep 2019 12:38
 Operator : JC/SP
 Sample : K4546-38
 Misc : 5.0mL/MSVOA U/WATER
 ALS Vial : 10 Sample Multiplier: 1

Instrument :
 MSVOA_U
 ClientSampleId :
 T3-S-B3-(2.5)

Quant Time: Sep 05 04:45:15 2019
 Quant Method : Z:\VOASRV\HPCHEM1\MSVOA_U\METHOD\82U082919W.M
 Quant Title : SW846 8260
 QLast Update : Thu Aug 29 04:11:12 2019
 Response via : Initial Calibration

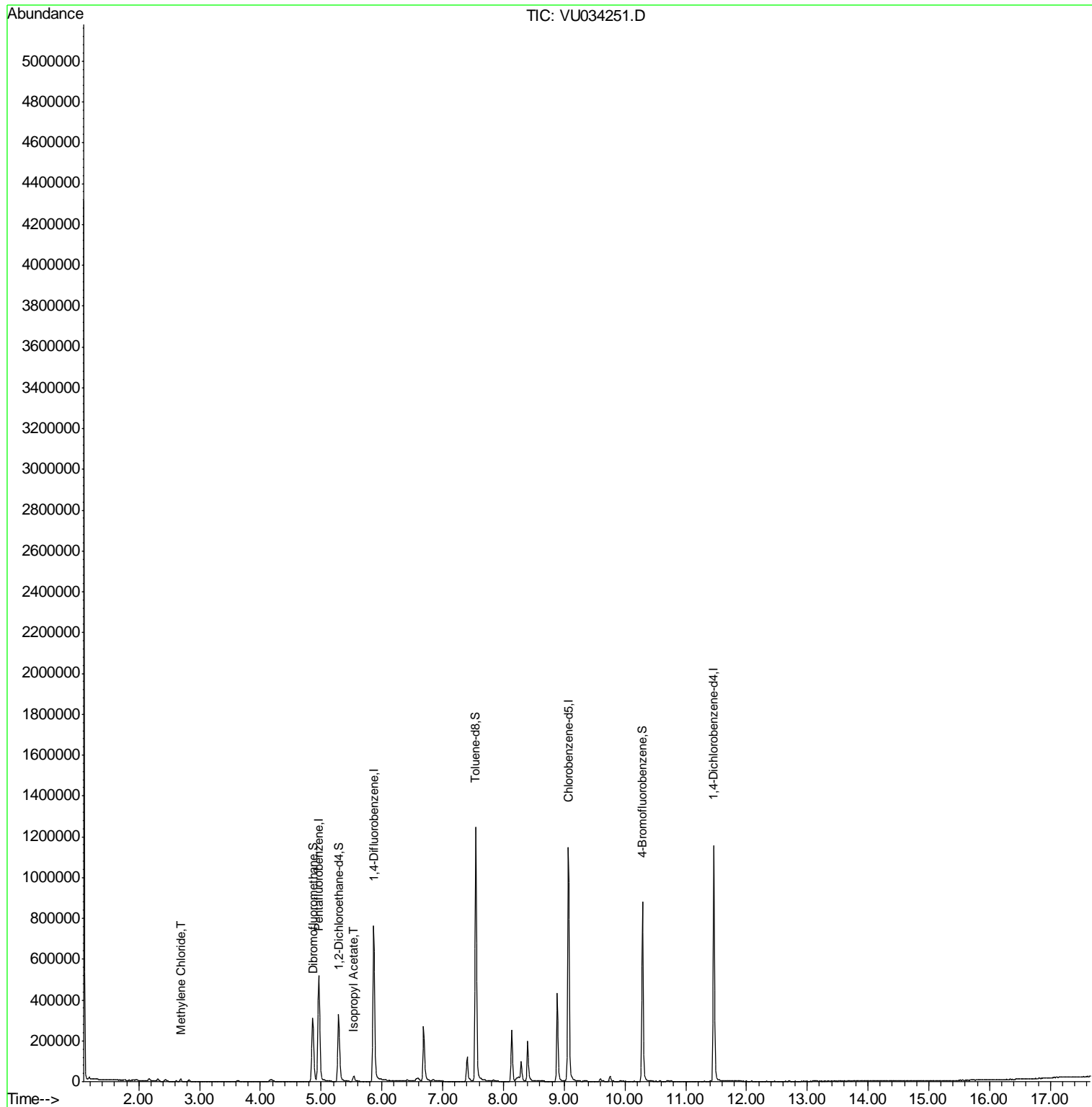
Internal Standards	R.T.	QIon	Response	Conc	Units	Dev(Min)
1) Pentafluorobenzene	4.96	168	425662	50.00	ug/l	0.00
34) 1,4-Difluorobenzene	5.87	114	684828	50.00	ug/l	0.00
63) Chlorobenzene-d5	9.07	117	672801	50.00	ug/l	0.00
72) 1,4-Dichlorobenzene-d4	11.46	152	328805	50.00	ug/l	0.00
System Monitoring Compounds						
33) 1,2-Dichloroethane-d4	5.29	65	261449	47.94	ug/l	0.00
Spiked Amount	50.000		Recovery	=	95.88%	
35) Dibromofluoromethane	4.86	113	220946	46.52	ug/l	0.00
Spiked Amount	50.000		Recovery	=	93.04%	
50) Toluene-d8	7.55	98	883988	49.70	ug/l	0.00
Spiked Amount	50.000		Recovery	=	99.40%	
62) 4-Bromofluorobenzene	10.29	95	305133	44.10	ug/l	0.00
Spiked Amount	50.000		Recovery	=	88.20%	
Target Compounds						
20) Methylene Chloride	2.69	84	5586	1.060	ug/l	96
43) Isopropyl Acetate	5.54	43	33789	3.062	ug/l	99

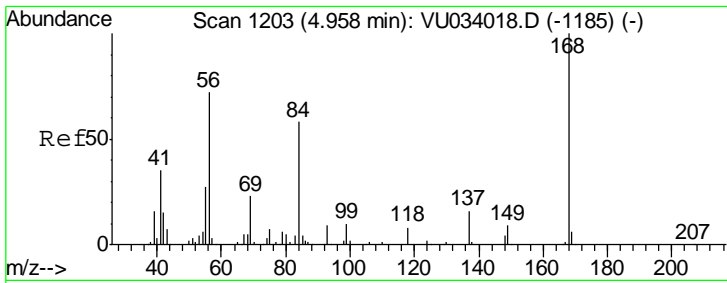
(#) = qualifier out of range (m) = manual integration (+) = signals summed

Data Path : Z:\VOASRV\HPCHEM1\MSVOA U\DATA\VU090519\
 Data File : VU034251.D
 Acq On : 04 Sep 2019 12:38
 Operator : JC/SP
 Sample : K4546-38
 Misc : 5.0mL/MSVOA U/WATER
 ALS Vial : 10 Sample Multiplier: 1

Instrument :
 MSVOA_U
 ClientSampleId :
 T3-S-B3-(2.5)

Quant Time: Sep 05 04:45:15 2019
 Quant Method : Z:\VOASRV\HPCHEM1\MSVOA_U\METHOD\82U082919W.M
 Quant Title : SW846 8260
 QLast Update : Thu Aug 29 04:11:12 2019
 Response via : Initial Calibration

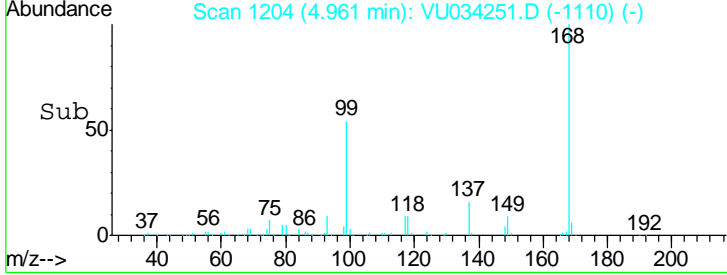
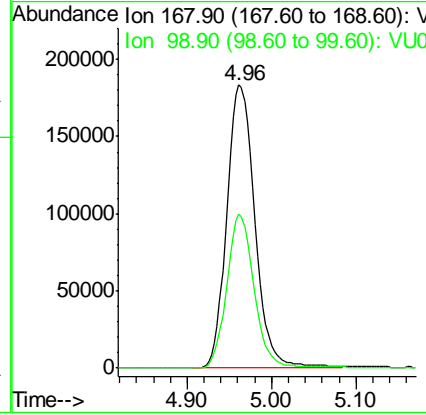
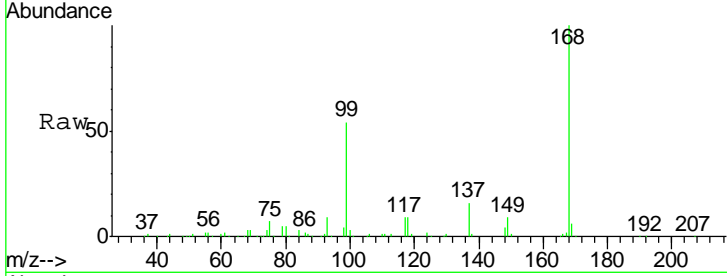




#1
 Pentafluorobenzene
 Concen: 50.000 ug/l
 RT: 4.96 min Scan# 1204
 Delta R.T. 0.00 min
 Lab File: VU034251.D
 Acq: 04 Sep 2019 12:38

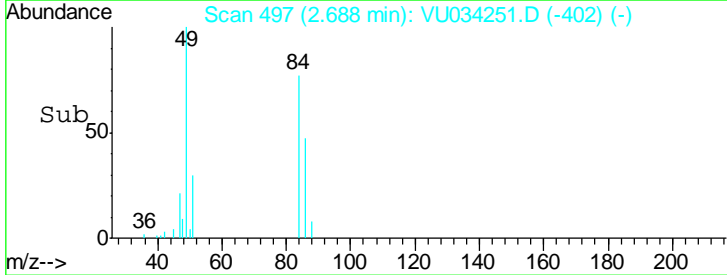
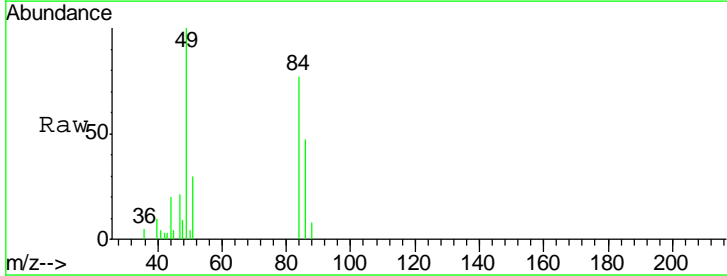
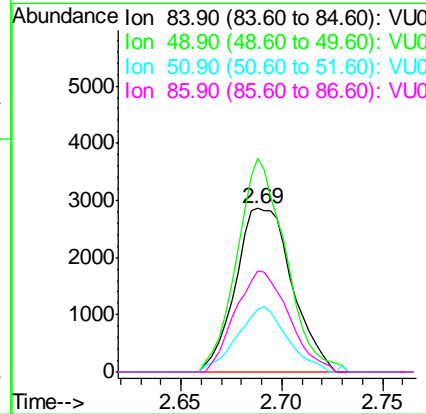
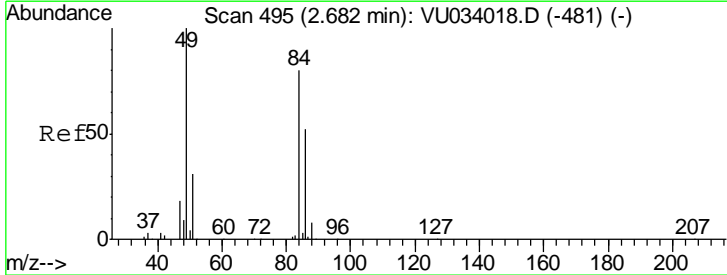
Instrument : MSVOA_U
 ClientSampled : T3-S-B3-(2.5)

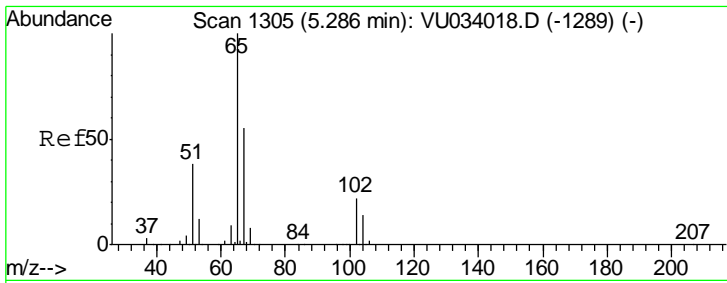
Tgt Ion	Resp	Lower	Upper
168	100		
99	54.3	42.3	63.5



#20
 Methylene Chloride
 Concen: 1.060 ug/l
 RT: 2.69 min Scan# 497
 Delta R.T. 0.01 min
 Lab File: VU034251.D
 Acq: 04 Sep 2019 12:38

Tgt Ion	Resp	Lower	Upper
84	100		
49	130.7	100.2	150.4
51	38.6	30.8	46.2
86	61.6	52.5	78.7

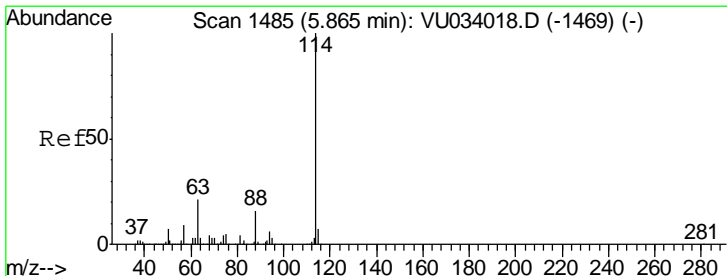
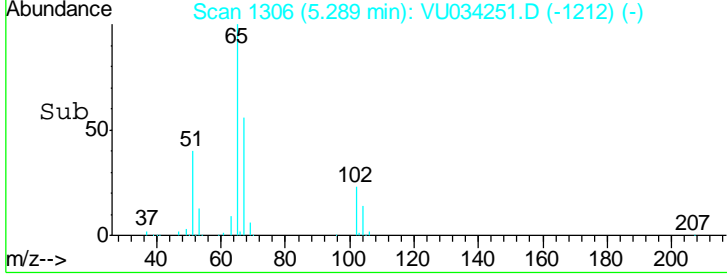
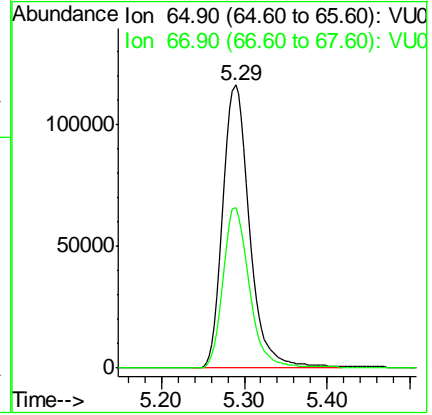
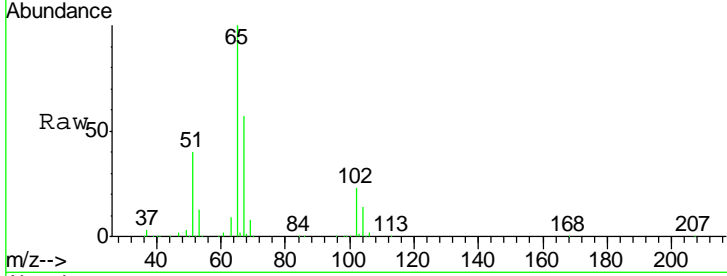




#33
 1,2-Dichloroethane-d4
 Concen: 47.936 ug/l
 RT: 5.29 min Scan# 1306
 Delta R.T. 0.00 min
 Lab File: VU034251.D
 Acq: 04 Sep 2019 12:38

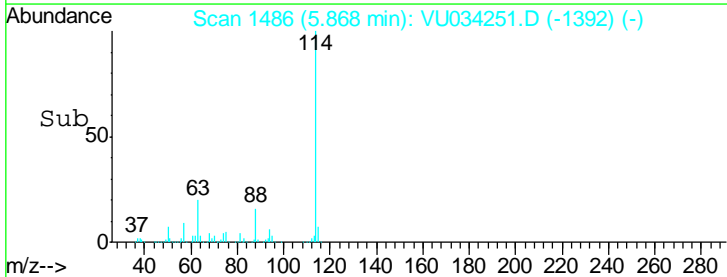
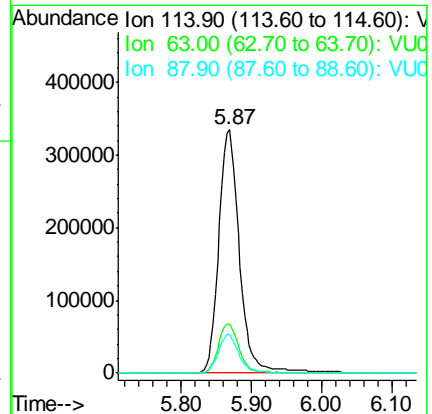
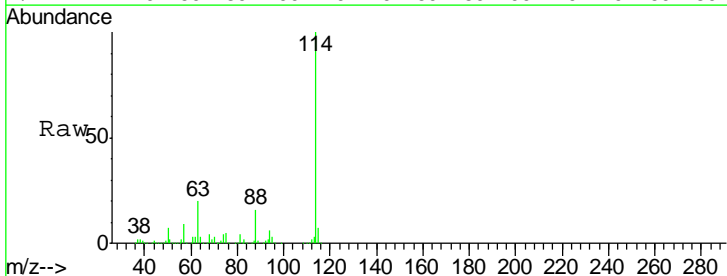
Instrument :
 MSVOA_U
ClientSampled :
 T3-S-B3-(2.5)

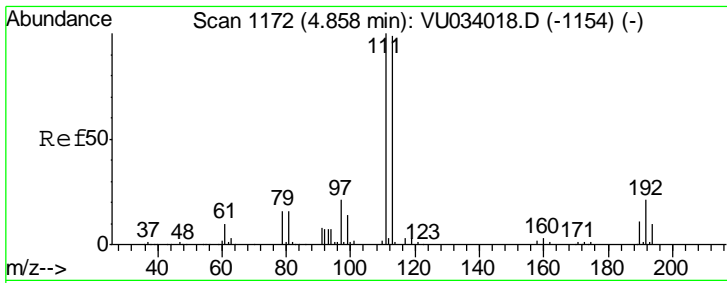
Tgt Ion	Resp	Lower	Upper
65	100		
67	55.4	0.0	110.6



#34
 1,4-Difluorobenzene
 Concen: 50.000 ug/l
 RT: 5.87 min Scan# 1486
 Delta R.T. 0.00 min
 Lab File: VU034251.D
 Acq: 04 Sep 2019 12:38

Tgt Ion	Resp	Lower	Upper
114	100		
63	20.0	0.0	42.0
88	15.8	0.0	32.0

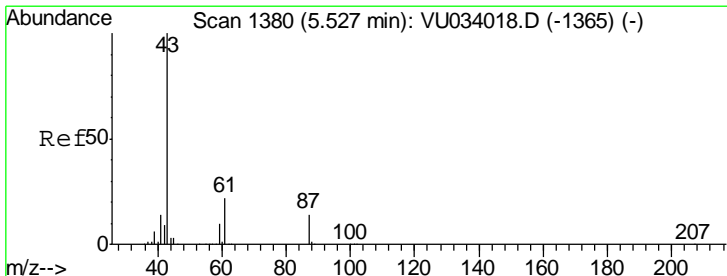
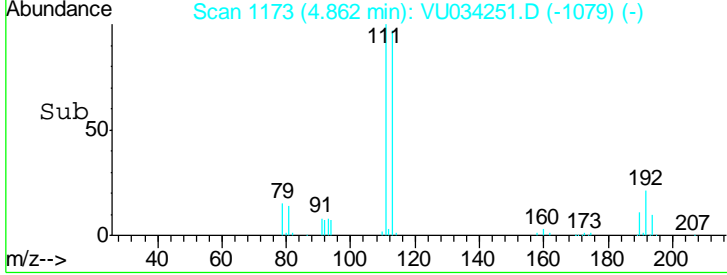
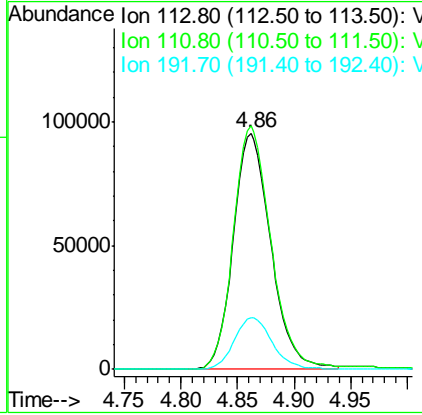
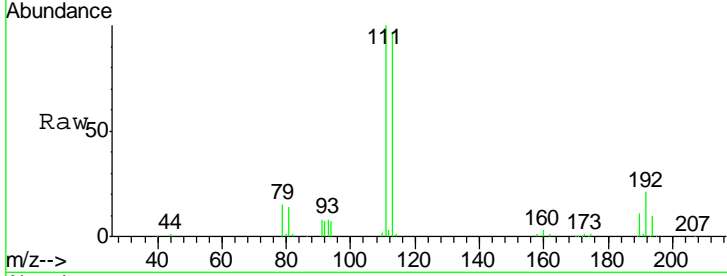




#35
 Dibromofluoromethane
 Concen: 46.516 ug/l
 RT: 4.86 min Scan# 1173
 Delta R.T. 0.00 min
 Lab File: VU034251.D
 Acq: 04 Sep 2019 12:38

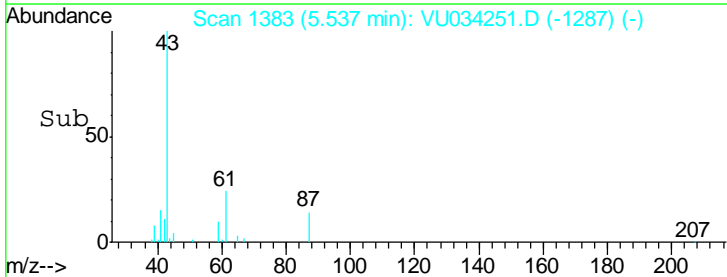
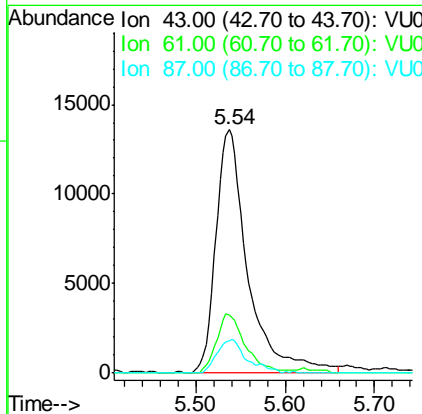
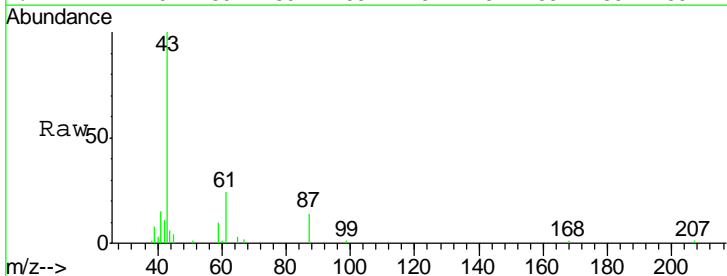
Instrument : MSVOA_U
 ClientSampled : T3-S-B3-(2.5)

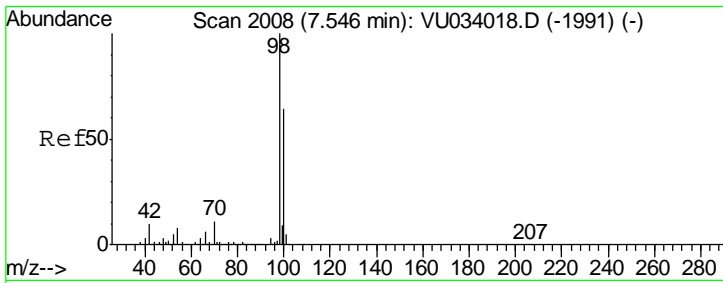
Tgt Ion	Resp	Lower	Upper
113	100		
111	102.8	81.7	122.5
192	22.3	17.1	25.7



#43
 Isopropyl Acetate
 Concen: 3.062 ug/l
 RT: 5.54 min Scan# 1383
 Delta R.T. 0.01 min
 Lab File: VU034251.D
 Acq: 04 Sep 2019 12:38

Tgt Ion	Resp	Lower	Upper
43	100		
61	21.8	17.2	25.8
87	12.8	10.8	16.2

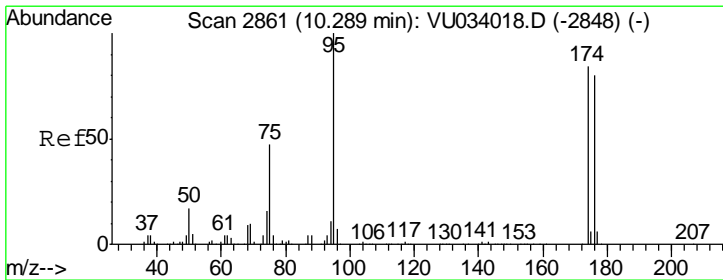
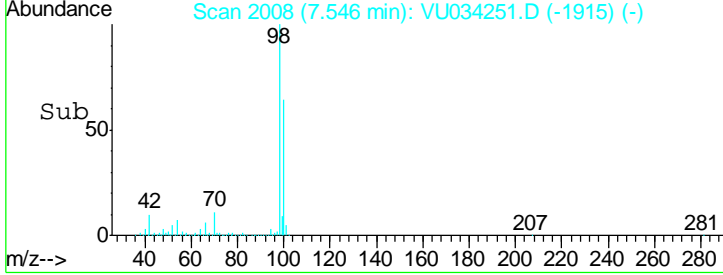
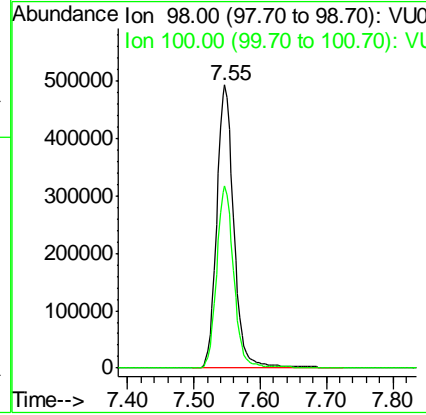
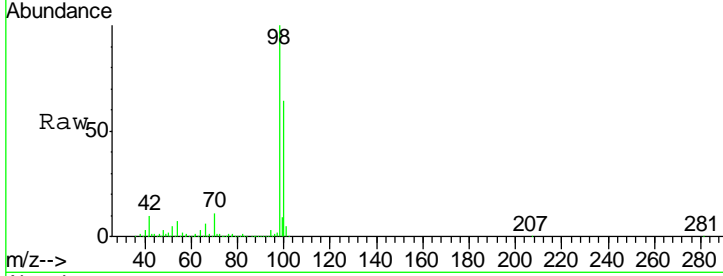




#50
 Toluene-d8
 Concen: 49.703 ug/l
 RT: 7.55 min Scan# 2008
 Delta R.T. 0.00 min
 Lab File: VU034251.D
 Acq: 04 Sep 2019 12:38

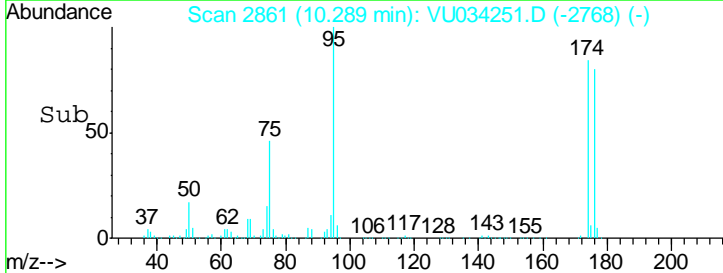
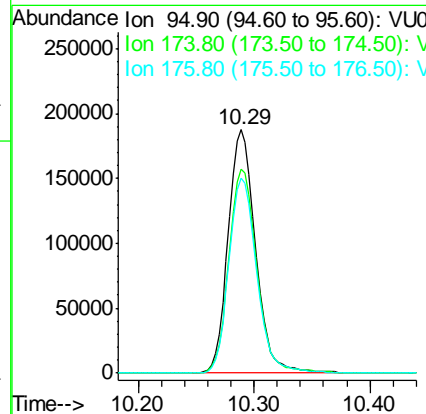
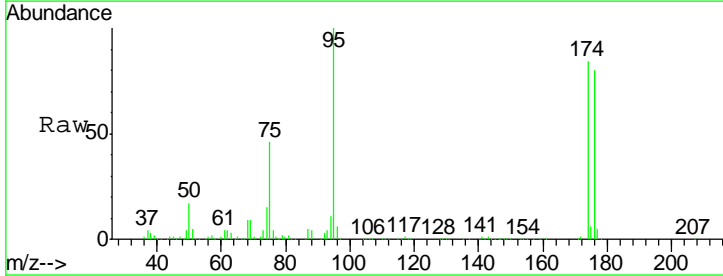
Instrument :
 MSVOA_U
ClientSampled :
 T3-S-B3-(2.5)

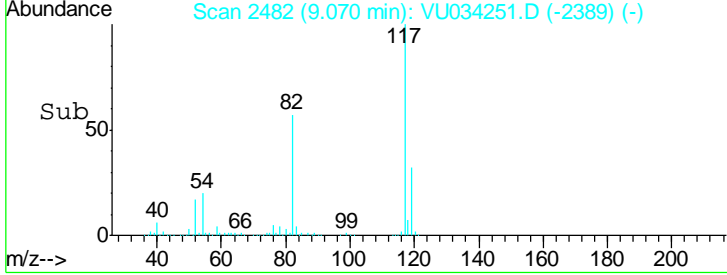
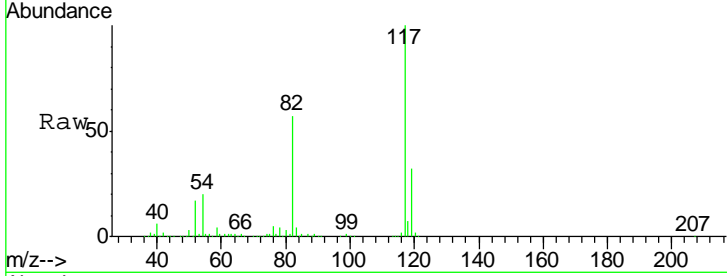
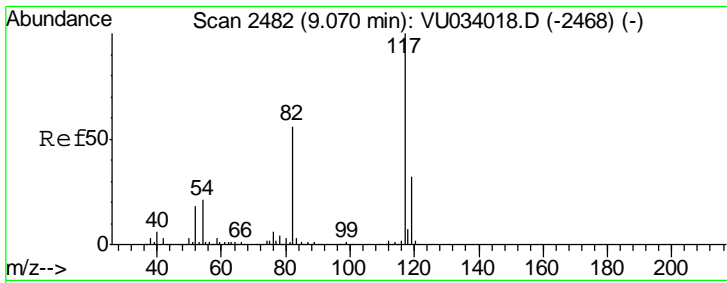
Tgt Ion	Resp	Lower	Upper
98	883988		
100	64.2	50.3	75.5



#62
 4-Bromofluorobenzene
 Concen: 44.105 ug/l
 RT: 10.29 min Scan# 2861
 Delta R.T. 0.00 min
 Lab File: VU034251.D
 Acq: 04 Sep 2019 12:38

Tgt Ion	Resp	Lower	Upper
95	305133		
174	85.7	0.0	168.8
176	81.7	0.0	161.8

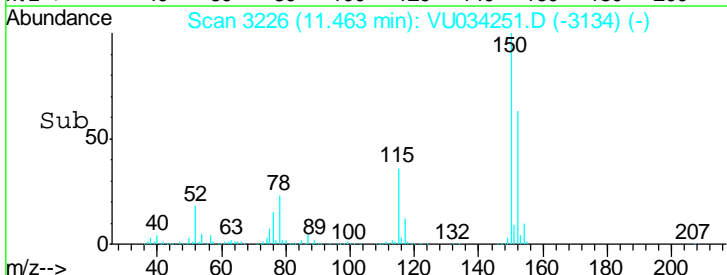
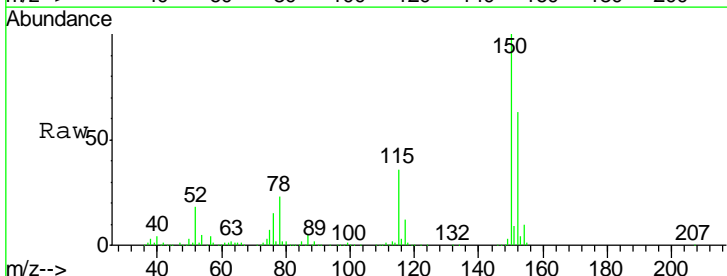
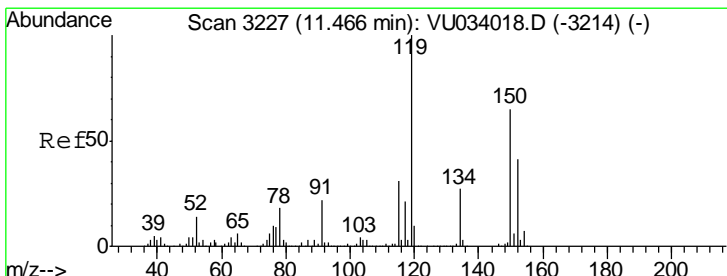
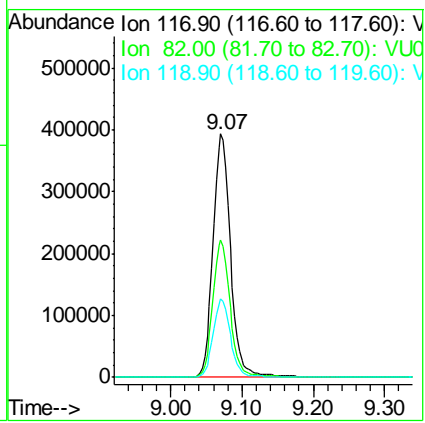




#63
 Chlorobenzene-d5
 Concen: 50.000 ug/l
 RT: 9.07 min Scan# 2482
 Delta R.T. 0.00 min
 Lab File: VU034251.D
 Acq: 04 Sep 2019 12:38

Instrument : MSVOA_U
 ClientSampled : T3-S-B3-(2.5)

Tgt Ion	Resp	Lower	Upper
117	672801		
82	56.7	45.1	67.7
119	32.2	25.4	38.0



#72
 1,4-Dichlorobenzene-d4
 Concen: 50.000 ug/l
 RT: 11.46 min Scan# 3226
 Delta R.T. -0.00 min
 Lab File: VU034251.D
 Acq: 04 Sep 2019 12:38

Tgt Ion	Resp	Lower	Upper
152	328805		
115	56.6	41.1	123.3
150	156.6	0.0	348.8

