

Data Path : Z:\voasrv\HPCHEM1\MSVOA_U\Data\VU090523\
 Data File : VU055089.D
 Acq On : 05 Sep 2023 13:12
 Operator : MD/SY
 Sample : 04250-04DL 400X
 Misc : 25.0mL/MSVOA_U/WATER
 ALS Vial : 9 Sample Multiplier: 1

Instrument :
 MSVOA_U
 ClientSampleId :
 BH4A3DL

Integration Parameters: rteint.p

Integrator: RTE

Smoothing : ON

Sampling : 1

Start Thrs : 0.1

Stop Thrs : 0

Filtering: 5

Min Area: 3 % of largest Peak

Max Peaks: 100

Peak Location: TOP

If leading or trailing edge < 100 prefer < Baseline drop else tangent >

Peak separation: 5

Method : Z:\voasrv\HPCHEM1\MSVOA_U\Method\SFAMUTR090123WMA.M

Title : TRACE VOA SFAM1.0

Signal : TIC: VU055089.D\data.ms

peak #	R.T. min	first scan	max scan	last scan	PK TY	peak height	corr. area	corr. % max.	% of total
1	1.592	87	94	106	rBV	50855	58380	9.18%	0.984%
2	1.907	184	192	207	rVB	64313	85041	13.38%	1.433%
3	2.560	382	395	412	rBV	120151	197554	31.08%	3.329%
4	3.042	532	545	555	rBV3	15706	29243	4.60%	0.493%
5	3.181	574	588	603	rVB	19033	45380	7.14%	0.765%
6	4.628	1016	1038	1067	rBV2	119828	371153	58.39%	6.254%
7	5.062	1157	1173	1193	rBV	118079	265694	41.80%	4.477%
8	5.724	1358	1379	1398	rBV2	237468	609355	95.86%	10.267%
9	6.248	1528	1542	1559	rBV	237063	458366	72.10%	7.723%
10	6.541	1620	1633	1651	rBV2	195404	382407	60.16%	6.443%
11	6.689	1666	1679	1699	rBV	150928	293741	46.21%	4.949%
12	7.566	1939	1952	1974	rBV	56081	108505	17.07%	1.828%
13	7.898	2042	2055	2075	rBV	282617	505443	79.51%	8.517%
14	8.181	2133	2143	2157	rBV2	30444	53615	8.43%	0.903%
15	8.634	2273	2284	2322	rBV3	256221	595754	93.72%	10.038%
16	9.415	2514	2527	2554	rBV	346186	609797	95.93%	10.275%
17	10.753	2931	2943	2961	rBV	106033	176071	27.70%	2.967%
18	11.811	3261	3272	3290	rBV	387880	635697	100.00%	10.711%
19	12.193	3378	3391	3411	rBV	272630	453599	71.35%	7.643%

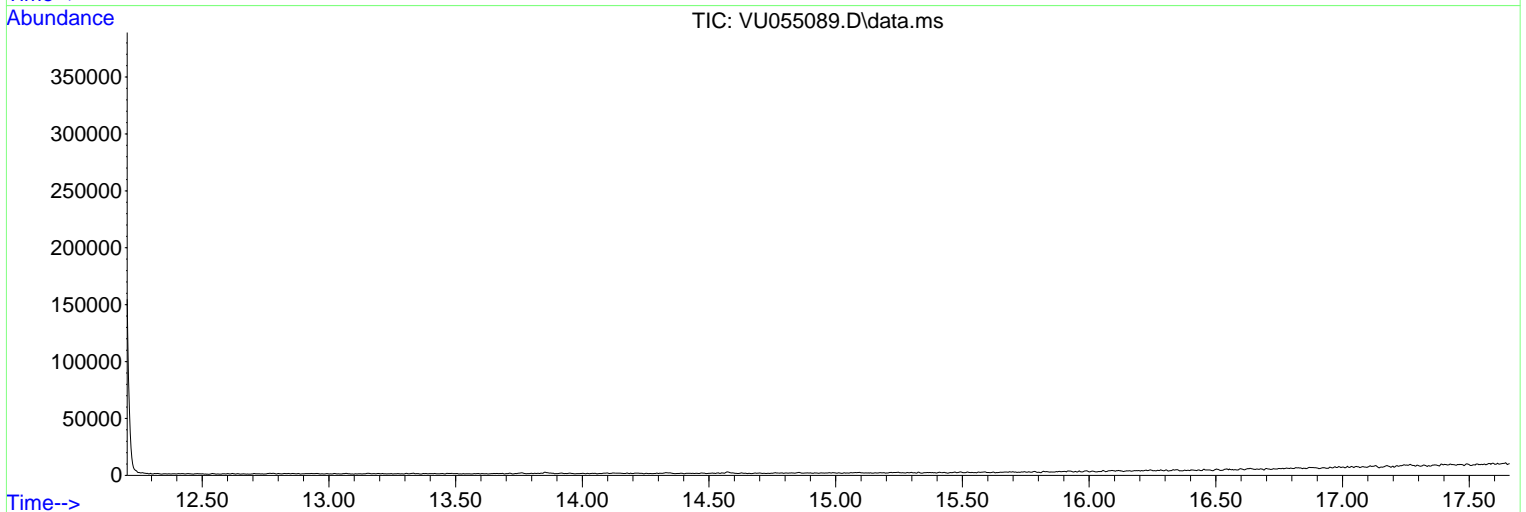
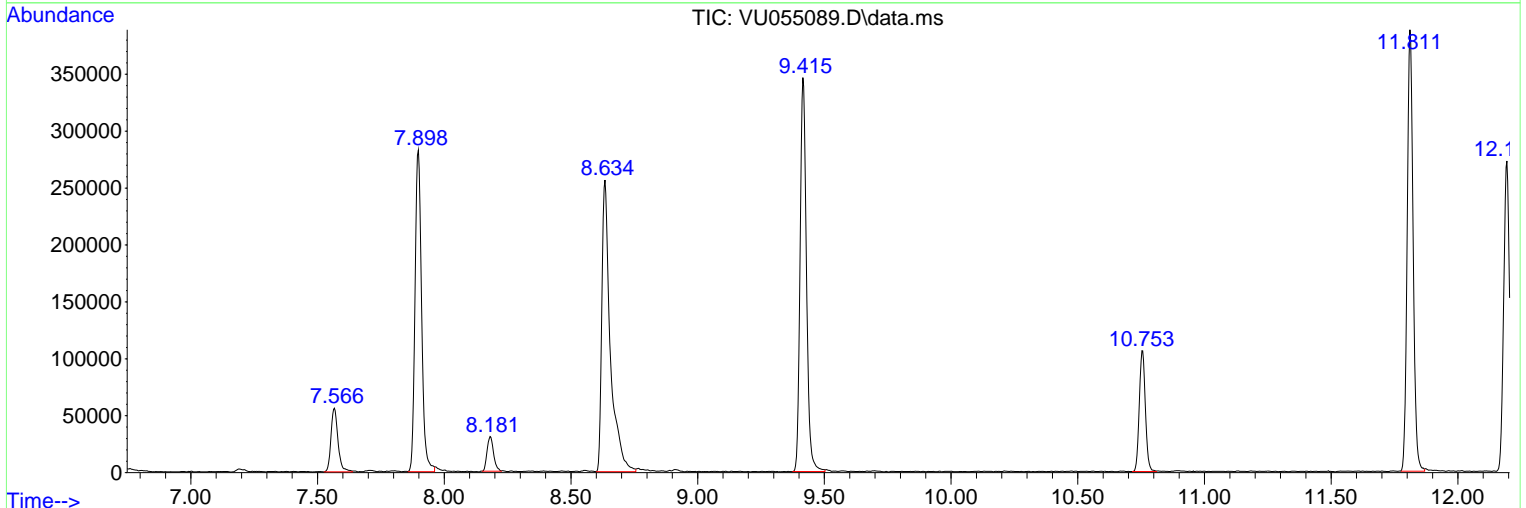
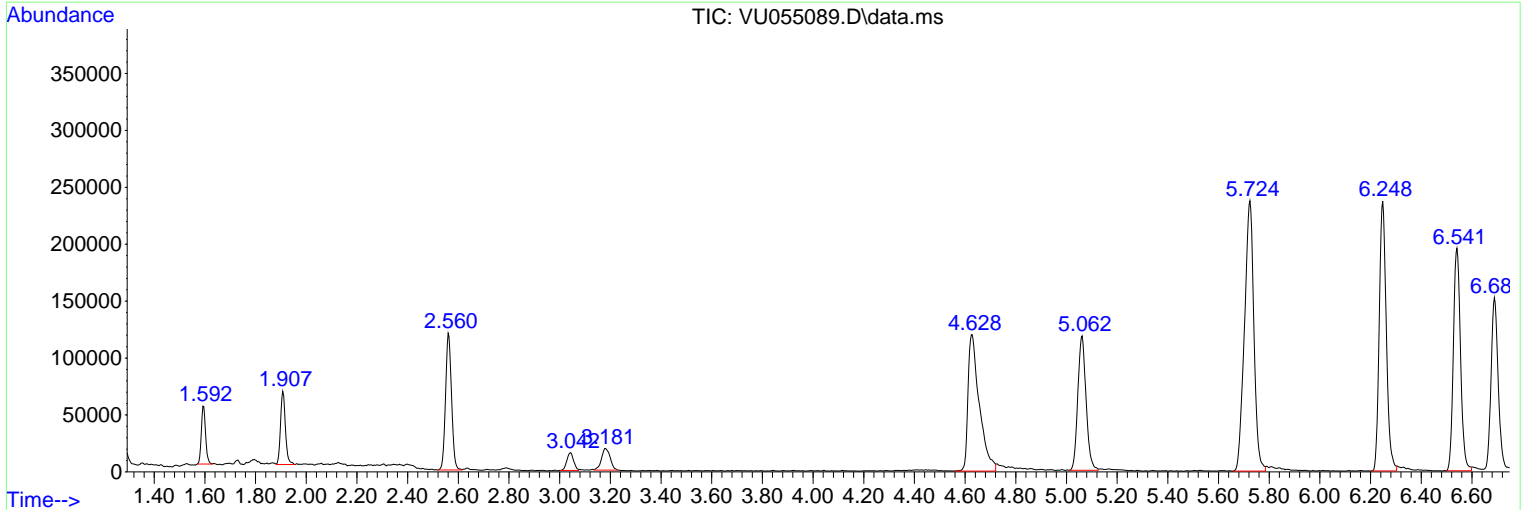
Sum of corrected areas: 5934795

Data Path : Z:\voasrv\HPCHEM1\MSVOA_U\Data\VU090523\
 Data File : VU055089.D
 Acq On : 05 Sep 2023 13:12
 Operator : MD/SY
 Sample : 04250-04DL 400X
 Misc : 25.0mL/MSVOA_U/WATER
 ALS Vial : 9 Sample Multiplier: 1

Instrument :
 MSVOA_U
 ClientSampleId :
 BH4A3DL

Quant Method : Z:\voasrv\HPCHEM1\MSVOA_U\Method\SFAMUTR090123WMA.M
 Quant Title : TRACE VOA SFAM1.0

TIC Library :
 TIC Integration Parameters: rteint.p



Library Search Compound Report

Data Path : Z:\voasrv\HPCHEM1\MSVOA_U\Data\VU090523\
Data File : VU055089.D
Acq On : 05 Sep 2023 13:12
Operator : MD/SY
Sample : 04250-04DL 400X
Misc : 25.0mL/MSVOA_U/WATER
ALS Vial : 9 Sample Multiplier: 1

Instrument :
MSVOA_U
ClientSampleId :
BH4A3DL

Quant Method : Z:\voasrv\HPCHEM1\MSVOA_U\Method\SFAMUTR090123WMA.M
Quant Title : TRACE VOA SFAM1.0

TIC Library :
TIC Integration Parameters: rteint.p

No Library Search Compounds Detected

Data Path : Z:\voasrv\HPCHEM1\MSVOA_U\Data\VU090523\
Data File : VU055089.D
Acq On : 05 Sep 2023 13:12
Operator : MD/SY
Sample : 04250-04DL 400X
Misc : 25.0mL/MSVOA_U/WATER
ALS Vial : 9 Sample Multiplier: 1

Instrument :
MSVOA_U
ClientSampleId :
BH4A3DL

Quant Method : Z:\voasrv\HPCHEM1\MSVOA_U\Method\SFAMUTR090123WMA.M
Quant Title : TRACE VOA SFAM1.0

TIC Library :
TIC Integration Parameters: rteint.p

TIC Top Hit name	RT	EstConc	Units	Response	--Internal Standard--			
					#	RT	Resp	Conc
