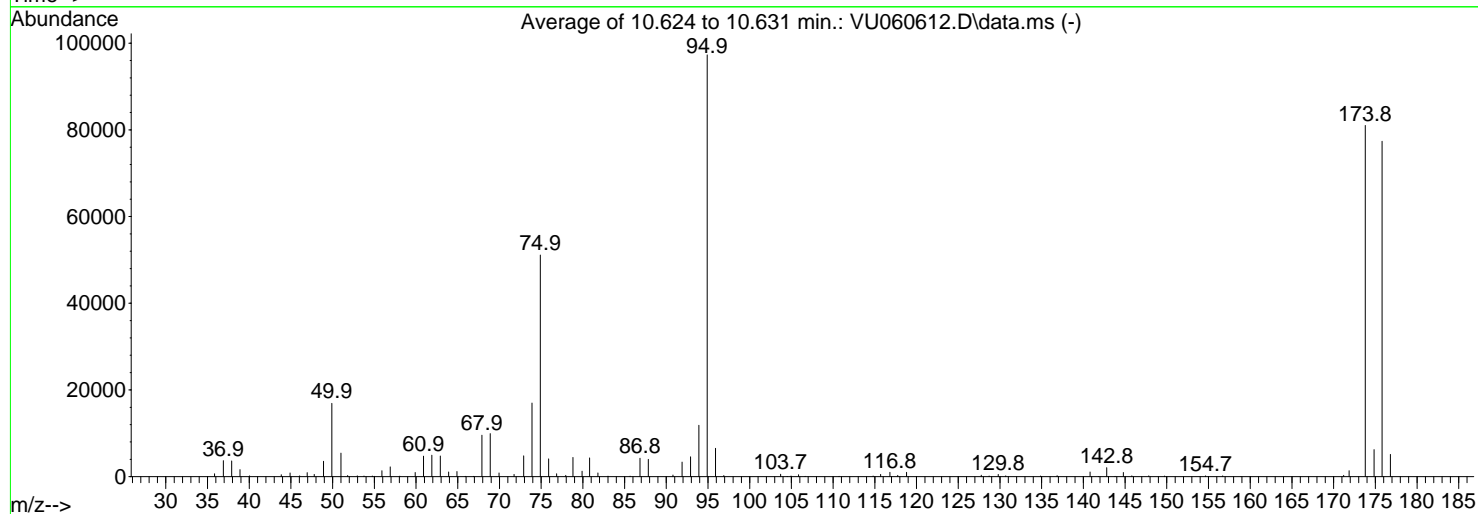
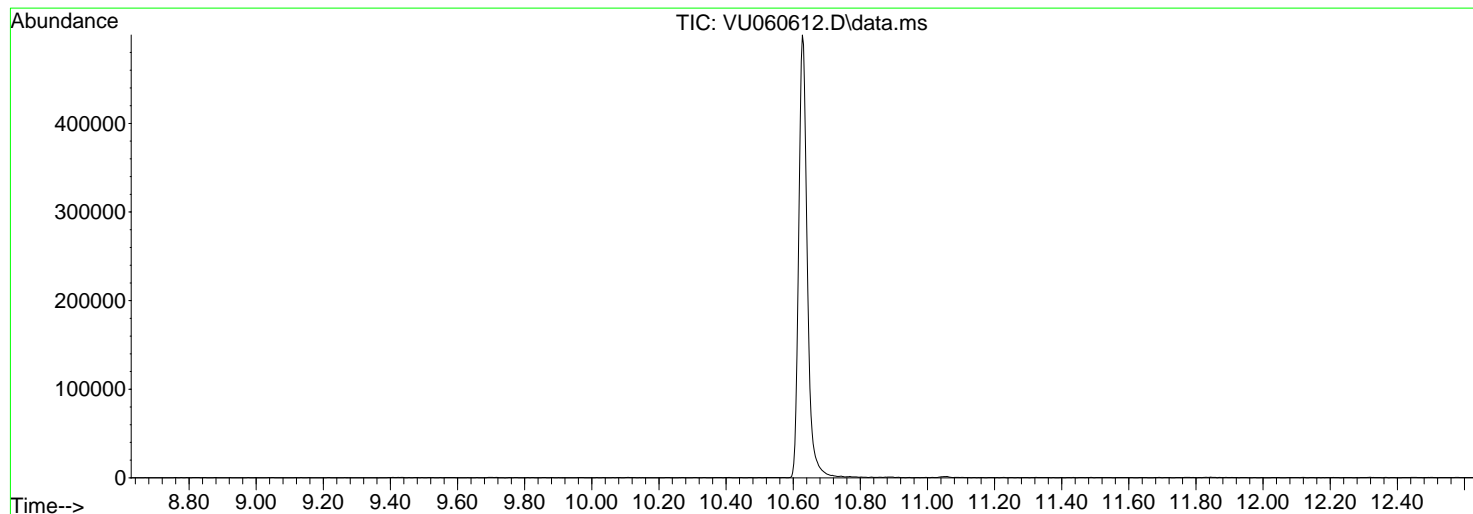


Data Path : Z:\voasrv\HPCHEM1\MSVOA\_U\Data\VU090524\  
 Data File : VU060612.D  
 Acq On : 05 Sep 2024 09:20  
 Operator : MD/SY  
 Sample : BFB194  
 Misc : 25.0mL/MSVOA\_U/WATER  
 ALS Vial : 1 Sample Multiplier: 1

Instrument :  
 MSVOA\_U  
 ClientSampleId :  
 BFB194

Integration File: rteint.p

Method : Z:\voasrv\HPCHEM1\MSVOA\_U\Method\SFAMUTR082324WMA.M  
 Title : TRACE VOA SFAM1.0  
 Last Update : Fri Sep 06 02:03:06 2024



AutoFind: Scans 2903, 2904, 2905; Background Corrected with Scan 2888

Target Mass	Rel. to Mass	Lower Limit%	Upper Limit%	Rel. Abn%	Raw Abn	Result Pass/Fail
50	95	15	40	17.4	16921	PASS
75	95	30	80	52.5	51120	PASS
95	95	100	100	100.0	97304	PASS
96	95	5	9	6.7	6518	PASS
173	174	0.00	2	0.0	0	PASS
174	95	50	120	83.3	81016	PASS
175	174	5	9	7.7	6227	PASS
176	174	95	101	95.5	77365	PASS
177	176	5	9	6.6	5142	PASS

m/z	Abundance
43.80	339.0

**Instrument :**  
MSVOA\_U  
**ClientSampleId :**  
BFB194

m/z	Abundance
35.90	643.0
36.90	3524.0
37.90	3648.0
38.90	1676.0
40.00	138.0
43.90	822.0
44.90	814.0
46.00	178.0
46.90	1036.0
47.90	486.0
48.90	3318.0
49.90	16242.0
51.00	5156.0
51.80	339.0
53.00	201.0
53.80	154.0
54.70	219.0
55.90	1434.0
56.90	2368.0
58.00	100.0
59.90	959.0
60.90	4523.0
61.90	4846.0
62.90	4746.0
63.90	1098.0
64.90	1134.0
66.90	207.0
67.90	9334.0
68.90	10101.0
70.00	793.0
71.70	478.0
72.90	4513.0
73.90	15805.0
74.90	50024.0
75.90	4028.0
76.80	716.0
77.90	437.0
78.80	4293.0
79.90	1227.0
80.80	4106.0
81.80	816.0
85.60	116.0
86.90	4008.0
87.80	3786.0
90.80	383.0
91.90	3388.0
92.90	4237.0
93.90	11590.0
94.90	95072.0
95.90	6549.0
96.90	282.0
103.70	568.0
104.90	135.0
105.90	491.0
106.70	132.0
114.80	137.0
115.70	537.0
116.80	1082.0
117.70	300.0
118.80	904.0
127.70	324.0
128.70	157.0
129.80	497.0
130.70	166.0
134.90	121.0
137.00	205.0
140.80	931.0
141.80	161.0
142.80	2104.0
144.80	986.0
145.80	148.0
147.90	212.0
149.70	130.0
154.60	226.0
156.70	194.0
171.90	1320.0
173.80	77360.0
174.80	6026.0
175.80	73528.0
176.80	4920.0

Instrument :  
MSVOA\_U  
ClientSampleId :  
BFB194

m/z	Abundance
35.90	671.0
36.90	3773.0
37.90	3671.0
38.90	1625.0
40.10	173.0
43.90	796.0
44.90	909.0
46.10	179.0
46.90	934.0
47.80	496.0
48.90	3566.0
49.90	17328.0
51.00	5598.0
51.80	268.0
53.00	164.0
53.70	131.0
54.80	188.0
55.90	1405.0
56.90	2257.0
58.00	108.0
59.90	1006.0
60.90	4752.0
61.90	5062.0
62.90	5003.0
63.90	1094.0
64.90	1226.0
65.90	120.0
67.90	9711.0
68.90	10117.0
70.00	892.0
71.80	537.0
72.90	4989.0
73.90	17616.0
74.90	52744.0
75.90	4159.0
76.90	717.0
78.00	463.0
78.80	4537.0
79.90	1323.0
80.80	4351.0
81.80	876.0
83.00	144.0
85.60	109.0
86.80	4352.0
87.90	4072.0
90.80	399.0
91.90	3515.0
92.90	4648.0
93.90	12246.0
94.90	99848.0
95.90	6656.0
96.90	309.0
103.70	591.0
104.90	133.0
105.80	457.0
106.60	121.0
110.70	134.0
114.80	158.0
115.70	545.0
116.80	1005.0
117.70	319.0
118.80	1042.0
127.80	367.0
128.70	162.0
129.80	542.0
130.70	214.0
134.80	138.0
136.80	228.0
140.80	1072.0
142.80	2123.0
143.80	126.0
144.80	970.0
145.80	187.0
147.90	201.0
149.80	144.0
154.60	199.0
156.70	205.0
171.20	435.0
171.80	1426.0
173.80	83432.0
174.90	6460.0
175.80	79528.0
176.80	5218.0

**Instrument :**  
MSVOA\_U  
**ClientSampleId :**  
BFB194

m/z	Abundance
35.80	725.0
36.90	3803.0
37.90	3488.0
38.90	1609.0
40.10	205.0
43.90	698.0
44.90	859.0
46.00	147.0
47.00	816.0
47.70	528.0
48.90	3719.0
49.90	17192.0
51.00	5584.0
51.80	186.0
52.90	160.0
53.70	140.0
55.00	191.0
55.90	1271.0
56.90	2109.0
58.10	126.0
59.90	917.0
60.90	4867.0
61.90	4891.0
62.90	4553.0
63.90	1038.0
64.90	1153.0
65.90	117.0
67.90	9639.0
68.90	9623.0
69.90	874.0
71.80	564.0
72.90	4922.0
73.90	17496.0
74.90	50592.0
75.90	4123.0
76.90	581.0
78.80	4494.0
79.90	1249.0
80.80	4460.0
81.80	881.0
83.00	194.0
85.70	140.0
86.80	4408.0
87.90	4094.0
90.80	378.0
91.90	3232.0
92.90	4828.0
93.90	11755.0
94.90	96992.0
95.90	6349.0
96.90	239.0
103.70	536.0
104.50	100.0
105.00	148.0
105.80	434.0
110.70	135.0
114.80	158.0
115.70	433.0
116.80	910.0
117.80	326.0
118.80	1008.0
127.70	353.0
128.70	150.0
129.80	474.0
130.70	213.0
134.80	164.0
136.80	218.0
140.80	1175.0
142.80	1996.0
143.80	129.0
144.80	883.0
145.80	218.0
147.80	182.0
149.80	133.0
154.70	186.0
156.70	173.0
158.90	129.0
171.20	423.0
171.90	1383.0
173.80	82256.0
174.90	6195.0
175.80	79040.0
176.80	5287.0

**Instrument :**  
MSVOA\_U  
**ClientSampleId :**  
BFB194