

Data Path : Z:\VOASRV\HPCHEM1\MSVOA\_U\DATA\VU090618\  
 Data File : VU026579.D  
 Acq On : 06 Sep 2018 14:47  
 Operator : MD/SY  
 Sample : J4718-18  
 Misc : 5.0mL/MSVOA\_U/WATER  
 ALS Vial : 8 Sample Multiplier: 1

Instrument :  
 MSVOA\_U  
 ClientSampleID :  
 BEGD4

Quant Time: Sep 07 04:45:39 2018  
 Quant Method : Z:\VOASRV\HPCHEM1\MSVOA\_U\METHOD\SOMULM082918WMA.M  
 Quant Title : VOC Analysis  
 QLast Update : Fri Sep 07 04:44:56 2018  
 Response via : Initial Calibration

Internal Standards	R.T.	QIon	Response	Conc	Units	Dev(Min)
1) 1,4-Difluorobenzene	5.89	114	171274	50.00	ug/L	0.00
28) Chlorobenzene-d5	9.09	117	159187	50.00	ug/L	0.00
60) 1,4-Dichlorobenzene-d4	11.49	152	65599	50.00	ug/L	0.00

## System Monitoring Compounds

4) Vinyl Chloride-d3	1.40	65	65854	62.06	ug/L	0.00
Spiked Amount	50.000	Range	60 - 135	Recovery	=	124.12%
7) Chloroethane-d5	1.68	69	56544	59.00	ug/L	0.00
Spiked Amount	50.000	Range	70 - 130	Recovery	=	118.00%
11) 1,1-Dichloroethene-d2	2.27	63	91811	38.42	ug/L	0.00
Spiked Amount	50.000	Range	60 - 125	Recovery	=	76.84%
21) 2-Butanone-d5	4.18	46	101176	122.84	ug/L	0.00
Spiked Amount	100.000	Range	40 - 130	Recovery	=	122.84%
24) Chloroform-d	4.65	84	110160	54.96	ug/L	0.00
Spiked Amount	50.000	Range	70 - 125	Recovery	=	109.92%
26) 1,2-Dichloroethane-d4	5.31	65	74346	55.72	ug/L	0.00
Spiked Amount	50.000	Range	70 - 125	Recovery	=	111.44%
32) Benzene-d6	5.34	84	223011	60.78	ug/L	0.00
Spiked Amount	50.000	Range	70 - 125	Recovery	=	121.56%
36) 1,2-Dichloropropane-d6	6.33	67	77212	61.26	ug/L	0.00
Spiked Amount	50.000	Range	70 - 120	Recovery	=	122.52%#
41) Toluene-d8	7.57	98	198144	55.94	ug/L	0.00
Spiked Amount	50.000	Range	80 - 120	Recovery	=	111.88%
43) trans-1,3-Dichloropropene-	7.85	79	32663	56.75	ug/L	0.00
Spiked Amount	50.000	Range	60 - 125	Recovery	=	113.50%
47) 2-Hexanone-d5	8.31	63	71884	124.35	ug/L	0.00
Spiked Amount	100.000	Range	45 - 130	Recovery	=	124.35%
57) 1,1,2,2-Tetrachloroethane-	10.43	84	102469	55.18	ug/L	0.00
Spiked Amount	50.000	Range	65 - 120	Recovery	=	110.36%
64) 1,2-Dichlorobenzene-d4	11.86	152	75046	63.05	ug/L	0.00
Spiked Amount	50.000	Range	80 - 120	Recovery	=	126.10%#

## Target Compounds

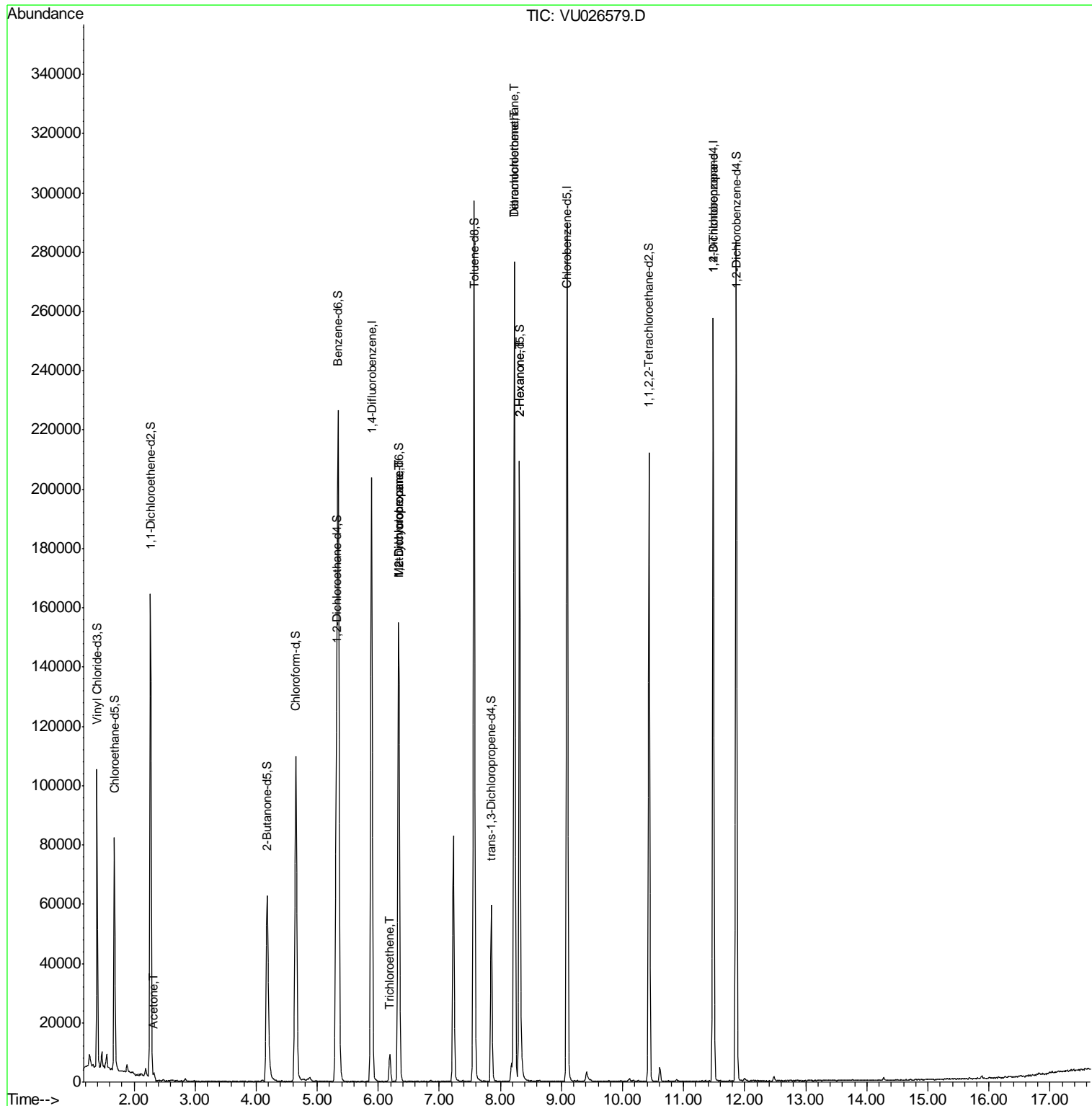
Target Compounds	R.T.	QIon	Response	Conc	Units	Qvalue
13) Acetone	2.32	43	1946	2.729	ug/L	98
34) Trichloroethene	6.19	95	3518	3.073	ug/L	99
35) Methylcyclohexane	6.33	83	16628	9.303	ug/L #	18
37) 1,2-Dichloropropane	6.33	63	7854	6.217	ug/L #	88
46) Tetrachloroethene	8.23	164	62635	66.925	ug/L	99
48) 2-Hexanone	8.31	43	8769	6.535	ug/L #	64
49) Dibromochloromethane	8.23	129	58667	44.986	ug/L #	10
59) 1,2,3-Trichloropropane	11.49	75	7437	4.718	ug/L #	85

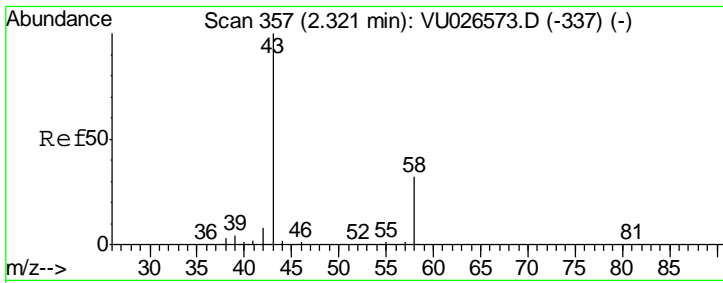
(#) = qualifier out of range (m) = manual integration (+) = signals summed

Data Path : Z:\VOASRV\HPCHEM1\MSVOA\_U\DATA\VU090618\  
 Data File : VU026579.D  
 Acq On : 06 Sep 2018 14:47  
 Operator : MD/SY  
 Sample : J4718-18  
 Misc : 5.0mL/MSVOA\_U/WATER  
 ALS Vial : 8 Sample Multiplier: 1

Instrument :  
 MSVOA\_U  
 ClientSampled :  
 BEGD4

Quant Time: Sep 07 04:45:39 2018  
 Quant Method : Z:\VOASRV\HPCHEM1\MSVOA\_U\METHOD\SOMULM082918WMA.M  
 Quant Title : VOC Analysis  
 QLast Update : Fri Sep 07 04:44:56 2018  
 Response via : Initial Calibration

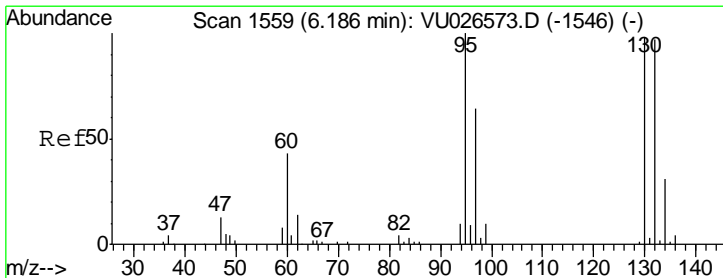
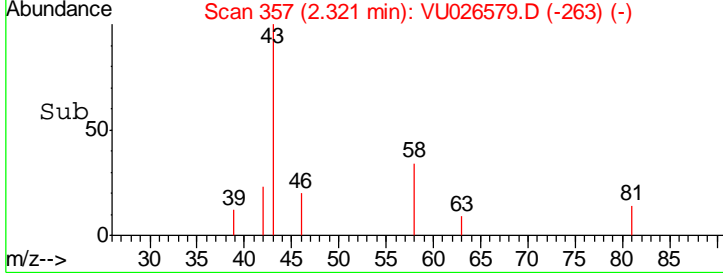
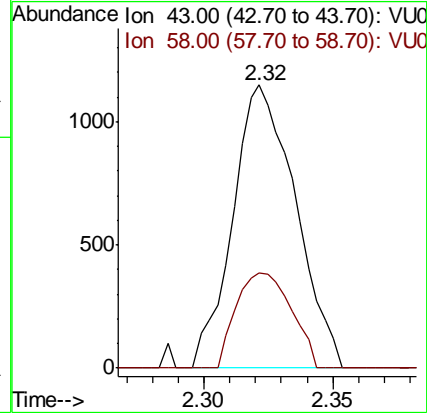
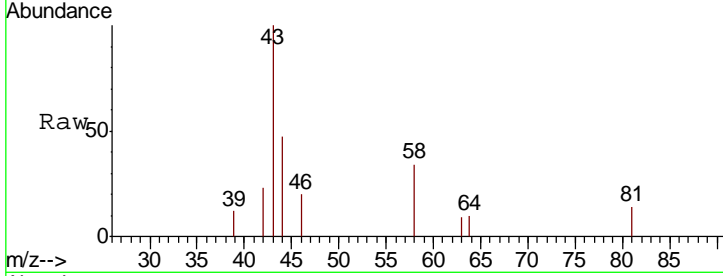




#13  
 Acetone  
 Concen: 2.729 ug/L  
 RT: 2.32 min Scan# 357  
 Delta R.T. 0.00 min  
 Lab File: VU026579.D  
 Acq: 06 Sep 2018 14:47

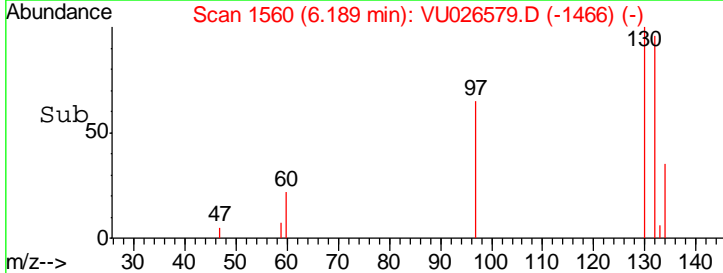
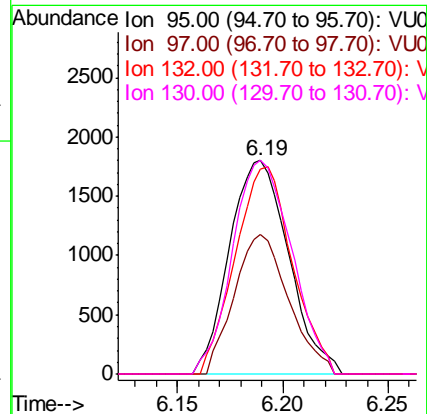
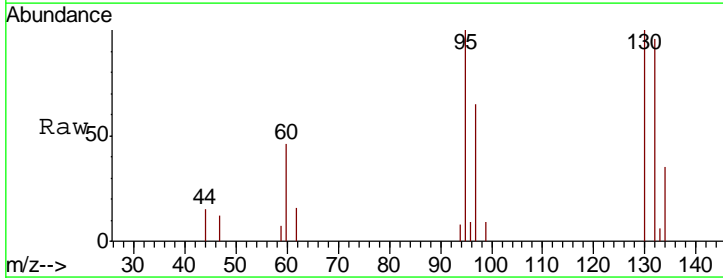
Instrument :  
 MSVOA\_U  
 ClientSampled :  
 BEGD4

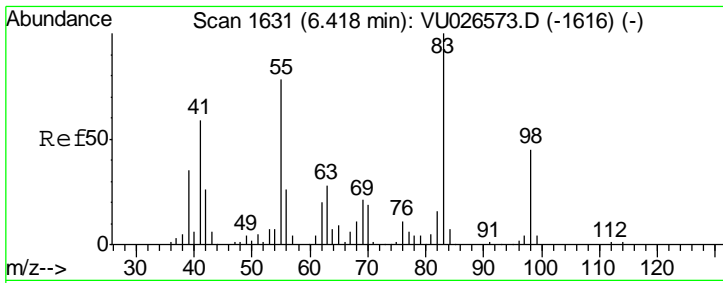
Tgt Ion	Resp	Lower	Upper
43	1946		
58	29.6	0.0	61.2



#34  
 Trichloroethene  
 Concen: 3.073 ug/L  
 RT: 6.19 min Scan# 1560  
 Delta R.T. 0.00 min  
 Lab File: VU026579.D  
 Acq: 06 Sep 2018 14:47

Tgt Ion	Resp	Lower	Upper
95	3518		
97	65.3	45.1	83.7
132	96.1	67.5	125.3
130	100.0	69.3	128.7

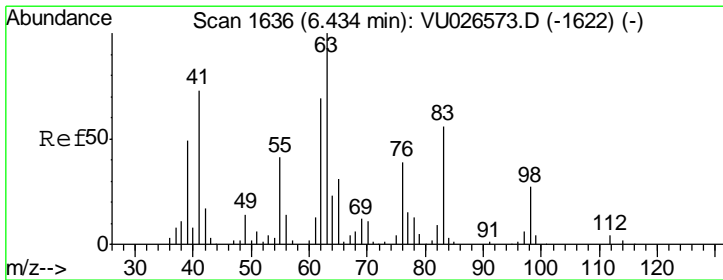
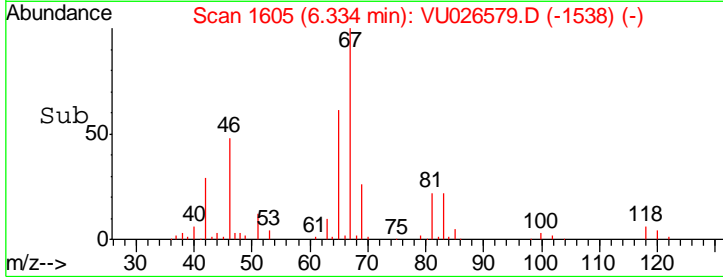
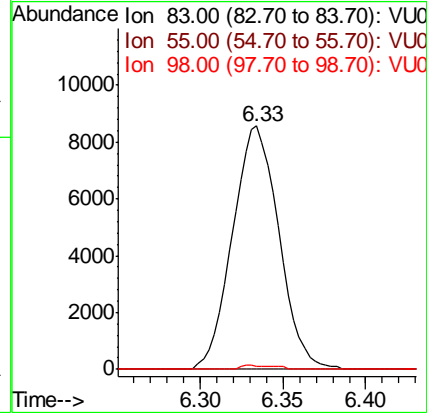
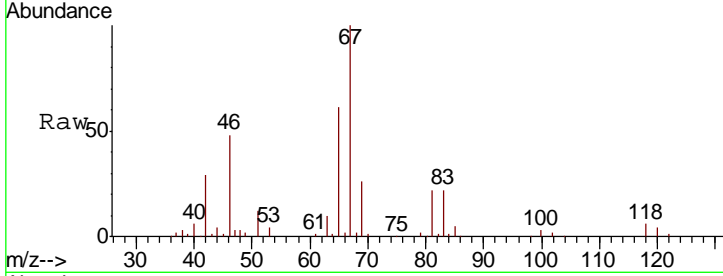




#35  
 Methylcyclohexane  
 Concen: 9.303 ug/L  
 RT: 6.33 min Scan# 1605  
 Delta R.T. -0.09 min  
 Lab File: VU026579.D  
 Acq: 06 Sep 2018 14:47

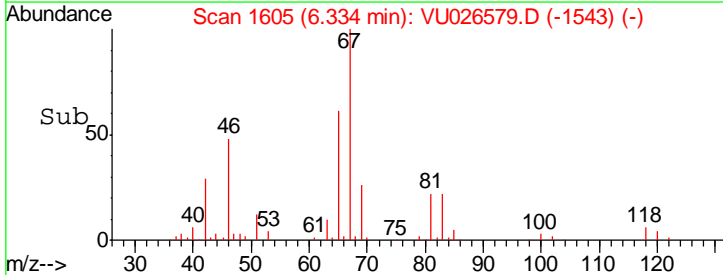
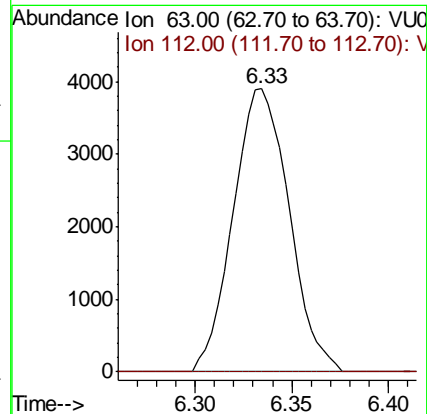
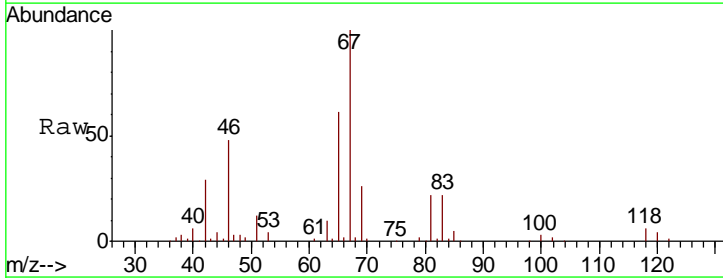
Instrument :  
 MSVOA\_U  
 ClientSampled :  
 BEGD4

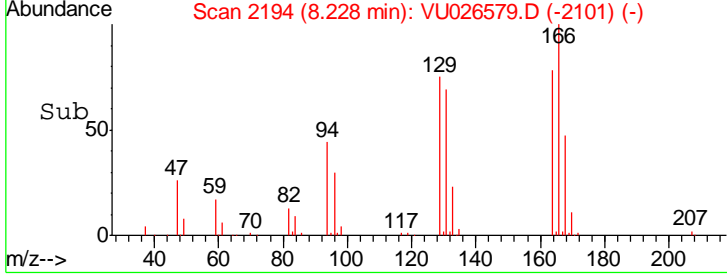
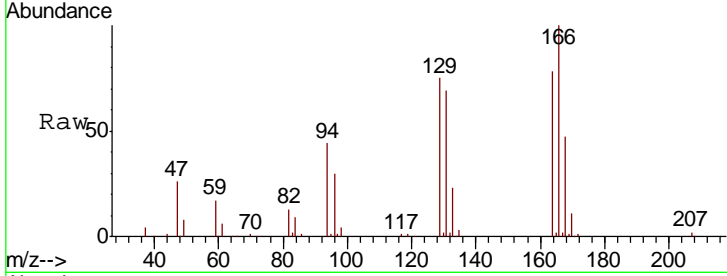
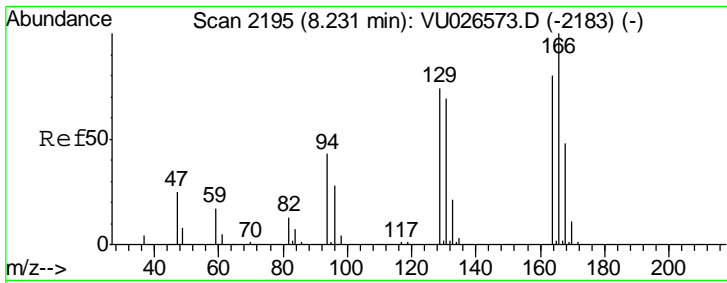
Tgt Ion	Resp	Lower	Upper
83	16628		
55	0.0	63.3	94.9#
98	0.7	36.7	55.1#



#37  
 1,2-Dichloropropane  
 Concen: 6.217 ug/L  
 RT: 6.33 min Scan# 1605  
 Delta R.T. -0.10 min  
 Lab File: VU026579.D  
 Acq: 06 Sep 2018 14:47

Tgt Ion	Resp	Lower	Upper
63	7854		
112	0.0	3.0	4.6#

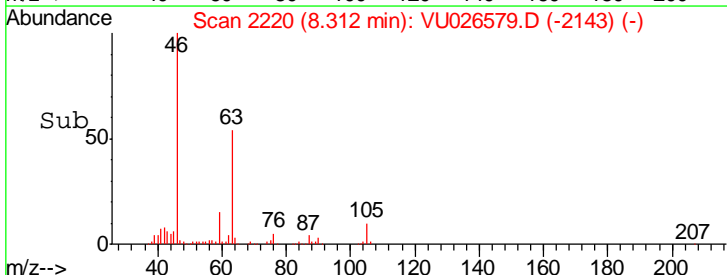
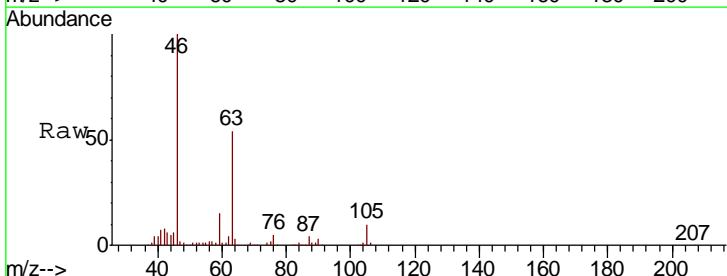
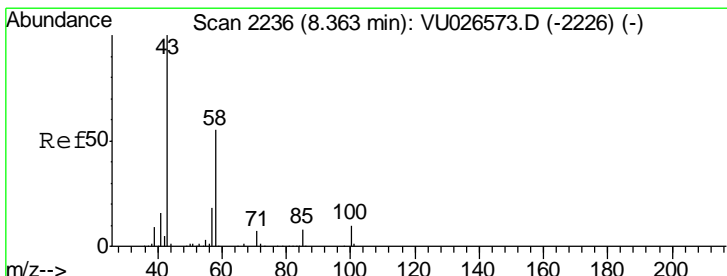
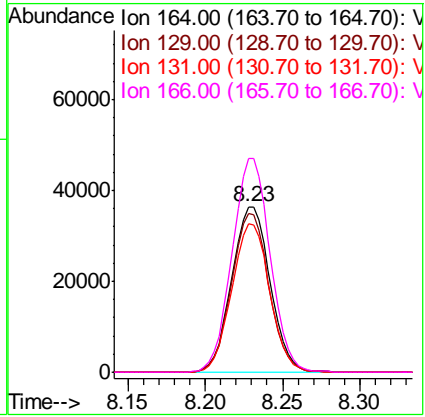




#46  
 Tetrachloroethene  
 Concen: 66.925 ug/L  
 RT: 8.23 min Scan# 2194  
 Delta R.T. -0.00 min  
 Lab File: VU026579.D  
 Acq: 06 Sep 2018 14:47

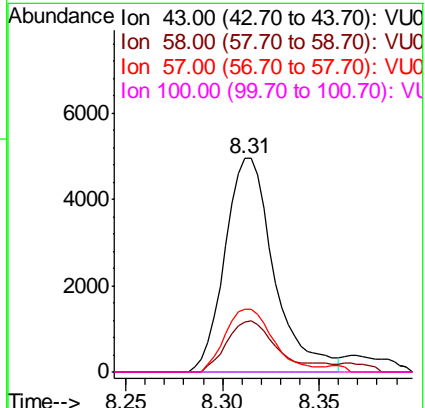
Instrument :  
 MSVOA\_U  
 ClientSampled :  
 BEGD4

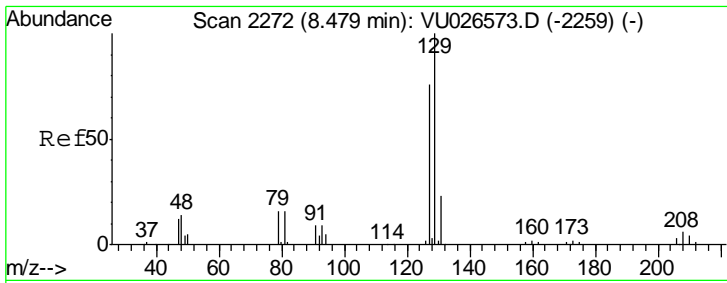
Tgt Ion	Resp	Lower	Upper
164	100		
129	96.2	67.3	125.1
131	89.6	65.3	121.3
166	129.0	90.9	168.7



#48  
 2-Hexanone  
 Concen: 6.535 ug/L  
 RT: 8.31 min Scan# 2220  
 Delta R.T. -0.05 min  
 Lab File: VU026579.D  
 Acq: 06 Sep 2018 14:47

Tgt Ion	Resp	Lower	Upper
43	100		
58	22.9	42.2	63.4#
57	28.8	14.6	21.8#
100	0.0	8.3	12.5#

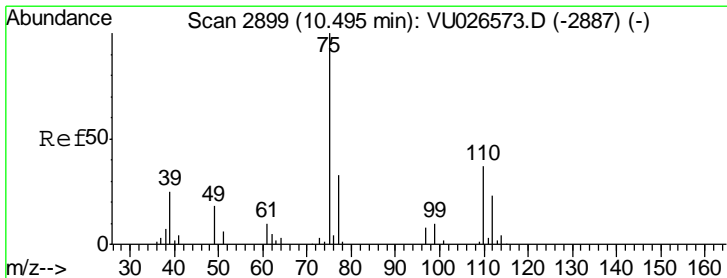
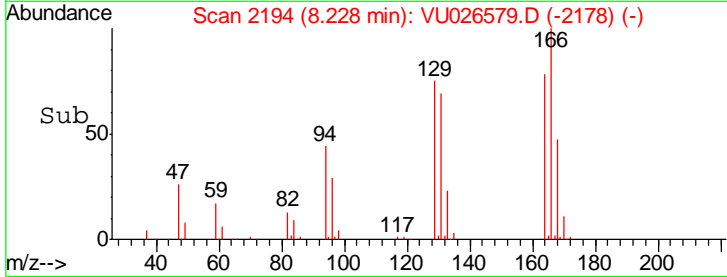
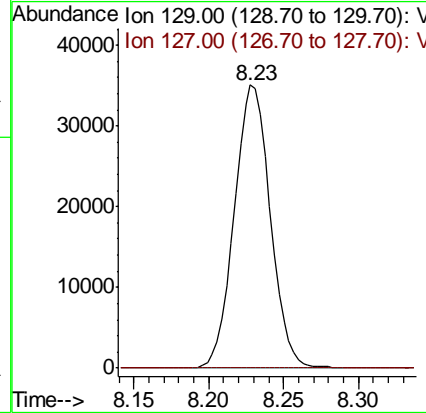
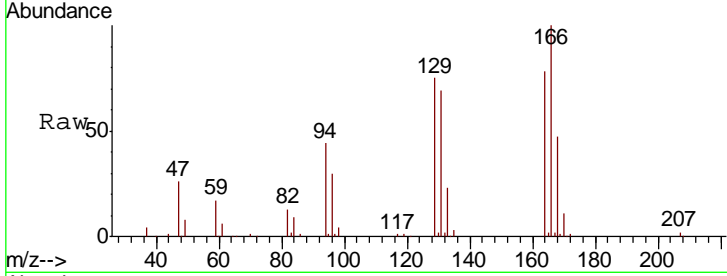




#49  
 Dibromochloromethane  
 Concen: 44.986 ug/L  
 RT: 8.23 min Scan# 2194  
 Delta R.T. -0.25 min  
 Lab File: VU026579.D  
 Acq: 06 Sep 2018 14:47

Instrument :  
 MSVOA\_U  
 ClientSampled :  
 BEGD4

Tgt Ion: 129 Resp: 58667  
 Ion Ratio Lower Upper  
 129 100  
 127 0.0 55.0 102.2#



#59  
 1,2,3-Trichloropropane  
 Concen: 4.718 ug/L  
 RT: 11.49 min Scan# 3207  
 Delta R.T. 0.99 min  
 Lab File: VU026579.D  
 Acq: 06 Sep 2018 14:47

Tgt Ion: 75 Resp: 7437  
 Ion Ratio Lower Upper  
 75 100  
 77 39.4 25.0 37.6#

