

Data Path : Z:\VOASRV\HPCHEM1\MSVOA\_U\DATA\VU090618\  
 Data File : VU026607.D  
 Acq On : 07 Sep 2018 03:01  
 Operator : MD/SY  
 Sample : J4765-01 50X  
 Misc : 5.0mL/MSVOA\_U/WATER  
 ALS Vial : 37 Sample Multiplier: 1

Instrument :  
 MSVOA\_U  
 ClientSampleId :  
 COAE3

Quant Time: Sep 07 05:31:27 2018  
 Quant Method : Z:\VOASRV\HPCHEM1\MSVOA\_U\METHOD\SOMULM082918WMA.M  
 Quant Title : VOC Analysis  
 QLast Update : Fri Sep 07 05:26:58 2018  
 Response via : Initial Calibration

Internal Standards	R.T.	QIon	Response	Conc	Units	Dev(Min)
1) 1,4-Difluorobenzene	5.89	114	152767	50.00	ug/L	0.00
28) Chlorobenzene-d5	9.09	117	144419	50.00	ug/L	0.00
60) 1,4-Dichlorobenzene-d4	11.49	152	59162	50.00	ug/L	0.00

## System Monitoring Compounds

4) Vinyl Chloride-d3	1.40	65	52513	55.48	ug/L	0.00
Spiked Amount	50.000	Range	60 - 135	Recovery	=	110.96%
7) Chloroethane-d5	1.68	69	47645	55.74	ug/L	0.00
Spiked Amount	50.000	Range	70 - 130	Recovery	=	111.48%
11) 1,1-Dichloroethene-d2	2.27	63	77034	36.14	ug/L	0.00
Spiked Amount	50.000	Range	60 - 125	Recovery	=	72.28%
21) 2-Butanone-d5	4.18	46	86686	118.00	ug/L	0.00
Spiked Amount	100.000	Range	40 - 130	Recovery	=	118.00%
24) Chloroform-d	4.65	84	94771	53.01	ug/L	0.00
Spiked Amount	50.000	Range	70 - 125	Recovery	=	106.02%
26) 1,2-Dichloroethane-d4	5.31	65	64461	54.16	ug/L	0.00
Spiked Amount	50.000	Range	70 - 125	Recovery	=	108.32%
32) Benzene-d6	5.34	84	191875	57.64	ug/L	0.00
Spiked Amount	50.000	Range	70 - 125	Recovery	=	115.28%
36) 1,2-Dichloropropane-d6	6.33	67	66665	58.30	ug/L	0.00
Spiked Amount	50.000	Range	70 - 120	Recovery	=	116.60%
41) Toluene-d8	7.57	98	167765	52.21	ug/L	0.00
Spiked Amount	50.000	Range	80 - 120	Recovery	=	104.42%
43) trans-1,3-Dichloropropene-	7.85	79	26584	50.91	ug/L	0.00
Spiked Amount	50.000	Range	60 - 125	Recovery	=	101.82%
47) 2-Hexanone-d5	8.31	63	61012	116.34	ug/L	0.00
Spiked Amount	100.000	Range	45 - 130	Recovery	=	116.34%
57) 1,1,2,2-Tetrachloroethane-	10.43	84	90437	53.68	ug/L	0.00
Spiked Amount	50.000	Range	65 - 120	Recovery	=	107.36%
64) 1,2-Dichlorobenzene-d4	11.86	152	64231	59.84	ug/L	0.00
Spiked Amount	50.000	Range	80 - 120	Recovery	=	119.68%

## Target Compounds

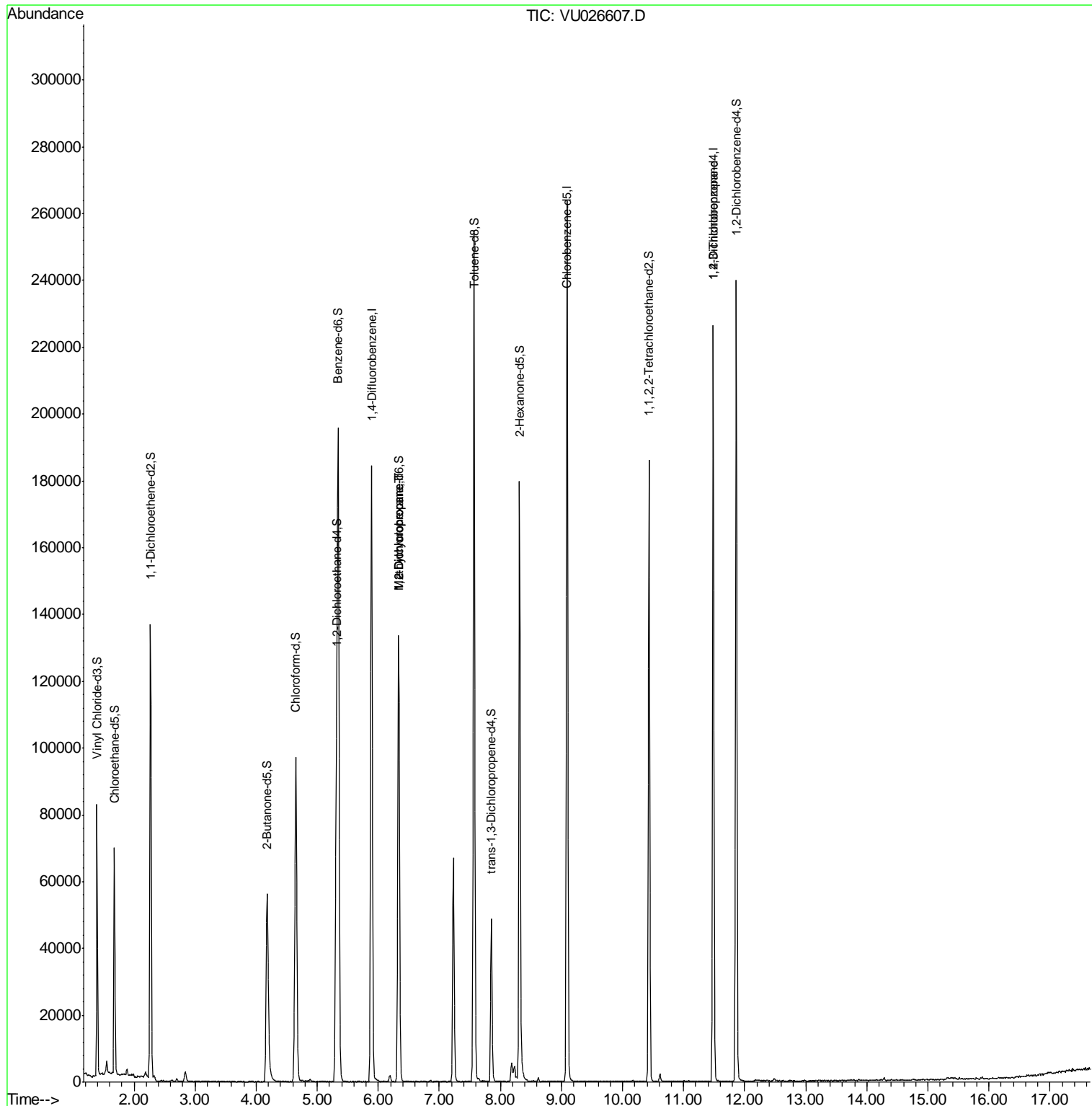
Target Compounds	R.T.	QIon	Response	Conc	Units	Qvalue
35) Methylcyclohexane	6.33	83	14511	8.948	ug/L #	18
37) 1,2-Dichloropropane	6.33	63	7040	6.142	ug/L #	88
59) 1,2,3-Trichloropropane	11.49	75	7052	4.931	ug/L #	87

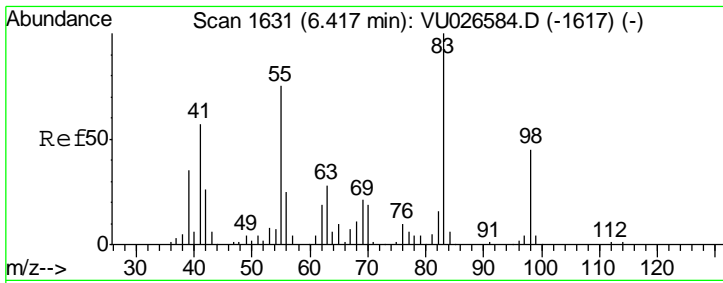
(#) = qualifier out of range (m) = manual integration (+) = signals summed

Data Path : Z:\VOASRV\HPCHEM1\MSVOA\_U\DATA\VU090618\  
 Data File : VU026607.D  
 Acq On : 07 Sep 2018 03:01  
 Operator : MD/SY  
 Sample : J4765-01 50X  
 Misc : 5.0mL/MSVOA\_U/WATER  
 ALS Vial : 37 Sample Multiplier: 1

Instrument :  
 MSVOA\_U  
 ClientSampled :  
 C0AE3

Quant Time: Sep 07 05:31:27 2018  
 Quant Method : Z:\VOASRV\HPCHEM1\MSVOA\_U\METHOD\SOMULM082918WMA.M  
 Quant Title : VOC Analysis  
 QLast Update : Fri Sep 07 05:26:58 2018  
 Response via : Initial Calibration

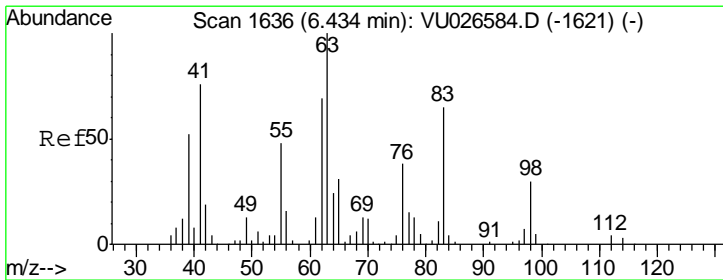
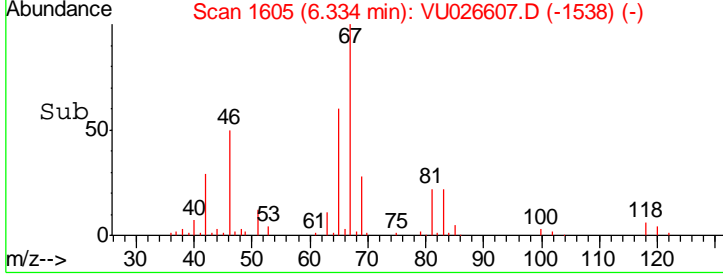
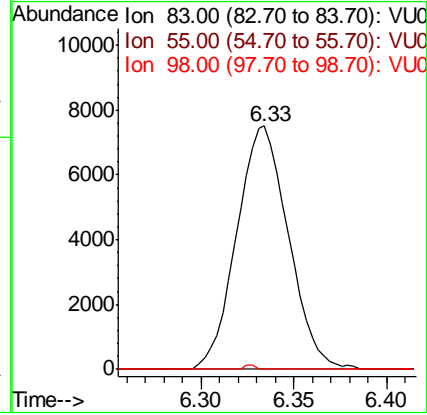
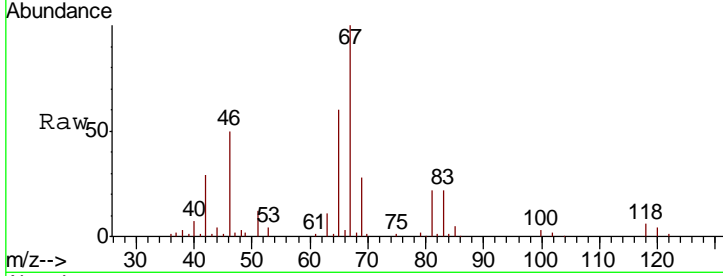




#35  
 Methylcyclohexane  
 Concen: 8.948 ug/L  
 RT: 6.33 min Scan# 1605  
 Delta R.T. -0.09 min  
 Lab File: VU026607.D  
 Acq: 07 Sep 2018 03:01

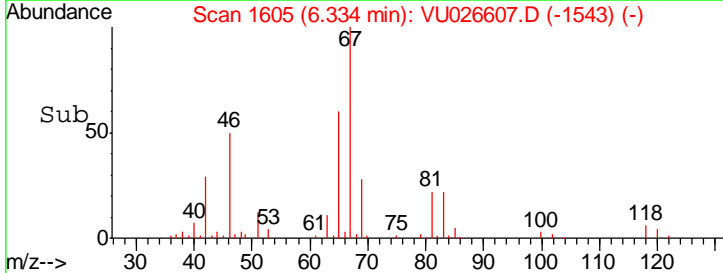
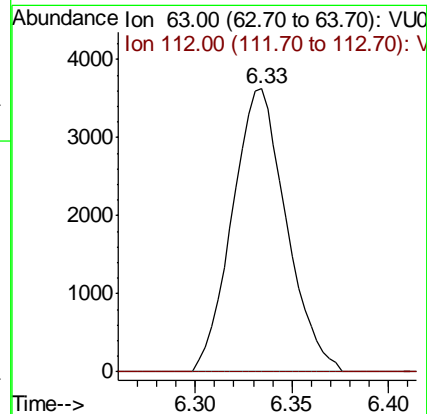
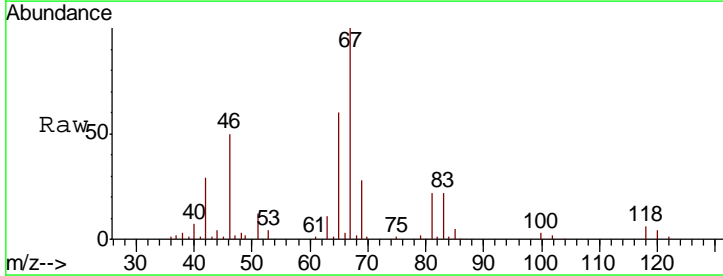
Instrument :  
 MSVOA\_U  
 ClientSampled :  
 COAE3

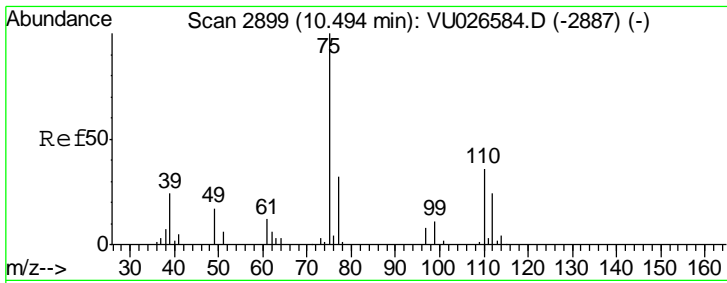
Tgt Ion	Resp	Lower	Upper
83	14511		
55	0.0	63.3	94.9#
98	0.3	36.7	55.1#



#37  
 1,2-Dichloropropane  
 Concen: 6.142 ug/L  
 RT: 6.33 min Scan# 1605  
 Delta R.T. -0.10 min  
 Lab File: VU026607.D  
 Acq: 07 Sep 2018 03:01

Tgt Ion	Resp	Lower	Upper
63	7040		
112	0.0	3.0	4.6#





#59  
 1,2,3-Trichloropropane  
 Concen: 4.931 ug/L  
 RT: 11.49 min Scan# 3207  
 Delta R.T. 0.99 min  
 Lab File: VU026607.D  
 Acq: 07 Sep 2018 03:01

Instrument :  
 MSVOA\_U  
 ClientSampled :  
 COAE3

Tgt Ion: 75 Resp: 7052  
 Ion Ratio Lower Upper  
 75 100  
 77 38.6 25.0 37.6#

