

Data File : VU034288.D  
 Acq On : 05 Sep 2019 17:05  
 Operator : JC/SP  
 Sample : PB122726TB  
 Misc : 5.0mL/MSVOA\_U/WATER  
 ALS Vial : 22 Sample Multiplier: 1

Instrument :  
 MSVOA\_U  
 Client Sampled :  
 PB122726TB

Quant Time: Sep 06 07:37:33 2019  
 Quant Method : Z:\VOASRV\HPCHEM1\MSVOA\_U\METHOD\82U090619W.M  
 Quant Title : SW846 8260  
 QLast Update : Fri Sep 06 05:10:13 2019  
 Response via : Initial Calibration

Internal Standards	R.T.	QIon	Response	Conc	Units	Dev(Min)
1) Pentafluorobenzene	4.96	168	444836	50.00	ug/l	0.00
34) 1,4-Difluorobenzene	5.87	114	697883	50.00	ug/l	0.00
63) Chlorobenzene-d5	9.07	117	687868	50.00	ug/l	0.00
72) 1,4-Dichlorobenzene-d4	11.46	152	336867	50.00	ug/l	0.00

System Monitoring Compounds

33) 1,2-Dichloroethane-d4	5.29	65	276036	41.01	ug/l	0.00
Spiked Amount	50.000		Recovery	=	82.02%	
35) Dibromofluoromethane	4.86	113	236655	36.44	ug/l	0.00
Spiked Amount	50.000		Recovery	=	72.88%	
50) Toluene-d8	7.55	98	943612	38.68	ug/l	0.00
Spiked Amount	50.000		Recovery	=	77.36%	
62) 4-Bromofluorobenzene	10.29	95	331494	35.19	ug/l	0.00
Spiked Amount	50.000		Recovery	=	70.38%	

Target Compounds

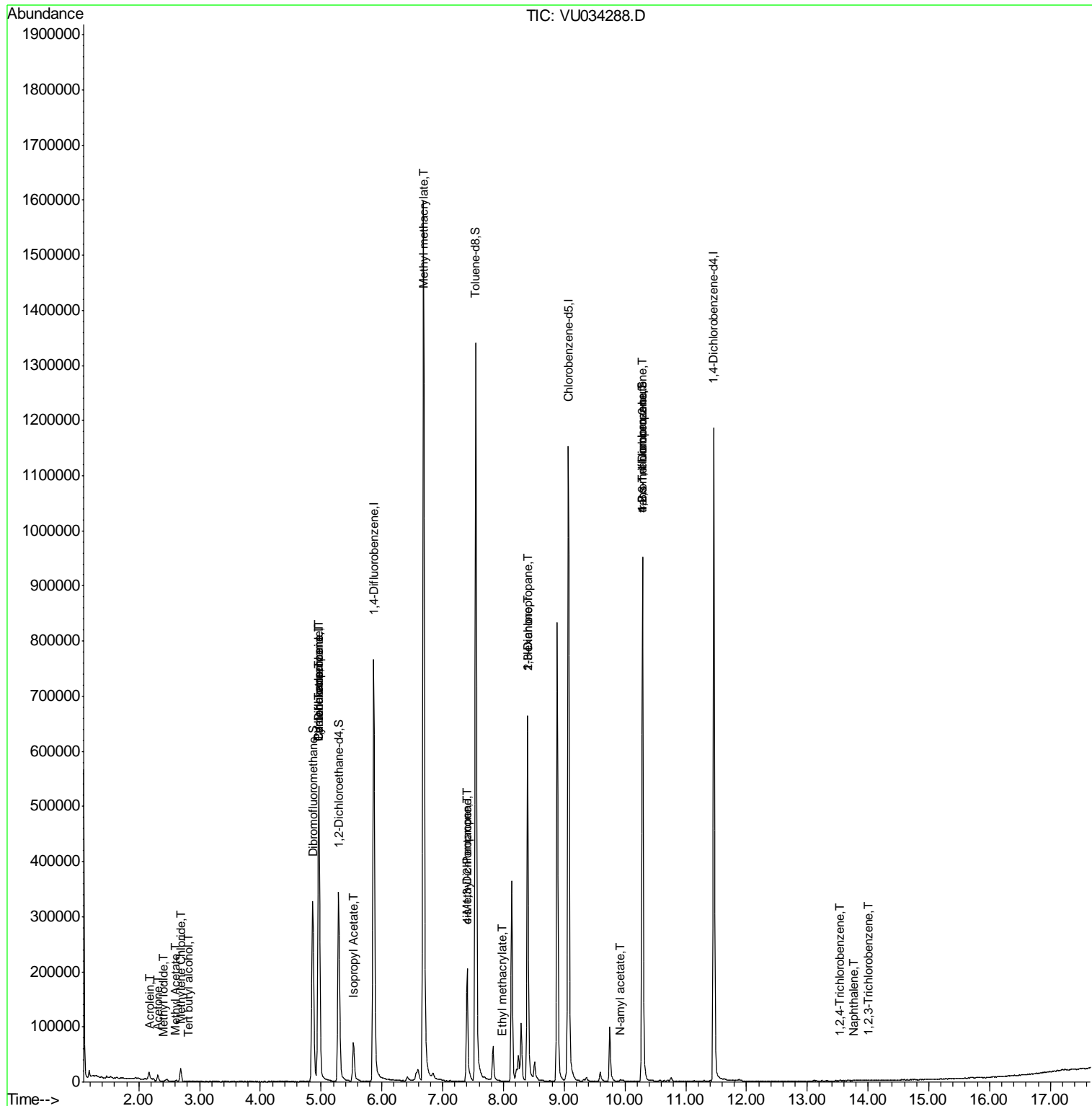
	R.T.	QIon	Response	Conc	Units	Qvalue
5) Bromomethane	1.63	94	912	Below Cal	#	73
6) Chloroethane	1.71	64	137	Below Cal	#	43
10) Methyl Iodide	2.40	142	484	3.941	ug/l #	43
11) Tert butyl alcohol	2.82	59	598	0.421	ug/l #	73
13) Acrolein	2.18	56	279	0.233	ug/l #	60
16) Acetone	2.31	43	10966	3.148	ug/l	90
18) Methyl Acetate	2.61	43	3520	0.415	ug/l #	76
20) Methylene Chloride	2.69	84	10734	1.494	ug/l	94
31) Cyclohexane	4.96	56	7260	0.921	ug/l #	1
36) 1,1-Dichloropropene	4.96	75	30571	4.039	ug/l #	48
38) Carbon Tetrachloride	4.96	117	39660	4.908	ug/l #	16
43) Isopropyl Acetate	5.53	43	84048	6.021	ug/l	99
48) Methyl methacrylate	6.68	41	136609	20.604	ug/l #	37
51) 4-Methyl-2-Pentanone	7.40	43	72053	7.457	ug/l #	45
54) cis-1,3-Dichloropropene	7.40	75	39495	3.763	ug/l #	63
56) Ethyl methacrylate	7.99	69	162	3.091	ug/l #	28
57) 1,3-Dichloropropane	8.40	76	6741	0.595	ug/l #	43
59) 2-Hexanone	8.40	43	91085	12.618	ug/l #	53
74) N-amyl acetate	9.92	43	2187	0.248	ug/l #	42
76) 1,2,3-Trichloropropane	10.29	75	157547	21.426	ug/l #	36
81) trans-1,4-Dichloro-2-buten	10.29	75	157547	72.053	ug/l #	100
93) 1,2,4-Trichlorobenzene	13.53	180	445	3.504	ug/l #	71
95) Naphthalene	13.77	128	942	4.005	ug/l #	69
96) 1,2,3-Trichlorobenzene	13.99	180	306	2.676	ug/l	84

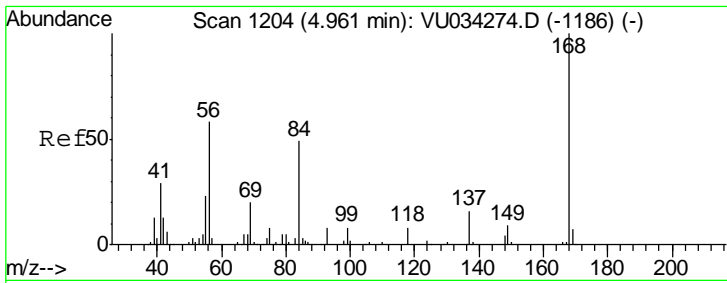
(#) = qualifier out of range (m) = manual integration (+) = signals summed

Data File : VU034288.D  
 Acq On : 05 Sep 2019 17:05  
 Operator : JC/SP  
 Sample : PB122726TB  
 Misc : 5.0mL/MSVOA\_U/WATER  
 ALS Vial : 22 Sample Multiplier: 1

Instrument :  
 MSVOA\_U  
 ClientSampleID :  
 PB122726TB

Quant Time: Sep 06 07:37:33 2019  
 Quant Method : Z:\VOASRV\HPCHEM1\MSVOA\_U\METHOD\82U090619W.M  
 Quant Title : SW846 8260  
 QLast Update : Fri Sep 06 05:10:13 2019  
 Response via : Initial Calibration

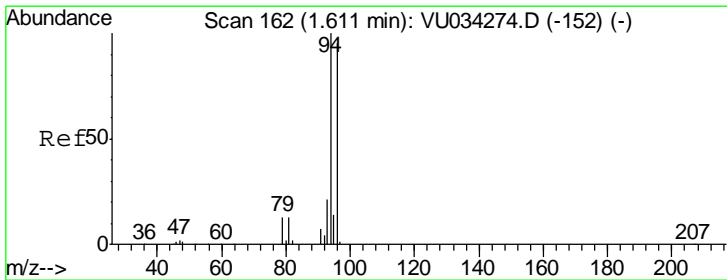
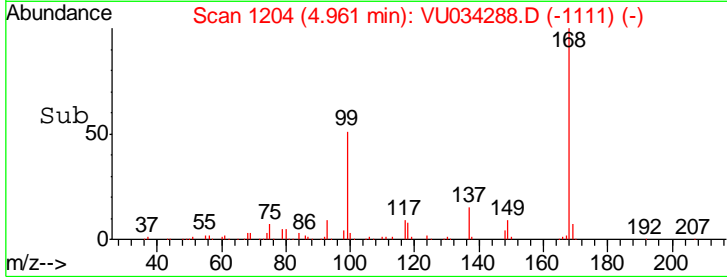
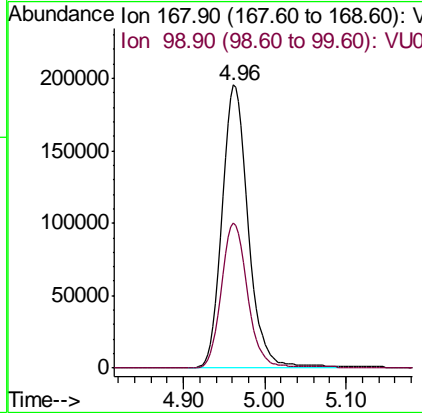
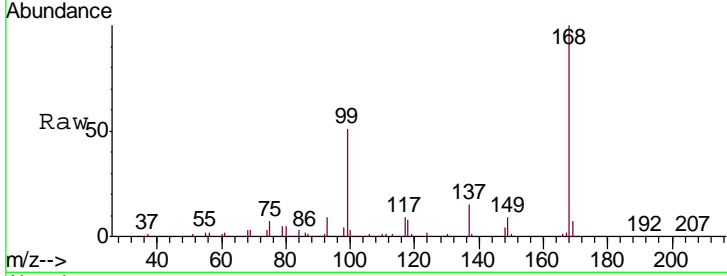




#1  
 Pentafluorobenzene  
 Concen: 50.000 ug/l  
 RT: 4.96 min Scan# 1204  
 Delta R.T. -0.00 min  
 Lab File: VU034288.D  
 Acq: 05 Sep 2019 17:05

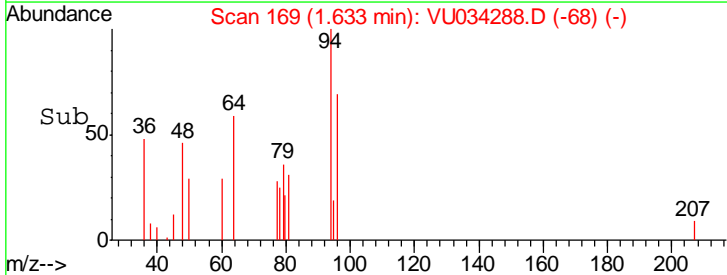
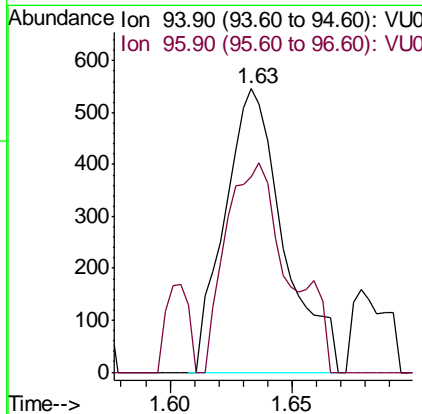
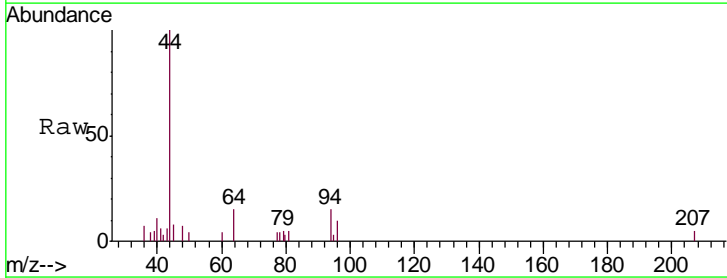
Instrument : MSVOA\_U  
 ClientSampled : PB122726TB

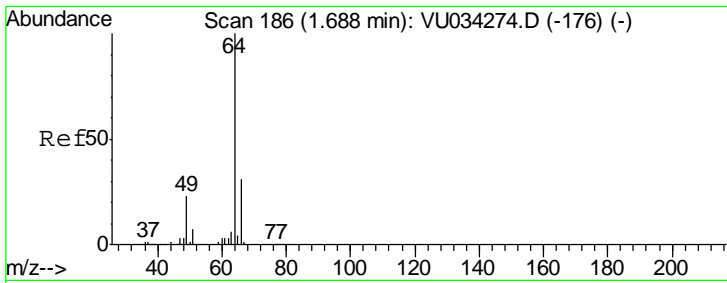
Tgt Ion: 168 Resp: 444836  
 Ion Ratio Lower Upper  
 168 100  
 99 51.1 41.6 62.4



#5  
 Bromomethane  
 Concen: Below Cal  
 RT: 1.63 min Scan# 169  
 Delta R.T. 0.02 min  
 Lab File: VU034288.D  
 Acq: 05 Sep 2019 17:05

Tgt Ion: 94 Resp: 912  
 Ion Ratio Lower Upper  
 94 100  
 96 68.9 75.7 113.5#

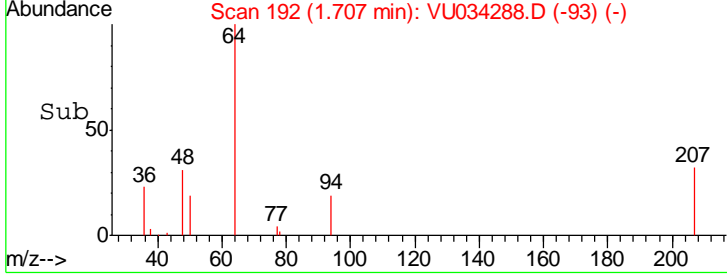
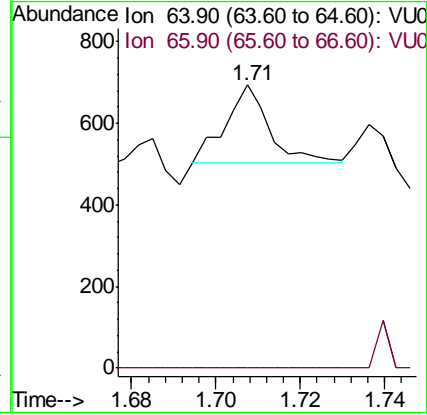
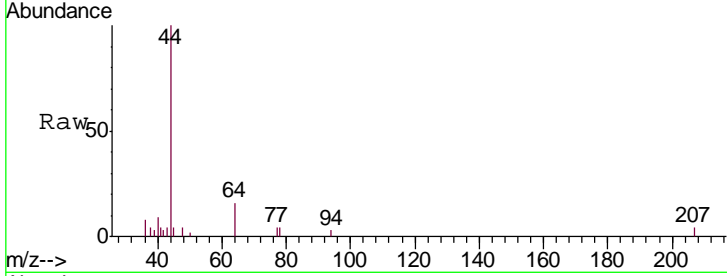




#6  
 Chloroethane  
 Concen: Below Cal  
 RT: 1.71 min Scan# 192  
 Delta R.T. 0.02 min  
 Lab File: VU034288.D  
 Acq: 05 Sep 2019 17:05

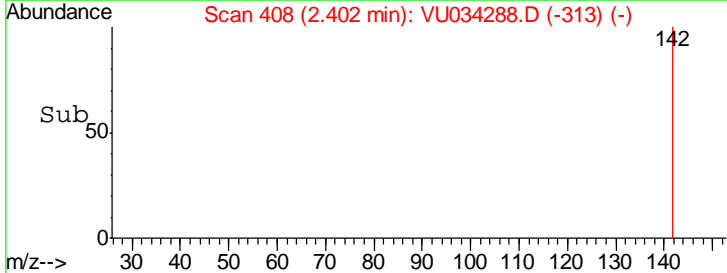
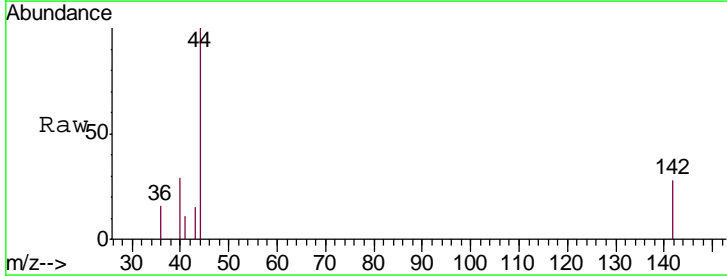
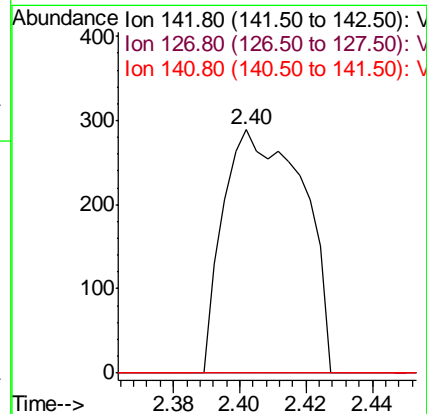
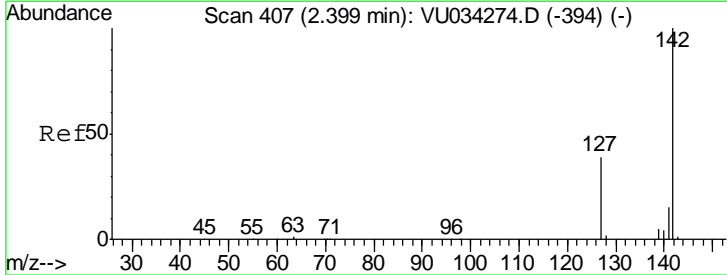
Instrument : MSVOA\_U  
 ClientSampled : PB122726TB

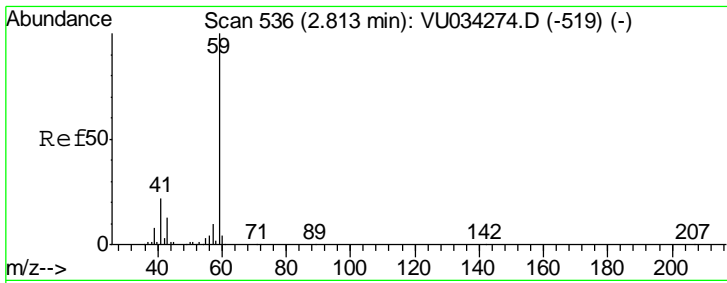
Tgt Ion: 64 Resp: 137  
 Ion Ratio Lower Upper  
 64 100  
 66 0.0 25.0 37.6#



#10  
 Methyl Iodide  
 Concen: 3.941 ug/l  
 RT: 2.40 min Scan# 408  
 Delta R.T. 0.00 min  
 Lab File: VU034288.D  
 Acq: 05 Sep 2019 17:05

Tgt Ion: 142 Resp: 484  
 Ion Ratio Lower Upper  
 142 100  
 127 0.0 32.1 48.1#  
 141 0.0 11.5 17.3#

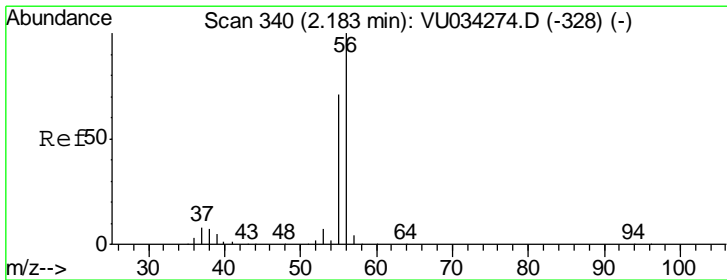
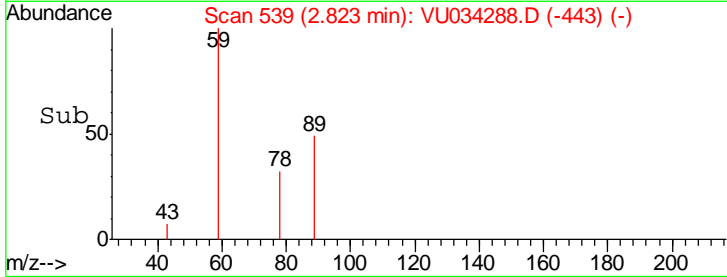
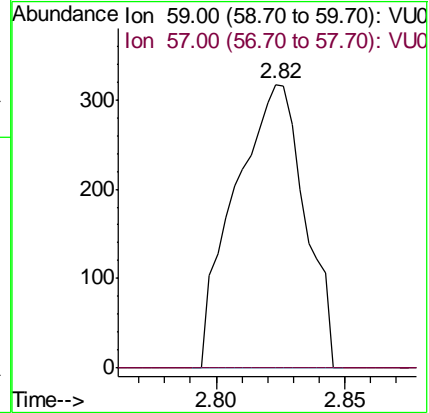
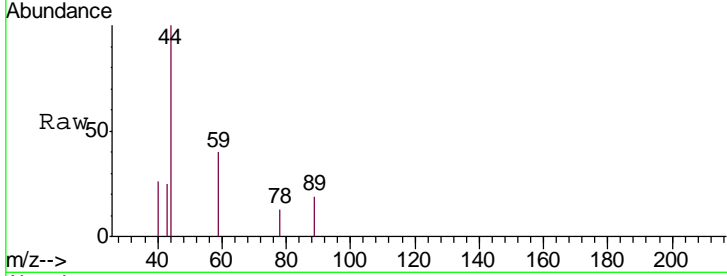




#11  
 Tert butyl alcohol  
 Concen: 0.421 ug/l  
 RT: 2.82 min Scan# 539  
 Delta R.T. 0.01 min  
 Lab File: VU034288.D  
 Acq: 05 Sep 2019 17:05

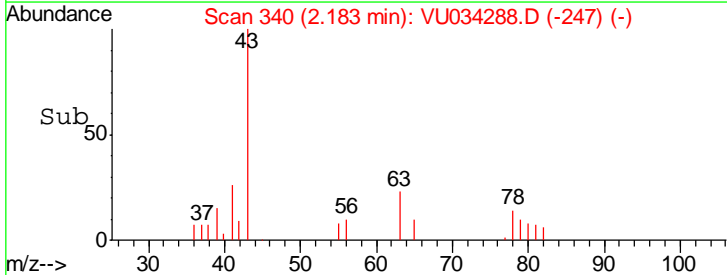
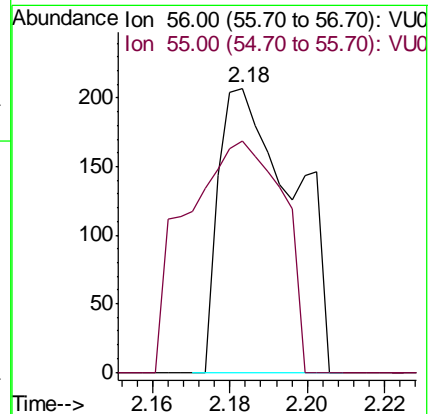
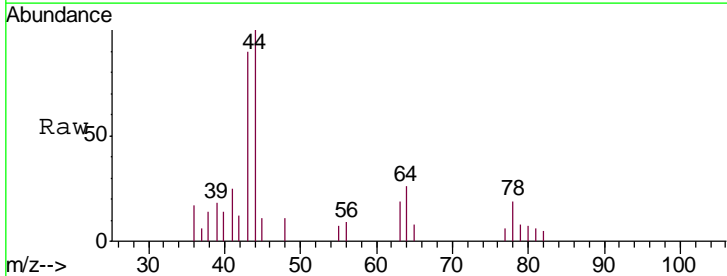
Instrument :  
 MSVOA\_U  
 ClientSampled :  
 PB122726TB

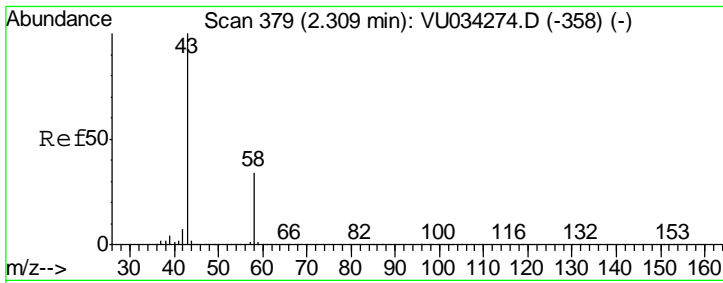
Tgt Ion: 59 Resp: 598  
 Ion Ratio Lower Upper  
 59 100  
 57 0.0 7.9 11.9#



#13  
 Acrolein  
 Concen: 0.233 ug/l  
 RT: 2.18 min Scan# 340  
 Delta R.T. 0.00 min  
 Lab File: VU034288.D  
 Acq: 05 Sep 2019 17:05

Tgt Ion: 56 Resp: 279  
 Ion Ratio Lower Upper  
 56 100  
 55 104.7 57.4 86.2#

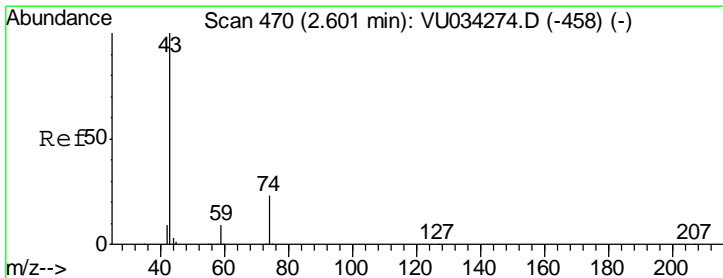
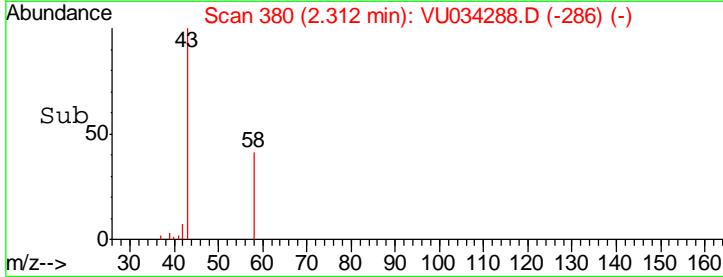
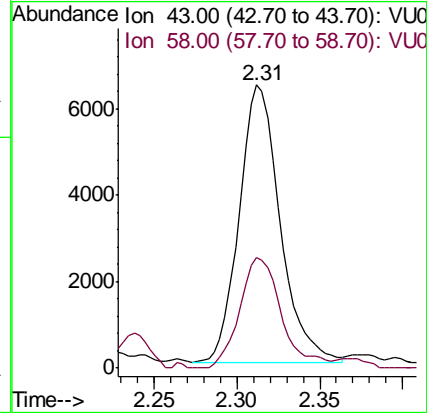
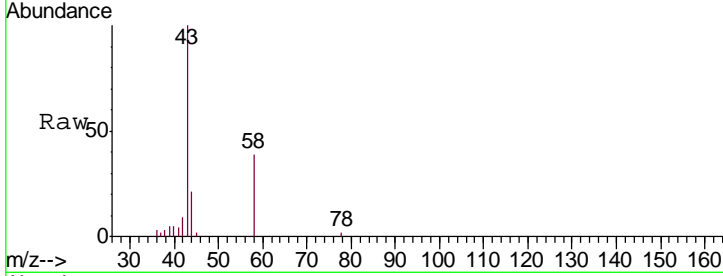




#16  
 Acetone  
 Concen: 3.148 ug/l  
 RT: 2.31 min Scan# 380  
 Delta R.T. 0.00 min  
 Lab File: VU034288.D  
 Acq: 05 Sep 2019 17:05

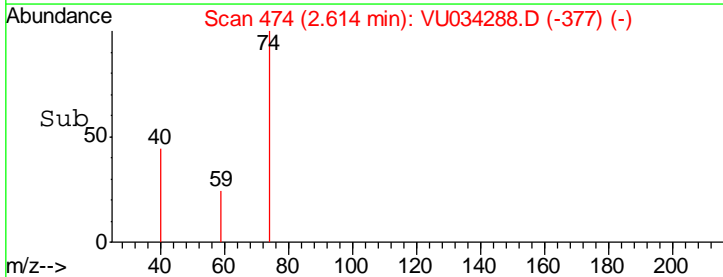
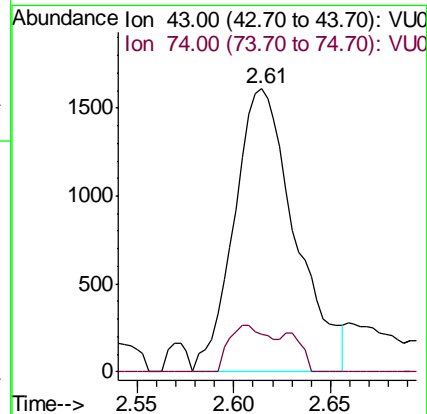
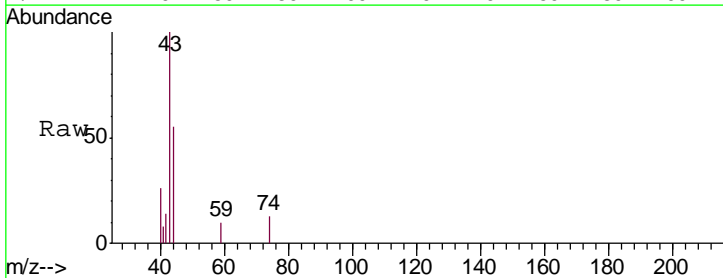
Instrument :  
 MSVOA\_U  
 ClientSampled :  
 PB122726TB

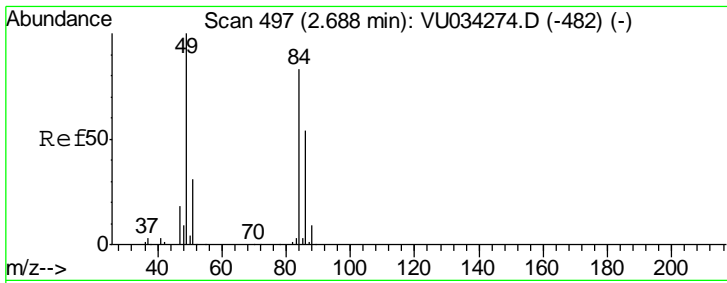
Tgt Ion: 43 Resp: 10966  
 Ion Ratio Lower Upper  
 43 100  
 58 40.0 27.6 41.4



#18  
 Methyl Acetate  
 Concen: 0.415 ug/l  
 RT: 2.61 min Scan# 474  
 Delta R.T. 0.01 min  
 Lab File: VU034288.D  
 Acq: 05 Sep 2019 17:05

Tgt Ion: 43 Resp: 3520  
 Ion Ratio Lower Upper  
 43 100  
 74 11.6 18.9 28.3#

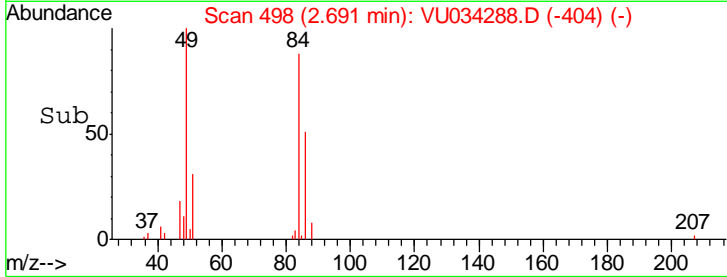
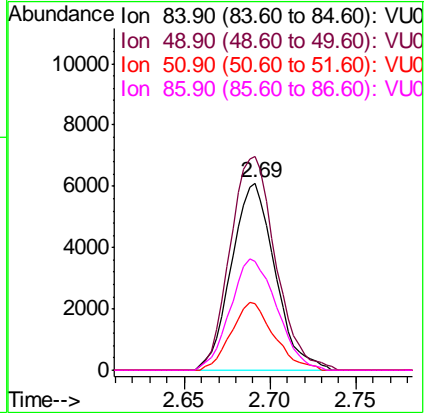
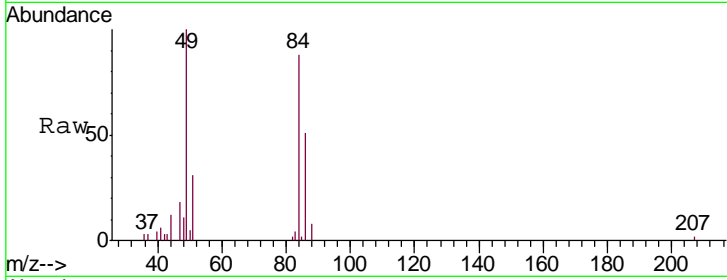




#20  
 Methylene Chloride  
 Concen: 1.494 ug/l  
 RT: 2.69 min Scan# 498  
 Delta R.T. 0.00 min  
 Lab File: VU034288.D  
 Acq: 05 Sep 2019 17:05

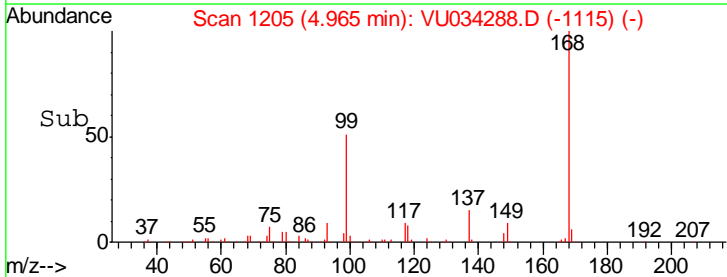
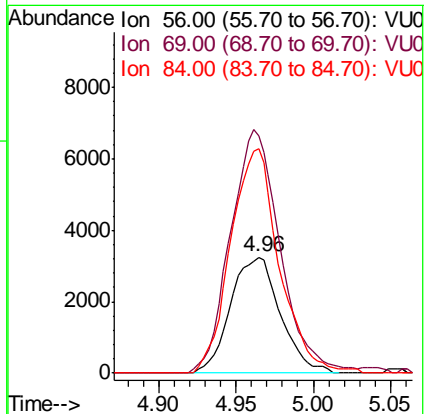
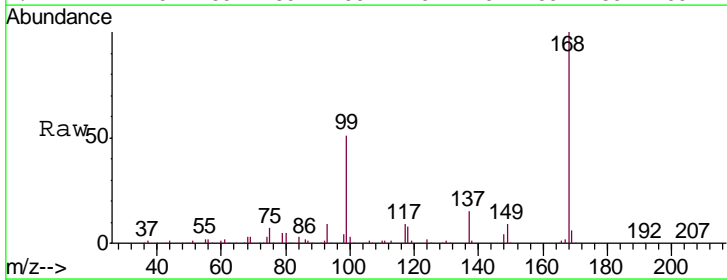
Instrument : MSVOA\_U  
 ClientSampled : PB122726TB

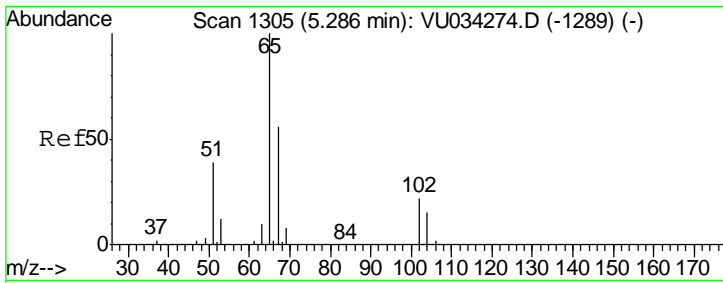
Tgt Ion	Resp	Lower	Upper
84	10734		
49	114.2	96.0	144.0
51	35.9	30.0	45.0
86	58.1	51.4	77.0



#31  
 Cyclohexane  
 Concen: 0.921 ug/l  
 RT: 4.96 min Scan# 1205  
 Delta R.T. -0.01 min  
 Lab File: VU034288.D  
 Acq: 05 Sep 2019 17:05

Tgt Ion	Resp	Lower	Upper
56	7260		
69	205.4	26.7	40.1#
84	193.9	68.2	102.4#

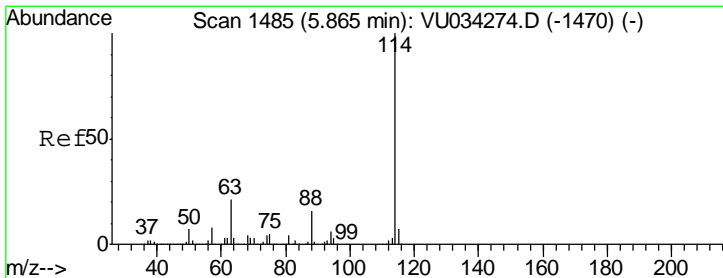
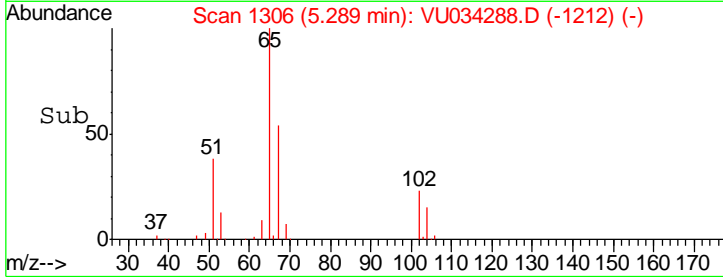
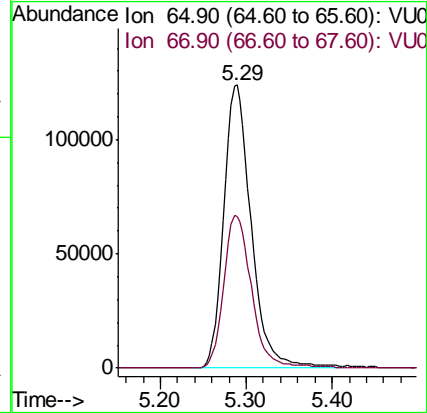
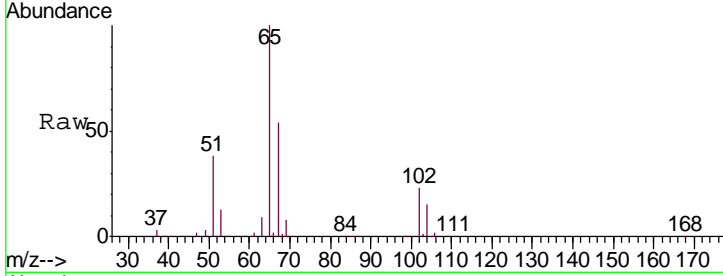




#33  
 1,2-Dichloroethane-d4  
 Concen: 41.013 ug/l  
 RT: 5.29 min Scan# 1306  
 Delta R.T. 0.00 min  
 Lab File: VU034288.D  
 Acq: 05 Sep 2019 17:05

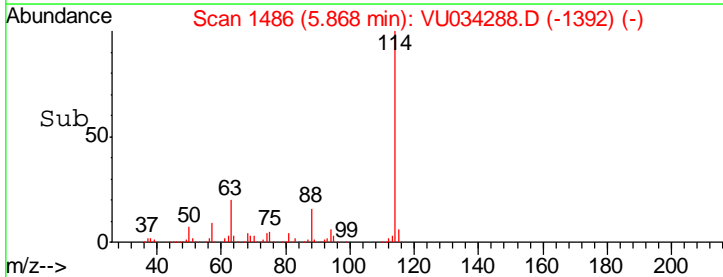
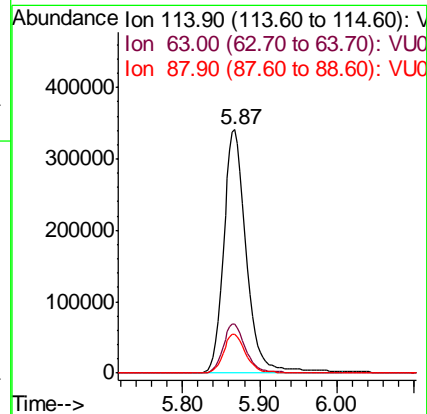
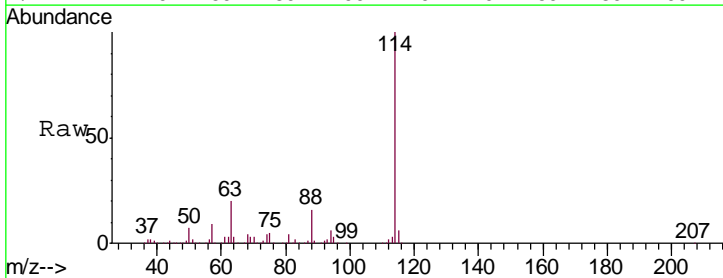
Instrument : MSVOA\_U  
 ClientSampleId : PB122726TB

Tgt Ion	Resp	Lower	Upper
65	100		
67	54.8	0.0	112.4

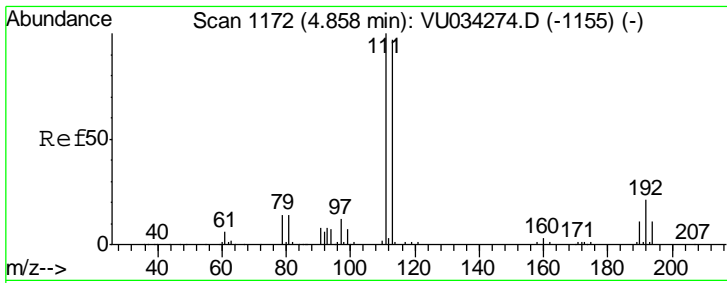


#34  
 1,4-Difluorobenzene  
 Concen: 50.000 ug/l  
 RT: 5.87 min Scan# 1486  
 Delta R.T. 0.00 min  
 Lab File: VU034288.D  
 Acq: 05 Sep 2019 17:05

Tgt Ion	Resp	Lower	Upper
114	100		
63	20.1	0.0	42.4
88	15.7	0.0	32.4



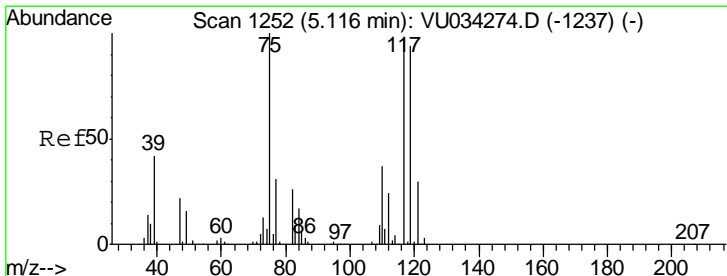
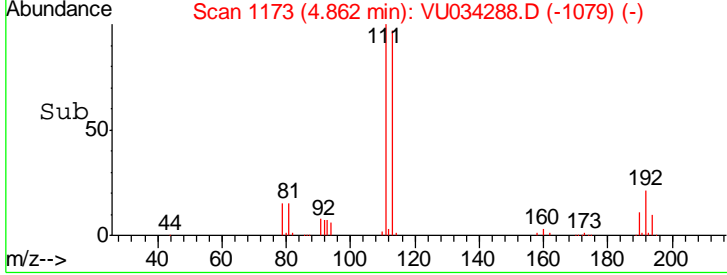
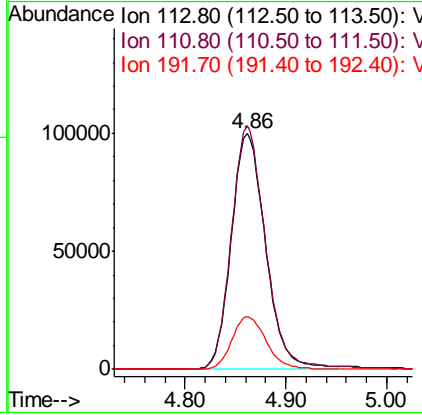
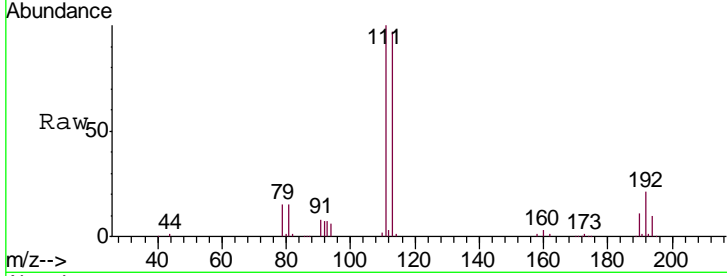




#35  
 Dibromofluoromethane  
 Concen: 36.443 ug/l  
 RT: 4.86 min Scan# 1173  
 Delta R.T. 0.00 min  
 Lab File: VU034288.D  
 Acq: 05 Sep 2019 17:05

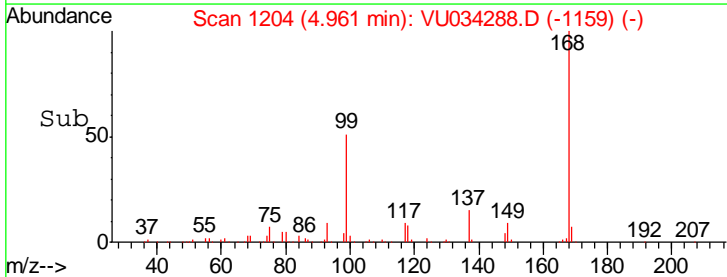
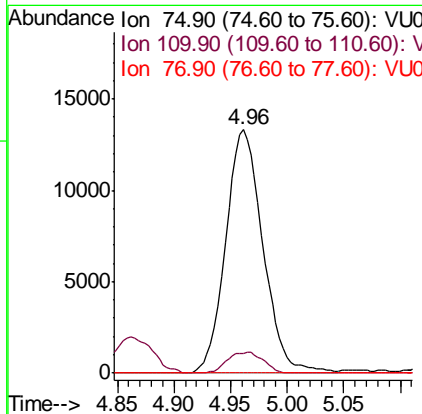
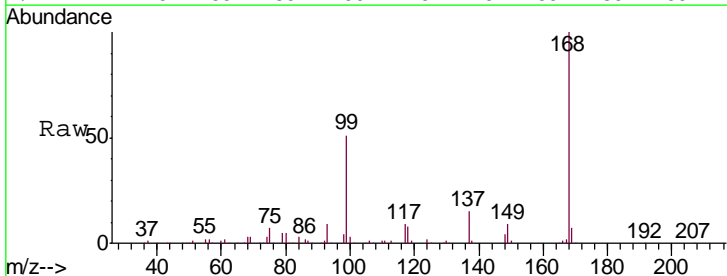
Instrument : MSVOA\_U  
 ClientSampled : PB122726TB

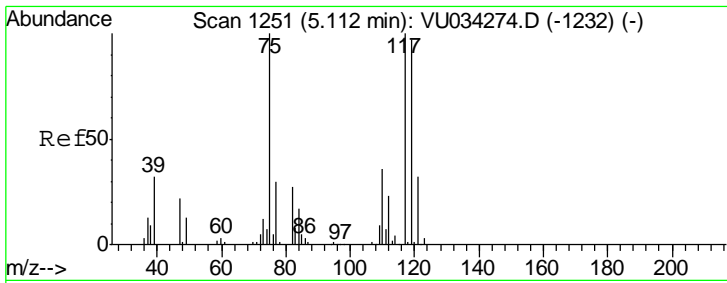
Tgt Ion	Resp	Lower	Upper
113	236655		
111	103.1	81.5	122.3
192	22.3	17.8	26.8



#36  
 1,1-Dichloropropene  
 Concen: 4.039 ug/l  
 RT: 4.96 min Scan# 1204  
 Delta R.T. -0.15 min  
 Lab File: VU034288.D  
 Acq: 05 Sep 2019 17:05

Tgt Ion	Resp	Lower	Upper
75	30571		
75	100		
110	8.2	18.3	54.9#
77	0.0	24.9	37.3#

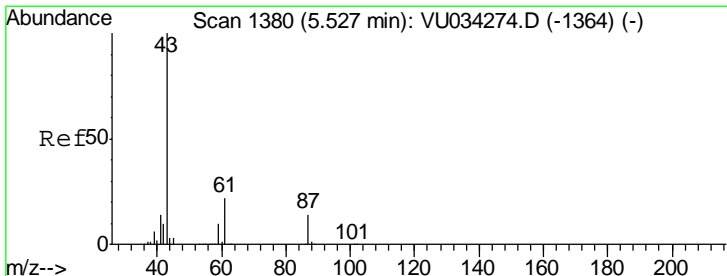
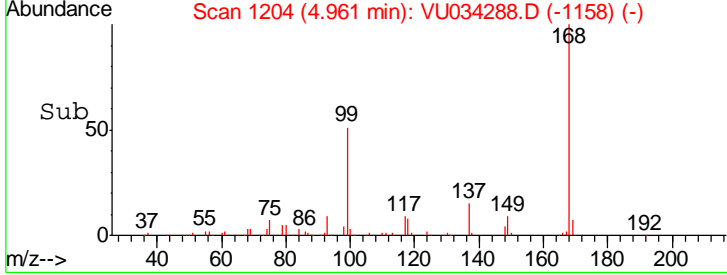
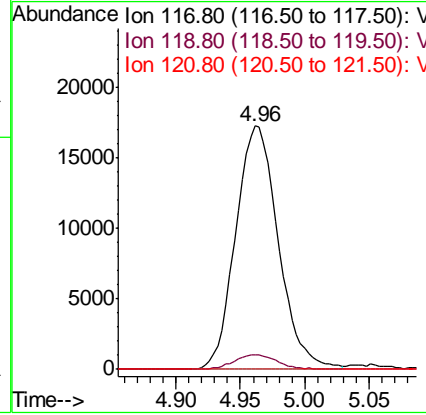
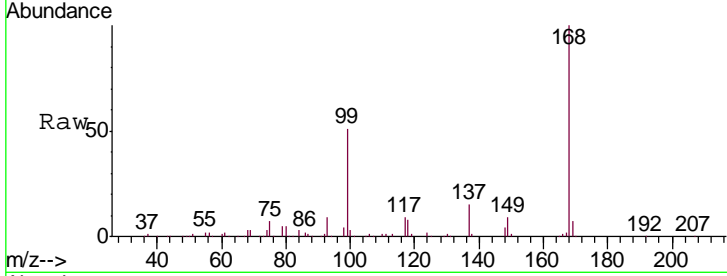




#38  
 Carbon Tetrachloride  
 Concen: 4.908 ug/l  
 RT: 4.96 min Scan# 1204  
 Delta R.T. -0.15 min  
 Lab File: VU034288.D  
 Acq: 05 Sep 2019 17:05

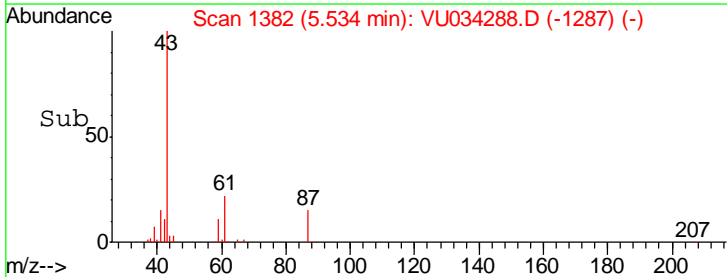
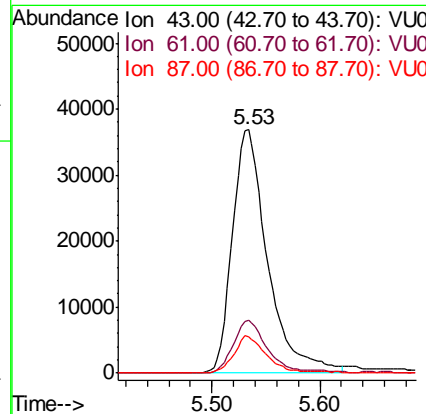
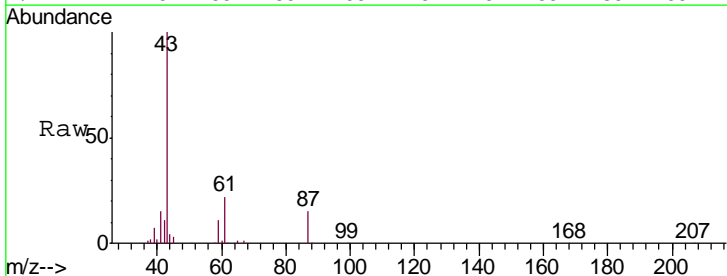
Instrument : MSVOA\_U  
 ClientSampled : PB122726TB

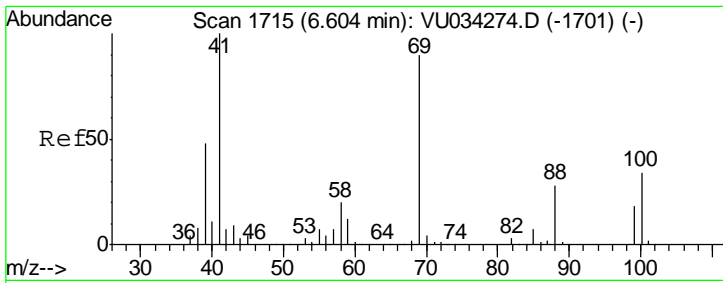
Tgt Ion	Resp	Lower	Upper
117	39660		
119	6.2	77.8	116.6#
121	0.0	25.2	37.8#



#43  
 Isopropyl Acetate  
 Concen: 6.021 ug/l  
 RT: 5.53 min Scan# 1382  
 Delta R.T. 0.01 min  
 Lab File: VU034288.D  
 Acq: 05 Sep 2019 17:05

Tgt Ion	Resp	Lower	Upper
43	84048		
61	21.1	17.1	25.7
87	14.3	11.1	16.7

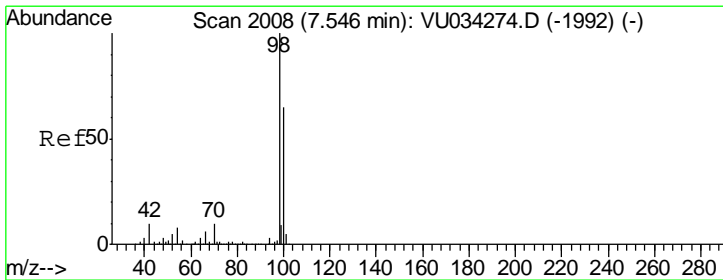
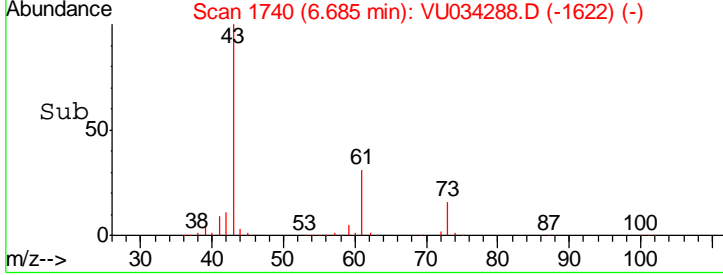
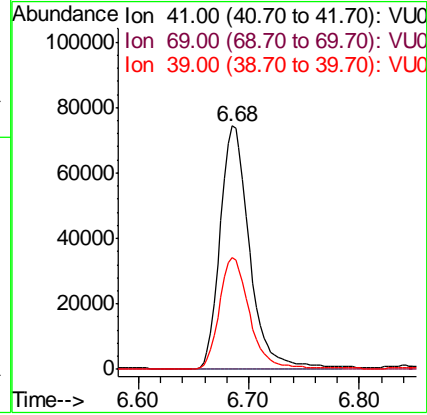
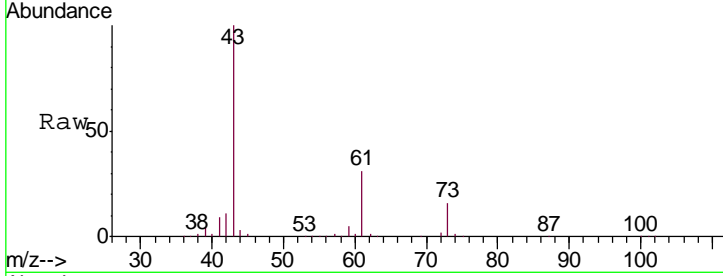




#48  
 Methyl methacrylate  
 Concen: 20.604 ug/l  
 RT: 6.68 min Scan# 1740  
 Delta R.T. 0.08 min  
 Lab File: VU034288.D  
 Acq: 05 Sep 2019 17:05

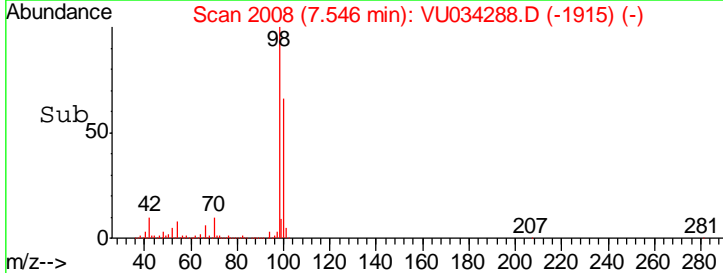
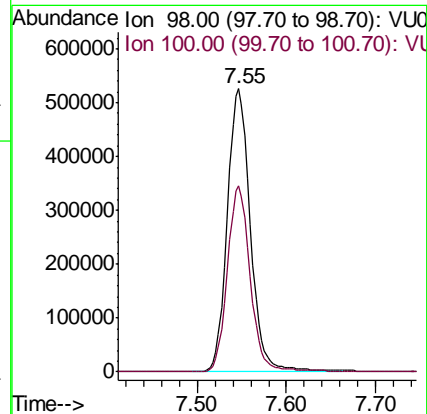
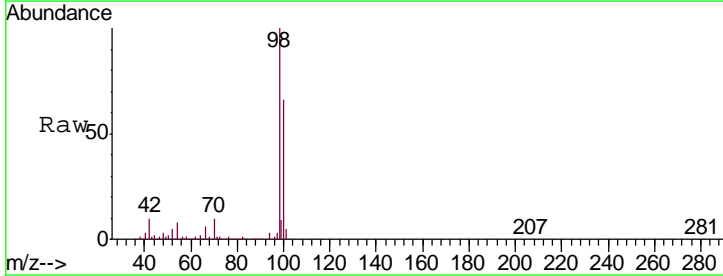
Instrument :  
 MSVOA\_U  
 ClientSampled :  
 PB122726TB

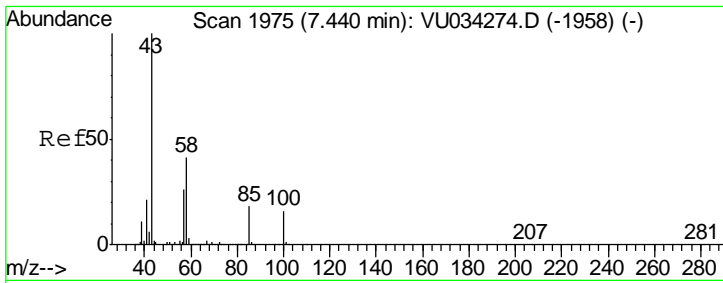
Tgt Ion	Resp	Lower	Upper
41	136609		
69	0.2	72.8	109.2#
39	47.9	38.6	58.0



#50  
 Toluene-d8  
 Concen: 38.677 ug/l  
 RT: 7.55 min Scan# 2008  
 Delta R.T. -0.00 min  
 Lab File: VU034288.D  
 Acq: 05 Sep 2019 17:05

Tgt Ion	Resp	Lower	Upper
98	943612		
100	65.1	51.7	77.5

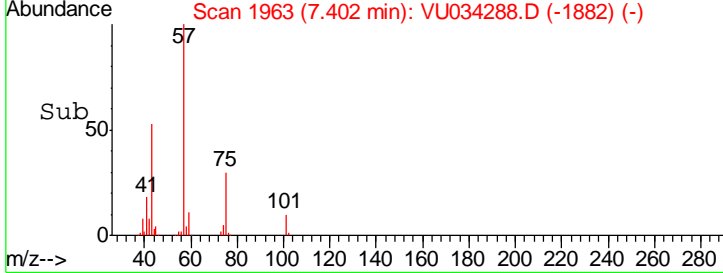
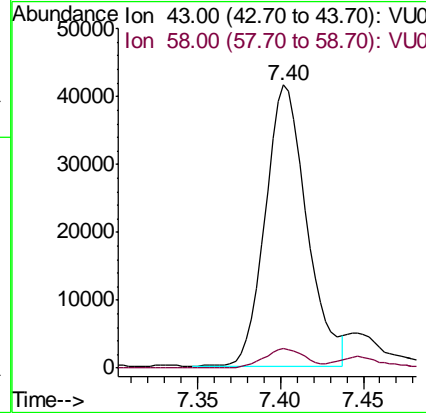
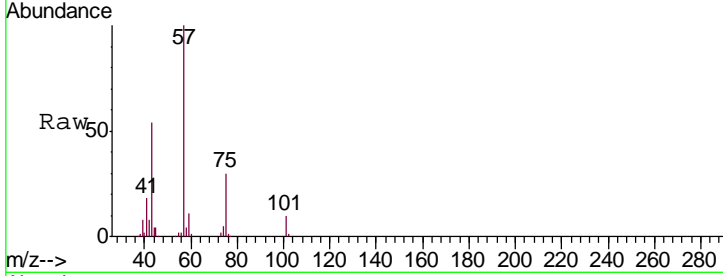




#51  
 4-Methyl-2-Pentanone  
 Concen: 7.457 ug/l  
 RT: 7.40 min Scan# 1963  
 Delta R.T. -0.04 min  
 Lab File: VU034288.D  
 Acq: 05 Sep 2019 17:05

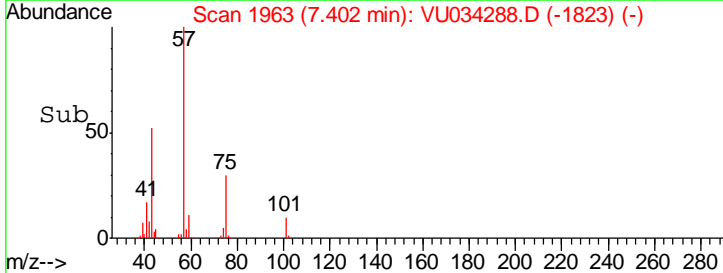
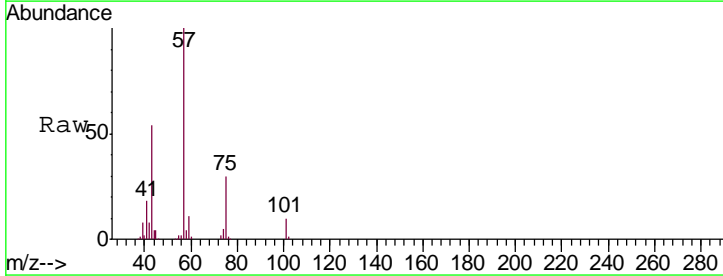
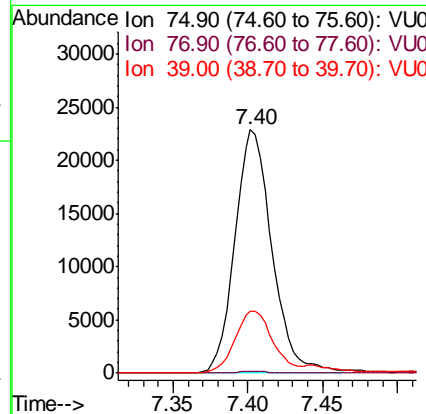
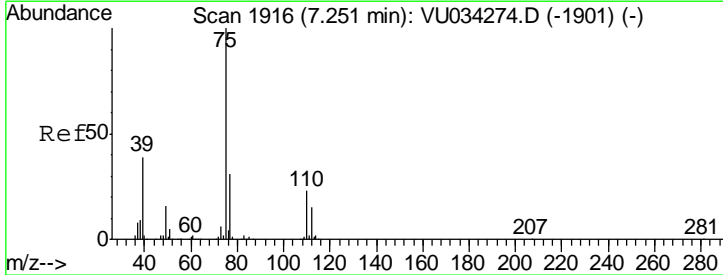
Instrument : MSVOA\_U  
 ClientSampled : PB122726TB

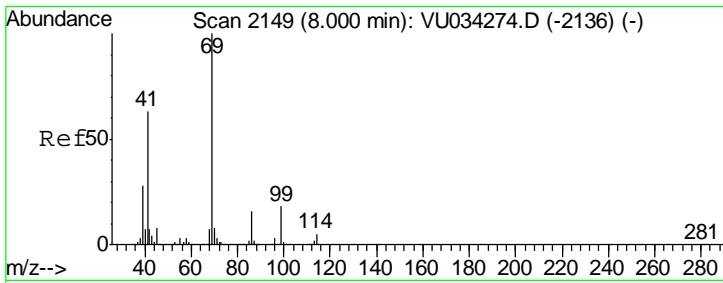
Tgt Ion	Resp	Lower	Upper
43	100		
58	6.9	33.0	49.4#



#54  
 cis-1,3-Dichloropropene  
 Concen: 3.763 ug/l  
 RT: 7.40 min Scan# 1963  
 Delta R.T. 0.15 min  
 Lab File: VU034288.D  
 Acq: 05 Sep 2019 17:05

Tgt Ion	Resp	Lower	Upper
75	100		
77	0.6	25.1	37.7#
39	25.6	31.2	46.8#

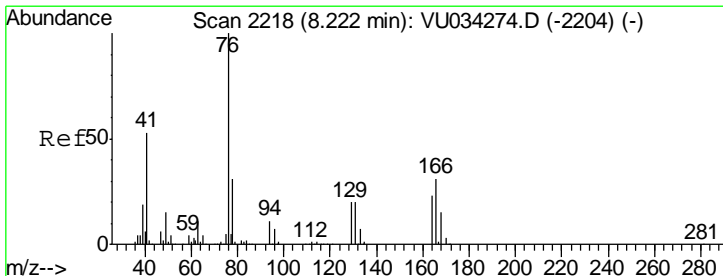
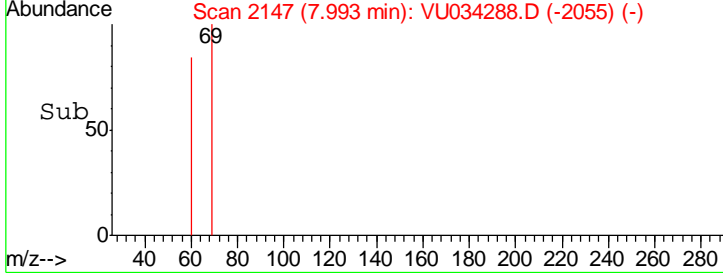
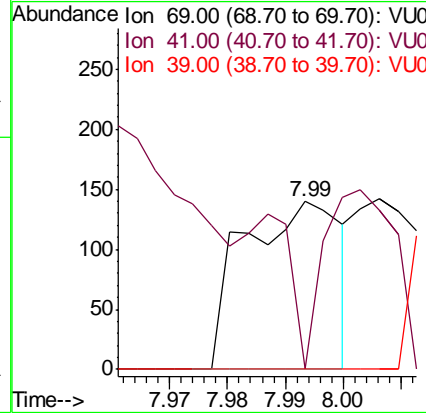
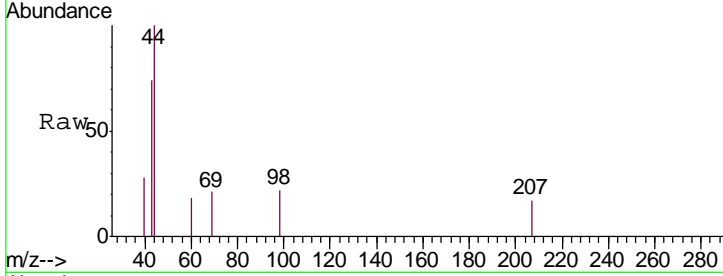




#56  
 Ethyl methacrylate  
 Concen: 3.091 ug/l  
 RT: 7.99 min Scan# 2147  
 Delta R.T. -0.01 min  
 Lab File: VU034288.D  
 Acq: 05 Sep 2019 17:05

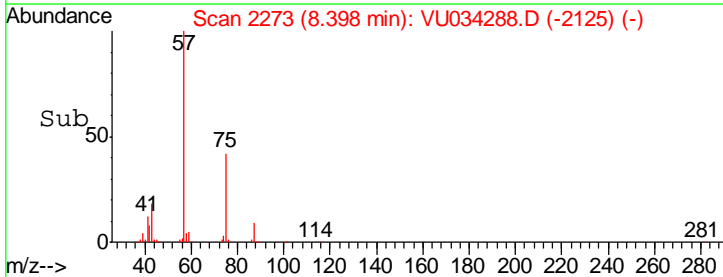
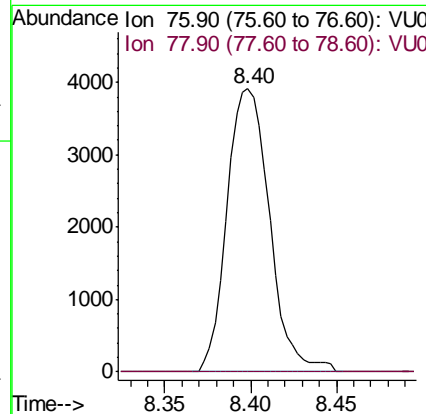
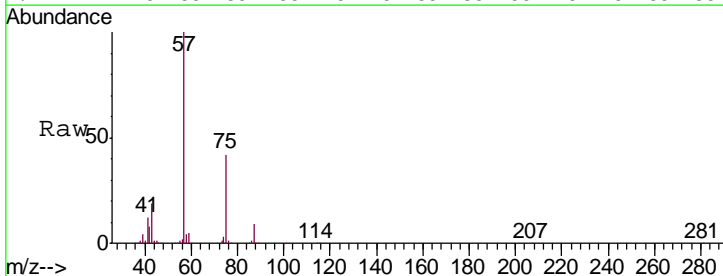
Instrument : MSVOA\_U  
 ClientSampled : PB122726TB

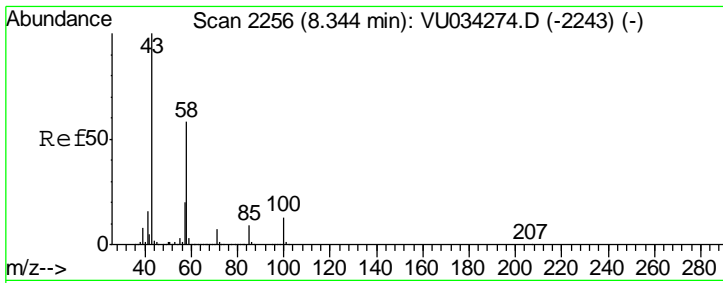
Tgt Ion	Resp	Lower	Upper
69	100		
41	0.0	49.5	74.3#
39	0.0	22.5	33.7#



#57  
 1,3-Dichloropropane  
 Concen: 0.595 ug/l  
 RT: 8.40 min Scan# 2273  
 Delta R.T. 0.18 min  
 Lab File: VU034288.D  
 Acq: 05 Sep 2019 17:05

Tgt Ion	Resp	Lower	Upper
76	100		
78	0.0	25.4	38.2#

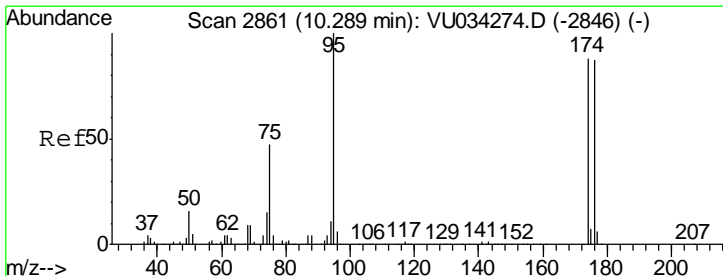
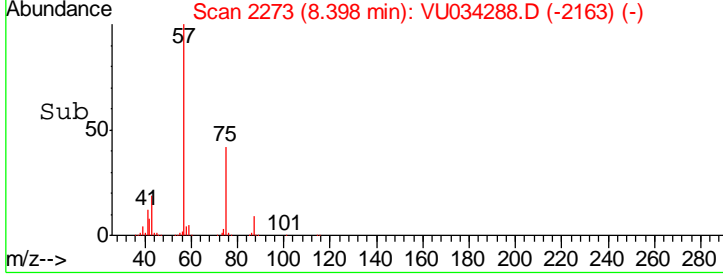
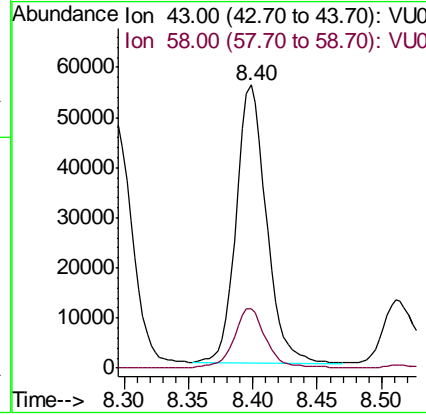
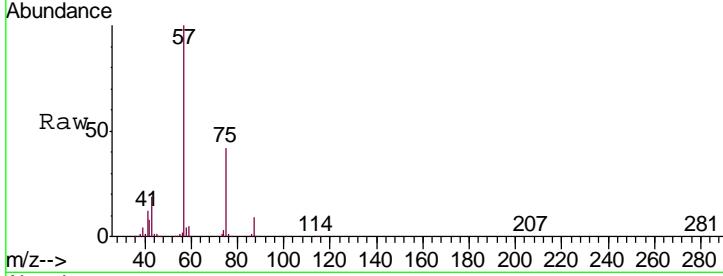




#59  
 2-Hexanone  
 Concen: 12.618 ug/l  
 RT: 8.40 min Scan# 2273  
 Delta R.T. 0.05 min  
 Lab File: VU034288.D  
 Acq: 05 Sep 2019 17:05

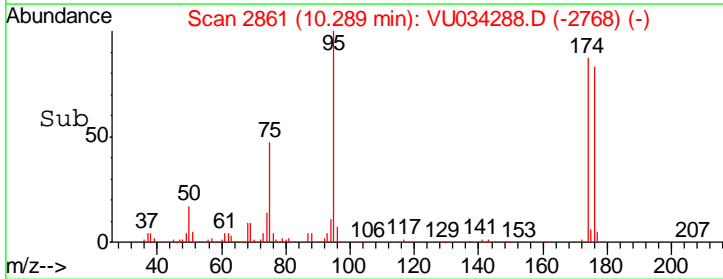
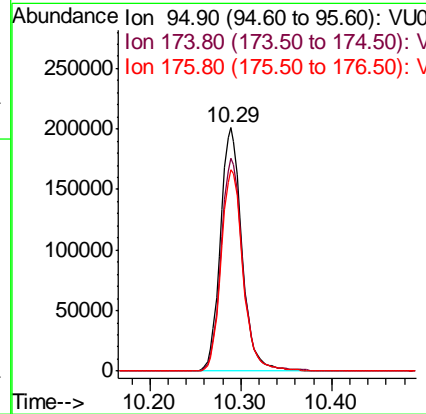
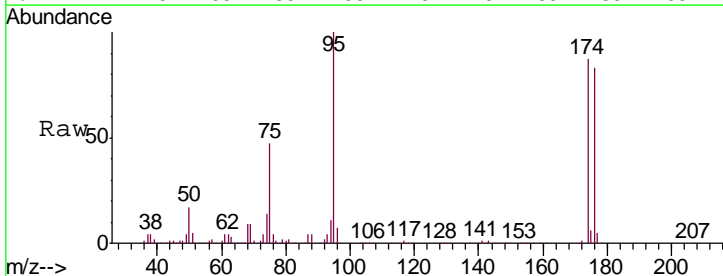
**Instrument :**  
 MSVOA\_U  
**ClientSampled :**  
 PB122726TB

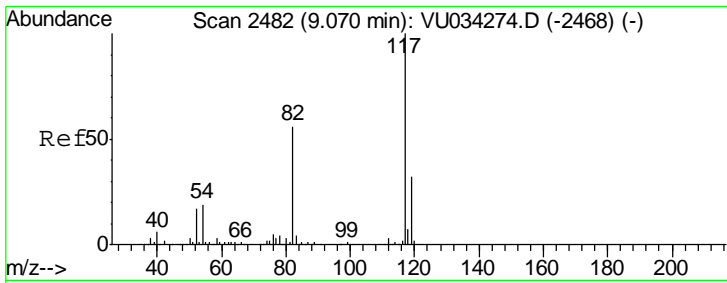
Tgt Ion	Resp	Lower	Upper
43	91085		
58	23.0	28.8	86.5#



#62  
 4-Bromofluorobenzene  
 Concen: 35.192 ug/l  
 RT: 10.29 min Scan# 2861  
 Delta R.T. 0.00 min  
 Lab File: VU034288.D  
 Acq: 05 Sep 2019 17:05

Tgt Ion	Resp	Lower	Upper
95	331494		
174	88.6	0.0	175.2
176	84.0	0.0	168.0

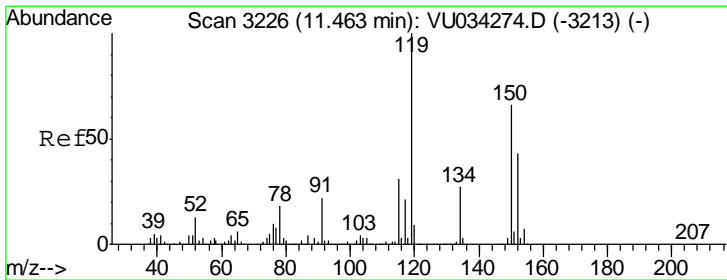
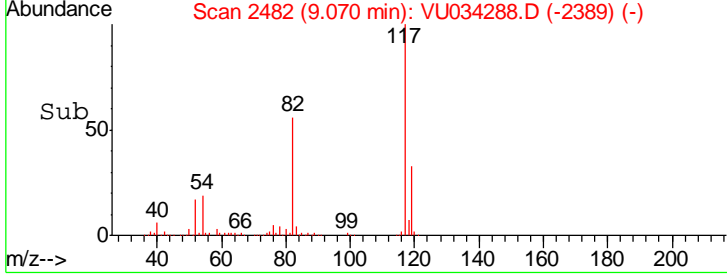
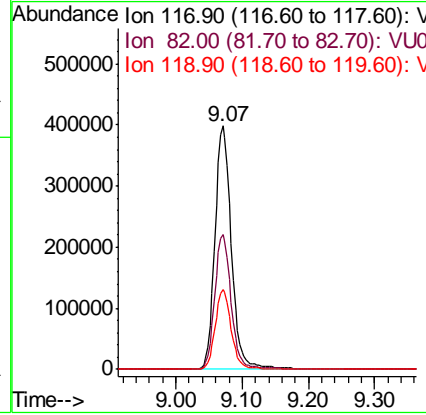
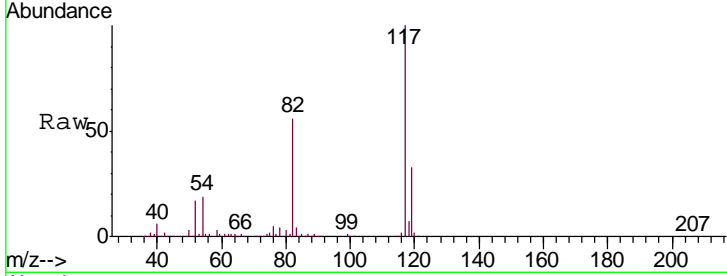




#63  
 Chlorobenzene-d5  
 Concen: 50.000 ug/l  
 RT: 9.07 min Scan# 2482  
 Delta R.T. 0.00 min  
 Lab File: VU034288.D  
 Acq: 05 Sep 2019 17:05

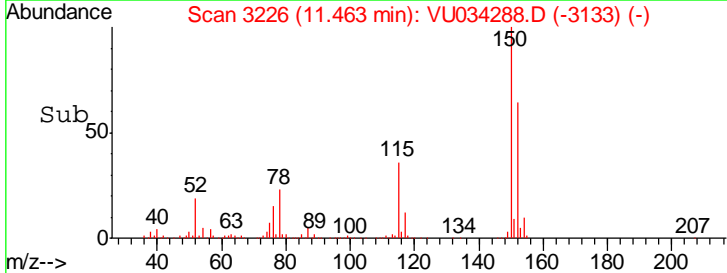
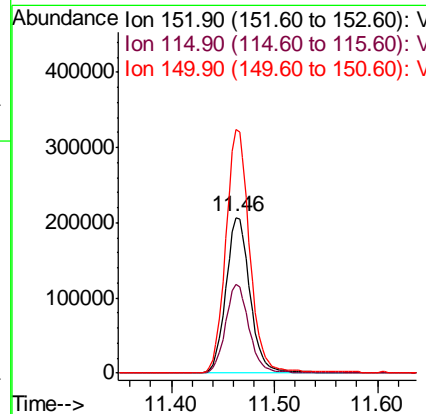
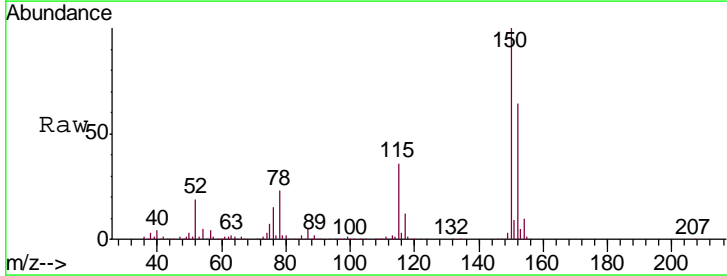
Instrument : MSVOA\_U  
 ClientSampled : PB122726TB

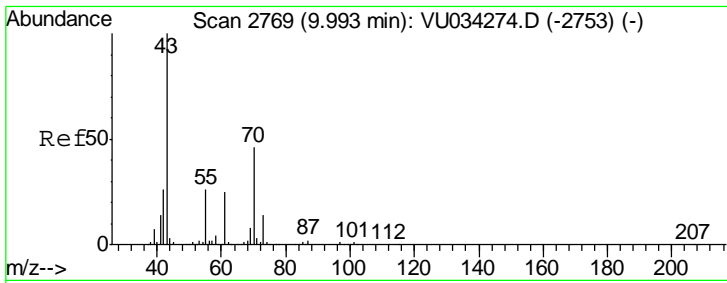
Tgt Ion	Resp	Lower	Upper
117	687868		
82	55.5	44.6	67.0
119	32.9	25.9	38.9



#72  
 1,4-Dichlorobenzene-d4  
 Concen: 50.000 ug/l  
 RT: 11.46 min Scan# 3226  
 Delta R.T. 0.00 min  
 Lab File: VU034288.D  
 Acq: 05 Sep 2019 17:05

Tgt Ion	Resp	Lower	Upper
152	336867		
115	56.0	39.1	117.3
150	155.3	0.0	345.4

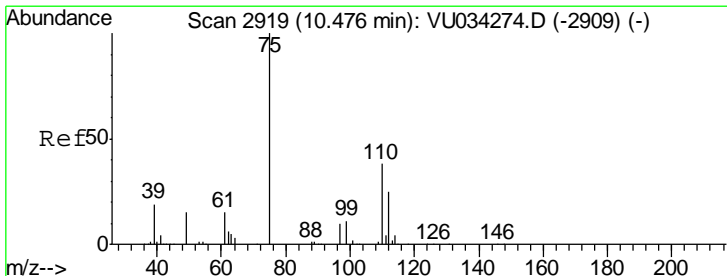
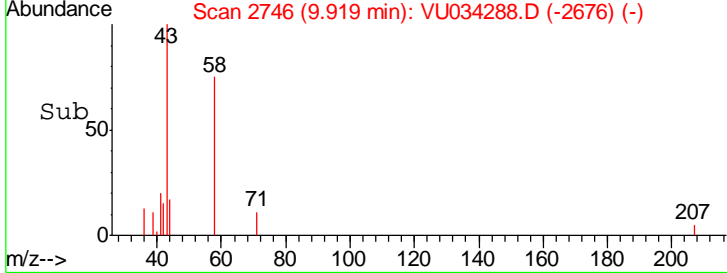
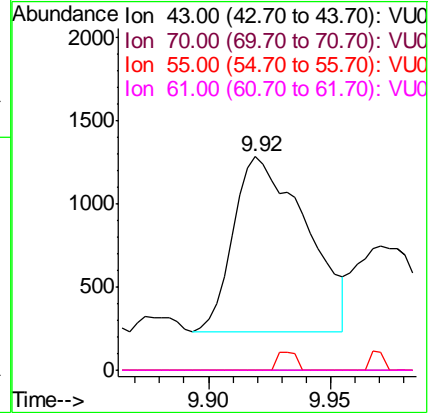
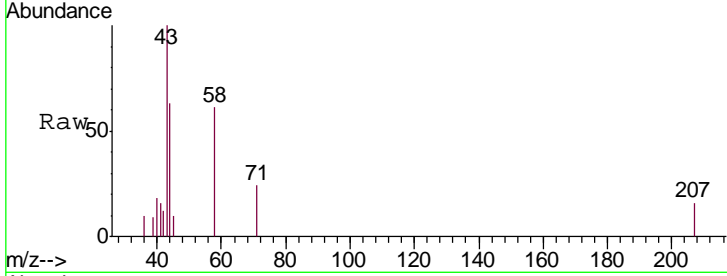




#74  
 N-amyl acetate  
 Concen: 0.248 ug/l  
 RT: 9.92 min Scan# 2746  
 Delta R.T. -0.07 min  
 Lab File: VU034288.D  
 Acq: 05 Sep 2019 17:05

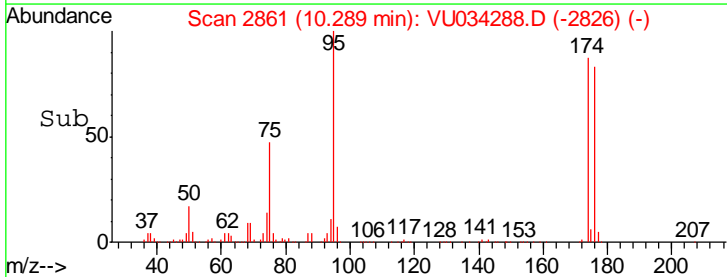
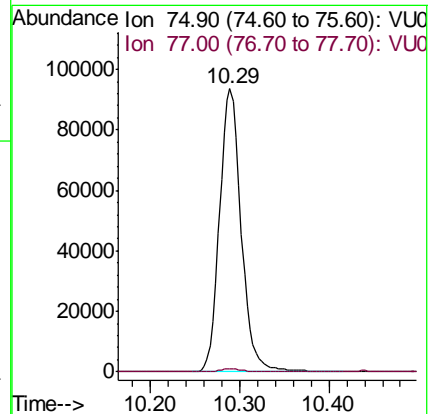
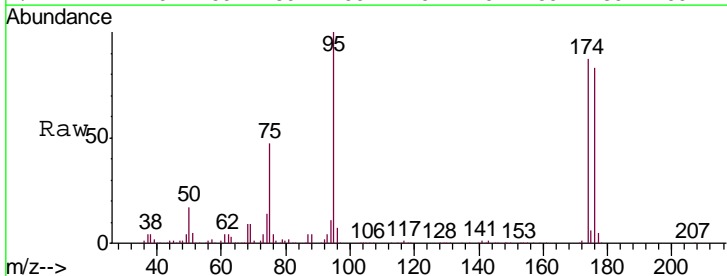
Instrument : MSVOA\_U  
 ClientSampled : PB122726TB

Tgt Ion	Resp	Lower	Upper
43	100		
70	0.0	36.4	54.6#
55	2.8	21.2	31.8#
61	0.0	20.4	30.6#

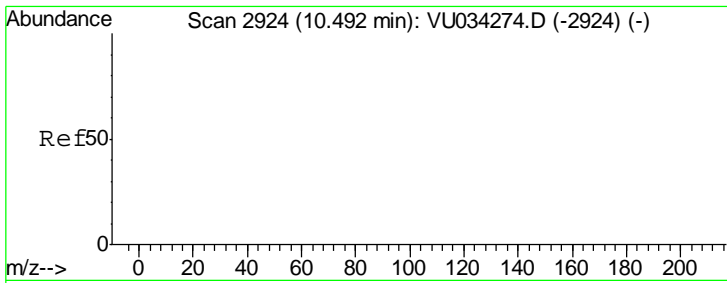


#76  
 1,2,3-Trichloropropane  
 Concen: 21.426 ug/l  
 RT: 10.29 min Scan# 2861  
 Delta R.T. -0.19 min  
 Lab File: VU034288.D  
 Acq: 05 Sep 2019 17:05

Tgt Ion	Resp	Lower	Upper
75	100		
77	1.1	20.8	62.2#



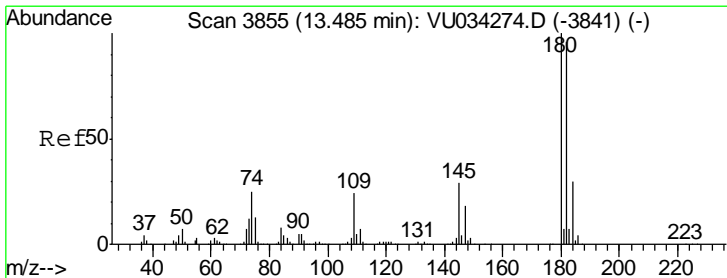
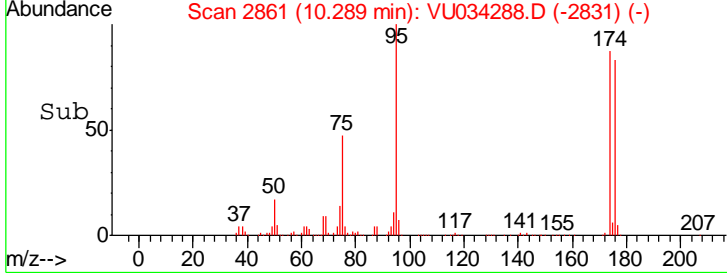
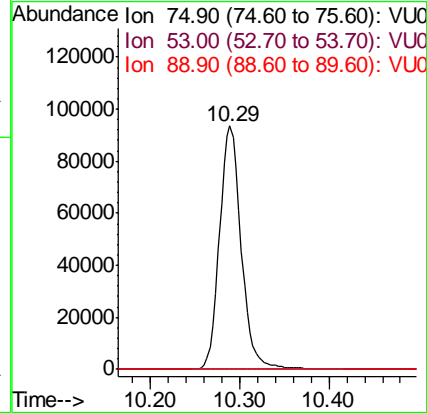
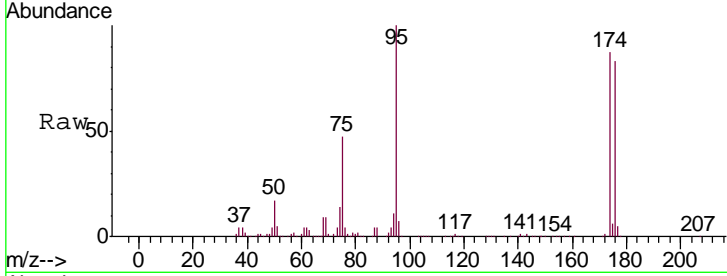




#81  
 trans-1,4-Dichloro-2-butene  
 Concen: 72.053 ug/l  
 RT: 10.29 min Scan# 2861  
 Delta R.T. -0.20 min  
 Lab File: VU034288.D  
 Acq: 05 Sep 2019 17:05

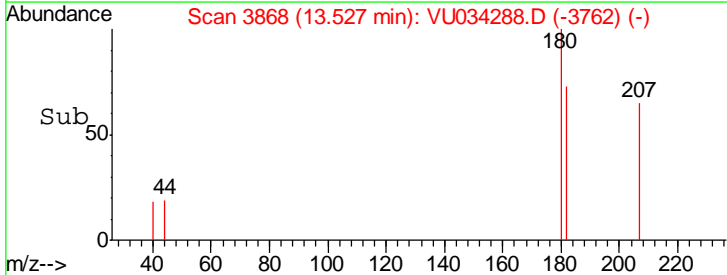
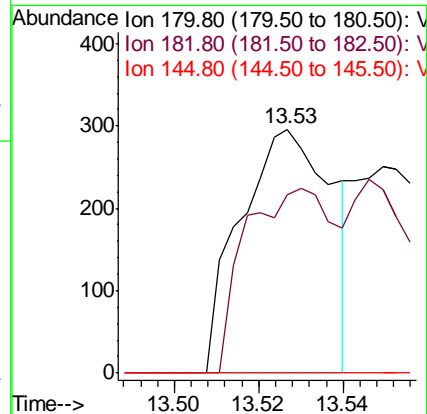
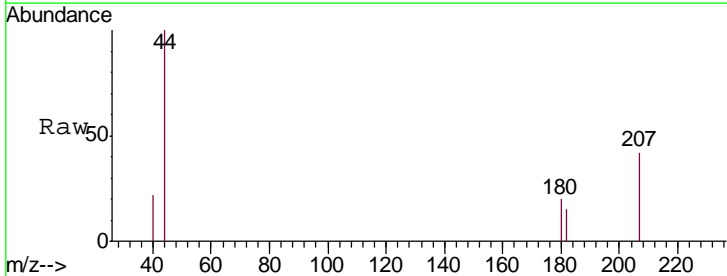
Instrument : MSVOA\_U  
 ClientSampled : PB122726TB

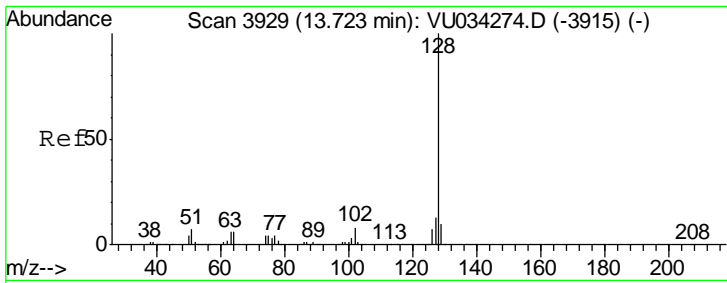
Tgt Ion	Resp	Lower	Upper
75	100		
53	0.1	0.0	0.0#
89	0.0	0.0	0.0



#93  
 1,2,4-Trichlorobenzene  
 Concen: 3.504 ug/l  
 RT: 13.53 min Scan# 3868  
 Delta R.T. 0.04 min  
 Lab File: VU034288.D  
 Acq: 05 Sep 2019 17:05

Tgt Ion	Resp	Lower	Upper
180	100		
182	74.8	47.9	143.8
145	0.0	14.4	43.0#

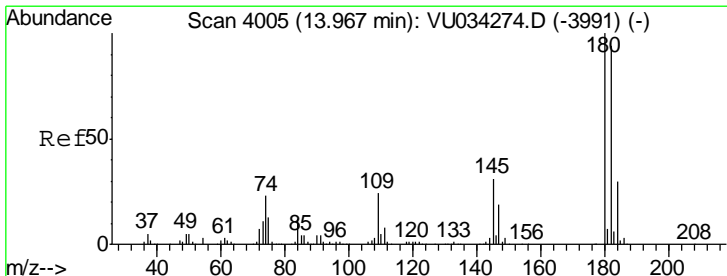
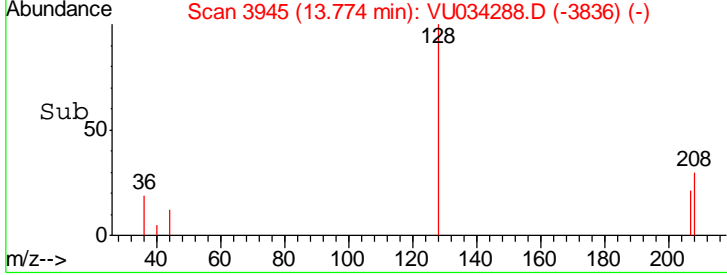
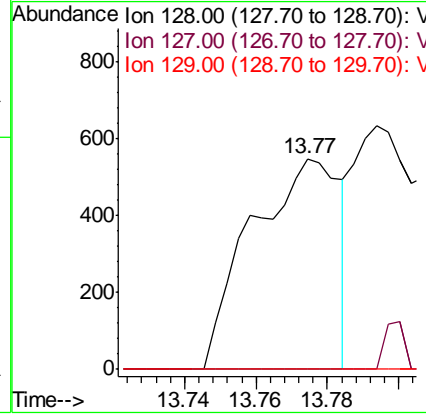
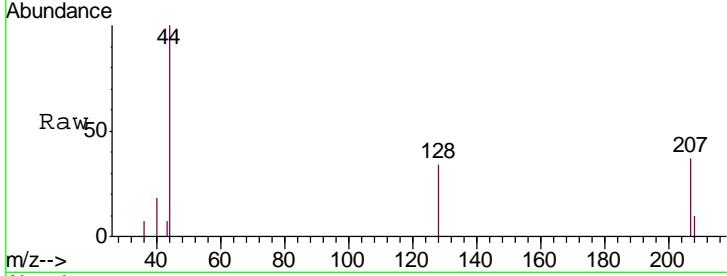




#95  
 Naphthalene  
 Concen: 4.005 ug/l  
 RT: 13.77 min Scan# 3945  
 Delta R.T. 0.05 min  
 Lab File: VU034288.D  
 Acq: 05 Sep 2019 17:05

Instrument : MSVOA\_U  
 ClientSampled : PB122726TB

Tgt Ion	Resp	Lower	Upper
128	100		
127	0.0	10.6	15.8#
129	0.0	8.4	12.6#



#96  
 1,2,3-Trichlorobenzene  
 Concen: 2.676 ug/l  
 RT: 13.99 min Scan# 4013  
 Delta R.T. 0.03 min  
 Lab File: VU034288.D  
 Acq: 05 Sep 2019 17:05

Tgt Ion	Resp	Lower	Upper
180	100		
182	115.0	48.4	145.0
145	25.8	15.4	46.4

