

Data Path : Z:\voasrv\HPCHEM1\MSVOA_U\Data\VU090622\
 Data File : VU050644.D
 Acq On : 06 Sep 2022 19:18
 Operator : SY/MD
 Sample : N4482-07
 Misc : 5.0mL/MSVOA_U/WATER
 ALS Vial : 17 Sample Multiplier: 1

Instrument :
 MSVOA_U
 ClientSampleId :
 EW364

Integration Parameters: LSCINT.P

Integrator: RTE
 Smoothing : OFF
 Sampling : 1
 Start Thrs: 0.2
 Stop Thrs : 0

Filtering: 5
 Min Area: 0 % of largest Peak
 Max Peaks: 100
 Peak Location: TOP

If leading or trailing edge < 100 prefer < Baseline drop else tangent >
 Peak separation: 5

Method : Z:\voasrv\HPCHEM1\MSVOA_U\Method\SFAMULM090222WMA.M
 Title : VOC Analysis

Signal : TIC: VU050644.D\data.ms

peak #	R.T. min	first scan	max scan	last scan	PK TY	peak height	corr. area	corr. % max.	% of total
1	1.517	51	55	59	rBV3	870	831	0.10%	0.014%
2	1.597	69	80	102	rBV	55754	72194	8.75%	1.187%
3	1.761	129	131	132	rBV	635	240	0.03%	0.004%
4	1.903	165	175	194	rVB	51603	71977	8.73%	1.184%
5	2.208	269	270	273	rBV	276	168	0.02%	0.003%
6	2.295	291	297	299	rVB4	434	392	0.05%	0.006%
7	2.317	299	304	313	rBV5	577	825	0.10%	0.014%
8	2.359	315	317	320	rBV	344	215	0.03%	0.004%
9	2.398	325	329	332	rBV2	272	228	0.03%	0.004%
10	2.456	344	347	349	rVB2	311	168	0.02%	0.003%
11	2.562	368	380	393	rBV	127120	204922	24.85%	3.370%
12	2.629	394	401	413	rVB	6493	10737	1.30%	0.177%
13	2.780	442	448	449	rBV2	790	543	0.07%	0.009%
14	2.858	467	472	475	rBV2	227	212	0.03%	0.003%
15	2.899	475	485	500	rVV3	1864	3913	0.47%	0.064%
16	3.002	509	517	519	rBV2	221	228	0.03%	0.004%
17	3.044	522	530	535	rVV	857	948	0.11%	0.016%
18	3.186	566	574	582	rBV3	1568	2863	0.35%	0.047%
19	3.295	604	608	610	rBV	312	233	0.03%	0.004%
20	3.449	651	656	658	rBV2	207	225	0.03%	0.004%
21	3.703	733	735	739	rVB2	232	174	0.02%	0.003%
22	3.732	739	744	746	rBV	241	237	0.03%	0.004%
23	3.780	752	759	765	rVB2	246	320	0.04%	0.005%
24	3.816	765	770	772	rBV	181	194	0.02%	0.003%
25	4.012	828	831	836	rVB	294	260	0.03%	0.004%
26	4.044	836	841	844	rBV2	218	204	0.02%	0.003%
27	4.092	852	856	859	rBV2	296	207	0.03%	0.003%
28	4.144	868	872	873	rBV	230	168	0.02%	0.003%
29	4.626	1009	1022	1055	rBV	78055	228287	27.68%	3.754%
30	4.825	1081	1084	1088	rVB3	256	190	0.02%	0.003%
31	4.864	1093	1096	1101	rVB2	383	314	0.04%	0.005%
32	4.983	1131	1133	1137	rVB2	236	178	0.02%	0.003%
33	5.060	1141	1157	1177	rBV	154294	342385	41.51%	5.631%
34	5.166	1187	1190	1197	rVB3	477	537	0.07%	0.009%
35	5.202	1197	1201	1203	rBV2	322	288	0.03%	0.005%
36	5.295	1222	1230	1236	rBV3	647	1047	0.13%	0.017%

Data Path : Z:\voasrv\HPCHEM1\MSVOA_U\Data\VU090622\
 Data File : VU050644.D
 Acq On : 06 Sep 2022 19:18
 Operator : SY/MD
 Sample : N4482-07
 Misc : 5.0mL/MSVOA_U/WATER
 ALS Vial : 17 Sample Multiplier: 1

Instrument :
 MSVOA_U
 ClientSampleId :
 EW364

Integration Parameters: LSCINT.P

Integrator: RTE
 Smoothing : OFF
 Sampling : 1
 Start Thrs: 0.2
 Stop Thrs : 0

Filtering: 5
 Min Area: 0 % of largest Peak
 Max Peaks: 100
 Peak Location: TOP

If leading or trailing edge < 100 prefer < Baseline drop else tangent >
 Peak separation: 5

Method : Z:\voasrv\HPCHEM1\MSVOA_U\Method\SFAMULM090222WMA.M
 Title : VOC Analysis

37	5.369	1250	1253	1257	rVB2	350	294	0.04%	0.005%
38	5.722	1342	1363	1393	rBV2	298232	824778	100.00%	13.564%
39	5.941	1430	1431	1436	rVB2	311	213	0.03%	0.004%
40	5.989	1439	1446	1448	rBV2	268	307	0.04%	0.005%
41	6.179	1499	1505	1511	rVB2	178	240	0.03%	0.004%
42	6.250	1511	1527	1549	rBV	253062	484961	58.80%	7.976%
43	6.581	1627	1630	1636	rVB3	327	247	0.03%	0.004%
44	6.690	1650	1664	1685	rBV	202649	389313	47.20%	6.403%
45	6.902	1727	1730	1733	rVB2	295	183	0.02%	0.003%
46	7.111	1793	1795	1801	rVB3	283	169	0.02%	0.003%
47	7.176	1805	1815	1816	rBV4	1124	1563	0.19%	0.026%
48	7.365	1872	1874	1881	rVV	277	226	0.03%	0.004%
49	7.465	1902	1905	1913	rVB2	215	177	0.02%	0.003%
50	7.510	1916	1919	1922	rVB2	303	177	0.02%	0.003%
51	7.565	1924	1936	1955	rBV	102685	178987	21.70%	2.944%
52	7.793	2002	2007	2009	rBV2	517	377	0.05%	0.006%
53	7.809	2009	2012	2017	rVB2	599	493	0.06%	0.008%
54	7.899	2026	2040	2058	rBV	328854	575288	69.75%	9.461%
55	8.179	2116	2127	2145	rBV	69070	117480	14.24%	1.932%
56	8.398	2192	2195	2202	rVB2	421	394	0.05%	0.006%
57	8.472	2213	2218	2221	rVB3	273	233	0.03%	0.004%
58	8.552	2239	2243	2247	rBV3	733	701	0.08%	0.012%
59	8.635	2257	2269	2279	rBV3	161449	344864	41.81%	5.672%
60	8.896	2347	2350	2353	rVB2	265	171	0.02%	0.003%
61	8.954	2362	2368	2371	rBV2	230	309	0.04%	0.005%
62	9.195	2436	2443	2452	rBV2	319	553	0.07%	0.009%
63	9.372	2492	2498	2499	rBV	272	228	0.03%	0.004%
64	9.417	2499	2512	2535	rVV	357414	602768	73.08%	9.913%
65	9.574	2553	2561	2567	rVB4	803	1051	0.13%	0.017%
66	9.626	2573	2577	2581	rBV	269	322	0.04%	0.005%
67	9.693	2588	2598	2607	rBV4	862	1542	0.19%	0.025%
68	9.806	2630	2633	2639	rVB2	265	238	0.03%	0.004%
69	10.115	2726	2729	2734	rVB4	914	866	0.10%	0.014%
70	10.172	2743	2747	2751	rBV	204	201	0.02%	0.003%
71	10.269	2771	2777	2783	rVB2	344	449	0.05%	0.007%
72	10.298	2783	2786	2790	rBV2	273	263	0.03%	0.004%
73	10.471	2837	2840	2842	rBV	289	212	0.03%	0.003%
74	10.584	2872	2875	2880	rBV2	271	324	0.04%	0.005%
75	10.754	2915	2928	2949	rBV	315549	512036	62.08%	8.421%
76	10.899	2968	2973	2976	rBV2	272	244	0.03%	0.004%

Data Path : Z:\voasrv\HPCHEM1\MSVOA_U\Data\VU090622\
 Data File : VU050644.D
 Acq On : 06 Sep 2022 19:18
 Operator : SY/MD
 Sample : N4482-07
 Misc : 5.0mL/MSVOA_U/WATER
 ALS Vial : 17 Sample Multiplier: 1

Instrument :
 MSVOA_U
 ClientSampleId :
 EW364

Integration Parameters: LSCINT.P

Integrator: RTE
 Smoothing : OFF
 Sampling : 1
 Start Thrs : 0.2
 Stop Thrs : 0

Filtering: 5
 Min Area: 0 % of largest Peak
 Max Peaks: 100
 Peak Location: TOP

If leading or trailing edge < 100 prefer < Baseline drop else tangent >
 Peak separation: 5

Method : Z:\voasrv\HPCHEM1\MSVOA_U\Method\SFAMULM090222WMA.M
 Title : VOC Analysis

77	10.960	2987	2992	2995	rBV2	198	205	0.02%	0.003%
78	11.086	3027	3031	3043	rVB4	899	1310	0.16%	0.022%
79	11.150	3043	3051	3054	rBV2	295	446	0.05%	0.007%
80	11.298	3090	3097	3100	rBV2	198	289	0.04%	0.005%
81	11.349	3110	3113	3117	rBV	203	178	0.02%	0.003%
82	11.378	3118	3122	3127	rVB	308	306	0.04%	0.005%
83	11.468	3145	3150	3156	rBV	970	1181	0.14%	0.019%
84	11.558	3174	3178	3183	rVB2	214	207	0.03%	0.003%
85	11.748	3231	3237	3244	rBV4	1408	1786	0.22%	0.029%
86	11.812	3244	3257	3273	rBV	290494	469553	56.93%	7.722%
87	12.063	3321	3335	3349	rBV2	30314	55096	6.68%	0.906%
88	12.192	3363	3375	3394	rBV	321518	527813	63.99%	8.681%
89	12.291	3403	3406	3408	rBV2	541	311	0.04%	0.005%
90	12.330	3416	3418	3424	rBV2	338	193	0.02%	0.003%
91	12.526	3476	3479	3481	rBV2	308	214	0.03%	0.004%
92	12.741	3544	3546	3549	rVB	322	171	0.02%	0.003%
93	13.221	3689	3695	3707	rVB6	2392	3865	0.47%	0.064%
94	13.597	3810	3812	3816	rBV	202	183	0.02%	0.003%
95	13.844	3882	3889	3901	rVB7	3967	5889	0.71%	0.097%
96	14.050	3951	3953	3955	rBV2	358	215	0.03%	0.004%
97	14.092	3958	3966	3978	rVB	7143	12112	1.47%	0.199%
98	14.291	4022	4028	4031	rBV2	349	393	0.05%	0.006%
99	14.333	4032	4041	4051	rVV3	4764	7565	0.92%	0.124%
100	15.458	4388	4391	4394	rBV3	519	462	0.06%	0.008%

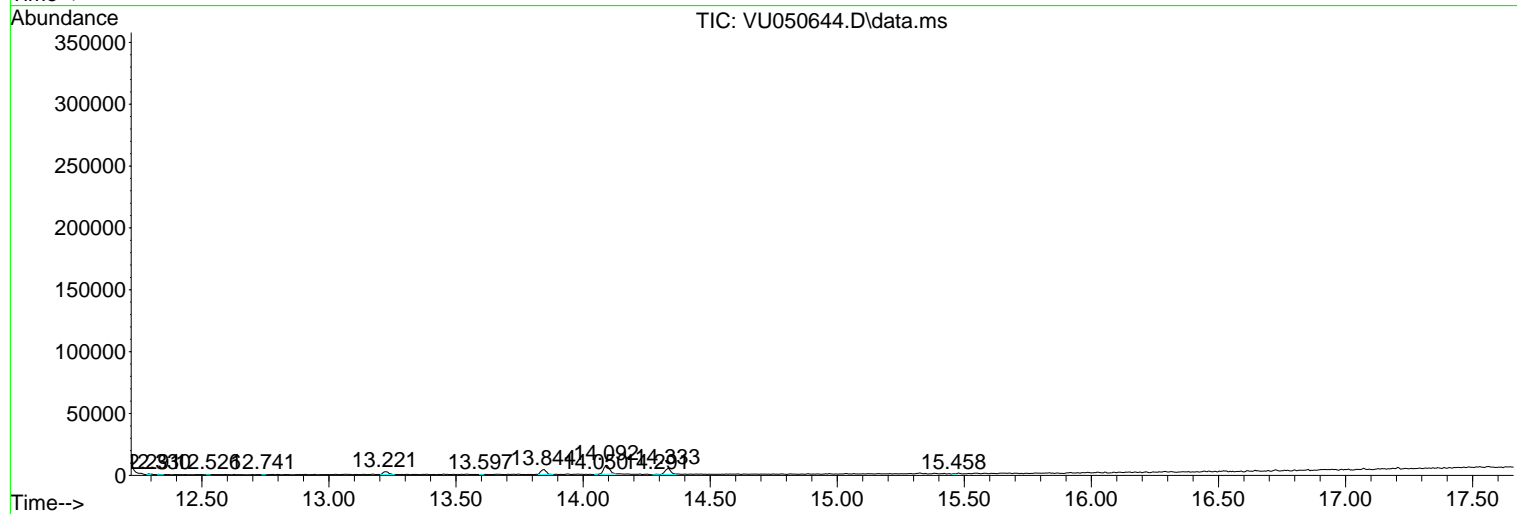
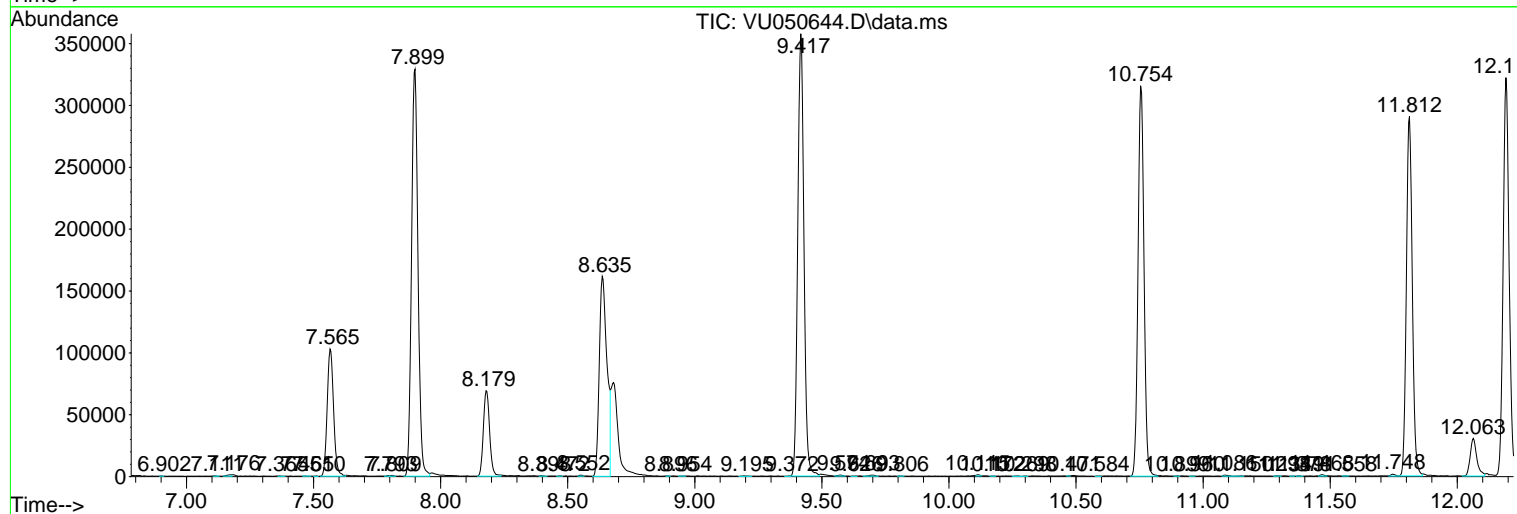
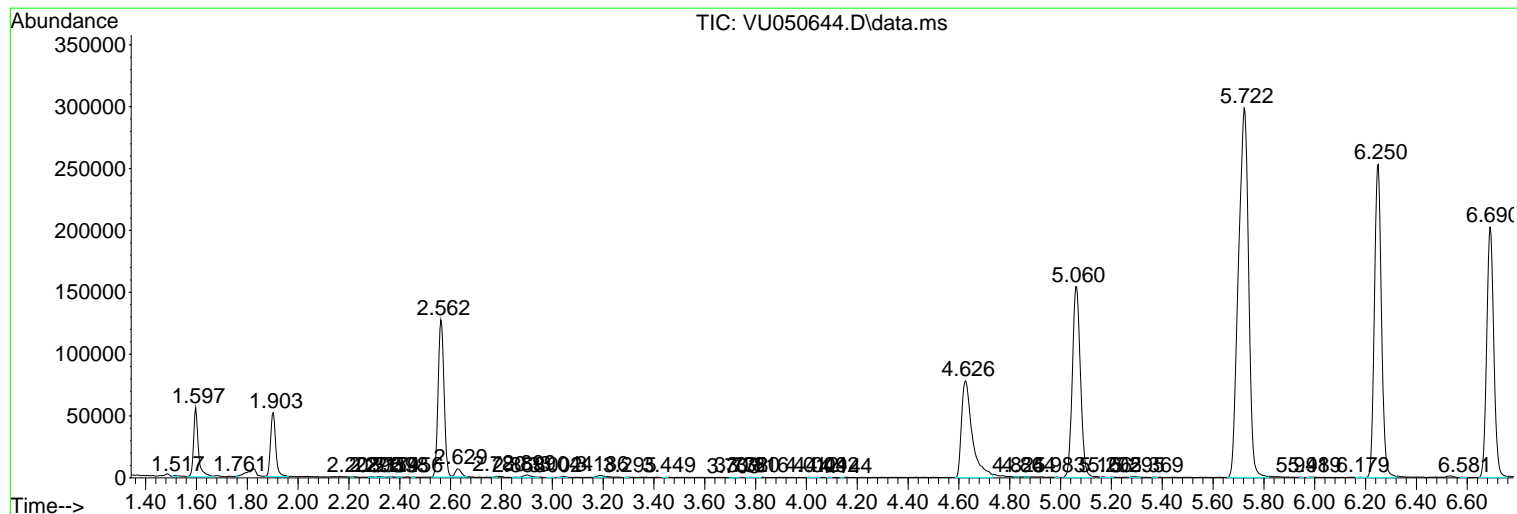
Sum of corrected areas: 6080437

Data Path : Z:\voasrv\HPCHEM1\MSVOA_U\Data\VU090622\
Data File : VU050644.D
Acq On : 06 Sep 2022 19:18
Operator : SY/MD
Sample : N4482-07
Misc : 5.0mL/MSVOA_U/WATER
ALS Vial : 17 Sample Multiplier: 1

Instrument :
MSVOA_U
ClientSampleId :
EW364

Quant Method : Z:\voasrv\HPCHEM1\MSVOA_U\Method\SFAMULM090222WMA.M
Quant Title : VOC Analysis

TIC Library : C:\Database\NIST20.L
TIC Integration Parameters: LSCINT.P



Data Path : Z:\voasrv\HPCHEM1\MSVOA_U\Data\VU090622\
 Data File : VU050644.D
 Acq On : 06 Sep 2022 19:18
 Operator : SY/MD
 Sample : N4482-07
 Misc : 5.0mL/MSVOA_U/WATER
 ALS Vial : 17 Sample Multiplier: 1

Instrument :
 MSVOA_U
 ClientSampleId :
 EW364

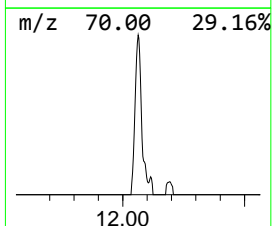
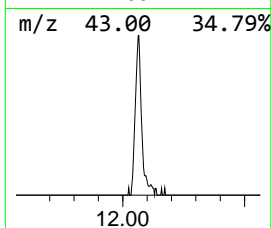
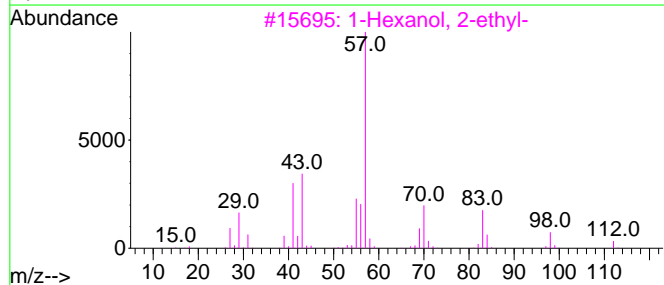
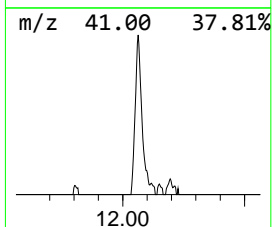
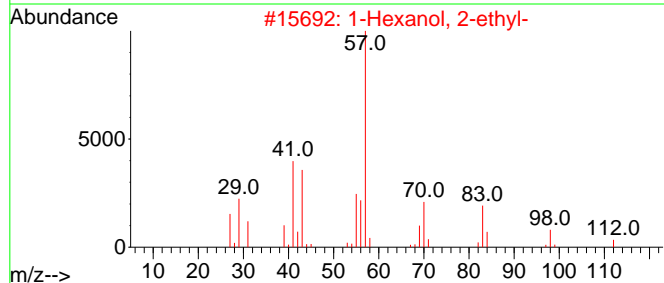
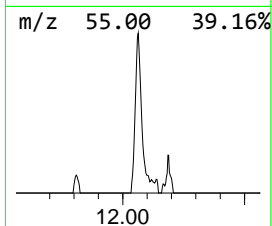
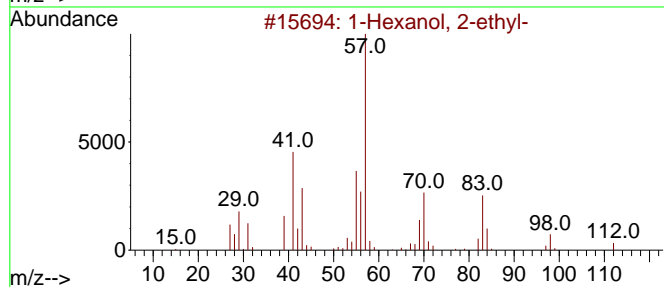
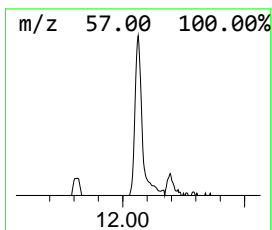
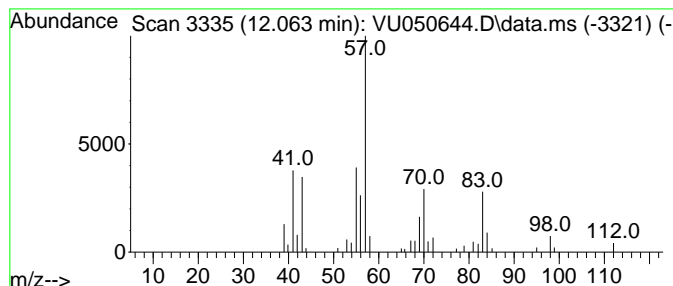
Quant Method : Z:\voasrv\HPCHEM1\MSVOA_U\Method\SFAMULM090222WMA.M
 Quant Title : VOC Analysis

TIC Library : C:\Database\NIST20.L
 TIC Integration Parameters: LSCINT.P

 Peak Number 2 1-Hexanol, 2-ethyl- Concentration Rank 2

R.T.	EstConc	Area	Relative to ISTD	R.T.
12.063	5.87 ug/L	55096	1,4-Dichlorobenzene-d4	11.812

Hit#	of 5	Tentative ID	MW	MolForm	CAS#	Qual
1		1-Hexanol, 2-ethyl-	130	C8H18O	000104-76-7	78
2		1-Hexanol, 2-ethyl-	130	C8H18O	000104-76-7	64
3		1-Hexanol, 2-ethyl-	130	C8H18O	000104-76-7	64
4		1-Hexanol, 2-ethyl-	130	C8H18O	000104-76-7	59
5		1-Hexanol, 2-ethyl-	130	C8H18O	000104-76-7	59



Data Path : Z:\voasrv\HPCHEM1\MSVOA_U\Data\VU090622\
Data File : VU050644.D
Acq On : 06 Sep 2022 19:18
Operator : SY/MD
Sample : N4482-07
Misc : 5.0mL/MSVOA_U/WATER
ALS Vial : 17 Sample Multiplier: 1

Instrument :
MSVOA_U
ClientSampleId :
EW364

Quant Method : Z:\voasrv\HPCHEM1\MSVOA_U\Method\SFAMULM090222WMA.M
Quant Title : VOC Analysis

TIC Library : C:\Database\NIST20.L
TIC Integration Parameters: LSCINT.P

TIC Top Hit name	RT	EstConc	Units	Response	--Internal Standard--			
					#	RT	Resp	Conc
1-Hexanol, 2-et...	12.063	5.9	ug/L	55096	3	11.812	469553	50.0