

Data Path : Z:\VOASRV\HPCHEM1\MSVOA U\DATA\VU091018\
 Data File : VU026644.D
 Acq On : 10 Sep 2018 12:34
 Operator : MD/SY
 Sample : J4765-06
 Misc : 5.0mL/MSVOA U/WATER
 ALS Vial : 12 Sample Multiplier: 1

Instrument :
 MSVOA_U
 ClientSampled :
 VHBLK02

Integration Parameters: LSCINT.P

Integrator: RTE
 Smoothing : OFF
 Sampling : 1
 Start Thrs: 0.2
 Stop Thrs : 0

Filtering: 5
 Min Area: 0 % of largest Peak
 Max Peaks: 100
 Peak Location: TOP

If leading or trailing edge < 100 prefer < Baseline drop else tangent >
 Peak separation: 5

Method : Z:\VOASRV\HPCHEM1\MSVOA_U\METHOD\SOMULM091018WMA.M
 Title : VOC Analysis

Signal : TIC

peak #	R.T. min	first scan	max scan	last scan	PK TY	peak height	corr. area	corr. % max.	% of total
1	1.398	63	70	87	rVB	92166	94209	14.05%	1.886%
2	1.681	149	158	173	rBV	72422	94912	14.15%	1.900%
3	2.041	268	270	273	rBV	450	279	0.04%	0.006%
4	2.189	313	316	322	rVB2	1793	1885	0.28%	0.038%
5	2.273	331	342	356	rBV	151483	226991	33.85%	4.545%
6	2.475	401	405	414	rVB2	669	1001	0.15%	0.020%
7	2.569	431	434	437	rBV	168	122	0.02%	0.002%
8	2.611	443	447	450	rBV	214	220	0.03%	0.004%
9	2.704	471	476	481	rVB2	424	458	0.07%	0.009%
10	2.762	492	494	498	rVB	198	100	0.01%	0.002%
11	2.842	508	519	530	rVB	2368	4911	0.73%	0.098%
12	2.955	552	554	558	rVB	126	73	0.01%	0.001%
13	3.260	647	649	652	rBV	78	41	0.01%	0.001%
14	3.395	690	691	693	rVB	113	41	0.01%	0.001%
15	3.636	763	766	769	rBV	107	81	0.01%	0.002%
16	3.717	787	791	794	rBV	133	116	0.02%	0.002%
17	3.784	809	812	814	rBB	91	45	0.01%	0.001%
18	3.839	826	829	831	rBV	91	60	0.01%	0.001%
19	4.019	881	885	886	rBV	151	131	0.02%	0.003%
20	4.045	891	893	896	rBB	116	84	0.01%	0.002%
21	4.057	896	897	899	rBB	104	40	0.01%	0.001%
22	4.073	899	902	906	rBV	220	230	0.03%	0.005%
23	4.176	919	934	969	rBV	59890	156623	23.36%	3.136%
24	4.395	1000	1002	1004	rVV3	165	72	0.01%	0.001%
25	4.414	1006	1008	1011	rVB	225	125	0.02%	0.003%
26	4.652	1064	1082	1108	rBV	111932	262339	39.12%	5.252%
27	4.742	1108	1110	1112	rBV	147	67	0.01%	0.001%
28	4.887	1152	1155	1159	rBV3	348	318	0.05%	0.006%
29	4.987	1183	1186	1189	rBV	214	158	0.02%	0.003%
30	5.022	1192	1197	1202	rBV	88	100	0.01%	0.002%
31	5.102	1217	1222	1227	rBV	164	271	0.04%	0.005%
32	5.344	1271	1297	1324	rBV2	225582	670557	100.00%	13.425%
33	5.520	1350	1352	1354	rVB	170	73	0.01%	0.001%
34	5.581	1368	1371	1376	rVV	91	56	0.01%	0.001%

Data Path : Z:\VOASRV\HPCHEM1\MSVOA U\DATA\VU091018\
 Data File : VU026644.D
 Acq On : 10 Sep 2018 12:34
 Operator : MD/SY
 Sample : J4765-06
 Misc : 5.0mL/MSVOA U/WATER
 ALS Vial : 12 Sample Multiplier: 1

Instrument :
 MSVOA_U
 ClientSampleId :
 VHBLK02

Integration Parameters: LSCINT.P

Integrator: RTE
 Smoothing : OFF
 Sampling : 1
 Start Thrs: 0.2
 Stop Thrs : 0

Filtering: 5
 Min Area: 0 % of largest Peak
 Max Peaks: 100
 Peak Location: TOP

If leading or trailing edge < 100 prefer < Baseline drop else tangent >
 Peak separation: 5

Method : Z:\VOASRV\HPCHEM1\MSVOA_U\METHOD\SOMULM091018WMA.M
 Title : VOC Analysis

35	5.675	1397	1400	1401	rBV	137	80	0.01%	0.002%
36	5.890	1452	1467	1497	rVB	210455	407685	60.80%	8.162%
37	5.993	1497	1499	1500	rBV	252	107	0.02%	0.002%
38	6.048	1514	1516	1522	rVB	151	72	0.01%	0.001%
39	6.122	1536	1539	1543	rVB	89	54	0.01%	0.001%
40	6.183	1556	1558	1561	rVB	90	52	0.01%	0.001%
41	6.202	1562	1564	1567	rBV	71	48	0.01%	0.001%
42	6.218	1567	1569	1575	rBV	310	371	0.06%	0.007%
43	6.334	1591	1605	1626	rBV	157011	312085	46.54%	6.248%
44	6.430	1632	1635	1639	rVB	164	104	0.02%	0.002%
45	6.456	1640	1643	1644	rBV	186	103	0.02%	0.002%
46	6.517	1660	1662	1664	rVB	106	44	0.01%	0.001%
47	6.604	1686	1689	1695	rBV	138	152	0.02%	0.003%
48	6.803	1748	1751	1755	rVB	182	99	0.01%	0.002%
49	6.900	1779	1781	1784	rBV	71	43	0.01%	0.001%
50	6.935	1789	1792	1793	rBV	149	61	0.01%	0.001%
51	6.970	1799	1803	1804	rBV	83	60	0.01%	0.001%
52	6.999	1810	1812	1815	rVB	146	80	0.01%	0.002%
53	7.038	1822	1824	1827	rBV	72	42	0.01%	0.001%
54	7.102	1841	1844	1849	rBV	84	82	0.01%	0.002%
55	7.231	1872	1884	1902	rBV	88302	153267	22.86%	3.069%
56	7.356	1918	1923	1928	rVV2	174	204	0.03%	0.004%
57	7.466	1951	1957	1960	rVB2	167	190	0.03%	0.004%
58	7.569	1975	1989	2008	rBV	293135	507759	75.72%	10.166%
59	7.851	2065	2077	2093	rBV	61532	102770	15.33%	2.058%
60	7.951	2106	2108	2110	rBV	116	47	0.01%	0.001%
61	7.980	2115	2117	2120	rVB	122	48	0.01%	0.001%
62	8.038	2134	2135	2139	rBV	126	60	0.01%	0.001%
63	8.179	2167	2179	2190	rBV2	4448	10869	1.62%	0.218%
64	8.311	2209	2220	2247	rVB	190615	318682	47.52%	6.380%
65	8.501	2276	2279	2280	rBV	153	67	0.01%	0.001%
66	8.511	2280	2282	2284	rVV	150	87	0.01%	0.002%
67	8.527	2284	2287	2296	rVB2	285	307	0.05%	0.006%
68	8.620	2308	2316	2328	rVB2	1457	2552	0.38%	0.051%
69	8.745	2353	2355	2359	rVB	166	91	0.01%	0.002%
70	9.093	2450	2463	2487	rBV	296583	483946	72.17%	9.689%
71	9.218	2500	2502	2506	rBV	160	66	0.01%	0.001%

Data Path : Z:\VOASRV\HPCHEM1\MSVOA U\DATA\VU091018\
 Data File : VU026644.D
 Acq On : 10 Sep 2018 12:34
 Operator : MD/SY
 Sample : J4765-06
 Misc : 5.0mL/MSVOA U/WATER
 ALS Vial : 12 Sample Multiplier: 1

Instrument :
 MSVOA_U
 ClientSampleId :
 VHBLK02

Integration Parameters: LSCINT.P

Integrator: RTE
 Smoothing : OFF
 Sampling : 1
 Start Thrs: 0.2
 Stop Thrs : 0

Filtering: 5
 Min Area: 0 % of largest Peak
 Max Peaks: 100
 Peak Location: TOP

If leading or trailing edge < 100 prefer < Baseline drop else tangent >
 Peak separation: 5

Method : Z:\VOASRV\HPCHEM1\MSVOA_U\METHOD\SOMULM091018WMA.M
 Title : VOC Analysis

72	9.250	2509	2512	2516	rVV2	207	152	0.02%	0.003%
73	9.382	2551	2553	2555	rVB2	172	90	0.01%	0.002%
74	9.546	2602	2604	2609	rVB	179	164	0.02%	0.003%
75	9.662	2638	2640	2641	rBV	136	61	0.01%	0.001%
76	9.745	2664	2666	2668	rBV	114	58	0.01%	0.001%
77	9.787	2677	2679	2682	rVB2	149	83	0.01%	0.002%
78	10.433	2867	2880	2901	rBV	208405	329665	49.16%	6.600%
79	10.613	2927	2936	2946	rBV3	1325	2466	0.37%	0.049%
80	10.813	2994	2998	3002	rBV	158	147	0.02%	0.003%
81	10.867	3013	3015	3019	rVB2	196	119	0.02%	0.002%
82	11.202	3117	3119	3122	rVB	216	96	0.01%	0.002%
83	11.289	3144	3146	3149	rBV	131	77	0.01%	0.002%
84	11.485	3195	3207	3223	rBV	257772	402277	59.99%	8.054%
85	11.626	3248	3251	3256	rBV	212	125	0.02%	0.003%
86	11.716	3277	3279	3282	rVB	168	74	0.01%	0.001%
87	11.732	3282	3284	3287	rBV	137	83	0.01%	0.002%
88	11.861	3311	3324	3349	rBV	274926	437572	65.26%	8.761%
89	12.012	3367	3371	3375	rVB2	270	257	0.04%	0.005%
90	12.031	3375	3377	3383	rBV	222	201	0.03%	0.004%
91	12.472	3511	3514	3516	rBV2	341	273	0.04%	0.005%
92	12.854	3629	3633	3636	rBV2	288	205	0.03%	0.004%
93	12.896	3642	3646	3650	rVB2	367	248	0.04%	0.005%
94	13.137	3719	3721	3722	rBV2	161	56	0.01%	0.001%
95	13.189	3734	3737	3738	rBV	194	93	0.01%	0.002%
96	13.237	3749	3752	3757	rBV	284	221	0.03%	0.004%
97	13.385	3794	3798	3803	rBV2	266	352	0.05%	0.007%
98	13.581	3858	3859	3861	rVB	272	81	0.01%	0.002%
99	13.944	3970	3972	3973	rBV	194	81	0.01%	0.002%
100	13.993	3985	3987	3991	rVB2	384	181	0.03%	0.004%

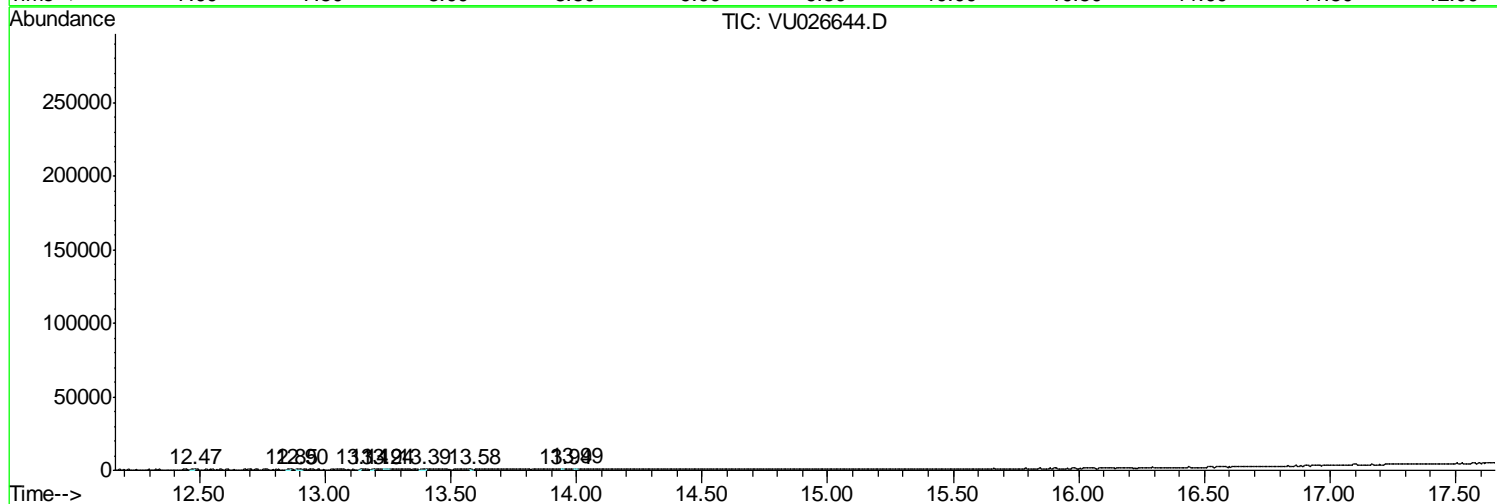
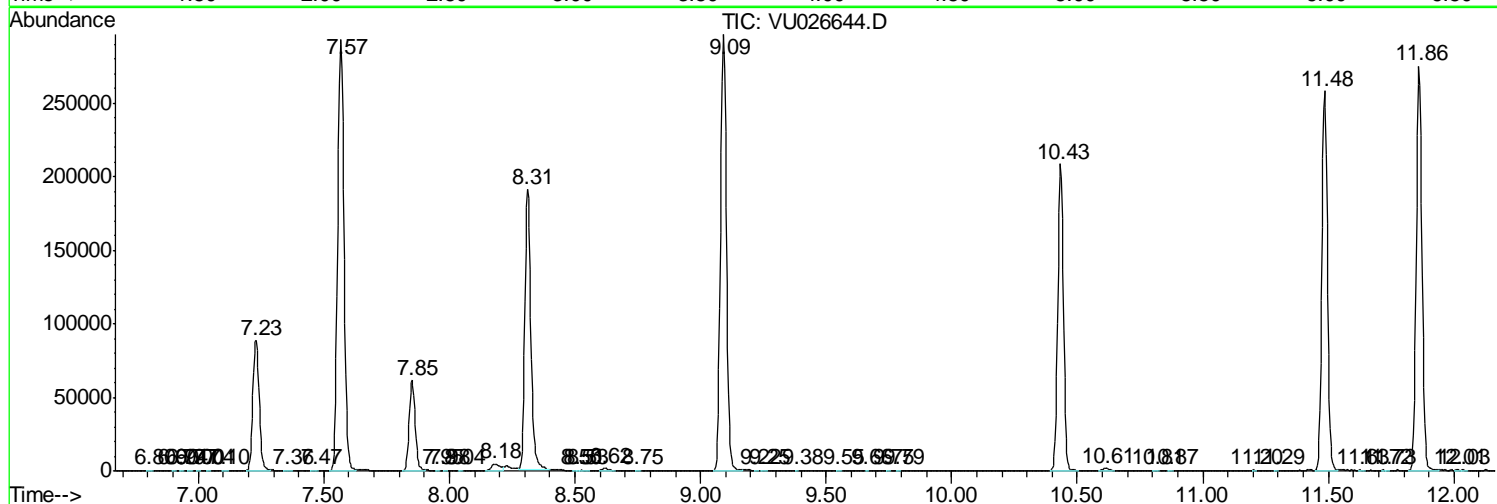
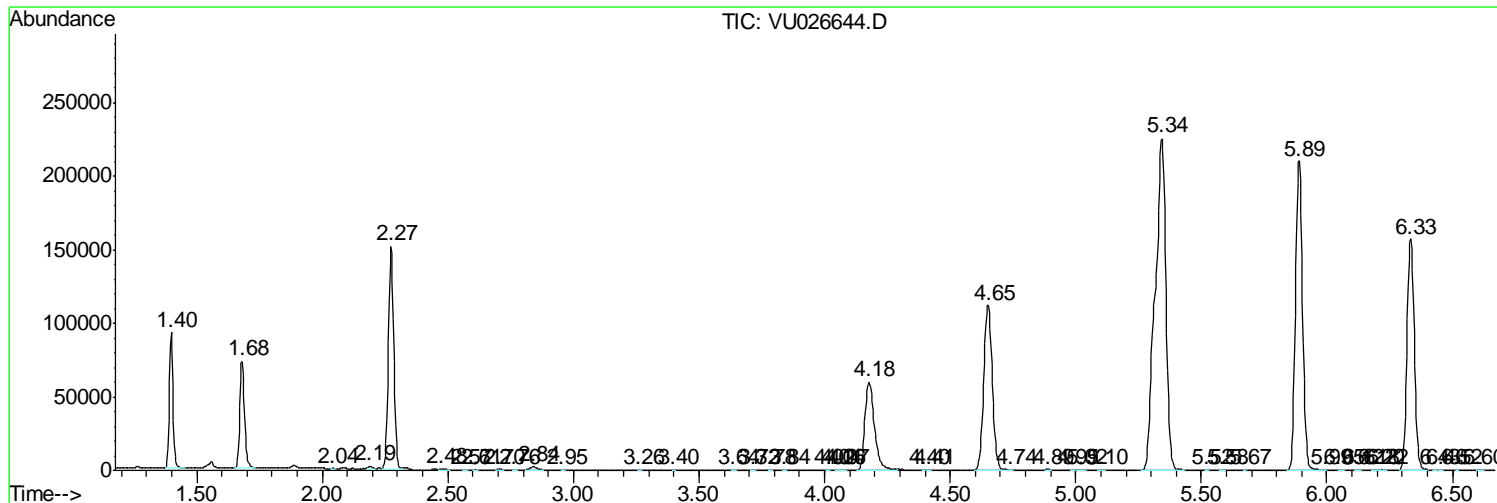
Sum of corrected areas: 4994783

Data Path : Z:\VOASRV\HPCHEM1\MSVOA U\DATA\VU091018\
 Data File : VU026644.D
 Acq On : 10 Sep 2018 12:34
 Operator : MD/SY
 Sample : J4765-06
 Misc : 5.0mL/MSVOA U/WATER
 ALS Vial : 12 Sample Multiplier: 1

Instrument :
 MSVOA_U
 Client Sampled :
 VHBLK02

Quant Method : Z:\VOASRV\HPCHEM1\MSVOA_U\METHOD\SOMULM091018WMA.M
 Quant Title : VOC Analysis

TIC Library : C:\DATABASE\NIST11.L
 TIC Integration Parameters: LSCINT.P



Data Path : Z:\VOASRV\HPCHEM1\MSVOA_U\DATA\VU091018\
Data File : VU026644.D
Acq On : 10 Sep 2018 12:34
Operator : MD/SY
Sample : J4765-06
Misc : 5.0mL/MSVOA_U/WATER
ALS Vial : 12 Sample Multiplier: 1

Instrument :
MSVOA_U
ClientSampleId :
VHBLK02

Quant Method : Z:\VOASRV\HPCHEM1\MSVOA_U\METHOD\SOMULM091018WMA.M
Quant Title : VOC Analysis

TIC Library : C:\DATABASE\NIST11.L
TIC Integration Parameters: LSCINT.P

No Library Search Compounds Detected

Data Path : Z:\VOASRV\HPCHEM1\MSVOA_U\DATA\VU091018\
Data File : VU026644.D
Acq On : 10 Sep 2018 12:34
Operator : MD/SY
Sample : J4765-06
Misc : 5.0mL/MSVOA_U/WATER
ALS Vial : 12 Sample Multiplier: 1

Instrument :
MSVOA_U
ClientSampleId :
VHBLK02

Quant Method : Z:\VOASRV\HPCHEM1\MSVOA_U\METHOD\SOMULM091018WMA.M
Quant Title : VOC Analysis

TIC Library : C:\DATABASE\NIST11.L
TIC Integration Parameters: LSCINT.P

TIC Top Hit name	RT	EstConc	Units	Response	--Internal Standard--			
					#	RT	Resp	Conc
