

Data Path : Z:\VOASRV\HPCHEM1\MSVOA U\DATA\VU091019\
 Data File : VU034445.D
 Acq On : 10 Sep 2019 12:52
 Operator : JC/SP
 Sample : K4602-35
 Misc : 5.0mL/MSVOA U/WATER
 ALS Vial : 12 Sample Multiplier: 1

Instrument :
 MSVOA_U
 ClientSampleId :
 PAR-D2-(0)

Quant Time: Sep 11 06:38:27 2019
 Quant Method : Z:\VOASRV\HPCHEM1\MSVOA_U\METHOD\82U090619W.M
 Quant Title : SW846 8260
 QLast Update : Fri Sep 06 05:10:13 2019
 Response via : Initial Calibration

Internal Standards	R.T.	QIon	Response	Conc	Units	Dev(Min)
1) Pentafluorobenzene	4.96	168	240776	50.00	ug/l	0.00
34) 1,4-Difluorobenzene	5.87	114	373885	50.00	ug/l	0.00
63) Chlorobenzene-d5	9.07	117	391381	50.00	ug/l	0.00
72) 1,4-Dichlorobenzene-d4	11.46	152	214429	50.00	ug/l	0.00

System Monitoring Compounds

33) 1,2-Dichloroethane-d4	5.29	65	190755	52.36	ug/l	0.00
Spiked Amount	50.000		Recovery	=	104.72%	
35) Dibromofluoromethane	4.86	113	167747	48.22	ug/l	0.00
Spiked Amount	50.000		Recovery	=	96.44%	
50) Toluene-d8	7.54	98	619200	47.37	ug/l	0.00
Spiked Amount	50.000		Recovery	=	94.74%	
62) 4-Bromofluorobenzene	10.29	95	210753	41.76	ug/l	0.00
Spiked Amount	50.000		Recovery	=	83.52%	

Target Compounds

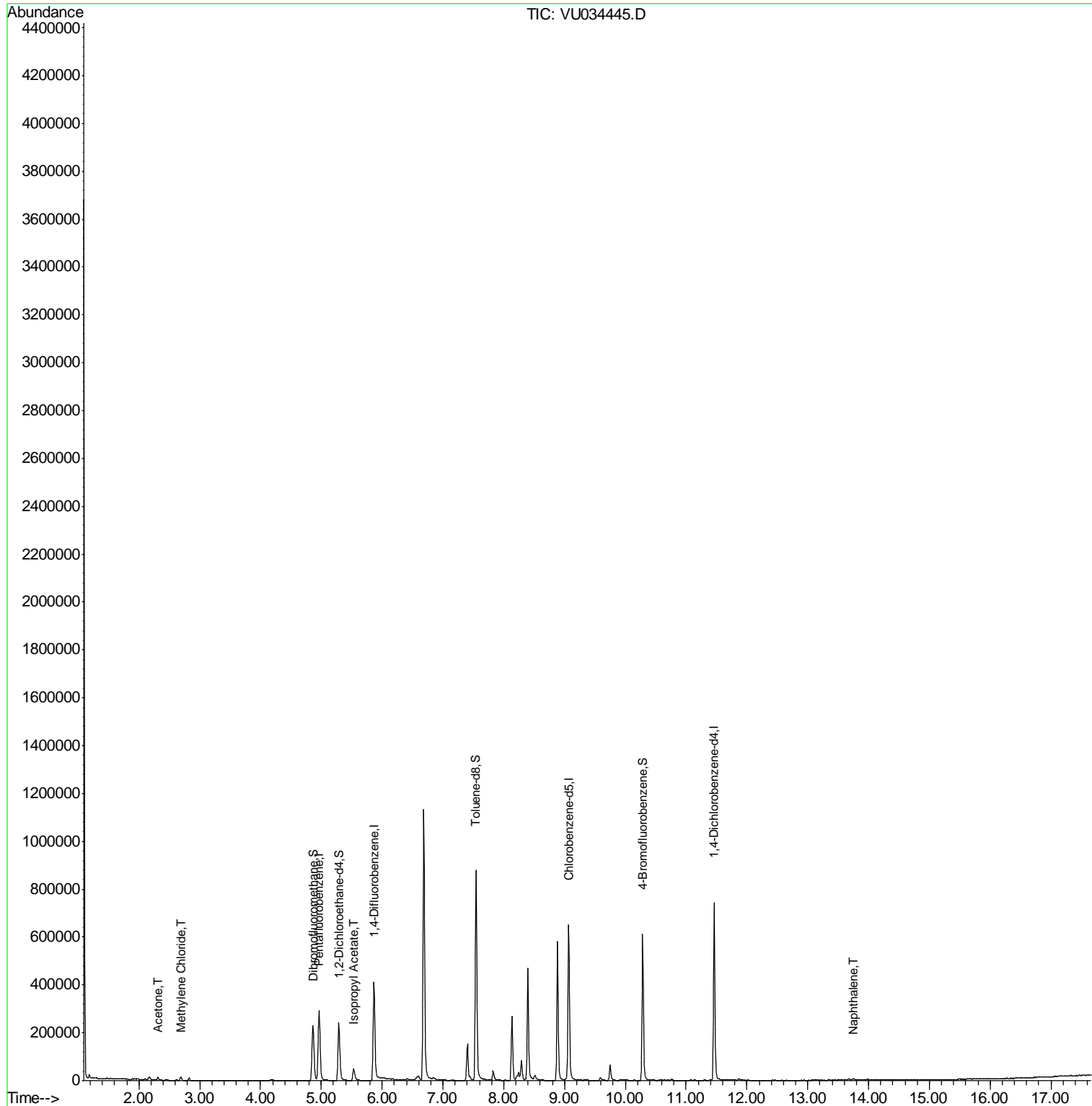
					Qvalue
16) Acetone	2.31	43	12459	6.609	ug/l 97
20) Methylene Chloride	2.69	84	6078	1.581	ug/l 95
43) Isopropyl Acetate	5.53	43	60153	8.043	ug/l 99
95) Naphthalene	13.75	128	9400	4.572	ug/l # 89

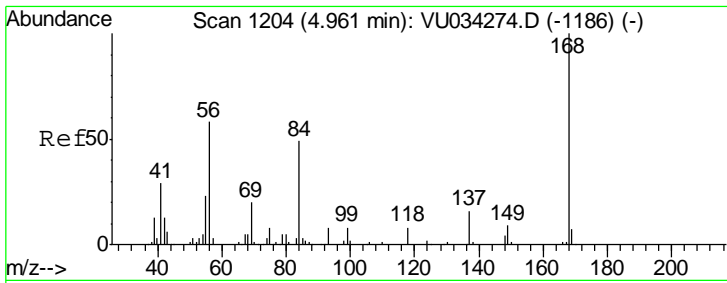
(#) = qualifier out of range (m) = manual integration (+) = signals summed

Data Path : Z:\VOASRV\HPCHEM1\MSVOA U\DATA\VU091019\
Data File : VU034445.D
Acq On : 10 Sep 2019 12:52
Operator : JC/SP
Sample : K4602-35
Misc : 5.0mL/MSVOA U/WATER
ALS Vial : 12 Sample Multiplier: 1

Instrument :
MSVOA_U
ClientSampleId :
PAR-D2-(0)

Quant Time: Sep 11 06:38:27 2019
Quant Method : Z:\VOASRV\HPCHEM1\MSVOA_U\METHOD\82U090619W.M
Quant Title : SW846 8260
QLast Update : Fri Sep 06 05:10:13 2019
Response via : Initial Calibration

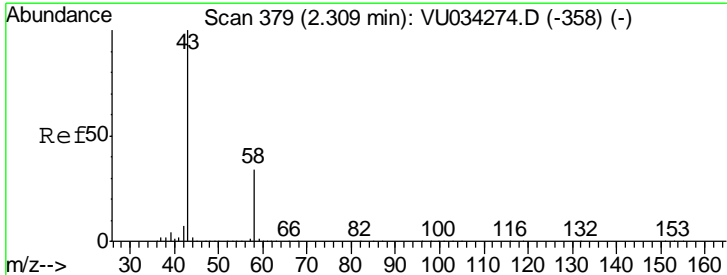
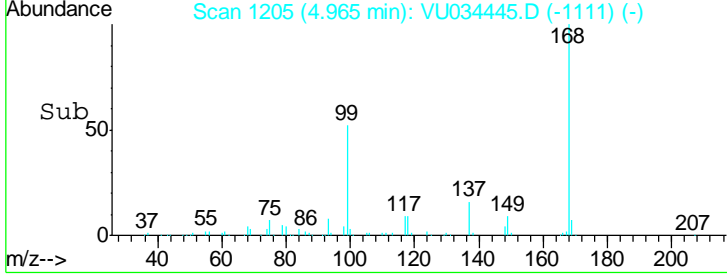
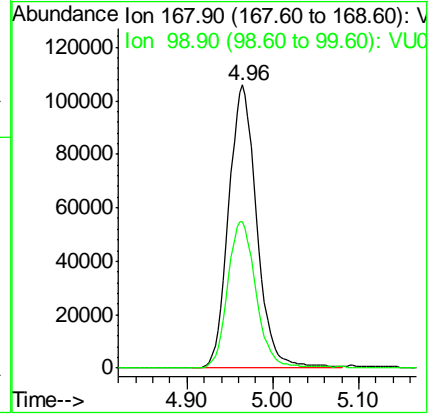
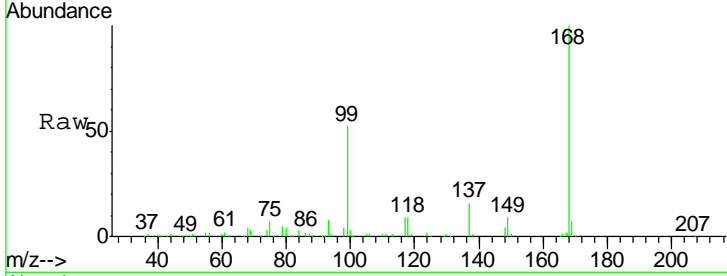




#1
 Pentafluorobenzene
 Concen: 50.000 ug/l
 RT: 4.96 min Scan# 1205
 Delta R.T. 0.00 min
 Lab File: VU034445.D
 Acq: 10 Sep 2019 12:52

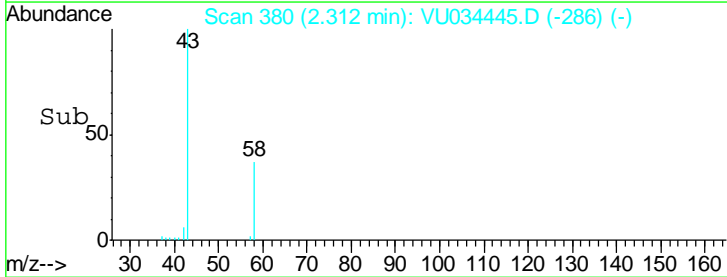
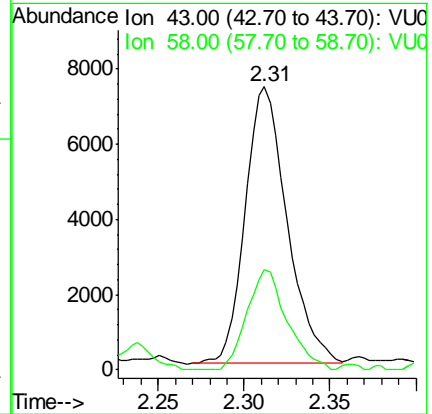
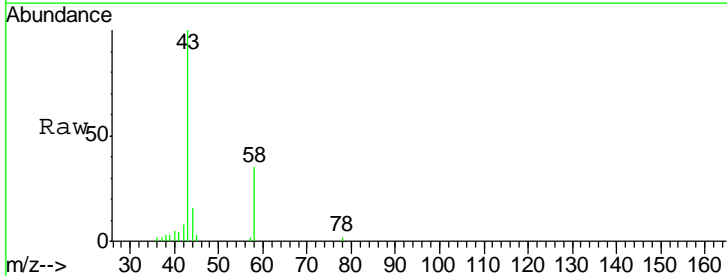
Instrument :
 MSVOA_U
 ClientSampled :
 PAR-D2-(0)

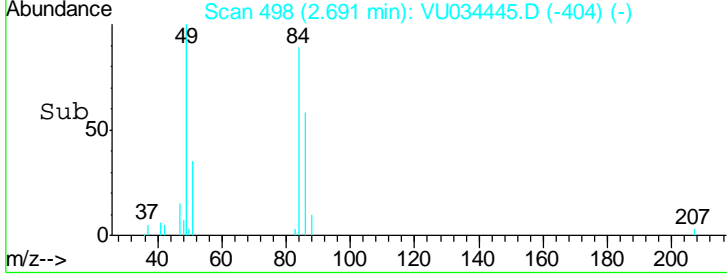
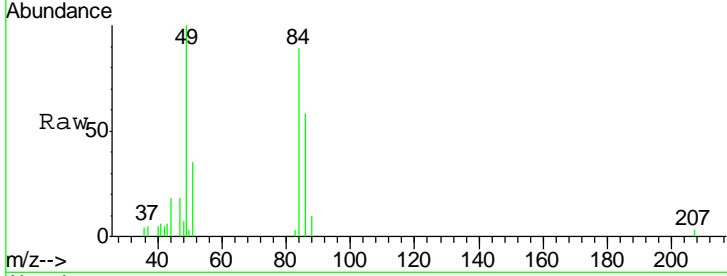
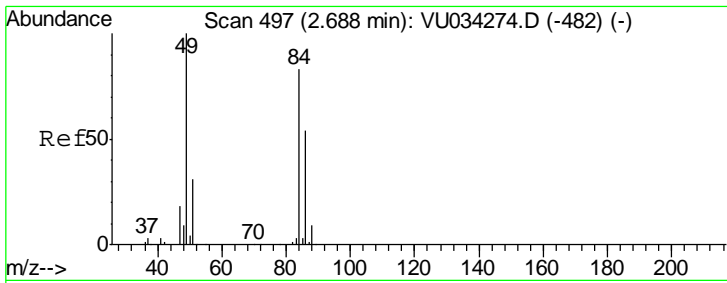
Tgt Ion	Resp	Lower	Upper
168	100		
99	51.6	41.6	62.4



#16
 Acetone
 Concen: 6.609 ug/l
 RT: 2.31 min Scan# 380
 Delta R.T. 0.00 min
 Lab File: VU034445.D
 Acq: 10 Sep 2019 12:52

Tgt Ion	Resp	Lower	Upper
43	100		
58	36.2	27.6	41.4

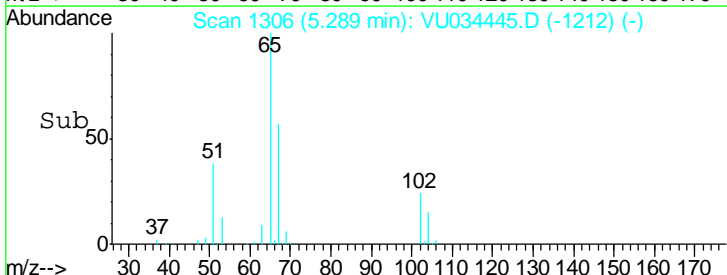
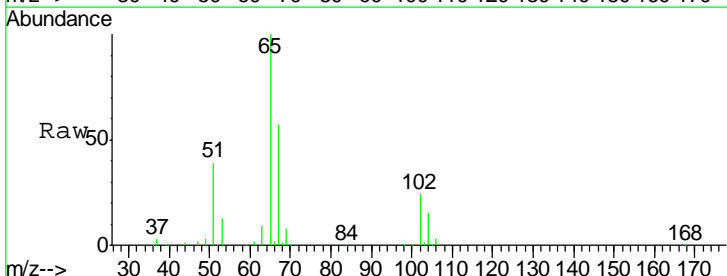
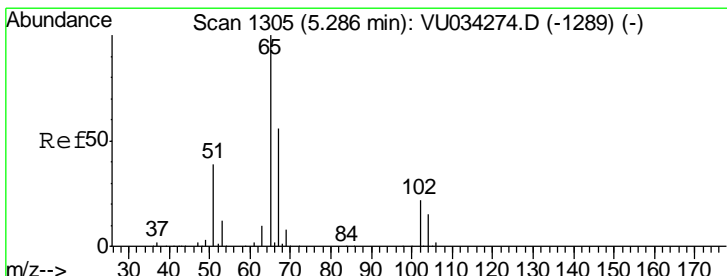
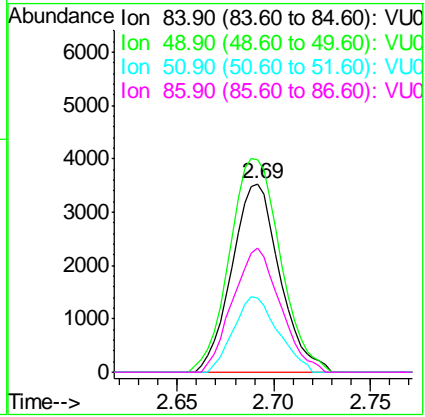




#20
 Methylene Chloride
 Concen: 1.581 ug/l
 RT: 2.69 min Scan# 498
 Delta R.T. 0.00 min
 Lab File: VU034445.D
 Acq: 10 Sep 2019 12:52

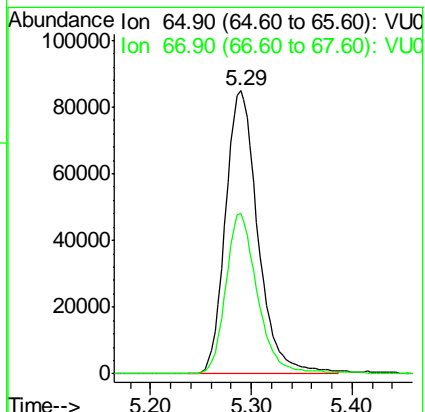
Instrument :
 MSVOA_U
ClientSampled :
 PAR-D2-(0)

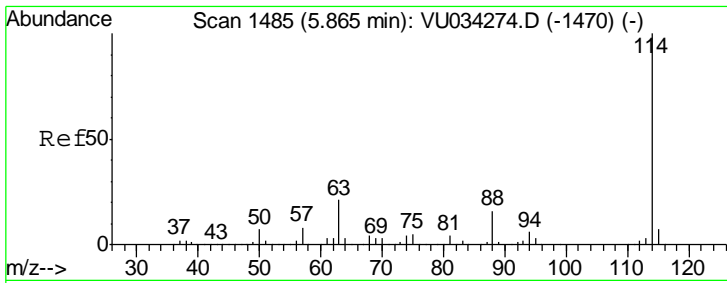
Tgt Ion	Resp	Lower	Upper
84	6078		
49	112.9	96.0	144.0
51	39.3	30.0	45.0
86	65.8	51.4	77.0



#33
 1,2-Dichloroethane-d4
 Concen: 52.362 ug/l
 RT: 5.29 min Scan# 1306
 Delta R.T. 0.00 min
 Lab File: VU034445.D
 Acq: 10 Sep 2019 12:52

Tgt Ion	Resp	Lower	Upper
65	190755		
67	55.3	0.0	112.4

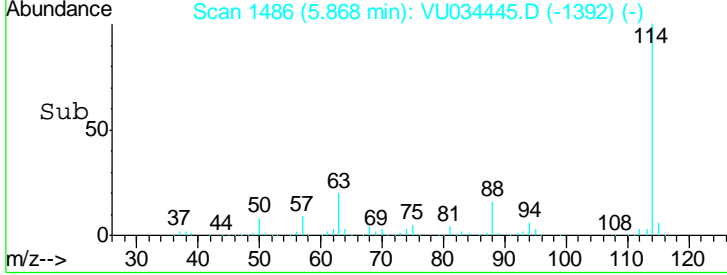
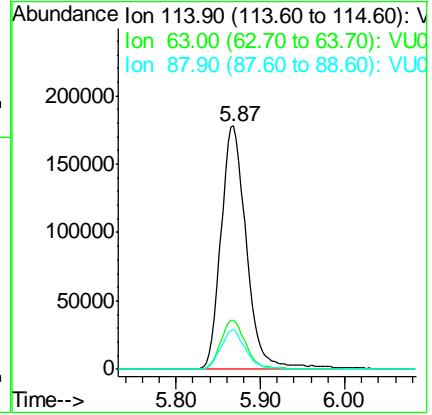
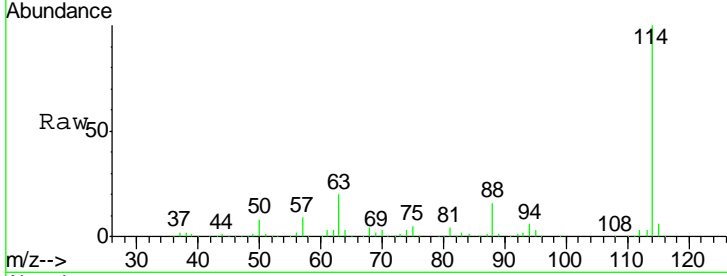




#34
 1,4-Difluorobenzene
 Concen: 50.000 ug/l
 RT: 5.87 min Scan# 1486
 Delta R.T. 0.00 min
 Lab File: VU034445.D
 Acq: 10 Sep 2019 12:52

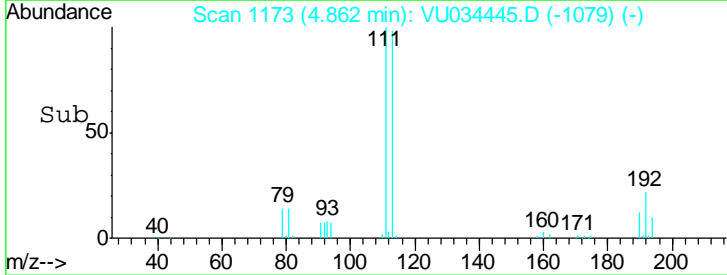
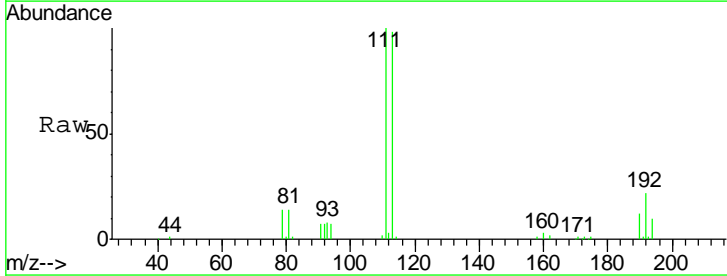
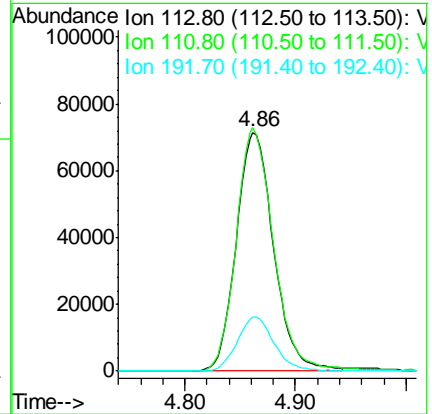
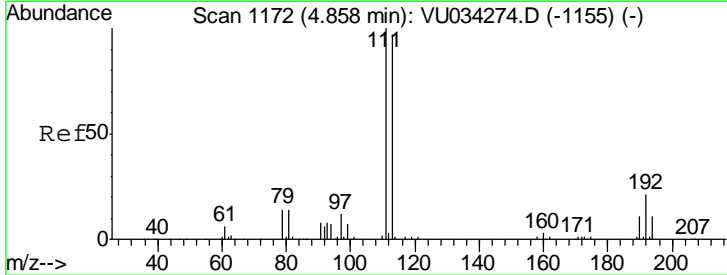
Instrument :
 MSVOA_U
 ClientSampled :
 PAR-D2-(0)

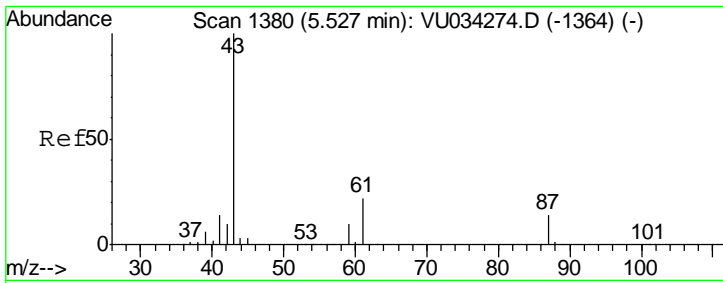
Tgt Ion	Resp	Lower	Upper
114	373885		
63	20.3	0.0	42.4
88	16.3	0.0	32.4



#35
 Dibromofluoromethane
 Concen: 48.217 ug/l
 RT: 4.86 min Scan# 1173
 Delta R.T. 0.00 min
 Lab File: VU034445.D
 Acq: 10 Sep 2019 12:52

Tgt Ion	Resp	Lower	Upper
113	167747		
111	102.2	81.5	122.3
192	22.3	17.8	26.8

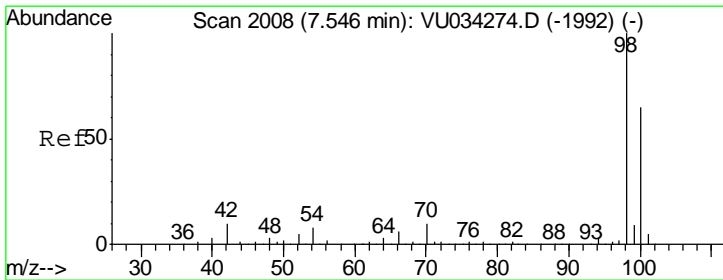
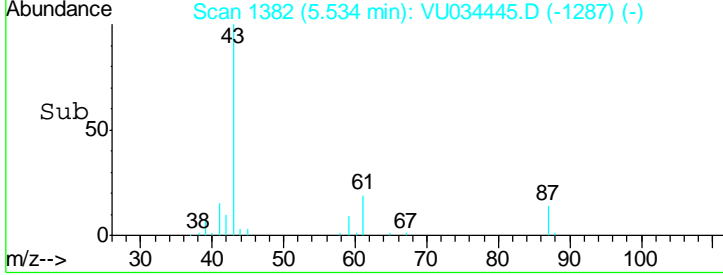
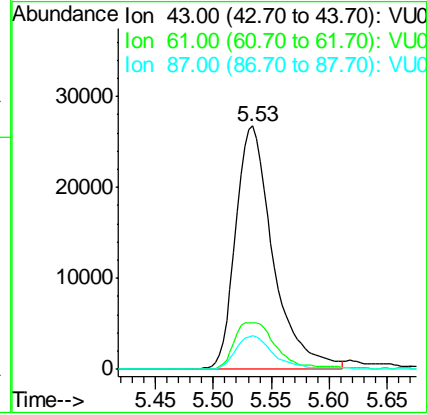
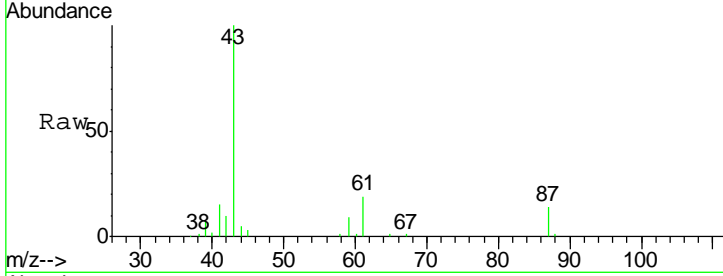




#43
 Isopropyl Acetate
 Concen: 8.043 ug/l
 RT: 5.53 min Scan# 1382
 Delta R.T. 0.01 min
 Lab File: VU034445.D
 Acq: 10 Sep 2019 12:52

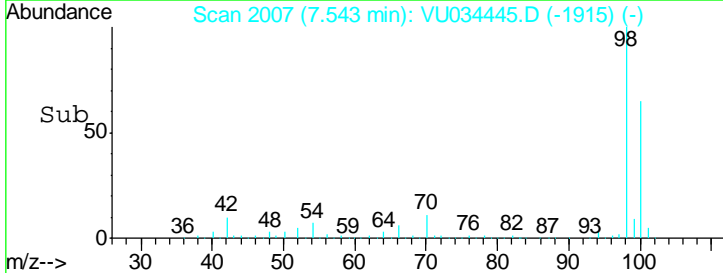
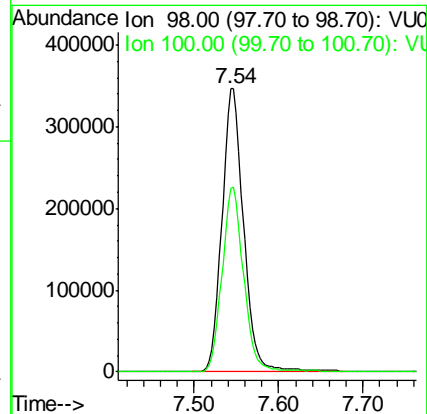
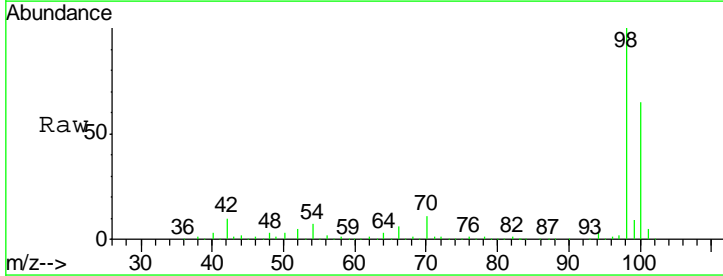
Instrument :
 MSVOA_U
 ClientSampled :
 PAR-D2-(0)

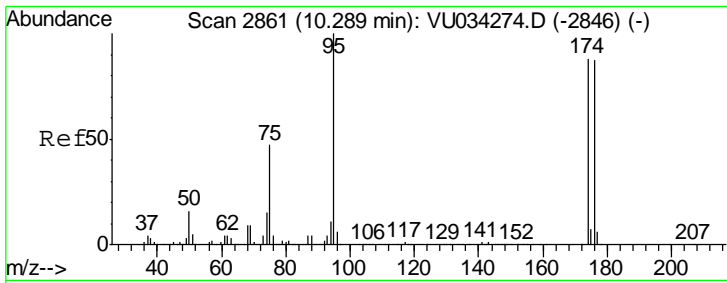
Tgt Ion	Resp	Lower	Upper
43	60153		
61	22.3	17.1	25.7
87	13.8	11.1	16.7



#50
 Toluene-d8
 Concen: 47.373 ug/l
 RT: 7.54 min Scan# 2007
 Delta R.T. -0.00 min
 Lab File: VU034445.D
 Acq: 10 Sep 2019 12:52

Tgt Ion	Resp	Lower	Upper
98	619200		
100	64.7	51.7	77.5

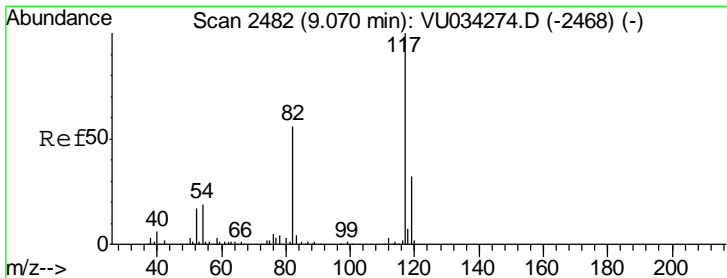
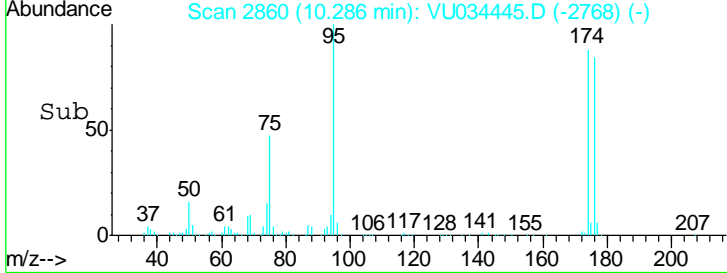
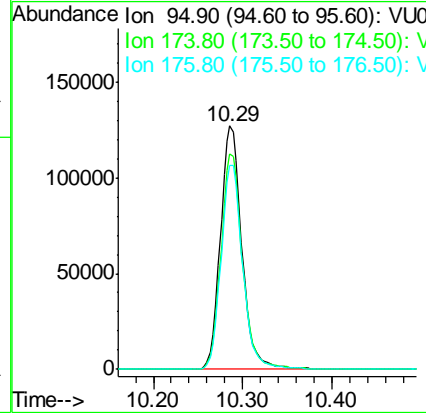
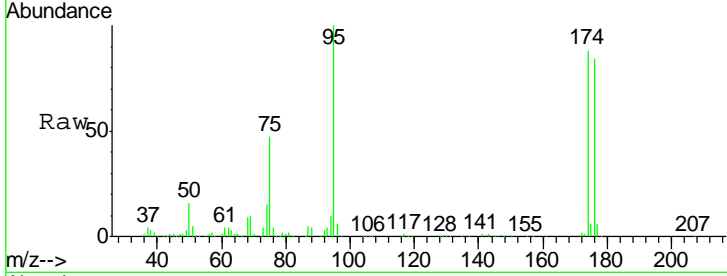




#62
 4-Bromofluorobenzene
 Concen: 41.762 ug/l
 RT: 10.29 min Scan# 2860
 Delta R.T. -0.00 min
 Lab File: VU034445.D
 Acq: 10 Sep 2019 12:52

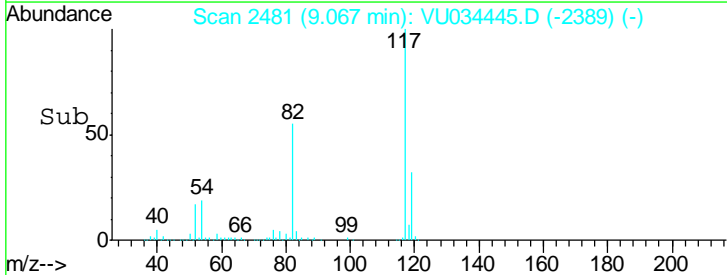
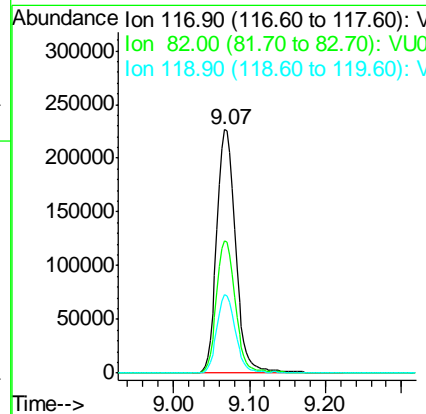
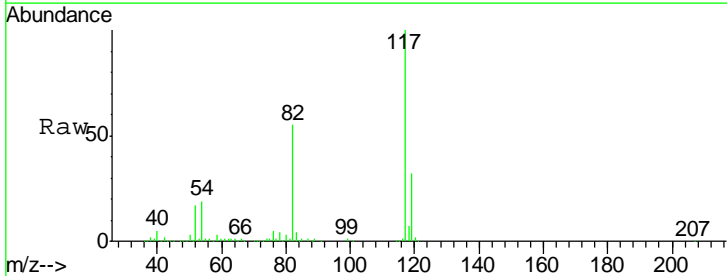
Instrument :
 MSVOA_U
 ClientSampled :
 PAR-D2-(0)

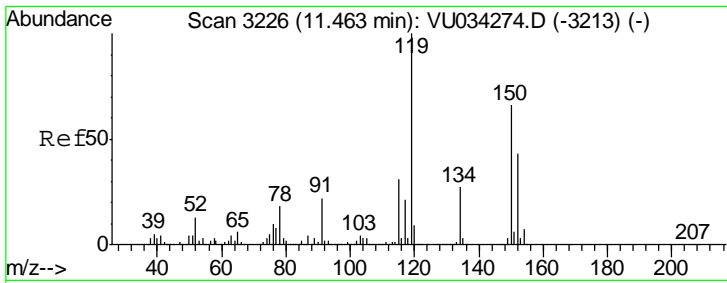
Tgt Ion	Resp	Lower	Upper
95	210753		
174	89.4	0.0	175.2
176	84.9	0.0	168.0



#63
 Chlorobenzene-d5
 Concen: 50.000 ug/l
 RT: 9.07 min Scan# 2481
 Delta R.T. -0.00 min
 Lab File: VU034445.D
 Acq: 10 Sep 2019 12:52

Tgt Ion	Resp	Lower	Upper
117	391381		
82	54.6	44.6	67.0
119	32.0	25.9	38.9

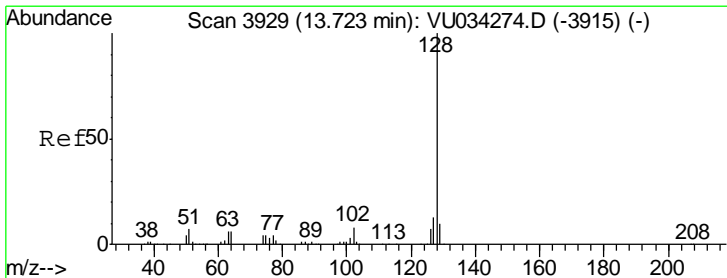
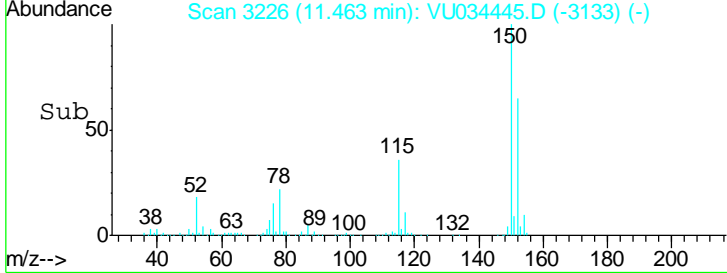
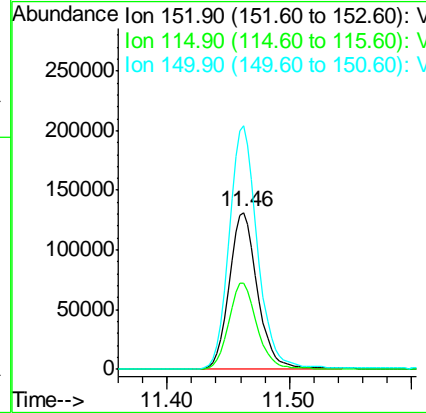
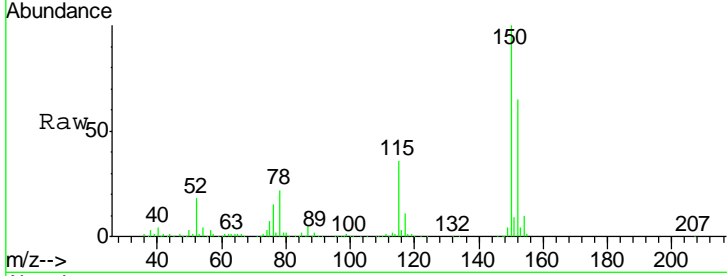




#72
 1,4-Dichlorobenzene-d4
 Concen: 50.000 ug/l
 RT: 11.46 min Scan# 3226
 Delta R.T. 0.00 min
 Lab File: VU034445.D
 Acq: 10 Sep 2019 12:52

Instrument :
 MSVOA_U
 ClientSampled :
 PAR-D2-(0)

Tgt Ion	Resp	Lower	Upper
152	100		
115	55.3	39.1	117.3
150	156.2	0.0	345.4



#95
 Naphthalene
 Concen: 4.572 ug/l
 RT: 13.75 min Scan# 3936
 Delta R.T. 0.02 min
 Lab File: VU034445.D
 Acq: 10 Sep 2019 12:52

Tgt Ion	Resp	Lower	Upper
128	100		
127	11.0	10.6	15.8
129	3.6	8.4	12.6#

