

Data Path : Z:\VOASRV\HPCHEM1\MSVOA U\DATA\VU091219\
 Data File : VU034511.D
 Acq On : 12 Sep 2019 11:33
 Operator : JC/SP
 Sample : K4756-23
 Misc : 5.0mL/MSVOA U/WATER
 ALS Vial : 7 Sample Multiplier: 1

Instrument :
 MSVOA_U
 ClientSampleId :
 CPA-SW-15-M27W1-090619

Integration Parameters: RTEINT.P
 Integrator: RTE
 Smoothing : ON Filtering: 5
 Sampling : 1 Min Area: 3 % of largest Peak
 Start Thrs: 0.2 Max Peaks: 100
 Stop Thrs : 0 Peak Location: TOP

If leading or trailing edge < 100 prefer < Baseline drop else tangent >
 Peak separation: 5

Method : Z:\VOASRV\HPCHEM1\MSVOA_U\METHOD\82U090619W.M
 Title : SW846 8260

Signal : TIC

peak #	R.T. min	first scan	max scan	last scan	PK TY	peak height	corr. area	corr. % max.	% of total
1	2.434	408	418	432	rBV	18481	34818	2.73%	0.557%
2	4.862	1156	1173	1191	rBV2	207747	479744	37.57%	7.679%
3	4.961	1191	1204	1232	rVB	251162	569827	44.62%	9.120%
4	5.289	1292	1306	1338	rBV	213320	470356	36.83%	7.528%
5	5.868	1471	1486	1508	rBV	333925	687365	53.82%	11.002%
6	7.546	1995	2008	2047	rBV	694431	1277075	100.00%	20.441%
7	8.160	2189	2199	2208	rBV2	13699	25019	1.96%	0.400%
8	9.070	2469	2482	2505	rBV	493350	859339	67.29%	13.754%
9	10.289	2848	2861	2890	rBV	482196	829133	64.92%	13.271%
10	10.591	2944	2955	2966	rVB2	16367	29896	2.34%	0.479%
11	11.463	3214	3226	3254	rBV	588681	985193	77.14%	15.769%

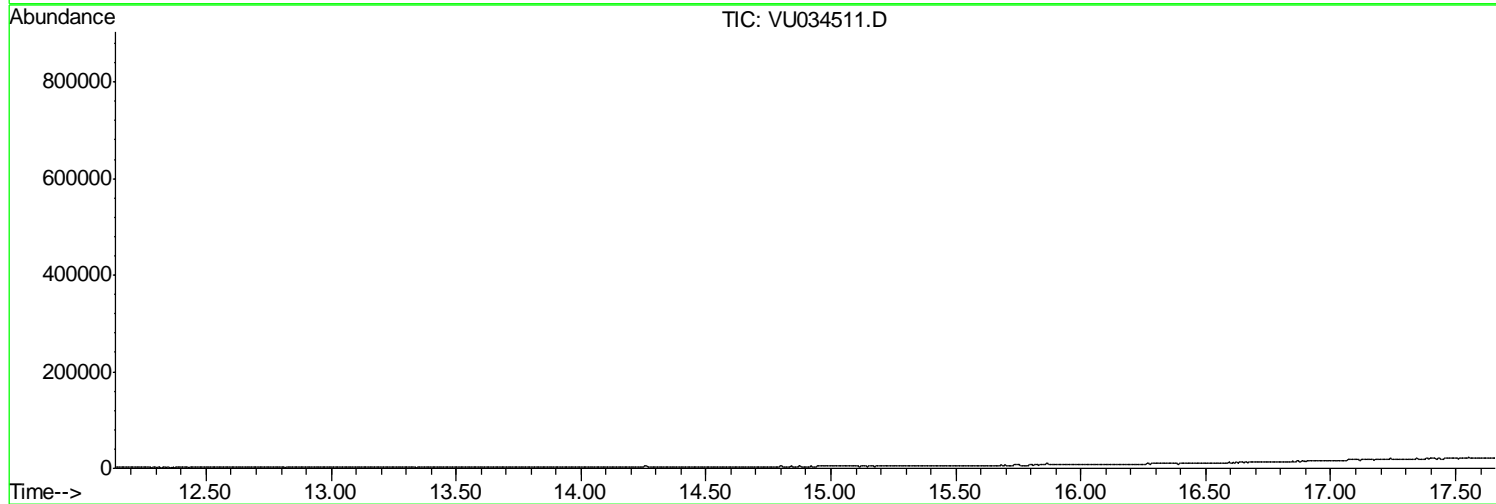
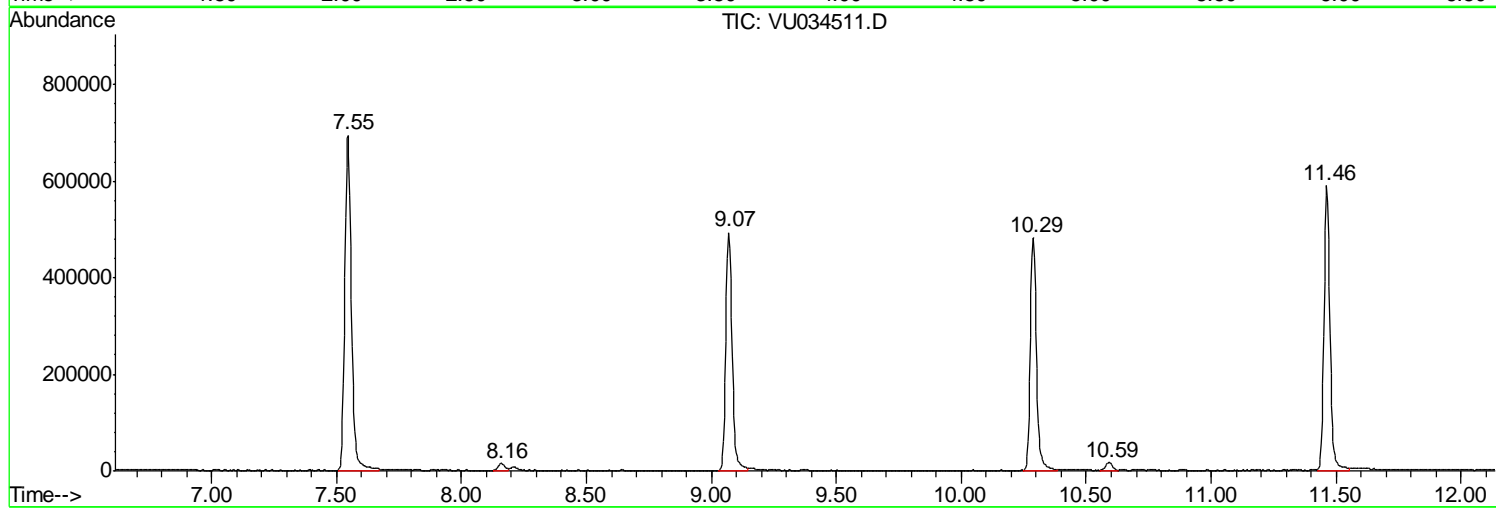
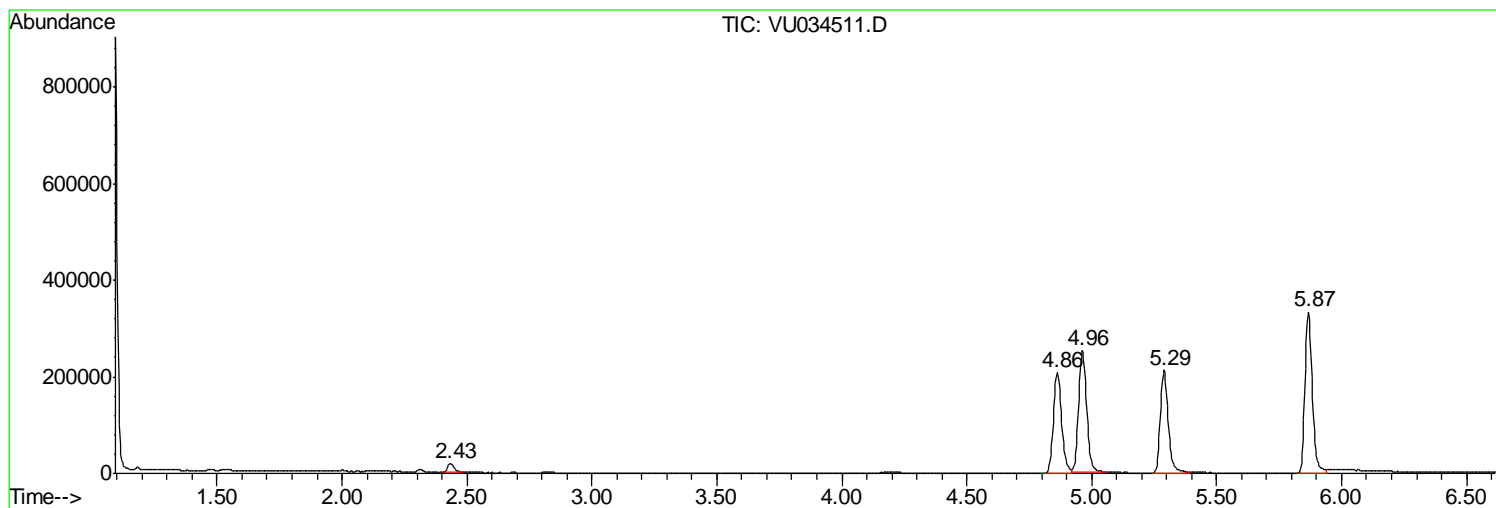
Sum of corrected areas: 6247765

Data Path : Z:\VOASRV\HPCHEM1\MSVOA U\DATA\VU091219\
Data File : VU034511.D
Acq On : 12 Sep 2019 11:33
Operator : JC/SP
Sample : K4756-23
Misc : 5.0mL/MSVOA U/WATER
ALS Vial : 7 Sample Multiplier: 1

Instrument :
MSVOA_U
ClientSampled :
CPA-SW-15-M27W1-090619

Quant Method : Z:\VOASRV\HPCHEM1\MSVOA_U\METHOD\82U090619W.M
Quant Title : SW846 8260

TIC Library : C:\DATABASE\NIST11.L
TIC Integration Parameters: LSCINT.P



Data Path : Z:\VOASRV\HPCHEM1\MSVOA_U\DATA\VU091219\
Data File : VU034511.D
Acq On : 12 Sep 2019 11:33
Operator : JC/SP
Sample : K4756-23
Misc : 5.0mL/MSVOA_U/WATER
ALS Vial : 7 Sample Multiplier: 1

Instrument :
MSVOA_U
ClientSampleId :
CPA-SW-15-M27W1-090619

Quant Method : Z:\VOASRV\HPCHEM1\MSVOA_U\METHOD\82U090619W.M
Quant Title : SW846 8260

TIC Library : C:\DATABASE\NIST11.L
TIC Integration Parameters: LSCINT.P

No Library Search Compounds Detected

Data Path : Z:\VOASRV\HPCHEM1\MSVOA_U\DATA\VU091219\
Data File : VU034511.D
Acq On : 12 Sep 2019 11:33
Operator : JC/SP
Sample : K4756-23
Misc : 5.0mL/MSVOA_U/WATER
ALS Vial : 7 Sample Multiplier: 1

Instrument :
MSVOA_U
ClientSampleId :
CPA-SW-15-M27W1-090619

Quant Method : Z:\VOASRV\HPCHEM1\MSVOA_U\METHOD\82U090619W.M
Quant Title : SW846 8260

TIC Library : C:\DATABASE\NIST11.L
TIC Integration Parameters: LSCINT.P

TIC Top Hit name	RT	EstConc	Units	Response	--Internal Standard--			
					#	RT	Resp	Conc
