

Data Path : Z:\voasrv\HPCHEM1\MSVOA_U\Data\VU091223\
 Data File : VU055256.D
 Acq On : 12 Sep 2023 18:30
 Operator : MD/SY
 Sample : 04306-09 40X
 Misc : 25.0mL/MSVOA_U/WATER
 ALS Vial : 18 Sample Multiplier: 1

Instrument :
 MSVOA_U
 ClientSampleId :
 BH4K6

Integration Parameters: rteint.p

Integrator: RTE

Smoothing : ON

Filtering: 5

Sampling : 1

Min Area: 3 % of largest Peak

Start Thrs: 0.1

Max Peaks: 100

Stop Thrs : 0

Peak Location: TOP

If leading or trailing edge < 100 prefer < Baseline drop else tangent >

Peak separation: 5

Method : Z:\voasrv\HPCHEM1\MSVOA_U\Method\SFAMUTR090123WMA.M

Title : TRACE VOA SFAM1.0

Signal : TIC: VU055256.D\data.ms

peak #	R.T. min	first scan	max scan	last scan	PK TY	peak height	corr. area	corr. % max.	% of total
1	1.596	88	95	106	rVB	40900	47472	7.09%	0.838%
2	1.908	184	192	211	rVB	60545	83282	12.44%	1.471%
3	2.564	381	396	410	rBV	82382	135995	20.32%	2.401%
4	3.039	533	544	561	rBV	31843	60571	9.05%	1.070%
5	3.184	578	589	605	rVB2	9438	20937	3.13%	0.370%
6	3.361	626	644	667	rBV2	116992	277680	41.48%	4.903%
7	4.625	1024	1037	1071	rBV2	98020	301163	44.99%	5.318%
8	5.062	1158	1173	1199	rBV	110382	247095	36.91%	4.363%
9	5.724	1359	1379	1400	rBV3	199584	536250	80.11%	9.469%
10	6.248	1528	1542	1560	rBV	233024	444059	66.34%	7.841%
11	6.541	1617	1633	1652	rBV4	103669	206848	30.90%	3.652%
12	6.689	1666	1679	1700	rBV2	139826	277475	41.45%	4.899%
13	7.567	1941	1952	1965	rBV	48956	87525	13.08%	1.545%
14	7.898	2042	2055	2075	rBV	237088	423299	63.24%	7.474%
15	8.181	2133	2143	2158	rBV2	28959	50440	7.54%	0.891%
16	8.634	2273	2284	2323	rBV3	289604	669383	100.00%	11.819%
17	9.415	2515	2527	2551	rBV	356057	613422	91.64%	10.831%
18	10.756	2932	2944	2959	rBV	107547	175704	26.25%	3.102%
19	11.811	3260	3272	3293	rBV	370440	597929	89.33%	10.558%
20	12.193	3378	3391	3410	rBV	240778	406949	60.79%	7.185%

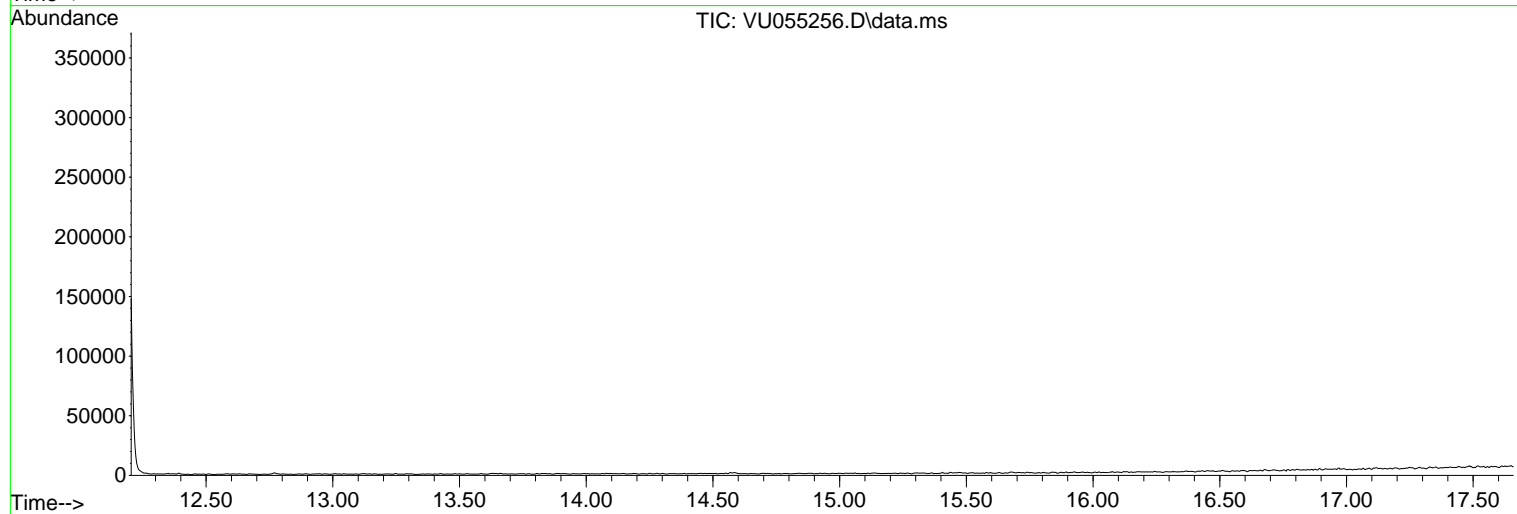
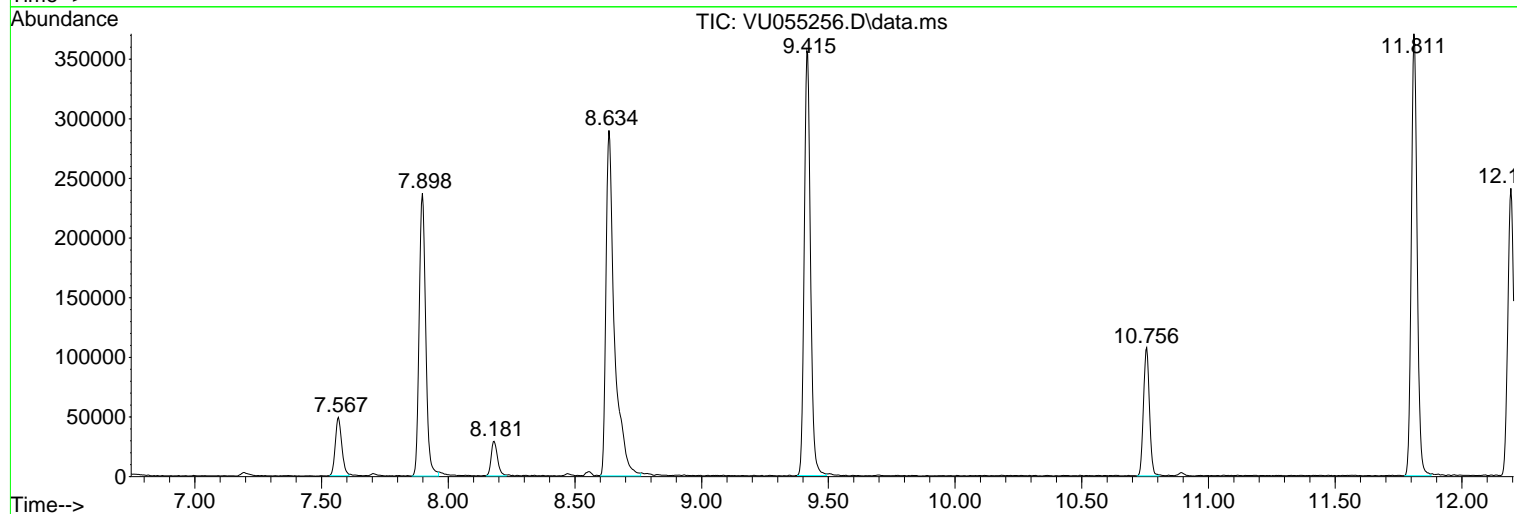
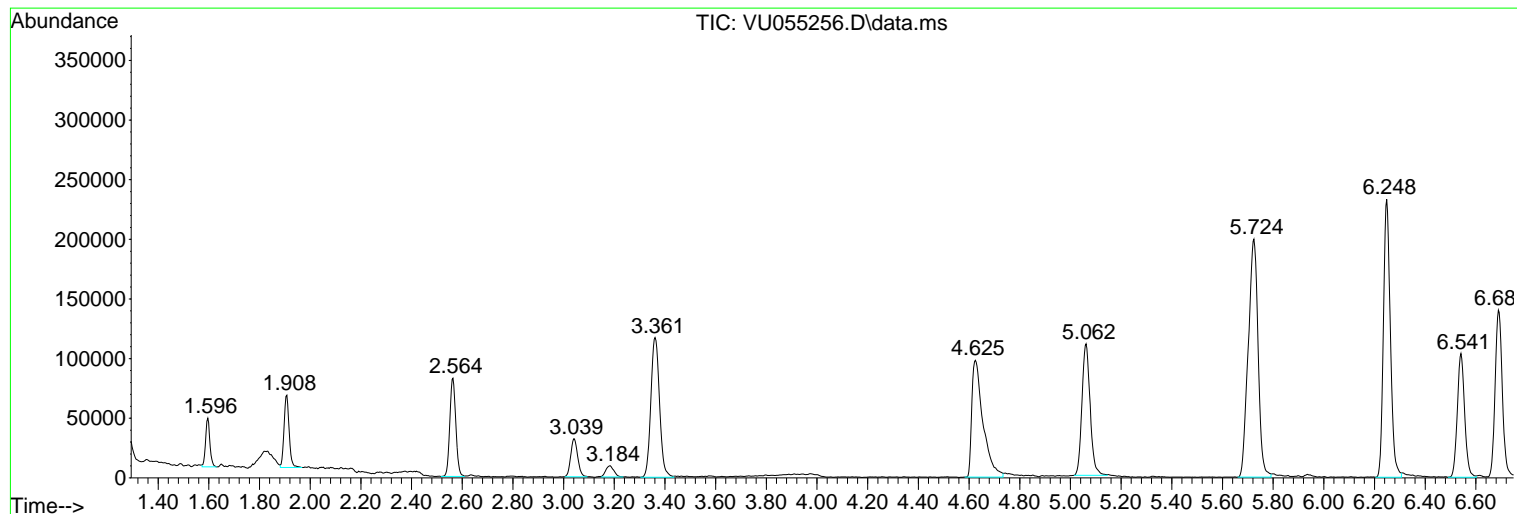
Sum of corrected areas: 5663478

Data Path : Z:\voasrv\HPCHEM1\MSVOA_U\Data\VU091223\
Data File : VU055256.D
Acq On : 12 Sep 2023 18:30
Operator : MD/SY
Sample : 04306-09 40X
Misc : 25.0mL/MSVOA_U/WATER
ALS Vial : 18 Sample Multiplier: 1

Instrument :
MSVOA_U
ClientSampleId :
BH4K6

Quant Method : Z:\voasrv\HPCHEM1\MSVOA_U\Method\SFAMUTR090123WMA.M
Quant Title : TRACE VOA SFAM1.0

TIC Library : C:\Database\NIST20.L
TIC Integration Parameters: LSCINT.P



Library Search Compound Report

Data Path : Z:\voasrv\HPCHEM1\MSVOA_U\Data\VU091223\
Data File : VU055256.D
Acq On : 12 Sep 2023 18:30
Operator : MD/SY
Sample : 04306-09 40X
Misc : 25.0mL/MSVOA_U/WATER
ALS Vial : 18 Sample Multiplier: 1

Instrument :
MSVOA_U
ClientSampleId :
BH4K6

Quant Method : Z:\voasrv\HPCHEM1\MSVOA_U\Method\SFAMUTR090123WMA.M
Quant Title : TRACE VOA SFAM1.0

TIC Library : C:\Database\NIST20.L
TIC Integration Parameters: LSCINT.P

No Library Search Compounds Detected

Data Path : Z:\voasrv\HPCHEM1\MSVOA_U\Data\VU091223\
Data File : VU055256.D
Acq On : 12 Sep 2023 18:30
Operator : MD/SY
Sample : 04306-09 40X
Misc : 25.0mL/MSVOA_U/WATER
ALS Vial : 18 Sample Multiplier: 1

Instrument :
MSVOA_U
ClientSampleId :
BH4K6

Quant Method : Z:\voasrv\HPCHEM1\MSVOA_U\Method\SFAMUTR090123WMA.M
Quant Title : TRACE VOA SFAM1.0

TIC Library : C:\Database\NIST20.L
TIC Integration Parameters: LSCINT.P

TIC Top Hit name	RT	EstConc	Units	Response	--Internal Standard--		
					#	RT	Resp Conc
