

Data Path : Z:\voasrv\HPCHEM1\MSVOA\_U\Data\VU091324\  
 Data File : VU060749.D  
 Acq On : 13 Sep 2024 13:29  
 Operator : MD/SY  
 Sample : P3918-11  
 Misc : 25.0mL/MSVOA\_U/WATER  
 ALS Vial : 5 Sample Multiplier: 1

Instrument :  
 MSVOA\_U  
 ClientSampleId :  
 COAM6

Integration Parameters: rteint.p  
 Integrator: RTE  
 Smoothing : ON Filtering: 5  
 Sampling : 1 Min Area: 3 % of largest Peak  
 Start Thrs: 0.1 Max Peaks: 100  
 Stop Thrs : 0 Peak Location: TOP

If leading or trailing edge < 100 prefer < Baseline drop else tangent >  
 Peak separation: 5

Method : Z:\voasrv\HPCHEM1\MSVOA\_U\Method\SFAMUTR082324WMA.M  
 Title : TRACE VOA SFAM1.0

Signal : TIC: VU060749.D\data.ms

peak #	R.T. min	first scan	max scan	last scan	PK TY	peak height	corr. area	corr. % max.	% of total
1	1.596	85	95	106	rBV	18565	23563	11.33%	1.479%
2	1.911	183	193	206	rBV	20985	26916	12.94%	1.690%
3	2.560	384	395	412	rVB	38180	61822	29.73%	3.881%
4	4.634	1028	1040	1072	rBV	18403	59990	28.85%	3.766%
5	5.055	1157	1171	1192	rBV	45574	104694	50.35%	6.573%
6	5.718	1360	1377	1404	rBV3	76480	202536	97.40%	12.716%
7	6.245	1529	1541	1568	rBV3	65667	129932	62.49%	8.157%
8	6.682	1667	1677	1699	rBV2	41172	80486	38.71%	5.053%
9	7.560	1941	1950	1971	rBV2	16866	29331	14.11%	1.841%
10	7.894	2042	2054	2071	rBV	73303	131109	63.05%	8.231%
11	8.177	2133	2142	2157	rBV2	12570	22521	10.83%	1.414%
12	8.631	2273	2283	2314	rBV	98055	207940	100.00%	13.055%
13	9.412	2515	2526	2556	rBV	99437	175239	84.27%	11.002%
14	10.750	2930	2942	2955	rBB2	30832	51794	24.91%	3.252%
15	10.888	2975	2985	2993	rBV3	3922	6295	3.03%	0.395%
16	11.807	3260	3271	3294	rBV2	92134	153464	73.80%	9.635%
17	12.071	3345	3353	3361	rBV6	1595	2433	1.17%	0.153%
18	12.187	3378	3389	3403	rBV	71191	119605	57.52%	7.509%
19	12.762	3561	3568	3580	rVB4	2093	3154	1.52%	0.198%

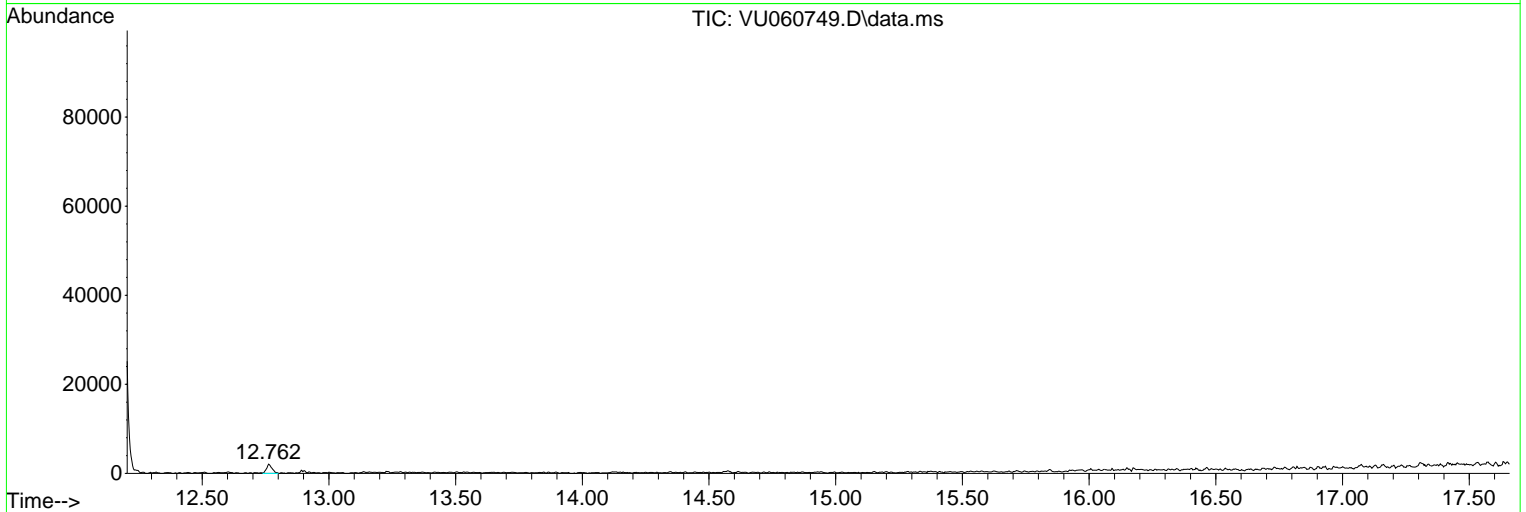
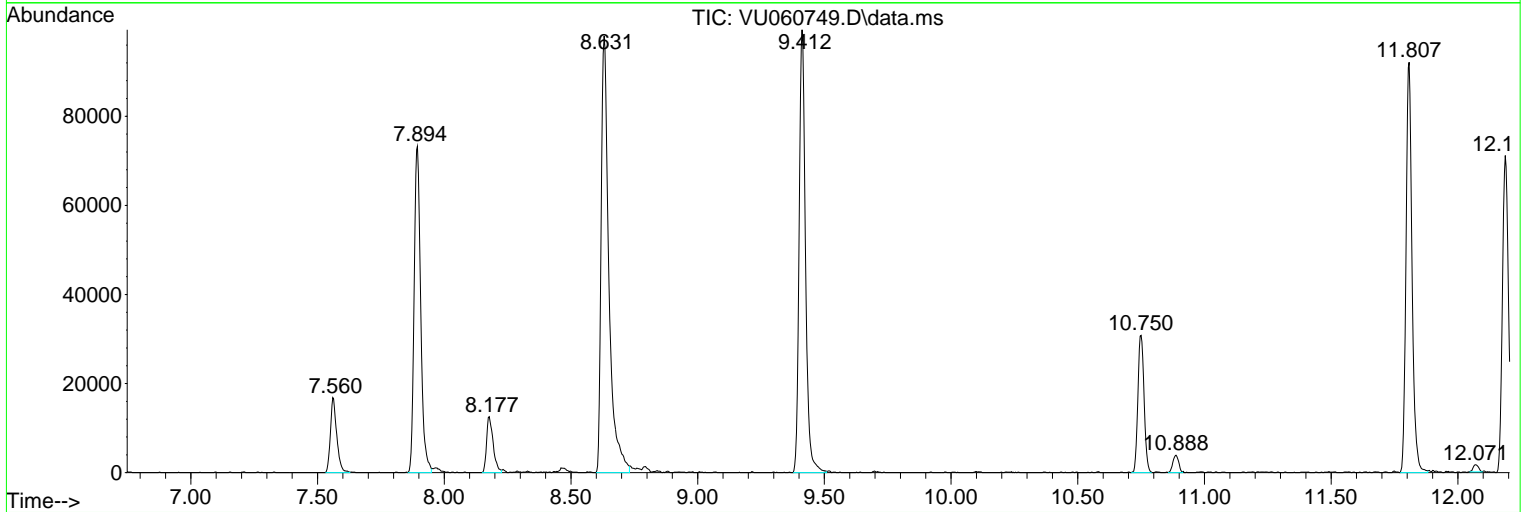
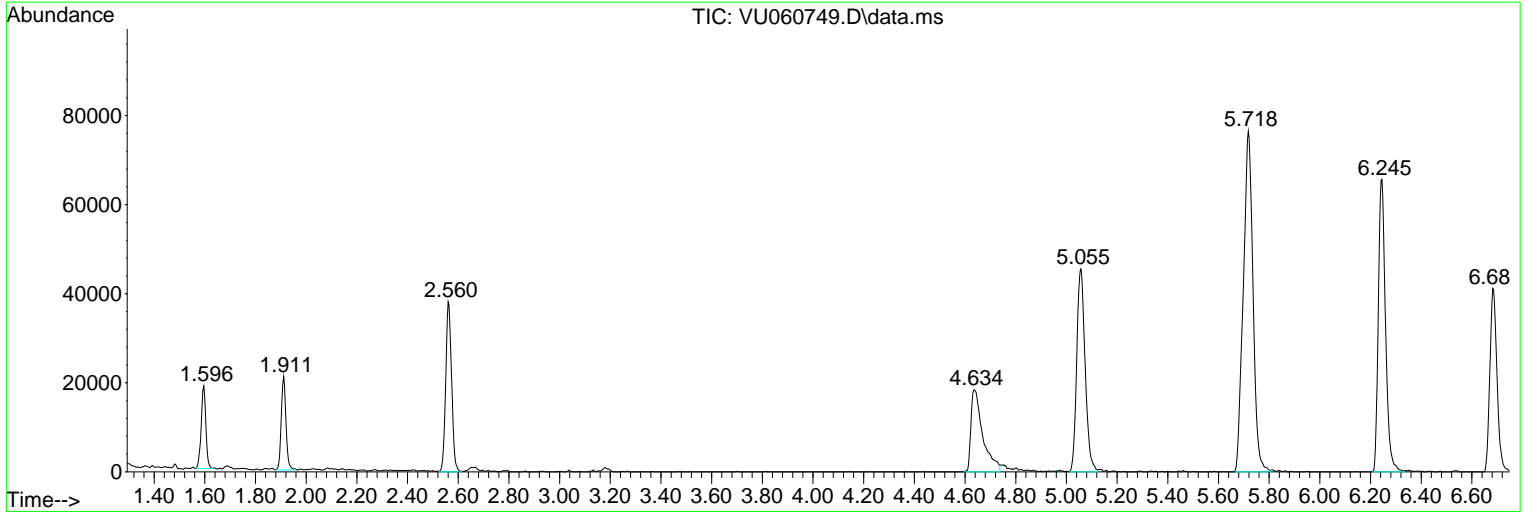
Sum of corrected areas: 1592824

Data Path : Z:\voasrv\HPCHEM1\MSVOA\_U\Data\VU091324\  
 Data File : VU060749.D  
 Acq On : 13 Sep 2024 13:29  
 Operator : MD/SY  
 Sample : P3918-11  
 Misc : 25.0mL/MSVOA\_U/WATER  
 ALS Vial : 5 Sample Multiplier: 1

Instrument :  
 MSVOA\_U  
 ClientSampleId :  
 COAM6

Quant Method : Z:\voasrv\HPCHEM1\MSVOA\_U\Method\SFAMUTR082324WMA.M  
 Quant Title : TRACE VOA SFAM1.0

TIC Library : C:\Database\NIST20.L  
 TIC Integration Parameters: LSCINT.P



Library Search Compound Report

Data Path : Z:\voasrv\HPCHEM1\MSVOA\_U\Data\VU091324\  
Data File : VU060749.D  
Acq On : 13 Sep 2024 13:29  
Operator : MD/SY  
Sample : P3918-11  
Misc : 25.0mL/MSVOA\_U/WATER  
ALS Vial : 5 Sample Multiplier: 1

Instrument :  
MSVOA\_U  
ClientSampleId :  
C0AM6

Quant Method : Z:\voasrv\HPCHEM1\MSVOA\_U\Method\SFAMUTR082324WMA.M  
Quant Title : TRACE VOA SFAM1.0

TIC Library : C:\Database\NIST20.L  
TIC Integration Parameters: LSCINT.P

No Library Search Compounds Detected

\*\*\*\*\*

Data Path : Z:\voasrv\HPCHEM1\MSVOA\_U\Data\VU091324\  
Data File : VU060749.D  
Acq On : 13 Sep 2024 13:29  
Operator : MD/SY  
Sample : P3918-11  
Misc : 25.0mL/MSVOA\_U/WATER  
ALS Vial : 5 Sample Multiplier: 1

Instrument :  
MSVOA\_U  
ClientSampleId :  
C0AM6

Quant Method : Z:\voasrv\HPCHEM1\MSVOA\_U\Method\SFAMUTR082324WMA.M  
Quant Title : TRACE VOA SFAM1.0

TIC Library : C:\Database\NIST0.L  
TIC Integration Parameters: LSCINT.P

TIC Top Hit name	RT	EstConc	Units	Response	--Internal Standard--			
					#	RT	Resp	Conc

---