

Data Path : Z:\voasrv\HPCHEM1\MSVOA\_U\Data\VU091324\  
 Data File : VU060767.D  
 Acq On : 13 Sep 2024 20:47  
 Operator : MD/SY  
 Sample : P3967-08  
 Misc : 25.0mL/MSVOA\_U/WATER  
 ALS Vial : 23 Sample Multiplier: 1

Instrument :  
 MSVOA\_U  
 ClientSampleId :  
 C0AR4

Integration Parameters: rteint.p  
 Integrator: RTE  
 Smoothing : ON  
 Sampling : 1  
 Start Thrs: 0.1  
 Stop Thrs : 0  
 Filtering: 5  
 Min Area: 3 % of largest Peak  
 Max Peaks: 100  
 Peak Location: TOP

If leading or trailing edge < 100 prefer < Baseline drop else tangent >  
 Peak separation: 5

Method : Z:\voasrv\HPCHEM1\MSVOA\_U\Method\SFAMUTR082324WMA.M  
 Title : TRACE VOA SFAM1.0

Signal : TIC: VU060767.D\data.ms

peak #	R.T. min	first scan	max scan	last scan	PK TY	peak height	corr. area	corr. % max.	% of total
1	1.489	57	62	66	rBV	3254	2883	1.33%	0.177%
2	1.515	66	70	76	rVB2	2105	2253	1.04%	0.138%
3	1.596	87	95	103	rBV	20358	22342	10.29%	1.368%
4	1.907	184	192	208	rBV	20729	27672	12.75%	1.694%
5	2.570	383	398	415	rBV5	80153	157168	72.42%	9.622%
6	3.358	633	643	658	rBB5	3859	8014	3.69%	0.491%
7	4.637	1031	1041	1065	rBV2	19582	57981	26.72%	3.550%
8	5.055	1158	1171	1189	rBV2	33487	74415	34.29%	4.556%
9	5.718	1360	1377	1406	rBV4	85502	217020	100.00%	13.286%
10	6.242	1529	1540	1559	rBV	83196	160425	73.92%	9.821%
11	6.538	1622	1632	1649	rBV2	29989	57648	26.56%	3.529%
12	6.682	1666	1677	1701	rBV2	51827	103098	47.51%	6.312%
13	7.560	1941	1950	1963	rBV3	14753	26103	12.03%	1.598%
14	7.891	2043	2053	2073	rBV	66631	118519	54.61%	7.256%
15	8.181	2134	2143	2158	rBV3	8315	14867	6.85%	0.910%
16	8.631	2273	2283	2314	rBV	63387	129630	59.73%	7.936%
17	9.412	2515	2526	2552	rBV	87177	153575	70.77%	9.402%
18	10.750	2932	2942	2958	rBB2	28715	46879	21.60%	2.870%
19	10.888	2974	2985	2994	rBB2	2696	3743	1.72%	0.229%
20	11.807	3260	3271	3293	rBV2	83515	140337	64.67%	8.592%
21	12.187	3378	3389	3410	rBV2	62640	106559	49.10%	6.524%
22	12.766	3565	3569	3576	rVB3	1664	2284	1.05%	0.140%

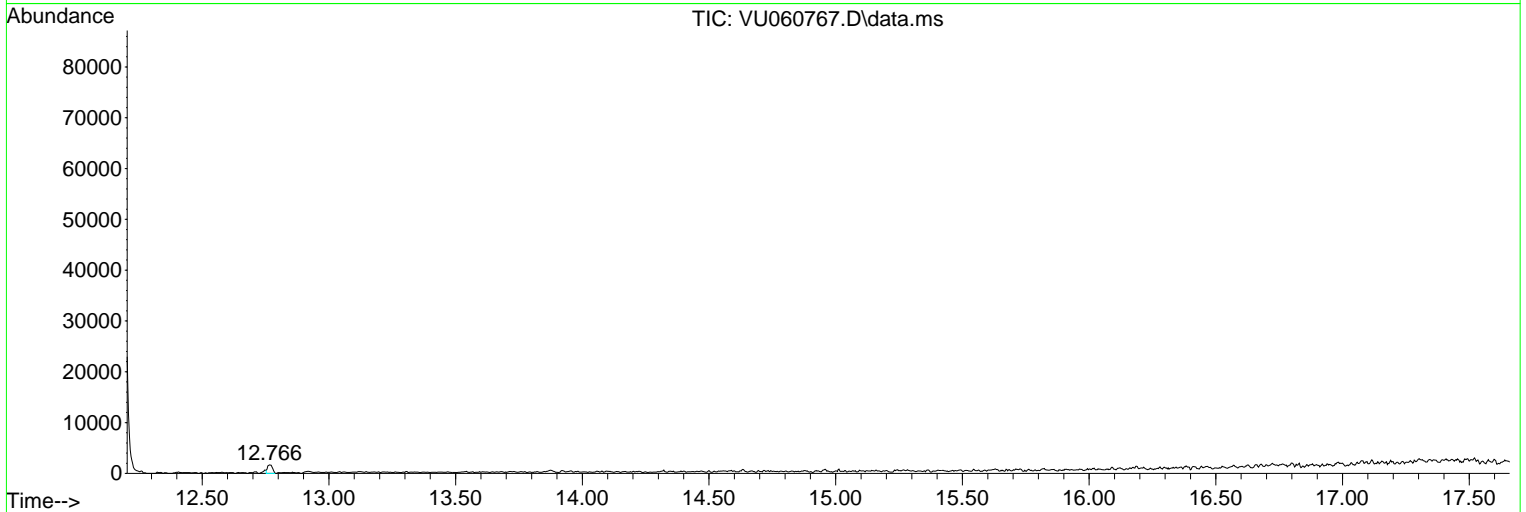
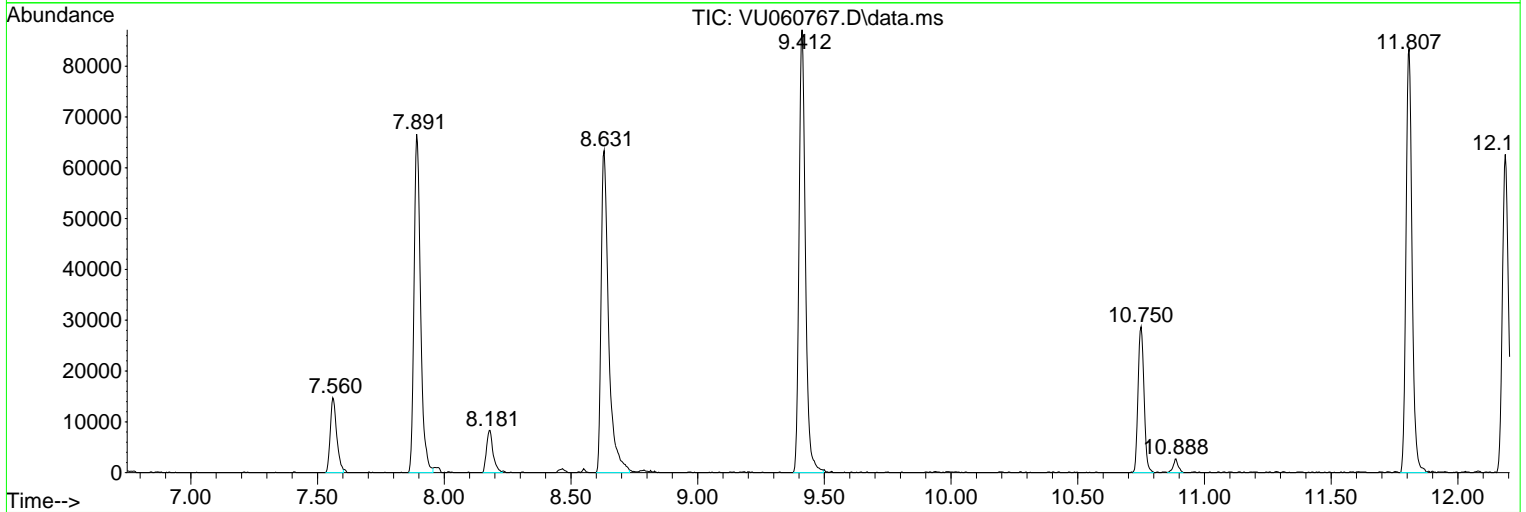
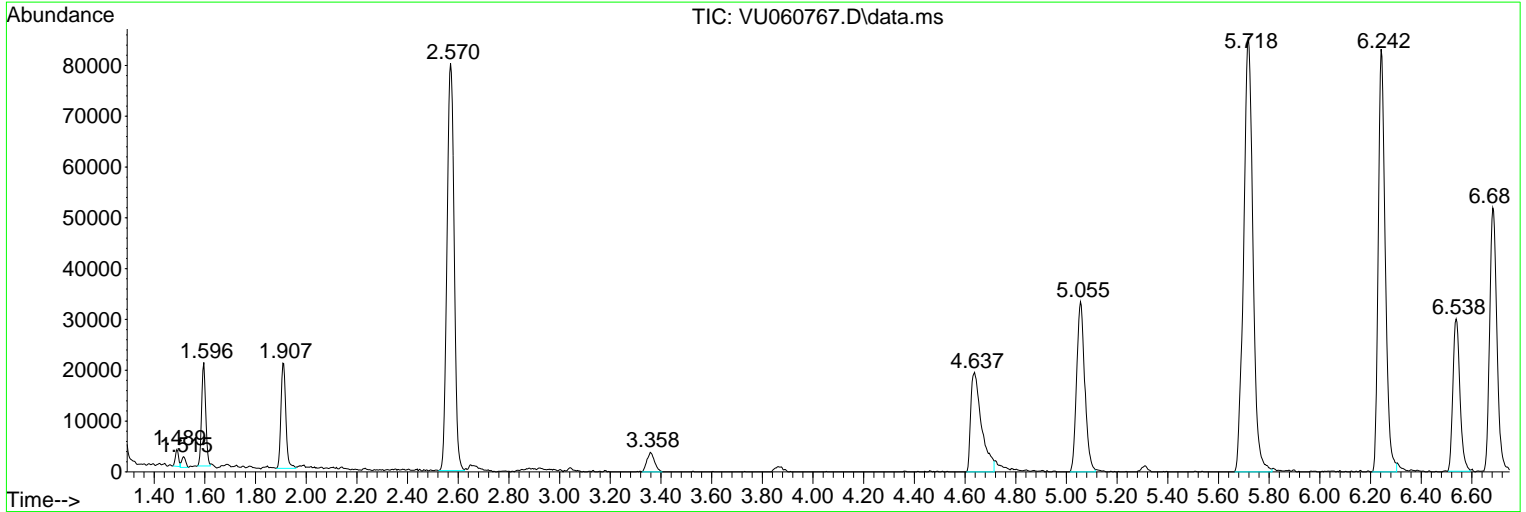
Sum of corrected areas: 1633415

Data Path : Z:\voasrv\HPCHEM1\MSVOA\_U\Data\VU091324\  
 Data File : VU060767.D  
 Acq On : 13 Sep 2024 20:47  
 Operator : MD/SY  
 Sample : P3967-08  
 Misc : 25.0mL/MSVOA\_U/WATER  
 ALS Vial : 23 Sample Multiplier: 1

Instrument :  
 MSVOA\_U  
 ClientSampleId :  
 C0AR4

Quant Method : Z:\voasrv\HPCHEM1\MSVOA\_U\Method\SFAMUTR082324WMA.M  
 Quant Title : TRACE VOA SFAM1.0

TIC Library : C:\Database\NIST20.L  
 TIC Integration Parameters: LSCINT.P



Library Search Compound Report

Data Path : Z:\voasrv\HPCHEM1\MSVOA\_U\Data\VU091324\  
Data File : VU060767.D  
Acq On : 13 Sep 2024 20:47  
Operator : MD/SY  
Sample : P3967-08  
Misc : 25.0mL/MSVOA\_U/WATER  
ALS Vial : 23 Sample Multiplier: 1

Instrument :  
MSVOA\_U  
ClientSampleId :  
C0AR4

Quant Method : Z:\voasrv\HPCHEM1\MSVOA\_U\Method\SFAMUTR082324WMA.M  
Quant Title : TRACE VOA SFAM1.0

TIC Library : C:\Database\NIST20.L  
TIC Integration Parameters: LSCINT.P

No Library Search Compounds Detected

\*\*\*\*\*

Data Path : Z:\voasrv\HPCHEM1\MSVOA\_U\Data\VU091324\  
Data File : VU060767.D  
Acq On : 13 Sep 2024 20:47  
Operator : MD/SY  
Sample : P3967-08  
Misc : 25.0mL/MSVOA\_U/WATER  
ALS Vial : 23 Sample Multiplier: 1

Instrument :  
MSVOA\_U  
ClientSampleId :  
C0AR4

Quant Method : Z:\voasrv\HPCHEM1\MSVOA\_U\Method\SFAMUTR082324WMA.M  
Quant Title : TRACE VOA SFAM1.0

TIC Library : C:\Database\NIST20.L  
TIC Integration Parameters: LSCINT.P

TIC Top Hit name	RT	EstConc	Units	Response	--Internal Standard--		
					#	RT	Resp Conc

---