

Data Path : Z:\voasrv\HPCHEM1\MSVOA_U\Data\VU091423\
 Data File : VU055325.D
 Acq On : 15 Sep 2023 00:10
 Operator : MD/SY
 Sample : 04380-08 40X
 Misc : 25.0mL/MSVOA_U/WATER
 ALS Vial : 28 Sample Multiplier: 1

Instrument :
 MSVOA_U
 ClientSampleId :
 BH4M1

Quant Time: Sep 15 06:46:21 2023
 Quant Method : Z:\voasrv\HPCHEM1\MSVOA_U\Method\SFAMUTR090123WMA.M
 Quant Title : TRACE VOA SFAM1.0
 QLast Update : Fri Sep 15 02:53:52 2023
 Response via : Initial Calibration

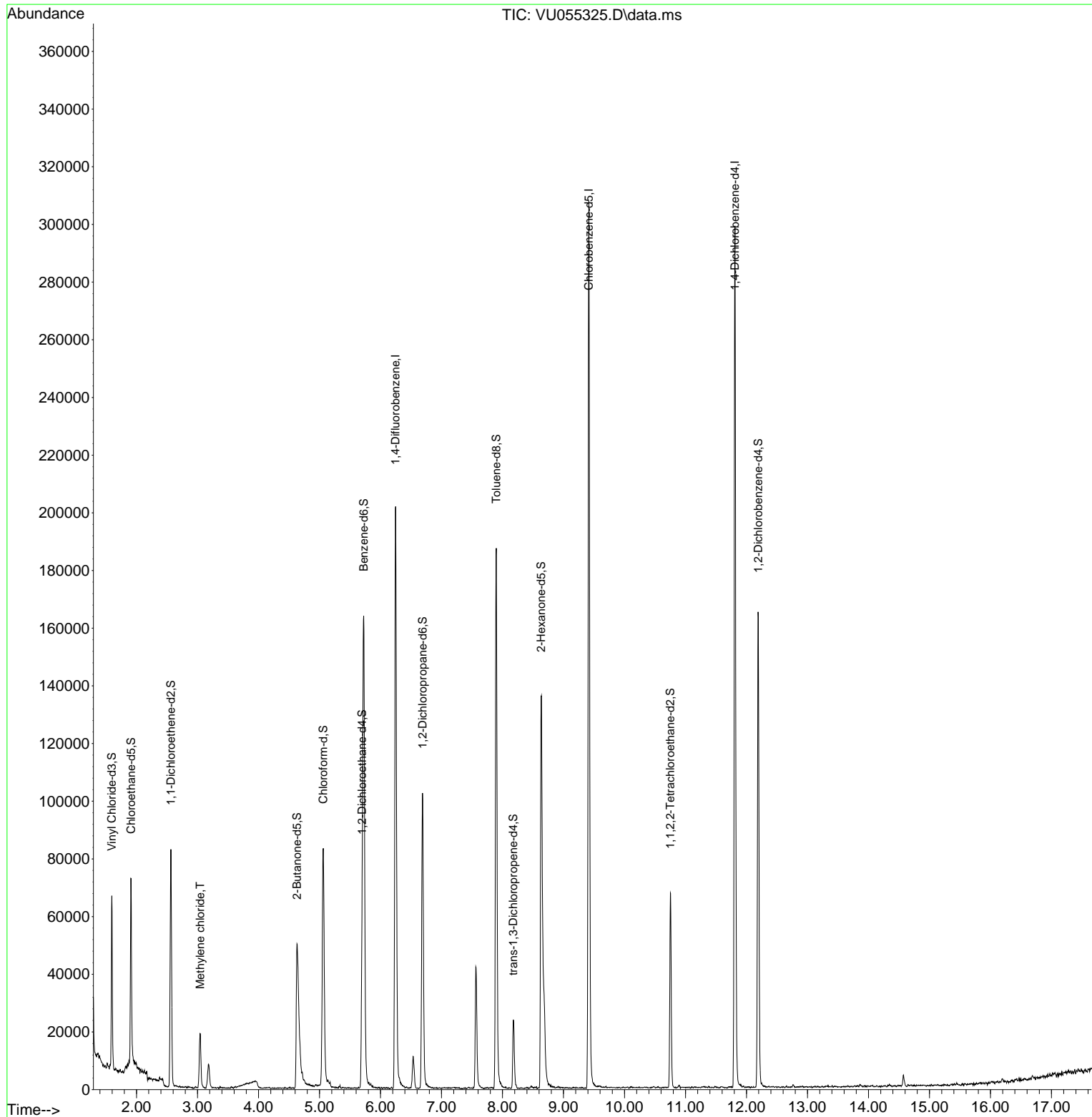
Compound	R.T.	QIon	Response	Conc	Units	Dev(Min)
Internal Standards						
1) 1,4-Difluorobenzene	6.245	114	163076	5.000	ug/L	0.00
28) Chlorobenzene-d5	9.415	117	171774	5.000	ug/L	0.00
58) 1,4-Dichlorobenzene-d4	11.811	152	78265	5.000	ug/L	0.00
System Monitoring Compounds						
4) Vinyl Chloride-d3	1.596	65	41981	5.493	ug/L	0.00
Spiked Amount	5.000	Range 40 - 130	Recovery	=	109.800%	
7) Chloroethane-d5	1.911	69	45189	5.108	ug/L	0.00
Spiked Amount	5.000	Range 65 - 130	Recovery	=	102.200%	
11) 1,1-Dichloroethene-d2	2.563	65	16072	3.691	ug/L	0.00
Spiked Amount	5.000	Range 60 - 125	Recovery	=	73.800%	
20) 2-Butanone-d5	4.631	46	77067	34.747	ug/L	0.00
Spiked Amount	50.000	Range 40 - 130	Recovery	=	69.500%	
24) Chloroform-d	5.062	84	79097	3.900	ug/L	0.00
Spiked Amount	5.000	Range 70 - 125	Recovery	=	78.000%	
26) 1,2-Dichloroethane-d4	5.698	65	41385	4.079	ug/L	0.00
Spiked Amount	5.000	Range 70 - 130	Recovery	=	81.600%	
32) Benzene-d6	5.724	84	157645	3.718	ug/L	0.00
Spiked Amount	5.000	Range 70 - 125	Recovery	=	74.400%	
36) 1,2-Dichloropropane-d6	6.689	67	48475	3.594	ug/L	0.00
Spiked Amount	5.000	Range 60 - 140	Recovery	=	71.800%	
41) Toluene-d8	7.898	98	131525	3.367	ug/L	0.00
Spiked Amount	5.000	Range 70 - 130	Recovery	=	67.400%#	
43) trans-1,3-Dichloroprop...	8.177	79	14571	3.923	ug/L	0.00
Spiked Amount	5.000	Range 55 - 130	Recovery	=	78.400%	
46) 2-Hexanone-d5	8.634	63	43318	28.730	ug/L	0.00
Spiked Amount	50.000	Range 45 - 130	Recovery	=	57.460%	
56) 1,1,2,2-Tetrachloroeth...	10.753	84	33405	3.522	ug/L	0.00
Spiked Amount	5.000	Range 65 - 120	Recovery	=	70.400%	
66) 1,2-Dichlorobenzene-d4	12.193	152	43127	3.775	ug/L	0.00
Spiked Amount	5.000	Range 80 - 120	Recovery	=	75.600%#	
Target Compounds						
16) Methylene chloride	3.046	84	9370	0.813	ug/L	99

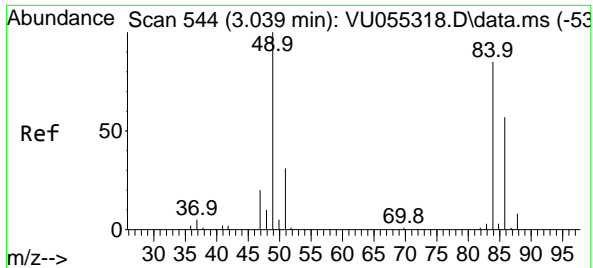
(#) = qualifier out of range (m) = manual integration (+) = signals summed

Data Path : Z:\voasrv\HPCHEM1\MSVOA_U\Data\VU091423\
Data File : VU055325.D
Acq On : 15 Sep 2023 00:10
Operator : MD/SY
Sample : 04380-08 40X
Misc : 25.0mL/MSVOA_U/WATER
ALS Vial : 28 Sample Multiplier: 1

Instrument :
MSVOA_U
ClientSampleId :
BH4M1

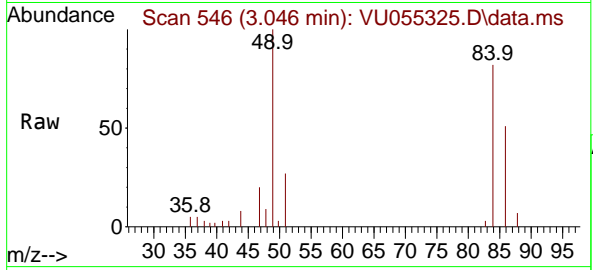
Quant Time: Sep 15 06:46:21 2023
Quant Method : Z:\voasrv\HPCHEM1\MSVOA_U\Method\SFAMUTR090123WMA.M
Quant Title : TRACE VOA SFAM1.0
QLast Update : Fri Sep 15 02:53:52 2023
Response via : Initial Calibration





#16
 Methylene chloride
 Concen: 0.813 ug/L
 RT: 3.046 min Scan# 54
 Delta R.T. 0.007 min
 Lab File: VU055325.D
 Acq: 15 Sep 2023 00:10

Instrument : MSVOA_U
 ClientSampleId : BH4M1



Tgt Ion: 84 Resp: 9370

Ion	Ratio	Lower	Upper
84	100		
86	61.9	43.4	80.6
49	126.5	87.7	162.9

