

Data Path : Z:\VOASRV\HPCHEM1\MSVOA U\DATA\VU091618\
 Data File : VU026786.D
 Acq On : 15 Sep 2018 18:51
 Operator : MD/SY
 Sample : J4920-06
 Misc : 25.0mL/MSVOA U/WATER
 ALS Vial : 20 Sample Multiplier: 1

Instrument :
 MSVOA_U
 ClientSampled :
 C0KZ4

Integration Parameters: rteint.p
 Integrator: RTE
 Smoothing : ON
 Sampling : 1
 Start Thrs: 0.1
 Stop Thrs : 0

Filtering: 5
 Min Area: 3 % of largest Peak
 Max Peaks: 100
 Peak Location: TOP

If leading or trailing edge < 100 prefer < Baseline drop else tangent >
 Peak separation: 5

Method : Z:\VOASRV\HPCHEM1\MSVOA_U\METHOD\SOMUTR091618WMA.M
 Title : TRACE VOA SOM01.0

Signal : TIC

peak #	R.T. min	first scan	max scan	last scan	PK TY	peak height	corr. area	corr. % max.	% of total
1	1.399	62	70	86	rBV	72136	74731	16.38%	2.127%
2	1.518	100	107	115	rBV	21745	24869	5.45%	0.708%
3	1.681	150	158	175	rVB	55798	69643	15.26%	1.982%
4	2.273	329	342	353	rBV	114066	173367	37.99%	4.935%
5	2.447	384	396	413	rBV	40564	71713	15.72%	2.041%
6	2.839	505	518	536	rVB2	18552	40639	8.91%	1.157%
7	4.199	925	941	951	rBV	61928	164274	36.00%	4.676%
8	4.649	1065	1081	1099	rVB	80611	184902	40.52%	5.263%
9	5.337	1273	1295	1320	rBV2	172921	456318	100.00%	12.989%
10	5.887	1451	1466	1486	rVB	156452	299791	65.70%	8.533%
11	6.334	1591	1605	1626	rBV	107494	209849	45.99%	5.973%
12	7.231	1868	1884	1899	rBV	44412	75788	16.61%	2.157%
13	7.565	1974	1988	2004	rBV	188603	322204	70.61%	9.171%
14	7.852	2066	2077	2094	rVB	27764	44795	9.82%	1.275%
15	8.225	2186	2193	2202	rVB2	6225	10100	2.21%	0.287%
16	8.324	2212	2224	2248	rBV	200036	355170	77.83%	10.109%
17	9.093	2451	2463	2492	rBV	190152	312472	68.48%	8.894%
18	10.434	2870	2880	2893	rBV	75198	117195	25.68%	3.336%
19	11.485	3192	3207	3227	rBV	155423	245888	53.89%	6.999%
20	11.861	3311	3324	3342	rBV	159881	259530	56.87%	7.387%

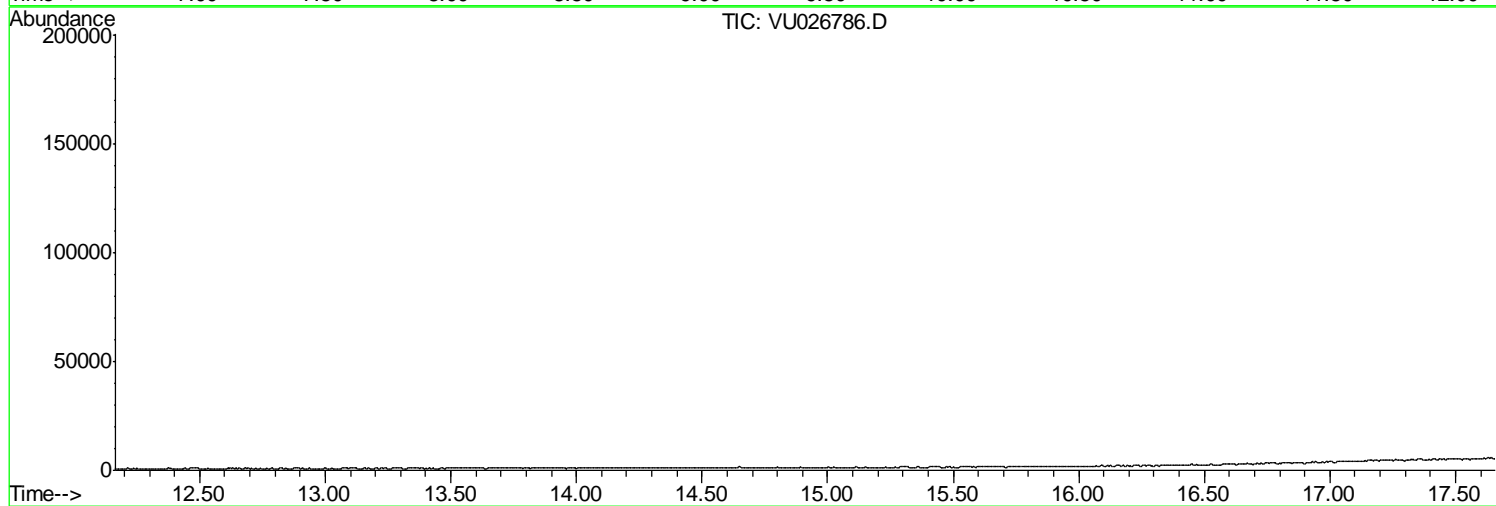
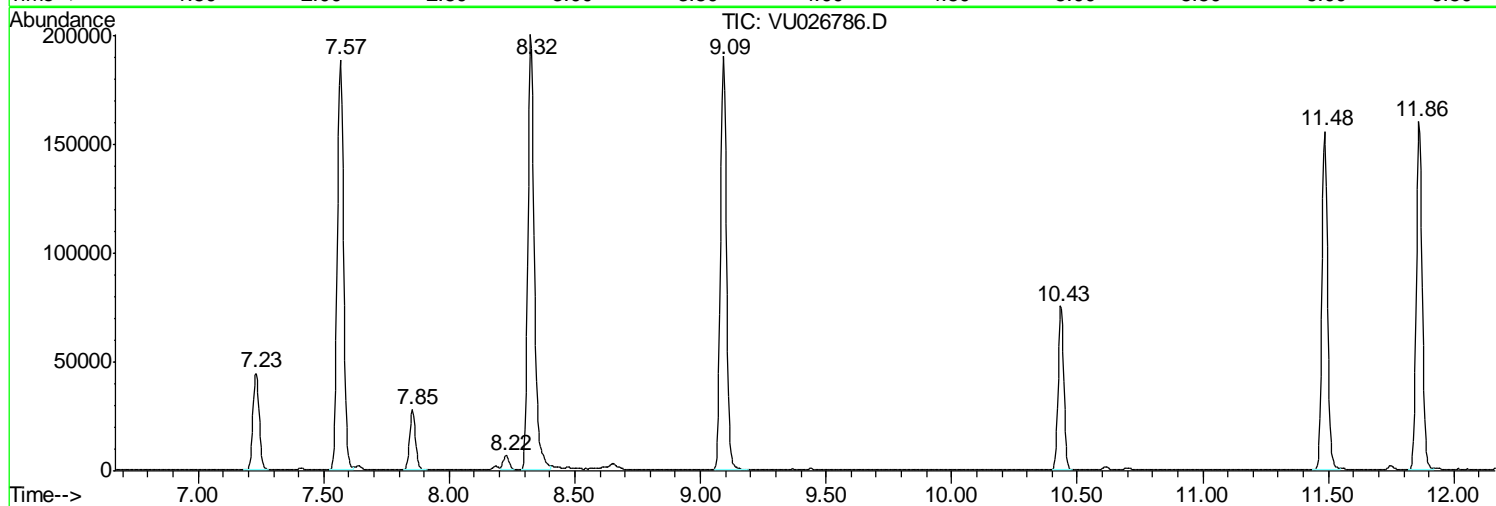
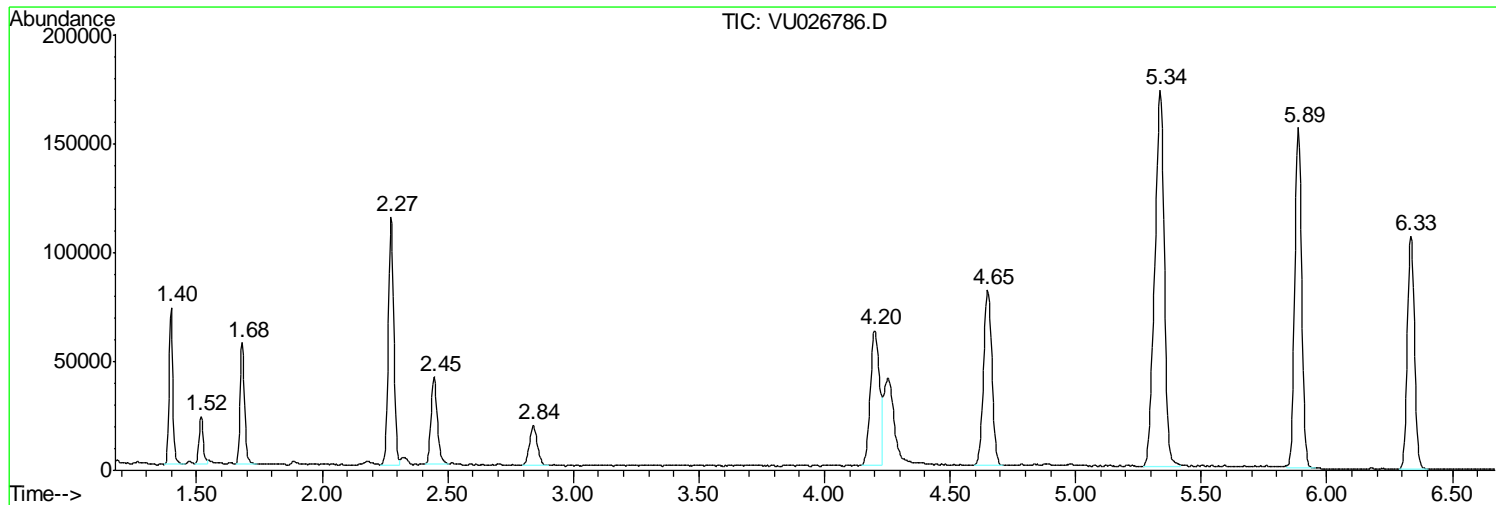
Sum of corrected areas: 3513238

Data Path : Z:\VOASRV\HPCHEM1\MSVOA U\DATA\VU091618\
Data File : VU026786.D
Acq On : 15 Sep 2018 18:51
Operator : MD/SY
Sample : J4920-06
Misc : 25.0mL/MSVOA U/WATER
ALS Vial : 20 Sample Multiplier: 1

Instrument :
MSVOA_U
ClientSampled :
C0KZ4

Quant Method : Z:\VOASRV\HPCHEM1\MSVOA_U\METHOD\SOMUTR091618WMA.M
Quant Title : TRACE VOA SOM01.0

TIC Library : C:\DATABASE\NIST11.L
TIC Integration Parameters: LSCINT.P



Data Path : Z:\VOASRV\HPCHEM1\MSVOA U\DATA\VU091618\
 Data File : VU026786.D
 Acq On : 15 Sep 2018 18:51
 Operator : MD/SY
 Sample : J4920-06
 Misc : 25.0mL/MSVOA U/WATER
 ALS Vial : 20 Sample Multiplier: 1

Instrument :
 MSVOA_U
 ClientSampleID :
 C0KZ4

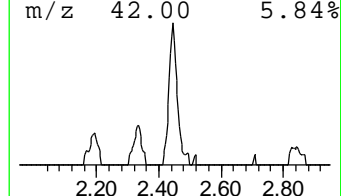
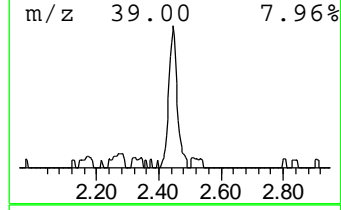
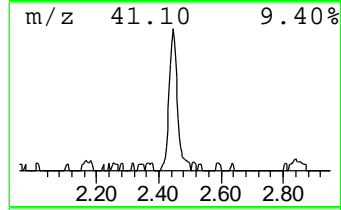
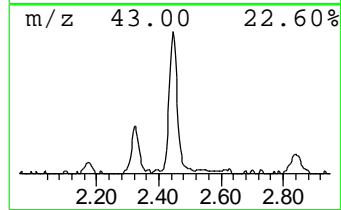
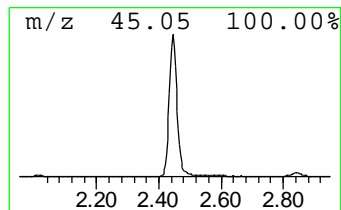
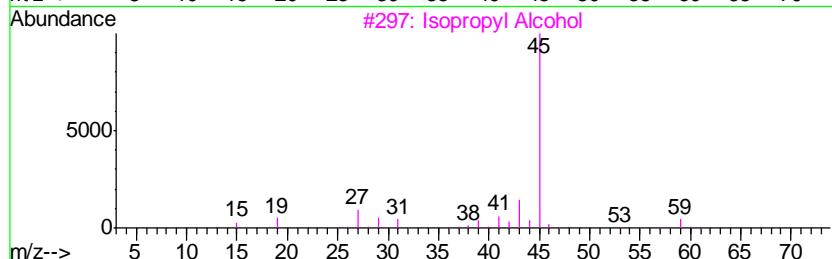
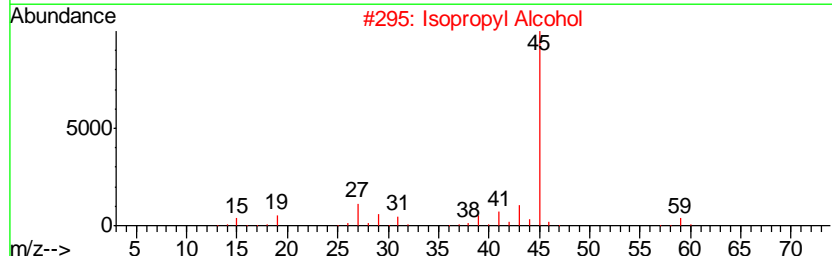
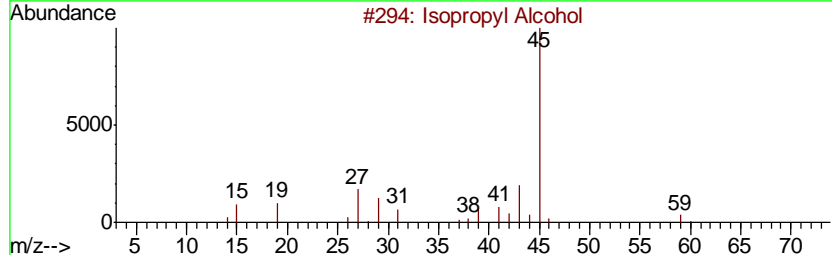
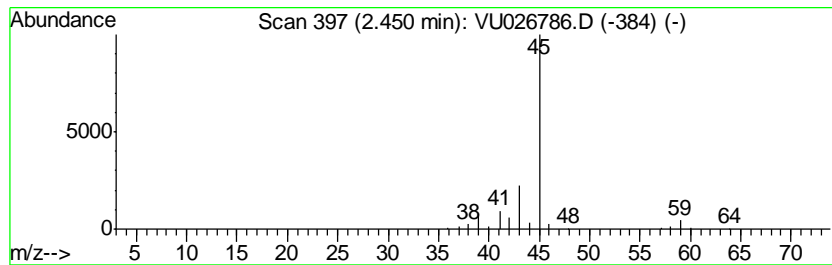
Quant Method : Z:\VOASRV\HPCHEM1\MSVOA_U\METHOD\SOMUTR091618WMA.M
 Quant Title : TRACE VOA SOM01.0

TIC Library : C:\DATABASE\NIST11.L
 TIC Integration Parameters: LSCINT.P

 Peak Number 1 Isopropyl Alcohol Concentration Rank 2

R.T.	EstConc	Area	Relative to ISTD	R.T.
2.45	1.20 ug/L	71713	1,4-Difluorobenzene	5.89

Hit#	of	Tentative ID	MW	MolForm	CAS#	Qual
1	5	Isopropyl Alcohol	60	C3H8O	000067-63-0	78
2		Isopropyl Alcohol	60	C3H8O	000067-63-0	72
3		Isopropyl Alcohol	60	C3H8O	000067-63-0	72
4		Isopropyl Alcohol	60	C3H8O	000067-63-0	9
5		Hydrazine, 1,2-dimethyl-	60	C2H8N2	000540-73-8	9



Data Path : Z:\VOASRV\HPCHEM1\MSVOA U\DATA\VU091618\
 Data File : VU026786.D
 Acq On : 15 Sep 2018 18:51
 Operator : MD/SY
 Sample : J4920-06
 Misc : 25.0mL/MSVOA U/WATER
 ALS Vial : 20 Sample Multiplier: 1

Instrument :
 MSVOA_U
 ClientSampleID :
 C0KZ4

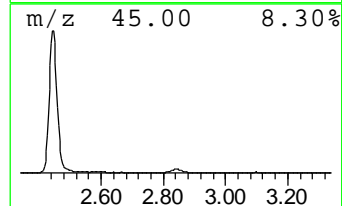
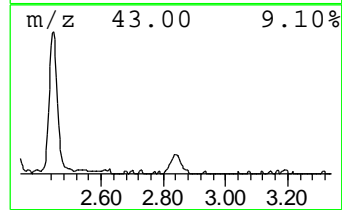
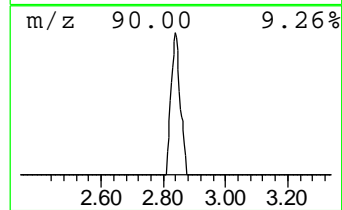
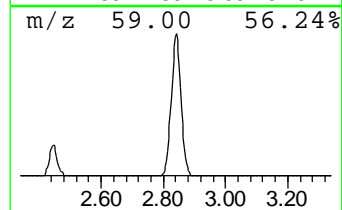
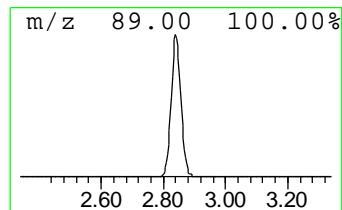
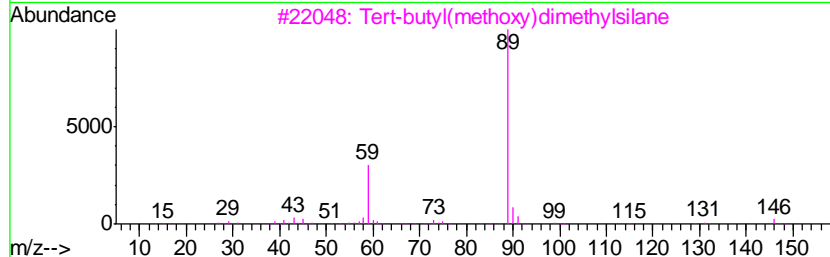
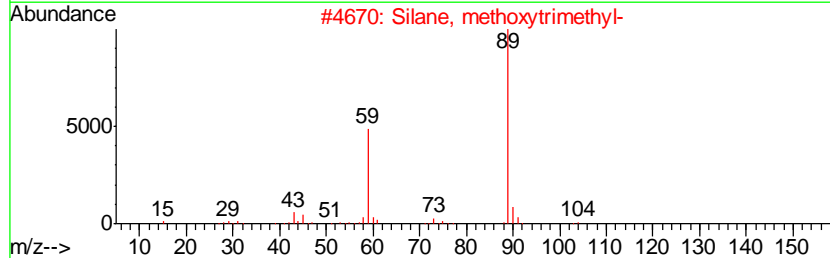
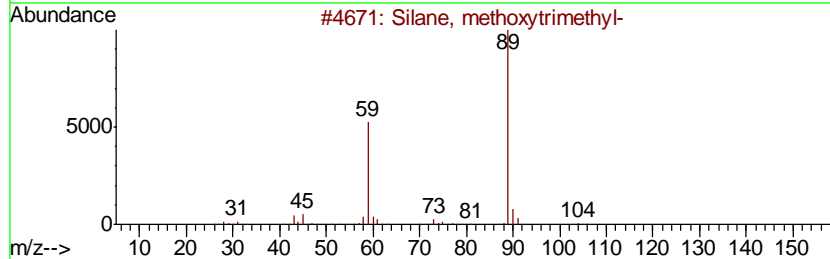
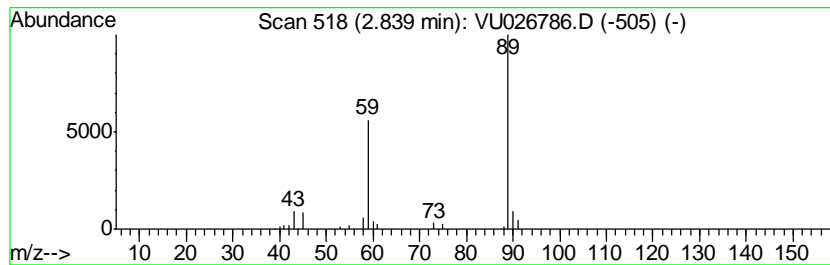
Quant Method : Z:\VOASRV\HPCHEM1\MSVOA_U\METHOD\SOMUTR091618WMA.M
 Quant Title : TRACE VOA SOM01.0

TIC Library : C:\DATABASE\NIST11.L
 TIC Integration Parameters: LSCINT.P

 Peak Number 2 Silane, methoxytrimethyl- Concentration Rank 3

R.T.	EstConc	Area	Relative to ISTD	R.T.
2.84	0.68 ug/L	40639	1,4-Difluorobenzene	5.89

Hit#	of	Tentative ID	MW	MolForm	CAS#	Qual
1	5	Silane, methoxytrimethyl-	104	C4H12OSi	001825-61-2	83
2		Silane, methoxytrimethyl-	104	C4H12OSi	001825-61-2	83
3		Tert-butyl(methoxy)dimethylsilane	146	C7H18OSi	1000364-10-7	83
4		Silane, (2-methoxyethyl)trimethyl-	132	C6H16OSi	018173-63-2	78
5		Tricyclo[5.2.2.0(2,6)]undecan-11...	352	C18H24O7	1000155-17-7	64



Data Path : Z:\VOASRV\HPCHEM1\MSVOA_U\DATA\VU091618\
Data File : VU026786.D
Acq On : 15 Sep 2018 18:51
Operator : MD/SY
Sample : J4920-06
Misc : 25.0mL/MSVOA_U/WATER
ALS Vial : 20 Sample Multiplier: 1

Instrument :
MSVOA_U
ClientSampleId :
C0KZ4

Quant Method : Z:\VOASRV\HPCHEM1\MSVOA_U\METHOD\SOMUTR091618WMA.M
Quant Title : TRACE VOA SOM01.0

TIC Library : C:\DATABASE\NIST11.L
TIC Integration Parameters: LSCINT.P

TIC Top Hit name	RT	EstConc	Units	Response	--Internal Standard--			
					#	RT	Resp	Conc
Isopropyl Alcohol	2.45	1.2	ug/L	71713	1	5.89	299791	5.0
Silane, methoxytr...	2.84	0.7	ug/L	40639	1	5.89	299791	5.0