

Data Path : Z:\voasrv\HPCHEM1\MSVOA U\Data\VU091618\  
 Data File : VU026809.D  
 Acq On : 16 Sep 2018 05:40  
 Operator : MD/SY  
 Sample : J4918-16  
 Misc : 25.0mL/MSVOA U/WATER  
 ALS Vial : 43 Sample Multiplier: 1

Instrument :  
 MSVOA\_U  
 ClientSampleId :  
 C0KY6

Integration Parameters: rteint.p  
 Integrator: RTE  
 Smoothing : ON  
 Sampling : 1  
 Start Thrs: 0.1  
 Stop Thrs : 0

Filtering: 5  
 Min Area: 3 % of largest Peak  
 Max Peaks: 100  
 Peak Location: TOP

If leading or trailing edge < 100 prefer < Baseline drop else tangent >  
 Peak separation: 5

Method : Z:\VOASRV\HPCHEM1\MSVOA\_U\METHOD\SOMUTR091618WMA.M  
 Title : TRACE VOA SOM01.0

Signal : TIC

peak #	R.T. min	first scan	max scan	last scan	PK TY	peak height	corr. area	corr. % max.	% of total
1	1.399	63	70	82	rBV	64453	67588	15.48%	2.040%
2	1.517	99	107	118	rVB	15974	18583	4.26%	0.561%
3	1.681	150	158	172	rVB	54315	65907	15.09%	1.989%
4	2.276	331	343	354	rBV	109257	167636	38.39%	5.059%
5	2.476	391	405	426	rBV2	18148	55102	12.62%	1.663%
6	2.842	507	519	533	rVB	7957	17008	3.90%	0.513%
7	4.205	925	943	952	rBV	59266	164849	37.76%	4.975%
8	4.649	1066	1081	1101	rVB	78544	182077	41.70%	5.495%
9	5.337	1273	1295	1313	rBV2	166261	436620	100.00%	13.176%
10	5.887	1452	1466	1492	rVB	146466	279789	64.08%	8.443%
11	6.186	1546	1559	1572	rBV2	30364	57726	13.22%	1.742%
12	6.334	1591	1605	1625	rVB2	102746	200848	46.00%	6.061%
13	7.231	1873	1884	1899	rVB	39188	66271	15.18%	2.000%
14	7.565	1975	1988	2004	rBV	170257	293746	67.28%	8.865%
15	7.852	2064	2077	2092	rBV2	23923	39137	8.96%	1.181%
16	8.324	2212	2224	2255	rBV	192974	337922	77.39%	10.198%
17	9.093	2449	2463	2486	rBV	175763	287975	65.96%	8.691%
18	10.434	2869	2880	2897	rBV	72700	114604	26.25%	3.459%
19	11.485	3194	3207	3224	rBV	140928	220559	50.52%	6.656%
20	11.861	3312	3324	3341	rBV	153920	239723	54.90%	7.234%

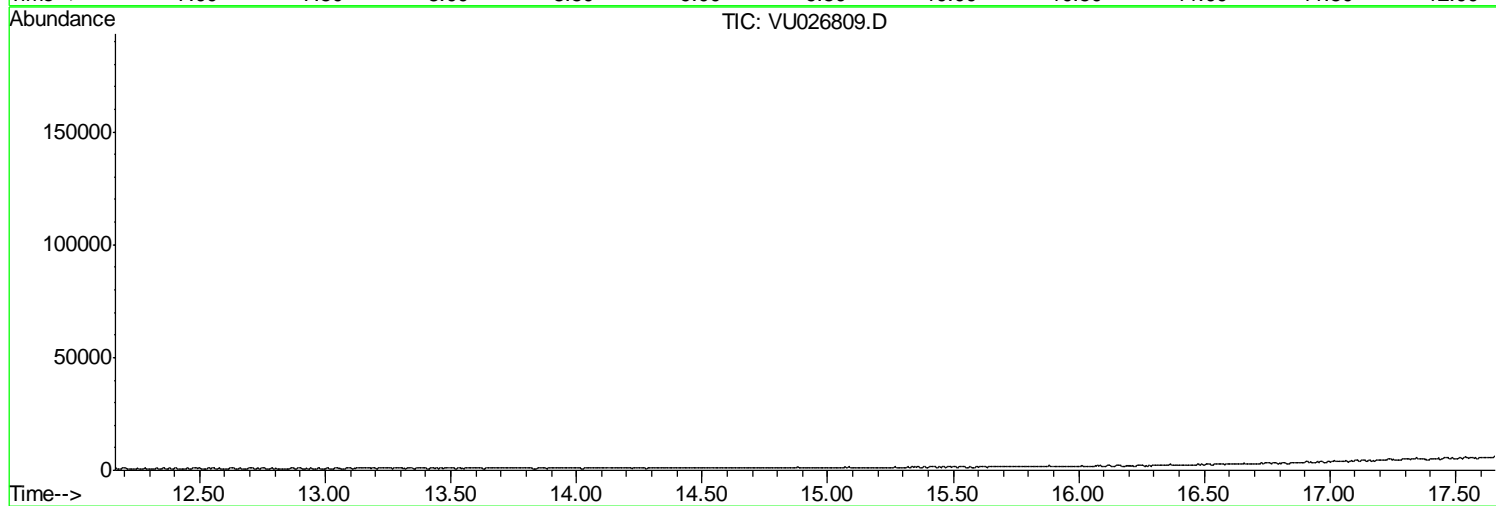
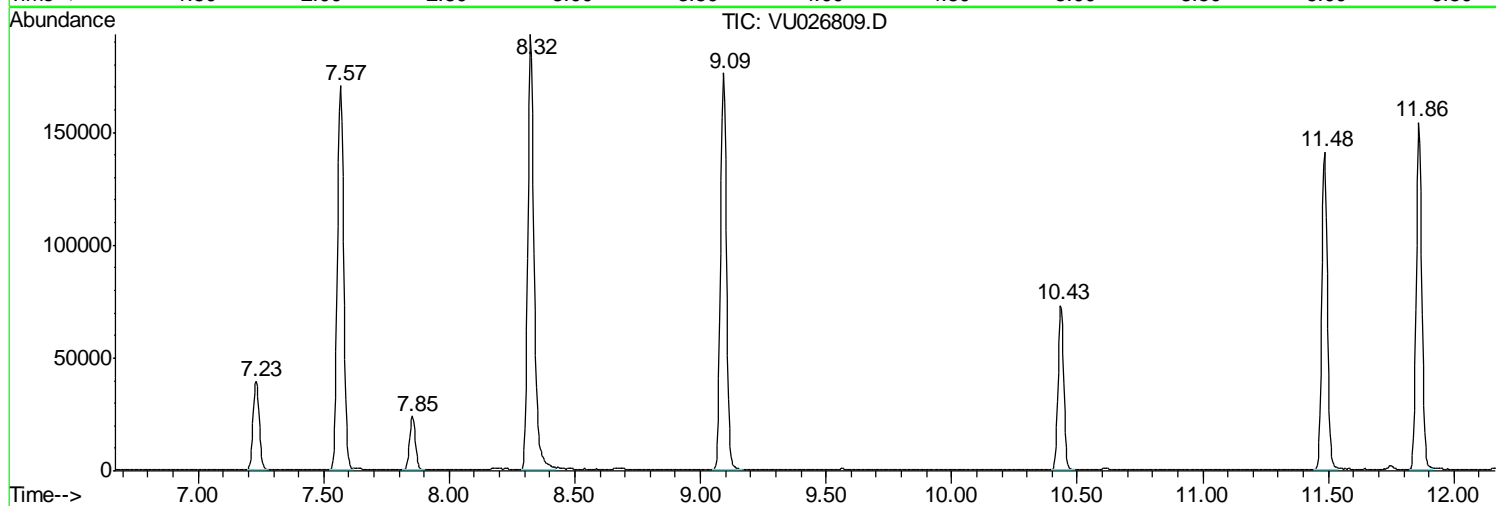
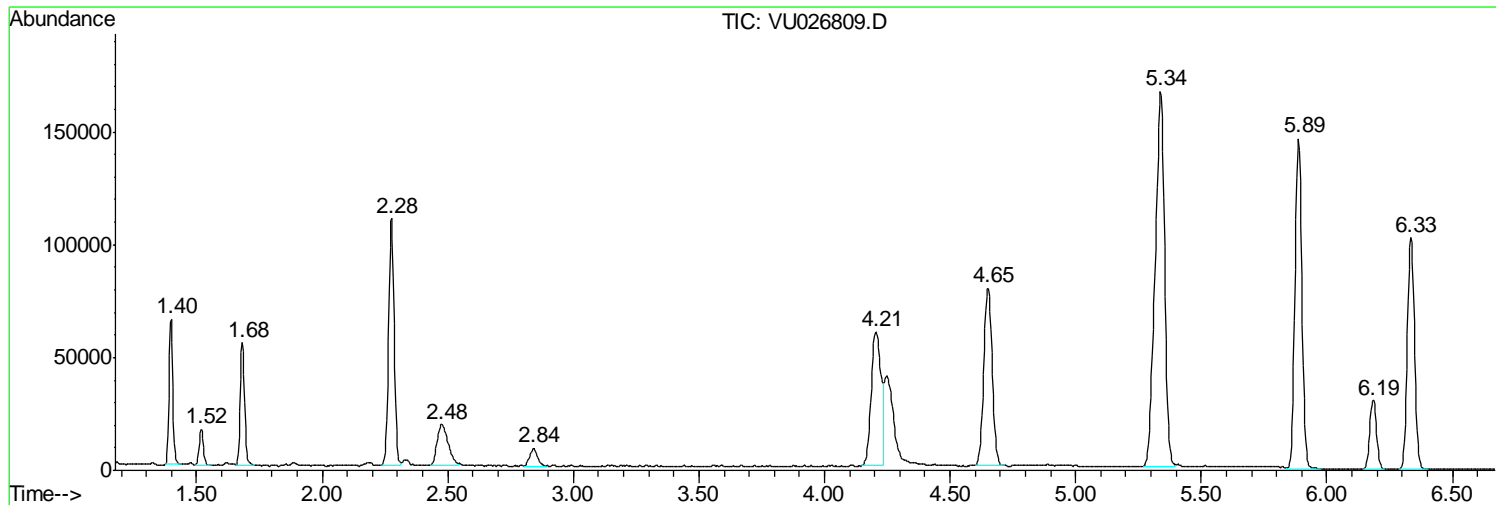
Sum of corrected areas: 3313670

Data Path : Z:\voasrv\HPCHEM1\MSVOA U\Data\VU091618\  
Data File : VU026809.D  
Acq On : 16 Sep 2018 05:40  
Operator : MD/SY  
Sample : J4918-16  
Misc : 25.0mL/MSVOA U/WATER  
ALS Vial : 43 Sample Multiplier: 1

Instrument :  
MSVOA\_U  
ClientSampled :  
C0KY6

Quant Method : Z:\VOASRV\HPCHEM1\MSVOA\_U\METHOD\SOMUTR091618WMA.M  
Quant Title : TRACE VOA SOM01.0

TIC Library : C:\DATABASE\NIST11.L  
TIC Integration Parameters: LSCINT.P



Data Path : Z:\voasrv\HPCHEM1\MSVOA U\Data\VU091618\  
 Data File : VU026809.D  
 Acq On : 16 Sep 2018 05:40  
 Operator : MD/SY  
 Sample : J4918-16  
 Misc : 25.0mL/MSVOA U/WATER  
 ALS Vial : 43 Sample Multiplier: 1

Instrument :  
 MSVOA\_U  
 ClientSampled :  
 C0KY6

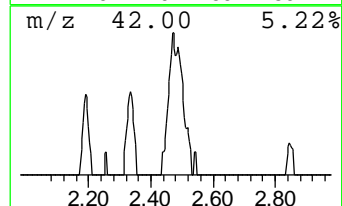
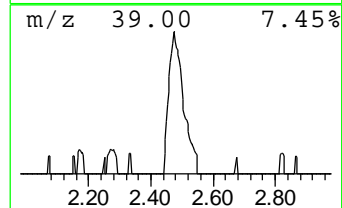
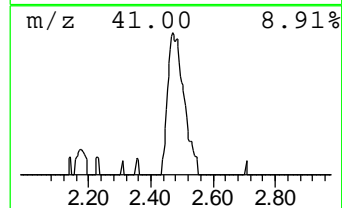
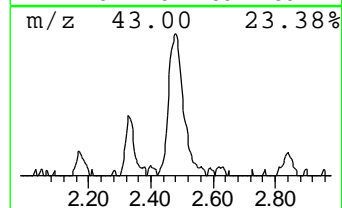
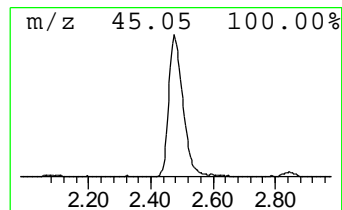
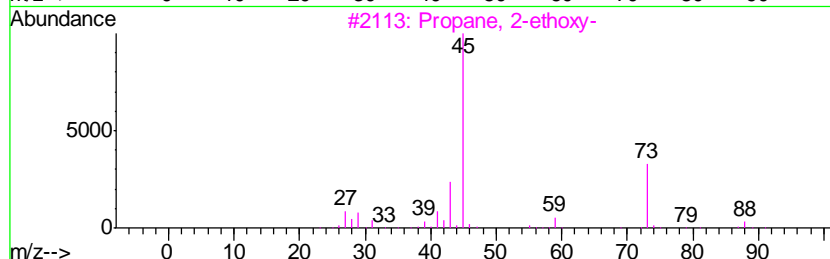
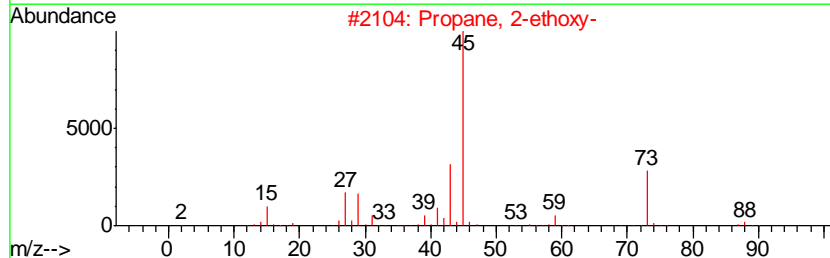
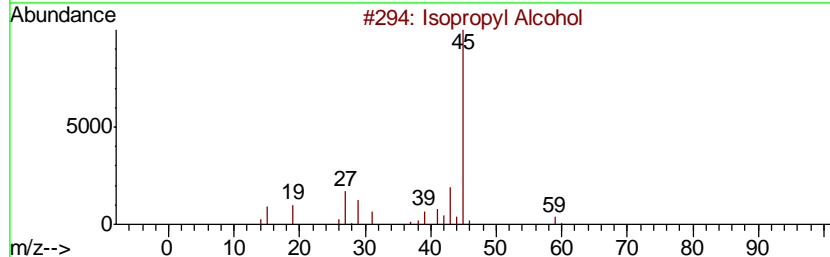
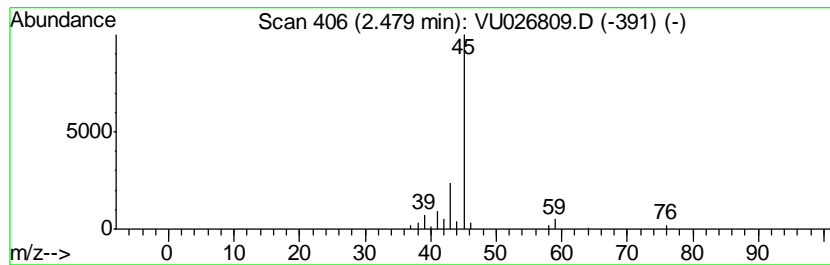
Quant Method : Z:\VOASRV\HPCHEM1\MSVOA\_U\METHOD\SOMUTR091618WMA.M  
 Quant Title : TRACE VOA SOM01.0

TIC Library : C:\DATABASE\NIST11.L  
 TIC Integration Parameters: LSCINT.P

\*\*\*\*\*  
 Peak Number 1 Isopropyl Alcohol Concentration Rank 2

R.T.	EstConc	Area	Relative to ISTD	R.T.
2.48	0.98 ug/L	55102	1,4-Difluorobenzene	5.89

Hit#	of	Tentative ID	MW	MolForm	CAS#	Qual
1	5	Isopropyl Alcohol	60	C3H8O	000067-63-0	64
2		Propane, 2-ethoxy-	88	C5H12O	000625-54-7	43
3		Propane, 2-ethoxy-	88	C5H12O	000625-54-7	43
4		Isopropyl Alcohol	60	C3H8O	000067-63-0	43
5		Formic acid, 1-methylethyl ester	88	C4H8O2	000625-55-8	40



Data Path : Z:\voasrv\HPCHEM1\MSVOA\_U\Data\VU091618\  
Data File : VU026809.D  
Acq On : 16 Sep 2018 05:40  
Operator : MD/SY  
Sample : J4918-16  
Misc : 25.0mL/MSVOA\_U/WATER  
ALS Vial : 43 Sample Multiplier: 1

Instrument :  
MSVOA\_U  
ClientSampleId :  
C0KY6

Quant Method : Z:\VOASRV\HPCHEM1\MSVOA\_U\METHOD\SOMUTR091618WMA.M  
Quant Title : TRACE VOA SOM01.0

TIC Library : C:\DATABASE\NIST11.L  
TIC Integration Parameters: LSCINT.P

TIC Top Hit name	RT	EstConc	Units	Response	--Internal Standard--			
					#	RT	Resp	Conc
Isopropyl Alcohol	2.48	1.0	ug/L	55102	1	5.89	279789	5.0