

Data Path : Z:\VOASRV\HPCHEM1\MSVOA U\DATA\VU091619\
 Data File : VU034593.D
 Acq On : 17 Sep 2019 03:07
 Operator : JC/SP
 Sample : K4838-17
 Misc : 5.0mL/MSVOA U/WATER
 ALS Vial : 41 Sample Multiplier: 1

Instrument :
 MSVOA_U
 ClientSampled :
 COML9

Integration Parameters: LSCINT.P

Integrator: RTE
 Smoothing : OFF
 Sampling : 1
 Start Thrs: 0.2
 Stop Thrs : 0

Filtering: 5
 Min Area: 0 % of largest Peak
 Max Peaks: 100
 Peak Location: TOP

If leading or trailing edge < 100 prefer < Baseline drop else tangent >
 Peak separation: 5

Method : Z:\VOASRV\HPCHEM1\MSVOA_U\METHOD\SOMULM091619WMA.M
 Title : VOC Analysis

Signal : TIC

| peak # | R.T. min | first scan | max scan | last scan | PK TY | peak height | corr. area | corr. % max. | % of total |
|--------|----------|------------|----------|-----------|-------|-------------|------------|--------------|------------|
| 1 | 1.177 | 23 | 27 | 36 | rVB2 | 5642 | 5698 | 0.64% | 0.072% |
| 2 | 1.392 | 87 | 94 | 102 | rBV | 94840 | 99398 | 11.15% | 1.249% |
| 3 | 1.672 | 174 | 181 | 196 | rVB | 78031 | 99623 | 11.18% | 1.252% |
| 4 | 2.257 | 354 | 363 | 375 | rVB | 172855 | 267403 | 30.00% | 3.361% |
| 5 | 2.428 | 402 | 416 | 439 | rBV | 52916 | 99762 | 11.19% | 1.254% |
| 6 | 2.820 | 525 | 538 | 552 | rBV | 7365 | 17306 | 1.94% | 0.218% |
| 7 | 3.186 | 647 | 652 | 653 | rBV2 | 790 | 603 | 0.07% | 0.008% |
| 8 | 3.270 | 672 | 678 | 681 | rBV6 | 1215 | 1151 | 0.13% | 0.014% |
| 9 | 3.289 | 681 | 684 | 687 | rVB3 | 770 | 524 | 0.06% | 0.007% |
| 10 | 3.421 | 721 | 725 | 729 | rBV5 | 618 | 581 | 0.07% | 0.007% |
| 11 | 3.691 | 803 | 809 | 814 | rBV3 | 711 | 1113 | 0.12% | 0.014% |
| 12 | 3.878 | 864 | 867 | 871 | rVB3 | 599 | 460 | 0.05% | 0.006% |
| 13 | 3.907 | 871 | 876 | 878 | rBV2 | 573 | 504 | 0.06% | 0.006% |
| 14 | 4.003 | 903 | 906 | 908 | rBV | 614 | 486 | 0.05% | 0.006% |
| 15 | 4.019 | 908 | 911 | 915 | rVB5 | 713 | 499 | 0.06% | 0.006% |
| 16 | 4.042 | 915 | 918 | 921 | rVB3 | 692 | 478 | 0.05% | 0.006% |
| 17 | 4.087 | 927 | 932 | 937 | rBV5 | 928 | 1096 | 0.12% | 0.014% |
| 18 | 4.151 | 937 | 952 | 993 | rBV | 95756 | 294771 | 33.07% | 3.705% |
| 19 | 4.405 | 1028 | 1031 | 1034 | rBV4 | 813 | 561 | 0.06% | 0.007% |
| 20 | 4.453 | 1043 | 1046 | 1050 | rBV4 | 881 | 630 | 0.07% | 0.008% |
| 21 | 4.563 | 1076 | 1080 | 1082 | rVB3 | 628 | 455 | 0.05% | 0.006% |
| 22 | 4.624 | 1082 | 1099 | 1122 | rBV | 158580 | 384096 | 43.09% | 4.828% |
| 23 | 4.862 | 1170 | 1173 | 1174 | rVV3 | 855 | 477 | 0.05% | 0.006% |
| 24 | 4.891 | 1174 | 1182 | 1191 | rVB7 | 3293 | 6335 | 0.71% | 0.080% |
| 25 | 4.952 | 1199 | 1201 | 1207 | rVB4 | 988 | 743 | 0.08% | 0.009% |
| 26 | 4.987 | 1207 | 1212 | 1218 | rVB5 | 1361 | 1618 | 0.18% | 0.020% |
| 27 | 5.026 | 1218 | 1224 | 1228 | rBV6 | 1011 | 1025 | 0.11% | 0.013% |
| 28 | 5.054 | 1228 | 1233 | 1236 | rVB7 | 616 | 522 | 0.06% | 0.007% |
| 29 | 5.132 | 1252 | 1257 | 1263 | rVB3 | 612 | 787 | 0.09% | 0.010% |
| 30 | 5.164 | 1263 | 1267 | 1272 | rBV4 | 612 | 694 | 0.08% | 0.009% |
| 31 | 5.222 | 1282 | 1285 | 1288 | rBV4 | 841 | 572 | 0.06% | 0.007% |
| 32 | 5.318 | 1291 | 1315 | 1340 | rBV2 | 299485 | 891343 | 100.00% | 11.204% |
| 33 | 5.617 | 1404 | 1408 | 1410 | rBV4 | 842 | 519 | 0.06% | 0.007% |
| 34 | 5.688 | 1427 | 1430 | 1435 | rBV5 | 671 | 662 | 0.07% | 0.008% |

Data Path : Z:\VOASRV\HPCHEM1\MSVOA U\DATA\VU091619\
 Data File : VU034593.D
 Acq On : 17 Sep 2019 03:07
 Operator : JC/SP
 Sample : K4838-17
 Misc : 5.0mL/MSVOA U/WATER
 ALS Vial : 41 Sample Multiplier: 1

Instrument :
 MSVOA_U
 ClientSampleId :
 COML9

Integration Parameters: LSCINT.P

Integrator: RTE
 Smoothing : OFF
 Sampling : 1
 Start Thrs: 0.2
 Stop Thrs : 0

Filtering: 5
 Min Area: 0 % of largest Peak
 Max Peaks: 100
 Peak Location: TOP

If leading or trailing edge < 100 prefer < Baseline drop else tangent >
 Peak separation: 5

Method : Z:\VOASRV\HPCHEM1\MSVOA_U\METHOD\SOMULM091619WMA.M
 Title : VOC Analysis

| | | | | | | | | | |
|----|--------|------|------|------|------|--------|--------|--------|---------|
| 35 | 5.720 | 1437 | 1440 | 1443 | rVB4 | 830 | 642 | 0.07% | 0.008% |
| 36 | 5.865 | 1469 | 1485 | 1501 | rBV | 325095 | 644458 | 72.30% | 8.101% |
| 37 | 6.164 | 1567 | 1578 | 1598 | rVB | 137476 | 268061 | 30.07% | 3.369% |
| 38 | 6.308 | 1610 | 1623 | 1649 | rVB | 221634 | 446983 | 50.15% | 5.618% |
| 39 | 6.688 | 1736 | 1741 | 1744 | rBV4 | 755 | 863 | 0.10% | 0.011% |
| 40 | 6.791 | 1769 | 1773 | 1776 | rVB4 | 801 | 625 | 0.07% | 0.008% |
| 41 | 6.842 | 1785 | 1789 | 1790 | rBV3 | 905 | 627 | 0.07% | 0.008% |
| 42 | 7.128 | 1874 | 1878 | 1880 | rBV4 | 660 | 508 | 0.06% | 0.006% |
| 43 | 7.206 | 1891 | 1902 | 1924 | rBV | 119248 | 221243 | 24.82% | 2.781% |
| 44 | 7.543 | 1995 | 2007 | 2024 | rBV | 408257 | 724198 | 81.25% | 9.103% |
| 45 | 7.829 | 2086 | 2096 | 2122 | rBV2 | 78286 | 149707 | 16.80% | 1.882% |
| 46 | 7.961 | 2134 | 2137 | 2141 | rVV4 | 911 | 670 | 0.08% | 0.008% |
| 47 | 7.996 | 2145 | 2148 | 2150 | rVB2 | 1013 | 654 | 0.07% | 0.008% |
| 48 | 8.164 | 2189 | 2200 | 2205 | rBV7 | 1481 | 2858 | 0.32% | 0.036% |
| 49 | 8.289 | 2227 | 2239 | 2276 | rBV | 299354 | 586758 | 65.83% | 7.375% |
| 50 | 8.569 | 2323 | 2326 | 2329 | rBV3 | 533 | 444 | 0.05% | 0.006% |
| 51 | 8.627 | 2342 | 2344 | 2349 | rVB4 | 776 | 511 | 0.06% | 0.006% |
| 52 | 8.672 | 2353 | 2358 | 2365 | rBV6 | 928 | 1027 | 0.12% | 0.013% |
| 53 | 8.804 | 2395 | 2399 | 2404 | rVB5 | 572 | 601 | 0.07% | 0.008% |
| 54 | 9.067 | 2468 | 2481 | 2511 | rVV | 467956 | 800035 | 89.76% | 10.056% |
| 55 | 9.238 | 2530 | 2534 | 2539 | rVV5 | 983 | 877 | 0.10% | 0.011% |
| 56 | 9.305 | 2551 | 2555 | 2560 | rBV5 | 698 | 879 | 0.10% | 0.011% |
| 57 | 9.350 | 2566 | 2569 | 2573 | rVV5 | 1097 | 1079 | 0.12% | 0.014% |
| 58 | 9.366 | 2573 | 2574 | 2578 | rVV3 | 696 | 497 | 0.06% | 0.006% |
| 59 | 9.392 | 2578 | 2582 | 2588 | rVV6 | 874 | 1013 | 0.11% | 0.013% |
| 60 | 9.434 | 2593 | 2595 | 2598 | rVV2 | 797 | 509 | 0.06% | 0.006% |
| 61 | 9.543 | 2626 | 2629 | 2631 | rVV3 | 777 | 507 | 0.06% | 0.006% |
| 62 | 9.739 | 2686 | 2690 | 2692 | rBV3 | 1022 | 730 | 0.08% | 0.009% |
| 63 | 10.051 | 2783 | 2787 | 2793 | rBV6 | 738 | 868 | 0.10% | 0.011% |
| 64 | 10.196 | 2828 | 2832 | 2835 | rVB3 | 990 | 815 | 0.09% | 0.010% |
| 65 | 10.225 | 2835 | 2841 | 2842 | rBV2 | 1182 | 820 | 0.09% | 0.010% |
| 66 | 10.408 | 2886 | 2898 | 2917 | rBV | 321730 | 523103 | 58.69% | 6.575% |
| 67 | 10.527 | 2931 | 2935 | 2939 | rVB3 | 666 | 647 | 0.07% | 0.008% |
| 68 | 10.549 | 2939 | 2942 | 2945 | rBV3 | 837 | 563 | 0.06% | 0.007% |
| 69 | 10.582 | 2945 | 2952 | 2953 | rBV5 | 965 | 953 | 0.11% | 0.012% |
| 70 | 10.752 | 3001 | 3005 | 3007 | rVV4 | 534 | 550 | 0.06% | 0.007% |
| 71 | 10.852 | 3033 | 3036 | 3041 | rBV4 | 993 | 922 | 0.10% | 0.012% |

Data Path : Z:\VOASRV\HPCHEM1\MSVOA U\DATA\VU091619\
 Data File : VU034593.D
 Acq On : 17 Sep 2019 03:07
 Operator : JC/SP
 Sample : K4838-17
 Misc : 5.0mL/MSVOA U/WATER
 ALS Vial : 41 Sample Multiplier: 1

Instrument :
 MSVOA_U
 ClientSampleId :
 COML9

Integration Parameters: LSCINT.P

Integrator: RTE
 Smoothing : OFF
 Sampling : 1
 Start Thrs: 0.2
 Stop Thrs : 0

Filtering: 5
 Min Area: 0 % of largest Peak
 Max Peaks: 100
 Peak Location: TOP

If leading or trailing edge < 100 prefer < Baseline drop else tangent >
 Peak separation: 5

Method : Z:\VOASRV\HPCHEM1\MSVOA_U\METHOD\SOMULM091619WMA.M
 Title : VOC Analysis

| | | | | | | | | | |
|-----|--------|------|------|------|------|--------|--------|--------|--------|
| 72 | 10.877 | 3041 | 3044 | 3048 | rVV4 | 590 | 516 | 0.06% | 0.006% |
| 73 | 10.951 | 3064 | 3067 | 3074 | rVB4 | 757 | 616 | 0.07% | 0.008% |
| 74 | 10.987 | 3074 | 3078 | 3080 | rBV4 | 670 | 617 | 0.07% | 0.008% |
| 75 | 11.025 | 3086 | 3090 | 3093 | rBV3 | 682 | 578 | 0.06% | 0.007% |
| 76 | 11.125 | 3116 | 3121 | 3124 | rBV2 | 820 | 959 | 0.11% | 0.012% |
| 77 | 11.176 | 3133 | 3137 | 3141 | rVB5 | 754 | 672 | 0.08% | 0.008% |
| 78 | 11.411 | 3203 | 3210 | 3214 | rBV6 | 903 | 1195 | 0.13% | 0.015% |
| 79 | 11.459 | 3214 | 3225 | 3252 | rBV | 417333 | 695296 | 78.01% | 8.740% |
| 80 | 11.781 | 3321 | 3325 | 3330 | rBV4 | 552 | 640 | 0.07% | 0.008% |
| 81 | 11.836 | 3330 | 3342 | 3365 | rBV | 394201 | 672524 | 75.45% | 8.453% |
| 82 | 12.077 | 3414 | 3417 | 3419 | rBV3 | 1246 | 852 | 0.10% | 0.011% |
| 83 | 12.151 | 3437 | 3440 | 3443 | rVB2 | 947 | 577 | 0.06% | 0.007% |
| 84 | 12.199 | 3453 | 3455 | 3462 | rVB4 | 1358 | 1170 | 0.13% | 0.015% |
| 85 | 12.228 | 3462 | 3464 | 3466 | rBV2 | 741 | 454 | 0.05% | 0.006% |
| 86 | 12.331 | 3494 | 3496 | 3501 | rVB3 | 681 | 498 | 0.06% | 0.006% |
| 87 | 12.697 | 3607 | 3610 | 3615 | rVB3 | 745 | 543 | 0.06% | 0.007% |
| 88 | 12.829 | 3649 | 3651 | 3655 | rVB4 | 866 | 472 | 0.05% | 0.006% |
| 89 | 12.996 | 3699 | 3703 | 3706 | rVB4 | 780 | 620 | 0.07% | 0.008% |
| 90 | 13.025 | 3706 | 3712 | 3714 | rBV4 | 566 | 601 | 0.07% | 0.008% |
| 91 | 13.086 | 3728 | 3731 | 3737 | rVB5 | 674 | 644 | 0.07% | 0.008% |
| 92 | 13.327 | 3798 | 3806 | 3809 | rBV5 | 766 | 1029 | 0.12% | 0.013% |
| 93 | 13.379 | 3816 | 3822 | 3825 | rVB4 | 659 | 633 | 0.07% | 0.008% |
| 94 | 13.517 | 3863 | 3865 | 3867 | rBV2 | 745 | 458 | 0.05% | 0.006% |
| 95 | 13.604 | 3889 | 3892 | 3897 | rVV4 | 750 | 839 | 0.09% | 0.011% |
| 96 | 13.739 | 3931 | 3934 | 3938 | rVB3 | 970 | 732 | 0.08% | 0.009% |
| 97 | 13.765 | 3939 | 3942 | 3947 | rBV4 | 683 | 690 | 0.08% | 0.009% |
| 98 | 14.189 | 4071 | 4074 | 4076 | rBV3 | 796 | 479 | 0.05% | 0.006% |
| 99 | 14.848 | 4277 | 4279 | 4281 | rBV | 991 | 465 | 0.05% | 0.006% |
| 100 | 15.511 | 4482 | 4485 | 4489 | rBV5 | 948 | 937 | 0.11% | 0.012% |

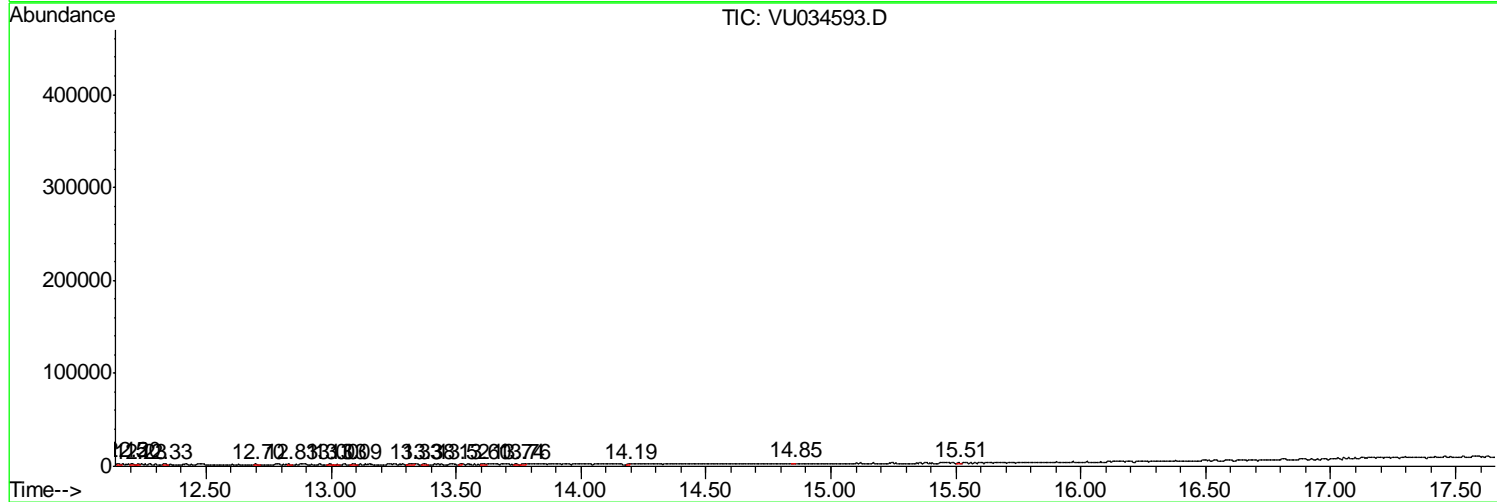
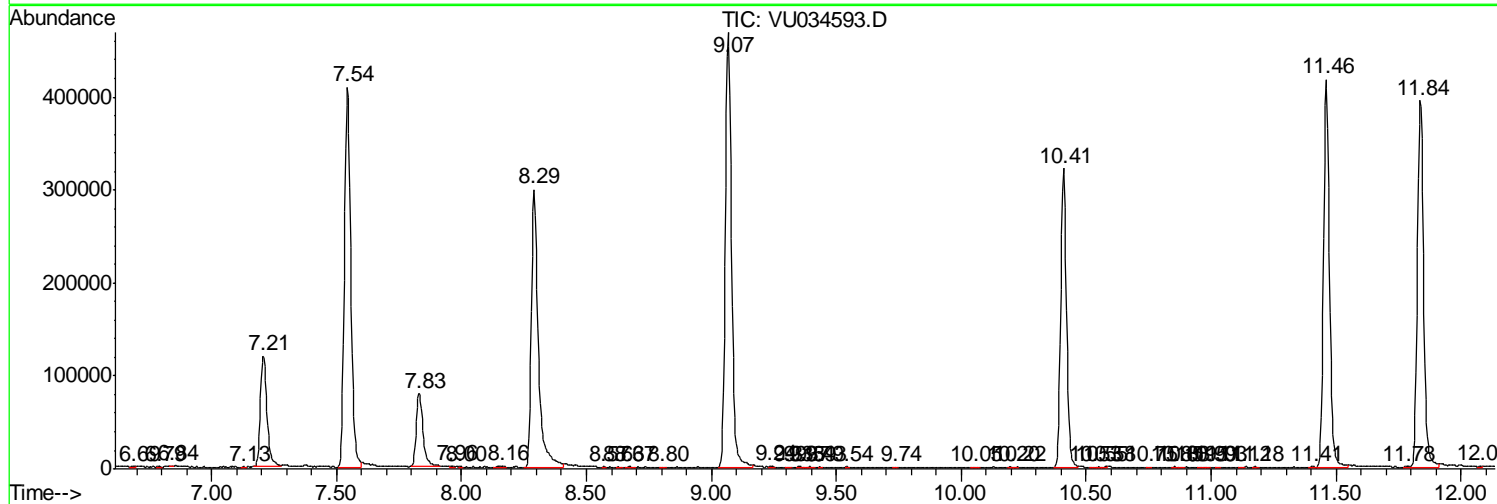
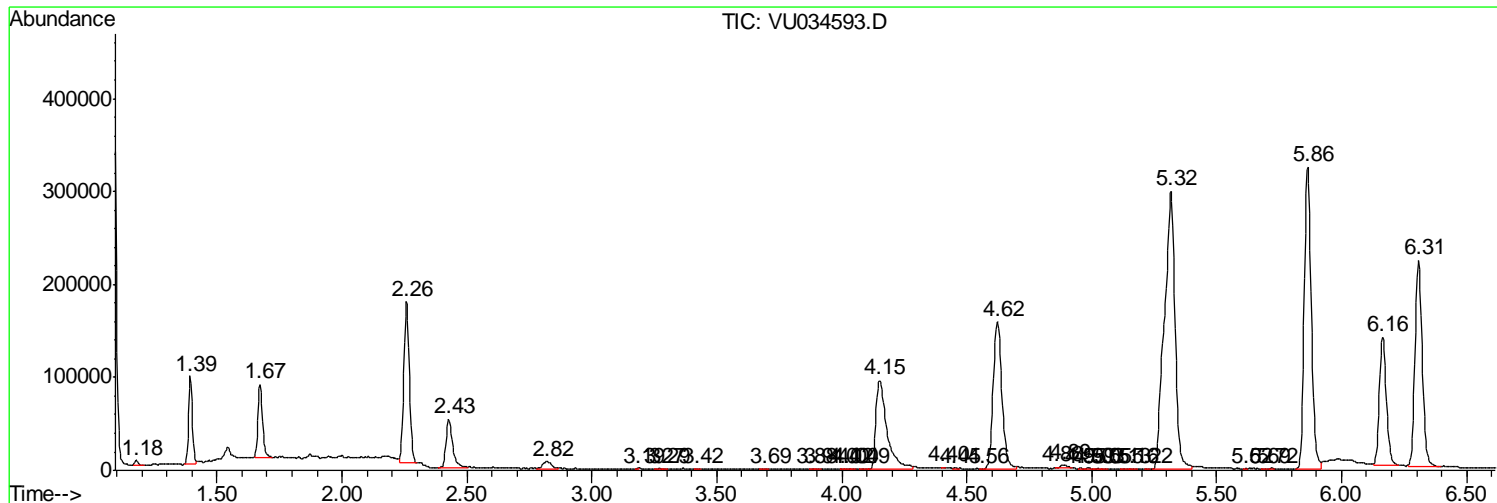
Sum of corrected areas: 7955606

Data Path : Z:\VOASRV\HPCHEM1\MSVOA U\DATA\VU091619\
 Data File : VU034593.D
 Acq On : 17 Sep 2019 03:07
 Operator : JC/SP
 Sample : K4838-17
 Misc : 5.0mL/MSVOA U/WATER
 ALS Vial : 41 Sample Multiplier: 1

Instrument :
 MSVOA_U
Client Sampled :
 COML9

Quant Method : Z:\VOASRV\HPCHEM1\MSVOA_U\METHOD\SOMULM091619WMA.M
 Quant Title : VOC Analysis

TIC Library : C:\DATABASE\NIST11.L
 TIC Integration Parameters: LSCINT.P



Data Path : Z:\VOASRV\HPCHEM1\MSVOA U\DATA\VU091619\
 Data File : VU034593.D
 Acq On : 17 Sep 2019 03:07
 Operator : JC/SP
 Sample : K4838-17
 Misc : 5.0mL/MSVOA U/WATER
 ALS Vial : 41 Sample Multiplier: 1

Instrument :
 MSVOA_U
 ClientSampled :
 COML9

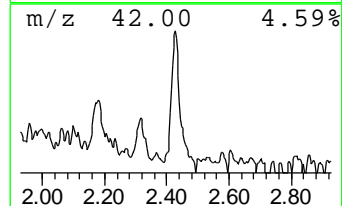
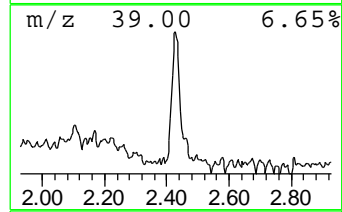
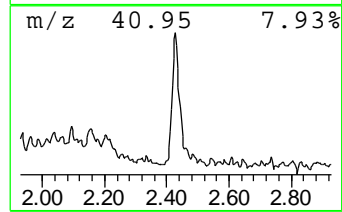
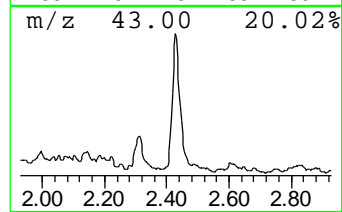
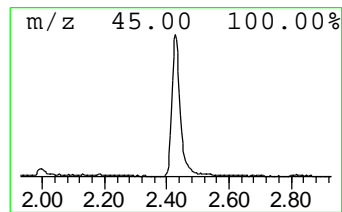
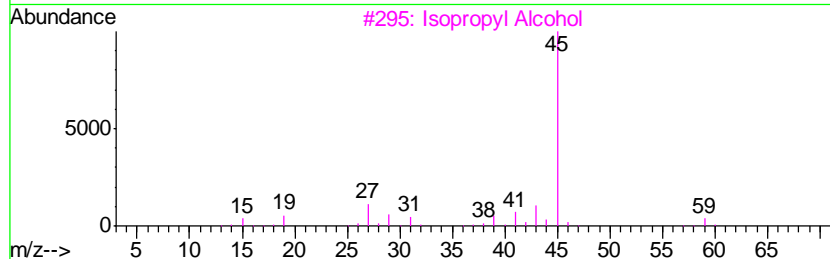
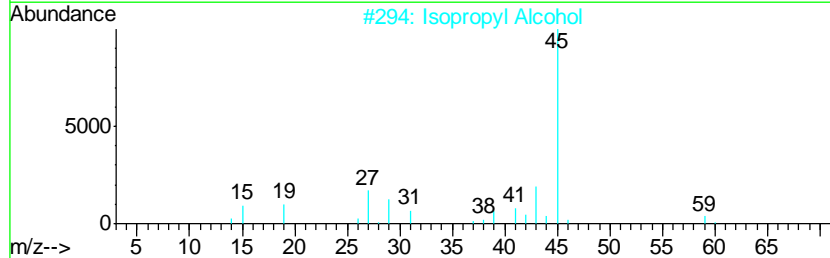
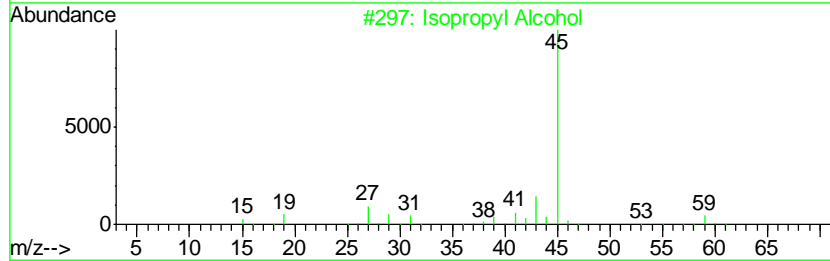
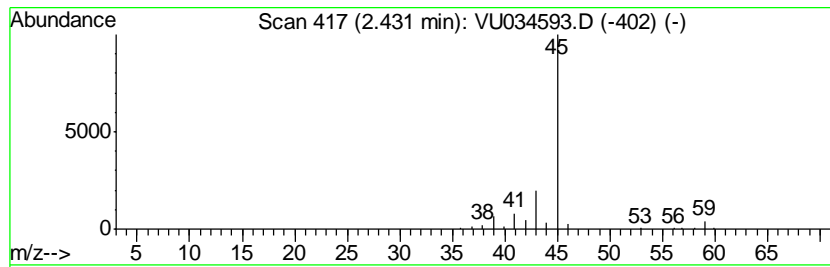
Quant Method : Z:\VOASRV\HPCHEM1\MSVOA_U\METHOD\SOMULM091619WMA.M
 Quant Title : VOC Analysis

TIC Library : C:\DATABASE\NIST11.L
 TIC Integration Parameters: LSCINT.P

 Peak Number 1 Isopropyl Alcohol Concentration Rank 2

| R.T. | EstConc | Area | Relative to ISTD | R.T. |
|------|-----------|-------|---------------------|------|
| 2.43 | 7.74 ug/L | 99762 | 1,4-Difluorobenzene | 5.86 |

| Hit# | of | Tentative ID | MW | MolForm | CAS# | Qual |
|------|----|--------------------------|----|---------|-------------|------|
| 1 | 5 | Isopropyl Alcohol | 60 | C3H8O | 000067-63-0 | 86 |
| 2 | | Isopropyl Alcohol | 60 | C3H8O | 000067-63-0 | 78 |
| 3 | | Isopropyl Alcohol | 60 | C3H8O | 000067-63-0 | 78 |
| 4 | | Isopropyl Alcohol | 60 | C3H8O | 000067-63-0 | 56 |
| 5 | | Hydrazine, 1,2-dimethyl- | 60 | C2H8N2 | 000540-73-8 | 9 |



Data Path : Z:\VOASRV\HPCHEM1\MSVOA_U\DATA\VU091619\
Data File : VU034593.D
Acq On : 17 Sep 2019 03:07
Operator : JC/SP
Sample : K4838-17
Misc : 5.0mL/MSVOA_U/WATER
ALS Vial : 41 Sample Multiplier: 1

Instrument :
MSVOA_U
ClientSampleId :
COML9

Quant Method : Z:\VOASRV\HPCHEM1\MSVOA_U\METHOD\SOMULM091619WMA.M
Quant Title : VOC Analysis

TIC Library : C:\DATABASE\NIST11.L
TIC Integration Parameters: LSCINT.P

| TIC Top Hit name | RT | EstConc | Units | Response | --Internal Standard-- | | | |
|-------------------|------|---------|-------|----------|-----------------------|------|--------|------|
| | | | | | # | RT | Resp | Conc |
| Isopropyl Alcohol | 2.43 | 7.7 | ug/L | 99762 | 1 | 5.86 | 644458 | 50.0 |