

Data Path : Z:\VOASRV\HPCHEM1\MSVOA U\DATA\VU091620\  
 Data File : VU040154.D  
 Acq On : 16 Sep 2020 17:36  
 Operator : SY/MD  
 Sample : L4041-10  
 Misc : 25.0mL/MSVOA U/WATER  
 ALS Vial : 15 Sample Multiplier: 1

Instrument :  
 MSVOA\_U  
 ClientSampleId :  
 C0AB6

Quant Time: Sep 17 01:12:18 2020  
 Quant Method : Z:\VOASRV\HPCHEM1\MSVOA\_U\METHOD\SOMUTR083120WMA.M  
 Quant Title : TRACE VOA SOM01.0  
 QLast Update : Thu Sep 17 01:09:36 2020  
 Response via : Initial Calibration

Internal Standards	R.T.	QIon	Response	Conc	Units	Dev(Min)
1) 1,4-Difluorobenzene	6.26	114	110633	5.00	ug/L	0.00
28) Chlorobenzene-d5	9.42	117	106977	5.00	ug/L	0.00
60) 1,4-Dichlorobenzene-d4	11.81	152	45944	5.00	ug/L	0.00

## System Monitoring Compounds

4) Vinyl Chloride-d3	1.60	65	27092	4.49	ug/L	0.00
Spiked Amount	5.000	Range	40 - 130	Recovery	=	89.80%
7) Chloroethane-d5	1.92	69	23794	4.73	ug/L	0.00
Spiked Amount	5.000	Range	65 - 130	Recovery	=	94.60%
11) 1,1-Dichloroethene-d2	2.58	63	45220	2.92	ug/L	0.00
Spiked Amount	5.000	Range	60 - 125	Recovery	=	58.40%#
20) 2-Butanone-d5	4.66	46	103562	42.86	ug/L	0.00
Spiked Amount	50.000	Range	40 - 130	Recovery	=	85.72%
24) Chloroform-d	5.08	84	59521	4.22	ug/L	0.00
Spiked Amount	5.000	Range	70 - 125	Recovery	=	84.40%
26) 1,2-Dichloroethane-d4	5.72	65	37273	4.28	ug/L	0.00
Spiked Amount	5.000	Range	70 - 130	Recovery	=	85.60%
32) Benzene-d6	5.74	84	108840	4.36	ug/L	0.00
Spiked Amount	5.000	Range	70 - 125	Recovery	=	87.20%
36) 1,2-Dichloropropane-d6	6.70	67	36347	4.41	ug/L	0.00
Spiked Amount	5.000	Range	60 - 140	Recovery	=	88.20%
41) Toluene-d8	7.91	98	85358	3.78	ug/L	0.00
Spiked Amount	5.000	Range	70 - 130	Recovery	=	75.60%
43) trans-1,3-Dichloropropene-	8.19	79	14228	3.76	ug/L	0.00
Spiked Amount	5.000	Range	55 - 130	Recovery	=	75.20%
46) 2-Hexanone-d5	8.64	63	72881	40.69	ug/L	0.00
Spiked Amount	50.000	Range	45 - 130	Recovery	=	81.38%
57) 1,1,2,2-Tetrachloroethane-	10.75	84	31204	4.38	ug/L	0.00
Spiked Amount	5.000	Range	65 - 120	Recovery	=	87.60%
64) 1,2-Dichlorobenzene-d4	12.19	152	34015	4.57	ug/L	0.00
Spiked Amount	5.000	Range	80 - 120	Recovery	=	91.40%

## Target Compounds

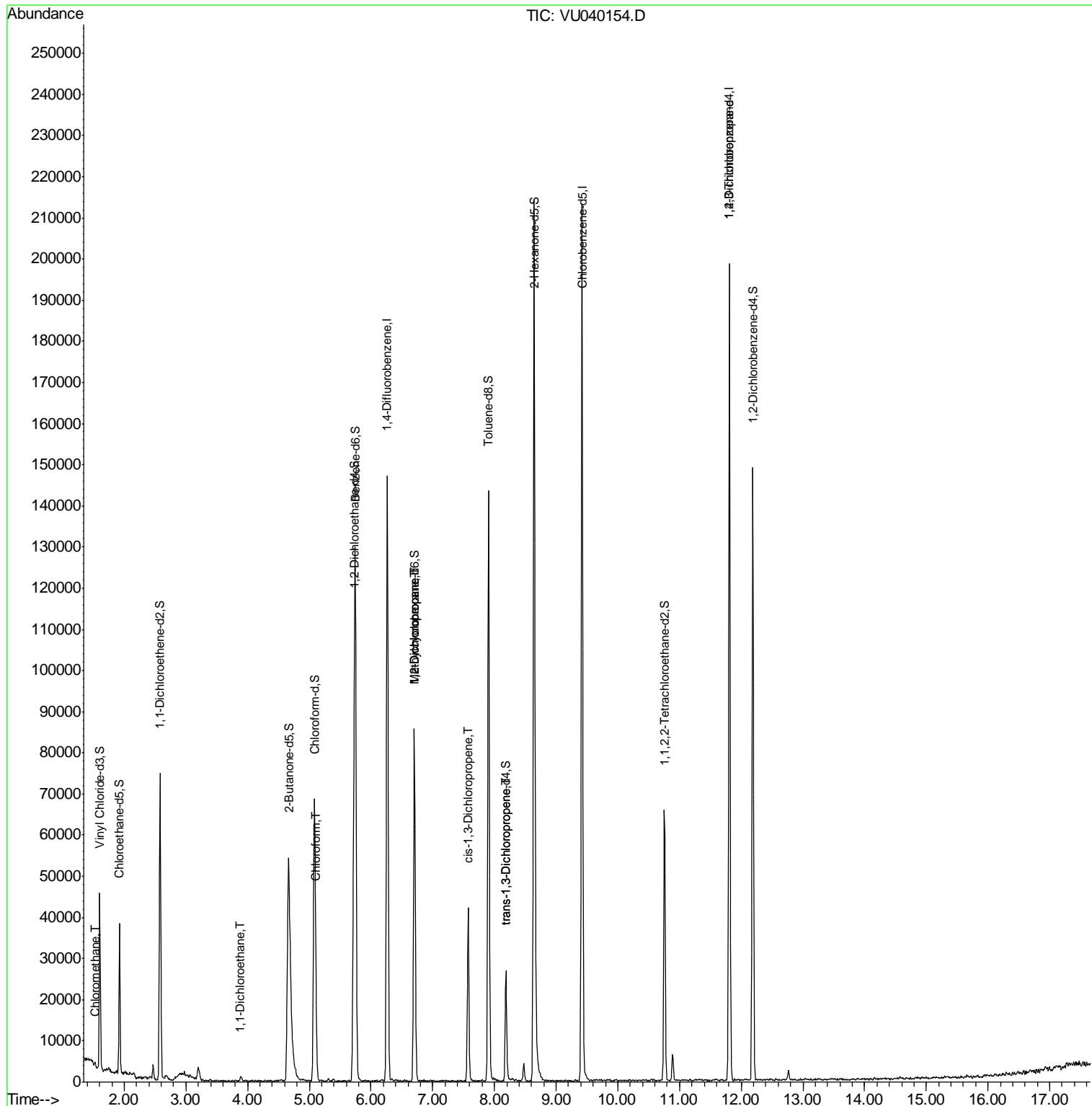
Target Compounds	R.T.	QIon	Response	Conc	Units	Ovalue
3) Chloromethane	1.53	50	883	0.084	ug/L	93
19) 1,1-Dichloroethane	3.89	63	1400	0.074	ug/L #	89
25) Chloroform	5.11	83	6021	0.310	ug/L	91
35) Methylcyclohexane	6.70	83	8803	0.560	ug/L #	14
37) 1,2-Dichloropropane	6.70	63	4550	0.439	ug/L #	88
39) cis-1,3-Dichloropropene	7.57	75	1240	0.081	ug/L #	83
44) trans-1,3-Dichloropropene	8.19	75	904	0.064	ug/L	87
59) 1,2,3-Trichloropropane	11.81	75	6651	0.866	ug/L #	80

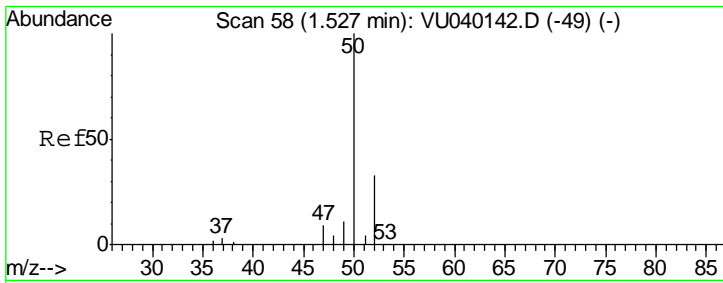
(#) = qualifier out of range (m) = manual integration (+) = signals summed

Data Path : Z:\VOASRV\HPCHEM1\MSVOA U\DATA\VU091620\  
 Data File : VU040154.D  
 Acq On : 16 Sep 2020 17:36  
 Operator : SY/MD  
 Sample : L4041-10  
 Misc : 25.0mL/MSVOA U/WATER  
 ALS Vial : 15 Sample Multiplier: 1

Instrument :  
 MSVOA\_U  
 Client Sampled :  
 C0AB6

Quant Time: Sep 17 01:12:18 2020  
 Quant Method : Z:\VOASRV\HPCHEM1\MSVOA\_U\METHOD\SOMUTR083120WMA.M  
 Quant Title : TRACE VOA SOM01.0  
 QLast Update : Thu Sep 17 01:09:36 2020  
 Response via : Initial Calibration

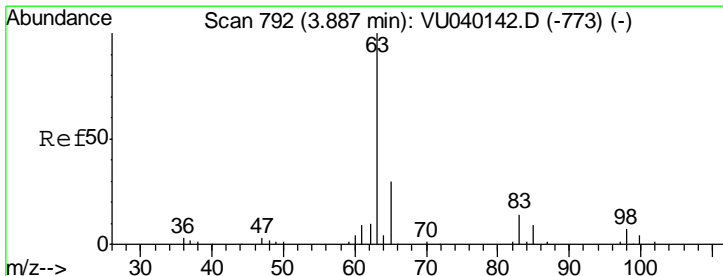
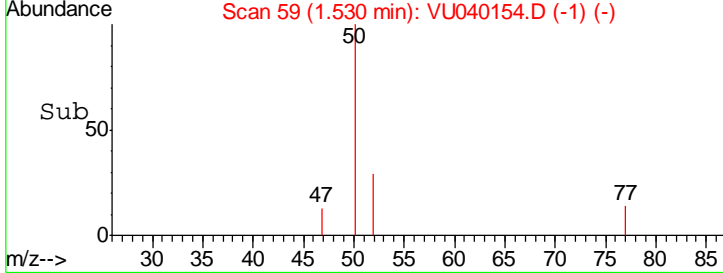
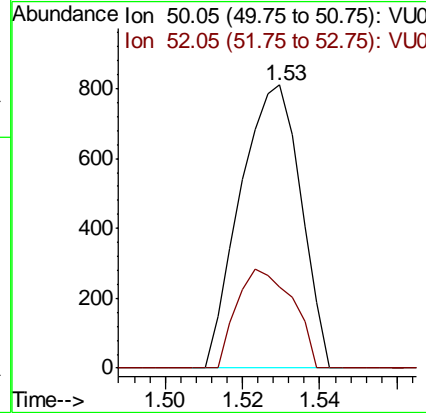
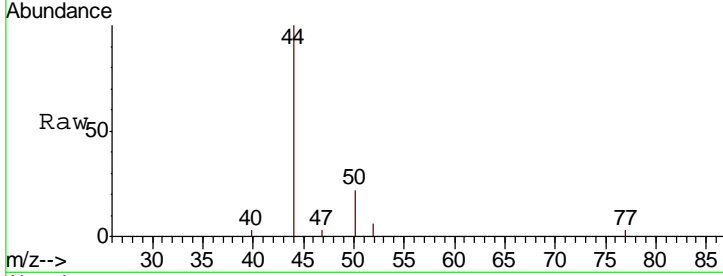




#3  
 Chloromethane  
 Concen: 0.084 ug/L  
 RT: 1.53 min Scan# 59  
 Delta R.T. 0.00 min  
 Lab File: VU040154.D  
 Acq: 16 Sep 2020 17:36

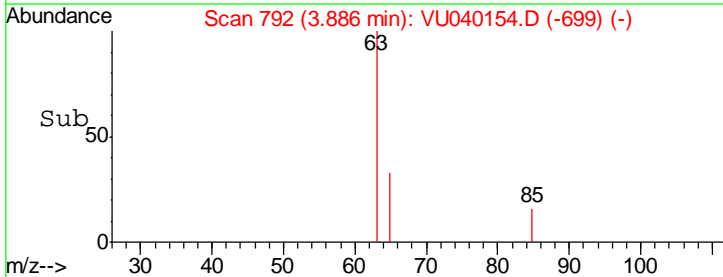
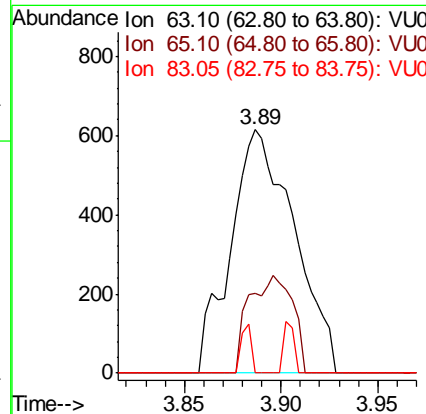
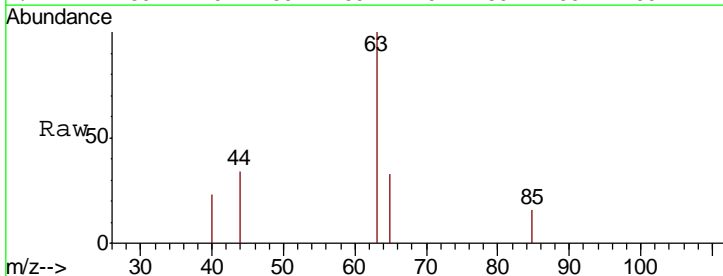
Instrument : MSVOA\_U  
 ClientSampled : C0AB6

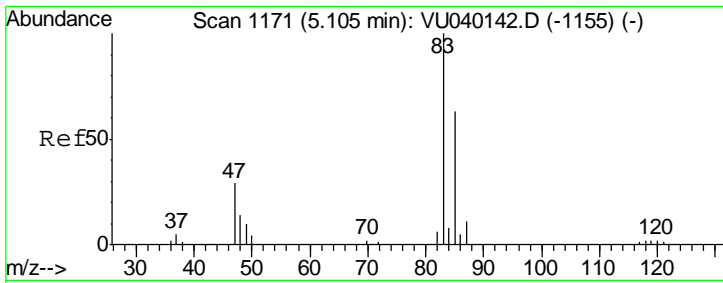
Tgt Ion	Resp	Lower	Upper
50	100		
52	28.9	22.8	42.4



#19  
 1,1-Dichloroethane  
 Concen: 0.074 ug/L  
 RT: 3.89 min Scan# 792  
 Delta R.T. -0.00 min  
 Lab File: VU040154.D  
 Acq: 16 Sep 2020 17:36

Tgt Ion	Resp	Lower	Upper
63	100		
65	32.8	22.2	41.2
83	0.0	9.4	17.6#

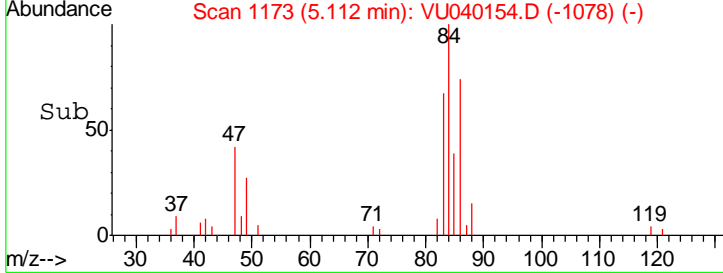
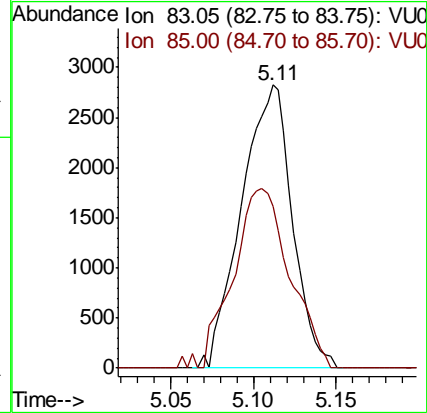
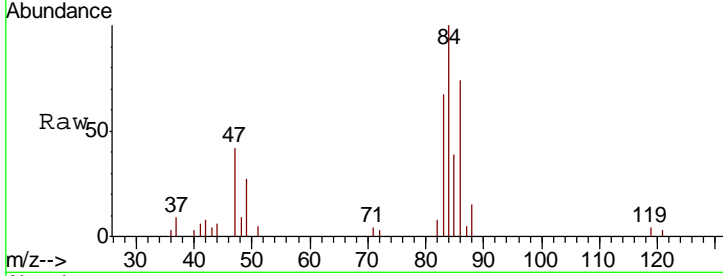




#25  
 Chloroform  
 Concen: 0.310 ug/L  
 RT: 5.11 min Scan# 1173  
 Delta R.T. 0.01 min  
 Lab File: VU040154.D  
 Acq: 16 Sep 2020 17:36

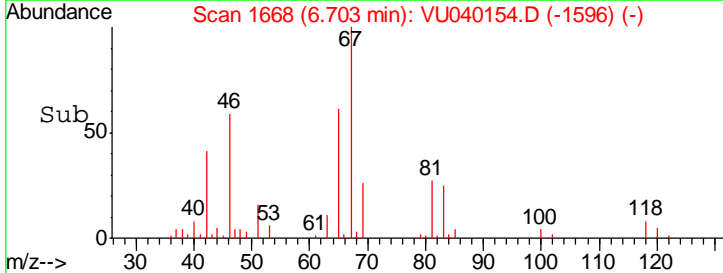
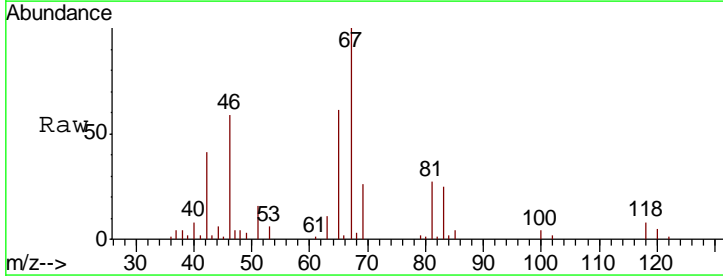
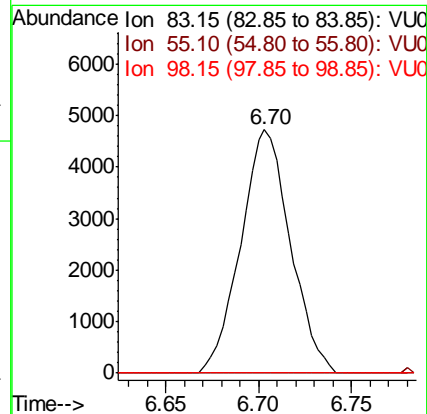
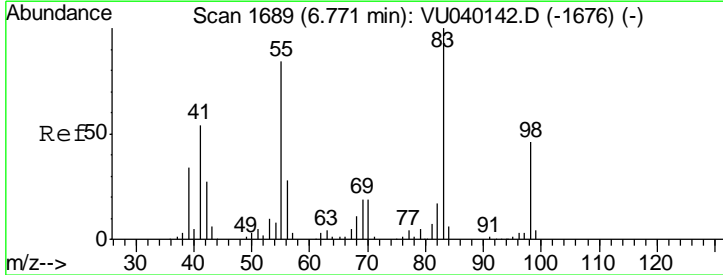
**Instrument :**  
 MSVOA\_U  
**ClientSampled :**  
 C0AB6

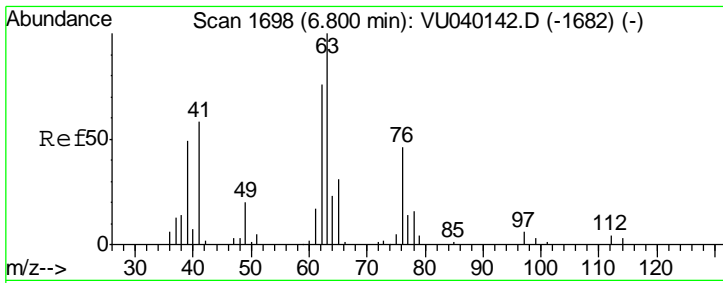
Tgt Ion	Resp	Lower	Upper
83	6021		
83	100		
85	57.3	45.3	84.1



#35  
 Methylcyclohexane  
 Concen: 0.560 ug/L  
 RT: 6.70 min Scan# 1668  
 Delta R.T. -0.07 min  
 Lab File: VU040154.D  
 Acq: 16 Sep 2020 17:36

Tgt Ion	Resp	Lower	Upper
83	8803		
83	100		
55	0.2	70.5	105.7#
98	0.2	37.8	56.6#

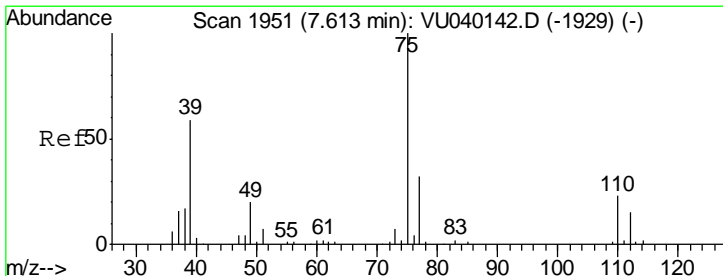
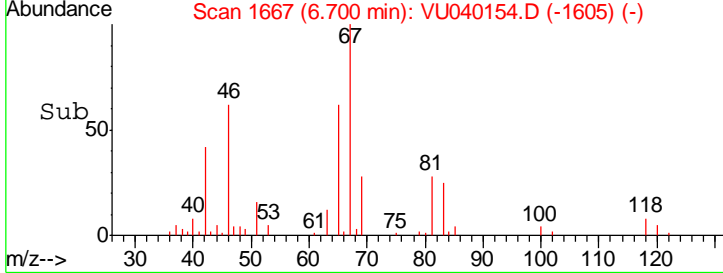
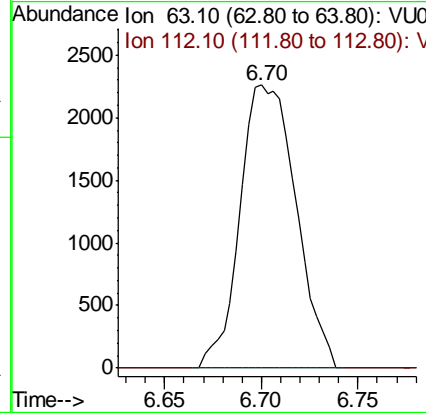
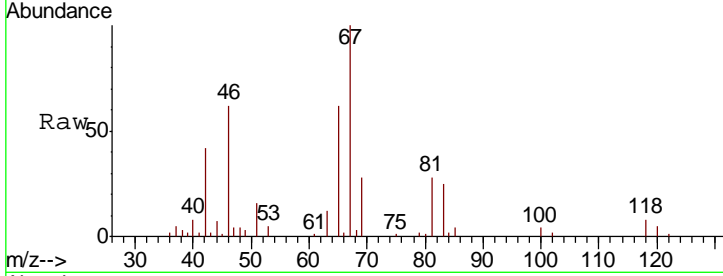




#37  
 1,2-Dichloropropane  
 Concen: 0.439 ug/L  
 RT: 6.70 min Scan# 1667  
 Delta R.T. -0.10 min  
 Lab File: VU040154.D  
 Acq: 16 Sep 2020 17:36

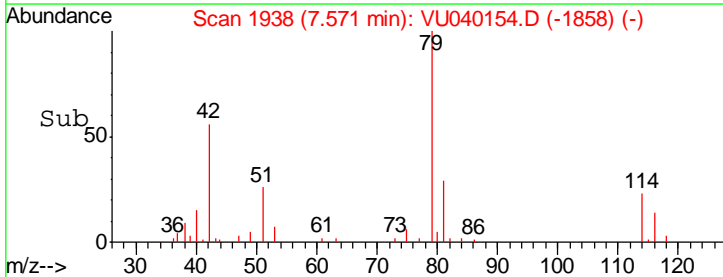
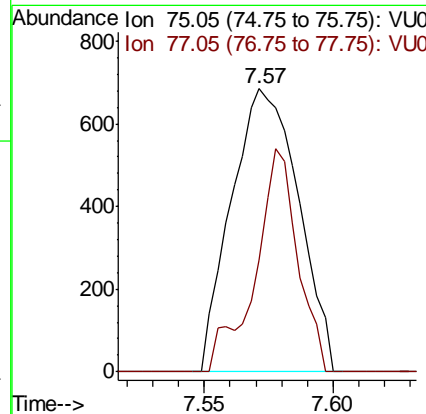
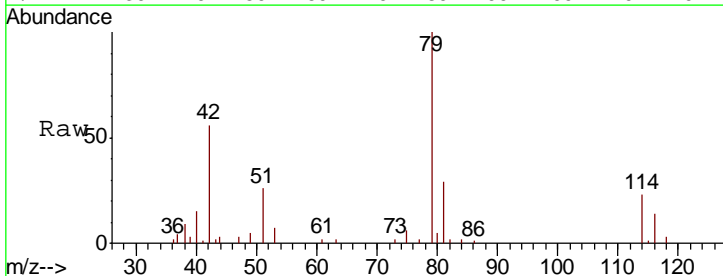
Instrument : MSVOA\_U  
 ClientSampled : C0AB6

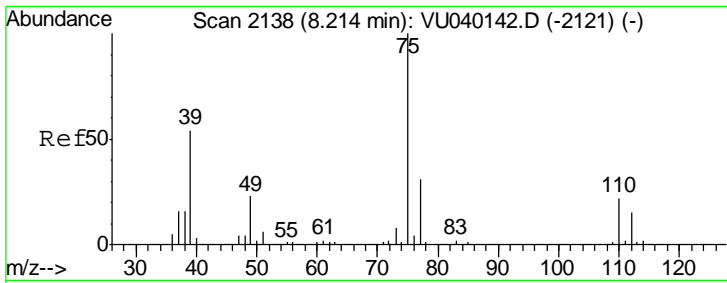
Tgt Ion	Resp	Lower	Upper
63	100		
112	0.0	3.2	4.8#



#39  
 cis-1,3-Dichloropropene  
 Concen: 0.081 ug/L  
 RT: 7.57 min Scan# 1938  
 Delta R.T. -0.04 min  
 Lab File: VU040154.D  
 Acq: 16 Sep 2020 17:36

Tgt Ion	Resp	Lower	Upper
75	100		
77	39.4	21.1	39.3#

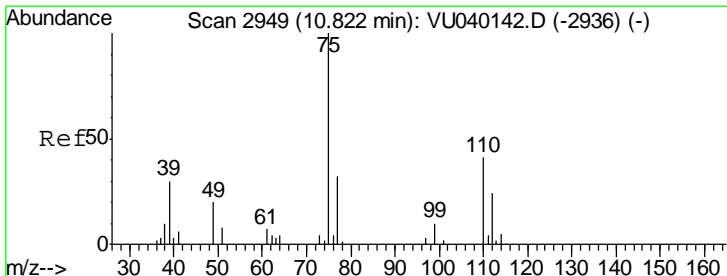
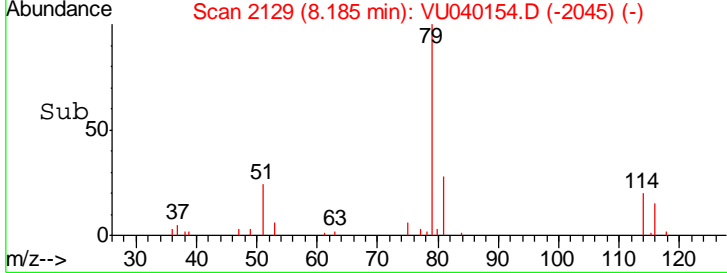
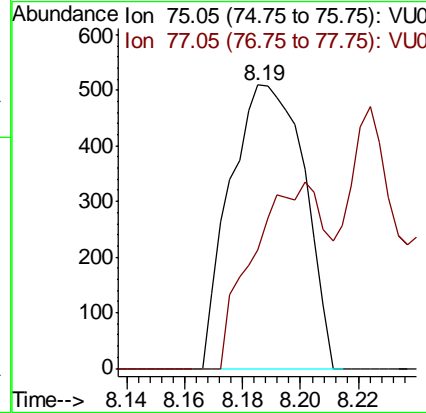
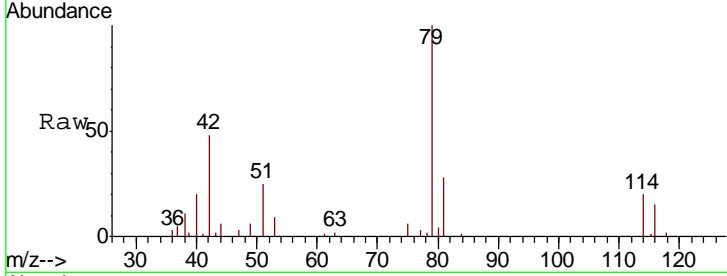




#44  
 trans-1,3-Dichloropropene  
 Concen: 0.064 ug/L  
 RT: 8.19 min Scan# 2129  
 Delta R.T. -0.03 min  
 Lab File: VU040154.D  
 Acq: 16 Sep 2020 17:36

Instrument : MSVOA\_U  
 ClientSampleID : C0AB6

Tgt Ion: 75 Resp: 904  
 Ion Ratio Lower Upper  
 75 100  
 77 41.7 23.9 44.3



#59  
 1,2,3-Trichloropropane  
 Concen: 0.866 ug/L  
 RT: 11.81 min Scan# 3256  
 Delta R.T. 0.99 min  
 Lab File: VU040154.D  
 Acq: 16 Sep 2020 17:36

Tgt Ion: 75 Resp: 6651  
 Ion Ratio Lower Upper  
 75 100  
 77 42.3 24.9 37.3#

