

Data Path : Z:\voasrv\HPCHEM1\MSVOA_U\Data\VU091621\
 Data File : VU044665.D
 Acq On : 16 Sep 2021 16:13
 Operator : SY/MD
 Sample : M3763-07
 Misc : 25.0mL/MSVOA_U/WATER
 ALS Vial : 13 Sample Multiplier: 1

Instrument :
 MSVOA_U
 ClientSampled :
 C0CA4

Integration Parameters: rteint.p
 Integrator: RTE
 Smoothing : ON Filtering: 5
 Sampling : 1 Min Area: 3 % of largest Peak
 Start Thrs: 0.1 Max Peaks: 100
 Stop Thrs : 0 Peak Location: TOP

If leading or trailing edge < 100 prefer < Baseline drop else tangent >
 Peak separation: 5

Method : Z:\voasrv\HPCHEM1\MSVOA_U\Method\SFAMUTR090921WMA.M
 Title : TRACE VOA SFAM1.0

Signal : TIC: VU044665.D\data.ms

peak #	R.T. min	first scan	max scan	last scan	PK TY	peak height	corr. area	corr. % max.	% of total
1	1.601	73	81	93	rBV	38464	43257	7.07%	1.144%
2	1.916	171	179	192	rVB	43189	56388	9.22%	1.491%
3	2.572	370	383	400	rBV	71872	118060	19.30%	3.122%
4	4.642	1012	1027	1087	rBV	70322	252512	41.29%	6.677%
5	5.073	1145	1161	1187	rBV	82460	193034	31.56%	5.104%
6	5.732	1345	1366	1393	rBV2	154265	408572	66.81%	10.804%
7	6.256	1512	1529	1550	rBV	167943	316778	51.80%	8.377%
8	6.697	1649	1666	1686	rBV	106812	208599	34.11%	5.516%
9	7.571	1926	1938	1957	rBV	41880	74294	12.15%	1.965%
10	7.903	2027	2041	2056	rBV	166954	287275	46.97%	7.596%
11	8.186	2116	2129	2143	rBV	25585	43698	7.15%	1.155%
12	8.645	2257	2272	2317	rBV	290787	611572	100.00%	16.172%
13	9.423	2498	2514	2542	rBV	243650	410692	67.15%	10.860%
14	10.761	2918	2930	2945	rBV	84828	137825	22.54%	3.644%
15	11.816	3247	3258	3273	rBV	219229	351030	57.40%	9.282%
16	12.198	3365	3377	3394	rBV	165401	268160	43.85%	7.091%

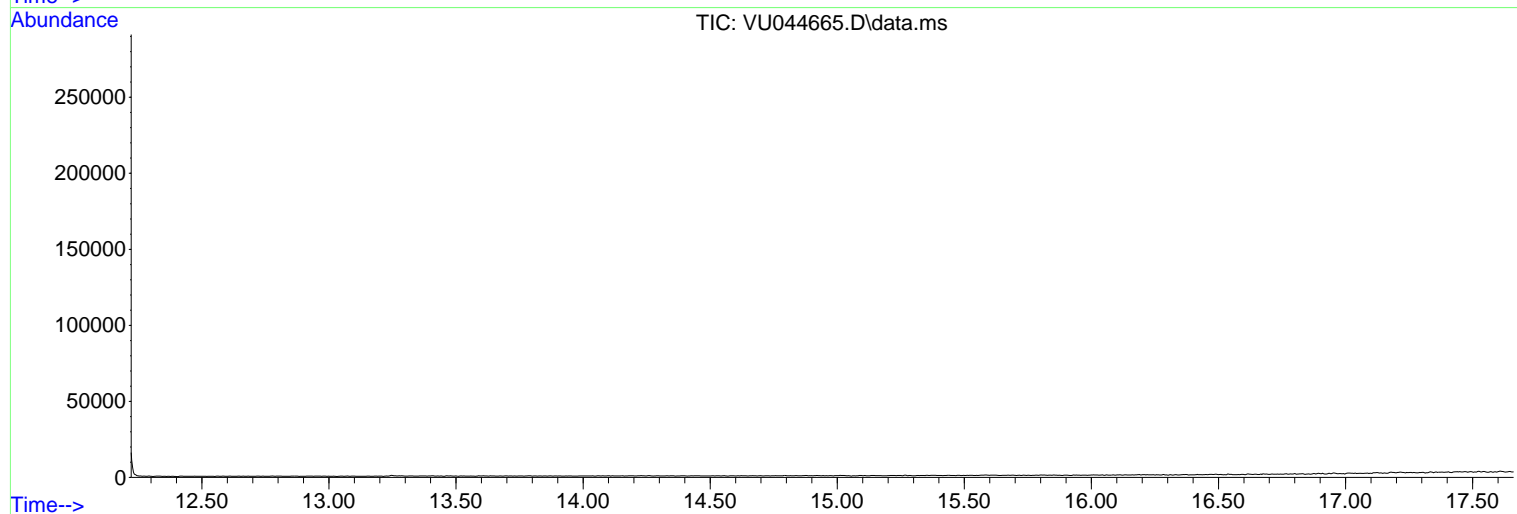
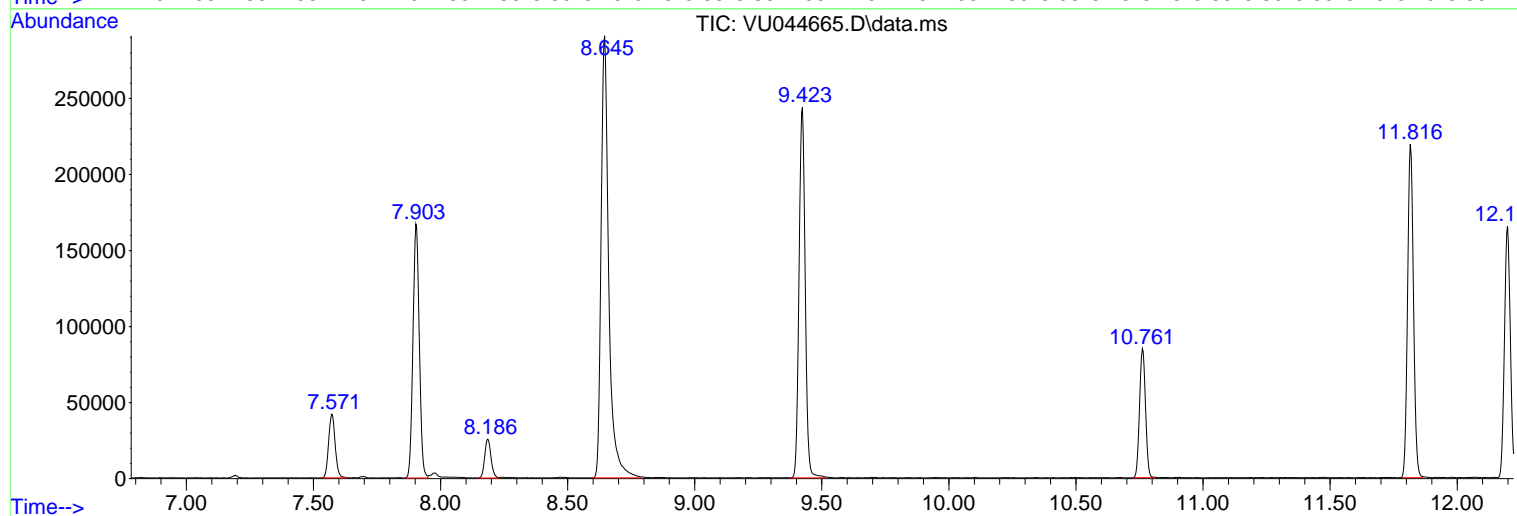
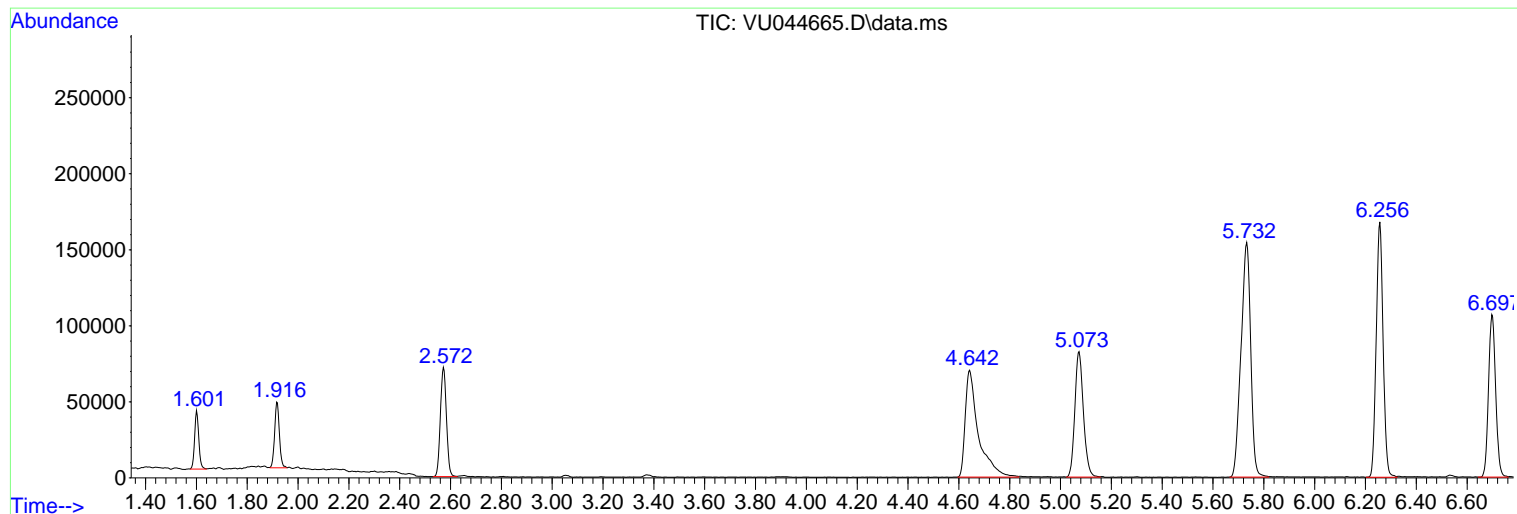
Sum of corrected areas: 3781746

Data Path : Z:\voasrv\HPCHEM1\MSVOA_U\Data\VU091621\
Data File : VU044665.D
Acq On : 16 Sep 2021 16:13
Operator : SY/MD
Sample : M3763-07
Misc : 25.0mL/MSVOA_U/WATER
ALS Vial : 13 Sample Multiplier: 1

Instrument :
MSVOA_U
ClientSampled :
C0CA4

Quant Method : Z:\voasrv\HPCHEM1\MSVOA_U\Method\SFAMUTR090921WMA.M
Quant Title : TRACE VOA SFAM1.0

TIC Library : C:\Database\NIST20.L
TIC Integration Parameters: LSCINT.P



Library Search Compound Report

Data Path : Z:\voasrv\HPCHEM1\MSVOA_U\Data\VU091621\
Data File : VU044665.D
Acq On : 16 Sep 2021 16:13
Operator : SY/MD
Sample : M3763-07
Misc : 25.0mL/MSVOA_U/WATER
ALS Vial : 13 Sample Multiplier: 1

Instrument :
MSVOA_U
ClientSampleId :
C0CA4

Quant Method : Z:\voasrv\HPCHEM1\MSVOA_U\Method\SFAMUTR090921WMA.M
Quant Title : TRACE VOA SFAM1.0

TIC Library : C:\Database\NIST20.L
TIC Integration Parameters: LSCINT.P

No Library Search Compounds Detected

Data Path : Z:\voasrv\HPCHEM1\MSVOA_U\Data\VU091621\
Data File : VU044665.D
Acq On : 16 Sep 2021 16:13
Operator : SY/MD
Sample : M3763-07
Misc : 25.0mL/MSVOA_U/WATER
ALS Vial : 13 Sample Multiplier: 1

Instrument :
MSVOA_U
ClientSampled :
C0CA4

Quant Method : Z:\voasrv\HPCHEM1\MSVOA_U\Method\SFAMUTR090921WMA.M
Quant Title : TRACE VOA SFAM1.0

TIC Library : C:\Database\NIST20.L
TIC Integration Parameters: LSCINT.P

TIC Top Hit name	RT	EstConc	Units	Response	--Internal Standard--		
					#	RT	Resp Conc
