

Data File : VU026830.D
 Acq On : 17 Sep 2018 18:59
 Operator : MD/SY
 Sample : J4864-01 1000X
 Misc : 5.0mL/MSVOA_U/WATER
 ALS Vial : 13 Sample Multiplier: 1

Instrument :
 MSVOA_U
 ClientSampleId :
 C0D07

Quant Time: Sep 18 01:38:33 2018
 Quant Method : Z:\VOASRV\HPCHEM1\MSVOA_U\METHOD\SOMULM091718WMA.M
 Quant Title : VOC Analysis
 QLast Update : Tue Sep 18 01:34:58 2018
 Response via : Initial Calibration

Internal Standards	R.T.	QIon	Response	Conc	Units	Dev(Min)
1) 1,4-Difluorobenzene	5.89	114	249182	50.00	ug/L	0.00
28) Chlorobenzene-d5	9.09	117	237632	50.00	ug/L	0.00
60) 1,4-Dichlorobenzene-d4	11.48	152	97255	50.00	ug/L	0.00

System Monitoring Compounds

4) Vinyl Chloride-d3	1.40	65	84538	45.86	ug/L	0.00
Spiked Amount	50.000	Range	60 - 135	Recovery	=	91.72%
7) Chloroethane-d5	1.68	69	75459	47.83	ug/L	0.00
Spiked Amount	50.000	Range	70 - 130	Recovery	=	95.66%
11) 1,1-Dichloroethene-d2	2.27	63	127363	36.52	ug/L	0.00
Spiked Amount	50.000	Range	60 - 125	Recovery	=	73.04%
21) 2-Butanone-d5	4.18	46	131326	107.36	ug/L	0.00
Spiked Amount	100.000	Range	40 - 130	Recovery	=	107.36%
24) Chloroform-d	4.65	84	162229	47.45	ug/L	0.00
Spiked Amount	50.000	Range	70 - 125	Recovery	=	94.90%
26) 1,2-Dichloroethane-d4	5.31	65	106948	49.67	ug/L	0.00
Spiked Amount	50.000	Range	70 - 125	Recovery	=	99.34%
32) Benzene-d6	5.34	84	335313	50.35	ug/L	0.00
Spiked Amount	50.000	Range	70 - 125	Recovery	=	100.70%
36) 1,2-Dichloropropane-d6	6.33	67	109396	50.98	ug/L	0.00
Spiked Amount	50.000	Range	70 - 120	Recovery	=	101.96%
41) Toluene-d8	7.57	98	283739	47.16	ug/L	0.00
Spiked Amount	50.000	Range	80 - 120	Recovery	=	94.32%
43) trans-1,3-Dichloropropene-	7.85	79	45228	47.21	ug/L	0.00
Spiked Amount	50.000	Range	60 - 125	Recovery	=	94.42%
47) 2-Hexanone-d5	8.31	63	91262	108.22	ug/L	0.00
Spiked Amount	100.000	Range	45 - 130	Recovery	=	108.22%
57) 1,1,2,2-Tetrachloroethane-	10.43	84	144843	48.41	ug/L	0.00
Spiked Amount	50.000	Range	65 - 120	Recovery	=	96.82%
64) 1,2-Dichlorobenzene-d4	11.86	152	107533	53.15	ug/L	0.00
Spiked Amount	50.000	Range	80 - 120	Recovery	=	106.30%

Target Compounds

						Qvalue
5) Vinyl chloride	1.40	62	11523	4.929	ug/L	85
8) Chloroethane	1.70	64	757	0.517	ug/L	96
10) 1,1,2-Trichloro-1,2,2-trif	2.27	101	1173	0.682	ug/L #	18
12) 1,1-Dichloroethene	2.28	96	7094	4.390	ug/L #	1
13) Acetone	2.32	43	1244	1.035	ug/L	94
16) Methylene chloride	2.70	84	46976	22.869	ug/L	97
19) 1,1-Dichloroethane	3.45	63	10078	2.936	ug/L	99
20) cis-1,2-Dichloroethene	4.23	96	65346	33.385	ug/L	99
30) 1,1,1-Trichloroethane	4.92	97	67130	23.746	ug/L	100
31) Carbon tetrachloride	4.92	117	9195	3.630	ug/L	99
34) Trichloroethene	6.19	95	216970	122.726	ug/L	99
37) 1,2-Dichloropropane	6.33	63	11482	5.673	ug/L #	86
39) cis-1,3-Dichloropropene	7.23	75	2423	0.848	ug/L #	57
44) trans-1,3-Dichloropropene	7.85	75	1973	0.737	ug/L	93
52) Ethylbenzene	9.25	91	3422	0.438	ug/L	96
53) m,p-Xylene	9.38	106	4027	1.341	ug/L	94
54) o-xylene	9.78	106	1522	0.520	ug/L	84

Data Path : Z:\VOASRV\HPCHEM1\MSVOA_U\DATA\VU091718\
Quantitation Report (Not Reviewed)

Data File : VU026830.D
Acq On : 17 Sep 2018 18:59
Operator : MD/SY
Sample : J4864-01 1000X
Misc : 5.0mL/MSVOA_U/WATER
ALS Vial : 13 Sample Multiplier: 1

Instrument :
MSVOA_U
ClientSampleId :
C0D07

Quant Time: Sep 18 01:38:33 2018
Quant Method : Z:\VOASRV\HPCHEM1\MSVOA_U\METHOD\SOMULM091718WMA.M
Quant Title : VOC Analysis
QLast Update : Tue Sep 18 01:34:58 2018
Response via : Initial Calibration

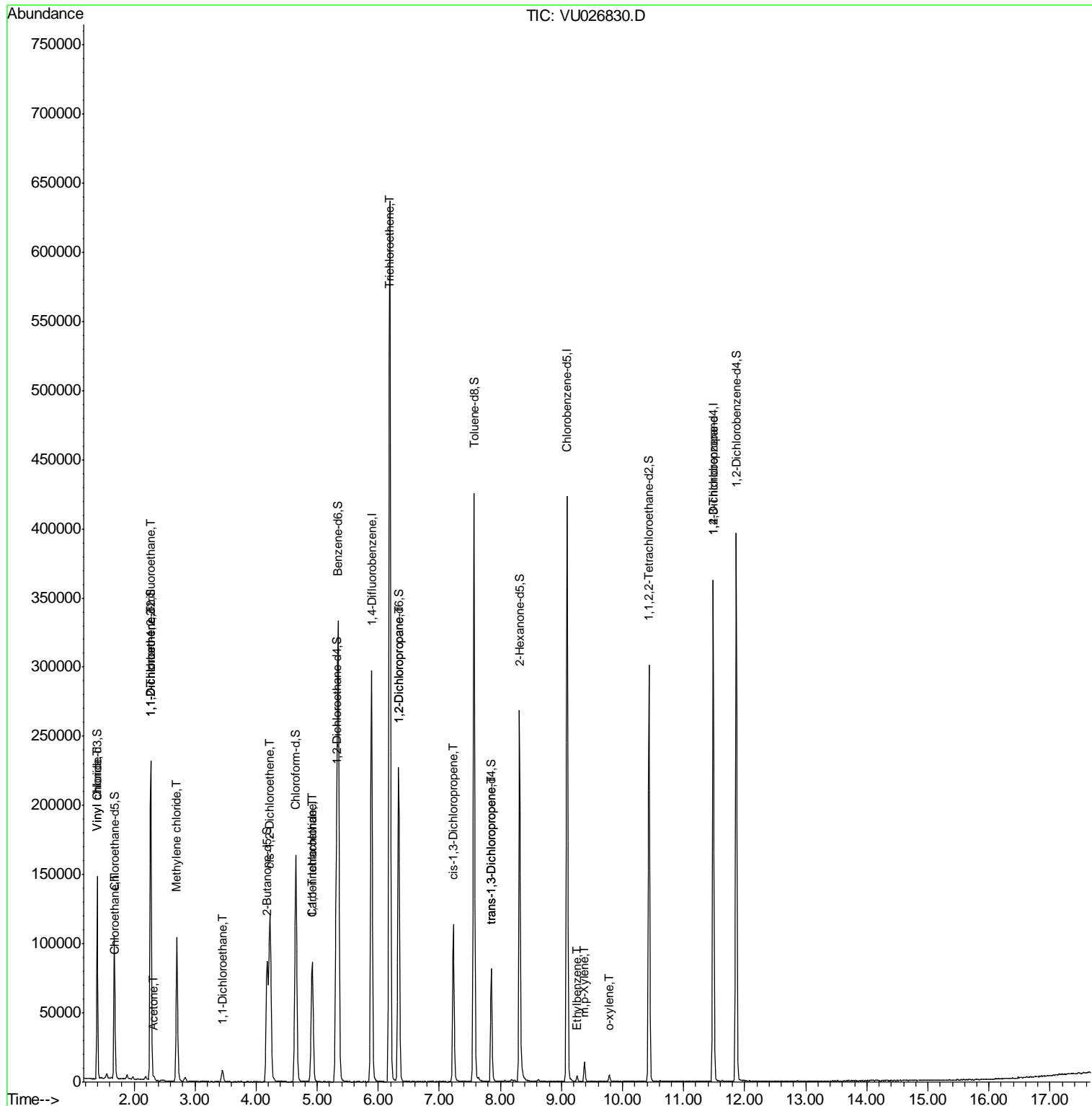
Internal Standards	R.T.	QIon	Response	Conc	Units	Dev(Min)
59) 1,2,3-Trichloropropane	11.48	75	11501	4.744	ug/L	95

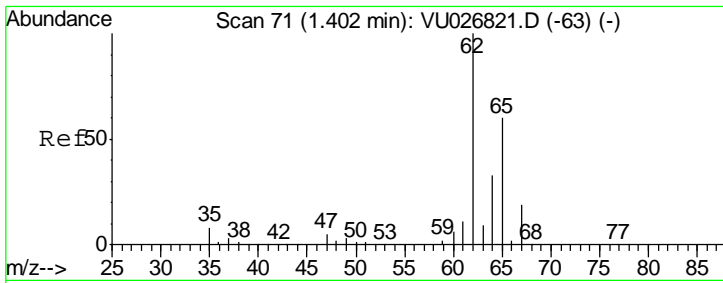
(#) = qualifier out of range (m) = manual integration (+) = signals summed

Data File : VU026830.D
Acq On : 17 Sep 2018 18:59
Operator : MD/SY
Sample : J4864-01 1000X
Misc : 5.0mL/MSVOA_U/WATER
ALS Vial : 13 Sample Multiplier: 1

Instrument :
MSVOA_U
ClientSampled :
C0D07

Quant Time: Sep 18 01:38:33 2018
Quant Method : Z:\VOASRV\HPCHEM1\MSVOA_U\METHOD\SOMULM091718WMA.M
Quant Title : VOC Analysis
QLast Update : Tue Sep 18 01:34:58 2018
Response via : Initial Calibration

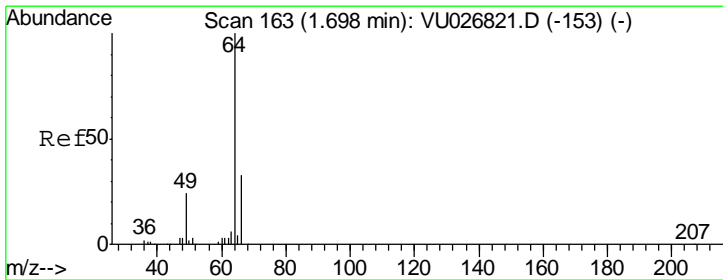
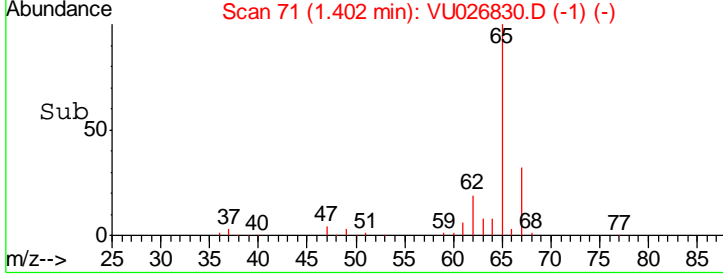
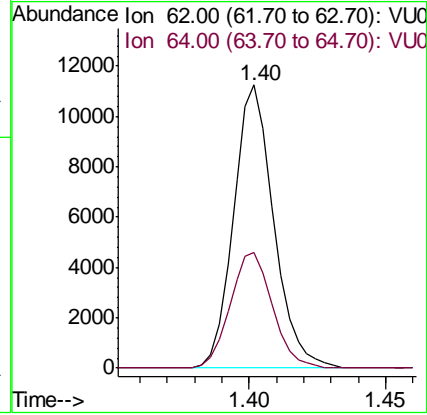
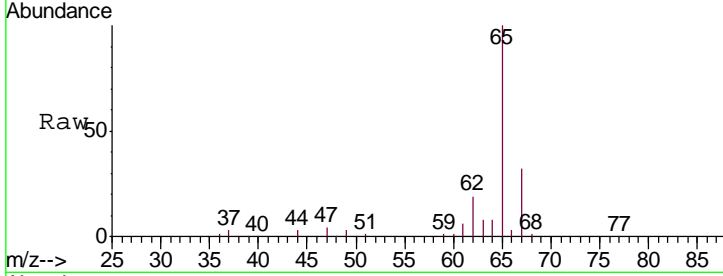




#5
 Vinyl chloride
 Concen: 4.929 ug/L
 RT: 1.40 min Scan# 71
 Delta R.T. 0.00 min
 Lab File: VU026830.D
 Acq: 17 Sep 2018 18:59

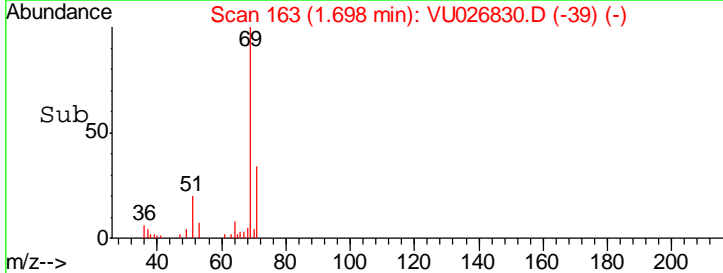
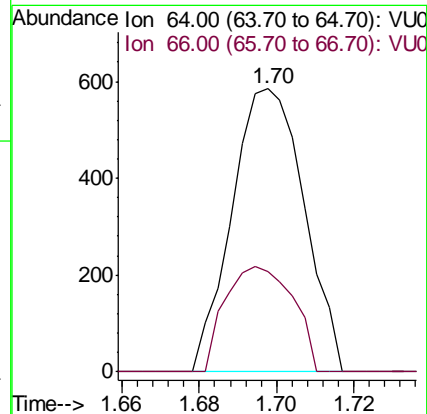
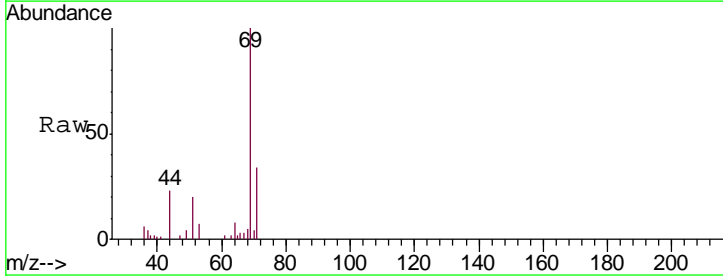
Instrument : MSVOA_U
 ClientSampled : C0D07

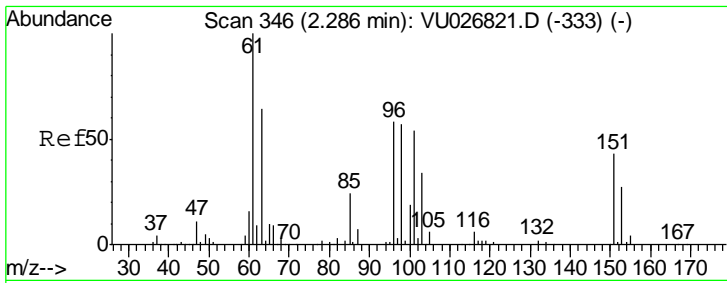
Tgt Ion	Resp	Lower	Upper
62	11523		
64	40.7	22.7	42.3



#8
 Chloroethane
 Concen: 0.517 ug/L
 RT: 1.70 min Scan# 163
 Delta R.T. 0.00 min
 Lab File: VU026830.D
 Acq: 17 Sep 2018 18:59

Tgt Ion	Resp	Lower	Upper
64	757		
66	35.2	23.0	42.8

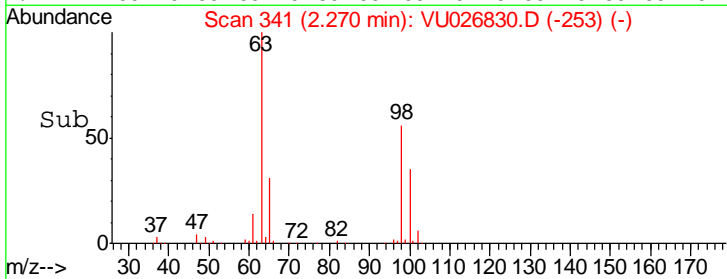
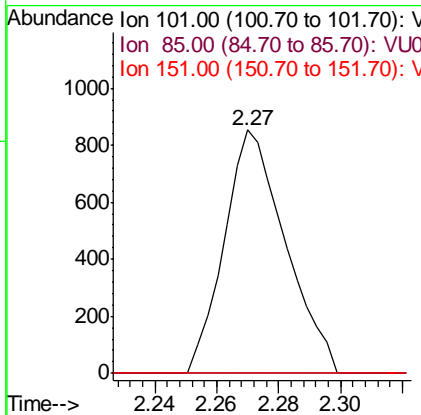
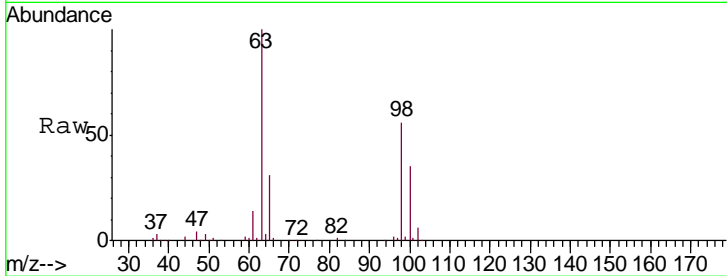




#10
 1,1,2-Trichloro-1,2,2-trifluoroethane
 Concen: 0.682 ug/L
 RT: 2.27 min Scan# 341
 Delta R.T. -0.02 min
 Lab File: VU026830.D
 Acq: 17 Sep 2018 18:59

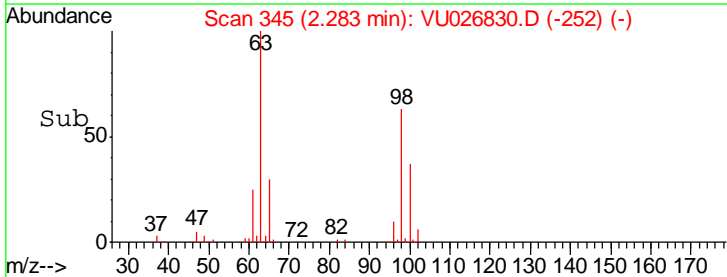
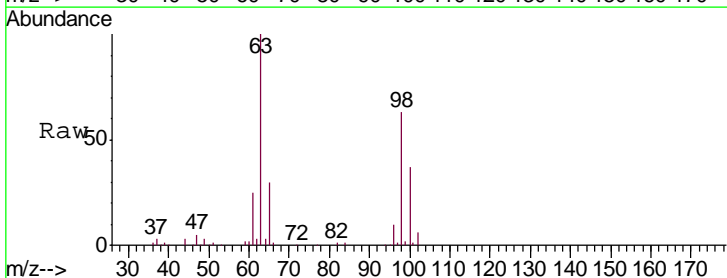
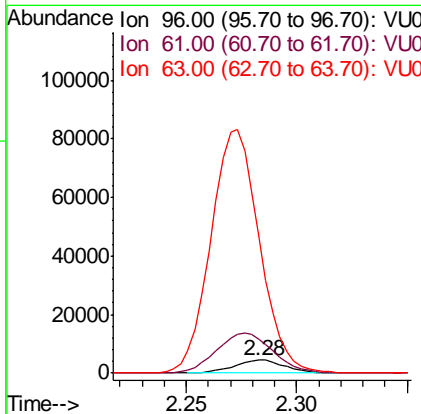
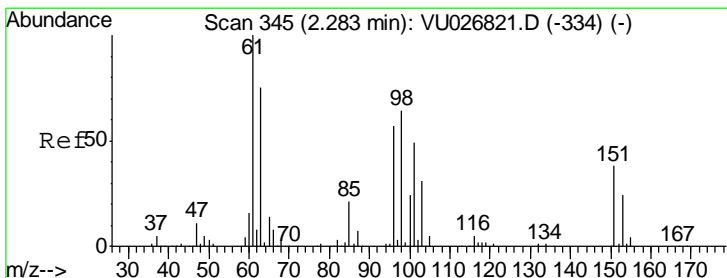
Instrument :
 MSVOA_U
 ClientSampled :
 C0D07

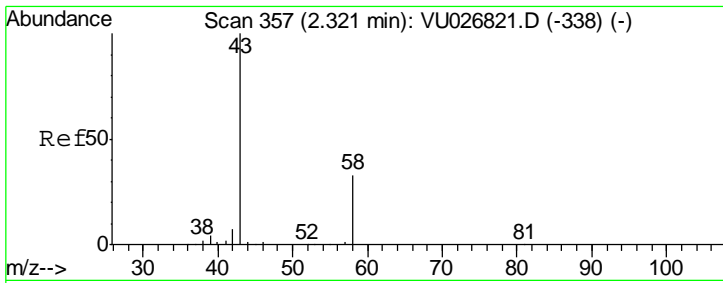
Tgt Ion	Resp	Lower	Upper
101	1173		
101	100		
85	0.0	34.6	52.0#
151	0.0	63.0	94.4#



#12
 1,1-Dichloroethene
 Concen: 4.390 ug/L
 RT: 2.28 min Scan# 345
 Delta R.T. 0.00 min
 Lab File: VU026830.D
 Acq: 17 Sep 2018 18:59

Tgt Ion	Resp	Lower	Upper
96	7094		
96	100		
61	259.1	124.0	230.4#
63	1036.6	97.7	181.5#

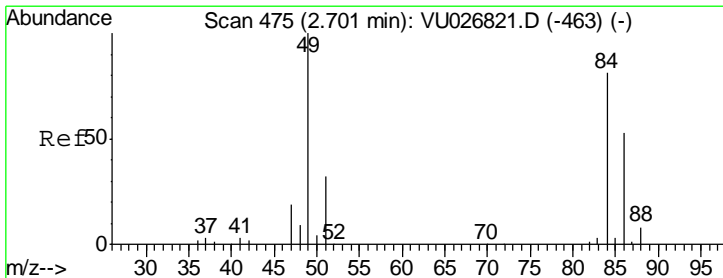
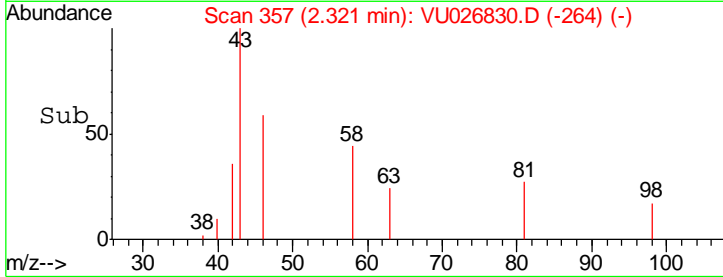
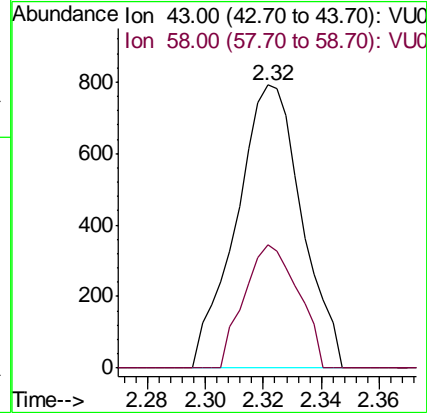
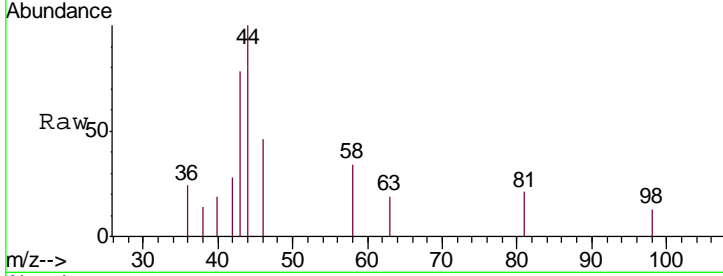




#13
 Acetone
 Concen: 1.035 ug/L
 RT: 2.32 min Scan# 357
 Delta R.T. 0.00 min
 Lab File: VU026830.D
 Acq: 17 Sep 2018 18:59

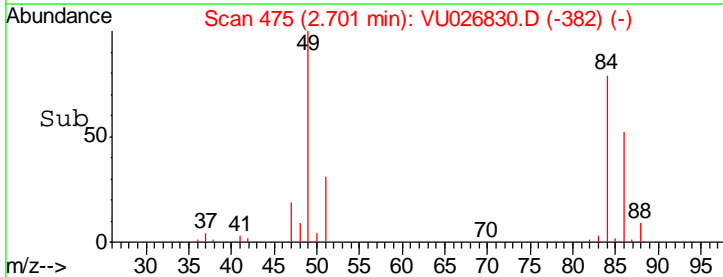
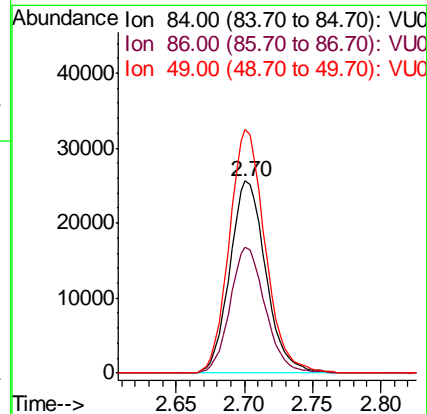
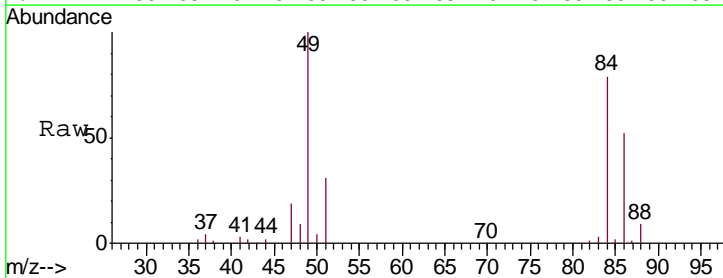
Instrument :
 MSVOA_U
 ClientSampled :
 C0D07

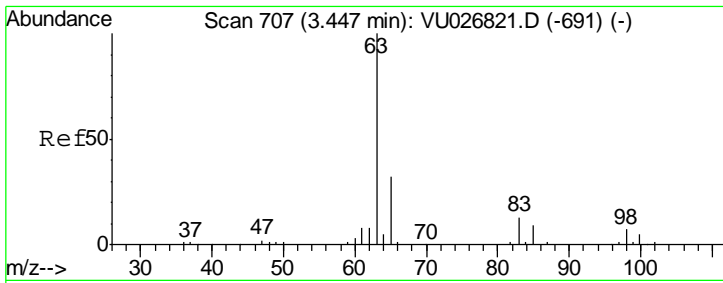
Tgt Ion	Resp	Lower	Upper
43	1244		
58	35.9	0.0	64.6



#16
 Methylene chloride
 Concen: 22.869 ug/L
 RT: 2.70 min Scan# 475
 Delta R.T. 0.00 min
 Lab File: VU026830.D
 Acq: 17 Sep 2018 18:59

Tgt Ion	Resp	Lower	Upper
84	46976		
86	65.7	45.3	84.1
49	126.9	86.2	160.2

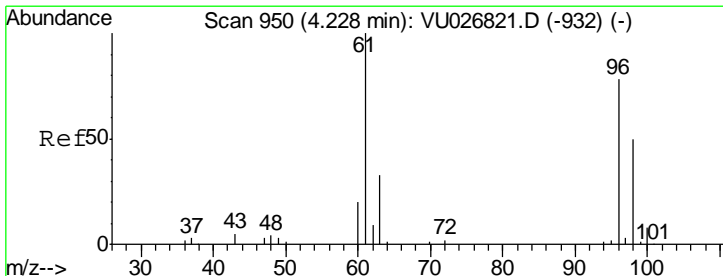
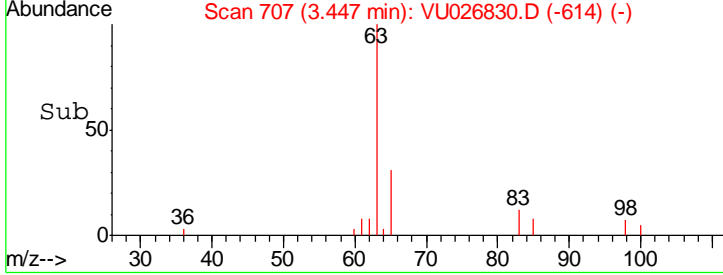
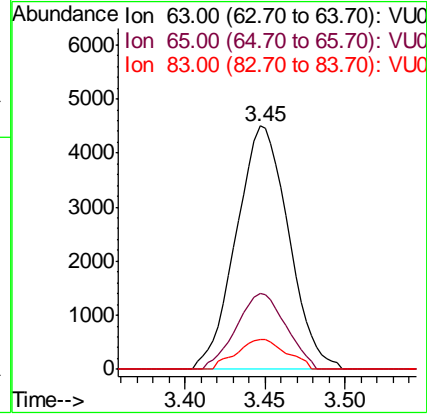
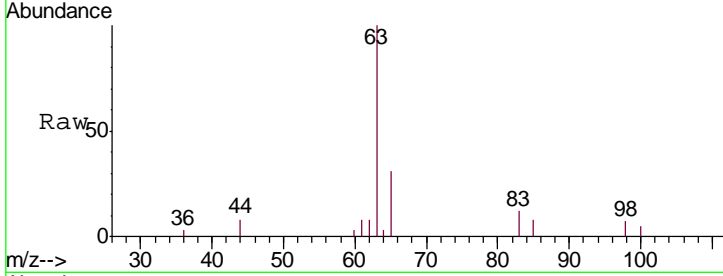




#19
 1,1-Dichloroethane
 Concen: 2.936 ug/L
 RT: 3.45 min Scan# 707
 Delta R.T. 0.00 min
 Lab File: VU026830.D
 Acq: 17 Sep 2018 18:59

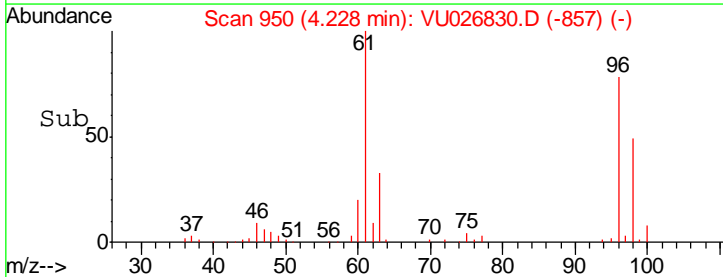
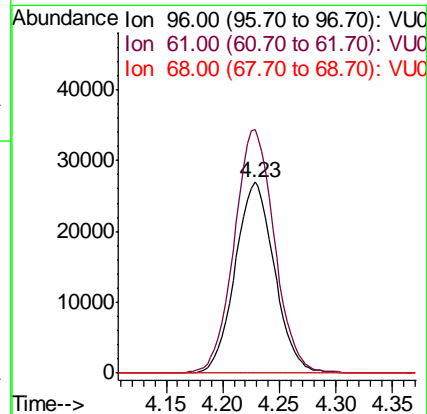
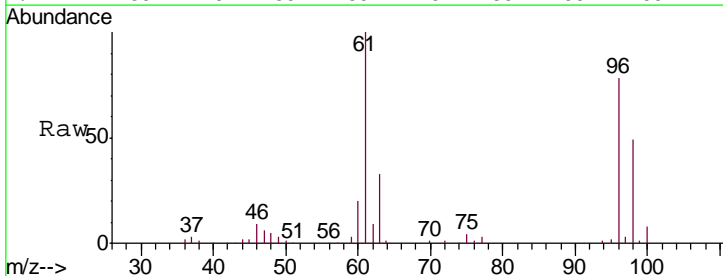
Instrument :
 MSVOA_U
 ClientSampleID :
 C0D07

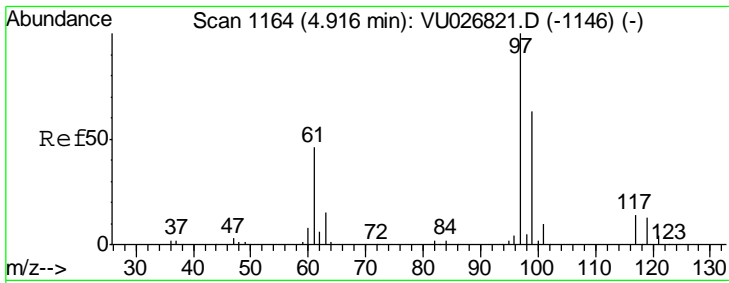
Tgt Ion	Resp	Lower	Upper
63	10078		
65	31.3	22.1	41.1
83	12.1	9.3	17.3



#20
 cis-1,2-Dichloroethene
 Concen: 33.385 ug/L
 RT: 4.23 min Scan# 950
 Delta R.T. 0.00 min
 Lab File: VU026830.D
 Acq: 17 Sep 2018 18:59

Tgt Ion	Resp	Lower	Upper
96	65346		
61	127.5	90.2	167.4
68	0.0	0.0	0.0

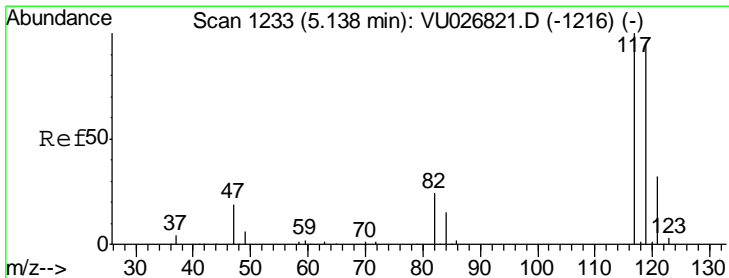
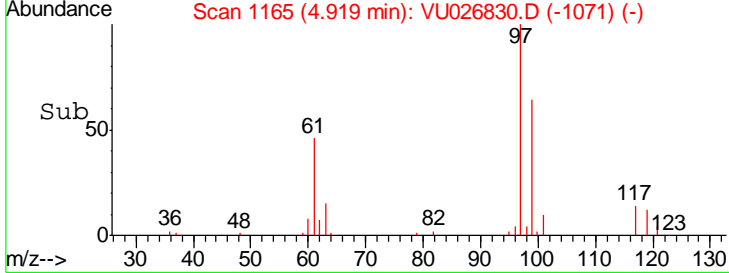
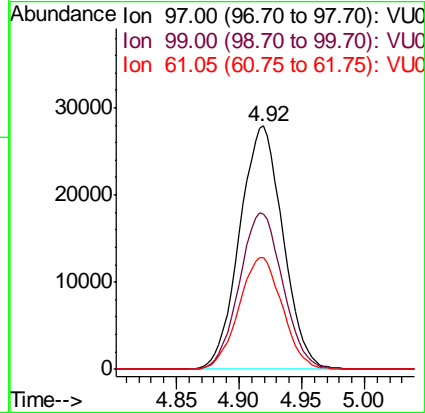
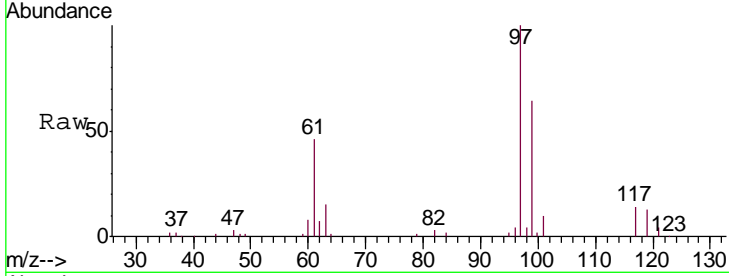




#30
 1,1,1-Trichloroethane
 Concen: 23.746 ug/L
 RT: 4.92 min Scan# 1165
 Delta R.T. 0.00 min
 Lab File: VU026830.D
 Acq: 17 Sep 2018 18:59

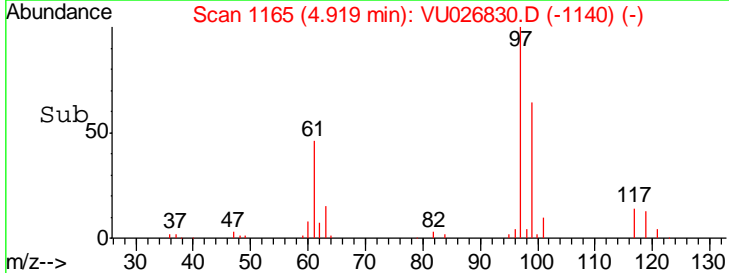
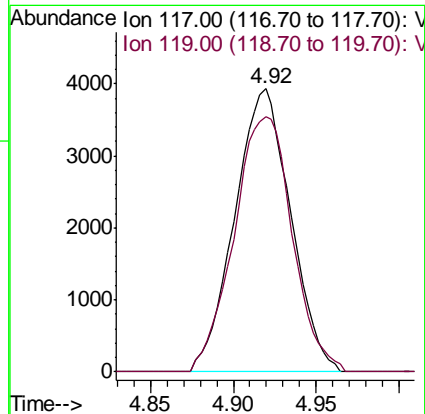
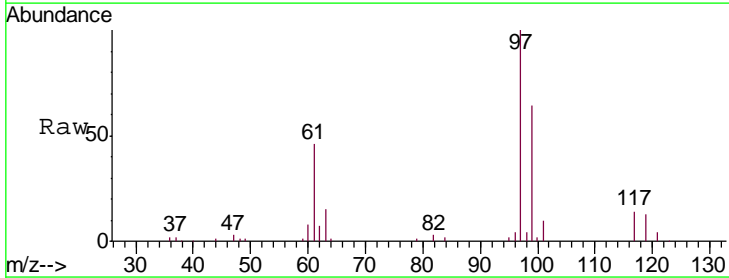
Instrument : MSVOA_U
 ClientSampled : C0D07

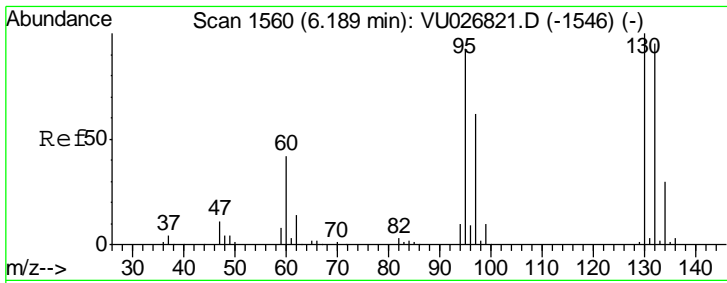
Tgt Ion	Resp	Lower	Upper
97	67130		
99	64.5	51.8	77.8
61	45.8	36.6	54.8



#31
 Carbon tetrachloride
 Concen: 3.630 ug/L
 RT: 4.92 min Scan# 1165
 Delta R.T. -0.22 min
 Lab File: VU026830.D
 Acq: 17 Sep 2018 18:59

Tgt Ion	Resp	Lower	Upper
117	9195		
119	94.2	76.3	114.5



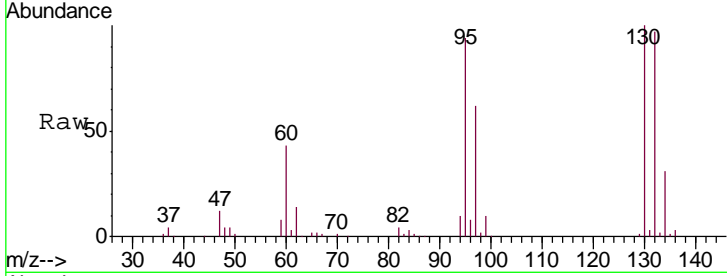


#34
 Trichloroethene
 Concen: 122.726 ug/L
 RT: 6.19 min Scan# 1559
 Delta R.T. -0.00 min
 Lab File: VU026830.D
 Acq: 17 Sep 2018 18:59

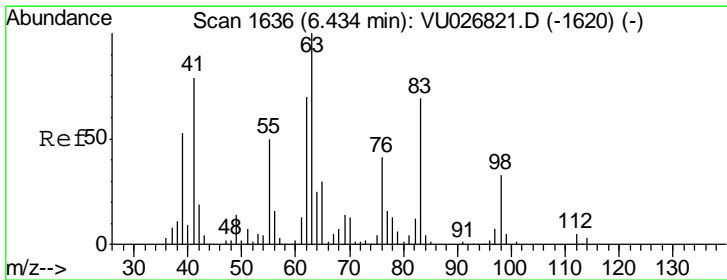
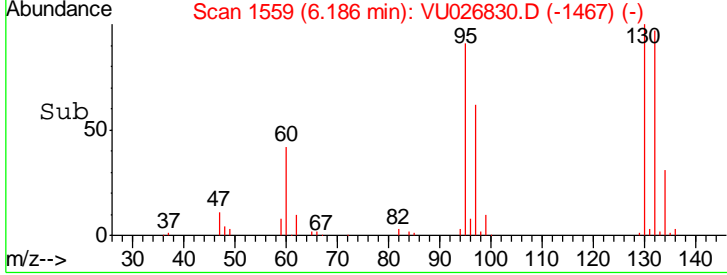
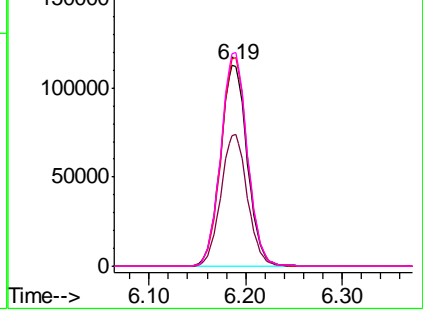
Instrument : MSVOA_U
 ClientSampled : C0D07

Tgt Ion: 95 Resp: 216970

Ion	Ratio	Lower	Upper
95	100		
97	65.1	46.3	85.9
132	102.7	71.7	133.1
130	105.8	75.3	139.8



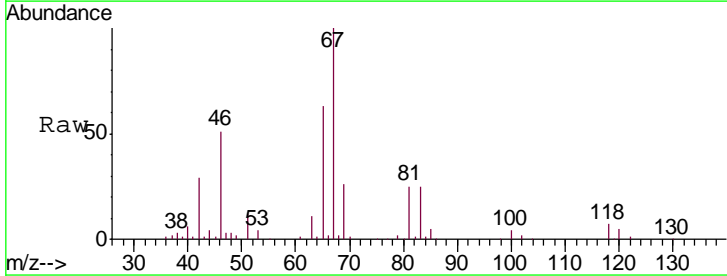
Abundance Ion 95.00 (94.70 to 95.70): VU0
 Ion 97.00 (96.70 to 97.70): VU0
 Ion 132.00 (131.70 to 132.70): V
 Ion 130.00 (129.70 to 130.70): V



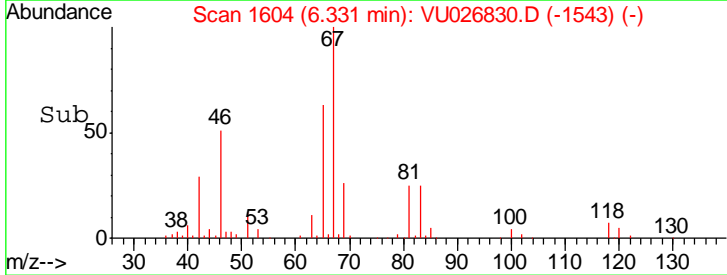
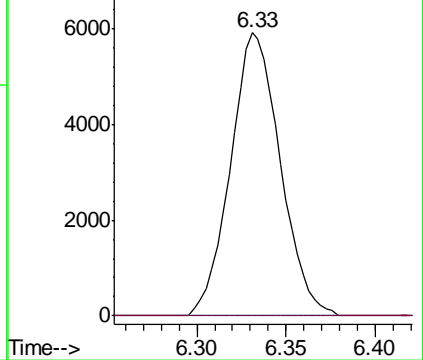
#37
 1,2-Dichloropropane
 Concen: 5.673 ug/L
 RT: 6.33 min Scan# 1604
 Delta R.T. -0.10 min
 Lab File: VU026830.D
 Acq: 17 Sep 2018 18:59

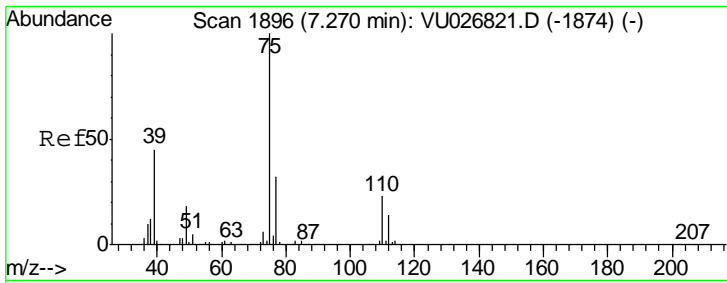
Tgt Ion: 63 Resp: 11482

Ion	Ratio	Lower	Upper
63	100		
112	0.0	3.7	5.5#



Abundance Ion 63.00 (62.70 to 63.70): VU0
 Ion 112.00 (111.70 to 112.70): V

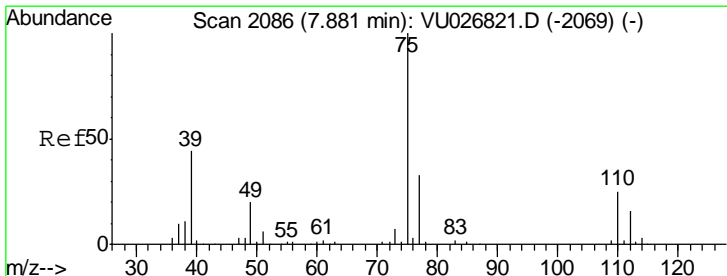
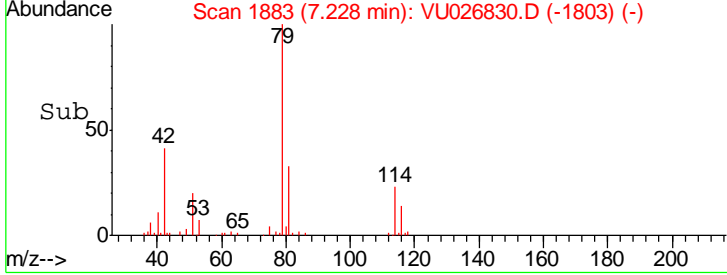
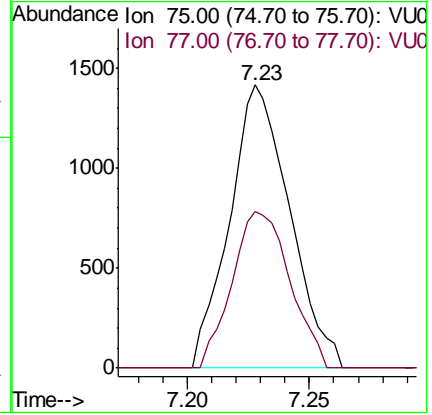
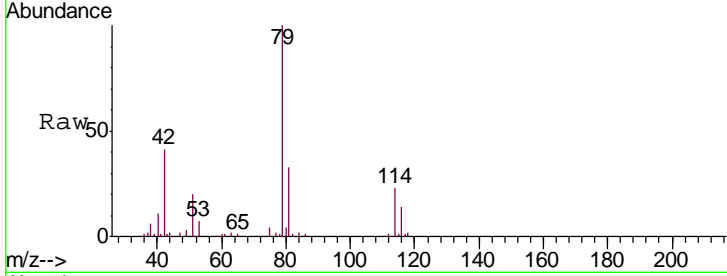




#39
 cis-1,3-Dichloropropene
 Concen: 0.848 ug/L
 RT: 7.23 min Scan# 1883
 Delta R.T. -0.04 min
 Lab File: VU026830.D
 Acq: 17 Sep 2018 18:59

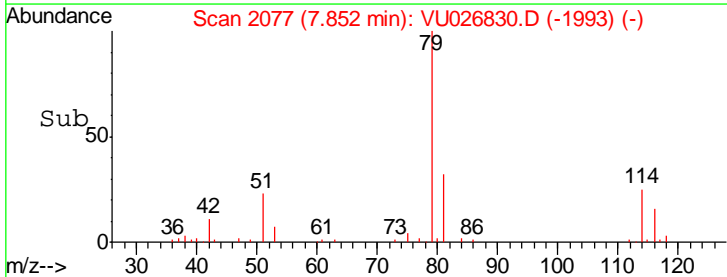
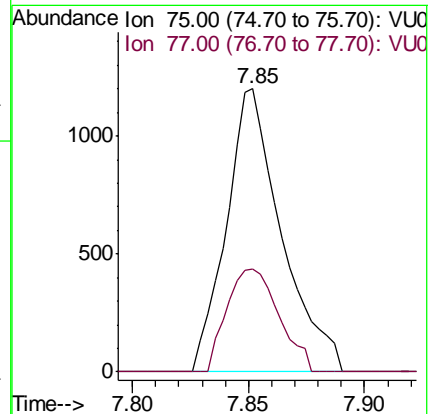
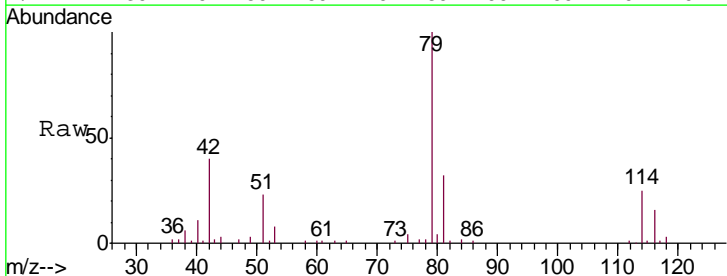
Instrument : MSVOA_U
 ClientSampled : C0D07

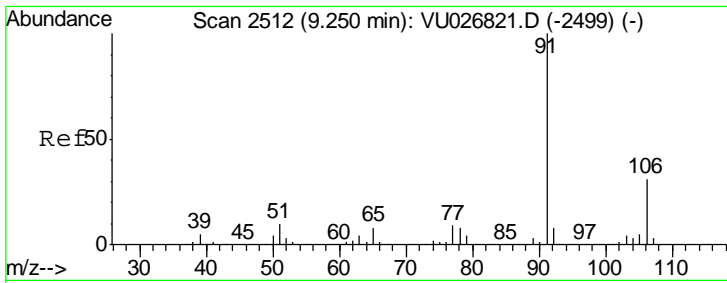
Tgt Ion: 75 Resp: 2423
 Ion Ratio Lower Upper
 75 100
 77 55.3 22.1 41.1#



#44
 trans-1,3-Dichloropropene
 Concen: 0.737 ug/L
 RT: 7.85 min Scan# 2077
 Delta R.T. -0.03 min
 Lab File: VU026830.D
 Acq: 17 Sep 2018 18:59

Tgt Ion: 75 Resp: 1973
 Ion Ratio Lower Upper
 75 100
 77 36.5 22.8 42.4

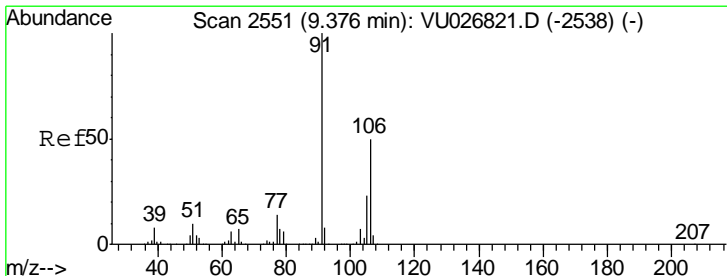
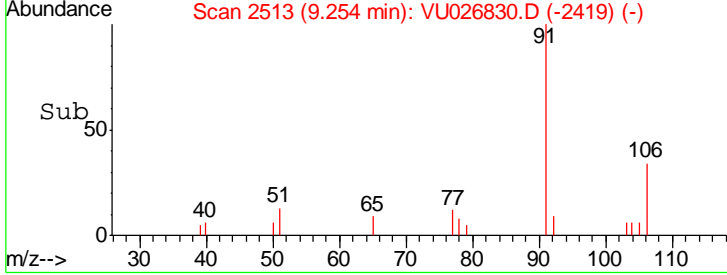
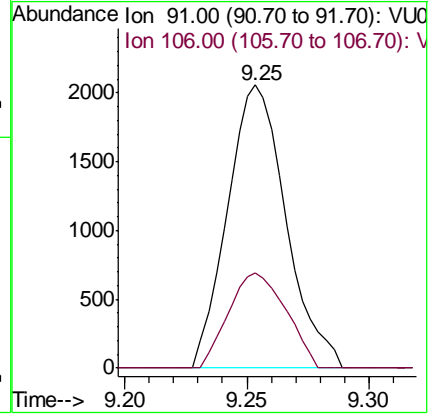
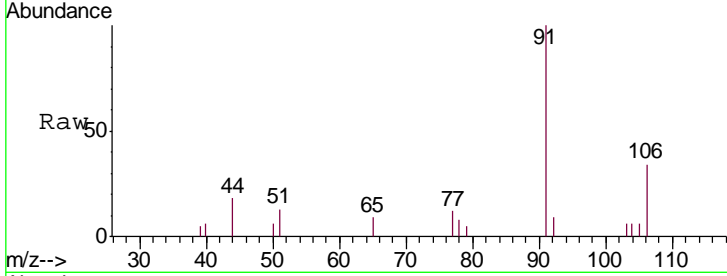




#52
 Ethylbenzene
 Concen: 0.438 ug/L
 RT: 9.25 min Scan# 2513
 Delta R.T. 0.00 min
 Lab File: VU026830.D
 Acq: 17 Sep 2018 18:59

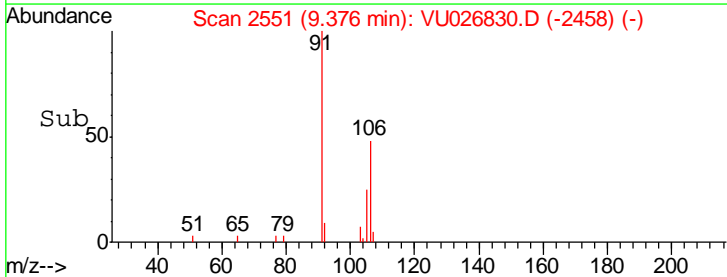
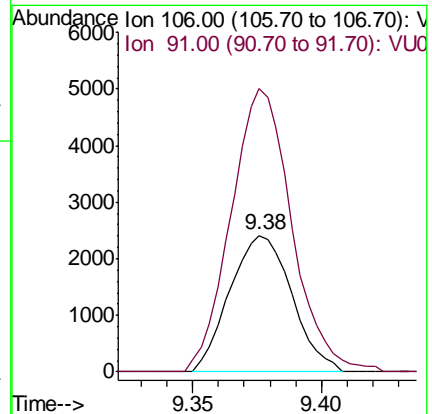
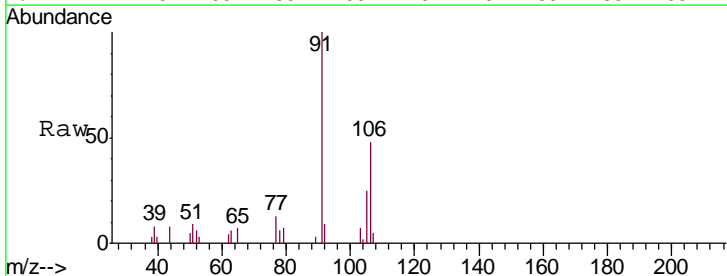
Instrument : MSVOA_U
 ClientSampled : C0D07

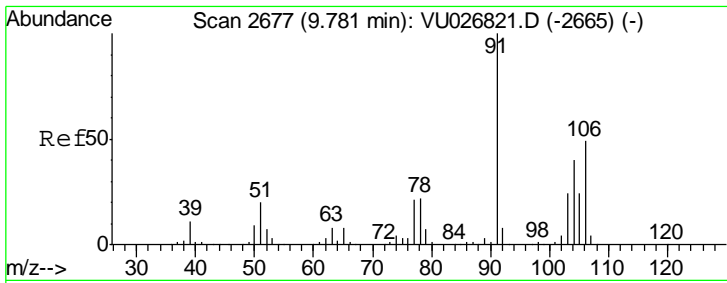
Tgt Ion: 91 Resp: 3422
 Ion Ratio Lower Upper
 91 100
 106 33.6 22.0 40.8



#53
 m,p-Xylene
 Concen: 1.341 ug/L
 RT: 9.38 min Scan# 2551
 Delta R.T. 0.00 min
 Lab File: VU026830.D
 Acq: 17 Sep 2018 18:59

Tgt Ion: 106 Resp: 4027
 Ion Ratio Lower Upper
 106 100
 91 207.8 139.2 258.6

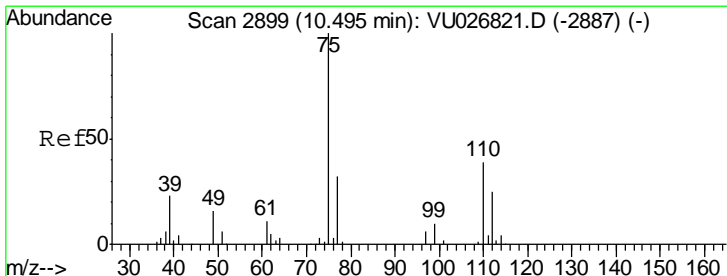
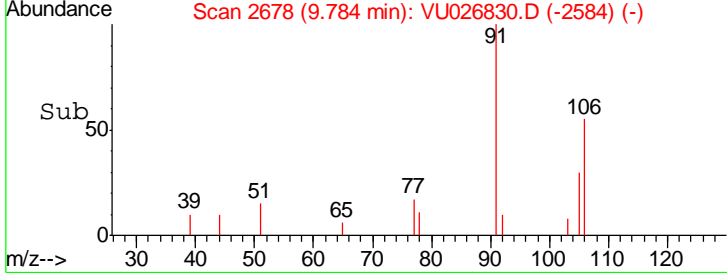
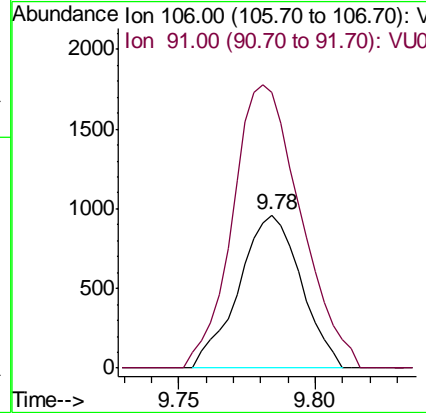
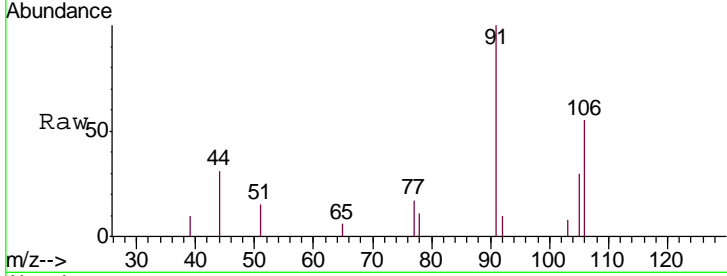




#54
 o-xylene
 Concen: 0.520 ug/L
 RT: 9.78 min Scan# 2678
 Delta R.T. 0.00 min
 Lab File: VU026830.D
 Acq: 17 Sep 2018 18:59

Instrument : MSVOA_U
 ClientSampled : C0D07

Tgt Ion: 106 Resp: 1522
 Ion Ratio Lower Upper
 106 100
 91 180.3 143.1 265.9



#59
 1,2,3-Trichloropropane
 Concen: 4.744 ug/L
 RT: 11.48 min Scan# 3207
 Delta R.T. 0.99 min
 Lab File: VU026830.D
 Acq: 17 Sep 2018 18:59

Tgt Ion: 75 Resp: 11501
 Ion Ratio Lower Upper
 75 100
 77 34.5 25.5 38.3

