

Data Path : Z:\VOASRV\HPCHEM1\MSVOA U\DATA\VU091818\
 Data File : VU026881.D
 Acq On : 18 Sep 2018 22:36
 Operator : MD/SY
 Sample : J4896-17DL 500X
 Misc : 5.0mL/MSVOA U/WATER
 ALS Vial : 39 Sample Multiplier: 1

Instrument :
 MSVOA_U
 ClientSampleId :
 C08P3DL

Quant Time: Sep 19 08:06:38 2018
 Quant Method : Z:\VOASRV\HPCHEM1\MSVOA_U\METHOD\SOMULM091718WMA.M
 Quant Title : VOC Analysis
 QLast Update : Wed Sep 19 07:38:56 2018
 Response via : Initial Calibration

Internal Standards	R.T.	QIon	Response	Conc	Units	Dev(Min)
1) 1,4-Difluorobenzene	5.89	114	227006	50.00	ug/L	0.00
28) Chlorobenzene-d5	9.09	117	216760	50.00	ug/L	0.00
60) 1,4-Dichlorobenzene-d4	11.48	152	89151	50.00	ug/L	0.00

System Monitoring Compounds

4) Vinyl Chloride-d3	1.40	65	53530	31.88	ug/L	0.00
Spiked Amount	50.000	Range	60 - 135	Recovery	=	63.76%
7) Chloroethane-d5	1.68	69	52615	36.61	ug/L	0.00
Spiked Amount	50.000	Range	70 - 130	Recovery	=	73.22%
11) 1,1-Dichloroethene-d2	2.27	63	81619	25.69	ug/L	0.00
Spiked Amount	50.000	Range	60 - 125	Recovery	=	51.38%#
21) 2-Butanone-d5	4.18	46	122355	109.80	ug/L	0.00
Spiked Amount	100.000	Range	40 - 130	Recovery	=	109.80%
24) Chloroform-d	4.65	84	130991	42.05	ug/L	0.00
Spiked Amount	50.000	Range	70 - 125	Recovery	=	84.10%
26) 1,2-Dichloroethane-d4	5.31	65	86915	44.31	ug/L	0.00
Spiked Amount	50.000	Range	70 - 125	Recovery	=	88.62%
32) Benzene-d6	5.34	84	243271	40.05	ug/L	0.00
Spiked Amount	50.000	Range	70 - 125	Recovery	=	80.10%
36) 1,2-Dichloropropane-d6	6.33	67	86684	44.29	ug/L	0.00
Spiked Amount	50.000	Range	70 - 120	Recovery	=	88.58%
41) Toluene-d8	7.57	98	195163	35.56	ug/L	0.00
Spiked Amount	50.000	Range	80 - 120	Recovery	=	71.12%#
43) trans-1,3-Dichloropropene-	7.85	79	33723	38.59	ug/L	0.00
Spiked Amount	50.000	Range	60 - 125	Recovery	=	77.18%
47) 2-Hexanone-d5	8.31	63	82175	106.82	ug/L	0.00
Spiked Amount	100.000	Range	45 - 130	Recovery	=	106.82%
57) 1,1,2,2-Tetrachloroethane-	10.43	84	129746	47.54	ug/L	0.00
Spiked Amount	50.000	Range	65 - 120	Recovery	=	95.08%
64) 1,2-Dichlorobenzene-d4	11.86	152	87211	47.02	ug/L	0.00
Spiked Amount	50.000	Range	80 - 120	Recovery	=	94.04%

Target Compounds

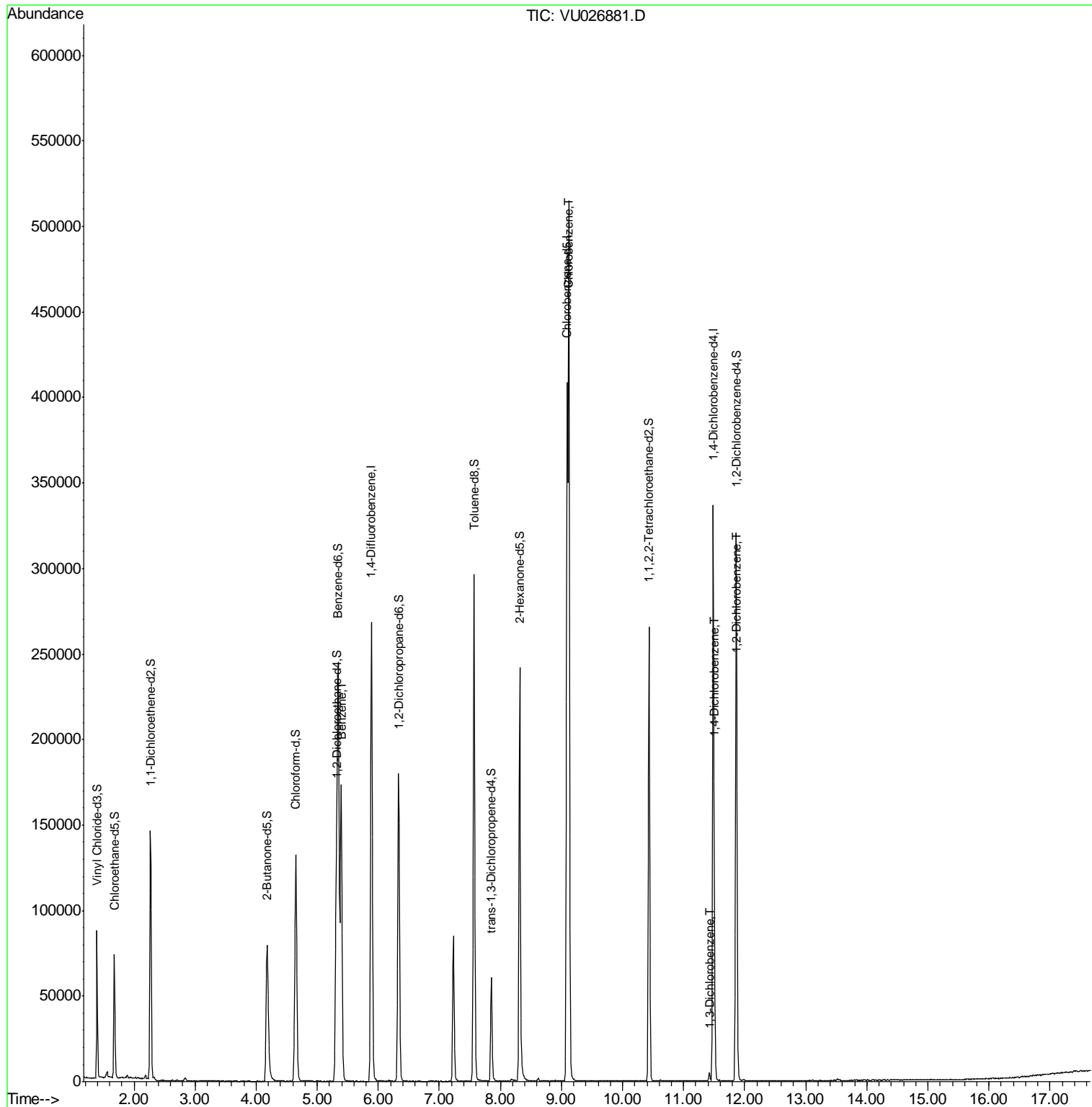
Target Compounds	R.T.	QIon	Response	Conc	Units	Ovalue
33) Benzene	5.39	78	169873	25.277	ug/L	100
51) Chlorobenzene	9.12	112	273050	59.171	ug/L	99
62) 1,3-Dichlorobenzene	11.42	146	2438	0.897	ug/L	94
63) 1,4-Dichlorobenzene	11.51	146	13631	4.555	ug/L	99
65) 1,2-Dichlorobenzene	11.88	146	5558	1.847	ug/L	98

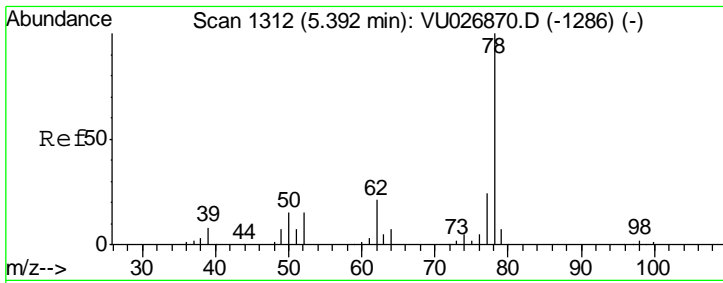
(#) = qualifier out of range (m) = manual integration (+) = signals summed

Data Path : Z:\VOASRV\HPCHEM1\MSVOA U\DATA\VU091818\
 Data File : VU026881.D
 Acq On : 18 Sep 2018 22:36
 Operator : MD/SY
 Sample : J4896-17DL 500X
 Misc : 5.0mL/MSVOA U/WATER
 ALS Vial : 39 Sample Multiplier: 1

Instrument :
 MSVOA_U
 ClientSampled :
 C08P3DL

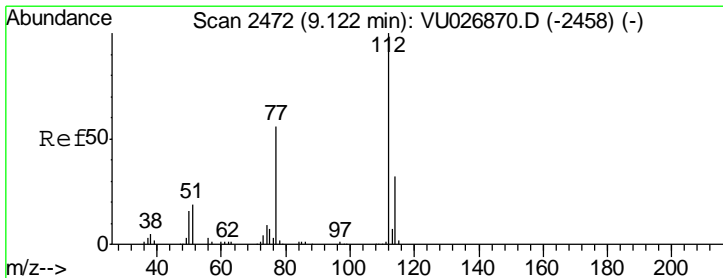
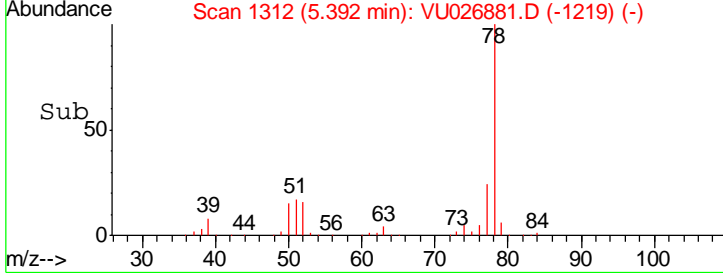
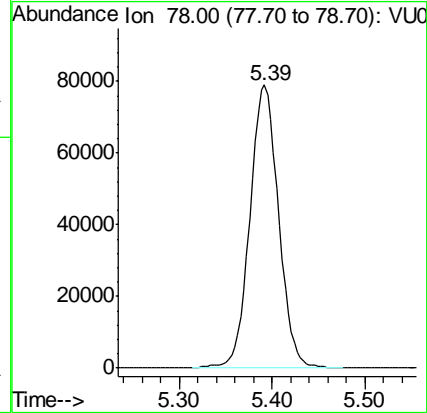
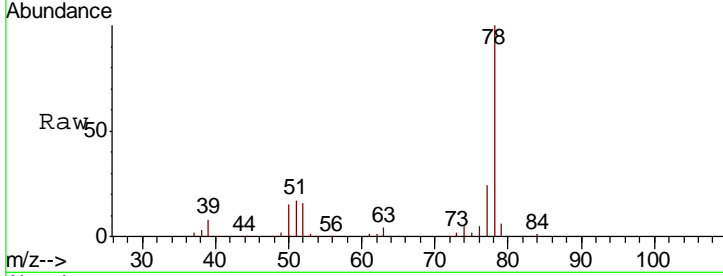
Quant Time: Sep 19 08:06:38 2018
 Quant Method : Z:\VOASRV\HPCHEM1\MSVOA_U\METHOD\SOMULM091718WMA.M
 Quant Title : VOC Analysis
 QLast Update : Wed Sep 19 07:38:56 2018
 Response via : Initial Calibration





#33
 Benzene
 Concen: 25.277 ug/L
 RT: 5.39 min Scan# 1312
 Delta R.T. -0.00 min
 Lab File: VU026881.D
 Acq: 18 Sep 2018 22:36
 Tgt Ion: 78 Resp: 169873

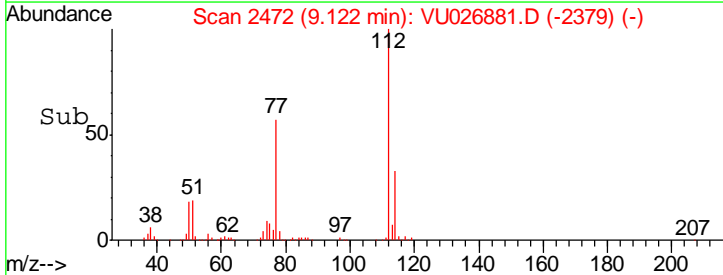
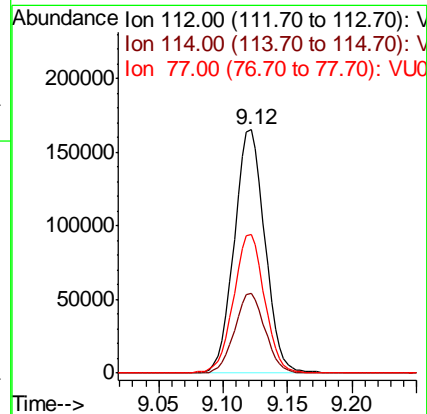
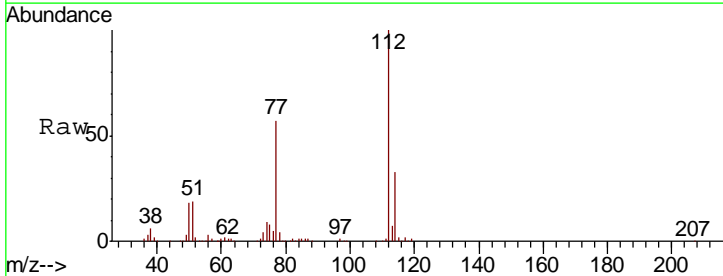
Instrument :
 MSVOA_U
 ClientSampled :
 C08P3DL

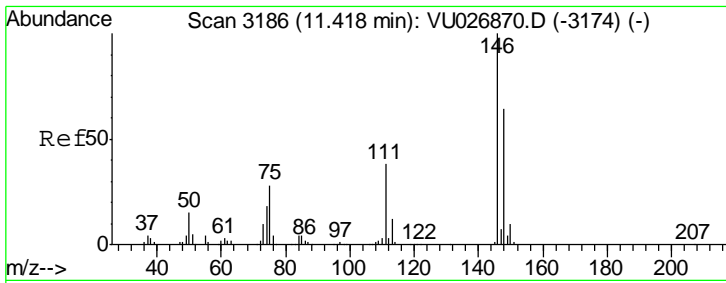


#51
 Chlorobenzene
 Concen: 59.171 ug/L
 RT: 9.12 min Scan# 2472
 Delta R.T. -0.00 min
 Lab File: VU026881.D
 Acq: 18 Sep 2018 22:36

Tgt Ion: 112 Resp: 273050

Ion	Ratio	Lower	Upper
112	100		
114	32.7	22.3	41.5
77	57.2	45.1	67.7



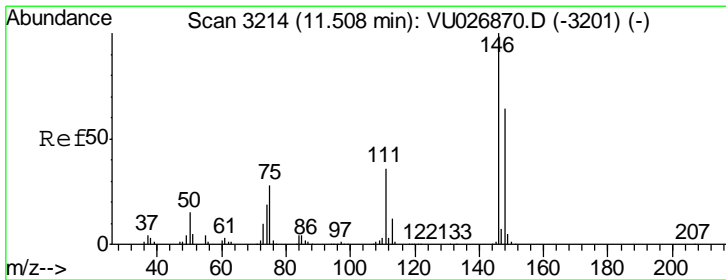
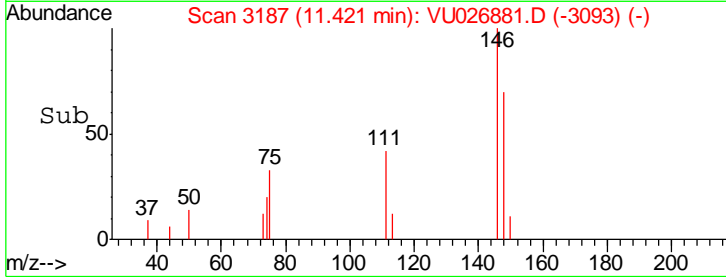
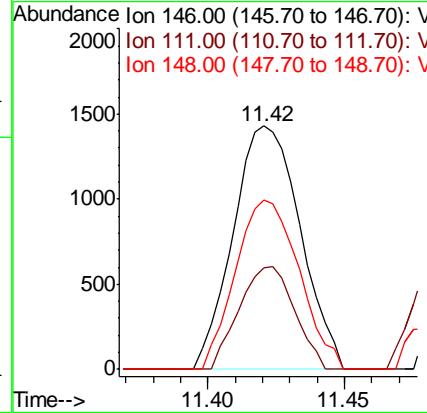
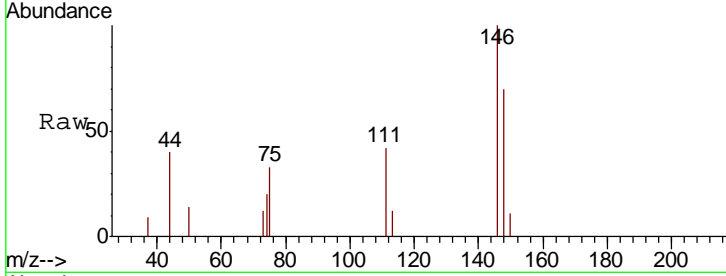


#62
 1,3-Dichlorobenzene
 Concen: 0.897 ug/L
 RT: 11.42 min Scan# 3187
 Delta R.T. 0.00 min
 Lab File: VU026881.D
 Acq: 18 Sep 2018 22:36

Instrument :
 MSVOA_U
 ClientSampled :
 C08P3DL

Tgt Ion:146 Resp: 2438

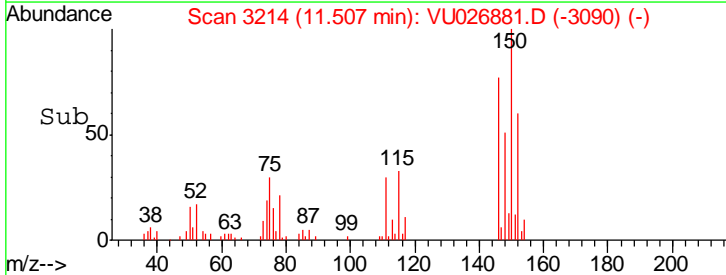
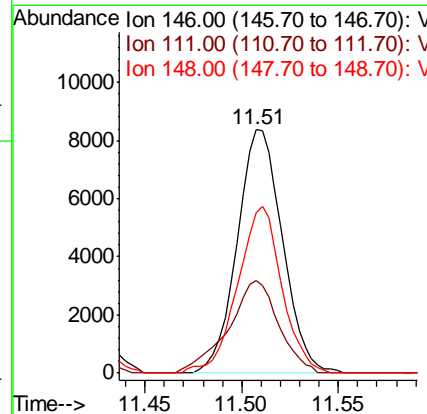
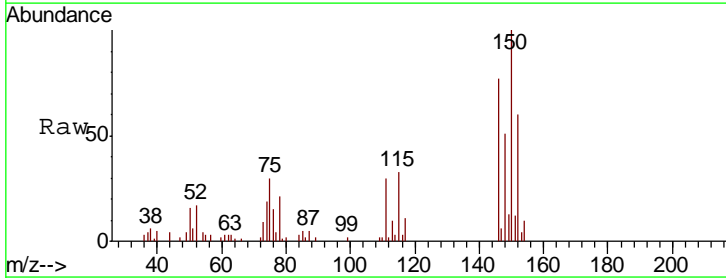
Ion	Ratio	Lower	Upper
146	100		
111	41.6	26.7	49.7
148	69.5	44.9	83.5

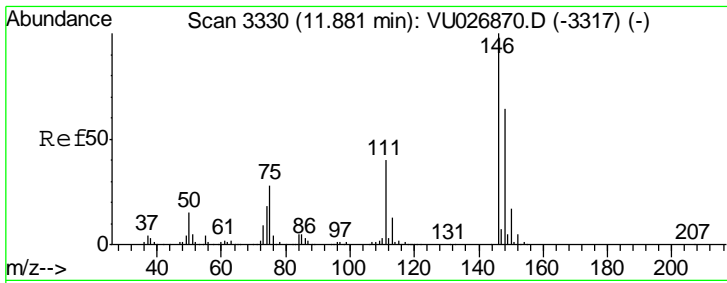


#63
 1,4-Dichlorobenzene
 Concen: 4.555 ug/L
 RT: 11.51 min Scan# 3214
 Delta R.T. -0.00 min
 Lab File: VU026881.D
 Acq: 18 Sep 2018 22:36

Tgt Ion:146 Resp: 13631

Ion	Ratio	Lower	Upper
146	100		
111	38.1	26.0	48.2
148	65.9	45.8	85.2





#65
 1,2-Dichlorobenzene
 Concen: 1.847 ug/L
 RT: 11.88 min Scan# 3330
 Delta R.T. -0.00 min
 Lab File: VU026881.D
 Acq: 18 Sep 2018 22:36

Instrument :
 MSVOA_U
 ClientSampled :
 C08P3DL

Tot Ion	Resp	Lower	Upper
146	100		
111	40.2	31.4	47.0
148	62.5	51.4	77.2

