

Data Path : Z:\VOASRV\HPCHEM1\MSVOA U\DATA\VU091818\  
 Data File : VU026850.D  
 Acq On : 18 Sep 2018 10:35  
 Operator : MD/SY  
 Sample : J4896-01 50X  
 Misc : 5.0mL/MSVOA U/WATER  
 ALS Vial : 8 Sample Multiplier: 1

Instrument :  
 MSVOA\_U  
 ClientSampleId :  
 C08N8

Integration Parameters: LSCINT.P

Integrator: RTE  
 Smoothing : OFF  
 Sampling : 1  
 Start Thrs: 0.2  
 Stop Thrs : 0

Filtering: 5  
 Min Area: 0 % of largest Peak  
 Max Peaks: 100  
 Peak Location: TOP

If leading or trailing edge < 100 prefer < Baseline drop else tangent >  
 Peak separation: 5

Method : Z:\VOASRV\HPCHEM1\MSVOA\_U\METHOD\SOMULM091718WMA.M  
 Title : VOC Analysis

Signal : TIC

peak #	R.T. min	first scan	max scan	last scan	PK TY	peak height	corr. area	corr. % max.	% of total
1	1.396	62	69	83	rBV	120971	126673	13.39%	1.835%
2	1.678	149	157	174	rVB	99783	129250	13.67%	1.872%
3	2.273	331	342	356	rBV	208440	314063	33.21%	4.549%
4	2.440	390	394	397	rBV3	497	499	0.05%	0.007%
5	2.617	439	449	451	rBV3	449	534	0.06%	0.008%
6	2.701	470	475	482	rVB5	853	1104	0.12%	0.016%
7	2.759	490	493	498	rBV2	259	195	0.02%	0.003%
8	2.836	506	517	530	rBV2	2432	5285	0.56%	0.077%
9	3.003	566	569	572	rVB2	206	172	0.02%	0.002%
10	3.248	640	645	648	rBV2	193	205	0.02%	0.003%
11	3.267	648	651	655	rVV	170	154	0.02%	0.002%
12	3.833	824	827	832	rBV	143	145	0.02%	0.002%
13	4.177	920	934	964	rBV	85356	227650	24.07%	3.298%
14	4.434	1011	1014	1021	rVB	242	182	0.02%	0.003%
15	4.485	1027	1030	1034	rVB2	195	128	0.01%	0.002%
16	4.649	1063	1081	1112	rBV	159380	372522	39.39%	5.396%
17	4.887	1147	1155	1159	rBV3	564	804	0.09%	0.012%
18	5.125	1225	1229	1232	rBV	130	129	0.01%	0.002%
19	5.225	1257	1260	1266	rVB	165	147	0.02%	0.002%
20	5.344	1272	1297	1321	rBV2	322743	945806	100.00%	13.701%
21	5.527	1351	1354	1358	rBV2	202	154	0.02%	0.002%
22	5.672	1396	1399	1403	rBV	147	154	0.02%	0.002%
23	5.749	1420	1423	1428	rBV	308	184	0.02%	0.003%
24	5.887	1451	1466	1493	rBV	282393	549505	58.10%	7.960%
25	6.180	1554	1557	1561	rBV	220	165	0.02%	0.002%
26	6.331	1590	1604	1629	rVV	219673	435893	46.09%	6.314%
27	6.463	1639	1645	1646	rBV2	209	214	0.02%	0.003%
28	6.646	1698	1702	1705	rVB	292	166	0.02%	0.002%
29	6.804	1745	1751	1755	rBV	156	190	0.02%	0.003%
30	6.855	1762	1767	1775	rVV	555	807	0.09%	0.012%
31	7.009	1808	1815	1820	rBV	129	188	0.02%	0.003%
32	7.228	1870	1883	1902	rBV	108892	193486	20.46%	2.803%
33	7.379	1925	1930	1931	rBV2	478	426	0.05%	0.006%
34	7.456	1950	1954	1956	rVB2	281	157	0.02%	0.002%

Data Path : Z:\VOASRV\HPCHEM1\MSVOA U\DATA\VU091818\  
 Data File : VU026850.D  
 Acq On : 18 Sep 2018 10:35  
 Operator : MD/SY  
 Sample : J4896-01 50X  
 Misc : 5.0mL/MSVOA U/WATER  
 ALS Vial : 8 Sample Multiplier: 1

Instrument :  
 MSVOA\_U  
 ClientSampleId :  
 C08N8

## Integration Parameters: LSCINT.P

Integrator: RTE  
 Smoothing : OFF  
 Sampling : 1  
 Start Thrs: 0.2  
 Stop Thrs : 0

Filtering: 5  
 Min Area: 0 % of largest Peak  
 Max Peaks: 100  
 Peak Location: TOP

If leading or trailing edge < 100 prefer < Baseline drop else tangent >  
 Peak separation: 5

Method : Z:\VOASRV\HPCHEM1\MSVOA\_U\METHOD\SOMULM091718WMA.M  
 Title : VOC Analysis

35	7.566	1974	1988	2008	rBV	414975	713711	75.46%	10.339%
36	7.749	2041	2045	2050	rBV	357	334	0.04%	0.005%
37	7.775	2050	2053	2058	rVB3	382	247	0.03%	0.004%
38	7.804	2058	2062	2066	rBV	247	222	0.02%	0.003%
39	7.852	2066	2077	2095	rBV	78225	132868	14.05%	1.925%
40	7.929	2099	2101	2104	rVB	445	211	0.02%	0.003%
41	7.945	2104	2106	2110	rBV2	318	230	0.02%	0.003%
42	7.977	2113	2116	2118	rVV2	265	140	0.01%	0.002%
43	8.180	2170	2179	2182	rBV3	1482	1973	0.21%	0.029%
44	8.312	2209	2220	2251	rBV	263579	451265	47.71%	6.537%
45	8.488	2272	2275	2281	rVB4	529	425	0.04%	0.006%
46	8.585	2301	2305	2306	rBV	379	240	0.03%	0.003%
47	8.624	2310	2317	2321	rVV3	1143	1620	0.17%	0.023%
48	8.659	2324	2328	2336	rBV	484	677	0.07%	0.010%
49	8.829	2378	2381	2383	rBV2	367	248	0.03%	0.004%
50	8.913	2402	2407	2411	rBV2	276	239	0.03%	0.003%
51	8.987	2426	2430	2431	rBV	192	134	0.01%	0.002%
52	9.000	2431	2434	2438	rVB2	237	210	0.02%	0.003%
53	9.090	2450	2462	2488	rBV	402335	660631	69.85%	9.570%
54	9.251	2510	2512	2516	rVB3	238	169	0.02%	0.002%
55	9.353	2540	2544	2546	rBV2	171	142	0.02%	0.002%
56	9.392	2551	2556	2558	rBV2	198	195	0.02%	0.003%
57	9.427	2562	2567	2570	rBV2	290	276	0.03%	0.004%
58	9.511	2590	2593	2596	rBV	332	258	0.03%	0.004%
59	9.646	2630	2635	2638	rBV	178	170	0.02%	0.002%
60	9.794	2679	2681	2690	rVB	288	239	0.03%	0.003%
61	9.832	2690	2693	2695	rBV2	215	156	0.02%	0.002%
62	10.006	2743	2747	2750	rBV2	214	198	0.02%	0.003%
63	10.148	2787	2791	2793	rVB2	224	162	0.02%	0.002%
64	10.434	2867	2880	2897	rBV	296436	470227	49.72%	6.812%
65	10.607	2928	2934	2940	rBV	544	716	0.08%	0.010%
66	10.656	2944	2949	2952	rBV	210	145	0.02%	0.002%
67	10.910	3025	3028	3033	rVB2	242	243	0.03%	0.004%
68	10.932	3033	3035	3039	rBV2	216	166	0.02%	0.002%
69	10.967	3044	3046	3049	rBV2	261	155	0.02%	0.002%
70	11.064	3073	3076	3077	rBV	202	137	0.01%	0.002%
71	11.128	3093	3096	3099	rBV	202	179	0.02%	0.003%

Data Path : Z:\VOASRV\HPCHEM1\MSVOA U\DATA\VU091818\  
 Data File : VU026850.D  
 Acq On : 18 Sep 2018 10:35  
 Operator : MD/SY  
 Sample : J4896-01 50X  
 Misc : 5.0mL/MSVOA U/WATER  
 ALS Vial : 8 Sample Multiplier: 1

Instrument :  
 MSVOA\_U  
 ClientSampleId :  
 C08N8

## Integration Parameters: LSCINT.P

Integrator: RTE  
 Smoothing : OFF Filtering: 5  
 Sampling : 1 Min Area: 0 % of largest Peak  
 Start Thrs: 0.2 Max Peaks: 100  
 Stop Thrs : 0 Peak Location: TOP

If leading or trailing edge < 100 prefer < Baseline drop else tangent >  
 Peak separation: 5

Method : Z:\VOASRV\HPCHEM1\MSVOA\_U\METHOD\SOMULM091718WMA.M  
 Title : VOC Analysis

72	11.148	3099	3102	3108	rVB2	244	215	0.02%	0.003%
73	11.193	3114	3116	3120	rVB2	312	201	0.02%	0.003%
74	11.250	3131	3134	3141	rBV2	243	251	0.03%	0.004%
75	11.305	3148	3151	3154	rBV	230	139	0.01%	0.002%
76	11.360	3165	3168	3172	rBV2	184	133	0.01%	0.002%
77	11.418	3184	3186	3192	rBV2	225	211	0.02%	0.003%
78	11.485	3195	3207	3228	rBV	347606	534906	56.56%	7.748%
79	11.630	3248	3252	3254	rBV2	272	200	0.02%	0.003%
80	11.749	3286	3289	3294	rVB3	352	308	0.03%	0.004%
81	11.861	3311	3324	3343	rBV	390770	615146	65.04%	8.911%
82	12.164	3415	3418	3422	rVB2	270	245	0.03%	0.004%
83	12.376	3480	3484	3486	rBV	327	241	0.03%	0.003%
84	12.427	3498	3500	3504	rBV2	219	149	0.02%	0.002%
85	12.482	3514	3517	3520	rVB	305	204	0.02%	0.003%
86	12.623	3559	3561	3566	rVB2	358	205	0.02%	0.003%
87	12.964	3665	3667	3670	rBV2	215	154	0.02%	0.002%
88	13.225	3744	3748	3751	rVV3	268	252	0.03%	0.004%
89	13.286	3764	3767	3770	rVB2	357	263	0.03%	0.004%
90	13.340	3782	3784	3787	rVB	289	163	0.02%	0.002%
91	13.356	3787	3789	3792	rVB	334	168	0.02%	0.002%
92	13.379	3793	3796	3800	rBV	287	179	0.02%	0.003%
93	13.434	3809	3813	3815	rBV2	324	243	0.03%	0.004%
94	13.546	3846	3848	3851	rBV	246	136	0.01%	0.002%
95	13.672	3884	3887	3891	rBV	339	268	0.03%	0.004%
96	13.694	3892	3894	3897	rVB2	298	154	0.02%	0.002%
97	13.836	3933	3938	3941	rBV	370	322	0.03%	0.005%
98	13.993	3984	3987	3995	rVB2	380	454	0.05%	0.007%
99	14.112	4020	4024	4029	rBV2	540	592	0.06%	0.009%
100	14.234	4059	4062	4066	rBV	444	356	0.04%	0.005%

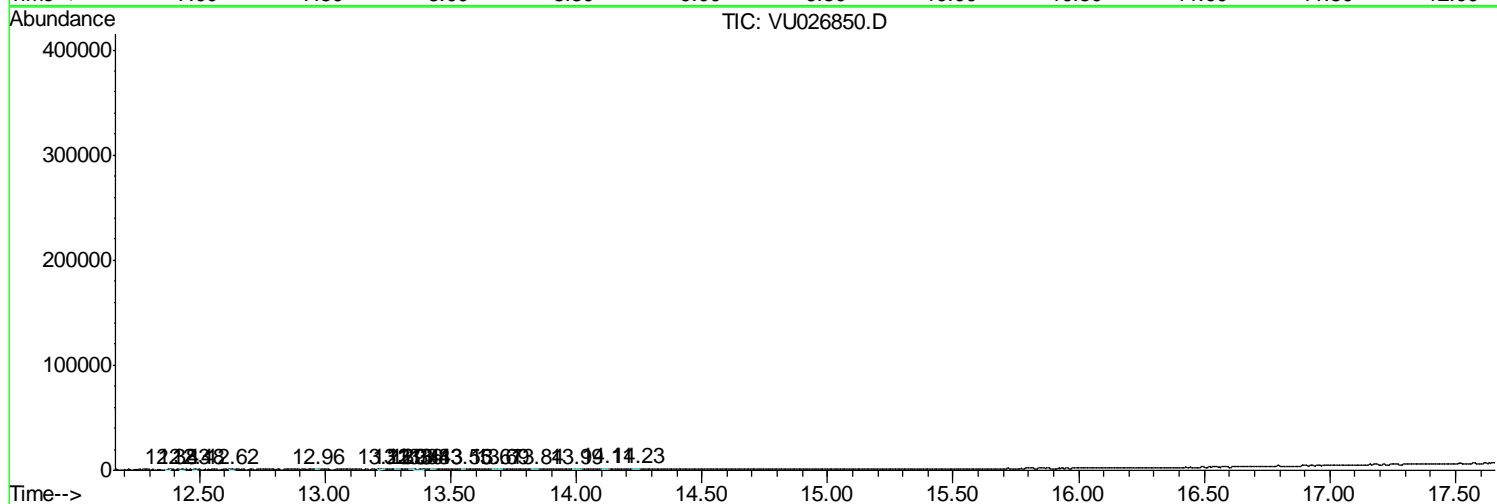
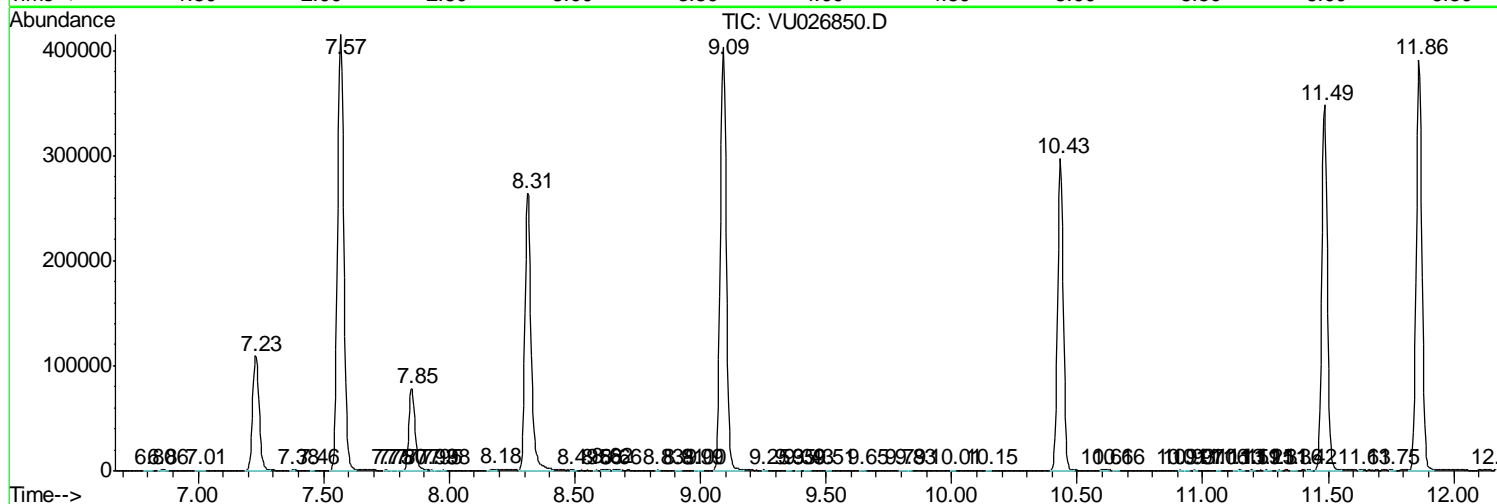
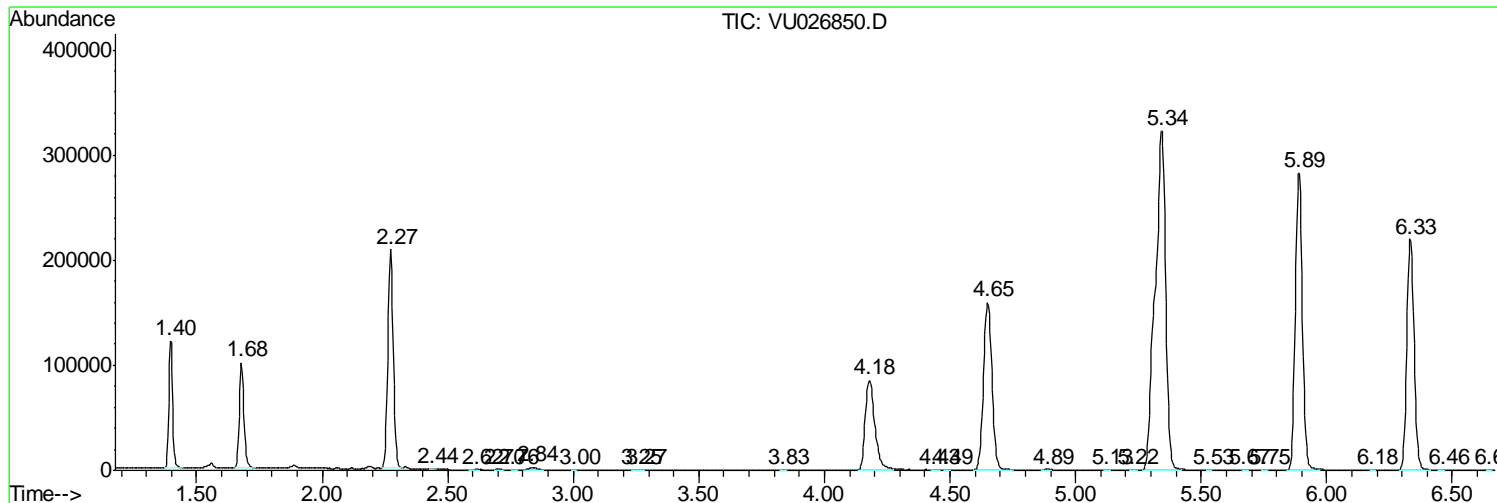
Sum of corrected areas: 6903352

Data Path : Z:\VOASRV\HPCHEM1\MSVOA U\DATA\VU091818\  
 Data File : VU026850.D  
 Acq On : 18 Sep 2018 10:35  
 Operator : MD/SY  
 Sample : J4896-01 50X  
 Misc : 5.0mL/MSVOA U/WATER  
 ALS Vial : 8 Sample Multiplier: 1

**Instrument :**  
 MSVOA\_U  
**Client Sampled :**  
 C08N8

Quant Method : Z:\VOASRV\HPCHEM1\MSVOA\_U\METHOD\SOMULM091718WMA.M  
 Quant Title : VOC Analysis

TIC Library : C:\DATABASE\NIST11.L  
 TIC Integration Parameters: LSCINT.P



Data Path : Z:\VOASRV\HPCHEM1\MSVOA\_U\DATA\VU091818\  
Data File : VU026850.D  
Acq On : 18 Sep 2018 10:35  
Operator : MD/SY  
Sample : J4896-01 50X  
Misc : 5.0mL/MSVOA\_U/WATER  
ALS Vial : 8 Sample Multiplier: 1

Instrument :  
MSVOA\_U  
ClientSampleId :  
C08N8

Quant Method : Z:\VOASRV\HPCHEM1\MSVOA\_U\METHOD\SOMULM091718WMA.M  
Quant Title : VOC Analysis

TIC Library : C:\DATABASE\NIST11.L  
TIC Integration Parameters: LSCINT.P

No Library Search Compounds Detected

\*\*\*\*\*

Data Path : Z:\VOASRV\HPCHEM1\MSVOA\_U\DATA\VU091818\  
Data File : VU026850.D  
Acq On : 18 Sep 2018 10:35  
Operator : MD/SY  
Sample : J4896-01 50X  
Misc : 5.0mL/MSVOA\_U/WATER  
ALS Vial : 8 Sample Multiplier: 1

Instrument :  
MSVOA\_U  
ClientSampleId :  
C08N8

Quant Method : Z:\VOASRV\HPCHEM1\MSVOA\_U\METHOD\SOMULM091718WMA.M  
Quant Title : VOC Analysis

TIC Library : C:\DATABASE\NIST11.L  
TIC Integration Parameters: LSCINT.P

TIC Top Hit name	RT	EstConc	Units	Response	--Internal Standard--			
					#	RT	Resp	Conc

---