

Data File : VU034633.D
 Acq On : 17 Sep 2019 22:54
 Operator : JC/SP
 Sample : K4865-08
 Misc : 25.0mL/MSVOA_U/WATER
 ALS Vial : 18 Sample Multiplier: 1

Instrument :
 MSVOA_U
 ClientSampleId :
 COML5

Quant Time: Sep 18 08:09:27 2019
 Quant Method : Z:\VOASRV\HPCHEM1\MSVOA_U\METHOD\SOMUTR091819WMA.M
 Quant Title : TRACE VOA SOM01.0
 QLast Update : Wed Sep 18 08:05:17 2019
 Response via : Initial Calibration

Internal Standards	R.T.	QIon	Response	Conc	Units	Dev(Min)
1) 1,4-Difluorobenzene	5.86	114	92089	5.00	ug/L	0.00
28) Chlorobenzene-d5	9.07	117	86028	5.00	ug/L	0.00
60) 1,4-Dichlorobenzene-d4	11.46	152	36777	5.00	ug/L	0.00

System Monitoring Compounds

4) Vinyl Chloride-d3	1.39	65	37870	5.17	ug/L	0.00
Spiked Amount	5.000	Range	40 - 130	Recovery	=	103.40%
7) Chloroethane-d5	1.67	69	29918	5.03	ug/L	0.00
Spiked Amount	5.000	Range	65 - 130	Recovery	=	100.60%
11) 1,1-Dichloroethene-d2	2.26	63	52543	4.06	ug/L	0.00
Spiked Amount	5.000	Range	60 - 125	Recovery	=	81.20%
20) 2-Butanone-d5	4.18	46	95926	53.26	ug/L	0.00
Spiked Amount	50.000	Range	40 - 130	Recovery	=	106.52%
24) Chloroform-d	4.62	84	59092	5.29	ug/L	0.00
Spiked Amount	5.000	Range	70 - 125	Recovery	=	105.80%
26) 1,2-Dichloroethane-d4	5.29	65	33971	5.34	ug/L	0.00
Spiked Amount	5.000	Range	70 - 130	Recovery	=	106.80%
32) Benzene-d6	5.31	84	119528	5.22	ug/L	0.00
Spiked Amount	5.000	Range	70 - 125	Recovery	=	104.40%
36) 1,2-Dichloropropane-d6	6.31	67	40857	5.29	ug/L	0.00
Spiked Amount	5.000	Range	60 - 140	Recovery	=	105.80%
41) Toluene-d8	7.54	98	110811	5.12	ug/L	0.00
Spiked Amount	5.000	Range	70 - 130	Recovery	=	102.40%
43) trans-1,3-Dichloropropene-	7.83	79	15041	4.81	ug/L	0.00
Spiked Amount	5.000	Range	55 - 130	Recovery	=	96.20%
46) 2-Hexanone-d5	8.30	63	76203	54.78	ug/L	0.00
Spiked Amount	50.000	Range	45 - 130	Recovery	=	109.56%
57) 1,1,2,2-Tetrachloroethane-	10.41	84	30776	5.13	ug/L	0.00
Spiked Amount	5.000	Range	65 - 120	Recovery	=	102.60%
64) 1,2-Dichlorobenzene-d4	11.84	152	32639	5.15	ug/L	0.00
Spiked Amount	5.000	Range	80 - 120	Recovery	=	103.00%

Target Compounds

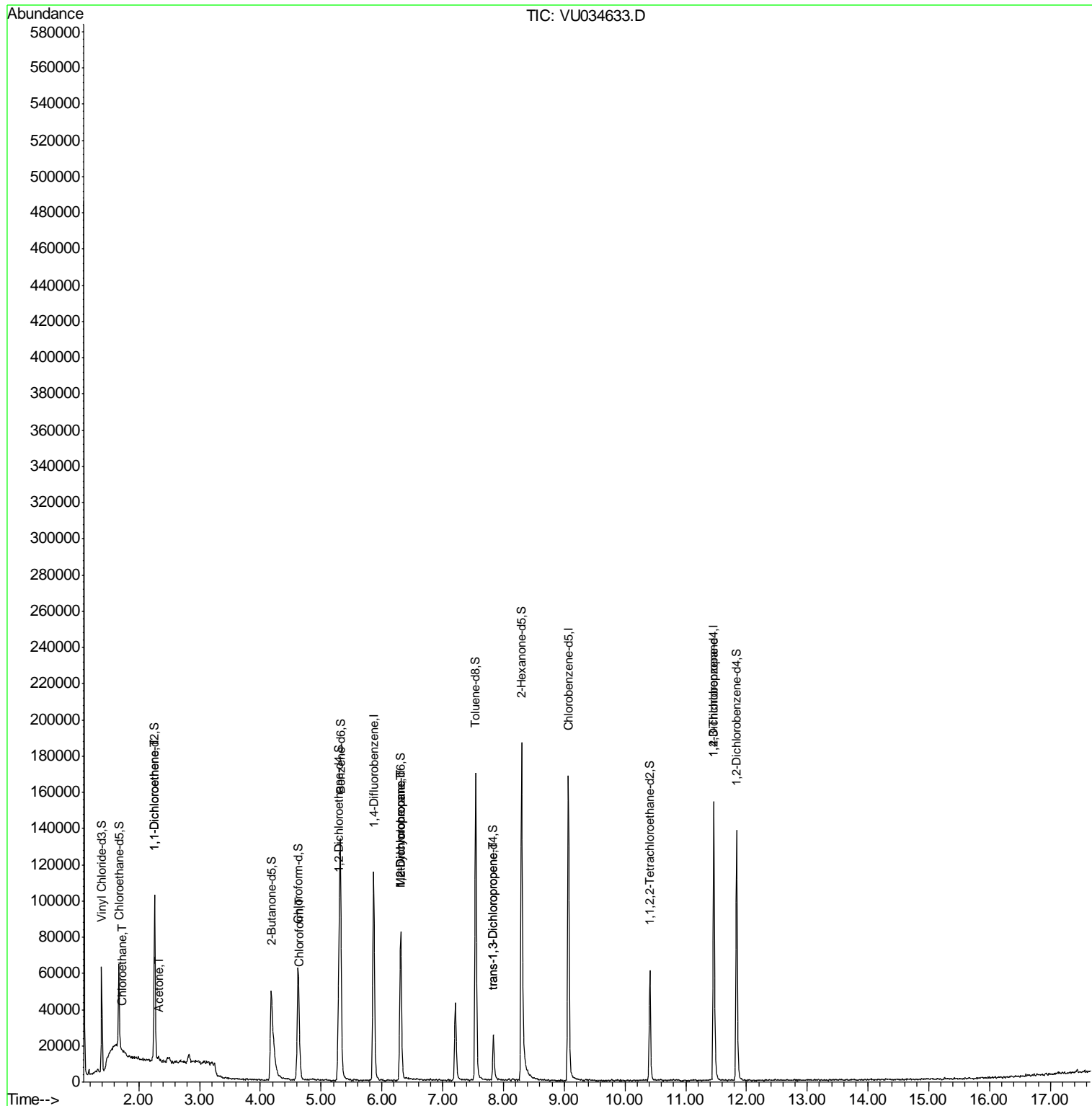
						Qvalue
8) Chloroethane	1.73	64	894	0.223	ug/L #	51
12) 1,1-Dichloroethene	2.27	96	622	0.137	ug/L #	1
13) Acetone	2.32	43	2297	1.651	ug/L	92
25) Chloroform	4.65	83	3621	0.281	ug/L	98
35) Methylcyclohexane	6.31	83	8592	0.917	ug/L #	17
37) 1,2-Dichloropropane	6.31	63	4824	0.672	ug/L #	92
44) trans-1,3-Dichloropropene	7.83	75	697	0.085	ug/L	88
59) 1,2,3-Trichloropropane	11.46	75	6740	1.437	ug/L	98

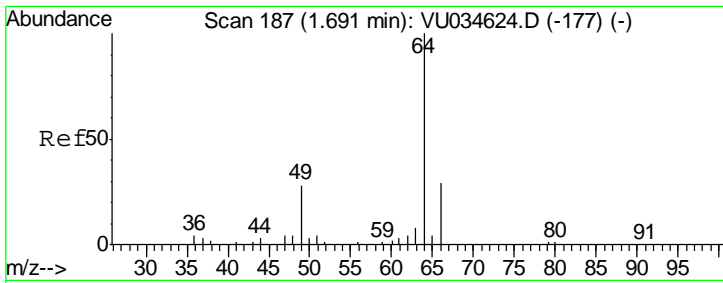
(#) = qualifier out of range (m) = manual integration (+) = signals summed

Data File : VU034633.D
Acq On : 17 Sep 2019 22:54
Operator : JC/SP
Sample : K4865-08
Misc : 25.0mL/MSVOA_U/WATER
ALS Vial : 18 Sample Multiplier: 1

Instrument :
MSVOA_U
ClientSampleId :
COML5

Quant Time: Sep 18 08:09:27 2019
Quant Method : Z:\VOASRV\HPCHEM1\MSVOA_U\METHOD\SOMUTR091819WMA.M
Quant Title : TRACE VOA SOM01.0
QLast Update : Wed Sep 18 08:05:17 2019
Response via : Initial Calibration

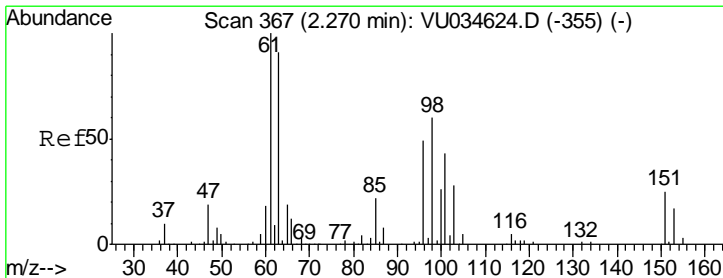
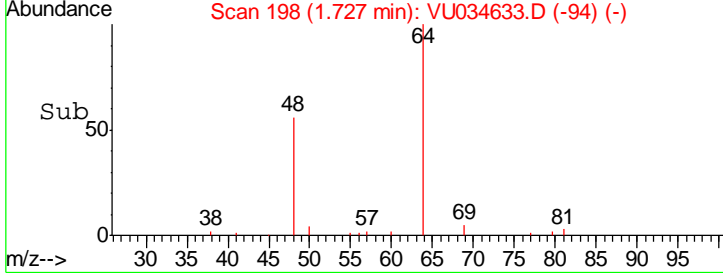
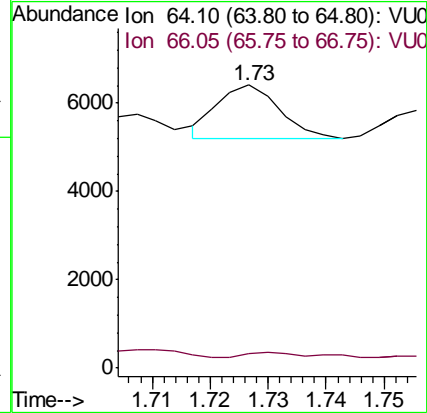
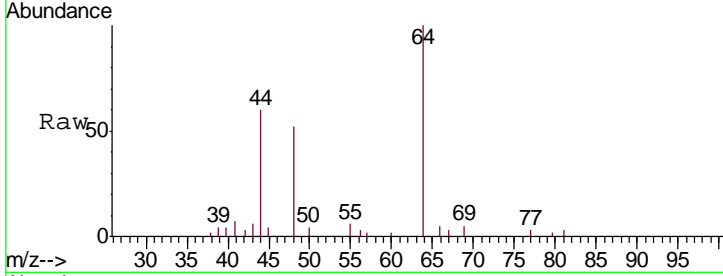




#8
 Chloroethane
 Concen: 0.223 ug/L
 RT: 1.73 min Scan# 198
 Delta R.T. 0.04 min
 Lab File: VU034633.D
 Acq: 17 Sep 2019 22:54

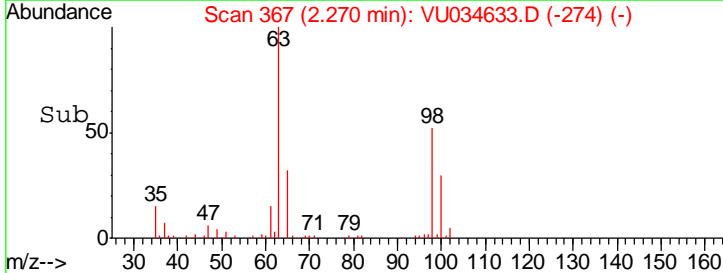
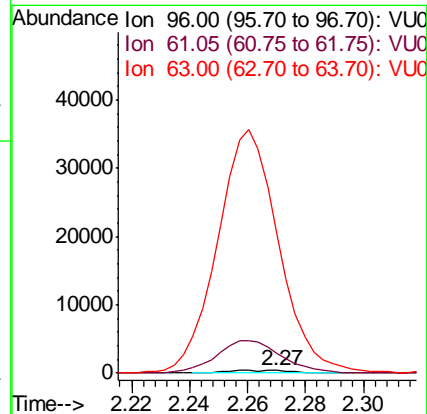
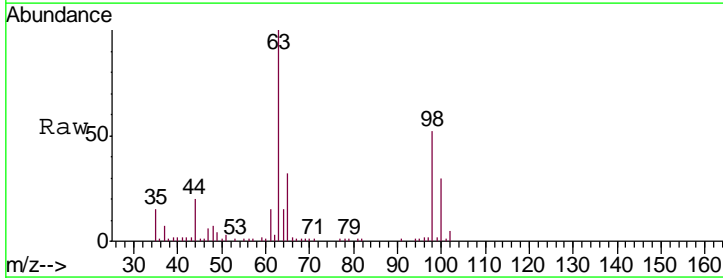
Instrument :
 MSVOA_U
 ClientSampled :
 COML5

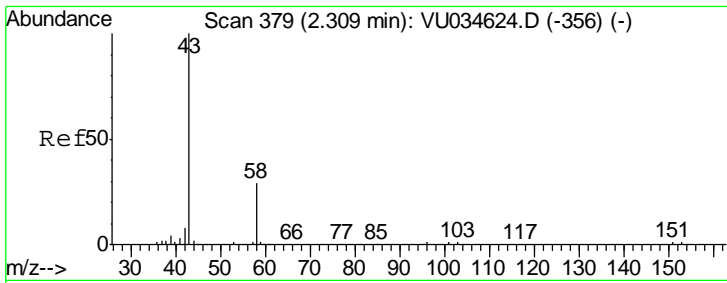
Tgt Ion: 64 Resp: 894
 Ion Ratio Lower Upper
 64 100
 66 5.1 22.6 42.0#



#12
 1,1-Dichloroethene
 Concen: 0.137 ug/L
 RT: 2.27 min Scan# 367
 Delta R.T. -0.00 min
 Lab File: VU034633.D
 Acq: 17 Sep 2019 22:54

Tgt Ion: 96 Resp: 622
 Ion Ratio Lower Upper
 96 100
 61 773.3 144.4 268.2#
 63 5308.9 111.5 207.1#



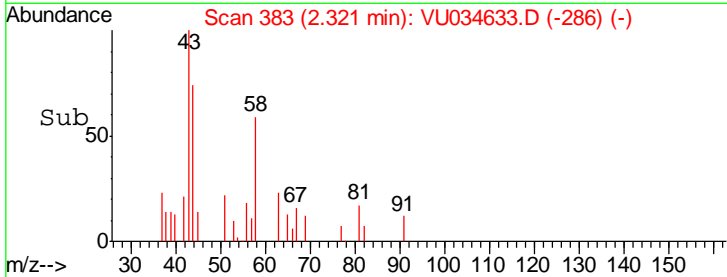
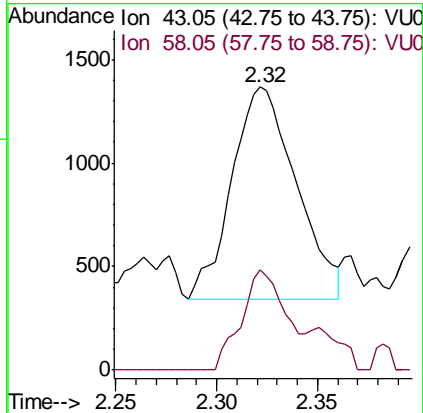
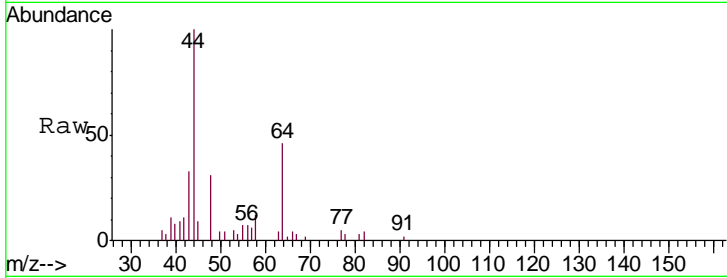


#13
 Acetone
 Concen: 1.651 ug/L
 RT: 2.32 min Scan# 383
 Delta R.T. 0.01 min
 Lab File: VU034633.D
 Acq: 17 Sep 2019 22:54

Instrument :
 MSVOA_U
ClientSampled :
 COML5

Tgt Ion: 43 Resp: 2297

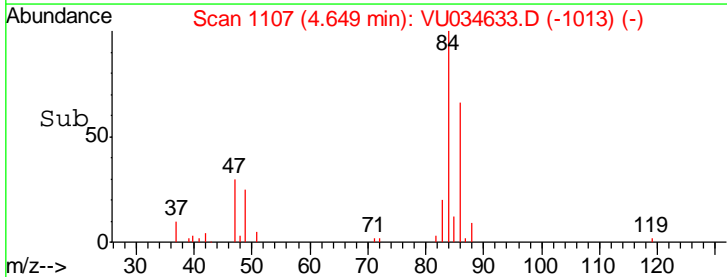
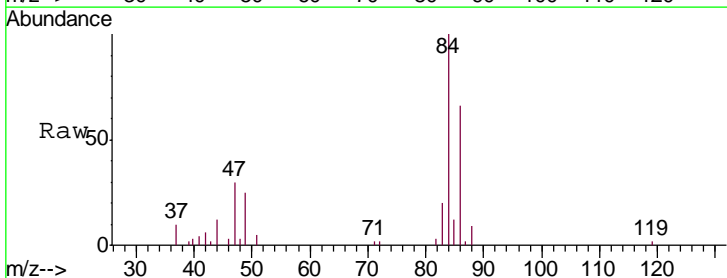
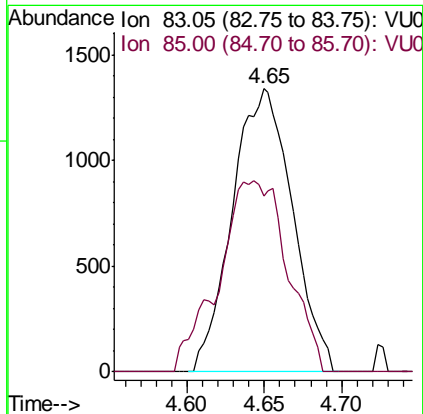
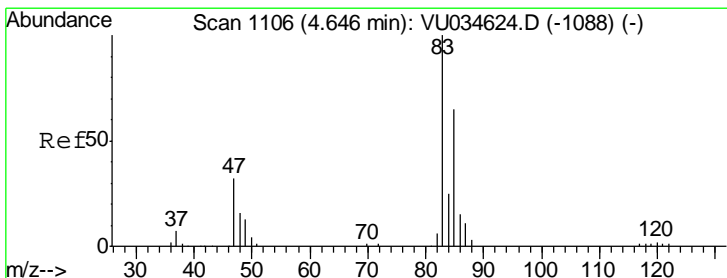
Ion	Ratio	Lower	Upper
43	100		
58	33.0	0.0	57.8

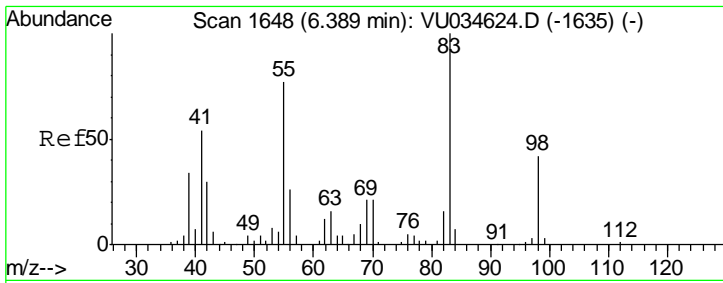


#25
 Chloroform
 Concen: 0.281 ug/L
 RT: 4.65 min Scan# 1107
 Delta R.T. 0.00 min
 Lab File: VU034633.D
 Acq: 17 Sep 2019 22:54

Tgt Ion: 83 Resp: 3621

Ion	Ratio	Lower	Upper
83	100		
85	62.3	42.8	79.4

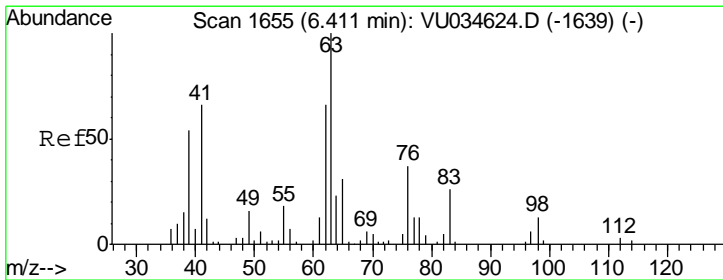
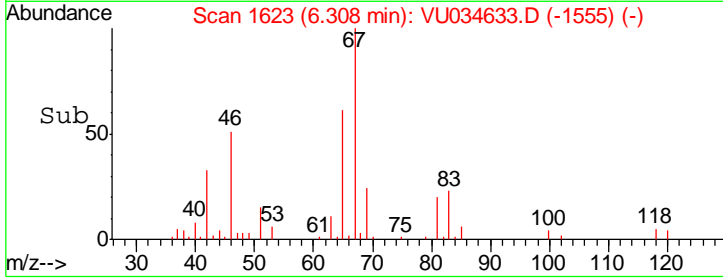
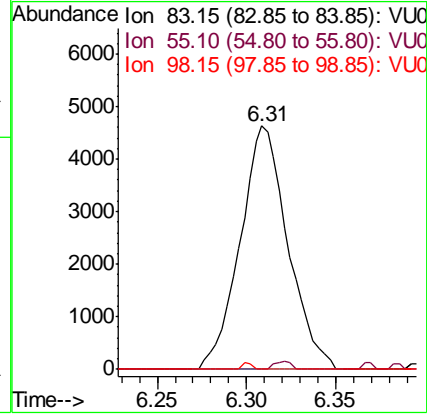
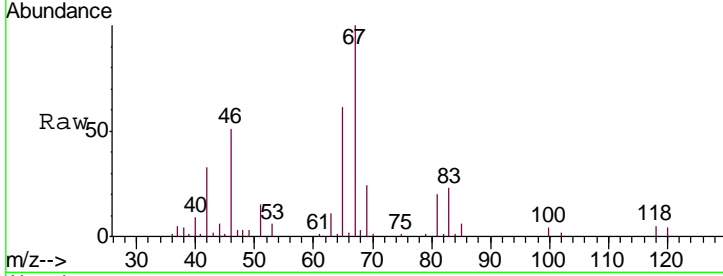




#35
 Methylcyclohexane
 Concen: 0.917 ug/L
 RT: 6.31 min Scan# 1623
 Delta R.T. -0.08 min
 Lab File: VU034633.D
 Acq: 17 Sep 2019 22:54

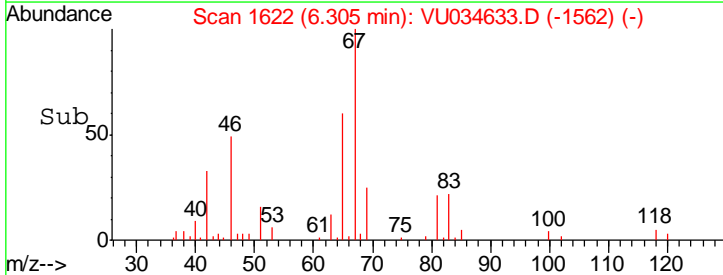
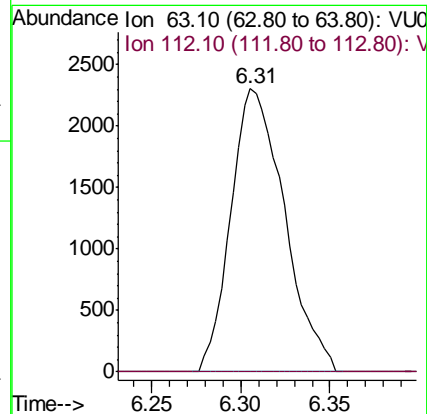
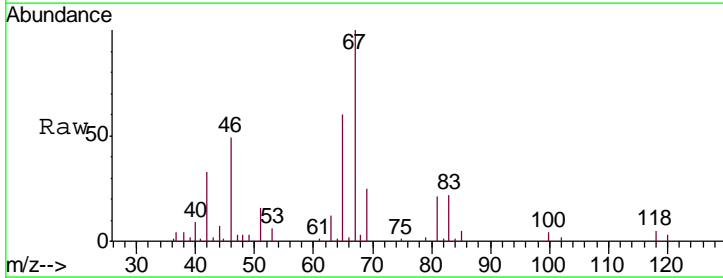
Instrument :
 MSVOA_U
 ClientSampled :
 COML5

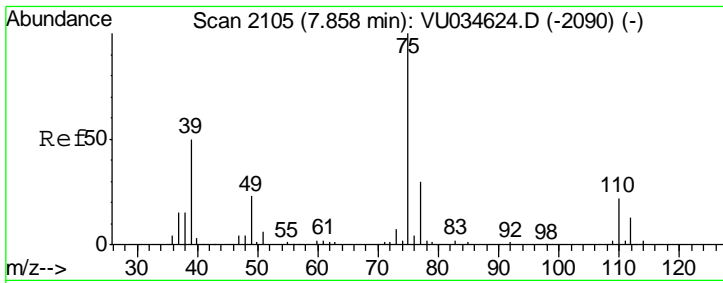
Tgt Ion	Resp	Lower	Upper
83	100		
55	1.1	66.8	100.2#
98	0.5	35.4	53.0#



#37
 1,2-Dichloropropane
 Concen: 0.672 ug/L
 RT: 6.31 min Scan# 1622
 Delta R.T. -0.11 min
 Lab File: VU034633.D
 Acq: 17 Sep 2019 22:54

Tgt Ion	Resp	Lower	Upper
63	100		
112	0.0	2.2	3.2#

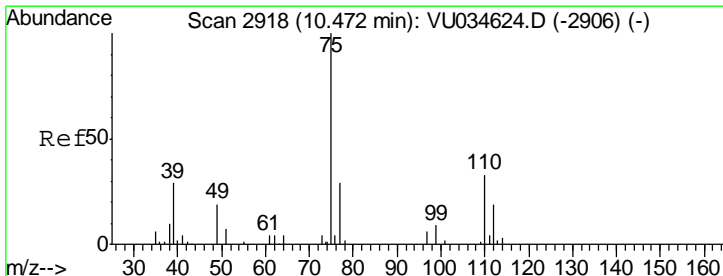
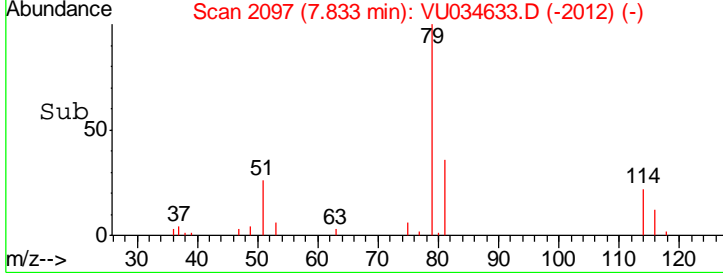
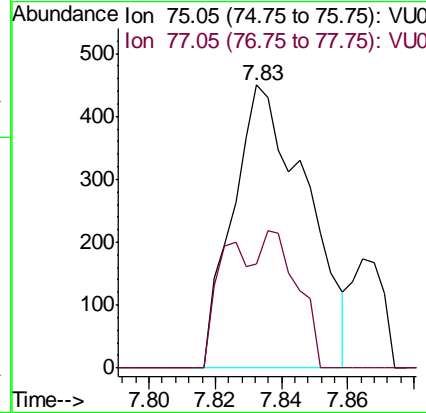
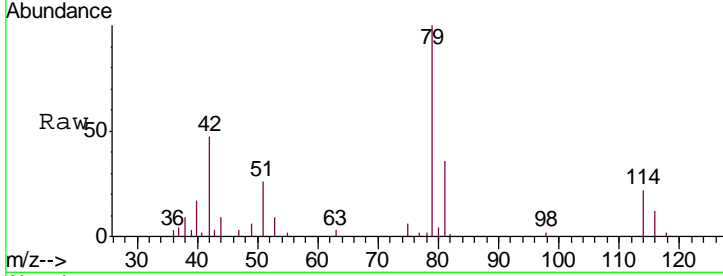




#44
 trans-1,3-Dichloropropene
 Concen: 0.085 ug/L
 RT: 7.83 min Scan# 2097
 Delta R.T. -0.03 min
 Lab File: VU034633.D
 Acq: 17 Sep 2019 22:54

Instrument :
 MSVOA_U
ClientSampled :
 COML5

Tgt Ion: 75 Resp: 697
 Ion Ratio Lower Upper
 75 100
 77 36.7 21.1 39.3



#59
 1,2,3-Trichloropropane
 Concen: 1.437 ug/L
 RT: 11.46 min Scan# 3225
 Delta R.T. 0.99 min
 Lab File: VU034633.D
 Acq: 17 Sep 2019 22:54

Tgt Ion: 75 Resp: 6740
 Ion Ratio Lower Upper
 75 100
 77 33.5 26.0 39.0

