

Data Path : Z:\VOASRV\HPCHEM1\MSVOA U\DATA\VU091819\
 Data File : VU034625.D
 Acq On : 17 Sep 2019 19:39
 Operator : JC/SP
 Sample : VU0918WBL01
 Misc : 25.0mL/MSVOA U/WATER
 ALS Vial : 10 Sample Multiplier: 1

Instrument :
 MSVOA_U
 ClientSampled :
 VBLK09

Integration Parameters: rteint.p
 Integrator: RTE
 Smoothing : ON Filtering: 5
 Sampling : 1 Min Area: 3 % of largest Peak
 Start Thrs: 0.1 Max Peaks: 100
 Stop Thrs : 0 Peak Location: TOP

If leading or trailing edge < 100 prefer < Baseline drop else tangent >
 Peak separation: 5

Method : Z:\VOASRV\HPCHEM1\MSVOA_U\METHOD\SOMUTR091819WMA.M
 Title : TRACE VOA SOM01.0

Signal : TIC

| peak # | R.T. min | first scan | max scan | last scan | PK TY | peak height | corr. area | corr. % max. | % of total |
|--------|----------|------------|----------|-----------|-------|-------------|------------|--------------|------------|
| 1 | 1.389 | 87 | 93 | 107 | rVB | 59614 | 66429 | 16.01% | 1.925% |
| 2 | 1.672 | 173 | 181 | 192 | rBV | 47762 | 60296 | 14.53% | 1.747% |
| 3 | 2.261 | 354 | 364 | 379 | rBV | 96335 | 151656 | 36.56% | 4.394% |
| 4 | 4.174 | 946 | 959 | 1006 | rBV2 | 56124 | 213340 | 51.43% | 6.181% |
| 5 | 4.624 | 1083 | 1099 | 1124 | rBV2 | 60893 | 162335 | 39.13% | 4.704% |
| 6 | 5.315 | 1291 | 1314 | 1335 | rBV3 | 142553 | 392670 | 94.65% | 11.377% |
| 7 | 5.865 | 1473 | 1485 | 1503 | rBV | 130375 | 259592 | 62.58% | 7.522% |
| 8 | 6.309 | 1603 | 1623 | 1640 | rBV2 | 94227 | 192093 | 46.30% | 5.566% |
| 9 | 7.209 | 1891 | 1903 | 1918 | rBV2 | 47792 | 93394 | 22.51% | 2.706% |
| 10 | 7.453 | 1968 | 1979 | 1988 | rBV4 | 5365 | 11193 | 2.70% | 0.324% |
| 11 | 7.543 | 1994 | 2007 | 2024 | rBV | 188384 | 334302 | 80.58% | 9.686% |
| 12 | 7.836 | 2084 | 2098 | 2117 | rBV3 | 28013 | 57986 | 13.98% | 1.680% |
| 13 | 8.296 | 2230 | 2241 | 2279 | rBV | 202356 | 414845 | 100.00% | 12.020% |
| 14 | 8.614 | 2329 | 2340 | 2357 | rBV5 | 8185 | 17856 | 4.30% | 0.517% |
| 15 | 9.067 | 2470 | 2481 | 2502 | rBV | 187692 | 329682 | 79.47% | 9.552% |
| 16 | 10.411 | 2888 | 2899 | 2913 | rBV2 | 64739 | 108754 | 26.22% | 3.151% |
| 17 | 10.752 | 2997 | 3005 | 3014 | rBV3 | 2477 | 4269 | 1.03% | 0.124% |
| 18 | 11.463 | 3214 | 3226 | 3253 | rBV | 177476 | 312111 | 75.24% | 9.043% |
| 19 | 11.839 | 3331 | 3343 | 3364 | rBV | 154584 | 268506 | 64.72% | 7.780% |

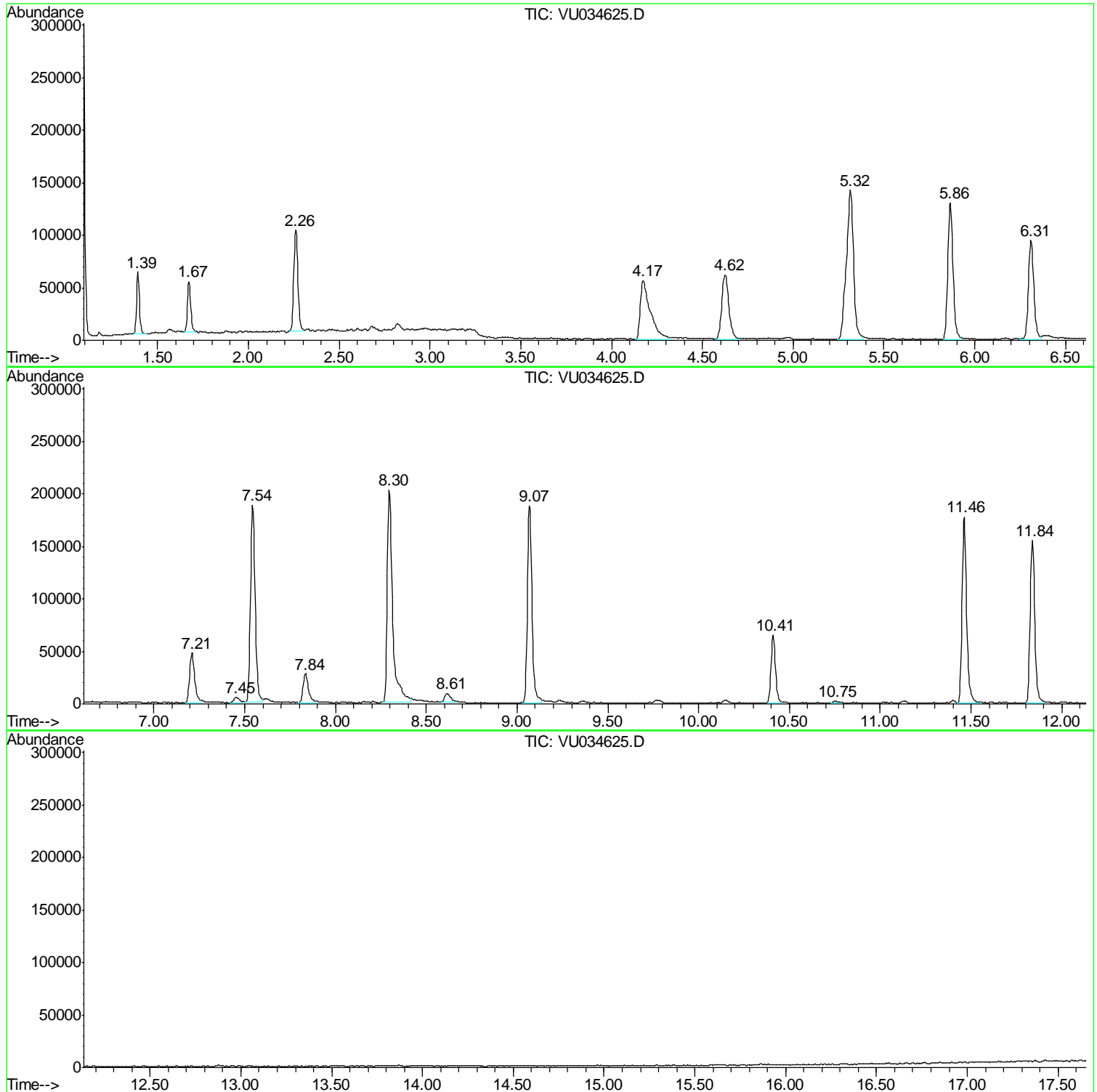
Sum of corrected areas: 3451309

Data Path : Z:\VOASRV\HPCHEM1\MSVOA U\DATA\VU091819\
Data File : VU034625.D
Acq On : 17 Sep 2019 19:39
Operator : JC/SP
Sample : VU0918WBL01
Misc : 25.0mL/MSVOA U/WATER
ALS Vial : 10 Sample Multiplier: 1

Instrument :
MSVOA_U
ClientSampled :
VBLK09

Quant Method : Z:\VOASRV\HPCHEM1\MSVOA_U\METHOD\SOMUTR091819WMA.M
Quant Title : TRACE VOA SOM01.0

TIC Library : C:\DATABASE\NIST11.L
TIC Integration Parameters: LSCINT.P



Data Path : Z:\VOASRV\HPCHEM1\MSVOA_U\DATA\VU091819\
Data File : VU034625.D
Acq On : 17 Sep 2019 19:39
Operator : JC/SP
Sample : VU0918WBL01
Misc : 25.0mL/MSVOA_U/WATER
ALS Vial : 10 Sample Multiplier: 1

Instrument :
MSVOA_U
ClientSampled :
VBLK09

Quant Method : Z:\VOASRV\HPCHEM1\MSVOA_U\METHOD\SOMUTR091819WMA.M
Quant Title : TRACE VOA SOM01.0

TIC Library : C:\DATABASE\NIST11.L
TIC Integration Parameters: LSCINT.P

No Library Search Compounds Detected

Data Path : Z:\VOASRV\HPCHEM1\MSVOA_U\DATA\VU091819\
Data File : VU034625.D
Acq On : 17 Sep 2019 19:39
Operator : JC/SP
Sample : VU0918WBL01
Misc : 25.0mL/MSVOA_U/WATER
ALS Vial : 10 Sample Multiplier: 1

Instrument :
MSVOA_U
ClientSampleId :
VBLK09

Quant Method : Z:\VOASRV\HPCHEM1\MSVOA_U\METHOD\SOMUTR091819WMA.M
Quant Title : TRACE VOA SOM01.0

TIC Library : C:\DATABASE\NIST11.L
TIC Integration Parameters: LSCINT.P

| TIC Top Hit name | RT | EstConc | Units | Response | --Internal Standard-- | | | |
|------------------|----|---------|-------|----------|-----------------------|----|------|------|
| | | | | | # | RT | Resp | Conc |
