

Data Path : Z:\VOASRV\HPCHEM1\MSVOA U\DATA\VU091820\
 Data File : VU040217.D
 Acq On : 18 Sep 2020 17:35
 Operator : SY/MD
 Sample : L4063-11
 Misc : 25.0mL/MSVOA U/WATER
 ALS Vial : 21 Sample Multiplier: 1

Instrument :
 MSVOA_U
 ClientSampleID :
 VHBLK01

Quant Time: Sep 18 23:24:09 2020
 Quant Method : Z:\VOASRV\HPCHEM1\MSVOA_U\METHOD\SOMUTR083120WMA.M
 Quant Title : TRACE VOA SOM01.0
 QLast Update : Fri Sep 18 23:20:35 2020
 Response via : Initial Calibration

Internal Standards	R.T.	QIon	Response	Conc	Units	Dev(Min)
1) 1,4-Difluorobenzene	6.26	114	111592	5.00	ug/L	0.00
28) Chlorobenzene-d5	9.42	117	111481	5.00	ug/L	0.00
60) 1,4-Dichlorobenzene-d4	11.81	152	45595	5.00	ug/L	0.00

System Monitoring Compounds

4) Vinyl Chloride-d3	1.60	65	27699	4.55	ug/L	0.00
Spiked Amount	5.000	Range	40 - 130	Recovery	=	91.00%
7) Chloroethane-d5	1.92	69	26089	5.14	ug/L	0.00
Spiked Amount	5.000	Range	65 - 130	Recovery	=	102.80%
11) 1,1-Dichloroethene-d2	2.58	63	47821	3.06	ug/L	0.00
Spiked Amount	5.000	Range	60 - 125	Recovery	=	61.20%
20) 2-Butanone-d5	4.65	46	129841	53.28	ug/L	0.00
Spiked Amount	50.000	Range	40 - 130	Recovery	=	106.56%
24) Chloroform-d	5.08	84	64498	4.53	ug/L	0.00
Spiked Amount	5.000	Range	70 - 125	Recovery	=	90.60%
26) 1,2-Dichloroethane-d4	5.72	65	45238	5.15	ug/L	0.00
Spiked Amount	5.000	Range	70 - 130	Recovery	=	103.00%
32) Benzene-d6	5.74	84	123570	4.75	ug/L	0.00
Spiked Amount	5.000	Range	70 - 125	Recovery	=	95.00%
36) 1,2-Dichloropropane-d6	6.70	67	41896	4.88	ug/L	0.00
Spiked Amount	5.000	Range	60 - 140	Recovery	=	97.60%
41) Toluene-d8	7.91	98	94991	4.04	ug/L	0.00
Spiked Amount	5.000	Range	70 - 130	Recovery	=	80.80%
43) trans-1,3-Dichloropropene-	8.19	79	16940	4.30	ug/L	0.00
Spiked Amount	5.000	Range	55 - 130	Recovery	=	86.00%
46) 2-Hexanone-d5	8.64	63	92096	49.33	ug/L	0.00
Spiked Amount	50.000	Range	45 - 130	Recovery	=	98.66%
57) 1,1,2,2-Tetrachloroethane-	10.75	84	39057	5.26	ug/L	0.00
Spiked Amount	5.000	Range	65 - 120	Recovery	=	105.20%
64) 1,2-Dichlorobenzene-d4	12.19	152	40317	5.46	ug/L	0.00
Spiked Amount	5.000	Range	80 - 120	Recovery	=	109.20%

Target Compounds

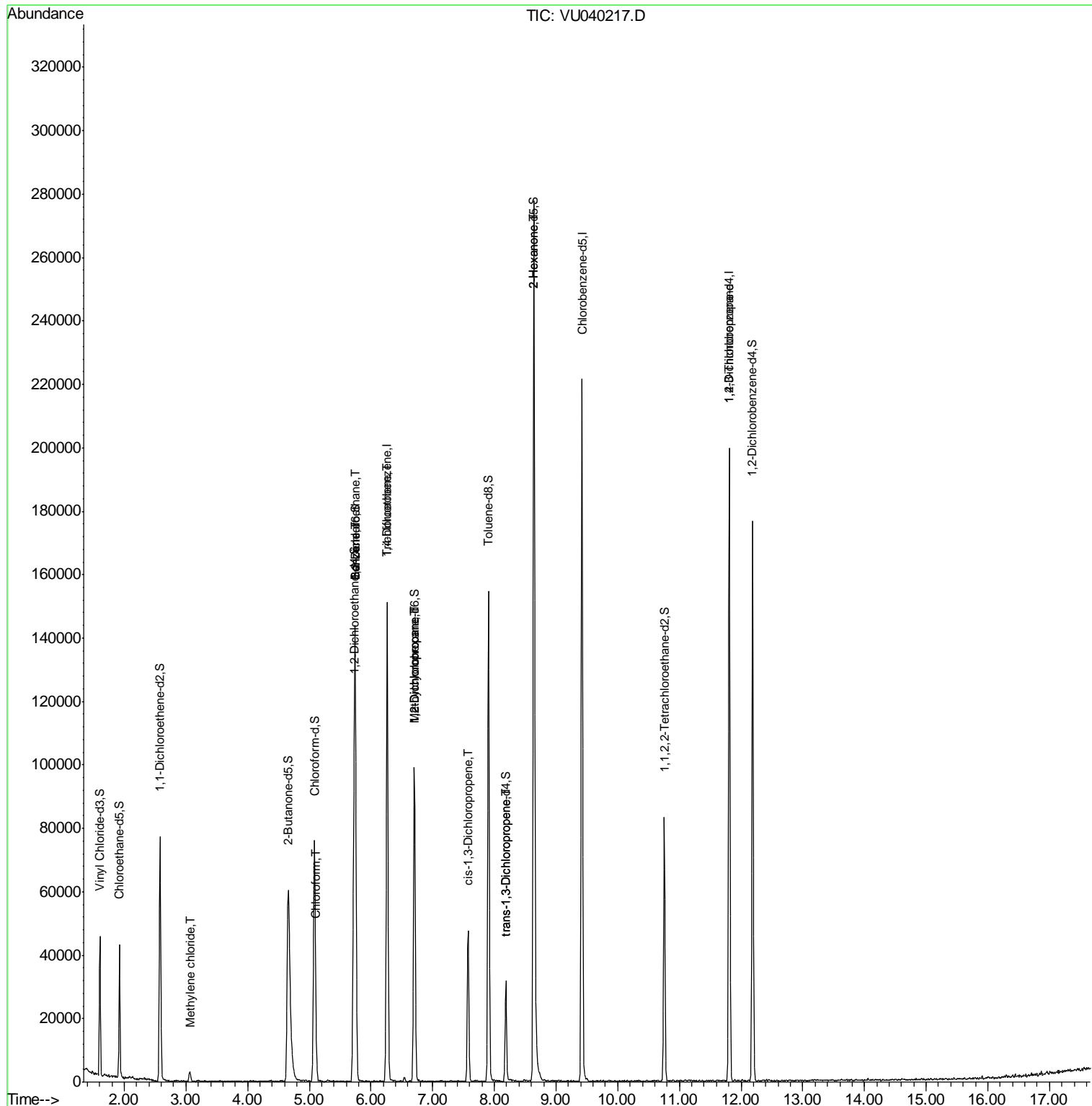
Target Compounds	R.T.	QIon	Response	Conc	Units	Ovalue
16) Methylene chloride	3.06	84	1408	0.124	ug/L	91
25) Chloroform	5.11	83	4856	0.248	ug/L	99
27) 1,2-Dichloroethane	5.75	62	947	0.066	ug/L #	78
33) Benzene	5.74	78	1095	0.027	ug/L	100
34) Trichloroethene	6.27	95	2081	0.195	ug/L #	9
35) Methylcyclohexane	6.70	83	10397	0.635	ug/L #	15
37) 1,2-Dichloropropane	6.70	63	5287	0.490	ug/L #	88
39) cis-1,3-Dichloropropene	7.57	75	1394	0.088	ug/L #	78
44) trans-1,3-Dichloropropene	8.19	75	998	0.068	ug/L #	59
48) 2-Hexanone	8.64	43	14571	2.254	ug/L #	70
59) 1,2,3-Trichloropropane	11.81	75	7174	0.897	ug/L #	88

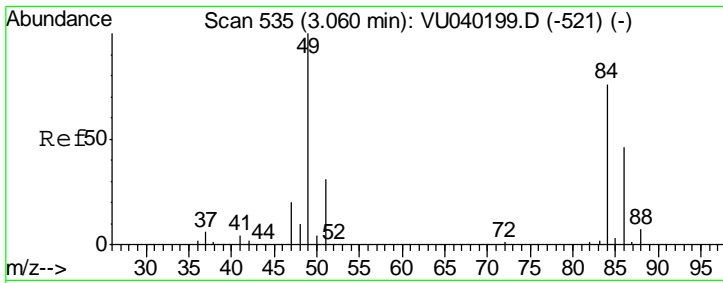
(#) = qualifier out of range (m) = manual integration (+) = signals summed

Data Path : Z:\VOASRV\HPCHEM1\MSVOA U\DATA\VU091820\
 Data File : VU040217.D
 Acq On : 18 Sep 2020 17:35
 Operator : SY/MD
 Sample : L4063-11
 Misc : 25.0mL/MSVOA U/WATER
 ALS Vial : 21 Sample Multiplier: 1

Instrument :
 MSVOA_U
 ClientSampleId :
 VHBLK01

Quant Time: Sep 18 23:24:09 2020
 Quant Method : Z:\VOASRV\HPCHEM1\MSVOA_U\METHOD\SOMUTR083120WMA.M
 Quant Title : TRACE VOA SOM01.0
 QLast Update : Fri Sep 18 23:20:35 2020
 Response via : Initial Calibration

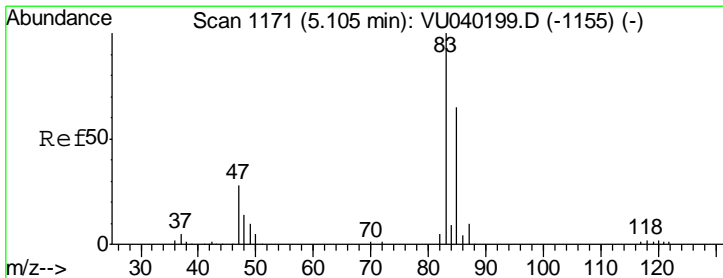
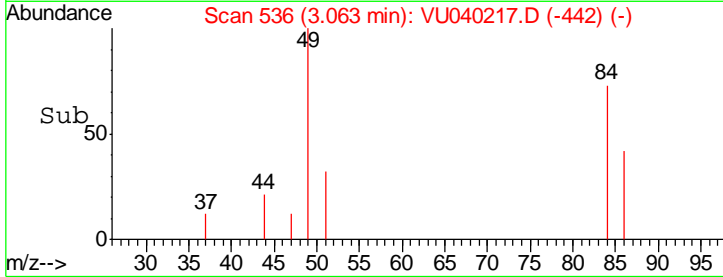
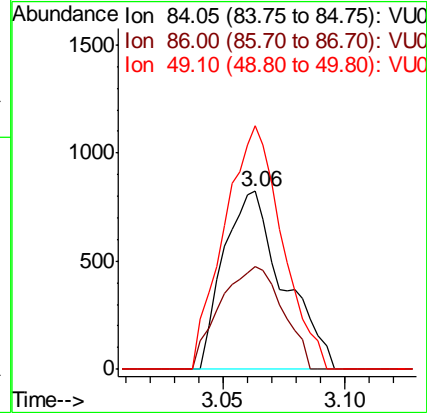
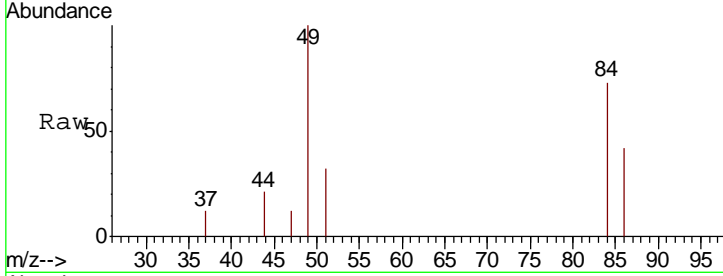




#16
 Methylene chloride
 Concen: 0.124 ug/L
 RT: 3.06 min Scan# 536
 Delta R.T. 0.00 min
 Lab File: VU040217.D
 Acq: 18 Sep 2020 17:35

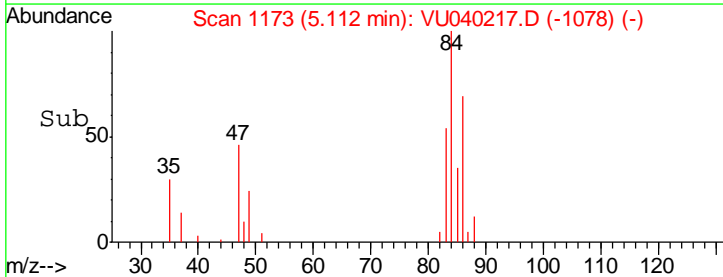
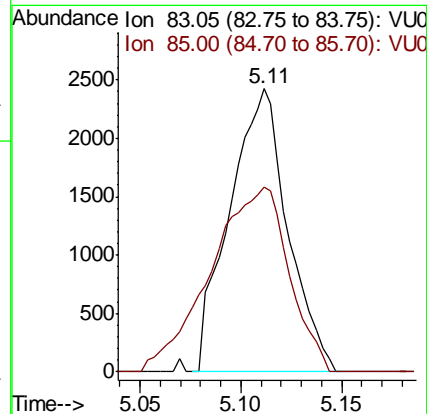
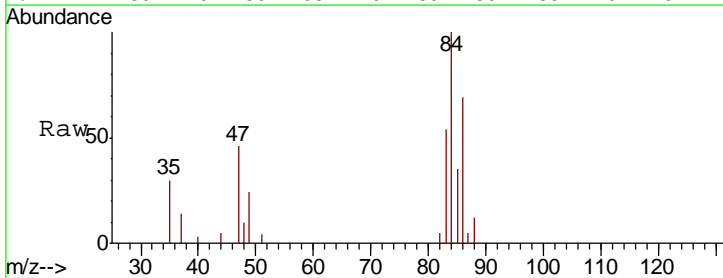
Instrument :
 MSVOA_U
 ClientSampled :
 VHBLK01

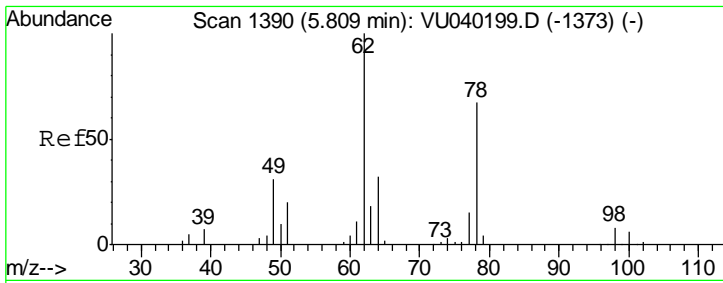
Tgt Ion	Resp	Lower	Upper
84	1408		
86	57.6	45.2	84.0
49	136.8	104.0	193.2



#25
 Chloroform
 Concen: 0.248 ug/L
 RT: 5.11 min Scan# 1173
 Delta R.T. 0.01 min
 Lab File: VU040217.D
 Acq: 18 Sep 2020 17:35

Tgt Ion	Resp	Lower	Upper
83	4856		
85	65.3	45.3	84.1

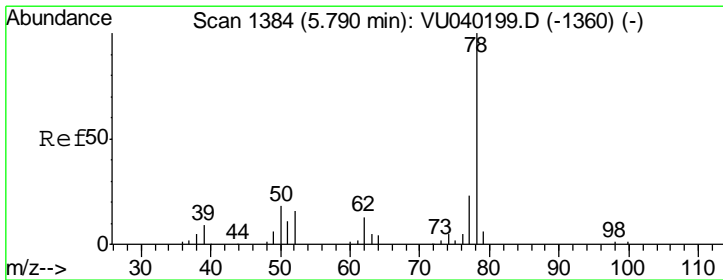
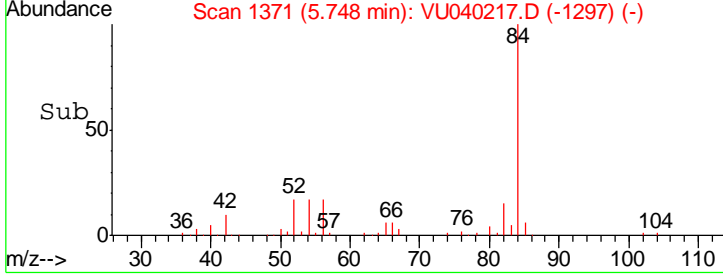
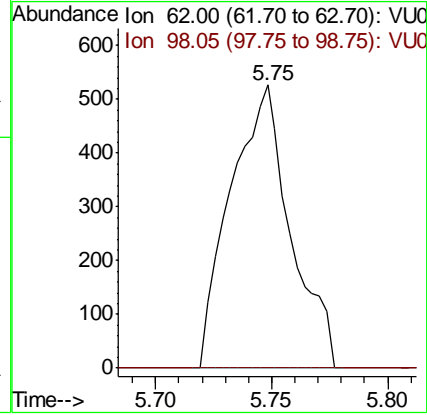
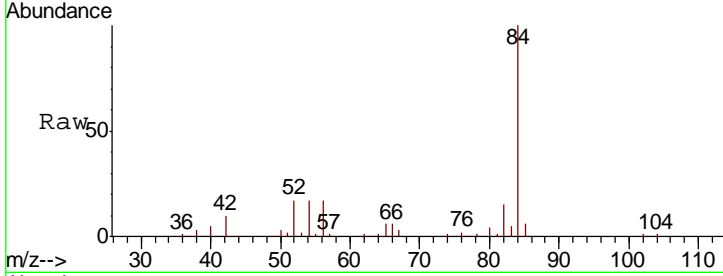




#27
 1,2-Dichloroethane
 Concen: 0.066 ug/L
 RT: 5.75 min Scan# 1371
 Delta R.T. -0.06 min
 Lab File: VU040217.D
 Acq: 18 Sep 2020 17:35

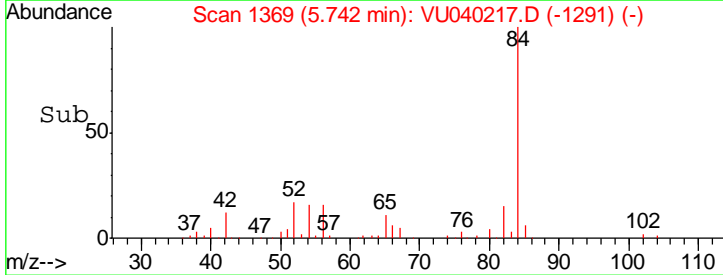
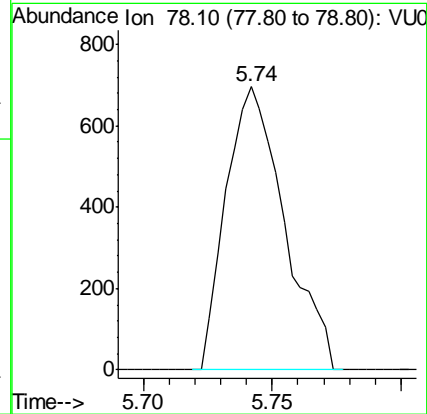
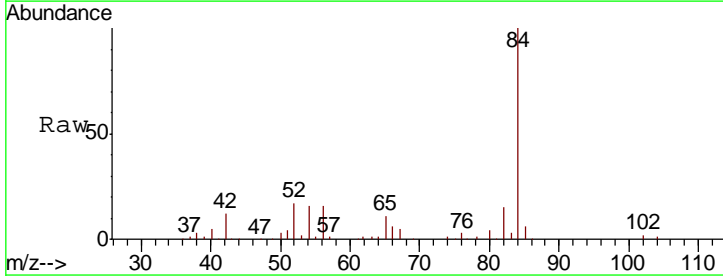
Instrument : MSVOA_U
 ClientSampled : VHBLK01

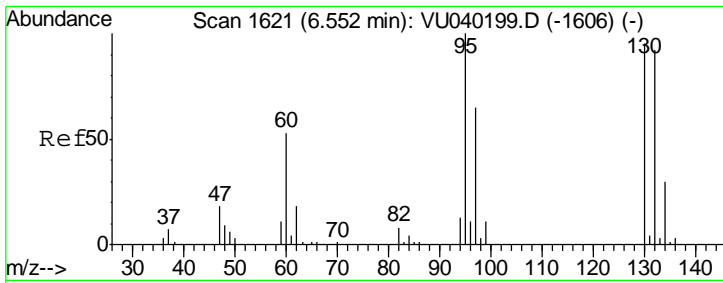
Tgt Ion	Resp	Lower	Upper
62	100		
98	0.0	6.1	9.1#



#33
 Benzene
 Concen: 0.027 ug/L
 RT: 5.74 min Scan# 1369
 Delta R.T. -0.05 min
 Lab File: VU040217.D
 Acq: 18 Sep 2020 17:35

Tgt Ion: 78 Resp: 1095

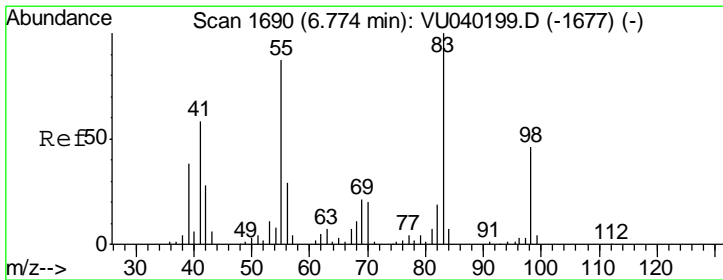
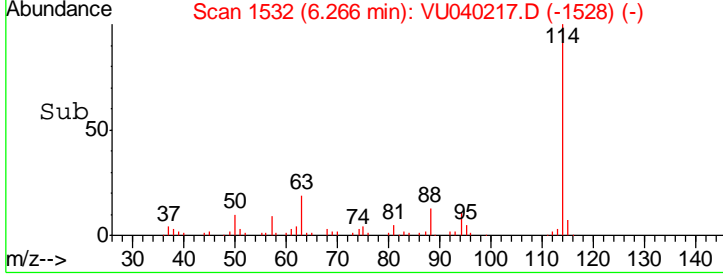
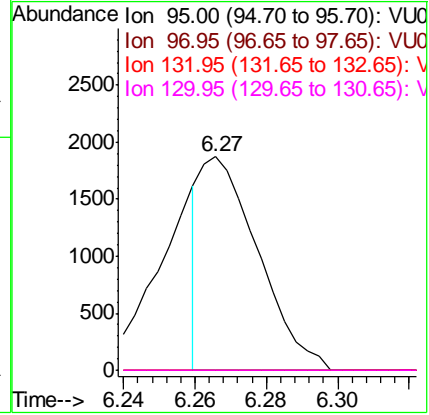
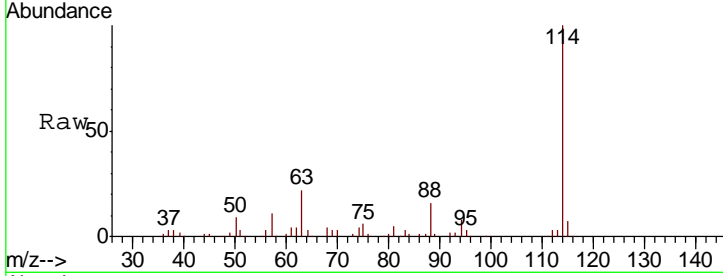




#34
 Trichloroethene
 Concen: 0.195 ug/L
 RT: 6.27 min Scan# 1532
 Delta R.T. -0.29 min
 Lab File: VU040217.D
 Acq: 18 Sep 2020 17:35

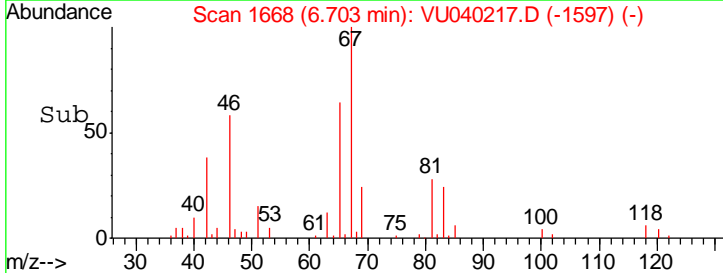
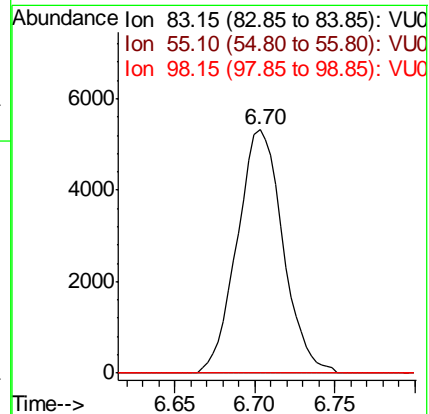
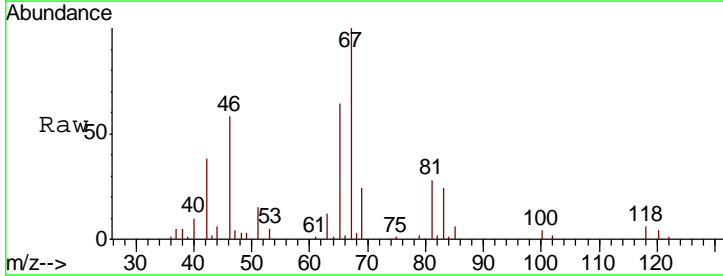
Instrument : MSVOA_U
 ClientSampled : VHBLK01

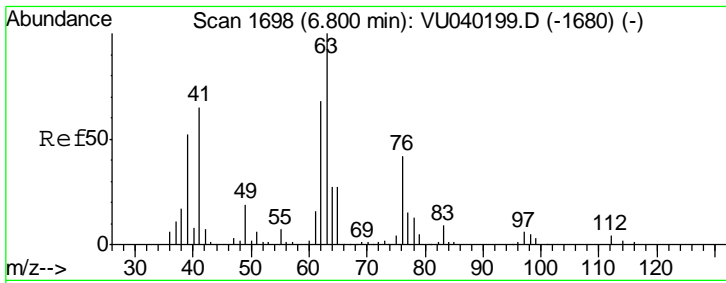
Tgt Ion	Resp	Lower	Upper
95	2081		
97	0.0	43.3	80.5#
132	0.0	59.4	110.4#
130	0.0	64.8	120.4#



#35
 Methylcyclohexane
 Concen: 0.635 ug/L
 RT: 6.70 min Scan# 1668
 Delta R.T. -0.07 min
 Lab File: VU040217.D
 Acq: 18 Sep 2020 17:35

Tgt Ion	Resp	Lower	Upper
83	10397		
55	0.0	70.5	105.7#
98	2.5	37.8	56.6#

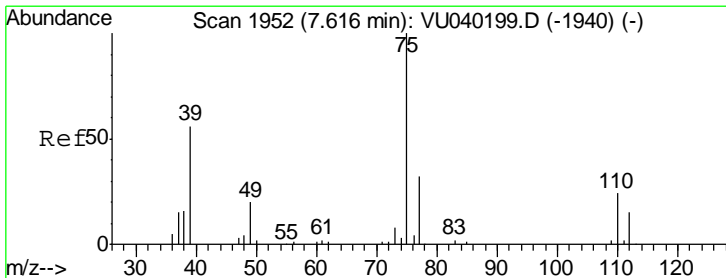
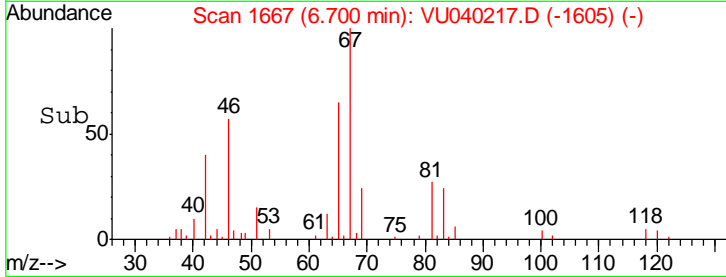
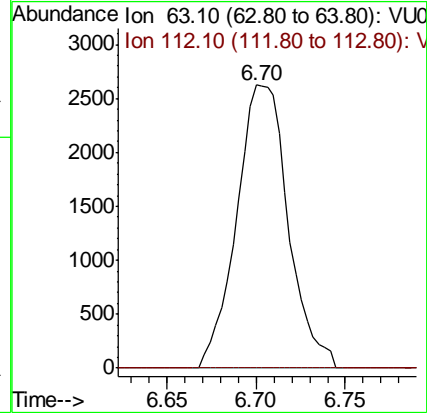
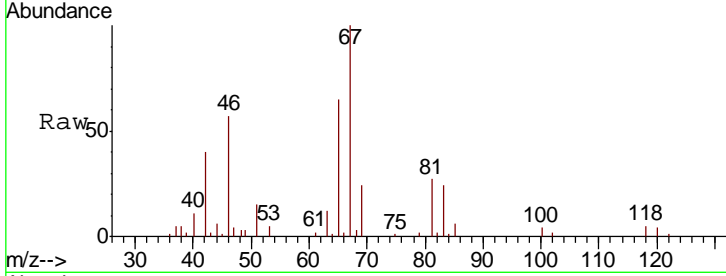




#37
 1,2-Dichloropropane
 Concen: 0.490 ug/L
 RT: 6.70 min Scan# 1667
 Delta R.T. -0.10 min
 Lab File: VU040217.D
 Acq: 18 Sep 2020 17:35

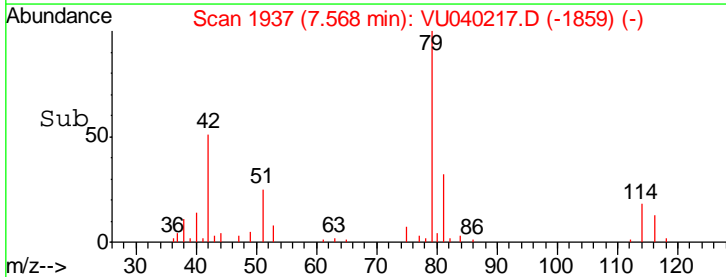
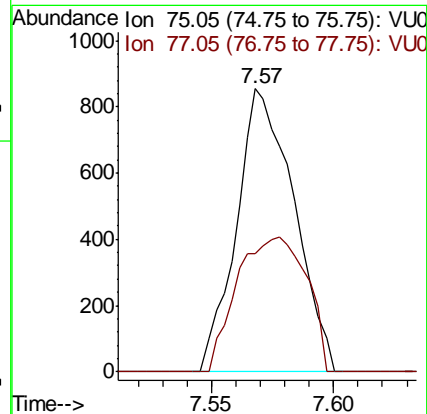
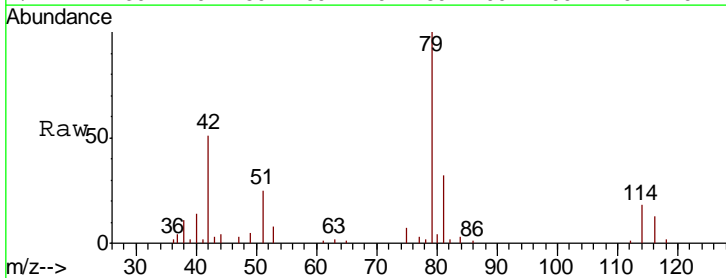
Instrument :
 MSVOA_U
 ClientSampled :
 VHBLK01

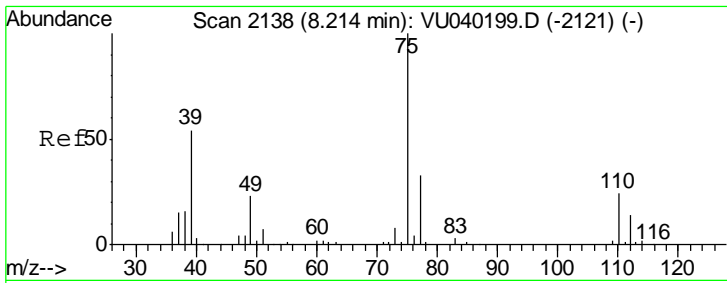
Tgt Ion: 63 Resp: 5287
 Ion Ratio Lower Upper
 63 100
 112 0.0 3.2 4.8#



#39
 cis-1,3-Dichloropropene
 Concen: 0.088 ug/L
 RT: 7.57 min Scan# 1937
 Delta R.T. -0.05 min
 Lab File: VU040217.D
 Acq: 18 Sep 2020 17:35

Tgt Ion: 75 Resp: 1394
 Ion Ratio Lower Upper
 75 100
 77 41.9 21.1 39.3#

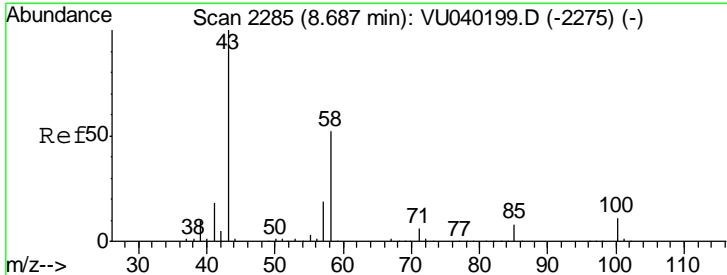
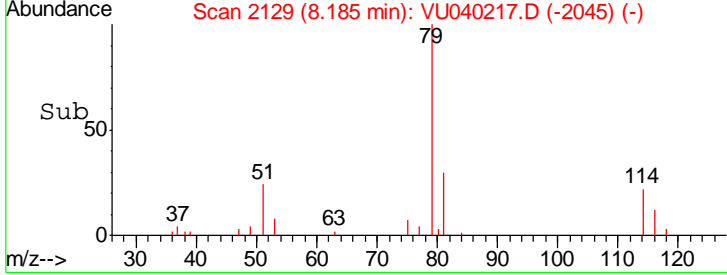
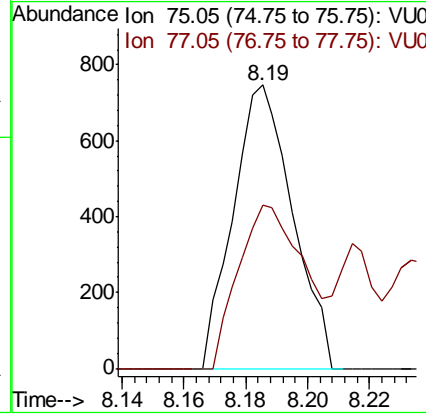
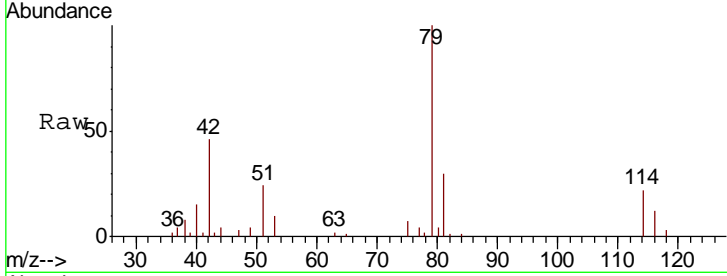




#44
 trans-1,3-Dichloropropene
 Concen: 0.068 ug/L
 RT: 8.19 min Scan# 2129
 Delta R.T. -0.03 min
 Lab File: VU040217.D
 Acq: 18 Sep 2020 17:35

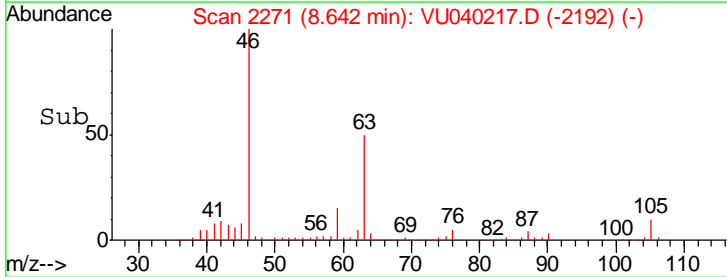
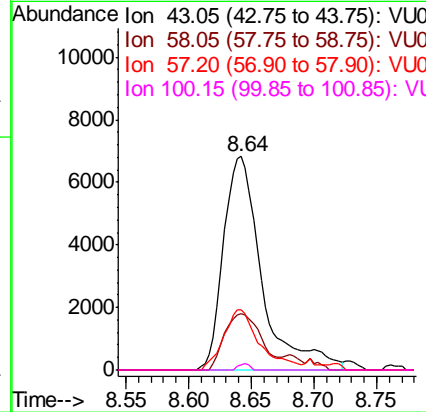
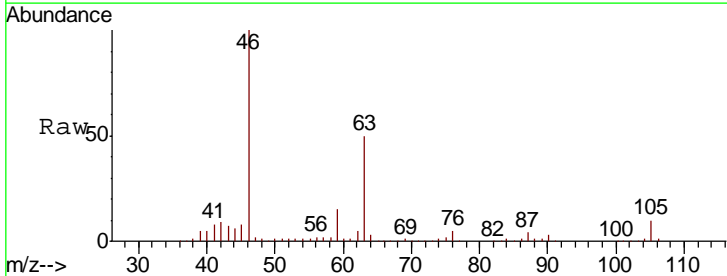
Instrument : MSVOA_U
 ClientSampled : VHBLK01

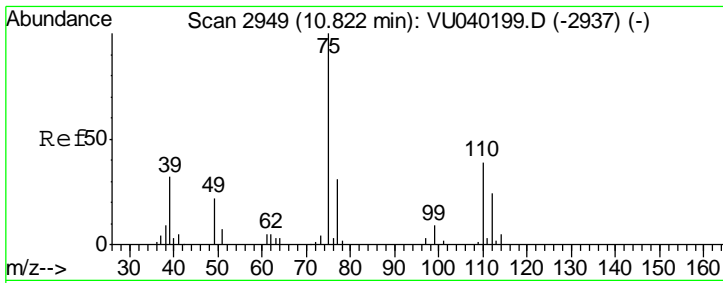
Tgt Ion	Resp	Lower	Upper
75	100		
77	57.7	23.9	44.3#



#48
 2-Hexanone
 Concen: 2.254 ug/L
 RT: 8.64 min Scan# 2271
 Delta R.T. -0.05 min
 Lab File: VU040217.D
 Acq: 18 Sep 2020 17:35

Tgt Ion	Resp	Lower	Upper
43	100		
58	25.3	39.6	59.4#
57	26.5	14.3	21.5#
100	0.9	8.0	12.0#





#59
 1,2,3-Trichloropropane
 Concen: 0.897 ug/L
 RT: 11.81 min Scan# 3256
 Delta R.T. 0.99 min
 Lab File: VU040217.D
 Acq: 18 Sep 2020 17:35

Instrument : MSVOA_U
 ClientSampled : VHBLK01

Tot Ion	Resp	Lower	Upper
75	100		
77	37.6	24.9	37.3#

