

Data Path : Z:\VOASRV\HPCHEM1\MSVOA U\DATA\VU091820\
 Data File : VU040220.D
 Acq On : 18 Sep 2020 18:45
 Operator : SY/MD
 Sample : L4078-03
 Misc : 25.0mL/MSVOA U/WATER
 ALS Vial : 24 Sample Multiplier: 1

Instrument :
 MSVOA_U
ClientSampled :
 C0AK9

Manual Integrations
APPROVED
 MMDadoda
 9/21/2020 1:38:14 PM

Quant Time: Sep 19 01:06:02 2020
 Quant Method : Z:\VOASRV\HPCHEM1\MSVOA_U\METHOD\SOMUTR083120WMA.M
 Quant Title : TRACE VOA SOM01.0
 QLast Update : Fri Sep 18 23:20:35 2020
 Response via : Initial Calibration

Internal Standards	R.T.	QIon	Response	Conc	Units	Dev(Min)
1) 1,4-Difluorobenzene	6.26	114	110744	5.00	ug/L	0.00
28) Chlorobenzene-d5	9.42	117	111998	5.00	ug/L	0.00
60) 1,4-Dichlorobenzene-d4	11.81	152	47545	5.00	ug/L	0.00

System Monitoring Compounds

4) Vinyl Chloride-d3	1.60	65	26271	4.35	ug/L	0.00
Spiked Amount	5.000	Range	40 - 130	Recovery	=	87.00%
7) Chloroethane-d5	1.92	69	25839	5.13	ug/L	0.00
Spiked Amount	5.000	Range	65 - 130	Recovery	=	102.60%
11) 1,1-Dichloroethene-d2	2.58	63	48015	3.09	ug/L	0.00
Spiked Amount	5.000	Range	60 - 125	Recovery	=	61.80%
20) 2-Butanone-d5	4.66	46	130329	53.89	ug/L	0.00
Spiked Amount	50.000	Range	40 - 130	Recovery	=	107.78%
24) Chloroform-d	5.08	84	67312	4.77	ug/L	0.00
Spiked Amount	5.000	Range	70 - 125	Recovery	=	95.40%
26) 1,2-Dichloroethane-d4	5.72	65	44850	5.14	ug/L	0.00
Spiked Amount	5.000	Range	70 - 130	Recovery	=	102.80%
32) Benzene-d6	5.75	84	119621	4.57	ug/L	0.00
Spiked Amount	5.000	Range	70 - 125	Recovery	=	91.40%
36) 1,2-Dichloropropane-d6	6.70	67	41978	4.87	ug/L	0.00
Spiked Amount	5.000	Range	60 - 140	Recovery	=	97.40%
41) Toluene-d8	7.90	98	94331	3.99	ug/L	0.00
Spiked Amount	5.000	Range	70 - 130	Recovery	=	79.80%
43) trans-1,3-Dichloropropene-	8.19	79	16383	4.14	ug/L	0.00
Spiked Amount	5.000	Range	55 - 130	Recovery	=	82.80%
46) 2-Hexanone-d5	8.64	63	90668	48.35	ug/L	0.00
Spiked Amount	50.000	Range	45 - 130	Recovery	=	96.70%
57) 1,1,2,2-Tetrachloroethane-	10.75	84	37531	5.04	ug/L	0.00
Spiked Amount	5.000	Range	65 - 120	Recovery	=	100.80%
64) 1,2-Dichlorobenzene-d4	12.19	152	39926	5.19	ug/L	0.00
Spiked Amount	5.000	Range	80 - 120	Recovery	=	103.80%

Target Compounds					Ovalue
13) Acetone	2.67	43	3322m	1.484	ug/L
42) Toluene	7.97	91	2381	0.058	ug/L

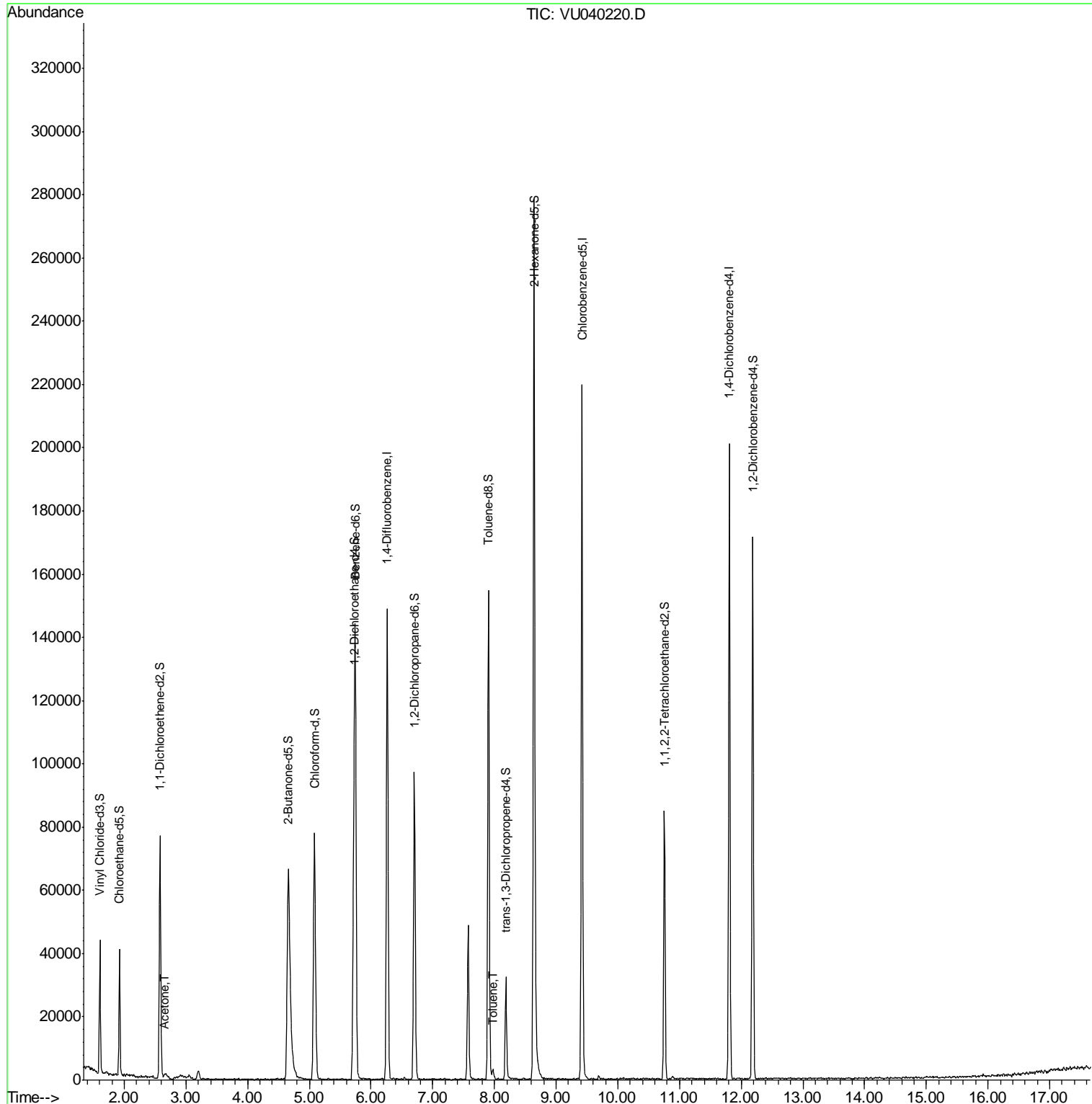
(#) = qualifier out of range (m) = manual integration (+) = signals summed

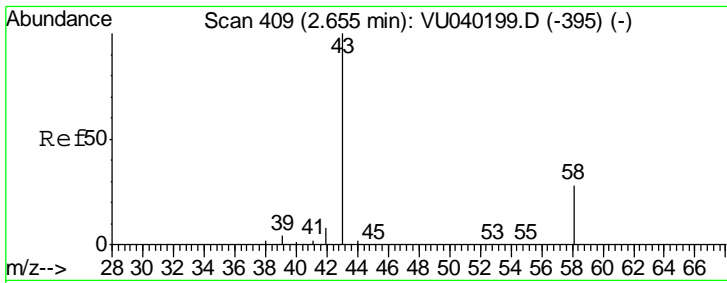
Data Path : Z:\VOASRV\HPCHEM1\MSVOA U\DATA\VU091820\
 Data File : VU040220.D
 Acq On : 18 Sep 2020 18:45
 Operator : SY/MD
 Sample : L4078-03
 Misc : 25.0mL/MSVOA U/WATER
 ALS Vial : 24 Sample Multiplier: 1

Instrument :
 MSVOA_U
Client Sampled :
 C0AK9

Manual Integrations
APPROVED
 MMDadoda
 9/21/2020 1:38:14 PM

Quant Time: Sep 19 01:06:02 2020
 Quant Method : Z:\VOASRV\HPCHEM1\MSVOA_U\METHOD\SOMUTR083120WMA.M
 Quant Title : TRACE VOA SOM01.0
 QLast Update : Fri Sep 18 23:20:35 2020
 Response via : Initial Calibration





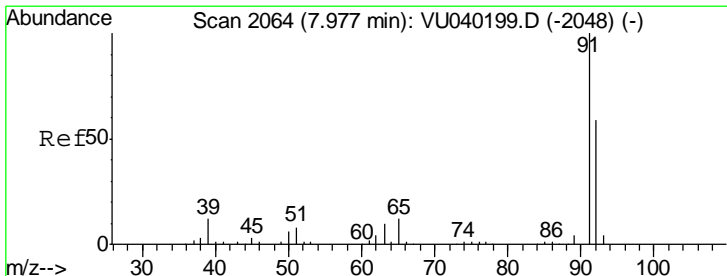
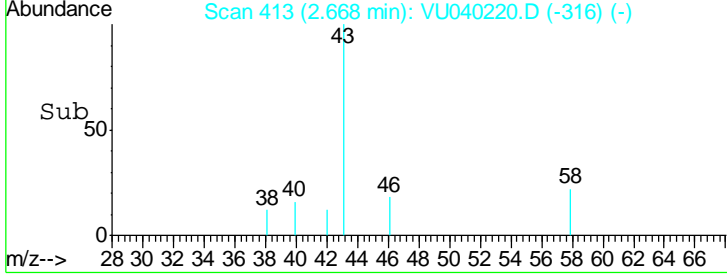
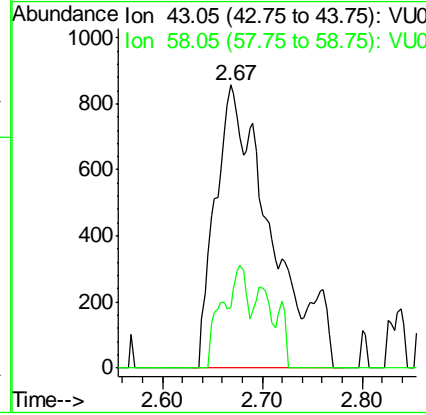
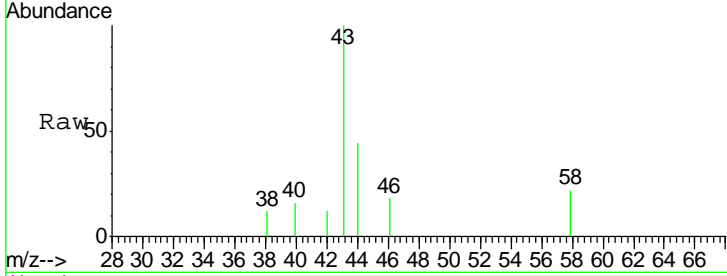
#13
 Acetone
 Concen: 1.484 ug/L m
 RT: 2.67 min Scan# 413
 Delta R.T. 0.01 min
 Lab File: VU040220.D
 Acq: 18 Sep 2020 18:45

Instrument :
 MSVOA_U
 ClientSampled :
 C0AK9

Tgt Ion: 43 Resp: 3322

Ion	Ratio	Lower	Upper
43	100		
58	6.2	0.0	55.4

Manual Integrations
APPROVED
 MMDadoda
 9/21/2020 1:38:14 PM



#42
 Toluene
 Concen: 0.058 ug/L
 RT: 7.97 min Scan# 2062
 Delta R.T. -0.01 min
 Lab File: VU040220.D
 Acq: 18 Sep 2020 18:45

Tgt Ion: 91 Resp: 2381

Ion	Ratio	Lower	Upper
91	100		
92	62.8	40.7	75.5

