

Data Path : Z:\voasrv\HPCHEM1\MSVOA_U\Data\VU091823\
 Data File : VU055383.D
 Acq On : 18 Sep 2023 20:01
 Operator : MD/SY
 Sample : 04380-19DL 100X
 Misc : 25.0mL/MSVOA_U/WATER
 ALS Vial : 22 Sample Multiplier: 1

Instrument :
 MSVOA_U
 ClientSampleId :
 BH4P0DL

Integration Parameters: rteint.p

Integrator: RTE
 Smoothing : ON Filtering: 5
 Sampling : 1 Min Area: 3 % of largest Peak
 Start Thrs: 0.1 Max Peaks: 100
 Stop Thrs : 0 Peak Location: TOP

If leading or trailing edge < 100 prefer < Baseline drop else tangent >
 Peak separation: 5

Method : Z:\voasrv\HPCHEM1\MSVOA_U\Method\SFAMUTR091523WMA.M
 Title : TRACE VOA SFAM1.0

Signal : TIC: VU055383.D\data.ms

peak #	R.T. min	first scan	max scan	last scan	PK TY	peak height	corr. area	corr. % max.	% of total
1	1.596	88	95	111	rVB	67340	77053	8.00%	1.078%
2	1.911	185	193	206	rBV	76185	97989	10.17%	1.371%
3	2.563	385	396	412	rVB	85746	140250	14.56%	1.962%
4	3.039	532	544	562	rVB3	27325	51811	5.38%	0.725%
5	3.181	576	588	601	rBV3	4460	10243	1.06%	0.143%
6	4.653	1026	1046	1078	rBV3	169792	692530	71.88%	9.687%
7	5.059	1155	1172	1196	rBV2	141260	320804	33.30%	4.487%
8	5.721	1357	1378	1406	rBV2	209657	592080	61.45%	8.282%
9	6.245	1525	1541	1560	rBV	298681	582311	60.44%	8.145%
10	6.538	1617	1632	1658	rBV	253342	496279	51.51%	6.942%
11	6.685	1665	1678	1698	rBV	160632	318810	33.09%	4.459%
12	7.563	1940	1951	1966	rBV2	68654	124166	12.89%	1.737%
13	7.894	2038	2054	2072	rBV	195529	342628	35.56%	4.793%
14	8.177	2131	2142	2167	rVB	43366	77380	8.03%	1.082%
15	8.634	2271	2284	2328	rBV4	404643	963463	100.00%	13.477%
16	9.415	2511	2527	2550	rBV	449054	767727	79.68%	10.739%
17	10.753	2928	2943	2962	rBV	165056	268894	27.91%	3.761%
18	11.811	3259	3272	3298	rBV	462399	766008	79.51%	10.715%
19	12.190	3377	3390	3414	rBV	272594	458727	47.61%	6.417%

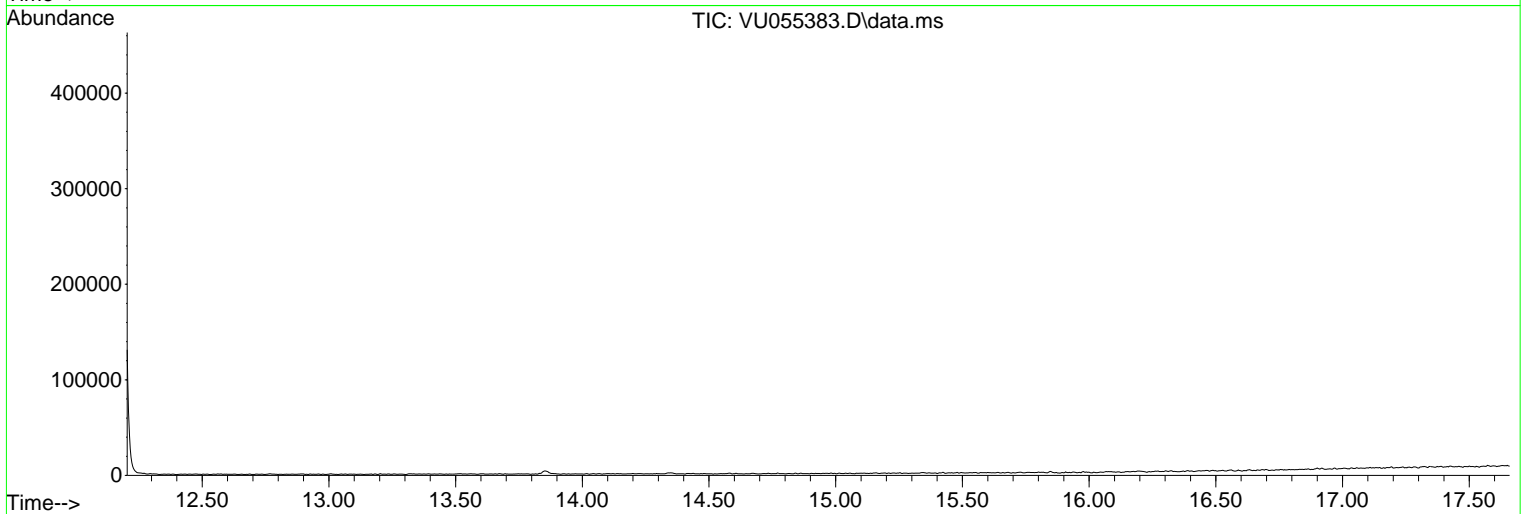
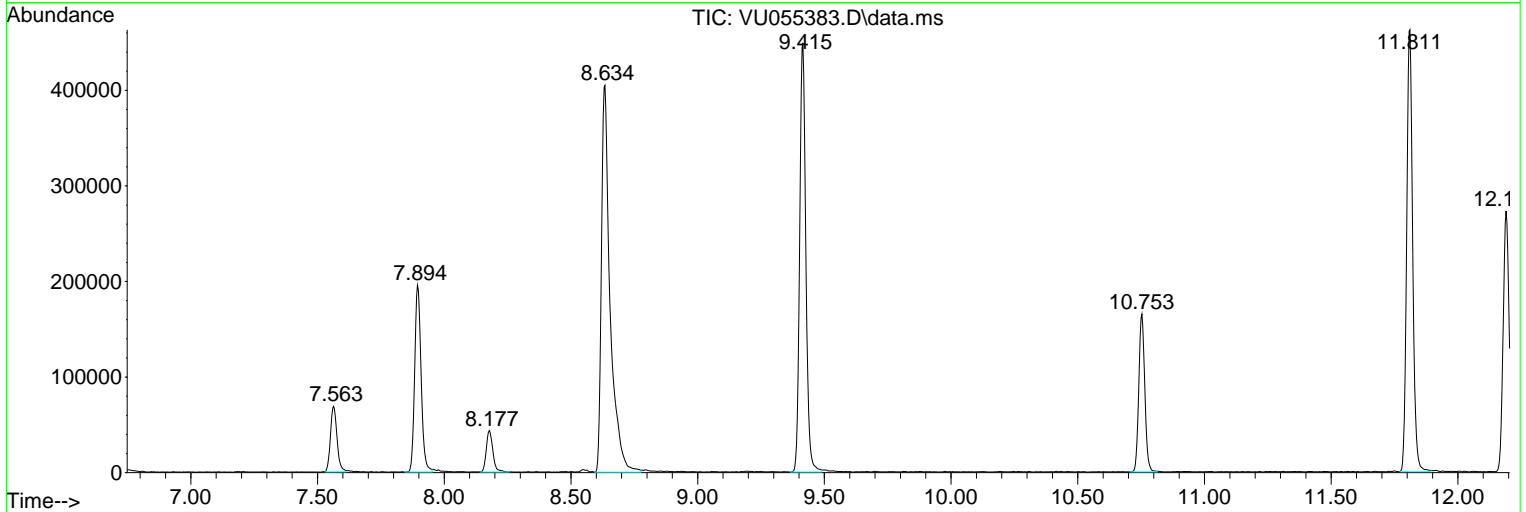
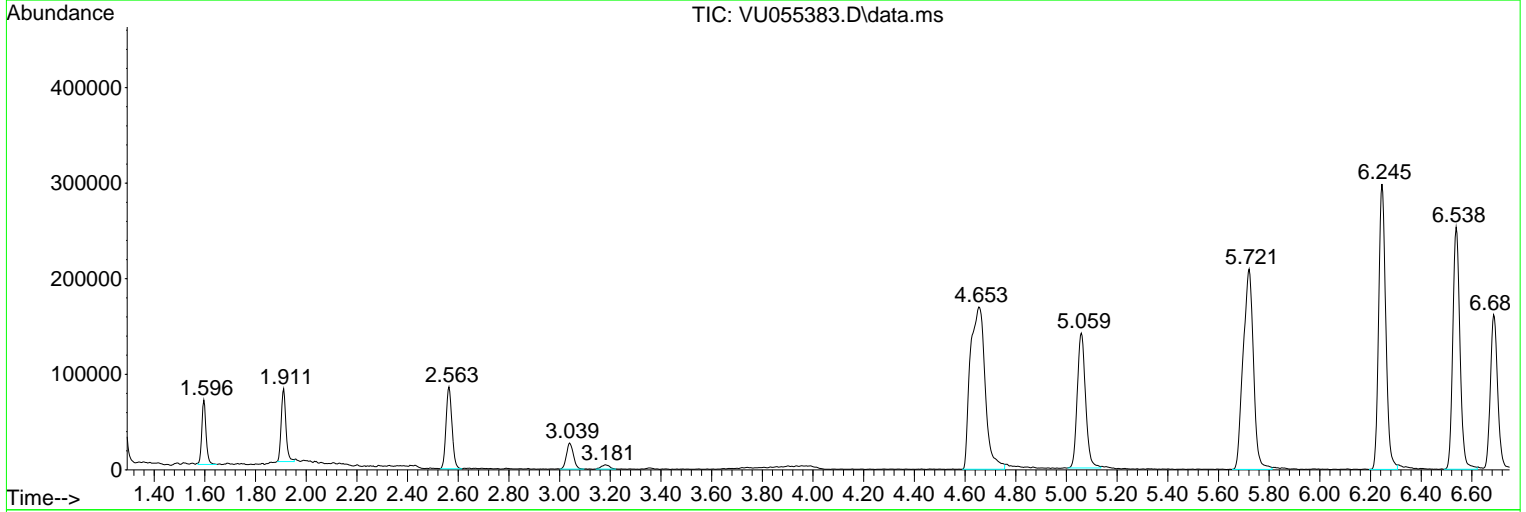
Sum of corrected areas: 7149153

Data Path : Z:\voasrv\HPCHEM1\MSVOA_U\Data\VU091823\
 Data File : VU055383.D
 Acq On : 18 Sep 2023 20:01
 Operator : MD/SY
 Sample : 04380-19DL 100X
 Misc : 25.0mL/MSVOA_U/WATER
 ALS Vial : 22 Sample Multiplier: 1

Instrument :
 MSVOA_U
 ClientSampleId :
 BH4P0DL

Quant Method : Z:\voasrv\HPCHEM1\MSVOA_U\Method\SFAMUTR091523WMA.M
 Quant Title : TRACE VOA SFAM1.0

TIC Library : C:\Database\NIST20.L
 TIC Integration Parameters: LSCINT.P



Library Search Compound Report

Data Path : Z:\voasrv\HPCHEM1\MSVOA_U\Data\VU091823\
Data File : VU055383.D
Acq On : 18 Sep 2023 20:01
Operator : MD/SY
Sample : 04380-19DL 100X
Misc : 25.0mL/MSVOA_U/WATER
ALS Vial : 22 Sample Multiplier: 1

Instrument :
MSVOA_U
ClientSampleId :
BH4P0DL

Quant Method : Z:\voasrv\HPCHEM1\MSVOA_U\Method\SFAMUTR091523WMA.M
Quant Title : TRACE VOA SFAM1.0

TIC Library : C:\Database\NIST20.L
TIC Integration Parameters: LSCINT.P

No Library Search Compounds Detected

Data Path : Z:\voasrv\HPCHEM1\MSVOA_U\Data\VU091823\
Data File : VU055383.D
Acq On : 18 Sep 2023 20:01
Operator : MD/SY
Sample : 04380-19DL 100X
Misc : 25.0mL/MSVOA_U/WATER
ALS Vial : 22 Sample Multiplier: 1

Instrument :
MSVOA_U
ClientSampleId :
BH4P0DL

Quant Method : Z:\voasrv\HPCHEM1\MSVOA_U\Method\SFAMUTR091523WMA.M
Quant Title : TRACE VOA SFAM1.0

TIC Library : C:\Database\NIST20.L
TIC Integration Parameters: LSCINT.P

TIC Top Hit name	RT	EstConc	Units	Response	--Internal Standard--		
					#	RT	Resp Conc
