

Data Path : Z:\voasrv\HPCHEM1\MSVOA_U\Data\VU091824\
 Data File : VU060859.D
 Acq On : 18 Sep 2024 10:03
 Operator : MD/SY
 Sample : VSTDCCC005
 Misc : 25.0mL/MSVOA_U/WATER
 ALS Vial : 2 Sample Multiplier: 1

Instrument :
 MSVOA_U
 ClientSampleId :

Quant Time: Sep 19 05:09:10 2024
 Quant Method : Z:\voasrv\HPCHEM1\MSVOA_U\Method\SFAMUTR091624WMA.M
 Quant Title : TRACE VOA SFAM1.0
 QLast Update : Wed Sep 18 02:40:24 2024
 Response via : Initial Calibration

Compound	R.T.	QI on	Response	Conc	Units	Dev(Min)
Internal Standards						
1) 1,4-Difluorobenzene	6.242	114	145535	5.000	ug/L	0.00
28) Chlorobenzene-d5	9.412	117	151048	5.000	ug/L	0.00
58) 1,4-Dichlorobenzene-d4	11.807	152	75428	5.000	ug/L	0.00
System Monitoring Compounds						
4) Vinyl chloride-d3	1.595	65	51996	3.972	ug/L	0.00
Spike Amount	5.000	Range	40 - 130	Recovery	=	79.400%
7) Chloroethane-d5	1.911	69	41141	4.414	ug/L	0.00
Spike Amount	5.000	Range	65 - 130	Recovery	=	88.200%
11) 1,1-Dichloroethene-d2	2.563	65	19703	4.247	ug/L	0.00
Spike Amount	5.000	Range	60 - 125	Recovery	=	85.000%
20) 2-Butanone-d5	4.637	46	103772	49.382	ug/L	0.00
Spike Amount	50.000	Range	40 - 130	Recovery	=	98.760%
24) Chloroform-d	5.055	84	93269	4.661	ug/L	0.00
Spike Amount	5.000	Range	70 - 125	Recovery	=	93.200%
26) 1,2-Dichloroethane-d4	5.695	65	44549	4.658	ug/L	0.00
Spike Amount	5.000	Range	70 - 130	Recovery	=	93.200%
32) Benzene-d6	5.721	84	185201	4.575	ug/L	0.00
Spike Amount	5.000	Range	70 - 125	Recovery	=	91.400%
36) 1,2-Dichloropropane-d6	6.682	67	56118	4.480	ug/L	0.00
Spike Amount	5.000	Range	60 - 140	Recovery	=	89.600%
41) Toluene-d8	7.891	98	179827	4.872	ug/L	0.00
Spike Amount	5.000	Range	70 - 130	Recovery	=	97.400%
43) trans-1,3-Dichloropropene	8.174	79	20652	4.580	ug/L	0.00
Spike Amount	5.000	Range	55 - 130	Recovery	=	91.600%
46) 2-Hexanone-d5	8.627	63	89583	50.367	ug/L	0.00
Spike Amount	50.000	Range	45 - 130	Recovery	=	100.740%
56) 1,1,2,2-Tetrachloroethene	10.746	84	48227	4.914	ug/L	0.00
Spike Amount	5.000	Range	65 - 120	Recovery	=	98.200%
66) 1,2-Dichlorobenzene-d4	12.187	152	62410	4.924	ug/L	0.00
Spike Amount	5.000	Range	80 - 120	Recovery	=	98.400%
Target Compounds						
2) Dichlorodifluoromethane	1.383	85	53565	4.876	ug/L	98
3) Chloromethane	1.518	50	50400	4.343	ug/L	99
5) Vinyl chloride	1.602	62	59826	4.763	ug/L	99
6) Bromomethane	1.856	94	28387	3.537	ug/L	99
8) Chloroethane	1.930	64	35775	4.662	ug/L	96
9) Trichlorofluoromethane	2.136	101	84600	4.904	ug/L	98
10) 1,1,2-Trichloro-1,2,2-trifluoroethane	2.576	101	49619	4.950	ug/L	99
12) 1,1-Dichloroethene	2.576	96	43882	4.793	ug/L	92
13) Acetone	2.653	43	66806	47.652	ug/L	97
14) Carbon disulfide	2.788	76	119783	4.717	ug/L	100
15) Methyl Acetate	2.962	43	18168	5.315	ug/L #	90
16) Methylene chloride	3.039	84	55509	5.236	ug/L	93
17) Methyl tert-butyl Ether	3.357	73	105591	5.103	ug/L	100
18) trans-1,2-Dichloroethene	3.348	96	45697	4.817	ug/L	97
19) 1,1-Dichloroethane	3.862	63	93172	4.892	ug/L	99
21) 2-Butanone	4.718	43	111338	48.786	ug/L	96
22) cis-1,2-Dichloroethene	4.660	96	52579	5.008	ug/L	97
23) Bromochloromethane	4.968	128	25464	5.136	ug/L	93
25) Chloroform	5.081	83	99018	4.986	ug/L	93

Data Path : Z:\voasrv\HPCHEM1\MSVOA_U\Data\VU091824\
 Data File : VU060859.D
 Acq On : 18 Sep 2024 10:03
 Operator : MD/SY
 Sample : VSTDCCC005
 Misc : 25.0mL/MSVOA_U/WATER
 ALS Vial : 2 Sample Multiplier: 1

Instrument :
 MSVOA_U
 ClientSampleId :

Quant Time: Sep 19 05:09:10 2024
 Quant Method : Z:\voasrv\HPCHEM1\MSVOA_U\Method\SFAMUTR091624WMA.M
 Quant Title : TRACE VOA SFAM1.0
 QLast Update : Wed Sep 18 02:40:24 2024
 Response via : Initial Calibration

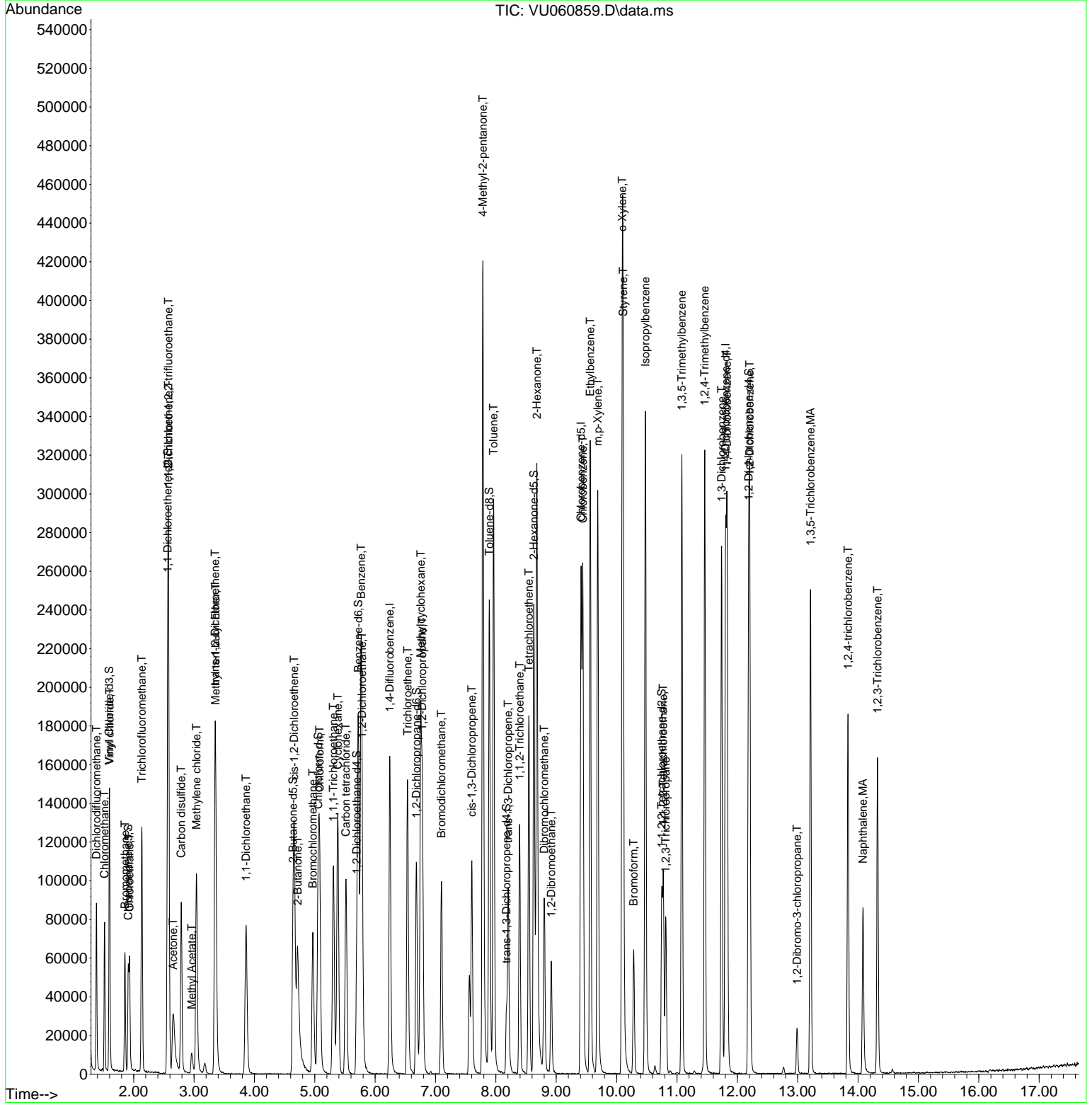
Compound	R.T.	QI on	Response	Conc	Units	Dev(Min)
27) 1,2-Dichloroethane	5.785	62	56681	4.925	ug/L	99
29) 1,1,1-Trichloroethane	5.309	97	79923	4.901	ug/L	97
30) Cyclohexane	5.380	56	63567	4.743	ug/L	97
31) Carbon tetrachloride	5.515	117	71000	4.918	ug/L	96
33) Benzene	5.766	78	209275	5.039	ug/L	100
34) Trichloroethene	6.537	95	54690	5.023	ug/L	96
35) Methylcyclohexane	6.756	83	68557	4.590	ug/L	100
37) 1,2-Dichloropropane	6.782	63	57030	4.983	ug/L #	97
38) Bromodichloromethane	7.097	83	71154	5.069	ug/L	100
39) cis-1,3-Dichloropropene	7.602	75	70865	4.656	ug/L	97
40) 4-Methyl-2-pentanone	7.785	43	274919	51.442	ug/L	98
42) Toluene	7.962	91	231513	5.331	ug/L	98
44) trans-1,3-Dichloropropene	8.203	75	60452	4.830	ug/L	98
45) 1,1,2-Trichloroethane	8.393	97	42277	5.117	ug/L	97
47) Tetrachloroethene	8.547	164	42718	4.937	ug/L	93
48) 2-Hexanone	8.679	43	207445	53.253	ug/L	99
49) Dibromochloromethane	8.801	129	48722	5.180	ug/L	99
50) 1,2-Dibromoethane	8.917	107	38757	5.256	ug/L	94
51) Chlorobenzene	9.441	112	151891	5.209	ug/L	98
52) Ethylbenzene	9.563	91	236781	5.179	ug/L	100
53) m,p-Xylene	9.688	106	92798	5.353	ug/L	100
54) o-Xylene	10.094	106	90229	5.275	ug/L	92
55) Styrene	10.110	104	152218	5.279	ug/L	99
57) 1,1,2,2-Tetrachloroethane	10.772	83	52234	5.069	ug/L	91
59) Bromoform	10.283	173	29445	5.180	ug/L	97
60) Isopropylbenzene	10.476	105	232118	5.193	ug/L	100
61) 1,2,3-Trichloropropane	10.814	75	36659	5.211	ug/L	99
62) 1,3,5-Trimethylbenzene	11.081	105	173203	4.986	ug/L	97
63) 1,2,4-Trimethylbenzene	11.460	105	176041	5.128	ug/L	98
64) 1,3-Dichlorobenzene	11.740	146	121272	5.396	ug/L	97
65) 1,4-Dichlorobenzene	11.830	146	118658	5.107	ug/L	98
67) 1,2-Dichlorobenzene	12.206	146	111988	5.270	ug/L	98
68) 1,2-Dibromo-3-chloropropane	12.991	75	7232	5.264	ug/L	97
69) 1,3,5-Trichlorobenzene	13.212	180	83919	4.991	ug/L	98
70) 1,2,4-trichlorobenzene	13.833	180	62839	5.306	ug/L	97
71) Naphthalene	14.081	128	78433	5.021	ug/L	99
72) 1,2,3-Trichlorobenzene	14.322	180	55958	5.469	ug/L	99

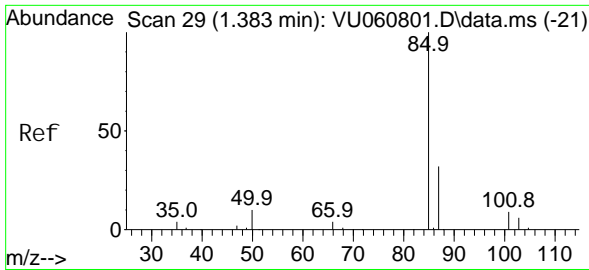
(#) = qualifier out of range (m) = manual integration (+) = signals summed

Data Path : Z:\voasrv\HPCHEM1\MSVOA_U\Data\VU091824\
 Data File : VU060859.D
 Acq On : 18 Sep 2024 10:03
 Operator : MD/SY
 Sample : VSTDCCC005
 Misc : 25.0mL/MSVOA_U/WATER
 ALS Vial : 2 Sample Multiplier: 1

Instrument :
 MSVOA_U
 ClientSampleId :

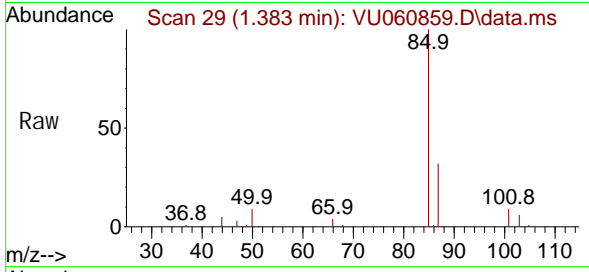
Quant Time: Sep 19 05:09:10 2024
 Quant Method : Z:\voasrv\HPCHEM1\MSVOA_U\Method\SFAMUTR091624WMA.M
 Quant Title : TRACE VOA SFAM1.0
 QLast Update : Wed Sep 18 02:40:24 2024
 Response via : Initial Calibration



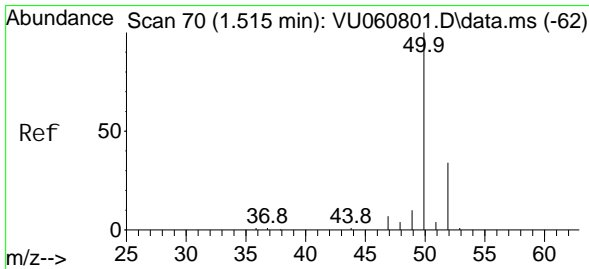
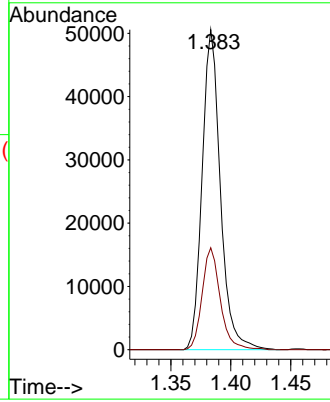
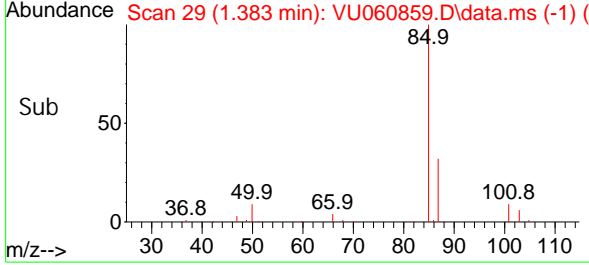


#2
 Di chl orodi fluoromethane
 Concen: 4.876 ug/L
 RT: 1.383 min Scan# 29
 Del ta R. T. -0.000 min
 Lab File: VU060859.D
 Acq: 18 Sep 2024 10:03

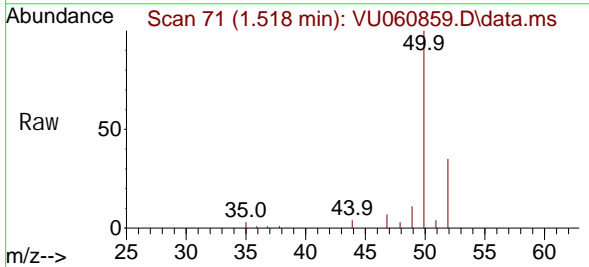
Instrument :
 MSVOA_U
 ClientSampleId :



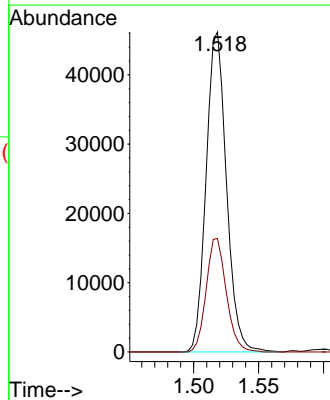
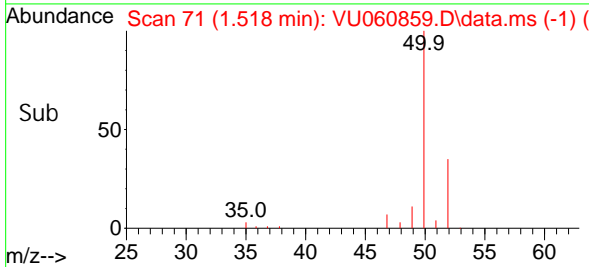
Tgt Ion: 85 Resp: 53565
 Ion Ratio Lower Upper
 85 100
 87 31.7 26.2 39.2

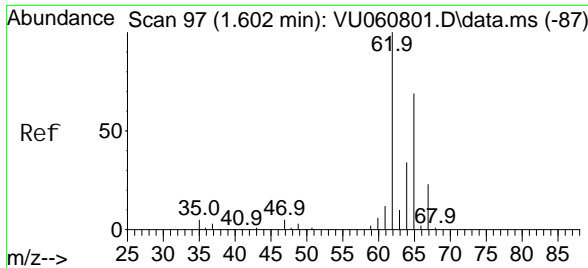


#3
 Chl oromethane
 Concen: 4.343 ug/L
 RT: 1.518 min Scan# 71
 Del ta R. T. 0.003 min
 Lab File: VU060859.D
 Acq: 18 Sep 2024 10:03



Tgt Ion: 50 Resp: 50400
 Ion Ratio Lower Upper
 50 100
 52 35.5 24.4 45.4

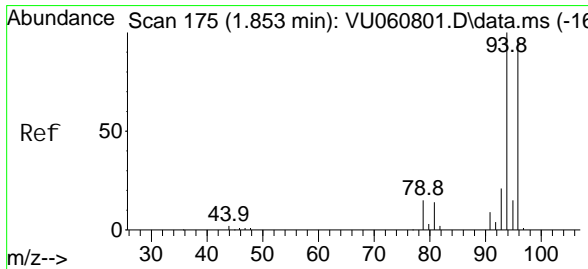
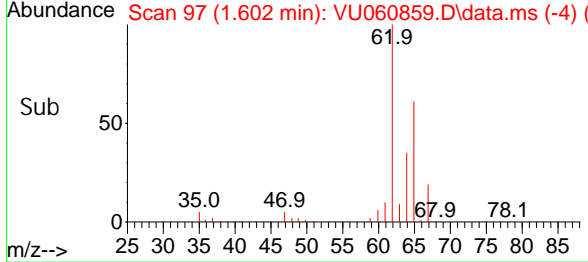
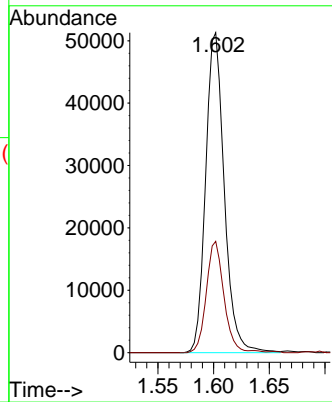
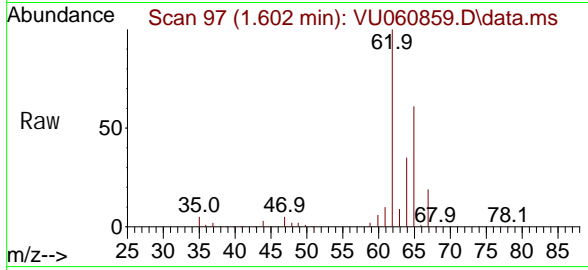




#5
 Vinyl chloride
 Concen: 4.763 ug/L
 RT: 1.602 min Scan# 97
 Delta R.T. -0.000 min
 Lab File: VU060859.D
 Acq: 18 Sep 2024 10:03

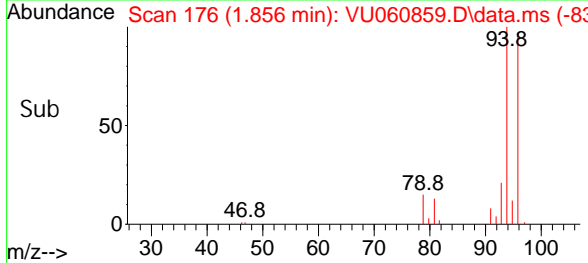
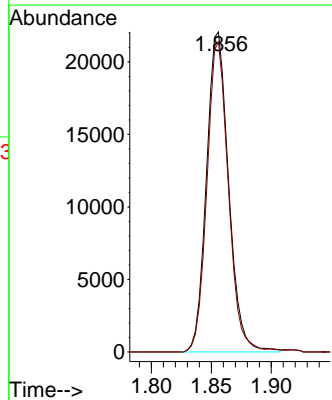
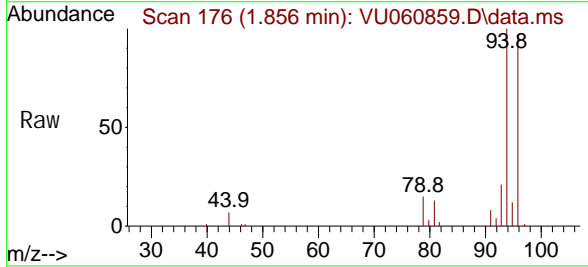
Instrument : MSVOA_U
 ClientSampleId :

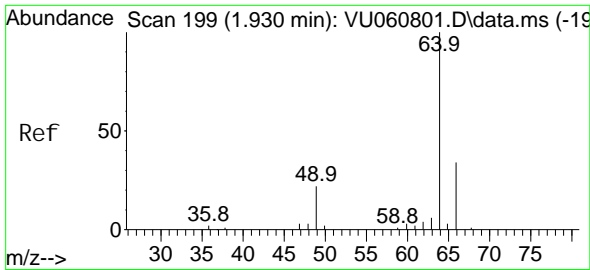
Tgt Ion: 62 Resp: 59826
 Ion Ratio Lower Upper
 62 100
 64 34.8 24.0 44.6



#6
 Bromomethane
 Concen: 3.537 ug/L
 RT: 1.856 min Scan# 176
 Delta R.T. -0.000 min
 Lab File: VU060859.D
 Acq: 18 Sep 2024 10:03

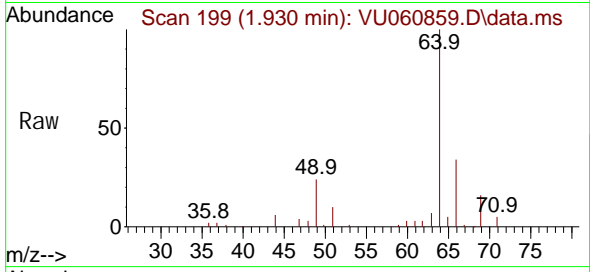
Tgt Ion: 94 Resp: 28387
 Ion Ratio Lower Upper
 94 100
 96 96.9 67.3 124.9



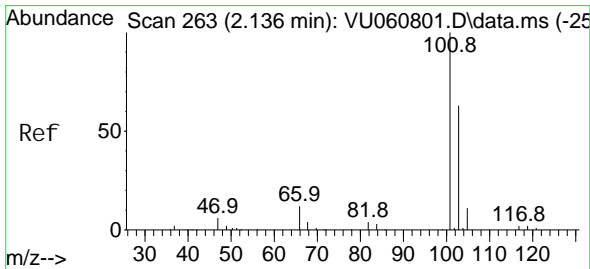
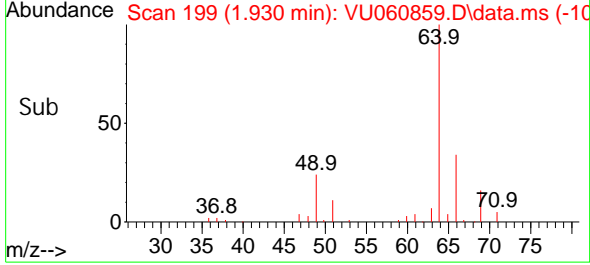
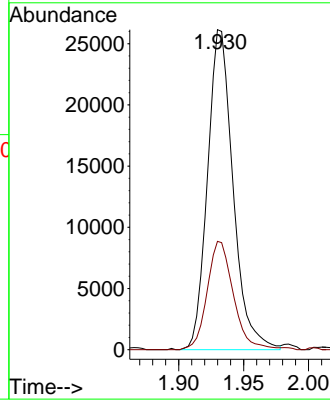


#8
 Chloroethane
 Concen: 4.662 ug/L
 RT: 1.930 min Scan# 199
 Delta R.T. -0.003 min
 Lab File: VU060859.D
 Acq: 18 Sep 2024 10:03

Instrument :
 MSVOA_U
 ClientSampleId :

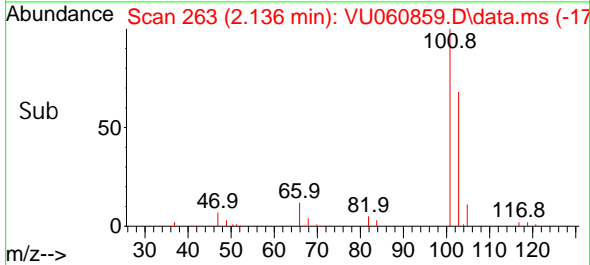
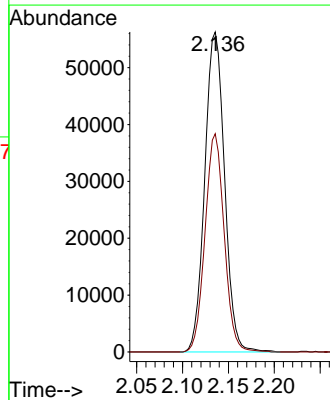
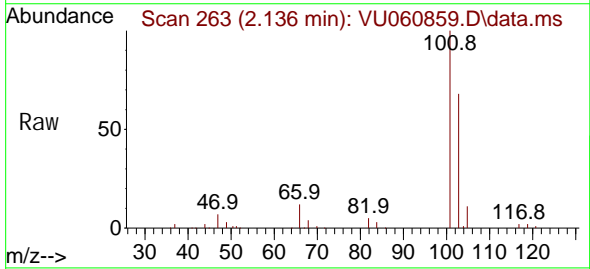


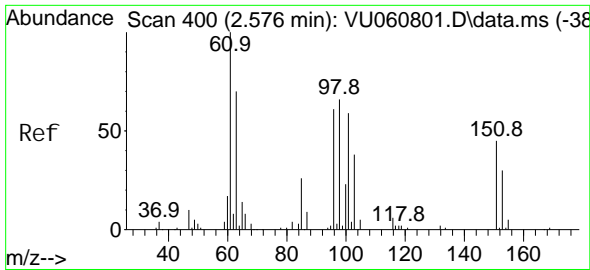
Tgt Ion: 64 Resp: 35775
 Ion Ratio Lower Upper
 64 100
 66 33.8 22.3 41.3



#9
 Trichlorofluoromethane
 Concen: 4.904 ug/L
 RT: 2.136 min Scan# 263
 Delta R.T. -0.000 min
 Lab File: VU060859.D
 Acq: 18 Sep 2024 10:03

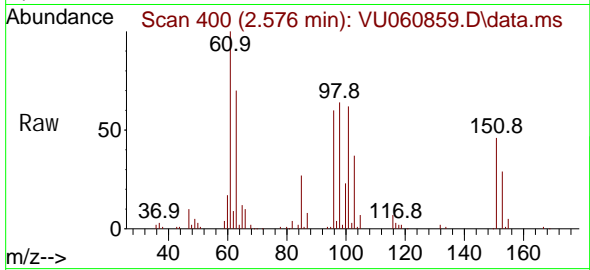
Tgt Ion: 101 Resp: 84600
 Ion Ratio Lower Upper
 101 100
 103 66.0 51.4 77.2





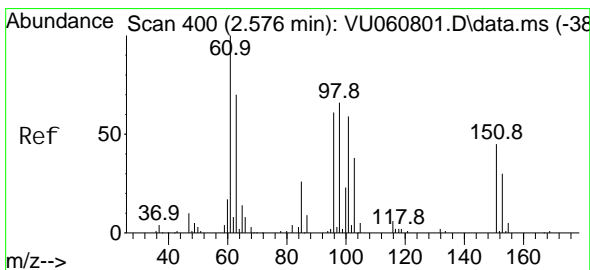
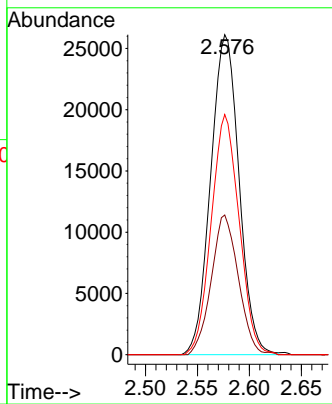
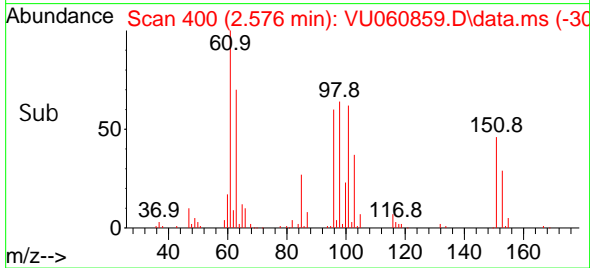
#10
 1,1,2-Tri chloro-1,2,2-tri fluoroethane
 Concen: 4.950 ug/L
 RT: 2.576 min Scan# 400
 Delta R.T. -0.000 min
 Lab File: VU060859.D
 Acq: 18 Sep 2024 10:03

Instrument : MSVOA_U
 ClientSampleId :

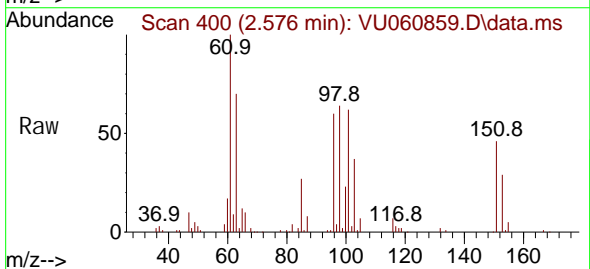


Tgt Ion: 101 Resp: 49619

Ion	Ratio	Lower	Upper
101	100		
85	41.7	34.2	51.4
151	73.8	58.6	88.0

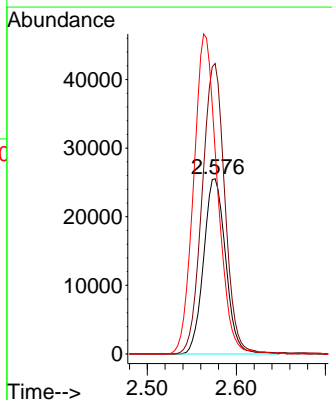
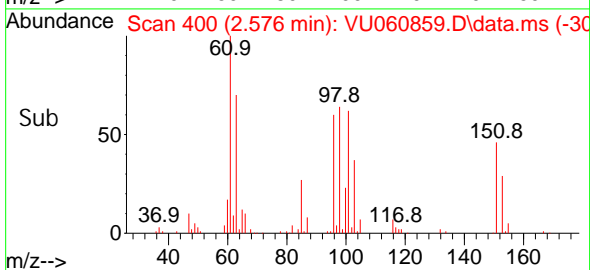


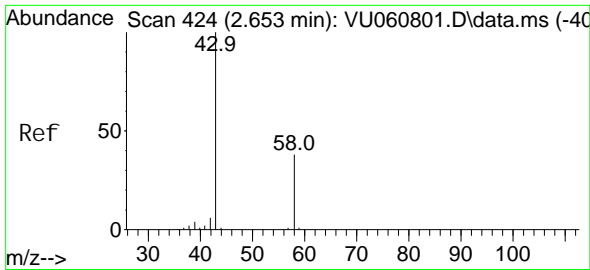
#12
 1,1-Di chloroethene
 Concen: 4.793 ug/L
 RT: 2.576 min Scan# 400
 Delta R.T. 0.003 min
 Lab File: VU060859.D
 Acq: 18 Sep 2024 10:03



Tgt Ion: 96 Resp: 43882

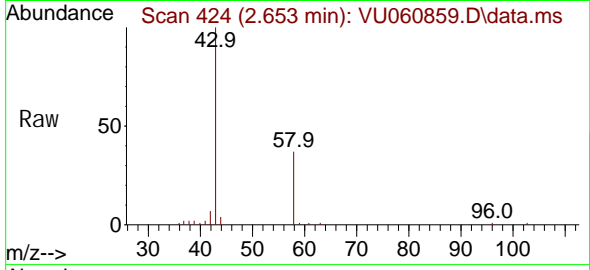
Ion	Ratio	Lower	Upper
96	100		
61	165.7	120.7	224.1
63	115.8	90.0	167.2



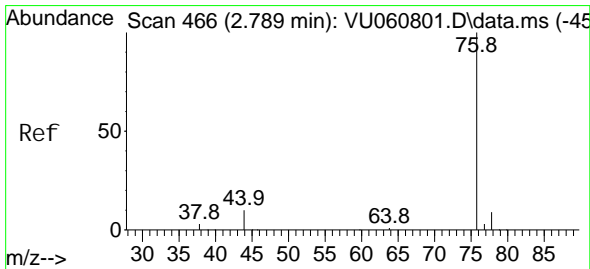
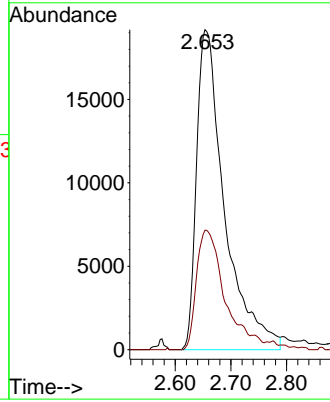
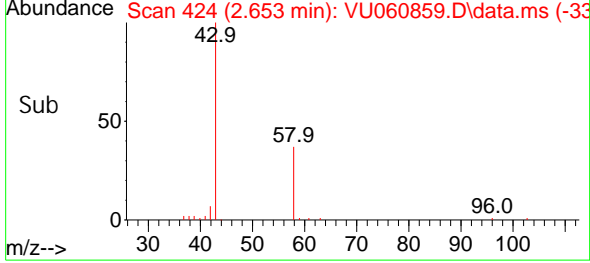


#13
 Acetone
 Concen: 47.652 ug/L
 RT: 2.653 min Scan# 431
 Delta R.T. -0.006 min
 Lab File: VU060859.D
 Acq: 18 Sep 2024 10:03

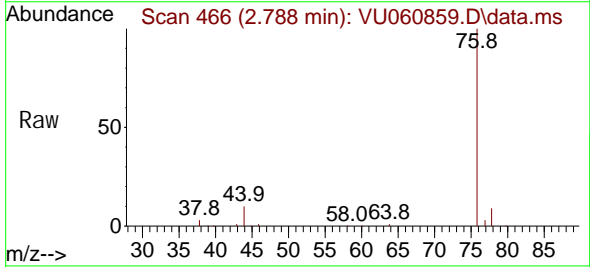
Instrument : MSVOA_U
 ClientSampleId :



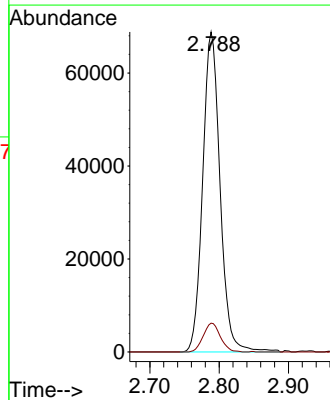
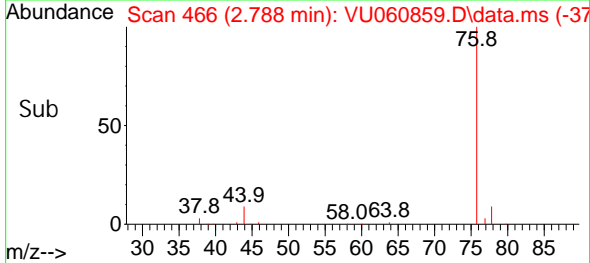
Tgt Ion: 43 Resp: 66806
 Ion Ratio Lower Upper
 43 100
 58 36.6 0.0 69.6

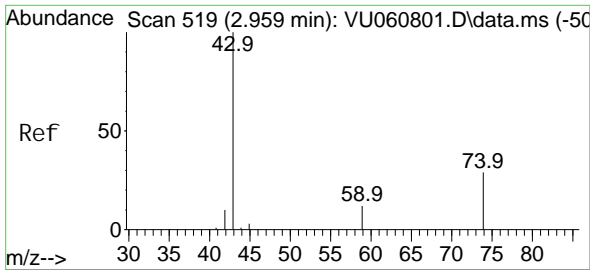


#14
 Carbon di sul fi de
 Concen: 4.717 ug/L
 RT: 2.788 min Scan# 466
 Delta R.T. -0.000 min
 Lab File: VU060859.D
 Acq: 18 Sep 2024 10:03



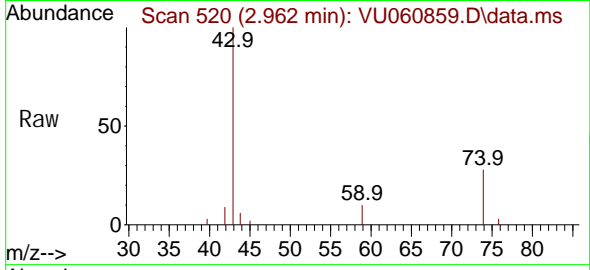
Tgt Ion: 76 Resp: 119783
 Ion Ratio Lower Upper
 76 100
 78 9.0 7.1 10.7



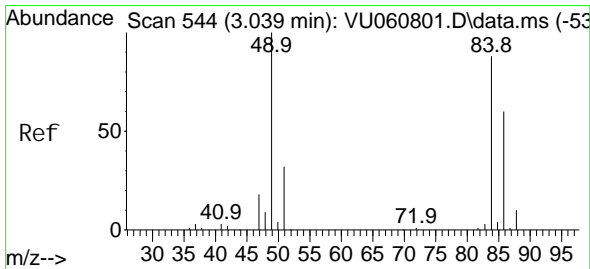
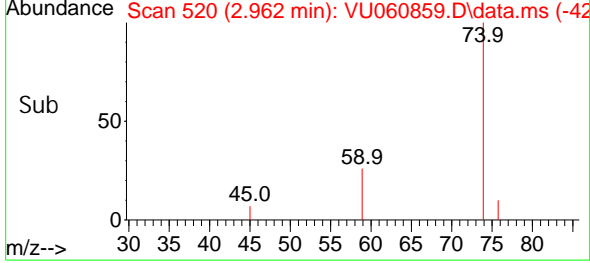
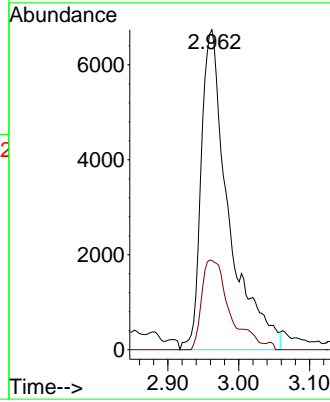


#15
Methyl Acetate
Concen: 5.315 ug/L
RT: 2.962 min Scan# 519
Delta R.T. -0.000 min
Lab File: VU060859.D
Acq: 18 Sep 2024 10:03

Instrument : MSVOA_U
ClientSampleId :

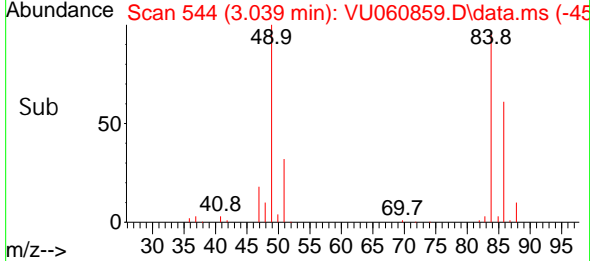
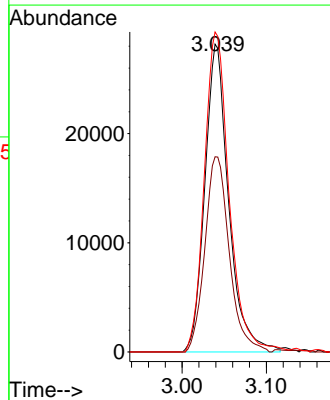
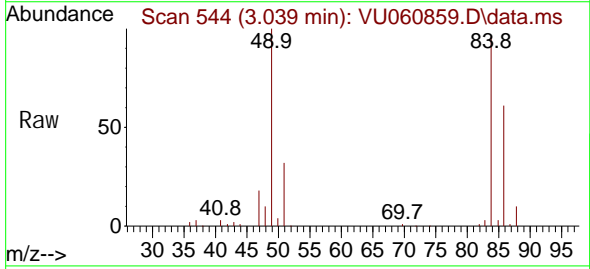


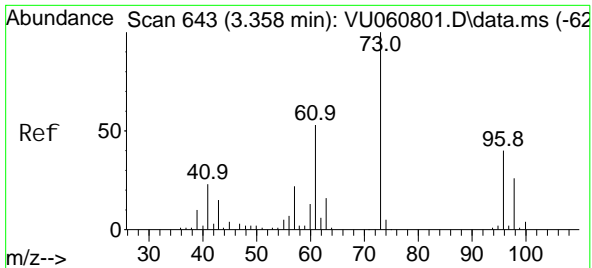
Tgt Ion: 43 Resp: 18168
Ion Ratio Lower Upper
43 100
74 28.4 18.9 28.3#



#16
Methylene chloride
Concen: 5.236 ug/L
RT: 3.039 min Scan# 544
Delta R.T. -0.000 min
Lab File: VU060859.D
Acq: 18 Sep 2024 10:03

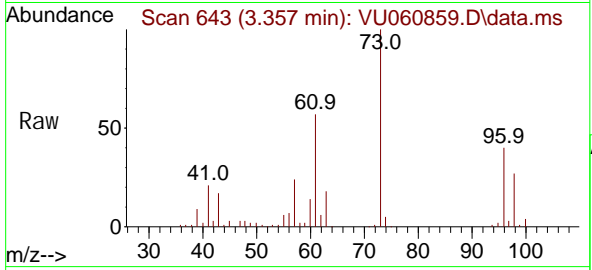
Tgt Ion: 84 Resp: 55509
Ion Ratio Lower Upper
84 100
86 63.4 47.3 87.8
49 104.0 78.7 146.1





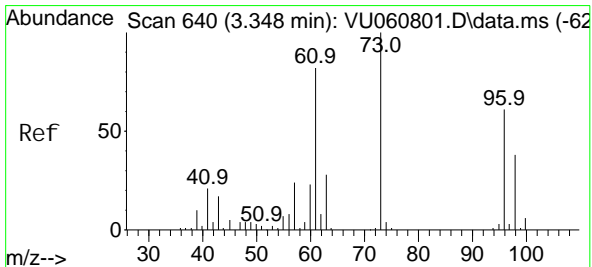
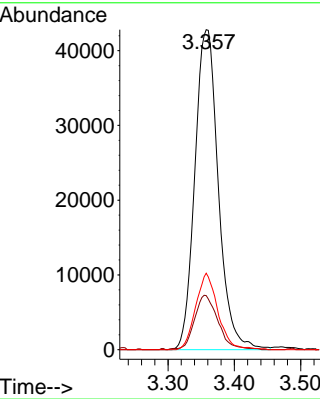
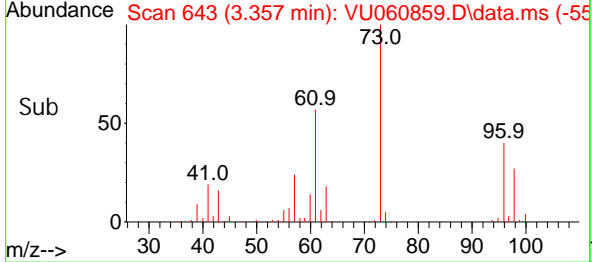
#17
 Methyl tert-butyl Ether
 Concen: 5.103 ug/L
 RT: 3.357 min Scan# 643
 Delta R.T. -0.000 min
 Lab File: VU060859.D
 Acq: 18 Sep 2024 10:03

Instrument : MSVOA_U
 ClientSampleId :

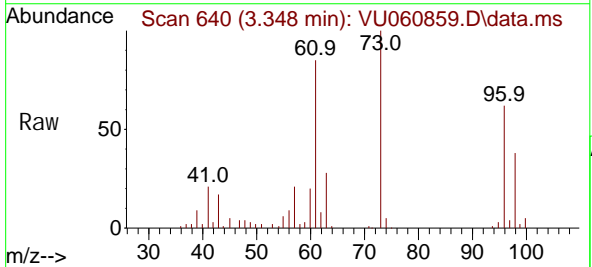


Tgt Ion: 73 Resp: 105591

Ion	Ratio	Lower	Upper
73	100		
43	17.0	13.8	20.8
57	22.6	18.0	27.0

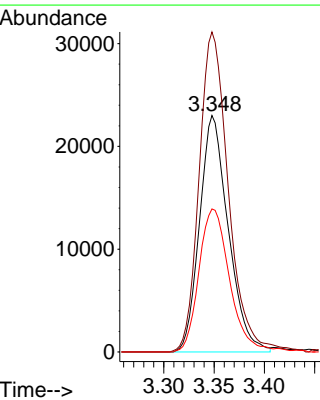
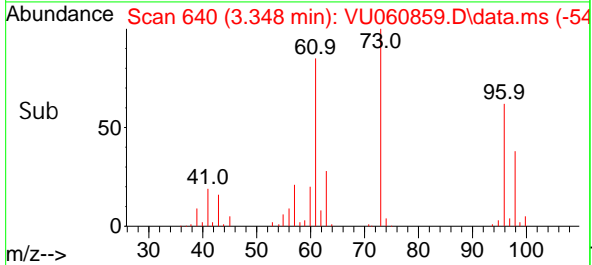


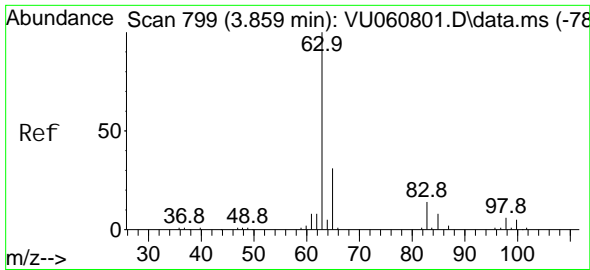
#18
 trans-1,2-Dichloroethene
 Concen: 4.817 ug/L
 RT: 3.348 min Scan# 640
 Delta R.T. -0.000 min
 Lab File: VU060859.D
 Acq: 18 Sep 2024 10:03



Tgt Ion: 96 Resp: 45697

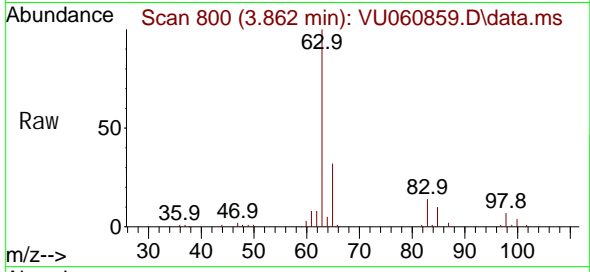
Ion	Ratio	Lower	Upper
96	100		
61	135.3	97.2	180.6
98	60.4	43.3	80.5



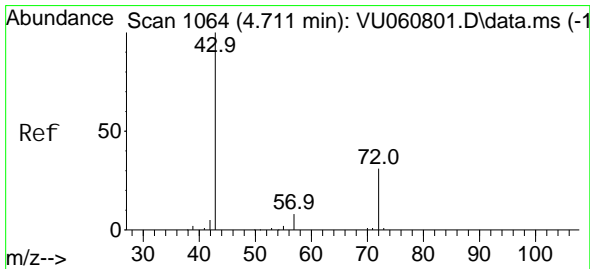
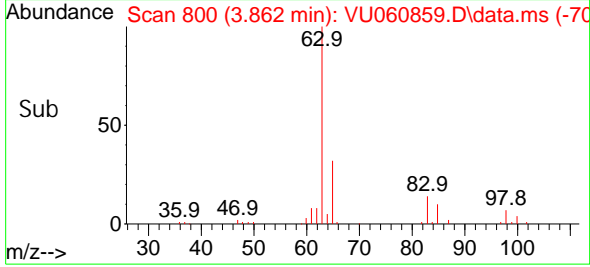
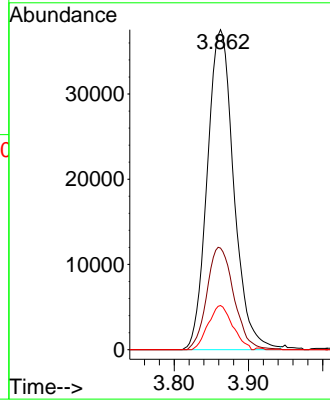


#19
 1,1-Dichloroethane
 Concen: 4.892 ug/L
 RT: 3.862 min Scan# 800
 Delta R.T. -0.000 min
 Lab File: VU060859.D
 Acq: 18 Sep 2024 10:03

Instrument :
 MSVOA_U
 ClientSampleId :

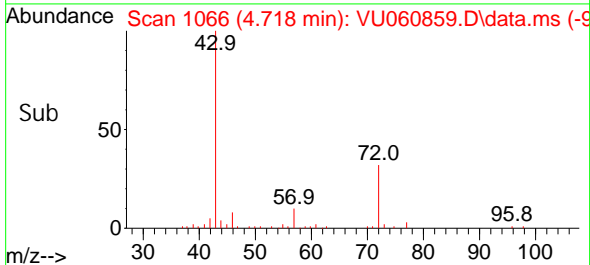
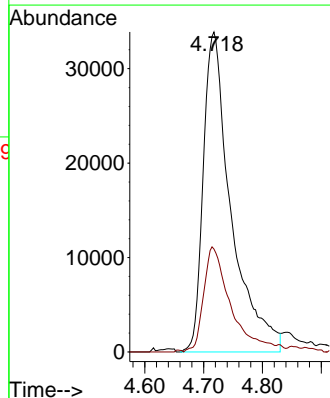
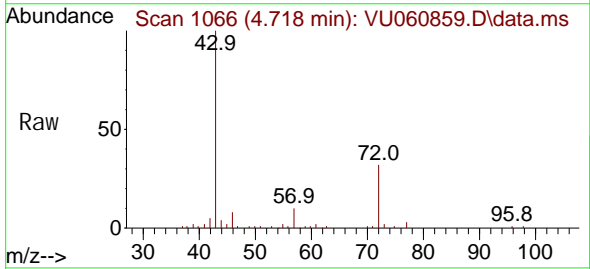


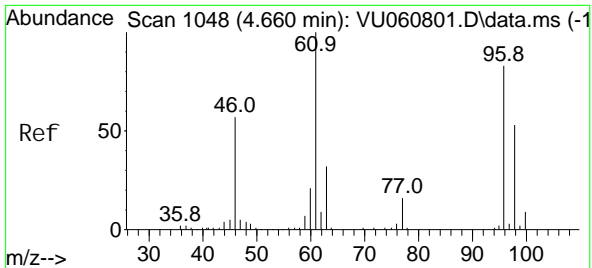
Tgt Ion: 63 Resp: 93172
 Ion Ratio Lower Upper
 63 100
 65 32.6 23.0 42.8
 83 13.8 9.0 16.6



#21
 2-Butanone
 Concen: 48.786 ug/L
 RT: 4.718 min Scan# 1066
 Delta R.T. 0.003 min
 Lab File: VU060859.D
 Acq: 18 Sep 2024 10:03

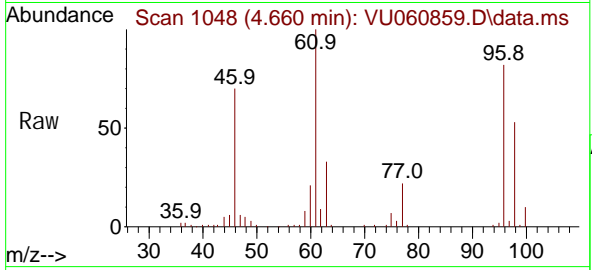
Tgt Ion: 43 Resp: 111338
 Ion Ratio Lower Upper
 43 100
 72 31.8 14.8 44.3





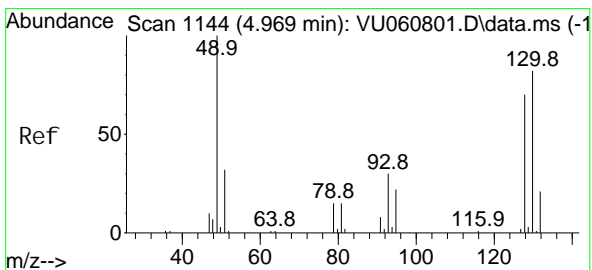
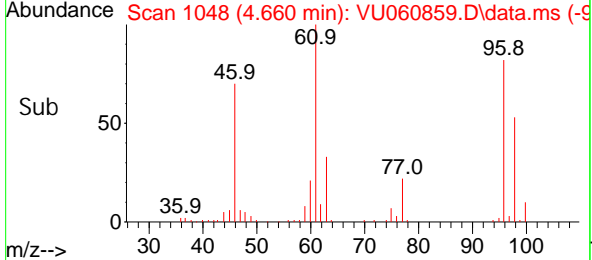
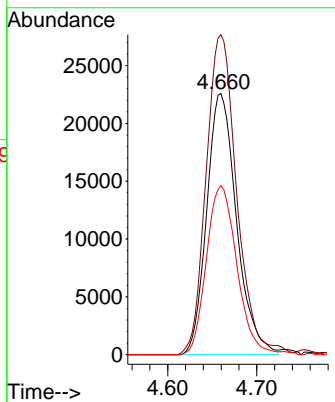
#22
 cis-1,2-Dichloroethene
 Concen: 5.008 ug/L
 RT: 4.660 min Scan# 1048
 Delta R.T. 0.003 min
 Lab File: VU060859.D
 Acq: 18 Sep 2024 10:03

Instrument : MSVOA_U
 ClientSampleId :



Tgt Ion: 96 Resp: 52579

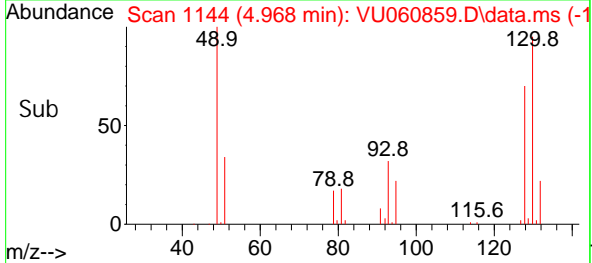
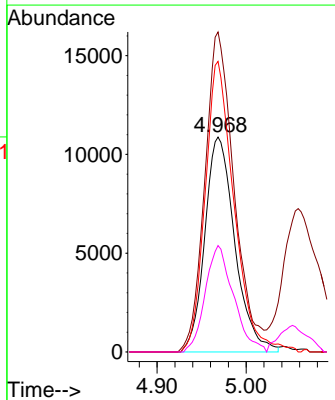
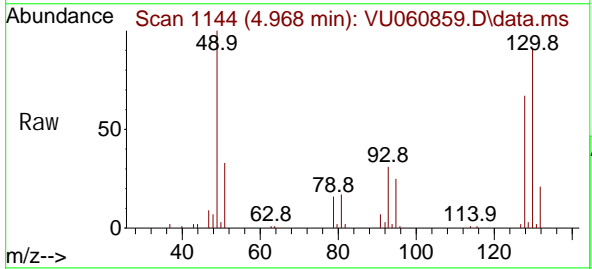
Ion	Ratio	Lower	Upper
96	100		
61	122.5	89.7	166.5
98	64.7	45.1	83.9

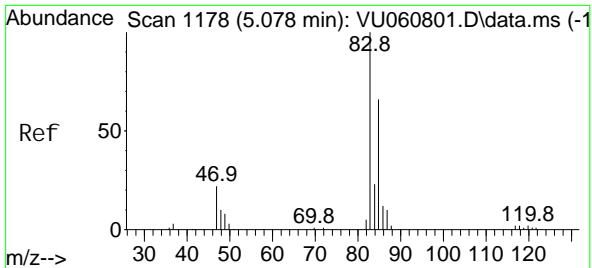


#23
 Bromochloromethane
 Concen: 5.136 ug/L
 RT: 4.968 min Scan# 1144
 Delta R.T. 0.003 min
 Lab File: VU060859.D
 Acq: 18 Sep 2024 10:03

Tgt Ion: 128 Resp: 25464

Ion	Ratio	Lower	Upper
128	100		
49	148.9	109.6	203.6
130	135.2	87.8	163.0
51	49.5	37.3	55.9

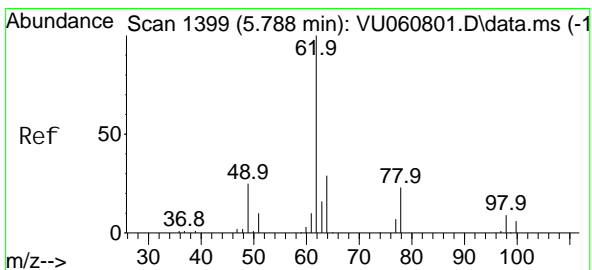
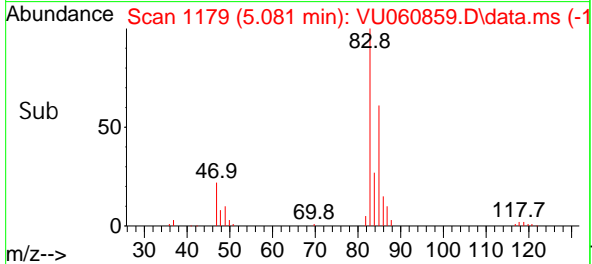
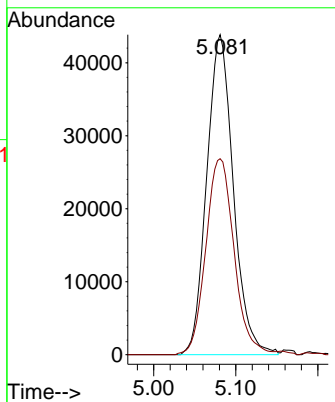
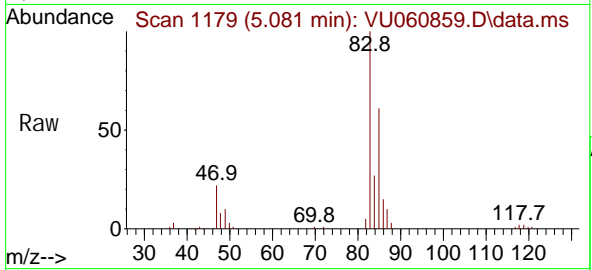




#25
 Chloroform
 Concen: 4.986 ug/L
 RT: 5.081 min Scan# 1178
 Delta R.T. 0.003 min
 Lab File: VU060859.D
 Acq: 18 Sep 2024 10:03

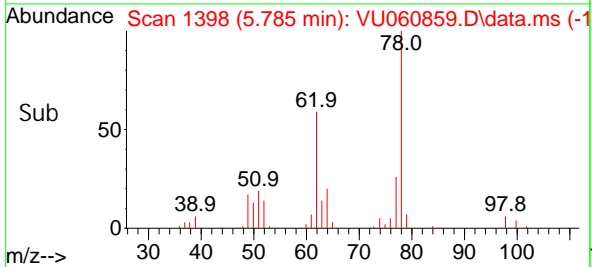
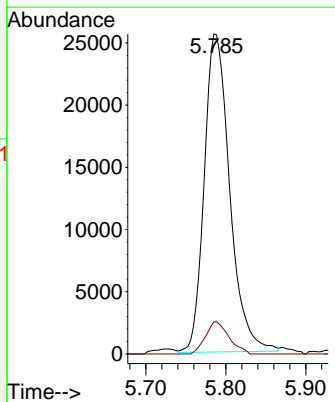
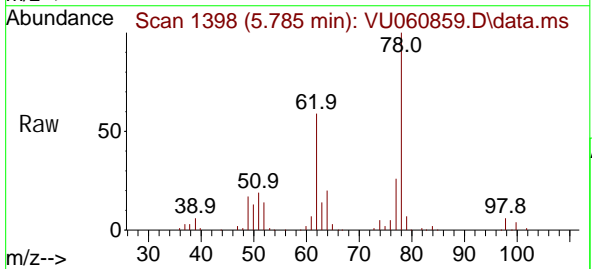
Instrument : MSVOA_U
 ClientSampleId :

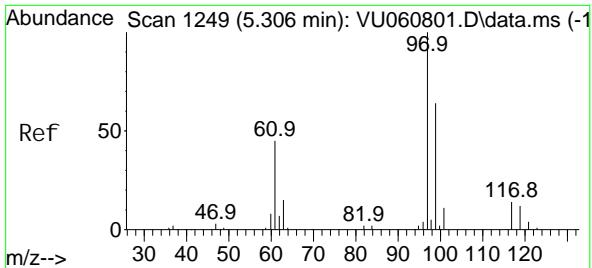
Tgt Ion: 83 Resp: 99018
 Ion Ratio Lower Upper
 83 100
 85 61.2 46.8 86.8



#27
 1,2-Dichloroethane
 Concen: 4.925 ug/L
 RT: 5.785 min Scan# 1398
 Delta R.T. -0.000 min
 Lab File: VU060859.D
 Acq: 18 Sep 2024 10:03

Tgt Ion: 62 Resp: 56681
 Ion Ratio Lower Upper
 62 100
 98 10.0 8.2 12.4



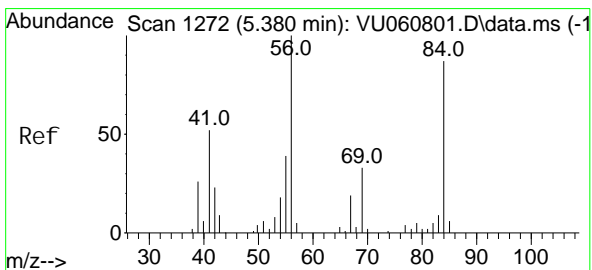
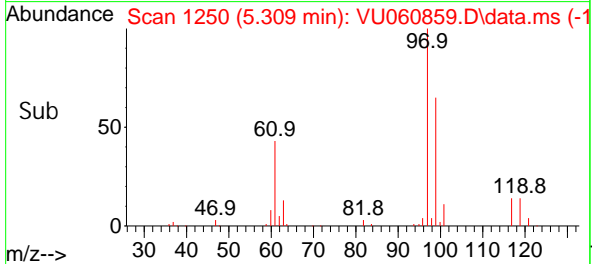
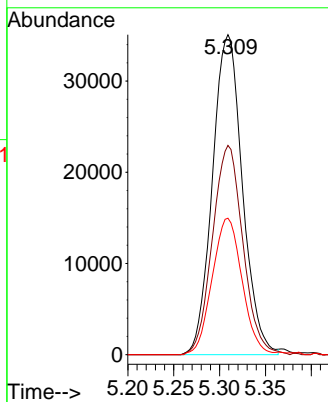
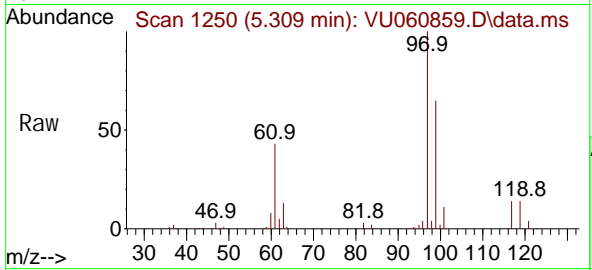


#29
 1,1,1-Trichloroethane
 Concen: 4.901 ug/L
 RT: 5.309 min Scan# 11
 Delta R.T. 0.003 min
 Lab File: VU060859.D
 Acq: 18 Sep 2024 10:03

Instrument :
 MSVOA_U
 ClientSampleId :

Tgt Ion: 97 Resp: 79923

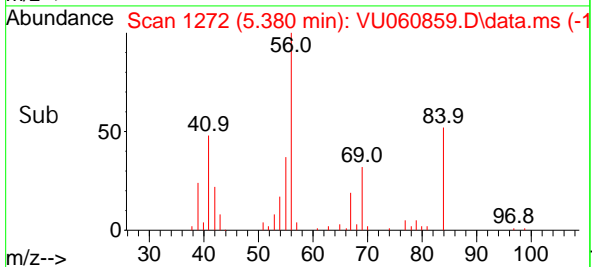
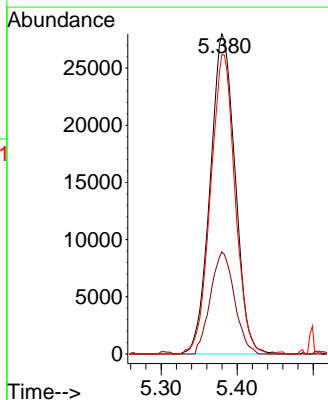
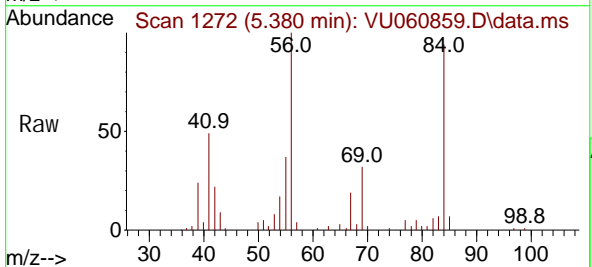
Ion	Ratio	Lower	Upper
97	100		
99	66.3	50.5	75.7
61	42.5	34.4	51.6

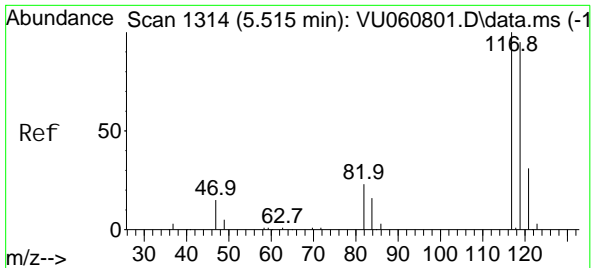


#30
 Cyclohexane
 Concen: 4.743 ug/L
 RT: 5.380 min Scan# 1272
 Delta R.T. -0.000 min
 Lab File: VU060859.D
 Acq: 18 Sep 2024 10:03

Tgt Ion: 56 Resp: 63567

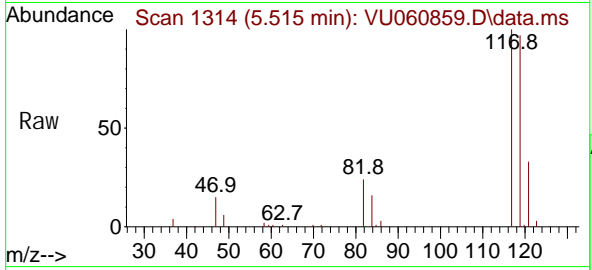
Ion	Ratio	Lower	Upper
56	100		
69	30.7	25.4	38.0
84	91.9	71.0	106.6



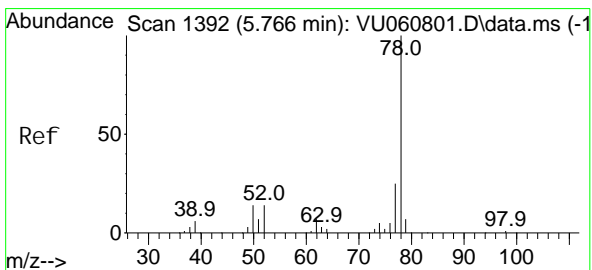
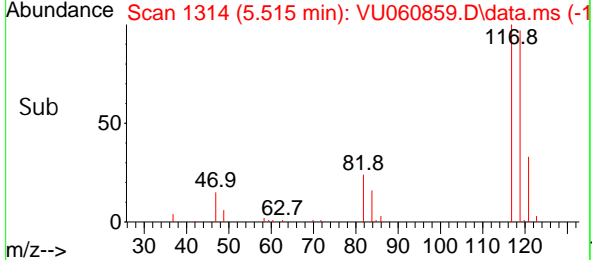
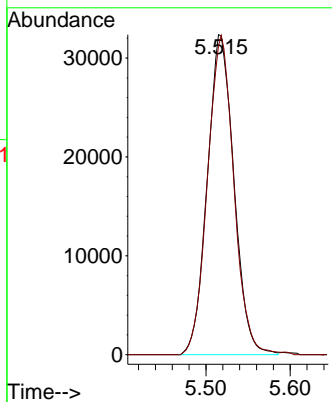


#31
 Carbon tetrachloride
 Concen: 4.918 ug/L
 RT: 5.515 min Scan# 111
 Delta R.T. -0.000 min
 Lab File: VU060859.D
 Acq: 18 Sep 2024 10:03

Instrument : MSVOA_U
 ClientSampleId :

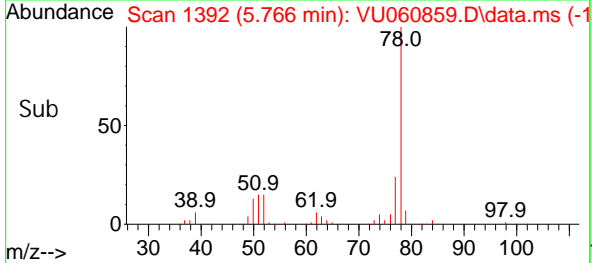
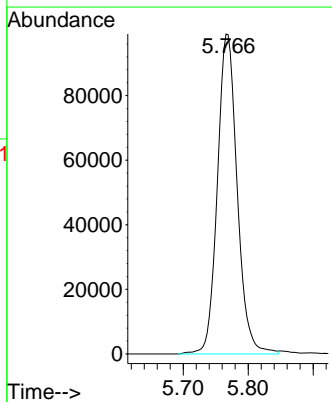
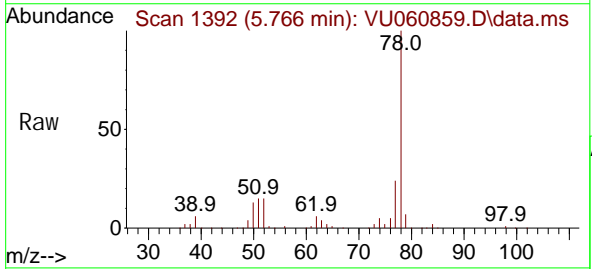


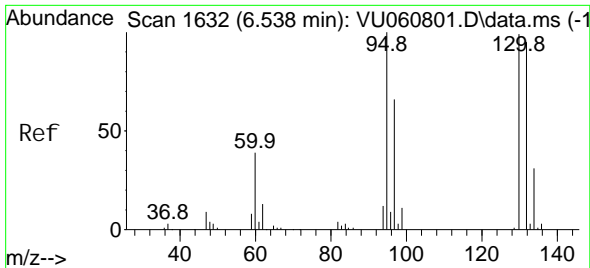
Tgt Ion: 117 Resp: 71000
 Ion Ratio Lower Upper
 117 100
 119 99.0 76.3 114.5



#33
 Benzene
 Concen: 5.039 ug/L
 RT: 5.766 min Scan# 1392
 Delta R.T. -0.000 min
 Lab File: VU060859.D
 Acq: 18 Sep 2024 10:03

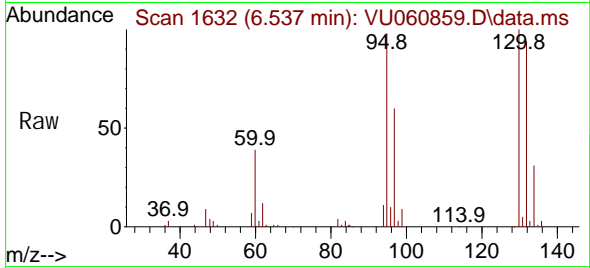
Tgt Ion: 78 Resp: 209275



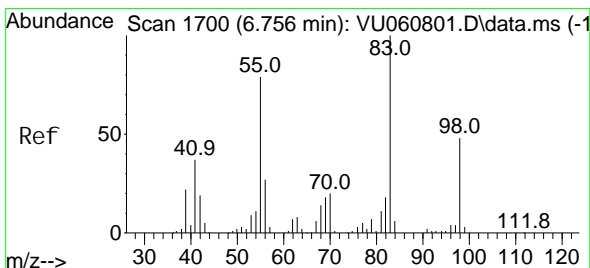
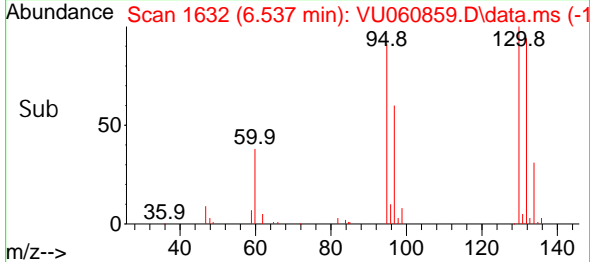
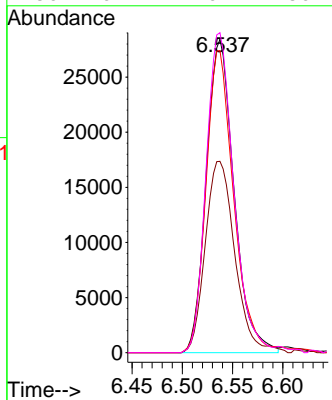


#34
 Trichloroethene
 Concen: 5.023 ug/L
 RT: 6.537 min Scan# 1632
 Delta R.T. 0.003 min
 Lab File: VU060859.D
 Acq: 18 Sep 2024 10:03

Instrument : MSVOA_U
 ClientSampleId :

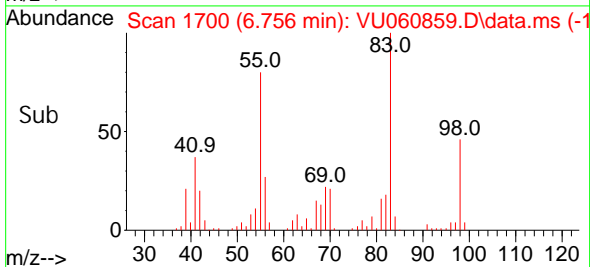
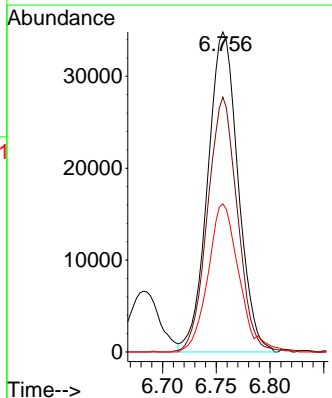
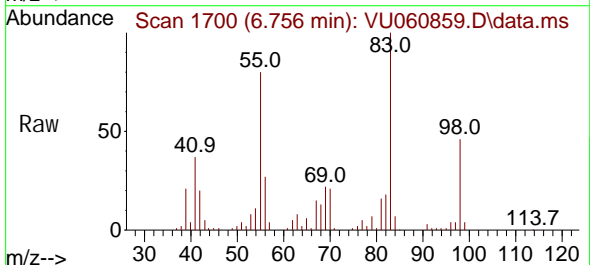


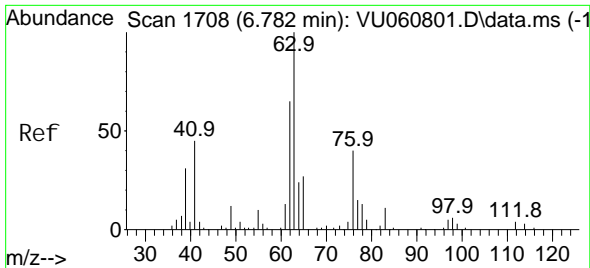
Tgt Ion: 95 Resp: 54690
 Ion Ratio Lower Upper
 95 100
 97 61.1 44.9 83.5
 132 96.4 63.5 117.9
 130 102.1 70.2 130.4



#35
 Methyl cycl ohexane
 Concen: 4.590 ug/L
 RT: 6.756 min Scan# 1700
 Delta R.T. -0.000 min
 Lab File: VU060859.D
 Acq: 18 Sep 2024 10:03

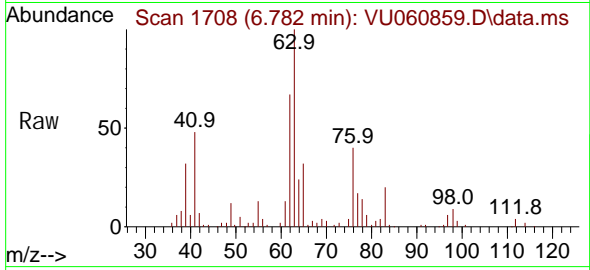
Tgt Ion: 83 Resp: 68557
 Ion Ratio Lower Upper
 83 100
 55 78.5 62.6 94.0
 98 47.1 37.6 56.4



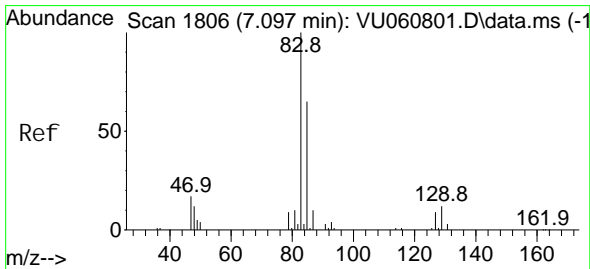
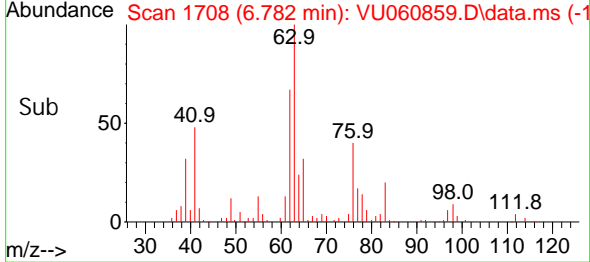
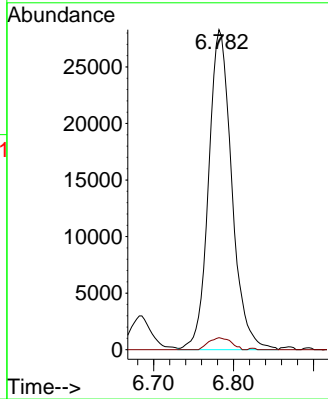


#37
 1, 2-Di chl oropropane
 Concen: 4.983 ug/L
 RT: 6.782 min Scan# 1708
 Delta R.T. -0.000 min
 Lab File: VU060859.D
 Acq: 18 Sep 2024 10:03

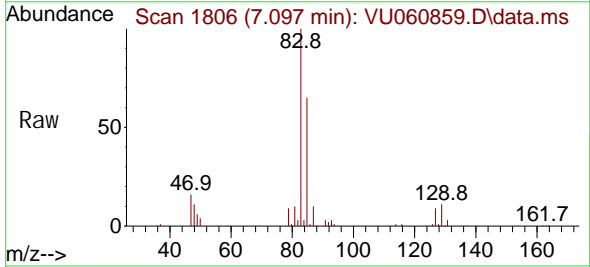
Instrument : MSVOA_U
 ClientSampleId :



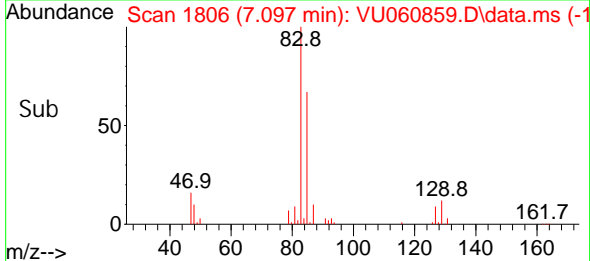
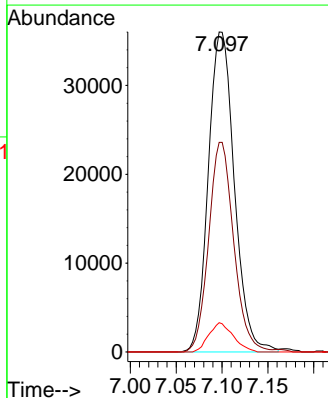
Tgt Ion: 63 Resp: 57030
 Ion Ratio Lower Upper
 63 100
 112 3.6 2.0 3.0#

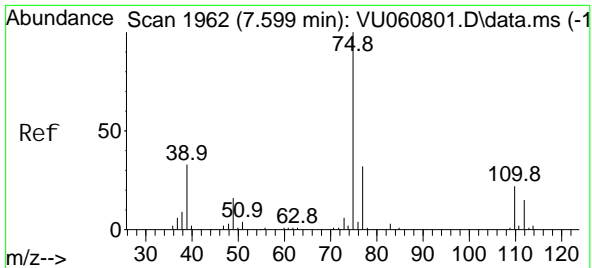


#38
 Bromodi chl oromethane
 Concen: 5.069 ug/L
 RT: 7.097 min Scan# 1806
 Delta R.T. -0.000 min
 Lab File: VU060859.D
 Acq: 18 Sep 2024 10:03



Tgt Ion: 83 Resp: 71154
 Ion Ratio Lower Upper
 83 100
 85 65.5 45.6 84.8
 127 9.2 7.0 10.6

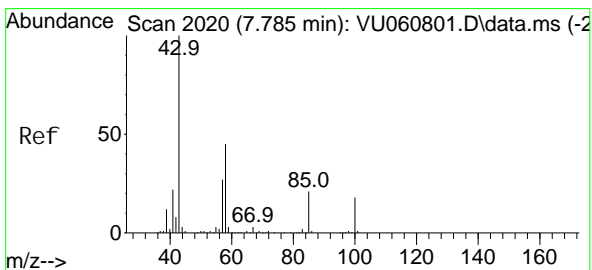
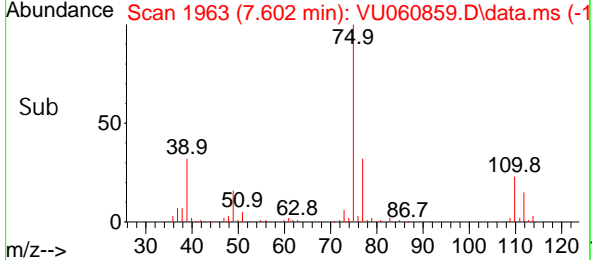
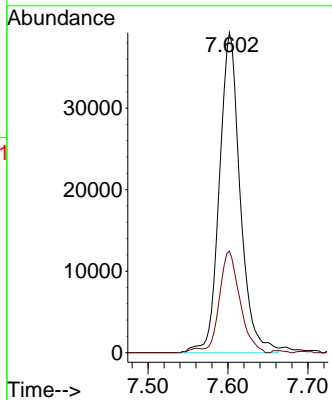
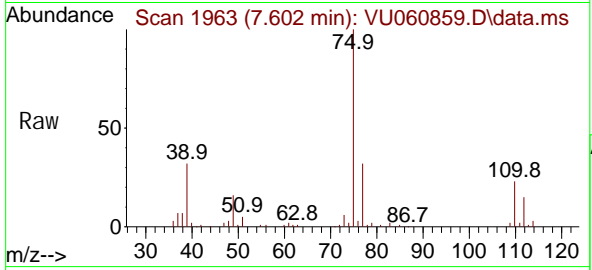




#39
 cis-1,3-Dichloropropene
 Concen: 4.656 ug/L
 RT: 7.602 min Scan# 1962
 Delta R.T. -0.000 min
 Lab File: VU060859.D
 Acq: 18 Sep 2024 10:03

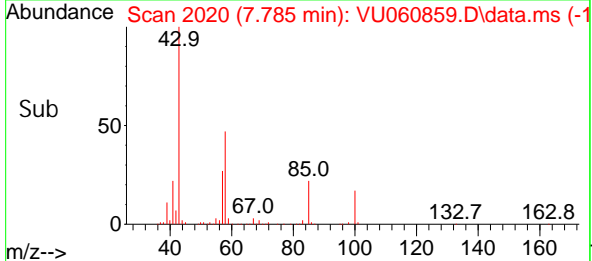
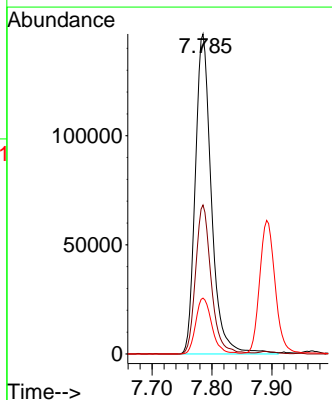
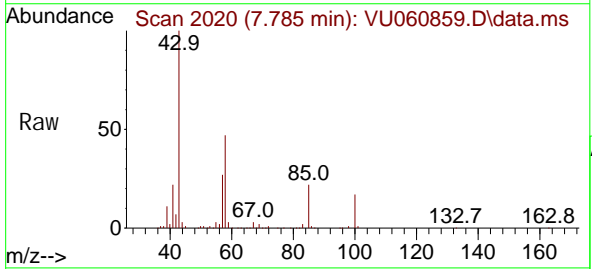
Instrument : MSVOA_U
 ClientSampleId :

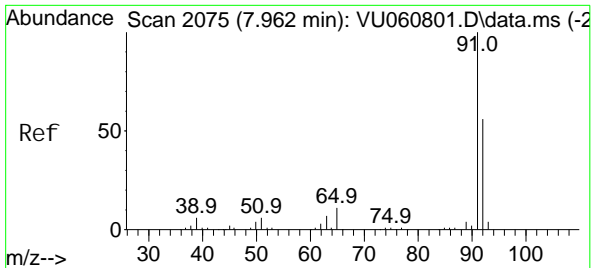
Tgt Ion: 75 Resp: 70865
 Ion Ratio Lower Upper
 75 100
 77 31.8 21.3 39.5



#40
 4-Methyl-2-pentanone
 Concen: 51.442 ug/L
 RT: 7.785 min Scan# 2020
 Delta R.T. -0.000 min
 Lab File: VU060859.D
 Acq: 18 Sep 2024 10:03

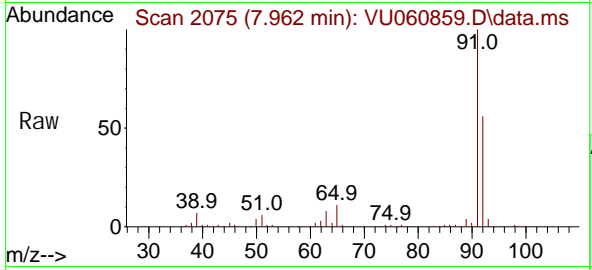
Tgt Ion: 43 Resp: 274919
 Ion Ratio Lower Upper
 43 100
 58 45.1 34.9 52.3
 100 17.4 13.4 20.0



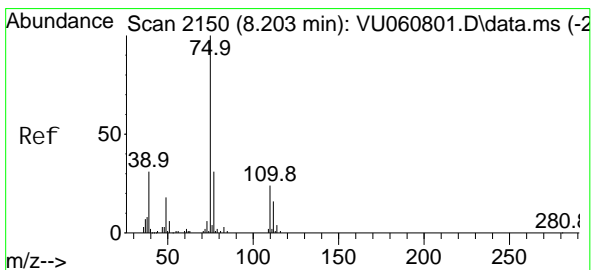
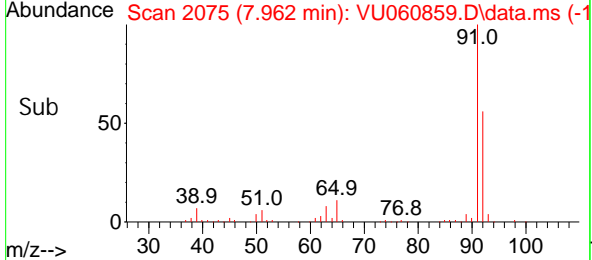
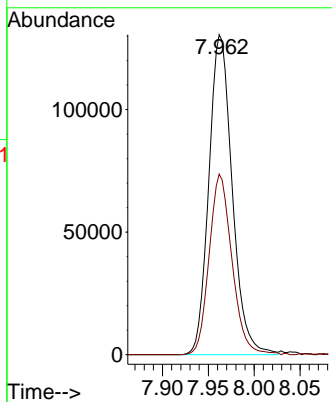


#42
 Tol uene
 Concen: 5.331 ug/L
 RT: 7.962 min Scan# 2075
 Delta R.T. -0.000 min
 Lab File: VU060859.D
 Acq: 18 Sep 2024 10:03

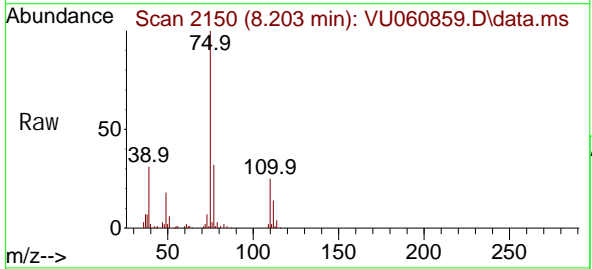
Instrument : MSVOA_U
 ClientSampleId :



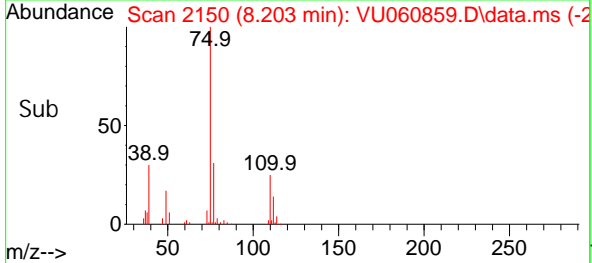
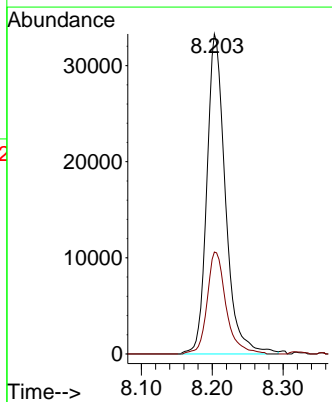
Tgt Ion: 91 Resp: 231513
 Ion Ratio Lower Upper
 91 100
 92 56.4 40.5 75.3

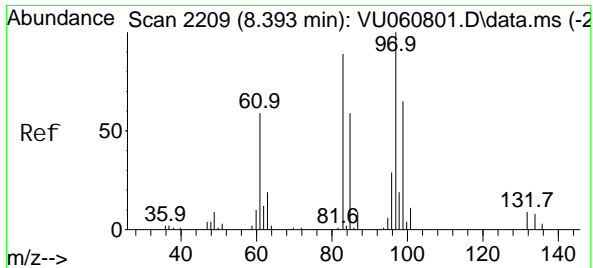


#44
 trans-1, 3-Di chl oropropene
 Concen: 4.830 ug/L
 RT: 8.203 min Scan# 2150
 Delta R.T. -0.000 min
 Lab File: VU060859.D
 Acq: 18 Sep 2024 10:03



Tgt Ion: 75 Resp: 60452
 Ion Ratio Lower Upper
 75 100
 77 31.9 23.1 42.9



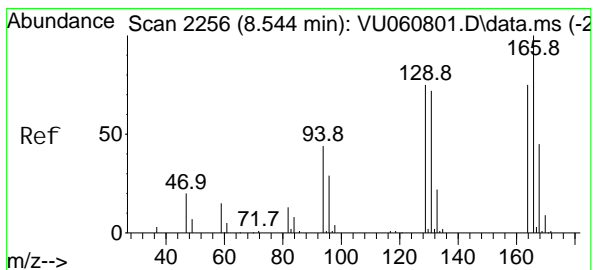
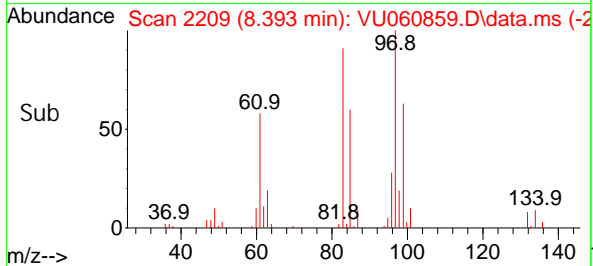
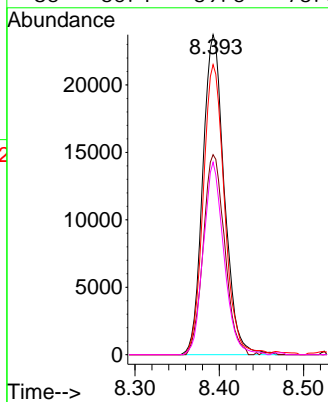
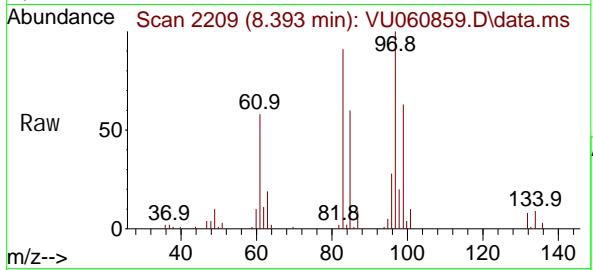


#45
 1,1,2-Trichloroethane
 Concen: 5.117 ug/L
 RT: 8.393 min Scan# 21
 Delta R.T. -0.000 min
 Lab File: VU060859.D
 Acq: 18 Sep 2024 10:03

Instrument : MSVOA_U
 ClientSampleId :

Tgt Ion: 97 Resp: 42277

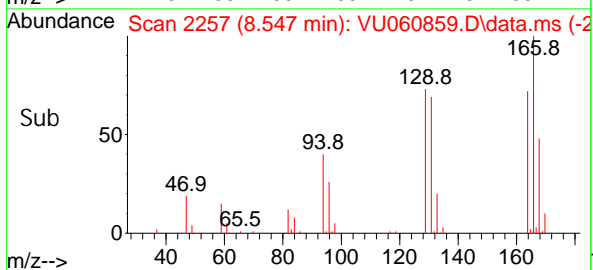
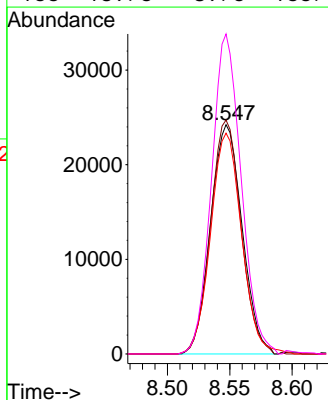
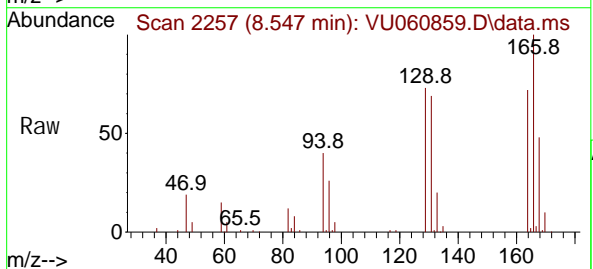
Ion	Ratio	Lower	Upper
97	100		
99	62.5	42.3	78.5
83	90.7	61.7	114.5
85	60.1	39.5	73.3

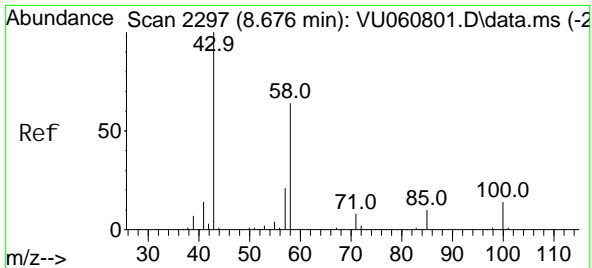


#47
 Tetrachloroethene
 Concen: 4.937 ug/L
 RT: 8.547 min Scan# 2257
 Delta R.T. 0.003 min
 Lab File: VU060859.D
 Acq: 18 Sep 2024 10:03

Tgt Ion: 164 Resp: 42718

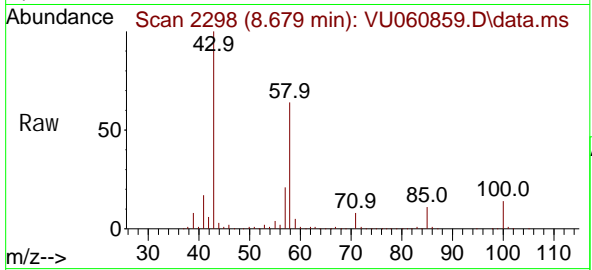
Ion	Ratio	Lower	Upper
164	100		
129	102.0	67.3	124.9
131	96.3	65.4	121.4
166	139.6	89.5	166.1



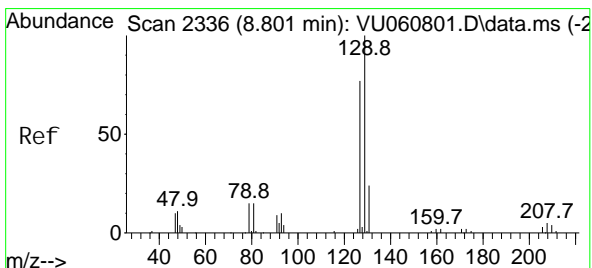
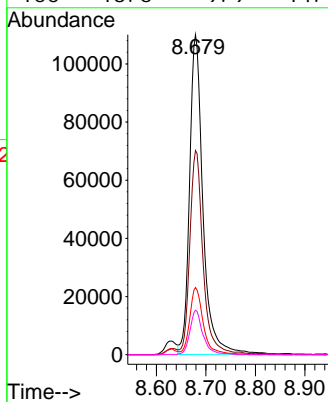
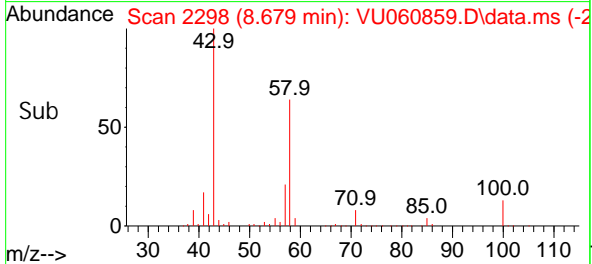


#48
 2-Hexanone
 Concen: 53.253 ug/L
 RT: 8.679 min Scan# 2297
 Delta R.T. -0.000 min
 Lab File: VU060859.D
 Acq: 18 Sep 2024 10:03

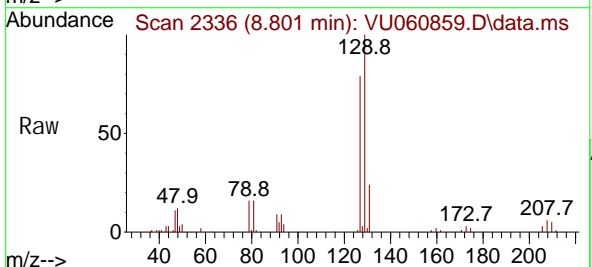
Instrument : MSVOA_U
 ClientSampleId :



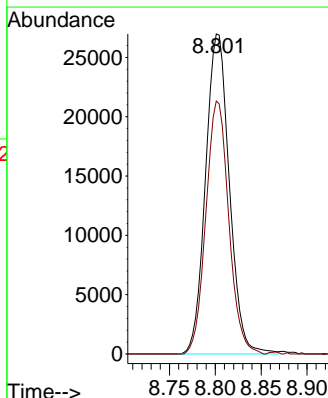
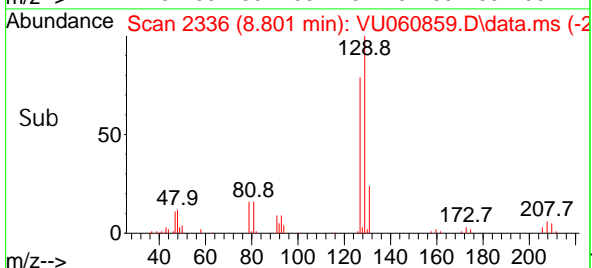
Tgt Ion: 43 Resp: 207445
 Ion Ratio Lower Upper
 43 100
 58 60.8 48.3 72.5
 57 21.4 15.9 23.9
 100 13.5 9.9 14.9

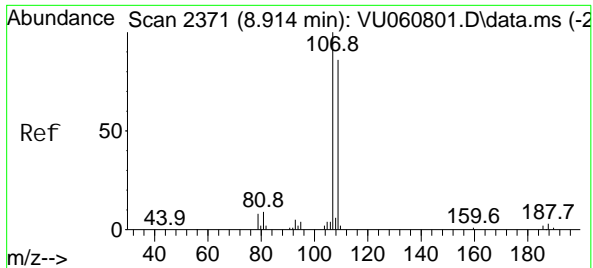


#49
 Di bromochloromethane
 Concen: 5.180 ug/L
 RT: 8.801 min Scan# 2336
 Delta R.T. -0.000 min
 Lab File: VU060859.D
 Acq: 18 Sep 2024 10:03



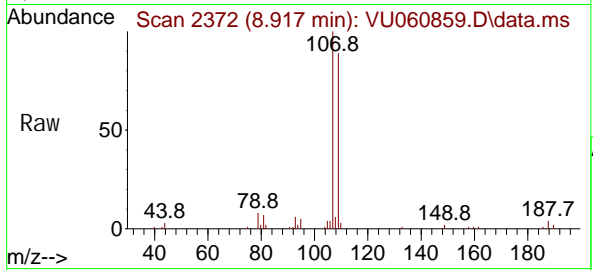
Tgt Ion: 129 Resp: 48722
 Ion Ratio Lower Upper
 129 100
 127 79.0 56.1 104.1



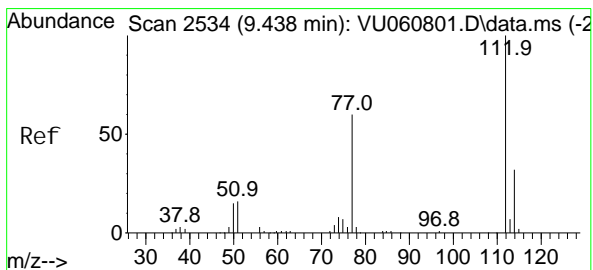
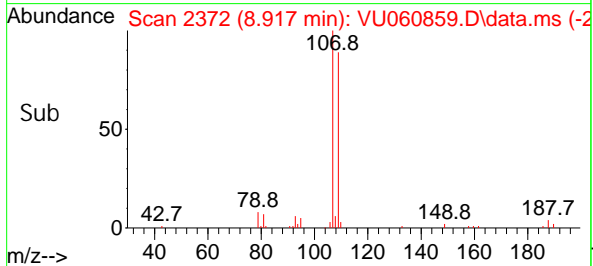
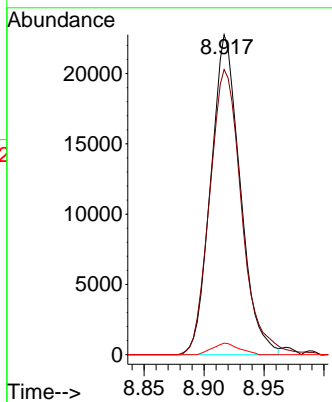


#50
 1, 2-Di bromoethane
 Concen: 5.256 ug/L
 RT: 8.917 min Scan# 21
 Delta R.T. -0.000 min
 Lab File: VU060859.D
 Acq: 18 Sep 2024 10:03

Instrument :
 MSVOA_U
 ClientSampleId :

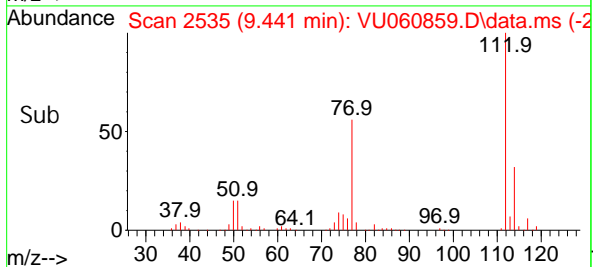
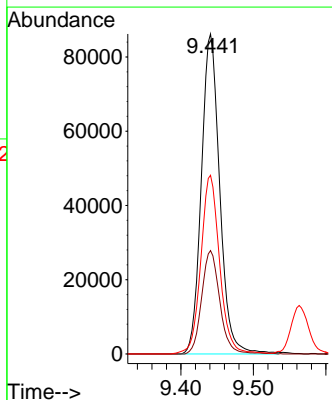
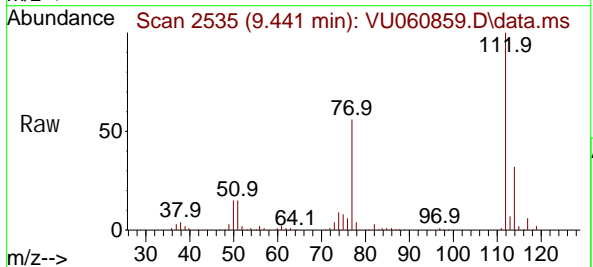


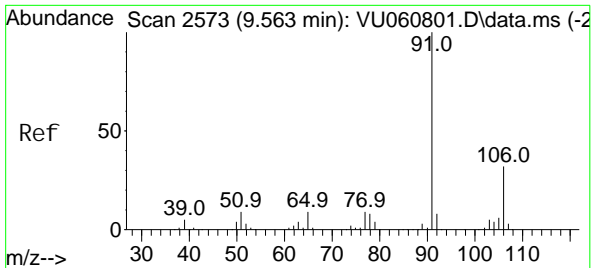
Tgt Ion: 107 Resp: 38757
 Ion Ratio Lower Upper
 107 100
 109 89.1 66.8 124.0
 188 3.6 3.4 5.0



#51
 Chlorobenzene
 Concen: 5.209 ug/L
 RT: 9.441 min Scan# 2535
 Delta R.T. 0.003 min
 Lab File: VU060859.D
 Acq: 18 Sep 2024 10:03

Tgt Ion: 112 Resp: 151891
 Ion Ratio Lower Upper
 112 100
 114 32.3 22.2 41.2
 77 55.8 46.1 69.1

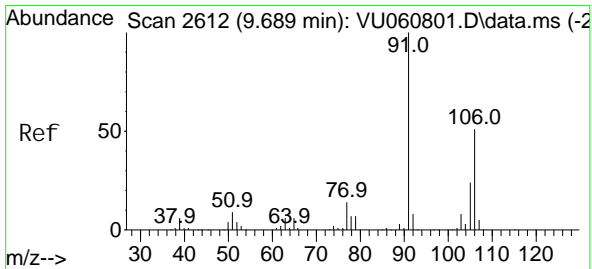
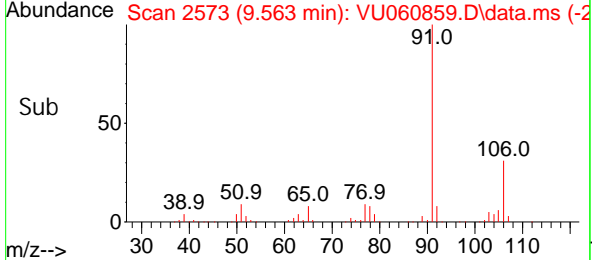
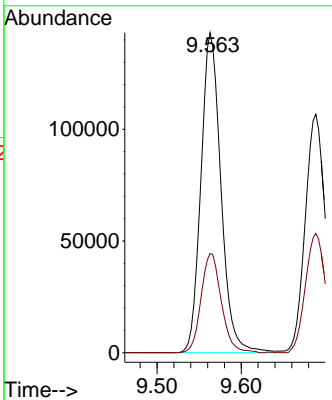
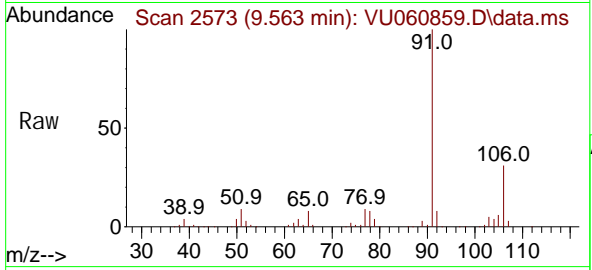




#52
 Ethyl benzene
 Concen: 5.179 ug/L
 RT: 9.563 min Scan# 2573
 Delta R.T. -0.000 min
 Lab File: VU060859.D
 Acq: 18 Sep 2024 10:03

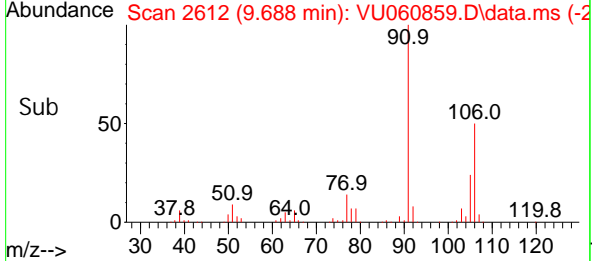
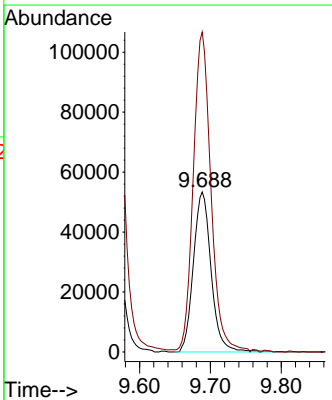
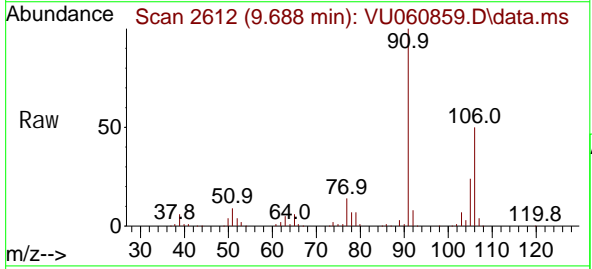
Instrument : MSVOA_U
 ClientSampleId :

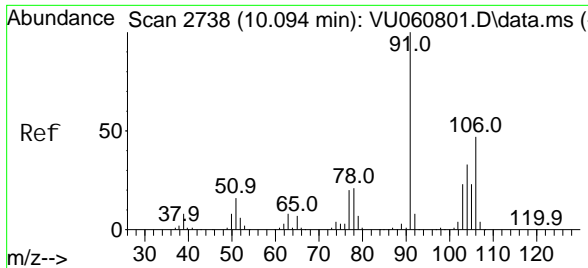
Tgt Ion: 91 Resp: 236781
 Ion Ratio Lower Upper
 91 100
 106 31.0 21.8 40.6



#53
 m, p-Xyl ene
 Concen: 5.353 ug/L
 RT: 9.688 min Scan# 2612
 Delta R.T. 0.003 min
 Lab File: VU060859.D
 Acq: 18 Sep 2024 10:03

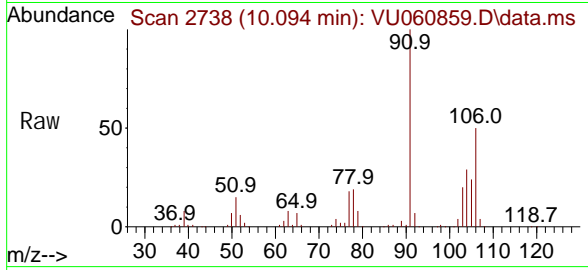
Tgt Ion: 106 Resp: 92798
 Ion Ratio Lower Upper
 106 100
 91 200.1 139.7 259.4



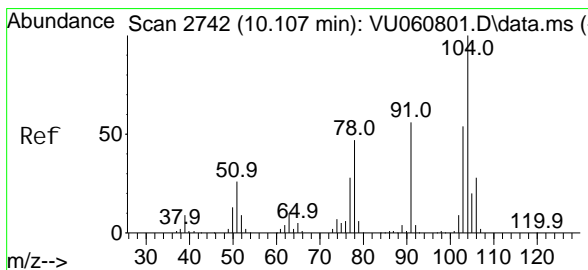
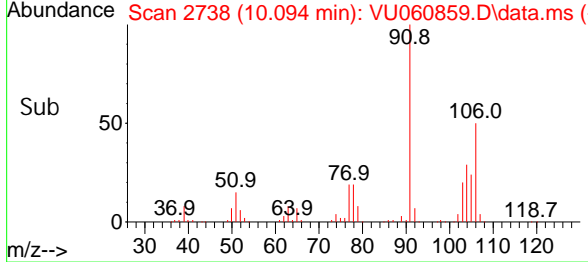
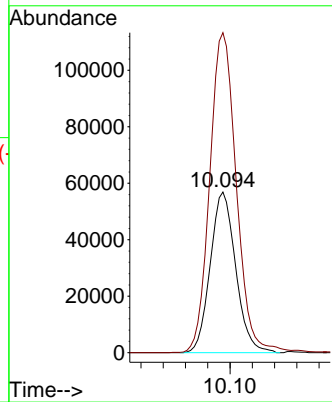


#54
 o-Xyl ene
 Concen: 5.275 ug/L
 RT: 10.094 min Scan# 21
 Delta R.T. -0.000 min
 Lab File: VU060859.D
 Acq: 18 Sep 2024 10:03

Instrument : MSVOA_U
 ClientSampleId :

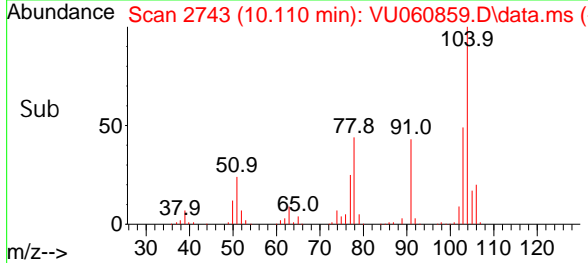
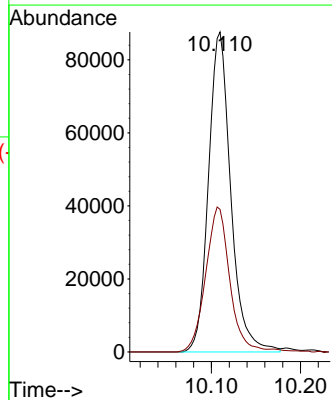
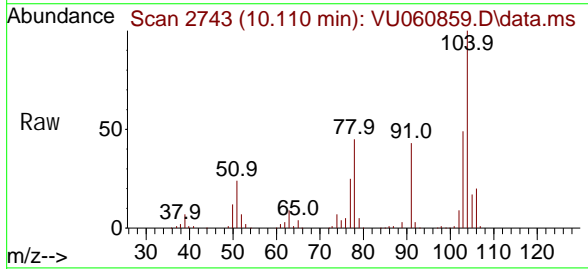


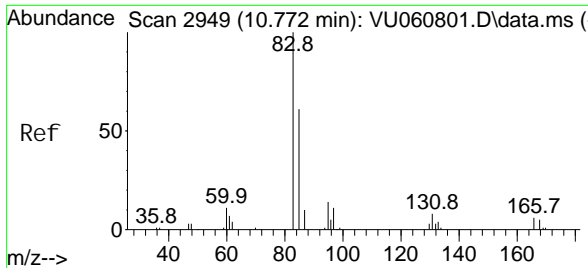
Tgt Ion: 106 Resp: 90229
 Ion Ratio Lower Upper
 106 100
 91 199.2 148.6 276.0



#55
 Styrene
 Concen: 5.279 ug/L
 RT: 10.110 min Scan# 2743
 Delta R.T. 0.003 min
 Lab File: VU060859.D
 Acq: 18 Sep 2024 10:03

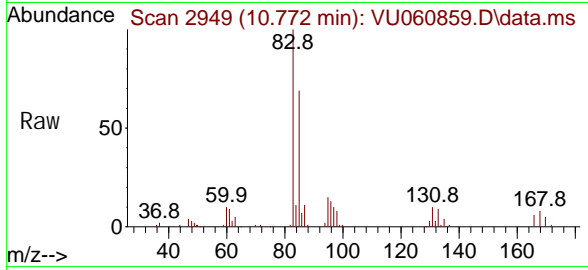
Tgt Ion: 104 Resp: 152218
 Ion Ratio Lower Upper
 104 100
 78 44.6 31.7 58.9



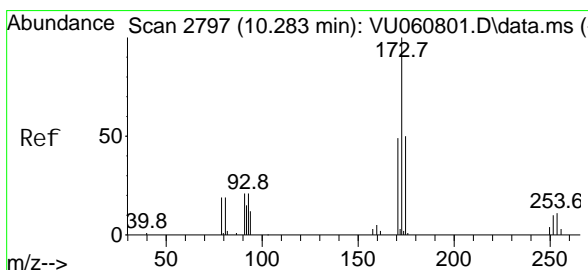
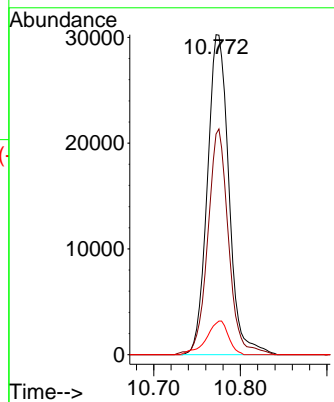
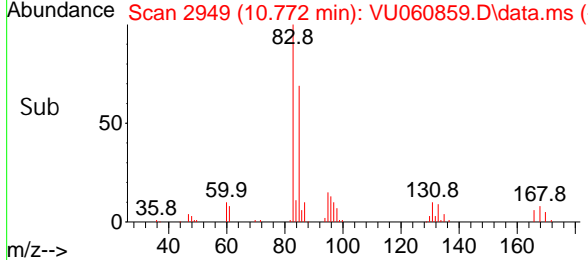


#57
 1, 1, 2, 2-Tetrachloroethane
 Concen: 5.069 ug/L
 RT: 10.772 min Scan# 2949
 Delta R.T. -0.000 min
 Lab File: VU060859.D
 Acq: 18 Sep 2024 10:03

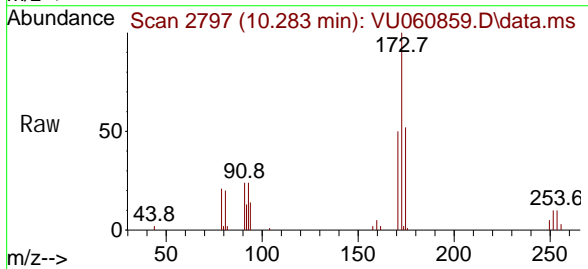
Instrument : MSVOA_U
 ClientSampleId :



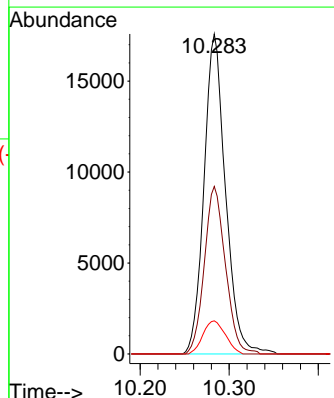
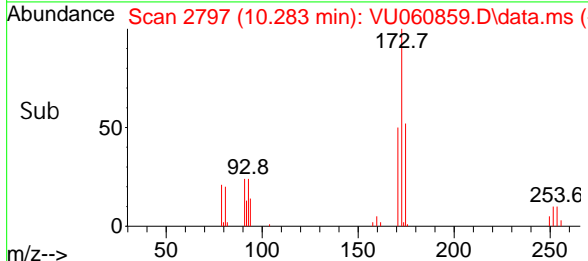
Tgt Ion: 83 Resp: 52234
 Ion Ratio Lower Upper
 83 100
 85 69.0 42.9 79.7
 131 9.7 8.4 12.6

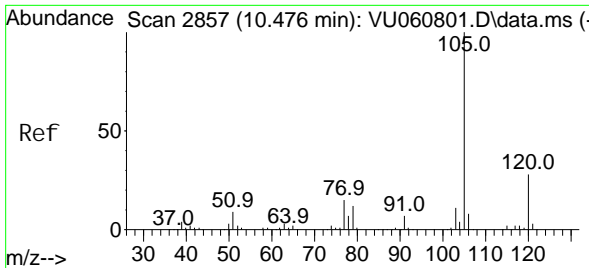


#59
 Bromoform
 Concen: 5.180 ug/L
 RT: 10.283 min Scan# 2797
 Delta R.T. -0.000 min
 Lab File: VU060859.D
 Acq: 18 Sep 2024 10:03



Tgt Ion: 173 Resp: 29445
 Ion Ratio Lower Upper
 173 100
 175 51.3 39.1 58.7
 254 10.8 8.7 13.1



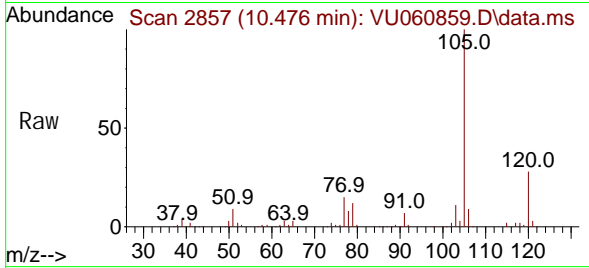


#60
 Isopropyl benzene
 Concen: 5.193 ug/L
 RT: 10.476 min Scan# 2857
 Delta R.T. -0.000 min
 Lab File: VU060859.D
 Acq: 18 Sep 2024 10:03

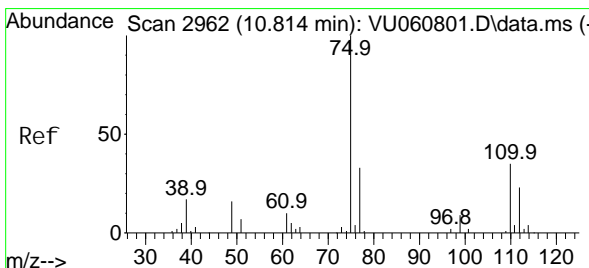
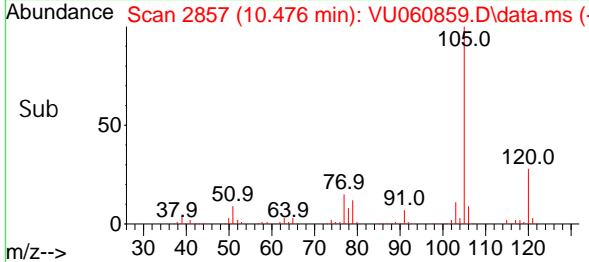
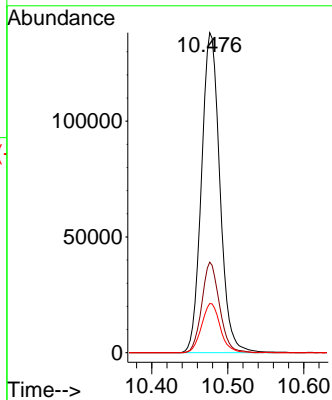
Instrument :

MSVOA_U

ClientSampleId :

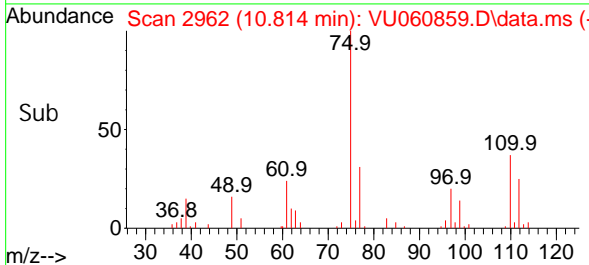
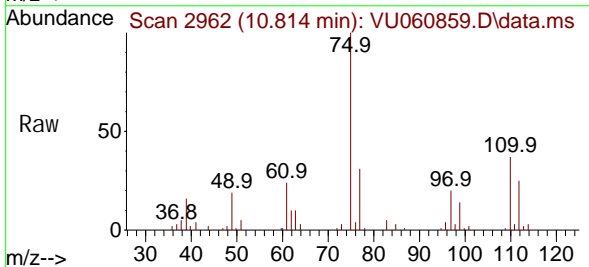
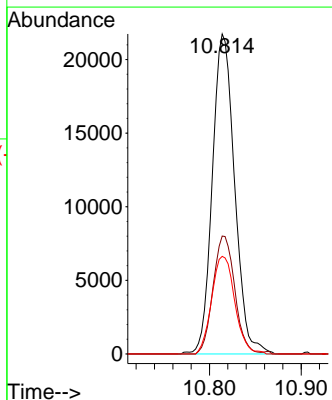


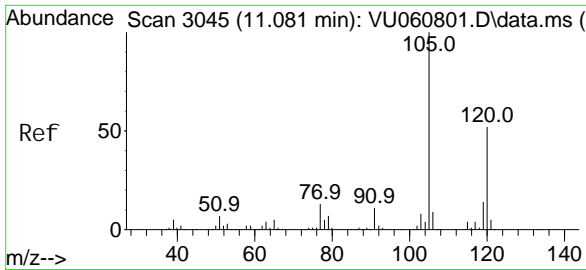
Tgt Ion: 105 Resp: 232118
 Ion Ratio Lower Upper
 105 100
 120 27.3 21.5 32.3
 77 15.6 12.6 18.8



#61
 1,2,3-Tri chloropropane
 Concen: 5.211 ug/L
 RT: 10.814 min Scan# 2962
 Delta R.T. -0.000 min
 Lab File: VU060859.D
 Acq: 18 Sep 2024 10:03

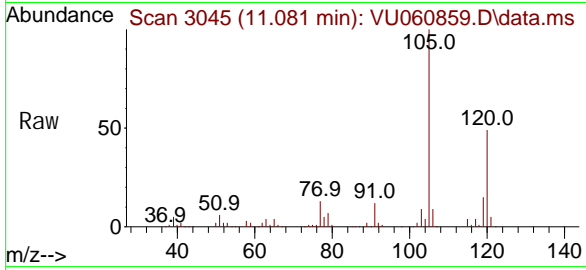
Tgt Ion: 75 Resp: 36659
 Ion Ratio Lower Upper
 75 100
 110 35.9 28.6 43.0
 77 31.7 26.3 39.5



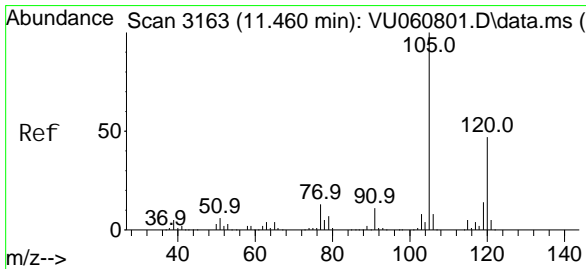
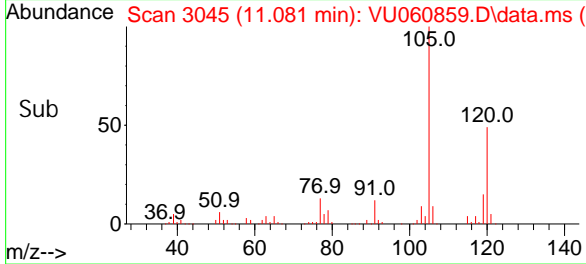
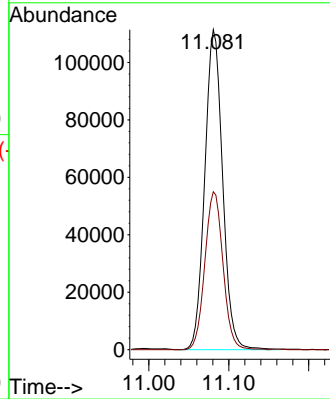


#62
 1, 3, 5-Tri methyl benzene
 Concen: 4.986 ug/L
 RT: 11.081 min Scan# 3045
 Delta R.T. -0.000 min
 Lab File: VU060859.D
 Acq: 18 Sep 2024 10:03

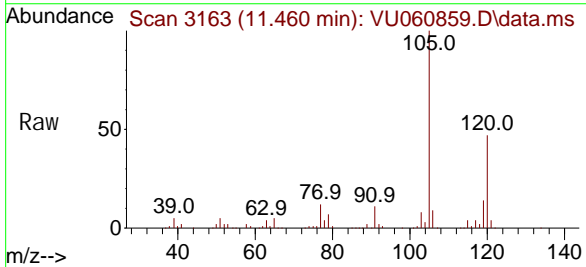
Instrument : MSVOA_U
 ClientSampleId :



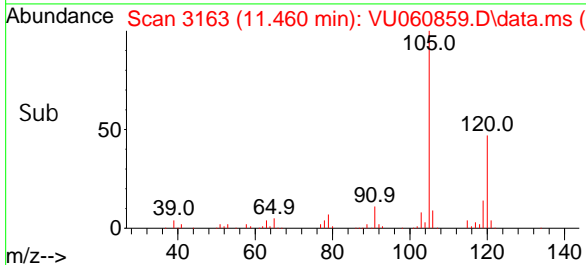
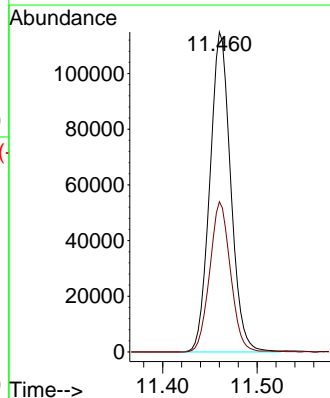
Tgt Ion: 105 Resp: 173203
 Ion Ratio Lower Upper
 105 100
 120 50.1 38.5 57.7

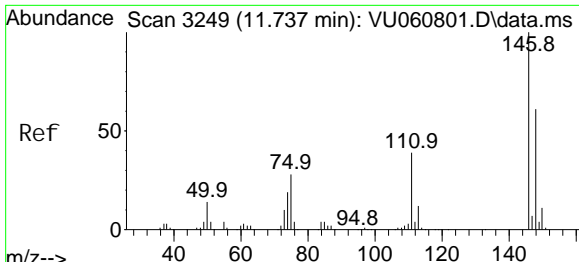


#63
 1, 2, 4-Tri methyl benzene
 Concen: 5.128 ug/L
 RT: 11.460 min Scan# 3163
 Delta R.T. -0.000 min
 Lab File: VU060859.D
 Acq: 18 Sep 2024 10:03



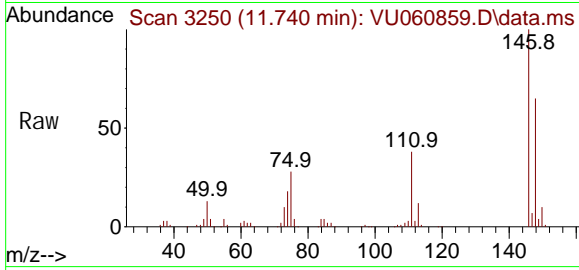
Tgt Ion: 105 Resp: 176041
 Ion Ratio Lower Upper
 105 100
 120 46.6 36.1 54.1



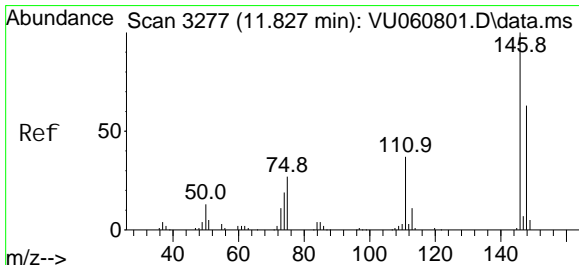
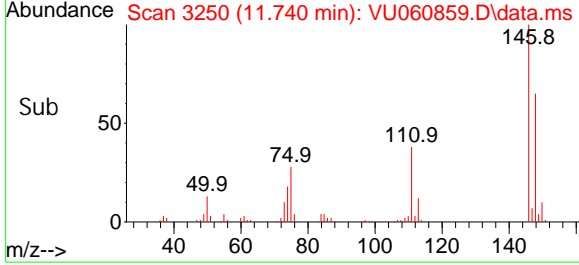
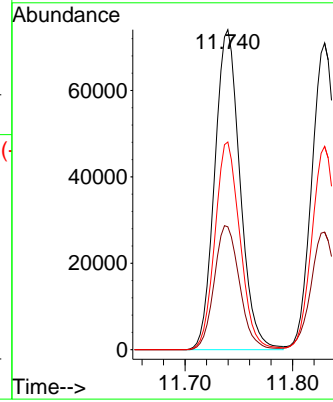


#64
 1, 3-Di chl orobenzene
 Concen: 5.396 ug/L
 RT: 11.740 min Scan# 31
 Del ta R. T. 0.003 min
 Lab File: VU060859.D
 Acq: 18 Sep 2024 10:03

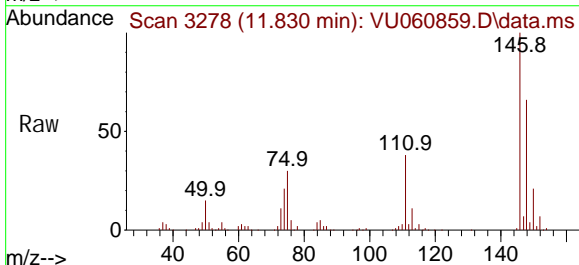
Instrument :
 MSVOA_U
 ClientSampleId :



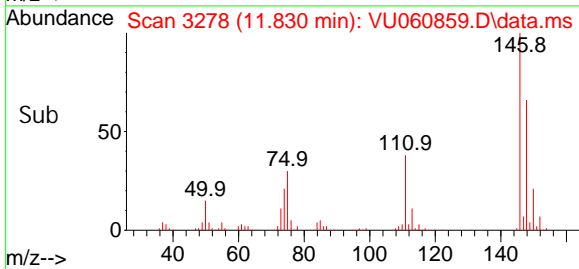
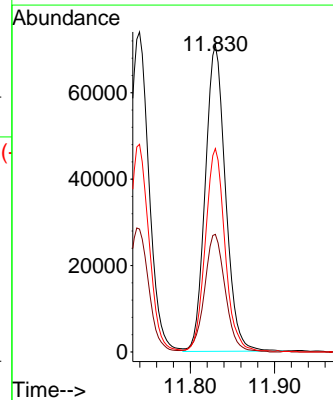
Tgt Ion: 146 Resp: 121272
 Ion Ratio Lower Upper
 146 100
 111 38.4 27.5 51.1
 148 64.9 43.7 81.1

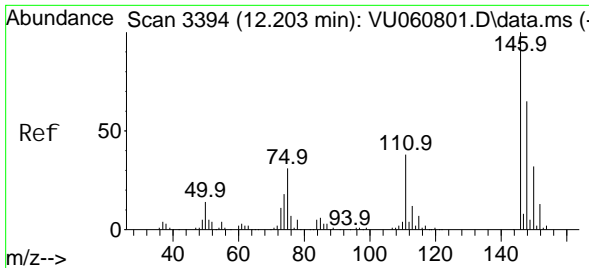


#65
 1, 4-Di chl orobenzene
 Concen: 5.107 ug/L
 RT: 11.830 min Scan# 3278
 Del ta R. T. -0.000 min
 Lab File: VU060859.D
 Acq: 18 Sep 2024 10:03



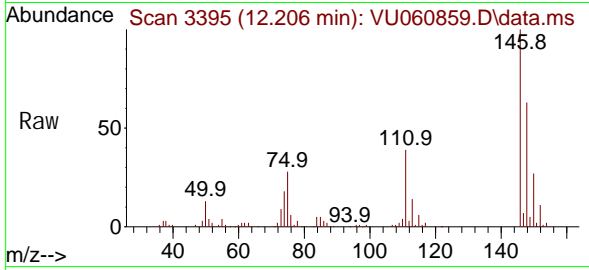
Tgt Ion: 146 Resp: 118658
 Ion Ratio Lower Upper
 146 100
 111 38.3 26.3 48.9
 148 66.3 45.3 84.1



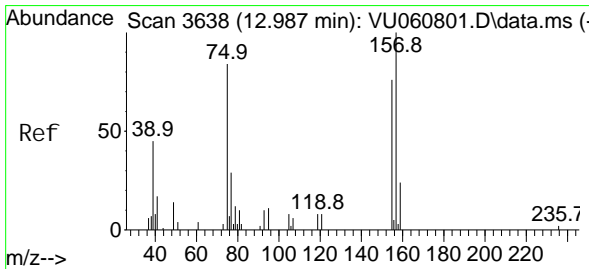
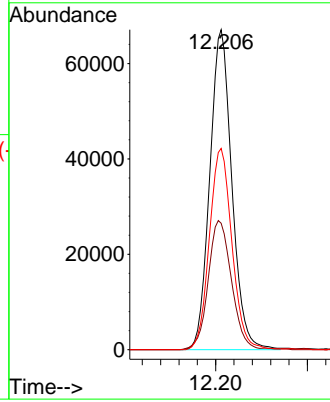
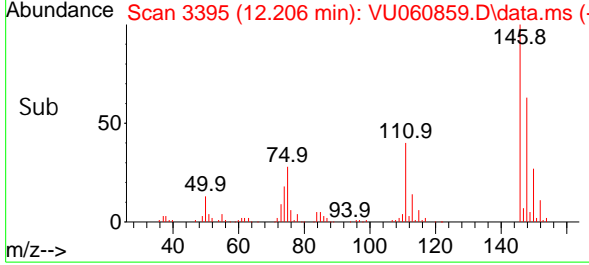


#67
 1, 2-Di chl orobenzene
 Concen: 5.270 ug/L
 RT: 12.206 min Scan# 31
 Del ta R. T. 0.003 min
 Lab File: VU060859.D
 Acq: 18 Sep 2024 10: 03

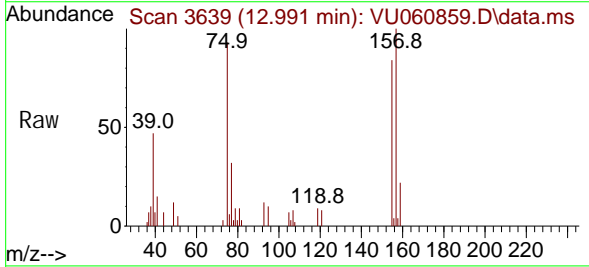
Instrument :
 MSVOA_U
 ClientSampleId :



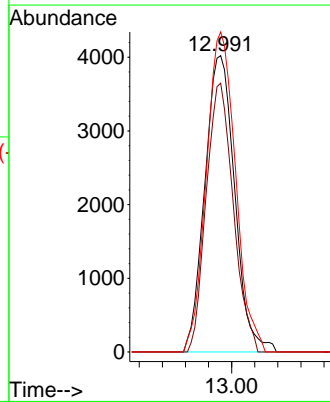
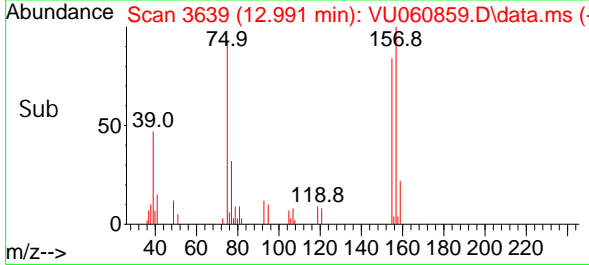
Tgt Ion: 146 Resp: 111988
 Ion Ratio Lower Upper
 146 100
 111 39.5 33.4 50.0
 148 62.9 50.9 76.3

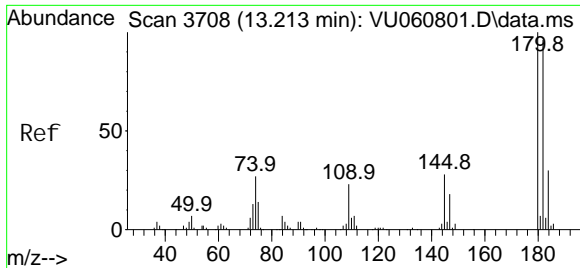


#68
 1, 2-Di bromo-3- chl oropropane
 Concen: 5.264 ug/L
 RT: 12.991 min Scan# 3639
 Del ta R. T. -0.000 min
 Lab File: VU060859.D
 Acq: 18 Sep 2024 10: 03



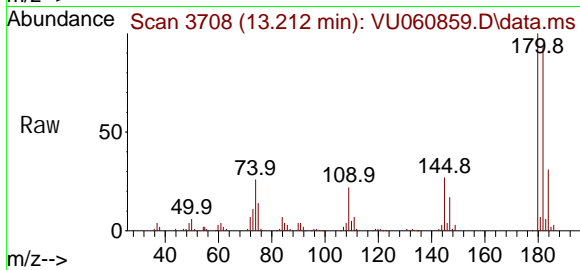
Tgt Ion: 75 Resp: 7232
 Ion Ratio Lower Upper
 75 100
 155 90.7 73.1 109.7
 157 108.0 91.0 136.4





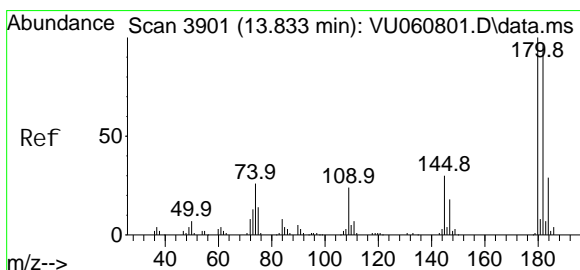
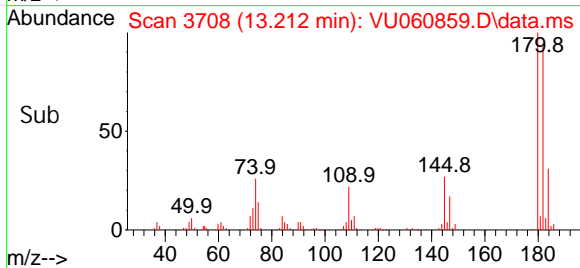
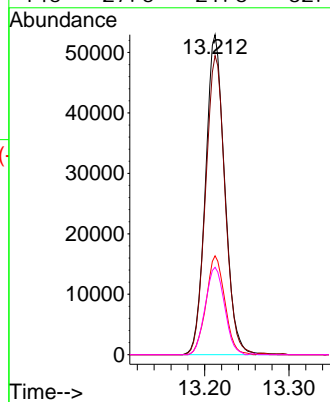
#69
 1, 3, 5-Tri chlorobenzene
 Concen: 4.991 ug/L
 RT: 13.212 min Scan# 31
 Delta R.T. -0.000 min
 Lab File: VU060859.D
 Acq: 18 Sep 2024 10:03

Instrument :
 MSVOA_U
 ClientSampleId :



Tgt Ion: 180 Resp: 83919

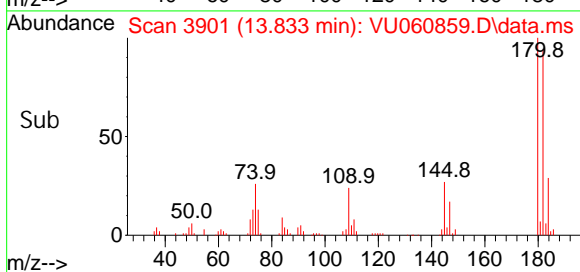
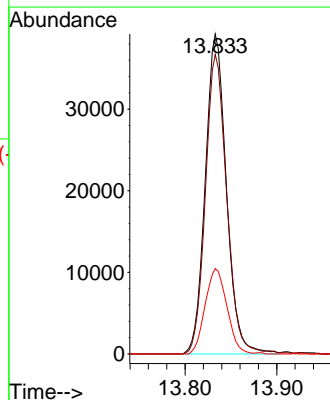
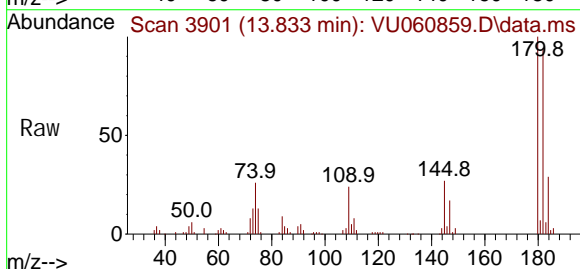
Ion	Ratio	Lower	Upper
180	100		
182	94.7	74.5	111.7
184	30.1	23.2	34.8
145	27.5	21.6	32.4

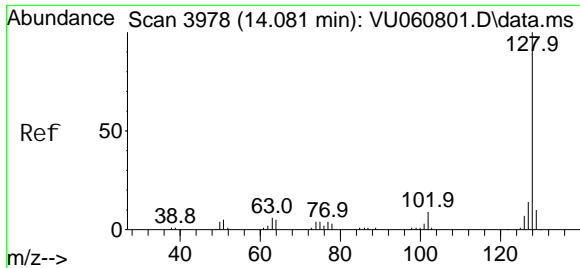


#70
 1, 2, 4-tri chlorobenzene
 Concen: 5.306 ug/L
 RT: 13.833 min Scan# 3901
 Delta R.T. -0.000 min
 Lab File: VU060859.D
 Acq: 18 Sep 2024 10:03

Tgt Ion: 180 Resp: 62839

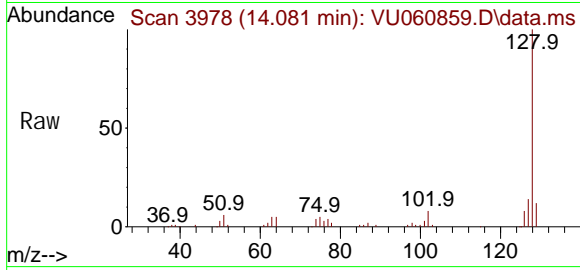
Ion	Ratio	Lower	Upper
180	100		
182	93.7	77.4	116.2
145	27.4	22.9	34.3



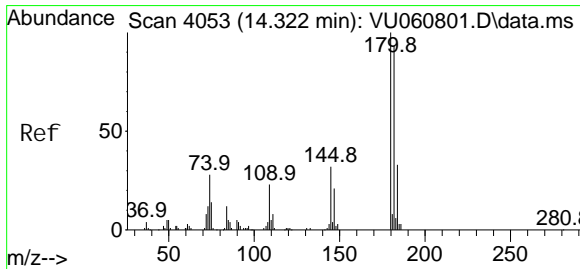
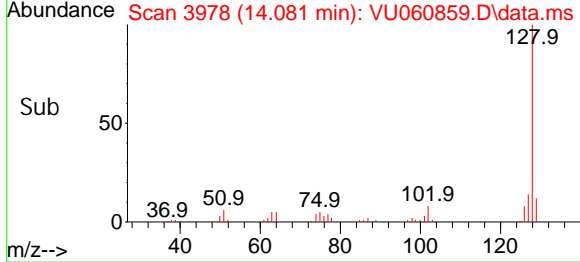
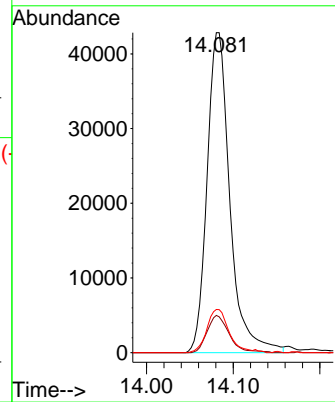


#71
 Naphthalene
 Concen: 5.021 ug/L
 RT: 14.081 min Scan# 3978
 Delta R.T. -0.003 min
 Lab File: VU060859.D
 Acq: 18 Sep 2024 10:03

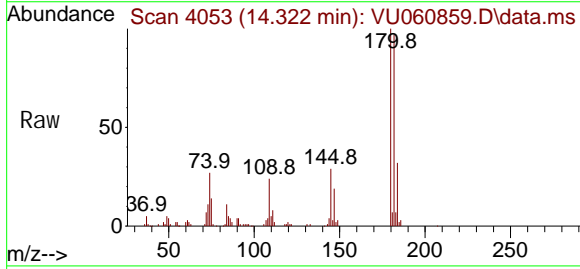
Instrument : MSVOA_U
 ClientSampleId :



Tgt Ion: 128 Resp: 78433
 Ion Ratio Lower Upper
 128 100
 129 11.3 8.3 12.5
 127 13.3 10.7 16.1



#72
 1,2,3-Trichlorobenzene
 Concen: 5.469 ug/L
 RT: 14.322 min Scan# 4053
 Delta R.T. -0.000 min
 Lab File: VU060859.D
 Acq: 18 Sep 2024 10:03



Tgt Ion: 180 Resp: 55958
 Ion Ratio Lower Upper
 180 100
 182 95.4 75.7 113.5
 145 30.7 23.5 35.3

