

Data Path : Z:\voasrv\HPCHEM1\MSVOA_U\Data\VU091924\
 Data File : VU060890.D
 Acq On : 19 Sep 2024 11:58
 Operator : MD/SY
 Sample : P3952-12
 Misc : 25.0mL/MSVOA_U/WATER
 ALS Vial : 6 Sample Multiplier: 1

Instrument :
 MSVOA_U
 ClientSampleId :

Quant Time: Sep 19 23:55:48 2024
 Quant Method : Z:\voasrv\HPCHEM1\MSVOA_U\Method\SFAMUTR091624WMA.M
 Quant Title : TRACE VOA SFAM1.0
 QLast Update : Thu Sep 19 23:54:48 2024
 Response via : Initial Calibration

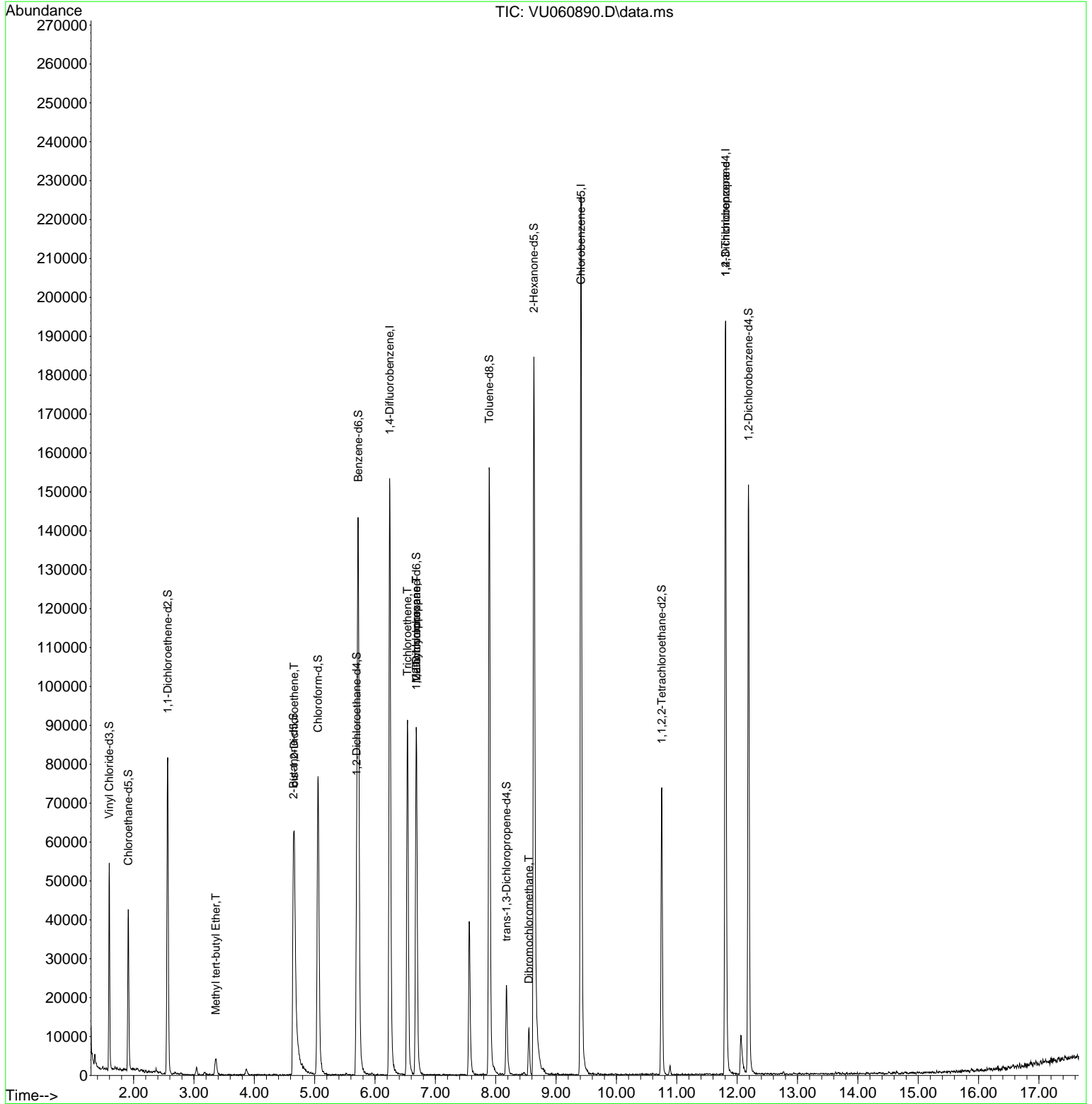
Compound	R.T.	QI on	Response	Conc	Units	Dev(Min)
Internal Standards						
1) 1,4-Difluorobenzene	6.242	114	134636	5.000	ug/L	0.00
28) Chlorobenzene-d5	9.412	117	142576	5.000	ug/L	0.00
58) 1,4-Dichlorobenzene-d4	11.807	152	59311	5.000	ug/L	0.00
System Monitoring Compounds						
4) Vinyl Chloride-d3	1.596	65	35604	2.940	ug/L	0.00
Spike Amount	5.000	Range	40 - 130	Recovery	=	58.800%
7) Chloroethane-d5	1.911	69	31951	3.706	ug/L	0.00
Spike Amount	5.000	Range	65 - 130	Recovery	=	74.200%
11) 1,1-Dichloroethane-d2	2.563	65	14964	3.486	ug/L	0.00
Spike Amount	5.000	Range	60 - 125	Recovery	=	69.800%
20) 2-Butanone-d5	4.647	46	87332	44.923	ug/L	0.00
Spike Amount	50.000	Range	40 - 130	Recovery	=	89.840%
24) Chloroform-d	5.055	84	77605	4.192	ug/L	0.00
Spike Amount	5.000	Range	70 - 125	Recovery	=	83.800%
26) 1,2-Dichloroethane-d4	5.695	65	39447	4.458	ug/L	0.00
Spike Amount	5.000	Range	70 - 130	Recovery	=	89.200%
32) Benzene-d6	5.721	84	141183	3.695	ug/L	0.00
Spike Amount	5.000	Range	70 - 125	Recovery	=	73.800%
36) 1,2-Dichloropropane-d6	6.682	67	47975	4.058	ug/L	0.00
Spike Amount	5.000	Range	60 - 140	Recovery	=	81.200%
41) Toluene-d8	7.891	98	119300	3.424	ug/L	0.00
Spike Amount	5.000	Range	70 - 130	Recovery	=	68.400%#
43) trans-1,3-Dichloroprop...	8.177	79	15631	3.673	ug/L	0.00
Spike Amount	5.000	Range	55 - 130	Recovery	=	73.400%
46) 2-Hexanone-d5	8.631	63	69473	41.381	ug/L	0.00
Spike Amount	50.000	Range	45 - 130	Recovery	=	82.760%
56) 1,1,2,2-Tetrachloroeth...	10.750	84	38393	4.145	ug/L	0.00
Spike Amount	5.000	Range	65 - 120	Recovery	=	82.800%
66) 1,2-Dichlorobenzene-d4	12.187	152	44238	4.439	ug/L	0.00
Spike Amount	5.000	Range	80 - 120	Recovery	=	88.800%
Target Compounds						
17) Methyl tert-butyl Ether	3.361	73	5580	0.292	ug/L #	87
22) cis-1,2-Dichloroethene	4.660	96	15049	1.549	ug/L	91
34) Trichloroethene	6.538	95	32490	3.161	ug/L	91
35) Methyl cyclohexane	6.682	83	11386	0.808	ug/L #	20
37) 1,2-Dichloropropane	6.685	63	4774	0.442	ug/L #	93
49) Dibromochloromethane	8.550	129	2654	0.299	ug/L #	9
61) 1,2,3-Trichloropropane	11.807	75	6282	1.136	ug/L #	67

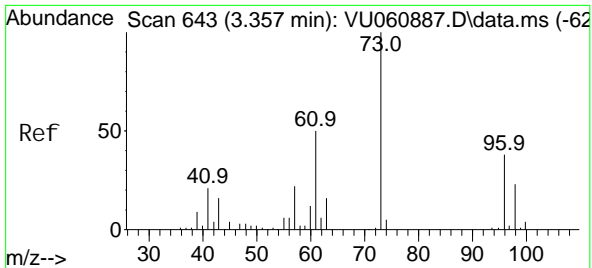
(#) = qualifier out of range (m) = manual integration (+) = signals summed

Data Path : Z:\voasrv\HPCHEM1\MSVOA_U\Data\VU091924\
 Data File : VU060890.D
 Acq On : 19 Sep 2024 11:58
 Operator : MD/SY
 Sample : P3952-12
 Misc : 25.0mL/MSVOA_U/WATER
 ALS Vial : 6 Sample Multiplier: 1

Instrument :
 MSVOA_U
 ClientSampleId :

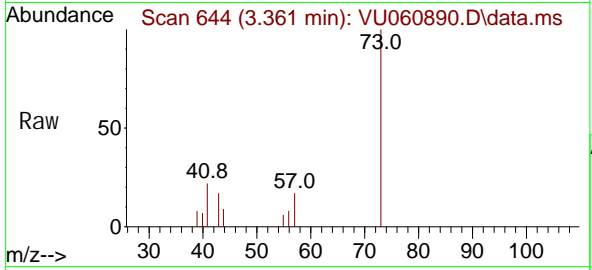
Quant Time: Sep 19 23:55:48 2024
 Quant Method : Z:\voasrv\HPCHEM1\MSVOA_U\Method\SFAMUTR091624WMA.M
 Quant Title : TRACE VOA SFAM1.0
 QLast Update : Thu Sep 19 23:54:48 2024
 Response via : Initial Calibration



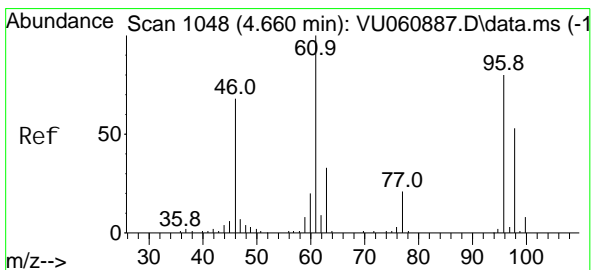
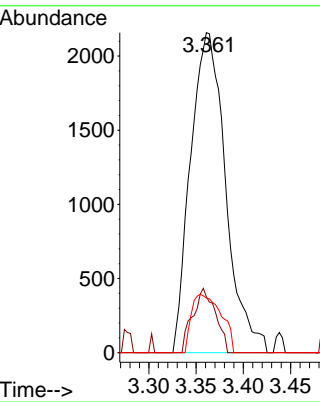
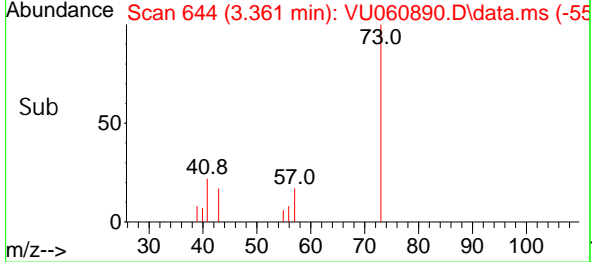


#17
 Methyl tert-butyl Ether
 Concen: 0.292 ug/L
 RT: 3.361 min Scan# 64
 Delta R.T. 0.003 min
 Lab File: VU060890.D
 Acq: 19 Sep 2024 11:58

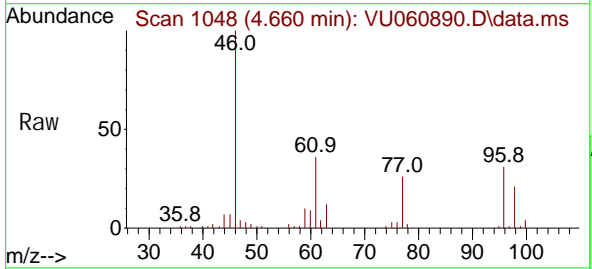
Instrument : MSVOA_U
 ClientSampleId :



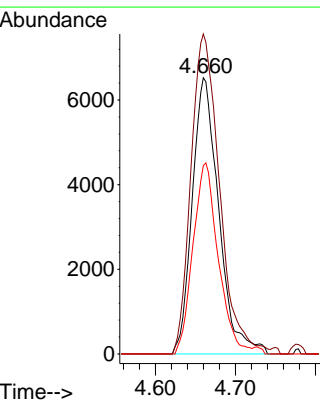
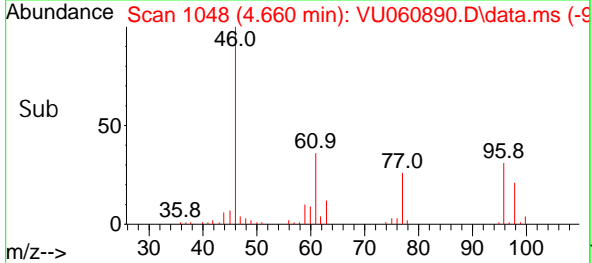
Tgt Ion: 73 Resp: 5580
 Ion Ratio Lower Upper
 73 100
 43 13.0 13.8 20.8#
 57 15.4 18.0 27.0#

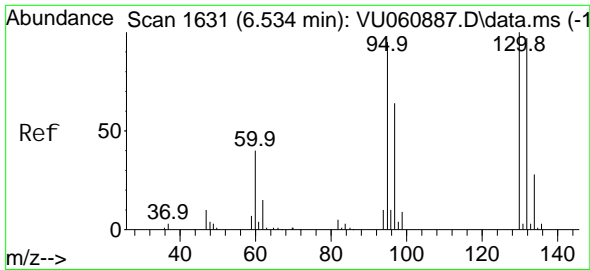


#22
 cis-1,2-Dichloroethene
 Concen: 1.549 ug/L
 RT: 4.660 min Scan# 1048
 Delta R.T. 0.000 min
 Lab File: VU060890.D
 Acq: 19 Sep 2024 11:58



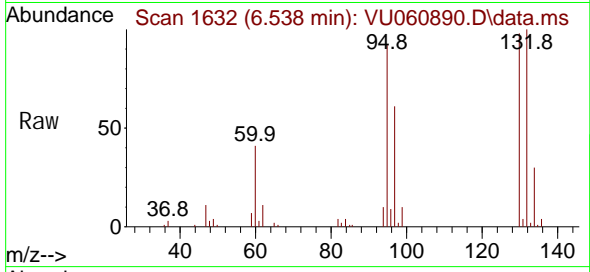
Tgt Ion: 96 Resp: 15049
 Ion Ratio Lower Upper
 96 100
 61 115.9 89.7 166.5
 98 68.2 45.1 83.9



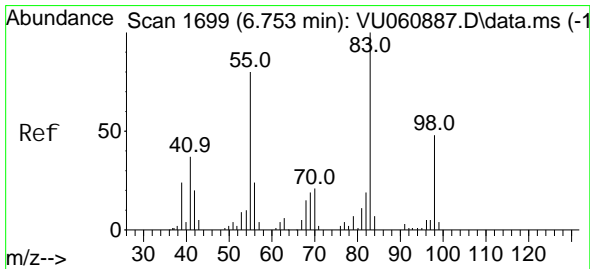
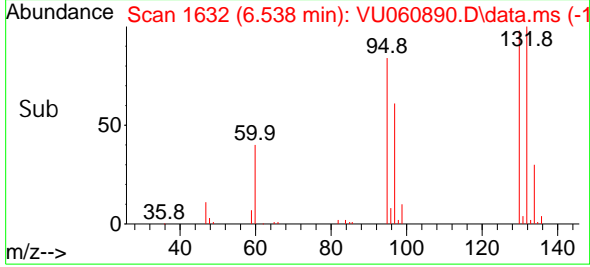
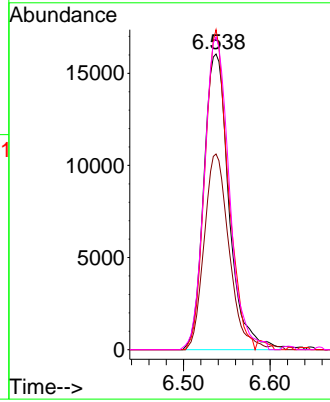


#34
 Trichloroethene
 Concen: 3.161 ug/L
 RT: 6.538 min Scan# 1632
 Delta R.T. 0.003 min
 Lab File: VU060890.D
 Acq: 19 Sep 2024 11:58

Instrument : MSVOA_U
 ClientSampleId :

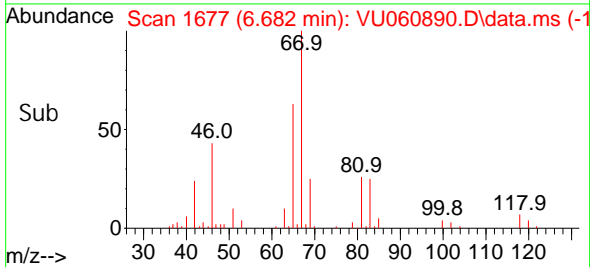
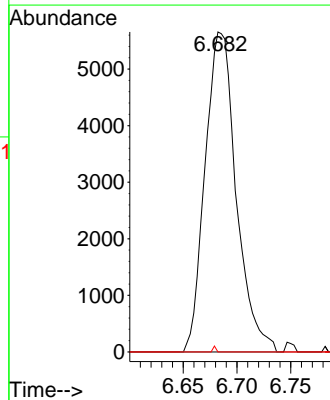
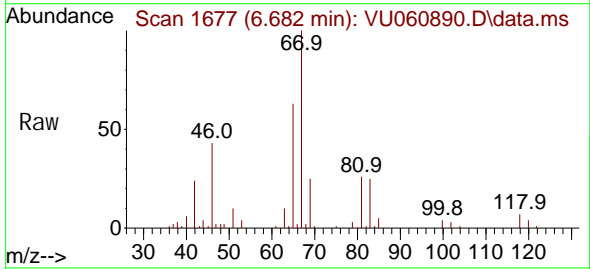


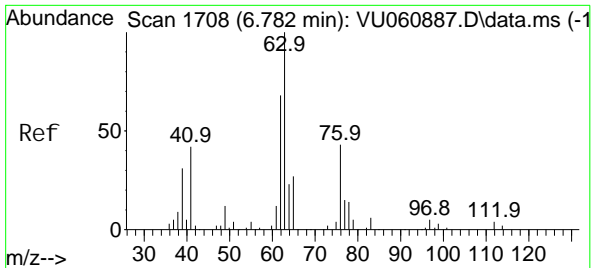
Tgt Ion: 95 Resp: 32490
 Ion Ratio Lower Upper
 95 100
 97 66.2 44.9 83.5
 132 108.3 63.5 117.9
 130 105.8 70.2 130.4



#35
 Methyl cycl ohexane
 Concen: 0.808 ug/L
 RT: 6.682 min Scan# 1677
 Delta R.T. -0.071 min
 Lab File: VU060890.D
 Acq: 19 Sep 2024 11:58

Tgt Ion: 83 Resp: 11386
 Ion Ratio Lower Upper
 83 100
 55 0.0 62.6 94.0#
 98 4.4 37.6 56.4#

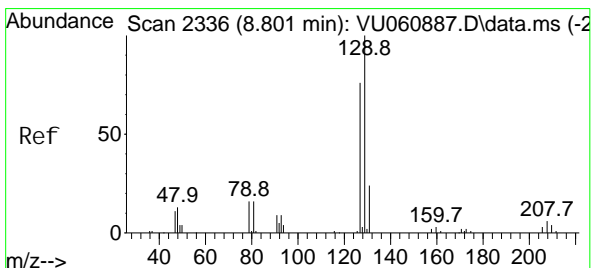
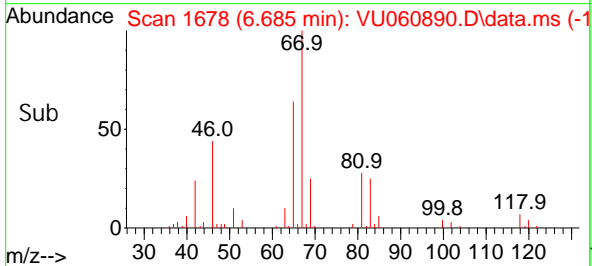
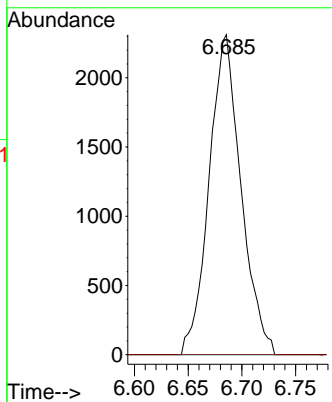
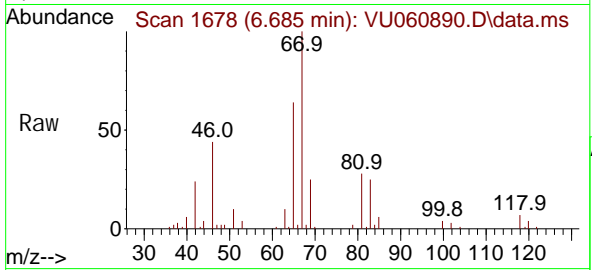




#37
 1, 2-Di chl oropropane
 Concen: 0.442 ug/L
 RT: 6.685 min Scan# 10
 Del ta R. T. -0.096 min
 Lab File: VU060890.D
 Acq: 19 Sep 2024 11:58

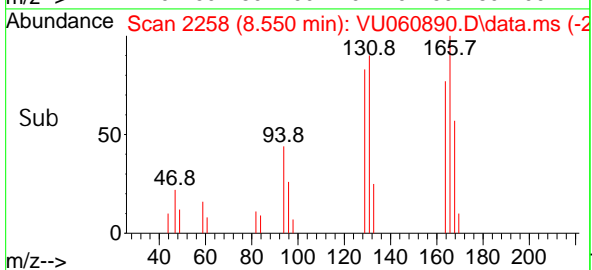
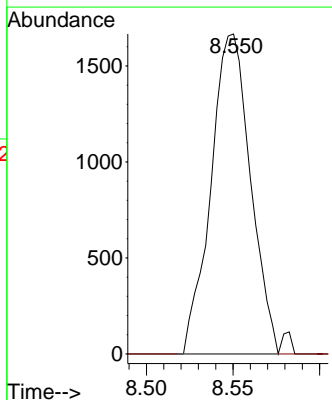
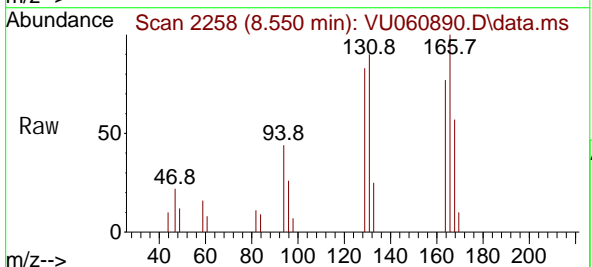
Instrument :
 MSVOA_U
 ClientSampleId :

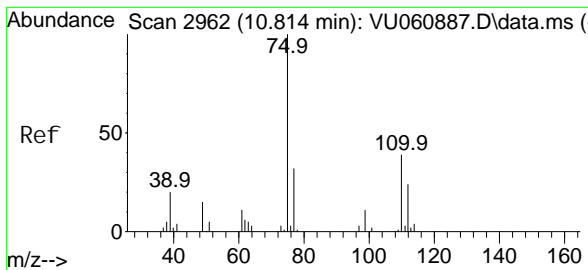
Tgt Ion: 63 Resp: 4774
 Ion Ratio Lower Upper
 63 100
 112 0.0 2.0 3.0#



#49
 Di bromochl oromethane
 Concen: 0.299 ug/L
 RT: 8.550 min Scan# 2258
 Del ta R. T. -0.251 min
 Lab File: VU060890.D
 Acq: 19 Sep 2024 11:58

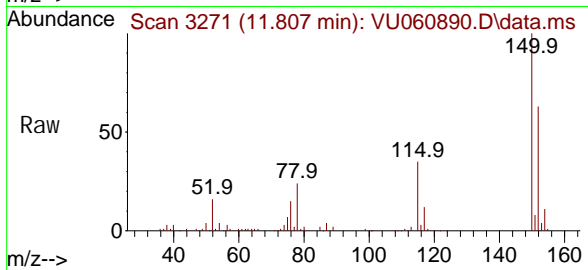
Tgt Ion: 129 Resp: 2654
 Ion Ratio Lower Upper
 129 100
 127 0.0 56.1 104.1#





#61
 1, 2, 3-Tri chl oropropane
 Concen: 1.136 ug/L
 RT: 11.807 min Scan# 31
 Delta R.T. 0.994 min
 Lab File: VU060890.D
 Acq: 19 Sep 2024 11:58

Instrument :
 MSVOA_U
 ClientSampleId :



Tgt Ion: 75 Resp: 6282

Ion	Ratio	Lower	Upper
75	100		
110	1.0	28.6	43.0#
77	35.1	26.3	39.5

