

Data Path : Z:\VOASRV\HPCHEM1\MSVOA U\DATA\VU092018\  
 Data File : VU026910.D  
 Acq On : 19 Sep 2018 20:25  
 Operator : MD/SY  
 Sample : J4934-04  
 Misc : 5.0mL/MSVOA U/WATER  
 ALS Vial : 14 Sample Multiplier: 1

Instrument :  
 MSVOA\_U  
 ClientSampleId :  
 FT-DUP03-20180912

Quant Time: Sep 20 07:16:50 2018  
 Quant Method : Z:\VOASRV\HPCHEM1\MSVOA\_U\METHOD\82U091218W.M  
 Quant Title : SW846 8260  
 QLast Update : Wed Sep 12 05:32:45 2018  
 Response via : Initial Calibration

Internal Standards	R.T.	QIon	Response	Conc	Units	Dev(Min)
1) Pentafluorobenzene	4.99	168	81585	50.00	ug/l	0.00
34) 1,4-Difluorobenzene	5.89	114	137317	50.00	ug/l	0.00
63) Chlorobenzene-d5	9.09	117	139935	50.00	ug/l	0.00
72) 1,4-Dichlorobenzene-d4	11.48	152	75870	50.00	ug/l	0.00

## System Monitoring Compounds

33) 1,2-Dichloroethane-d4	5.31	65	70039	56.59	ug/l	0.00
Spiked Amount				50.000		
			Recovery	=	113.18%	
35) Dibromofluoromethane	4.88	113	62131	55.47	ug/l	0.00
Spiked Amount				50.000		
			Recovery	=	110.94%	
50) Toluene-d8	7.57	98	208219	50.26	ug/l	0.00
Spiked Amount				50.000		
			Recovery	=	100.52%	
62) 4-Bromofluorobenzene	10.31	95	69984	46.61	ug/l	0.00
Spiked Amount				50.000		
			Recovery	=	93.22%	

## Target Compounds

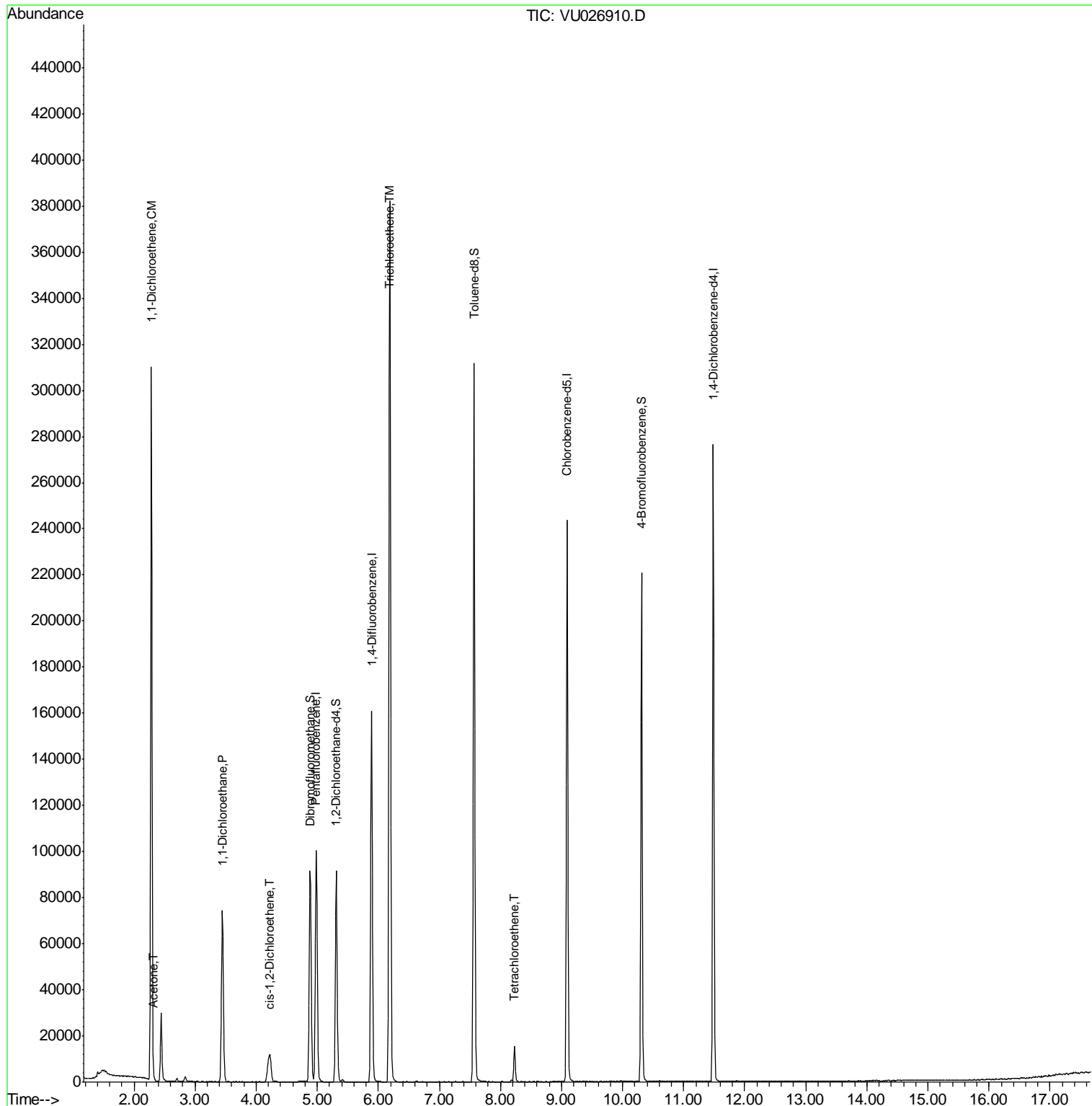
					Qvalue
12) 1,1-Dichloroethene	2.28	96	98994	105.690	ug/l 100
16) Acetone	2.32	43	1600	2.283	ug/l 95
24) 1,1-Dichloroethane	3.45	63	80950	40.759	ug/l 97
27) cis-1,2-Dichloroethene	4.23	96	5715	5.025	ug/l 90
44) Trichloroethene	6.19	130	138814	117.144	ug/l 94
64) Tetrachloroethene	8.23	164	3772	3.387	ug/l 94

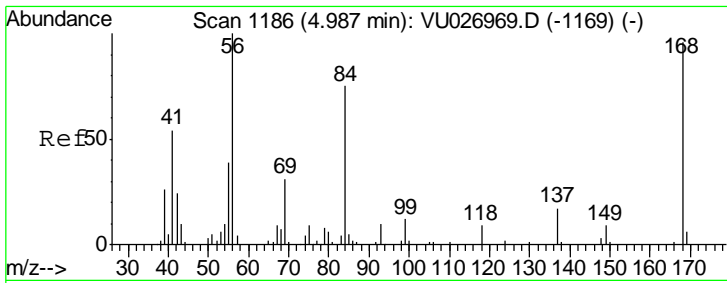
(#) = qualifier out of range (m) = manual integration (+) = signals summed

Data Path : Z:\VOASRV\HPCHEM1\MSVOA U\DATA\VU092018\  
 Data File : VU026910.D  
 Acq On : 19 Sep 2018 20:25  
 Operator : MD/SY  
 Sample : J4934-04  
 Misc : 5.0mL/MSVOA U/WATER  
 ALS Vial : 14 Sample Multiplier: 1

Instrument :  
 MSVOA\_U  
 ClientSampled :  
 FT-DUP03-20180912

Quant Time: Sep 20 07:16:50 2018  
 Quant Method : Z:\VOASRV\HPCHEM1\MSVOA\_U\METHOD\82U091218W.M  
 Quant Title : SW846 8260  
 QLast Update : Wed Sep 12 05:32:45 2018  
 Response via : Initial Calibration

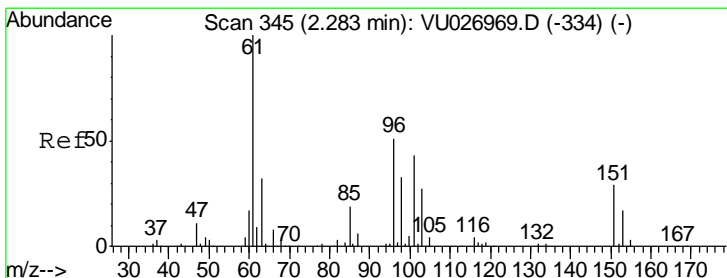
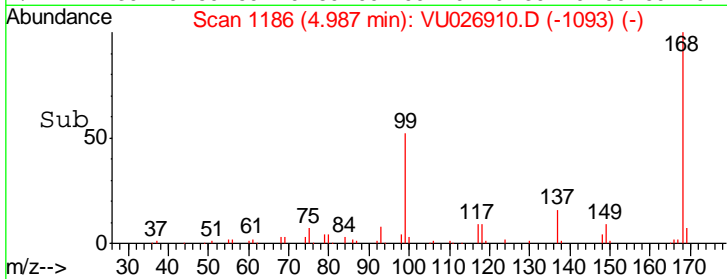
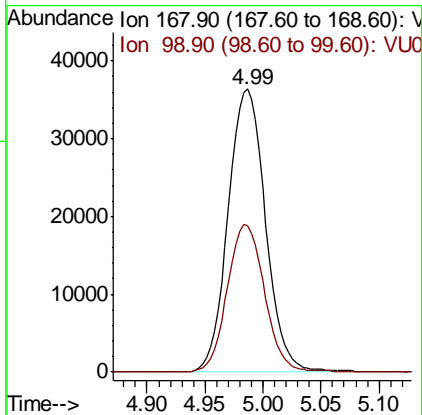
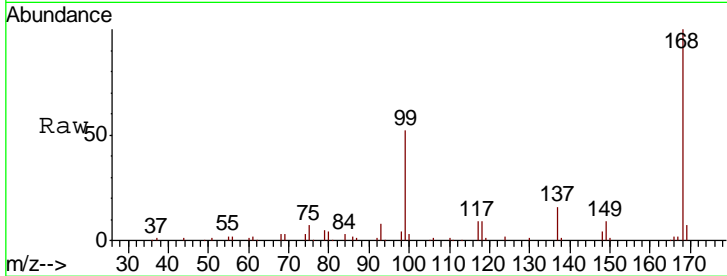




#1  
 Pentafluorobenzene  
 Concen: 50.000 ug/l  
 RT: 4.99 min Scan# 1186  
 Delta R.T. -0.00 min  
 Lab File: VU026910.D  
 Acq: 19 Sep 2018 20:25

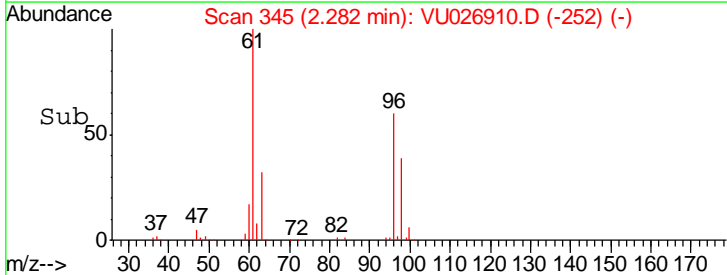
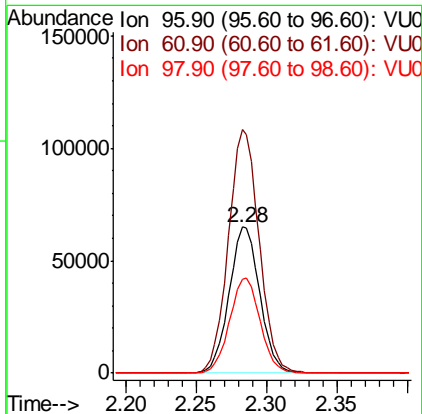
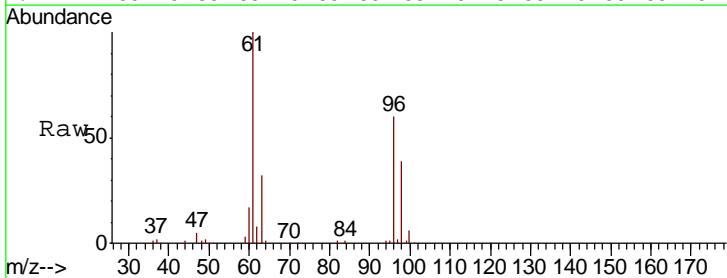
Instrument :  
 MSVOA\_U  
 ClientSampled :  
 FT-DUP03-20180912

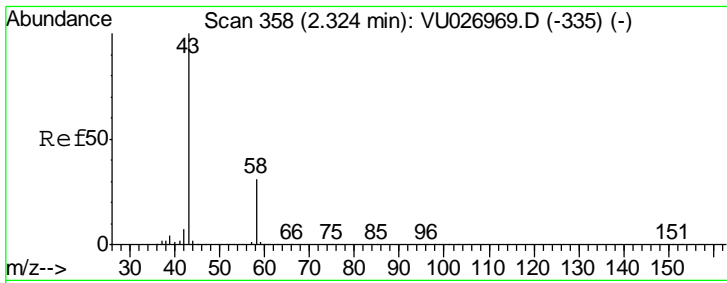
Tgt Ion	Resp	Lower	Upper
168	100		
99	51.5	42.0	63.0



#12  
 1,1-Dichloroethene  
 Concen: 105.690 ug/l  
 RT: 2.28 min Scan# 345  
 Delta R.T. -0.00 min  
 Lab File: VU026910.D  
 Acq: 19 Sep 2018 20:25

Tgt Ion	Resp	Lower	Upper
96	100		
61	166.8	133.0	199.6
98	64.6	51.3	76.9



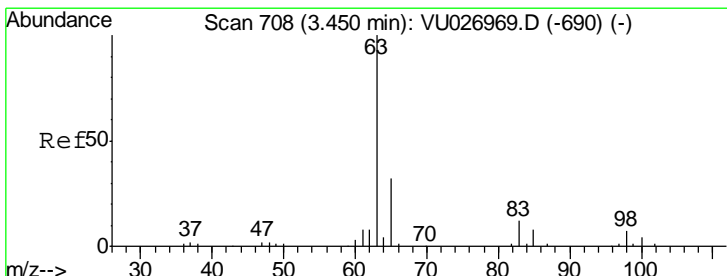
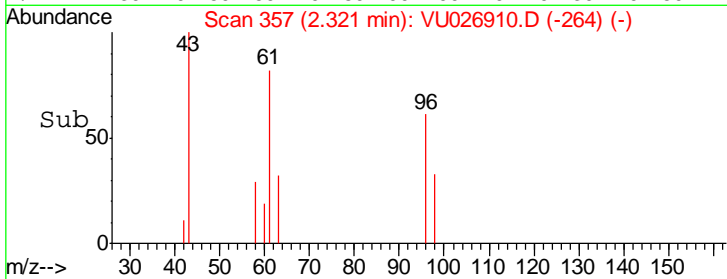
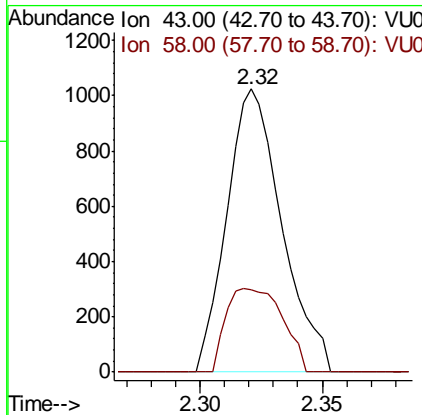
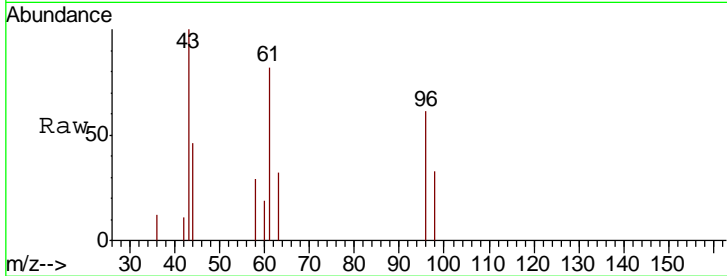


#16  
 Acetone  
 Concen: 2.283 ug/l  
 RT: 2.32 min Scan# 357  
 Delta R.T. -0.00 min  
 Lab File: VU026910.D  
 Acq: 19 Sep 2018 20:25

Instrument : MSVOA\_U  
 ClientSampleId : FT-DUP03-20180912

Tgt Ion: 43 Resp: 1600

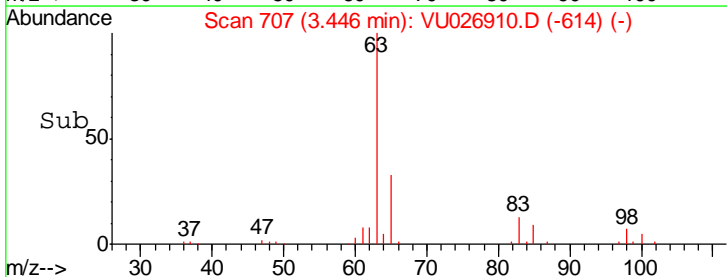
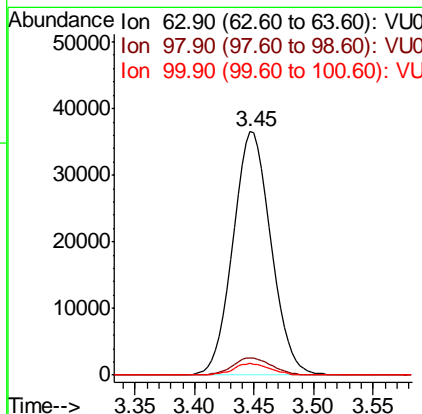
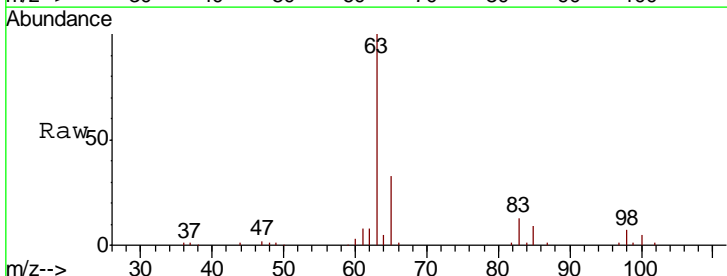
Ion	Ratio	Lower	Upper
43	100		
58	28.9	25.1	37.7

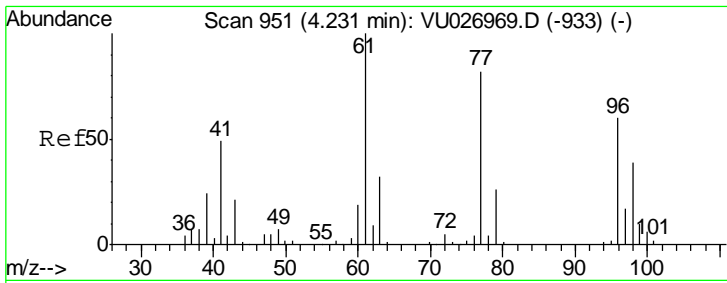


#24  
 1,1-Dichloroethane  
 Concen: 40.759 ug/l  
 RT: 3.45 min Scan# 707  
 Delta R.T. -0.00 min  
 Lab File: VU026910.D  
 Acq: 19 Sep 2018 20:25

Tgt Ion: 63 Resp: 80950

Ion	Ratio	Lower	Upper
63	100		
98	7.2	3.1	9.4
100	4.7	2.0	6.0

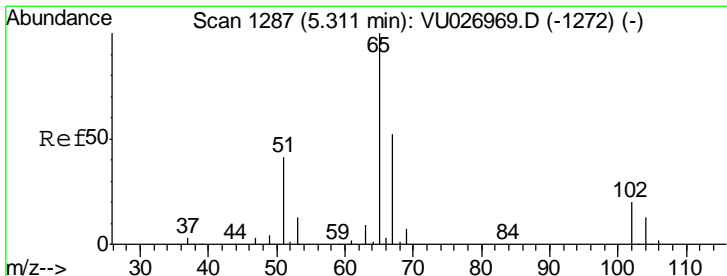
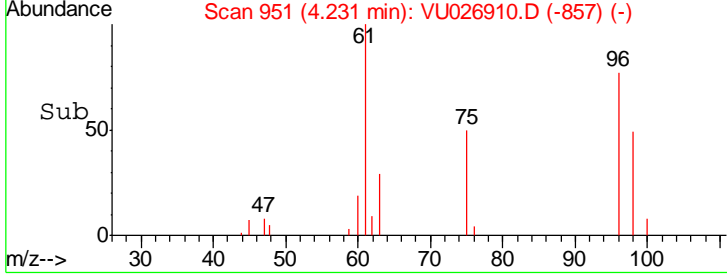
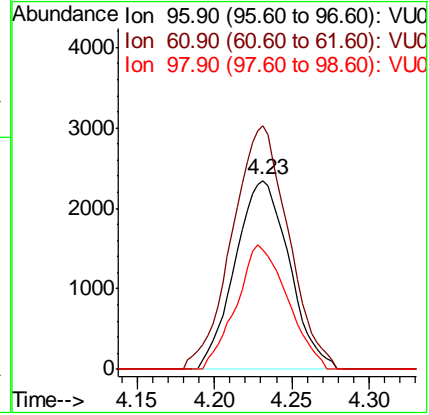
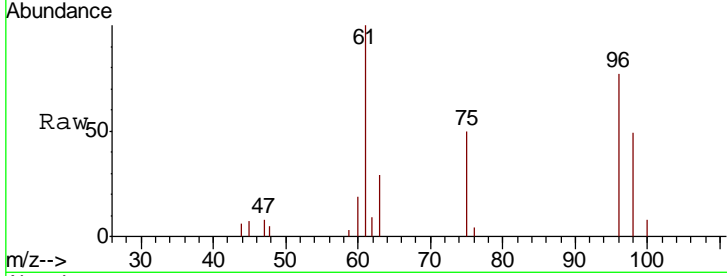




#27  
 cis-1,2-Dichloroethene  
 Concen: 5.025 ug/l  
 RT: 4.23 min Scan# 951  
 Delta R.T. 0.00 min  
 Lab File: VU026910.D  
 Acq: 19 Sep 2018 20:25

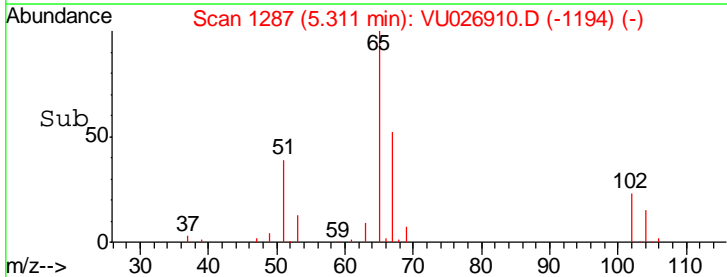
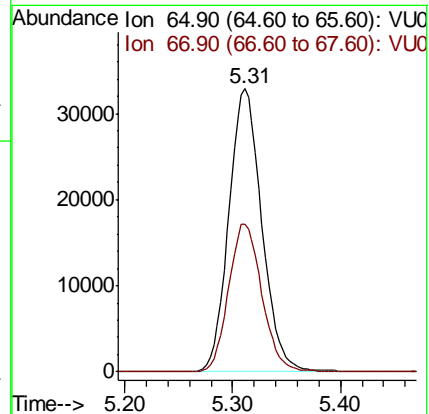
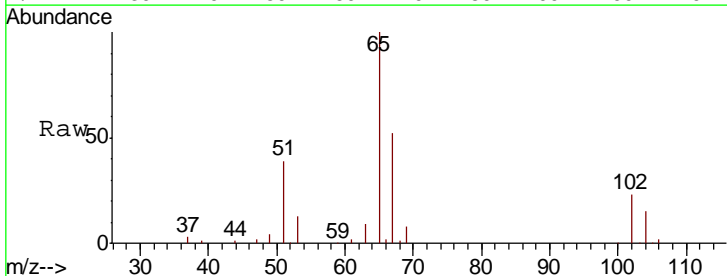
Instrument : MSVOA\_U  
 ClientSampleId : FT-DUP03-20180912

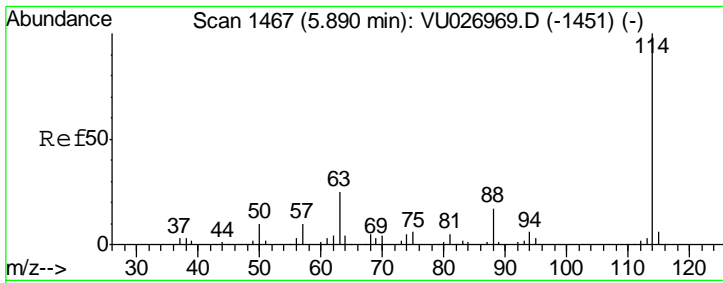
Tgt Ion	Resp	Lower	Upper
96	5715		
Ion Ratio			
96	100		
61	133.8	0.0	301.8
98	62.1	0.0	127.2



#33  
 1,2-Dichloroethane-d4  
 Concen: 56.592 ug/l  
 RT: 5.31 min Scan# 1287  
 Delta R.T. -0.00 min  
 Lab File: VU026910.D  
 Acq: 19 Sep 2018 20:25

Tgt Ion	Resp	Lower	Upper
65	70039		
Ion Ratio			
65	100		
67	52.7	0.0	106.4

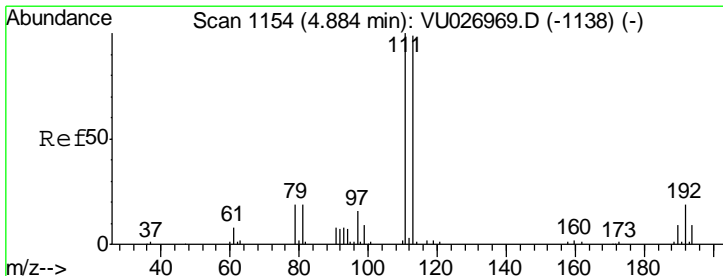
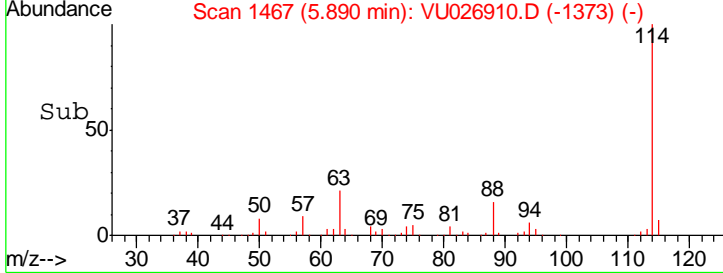
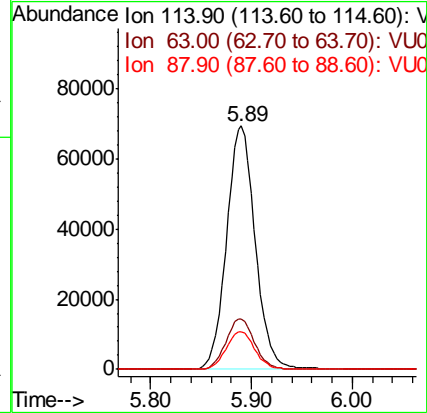
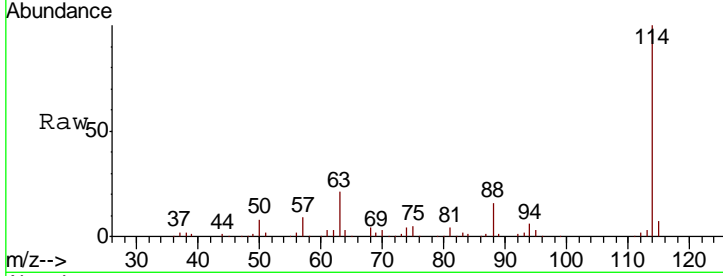




#34  
 1,4-Difluorobenzene  
 Concen: 50.000 ug/l  
 RT: 5.89 min Scan# 1467  
 Delta R.T. 0.00 min  
 Lab File: VU026910.D  
 Acq: 19 Sep 2018 20:25

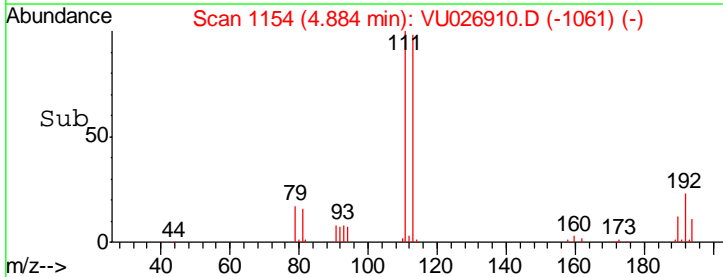
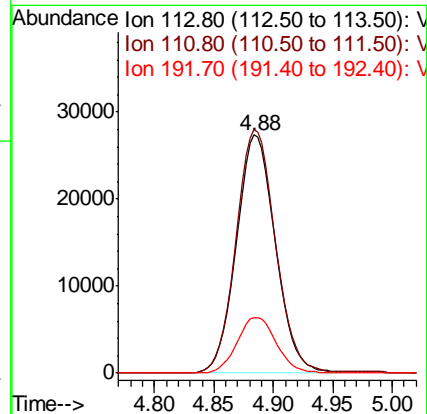
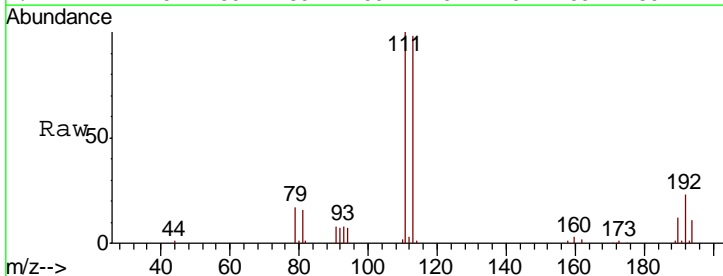
Instrument :  
 MSVOA\_U  
 ClientSampleId :  
 FT-DUP03-20180912

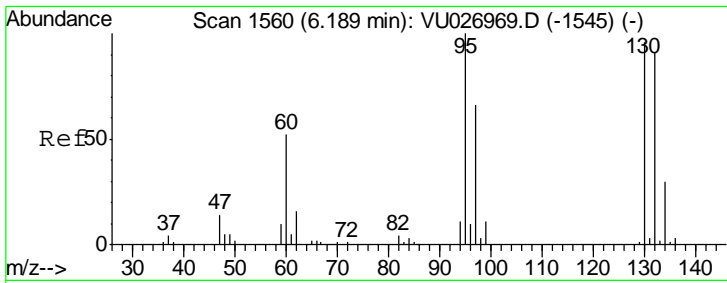
Tgt Ion	Resp	Lower	Upper
114	137317		
63	20.7	0.0	41.4
88	15.6	0.0	30.8



#35  
 Dibromofluoromethane  
 Concen: 55.470 ug/l  
 RT: 4.88 min Scan# 1154  
 Delta R.T. -0.00 min  
 Lab File: VU026910.D  
 Acq: 19 Sep 2018 20:25

Tgt Ion	Resp	Lower	Upper
113	62131		
111	103.2	83.1	124.7
192	23.5	17.4	26.2



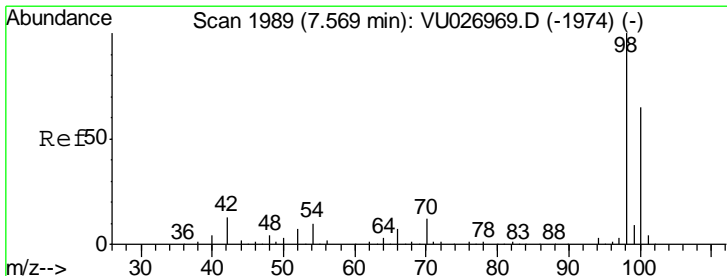
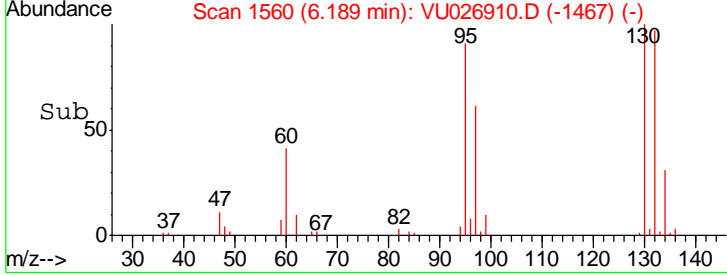
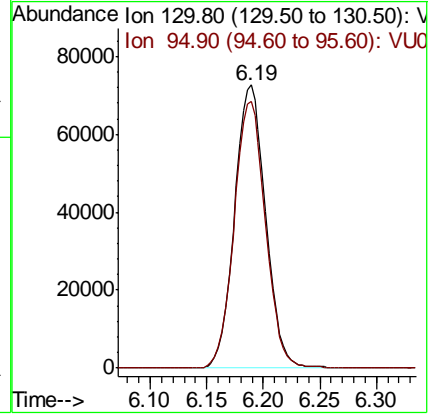
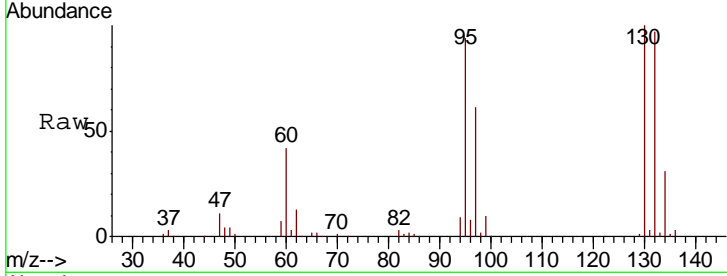


#44  
 Trichloroethene  
 Concen: 117.144 ug/l  
 RT: 6.19 min Scan# 1560  
 Delta R.T. -0.00 min  
 Lab File: VU026910.D  
 Acq: 19 Sep 2018 20:25

Instrument : MSVOA\_U  
 ClientSampled : FT-DUP03-20180912

Tgt Ion: 130 Resp: 138814

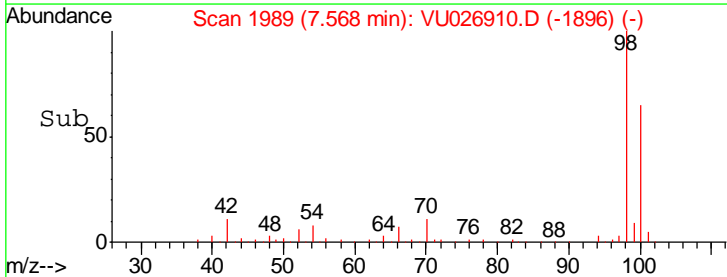
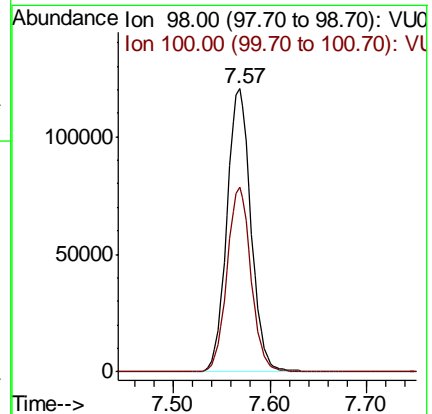
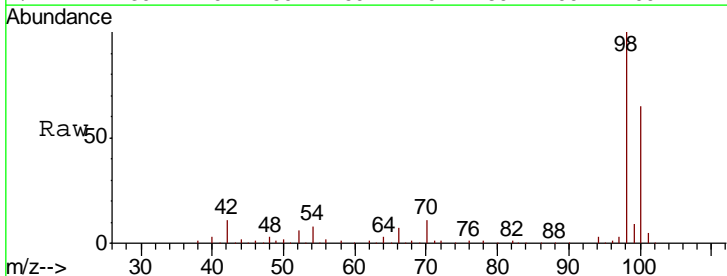
Ion	Ratio	Lower	Upper
130	100		
95	94.1	0.0	199.4

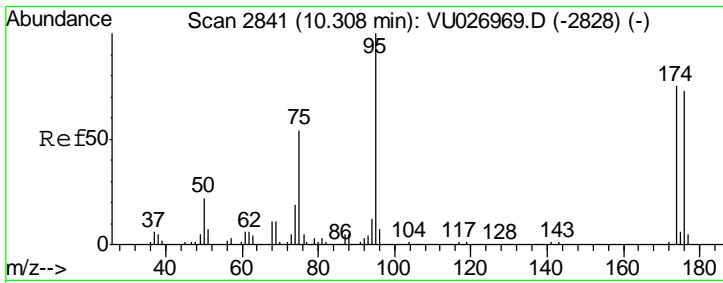


#50  
 Toluene-d8  
 Concen: 50.261 ug/l  
 RT: 7.57 min Scan# 1989  
 Delta R.T. -0.00 min  
 Lab File: VU026910.D  
 Acq: 19 Sep 2018 20:25

Tgt Ion: 98 Resp: 208219

Ion	Ratio	Lower	Upper
98	100		
100	64.7	51.2	76.8

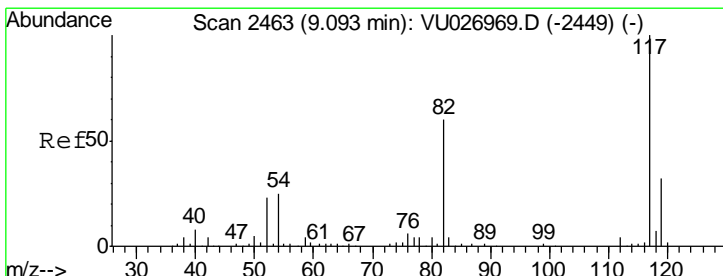
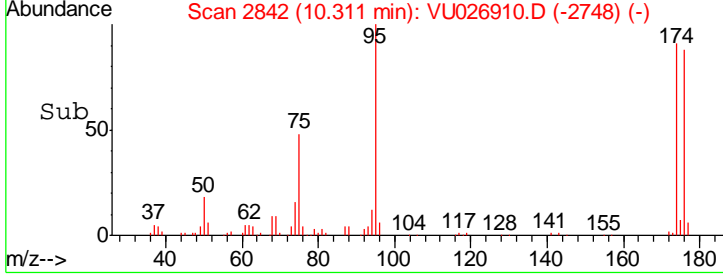
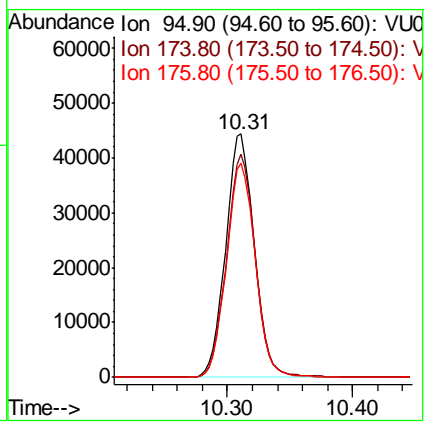
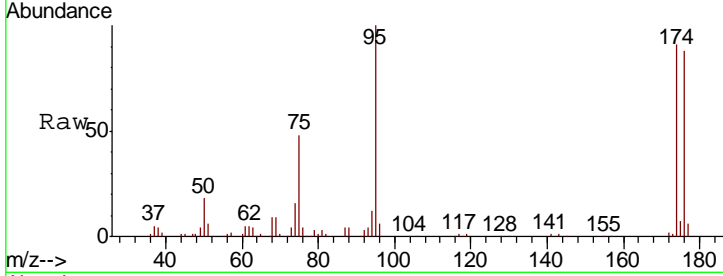




#62  
 4-Bromofluorobenzene  
 Concen: 46.611 ug/l  
 RT: 10.31 min Scan# 2842  
 Delta R.T. 0.00 min  
 Lab File: VU026910.D  
 Acq: 19 Sep 2018 20:25

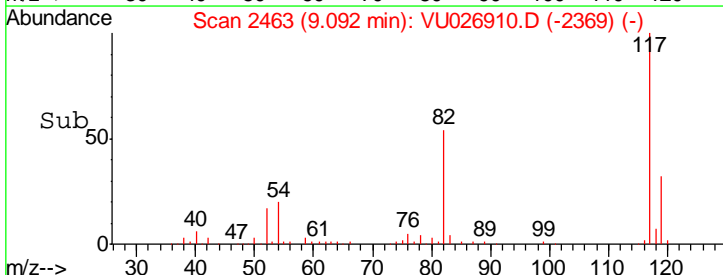
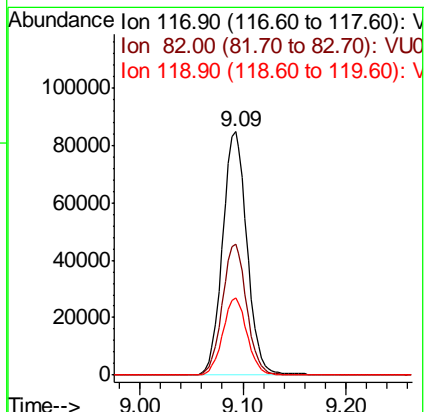
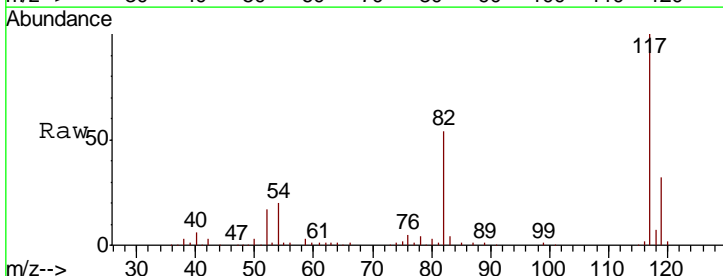
Instrument : MSVOA\_U  
 ClientSampleId : FT-DUP03-20180912

Tgt Ion	Resp	Lower	Upper
95	69984		
174	92.7	0.0	172.8
176	88.9	0.0	168.6

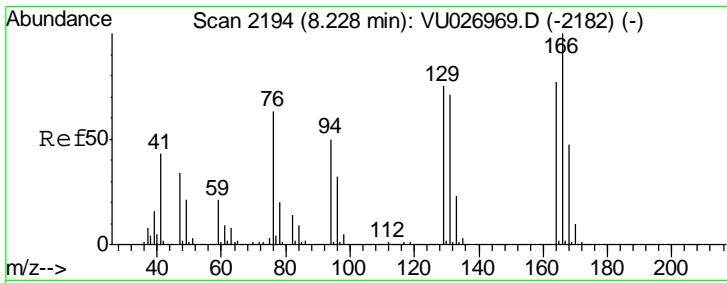


#63  
 Chlorobenzene-d5  
 Concen: 50.000 ug/l  
 RT: 9.09 min Scan# 2463  
 Delta R.T. 0.00 min  
 Lab File: VU026910.D  
 Acq: 19 Sep 2018 20:25

Tgt Ion	Resp	Lower	Upper
117	139935		
82	53.8	44.1	66.1
119	31.6	25.7	38.5



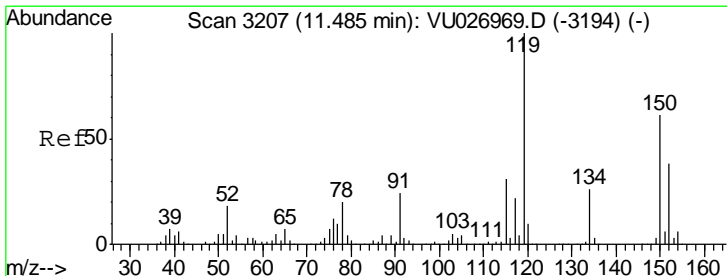
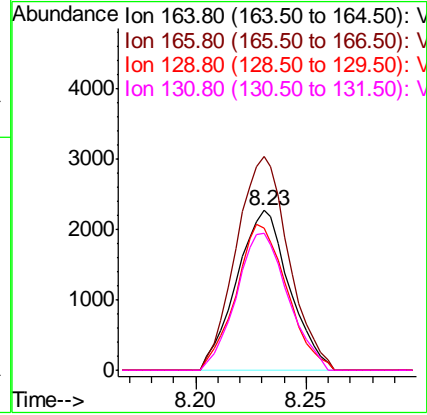
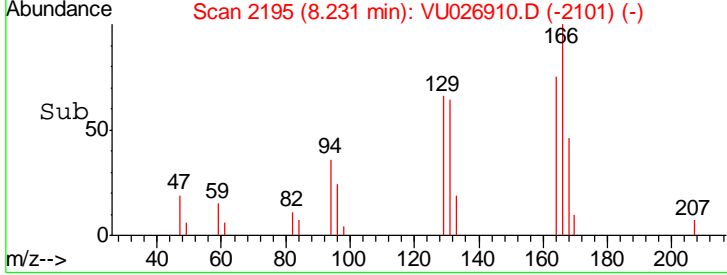
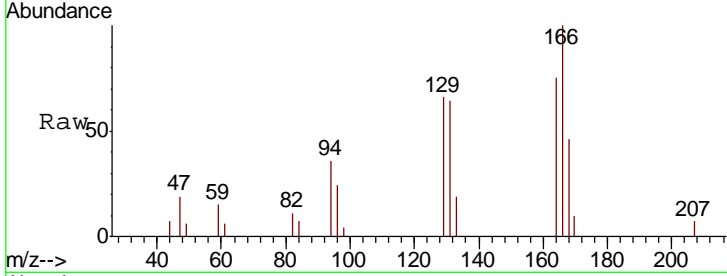




#64  
 Tetrachloroethene  
 Concen: 3.387 ug/l  
 RT: 8.23 min Scan# 2195  
 Delta R.T. 0.00 min  
 Lab File: VU026910.D  
 Acq: 19 Sep 2018 20:25

Instrument : MSVOA\_U  
 ClientSampleId : FT-DUP03-20180912

Tgt Ion	Resp	Lower	Upper
164	100		
166	133.7	100.5	150.7
129	88.7	75.3	112.9
131	85.6	71.4	107.2



#72  
 1,4-Dichlorobenzene-d4  
 Concen: 50.000 ug/l  
 RT: 11.48 min Scan# 3207  
 Delta R.T. -0.00 min  
 Lab File: VU026910.D  
 Acq: 19 Sep 2018 20:25

Tgt Ion	Resp	Lower	Upper
152	100		
115	54.4	40.4	121.1
150	156.8	0.0	345.2

