

Data Path : Z:\VOASRV\HPCHEM1\MSVOA U\DATA\VU092018\
 Data File : VU026901.D
 Acq On : 19 Sep 2018 16:55
 Operator : MD/SY
 Sample : J4913-06
 Misc : 5.0mL/MSVOA U/WATER
 ALS Vial : 5 Sample Multiplier: 1

Instrument :
 MSVOA_U
 ClientSampleId :
 BPSI-TT-MW30311-20180912

Integration Parameters: RTEINT.P
 Integrator: RTE
 Smoothing : ON Filtering: 5
 Sampling : 1 Min Area: 3 % of largest Peak
 Start Thrs: 0.2 Max Peaks: 100
 Stop Thrs : 0 Peak Location: TOP

If leading or trailing edge < 100 prefer < Baseline drop else tangent >
 Peak separation: 5

Method : Z:\VOASRV\HPCHEM1\MSVOA_U\METHOD\82U091218W.M
 Title : SW846 8260

Signal : TIC

peak #	R.T. min	first scan	max scan	last scan	PK TY	peak height	corr. area	corr. % max.	% of total
1	2.443	378	395	415	rBV	31679	57751	10.45%	1.841%
2	4.202	926	942	963	rBV2	4590	16663	3.02%	0.531%
3	4.884	1139	1154	1171	rBV	92175	205890	37.27%	6.563%
4	4.987	1171	1186	1211	rVB	106772	234508	42.45%	7.476%
5	5.311	1272	1287	1310	rBV	93472	195732	35.43%	6.240%
6	5.887	1452	1466	1490	rBV	171059	332040	60.10%	10.585%
7	6.189	1548	1560	1575	rVB2	29676	55441	10.04%	1.767%
8	7.569	1971	1989	2006	rBV	319019	552476	100.00%	17.612%
9	8.228	2183	2194	2213	rVB	164603	276016	49.96%	8.799%
10	9.093	2449	2463	2484	rBV	250628	414860	75.09%	13.225%
11	10.308	2829	2841	2871	rBV	225351	355703	64.38%	11.339%
12	11.485	3195	3207	3232	rBV	279101	439864	79.62%	14.022%

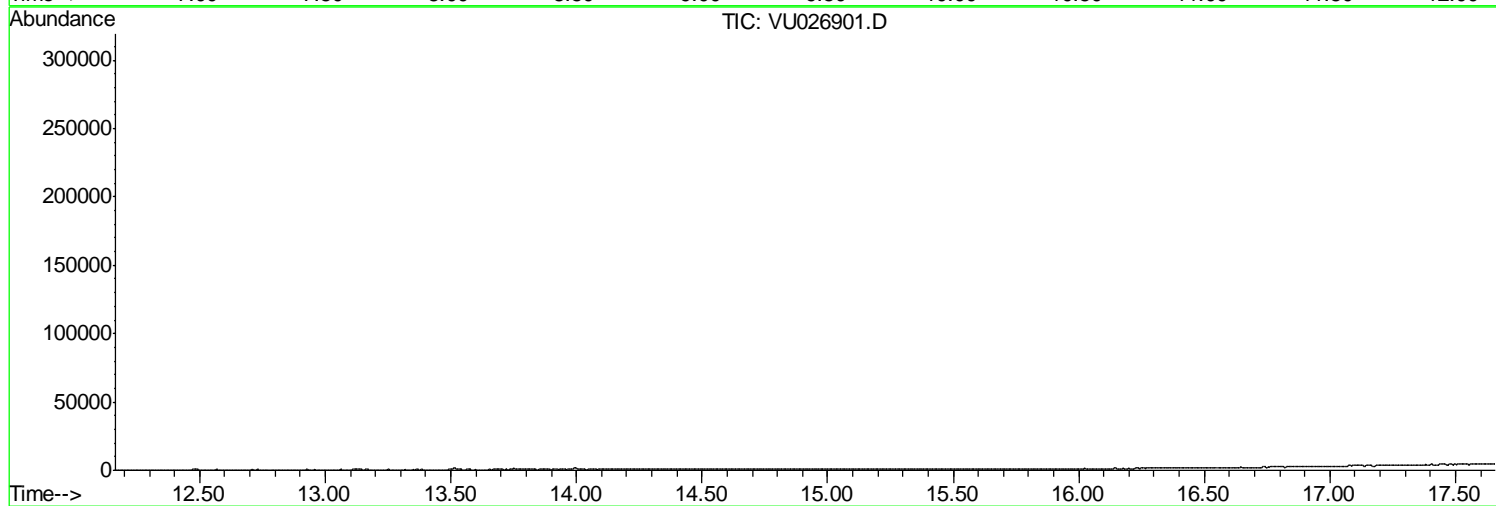
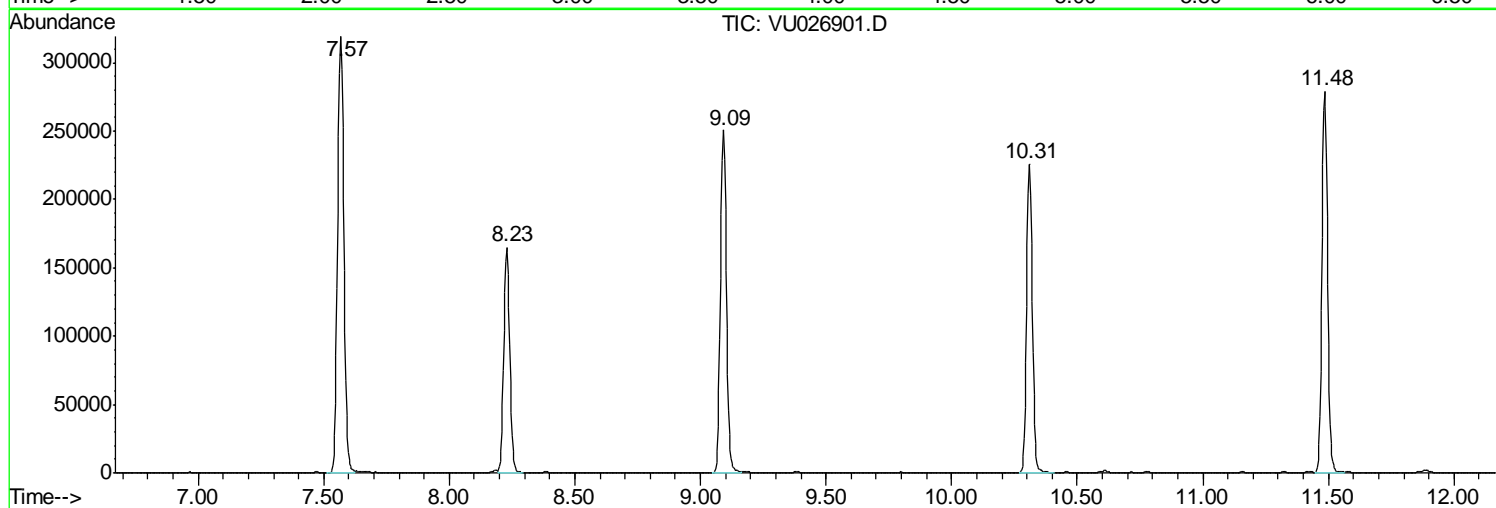
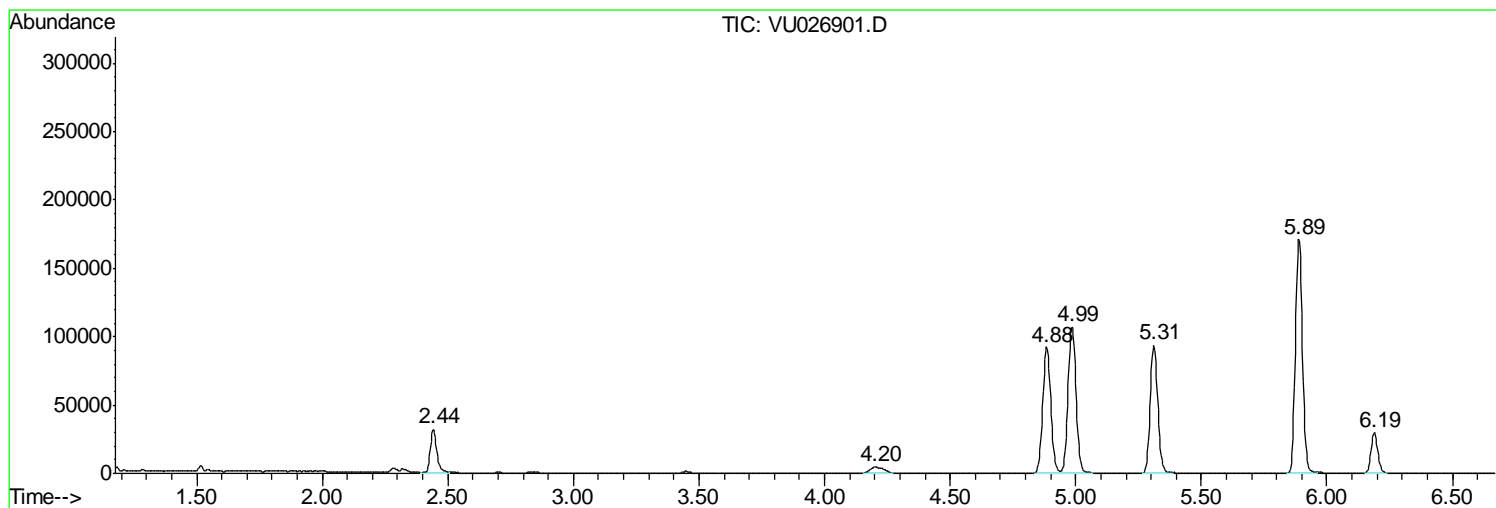
Sum of corrected areas: 3136944

Data Path : Z:\VOASRV\HPCHEM1\MSVOA U\DATA\VU092018\
Data File : VU026901.D
Acq On : 19 Sep 2018 16:55
Operator : MD/SY
Sample : J4913-06
Misc : 5.0mL/MSVOA U/WATER
ALS Vial : 5 Sample Multiplier: 1

Instrument :
MSVOA_U
ClientSampled :
BPSI-TT-MW30311-20180912

Quant Method : Z:\VOASRV\HPCHEM1\MSVOA_U\METHOD\82U091218W.M
Quant Title : SW846 8260

TIC Library : C:\DATABASE\NIST11.L
TIC Integration Parameters: LSCINT.P



Data Path : Z:\VOASRV\HPCHEM1\MSVOA_U\DATA\VU092018\
Data File : VU026901.D
Acq On : 19 Sep 2018 16:55
Operator : MD/SY
Sample : J4913-06
Misc : 5.0mL/MSVOA_U/WATER
ALS Vial : 5 Sample Multiplier: 1

Instrument :
MSVOA_U
ClientSampleId :
BPSI-TT-MW30311-20180912

Quant Method : Z:\VOASRV\HPCHEM1\MSVOA_U\METHOD\82U091218W.M
Quant Title : SW846 8260

TIC Library : C:\DATABASE\NIST11.L
TIC Integration Parameters: LSCINT.P

No Library Search Compounds Detected

Data Path : Z:\VOASRV\HPCHEM1\MSVOA_U\DATA\VU092018\
Data File : VU026901.D
Acq On : 19 Sep 2018 16:55
Operator : MD/SY
Sample : J4913-06
Misc : 5.0mL/MSVOA_U/WATER
ALS Vial : 5 Sample Multiplier: 1

Instrument :
MSVOA_U
ClientSampleId :
BPSI-TT-MW30311-20180912

Quant Method : Z:\VOASRV\HPCHEM1\MSVOA_U\METHOD\82U091218W.M
Quant Title : SW846 8260

TIC Library : C:\DATABASE\NIST11.L
TIC Integration Parameters: LSCINT.P

TIC Top Hit name	RT	EstConc	Units	Response	--Internal Standard--			
					#	RT	Resp	Conc
