

Data Path : Z:\voasrv\HPCHEM1\MSVOA\_U\Data\VU092021\  
 Data File : VU044709.D  
 Acq On : 20 Sep 2021 15:15  
 Operator : SY/MD  
 Sample : M3790-15  
 Misc : 25.0mL/MSVOA\_U/WATER  
 ALS Vial : 10 Sample Multiplier: 1

Instrument :  
 MSVOA\_U  
 ClientSampled :

Quant Time: Sep 21 02:49:22 2021  
 Quant Method : Z:\voasrv\HPCHEM1\MSVOA\_U\Method\SFAMUTR090921WMA.M  
 Quant Title : TRACE VOA SFAM1.0  
 QLast Update : Tue Sep 21 02:46:41 2021  
 Response via : Initial Calibration

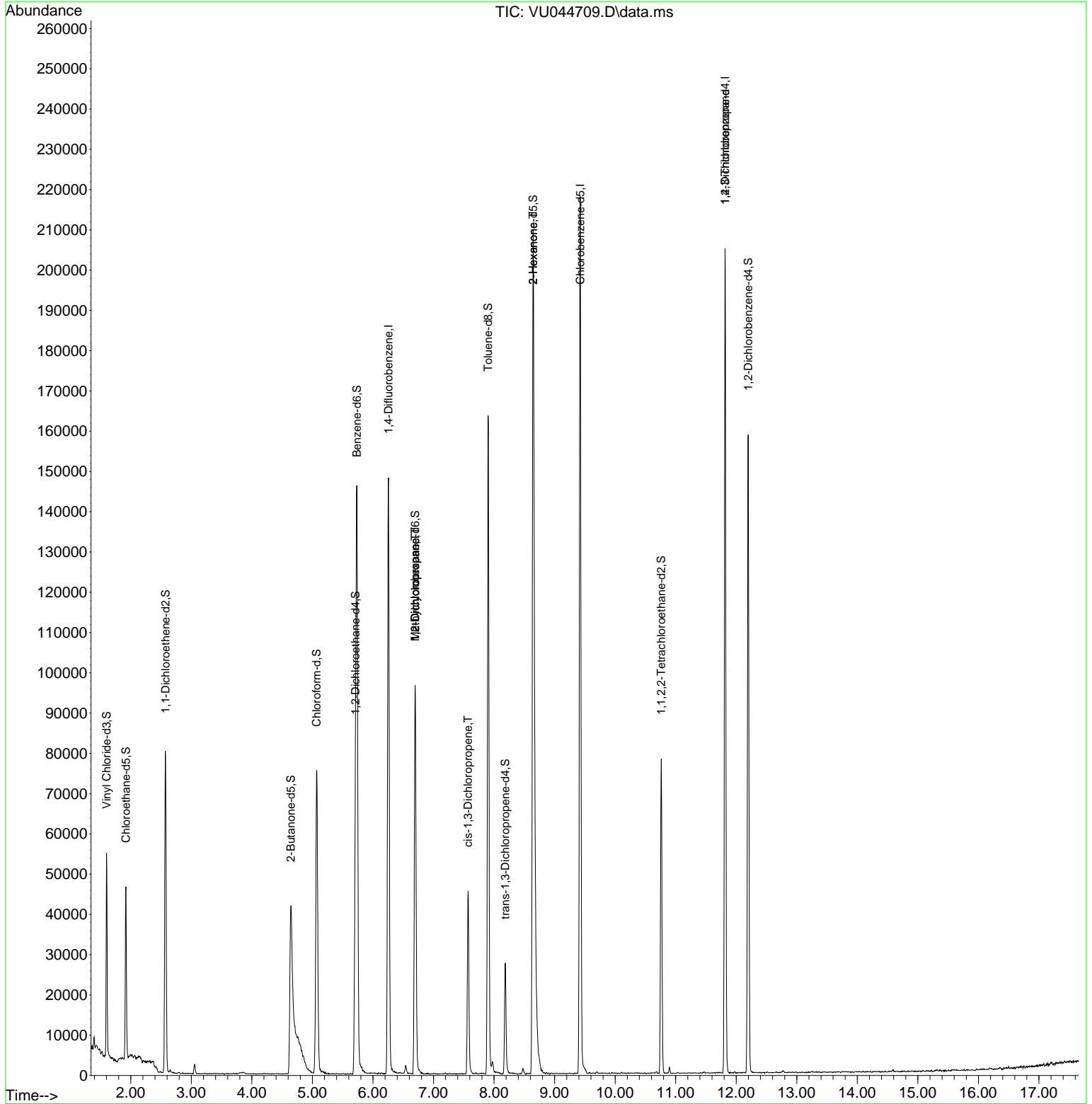
| Compound                      | R.T.   | QIon           | Response | Conc   | Units    | Dev(Min) |
|-------------------------------|--------|----------------|----------|--------|----------|----------|
| Internal Standards            |        |                |          |        |          |          |
| 1) 1,4-Difluorobenzene        | 6.256  | 114            | 112987   | 5.000  | ug/L     | 0.00     |
| 28) Chlorobenzene-d5          | 9.423  | 117            | 115161   | 5.000  | ug/L     | 0.00     |
| 58) 1,4-Dichlorobenzene-d4    | 11.816 | 152            | 48654    | 5.000  | ug/L     | 0.00     |
| System Monitoring Compounds   |        |                |          |        |          |          |
| 4) Vinyl Chloride-d3          | 1.601  | 65             | 34453    | 5.168  | ug/L     | 0.00     |
| Spiked Amount                 | 5.000  | Range 40 - 130 | Recovery | =      | 103.400% |          |
| 7) Chloroethane-d5            | 1.919  | 69             | 30883    | 4.539  | ug/L     | 0.00     |
| Spiked Amount                 | 5.000  | Range 65 - 130 | Recovery | =      | 90.800%  |          |
| 11) 1,1-Dichloroethene-d2     | 2.575  | 65             | 15696    | 4.661  | ug/L     | 0.00     |
| Spiked Amount                 | 5.000  | Range 60 - 125 | Recovery | =      | 93.200%  |          |
| 20) 2-Butanone-d5             | 4.645  | 46             | 101703   | 36.392 | ug/L     | 0.00     |
| Spiked Amount                 | 50.000 | Range 40 - 130 | Recovery | =      | 72.780%  |          |
| 24) Chloroform-d              | 5.070  | 84             | 65778    | 4.691  | ug/L     | 0.00     |
| Spiked Amount                 | 5.000  | Range 70 - 125 | Recovery | =      | 93.800%  |          |
| 26) 1,2-Dichloroethane-d4     | 5.710  | 65             | 41399    | 4.951  | ug/L     | 0.00     |
| Spiked Amount                 | 5.000  | Range 70 - 130 | Recovery | =      | 99.000%  |          |
| 32) Benzene-d6                | 5.735  | 84             | 128060   | 4.361  | ug/L     | 0.00     |
| Spiked Amount                 | 5.000  | Range 70 - 125 | Recovery | =      | 87.200%  |          |
| 36) 1,2-Dichloropropane-d6    | 6.697  | 67             | 45098    | 4.677  | ug/L     | 0.00     |
| Spiked Amount                 | 5.000  | Range 60 - 140 | Recovery | =      | 93.600%  |          |
| 41) Toluene-d8                | 7.902  | 98             | 102847   | 4.023  | ug/L     | 0.00     |
| Spiked Amount                 | 5.000  | Range 70 - 130 | Recovery | =      | 80.400%  |          |
| 43) trans-1,3-Dichloroprop... | 8.185  | 79             | 15365    | 4.520  | ug/L     | 0.00     |
| Spiked Amount                 | 5.000  | Range 55 - 130 | Recovery | =      | 90.400%  |          |
| 46) 2-Hexanone-d5             | 8.645  | 63             | 101938   | 46.659 | ug/L     | 0.00     |
| Spiked Amount                 | 50.000 | Range 45 - 130 | Recovery | =      | 93.320%  |          |
| 56) 1,1,2,2-Tetrachloroeth... | 10.761 | 84             | 39553    | 4.626  | ug/L     | 0.00     |
| Spiked Amount                 | 5.000  | Range 65 - 120 | Recovery | =      | 92.600%  |          |
| 66) 1,2-Dichlorobenzene-d4    | 12.198 | 152            | 38464    | 4.791  | ug/L     | 0.00     |
| Spiked Amount                 | 5.000  | Range 80 - 120 | Recovery | =      | 95.800%  |          |
| Target Compounds              |        |                |          |        |          |          |
| 35) Methylcyclohexane         | 6.697  | 83             | 9931     | 0.714  | ug/L #   | 16       |
| 37) 1,2-Dichloropropane       | 6.697  | 63             | 5338     | 0.583  | ug/L #   | 88       |
| 39) cis-1,3-Dichloropropene   | 7.571  | 75             | 1140     | 0.088  | ug/L #   | 62       |
| 48) 2-Hexanone                | 8.645  | 43             | 15712    | 2.961  | ug/L #   | 63       |
| 61) 1,2,3-Trichloropropane    | 11.816 | 75             | 7349     | 1.367  | ug/L #   | 66       |

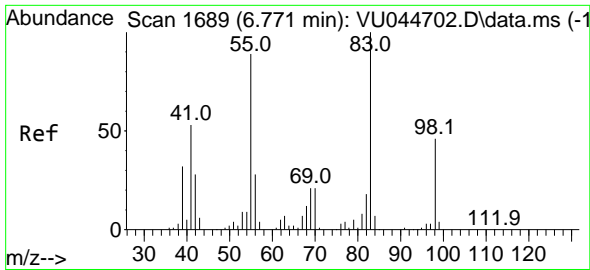
(#) = qualifier out of range (m) = manual integration (+) = signals summed

Data Path : Z:\voasrv\HPCHEM1\MSVOA\_U\Data\VU092021\  
 Data File : VU044709.D  
 Acq On : 20 Sep 2021 15:15  
 Operator : SY/MD  
 Sample : M3790-15  
 Misc : 25.0mL/MSVOA\_U/WATER  
 ALS Vial : 10 Sample Multiplier: 1

Instrument :  
 MSVOA\_U  
 ClientSampled :

Quant Time: Sep 21 02:49:22 2021  
 Quant Method : Z:\voasrv\HPCHEM1\MSVOA\_U\Method\SFAMUTR090921WMA.M  
 Quant Title : TRACE VOA SFAM1.0  
 QLast Update : Tue Sep 21 02:46:41 2021  
 Response via : Initial Calibration

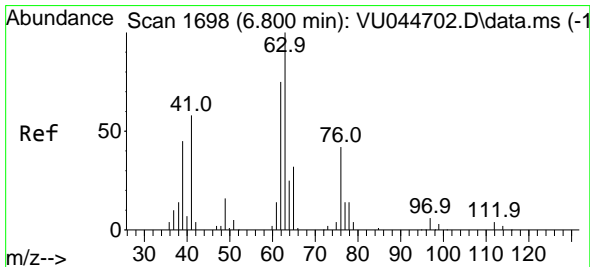
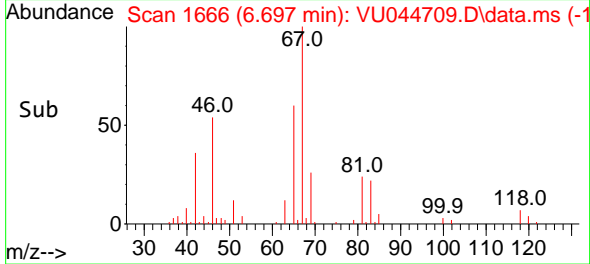
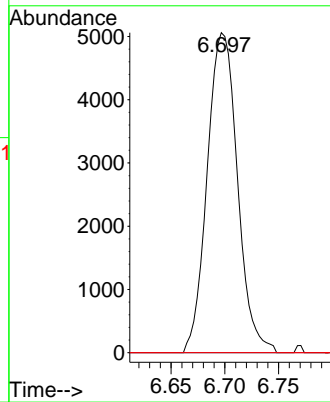
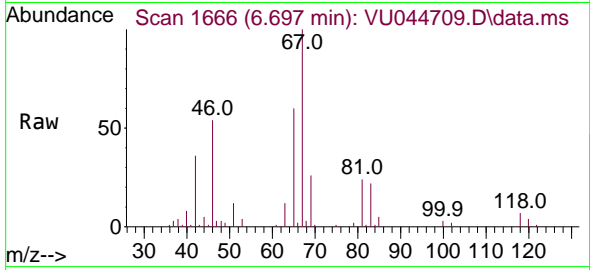




#35  
 Methylcyclohexane  
 Concen: 0.714 ug/L  
 RT: 6.697 min Scan# 1666  
 Delta R.T. -0.074 min  
 Lab File: VU044709.D  
 Acq: 20 Sep 2021 15:15

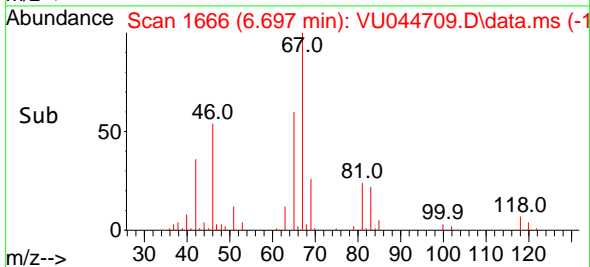
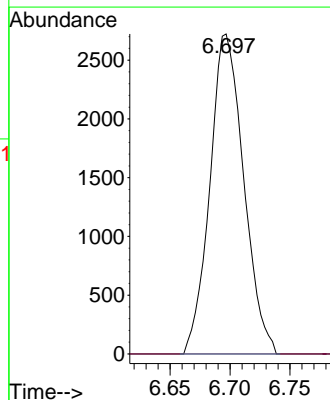
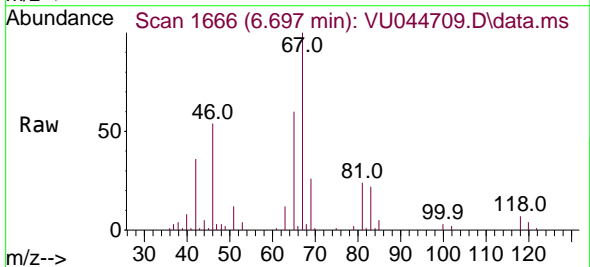
Instrument :  
 MSVOA\_U  
 ClientSampled :

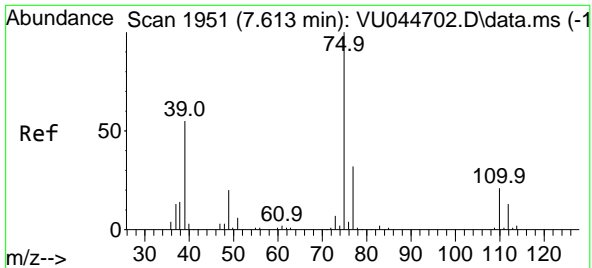
| Tgt Ion | Resp | Lower | Upper  |
|---------|------|-------|--------|
| 83      | 9931 |       |        |
| 55      | 0.0  | 68.3  | 102.5# |
| 98      | 2.8  | 37.3  | 55.9#  |



#37  
 1,2-Dichloropropane  
 Concen: 0.583 ug/L  
 RT: 6.697 min Scan# 1666  
 Delta R.T. -0.103 min  
 Lab File: VU044709.D  
 Acq: 20 Sep 2021 15:15

| Tgt Ion | Resp | Lower | Upper |
|---------|------|-------|-------|
| 63      | 5338 |       |       |
| 112     | 0.0  | 3.1   | 4.7#  |

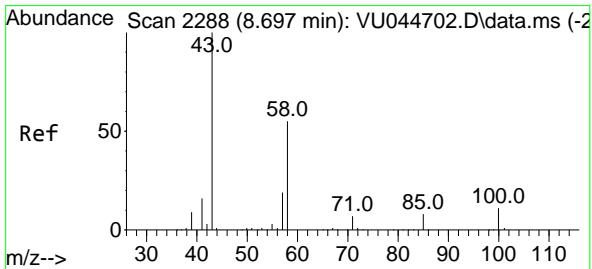
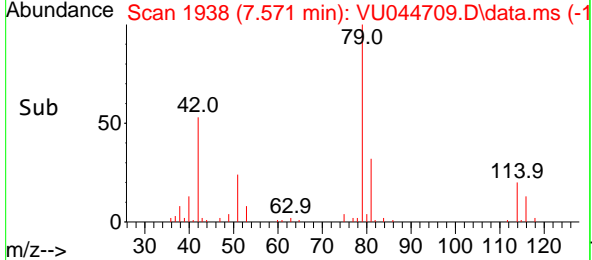
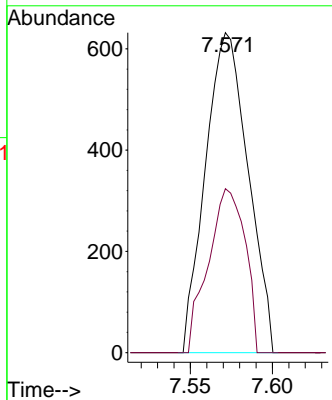
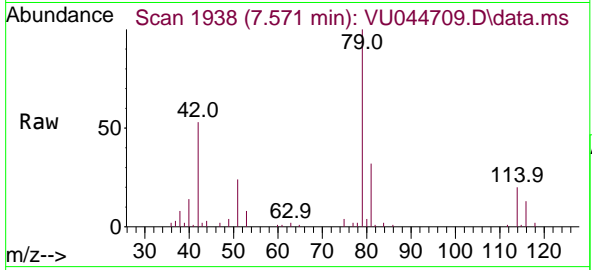




#39  
 cis-1,3-Dichloropropene  
 Concen: 0.088 ug/L  
 RT: 7.571 min Scan# 1938  
 Delta R.T. -0.042 min  
 Lab File: VU044709.D  
 Acq: 20 Sep 2021 15:15

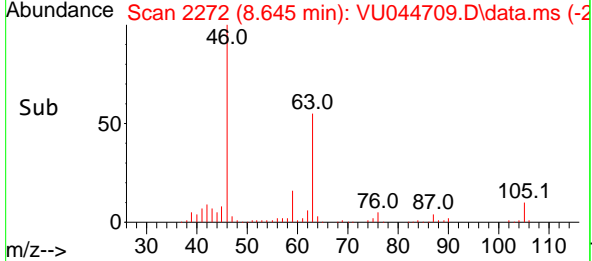
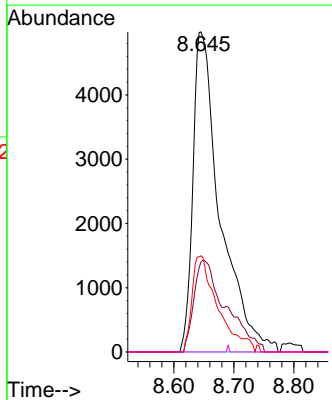
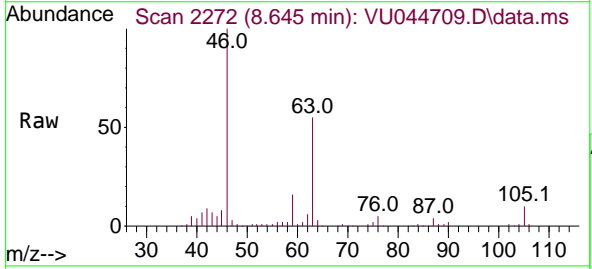
Instrument :  
 MSVOA\_U  
 ClientSampled :

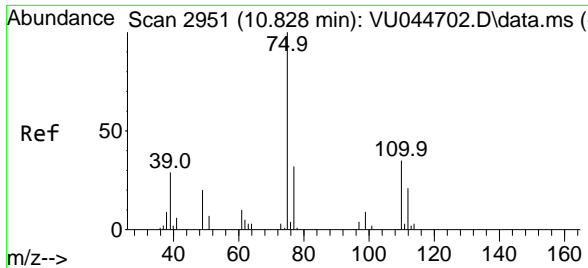
Tgt Ion: 75 Resp: 1140  
 Ion Ratio Lower Upper  
 75 100  
 77 51.3 21.5 39.9#



#48  
 2-Hexanone  
 Concen: 2.961 ug/L  
 RT: 8.645 min Scan# 2272  
 Delta R.T. -0.051 min  
 Lab File: VU044709.D  
 Acq: 20 Sep 2021 15:15

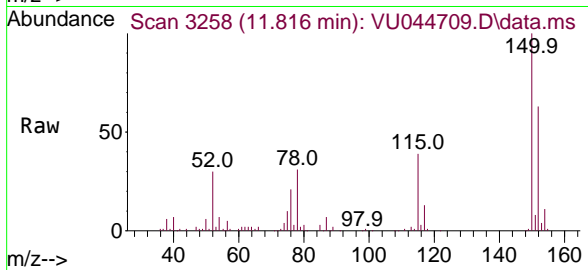
Tgt Ion: 43 Resp: 15712  
 Ion Ratio Lower Upper  
 43 100  
 58 24.3 44.6 66.8#  
 57 28.6 14.8 22.2#  
 100 0.1 9.0 13.4#





#61  
 1,2,3-Trichloropropane  
 Concen: 1.367 ug/L  
 RT: 11.816 min Scan# 3258  
 Delta R.T. 0.987 min  
 Lab File: VU044709.D  
 Acq: 20 Sep 2021 15:15

Instrument :  
 MSVOA\_U  
 ClientSampled :



Tgt Ion: 75 Resp: 7349

| Ion | Ratio | Lower | Upper |
|-----|-------|-------|-------|
| 75  | 100   |       |       |
| 110 | 0.0   | 28.8  | 43.2# |
| 77  | 30.4  | 25.9  | 38.9  |

