

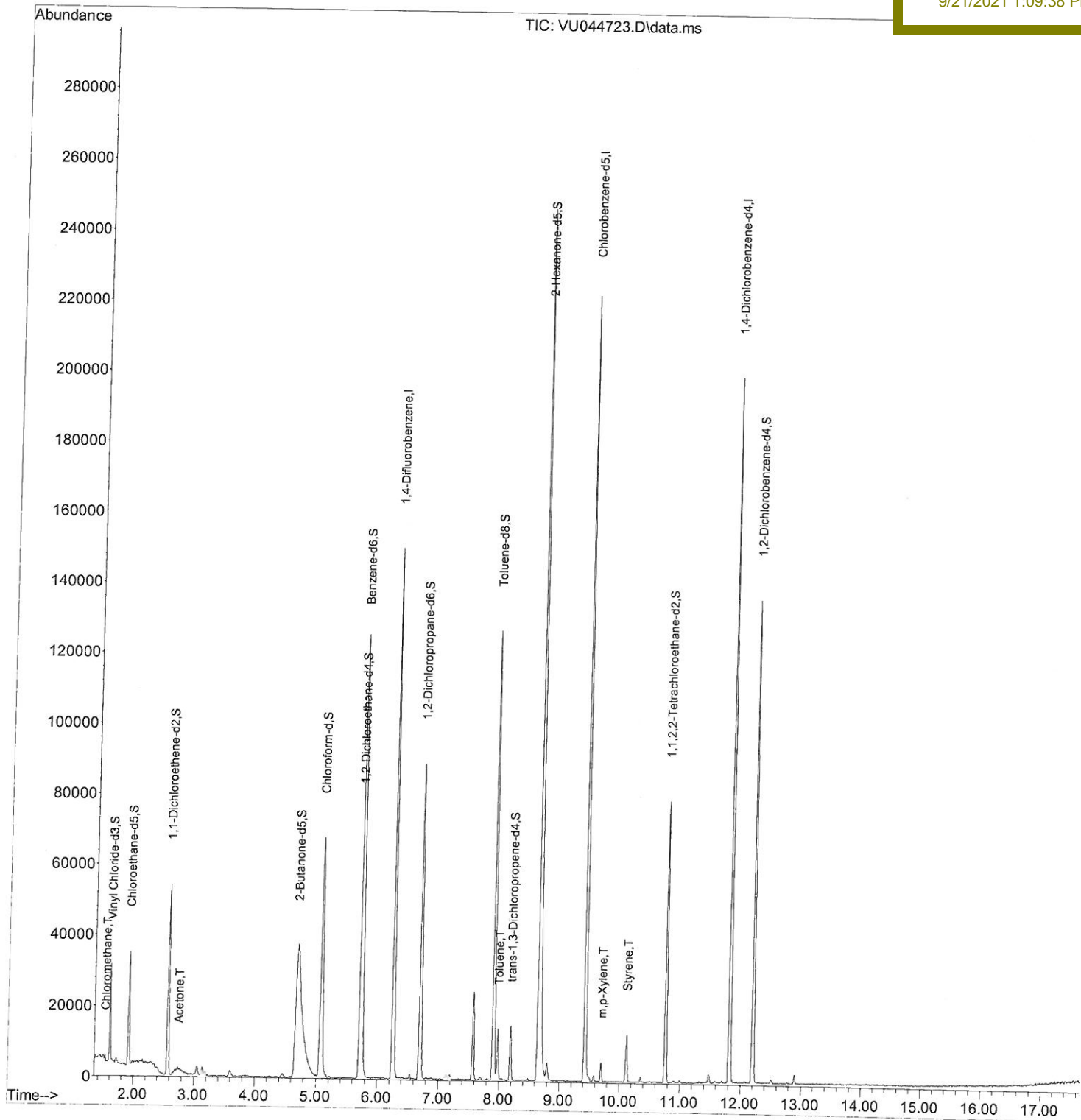
Data Path : Z:\voasrv\HPCHEM1\MSVOA_U\Data\VU092021\
 Data File : VU044723.D
 Acq On : 20 Sep 2021 20:54
 Operator : SY/MD
 Sample : M3789-14
 Misc : 25.0mL/MSVOA_U/WATER
 ALS Vial : 24 Sample Multiplier: 1

Instrument :
 MSVOA_U
 Client Sampled :
 C0CF7

Quant Time: Sep 21 02:51:52 2021
 Quant Method : Z:\voasrv\HPCHEM1\MSVOA_U\Method\SFAMUTR090921WMA.M
 Quant Title : TRACE VOA SFAM1.0
 QLast Update : Tue Sep 21 02:46:41 2021
 Response via : Initial Calibration

Manual Integrations
 APPROVED

MMDadoda
 9/21/2021 1:09:38 PM



Quantitation Report (Qedit)

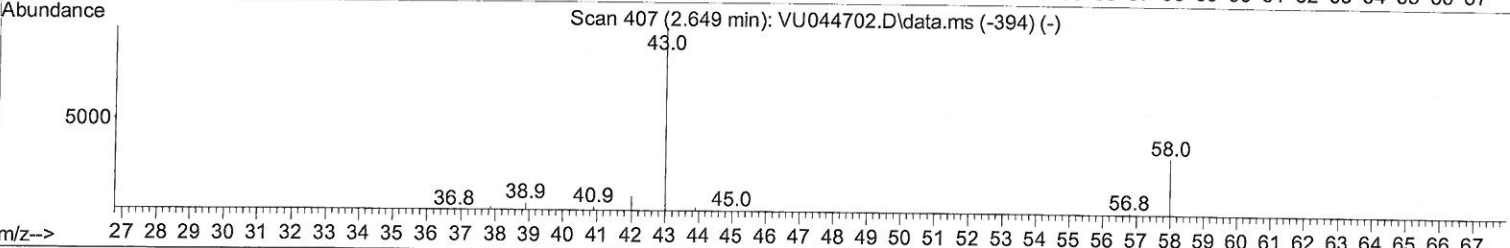
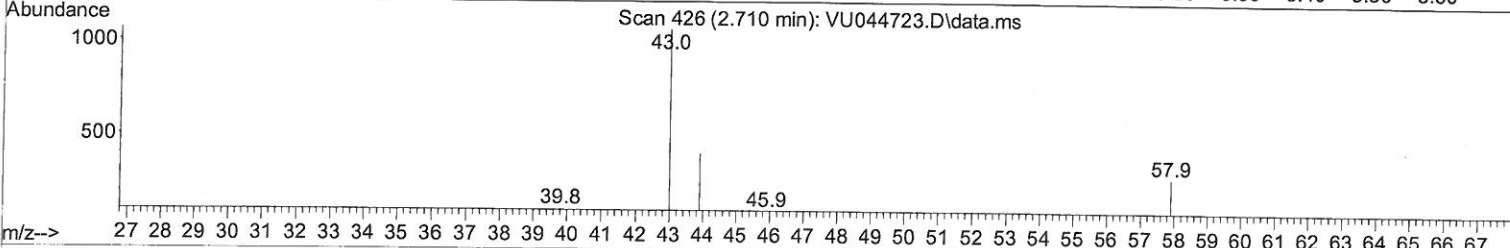
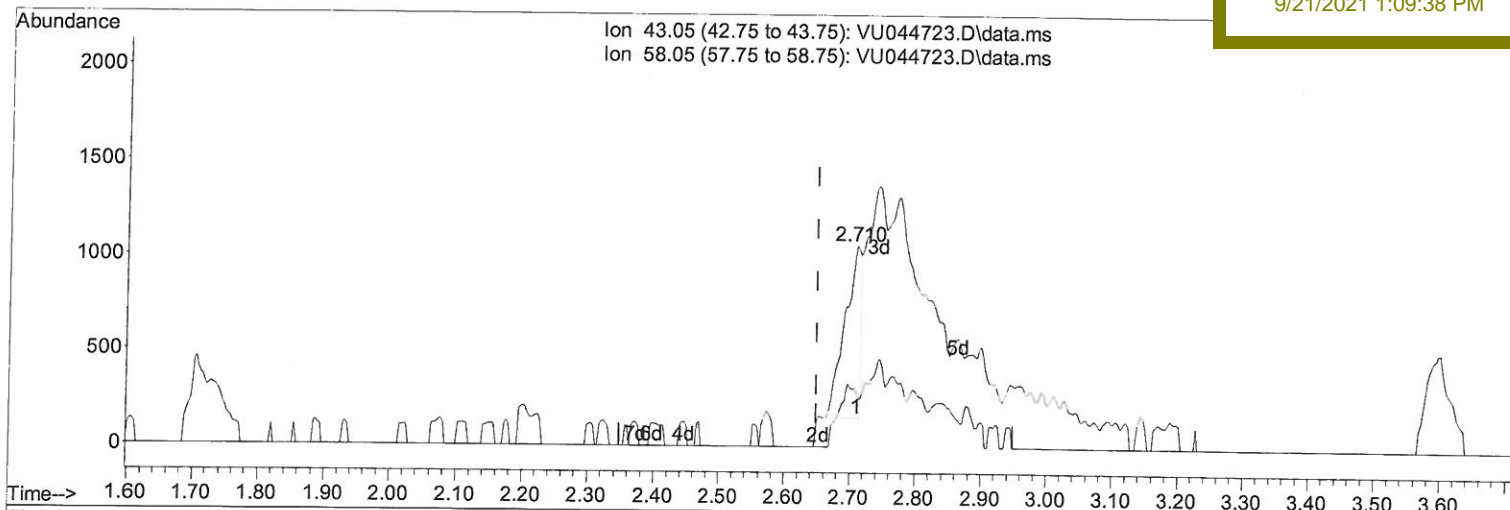
Data Path : Z:\voasrv\HPCHEM1\MSVOA_U\Data\VU092021\
 Data File : VU044723.D
 Acq On : 20 Sep 2021 20:54
 Operator : SY/MD
 Sample : M3789-14
 Misc : 25.0mL/MSVOA_U/WATER
 ALS Vial : 24 Sample Multiplier: 1

Instrument :
 MSVOA_U
 Client Sampled :
 C0CF7

Quant Time: Sep 21 02:51:52 2021
 Quant Method : Z:\voasrv\HPCHEM1\MSVOA_U\Method\SFAMUTR090921WMA.M
 Quant Title : TRACE VOA SFAM1.0
 QLast Update : Tue Sep 21 02:46:41 2021
 Response via : Initial Calibration

Manual Integrations
 APPROVED

MMDadoda
 9/21/2021 1:09:38 PM



TIC: VU044723.D\data.ms

(13) Acetone (T)

2.710min (+ 0.061) 0.86 ug/L

response 1591

Ion	Exp%	Act%
43.05	100.00	100.00
58.05	21.20	39.66
0.00	0.00	0.00
0.00	0.00	0.00

Quantitation Report (Qedit)

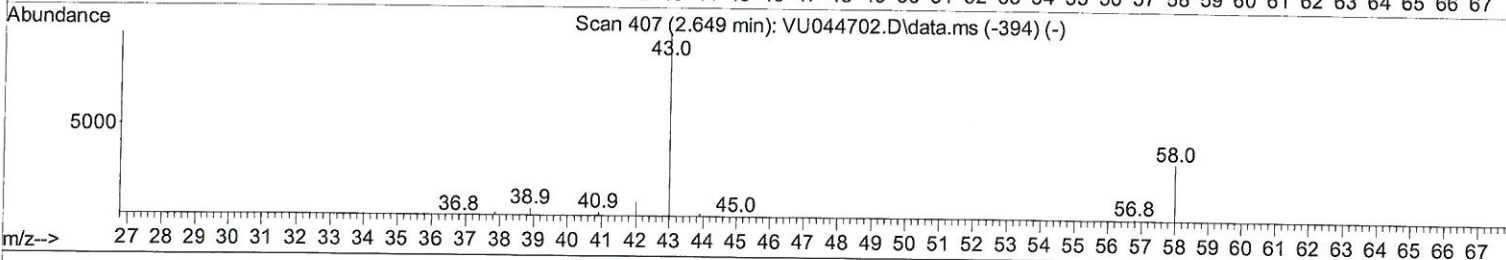
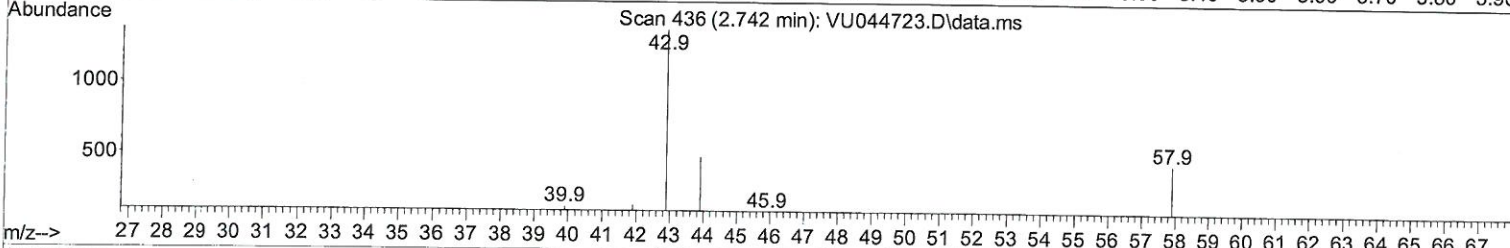
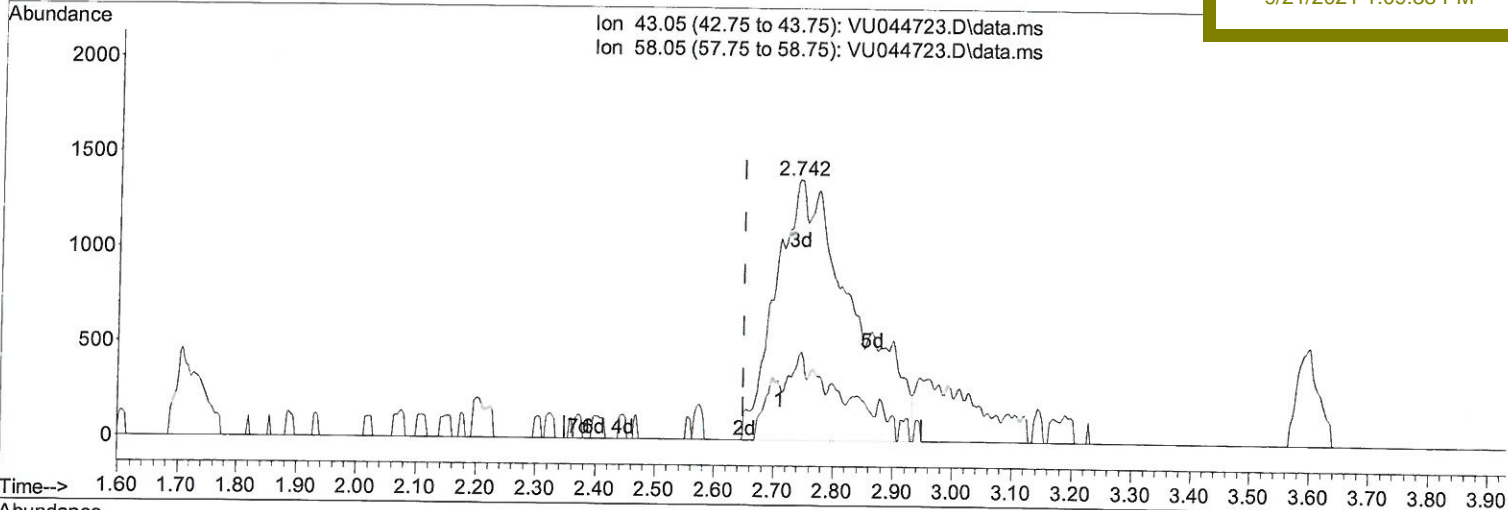
Data Path : Z:\voasrv\HPCHEM1\MSVOA_U\Data\VU092021\
 Data File : VU044723.D
 Acq On : 20 Sep 2021 20:54
 Operator : SY/MD
 Sample : M3789-14
 Misc : 25.0mL/MSVOA_U/WATER
 ALS Vial : 24 Sample Multiplier: 1

Instrument :
 MSVOA_U
 Client Sampled :
 C0CF7

Quant Time: Sep 21 02:51:52 2021
 Quant Method : Z:\voasrv\HPCHEM1\MSVOA_U\Method\SFAMUTR090921WMA.M
 Quant Title : TRACE VOA SFAM1.0
 QLast Update : Tue Sep 21 02:46:41 2021
 Response via : Initial Calibration

Manual Integrations
 APPROVED

MMDadoda
 9/21/2021 1:09:38 PM



TIC: VU044723.D\data.ms

(13) Acetone (T)

2.742min (+ 0.093) 6.73 ug/L m *7 mg / 09/22/21*

response	12389		
Ion	Exp%	Act%	
43.05	100.00	100.00	
58.05	21.20	5.09	
0.00	0.00	0.00	
0.00	0.00	0.00	

Quantitation Report (QT Reviewed)

Data Path : Z:\voasrv\HPCHEM1\MSVOA_U\Data\VU092021\
 Data File : VU044723.D
 Acq On : 20 Sep 2021 20:54
 Operator : SY/MD
 Sample : M3789-14
 Misc : 25.0mL/MSVOA_U/WATER
 ALS Vial : 24 Sample Multiplier: 1

Instrument :
 MSVOA_U
 Client Sampled :
 C0CF7

Quant Time: Sep 21 02:51:52 2021
 Quant Method : Z:\voasrv\HPCHEM1\MSVOA_U\Method\SFAMUTR090921WMA.M
 Quant Title : TRACE VOA SFAM1.0
 QLast Update : Tue Sep 21 02:46:41 2021
 Response via : Initial Calibration

Manual Integrations
 APPROVED

MMDadoda
 9/21/2021 1:09:38 PM

Compound	R.T.	QIon	Response	Conc	Units	Dev(Min)
Internal Standards						
1) 1,4-Difluorobenzene	6.256	114	114323	5.000	ug/L	0.00
28) Chlorobenzene-d5	9.423	117	116278	5.000	ug/L	0.00
58) 1,4-Dichlorobenzene-d4	11.816	152	47711	5.000	ug/L	0.00
System Monitoring Compounds						
4) Vinyl Chloride-d3	1.601	65	18139	2.689	ug/L	0.00
Spiked Amount	5.000	Range 40 - 130	Recovery =	53.800%		
7) Chloroethane-d5	1.919	69	23449	3.406	ug/L	0.00
Spiked Amount	5.000	Range 65 - 130	Recovery =	68.200%		
11) 1,1-Dichloroethene-d2	2.572	65	10721	3.147	ug/L	0.00
Spiked Amount	5.000	Range 60 - 125	Recovery =	63.000%		
20) 2-Butanone-d5	4.687	46	151267	53.495	ug/L	0.05
Spiked Amount	50.000	Range 40 - 130	Recovery =	107.000%		
24) Chloroform-d	5.070	84	61617	4.343	ug/L	0.00
Spiked Amount	5.000	Range 70 - 125	Recovery =	86.800%		
26) 1,2-Dichloroethane-d4	5.710	65	37613	4.446	ug/L	0.00
Spiked Amount	5.000	Range 70 - 130	Recovery =	89.000%		
32) Benzene-d6	5.735	84	108602	3.663	ug/L	0.00
Spiked Amount	5.000	Range 70 - 125	Recovery =	73.200%		
36) 1,2-Dichloropropane-d6	6.697	67	41103	4.221	ug/L	0.00
Spiked Amount	5.000	Range 60 - 140	Recovery =	84.400%		
41) Toluene-d8	7.903	98	80621	3.124	ug/L	0.00
Spiked Amount	5.000	Range 70 - 130	Recovery =	62.400%#		
43) trans-1,3-Dichloroprop...	8.185	79	8675	2.527	ug/L	0.00
Spiked Amount	5.000	Range 55 - 130	Recovery =	50.600%#		
46) 2-Hexanone-d5	8.648	63	103195	46.781	ug/L	0.00
Spiked Amount	50.000	Range 45 - 130	Recovery =	93.560%		
56) 1,1,2,2-Tetrachloroeth...	10.761	84	39796	4.610	ug/L	0.00
Spiked Amount	5.000	Range 65 - 120	Recovery =	92.200%		
66) 1,2-Dichlorobenzene-d4	12.198	152	32354	4.110	ug/L	0.00
Spiked Amount	5.000	Range 80 - 120	Recovery =	82.200%		
Target Compounds						
3) Chloromethane	1.520	50	1136	0.104	ug/L	98
13) Acetone	2.742	43	12389m	6.727	ug/L	95
42) Toluene	7.973	91	9912	0.275	ug/L	94
53) m,p-Xylene	9.697	106	1624	0.109	ug/L	97
55) Styrene	10.118	104	6024	0.243	ug/L	97

MD
09/22/21

(#) = qualifier out of range (m) = manual integration (+) = signals summed