

Data File : VU026933.D  
 Acq On : 20 Sep 2018 13:06  
 Operator : MD/SY  
 Sample : J4893-03  
 Misc : 5.0mL/MSVOA\_U/WATER  
 ALS Vial : 10 Sample Multiplier: 1

Instrument :  
 MSVOA\_U  
 ClientSampled :  
 C08K2

Quant Time: Sep 21 04:25:28 2018  
 Quant Method : Z:\VOASRV\HPCHEM1\MSVOA\_U\METHOD\SOMULM091718WMA.M  
 Quant Title : VOC Analysis  
 QLast Update : Fri Sep 21 04:24:07 2018  
 Response via : Initial Calibration

Internal Standards	R.T.	QIon	Response	Conc	Units	Dev(Min)
1) 1,4-Difluorobenzene	5.89	114	343428	50.00	ug/L	0.00
28) Chlorobenzene-d5	9.09	117	338628	50.00	ug/L	0.00
60) 1,4-Dichlorobenzene-d4	11.48	152	183526	50.00	ug/L	0.00

System Monitoring Compounds

4) Vinyl Chloride-d3	1.40	65	99329	39.10	ug/L	0.00
Spiked Amount	50.000	Range	60 - 135	Recovery	=	78.20%
7) Chloroethane-d5	1.68	69	84044	38.65	ug/L	0.00
Spiked Amount	50.000	Range	70 - 130	Recovery	=	77.30%
11) 1,1-Dichloroethene-d2	2.27	63	142182	29.58	ug/L	0.00
Spiked Amount	50.000	Range	60 - 125	Recovery	=	59.16%#
21) 2-Butanone-d5	4.18	46	133059	78.93	ug/L	0.00
Spiked Amount	100.000	Range	40 - 130	Recovery	=	78.93%
24) Chloroform-d	4.65	84	168371	35.73	ug/L	0.00
Spiked Amount	50.000	Range	70 - 125	Recovery	=	71.46%
26) 1,2-Dichloroethane-d4	5.31	65	109573	36.93	ug/L	0.00
Spiked Amount	50.000	Range	70 - 125	Recovery	=	73.86%
32) Benzene-d6	5.34	84	352580	37.15	ug/L	0.00
Spiked Amount	50.000	Range	70 - 125	Recovery	=	74.30%
36) 1,2-Dichloropropane-d6	6.33	67	114345	37.40	ug/L	0.00
Spiked Amount	50.000	Range	70 - 120	Recovery	=	74.80%
41) Toluene-d8	7.57	98	310349	36.20	ug/L	0.00
Spiked Amount	50.000	Range	80 - 120	Recovery	=	72.40%#
43) trans-1,3-Dichloropropene-	7.85	79	48492	35.52	ug/L	0.00
Spiked Amount	50.000	Range	60 - 125	Recovery	=	71.04%
47) 2-Hexanone-d5	8.31	63	94339	78.50	ug/L	0.00
Spiked Amount	100.000	Range	45 - 130	Recovery	=	78.50%
57) 1,1,2,2-Tetrachloroethane-	10.43	84	150440	35.29	ug/L	0.00
Spiked Amount	50.000	Range	65 - 120	Recovery	=	70.58%
64) 1,2-Dichlorobenzene-d4	11.87	152	150069	39.31	ug/L	0.00
Spiked Amount	50.000	Range	80 - 120	Recovery	=	78.62%#

Target Compounds

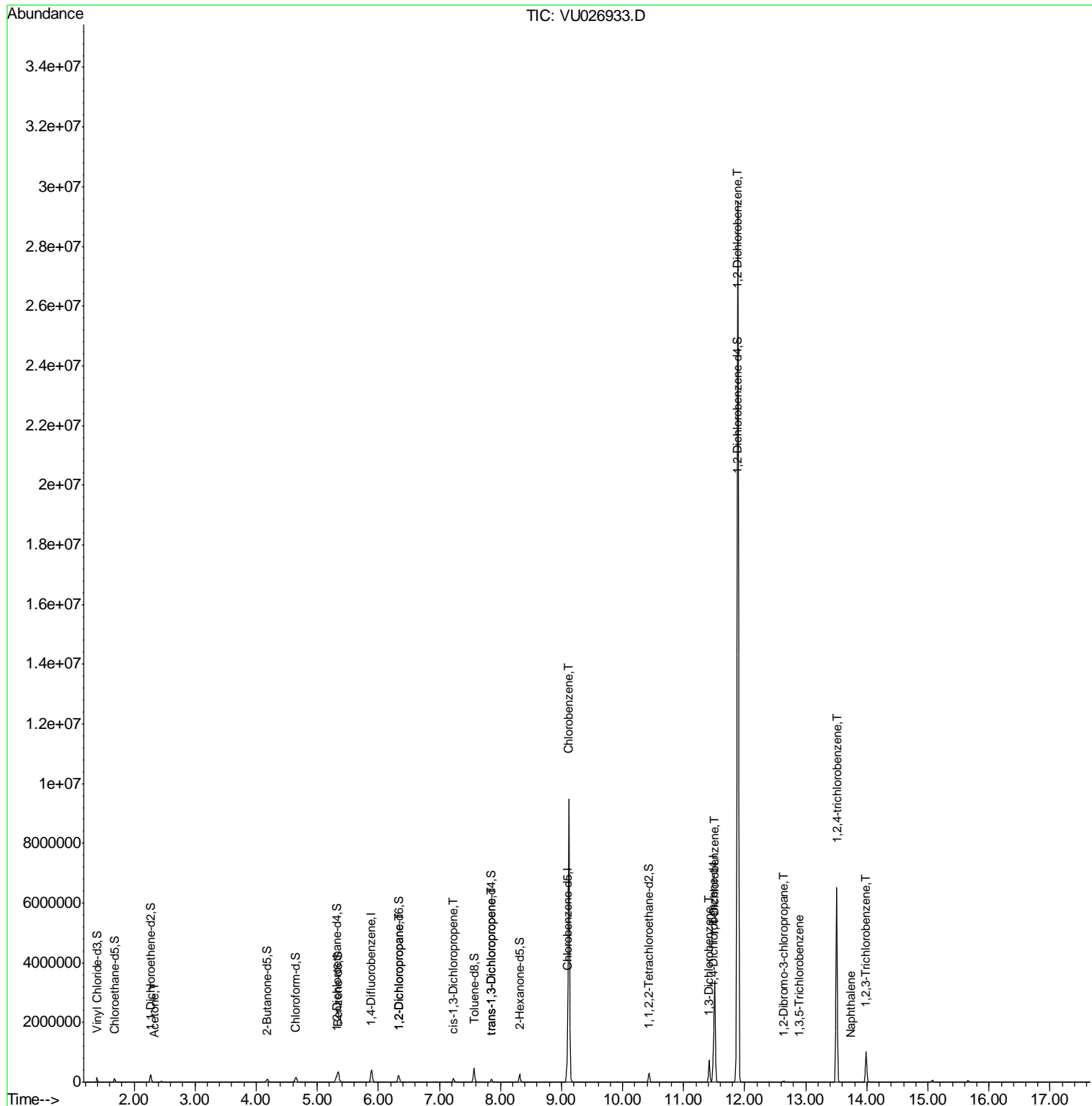
Target Compounds	R.T.	QIon	Response	Conc	Units	Qvalue
13) Acetone	2.32	43	1971	1.189	ug/L	97
37) 1,2-Dichloropropane	6.33	63	11765	4.079	ug/L #	86
39) cis-1,3-Dichloropropene	7.23	75	2804	0.688	ug/L #	57
44) trans-1,3-Dichloropropene	7.85	75	2132	0.559	ug/L	95
51) Chlorobenzene	9.12	112	5136146	712.457	ug/L	99
62) 1,3-Dichlorobenzene	11.42	146	313199	55.981	ug/L	99
63) 1,4-Dichlorobenzene	11.51	146	1377887	223.664	ug/L	99
65) 1,2-Dichlorobenzene	11.89	146	12798834	2066.047	ug/L	97
66) 1,2-Dibromo-3-chloropropan	12.64	75	5706	6.071	ug/L #	1
67) 1,3,5-Trichlorobenzene	12.89	180	5818	1.344	ug/L	100
68) 1,2,4-trichlorobenzene	13.50	180	2039573	546.685	ug/L	100
69) Naphthalene	13.75	128	3852	0.350	ug/L	96
70) 1,2,3-Trichlorobenzene	13.99	180	329918	80.303	ug/L	99

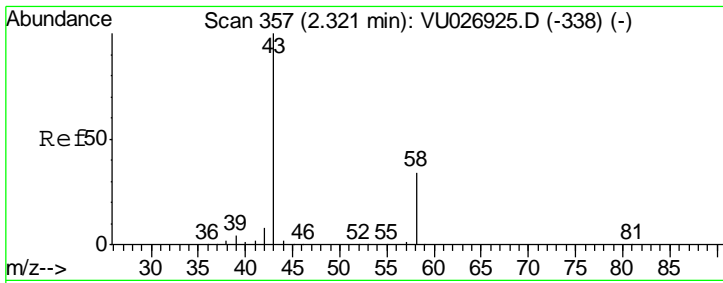
(#) = qualifier out of range (m) = manual integration (+) = signals summed

Data File : VU026933.D  
Acq On : 20 Sep 2018 13:06  
Operator : MD/SY  
Sample : J4893-03  
Misc : 5.0mL/MSVOA\_U/WATER  
ALS Vial : 10 Sample Multiplier: 1

Instrument :  
MSVOA\_U  
Client Sampled :  
C08K2

Quant Time: Sep 21 04:25:28 2018  
Quant Method : Z:\VOASRV\HPCHEM1\MSVOA\_U\METHOD\SOMULM091718WMA.M  
Quant Title : VOC Analysis  
QLast Update : Fri Sep 21 04:24:07 2018  
Response via : Initial Calibration

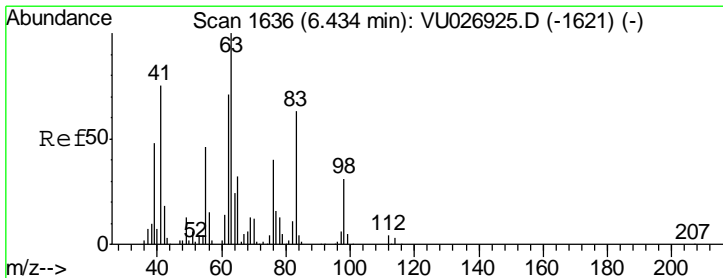
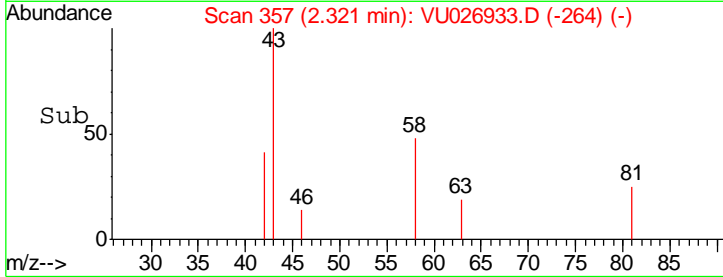
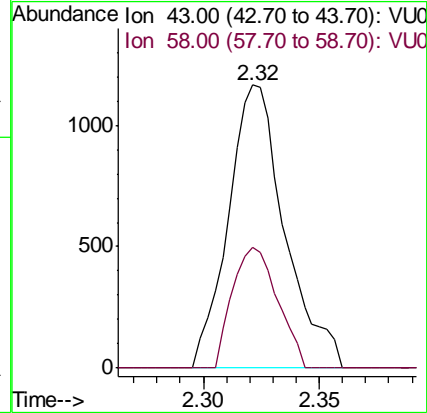
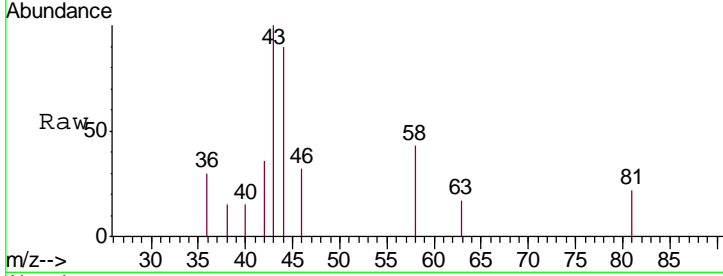




#13  
 Acetone  
 Concen: 1.189 ug/L  
 RT: 2.32 min Scan# 357  
 Delta R.T. 0.00 min  
 Lab File: VU026933.D  
 Acq: 20 Sep 2018 13:06

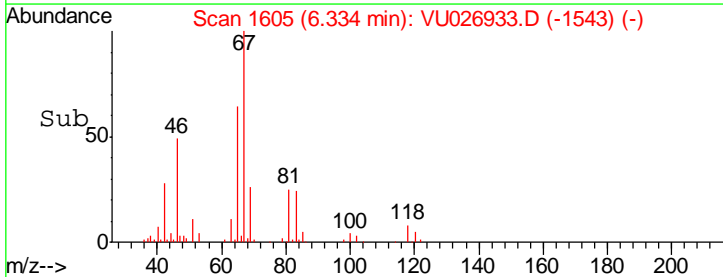
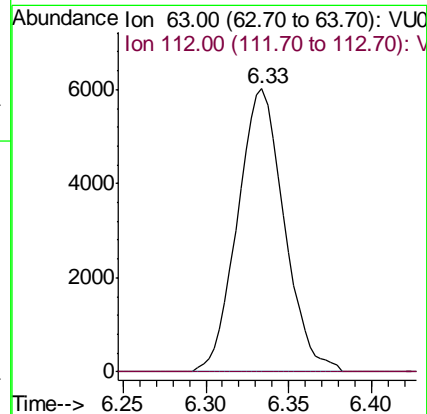
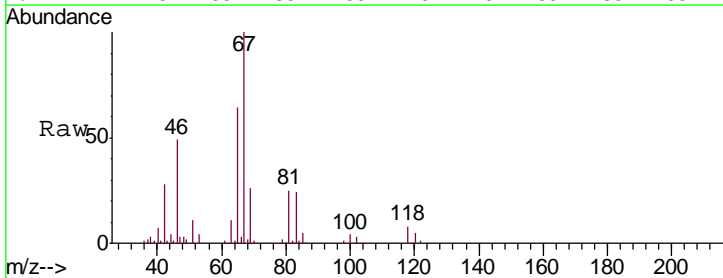
Instrument :  
 MSVOA\_U  
 ClientSampled :  
 C08K2

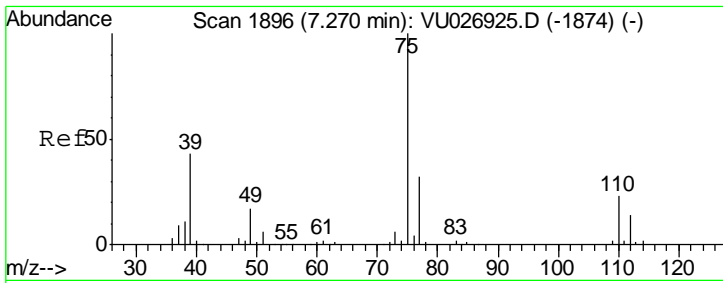
Tgt Ion: 43 Resp: 1971  
 Ion Ratio Lower Upper  
 43 100  
 58 34.1 0.0 64.6



#37  
 1,2-Dichloropropane  
 Concen: 4.079 ug/L  
 RT: 6.33 min Scan# 1605  
 Delta R.T. -0.10 min  
 Lab File: VU026933.D  
 Acq: 20 Sep 2018 13:06

Tgt Ion: 63 Resp: 11765  
 Ion Ratio Lower Upper  
 63 100  
 112 0.0 3.7 5.5#

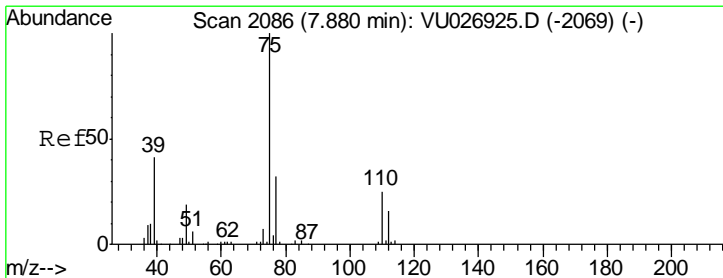
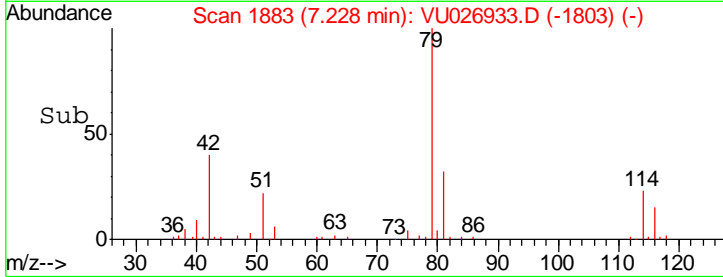
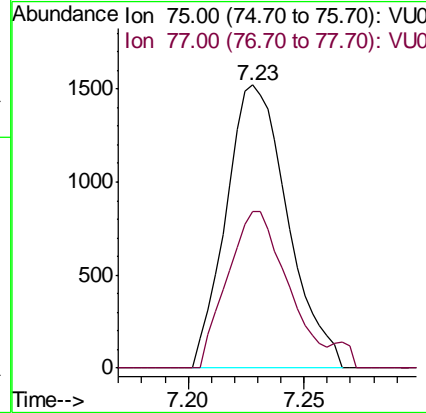
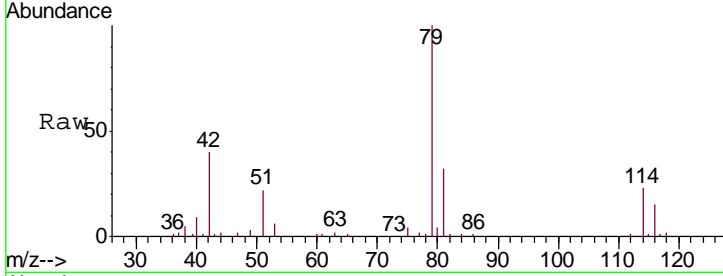




#39  
 cis-1,3-Dichloropropene  
 Concen: 0.688 ug/L  
 RT: 7.23 min Scan# 1883  
 Delta R.T. -0.04 min  
 Lab File: VU026933.D  
 Acq: 20 Sep 2018 13:06

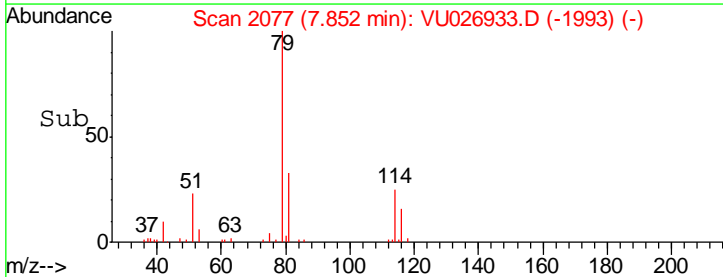
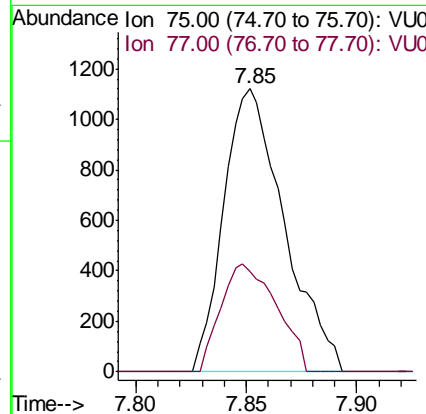
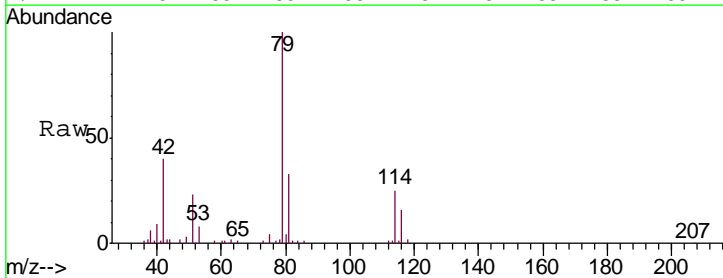
Instrument :  
 MSVOA\_U  
 ClientSampled :  
 C08K2

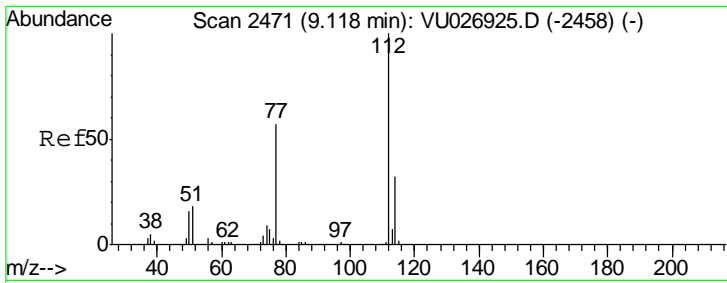
Tgt Ion: 75 Resp: 2804  
 Ion Ratio Lower Upper  
 75 100  
 77 55.6 22.1 41.1#



#44  
 trans-1,3-Dichloropropene  
 Concen: 0.559 ug/L  
 RT: 7.85 min Scan# 2077  
 Delta R.T. -0.03 min  
 Lab File: VU026933.D  
 Acq: 20 Sep 2018 13:06

Tgt Ion: 75 Resp: 2132  
 Ion Ratio Lower Upper  
 75 100  
 77 35.4 22.8 42.4

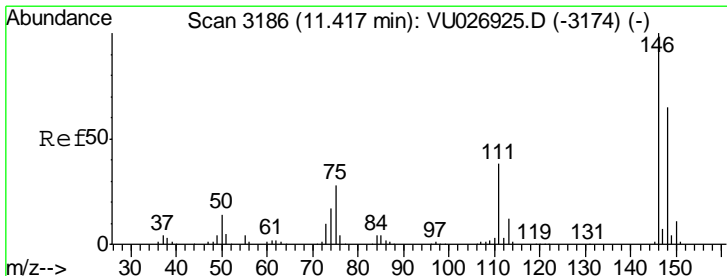
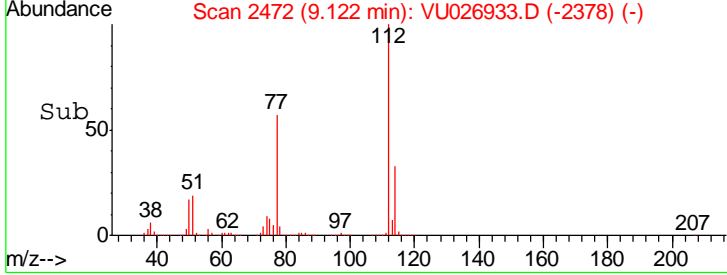
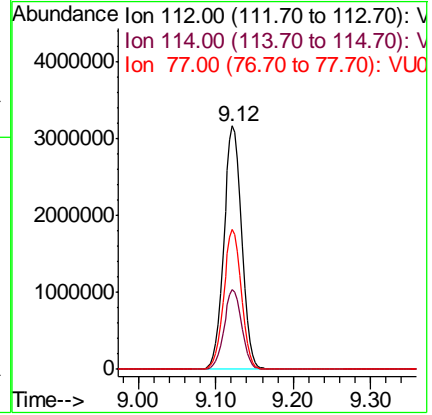
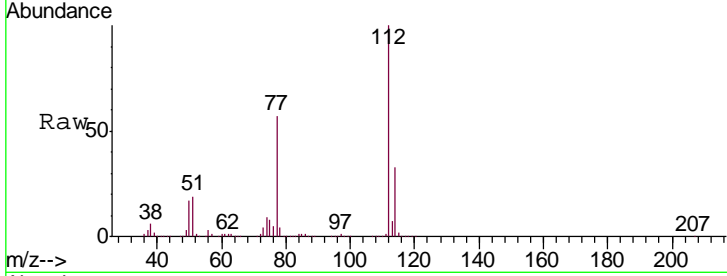




#51  
 Chlorobenzene  
 Concen: 712.457 ug/L  
 RT: 9.12 min Scan# 2472  
 Delta R.T. 0.00 min  
 Lab File: VU026933.D  
 Acq: 20 Sep 2018 13:06

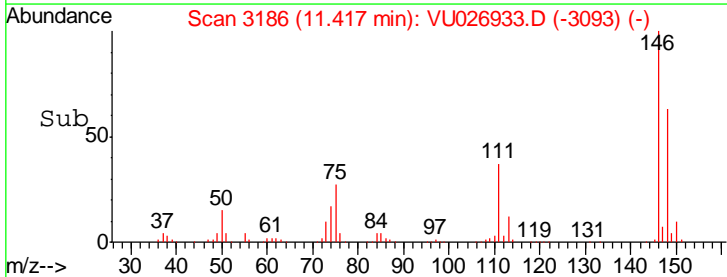
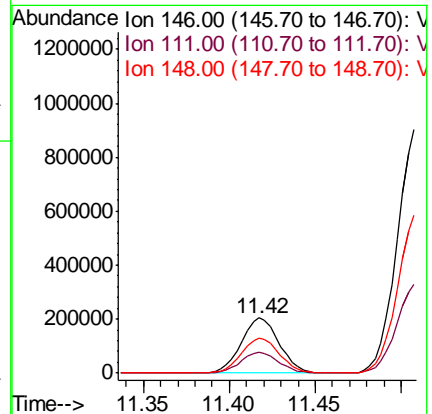
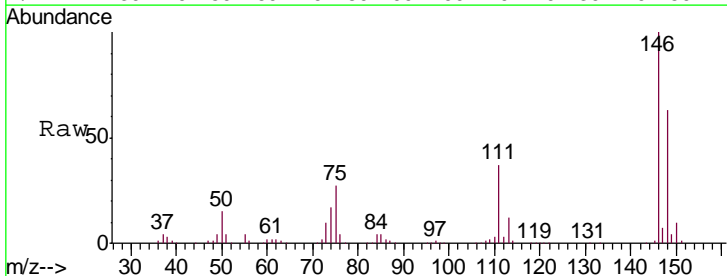
Instrument :  
 MSVOA\_U  
 ClientSampled :  
 C08K2

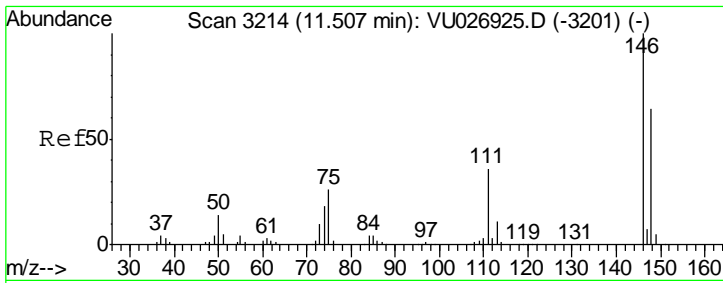
Tgt Ion	Resp	Lower	Upper
112	5136146		
114	32.7	22.3	41.5
77	57.3	45.1	67.7



#62  
 1,3-Dichlorobenzene  
 Concen: 55.981 ug/L  
 RT: 11.42 min Scan# 3186  
 Delta R.T. 0.00 min  
 Lab File: VU026933.D  
 Acq: 20 Sep 2018 13:06

Tgt Ion	Resp	Lower	Upper
146	313199		
111	37.4	26.7	49.7
148	63.1	44.9	83.5



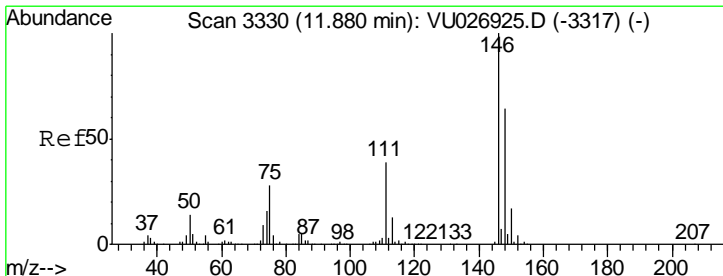
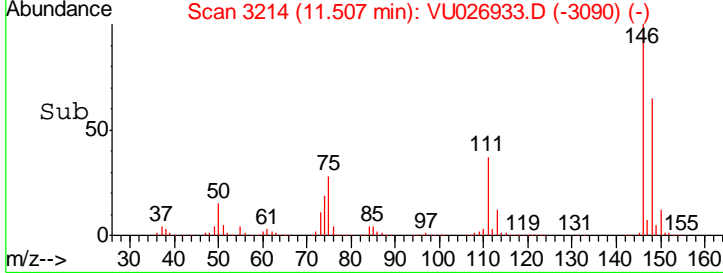
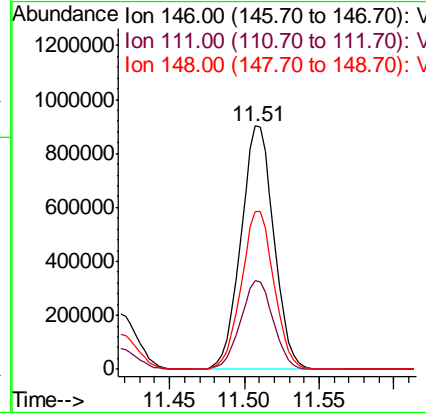
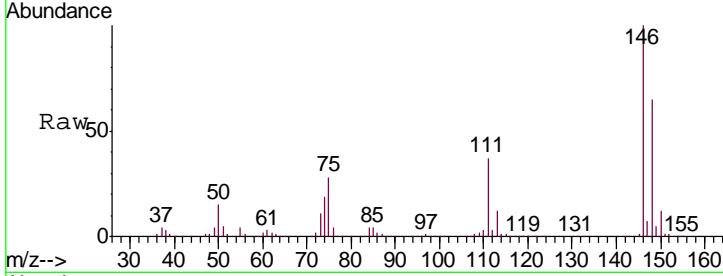


#63  
 1,4-Dichlorobenzene  
 Concen: 223.664 ug/L  
 RT: 11.51 min Scan# 3214  
 Delta R.T. 0.00 min  
 Lab File: VU026933.D  
 Acq: 20 Sep 2018 13:06

Instrument :  
 MSVOA\_U  
 ClientSampled :  
 C08K2

Tgt Ion:146 Resp: 1377887

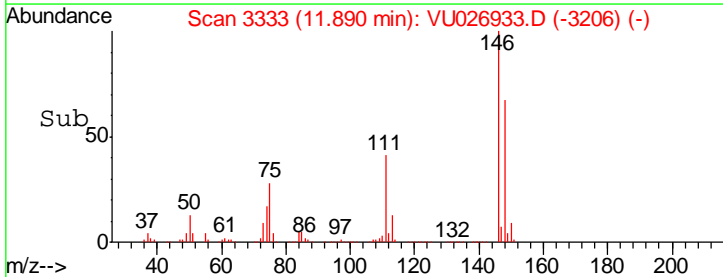
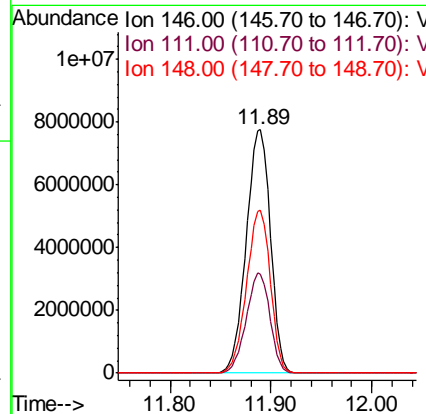
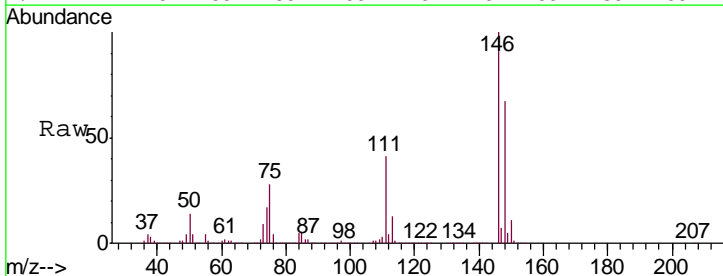
Ion	Ratio	Lower	Upper
146	100		
111	36.7	26.0	48.2
148	64.9	45.8	85.2

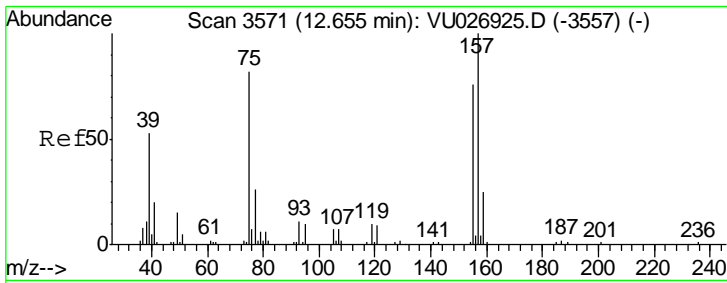


#65  
 1,2-Dichlorobenzene  
 Concen: 2066.047 ug/L  
 RT: 11.89 min Scan# 3333  
 Delta R.T. 0.01 min  
 Lab File: VU026933.D  
 Acq: 20 Sep 2018 13:06

Tgt Ion:146 Resp:12798834

Ion	Ratio	Lower	Upper
146	100		
111	40.8	31.4	47.0
148	67.0	51.4	77.2

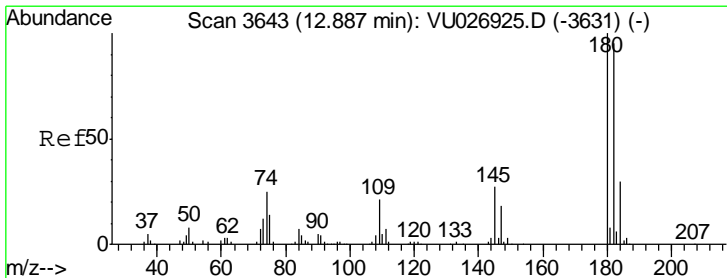
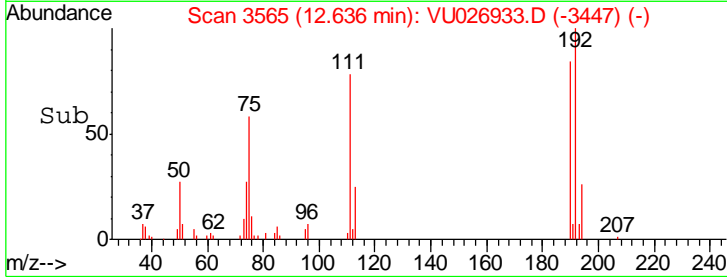
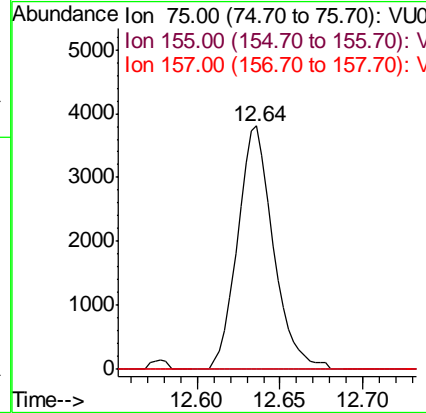
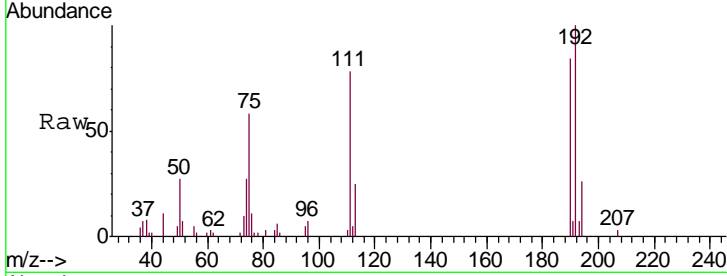




#66  
 1,2-Dibromo-3-chloropropane  
 Concen: 6.071 ug/L  
 RT: 12.64 min Scan# 3565  
 Delta R.T. -0.02 min  
 Lab File: VU026933.D  
 Acq: 20 Sep 2018 13:06

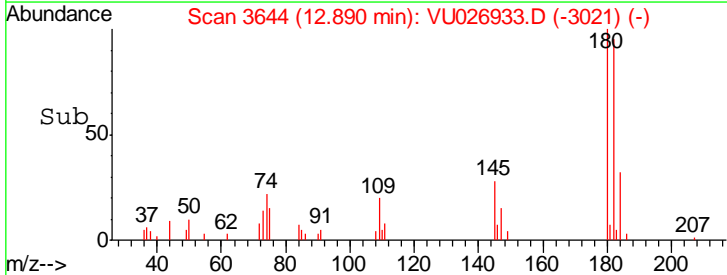
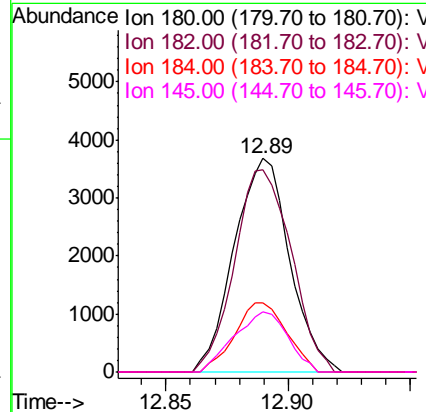
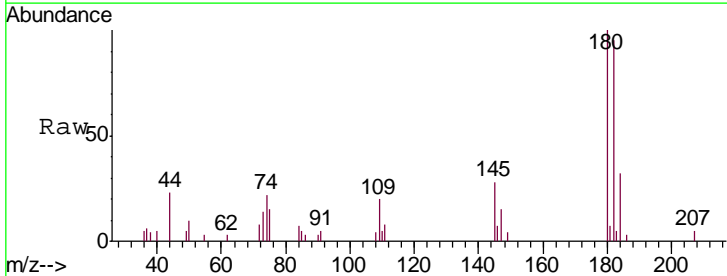
Instrument : MSVOA\_U  
 ClientSampleId : C08K2

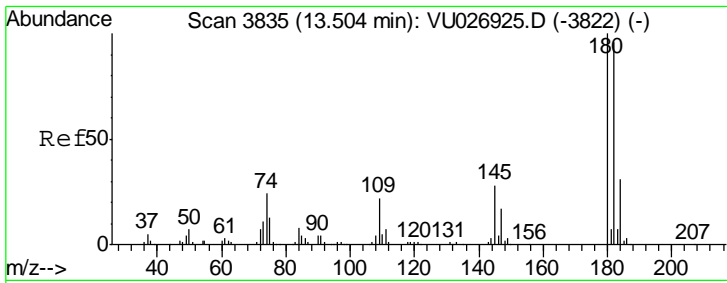
Tgt Ion	Resp	Lower	Upper
75	100		
155	0.0	69.5	104.3#
157	0.0	90.5	135.7#



#67  
 1,3,5-Trichlorobenzene  
 Concen: 1.344 ug/L  
 RT: 12.89 min Scan# 3644  
 Delta R.T. 0.00 min  
 Lab File: VU026933.D  
 Acq: 20 Sep 2018 13:06

Tgt Ion	Resp	Lower	Upper
180	100		
182	96.5	76.7	115.1
184	30.3	24.2	36.4
145	27.2	21.8	32.6

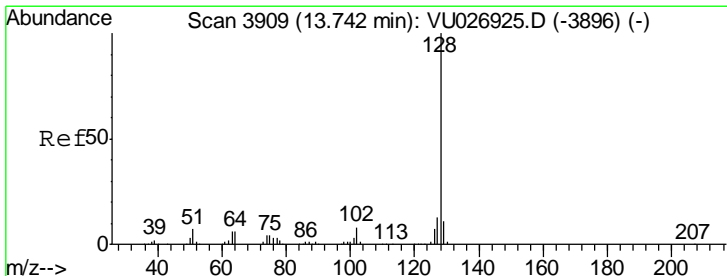
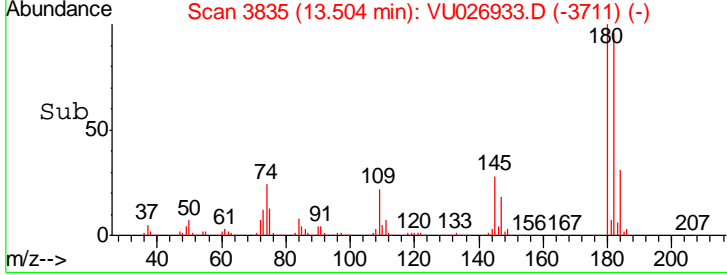
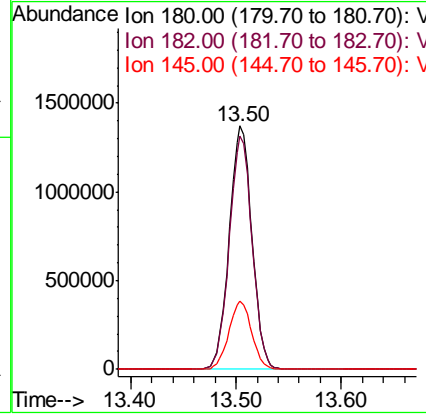
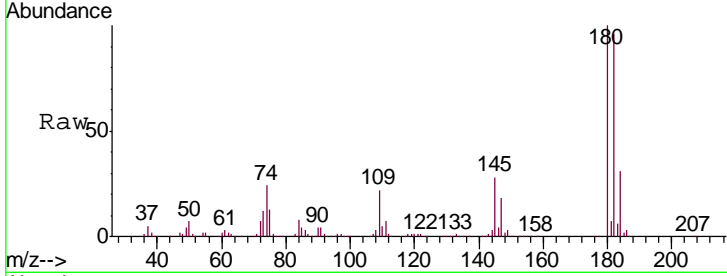




#68  
 1,2,4-trichlorobenzene  
 Concen: 546.685 ug/L  
 RT: 13.50 min Scan# 3835  
 Delta R.T. 0.00 min  
 Lab File: VU026933.D  
 Acq: 20 Sep 2018 13:06

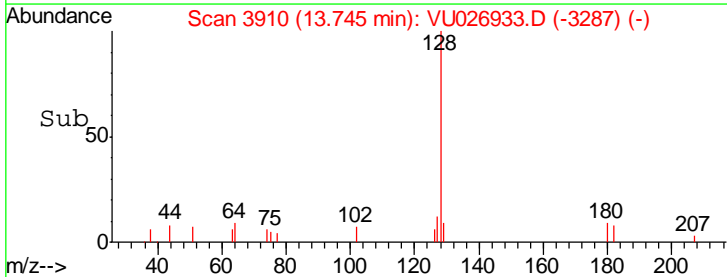
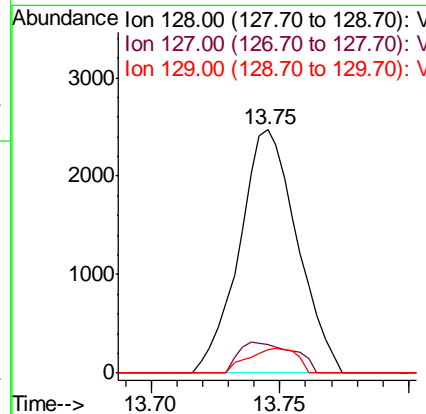
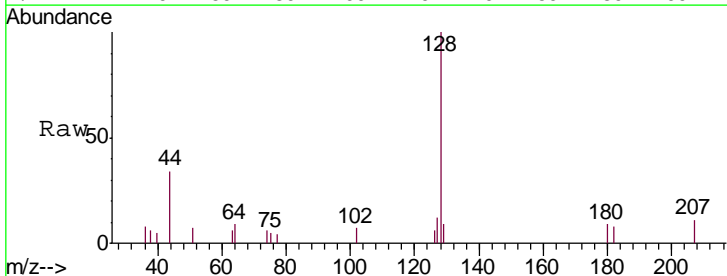
Instrument : MSVOA\_U  
 ClientSampled : C08K2

Tgt Ion	Resp	Lower	Upper
180	100		
182	96.0	76.8	115.2
145	28.0	22.2	33.2

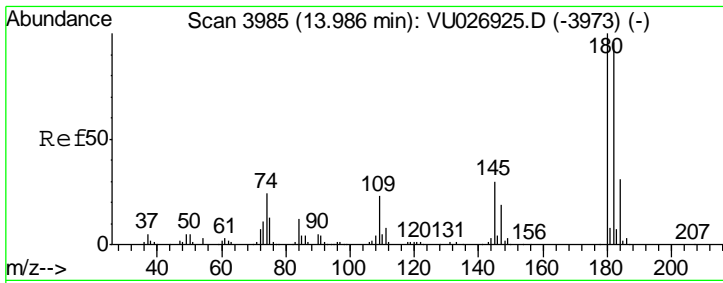


#69  
 Naphthalene  
 Concen: 0.350 ug/L  
 RT: 13.75 min Scan# 3910  
 Delta R.T. 0.00 min  
 Lab File: VU026933.D  
 Acq: 20 Sep 2018 13:06

Tgt Ion	Resp	Lower	Upper
128	100		
127	12.0	10.2	15.4
129	8.6	8.6	12.8







#70  
 1,2,3-Trichlorobenzene  
 Concen: 80.303 ug/L  
 RT: 13.99 min Scan# 3985  
 Delta R.T. 0.00 min  
 Lab File: VU026933.D  
 Acq: 20 Sep 2018 13:06

Instrument :  
 MSVOA\_U  
 ClientSampled :  
 C08K2

Tgt Ion:180 Resp: 329918

Ion	Ratio	Lower	Upper
180	100		
182	95.9	75.6	113.4
145	29.8	23.8	35.6

