

Data File : VU026954.D  
 Acq On : 20 Sep 2018 23:35  
 Operator : MD/SY  
 Sample : J5012-11 50X  
 Misc : 5.0mL/MSVOA\_U/WATER  
 ALS Vial : 32 Sample Multiplier: 1

Instrument :  
 MSVOA\_U  
 ClientSampleId :  
 C08N4

Quant Time: Sep 21 06:04:39 2018  
 Quant Method : Z:\VOASRV\HPCHEM1\MSVOA\_U\METHOD\SOMULM091718WMA.M  
 Quant Title : VOC Analysis  
 QLast Update : Fri Sep 21 04:24:07 2018  
 Response via : Initial Calibration

Internal Standards	R.T.	QIon	Response	Conc	Units	Dev(Min)
1) 1,4-Difluorobenzene	5.89	114	270029	50.00	ug/L	0.00
28) Chlorobenzene-d5	9.09	117	256336	50.00	ug/L	0.00
60) 1,4-Dichlorobenzene-d4	11.48	152	131436	50.00	ug/L	0.00

System Monitoring Compounds

4) Vinyl Chloride-d3	1.40	65	86182	43.14	ug/L	0.00
Spiked Amount	50.000	Range	60 - 135	Recovery	=	86.28%
7) Chloroethane-d5	1.67	69	74488	43.57	ug/L	0.00
Spiked Amount	50.000	Range	70 - 130	Recovery	=	87.14%
11) 1,1-Dichloroethene-d2	2.27	63	120485	31.88	ug/L	0.00
Spiked Amount	50.000	Range	60 - 125	Recovery	=	63.76%
21) 2-Butanone-d5	4.18	46	132042	99.61	ug/L	0.00
Spiked Amount	100.000	Range	40 - 130	Recovery	=	99.61%
24) Chloroform-d	4.65	84	156931	42.35	ug/L	0.00
Spiked Amount	50.000	Range	70 - 125	Recovery	=	84.70%
26) 1,2-Dichloroethane-d4	5.31	65	101370	43.45	ug/L	0.00
Spiked Amount	50.000	Range	70 - 125	Recovery	=	86.90%
32) Benzene-d6	5.34	84	324874	45.22	ug/L	0.00
Spiked Amount	50.000	Range	70 - 125	Recovery	=	90.44%
36) 1,2-Dichloropropane-d6	6.33	67	103941	44.91	ug/L	0.00
Spiked Amount	50.000	Range	70 - 120	Recovery	=	89.82%
41) Toluene-d8	7.57	98	281688	43.40	ug/L	0.00
Spiked Amount	50.000	Range	80 - 120	Recovery	=	86.80%
43) trans-1,3-Dichloropropene-	7.85	79	43721	42.31	ug/L	0.00
Spiked Amount	50.000	Range	60 - 125	Recovery	=	84.62%
47) 2-Hexanone-d5	8.31	63	96650	106.24	ug/L	0.00
Spiked Amount	100.000	Range	45 - 130	Recovery	=	106.24%
57) 1,1,2,2-Tetrachloroethane-	10.43	84	143833	44.57	ug/L	0.00
Spiked Amount	50.000	Range	65 - 120	Recovery	=	89.14%
64) 1,2-Dichlorobenzene-d4	11.86	152	132856	48.59	ug/L	0.00
Spiked Amount	50.000	Range	80 - 120	Recovery	=	97.18%

Target Compounds

						Qvalue
10) 1,1,2-Trichloro-1,2,2-trif	2.26	101	1060	0.569	ug/L #	18
13) Acetone	2.32	43	3693	2.834	ug/L	90
16) Methylene chloride	2.70	84	1263	0.567	ug/L	92
25) Chloroform	4.67	83	9410	2.498	ug/L	92
27) 1,2-Dichloroethane	5.39	62	20627	7.016	ug/L #	72
33) Benzene	5.39	78	2529435	318.272	ug/L	100
37) 1,2-Dichloropropane	6.33	63	10793	4.944	ug/L #	86
39) cis-1,3-Dichloropropene	7.23	75	2352	0.763	ug/L #	62
44) trans-1,3-Dichloropropene	7.85	75	1857	0.643	ug/L	99
48) 2-Hexanone	8.31	43	10827	5.174	ug/L #	67
51) Chlorobenzene	9.12	112	6589827	1207.560	ug/L	99
59) 1,2,3-Trichloropropane	11.42	75	28202	10.784	ug/L #	43
62) 1,3-Dichlorobenzene	11.42	146	105808	26.407	ug/L	98
63) 1,4-Dichlorobenzene	11.51	146	2615066	592.717	ug/L	98
65) 1,2-Dichlorobenzene	11.88	146	2475254	557.921	ug/L	100
67) 1,3,5-Trichlorobenzene	13.50	180	49923	16.101	ug/L	99
68) 1,2,4-trichlorobenzene	13.50	180	49923	18.685	ug/L	99

Data Path : Z:\VOASRV\HPCHEM1\MSVOA\_U\DATA\VU092118\  
Quantitation Report (Not Reviewed)

Data File : VU026954.D  
Acq On : 20 Sep 2018 23:35  
Operator : MD/SY  
Sample : J5012-11 50X  
Misc : 5.0mL/MSVOA\_U/WATER  
ALS Vial : 32 Sample Multiplier: 1

Instrument :  
MSVOA\_U  
ClientSampleId :  
C08N4

Quant Time: Sep 21 06:04:39 2018  
Quant Method : Z:\VOASRV\HPCHEM1\MSVOA\_U\METHOD\SOMULM091718WMA.M  
Quant Title : VOC Analysis  
QLast Update : Fri Sep 21 04:24:07 2018  
Response via : Initial Calibration

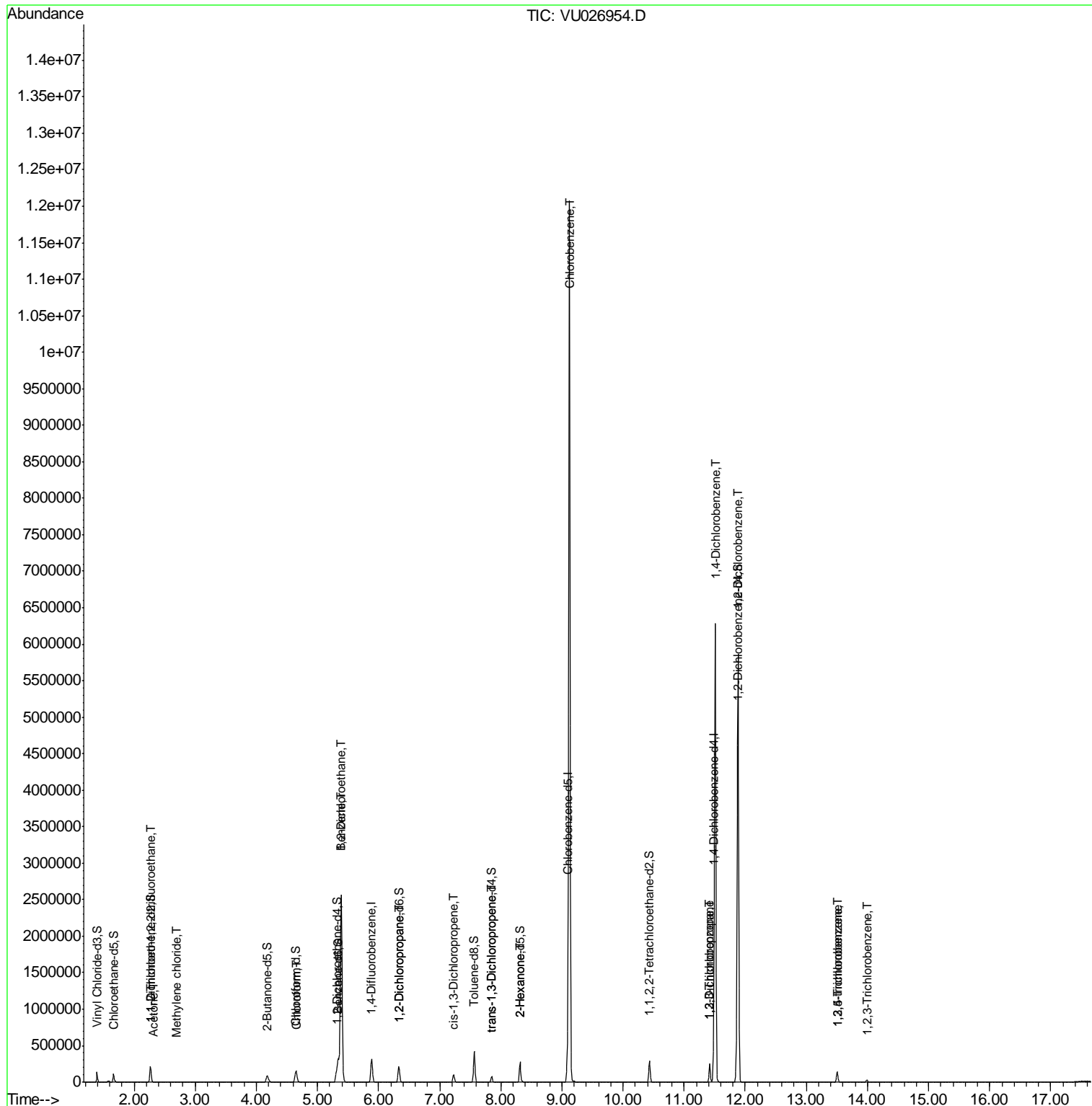
Internal Standards	R.T.	QIon	Response	Conc	Units	Dev(Min)
70) 1,2,3-Trichlorobenzene	13.99	180	12630	4.293	ug/L	98

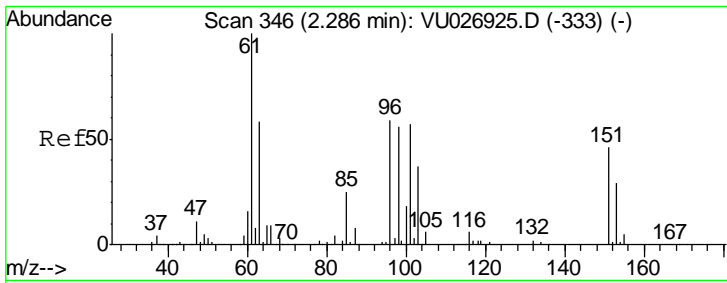
(#) = qualifier out of range (m) = manual integration (+) = signals summed

Data File : VU026954.D  
Acq On : 20 Sep 2018 23:35  
Operator : MD/SY  
Sample : J5012-11 50X  
Misc : 5.0mL/MSVOA\_U/WATER  
ALS Vial : 32 Sample Multiplier: 1

Instrument :  
MSVOA\_U  
ClientSampleId :  
C08N4

Quant Time: Sep 21 06:04:39 2018  
Quant Method : Z:\VOASRV\HPCHEM1\MSVOA\_U\METHOD\SOMULM091718WMA.M  
Quant Title : VOC Analysis  
QLast Update : Fri Sep 21 04:24:07 2018  
Response via : Initial Calibration

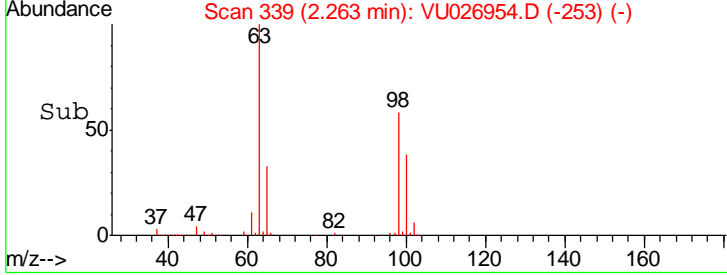
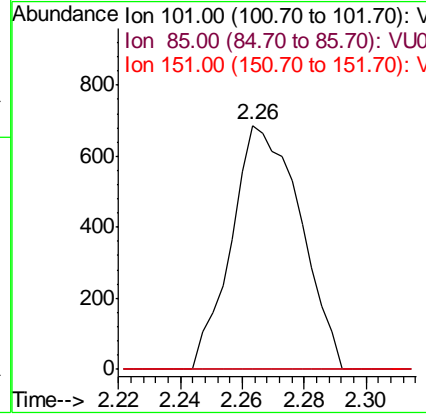
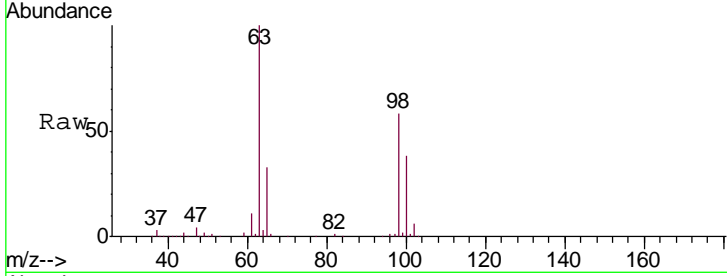




#10  
 1,1,2-Trichloro-1,2,2-trifluoroethane  
 Concen: 0.569 ug/L  
 RT: 2.26 min Scan# 339  
 Delta R.T. -0.02 min  
 Lab File: VU026954.D  
 Acq: 20 Sep 2018 23:35

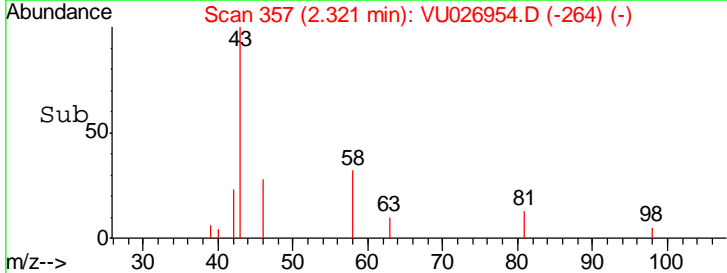
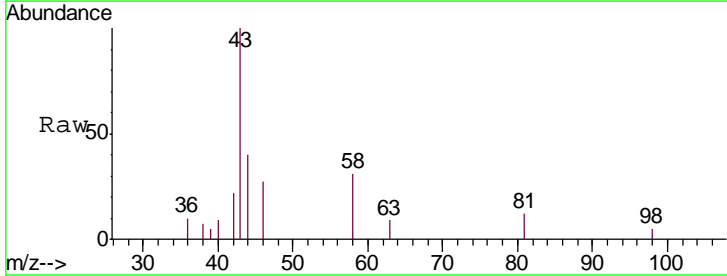
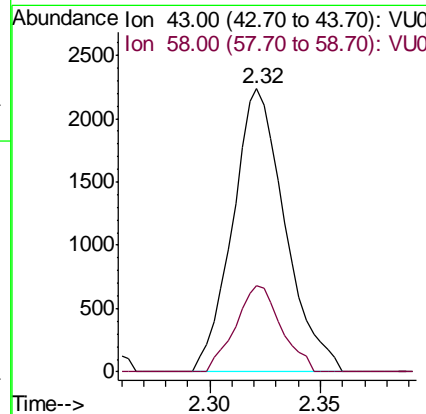
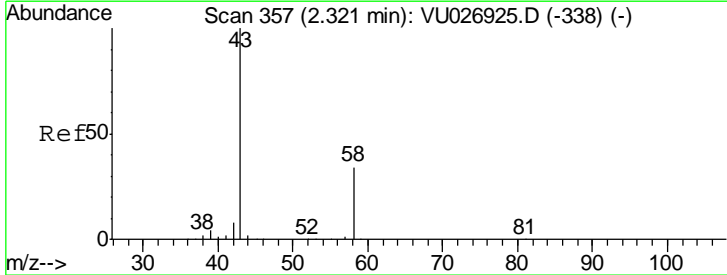
**Instrument :**  
 MSVOA\_U  
**ClientSampled :**  
 C08N4

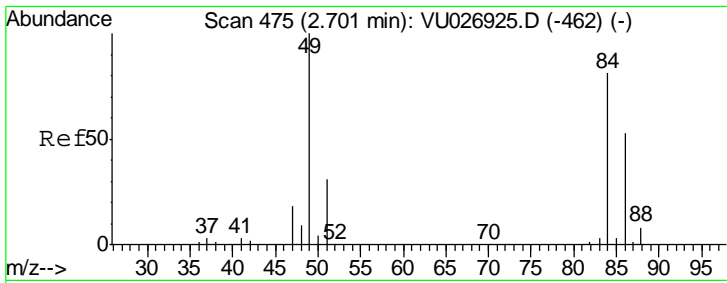
Tgt Ion	Resp	Lower	Upper
101	1060		
85	0.0	34.6	52.0#
151	0.0	63.0	94.4#



#13  
 Acetone  
 Concen: 2.834 ug/L  
 RT: 2.32 min Scan# 357  
 Delta R.T. -0.00 min  
 Lab File: VU026954.D  
 Acq: 20 Sep 2018 23:35

Tgt Ion	Resp	Lower	Upper
43	3693		
58	26.6	0.0	64.6

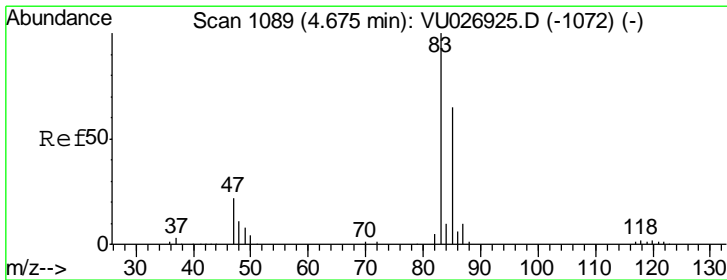
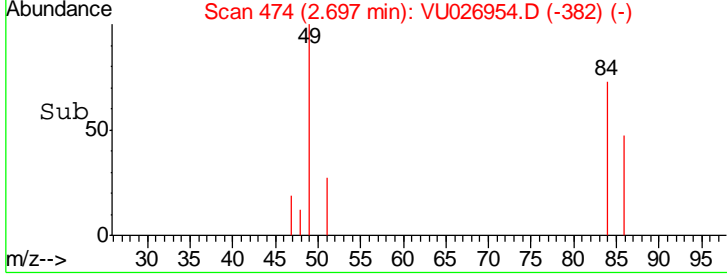
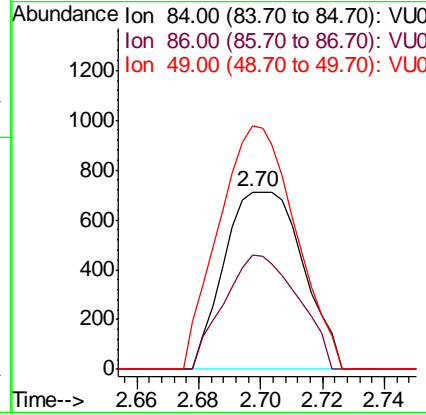
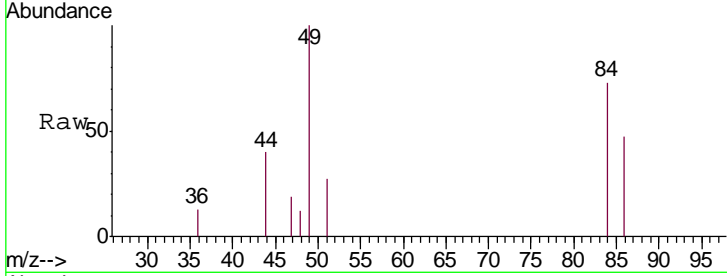




#16  
 Methylene chloride  
 Concen: 0.567 ug/L  
 RT: 2.70 min Scan# 474  
 Delta R.T. -0.00 min  
 Lab File: VU026954.D  
 Acq: 20 Sep 2018 23:35

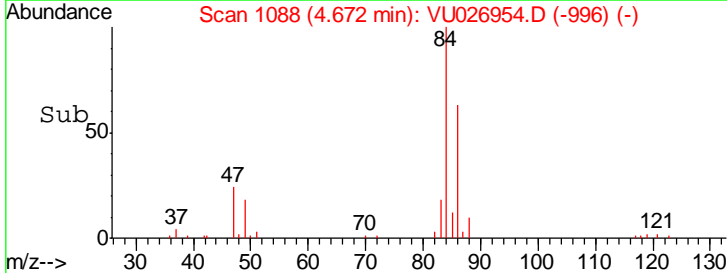
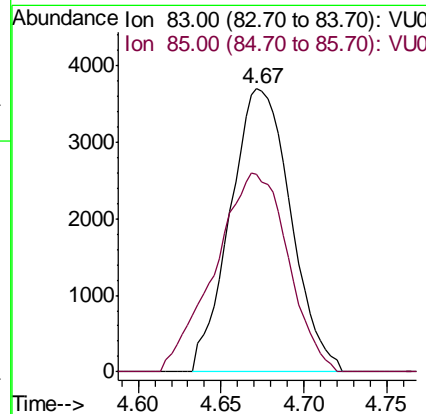
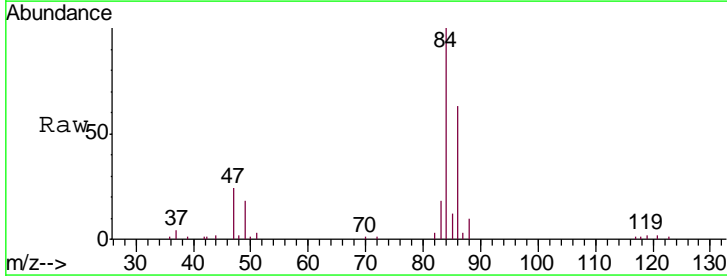
Instrument : MSVOA\_U  
 ClientSampled : C08N4

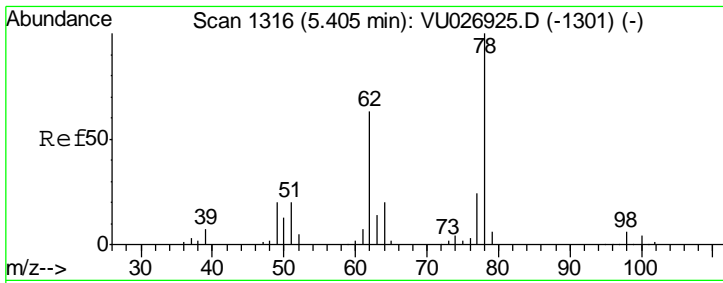
Tgt Ion	Resp	Lower	Upper
84	100		
86	64.2	45.3	84.1
49	137.0	86.2	160.2



#25  
 Chloroform  
 Concen: 2.498 ug/L  
 RT: 4.67 min Scan# 1088  
 Delta R.T. -0.00 min  
 Lab File: VU026954.D  
 Acq: 20 Sep 2018 23:35

Tgt Ion	Resp	Lower	Upper
83	100		
85	69.7	44.4	82.5

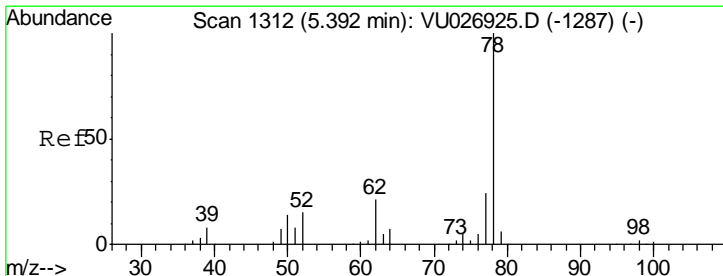
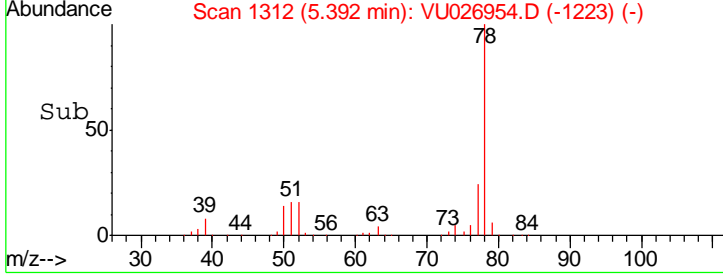
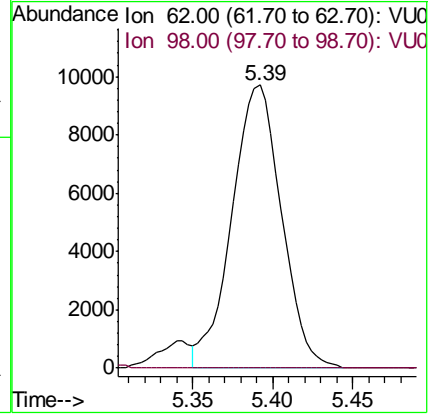
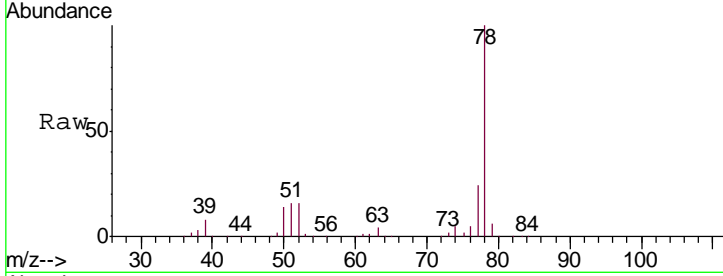




#27  
 1,2-Dichloroethane  
 Concen: 7.016 ug/L  
 RT: 5.39 min Scan# 1312  
 Delta R.T. -0.01 min  
 Lab File: VU026954.D  
 Acq: 20 Sep 2018 23:35

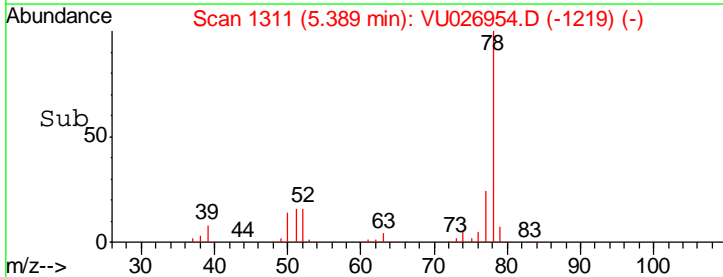
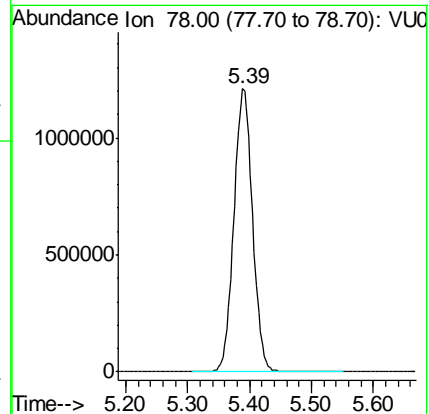
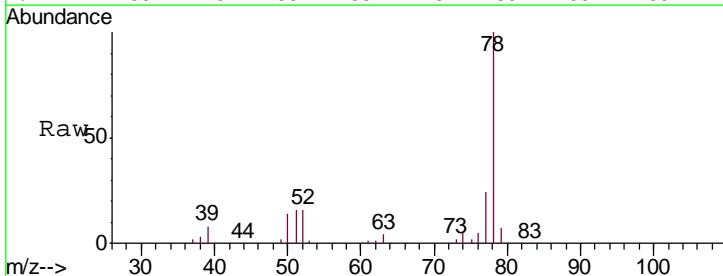
Instrument : MSVOA\_U  
 ClientSampled : C08N4

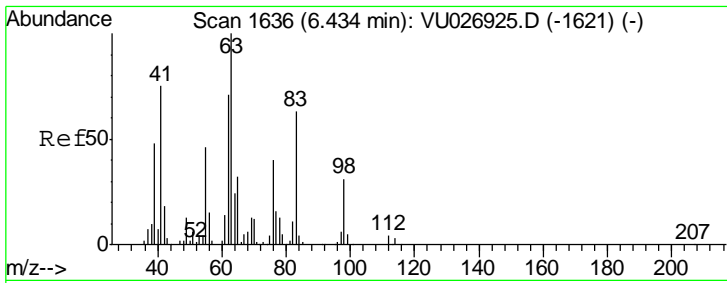
Tgt Ion	Resp	Lower	Upper
62	100		
98	0.0	8.2	12.4#



#33  
 Benzene  
 Concen: 318.272 ug/L  
 RT: 5.39 min Scan# 1311  
 Delta R.T. -0.00 min  
 Lab File: VU026954.D  
 Acq: 20 Sep 2018 23:35

Tgt Ion: 78 Resp: 2529435

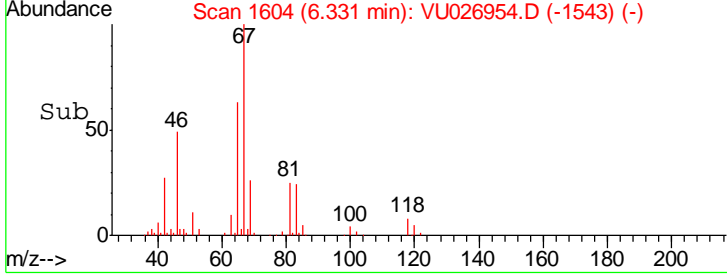
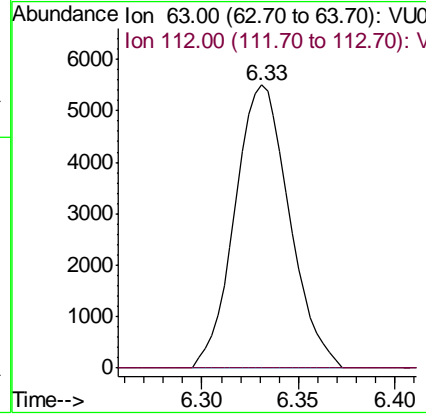
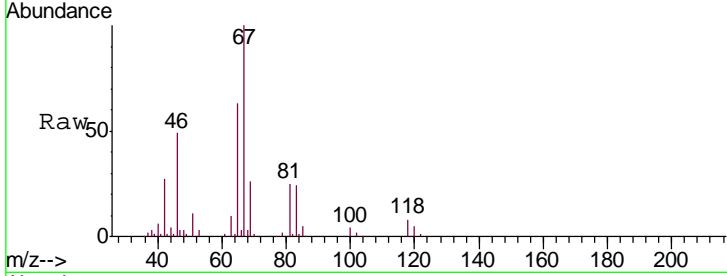




#37  
 1,2-Dichloropropane  
 Concen: 4.944 ug/L  
 RT: 6.33 min Scan# 1604  
 Delta R.T. -0.10 min  
 Lab File: VU026954.D  
 Acq: 20 Sep 2018 23:35

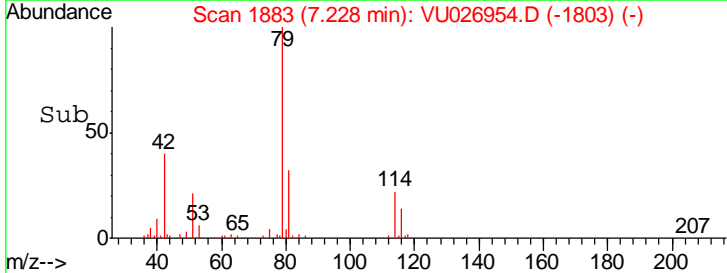
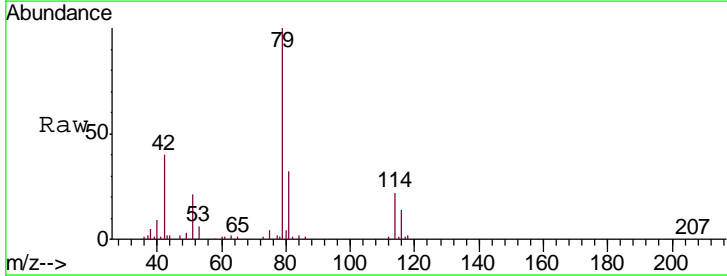
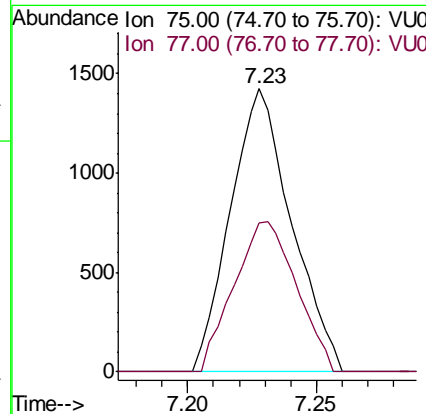
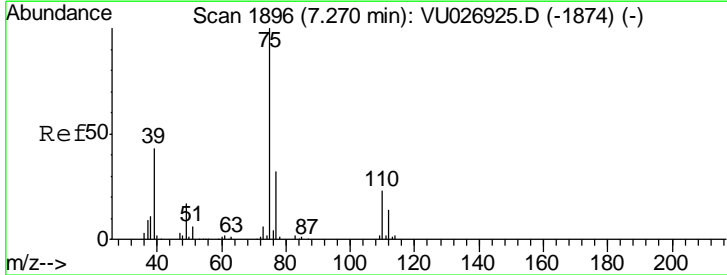
Instrument : MSVOA\_U  
 ClientSampled : C08N4

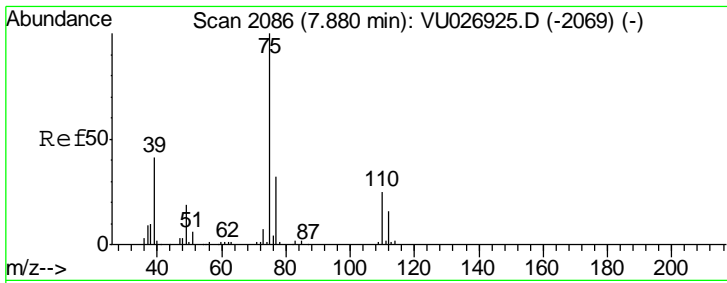
Tgt Ion: 63 Resp: 10793  
 Ion Ratio Lower Upper  
 63 100  
 112 0.0 3.7 5.5#



#39  
 cis-1,3-Dichloropropene  
 Concen: 0.763 ug/L  
 RT: 7.23 min Scan# 1883  
 Delta R.T. -0.04 min  
 Lab File: VU026954.D  
 Acq: 20 Sep 2018 23:35

Tgt Ion: 75 Resp: 2352  
 Ion Ratio Lower Upper  
 75 100  
 77 52.8 22.1 41.1#

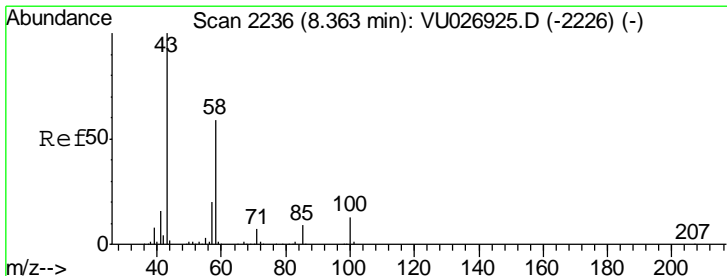
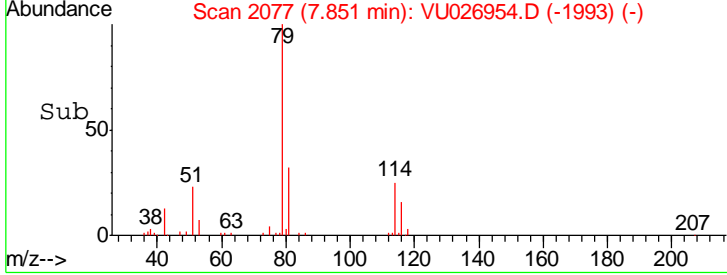
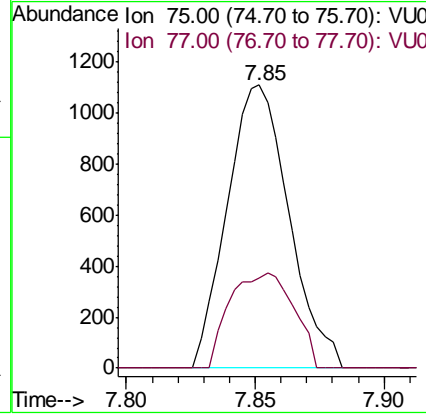
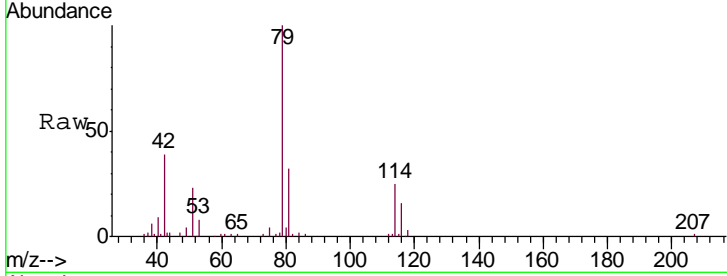




#44  
 trans-1,3-Dichloropropene  
 Concen: 0.643 ug/L  
 RT: 7.85 min Scan# 2077  
 Delta R.T. -0.03 min  
 Lab File: VU026954.D  
 Acq: 20 Sep 2018 23:35

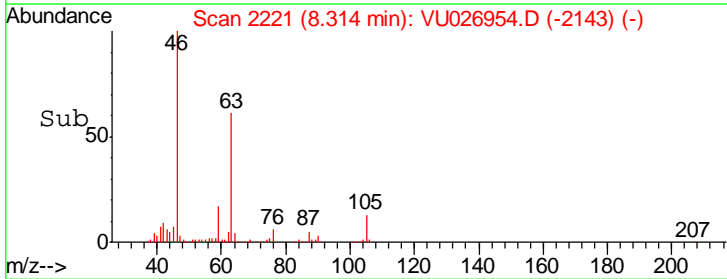
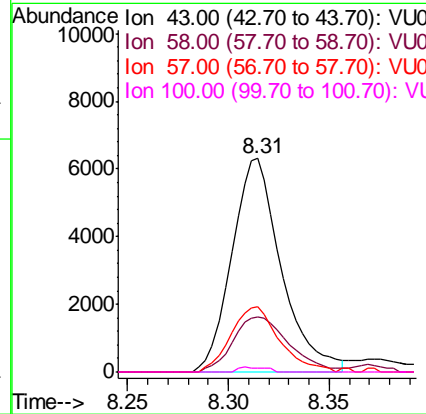
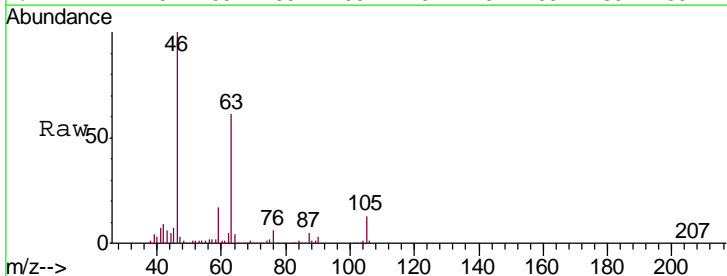
Instrument : MSVOA\_U  
 ClientSampled : C08N4

Tgt Ion: 75 Resp: 1857  
 Ion Ratio Lower Upper  
 75 100  
 77 32.0 22.8 42.4

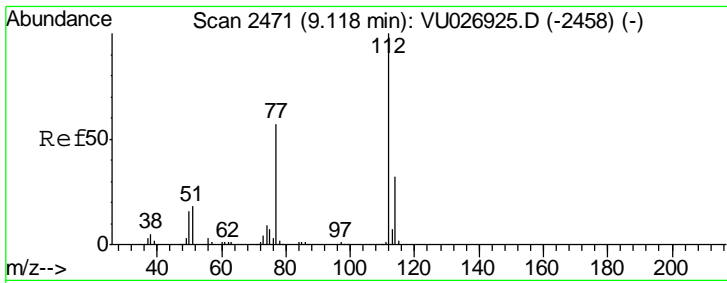


#48  
 2-Hexanone  
 Concen: 5.174 ug/L  
 RT: 8.31 min Scan# 2221  
 Delta R.T. -0.05 min  
 Lab File: VU026954.D  
 Acq: 20 Sep 2018 23:35

Tgt Ion: 43 Resp: 10827  
 Ion Ratio Lower Upper  
 43 100  
 58 29.5 44.9 67.3#  
 57 30.0 15.4 23.2#  
 100 1.1 10.2 15.4#



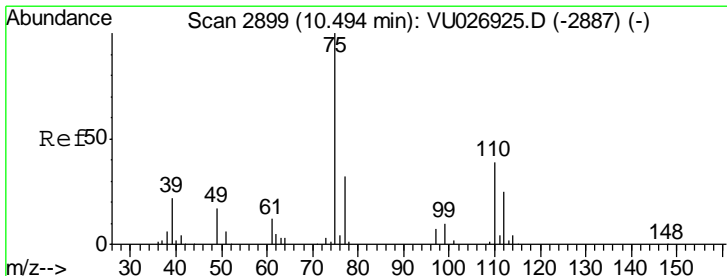
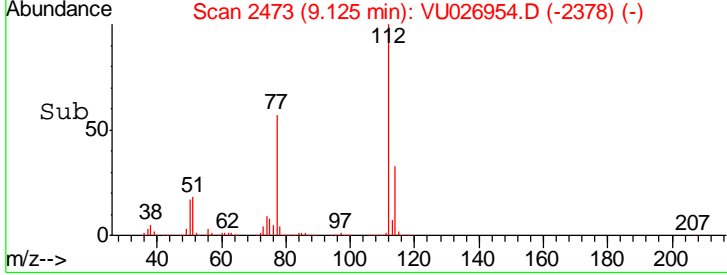
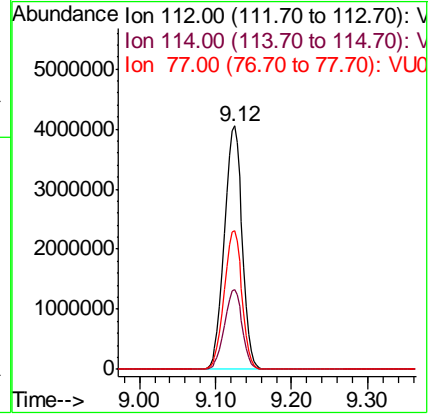
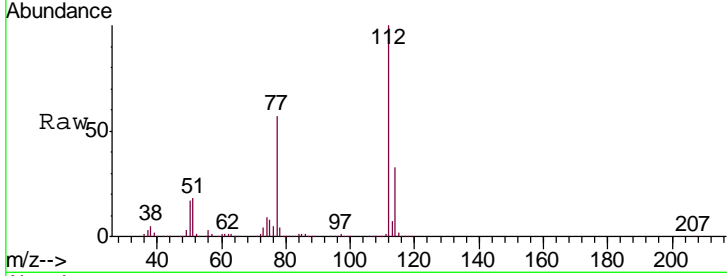




#51  
 Chlorobenzene  
 Concen: 1207.560 ug/L  
 RT: 9.12 min Scan# 2473  
 Delta R.T. 0.01 min  
 Lab File: VU026954.D  
 Acq: 20 Sep 2018 23:35

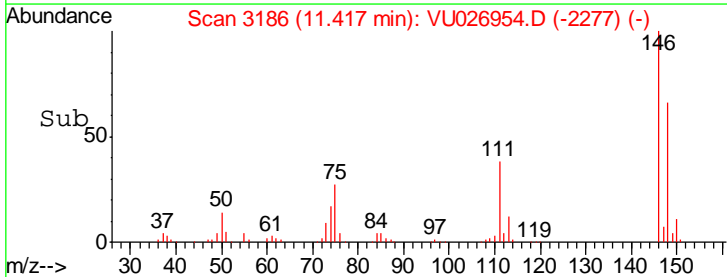
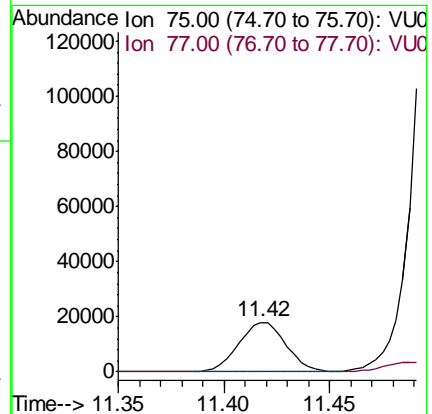
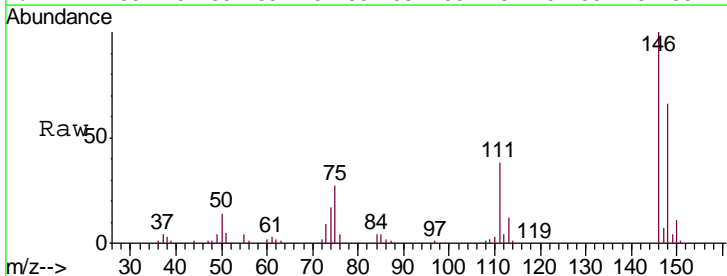
Instrument :  
 MSVOA\_U  
 ClientSampled :  
 C08N4

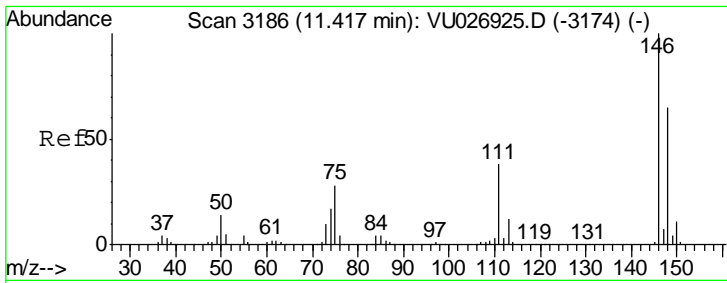
Tgt Ion	Resp	Lower	Upper
112	100		
114	33.0	22.3	41.5
77	57.1	45.1	67.7



#59  
 1,2,3-Trichloropropane  
 Concen: 10.784 ug/L  
 RT: 11.42 min Scan# 3186  
 Delta R.T. 0.92 min  
 Lab File: VU026954.D  
 Acq: 20 Sep 2018 23:35

Tgt Ion	Resp	Lower	Upper
75	100		
77	0.4	25.5	38.3#

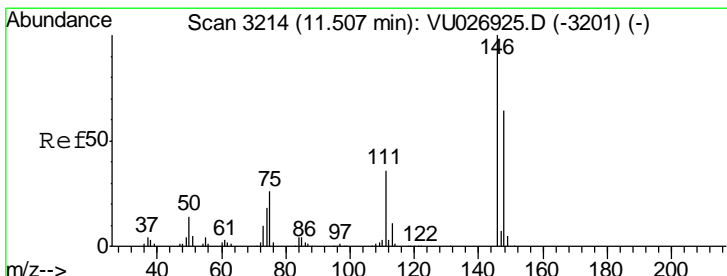
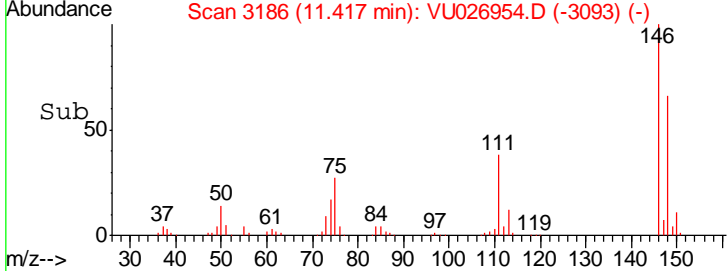
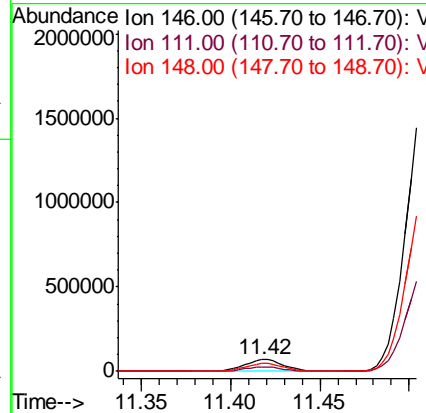
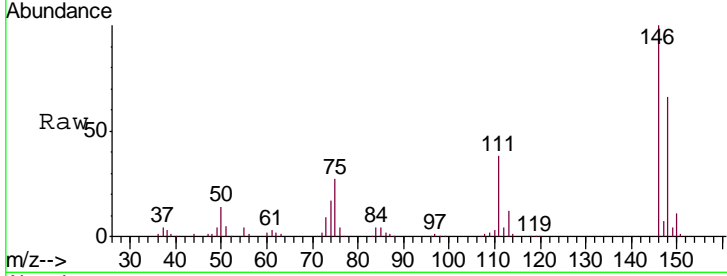




#62  
 1,3-Dichlorobenzene  
 Concen: 26.407 ug/L  
 RT: 11.42 min Scan# 3186  
 Delta R.T. -0.00 min  
 Lab File: VU026954.D  
 Acq: 20 Sep 2018 23:35

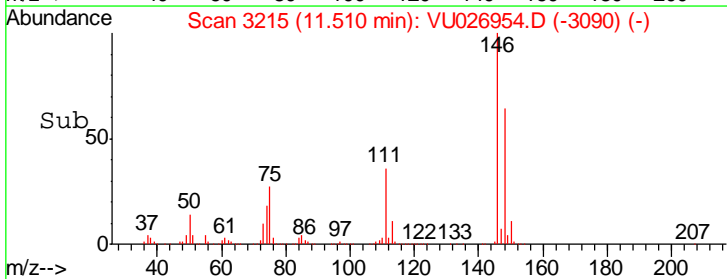
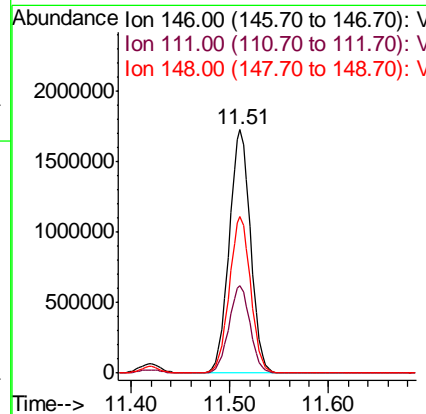
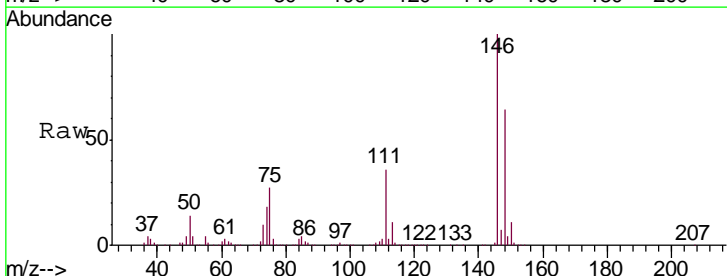
Instrument :  
 MSVOA\_U  
 ClientSampled :  
 C08N4

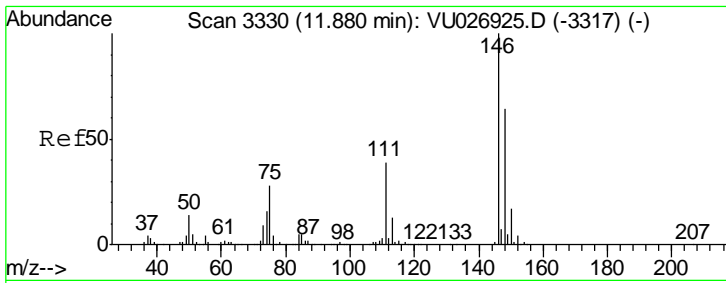
Tgt Ion	Resp	Lower	Upper
146	105808		
111	37.7	26.7	49.7
148	65.7	44.9	83.5



#63  
 1,4-Dichlorobenzene  
 Concen: 592.717 ug/L  
 RT: 11.51 min Scan# 3215  
 Delta R.T. 0.00 min  
 Lab File: VU026954.D  
 Acq: 20 Sep 2018 23:35

Tgt Ion	Resp	Lower	Upper
146	2615066		
111	35.9	26.0	48.2
148	64.2	45.8	85.2



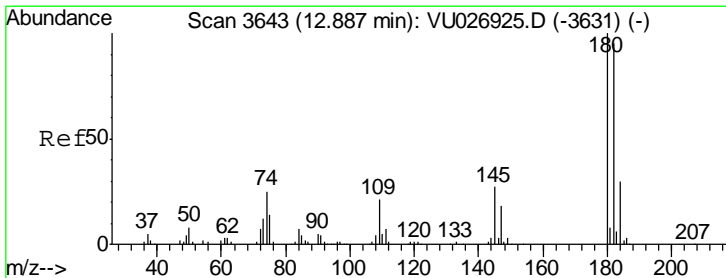
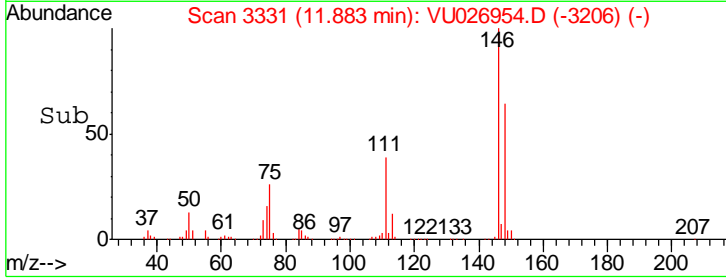
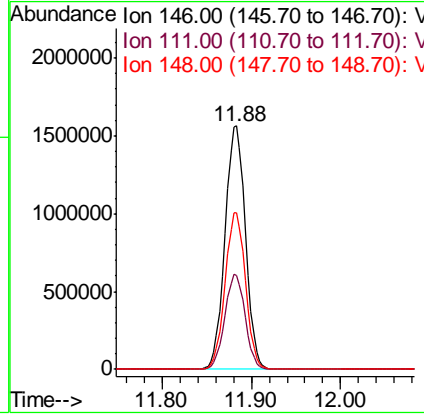
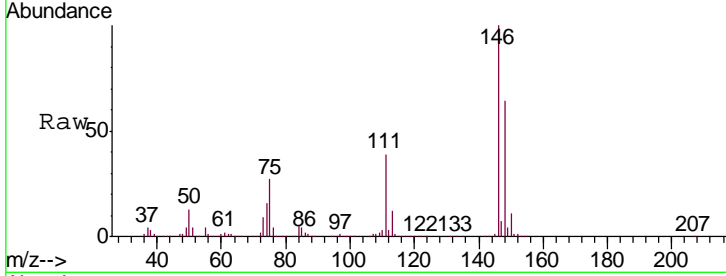


#65  
 1,2-Dichlorobenzene  
 Concen: 557.921 ug/L  
 RT: 11.88 min Scan# 3331  
 Delta R.T. 0.00 min  
 Lab File: VU026954.D  
 Acq: 20 Sep 2018 23:35

Instrument :  
 MSVOA\_U  
 ClientSampled :  
 C08N4

Tgt Ion:146 Resp: 2475254

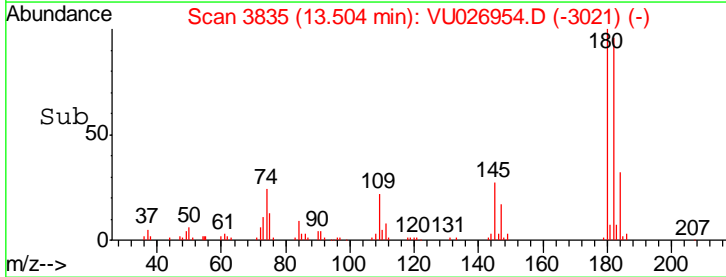
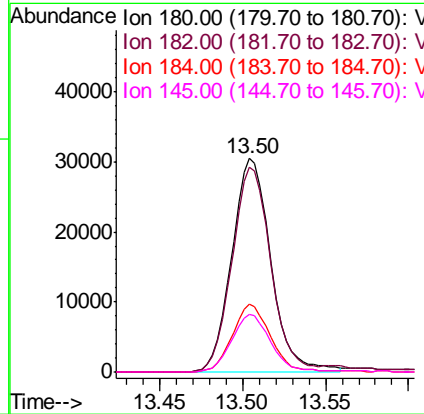
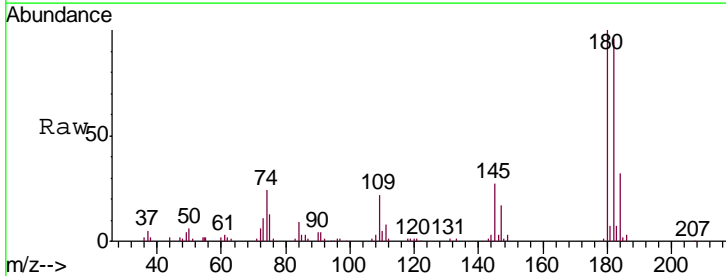
Ion	Ratio	Lower	Upper
146	100		
111	38.7	31.4	47.0
148	64.3	51.4	77.2

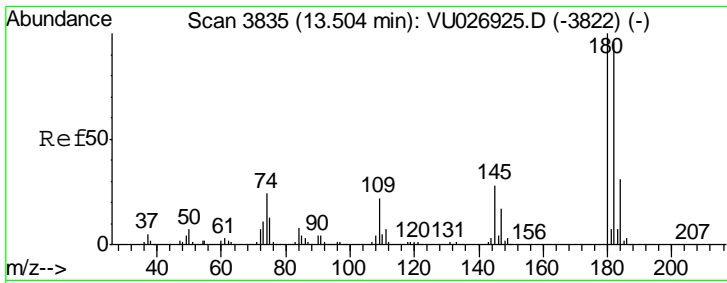


#67  
 1,3,5-Trichlorobenzene  
 Concen: 16.101 ug/L  
 RT: 13.50 min Scan# 3835  
 Delta R.T. 0.62 min  
 Lab File: VU026954.D  
 Acq: 20 Sep 2018 23:35

Tgt Ion:180 Resp: 49923

Ion	Ratio	Lower	Upper
180	100		
182	94.9	76.7	115.1
184	31.4	24.2	36.4
145	26.8	21.8	32.6

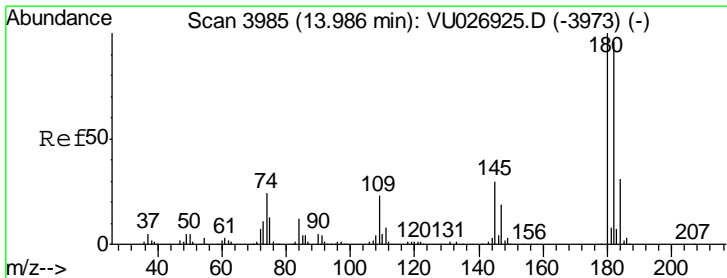
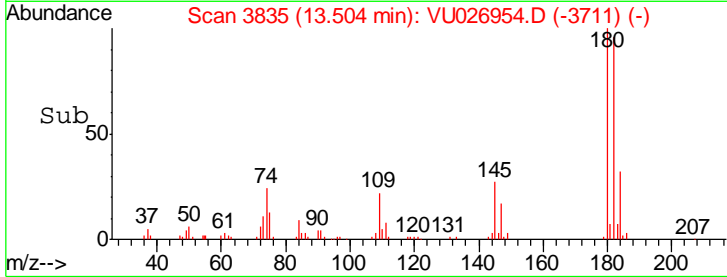
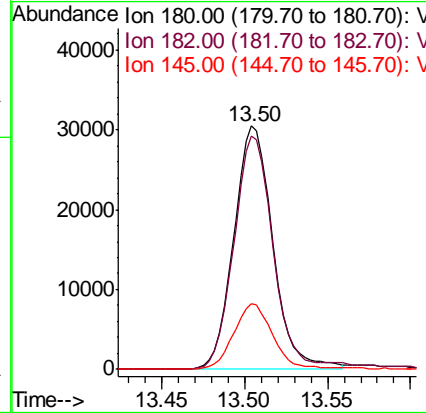
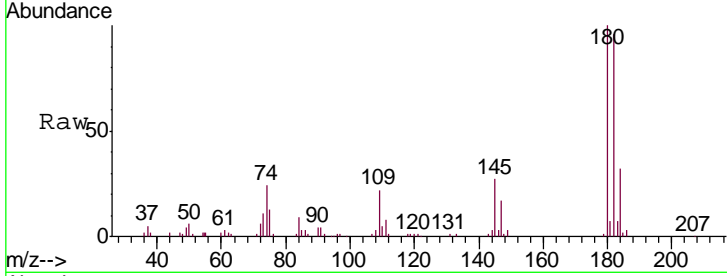




#68  
 1,2,4-trichlorobenzene  
 Concen: 18.685 ug/L  
 RT: 13.50 min Scan# 3835  
 Delta R.T. -0.00 min  
 Lab File: VU026954.D  
 Acq: 20 Sep 2018 23:35

Instrument :  
 MSVOA\_U  
 ClientSampled :  
 C08N4

Tgt Ion	Resp	Lower	Upper
180	49923		
182	94.9	76.8	115.2
145	26.8	22.2	33.2



#70  
 1,2,3-Trichlorobenzene  
 Concen: 4.293 ug/L  
 RT: 13.99 min Scan# 3986  
 Delta R.T. 0.00 min  
 Lab File: VU026954.D  
 Acq: 20 Sep 2018 23:35

Tgt Ion	Resp	Lower	Upper
180	12630		
182	95.0	75.6	113.4
145	27.0	23.8	35.6

