

Data Path : Z:\voasrv\HPCHEM1\MSVOA\_U\Data\VU092121\  
 Data File : VU044744.D  
 Acq On : 21 Sep 2021 18:19  
 Operator : SY/MD  
 Sample : M3777-13  
 Misc : 25.0mL/MSVOA\_U/WATER  
 ALS Vial : 21 Sample Multiplier: 1

Instrument :  
 MSVOA\_U  
 ClientSampled :  
 C0AY6

Quant Time: Sep 22 01:43:47 2021  
 Quant Method : Z:\voasrv\HPCHEM1\MSVOA\_U\Method\SFAMUTR090921WMA.M  
 Quant Title : TRACE VOA SFAM1.0  
 QLast Update : Wed Sep 22 01:40:07 2021  
 Response via : Initial Calibration

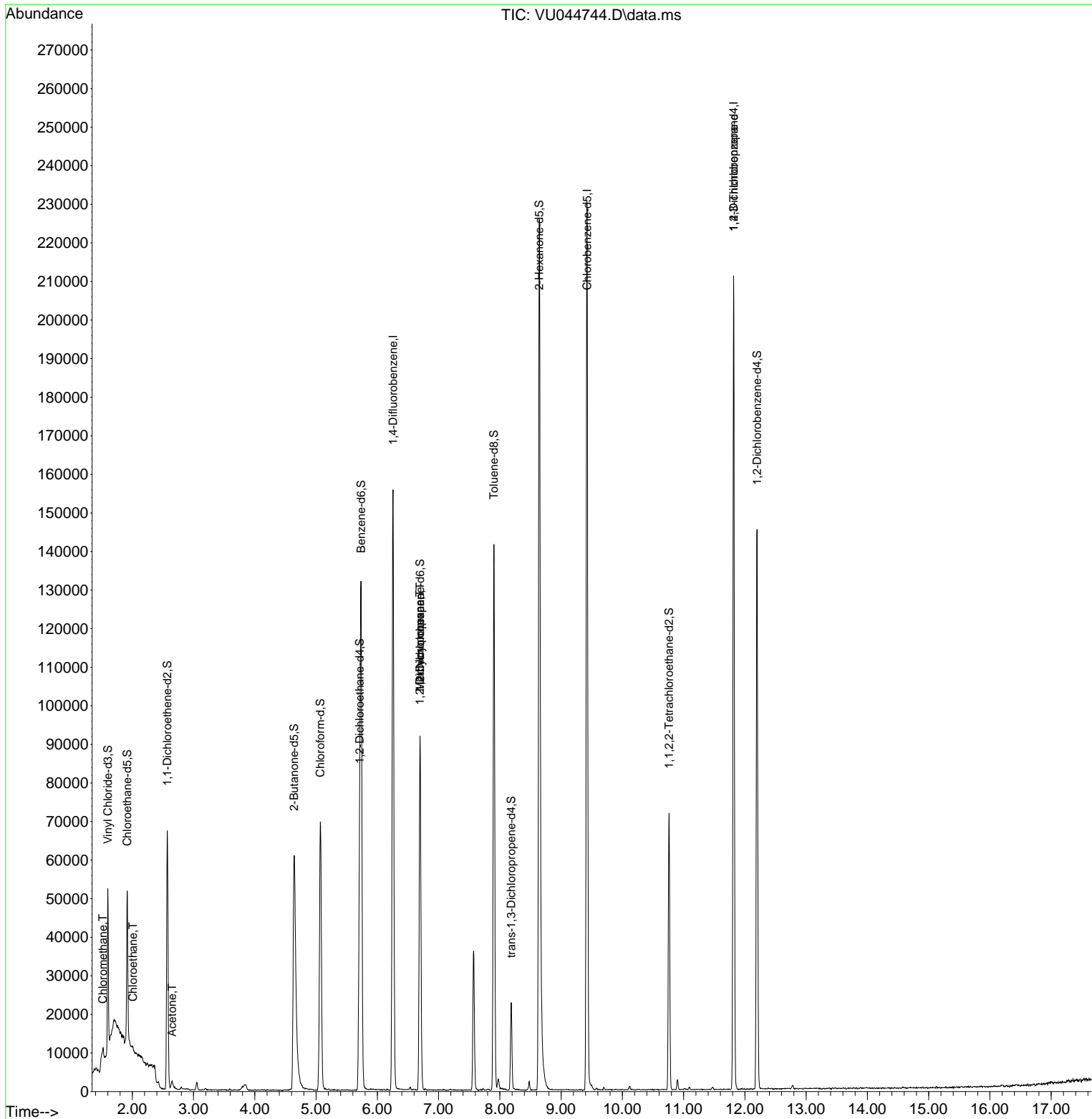
Compound	R.T.	QIon	Response	Conc	Units	Dev(Min)
-----						
Internal Standards						
1) 1,4-Difluorobenzene	6.257	114	116732	5.000	ug/L	0.00
28) Chlorobenzene-d5	9.424	117	119089	5.000	ug/L	0.00
58) 1,4-Dichlorobenzene-d4	11.816	152	49439	5.000	ug/L	0.00
System Monitoring Compounds						
4) Vinyl Chloride-d3	1.601	65	29469	4.279	ug/L	0.00
Spiked Amount	5.000	Range 40 - 130	Recovery	=	85.600%	
7) Chloroethane-d5	1.916	69	27839	3.961	ug/L	0.00
Spiked Amount	5.000	Range 65 - 130	Recovery	=	79.200%	
11) 1,1-Dichloroethene-d2	2.572	65	12716	3.655	ug/L	0.00
Spiked Amount	5.000	Range 60 - 125	Recovery	=	73.200%	
20) 2-Butanone-d5	4.642	46	120379	41.693	ug/L	0.00
Spiked Amount	50.000	Range 40 - 130	Recovery	=	83.380%	
24) Chloroform-d	5.070	84	61859	4.270	ug/L	0.00
Spiked Amount	5.000	Range 70 - 125	Recovery	=	85.400%	
26) 1,2-Dichloroethane-d4	5.710	65	37518	4.343	ug/L	0.00
Spiked Amount	5.000	Range 70 - 130	Recovery	=	86.800%	
32) Benzene-d6	5.736	84	115409	3.801	ug/L	0.00
Spiked Amount	5.000	Range 70 - 125	Recovery	=	76.000%	
36) 1,2-Dichloropropane-d6	6.697	67	41457	4.157	ug/L	0.00
Spiked Amount	5.000	Range 60 - 140	Recovery	=	83.200%	
41) Toluene-d8	7.903	98	90519	3.424	ug/L	0.00
Spiked Amount	5.000	Range 70 - 130	Recovery	=	68.400%#	
43) trans-1,3-Dichloroprop...	8.186	79	12270	3.491	ug/L	0.00
Spiked Amount	5.000	Range 55 - 130	Recovery	=	69.800%	
46) 2-Hexanone-d5	8.642	63	84874	37.567	ug/L	0.00
Spiked Amount	50.000	Range 45 - 130	Recovery	=	75.140%	
56) 1,1,2,2-Tetrachloroeth...	10.761	84	35923	4.063	ug/L	0.00
Spiked Amount	5.000	Range 65 - 120	Recovery	=	81.200%	
66) 1,2-Dichlorobenzene-d4	12.198	152	34530	4.233	ug/L	0.00
Spiked Amount	5.000	Range 80 - 120	Recovery	=	84.600%	
-----						
Target Compounds						Qvalue
3) Chloromethane	1.520	50	1497	0.134	ug/L	88
8) Chloroethane	2.009	64	1064	0.146	ug/L #	52
13) Acetone	2.649	43	3452	1.836	ug/L	88
35) Methylcyclohexane	6.697	83	9633	0.670	ug/L #	15
37) 1,2-Dichloropropane	6.694	63	4598	0.485	ug/L #	88
61) 1,2,3-Trichloropropane	11.816	75	7369	1.349	ug/L #	68
-----						

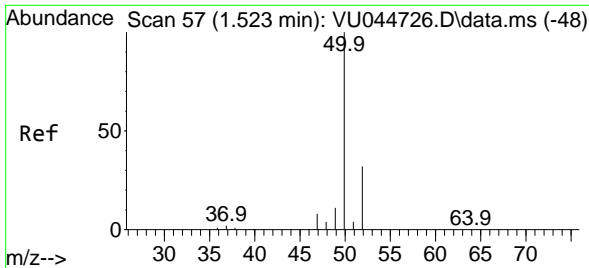
(#) = qualifier out of range (m) = manual integration (+) = signals summed

Data Path : Z:\voasrv\HPCHEM1\MSVOA\_U\Data\VU092121\  
 Data File : VU044744.D  
 Acq On : 21 Sep 2021 18:19  
 Operator : SY/MD  
 Sample : M3777-13  
 Misc : 25.0mL/MSVOA\_U/WATER  
 ALS Vial : 21 Sample Multiplier: 1

Instrument :  
 MSVOA\_U  
 ClientSampled :  
 C0AY6

Quant Time: Sep 22 01:43:47 2021  
 Quant Method : Z:\voasrv\HPCHEM1\MSVOA\_U\Method\SFAMUTR090921WMA.M  
 Quant Title : TRACE VOA SFAM1.0  
 QLast Update : Wed Sep 22 01:40:07 2021  
 Response via : Initial Calibration

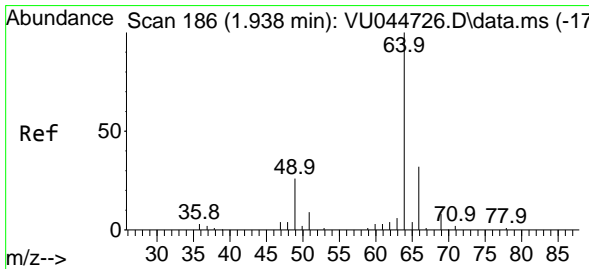
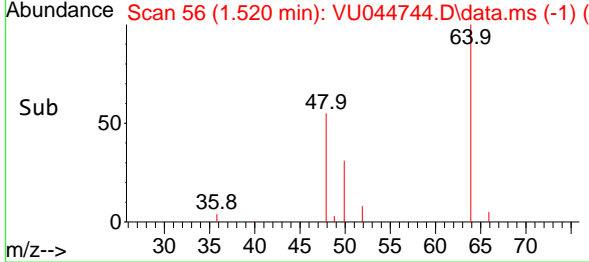
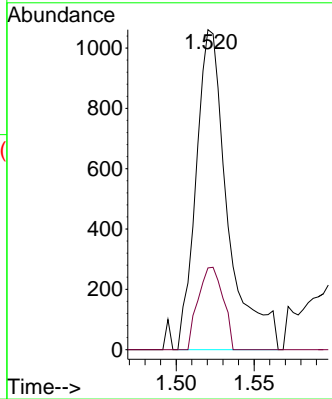
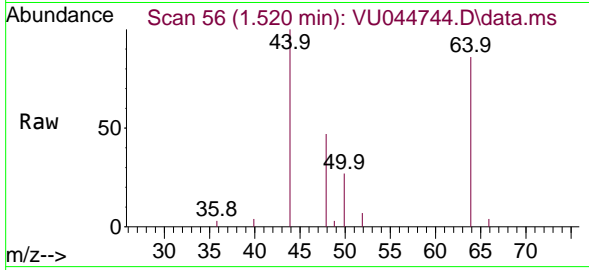




#3  
 Chloromethane  
 Concen: 0.134 ug/L  
 RT: 1.520 min Scan# 56  
 Delta R.T. -0.003 min  
 Lab File: VU044744.D  
 Acq: 21 Sep 2021 18:19

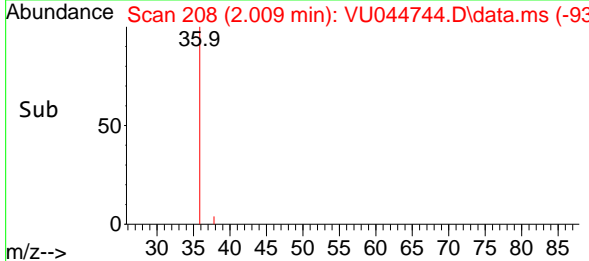
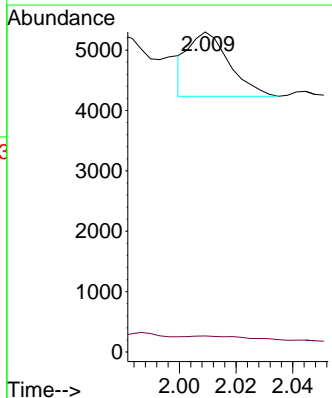
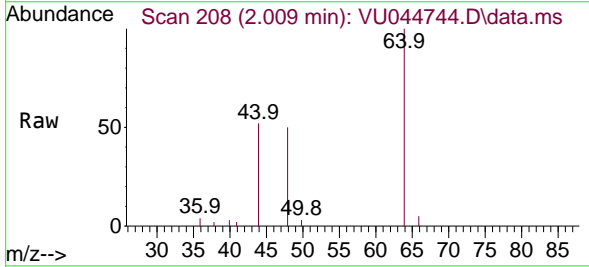
Instrument :  
 MSVOA\_U  
 ClientSampled :  
 C0AY6

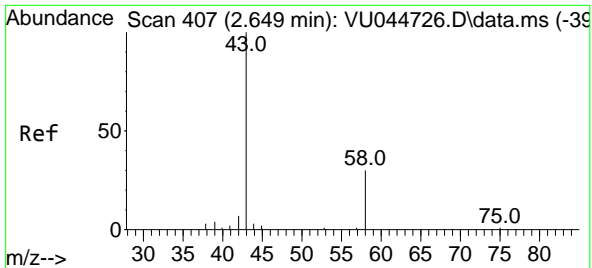
Tgt Ion: 50 Resp: 1497  
 Ion Ratio Lower Upper  
 50 100  
 52 25.5 22.6 42.0



#8  
 Chloroethane  
 Concen: 0.146 ug/L  
 RT: 2.009 min Scan# 208  
 Delta R.T. 0.071 min  
 Lab File: VU044744.D  
 Acq: 21 Sep 2021 18:19

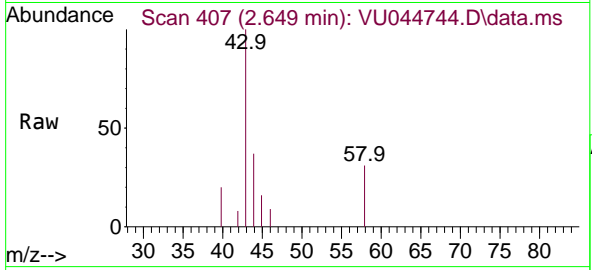
Tgt Ion: 64 Resp: 1064  
 Ion Ratio Lower Upper  
 64 100  
 66 5.0 22.1 41.1#



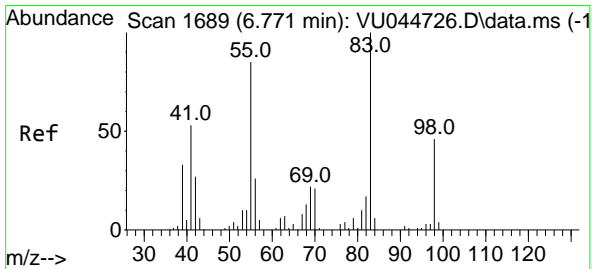
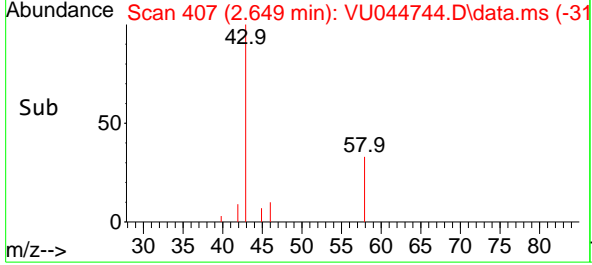
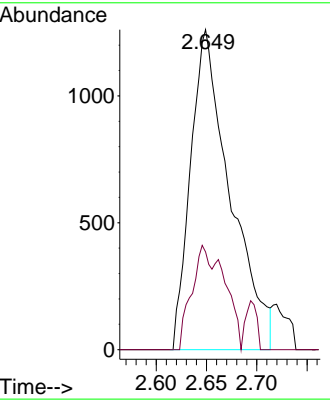


#13  
 Acetone  
 Concen: 1.836 ug/L  
 RT: 2.649 min Scan# 407  
 Delta R.T. 0.000 min  
 Lab File: VU044744.D  
 Acq: 21 Sep 2021 18:19

**Instrument :**  
 MSVOA\_U  
**ClientSampled :**  
 C0AY6

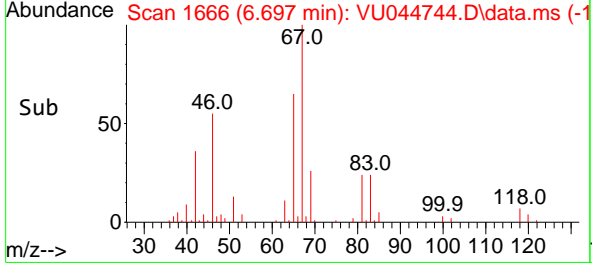
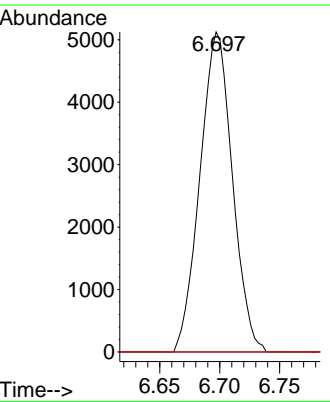
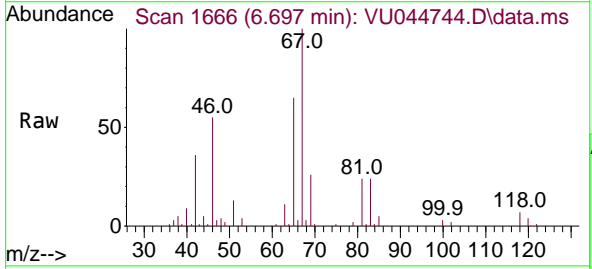


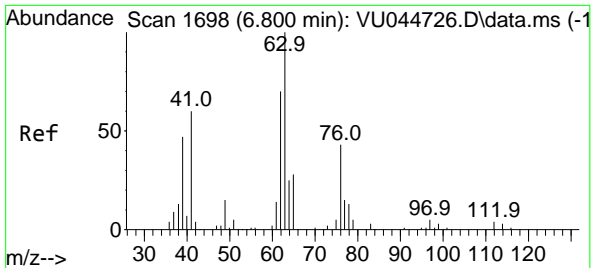
Tgt Ion	Resp	Lower	Upper
43	3452	100	
58	15.8	0.0	42.4



#35  
 Methylcyclohexane  
 Concen: 0.670 ug/L  
 RT: 6.697 min Scan# 1666  
 Delta R.T. -0.074 min  
 Lab File: VU044744.D  
 Acq: 21 Sep 2021 18:19

Tgt Ion	Resp	Lower	Upper
83	9633	100	
55	0.0	68.3	102.5#
98	0.2	37.3	55.9#

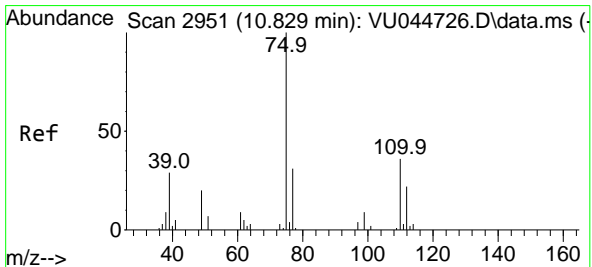
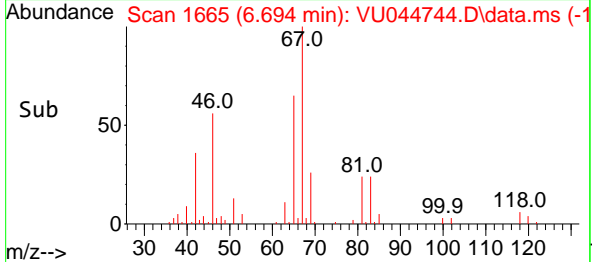
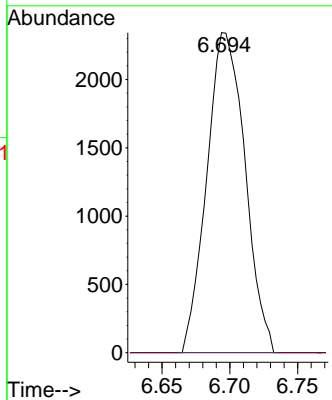
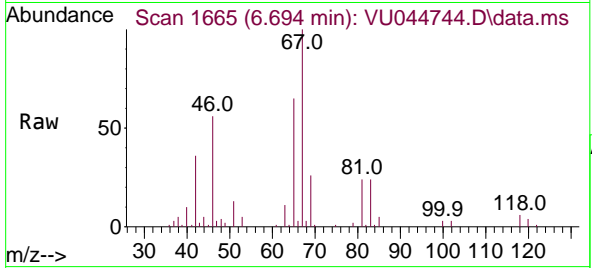




#37  
 1,2-Dichloropropane  
 Concen: 0.485 ug/L  
 RT: 6.694 min Scan# 1665  
 Delta R.T. -0.106 min  
 Lab File: VU044744.D  
 Acq: 21 Sep 2021 18:19

Instrument :  
 MSVOA\_U  
 ClientSampled :  
 C0AY6

Tgt Ion: 63 Resp: 4598  
 Ion Ratio Lower Upper  
 63 100  
 112 0.0 3.1 4.7#



#61  
 1,2,3-Trichloropropane  
 Concen: 1.349 ug/L  
 RT: 11.816 min Scan# 3258  
 Delta R.T. 0.987 min  
 Lab File: VU044744.D  
 Acq: 21 Sep 2021 18:19

Tgt Ion: 75 Resp: 7369  
 Ion Ratio Lower Upper  
 75 100  
 110 0.9 28.8 43.2#  
 77 31.3 25.9 38.9

