

Data Path : Z:\voasrv\HPCHEM1\MSVOA_U\Data\VU092221\
 Data File : VU044767.D
 Acq On : 22 Sep 2021 18:39
 Operator : SY/MD
 Sample : M3814-13
 Misc : 25.0mL/MSVOA_U/WATER
 ALS Vial : 22 Sample Multiplier: 1

Instrument :
 MSVOA_U
 ClientSampleId :
 GB6X3

Integration Parameters: rteint.p
 Integrator: RTE
 Smoothing : ON Filtering: 5
 Sampling : 1 Min Area: 3 % of largest Peak
 Start Thrs: 0.1 Max Peaks: 100
 Stop Thrs : 0 Peak Location: TOP

If leading or trailing edge < 100 prefer < Baseline drop else tangent >
 Peak separation: 5

Method : Z:\voasrv\HPCHEM1\MSVOA_U\Method\SFAMUTR090921WMA.M
 Title : TRACE VOA SFAM1.0

Signal : TIC: VU044767.D\data.ms

peak #	R.T. min	first scan	max scan	last scan	PK TY	peak height	corr. area	corr. % max.	% of total
1	1.600	72	81	90	rBV	44595	51739	9.60%	1.425%
2	1.916	172	179	193	rVB	42329	56327	10.45%	1.551%
3	2.404	324	331	347	rVB8	3485	6981	1.29%	0.192%
4	2.571	372	383	397	rBV	69711	115133	21.36%	3.170%
5	2.652	397	408	413	rVV	3426	6591	1.22%	0.181%
6	4.642	1011	1027	1062	rBV	69678	220413	40.89%	6.069%
7	5.070	1143	1160	1178	rBV	77783	168992	31.35%	4.653%
8	5.732	1345	1366	1393	rBV2	144303	385865	71.58%	10.625%
9	6.256	1515	1529	1554	rBV	164910	314980	58.43%	8.673%
10	6.697	1652	1666	1688	rBV	101099	195353	36.24%	5.379%
11	7.571	1926	1938	1957	rBV	45194	77922	14.45%	2.146%
12	7.902	2024	2041	2055	rBV	159375	272507	50.55%	7.504%
13	7.973	2056	2063	2074	rVB3	4104	7189	1.33%	0.198%
14	8.185	2117	2129	2144	rBV	27827	46578	8.64%	1.283%
15	8.645	2252	2272	2311	rBV	260807	539084	100.00%	14.844%
16	9.420	2501	2513	2544	rBV	241544	407355	75.56%	11.217%
17	10.761	2916	2930	2947	rBV	82272	132105	24.51%	3.638%
18	11.815	3245	3258	3278	rBV	225970	362354	67.22%	9.978%
19	12.198	3365	3377	3392	rBV	162494	264094	48.99%	7.272%

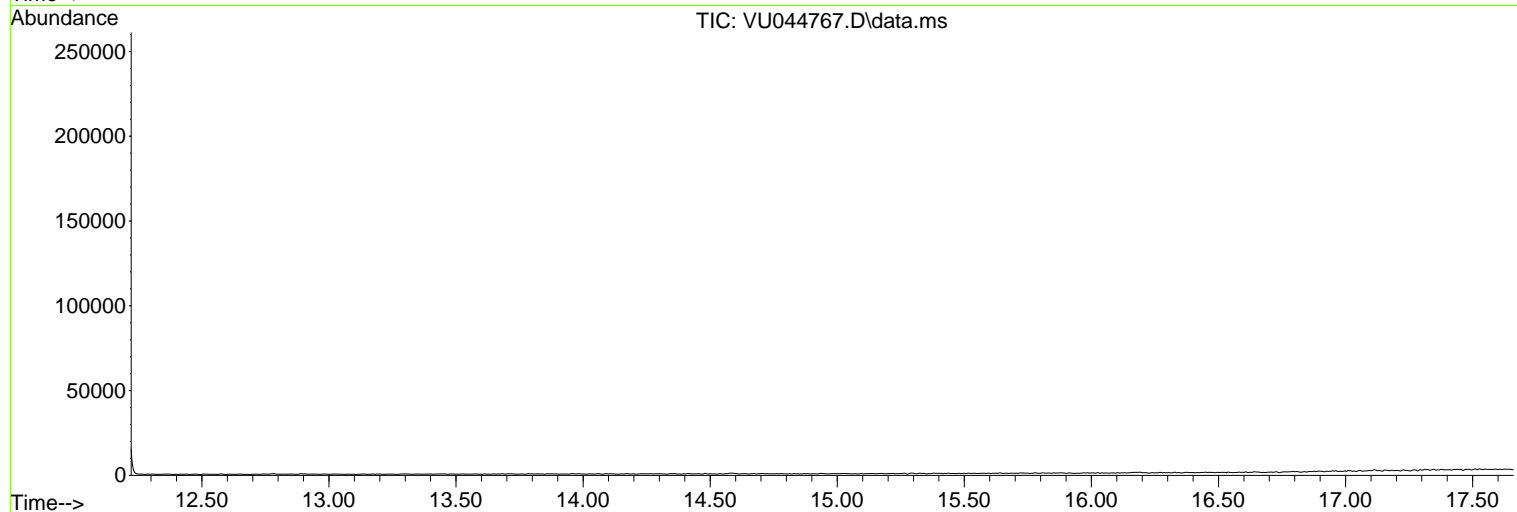
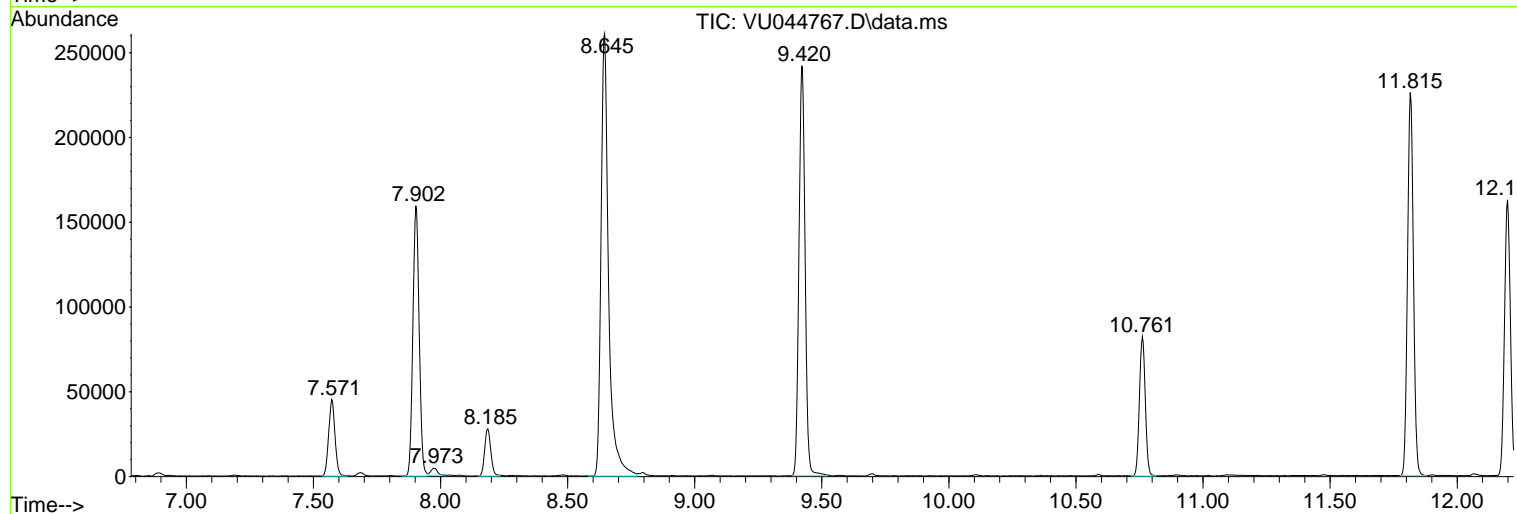
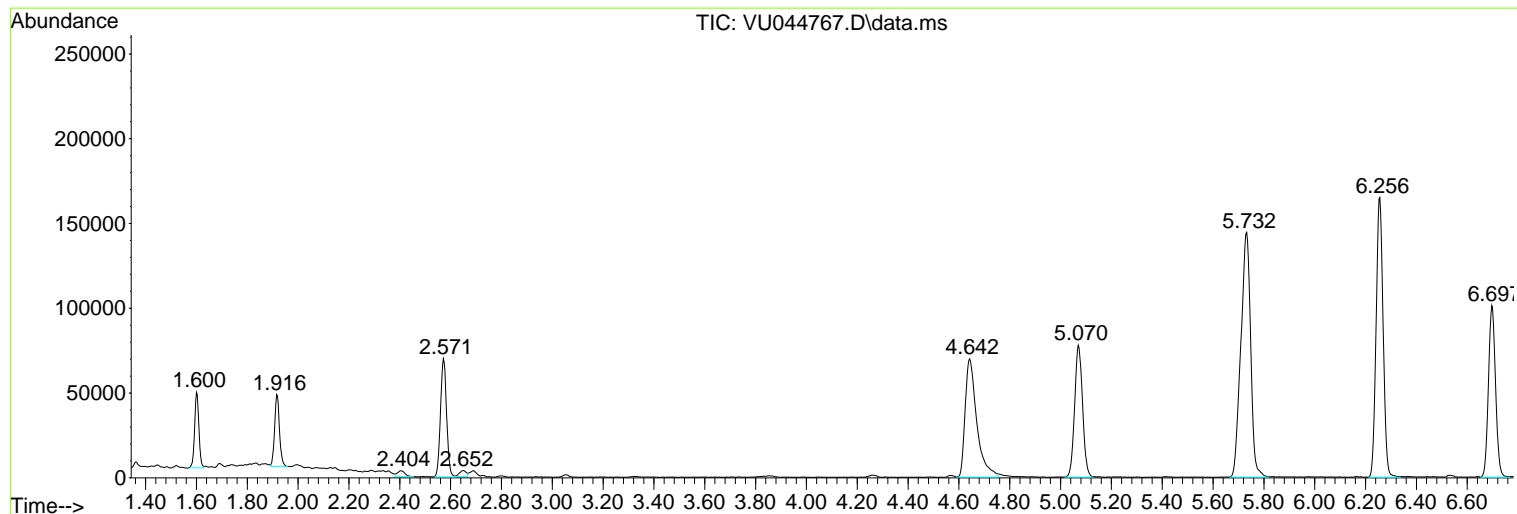
Sum of corrected areas: 3631562

Data Path : Z:\voasrv\HPCHEM1\MSVOA_U\Data\VU092221\
Data File : VU044767.D
Acq On : 22 Sep 2021 18:39
Operator : SY/MD
Sample : M3814-13
Misc : 25.0mL/MSVOA_U/WATER
ALS Vial : 22 Sample Multiplier: 1

Instrument :
MSVOA_U
ClientSampled :
GB6X3

Quant Method : Z:\voasrv\HPCHEM1\MSVOA_U\Method\SFAMUTR090921WMA.M
Quant Title : TRACE VOA SFAM1.0

TIC Library : C:\Database\NIST20.L
TIC Integration Parameters: LSCINT.P



Data Path : Z:\voasrv\HPCHEM1\MSVOA_U\Data\VU092221\
Data File : VU044767.D
Acq On : 22 Sep 2021 18:39
Operator : SY/MD
Sample : M3814-13
Misc : 25.0mL/MSVOA_U/WATER
ALS Vial : 22 Sample Multiplier: 1

Instrument :
MSVOA_U
ClientSampleId :
GB6X3

Quant Method : Z:\voasrv\HPCHEM1\MSVOA_U\Method\SFAMUTR090921WMA.M
Quant Title : TRACE VOA SFAM1.0

TIC Library : C:\Database\NIST0.L
TIC Integration Parameters: LSCINT.P

No Library Search Compounds Detected

Data Path : Z:\voasrv\HPCHEM1\MSVOA_U\Data\VU092221\
Data File : VU044767.D
Acq On : 22 Sep 2021 18:39
Operator : SY/MD
Sample : M3814-13
Misc : 25.0mL/MSVOA_U/WATER
ALS Vial : 22 Sample Multiplier: 1

Instrument :
MSVOA_U
ClientSampled :
GB6X3

Quant Method : Z:\voasrv\HPCHEM1\MSVOA_U\Method\SFAMUTR090921WMA.M
Quant Title : TRACE VOA SFAM1.0

TIC Library : C:\Database\NIST20.L
TIC Integration Parameters: LSCINT.P

TIC Top Hit name	RT	EstConc	Units	Response	--Internal Standard--		
					#	RT	Resp Conc
