

Data Path : Z:\VOASRV\HPCHEM1\MSVOA U\DATA\VU092318\
 Data File : VU027054.D
 Acq On : 23 Sep 2018 06:53
 Operator : MD/SY
 Sample : J4963-08
 Misc : 5.0mL/MSVOA U/WATER
 ALS Vial : 96 Sample Multiplier: 1

Instrument :
 MSVOA_U
 ClientSampleId :
 SA-PZ163I-20180914

Quant Time: Sep 24 06:47:06 2018
 Quant Method : Z:\VOASRV\HPCHEM1\MSVOA_U\METHOD\82U092218W.M
 Quant Title : SW846 8260
 QLast Update : Sat Sep 22 01:31:57 2018
 Response via : Initial Calibration

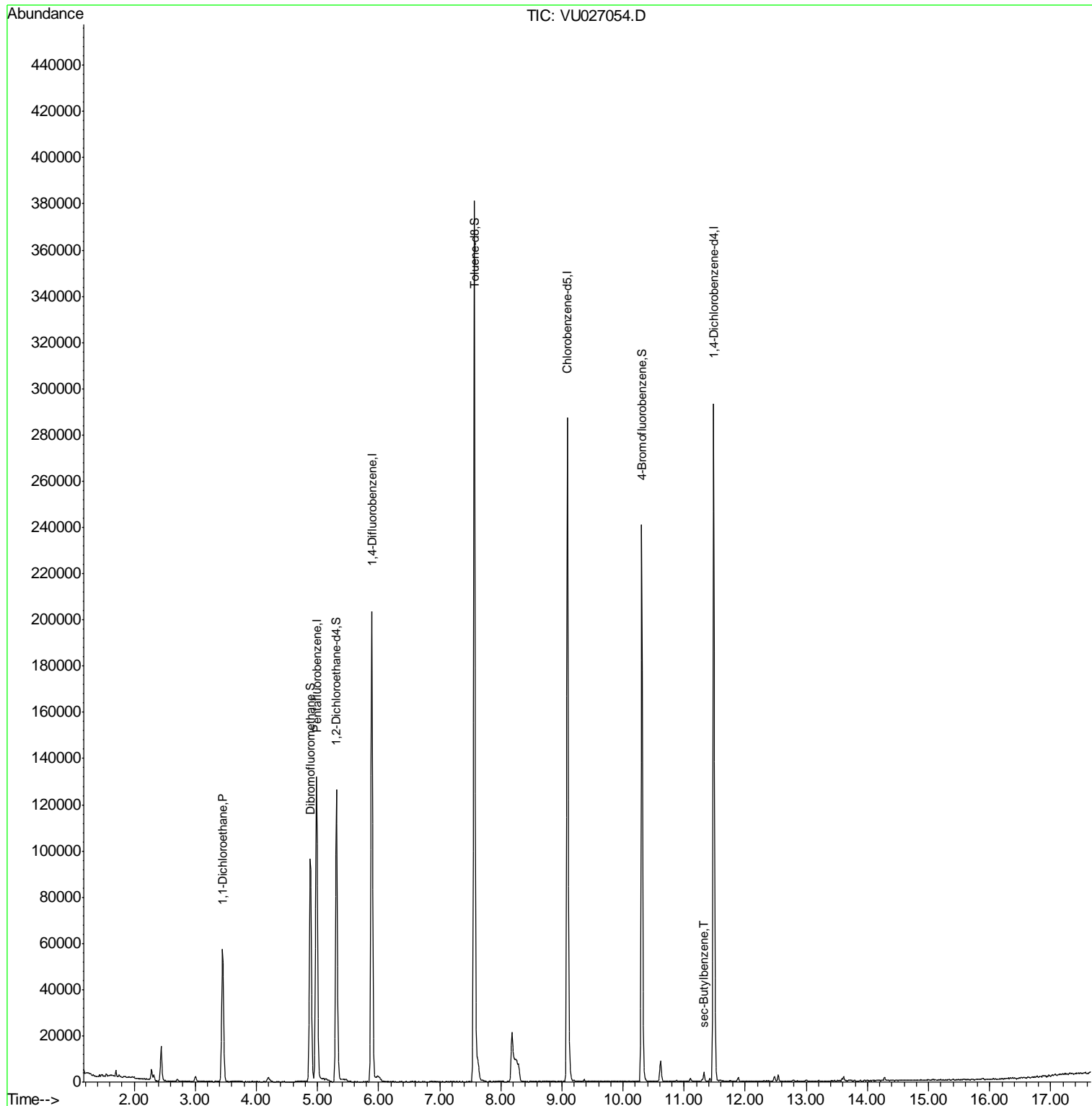
Internal Standards	R.T.	QIon	Response	Conc	Units	Dev(Min)
1) Pentafluorobenzene	4.99	168	91117	50.00	ug/l	0.00
34) 1,4-Difluorobenzene	5.89	114	156796	50.00	ug/l	0.00
63) Chlorobenzene-d5	9.09	117	148264	50.00	ug/l	0.00
72) 1,4-Dichlorobenzene-d4	11.48	152	68818	50.00	ug/l	0.00
System Monitoring Compounds						
33) 1,2-Dichloroethane-d4	5.31	65	95572	52.11	ug/l	0.00
Spiked Amount	50.000		Recovery	=	104.22%	
35) Dibromofluoromethane	4.88	113	66289	48.77	ug/l	0.00
Spiked Amount	50.000		Recovery	=	97.54%	
50) Toluene-d8	7.57	98	249873	48.24	ug/l	0.00
Spiked Amount	50.000		Recovery	=	96.48%	
62) 4-Bromofluorobenzene	10.31	95	79779	44.89	ug/l	0.00
Spiked Amount	50.000		Recovery	=	89.78%	
Target Compounds						
24) 1,1-Dichloroethane	3.45	63	63398	21.084	ug/l	99
85) sec-Butylbenzene	11.32	105	2980	0.571	ug/l	97

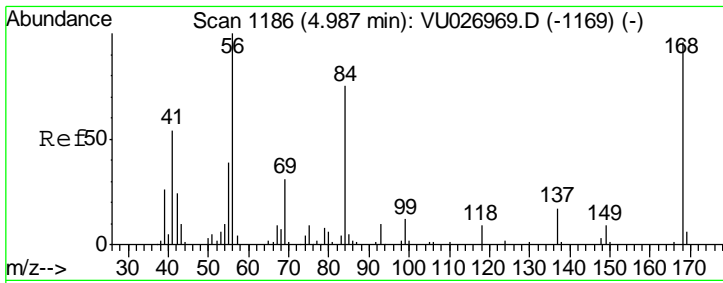
(#) = qualifier out of range (m) = manual integration (+) = signals summed

Data Path : Z:\VOASRV\HPCHEM1\MSVOA U\DATA\VU092318\
Data File : VU027054.D
Acq On : 23 Sep 2018 06:53
Operator : MD/SY
Sample : J4963-08
Misc : 5.0mL/MSVOA U/WATER
ALS Vial : 96 Sample Multiplier: 1

Instrument :
MSVOA_U
ClientSampleId :
SA-PZ163I-20180914

Quant Time: Sep 24 06:47:06 2018
Quant Method : Z:\VOASRV\HPCHEM1\MSVOA_U\METHOD\82U092218W.M
Quant Title : SW846 8260
QLast Update : Sat Sep 22 01:31:57 2018
Response via : Initial Calibration

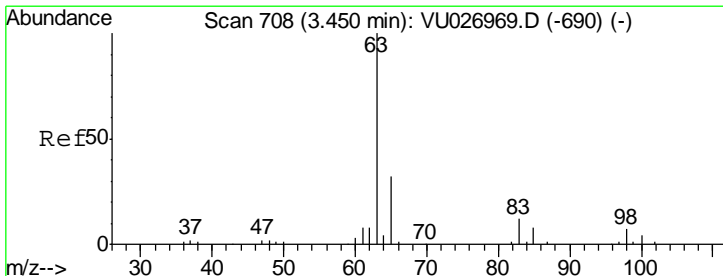
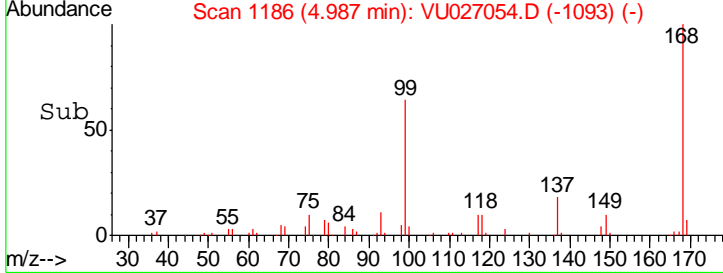
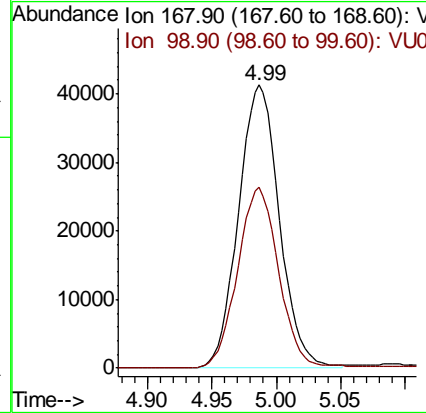
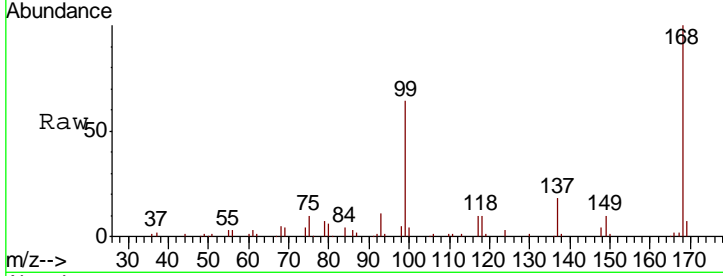




#1
 Pentafluorobenzene
 Concen: 50.000 ug/l
 RT: 4.99 min Scan# 1186
 Delta R.T. -0.00 min
 Lab File: VU027054.D
 Acq: 23 Sep 2018 06:53

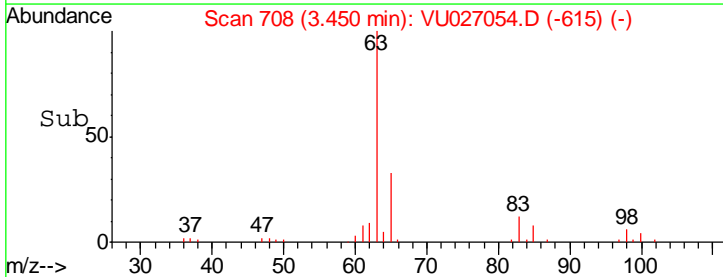
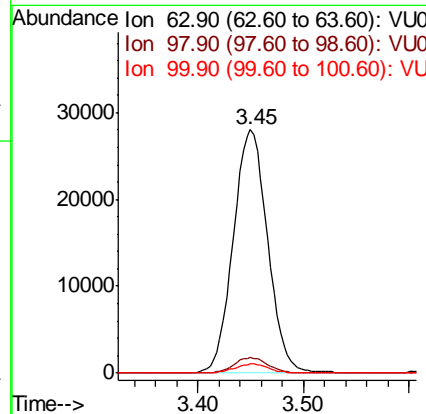
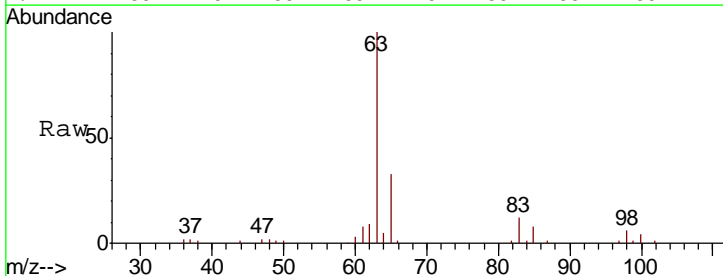
Instrument : MSVOA_U
 ClientSampleId : SA-PZ1631-20180914

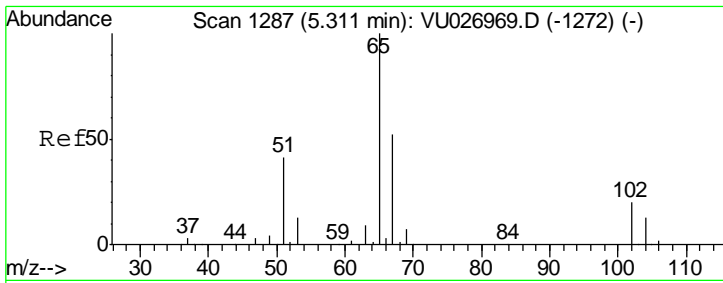
Tgt Ion: 168 Resp: 91117
 Ion Ratio Lower Upper
 168 100
 99 63.8 48.1 72.1



#24
 1,1-Dichloroethane
 Concen: 21.084 ug/l
 RT: 3.45 min Scan# 708
 Delta R.T. -0.00 min
 Lab File: VU027054.D
 Acq: 23 Sep 2018 06:53

Tgt Ion: 63 Resp: 63398
 Ion Ratio Lower Upper
 63 100
 98 6.2 3.3 9.8
 100 3.7 2.0 5.8

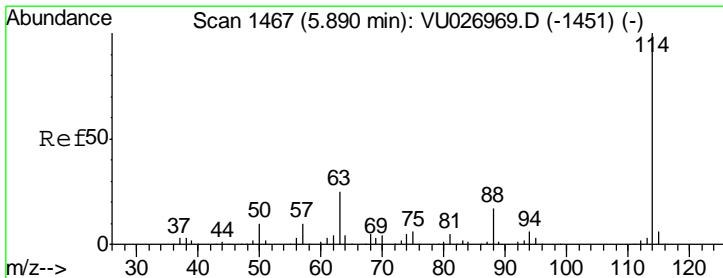
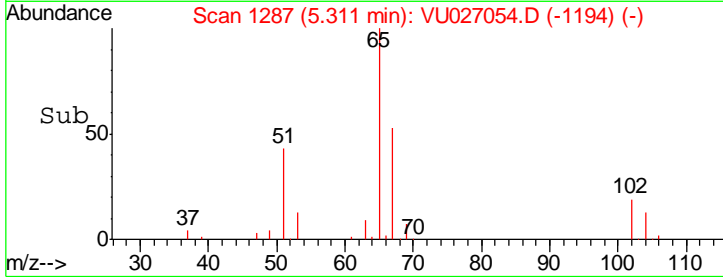
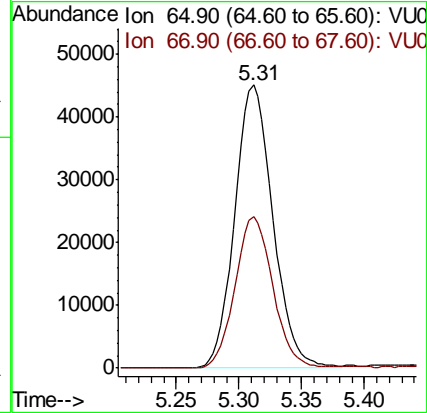
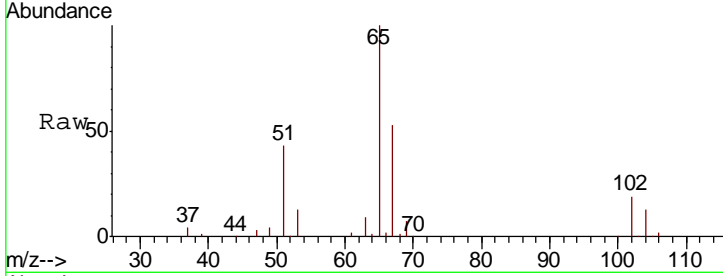




#33
 1,2-Dichloroethane-d4
 Concen: 52.115 ug/l
 RT: 5.31 min Scan# 1287
 Delta R.T. -0.00 min
 Lab File: VU027054.D
 Acq: 23 Sep 2018 06:53

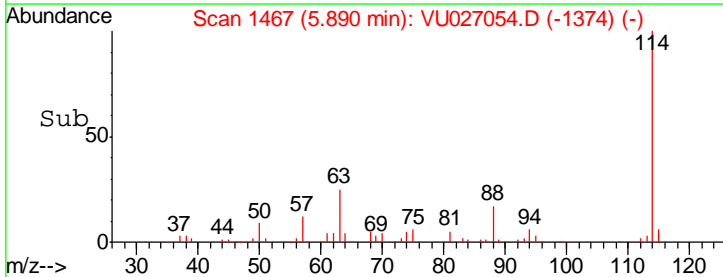
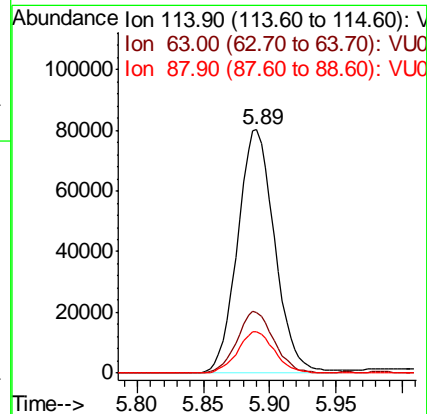
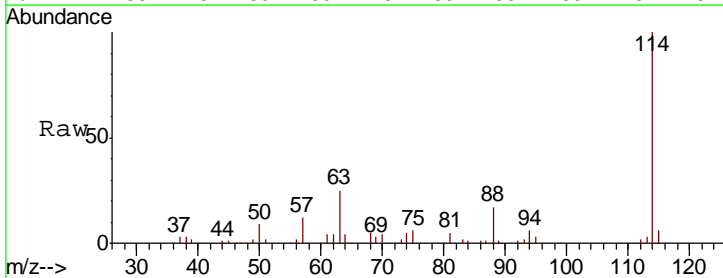
Instrument :
 MSVOA_U
 ClientSampled :
 SA-PZ1631-20180914

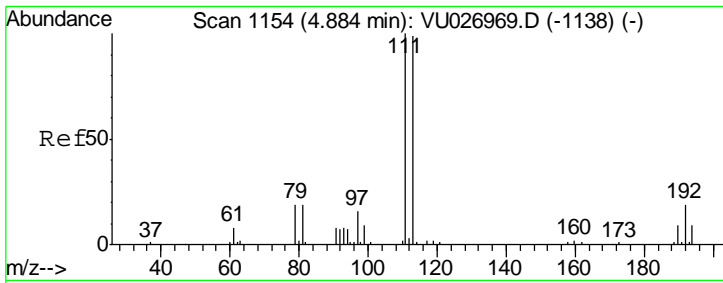
Tgt Ion: 65 Resp: 95572
 Ion Ratio Lower Upper
 65 100
 67 53.0 0.0 105.6



#34
 1,4-Difluorobenzene
 Concen: 50.000 ug/l
 RT: 5.89 min Scan# 1467
 Delta R.T. -0.00 min
 Lab File: VU027054.D
 Acq: 23 Sep 2018 06:53

Tgt Ion: 114 Resp: 156796
 Ion Ratio Lower Upper
 114 100
 63 25.0 0.0 49.2
 88 17.1 0.0 33.8

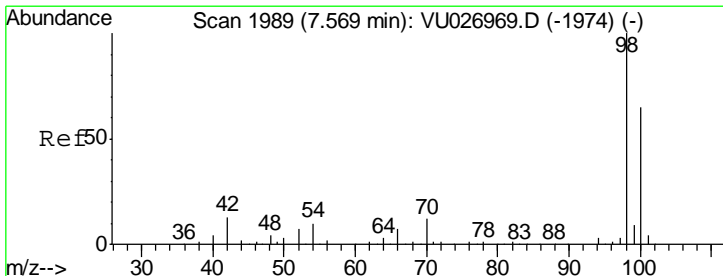
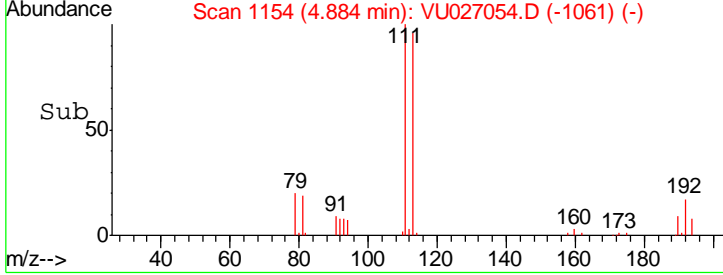
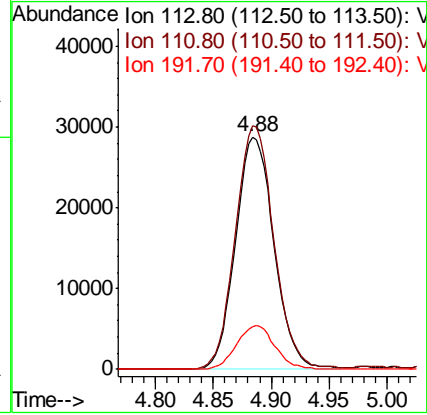
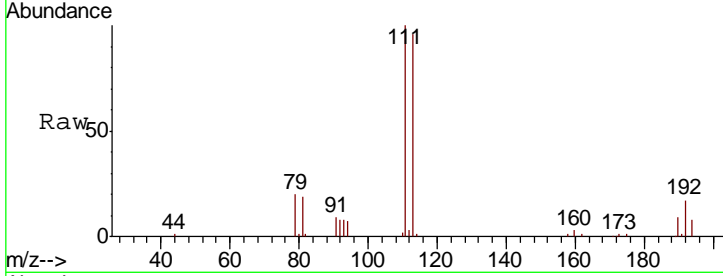




#35
 Dibromofluoromethane
 Concen: 48.774 ug/l
 RT: 4.88 min Scan# 1154
 Delta R.T. 0.00 min
 Lab File: VU027054.D
 Acq: 23 Sep 2018 06:53

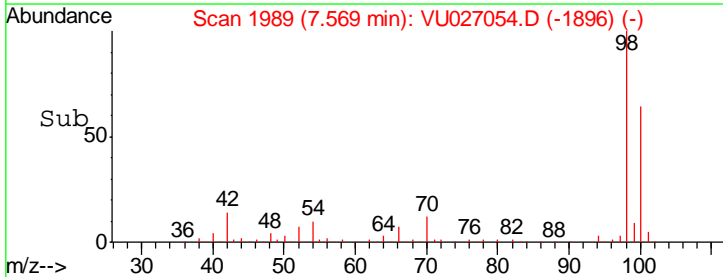
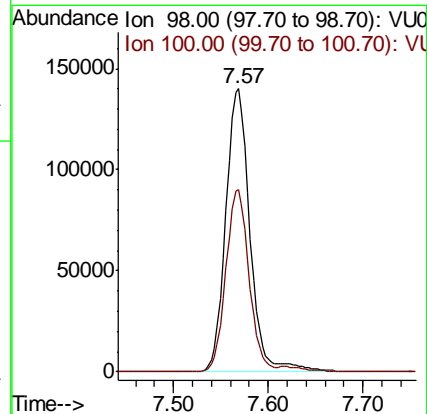
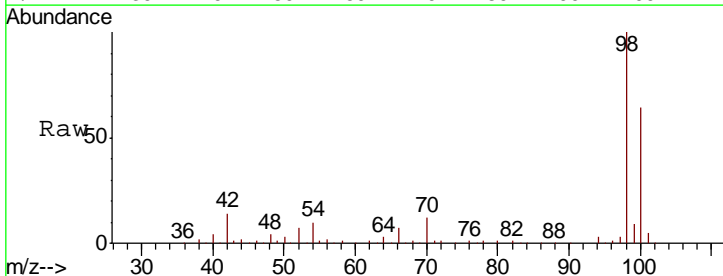
Instrument :
 MSVOA_U
 ClientSampleId :
 SA-PZ1631-20180914

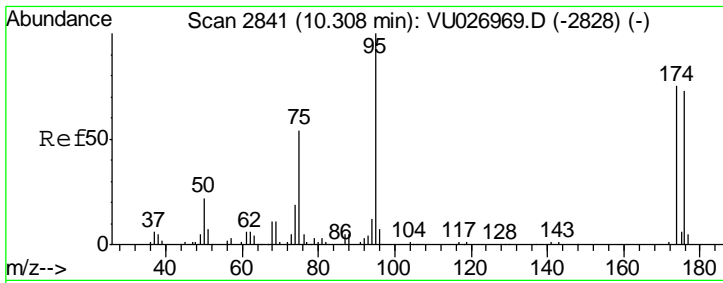
Tgt Ion	Resp	Lower	Upper
113	100		
111	105.0	82.2	123.4
192	18.7	15.2	22.8



#50
 Toluene-d8
 Concen: 48.242 ug/l
 RT: 7.57 min Scan# 1989
 Delta R.T. -0.00 min
 Lab File: VU027054.D
 Acq: 23 Sep 2018 06:53

Tgt Ion	Resp	Lower	Upper
98	100		
100	61.5	52.1	78.1

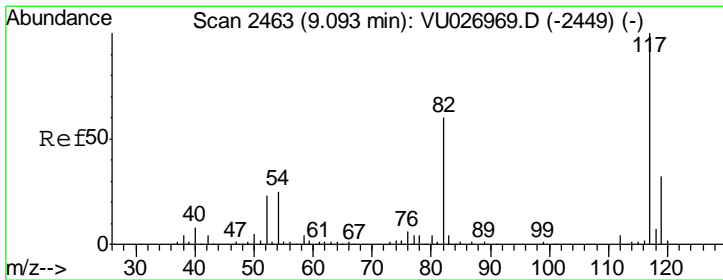
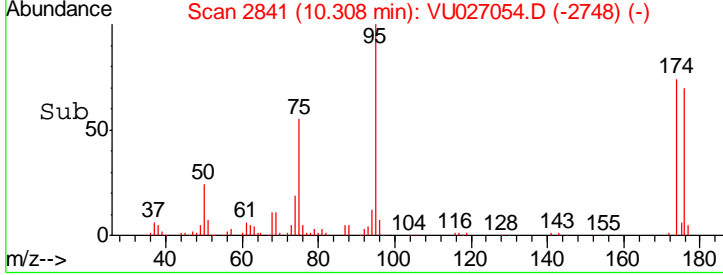
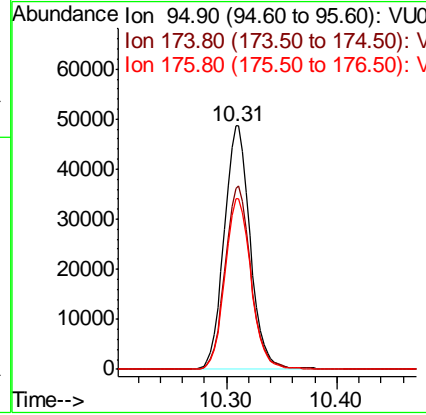
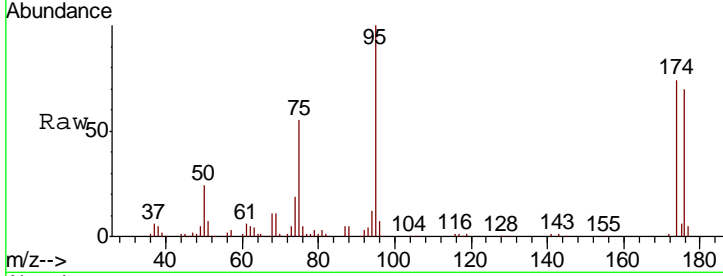




#62
 4-Bromofluorobenzene
 Concen: 44.888 ug/l
 RT: 10.31 min Scan# 2841
 Delta R.T. -0.00 min
 Lab File: VU027054.D
 Acq: 23 Sep 2018 06:53

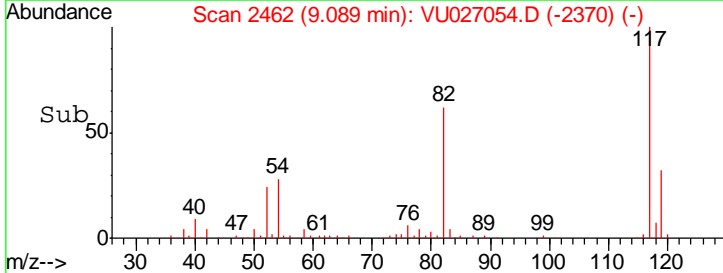
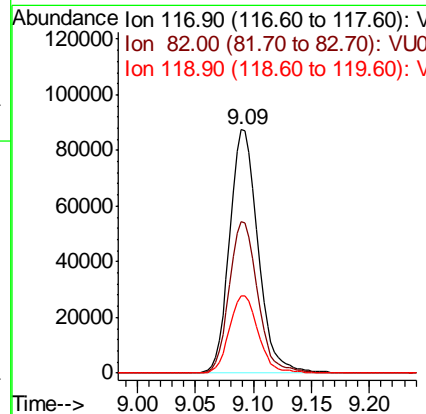
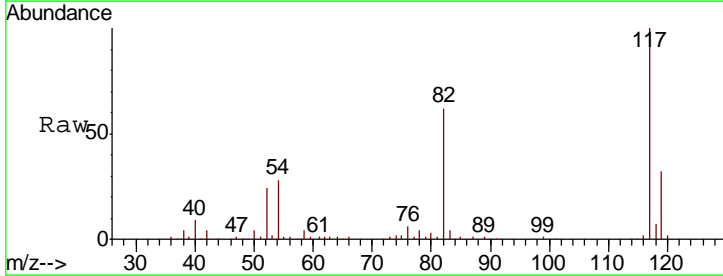
Instrument : MSVOA_U
 ClientSampleId : SA-PZ1631-20180914

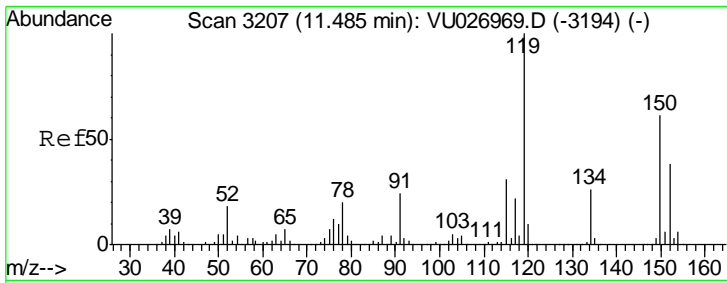
Tgt Ion	Resp	Lower	Upper
95	79779		
174	74.9	0.0	150.2
176	70.2	0.0	145.2



#63
 Chlorobenzene-d5
 Concen: 50.000 ug/l
 RT: 9.09 min Scan# 2462
 Delta R.T. -0.00 min
 Lab File: VU027054.D
 Acq: 23 Sep 2018 06:53

Tgt Ion	Resp	Lower	Upper
117	148264		
82	62.3	48.0	72.0
119	31.9	25.8	38.8

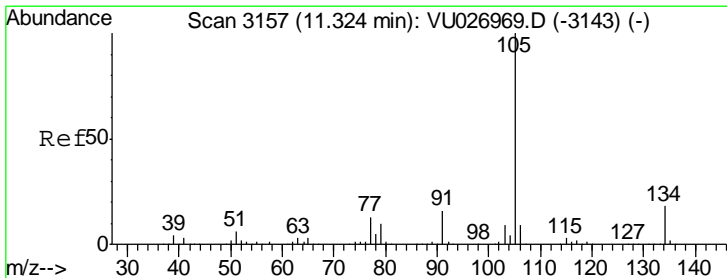
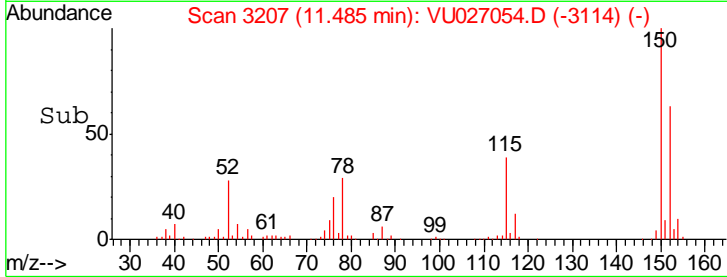
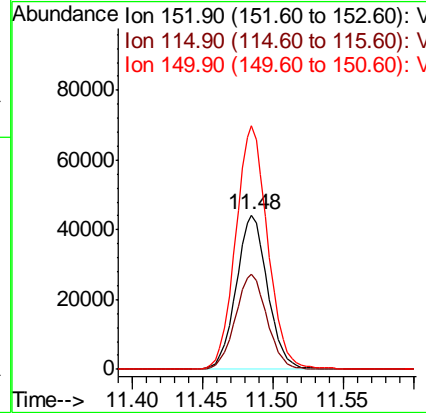
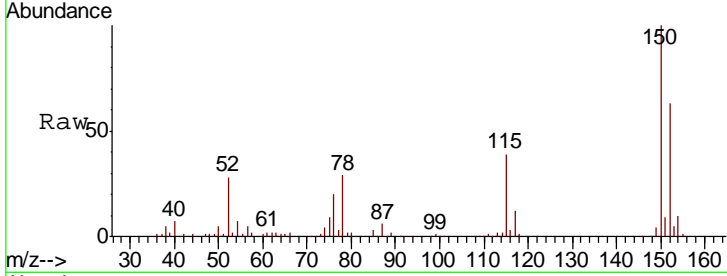




#72
 1,4-Dichlorobenzene-d4
 Concen: 50.000 ug/l
 RT: 11.48 min Scan# 3207
 Delta R.T. -0.00 min
 Lab File: VU027054.D
 Acq: 23 Sep 2018 06:53

Instrument :
 MSVOA_U
 ClientSampled :
 SA-PZ163I-20180914

Tgt Ion	Resp	Lower	Upper
152	100		
115	62.0	44.9	134.5
150	161.5	0.0	355.8



#85
 sec-Butylbenzene
 Concen: 0.571 ug/l
 RT: 11.32 min Scan# 3157
 Delta R.T. -0.00 min
 Lab File: VU027054.D
 Acq: 23 Sep 2018 06:53

Tgt Ion	Resp	Lower	Upper
105	100		
134	17.3	9.4	28.2

