

Data Path : Z:\VOASRV\HPCHEM1\MSVOA U\DATA\VU092318\  
 Data File : VU027073.D  
 Acq On : 23 Sep 2018 15:42  
 Operator : MD/SY  
 Sample : J4954-13  
 Misc : 5.0mL/MSVOA U/WATER  
 ALS Vial : 115 Sample Multiplier: 1

Instrument :  
 MSVOA\_U  
 ClientSampleId :  
 SA-PZ118S-20180914

Quant Time: Sep 24 08:39:05 2018  
 Quant Method : Z:\VOASRV\HPCHEM1\MSVOA\_U\METHOD\82U092218W.M  
 Quant Title : SW846 8260  
 QLast Update : Sat Sep 22 01:31:57 2018  
 Response via : Initial Calibration

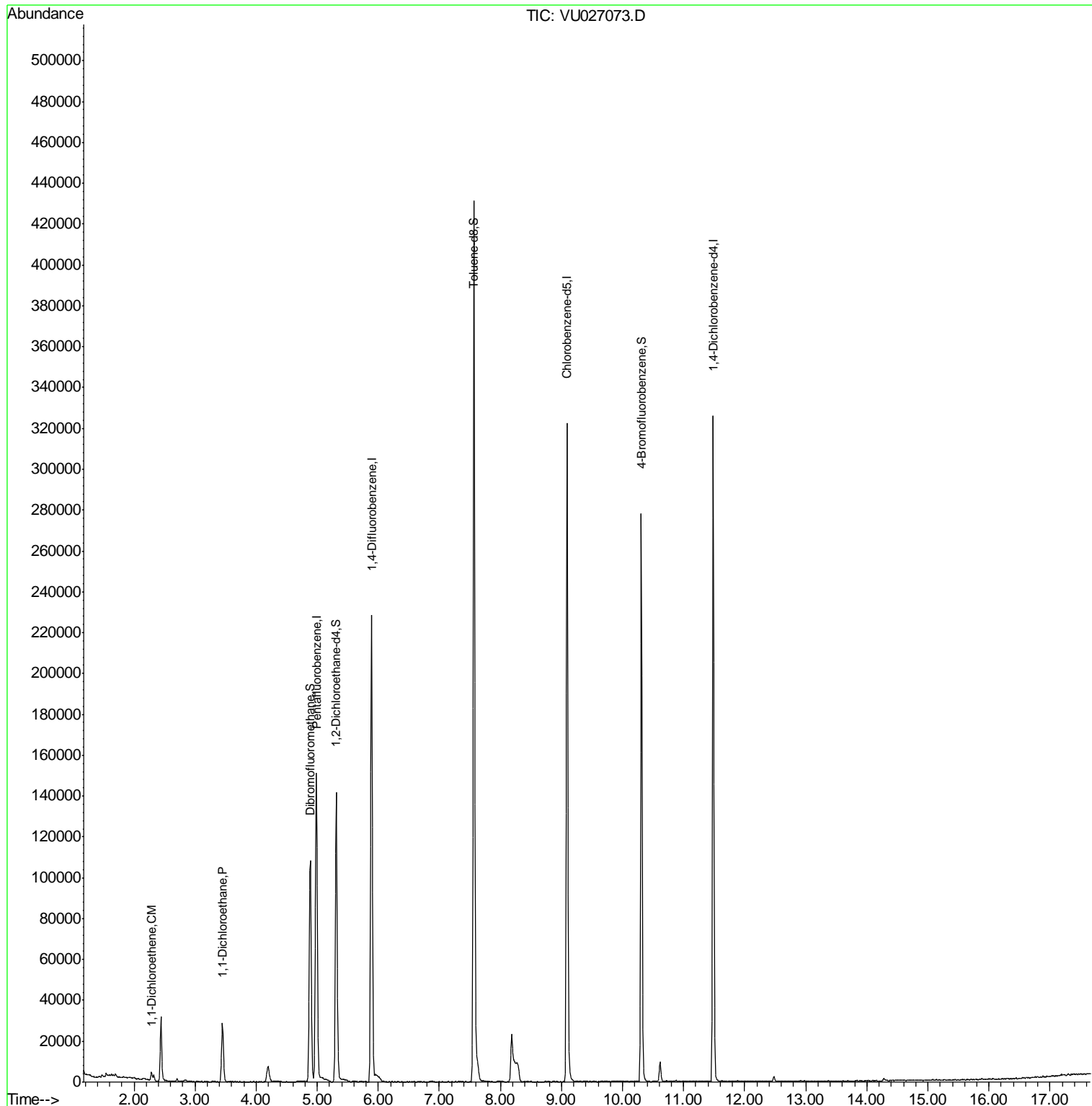
Internal Standards	R.T.	QIon	Response	Conc	Units	Dev(Min)
1) Pentafluorobenzene	4.99	168	105721	50.00	ug/l	0.00
34) 1,4-Difluorobenzene	5.89	114	174528	50.00	ug/l	0.00
63) Chlorobenzene-d5	9.09	117	168320	50.00	ug/l	0.00
72) 1,4-Dichlorobenzene-d4	11.48	152	76936	50.00	ug/l	0.00
System Monitoring Compounds						
33) 1,2-Dichloroethane-d4	5.31	65	108515	51.00	ug/l	0.00
Spiked Amount	50.000		Recovery	=	102.00%	
35) Dibromofluoromethane	4.89	113	75021	49.59	ug/l	0.00
Spiked Amount	50.000		Recovery	=	99.18%	
50) Toluene-d8	7.57	98	283070	49.10	ug/l	0.00
Spiked Amount	50.000		Recovery	=	98.20%	
62) 4-Bromofluorobenzene	10.31	95	91845	46.43	ug/l	0.00
Spiked Amount	50.000		Recovery	=	92.86%	
Target Compounds						
12) 1,1-Dichloroethene	2.29	96	1350	0.925	ug/l	96
24) 1,1-Dichloroethane	3.45	63	32401	9.287	ug/l	98

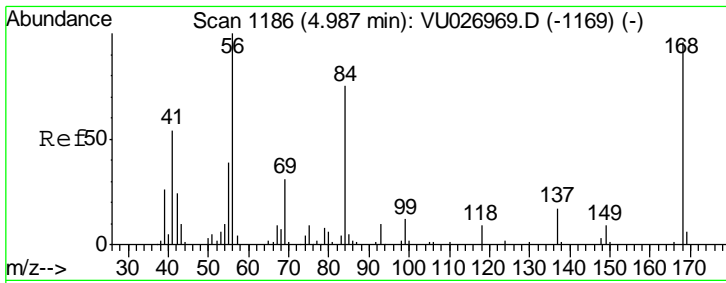
(#) = qualifier out of range (m) = manual integration (+) = signals summed

Data Path : Z:\VOASRV\HPCHEM1\MSVOA U\DATA\VU092318\  
 Data File : VU027073.D  
 Acq On : 23 Sep 2018 15:42  
 Operator : MD/SY  
 Sample : J4954-13  
 Misc : 5.0mL/MSVOA U/WATER  
 ALS Vial : 115 Sample Multiplier: 1

**Instrument :**  
 MSVOA\_U  
**ClientSampleId :**  
 SA-PZ118S-20180914

Quant Time: Sep 24 08:39:05 2018  
 Quant Method : Z:\VOASRV\HPCHEM1\MSVOA\_U\METHOD\82U092218W.M  
 Quant Title : SW846 8260  
 QLast Update : Sat Sep 22 01:31:57 2018  
 Response via : Initial Calibration

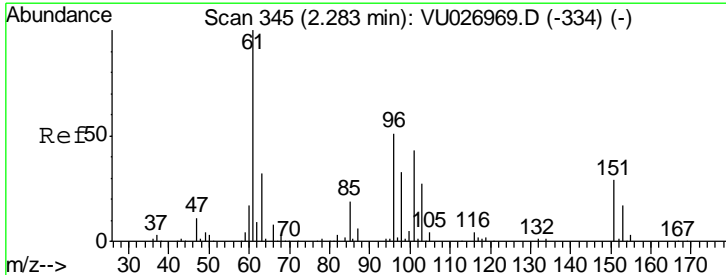
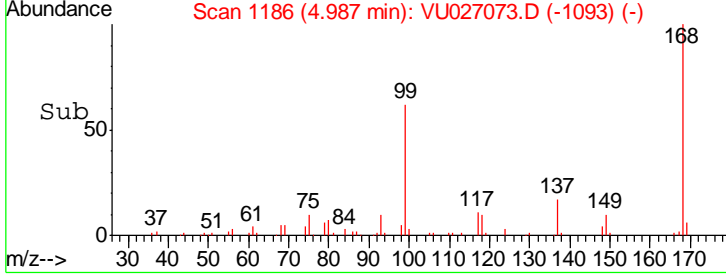
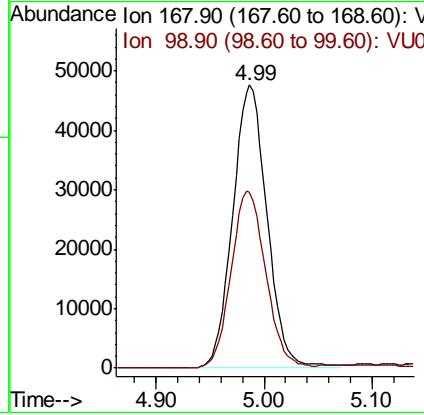
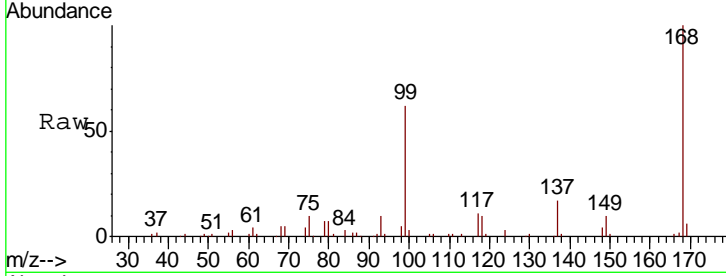




#1  
 Pentafluorobenzene  
 Concen: 50.000 ug/l  
 RT: 4.99 min Scan# 1186  
 Delta R.T. 0.00 min  
 Lab File: VU027073.D  
 Acq: 23 Sep 2018 15:42

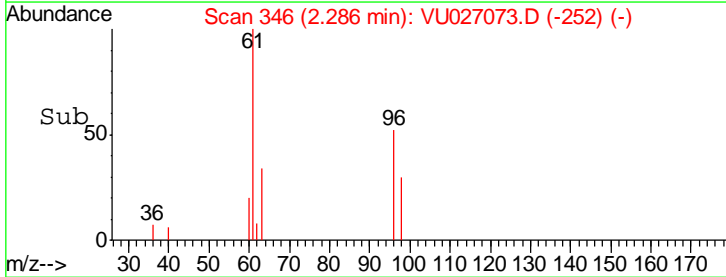
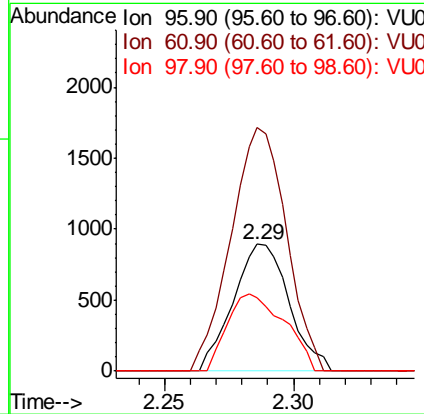
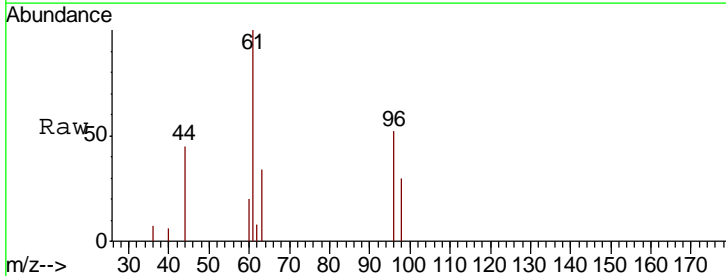
**Instrument :**  
 MSVOA\_U  
**ClientSampled :**  
 SA-PZ118S-20180914

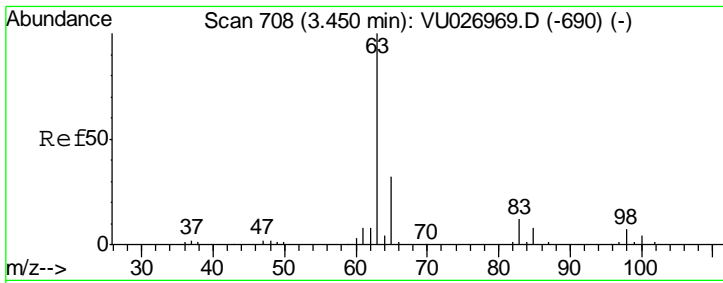
Tgt Ion	Resp	Lower	Upper
168	105721		
99	62.1	48.1	72.1



#12  
 1,1-Dichloroethene  
 Concen: 0.925 ug/l  
 RT: 2.29 min Scan# 346  
 Delta R.T. 0.00 min  
 Lab File: VU027073.D  
 Acq: 23 Sep 2018 15:42

Tgt Ion	Resp	Lower	Upper
96	1350		
61	192.3	156.1	234.1
98	57.5	51.4	77.0

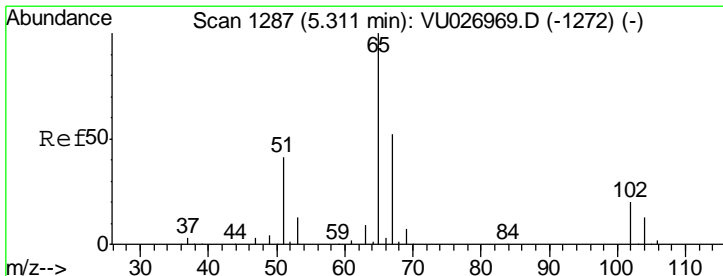
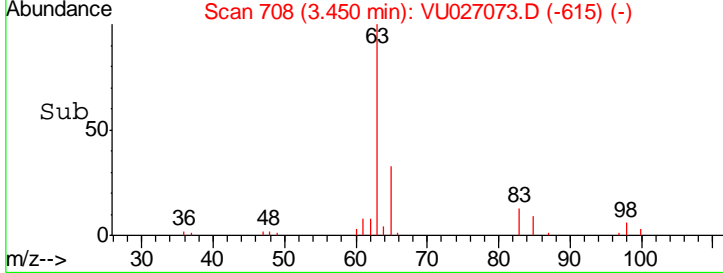
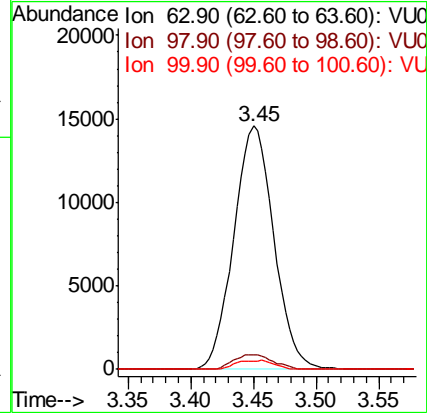
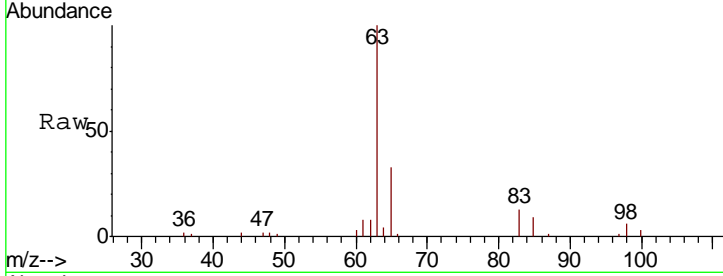




#24  
 1,1-Dichloroethane  
 Concen: 9.287 ug/l  
 RT: 3.45 min Scan# 708  
 Delta R.T. 0.00 min  
 Lab File: VU027073.D  
 Acq: 23 Sep 2018 15:42

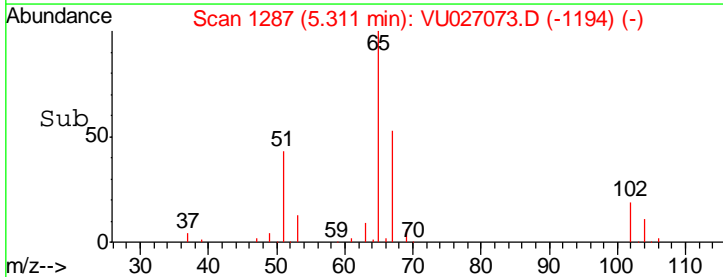
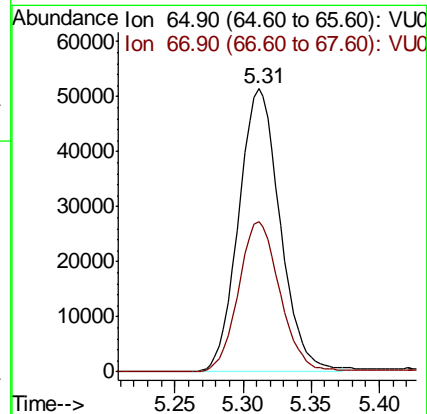
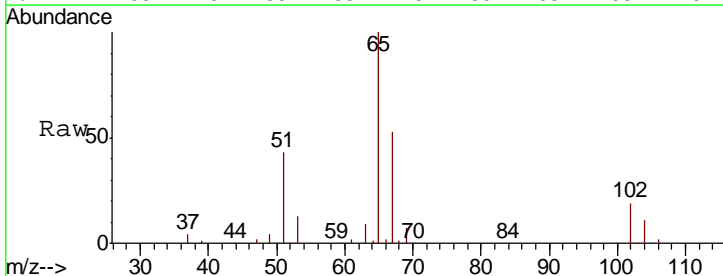
Instrument :  
 MSVOA\_U  
 ClientSampled :  
 SA-PZ118S-20180914

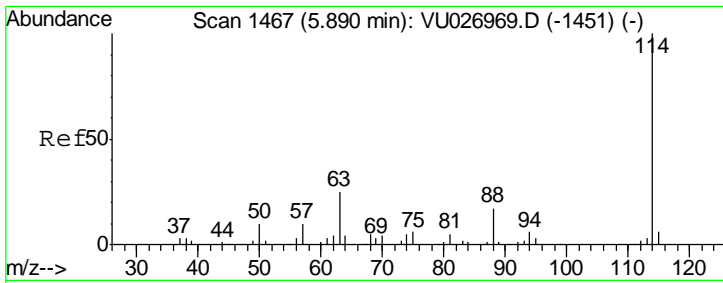
Tgt Ion	Resp	Lower	Upper
63	100		
98	6.1	3.3	9.8
100	3.2	2.0	5.8



#33  
 1,2-Dichloroethane-d4  
 Concen: 50.998 ug/l  
 RT: 5.31 min Scan# 1287  
 Delta R.T. 0.00 min  
 Lab File: VU027073.D  
 Acq: 23 Sep 2018 15:42

Tgt Ion	Resp	Lower	Upper
65	100		
67	53.3	0.0	105.6

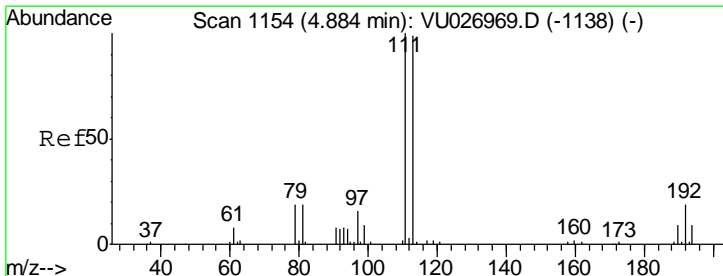
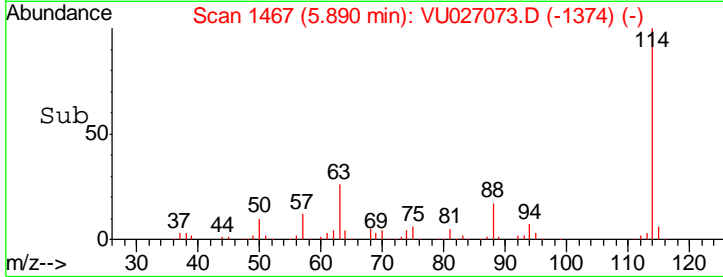
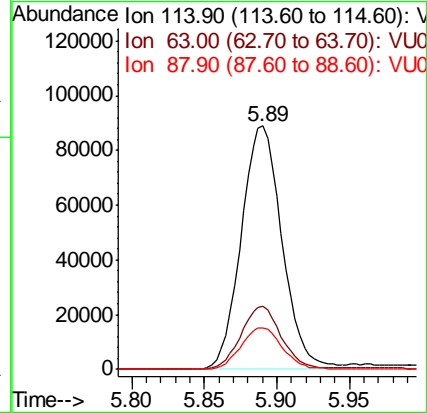
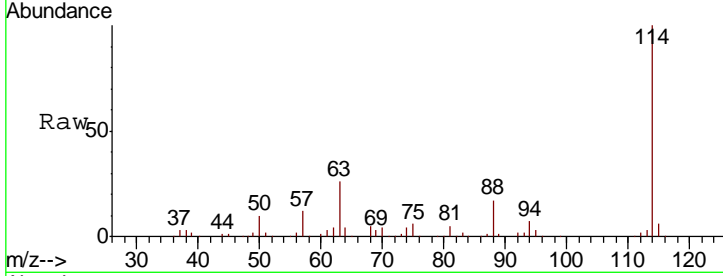




#34  
 1,4-Difluorobenzene  
 Concen: 50.000 ug/l  
 RT: 5.89 min Scan# 1467  
 Delta R.T. 0.00 min  
 Lab File: VU027073.D  
 Acq: 23 Sep 2018 15:42

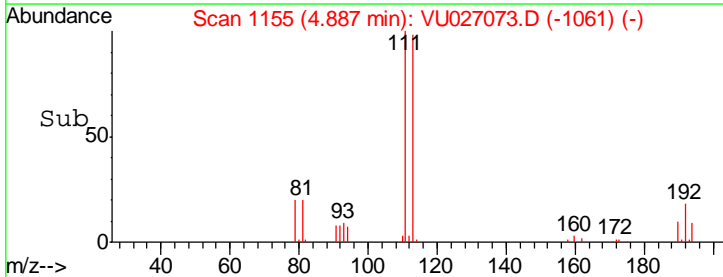
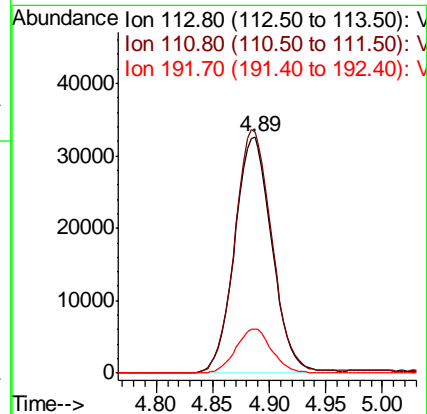
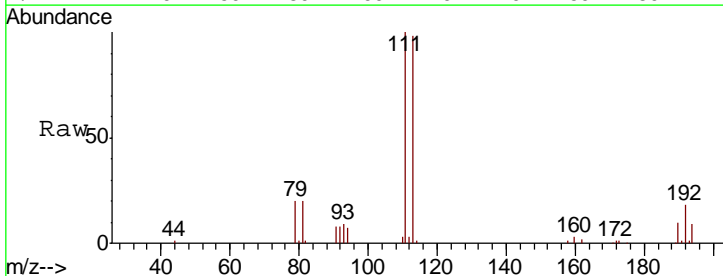
Instrument :  
 MSVOA\_U  
 ClientSampleId :  
 SA-PZ118S-20180914

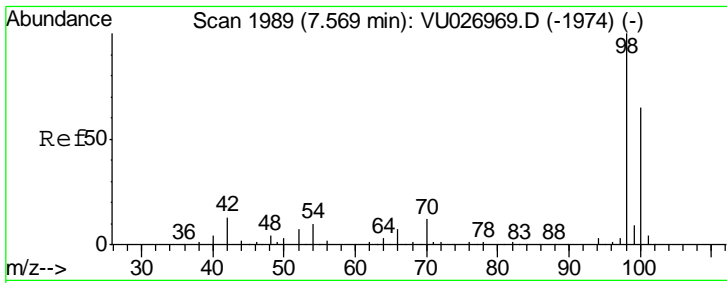
Tgt Ion	Resp	Lower	Upper
114	174528		
63	25.8	0.0	49.2
88	17.1	0.0	33.8



#35  
 Dibromofluoromethane  
 Concen: 49.590 ug/l  
 RT: 4.89 min Scan# 1155  
 Delta R.T. 0.00 min  
 Lab File: VU027073.D  
 Acq: 23 Sep 2018 15:42

Tgt Ion	Resp	Lower	Upper
113	75021		
111	102.5	82.2	123.4
192	18.1	15.2	22.8



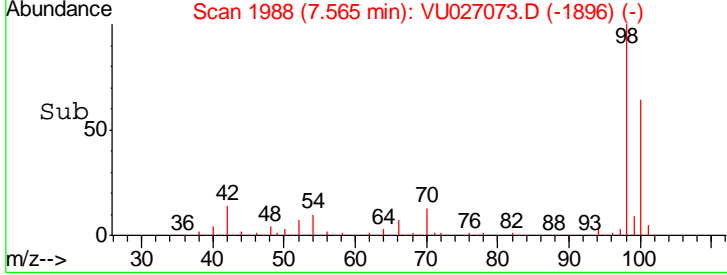
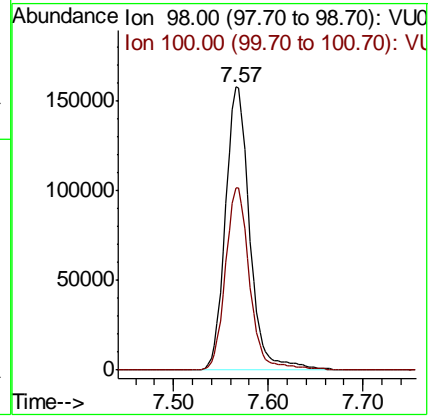
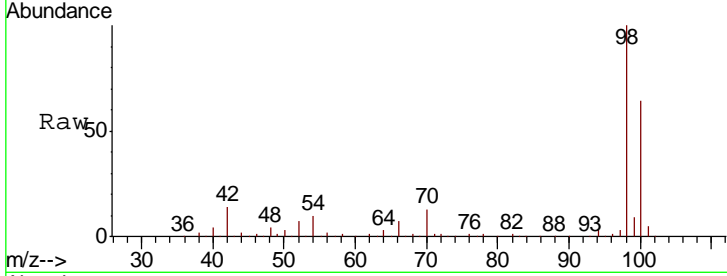


#50  
 Toluene-d8  
 Concen: 49.098 ug/l  
 RT: 7.57 min Scan# 1988  
 Delta R.T. -0.00 min  
 Lab File: VU027073.D  
 Acq: 23 Sep 2018 15:42

**Instrument :**  
 MSVOA\_U  
**ClientSampled :**  
 SA-PZ118S-20180914

Tgt Ion: 98 Resp: 283070

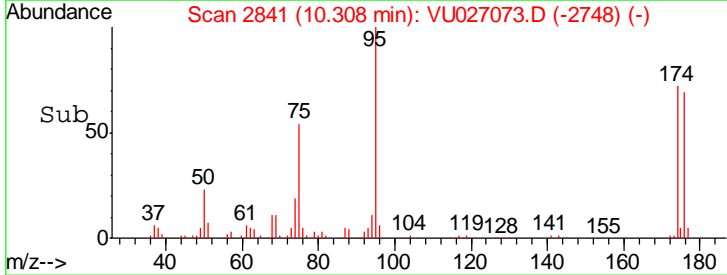
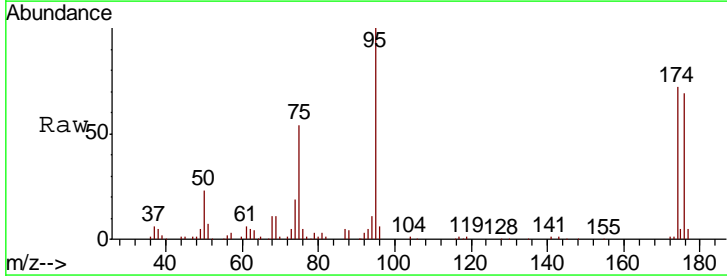
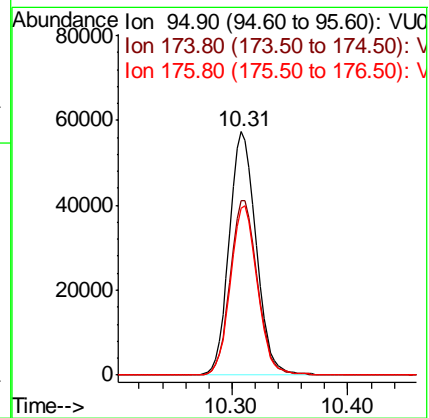
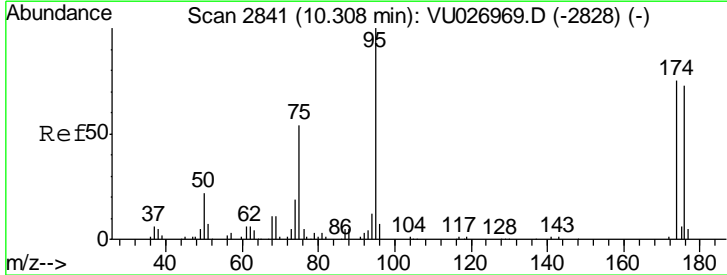
Ion	Ratio	Lower	Upper
98	100		
100	64.2	52.1	78.1

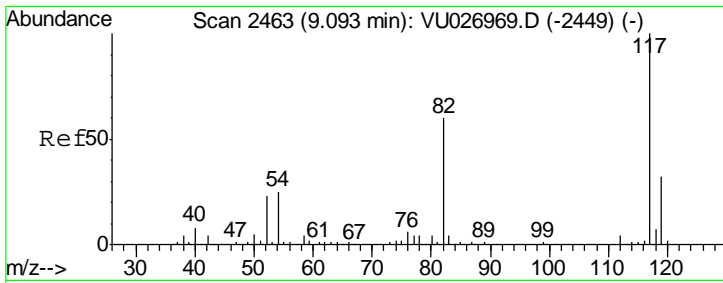


#62  
 4-Bromofluorobenzene  
 Concen: 46.427 ug/l  
 RT: 10.31 min Scan# 2841  
 Delta R.T. 0.00 min  
 Lab File: VU027073.D  
 Acq: 23 Sep 2018 15:42

Tgt Ion: 95 Resp: 91845

Ion	Ratio	Lower	Upper
95	100		
174	72.5	0.0	150.2
176	69.4	0.0	145.2

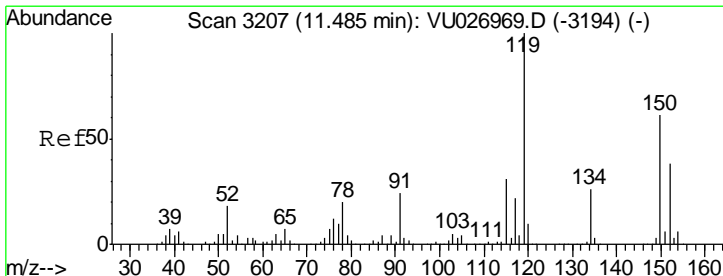
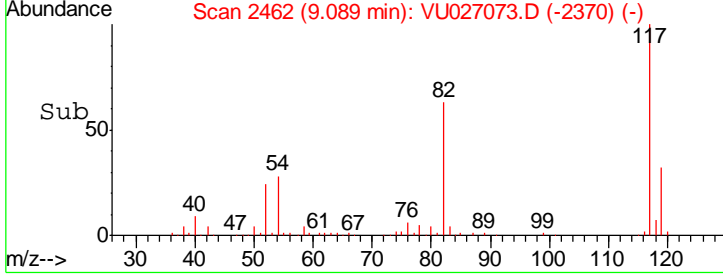
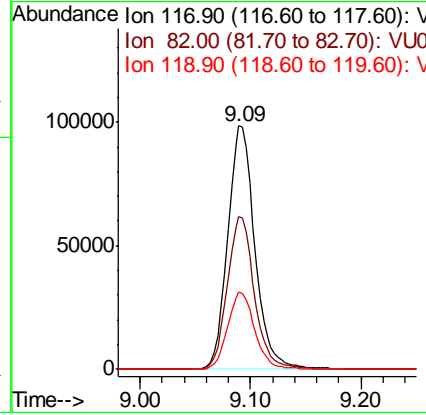
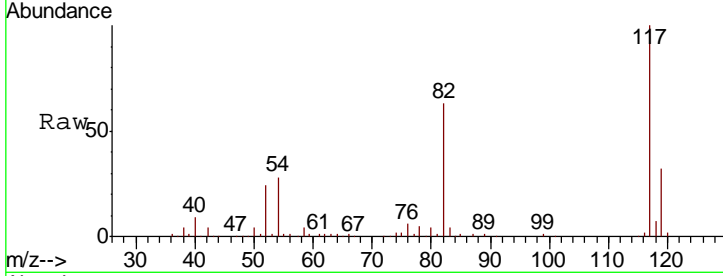




#63  
 Chlorobenzene-d5  
 Concen: 50.000 ug/l  
 RT: 9.09 min Scan# 2462  
 Delta R.T. -0.00 min  
 Lab File: VU027073.D  
 Acq: 23 Sep 2018 15:42

Instrument : MSVOA\_U  
 ClientSampled : SA-PZ118S-20180914

Tgt Ion	Resp	Lower	Upper
117	168320		
82	62.5	48.0	72.0
119	31.5	25.8	38.8



#72  
 1,4-Dichlorobenzene-d4  
 Concen: 50.000 ug/l  
 RT: 11.48 min Scan# 3207  
 Delta R.T. 0.00 min  
 Lab File: VU027073.D  
 Acq: 23 Sep 2018 15:42

Tgt Ion	Resp	Lower	Upper
152	76936		
115	62.5	44.9	134.5
150	160.2	0.0	355.8

