

Data Path : Z:\VOASRV\HPCHEM1\MSVOA U\DATA\VU092319\
 Data File : VU034756.D
 Acq On : 24 Sep 2019 00:27
 Operator : JC/SP
 Sample : K4932-13
 Misc : 5.0mL/MSVOA U/WATER
 ALS Vial : 33 Sample Multiplier: 1

Instrument :
 MSVOA_U
 ClientSampleId :
 BFDK1

Integration Parameters: LSCINT.P

Integrator: RTE
 Smoothing : OFF
 Sampling : 1
 Start Thrs: 0.2
 Stop Thrs : 0

Filtering: 5
 Min Area: 0 % of largest Peak
 Max Peaks: 100
 Peak Location: TOP

If leading or trailing edge < 100 prefer < Baseline drop else tangent >
 Peak separation: 5

Method : Z:\VOASRV\HPCHEM1\MSVOA_U\METHOD\SOMULM091919WMA.M
 Title : VOC Analysis

Signal : TIC

peak #	R.T. min	first scan	max scan	last scan	PK TY	peak height	corr. area	corr. % max.	% of total
1	1.177	22	27	35	rBV2	12233	13418	0.42%	0.041%
2	1.392	86	94	108	rBV	347258	370571	11.69%	1.131%
3	1.466	110	117	128	rVV	141001	157674	4.97%	0.481%
4	1.540	132	140	149	rVB2	35314	55167	1.74%	0.168%
5	1.672	173	181	203	rVB	273811	348893	11.01%	1.065%
6	2.257	351	363	372	rBV	502243	777270	24.52%	2.372%
7	2.305	372	378	393	rVB	151925	241744	7.63%	0.738%
8	2.434	414	418	422	rBV5	2845	3161	0.10%	0.010%
9	2.463	422	427	432	rVB3	4992	5565	0.18%	0.017%
10	2.608	466	472	480	rVB4	4541	7269	0.23%	0.022%
11	2.685	484	496	512	rBV	121922	226197	7.14%	0.690%
12	2.810	524	535	549	rVB3	9043	20089	0.63%	0.061%
13	3.167	633	646	657	rBV2	30361	65847	2.08%	0.201%
14	3.405	715	720	724	rVV6	4208	5075	0.16%	0.015%
15	3.961	880	893	894	rBV9	4570	6257	0.20%	0.019%
16	4.090	928	933	938	rBV6	2665	3545	0.11%	0.011%
17	4.151	939	952	972	rBV	271365	705720	22.26%	2.153%
18	4.620	1082	1098	1124	rBV	402040	952854	30.06%	2.908%
19	5.315	1291	1314	1341	rBV2	831236	2508922	79.15%	7.656%
20	5.527	1367	1380	1402	rBV	95958	212906	6.72%	0.650%
21	5.746	1443	1448	1451	rBV4	3037	3055	0.10%	0.009%
22	5.865	1471	1485	1505	rBV	672857	1360799	42.93%	4.152%
23	6.309	1608	1623	1640	rBV	583173	1170124	36.92%	3.570%
24	6.405	1646	1653	1671	rVB3	14125	33421	1.05%	0.102%
25	6.518	1681	1688	1693	rBV3	8686	12146	0.38%	0.037%
26	6.559	1695	1701	1704	rBV	14295	17415	0.55%	0.053%
27	6.685	1727	1740	1775	rBV	1734848	3169757	100.00%	9.672%
28	6.839	1783	1788	1797	rVB5	10678	17000	0.54%	0.052%
29	7.206	1890	1902	1922	rBV	335954	610462	19.26%	1.863%
30	7.398	1951	1962	1973	rBV	242547	416366	13.14%	1.270%
31	7.543	1993	2007	2022	rBV	1121704	2021921	63.79%	6.170%
32	7.829	2082	2096	2111	rBV	265214	482233	15.21%	1.471%
33	8.135	2177	2191	2207	rBV	441136	738079	23.29%	2.252%
34	8.212	2207	2215	2218	rVV2	30486	44297	1.40%	0.135%

Data Path : Z:\VOASRV\HPCHEM1\MSVOA U\DATA\VU092319\
 Data File : VU034756.D
 Acq On : 24 Sep 2019 00:27
 Operator : JC/SP
 Sample : K4932-13
 Misc : 5.0mL/MSVOA U/WATER
 ALS Vial : 33 Sample Multiplier: 1

Instrument :
 MSVOA_U
 ClientSampleId :
 BFDK1

Integration Parameters: LSCINT.P

Integrator: RTE
 Smoothing : OFF
 Sampling : 1
 Start Thrs: 0.2
 Stop Thrs : 0

Filtering: 5
 Min Area: 0 % of largest Peak
 Max Peaks: 100
 Peak Location: TOP

If leading or trailing edge < 100 prefer < Baseline drop else tangent >
 Peak separation: 5

Method : Z:\VOASRV\HPCHEM1\MSVOA_U\METHOD\SOMULM091919WMA.M
 Title : VOC Analysis

35	8.241	2219	2224	2229	rVV3	51705	78509	2.48%	0.240%
36	8.289	2229	2239	2262	rVV	1073375	1938896	61.17%	5.916%
37	8.395	2262	2272	2302	rVV	643895	1096483	34.59%	3.346%
38	8.511	2302	2308	2323	rVB2	21396	38866	1.23%	0.119%
39	8.884	2411	2424	2448	rBV	840986	1346530	42.48%	4.109%
40	9.067	2462	2481	2508	rBV	1014873	1751636	55.26%	5.345%
41	9.231	2521	2532	2544	rVV	42275	70722	2.23%	0.216%
42	9.353	2552	2570	2585	rVV	63429	113727	3.59%	0.347%
43	9.421	2585	2591	2599	rVV7	5680	9387	0.30%	0.029%
44	9.588	2632	2643	2654	rBV2	25409	46193	1.46%	0.141%
45	9.752	2683	2694	2711	rVV3	127012	240850	7.60%	0.735%
46	9.916	2738	2745	2747	rBV3	5978	6600	0.21%	0.020%
47	10.016	2772	2776	2782	rBV7	4377	4780	0.15%	0.015%
48	10.141	2803	2815	2827	rVB3	20077	40205	1.27%	0.123%
49	10.292	2856	2862	2864	rBV7	2919	3352	0.11%	0.010%
50	10.408	2886	2898	2917	rVV	772007	1244176	39.25%	3.796%
51	10.572	2941	2949	2957	rVV5	7563	14822	0.47%	0.045%
52	10.659	2966	2976	2993	rBV2	49482	112546	3.55%	0.343%
53	10.749	2997	3004	3011	rVV2	30247	46010	1.45%	0.140%
54	10.794	3012	3018	3031	rVB2	10743	22959	0.72%	0.070%
55	10.900	3043	3051	3058	rBV2	4781	8393	0.26%	0.026%
56	10.951	3058	3067	3087	rVB5	35864	85845	2.71%	0.262%
57	11.125	3111	3121	3135	rBV	91106	148107	4.67%	0.452%
58	11.193	3139	3142	3148	rBV6	3083	3797	0.12%	0.012%
59	11.302	3172	3176	3177	rBV4	4156	2998	0.09%	0.009%
60	11.353	3186	3192	3195	rBV7	4349	4629	0.15%	0.014%
61	11.405	3200	3208	3213	rVV8	12059	17963	0.57%	0.055%
62	11.459	3214	3225	3244	rVV	987540	1594213	50.29%	4.865%
63	11.549	3245	3253	3262	rVB	61812	93134	2.94%	0.284%
64	11.739	3302	3312	3330	rBV	187826	345483	10.90%	1.054%
65	11.836	3331	3342	3369	rVV	1083649	1826340	57.62%	5.573%
66	11.958	3372	3380	3396	rVB2	64645	113496	3.58%	0.346%
67	12.035	3401	3404	3413	rVB9	6703	8584	0.27%	0.026%
68	12.125	3422	3432	3448	rBV3	79019	149774	4.73%	0.457%
69	12.231	3458	3465	3472	rVB2	21172	29708	0.94%	0.091%
70	12.334	3489	3497	3507	rBV4	17598	27855	0.88%	0.085%
71	12.414	3519	3522	3530	rVB10	6421	6320	0.20%	0.019%

Data Path : Z:\VOASRV\HPCHEM1\MSVOA U\DATA\VU092319\
 Data File : VU034756.D
 Acq On : 24 Sep 2019 00:27
 Operator : JC/SP
 Sample : K4932-13
 Misc : 5.0mL/MSVOA U/WATER
 ALS Vial : 33 Sample Multiplier: 1

Instrument :
 MSVOA_U
 ClientSampleId :
 BFDK1

Integration Parameters: LSCINT.P

Integrator: RTE
 Smoothing : OFF
 Sampling : 1
 Start Thrs: 0.2
 Stop Thrs : 0

Filtering: 5
 Min Area: 0 % of largest Peak
 Max Peaks: 100
 Peak Location: TOP

If leading or trailing edge < 100 prefer < Baseline drop else tangent >
 Peak separation: 5

Method : Z:\VOASRV\HPCHEM1\MSVOA_U\METHOD\SOMULM091919WMA.M
 Title : VOC Analysis

72	12.472	3533	3540	3543	rBV7	5089	6131	0.19%	0.019%
73	12.591	3571	3577	3585	rBV3	15913	24933	0.79%	0.076%
74	12.681	3598	3605	3618	rVB2	22050	35366	1.12%	0.108%
75	12.945	3679	3687	3697	rBV3	28348	44149	1.39%	0.135%
76	13.102	3727	3736	3745	rBV2	46040	68328	2.16%	0.208%
77	13.164	3748	3755	3767	rVB3	31612	55051	1.74%	0.168%
78	13.218	3768	3772	3778	rVB9	3701	3685	0.12%	0.011%
79	13.273	3778	3789	3803	rBV	100987	178584	5.63%	0.545%
80	13.373	3813	3820	3832	rVB	20704	38259	1.21%	0.117%
81	13.434	3832	3839	3848	rVB7	9942	17766	0.56%	0.054%
82	13.488	3848	3856	3860	rBV9	12109	18971	0.60%	0.058%
83	13.591	3881	3888	3891	rBV7	10538	14483	0.46%	0.044%
84	13.720	3915	3928	3955	rBV	1130185	1901685	59.99%	5.803%
85	13.839	3960	3965	3977	rVB3	24624	43921	1.39%	0.134%
86	14.321	4106	4115	4124	rBV3	10369	20520	0.65%	0.063%
87	14.453	4150	4156	4166	rVB3	8115	13214	0.42%	0.040%
88	14.520	4174	4177	4190	rVB3	10342	15204	0.48%	0.046%
89	14.623	4204	4209	4217	rBV10	8893	13063	0.41%	0.040%
90	14.800	4260	4264	4271	rBV5	8569	9229	0.29%	0.028%
91	14.858	4271	4282	4299	rBV	147165	262624	8.29%	0.801%
92	14.977	4316	4319	4325	rBV8	3253	3078	0.10%	0.009%
93	15.041	4328	4339	4358	rVB	222233	368170	11.62%	1.123%
94	15.594	4508	4511	4516	rBV6	3640	3010	0.09%	0.009%
95	15.787	4563	4571	4575	rBV8	9313	12315	0.39%	0.038%
96	15.897	4600	4605	4609	rBV6	6052	6510	0.21%	0.020%
97	16.041	4643	4650	4659	rBV6	22435	37209	1.17%	0.114%
98	16.237	4708	4711	4714	rBV5	3817	3325	0.10%	0.010%
99	16.414	4760	4766	4767	rBV6	5003	5415	0.17%	0.017%
100	16.720	4853	4861	4875	rBV4	40148	68756	2.17%	0.210%

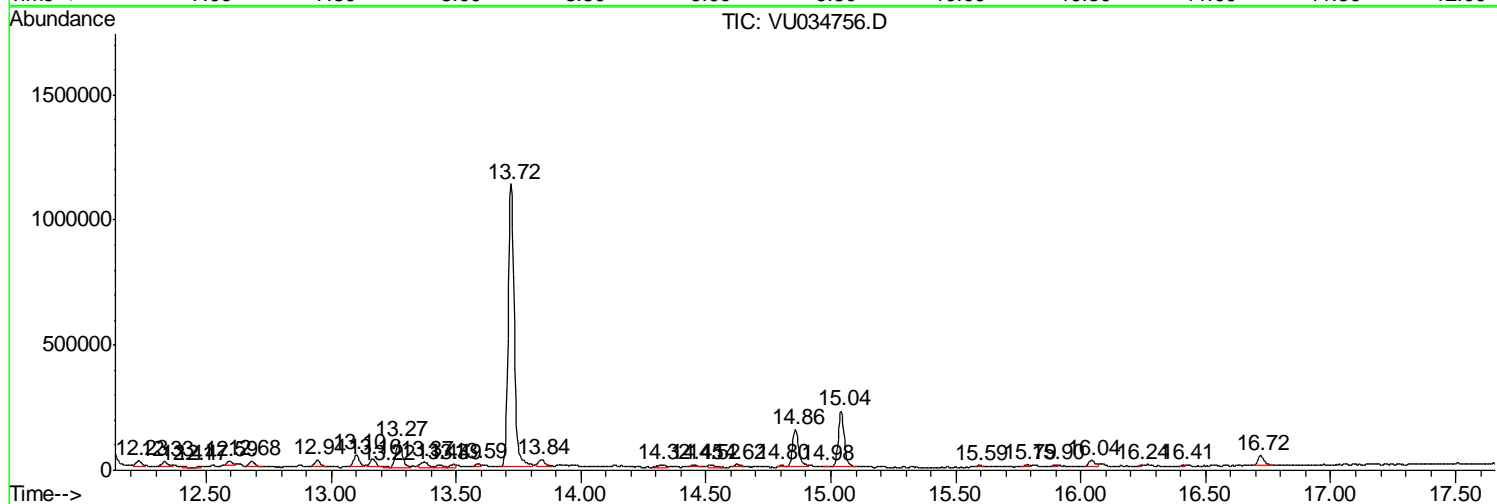
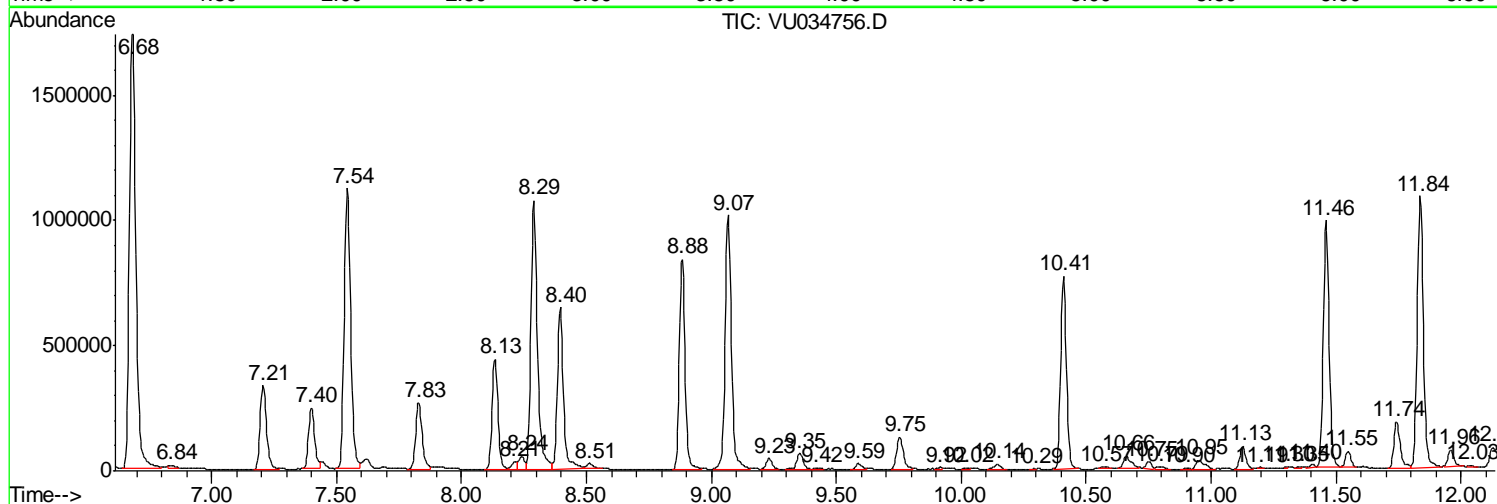
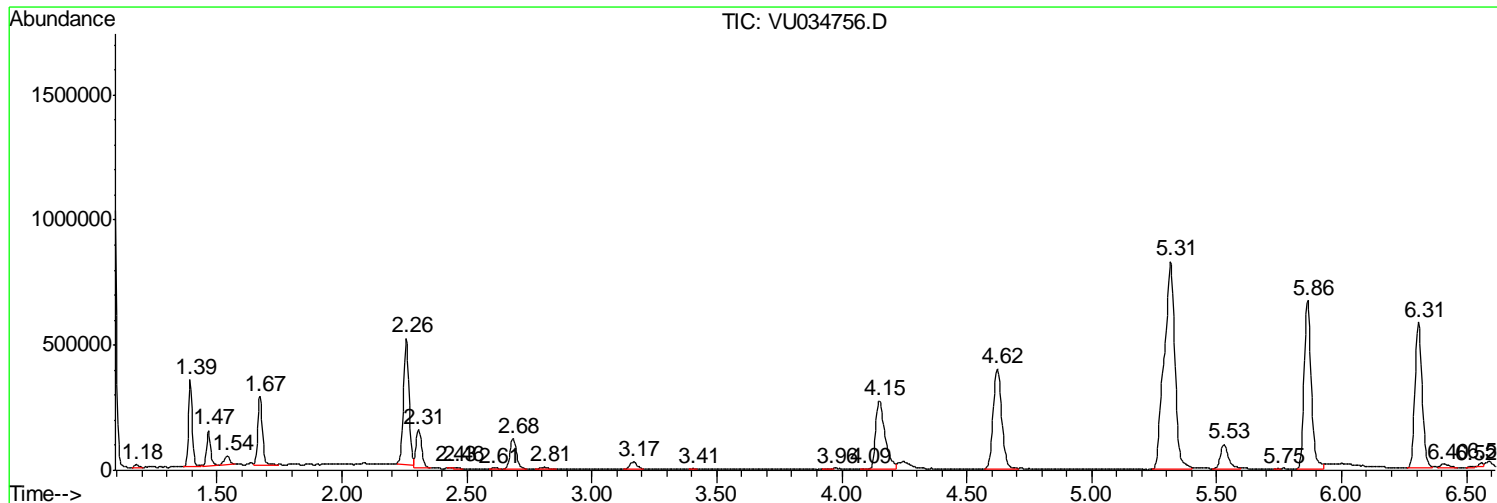
Sum of corrected areas: 32772061

Data Path : Z:\VOASRV\HPCHEM1\MSVOA U\DATA\VU092319\
 Data File : VU034756.D
 Acq On : 24 Sep 2019 00:27
 Operator : JC/SP
 Sample : K4932-13
 Misc : 5.0mL/MSVOA U/WATER
 ALS Vial : 33 Sample Multiplier: 1

Instrument :
 MSVOA_U
 ClientSampleId :
 BFDK1

Quant Method : Z:\VOASRV\HPCHEM1\MSVOA_U\METHOD\SOMULM091919WMA.M
 Quant Title : VOC Analysis

TIC Library : C:\DATABASE\NIST11.L
 TIC Integration Parameters: LSCINT.P



Data Path : Z:\VOASRV\HPCHEM1\MSVOA U\DATA\VU092319\
 Data File : VU034756.D
 Acq On : 24 Sep 2019 00:27
 Operator : JC/SP
 Sample : K4932-13
 Misc : 5.0mL/MSVOA U/WATER
 ALS Vial : 33 Sample Multiplier: 1

Instrument :
 MSVOA_U
 ClientSampleID :
 BFDK1

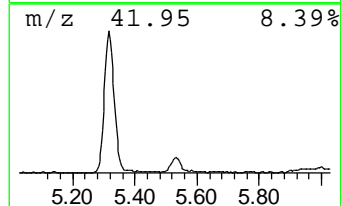
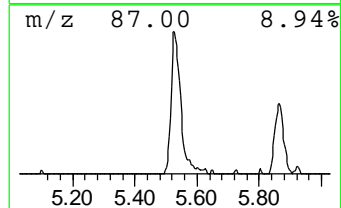
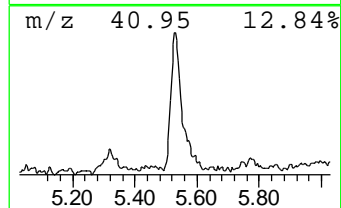
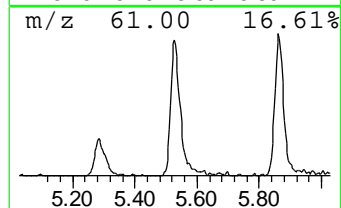
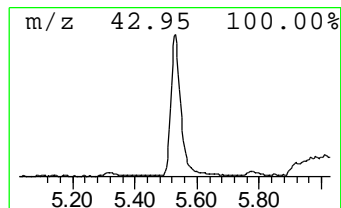
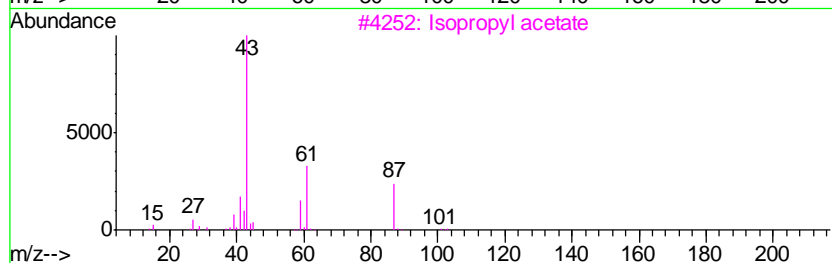
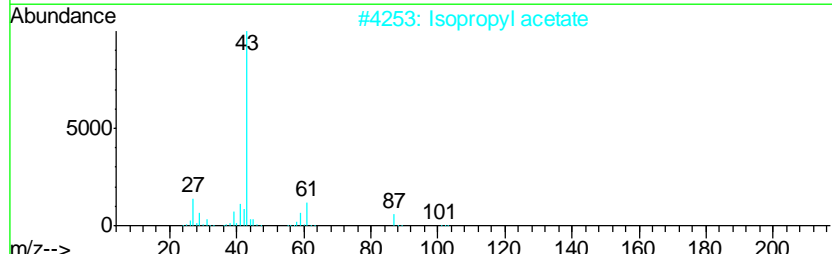
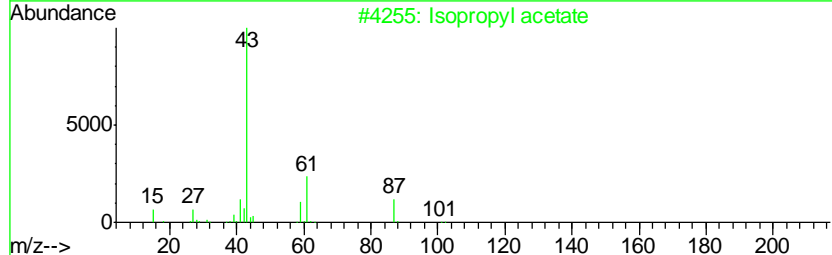
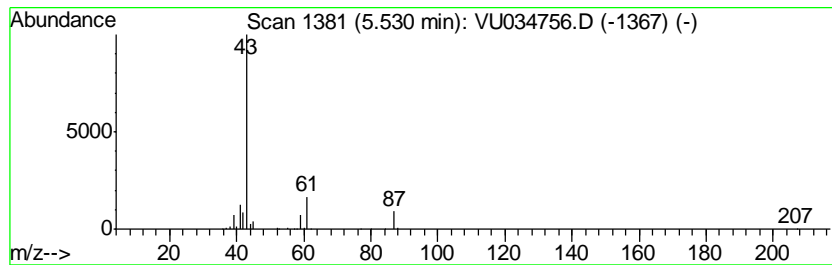
Quant Method : Z:\VOASRV\HPCHEM1\MSVOA_U\METHOD\SOMULM091919WMA.M
 Quant Title : VOC Analysis

TIC Library : C:\DATABASE\NIST11.L
 TIC Integration Parameters: LSCINT.P

 Peak Number 2 Isopropyl acetate Concentration Rank 11

R.T.	EstConc	Area	Relative to ISTD	R.T.
5.53	7.82 ug/L	212906	1,4-Difluorobenzene	5.86

Hit#	of	Tentative ID	MW	MolForm	CAS#	Qual
1	5	Isopropyl acetate	102	C5H10O2	000108-21-4	83
2		Isopropyl acetate	102	C5H10O2	000108-21-4	72
3		Isopropyl acetate	102	C5H10O2	000108-21-4	72
4		Isopropyl acetate	102	C5H10O2	000108-21-4	56
5		Propane, 1-(1-methylethoxy)-	102	C6H14O	000627-08-7	23



Data Path : Z:\VOASRV\HPCHEM1\MSVOA U\DATA\VU092319\
 Data File : VU034756.D
 Acq On : 24 Sep 2019 00:27
 Operator : JC/SP
 Sample : K4932-13
 Misc : 5.0mL/MSVOA U/WATER
 ALS Vial : 33 Sample Multiplier: 1

Instrument :
 MSVOA_U
 ClientSampled :
 BFDK1

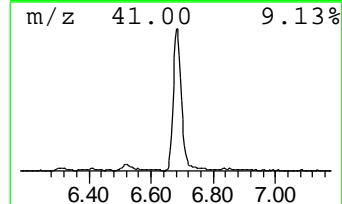
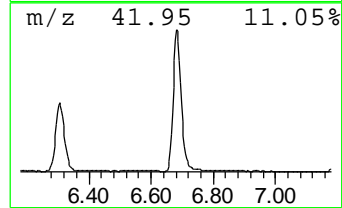
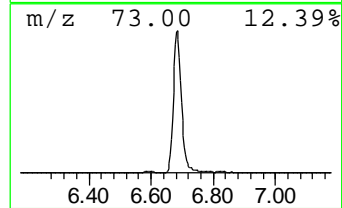
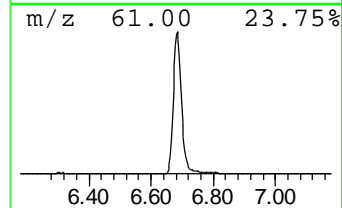
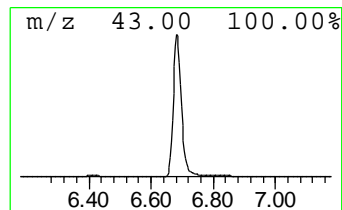
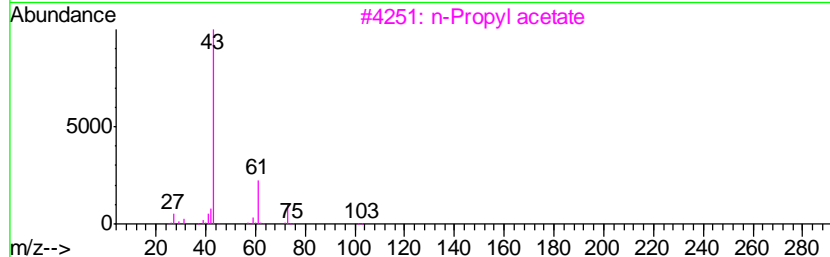
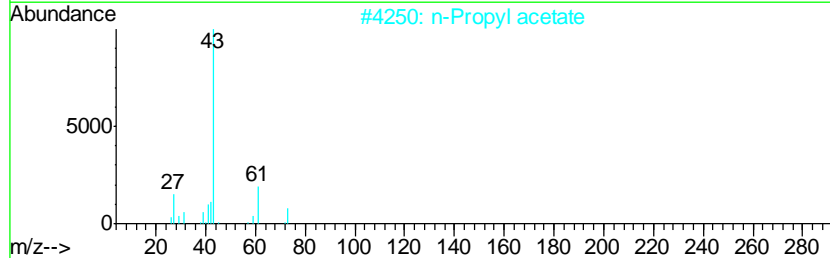
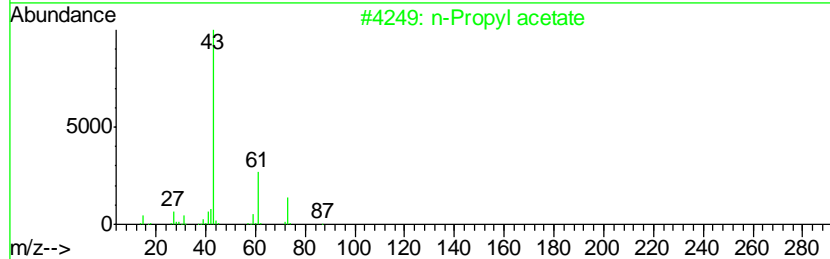
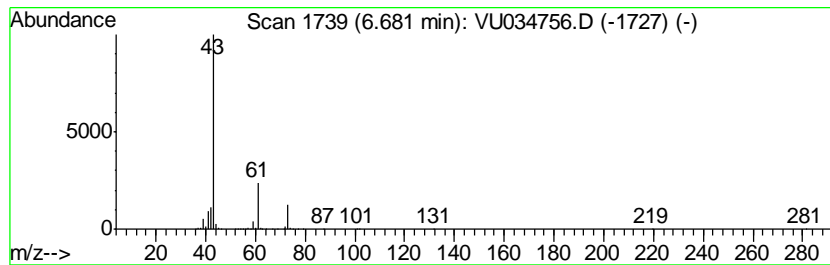
Quant Method : Z:\VOASRV\HPCHEM1\MSVOA_U\METHOD\SOMULM091919WMA.M
 Quant Title : VOC Analysis

TIC Library : C:\DATABASE\NIST11.L
 TIC Integration Parameters: LSCINT.P

 Peak Number 3 n-Propyl acetate Concentration Rank 1

R.T.	EstConc	Area	Relative to ISTD	R.T.
6.68	116.47 ug/L	3169760	1,4-Difluorobenzene	5.86

Hit#	of	Tentative ID	MW	MolForm	CAS#	Qual
1	5	n-Propyl acetate	102	C5H10O2	000109-60-4	83
2		n-Propyl acetate	102	C5H10O2	000109-60-4	78
3		n-Propyl acetate	102	C5H10O2	000109-60-4	78
4		Isopropyl acetate	102	C5H10O2	000108-21-4	38
5		Isobutylamine	73	C4H11N	000078-81-9	7



Data Path : Z:\VOASRV\HPCHEM1\MSVOA U\DATA\VU092319\
 Data File : VU034756.D
 Acq On : 24 Sep 2019 00:27
 Operator : JC/SP
 Sample : K4932-13
 Misc : 5.0mL/MSVOA U/WATER
 ALS Vial : 33 Sample Multiplier: 1

Instrument :
 MSVOA_U
 ClientSampleID :
 BFDK1

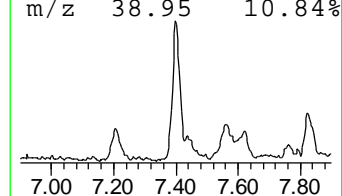
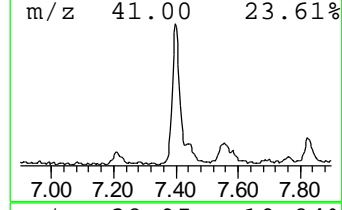
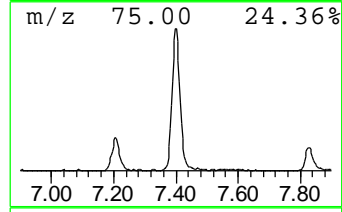
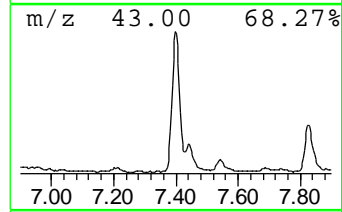
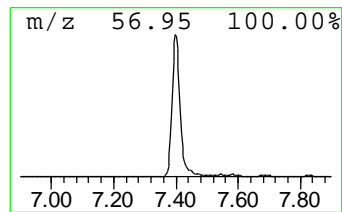
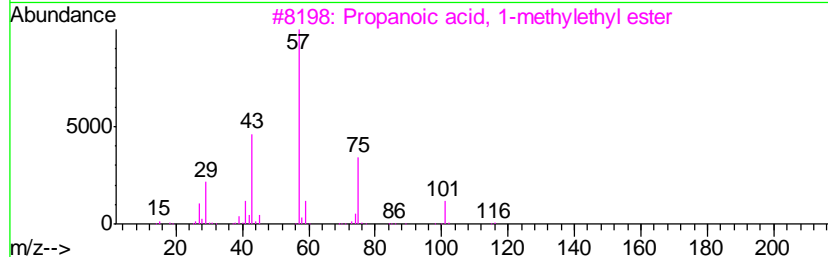
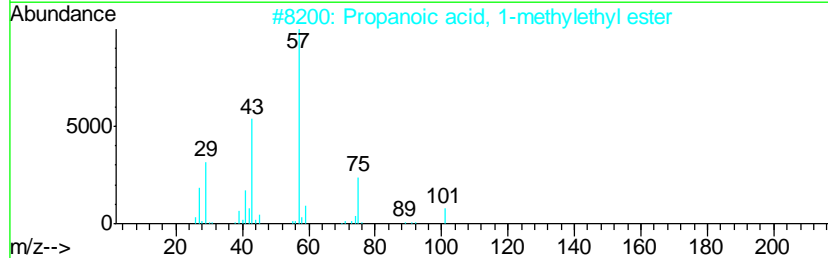
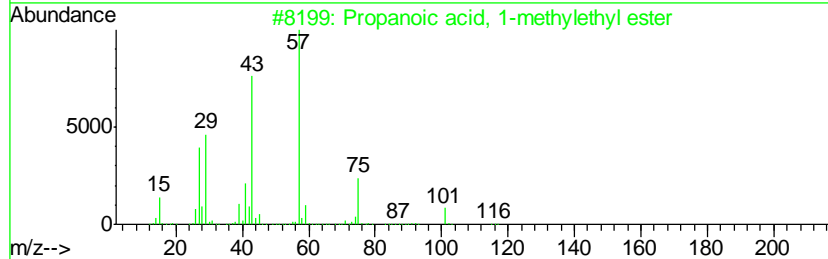
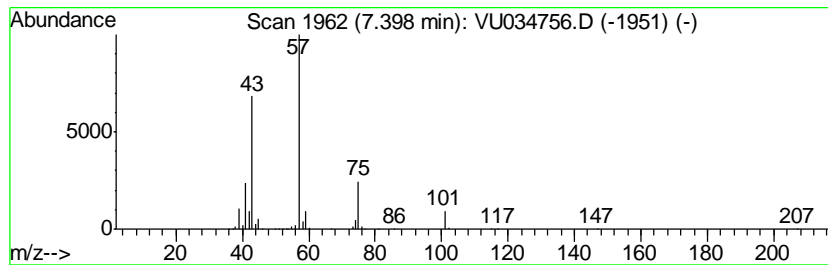
Quant Method : Z:\VOASRV\HPCHEM1\MSVOA_U\METHOD\SOMULM091919WMA.M
 Quant Title : VOC Analysis

TIC Library : C:\DATABASE\NIST11.L
 TIC Integration Parameters: LSCINT.P

 Peak Number 5 Propanoic acid, 1-methyleth... Concentration Rank 7

R.T.	EstConc	Area	Relative to ISTD	R.T.
7.40	15.30 ug/L	416366	1,4-Difluorobenzene	5.86

Hit#	of	Tentative ID	MW	MolForm	CAS#	Qual
1	5	Propanoic acid, 1-methylethyl ester	116	C6H12O2	000637-78-5	83
2		Propanoic acid, 1-methylethyl ester	116	C6H12O2	000637-78-5	83
3		Propanoic acid, 1-methylethyl ester	116	C6H12O2	000637-78-5	72
4		Propanoic acid, propyl ester	116	C6H12O2	000106-36-5	56
5		Propanoic acid, 1-methylethyl ester	116	C6H12O2	000637-78-5	45



Data Path : Z:\VOASRV\HPCHEM1\MSVOA U\DATA\VU092319\
 Data File : VU034756.D
 Acq On : 24 Sep 2019 00:27
 Operator : JC/SP
 Sample : K4932-13
 Misc : 5.0mL/MSVOA U/WATER
 ALS Vial : 33 Sample Multiplier: 1

Instrument :
 MSVOA_U
 ClientSampleID :
 BFDK1

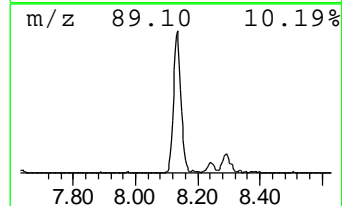
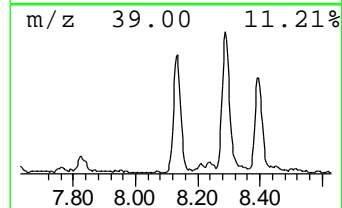
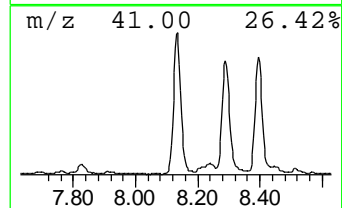
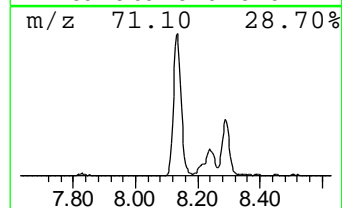
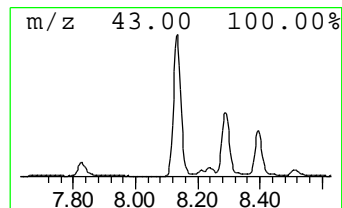
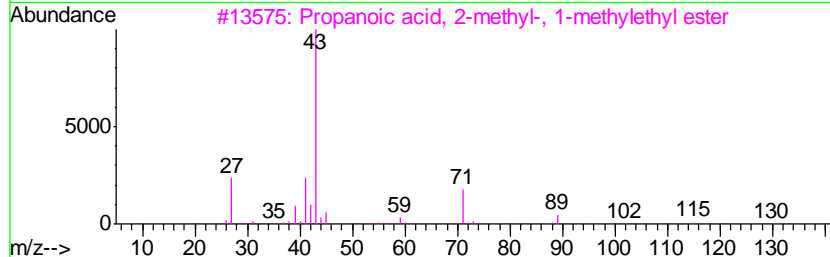
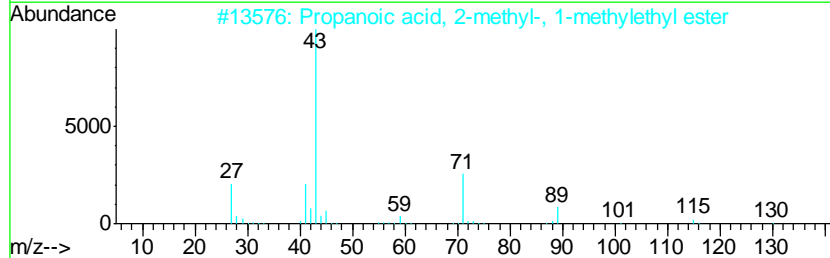
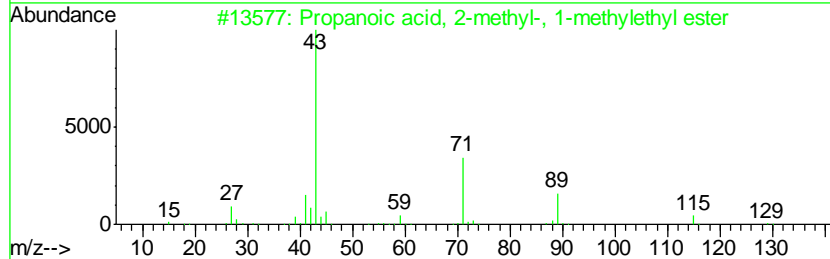
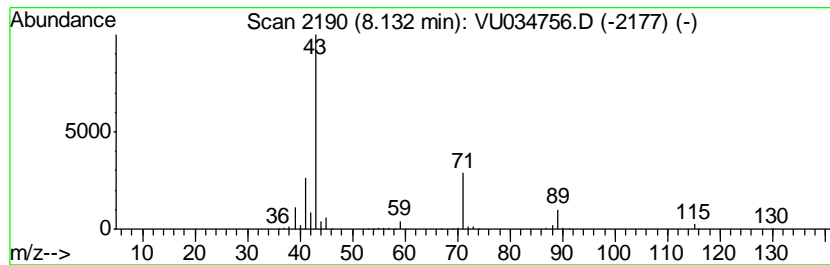
Quant Method : Z:\VOASRV\HPCHEM1\MSVOA_U\METHOD\SOMULM091919WMA.M
 Quant Title : VOC Analysis

TIC Library : C:\DATABASE\NIST11.L
 TIC Integration Parameters: LSCINT.P

 Peak Number 6 Propanoic acid, 2-methyl-, ... Concentration Rank 6

R.T.	EstConc	Area	Relative to ISTD	R.T.
8.13	21.07 ug/L	738079	Chlorobenzene-d5	9.07

Hit#	of	Tentative ID	MW	MolForm	CAS#	Qual
1	5	Propanoic acid, 2-methyl-, 1-met...	130	C7H14O2	000617-50-5	83
2		Propanoic acid, 2-methyl-, 1-met...	130	C7H14O2	000617-50-5	83
3		Propanoic acid, 2-methyl-, 1-met...	130	C7H14O2	000617-50-5	59
4		Propanoic acid, 2-methyl-, 1-met...	130	C7H14O2	000617-50-5	59
5		Butanoic acid, 1-methylethyl ester	130	C7H14O2	000638-11-9	38



Data Path : Z:\VOASRV\HPCHEM1\MSVOA U\DATA\VU092319\
 Data File : VU034756.D
 Acq On : 24 Sep 2019 00:27
 Operator : JC/SP
 Sample : K4932-13
 Misc : 5.0mL/MSVOA U/WATER
 ALS Vial : 33 Sample Multiplier: 1

Instrument :
 MSVOA_U
 ClientSampleID :
 BFDK1

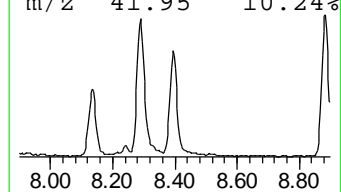
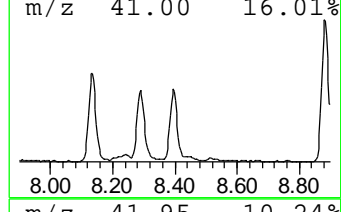
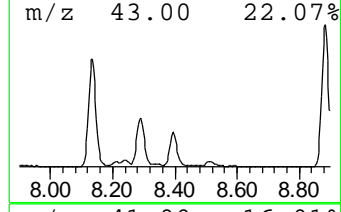
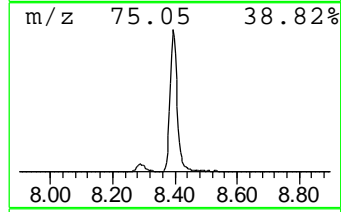
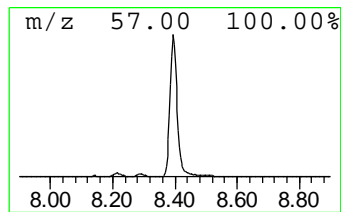
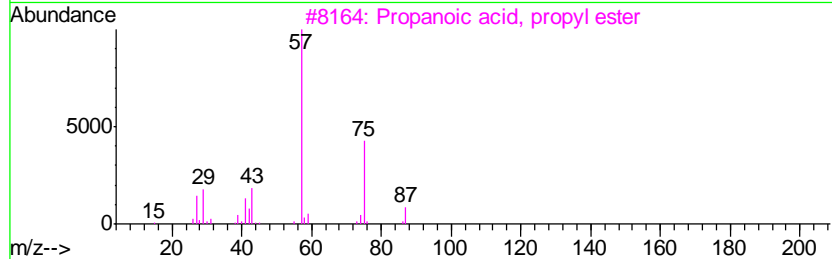
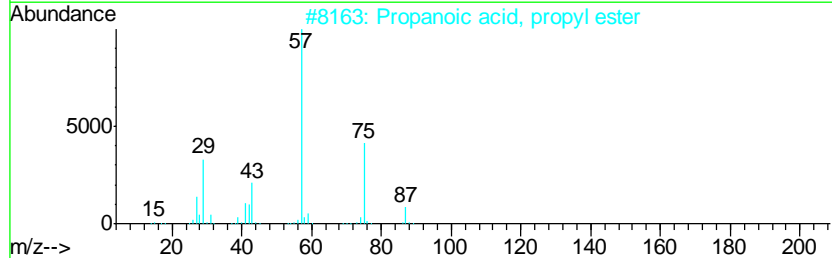
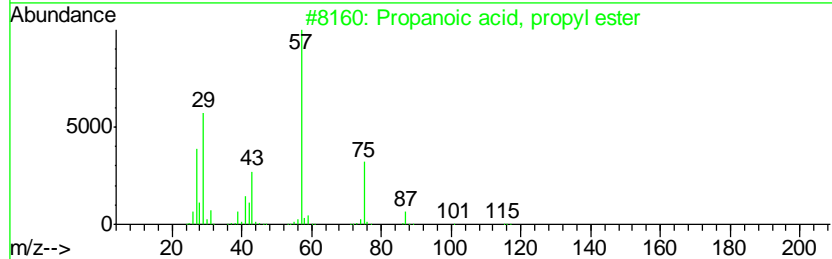
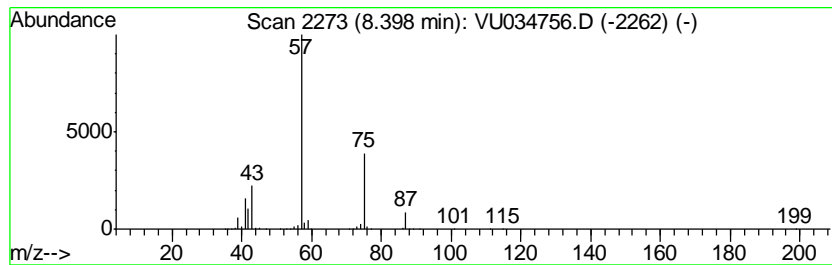
Quant Method : Z:\VOASRV\HPCHEM1\MSVOA_U\METHOD\SOMULM091919WMA.M
 Quant Title : VOC Analysis

TIC Library : C:\DATABASE\NIST11.L
 TIC Integration Parameters: LSCINT.P

 Peak Number 7 Propanoic acid, propyl ester Concentration Rank 4

R.T.	EstConc	Area	Relative to ISTD	R.T.
8.40	31.30 ug/L	1096480	Chlorobenzene-d5	9.07

Hit#	of	Tentative ID	MW	MolForm	CAS#	Qual
1	5	Propanoic acid, propyl ester	116	C6H12O2	000106-36-5	83
2		Propanoic acid, propyl ester	116	C6H12O2	000106-36-5	83
3		Propanoic acid, propyl ester	116	C6H12O2	000106-36-5	78
4		Propanoic acid, propyl ester	116	C6H12O2	000106-36-5	74
5		Propanoic acid, butyl ester	130	C7H14O2	000590-01-2	38



Data Path : Z:\VOASRV\HPCHEM1\MSVOA U\DATA\VU092319\
 Data File : VU034756.D
 Acq On : 24 Sep 2019 00:27
 Operator : JC/SP
 Sample : K4932-13
 Misc : 5.0mL/MSVOA U/WATER
 ALS Vial : 33 Sample Multiplier: 1

Instrument :
 MSVOA_U
 ClientSampleID :
 BFDK1

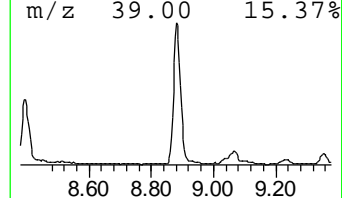
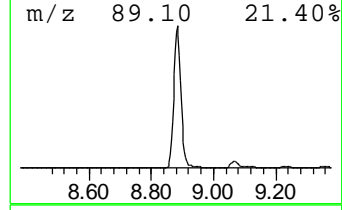
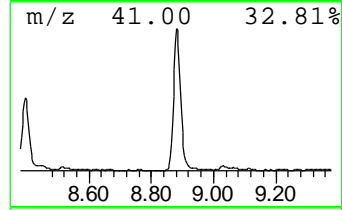
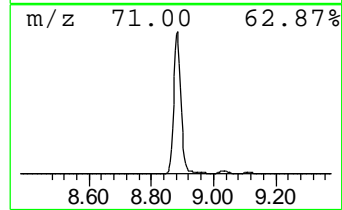
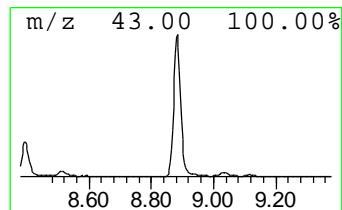
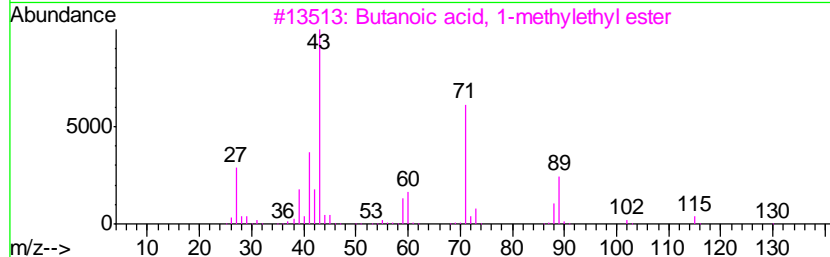
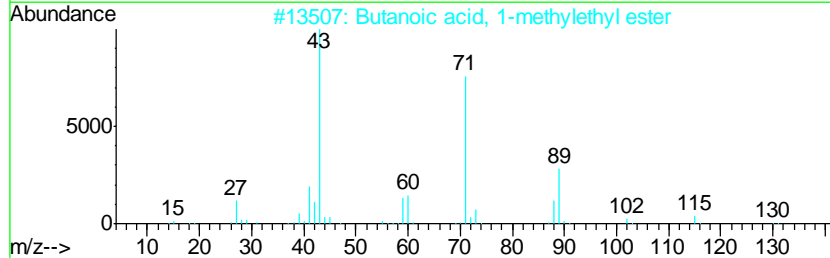
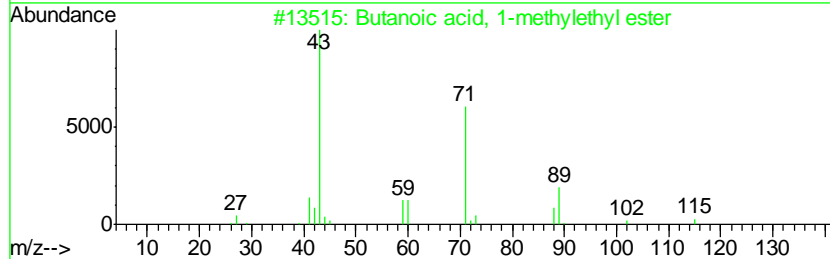
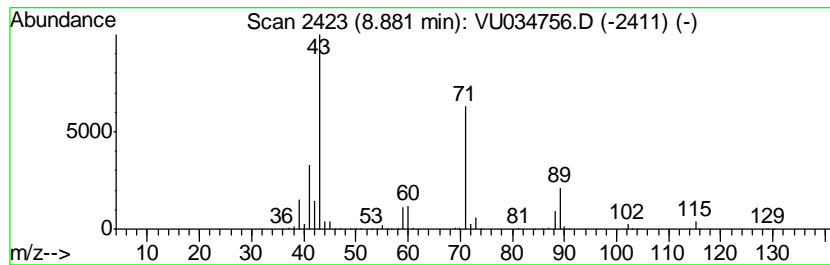
Quant Method : Z:\VOASRV\HPCHEM1\MSVOA_U\METHOD\SOMULM091919WMA.M
 Quant Title : VOC Analysis

TIC Library : C:\DATABASE\NIST11.L
 TIC Integration Parameters: LSCINT.P

 Peak Number 8 Butanoic acid, 1-methylethy... Concentration Rank 3

R.T.	EstConc	Area	Relative to ISTD	R.T.
8.88	38.44 ug/L	1346530	Chlorobenzene-d5	9.07

Hit#	of	Tentative ID	MW	MolForm	CAS#	Qual
1	5	Butanoic acid, 1-methylethyl ester	130	C7H14O2	000638-11-9	90
2		Butanoic acid, 1-methylethyl ester	130	C7H14O2	000638-11-9	90
3		Butanoic acid, 1-methylethyl ester	130	C7H14O2	000638-11-9	90
4		Butanoic acid, 1-methylethyl ester	130	C7H14O2	000638-11-9	78
5		Propanoic acid, 2-methyl-, propy...	130	C7H14O2	000644-49-5	59



Data Path : Z:\VOASRV\HPCHEM1\MSVOA U\DATA\VU092319\
 Data File : VU034756.D
 Acq On : 24 Sep 2019 00:27
 Operator : JC/SP
 Sample : K4932-13
 Misc : 5.0mL/MSVOA U/WATER
 ALS Vial : 33 Sample Multiplier: 1

Instrument :
 MSVOA_U
 ClientSampleID :
 BFDK1

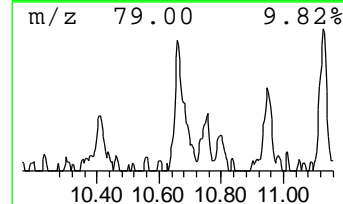
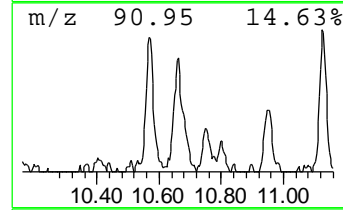
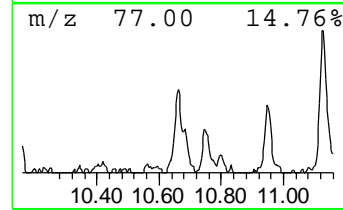
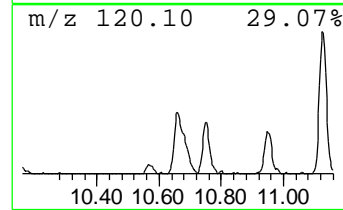
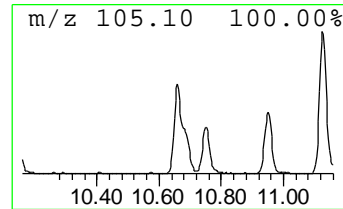
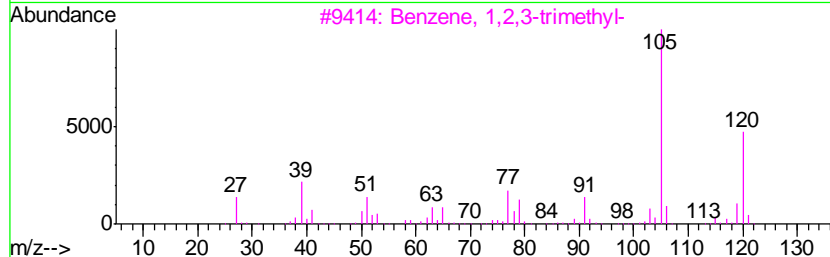
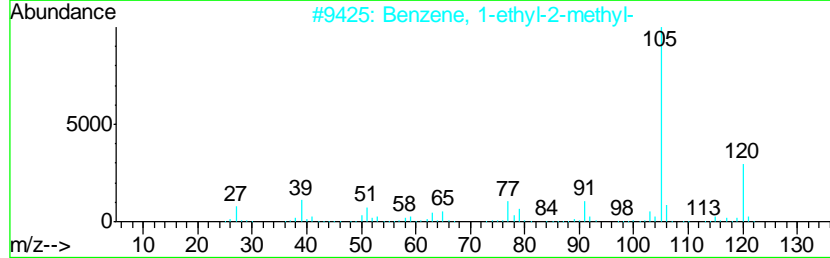
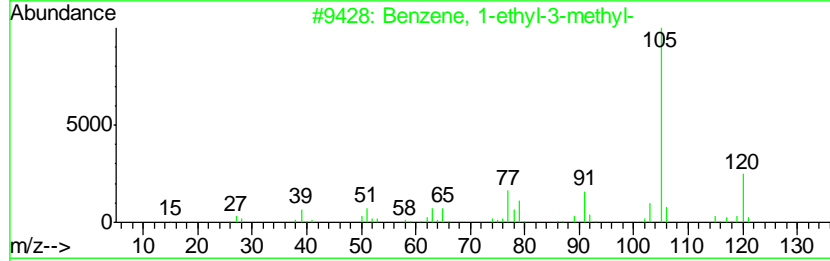
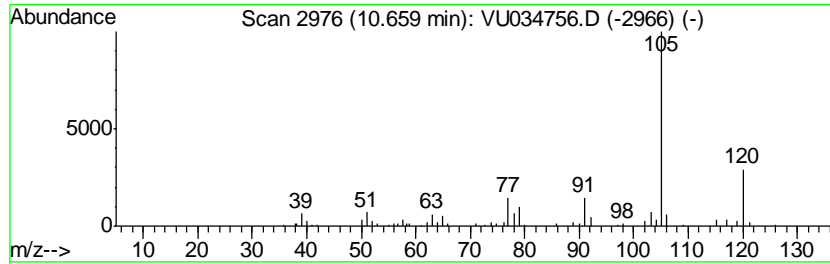
Quant Method : Z:\VOASRV\HPCHEM1\MSVOA_U\METHOD\SOMULM091919WMA.M
 Quant Title : VOC Analysis

TIC Library : C:\DATABASE\NIST11.L
 TIC Integration Parameters: LSCINT.P

 Peak Number 9 Benzene, 1-ethyl-3-methyl- Concentration Rank 17

R.T.	EstConc	Area	Relative to ISTD	R.T.
10.66	3.53 ug/L	112546	1,4-Dichlorobenzene-d4	11.46

Hit#	of	Tentative ID	MW	MolForm	CAS#	Qual
1	5	Benzene, 1-ethyl-3-methyl-	120	C9H12	000620-14-4	94
2		Benzene, 1-ethyl-2-methyl-	120	C9H12	000611-14-3	91
3		Benzene, 1,2,3-trimethyl-	120	C9H12	000526-73-8	91
4		Mesitylene	120	C9H12	000108-67-8	91
5		Benzene, 1-ethyl-4-methyl-	120	C9H12	000622-96-8	90



Data Path : Z:\VOASRV\HPCHEM1\MSVOA U\DATA\VU092319\
 Data File : VU034756.D
 Acq On : 24 Sep 2019 00:27
 Operator : JC/SP
 Sample : K4932-13
 Misc : 5.0mL/MSVOA U/WATER
 ALS Vial : 33 Sample Multiplier: 1

Instrument :
 MSVOA_U
 ClientSampleID :
 BFDK1

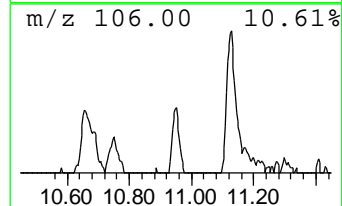
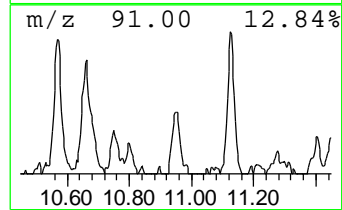
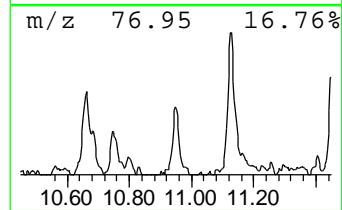
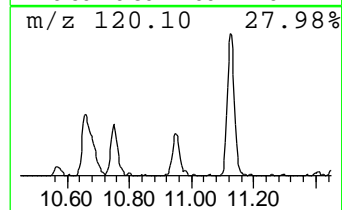
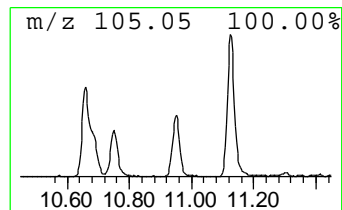
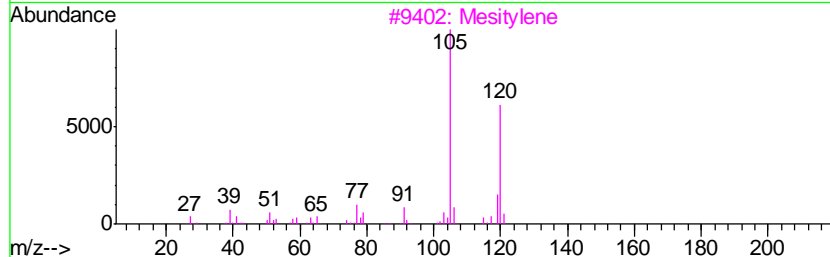
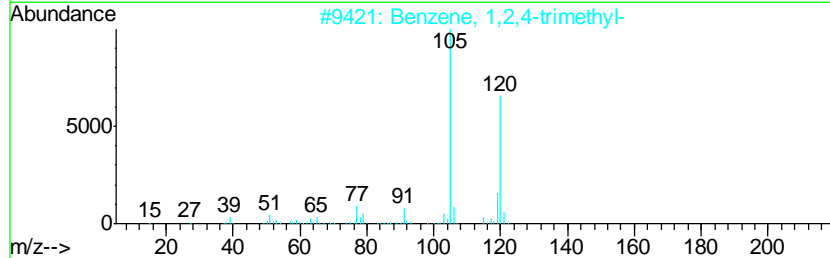
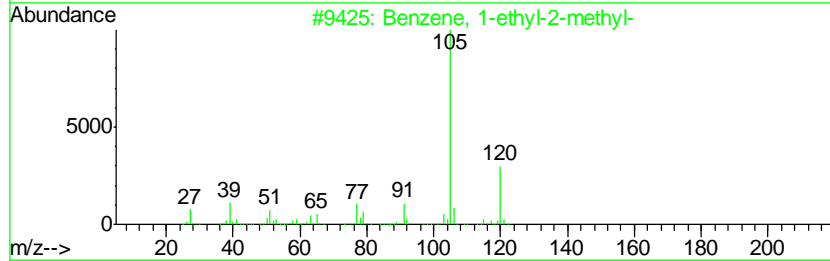
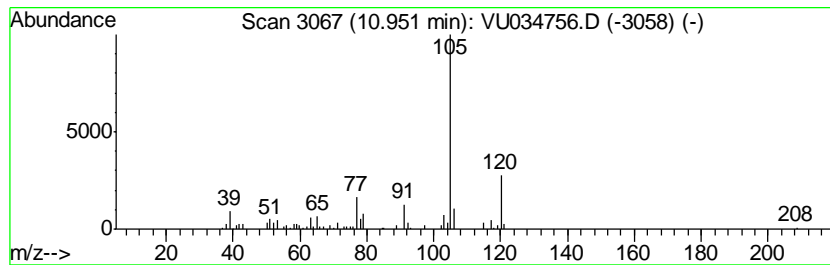
Quant Method : Z:\VOASRV\HPCHEM1\MSVOA_U\METHOD\SOMULM091919WMA.M
 Quant Title : VOC Analysis

TIC Library : C:\DATABASE\NIST11.L
 TIC Integration Parameters: LSCINT.P

 Peak Number 10 Benzene, 1-ethyl-2-methyl- Concentration Rank 19

R.T.	EstConc	Area	Relative to ISTD	R.T.
10.95	2.69 ug/L	85845	1,4-Dichlorobenzene-d4	11.46

Hit#	of	Tentative ID	MW	MolForm	CAS#	Qual
1	5	Benzene, 1-ethyl-2-methyl-	120	C9H12	000611-14-3	94
2		Benzene, 1,2,4-trimethyl-	120	C9H12	000095-63-6	91
3		Mesitylene	120	C9H12	000108-67-8	91
4		Benzene, 1-ethyl-4-methyl-	120	C9H12	000622-96-8	91
5		Benzene, 1-ethyl-4-methyl-	120	C9H12	000622-96-8	91



Data Path : Z:\VOASRV\HPCHEM1\MSVOA U\DATA\VU092319\
 Data File : VU034756.D
 Acq On : 24 Sep 2019 00:27
 Operator : JC/SP
 Sample : K4932-13
 Misc : 5.0mL/MSVOA U/WATER
 ALS Vial : 33 Sample Multiplier: 1

Instrument :
 MSVOA_U
 ClientSampled :
 BFDK1

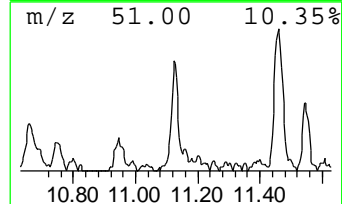
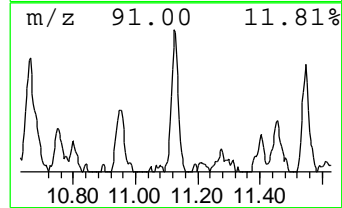
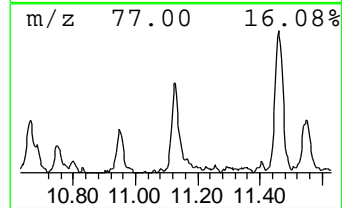
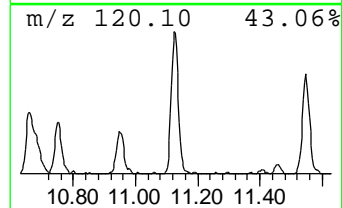
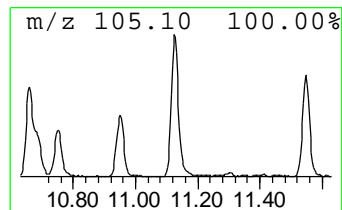
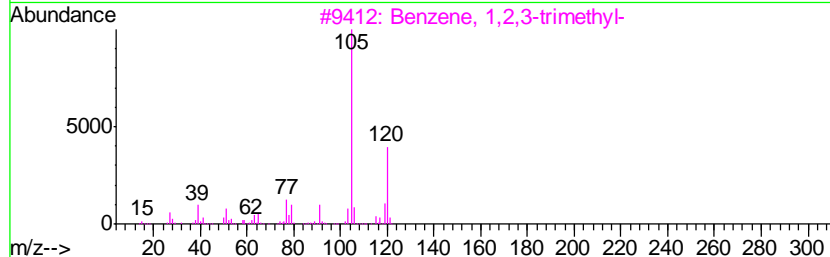
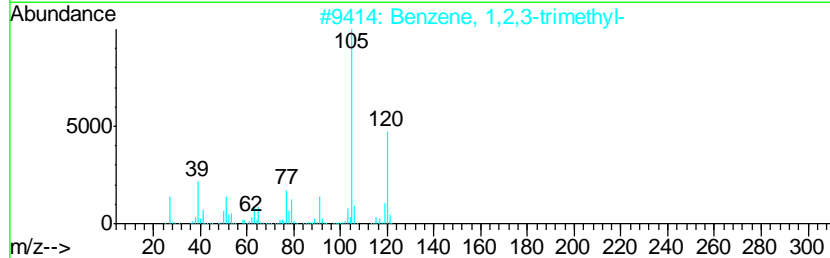
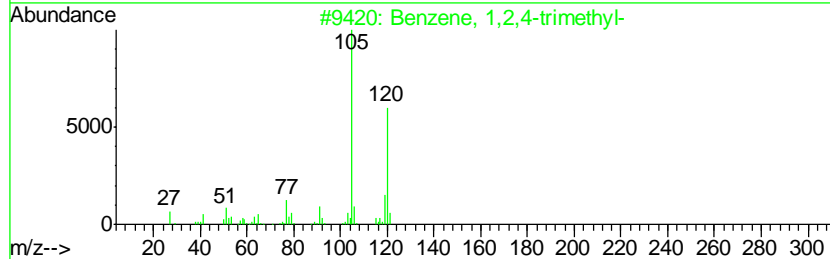
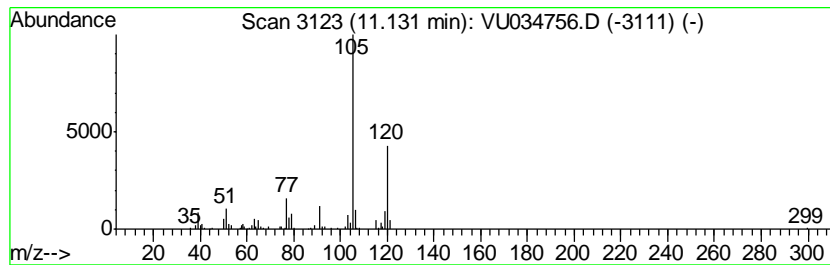
Quant Method : Z:\VOASRV\HPCHEM1\MSVOA_U\METHOD\SOMULM091919WMA.M
 Quant Title : VOC Analysis

TIC Library : C:\DATABASE\NIST11.L
 TIC Integration Parameters: LSCINT.P

 Peak Number 11 Benzene, 1,2,4-trimethyl- Concentration Rank 15

R.T.	EstConc	Area	Relative to ISTD	R.T.
11.13	4.65 ug/L	148107	1,4-Dichlorobenzene-d4	11.46

Hit#	of	Tentative ID	MW	MolForm	CAS#	Qual
1	5	Benzene, 1,2,4-trimethyl-	120	C9H12	000095-63-6	95
2		Benzene, 1,2,3-trimethyl-	120	C9H12	000526-73-8	94
3		Benzene, 1,2,3-trimethyl-	120	C9H12	000526-73-8	91
4		Mesitylene	120	C9H12	000108-67-8	91
5		Benzene, 1-ethyl-3-methyl-	120	C9H12	000620-14-4	91



Data Path : Z:\VOASRV\HPCHEM1\MSVOA U\DATA\VU092319\
 Data File : VU034756.D
 Acq On : 24 Sep 2019 00:27
 Operator : JC/SP
 Sample : K4932-13
 Misc : 5.0mL/MSVOA U/WATER
 ALS Vial : 33 Sample Multiplier: 1

Instrument :
 MSVOA_U
 ClientSampled :
 BFDK1

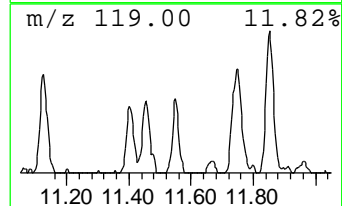
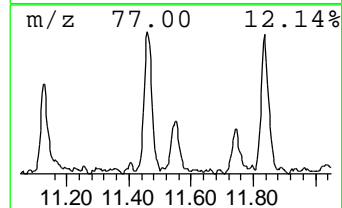
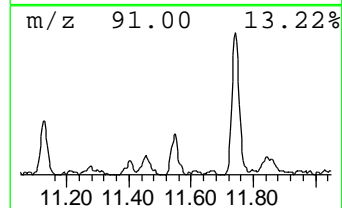
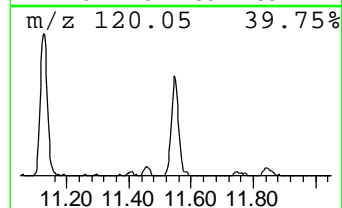
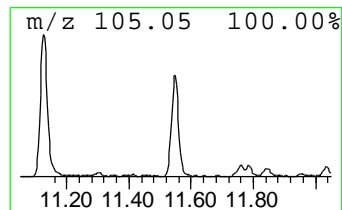
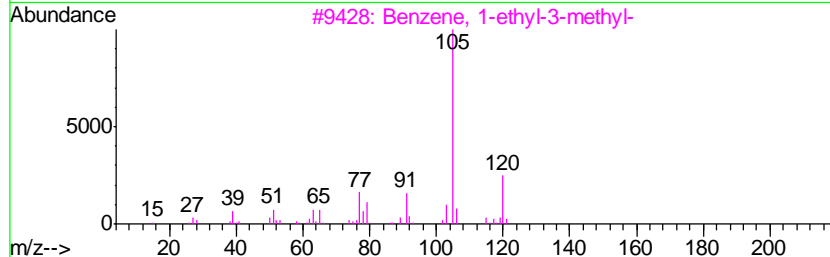
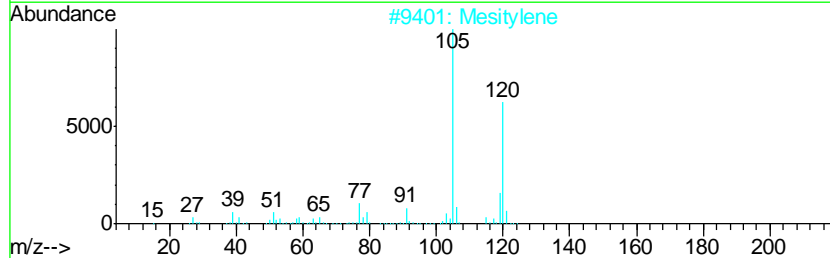
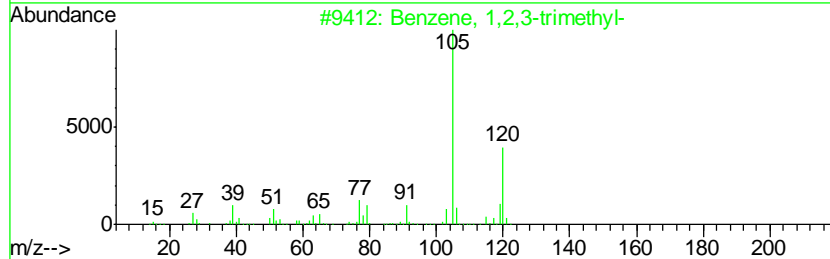
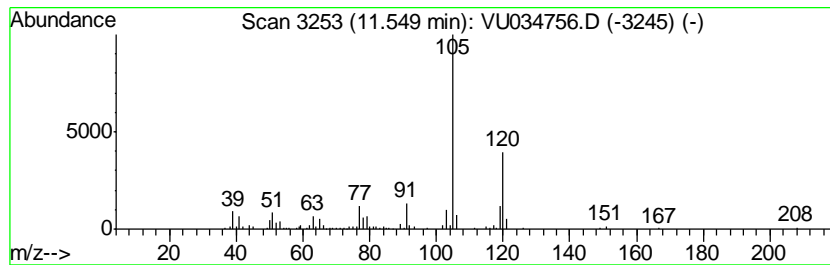
Quant Method : Z:\VOASRV\HPCHEM1\MSVOA_U\METHOD\SOMULM091919WMA.M
 Quant Title : VOC Analysis

TIC Library : C:\DATABASE\NIST11.L
 TIC Integration Parameters: LSCINT.P

 Peak Number 12 Benzene, 1,2,3-trimethyl- Concentration Rank 18

R.T.	EstConc	Area	Relative to ISTD	R.T.
11.55	2.92 ug/L	93134	1,4-Dichlorobenzene-d4	11.46

Hit#	of	Tentative ID	MW	MolForm	CAS#	Qual
1	5	Benzene, 1,2,3-trimethyl-	120	C9H12	000526-73-8	94
2		Mesitylene	120	C9H12	000108-67-8	94
3		Benzene, 1-ethyl-3-methyl-	120	C9H12	000620-14-4	90
4		Benzene, 1,2,3-trimethyl-	120	C9H12	000526-73-8	90
5		Mesitylene	120	C9H12	000108-67-8	90



Data Path : Z:\VOASRV\HPCHEM1\MSVOA U\DATA\VU092319\
 Data File : VU034756.D
 Acq On : 24 Sep 2019 00:27
 Operator : JC/SP
 Sample : K4932-13
 Misc : 5.0mL/MSVOA U/WATER
 ALS Vial : 33 Sample Multiplier: 1

Instrument :
 MSVOA_U
 ClientSampled :
 BFDK1

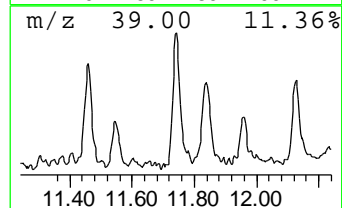
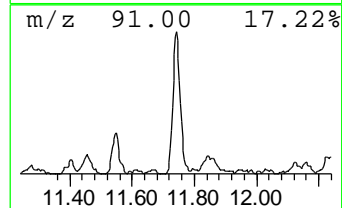
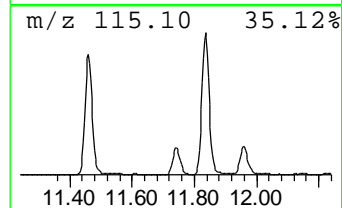
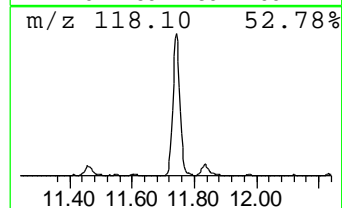
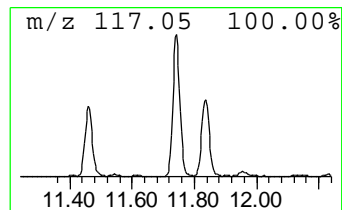
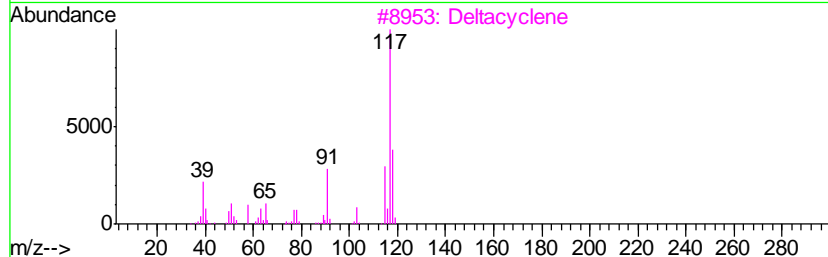
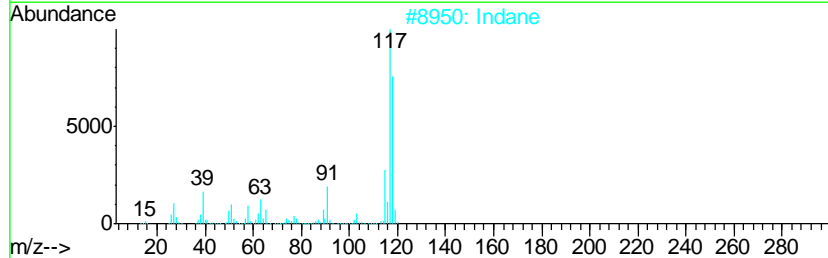
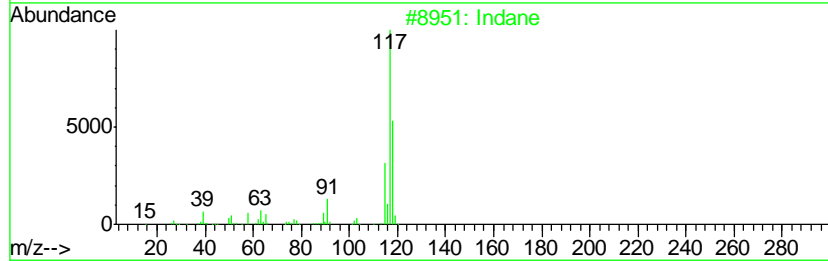
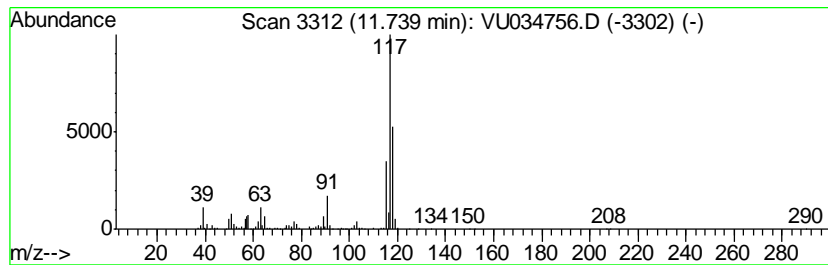
Quant Method : Z:\VOASRV\HPCHEM1\MSVOA_U\METHOD\SOMULM091919WMA.M
 Quant Title : VOC Analysis

TIC Library : C:\DATABASE\NIST11.L
 TIC Integration Parameters: LSCINT.P

 Peak Number 13 Indane Concentration Rank 9

R.T.	EstConc	Area	Relative to ISTD	R.T.
11.74	10.84 ug/L	345483	1,4-Dichlorobenzene-d4	11.46

Hit#	of	Tentative ID	MW	MolForm	CAS#	Qual
1	5	Indane	118	C9H10	000496-11-7	90
2		Indane	118	C9H10	000496-11-7	90
3		Deltacyclene	118	C9H10	007785-10-6	76
4		Indane	118	C9H10	000496-11-7	64
5		Benzene, cyclopropyl-	118	C9H10	000873-49-4	64



Data Path : Z:\VOASRV\HPCHEM1\MSVOA U\DATA\VU092319\
 Data File : VU034756.D
 Acq On : 24 Sep 2019 00:27
 Operator : JC/SP
 Sample : K4932-13
 Misc : 5.0mL/MSVOA U/WATER
 ALS Vial : 33 Sample Multiplier: 1

Instrument :
 MSVOA_U
 ClientSampled :
 BFDK1

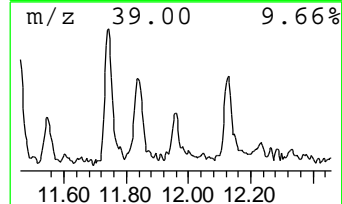
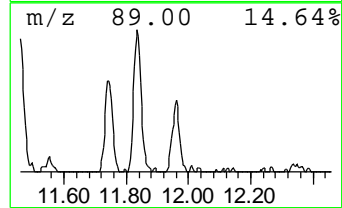
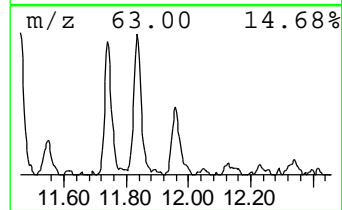
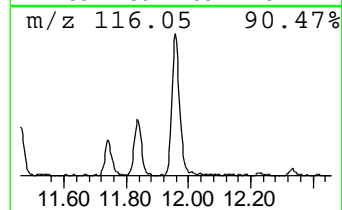
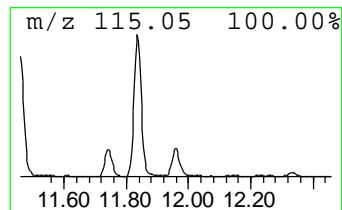
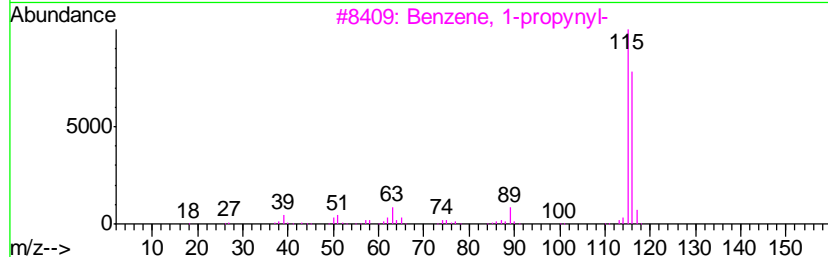
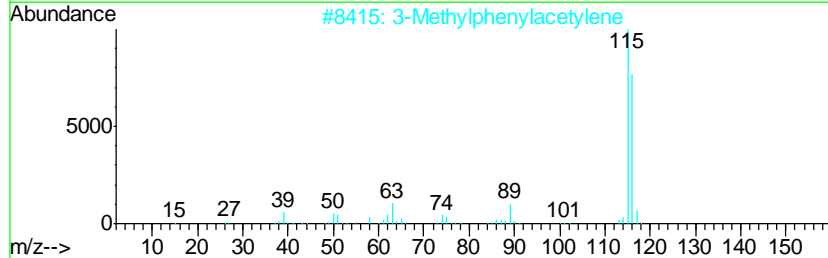
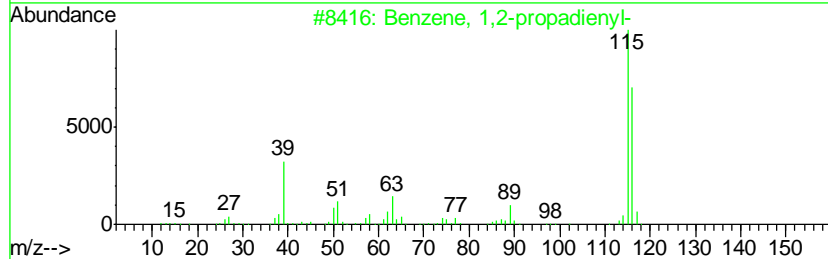
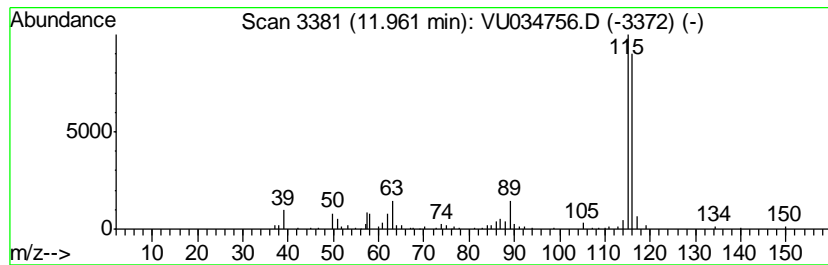
Quant Method : Z:\VOASRV\HPCHEM1\MSVOA_U\METHOD\SOMULM091919WMA.M
 Quant Title : VOC Analysis

TIC Library : C:\DATABASE\NIST11.L
 TIC Integration Parameters: LSCINT.P

 Peak Number 14 Benzene, 1,2-propadienyl- Concentration Rank 16

R.T.	EstConc	Area	Relative to ISTD	R.T.
11.96	3.56 ug/L	113496	1,4-Dichlorobenzene-d4	11.46

Hit#	of	Tentative ID	MW	MolForm	CAS#	Qual
1	5	Benzene, 1,2-propadienyl-	116	C9H8	002327-99-3	94
2		3-Methylphenylacetylene	116	C9H8	000766-82-5	91
3		Benzene, 1-propynyl-	116	C9H8	000673-32-5	91
4		Benzene, 1-propynyl-	116	C9H8	000673-32-5	91
5		Indene	116	C9H8	000095-13-6	90



Data Path : Z:\VOASRV\HPCHEM1\MSVOA U\DATA\VU092319\
 Data File : VU034756.D
 Acq On : 24 Sep 2019 00:27
 Operator : JC/SP
 Sample : K4932-13
 Misc : 5.0mL/MSVOA U/WATER
 ALS Vial : 33 Sample Multiplier: 1

Instrument :
 MSVOA_U
 ClientSampled :
 BFDK1

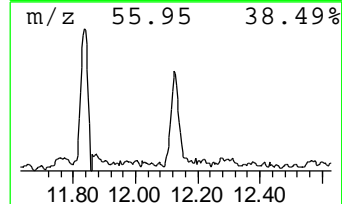
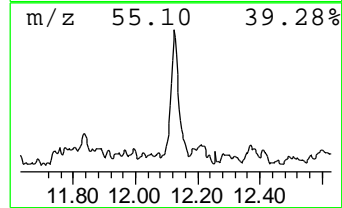
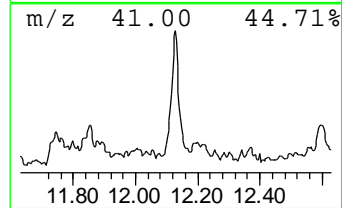
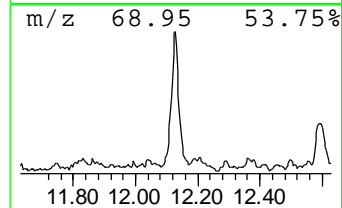
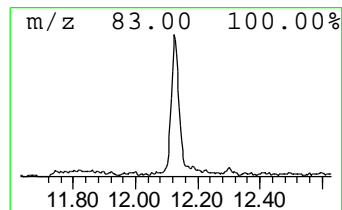
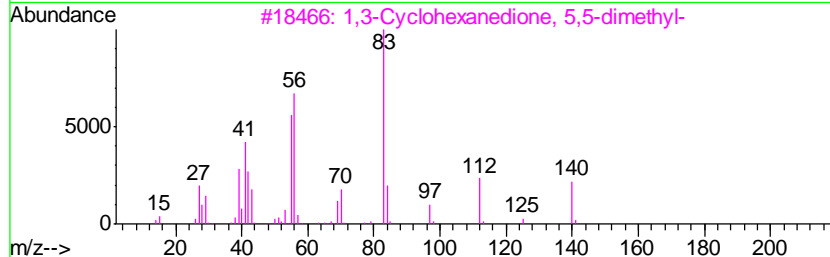
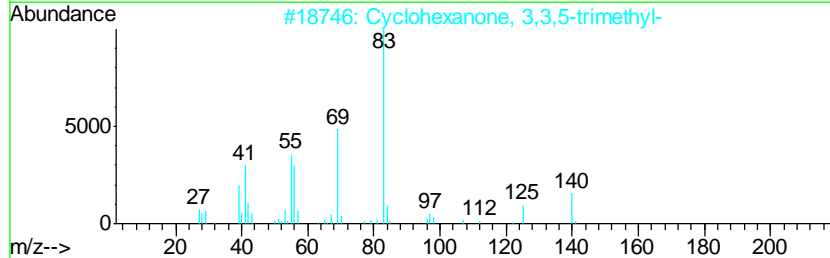
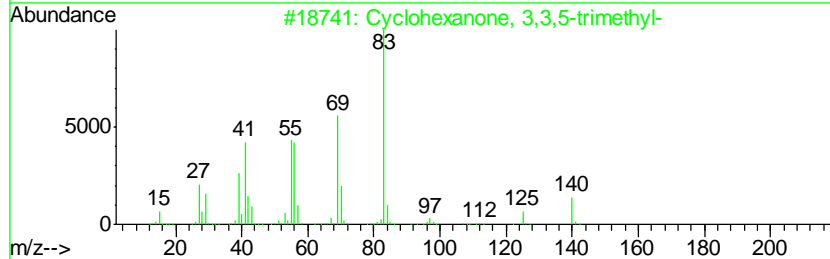
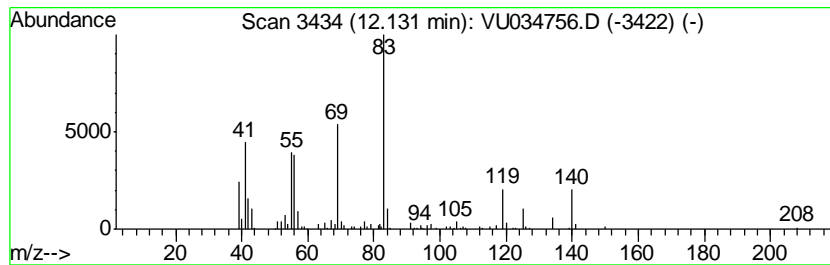
Quant Method : Z:\VOASRV\HPCHEM1\MSVOA_U\METHOD\SOMULM091919WMA.M
 Quant Title : VOC Analysis

TIC Library : C:\DATABASE\NIST11.L
 TIC Integration Parameters: LSCINT.P

 Peak Number 15 Cyclohexanone, 3,3,5-trimeth... Concentration Rank 14

R.T.	EstConc	Area	Relative to ISTD	R.T.
12.13	4.70 ug/L	149774	1,4-Dichlorobenzene-d4	11.46

Hit#	of	Tentative ID	MW	MolForm	CAS#	Qual
1	5	Cyclohexanone, 3,3,5-trimethyl-	140	C9H16O	000873-94-9	87
2		Cyclohexanone, 3,3,5-trimethyl-	140	C9H16O	000873-94-9	74
3		1,3-Cyclohexanedione, 5,5-dimethyl-	140	C8H12O2	000126-81-8	59
4		1H-1,2,4-Triazole, 3-methyl-	83	C3H5N3	007170-01-6	50
5		1,3-Cyclohexanedione, 5,5-dimethyl-	140	C8H12O2	000126-81-8	43



Data Path : Z:\VOASRV\HPCHEM1\MSVOA U\DATA\VU092319\
 Data File : VU034756.D
 Acq On : 24 Sep 2019 00:27
 Operator : JC/SP
 Sample : K4932-13
 Misc : 5.0mL/MSVOA U/WATER
 ALS Vial : 33 Sample Multiplier: 1

Instrument :
 MSVOA_U
 ClientSampled :
 BFDK1

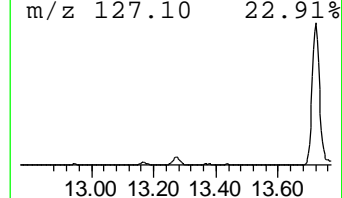
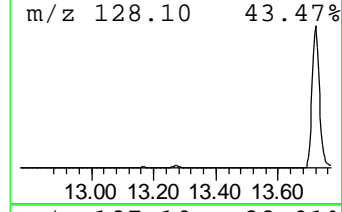
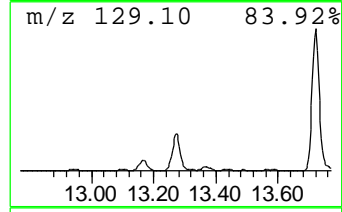
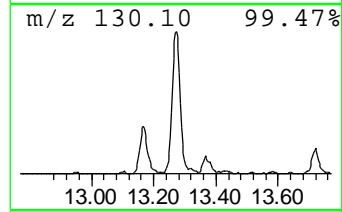
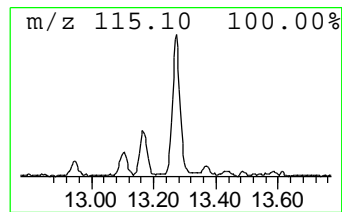
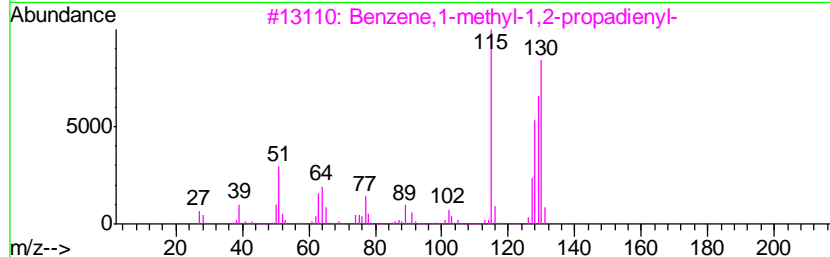
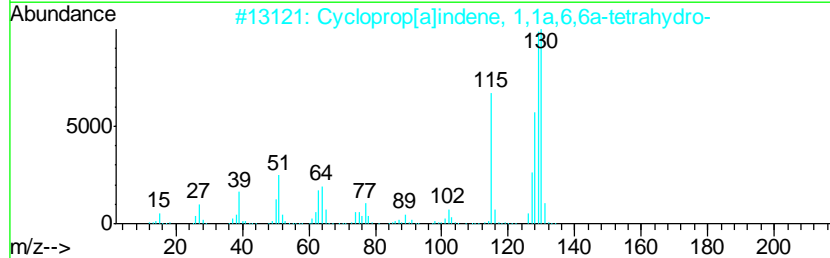
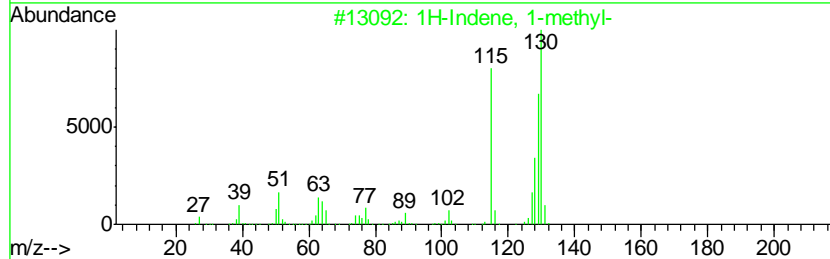
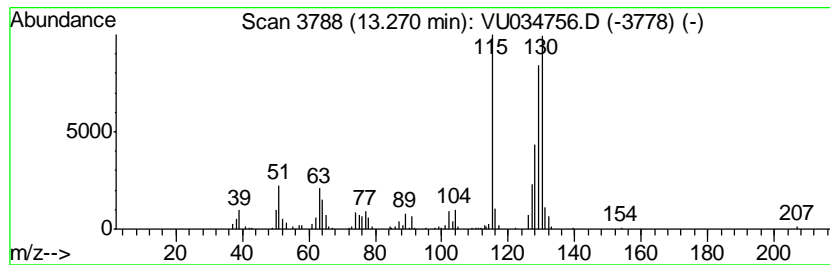
Quant Method : Z:\VOASRV\HPCHEM1\MSVOA_U\METHOD\SOMULM091919WMA.M
 Quant Title : VOC Analysis

TIC Library : C:\DATABASE\NIST11.L
 TIC Integration Parameters: LSCINT.P

 Peak Number 16 1H-Indene, 1-methyl- Concentration Rank 13

R.T.	EstConc	Area	Relative to ISTD	R.T.
13.27	5.60 ug/L	178584	1,4-Dichlorobenzene-d4	11.46

Hit#	of	Tentative ID	MW	MolForm	CAS#	Qual
1	5	1H-Indene, 1-methyl-	130	C10H10	000767-59-9	96
2		Cycloprop[a]indene, 1,1a,6,6a-te...	130	C10H10	015677-15-3	93
3		Benzene,1-methyl-1,2-propadienyl-	130	C10H10	022433-39-2	93
4		Benzene, 1-butynyl-	130	C10H10	000622-76-4	93
5		Benzene, (1-methyl-2-cyclopropen...	130	C10H10	065051-83-4	91



Data Path : Z:\VOASRV\HPCHEM1\MSVOA U\DATA\VU092319\
 Data File : VU034756.D
 Acq On : 24 Sep 2019 00:27
 Operator : JC/SP
 Sample : K4932-13
 Misc : 5.0mL/MSVOA U/WATER
 ALS Vial : 33 Sample Multiplier: 1

Instrument :
 MSVOA_U
 ClientSampled :
 BFDK1

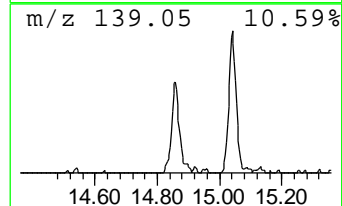
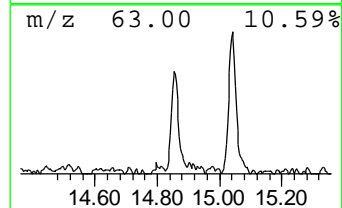
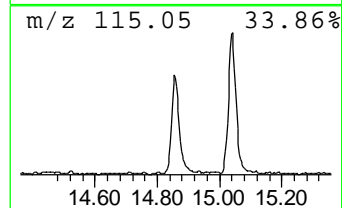
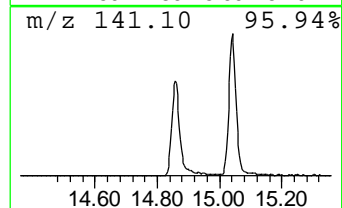
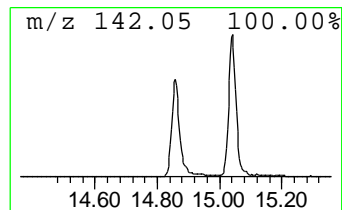
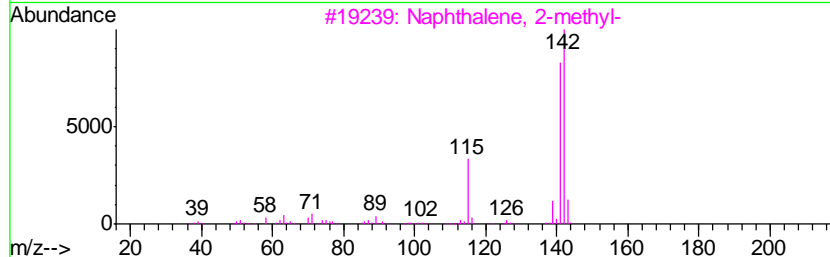
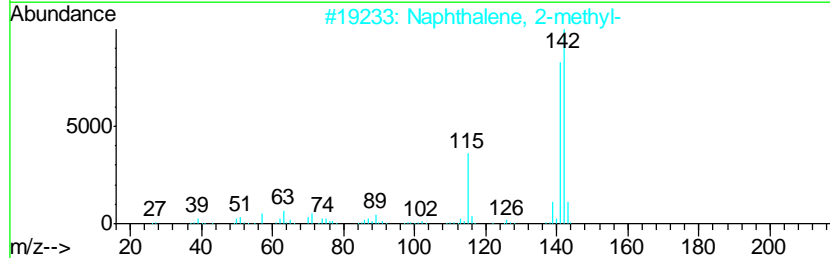
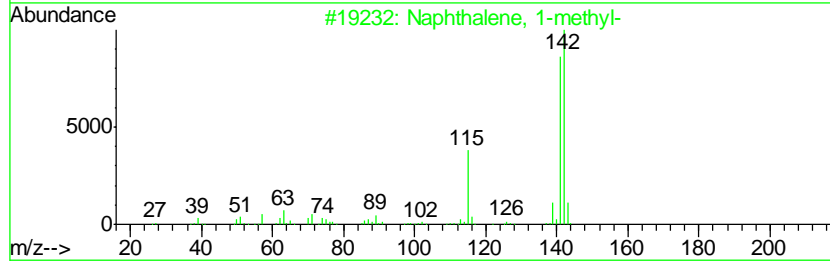
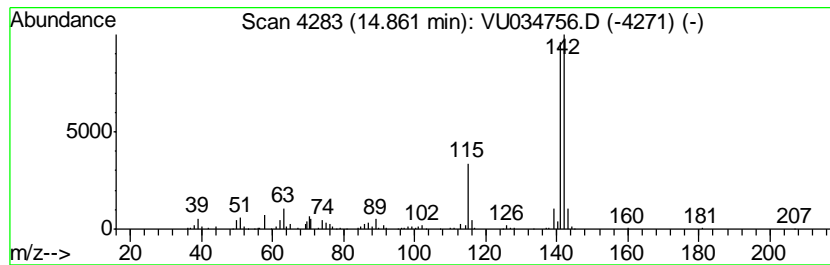
Quant Method : Z:\VOASRV\HPCHEM1\MSVOA_U\METHOD\SOMULM091919WMA.M
 Quant Title : VOC Analysis

TIC Library : C:\DATABASE\NIST11.L
 TIC Integration Parameters: LSCINT.P

 Peak Number 18 Naphthalene, 1-methyl- Concentration Rank 10

R.T.	EstConc	Area	Relative to ISTD	R.T.
14.86	8.24 ug/L	262624	1,4-Dichlorobenzene-d4	11.46

Hit#	of	Tentative ID	MW	MolForm	CAS#	Qual
1	5	Naphthalene, 1-methyl-	142	C11H10	000090-12-0	96
2		Naphthalene, 2-methyl-	142	C11H10	000091-57-6	96
3		Naphthalene, 2-methyl-	142	C11H10	000091-57-6	94
4		Naphthalene, 2-methyl-	142	C11H10	000091-57-6	94
5		Benzocycloheptatriene	142	C11H10	000264-09-5	93



Data Path : Z:\VOASRV\HPCHEM1\MSVOA_U\DATA\VU092319\
 Data File : VU034756.D
 Acq On : 24 Sep 2019 00:27
 Operator : JC/SP
 Sample : K4932-13
 Misc : 5.0mL/MSVOA_U/WATER
 ALS Vial : 33 Sample Multiplier: 1

Instrument :
 MSVOA_U
 ClientSampleId :
 BFDK1

Quant Method : Z:\VOASRV\HPCHEM1\MSVOA_U\METHOD\SOMULM091919WMA.M
 Quant Title : VOC Analysis

TIC Library : C:\DATABASE\NIST11.L
 TIC Integration Parameters: LSCINT.P

TIC Top Hit name	RT	EstConc	Units	Response	--Internal Standard--			
					#	RT	Resp	Conc
Isopropyl acetate	5.53	7.8	ug/L	212906	1	5.86	1360800	50.0
n-Propyl acetate	6.68	116.5	ug/L	3169760	1	5.86	1360800	50.0
Propanoic acid, 1...	7.40	15.3	ug/L	416366	1	5.86	1360800	50.0
Propanoic acid, 2...	8.13	21.1	ug/L	738079	2	9.07	1751640	50.0
Propanoic acid, p...	8.40	31.3	ug/L	1096480	2	9.07	1751640	50.0
Butanoic acid, 1-...	8.88	38.4	ug/L	1346530	2	9.07	1751640	50.0
Benzene, 1-ethyl-...	10.66	3.5	ug/L	112546	3	11.46	1594210	50.0
Benzene, 1-ethyl-...	10.95	2.7	ug/L	85845	3	11.46	1594210	50.0
Benzene, 1,2,4-tr...	11.13	4.7	ug/L	148107	3	11.46	1594210	50.0
Benzene, 1,2,3-tr...	11.55	2.9	ug/L	93134	3	11.46	1594210	50.0
Indane	11.74	10.8	ug/L	345483	3	11.46	1594210	50.0
Benzene, 1,2-prop...	11.96	3.6	ug/L	113496	3	11.46	1594210	50.0
Cyclohexanone, 3,...	12.13	4.7	ug/L	149774	3	11.46	1594210	50.0
1H-Indene, 1-methyl-	13.27	5.6	ug/L	178584	3	11.46	1594210	50.0
Naphthalene, 1-me...	14.86	8.2	ug/L	262624	3	11.46	1594210	50.0